

Data Path : Z:\pestpcbsrv\HPCHEM1\ECD\_0\Data\P0012622\  
 Data File : P0084437.D  
 Signal(s) : Signal #1: ECD1A.CH Signal #2: ECD2B.CH  
 Acq On : 26 Jan 2022 19:46  
 Operator : AJ\MA  
 Sample : AR1262ICC500  
 Misc :  
 ALS Vial : 25 Sample Multiplier: 1

Instrument :  
 ECD\_0  
 ClientSampleId :  
 AR1262ICC500

Integration File signal 1: autoint1.e  
 Integration File signal 2: autoint2.e  
 Quant Time: Jan 28 07:46:40 2022  
 Quant Method : Z:\pestpcbsrv\HPCHEM1\ECD\_0\methods\P0012622.M  
 Quant Title : GC EXTRACTABLES  
 QLast Update : Fri Jan 28 07:46:04 2022  
 Response via : Initial Calibration  
 Integrator: ChemStation 6890 Scale Mode: Small noise peaks clipped

Volume Inj. : 2 µl  
 Signal #1 Phase : ZB-MR1 Signal #2 Phase: ZB-MR2  
 Signal #1 Info : 30Mx0.32mmx 0.50µ Signal #2 Info : 30M x 0.32mm x 0.25µm

Compound	RT#1	RT#2	Resp#1	Resp#2	ng/ml	ng/ml
-----						
System Monitoring Compounds						
1) SA Tetrachlo...	6.519	5.302	2522527	849491	50.000	50.000
2) SA Decachlor...	13.743	11.299	3806638	1311732	50.000	50.000
Target Compounds						
36) L8 AR-1262-1	10.479	9.089	2193454	869170	500.000	500.000
37) L8 AR-1262-2	11.194	9.617	3844564	1628471	500.000	500.000
38) L8 AR-1262-3	11.621	9.930	2835936	696438	500.000	500.000
39) L8 AR-1262-4	11.738	10.003	1523140	1243624	513.135m	500.000
40) L8 AR-1262-5	12.656	10.596	1567700	613887	500.000	500.000
-----						

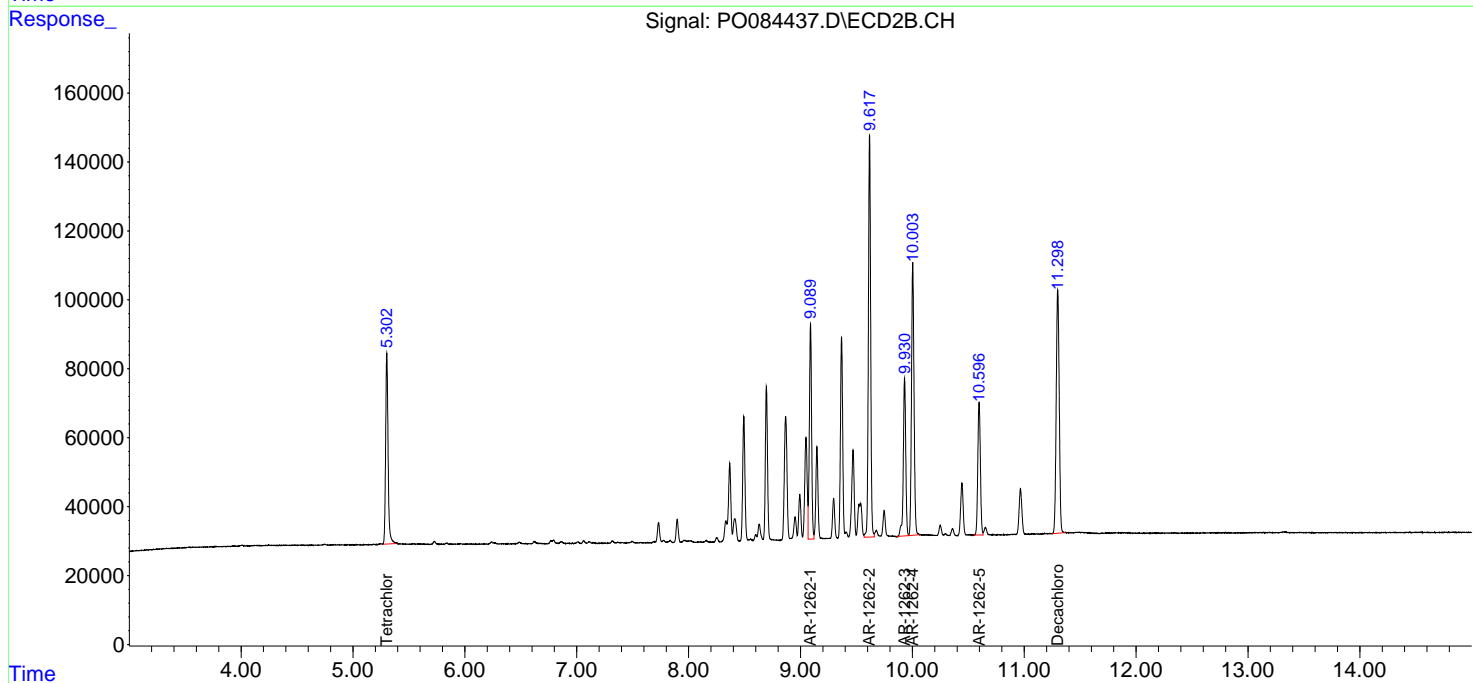
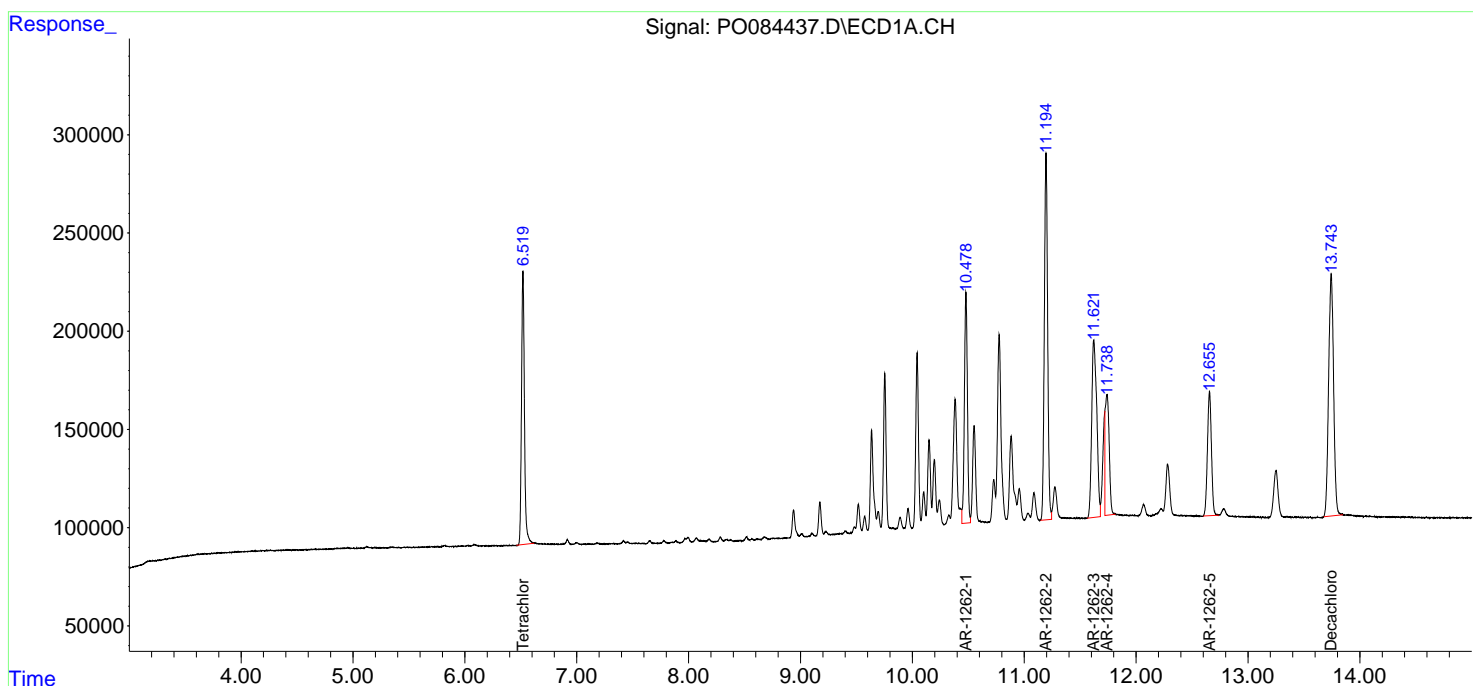
(f)=RT Delta > 1/2 Window (#)=Amounts differ by > 25% (m)=manual int.

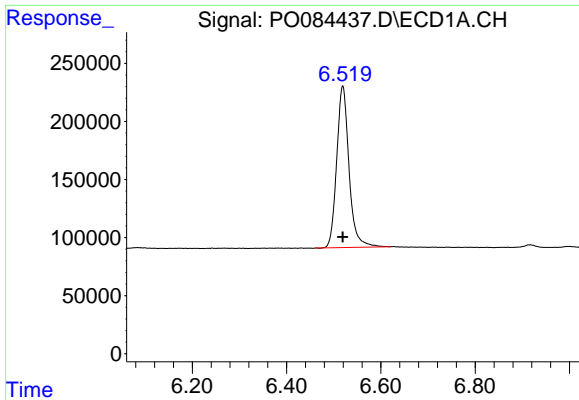
Data Path : Z:\pestpcbsrv\HPCHEM1\ECD\_0\Data\P0012622\  
 Data File : P0084437.D  
 Signal(s) : Signal #1: ECD1A.CH Signal #2: ECD2B.CH  
 Acq On : 26 Jan 2022 19:46  
 Operator : AJ\MA  
 Sample : AR1262ICC500  
 Misc :  
 ALS Vial : 25 Sample Multiplier: 1

Instrument :  
 ECD\_0  
 ClientSampleId :  
 AR1262ICC500

Integration File signal 1: autoint1.e  
 Integration File signal 2: autoint2.e  
 Quant Time: Jan 28 07:46:40 2022  
 Quant Method : Z:\pestpcbsrv\HPCHEM1\ECD\_0\methods\P0012622.M  
 Quant Title : GC EXTRACTABLES  
 QLast Update : Fri Jan 28 07:46:04 2022  
 Response via : Initial Calibration  
 Integrator: ChemStation 6890 Scale Mode: Small noise peaks clipped

Volume Inj. : 2 µl  
 Signal #1 Phase : ZB-MR1 Signal #2 Phase: ZB-MR2  
 Signal #1 Info : 30Mx0.32mmx 0.50µm Signal #2 Info : 30M x 0.32mm x 0.25µm

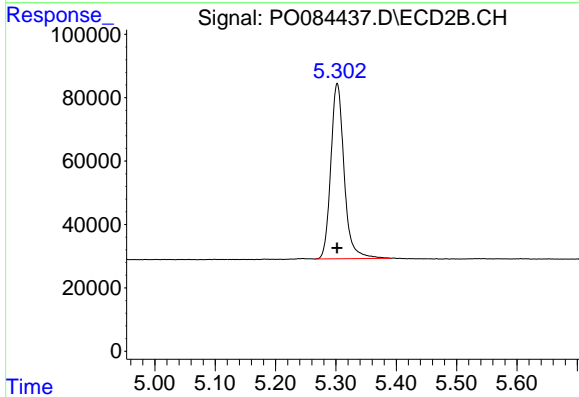




#1 Tetrachloro-m-xylene

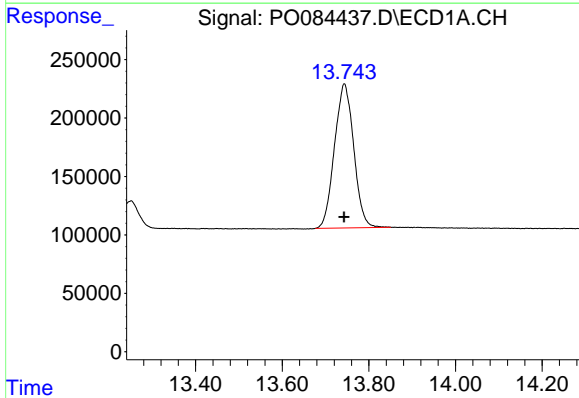
R.T.: 6.519 min  
 Delta R.T.: 0.000 min  
 Response: 2522527  
 Conc: 50.00 ng/ml

Instrument :  
 ECD\_O  
 ClientSampleId :  
 AR1262ICC500



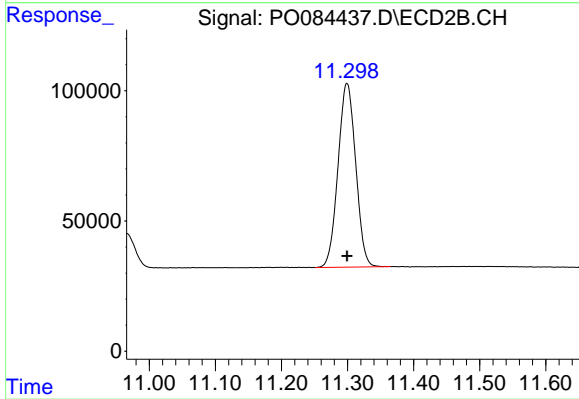
#1 Tetrachloro-m-xylene

R.T.: 5.302 min  
 Delta R.T.: 0.000 min  
 Response: 849491  
 Conc: 50.00 ng/ml



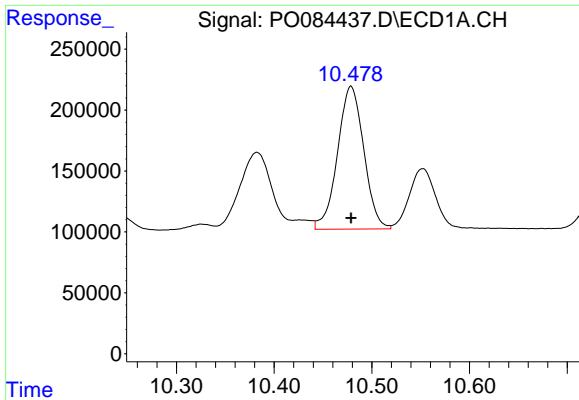
#2 Decachlorobiphenyl

R.T.: 13.743 min  
 Delta R.T.: 0.000 min  
 Response: 3806638  
 Conc: 50.00 ng/ml



#2 Decachlorobiphenyl

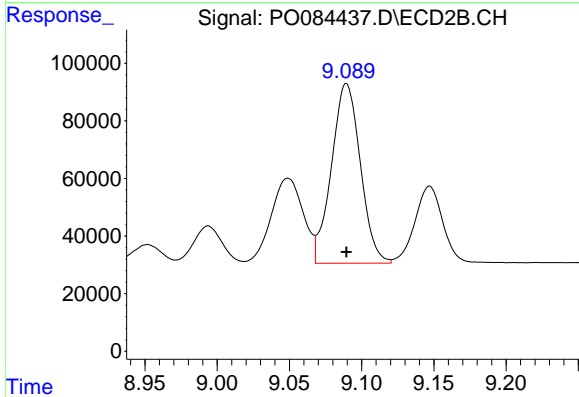
R.T.: 11.299 min  
 Delta R.T.: 0.000 min  
 Response: 1311732  
 Conc: 50.00 ng/ml



#36 AR-1262-1

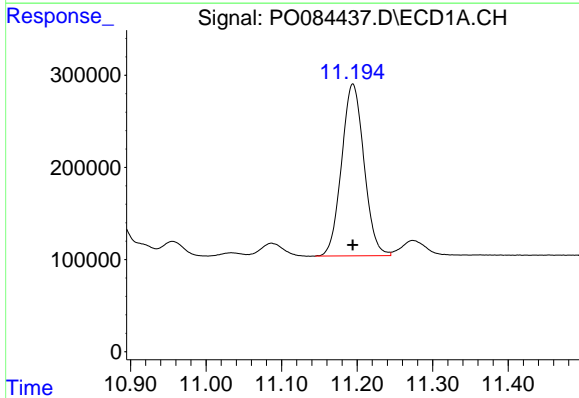
R.T.: 10.479 min  
 Delta R.T.: 0.000 min  
 Response: 2193454  
 Conc: 500.00 ng/ml

Instrument :  
 ECD\_O  
 ClientSampleId :  
 AR1262ICC500



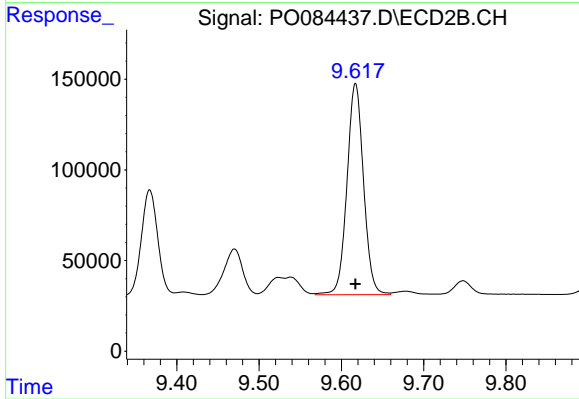
#36 AR-1262-1

R.T.: 9.089 min  
 Delta R.T.: 0.000 min  
 Response: 869170  
 Conc: 500.00 ng/ml



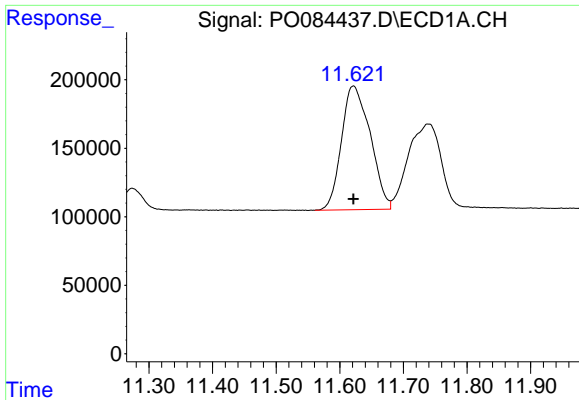
#37 AR-1262-2

R.T.: 11.194 min  
 Delta R.T.: 0.000 min  
 Response: 3844564  
 Conc: 500.00 ng/ml



#37 AR-1262-2

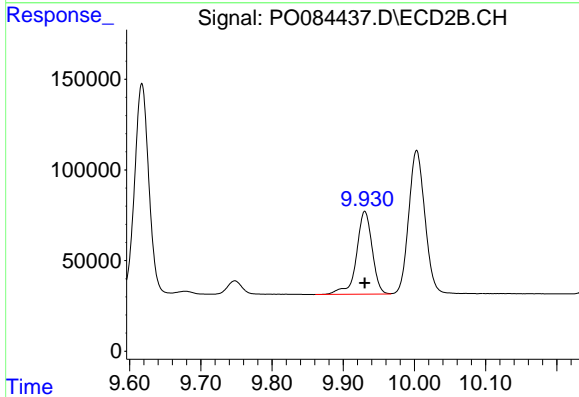
R.T.: 9.617 min  
 Delta R.T.: 0.000 min  
 Response: 1628471  
 Conc: 500.00 ng/ml



#38 AR-1262-3

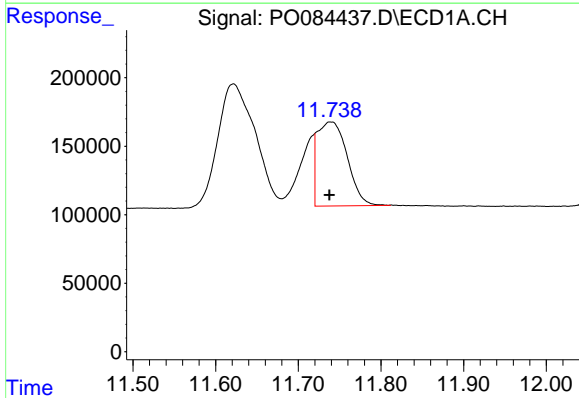
R.T.: 11.621 min  
Delta R.T.: 0.000 min  
Response: 2835936  
Conc: 500.00 ng/ml

Instrument :  
ECD\_O  
ClientSampleId :  
AR1262ICC500



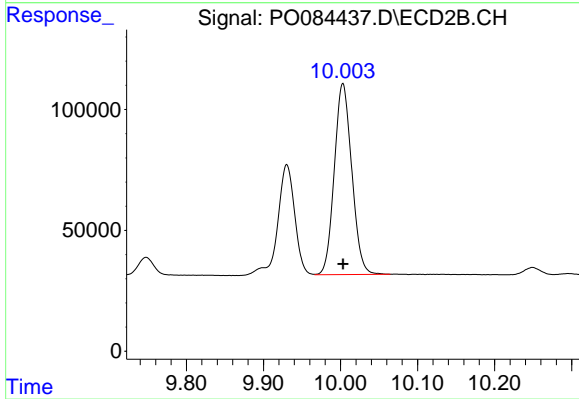
#38 AR-1262-3

R.T.: 9.930 min  
Delta R.T.: 0.000 min  
Response: 696438  
Conc: 500.00 ng/ml



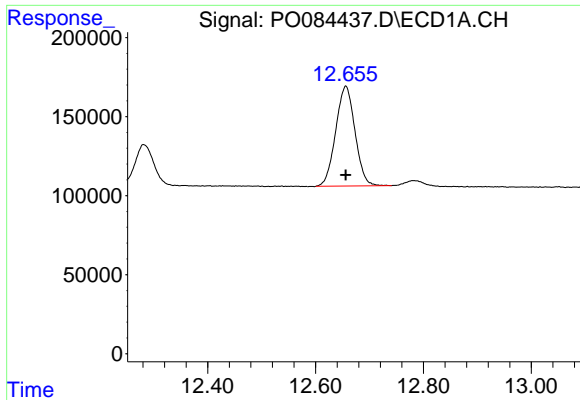
#39 AR-1262-4

R.T.: 11.738 min  
Delta R.T.: 0.000 min  
Response: 1523140  
Conc: 513.14 ng/ml m



#39 AR-1262-4

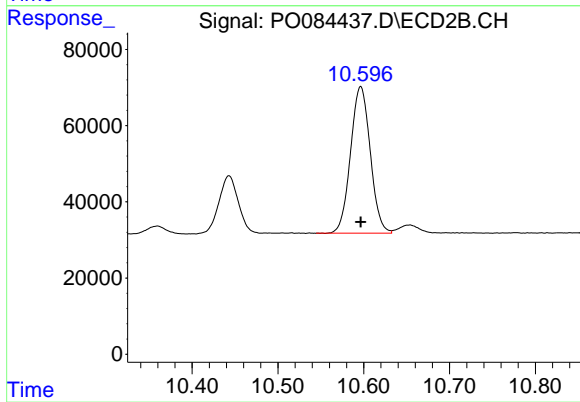
R.T.: 10.003 min  
Delta R.T.: 0.000 min  
Response: 1243624  
Conc: 500.00 ng/ml



#40 AR-1262-5

R.T.: 12.656 min  
Delta R.T.: 0.000 min  
Response: 1567700  
Conc: 500.00 ng/ml

Instrument :  
ECD\_O  
ClientSampleId :  
AR1262ICC500



#40 AR-1262-5

R.T.: 10.596 min  
Delta R.T.: 0.000 min  
Response: 613887  
Conc: 500.00 ng/ml