

Data Path : Z:\pestpcbsrv\HPCHEM1\ECD_0\Data\P0012622\
 Data File : P0084439.D
 Signal(s) : Signal #1: ECD1A.CH Signal #2: ECD2B.CH
 Acq On : 26 Jan 2022 20:24
 Operator : AJ\MA
 Sample : AR1268ICC750
 Misc :
 ALS Vial : 27 Sample Multiplier: 1

Instrument :
 ECD_0
 ClientSampleId :
 AR1268ICC750

Integration File signal 1: autoint1.e
 Integration File signal 2: autoint2.e
 Quant Time: Jan 27 08:49:10 2022
 Quant Method : Z:\pestpcbsrv\HPCHEM1\ECD_0\methods\P0012622.M
 Quant Title : GC EXTRACTABLES
 QLast Update : Thu Jan 27 08:48:56 2022
 Response via : Initial Calibration
 Integrator: ChemStation 6890 Scale Mode: Small noise peaks clipped

Volume Inj. : 2 µl
 Signal #1 Phase : ZB-MR1 Signal #2 Phase: ZB-MR2
 Signal #1 Info : 30Mx0.32mmx 0.50µ Signal #2 Info : 30M x 0.32mm x 0.25µm

Compound	RT#1	RT#2	Resp#1	Resp#2	ng/ml	ng/ml

System Monitoring Compounds						
1) SA Tetrachlo...	6.518	5.301	4006129	1400541	73.672	73.537
2) SA Decachlor...	13.741	11.297	9585335	3529007	74.290	74.505
Target Compounds						
41) L9 AR-1268-1	11.618	9.930	7385933	2997117	740.682	742.694
42) L9 AR-1268-2	11.744	10.002	6829061	2789400	741.809	742.766
43) L9 AR-1268-3	12.066	10.248	5970779	2343881	743.508	742.517
44) L9 AR-1268-4	12.654	10.594	2641641	1047759	744.140	742.909
45) L9 AR-1268-5	13.248	10.965	19671747	7941848	745.113	745.206

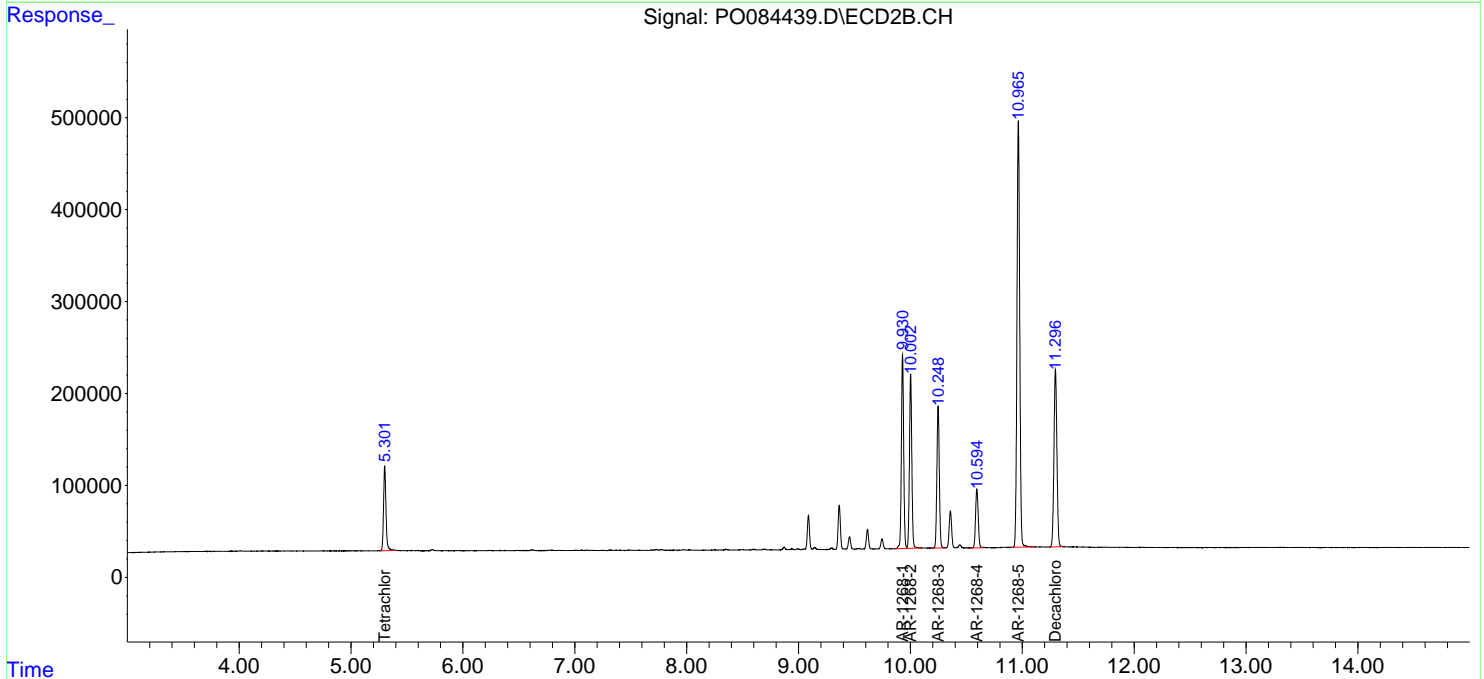
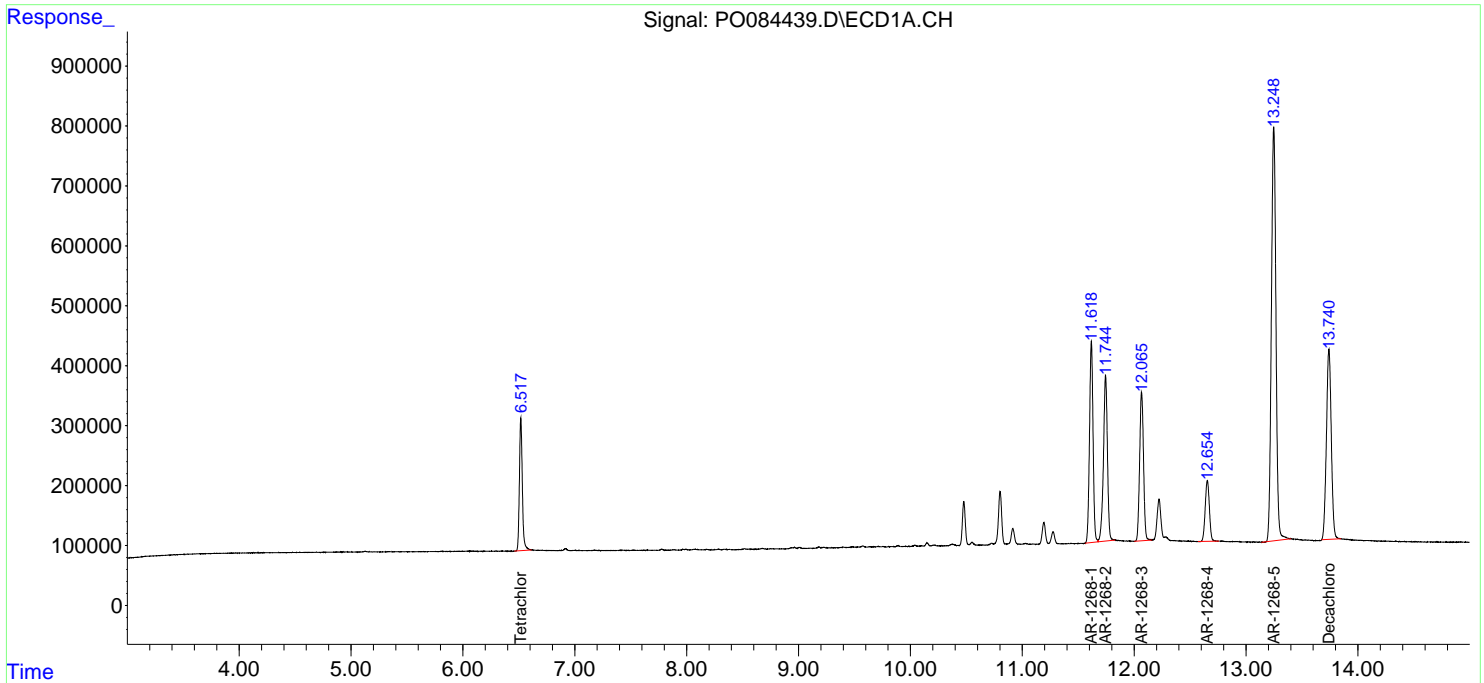
(f)=RT Delta > 1/2 Window (#)=Amounts differ by > 25% (m)=manual int.

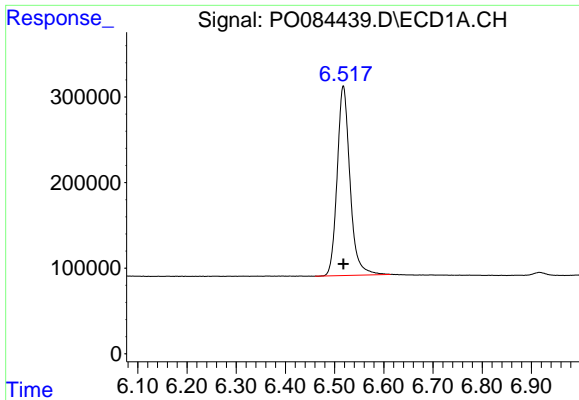
Data Path : Z:\pestpcbsrv\HPCHEM1\ECD_O\Data\P0012622\
 Data File : P0084439.D
 Signal(s) : Signal #1: ECD1A.CH Signal #2: ECD2B.CH
 Acq On : 26 Jan 2022 20:24
 Operator : AJ\MA
 Sample : AR1268ICC750
 Misc :
 ALS Vial : 27 Sample Multiplier: 1

Instrument :
 ECD_O
 ClientSampleId :
 AR1268ICC750

Integration File signal 1: autoint1.e
 Integration File signal 2: autoint2.e
 Quant Time: Jan 27 08:49:10 2022
 Quant Method : Z:\pestpcbsrv\HPCHEM1\ECD_O\methods\P0012622.M
 Quant Title : GC EXTRACTABLES
 QLast Update : Thu Jan 27 08:48:56 2022
 Response via : Initial Calibration
 Integrator: ChemStation 6890 Scale Mode: Small noise peaks clipped

Volume Inj. : 2 µl
 Signal #1 Phase : ZB-MR1 Signal #2 Phase: ZB-MR2
 Signal #1 Info : 30Mx0.32mmx 0.50µ Signal #2 Info : 30M x 0.32mm x 0.25µm

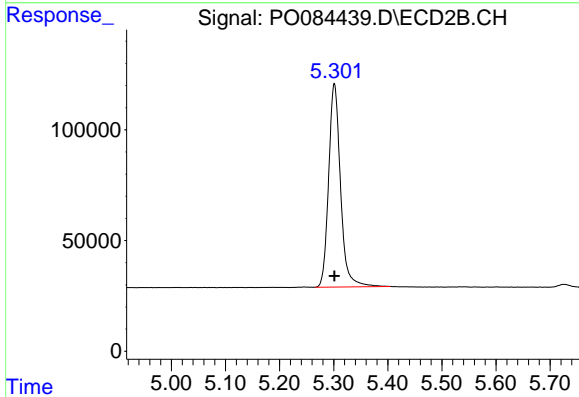




#1 Tetrachloro-m-xylene

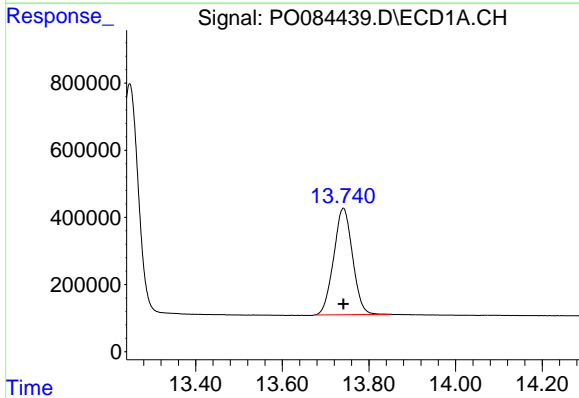
R.T.: 6.518 min
 Delta R.T.: 0.000 min
 Response: 4006129
 Conc: 73.67 ng/ml

Instrument :
 ECD_O
 ClientSampleId :
 AR1268ICC750



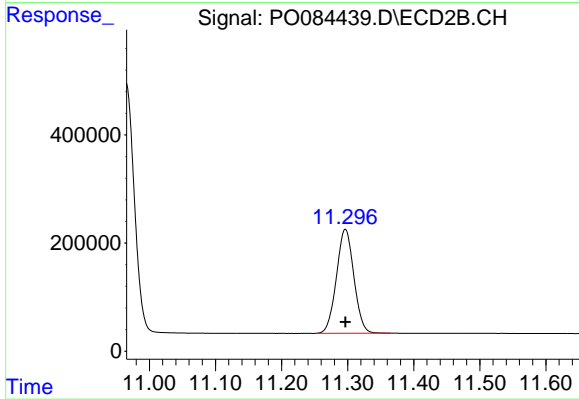
#1 Tetrachloro-m-xylene

R.T.: 5.301 min
 Delta R.T.: 0.000 min
 Response: 1400541
 Conc: 73.54 ng/ml



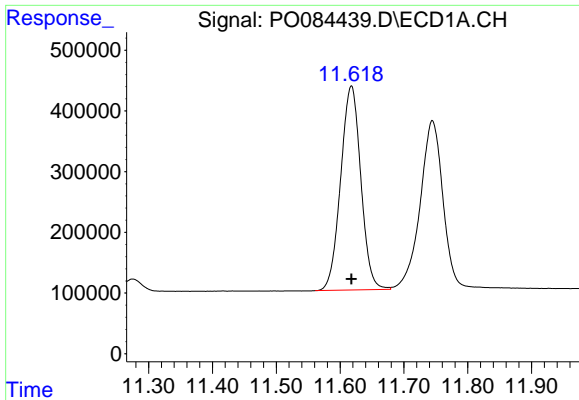
#2 Decachlorobiphenyl

R.T.: 13.741 min
 Delta R.T.: 0.000 min
 Response: 9585335
 Conc: 74.29 ng/ml



#2 Decachlorobiphenyl

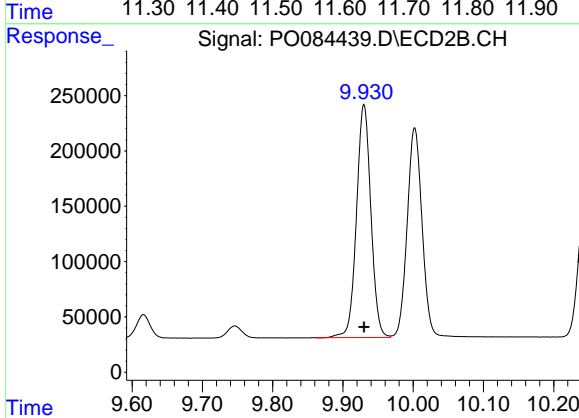
R.T.: 11.297 min
 Delta R.T.: 0.000 min
 Response: 3529007
 Conc: 74.50 ng/ml



#41 AR-1268-1

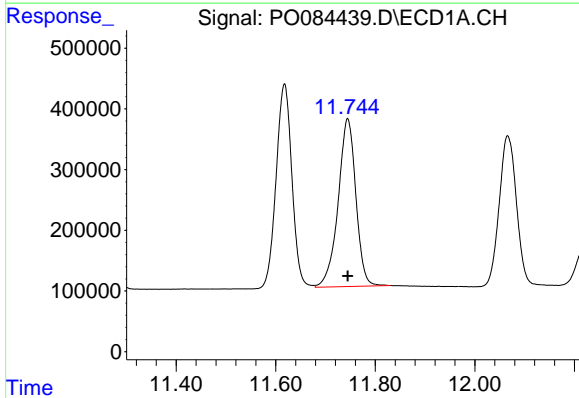
R.T.: 11.618 min
 Delta R.T.: 0.000 min
 Response: 7385933
 Conc: 740.68 ng/ml

Instrument :
 ECD_O
 ClientSampleId :
 AR1268ICC750



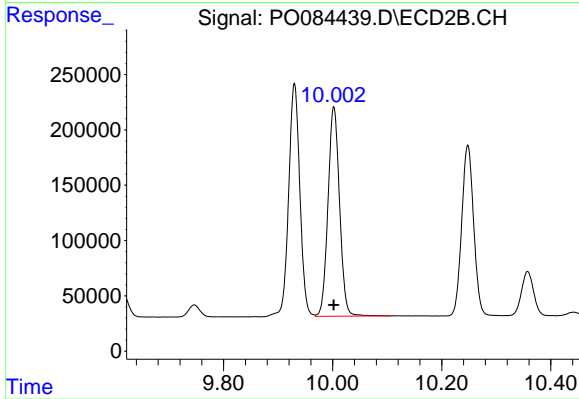
#41 AR-1268-1

R.T.: 9.930 min
 Delta R.T.: 0.000 min
 Response: 2997117
 Conc: 742.69 ng/ml



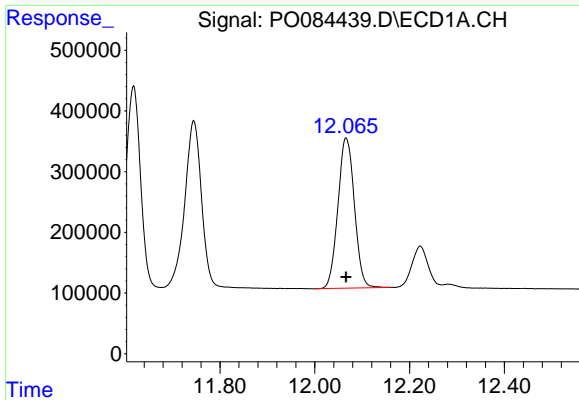
#42 AR-1268-2

R.T.: 11.744 min
 Delta R.T.: 0.000 min
 Response: 6829061
 Conc: 741.81 ng/ml



#42 AR-1268-2

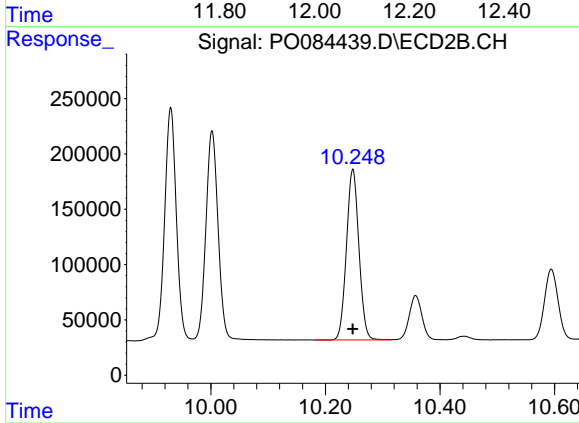
R.T.: 10.002 min
 Delta R.T.: 0.000 min
 Response: 2789400
 Conc: 742.77 ng/ml



#43 AR-1268-3

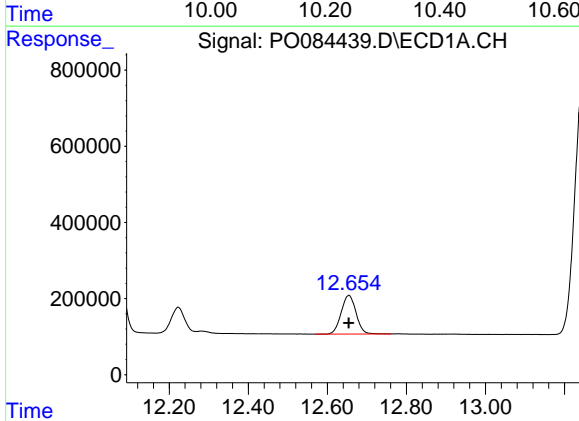
R.T.: 12.066 min
 Delta R.T.: 0.000 min
 Response: 5970779
 Conc: 743.51 ng/ml

Instrument :
 ECD_O
 ClientSampleId :
 AR1268ICC750



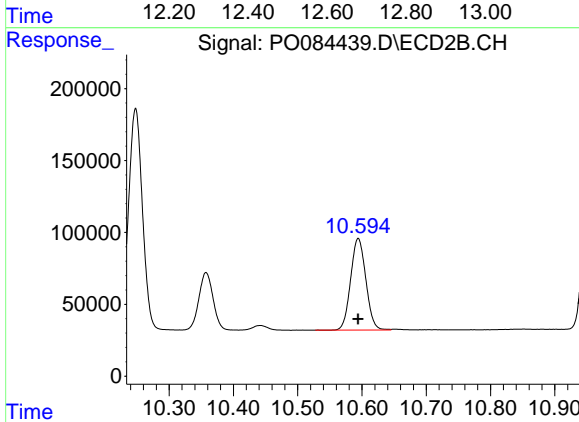
#43 AR-1268-3

R.T.: 10.248 min
 Delta R.T.: 0.000 min
 Response: 2343881
 Conc: 742.52 ng/ml



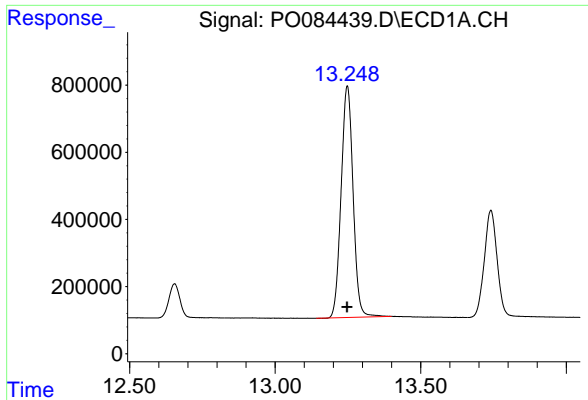
#44 AR-1268-4

R.T.: 12.654 min
 Delta R.T.: 0.000 min
 Response: 2641641
 Conc: 744.14 ng/ml



#44 AR-1268-4

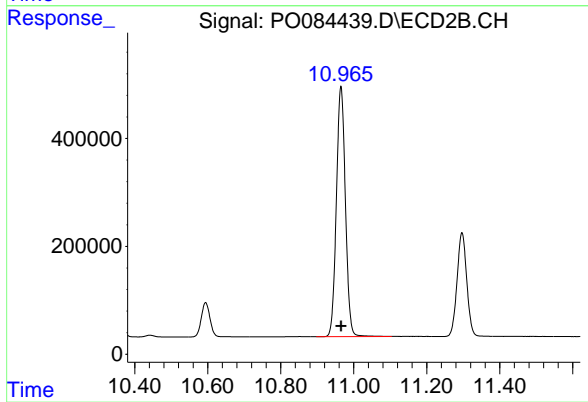
R.T.: 10.594 min
 Delta R.T.: 0.000 min
 Response: 1047759
 Conc: 742.91 ng/ml



#45 AR-1268-5

R.T.: 13.248 min
Delta R.T.: 0.000 min
Response: 19671747
Conc: 745.11 ng/ml

Instrument :
ECD_O
ClientSampleId :
AR1268ICC750



#45 AR-1268-5

R.T.: 10.965 min
Delta R.T.: 0.000 min
Response: 7941848
Conc: 745.21 ng/ml