

Data Path : Z:\pestpcbsrv\HPCHEM1\ECD_0\Data\P0012725\
 Data File : P0109114.D
 Signal(s) : Signal #1: ECD1A.ch Signal #2: ECD2B.ch
 Acq On : 27 Jan 2025 10:34
 Operator : YP/AJ
 Sample : AR1254CCC500
 Misc :
 ALS Vial : 6 Sample Multiplier: 1

Instrument :
 ECD_0
 ClientSampleId :
 AR1254CCC500

Integration File signal 1: autoint1.e
 Integration File signal 2: autoint2.e
 Quant Time: Jan 27 23:23:40 2025
 Quant Method : Z:\pestpcbsrv\HPCHEM1\ECD_0\methods\P0012125.M
 Quant Title : GC EXTRACTABLES
 QLast Update : Wed Jan 22 03:46:11 2025
 Response via : Initial Calibration
 Integrator: ChemStation

Volume Inj. : 2 µl
 Signal #1 Phase : ZB-MR1 Signal #2 Phase: ZB-MR2
 Signal #1 Info : 30Mx0.32mmx 0.50µ Signal #2 Info : 30M x 0.32mm x 0.25µm

Compound	RT#1	RT#2	Resp#1	Resp#2	ng/ml	ng/ml

System Monitoring Compounds						
1) SA Tetrachlo...	3.699	3.696	407.7E6	271.9E6	53.961	50.726
2) SA Decachlor...	8.761	8.712	336.4E6	156.3E6	48.565	45.462
Target Compounds						
3) L1 AR-1016-1	4.794	4.800	4556801	2356354	18.062	14.553
4) L1 AR-1016-2	4.814	4.832	3581201	1472589	10.384	6.181 #
5) L1 AR-1016-3	4.870	5.018	2768762	59507425	11.342	456.423 #
6) L1 AR-1016-4	4.992	5.059	2477150	19490094	12.981	176.351 #
7) L1 AR-1016-5	5.249	5.272	56224320	3652497	269.323	25.445 #
8) L2 AR-1221-1	3.910	3.908	443898	183344	4.435	2.800 #
9) L2 AR-1221-2	4.002	3.996	6814569	4300453	91.585	87.075
10) L2 AR-1221-3	4.076	4.069	1494026	826524	7.182	5.694
11) L3 AR-1232-1	4.076	4.069	1494026	826524	9.048	7.156
12) L3 AR-1232-2	4.571	4.800	2091023	2356354	22.983	21.635
13) L3 AR-1232-3	4.814	4.977	3581201	1600895	22.361	26.696
14) L3 AR-1232-4	4.992	5.059	2477150	19490094	28.149	340.367 #
15) L3 AR-1232-5	5.034	5.231	90659811	36898791	1398.678	608.169 #
16) L4 AR-1242-1	4.794	4.781	4556801	2905857	21.450	20.333
17) L4 AR-1242-2	4.814	4.800	3581201	2356354	12.490	11.948
18) L4 AR-1242-3	4.870	4.977	2768762	1600895	13.525	14.681
19) L4 AR-1242-4	4.992	5.059	2477150	19490094	15.592	171.502 #
20) L4 AR-1242-5	5.645	5.584	27343739	138.8E6	163.705	1014.857 #
21) L5 AR-1248-1	4.794	4.781	4556801	2905857	28.557	27.077
22) L5 AR-1248-2	5.034	5.018	90659811	59507425	405.656	386.471
23) L5 AR-1248-3	5.249	5.059	56224320	19490094	205.303	117.854 #
24) L5 AR-1248-4	5.604	5.231	215.0E6	36898791	559.206	192.677 #
25) L5 AR-1248-5	5.645	5.624	27343739	18229921	102.924	99.502
26) L6 AR-1254-1	5.604	5.584	215.0E6	138.8E6	520.011	493.872
27) L6 AR-1254-2	5.753	5.731	188.5E6	122.3E6	520.874	488.766
28) L6 AR-1254-3	6.159	6.135	298.0E6	195.0E6	528.193	496.335
29) L6 AR-1254-4	6.389	6.362	189.6E6	115.7E6	550.185	524.935
30) L6 AR-1254-5	6.809	6.780	269.0E6	163.8E6	524.247	501.216
31) L7 AR-1260-1	6.291	6.265	150.7E6	96201070	395.320	381.676
32) L7 AR-1260-2	6.479	6.452	124.4E6	77142500	264.845	256.454
33) L7 AR-1260-3	6.879	6.605	23242171	75972566	59.358	272.904 #
34) L7 AR-1260-4	7.109	7.114	14618647	40360162	40.839	178.861 #
35) L7 AR-1260-5	7.350	7.348	31439433	6215480	37.670	12.414 #
36) L8 AR-1262-1	6.879	6.849	23242171	14283117	43.523	41.965
37) L8 AR-1262-2	7.350	7.317	31439433	18442222	34.193	33.253
38) L8 AR-1262-3	7.637	7.601	1074885	511963	2.948	2.387
39) L8 AR-1262-4	7.696	7.662	29869230	17360780	43.438	44.300
40) L8 AR-1262-5	8.196	8.158	1276343	688725	4.225	4.319
41) L9 AR-1268-1	7.637	7.601	1074885	511963	1.010	0.813

Data Path : Z:\pestpcbsrv\HPCHEM1\ECD_0\Data\P0012725\
 Data File : P0109114.D
 Signal(s) : Signal #1: ECD1A.ch Signal #2: ECD2B.ch
 Acq On : 27 Jan 2025 10:34
 Operator : YP/AJ
 Sample : AR1254CCC500
 Misc :
 ALS Vial : 6 Sample Multiplier: 1

Instrument :
 ECD_0
 ClientSampleId :
 AR1254CCC500

Integration File signal 1: autoint1.e
 Integration File signal 2: autoint2.e
 Quant Time: Jan 27 23:23:40 2025
 Quant Method : Z:\pestpcbsrv\HPCHEM1\ECD_0\methods\P0012125.M
 Quant Title : GC EXTRACTABLES
 QLast Update : Wed Jan 22 03:46:11 2025
 Response via : Initial Calibration
 Integrator: ChemStation

Volume Inj. : 2 µl
 Signal #1 Phase : ZB-MR1 Signal #2 Phase: ZB-MR2
 Signal #1 Info : 30Mx0.32mmx 0.50µ Signal #2 Info : 30M x 0.32mm x 0.25µm

	Compound	RT#1	RT#2	Resp#1	Resp#2	ng/ml	ng/ml
42)	L9 AR-1268-2	7.696	7.662	29869230	17360780	30.821	30.397
43)	L9 AR-1268-3	7.910	7.872	1026099	618234	1.274	1.342
44)	L9 AR-1268-4	8.196	8.158	1276343	688725	3.726	3.815
45)	L9 AR-1268-5	8.496	8.453	2953973	1163830	1.235	0.973

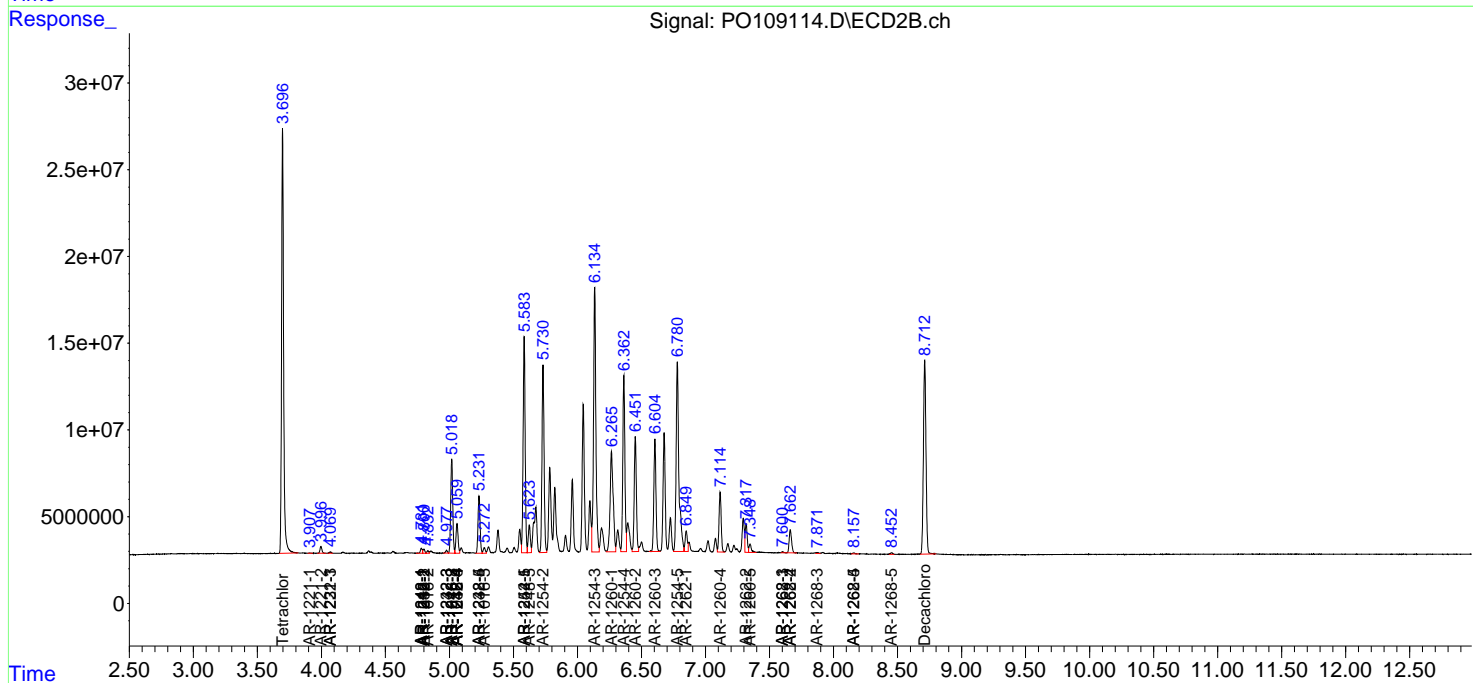
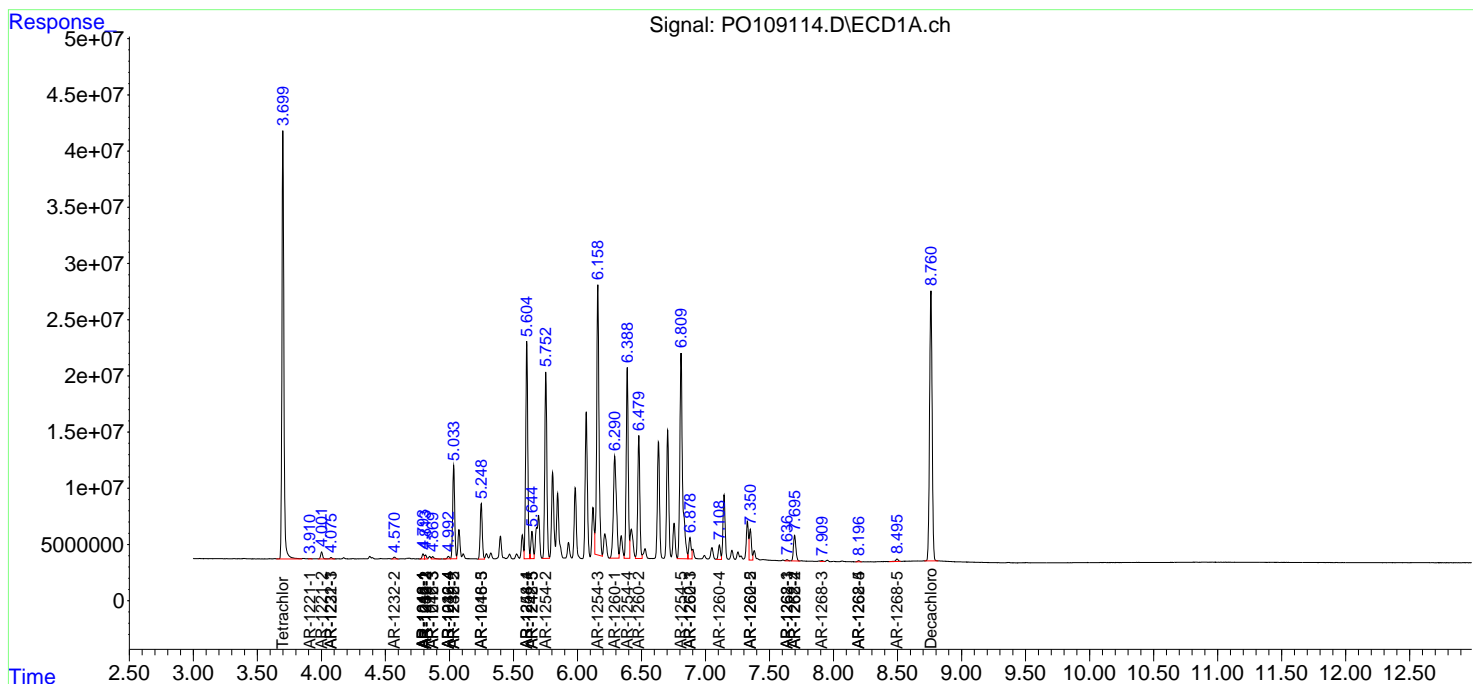
(f)=RT Delta > 1/2 Window (#)=Amounts differ by > 25% (m)=manual int.

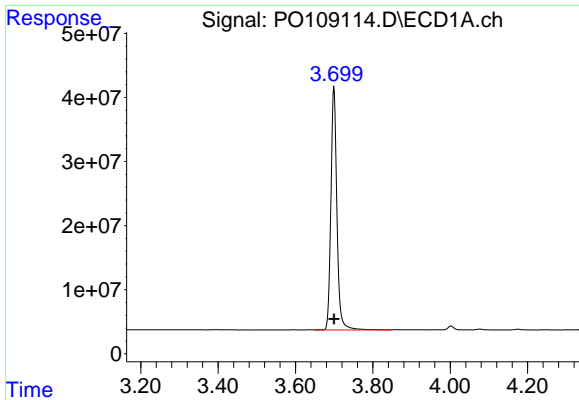
Data Path : Z:\pestpcbsrv\HPCHEM1\ECD_O\Data\PO012725\
 Data File : PO109114.D
 Signal(s) : Signal #1: ECD1A.ch Signal #2: ECD2B.ch
 Acq On : 27 Jan 2025 10:34
 Operator : YP/AJ
 Sample : AR1254CCC500
 Misc :
 ALS Vial : 6 Sample Multiplier: 1

Instrument :
 ECD_O
 ClientSampleId :
 AR1254CCC500

Integration File signal 1: autoint1.e
 Integration File signal 2: autoint2.e
 Quant Time: Jan 27 23:23:40 2025
 Quant Method : Z:\pestpcbsrv\HPCHEM1\ECD_O\methods\PO012125.M
 Quant Title : GC EXTRACTABLES
 QLast Update : Wed Jan 22 03:46:11 2025
 Response via : Initial Calibration
 Integrator: ChemStation

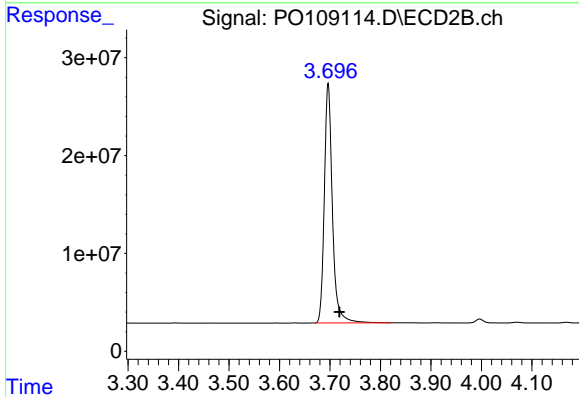
Volume Inj. : 2 µl
 Signal #1 Phase : ZB-MR1 Signal #2 Phase: ZB-MR2
 Signal #1 Info : 30Mx0.32mmx 0.50µ Signal #2 Info : 30M x 0.32mm x 0.25µm



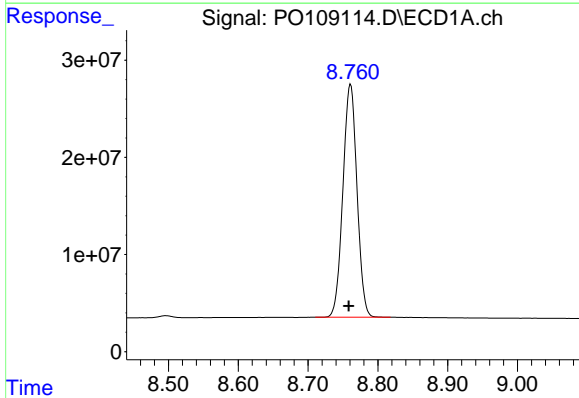


#1 Tetrachloro-m-xylene
 R.T.: 3.699 min
 Delta R.T.: 0.000 min
 Response: 407749262
 Conc: 53.96 ng/ml

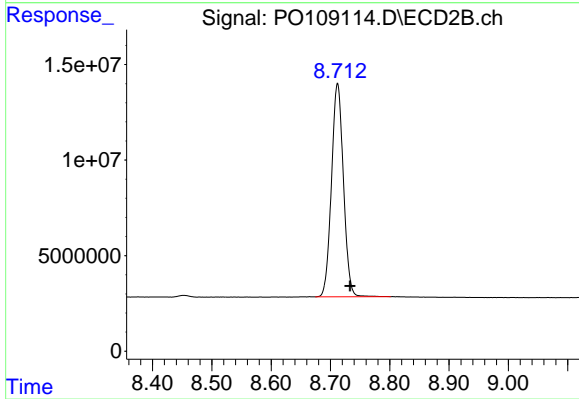
Instrument :
 ECD_O
 ClientSampleId :
 AR1254CCC500



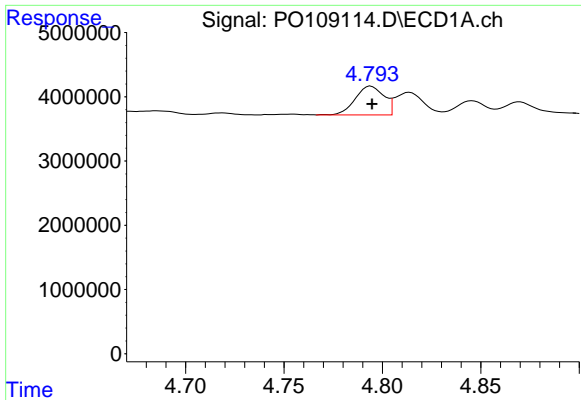
#1 Tetrachloro-m-xylene
 R.T.: 3.696 min
 Delta R.T.: -0.022 min
 Response: 271906126
 Conc: 50.73 ng/ml



#2 Decachlorobiphenyl
 R.T.: 8.761 min
 Delta R.T.: 0.003 min
 Response: 336446526
 Conc: 48.57 ng/ml



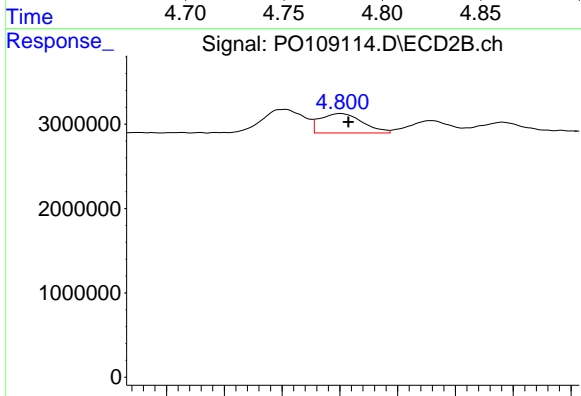
#2 Decachlorobiphenyl
 R.T.: 8.712 min
 Delta R.T.: -0.021 min
 Response: 156331063
 Conc: 45.46 ng/ml



#3 AR-1016-1

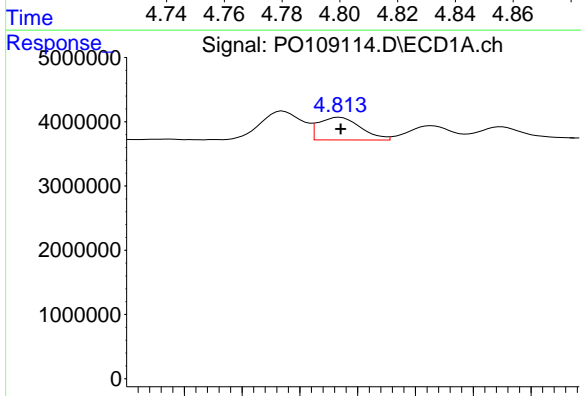
R.T.: 4.794 min
 Delta R.T.: 0.000 min
 Response: 4556801
 Conc: 18.06 ng/ml

Instrument :
 ECD_O
 ClientSampleId :
 AR1254CCC500



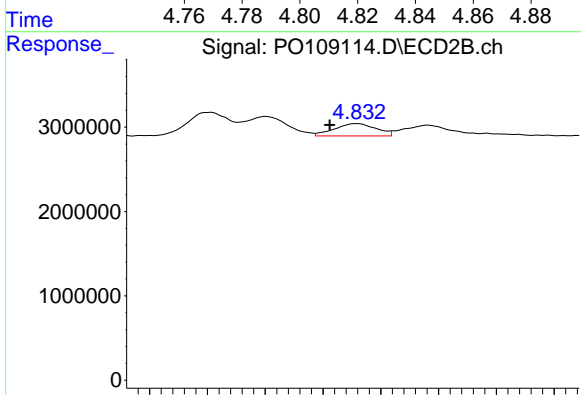
#3 AR-1016-1

R.T.: 4.800 min
 Delta R.T.: -0.003 min
 Response: 2356354
 Conc: 14.55 ng/ml



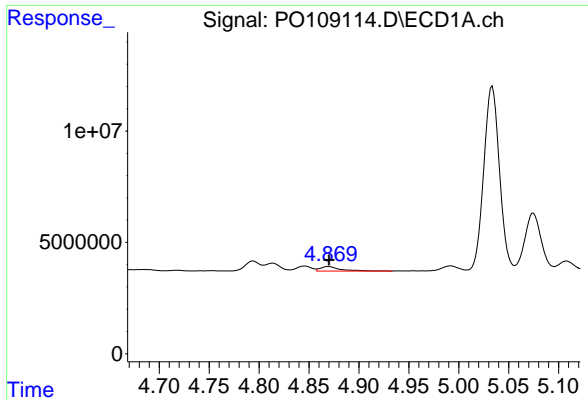
#4 AR-1016-2

R.T.: 4.814 min
 Delta R.T.: 0.000 min
 Response: 3581201
 Conc: 10.38 ng/ml



#4 AR-1016-2

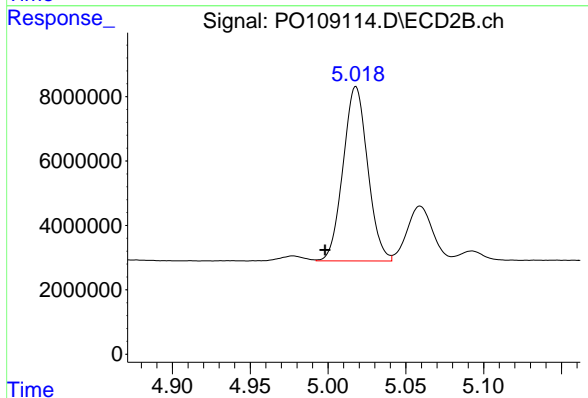
R.T.: 4.832 min
 Delta R.T.: 0.009 min
 Response: 1472589
 Conc: 6.18 ng/ml



#5 AR-1016-3

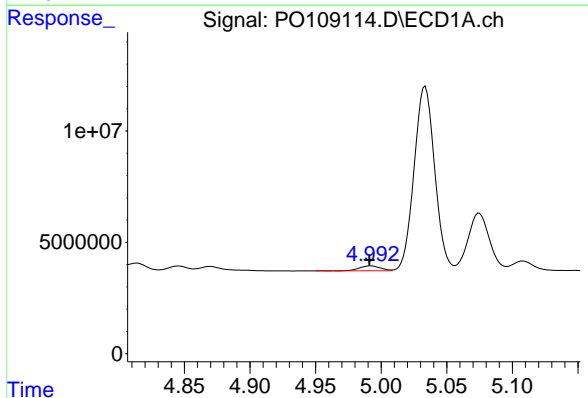
R.T.: 4.870 min
 Delta R.T.: 0.000 min
 Response: 2768762
 Conc: 11.34 ng/ml

Instrument :
 ECD_O
 ClientSampleId :
 AR1254CCC500



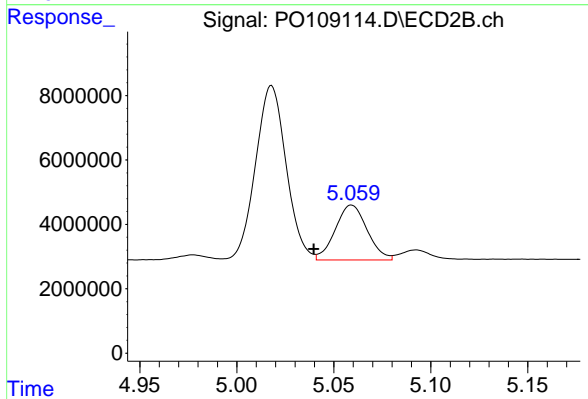
#5 AR-1016-3

R.T.: 5.018 min
 Delta R.T.: 0.020 min
 Response: 59507425
 Conc: 456.42 ng/ml



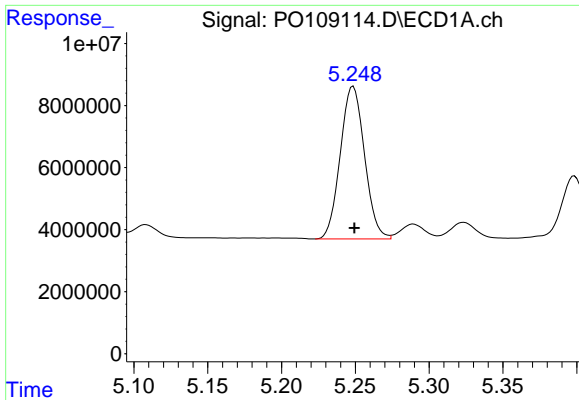
#6 AR-1016-4

R.T.: 4.992 min
 Delta R.T.: 0.000 min
 Response: 2477150
 Conc: 12.98 ng/ml



#6 AR-1016-4

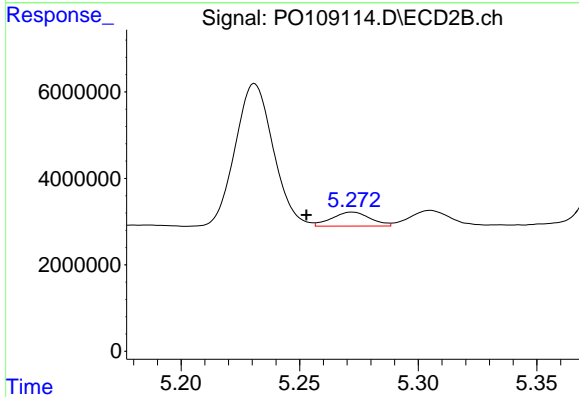
R.T.: 5.059 min
 Delta R.T.: 0.020 min
 Response: 19490094
 Conc: 176.35 ng/ml



#7 AR-1016-5

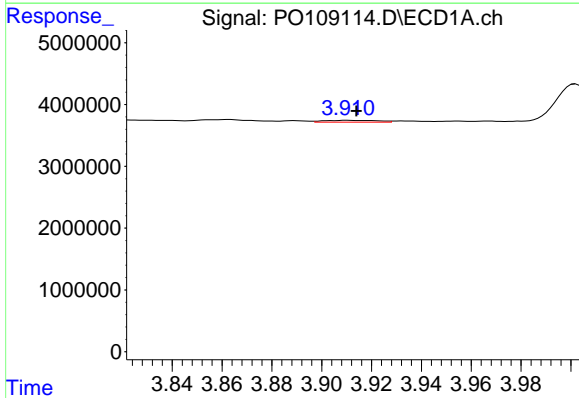
R.T.: 5.249 min
 Delta R.T.: 0.000 min
 Response: 56224320
 Conc: 269.32 ng/ml

Instrument :
 ECD_O
 ClientSampleId :
 AR1254CCC500



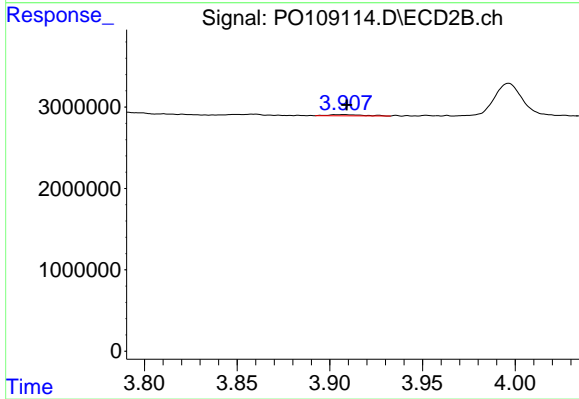
#7 AR-1016-5

R.T.: 5.272 min
 Delta R.T.: 0.019 min
 Response: 3652497
 Conc: 25.45 ng/ml



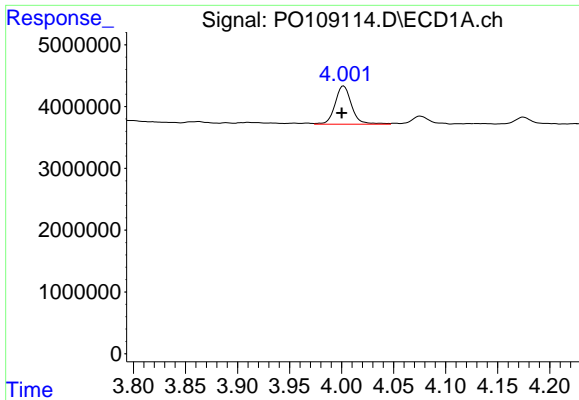
#8 AR-1221-1

R.T.: 3.910 min
 Delta R.T.: -0.004 min
 Response: 443898
 Conc: 4.43 ng/ml



#8 AR-1221-1

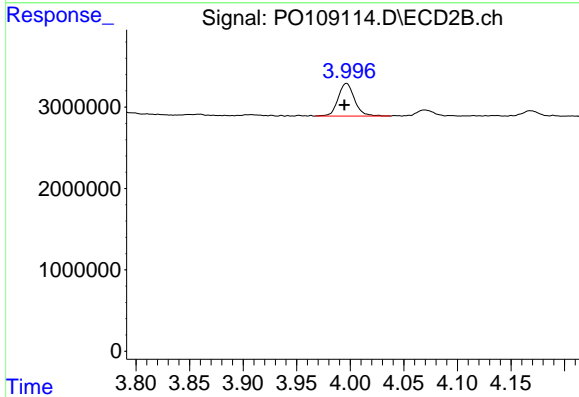
R.T.: 3.908 min
 Delta R.T.: -0.001 min
 Response: 183344
 Conc: 2.80 ng/ml



#9 AR-1221-2

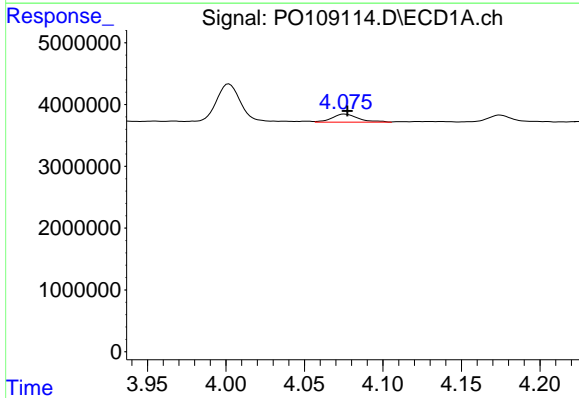
R.T.: 4.002 min
 Delta R.T.: 0.002 min
 Response: 6814569
 Conc: 91.58 ng/ml

Instrument :
 ECD_O
 ClientSampleId :
 AR1254CCC500



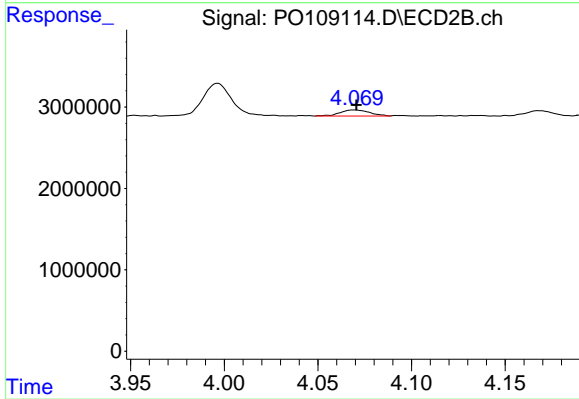
#9 AR-1221-2

R.T.: 3.996 min
 Delta R.T.: 0.002 min
 Response: 4300453
 Conc: 87.08 ng/ml



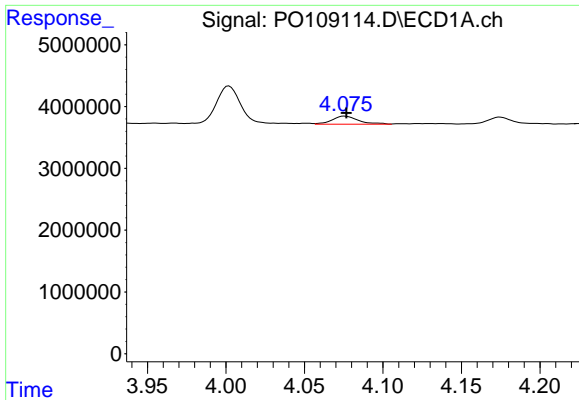
#10 AR-1221-3

R.T.: 4.076 min
 Delta R.T.: -0.002 min
 Response: 1494026
 Conc: 7.18 ng/ml



#10 AR-1221-3

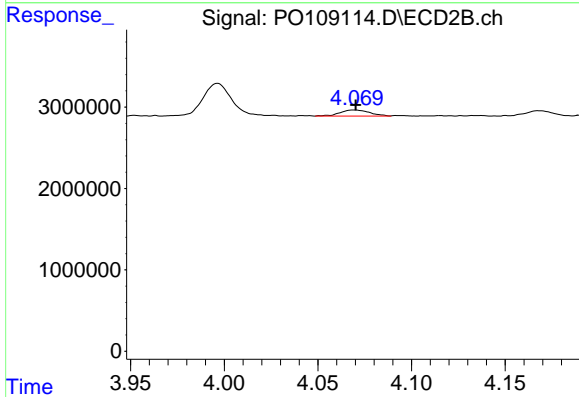
R.T.: 4.069 min
 Delta R.T.: -0.001 min
 Response: 826524
 Conc: 5.69 ng/ml



#11 AR-1232-1

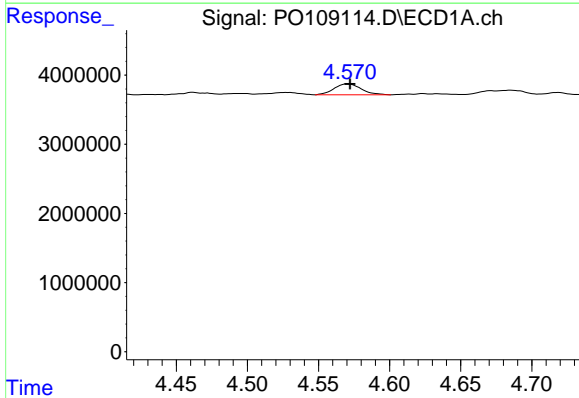
R.T.: 4.076 min
 Delta R.T.: -0.001 min
 Response: 1494026
 Conc: 9.05 ng/ml

Instrument :
 ECD_O
 ClientSampleId :
 AR1254CCC500



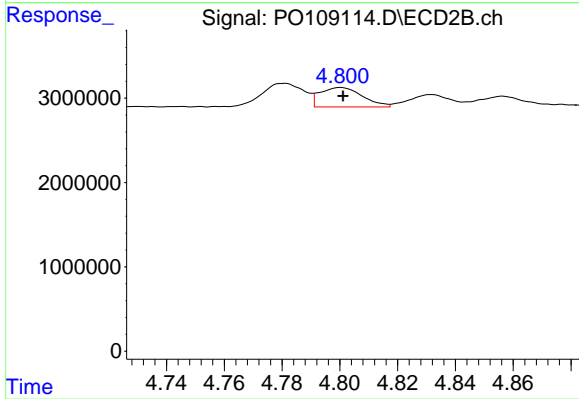
#11 AR-1232-1

R.T.: 4.069 min
 Delta R.T.: 0.000 min
 Response: 826524
 Conc: 7.16 ng/ml



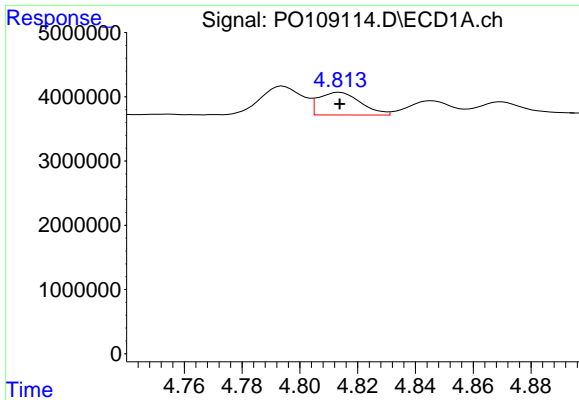
#12 AR-1232-2

R.T.: 4.571 min
 Delta R.T.: -0.001 min
 Response: 2091023
 Conc: 22.98 ng/ml



#12 AR-1232-2

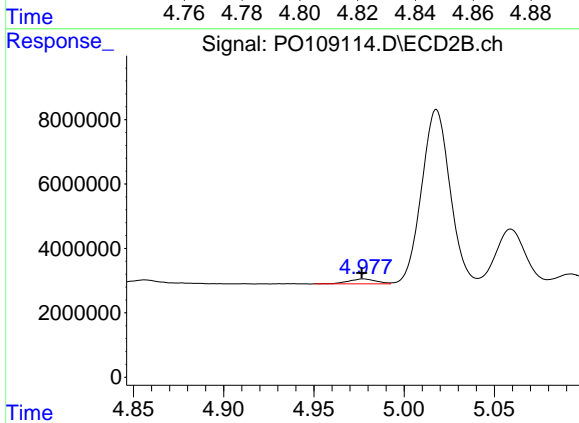
R.T.: 4.800 min
 Delta R.T.: 0.000 min
 Response: 2356354
 Conc: 21.64 ng/ml



#13 AR-1232-3

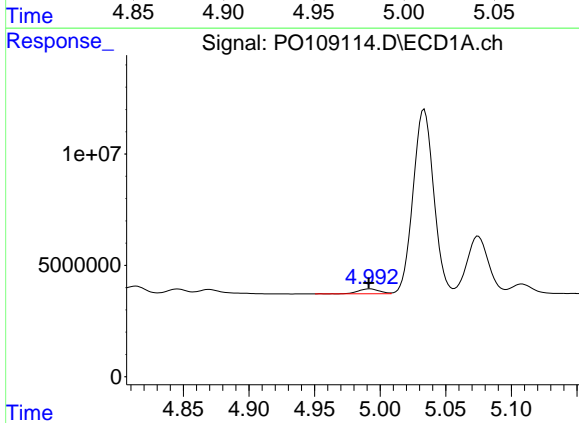
R.T.: 4.814 min
 Delta R.T.: 0.000 min
 Response: 3581201
 Conc: 22.36 ng/ml

Instrument :
 ECD_O
 ClientSampleId :
 AR1254CCC500



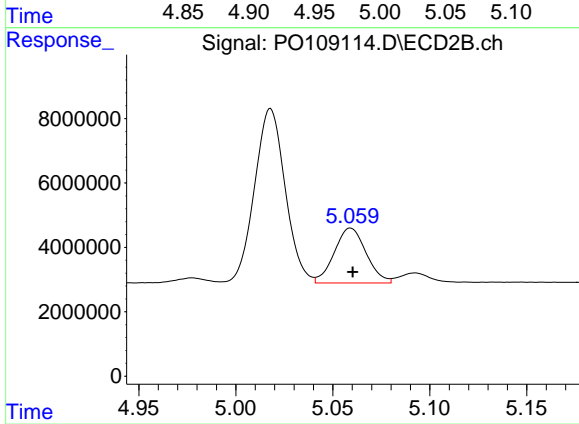
#13 AR-1232-3

R.T.: 4.977 min
 Delta R.T.: 0.000 min
 Response: 1600895
 Conc: 26.70 ng/ml



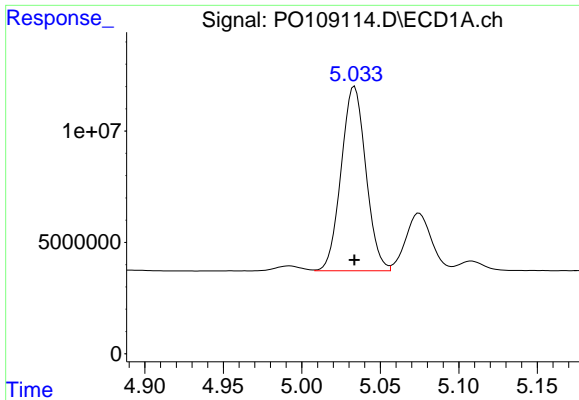
#14 AR-1232-4

R.T.: 4.992 min
 Delta R.T.: 0.000 min
 Response: 2477150
 Conc: 28.15 ng/ml



#14 AR-1232-4

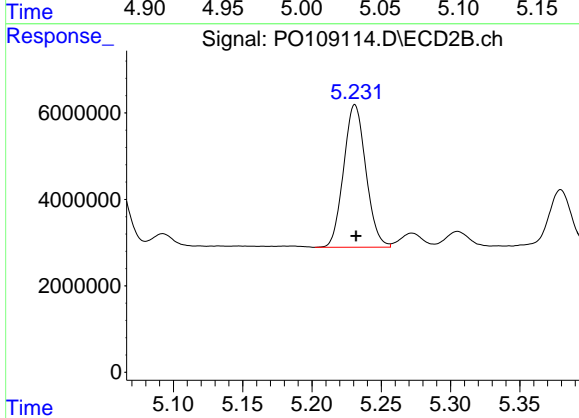
R.T.: 5.059 min
 Delta R.T.: -0.001 min
 Response: 19490094
 Conc: 340.37 ng/ml



#15 AR-1232-5

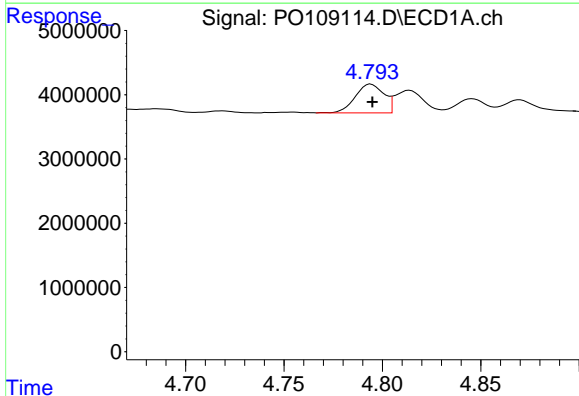
R.T.: 5.034 min
 Delta R.T.: 0.000 min
 Response: 90659811
 Conc: 1398.68 ng/ml

Instrument :
 ECD_O
 ClientSampleId :
 AR1254CCC500



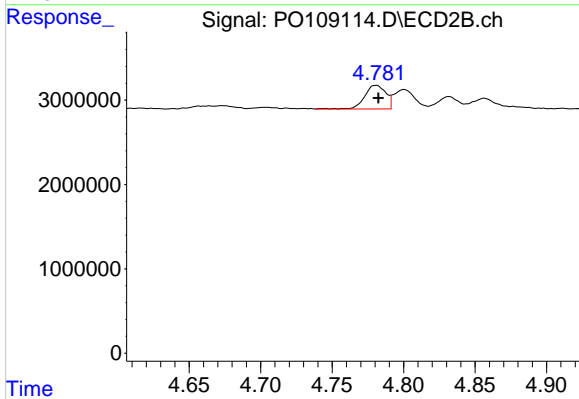
#15 AR-1232-5

R.T.: 5.231 min
 Delta R.T.: 0.000 min
 Response: 36898791
 Conc: 608.17 ng/ml



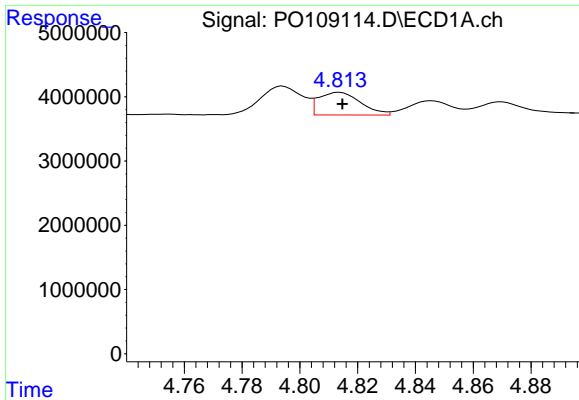
#16 AR-1242-1

R.T.: 4.794 min
 Delta R.T.: 0.000 min
 Response: 4556801
 Conc: 21.45 ng/ml



#16 AR-1242-1

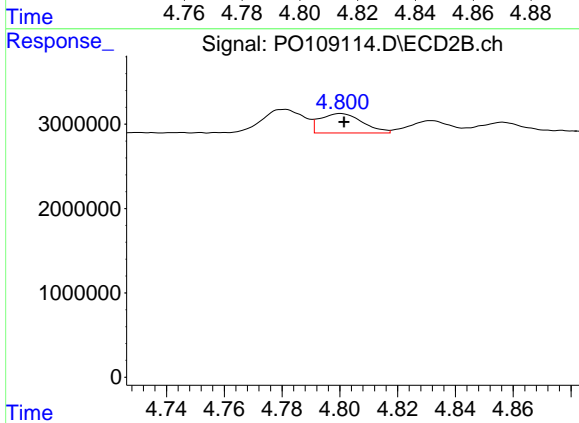
R.T.: 4.781 min
 Delta R.T.: -0.002 min
 Response: 2905857
 Conc: 20.33 ng/ml



#17 AR-1242-2

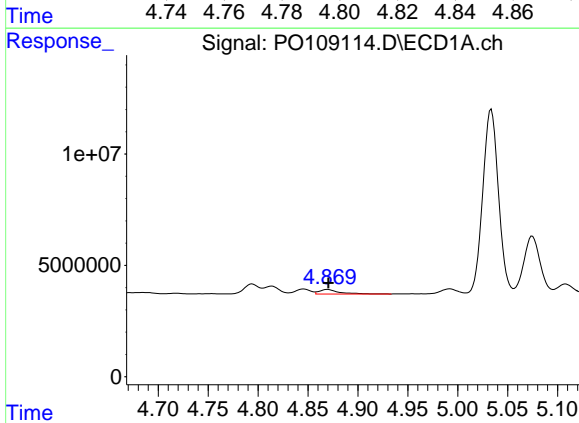
R.T.: 4.814 min
 Delta R.T.: 0.000 min
 Response: 3581201
 Conc: 12.49 ng/ml

Instrument :
 ECD_O
 ClientSampleId :
 AR1254CCC500



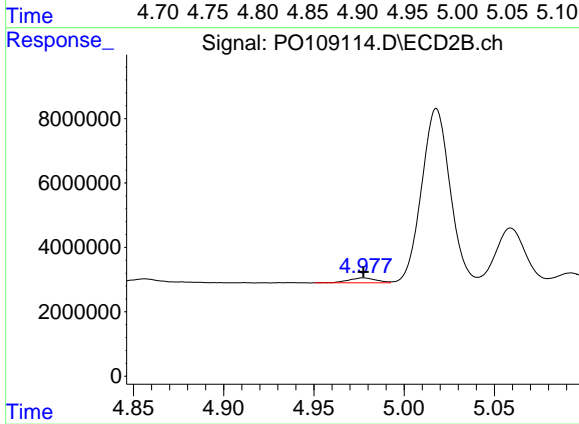
#17 AR-1242-2

R.T.: 4.800 min
 Delta R.T.: -0.001 min
 Response: 2356354
 Conc: 11.95 ng/ml



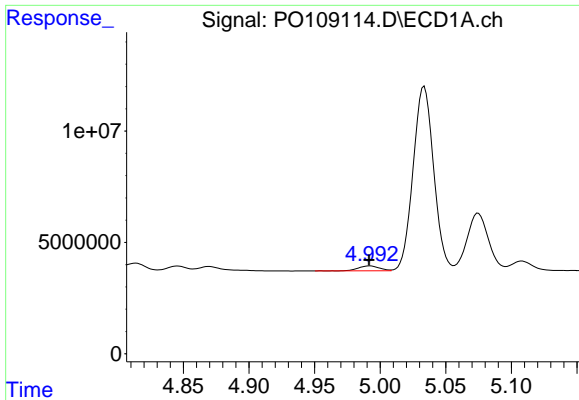
#18 AR-1242-3

R.T.: 4.870 min
 Delta R.T.: 0.000 min
 Response: 2768762
 Conc: 13.53 ng/ml



#18 AR-1242-3

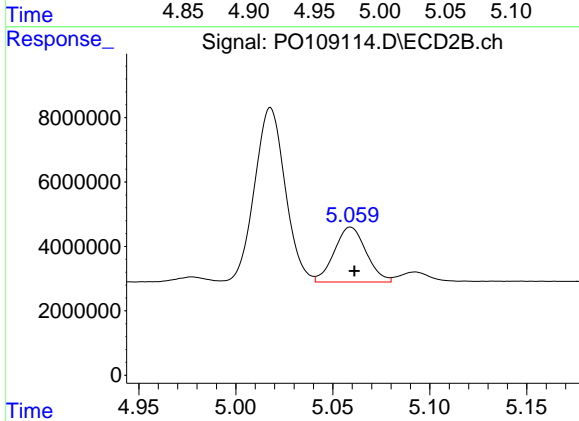
R.T.: 4.977 min
 Delta R.T.: 0.000 min
 Response: 1600895
 Conc: 14.68 ng/ml



#19 AR-1242-4

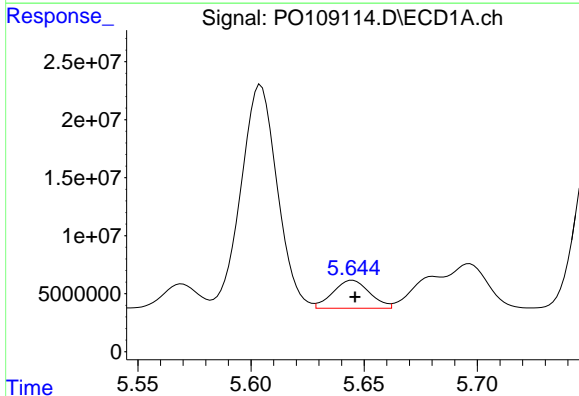
R.T.: 4.992 min
 Delta R.T.: 0.000 min
 Response: 2477150
 Conc: 15.59 ng/ml

Instrument :
 ECD_O
 ClientSampleId :
 AR1254CCC500



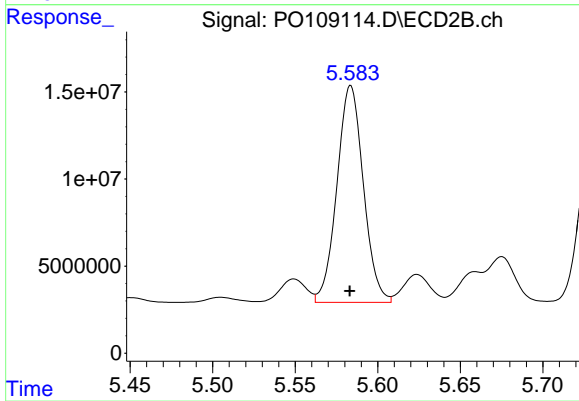
#19 AR-1242-4

R.T.: 5.059 min
 Delta R.T.: -0.002 min
 Response: 19490094
 Conc: 171.50 ng/ml



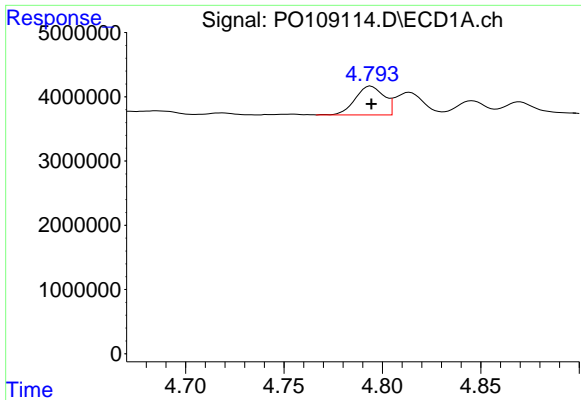
#20 AR-1242-5

R.T.: 5.645 min
 Delta R.T.: -0.001 min
 Response: 27343739
 Conc: 163.70 ng/ml



#20 AR-1242-5

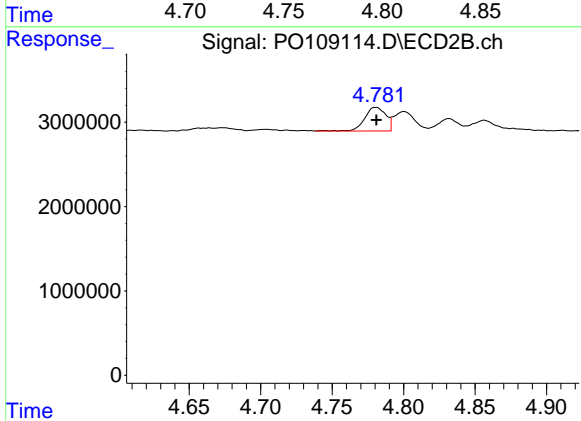
R.T.: 5.584 min
 Delta R.T.: 0.000 min
 Response: 138818970
 Conc: 1014.86 ng/ml



#21 AR-1248-1

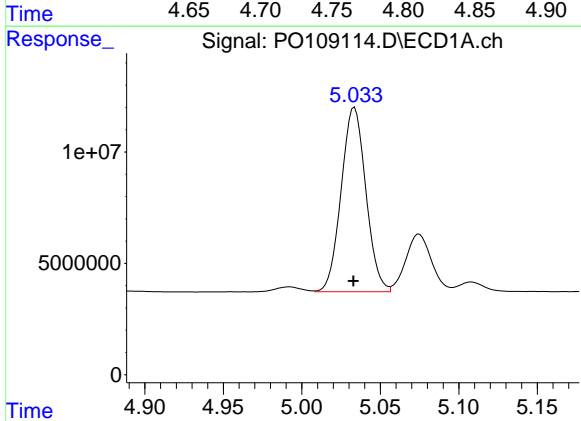
R.T.: 4.794 min
 Delta R.T.: 0.000 min
 Response: 4556801
 Conc: 28.56 ng/ml

Instrument :
 ECD_O
 ClientSampleId :
 AR1254CCC500



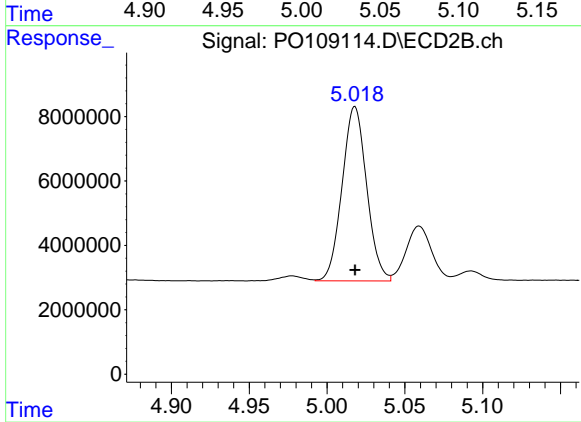
#21 AR-1248-1

R.T.: 4.781 min
 Delta R.T.: 0.000 min
 Response: 2905857
 Conc: 27.08 ng/ml



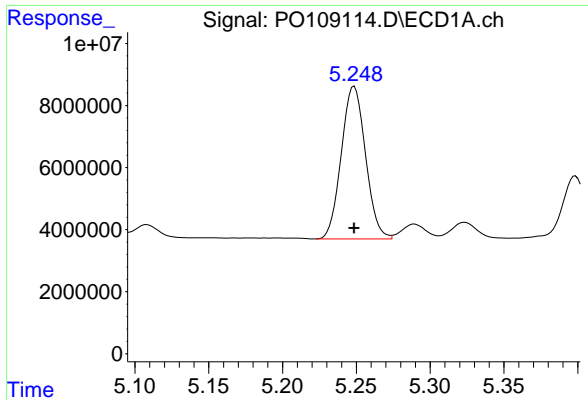
#22 AR-1248-2

R.T.: 5.034 min
 Delta R.T.: 0.000 min
 Response: 90659811
 Conc: 405.66 ng/ml



#22 AR-1248-2

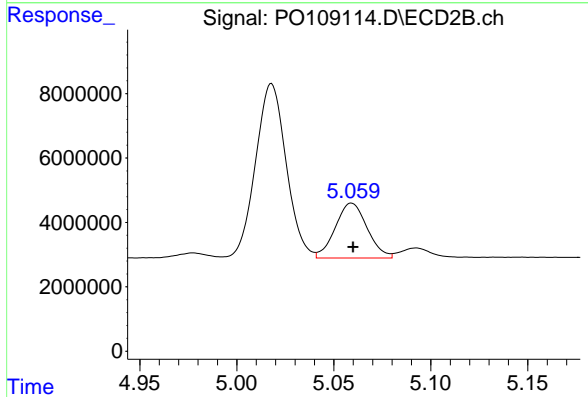
R.T.: 5.018 min
 Delta R.T.: 0.000 min
 Response: 59507425
 Conc: 386.47 ng/ml



#23 AR-1248-3

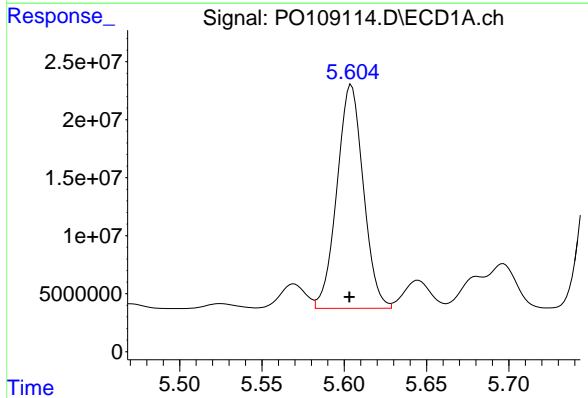
R.T.: 5.249 min
 Delta R.T.: 0.000 min
 Response: 56224320
 Conc: 205.30 ng/ml

Instrument :
 ECD_O
 ClientSampleId :
 AR1254CCC500



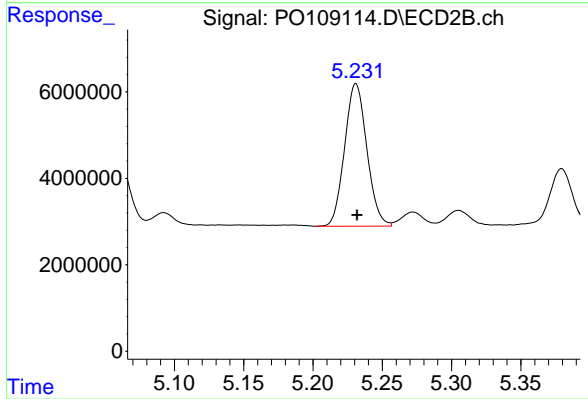
#23 AR-1248-3

R.T.: 5.059 min
 Delta R.T.: 0.000 min
 Response: 19490094
 Conc: 117.85 ng/ml



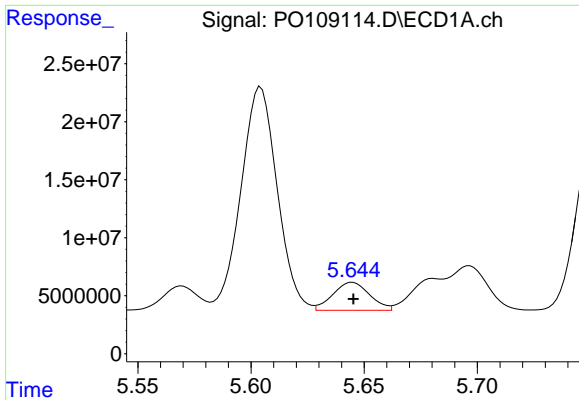
#24 AR-1248-4

R.T.: 5.604 min
 Delta R.T.: 0.001 min
 Response: 215040711
 Conc: 559.21 ng/ml



#24 AR-1248-4

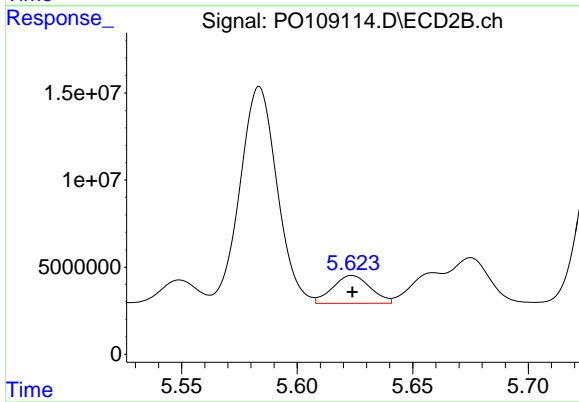
R.T.: 5.231 min
 Delta R.T.: 0.000 min
 Response: 36898791
 Conc: 192.68 ng/ml



#25 AR-1248-5

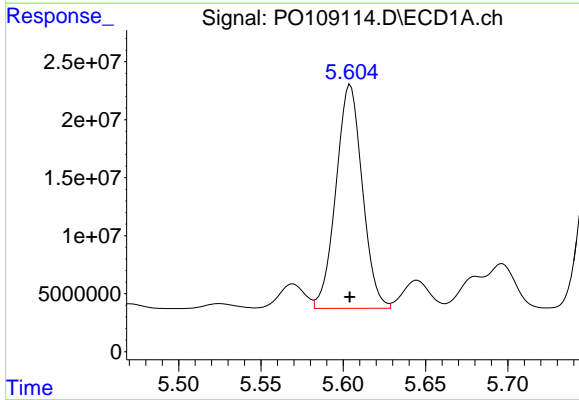
R.T.: 5.645 min
Delta R.T.: 0.000 min
Response: 27343739
Conc: 102.92 ng/ml

Instrument :
ECD_O
ClientSampleId :
AR1254CCC500



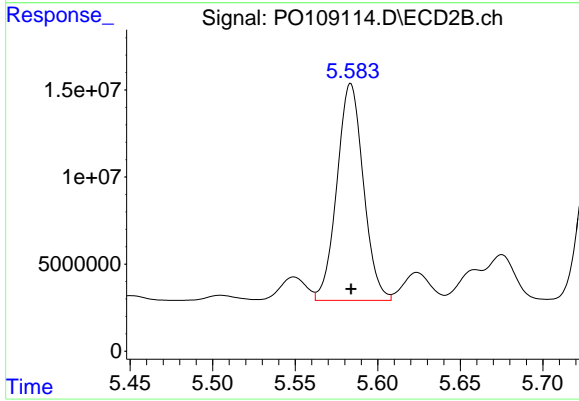
#25 AR-1248-5

R.T.: 5.624 min
Delta R.T.: 0.000 min
Response: 18229921
Conc: 99.50 ng/ml



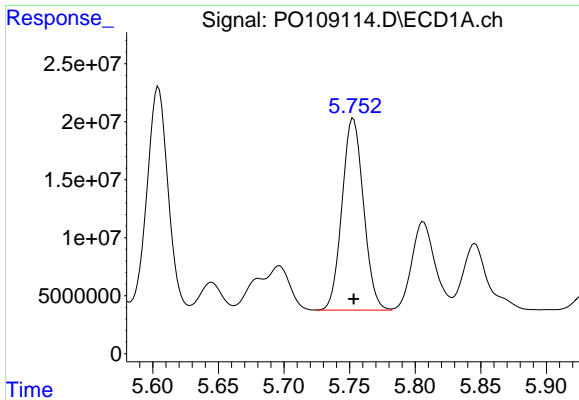
#26 AR-1254-1

R.T.: 5.604 min
Delta R.T.: 0.000 min
Response: 215040711
Conc: 520.01 ng/ml



#26 AR-1254-1

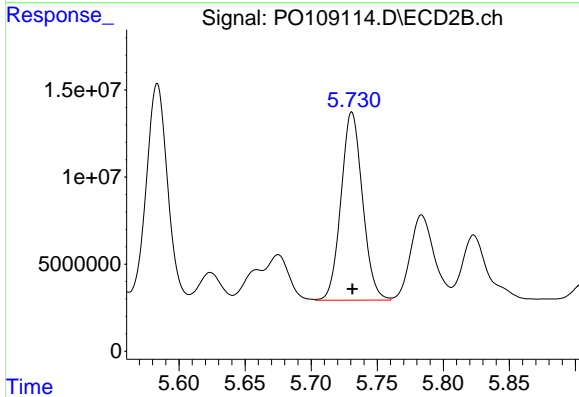
R.T.: 5.584 min
Delta R.T.: 0.000 min
Response: 138818970
Conc: 493.87 ng/ml



#27 AR-1254-2

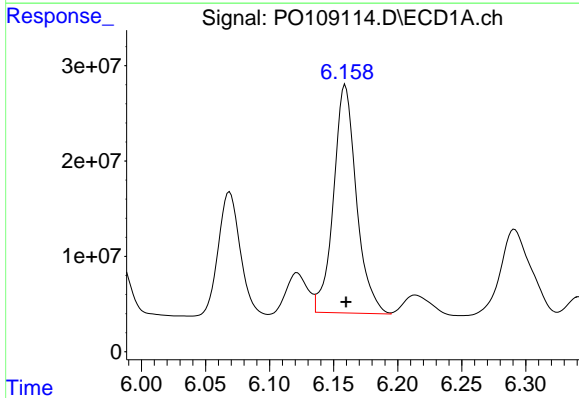
R.T.: 5.753 min
 Delta R.T.: 0.000 min
 Response: 188465583
 Conc: 520.87 ng/ml

Instrument :
 ECD_O
 ClientSampleId :
 AR1254CCC500



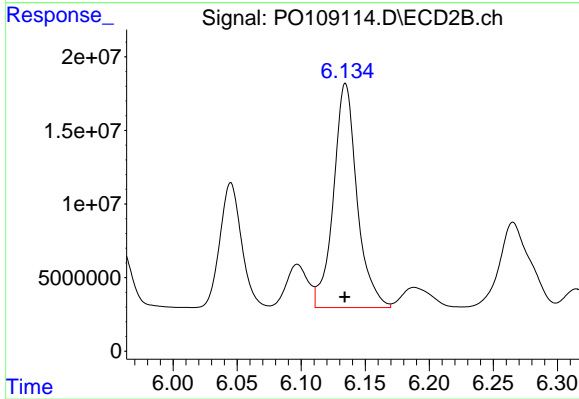
#27 AR-1254-2

R.T.: 5.731 min
 Delta R.T.: 0.000 min
 Response: 122319887
 Conc: 488.77 ng/ml



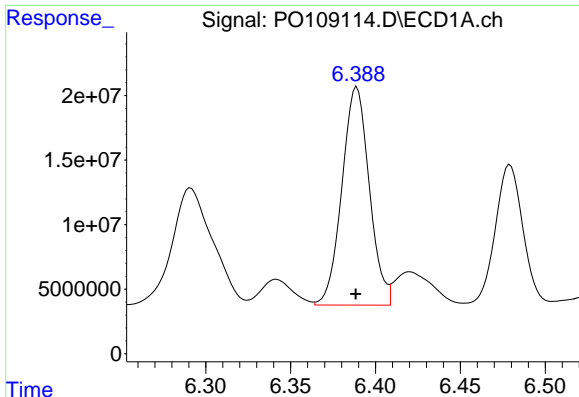
#28 AR-1254-3

R.T.: 6.159 min
 Delta R.T.: 0.000 min
 Response: 297964756
 Conc: 528.19 ng/ml



#28 AR-1254-3

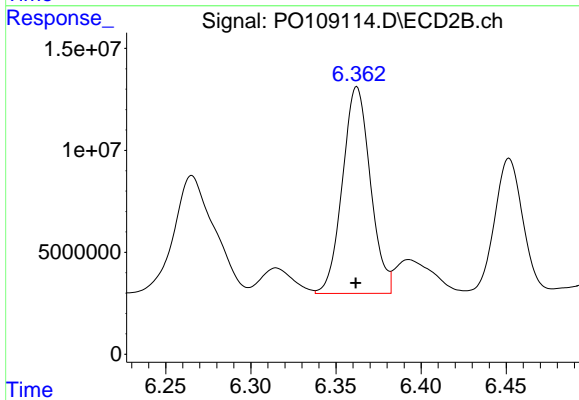
R.T.: 6.135 min
 Delta R.T.: 0.000 min
 Response: 194971634
 Conc: 496.34 ng/ml



#29 AR-1254-4

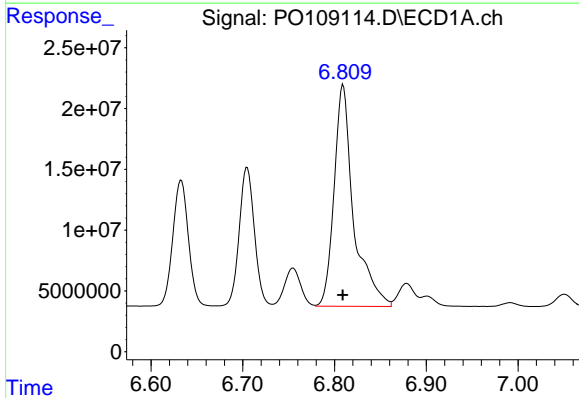
R.T.: 6.389 min
 Delta R.T.: 0.000 min
 Response: 189604967
 Conc: 550.18 ng/ml

Instrument :
 ECD_O
 ClientSampleId :
 AR1254CCC500



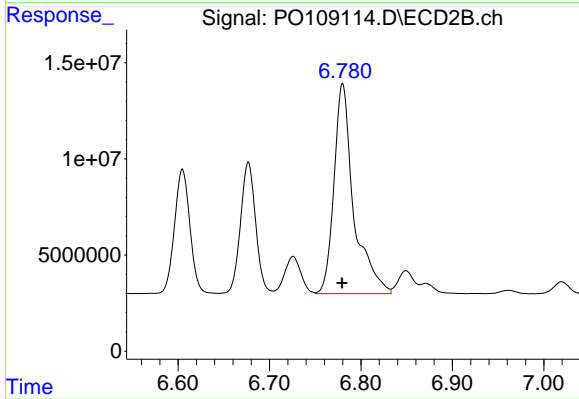
#29 AR-1254-4

R.T.: 6.362 min
 Delta R.T.: 0.000 min
 Response: 115670535
 Conc: 524.93 ng/ml



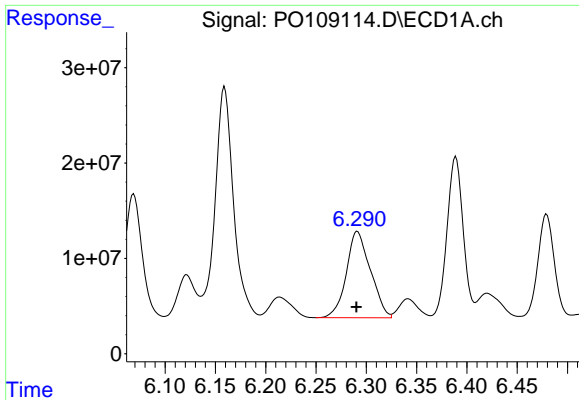
#30 AR-1254-5

R.T.: 6.809 min
 Delta R.T.: 0.000 min
 Response: 268989790
 Conc: 524.25 ng/ml



#30 AR-1254-5

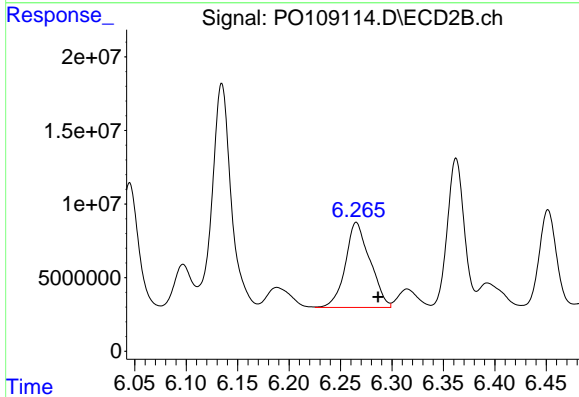
R.T.: 6.780 min
 Delta R.T.: 0.000 min
 Response: 163754687
 Conc: 501.22 ng/ml



#31 AR-1260-1

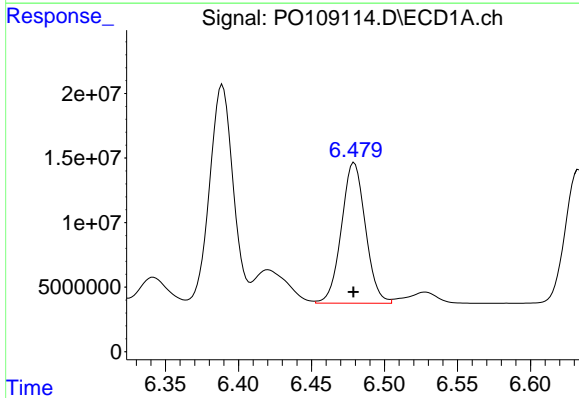
R.T.: 6.291 min
 Delta R.T.: 0.000 min
 Response: 150678566
 Conc: 395.32 ng/ml

Instrument :
 ECD_O
 ClientSampleId :
 AR1254CCC500



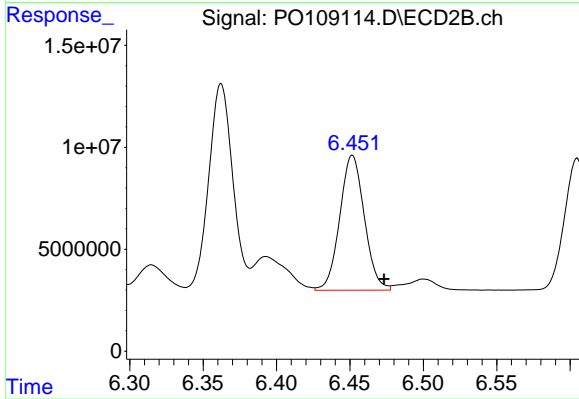
#31 AR-1260-1

R.T.: 6.265 min
 Delta R.T.: -0.021 min
 Response: 96201070
 Conc: 381.68 ng/ml



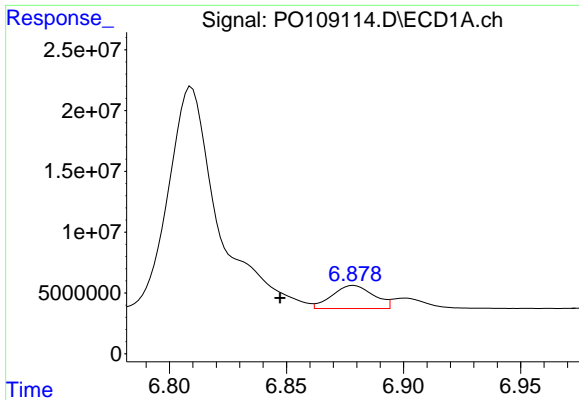
#32 AR-1260-2

R.T.: 6.479 min
 Delta R.T.: 0.000 min
 Response: 124366121
 Conc: 264.85 ng/ml



#32 AR-1260-2

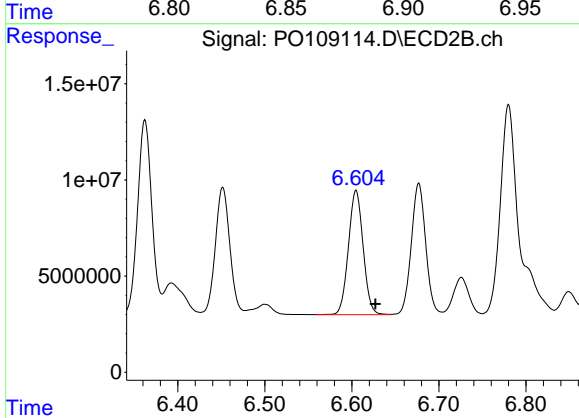
R.T.: 6.452 min
 Delta R.T.: -0.021 min
 Response: 77142500
 Conc: 256.45 ng/ml



#33 AR-1260-3

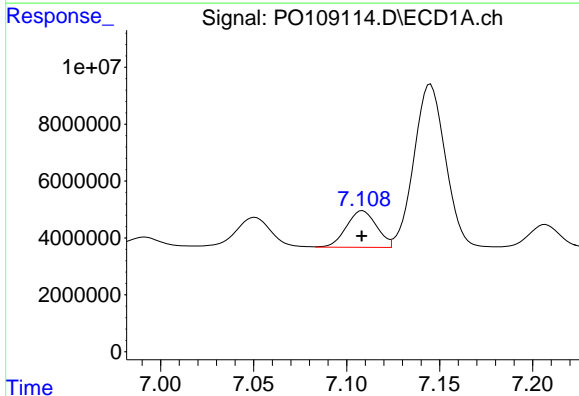
R.T.: 6.879 min
 Delta R.T.: 0.032 min
 Response: 23242171
 Conc: 59.36 ng/ml

Instrument :
 ECD_O
 ClientSampleId :
 AR1254CCC500



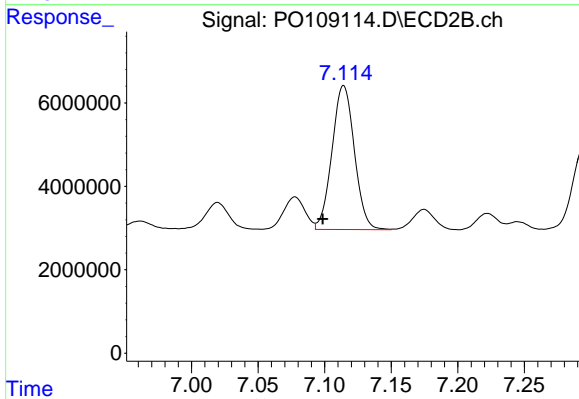
#33 AR-1260-3

R.T.: 6.605 min
 Delta R.T.: -0.022 min
 Response: 75972566
 Conc: 272.90 ng/ml



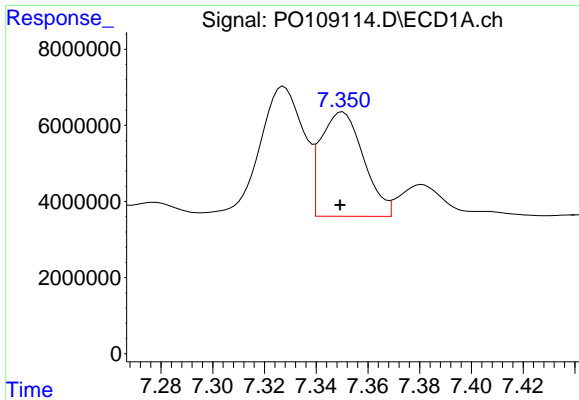
#34 AR-1260-4

R.T.: 7.109 min
 Delta R.T.: 0.000 min
 Response: 14618647
 Conc: 40.84 ng/ml



#34 AR-1260-4

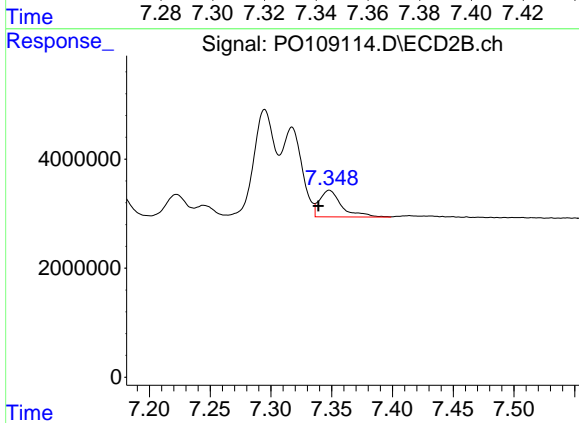
R.T.: 7.114 min
 Delta R.T.: 0.016 min
 Response: 40360162
 Conc: 178.86 ng/ml



#35 AR-1260-5

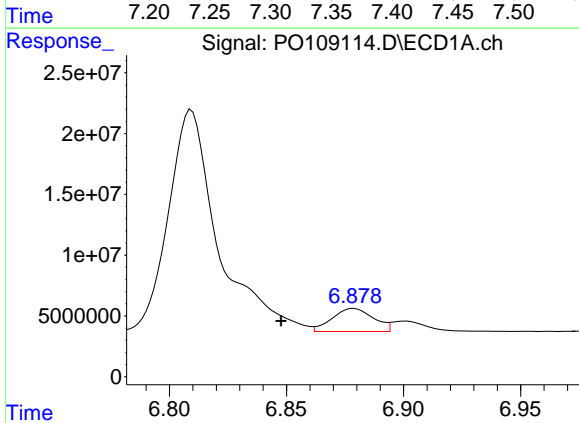
R.T.: 7.350 min
 Delta R.T.: 0.001 min
 Response: 31439433
 Conc: 37.67 ng/ml

Instrument :
 ECD_O
 ClientSampleId :
 AR1254CCC500



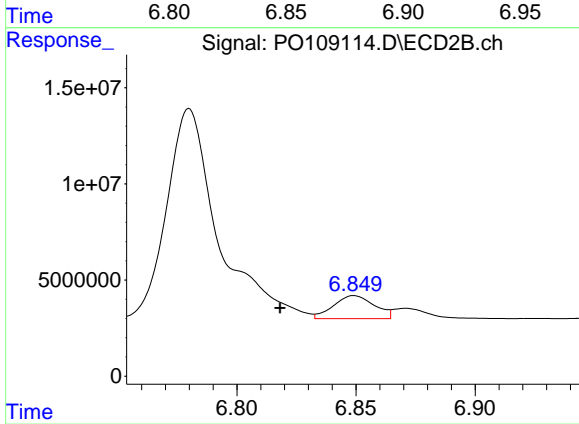
#35 AR-1260-5

R.T.: 7.348 min
 Delta R.T.: 0.009 min
 Response: 6215480
 Conc: 12.41 ng/ml



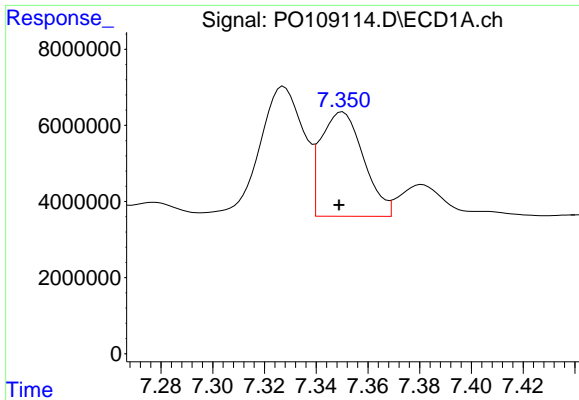
#36 AR-1262-1

R.T.: 6.879 min
 Delta R.T.: 0.031 min
 Response: 23242171
 Conc: 43.52 ng/ml



#36 AR-1262-1

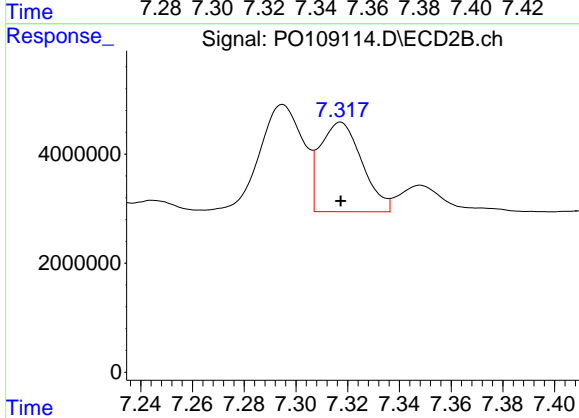
R.T.: 6.849 min
 Delta R.T.: 0.031 min
 Response: 14283117
 Conc: 41.96 ng/ml



#37 AR-1262-2

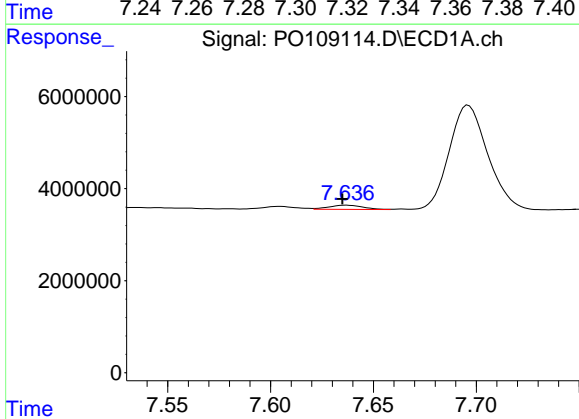
R.T.: 7.350 min
 Delta R.T.: 0.001 min
 Response: 31439433
 Conc: 34.19 ng/ml

Instrument :
 ECD_O
 ClientSampleId :
 AR1254CCC500



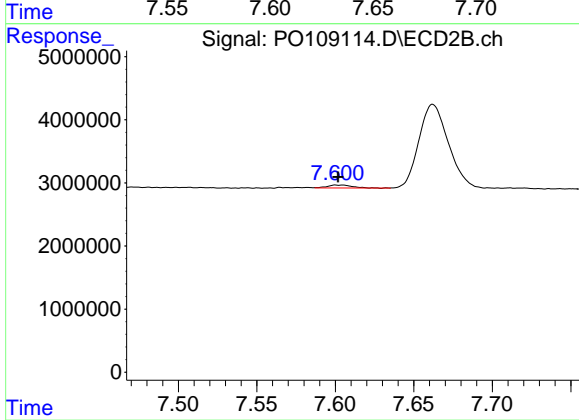
#37 AR-1262-2

R.T.: 7.317 min
 Delta R.T.: 0.000 min
 Response: 18442222
 Conc: 33.25 ng/ml



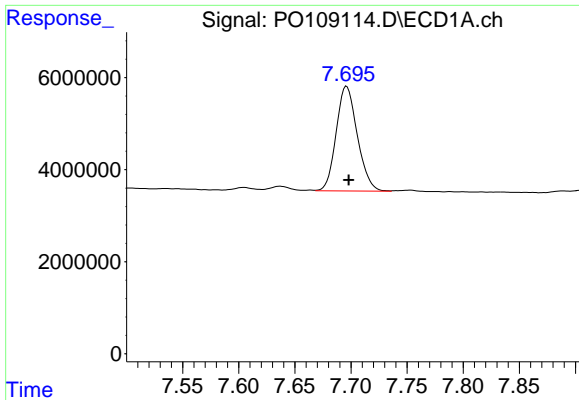
#38 AR-1262-3

R.T.: 7.637 min
 Delta R.T.: 0.002 min
 Response: 1074885
 Conc: 2.95 ng/ml



#38 AR-1262-3

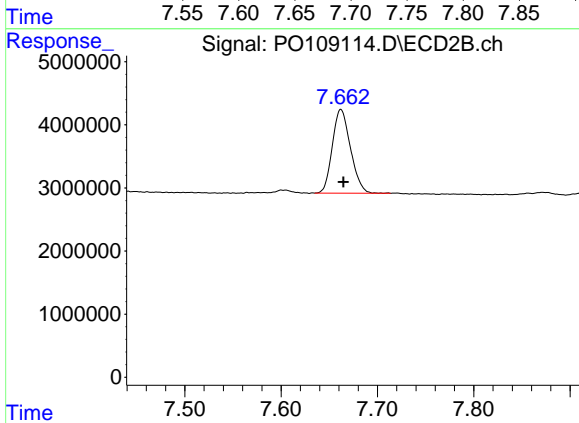
R.T.: 7.601 min
 Delta R.T.: -0.001 min
 Response: 511963
 Conc: 2.39 ng/ml



#39 AR-1262-4

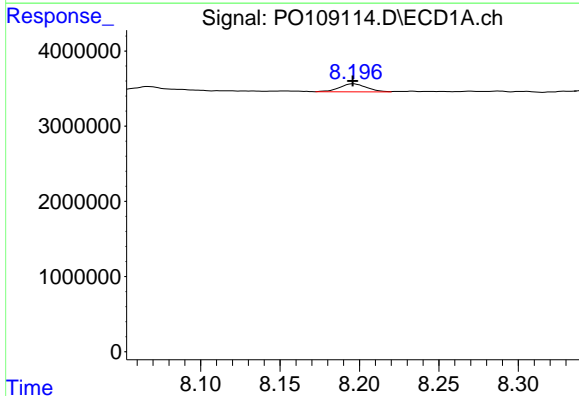
R.T.: 7.696 min
 Delta R.T.: -0.002 min
 Response: 29869230
 Conc: 43.44 ng/ml

Instrument :
 ECD_O
 ClientSampleId :
 AR1254CCC500



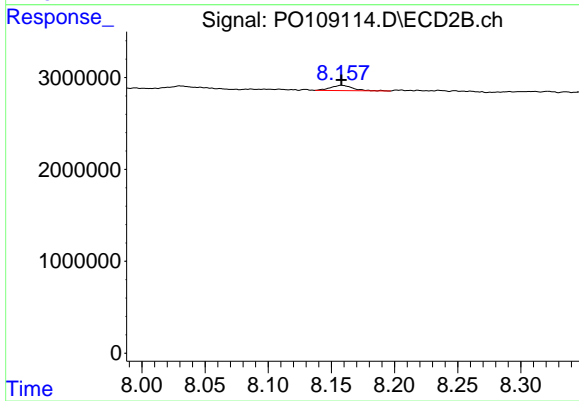
#39 AR-1262-4

R.T.: 7.662 min
 Delta R.T.: -0.003 min
 Response: 17360780
 Conc: 44.30 ng/ml



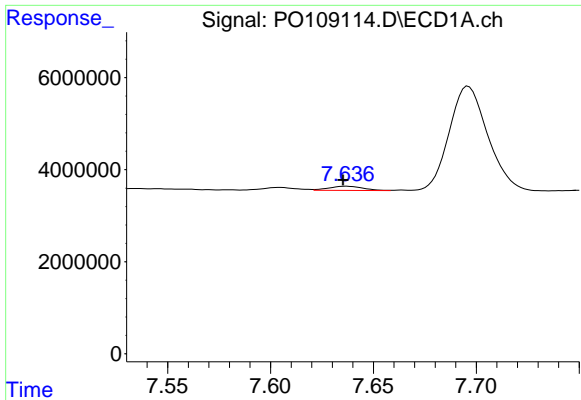
#40 AR-1262-5

R.T.: 8.196 min
 Delta R.T.: 0.000 min
 Response: 1276343
 Conc: 4.22 ng/ml



#40 AR-1262-5

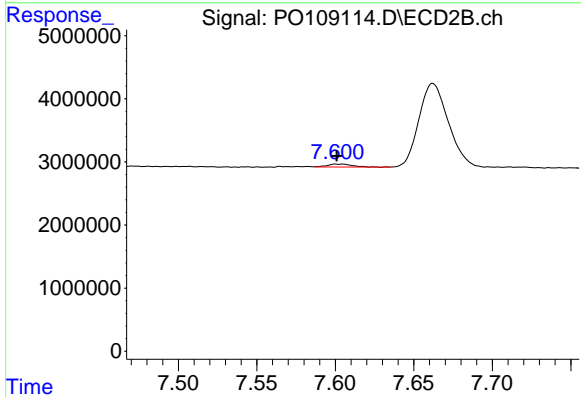
R.T.: 8.158 min
 Delta R.T.: 0.000 min
 Response: 688725
 Conc: 4.32 ng/ml



#41 AR-1268-1

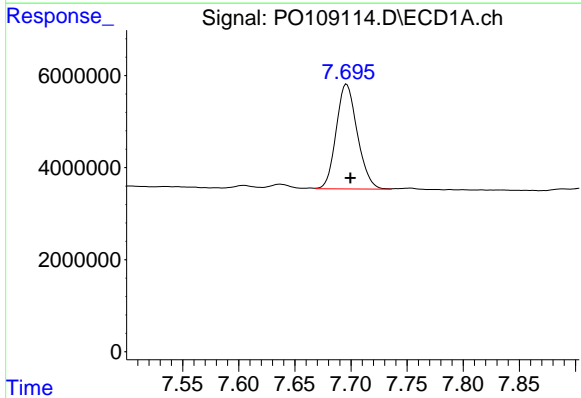
R.T.: 7.637 min
 Delta R.T.: 0.002 min
 Response: 1074885
 Conc: 1.01 ng/ml

Instrument :
 ECD_O
 ClientSampleId :
 AR1254CCC500



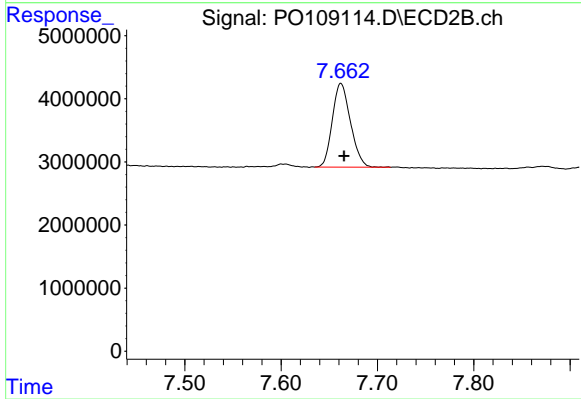
#41 AR-1268-1

R.T.: 7.601 min
 Delta R.T.: 0.000 min
 Response: 511963
 Conc: 0.81 ng/ml



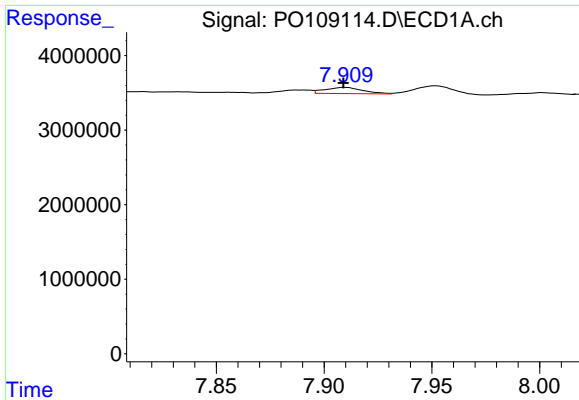
#42 AR-1268-2

R.T.: 7.696 min
 Delta R.T.: -0.003 min
 Response: 29869230
 Conc: 30.82 ng/ml



#42 AR-1268-2

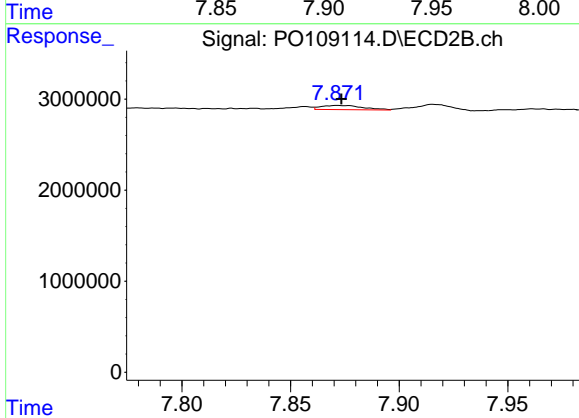
R.T.: 7.662 min
 Delta R.T.: -0.003 min
 Response: 17360780
 Conc: 30.40 ng/ml



#43 AR-1268-3

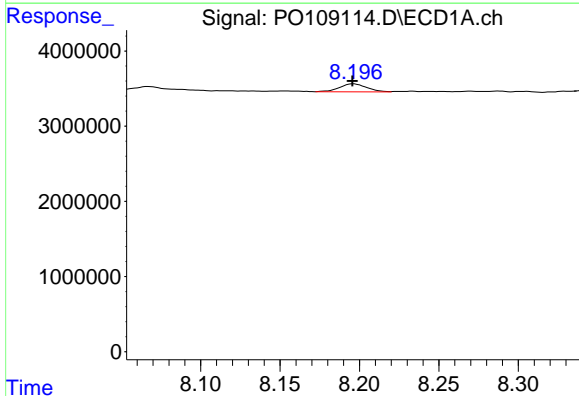
R.T.: 7.910 min
 Delta R.T.: 0.001 min
 Response: 1026099
 Conc: 1.27 ng/ml

Instrument :
 ECD_O
 ClientSampleId :
 AR1254CCC500



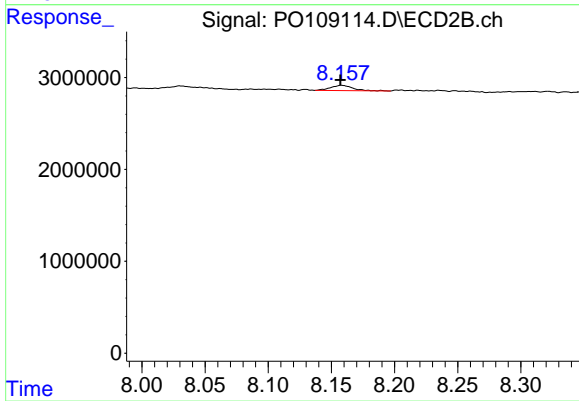
#43 AR-1268-3

R.T.: 7.872 min
 Delta R.T.: -0.002 min
 Response: 618234
 Conc: 1.34 ng/ml



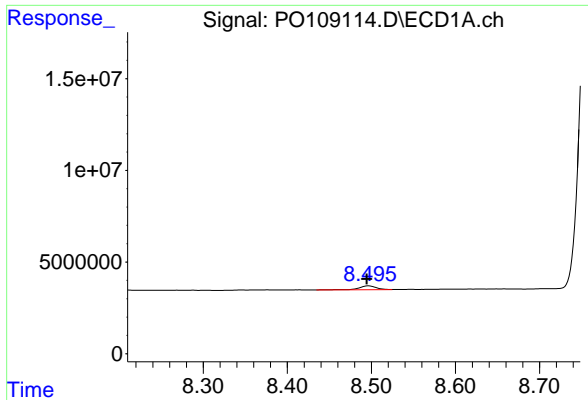
#44 AR-1268-4

R.T.: 8.196 min
 Delta R.T.: 0.000 min
 Response: 1276343
 Conc: 3.73 ng/ml



#44 AR-1268-4

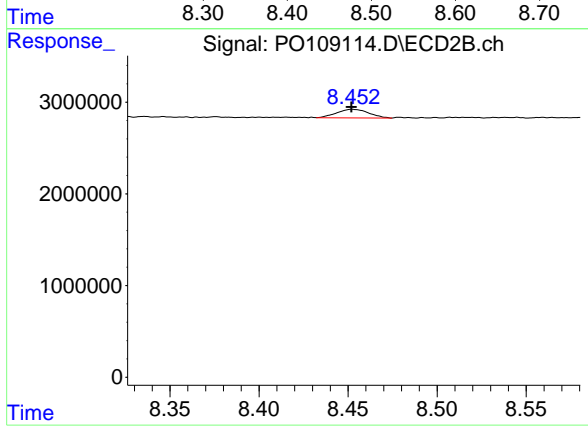
R.T.: 8.158 min
 Delta R.T.: 0.001 min
 Response: 688725
 Conc: 3.82 ng/ml



#45 AR-1268-5

R.T.: 8.496 min
 Delta R.T.: 0.002 min
 Response: 2953973
 Conc: 1.24 ng/ml

Instrument :
 ECD_O
 ClientSampleId :
 AR1254CCC500



#45 AR-1268-5

R.T.: 8.453 min
 Delta R.T.: 0.000 min
 Response: 1163830
 Conc: 0.97 ng/ml