

Data Path : Z:\pestpcbsrv\HPCHEM1\ECD_O\Data\P0012825\
 Data File : P0109176.D
 Signal(s) : Signal #1: ECD1A.ch Signal #2: ECD2B.ch
 Acq On : 28 Jan 2025 21:13
 Operator : YP/AJ
 Sample : Q1168-02
 Misc : AR1248 LOQ 50 PPB
 ALS Vial : 37 Sample Multiplier: 1

Instrument :
 ECD_O
 ClientSampleId :

Integration File signal 1: autoint1.e
 Integration File signal 2: autoint2.e
 Quant Time: Jan 28 22:25:00 2025
 Quant Method : Z:\pestpcbsrv\HPCHEM1\ECD_O\methods\P0012125.M
 Quant Title : GC EXTRACTABLES
 QLast Update : Wed Jan 22 03:46:11 2025
 Response via : Initial Calibration
 Integrator: ChemStation

Volume Inj. : 2 µl
 Signal #1 Phase : ZB-MR1 Signal #2 Phase: ZB-MR2
 Signal #1 Info : 30Mx0.32mmx 0.50µ Signal #2 Info : 30M x 0.32mm x 0.25µm

Compound	RT#1	RT#2	Resp#1	Resp#2	ng/ml	ng/ml
System Monitoring Compounds						
1) SA Tetrachlo...	3.700	3.697	138.5E6	95954686	18.333	17.901
2) SA Decachlor...	8.763	8.716	135.1E6	65287123	19.495	18.986
Target Compounds						
3) L1 AR-1016-1	4.796	4.801	7721638	5025687	30.607	31.038
4) L1 AR-1016-2	4.815	4.833	7360715	1360118	21.343	5.709 #
5) L1 AR-1016-3	4.872	4.978	4046601	3574536	16.577	27.417 #
6) L1 AR-1016-4	4.994	5.019	5067833	7897290	26.557	71.457 #
7) L1 AR-1016-5	5.250	5.232	15578428	10900061	74.623	75.936
8) L2 AR-1221-1	3.913	3.910	502772	174883	5.023	2.670 #
9) L2 AR-1221-2	4.003	3.996	2903277	2112092	39.019	42.766
10) L2 AR-1221-3	4.075	4.072	683099	534793	3.284	3.684
11) L3 AR-1232-1	4.075	4.072	683099	534793	4.137	4.630
12) L3 AR-1232-2	4.572	4.801	3182734	5025687	34.982	46.144 #
13) L3 AR-1232-3	4.815	4.978	7360715	3574536	45.961	59.608 #
14) L3 AR-1232-4	4.994	5.061	5067833	8762599	57.588	153.027 #
15) L3 AR-1232-5	5.035	5.232	10526789	10900061	162.405	179.656
16) L4 AR-1242-1	4.796	4.782	7721638	5336341	36.347	37.340
17) L4 AR-1242-2	4.815	4.801	7360715	5025687	25.672	25.483
18) L4 AR-1242-3	4.872	4.978	4046601	3574536	19.768	32.781 #
19) L4 AR-1242-4	4.994	5.061	5067833	8762599	31.899	77.106 #
20) L4 AR-1242-5	5.647	5.584	14732038	14281832	88.199	104.409
21) L5 AR-1248-1	4.796	4.782	7721638	5336341	48.390	49.724
22) L5 AR-1248-2	5.035	5.019	10526789	7897290	47.102	51.289
23) L5 AR-1248-3	5.250	5.061	15578428	8762599	56.885	52.986
24) L5 AR-1248-4	5.605	5.232	20363074	10900061	52.954	56.918
25) L5 AR-1248-5	5.647	5.625	14732038	10863791	55.453	59.296
26) L6 AR-1254-1	5.605	5.584	20363074	14281832	49.242	50.810
27) L6 AR-1254-2	5.755	5.732	6924047	6274815	19.136	25.073 #
28) L6 AR-1254-3	6.161	6.135	7972650	7267393	14.133	18.500 #
29) L6 AR-1254-4	6.391	6.363	6465199	4699746	18.760	21.328
30) L6 AR-1254-5	6.811	6.780	1821580	1144756	3.550	3.504
31) L7 AR-1260-1	6.277	6.281	1389249	3044769	3.645	12.080 #
32) L7 AR-1260-2	6.482	6.452	1497035	909947	3.188	3.025
33) L7 AR-1260-3	6.841	6.637	363827	130065	0.929	0.467 #
34) L7 AR-1260-4	7.115	7.114	1006146	741107	2.811	3.284
35) L7 AR-1260-5	7.350	7.357	1678764	397538	2.011	0.794 #
36) L8 AR-1262-1	6.854	6.812	246379	246626	0.461	0.725 #
37) L8 AR-1262-2	7.350	7.316	1678764	946529	1.826	1.707
38) L8 AR-1262-3	7.619	7.609	287571	385734	0.789	1.799 #
39) L8 AR-1262-4	7.700	7.665	951156	403969	1.383	1.031 #
40) L8 AR-1262-5	8.202	8.160	398489	35300	1.319	0.221 #
41) L9 AR-1268-1	7.619	7.609	287571	385734	0.270	0.613 #

Data Path : Z:\pestpcbsrv\HPCHEM1\ECD_0\Data\P0012825\
 Data File : P0109176.D
 Signal(s) : Signal #1: ECD1A.ch Signal #2: ECD2B.ch
 Acq On : 28 Jan 2025 21:13
 Operator : YP/AJ
 Sample : Q1168-02
 Misc : AR1248 LOQ 50 PPB
 ALS Vial : 37 Sample Multiplier: 1

Instrument :
 ECD_0
 ClientSampleId :

Integration File signal 1: autoint1.e
 Integration File signal 2: autoint2.e
 Quant Time: Jan 28 22:25:00 2025
 Quant Method : Z:\pestpcbsrv\HPCHEM1\ECD_0\methods\P0012125.M
 Quant Title : GC EXTRACTABLES
 QLast Update : Wed Jan 22 03:46:11 2025
 Response via : Initial Calibration
 Integrator: ChemStation

Volume Inj. : 2 µl
 Signal #1 Phase : ZB-MR1 Signal #2 Phase: ZB-MR2
 Signal #1 Info : 30Mx0.32mmx 0.50µ Signal #2 Info : 30M x 0.32mm x 0.25µm

	Compound	RT#1	RT#2	Resp#1	Resp#2	ng/ml	ng/ml
42)	L9 AR-1268-2	7.700	7.665	951156	403969	0.981	0.707 #
43)	L9 AR-1268-3	7.906	7.869	485163	331804	0.602	0.720
44)	L9 AR-1268-4	8.202	8.160	398489	35300	1.163	0.196 #
45)	L9 AR-1268-5	8.499	8.457	1104193	475248	0.462	0.397

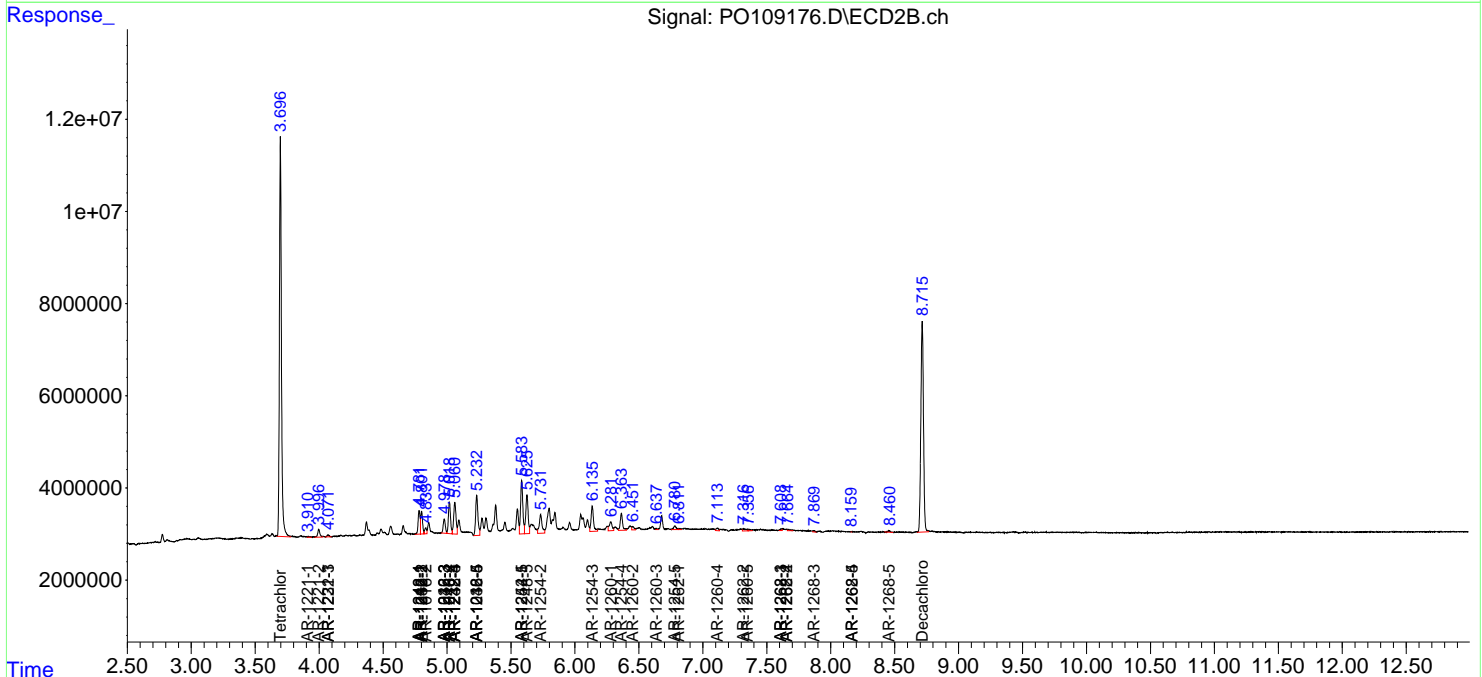
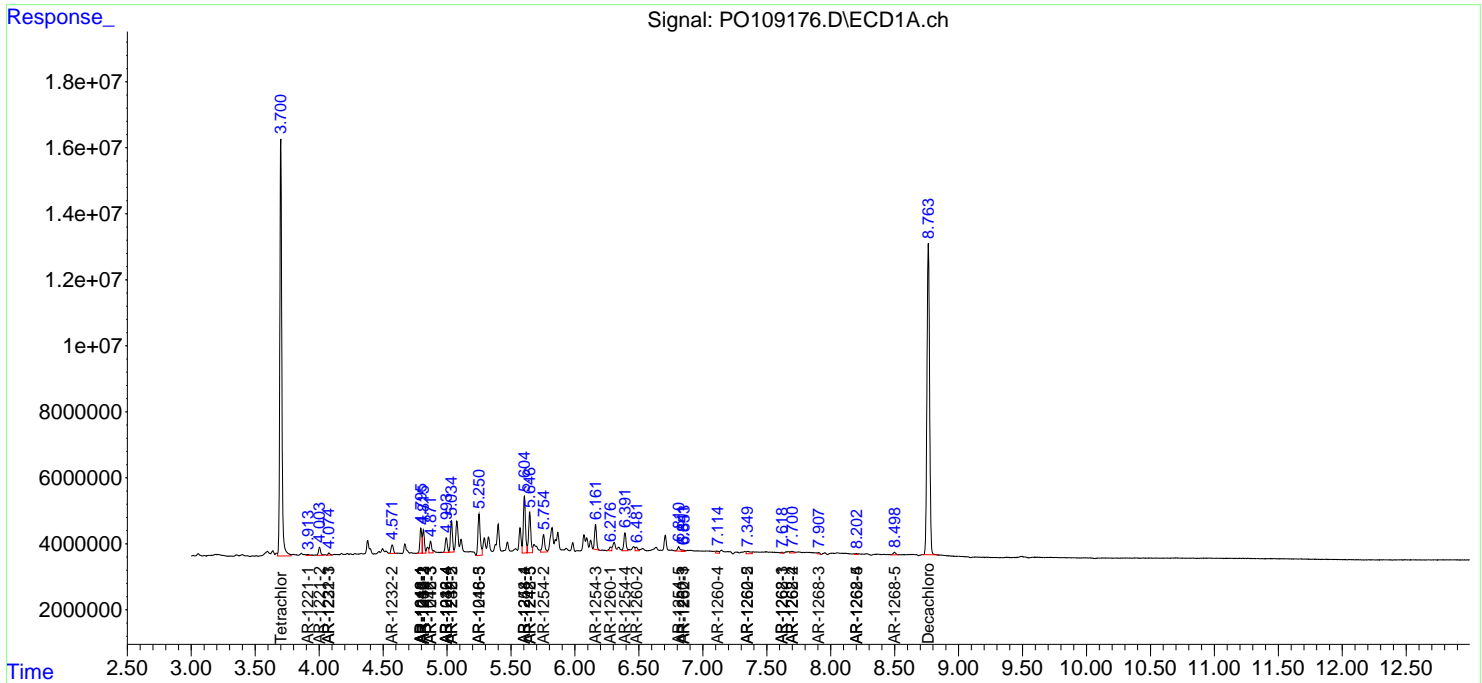
(f)=RT Delta > 1/2 Window (#)=Amounts differ by > 25% (m)=manual int.

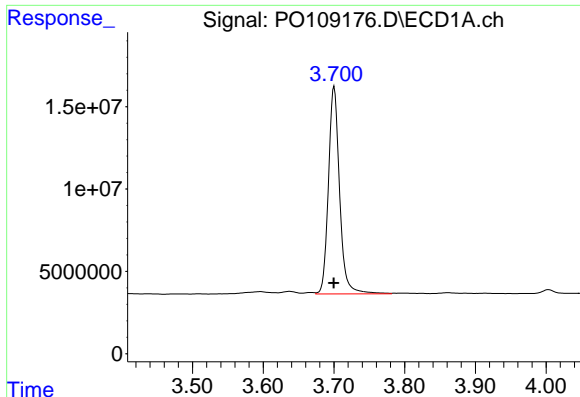
Data Path : Z:\pestpcbsrv\HPCHEM1\ECD_O\Data\PO012825\
 Data File : PO109176.D
 Signal(s) : Signal #1: ECD1A.ch Signal #2: ECD2B.ch
 Acq On : 28 Jan 2025 21:13
 Operator : YP/AJ
 Sample : Q1168-02
 Misc : AR1248 LOQ 50 PPB
 ALS Vial : 37 Sample Multiplier: 1

Instrument :
 ECD_O
 ClientSampleId :

Integration File signal 1: autoint1.e
 Integration File signal 2: autoint2.e
 Quant Time: Jan 28 22:25:00 2025
 Quant Method : Z:\pestpcbsrv\HPCHEM1\ECD_O\methods\PO012125.M
 Quant Title : GC EXTRACTABLES
 QLast Update : Wed Jan 22 03:46:11 2025
 Response via : Initial Calibration
 Integrator: ChemStation

Volume Inj. : 2 µl
 Signal #1 Phase : ZB-MR1 Signal #2 Phase: ZB-MR2
 Signal #1 Info : 30Mx0.32mmx 0.50µ Signal #2 Info : 30M x 0.32mm x 0.25µm

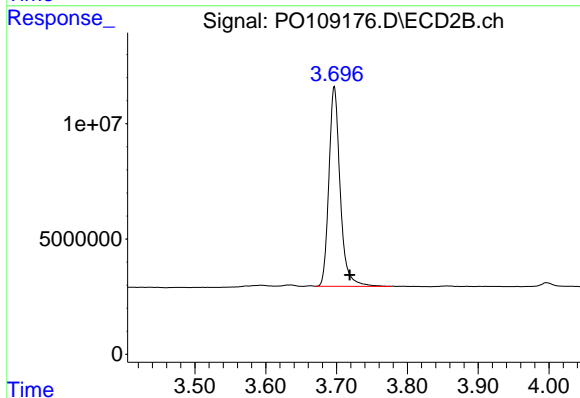




#1 Tetrachloro-m-xylene

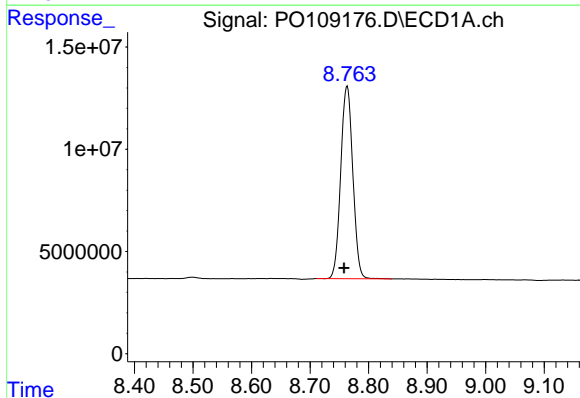
R.T.: 3.700 min
 Delta R.T.: 0.000 min
 Response: 138528239
 Conc: 18.33 ng/ml

Instrument :
 ECD_O
 ClientSampleId :



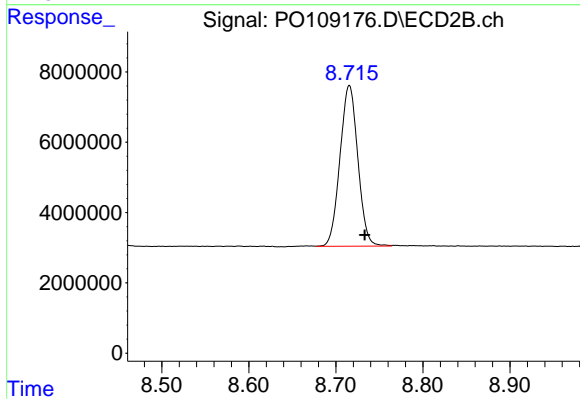
#1 Tetrachloro-m-xylene

R.T.: 3.697 min
 Delta R.T.: -0.022 min
 Response: 95954686
 Conc: 17.90 ng/ml



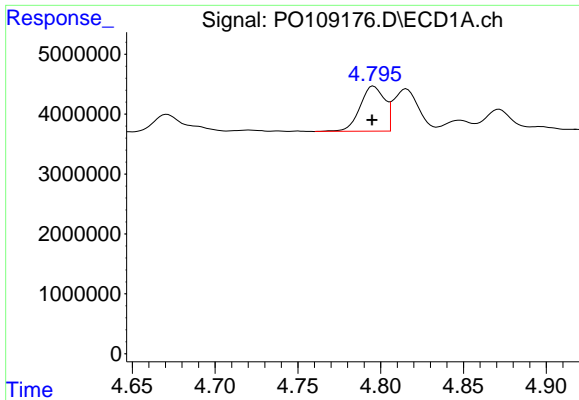
#2 Decachlorobiphenyl

R.T.: 8.763 min
 Delta R.T.: 0.005 min
 Response: 135055919
 Conc: 19.49 ng/ml



#2 Decachlorobiphenyl

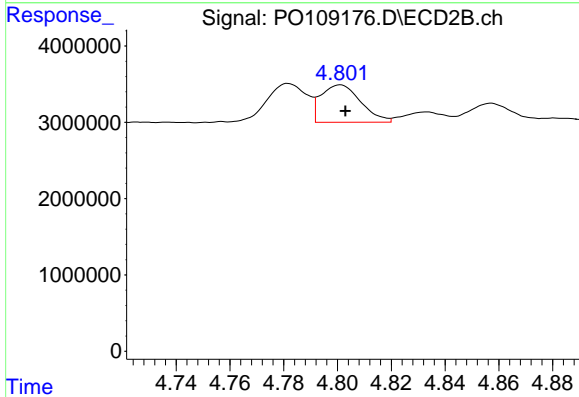
R.T.: 8.716 min
 Delta R.T.: -0.018 min
 Response: 65287123
 Conc: 18.99 ng/ml



#3 AR-1016-1

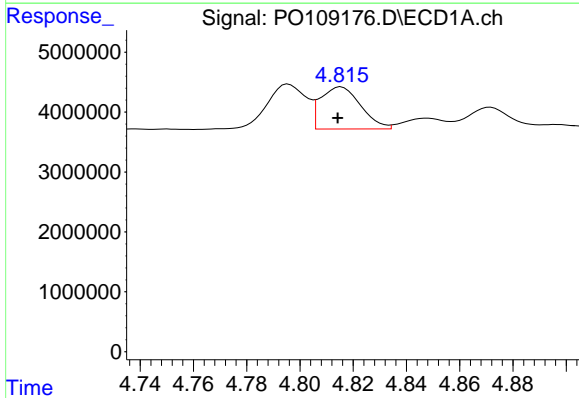
R.T.: 4.796 min
 Delta R.T.: 0.000 min
 Response: 7721638
 Conc: 30.61 ng/ml

Instrument :
 ECD_O
 ClientSampleId :



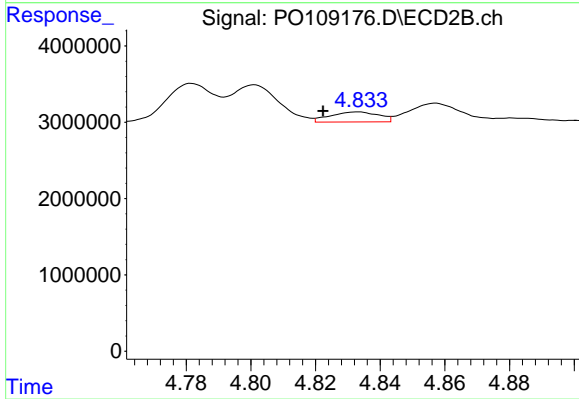
#3 AR-1016-1

R.T.: 4.801 min
 Delta R.T.: -0.002 min
 Response: 5025687
 Conc: 31.04 ng/ml



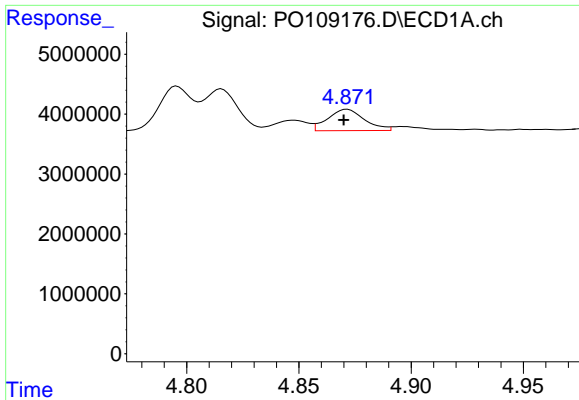
#4 AR-1016-2

R.T.: 4.815 min
 Delta R.T.: 0.001 min
 Response: 7360715
 Conc: 21.34 ng/ml



#4 AR-1016-2

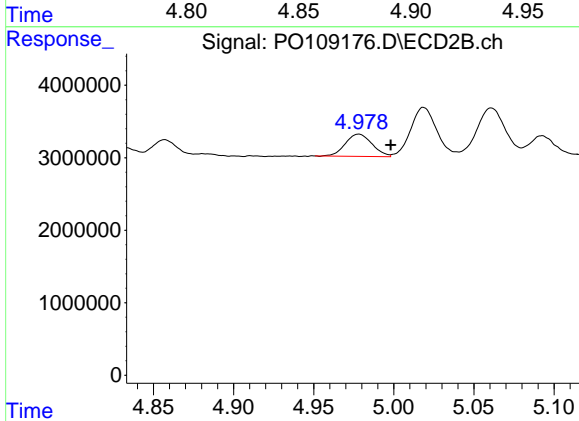
R.T.: 4.833 min
 Delta R.T.: 0.011 min
 Response: 1360118
 Conc: 5.71 ng/ml



#5 AR-1016-3

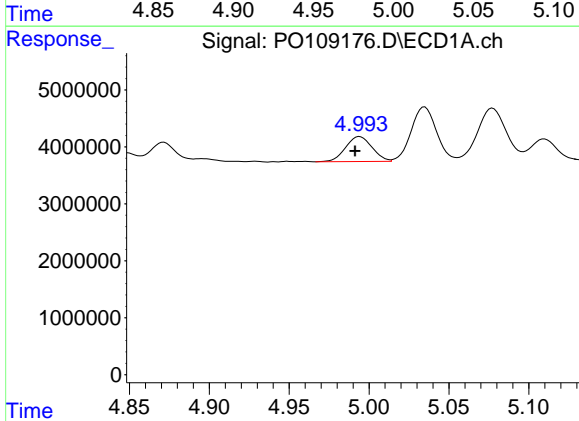
R.T.: 4.872 min
 Delta R.T.: 0.002 min
 Response: 4046601
 Conc: 16.58 ng/ml

Instrument :
 ECD_O
 ClientSampleId :



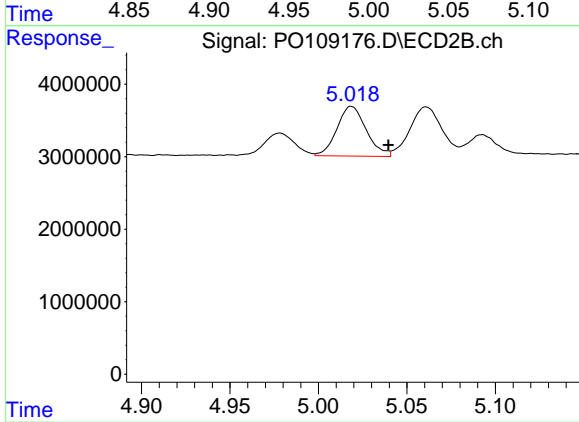
#5 AR-1016-3

R.T.: 4.978 min
 Delta R.T.: -0.020 min
 Response: 3574536
 Conc: 27.42 ng/ml



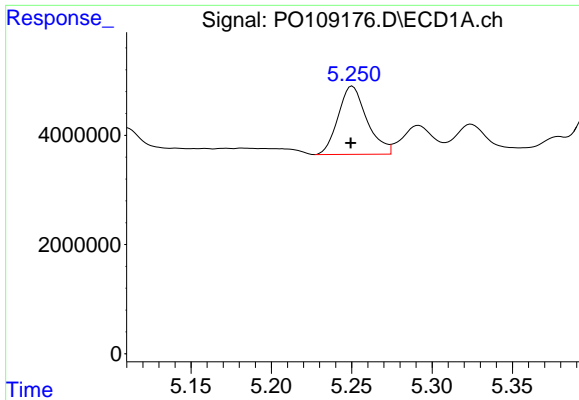
#6 AR-1016-4

R.T.: 4.994 min
 Delta R.T.: 0.003 min
 Response: 5067833
 Conc: 26.56 ng/ml



#6 AR-1016-4

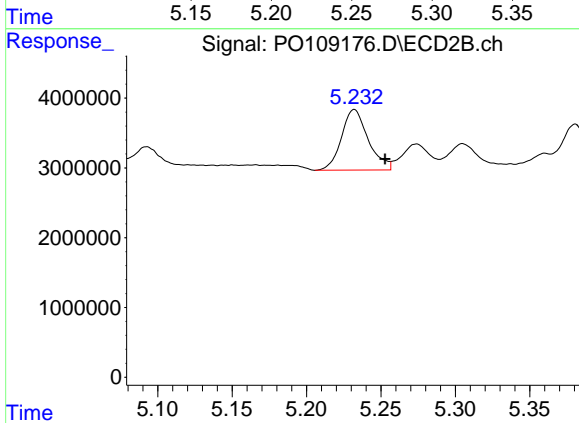
R.T.: 5.019 min
 Delta R.T.: -0.021 min
 Response: 7897290
 Conc: 71.46 ng/ml



#7 AR-1016-5

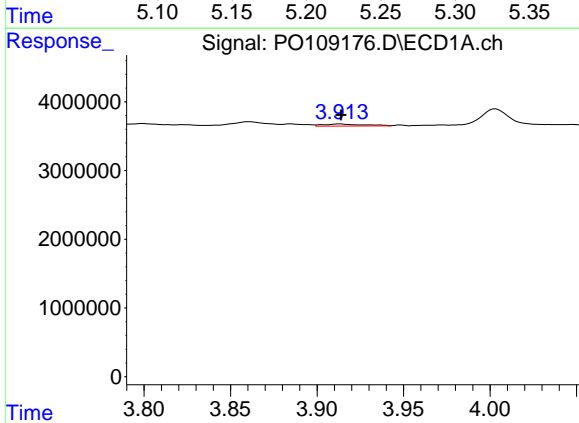
R.T.: 5.250 min
 Delta R.T.: 0.001 min
 Response: 15578428
 Conc: 74.62 ng/ml

Instrument :
 ECD_O
 ClientSampleId :



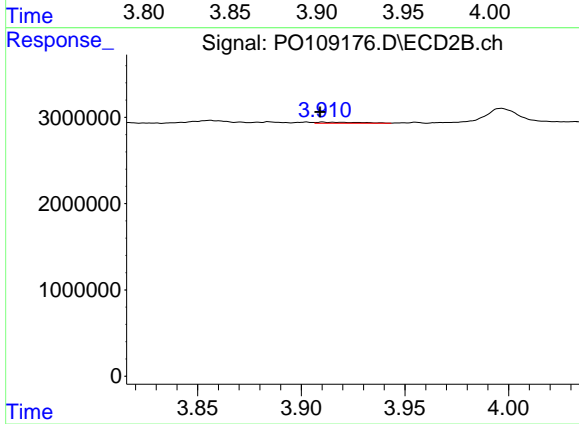
#7 AR-1016-5

R.T.: 5.232 min
 Delta R.T.: -0.021 min
 Response: 10900061
 Conc: 75.94 ng/ml



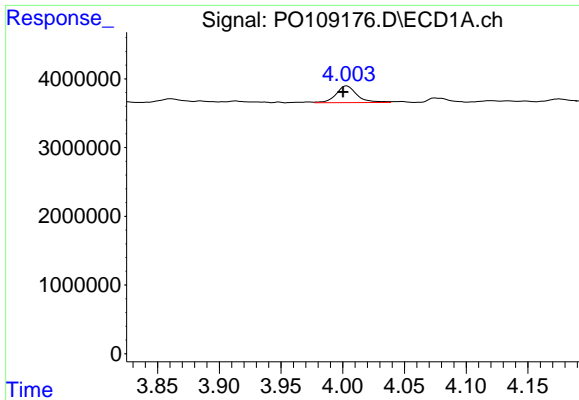
#8 AR-1221-1

R.T.: 3.913 min
 Delta R.T.: 0.000 min
 Response: 502772
 Conc: 5.02 ng/ml



#8 AR-1221-1

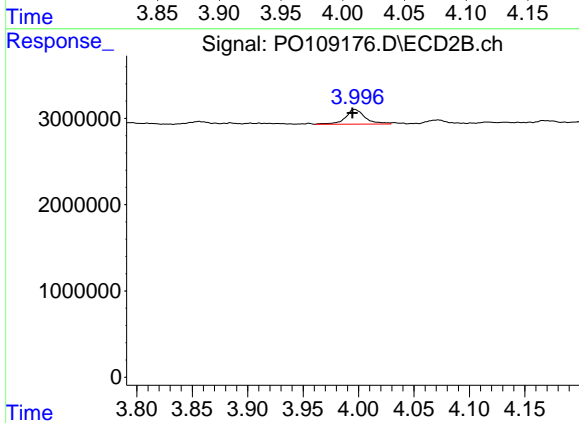
R.T.: 3.910 min
 Delta R.T.: 0.001 min
 Response: 174883
 Conc: 2.67 ng/ml



#9 AR-1221-2

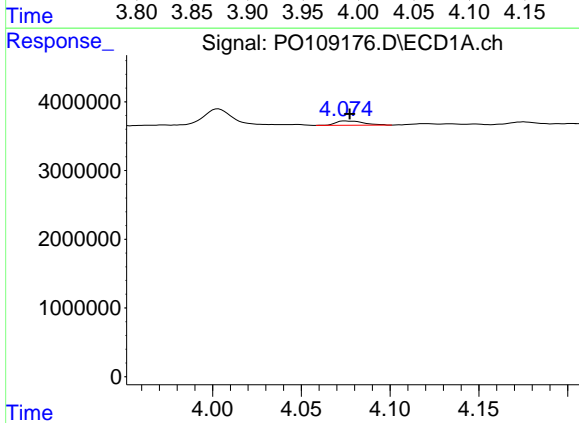
R.T.: 4.003 min
 Delta R.T.: 0.003 min
 Response: 2903277
 Conc: 39.02 ng/ml

Instrument :
 ECD_O
 ClientSampleId :



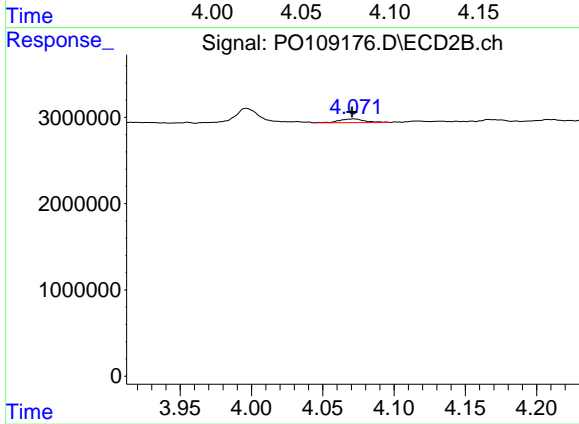
#9 AR-1221-2

R.T.: 3.996 min
 Delta R.T.: 0.002 min
 Response: 2112092
 Conc: 42.77 ng/ml



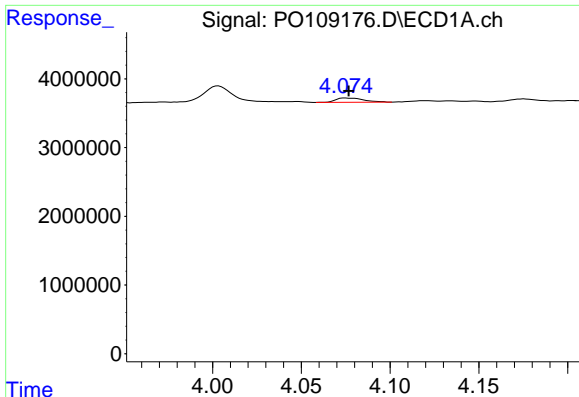
#10 AR-1221-3

R.T.: 4.075 min
 Delta R.T.: -0.002 min
 Response: 683099
 Conc: 3.28 ng/ml



#10 AR-1221-3

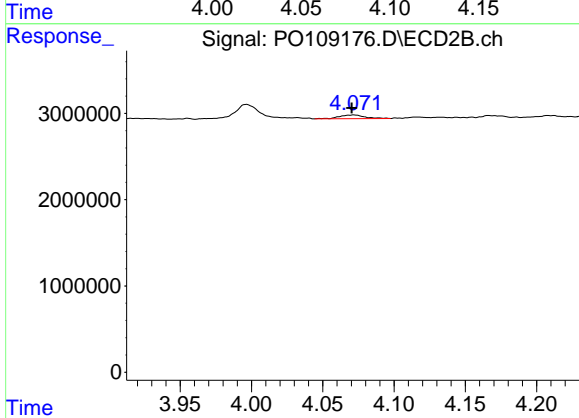
R.T.: 4.072 min
 Delta R.T.: 0.002 min
 Response: 534793
 Conc: 3.68 ng/ml



#11 AR-1232-1

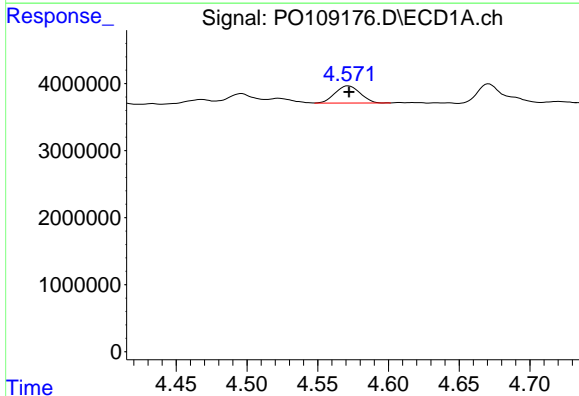
R.T.: 4.075 min
 Delta R.T.: -0.002 min
 Response: 683099
 Conc: 4.14 ng/ml

Instrument :
 ECD_O
 ClientSampleId :



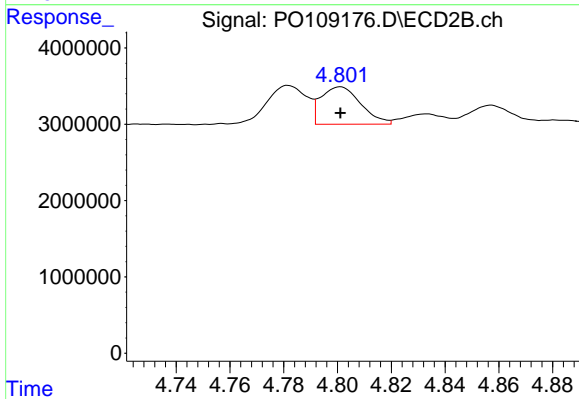
#11 AR-1232-1

R.T.: 4.072 min
 Delta R.T.: 0.002 min
 Response: 534793
 Conc: 4.63 ng/ml



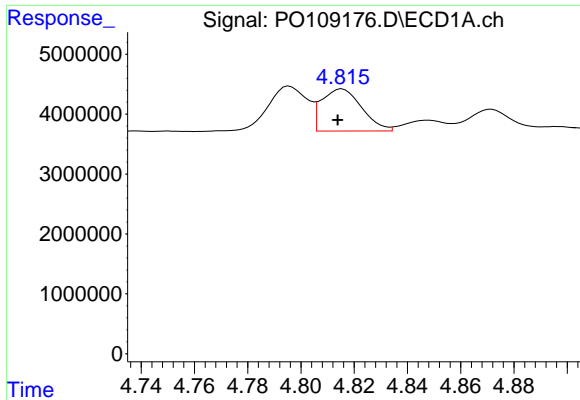
#12 AR-1232-2

R.T.: 4.572 min
 Delta R.T.: 0.000 min
 Response: 3182734
 Conc: 34.98 ng/ml



#12 AR-1232-2

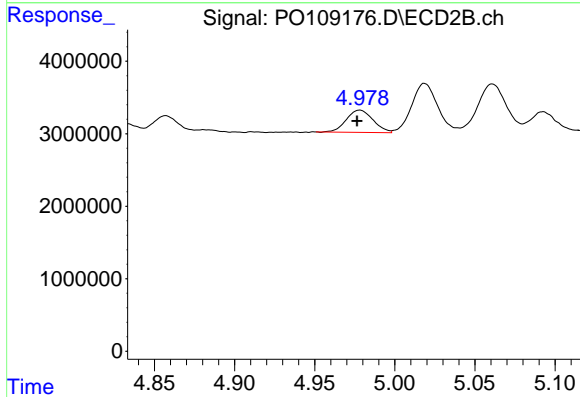
R.T.: 4.801 min
 Delta R.T.: 0.000 min
 Response: 5025687
 Conc: 46.14 ng/ml



#13 AR-1232-3

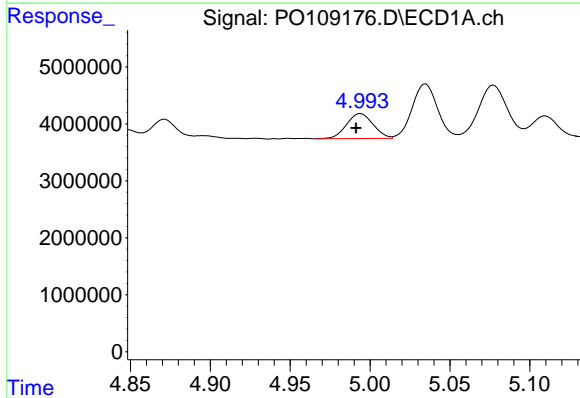
R.T.: 4.815 min
 Delta R.T.: 0.002 min
 Response: 7360715
 Conc: 45.96 ng/ml

Instrument :
 ECD_O
 ClientSampleId :



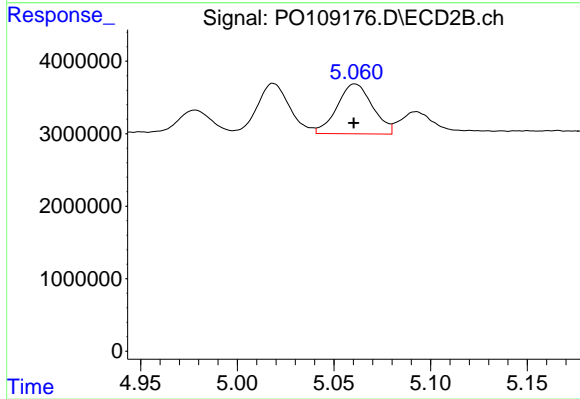
#13 AR-1232-3

R.T.: 4.978 min
 Delta R.T.: 0.002 min
 Response: 3574536
 Conc: 59.61 ng/ml



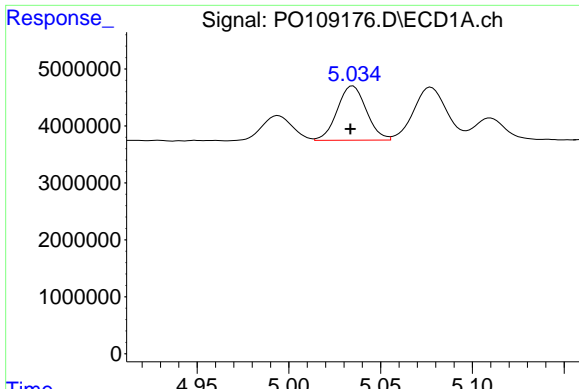
#14 AR-1232-4

R.T.: 4.994 min
 Delta R.T.: 0.003 min
 Response: 5067833
 Conc: 57.59 ng/ml



#14 AR-1232-4

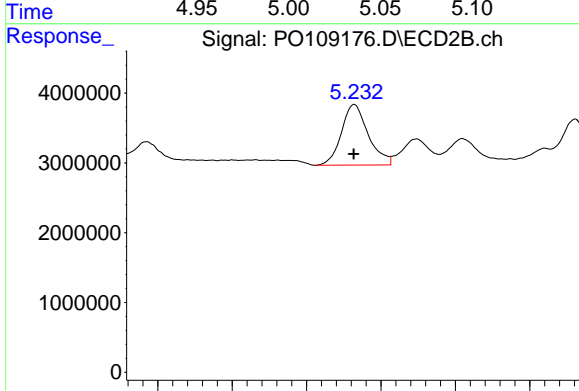
R.T.: 5.061 min
 Delta R.T.: 0.000 min
 Response: 8762599
 Conc: 153.03 ng/ml



#15 AR-1232-5

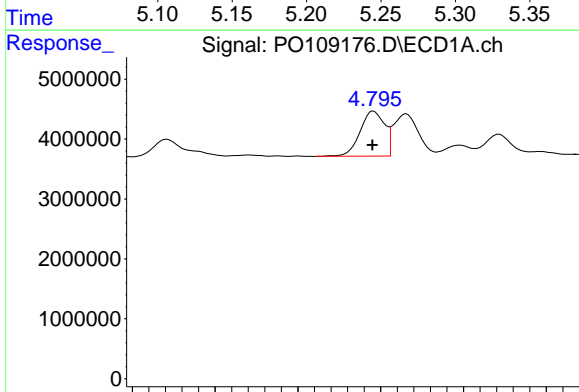
R.T.: 5.035 min
 Delta R.T.: 0.001 min
 Response: 10526789
 Conc: 162.40 ng/ml

Instrument :
 ECD_O
 ClientSampleId :



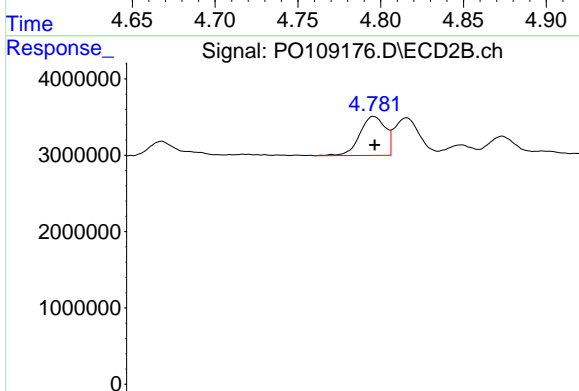
#15 AR-1232-5

R.T.: 5.232 min
 Delta R.T.: 0.000 min
 Response: 10900061
 Conc: 179.66 ng/ml



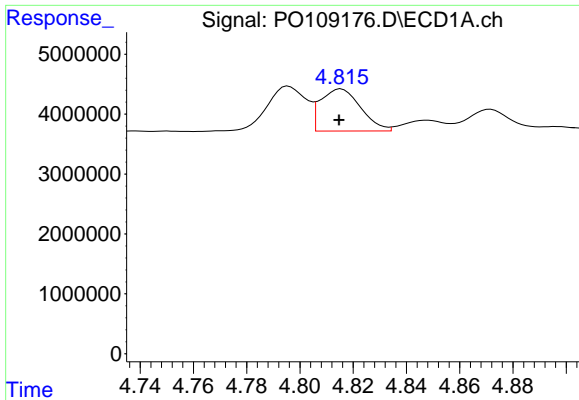
#16 AR-1242-1

R.T.: 4.796 min
 Delta R.T.: 0.000 min
 Response: 7721638
 Conc: 36.35 ng/ml



#16 AR-1242-1

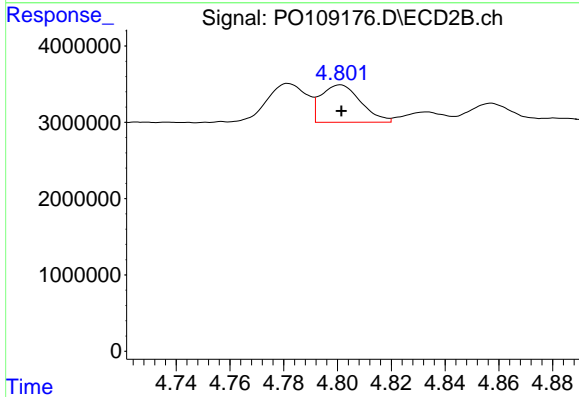
R.T.: 4.782 min
 Delta R.T.: 0.000 min
 Response: 5336341
 Conc: 37.34 ng/ml



#17 AR-1242-2

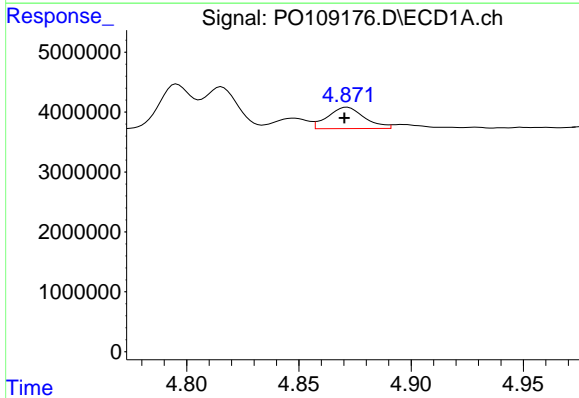
R.T.: 4.815 min
 Delta R.T.: 0.000 min
 Response: 7360715
 Conc: 25.67 ng/ml

Instrument :
 ECD_O
 ClientSampleId :



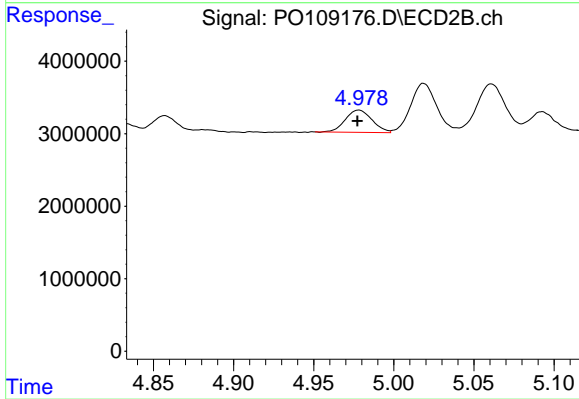
#17 AR-1242-2

R.T.: 4.801 min
 Delta R.T.: 0.000 min
 Response: 5025687
 Conc: 25.48 ng/ml



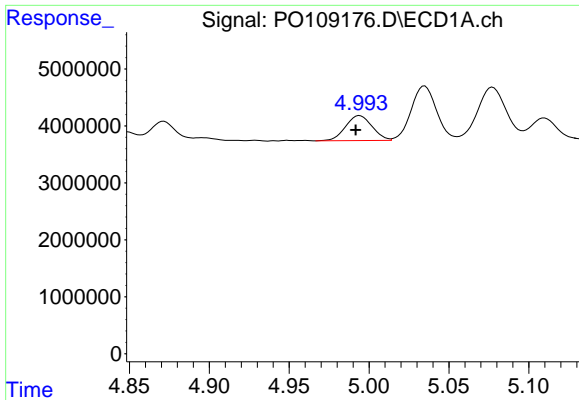
#18 AR-1242-3

R.T.: 4.872 min
 Delta R.T.: 0.001 min
 Response: 4046601
 Conc: 19.77 ng/ml



#18 AR-1242-3

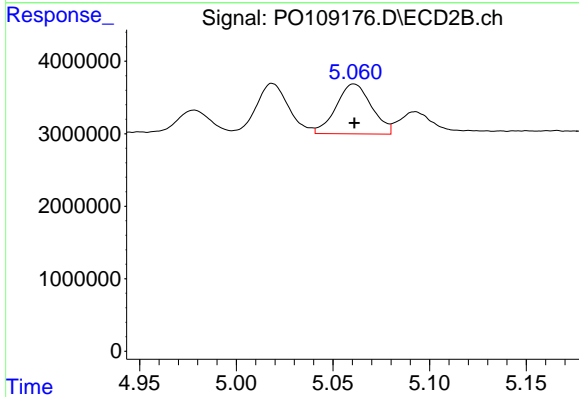
R.T.: 4.978 min
 Delta R.T.: 0.000 min
 Response: 3574536
 Conc: 32.78 ng/ml



#19 AR-1242-4

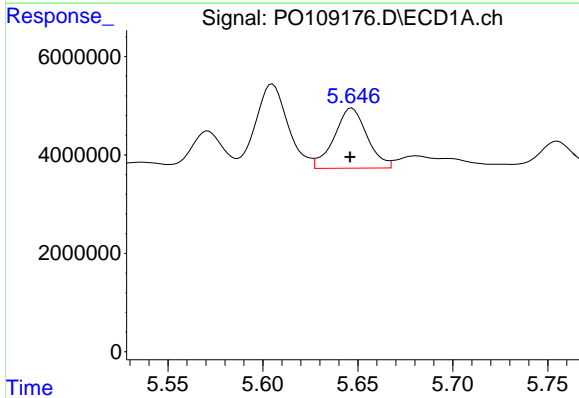
R.T.: 4.994 min
 Delta R.T.: 0.003 min
 Response: 5067833
 Conc: 31.90 ng/ml

Instrument :
 ECD_O
 ClientSampleId :



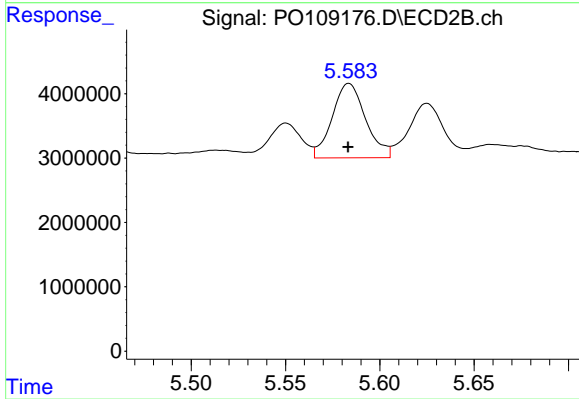
#19 AR-1242-4

R.T.: 5.061 min
 Delta R.T.: 0.000 min
 Response: 8762599
 Conc: 77.11 ng/ml



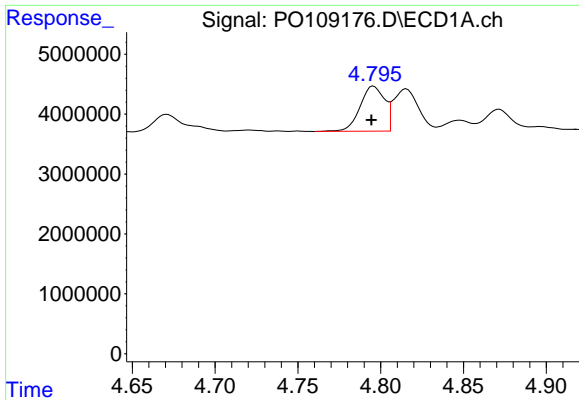
#20 AR-1242-5

R.T.: 5.647 min
 Delta R.T.: 0.000 min
 Response: 14732038
 Conc: 88.20 ng/ml



#20 AR-1242-5

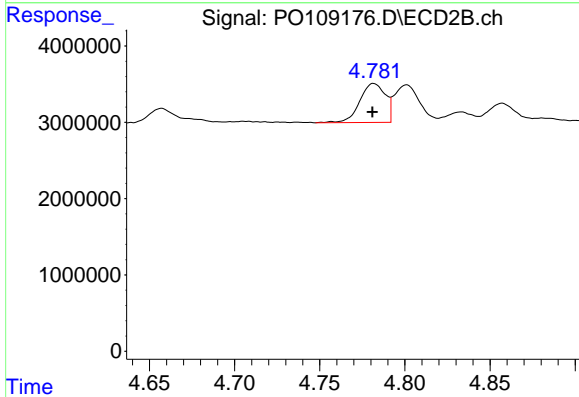
R.T.: 5.584 min
 Delta R.T.: 0.000 min
 Response: 14281832
 Conc: 104.41 ng/ml



#21 AR-1248-1

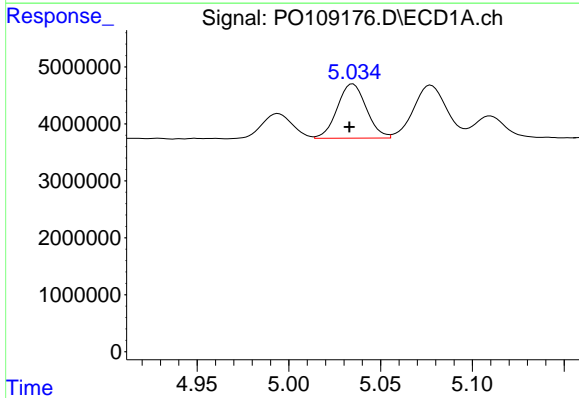
R.T.: 4.796 min
 Delta R.T.: 0.001 min
 Response: 7721638
 Conc: 48.39 ng/ml

Instrument :
 ECD_O
 ClientSampleId :



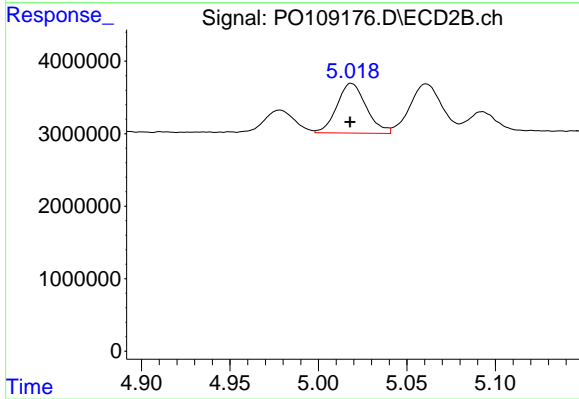
#21 AR-1248-1

R.T.: 4.782 min
 Delta R.T.: 0.000 min
 Response: 5336341
 Conc: 49.72 ng/ml



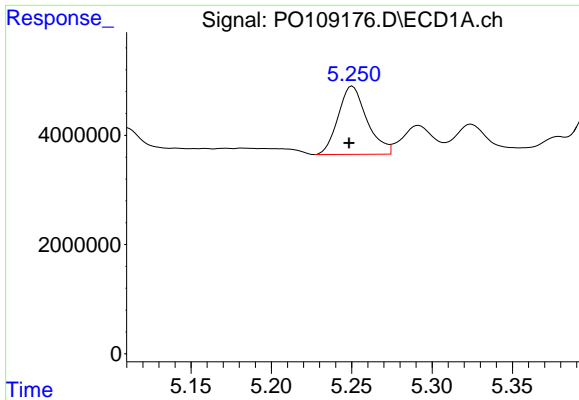
#22 AR-1248-2

R.T.: 5.035 min
 Delta R.T.: 0.002 min
 Response: 10526789
 Conc: 47.10 ng/ml



#22 AR-1248-2

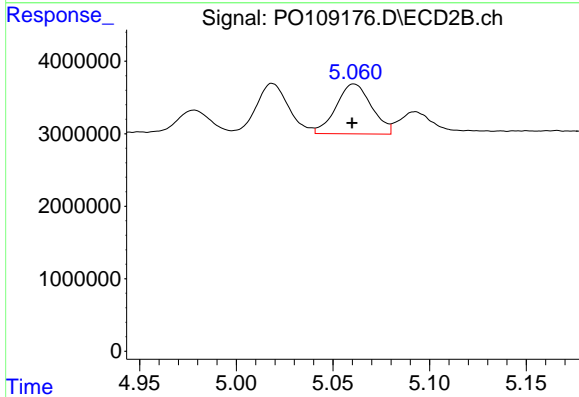
R.T.: 5.019 min
 Delta R.T.: 0.000 min
 Response: 7897290
 Conc: 51.29 ng/ml



#23 AR-1248-3

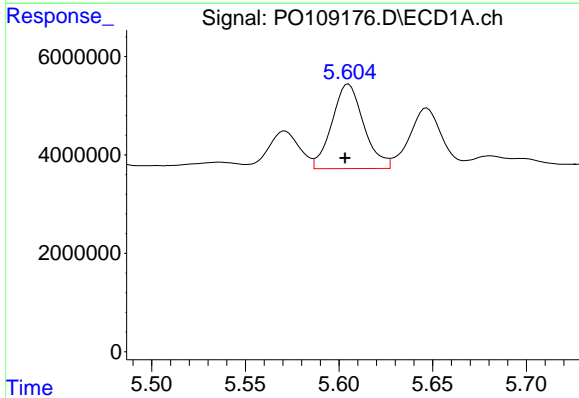
R.T.: 5.250 min
 Delta R.T.: 0.002 min
 Response: 15578428
 Conc: 56.88 ng/ml

Instrument :
 ECD_O
 ClientSampleId :



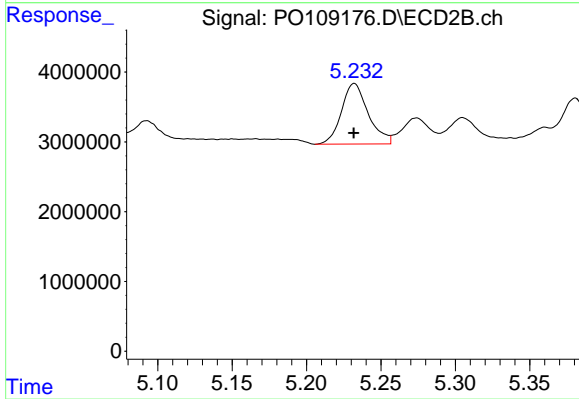
#23 AR-1248-3

R.T.: 5.061 min
 Delta R.T.: 0.001 min
 Response: 8762599
 Conc: 52.99 ng/ml



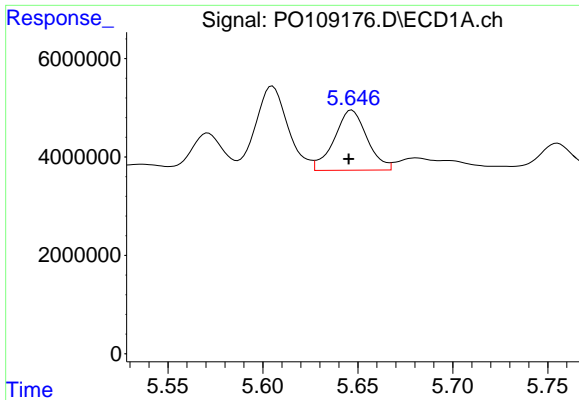
#24 AR-1248-4

R.T.: 5.605 min
 Delta R.T.: 0.002 min
 Response: 20363074
 Conc: 52.95 ng/ml



#24 AR-1248-4

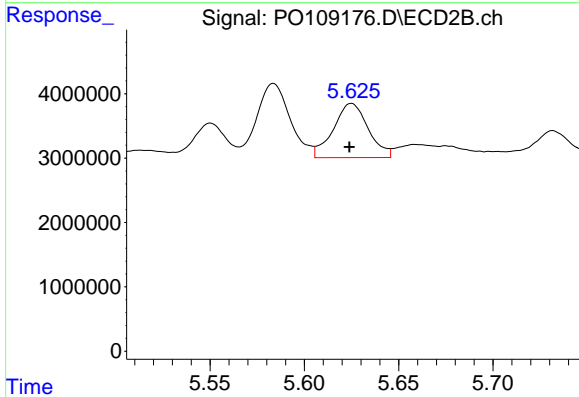
R.T.: 5.232 min
 Delta R.T.: 0.000 min
 Response: 10900061
 Conc: 56.92 ng/ml



#25 AR-1248-5

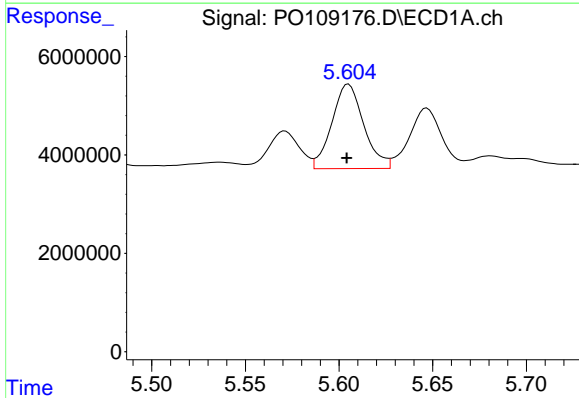
R.T.: 5.647 min
 Delta R.T.: 0.002 min
 Response: 14732038
 Conc: 55.45 ng/ml

Instrument :
 ECD_O
 ClientSampleId :



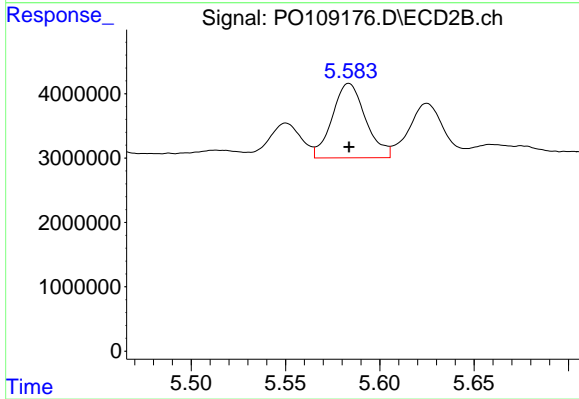
#25 AR-1248-5

R.T.: 5.625 min
 Delta R.T.: 0.001 min
 Response: 10863791
 Conc: 59.30 ng/ml



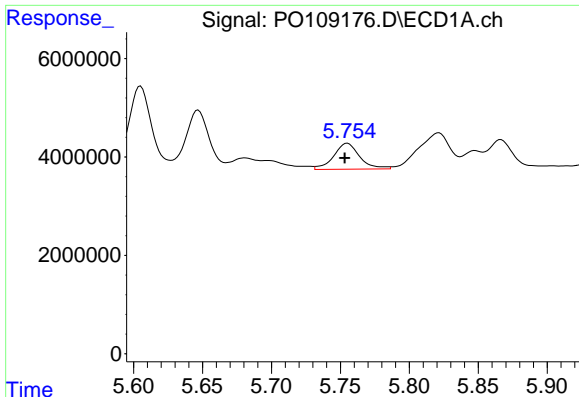
#26 AR-1254-1

R.T.: 5.605 min
 Delta R.T.: 0.001 min
 Response: 20363074
 Conc: 49.24 ng/ml



#26 AR-1254-1

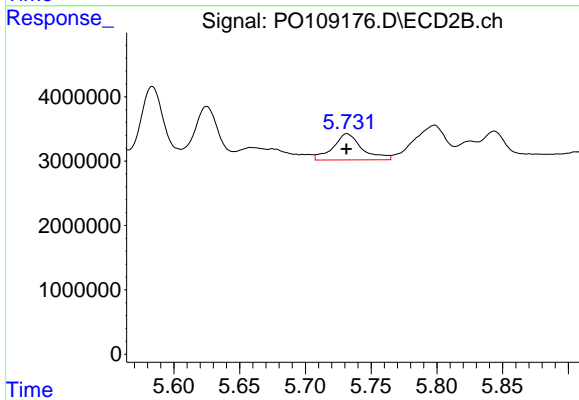
R.T.: 5.584 min
 Delta R.T.: 0.000 min
 Response: 14281832
 Conc: 50.81 ng/ml



#27 AR-1254-2

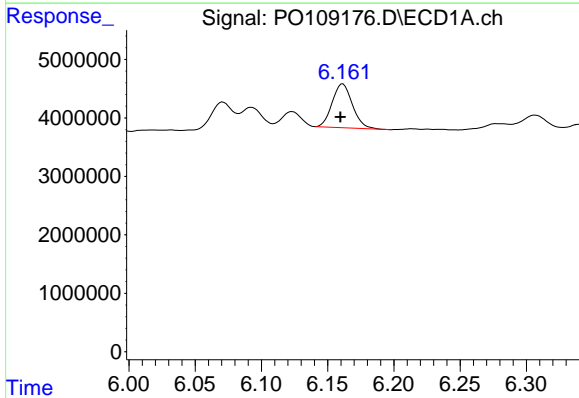
R.T.: 5.755 min
 Delta R.T.: 0.002 min
 Response: 6924047
 Conc: 19.14 ng/ml

Instrument :
 ECD_O
 ClientSampleId :



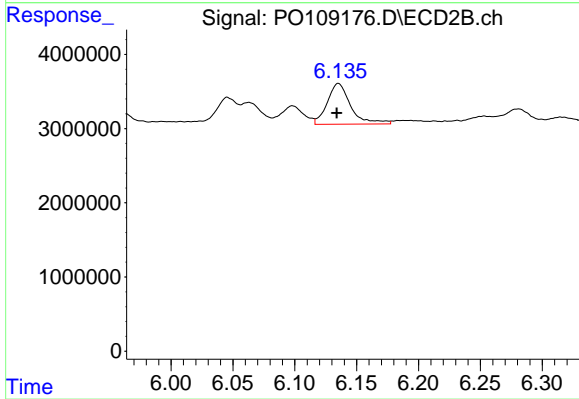
#27 AR-1254-2

R.T.: 5.732 min
 Delta R.T.: 0.000 min
 Response: 6274815
 Conc: 25.07 ng/ml



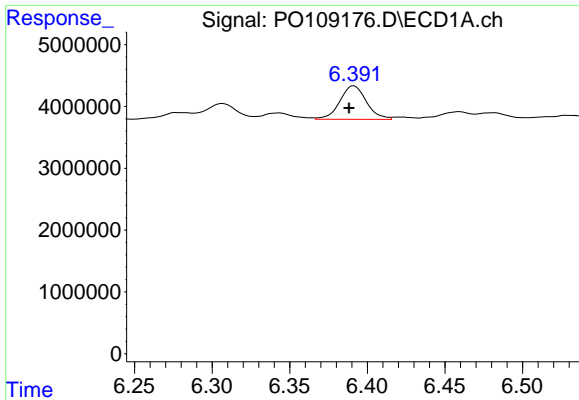
#28 AR-1254-3

R.T.: 6.161 min
 Delta R.T.: 0.002 min
 Response: 7972650
 Conc: 14.13 ng/ml



#28 AR-1254-3

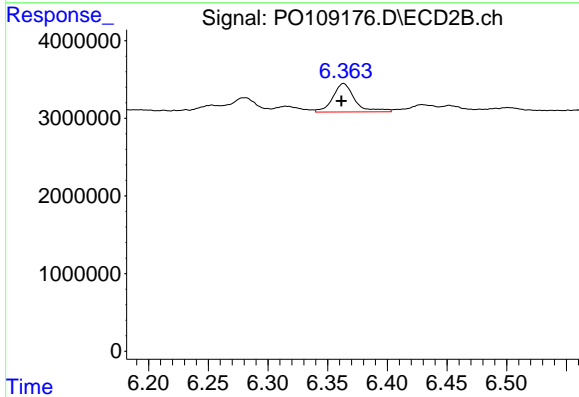
R.T.: 6.135 min
 Delta R.T.: 0.001 min
 Response: 7267393
 Conc: 18.50 ng/ml



#29 AR-1254-4

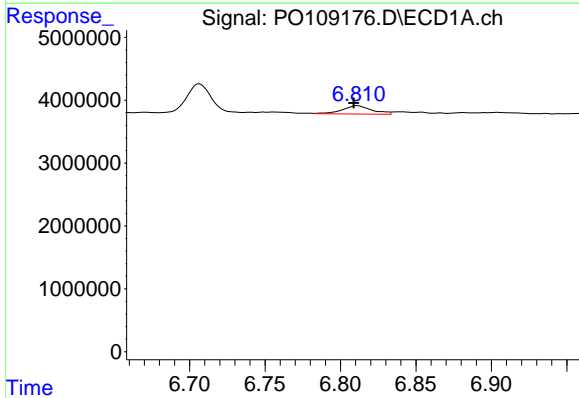
R.T.: 6.391 min
 Delta R.T.: 0.003 min
 Response: 6465199
 Conc: 18.76 ng/ml

Instrument :
 ECD_O
 ClientSampleId :



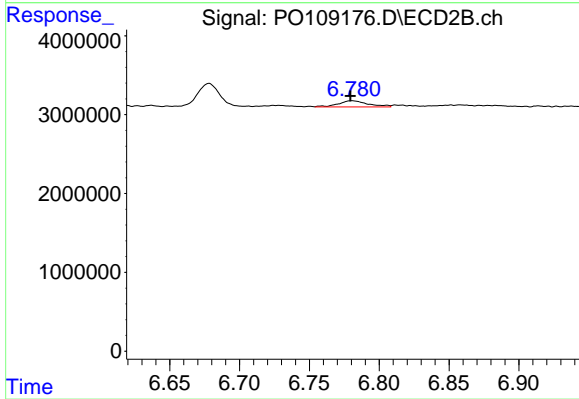
#29 AR-1254-4

R.T.: 6.363 min
 Delta R.T.: 0.002 min
 Response: 4699746
 Conc: 21.33 ng/ml



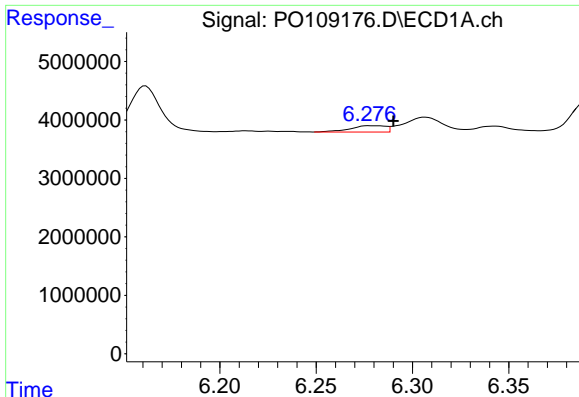
#30 AR-1254-5

R.T.: 6.811 min
 Delta R.T.: 0.002 min
 Response: 1821580
 Conc: 3.55 ng/ml



#30 AR-1254-5

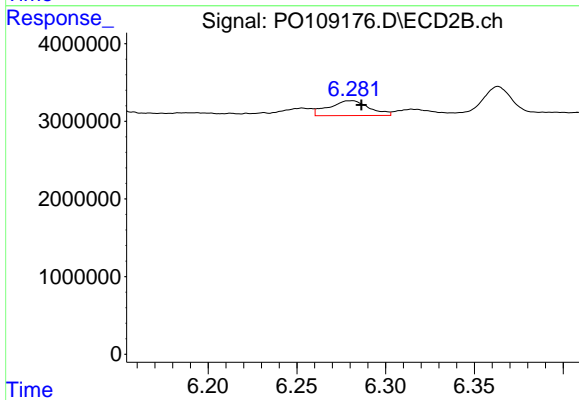
R.T.: 6.780 min
 Delta R.T.: 0.000 min
 Response: 1144756
 Conc: 3.50 ng/ml



#31 AR-1260-1

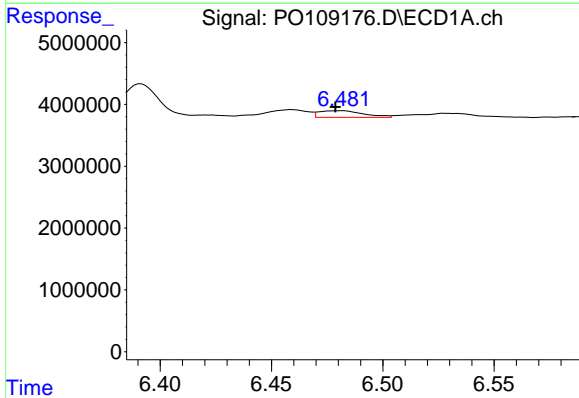
R.T.: 6.277 min
 Delta R.T.: -0.013 min
 Response: 1389249
 Conc: 3.64 ng/ml

Instrument :
 ECD_O
 ClientSampleId :



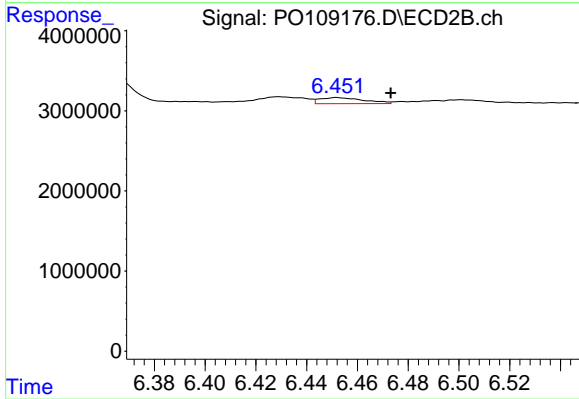
#31 AR-1260-1

R.T.: 6.281 min
 Delta R.T.: -0.006 min
 Response: 3044769
 Conc: 12.08 ng/ml



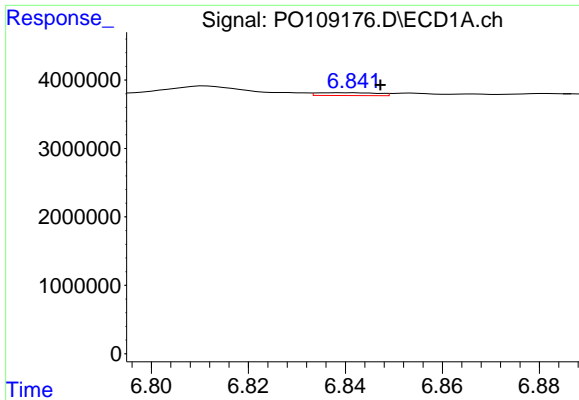
#32 AR-1260-2

R.T.: 6.482 min
 Delta R.T.: 0.003 min
 Response: 1497035
 Conc: 3.19 ng/ml



#32 AR-1260-2

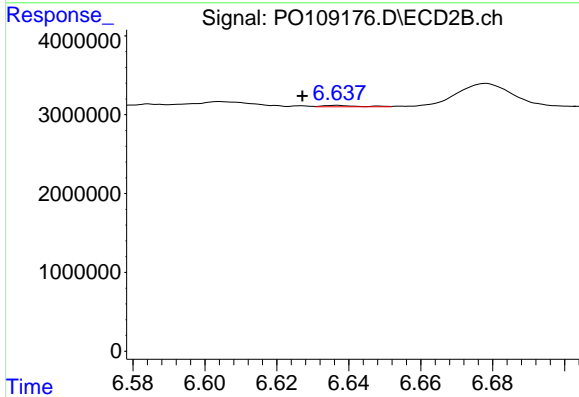
R.T.: 6.452 min
 Delta R.T.: -0.021 min
 Response: 909947
 Conc: 3.03 ng/ml



#33 AR-1260-3

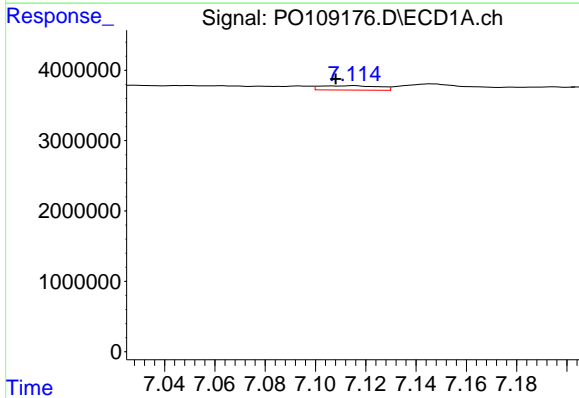
R.T.: 6.841 min
 Delta R.T.: -0.006 min
 Response: 363827
 Conc: 0.93 ng/ml

Instrument :
 ECD_O
 ClientSampleId :



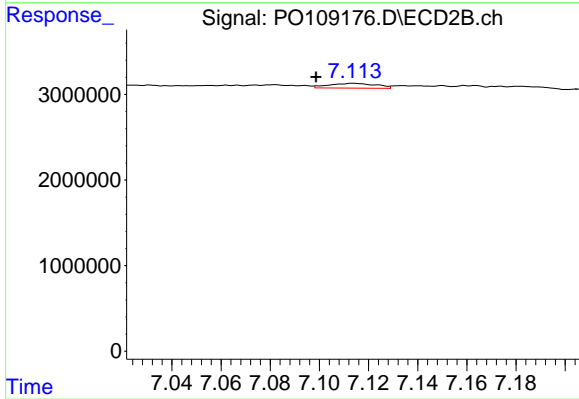
#33 AR-1260-3

R.T.: 6.637 min
 Delta R.T.: 0.010 min
 Response: 130065
 Conc: 0.47 ng/ml



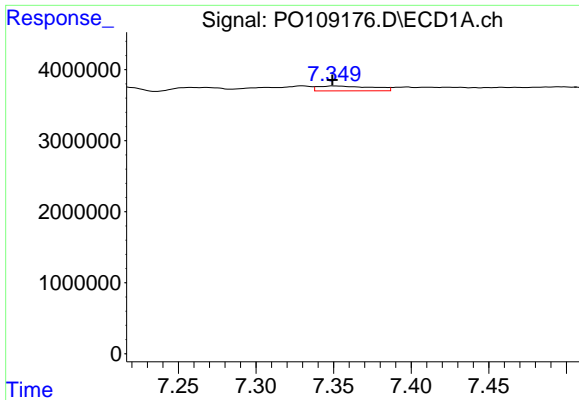
#34 AR-1260-4

R.T.: 7.115 min
 Delta R.T.: 0.007 min
 Response: 1006146
 Conc: 2.81 ng/ml



#34 AR-1260-4

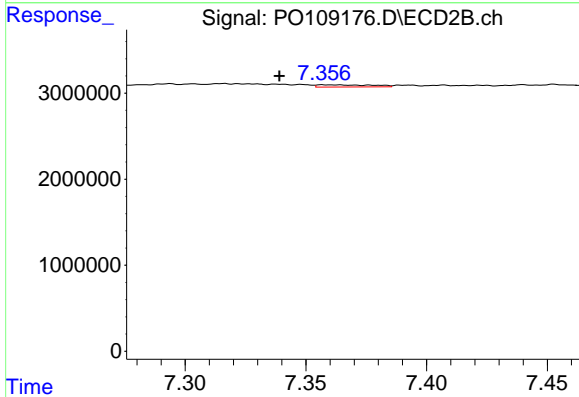
R.T.: 7.114 min
 Delta R.T.: 0.015 min
 Response: 741107
 Conc: 3.28 ng/ml



#35 AR-1260-5

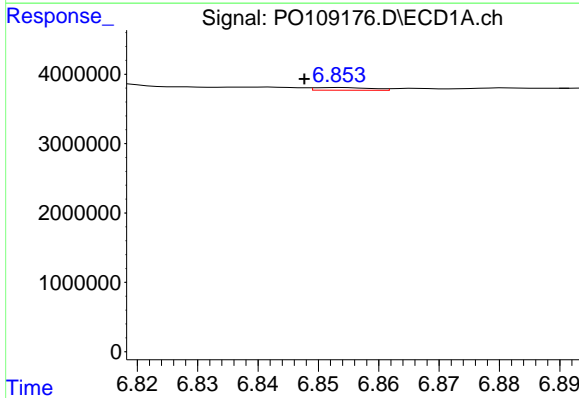
R.T.: 7.350 min
 Delta R.T.: 0.000 min
 Response: 1678764
 Conc: 2.01 ng/ml

Instrument :
 ECD_O
 ClientSampleId :



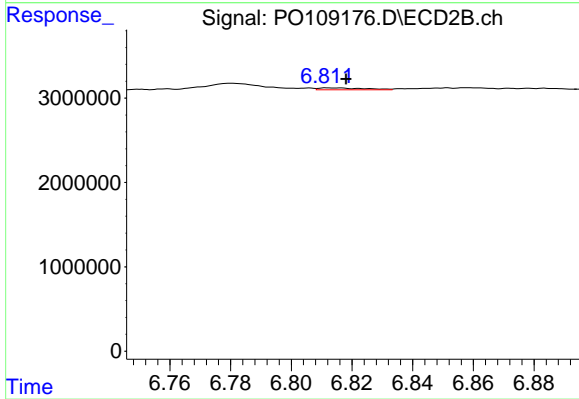
#35 AR-1260-5

R.T.: 7.357 min
 Delta R.T.: 0.018 min
 Response: 397538
 Conc: 0.79 ng/ml



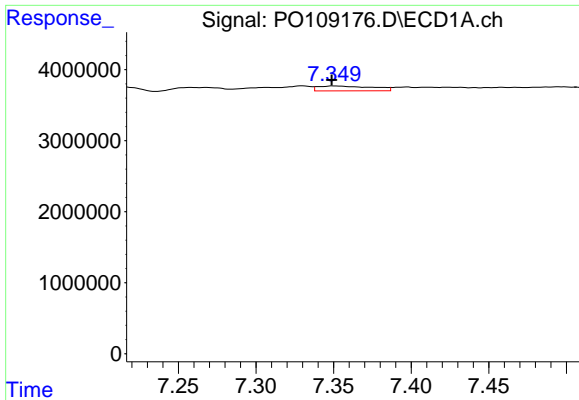
#36 AR-1262-1

R.T.: 6.854 min
 Delta R.T.: 0.006 min
 Response: 246379
 Conc: 0.46 ng/ml



#36 AR-1262-1

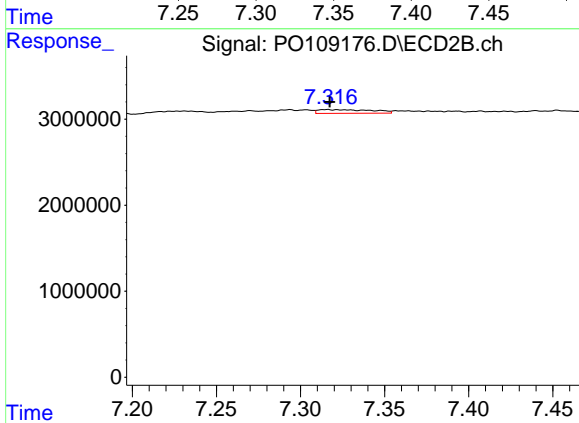
R.T.: 6.812 min
 Delta R.T.: -0.006 min
 Response: 246626
 Conc: 0.72 ng/ml



#37 AR-1262-2

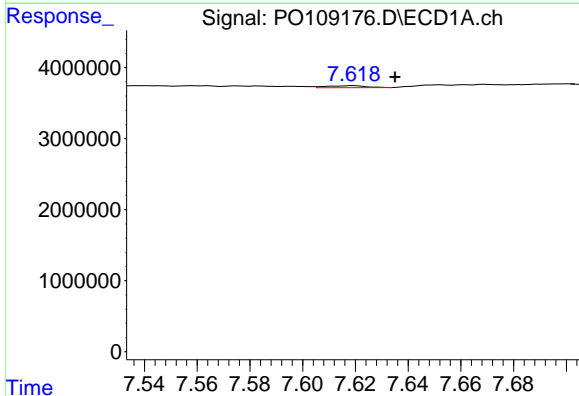
R.T.: 7.350 min
 Delta R.T.: 0.001 min
 Response: 1678764
 Conc: 1.83 ng/ml

Instrument :
 ECD_O
 ClientSampleId :



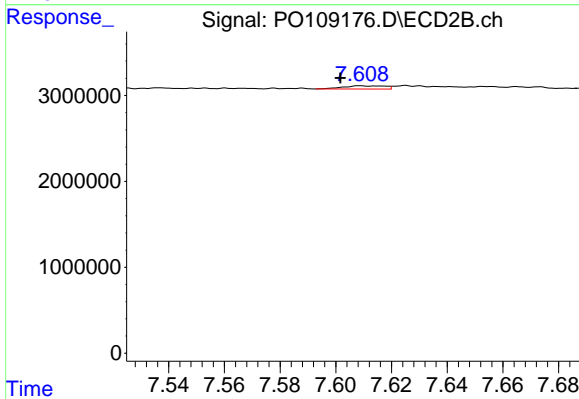
#37 AR-1262-2

R.T.: 7.316 min
 Delta R.T.: -0.001 min
 Response: 946529
 Conc: 1.71 ng/ml



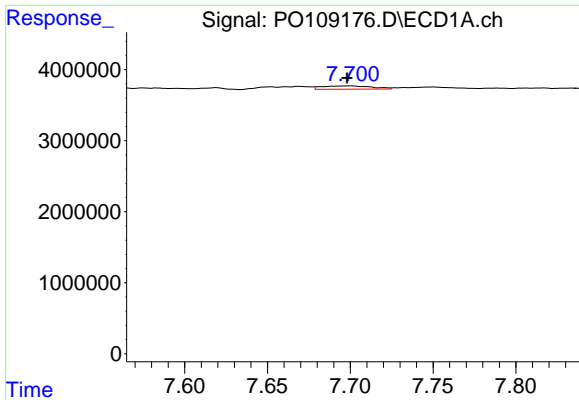
#38 AR-1262-3

R.T.: 7.619 min
 Delta R.T.: -0.016 min
 Response: 287571
 Conc: 0.79 ng/ml



#38 AR-1262-3

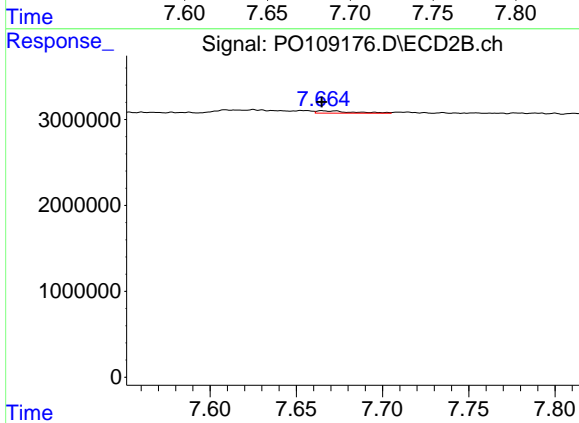
R.T.: 7.609 min
 Delta R.T.: 0.007 min
 Response: 385734
 Conc: 1.80 ng/ml



#39 AR-1262-4

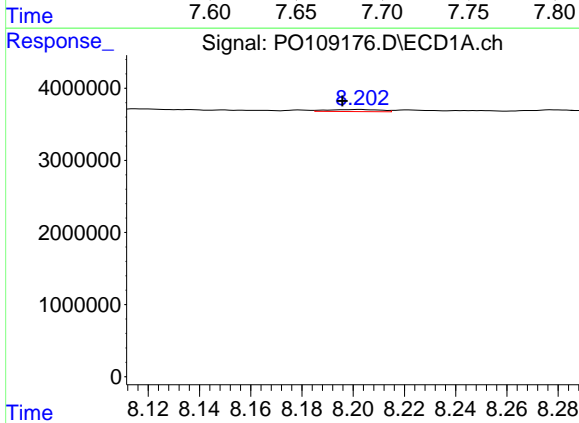
R.T.: 7.700 min
 Delta R.T.: 0.002 min
 Response: 951156
 Conc: 1.38 ng/ml

Instrument :
 ECD_O
 ClientSampleId :



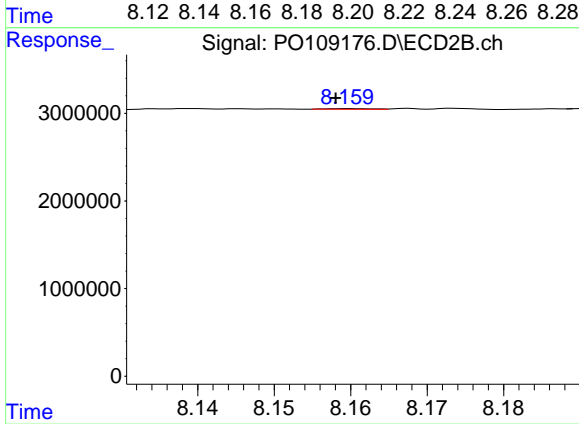
#39 AR-1262-4

R.T.: 7.665 min
 Delta R.T.: 0.000 min
 Response: 403969
 Conc: 1.03 ng/ml



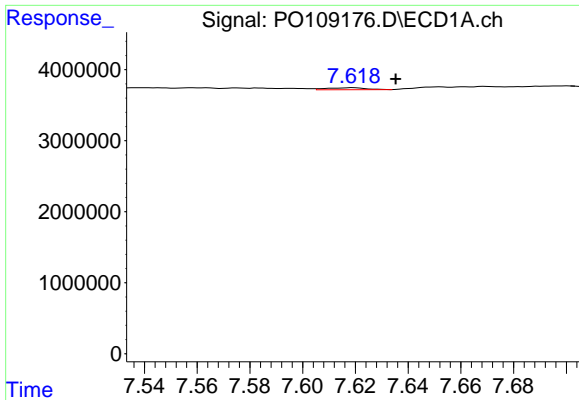
#40 AR-1262-5

R.T.: 8.202 min
 Delta R.T.: 0.007 min
 Response: 398489
 Conc: 1.32 ng/ml



#40 AR-1262-5

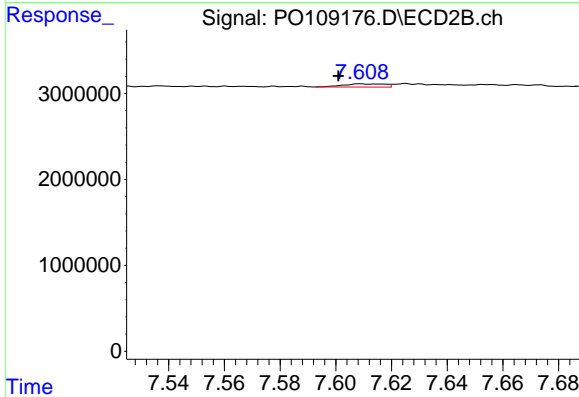
R.T.: 8.160 min
 Delta R.T.: 0.002 min
 Response: 35300
 Conc: 0.22 ng/ml



#41 AR-1268-1

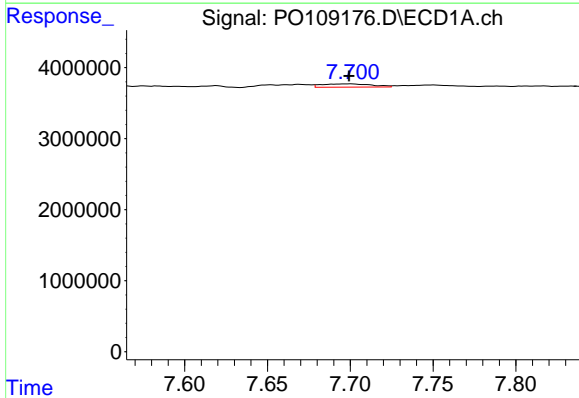
R.T.: 7.619 min
 Delta R.T.: -0.016 min
 Response: 287571
 Conc: 0.27 ng/ml

Instrument :
 ECD_O
 ClientSampleId :



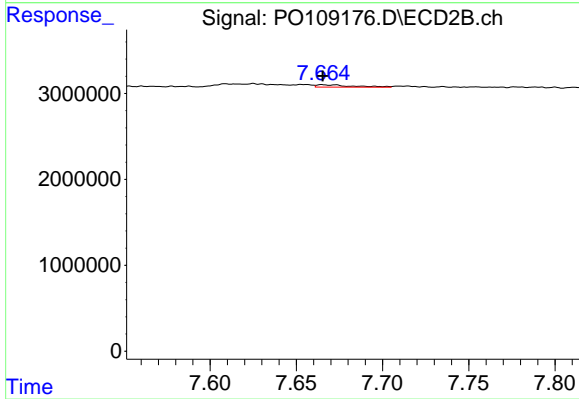
#41 AR-1268-1

R.T.: 7.609 min
 Delta R.T.: 0.008 min
 Response: 385734
 Conc: 0.61 ng/ml



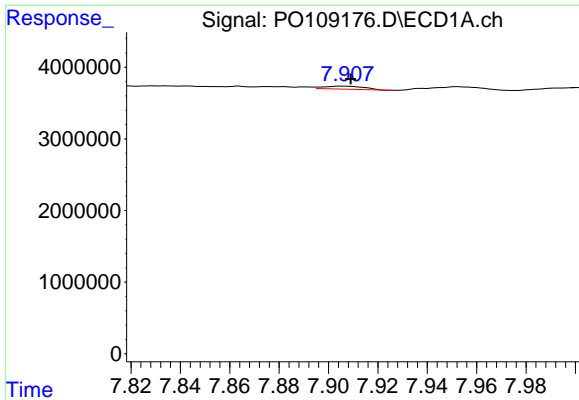
#42 AR-1268-2

R.T.: 7.700 min
 Delta R.T.: 0.000 min
 Response: 951156
 Conc: 0.98 ng/ml



#42 AR-1268-2

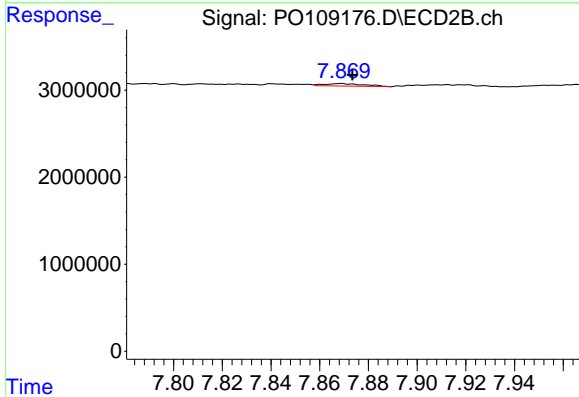
R.T.: 7.665 min
 Delta R.T.: 0.000 min
 Response: 403969
 Conc: 0.71 ng/ml



#43 AR-1268-3

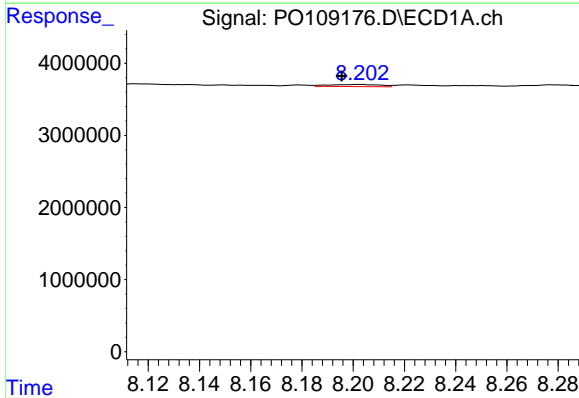
R.T.: 7.906 min
 Delta R.T.: -0.003 min
 Response: 485163
 Conc: 0.60 ng/ml

Instrument :
 ECD_O
 ClientSampleId :



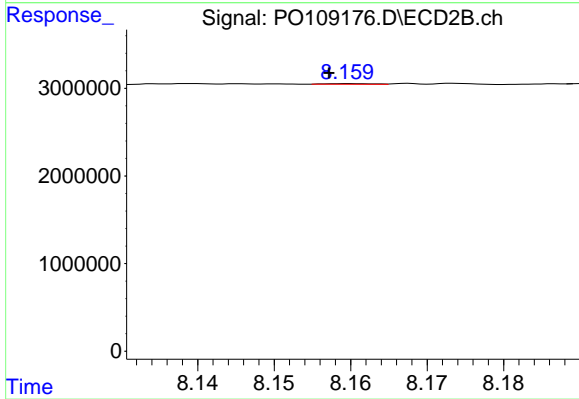
#43 AR-1268-3

R.T.: 7.869 min
 Delta R.T.: -0.005 min
 Response: 331804
 Conc: 0.72 ng/ml



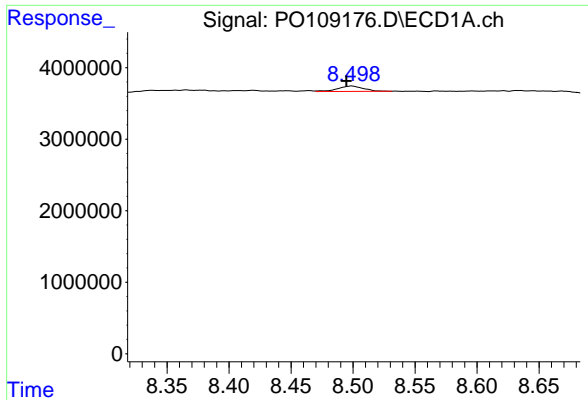
#44 AR-1268-4

R.T.: 8.202 min
 Delta R.T.: 0.007 min
 Response: 398489
 Conc: 1.16 ng/ml



#44 AR-1268-4

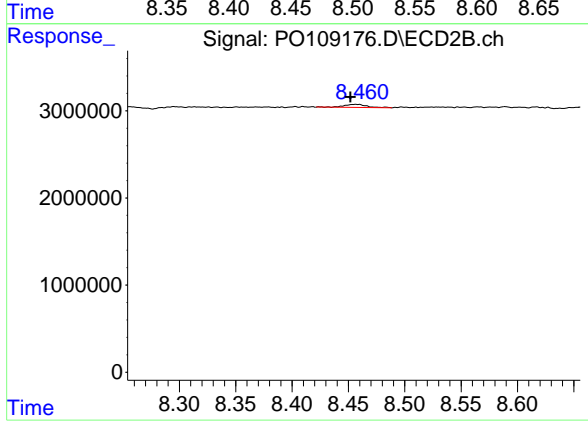
R.T.: 8.160 min
 Delta R.T.: 0.003 min
 Response: 35300
 Conc: 0.20 ng/ml



#45 AR-1268-5

R.T.: 8.499 min
Delta R.T.: 0.005 min
Response: 1104193
Conc: 0.46 ng/ml

Instrument :
ECD_O
ClientSampleId :



#45 AR-1268-5

R.T.: 8.457 min
Delta R.T.: 0.005 min
Response: 475248
Conc: 0.40 ng/ml