

Data Path : Z:\pestpcbsrv\HPCHEM1\ECD_0\Data\P0012825\
 Data File : P0109207.D
 Signal(s) : Signal #1: ECD1A.ch Signal #2: ECD2B.ch
 Acq On : 29 Jan 2025 06:42
 Operator : YP/AJ
 Sample : Q1168-03
 Misc : AR1248 MDL 25 PPB
 ALS Vial : 62 Sample Multiplier: 1

Instrument :
 ECD_0
 ClientSampleId :

Integration File signal 1: autoint1.e
 Integration File signal 2: autoint2.e
 Quant Time: Jan 29 07:48:06 2025
 Quant Method : Z:\pestpcbsrv\HPCHEM1\ECD_0\methods\P0012125.M
 Quant Title : GC EXTRACTABLES
 QLast Update : Wed Jan 22 03:46:11 2025
 Response via : Initial Calibration
 Integrator: ChemStation

Volume Inj. : 2 µl
 Signal #1 Phase : ZB-MR2 Signal #2 Phase: ZB-MR2
 Signal #1 Info : 30Mx0.32mmx 0.50µ Signal #2 Info : 30M x 0.32mm x 0.25µm

Compound	RT#1	RT#2	Resp#1	Resp#2	ng/ml	ng/ml
System Monitoring Compounds						
1) SA Tetrachlo...	3.700	3.696	156.7E6	108.6E6	20.732	20.261
2) SA Decachlor...	8.765	8.717	150.7E6	72123448	21.760	20.974
Target Compounds						
3) L1 AR-1016-1	4.795	4.800	4978987	3415840	19.735	21.096
4) L1 AR-1016-2	4.814	4.833	4919503	843653	14.264	3.541 #
5) L1 AR-1016-3	4.871	4.977	2589060	2344135	10.606	17.980 #
6) L1 AR-1016-4	4.993	5.020	3532680	5931048	18.512	53.666 #
7) L1 AR-1016-5	5.250	5.232	10257712	7173918	49.136	49.978
8) L2 AR-1221-1	3.916	3.903	161234	170116	1.611	2.598 #
9) L2 AR-1221-2	4.004	3.997	3970751	2654389	53.365	53.746
10) L2 AR-1221-3	4.077	4.069	725151	394011	3.486	2.714
11) L3 AR-1232-1	4.077	4.069	725151	394011	4.392	3.411
12) L3 AR-1232-2	4.571	4.800	2097463	3415840	23.054	31.363 #
13) L3 AR-1232-3	4.814	4.977	4919503	2344135	30.718	39.090 #
14) L3 AR-1232-4	4.993	5.061	3532680	5647994	40.143	98.634 #
15) L3 AR-1232-5	5.036	5.232	8322167	7173918	128.392	118.241
16) L4 AR-1242-1	4.795	4.782	4978987	3395887	23.437	23.762
17) L4 AR-1242-2	4.814	4.800	4919503	3415840	17.157	17.320
18) L4 AR-1242-3	4.871	4.977	2589060	2344135	12.647	21.497 #
19) L4 AR-1242-4	4.993	5.061	3532680	5647994	22.236	49.699 #
20) L4 AR-1242-5	5.647	5.583	9482335	9495200	56.770	69.416
21) L5 AR-1248-1	4.795	4.782	4978987	3395887	31.202	31.643
22) L5 AR-1248-2	5.036	5.020	8322167	5931048	37.237	38.519
23) L5 AR-1248-3	5.250	5.061	10257712	5647994	37.456	34.153
24) L5 AR-1248-4	5.605	5.232	13472138	7173918	35.034	37.461
25) L5 AR-1248-5	5.647	5.625	9482335	7015756	35.692	38.293
26) L6 AR-1254-1	5.605	5.583	13472138	9495200	32.578	33.781
27) L6 AR-1254-2	5.755	5.732	4652427	4184956	12.858	16.722 #
28) L6 AR-1254-3	6.162	6.136	5941769	5628127	10.533	14.327 #
29) L6 AR-1254-4	6.391	6.364	4897685	3092385	14.212	14.034
30) L6 AR-1254-5	6.812	6.781	1281101	674948	2.497	2.066
31) L7 AR-1260-1	6.278	6.281	777721	1883407	2.040	7.472 #
32) L7 AR-1260-2	6.481	6.453	918282	608607	1.956	2.023
33) L7 AR-1260-3	6.843	6.633	669622	36164	1.710	0.130 #
34) L7 AR-1260-4	7.108	7.083	1336515	199409	3.734	0.884 #
35) L7 AR-1260-5	7.350	7.318	1058172	789702	1.268	1.577
36) L8 AR-1262-1	6.843	6.808	669622	406127	1.254	1.193
37) L8 AR-1262-2	7.350	7.318	1058172	789702	1.151	1.424
38) L8 AR-1262-3	7.622	7.615	435169	486406	1.194	2.268 #
39) L8 AR-1262-4	7.702	7.660	1052673	450171	1.531	1.149
40) L8 AR-1262-5	8.201	8.150	394075	28111	1.304	0.176 #
41) L9 AR-1268-1	7.622	7.615	435169	486406	0.409	0.773 #

Data Path : Z:\pestpcbsrv\HPCHEM1\ECD_0\Data\P0012825\
 Data File : P0109207.D
 Signal(s) : Signal #1: ECD1A.ch Signal #2: ECD2B.ch
 Acq On : 29 Jan 2025 06:42
 Operator : YP/AJ
 Sample : Q1168-03
 Misc : AR1248 MDL 25 PPB
 ALS Vial : 62 Sample Multiplier: 1

Instrument :
 ECD_0
 ClientSampleId :

Integration File signal 1: autoint1.e
 Integration File signal 2: autoint2.e
 Quant Time: Jan 29 07:48:06 2025
 Quant Method : Z:\pestpcbsrv\HPCHEM1\ECD_0\methods\P0012125.M
 Quant Title : GC EXTRACTABLES
 QLast Update : Wed Jan 22 03:46:11 2025
 Response via : Initial Calibration
 Integrator: ChemStation

Volume Inj. : 2 µl
 Signal #1 Phase : ZB-MR1 Signal #2 Phase: ZB-MR2
 Signal #1 Info : 30Mx0.32mmx 0.50µ Signal #2 Info : 30M x 0.32mm x 0.25µm

	Compound	RT#1	RT#2	Resp#1	Resp#2	ng/ml	ng/ml
42)	L9 AR-1268-2	7.702	7.660	1052673	450171	1.086	0.788 #
43)	L9 AR-1268-3	7.911	7.871	659719	1121867	0.819	2.436 #
44)	L9 AR-1268-4	8.201	8.150	394075	28111	1.150	0.156 #
45)	L9 AR-1268-5	8.500	8.457	1495798	435483	0.625	0.364 #

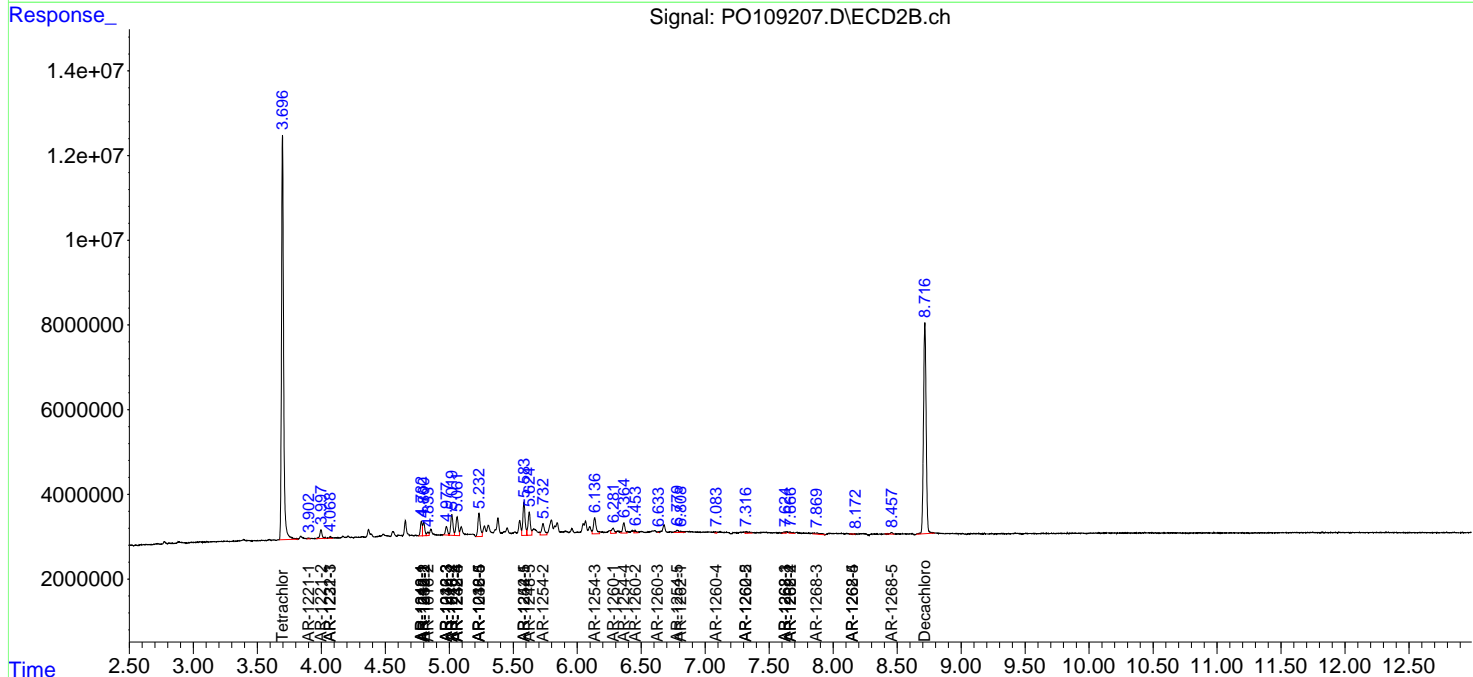
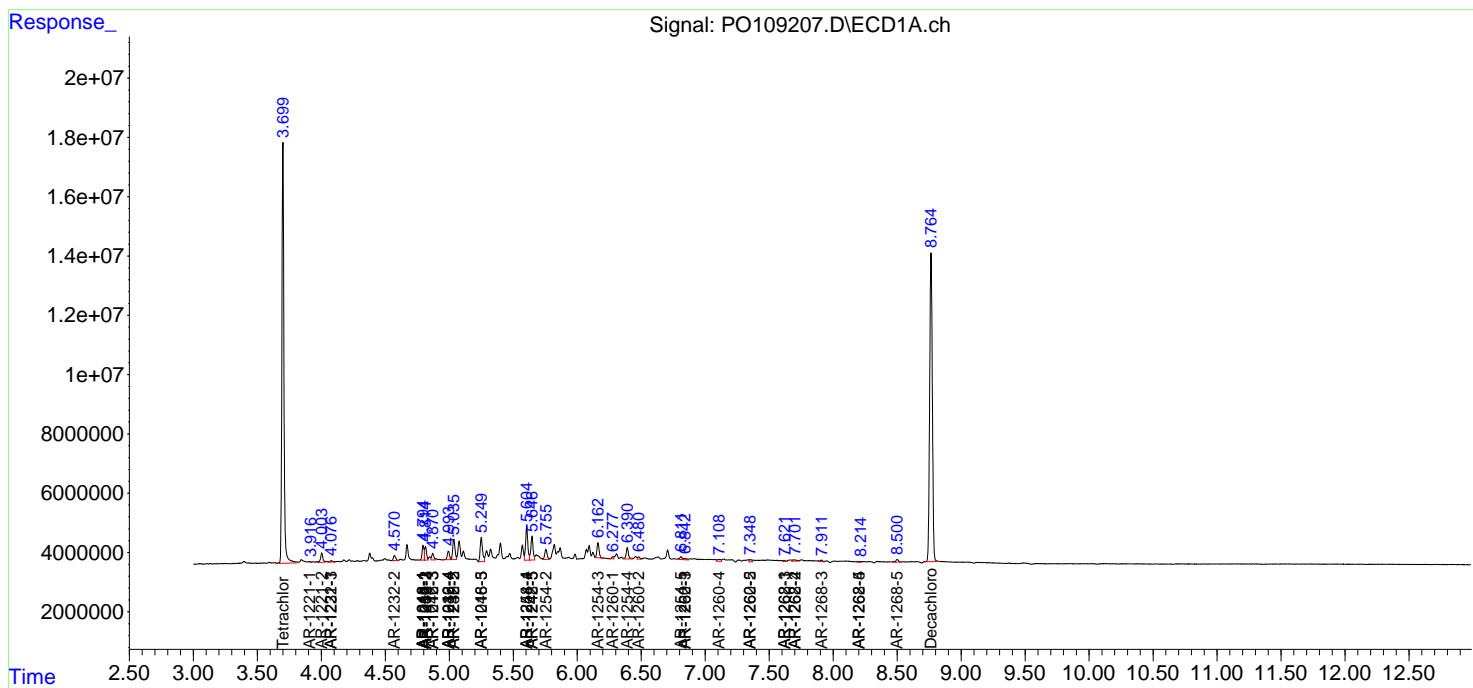
(f)=RT Delta > 1/2 Window (#)=Amounts differ by > 25% (m)=manual int.

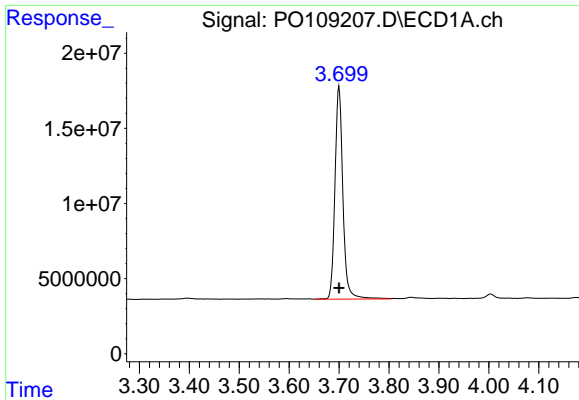
Data Path : Z:\pestpcbsrv\HPCHEM1\ECD_O\Data\PO012825\
 Data File : PO109207.D
 Signal(s) : Signal #1: ECD1A.ch Signal #2: ECD2B.ch
 Acq On : 29 Jan 2025 06:42
 Operator : YP/AJ
 Sample : Q1168-03
 Misc : AR1248 MDL 25 PPB
 ALS Vial : 62 Sample Multiplier: 1

Instrument :
 ECD_O
 ClientSampleId :

Integration File signal 1: autoint1.e
 Integration File signal 2: autoint2.e
 Quant Time: Jan 29 07:48:06 2025
 Quant Method : Z:\pestpcbsrv\HPCHEM1\ECD_O\methods\PO012125.M
 Quant Title : GC EXTRACTABLES
 QLast Update : Wed Jan 22 03:46:11 2025
 Response via : Initial Calibration
 Integrator: ChemStation

Volume Inj. : 2 µl
 Signal #1 Phase : ZB-MR1 Signal #2 Phase: ZB-MR2
 Signal #1 Info : 30Mx0.32mmx 0.50µ Signal #2 Info : 30M x 0.32mm x 0.25µm

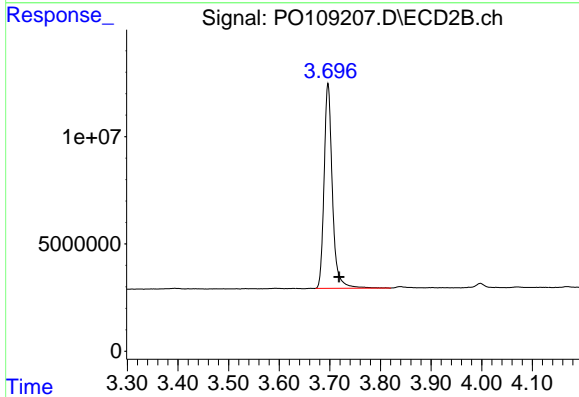




#1 Tetrachloro-m-xylene

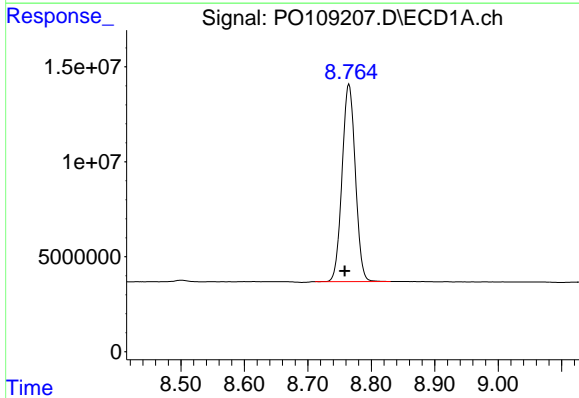
R.T.: 3.700 min
Delta R.T.: 0.000 min
Response: 156659463
Conc: 20.73 ng/ml

Instrument :
ECD_O
ClientSampleId :



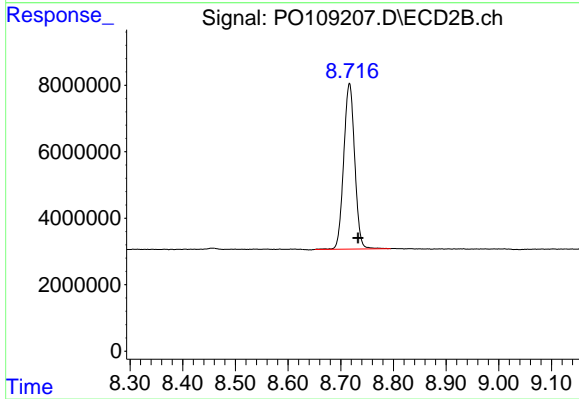
#1 Tetrachloro-m-xylene

R.T.: 3.696 min
Delta R.T.: -0.022 min
Response: 108603773
Conc: 20.26 ng/ml



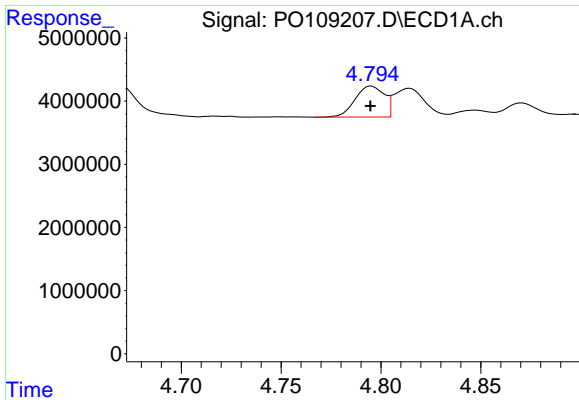
#2 Decachlorobiphenyl

R.T.: 8.765 min
Delta R.T.: 0.007 min
Response: 150749446
Conc: 21.76 ng/ml



#2 Decachlorobiphenyl

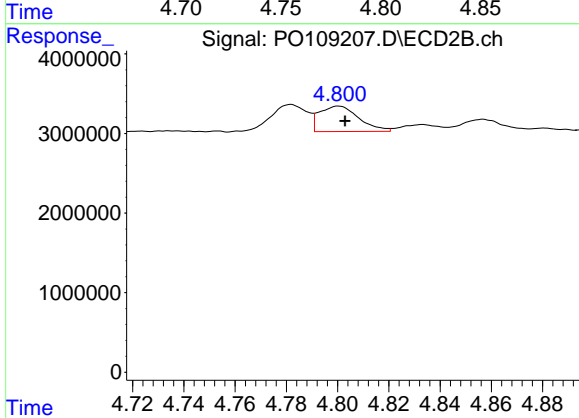
R.T.: 8.717 min
Delta R.T.: -0.016 min
Response: 72123448
Conc: 20.97 ng/ml



#3 AR-1016-1

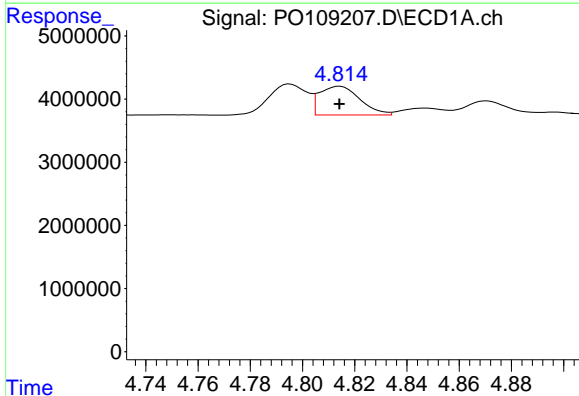
R.T.: 4.795 min
 Delta R.T.: 0.000 min
 Response: 4978987
 Conc: 19.74 ng/ml

Instrument :
 ECD_O
 ClientSampleId :



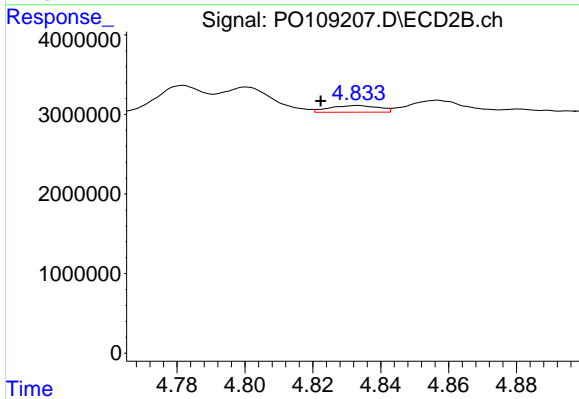
#3 AR-1016-1

R.T.: 4.800 min
 Delta R.T.: -0.003 min
 Response: 3415840
 Conc: 21.10 ng/ml



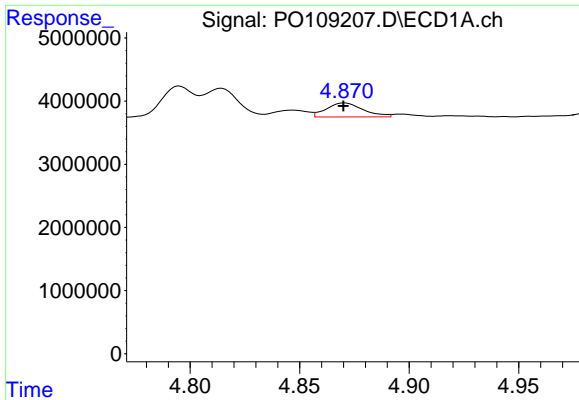
#4 AR-1016-2

R.T.: 4.814 min
 Delta R.T.: 0.000 min
 Response: 4919503
 Conc: 14.26 ng/ml



#4 AR-1016-2

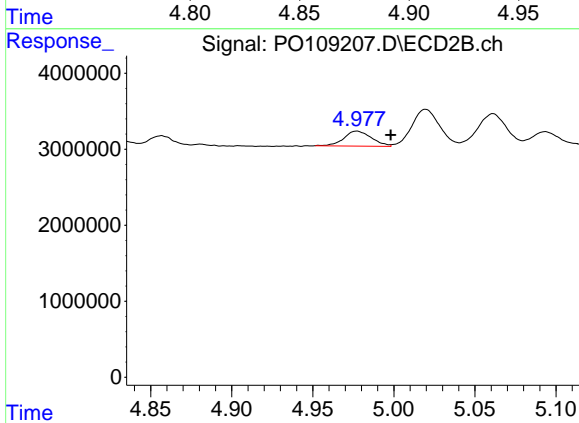
R.T.: 4.833 min
 Delta R.T.: 0.011 min
 Response: 843653
 Conc: 3.54 ng/ml



#5 AR-1016-3

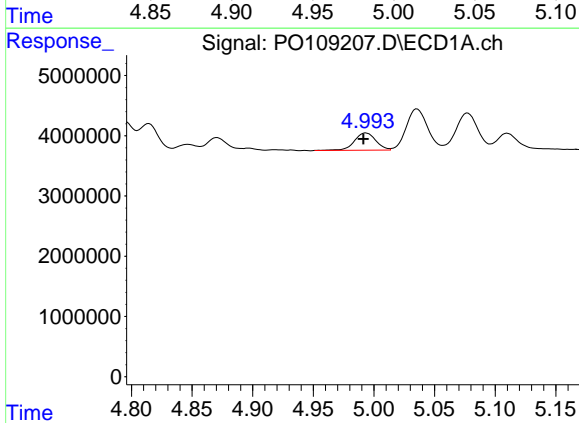
R.T.: 4.871 min
 Delta R.T.: 0.000 min
 Response: 2589060
 Conc: 10.61 ng/ml

Instrument :
 ECD_O
 ClientSampleId :



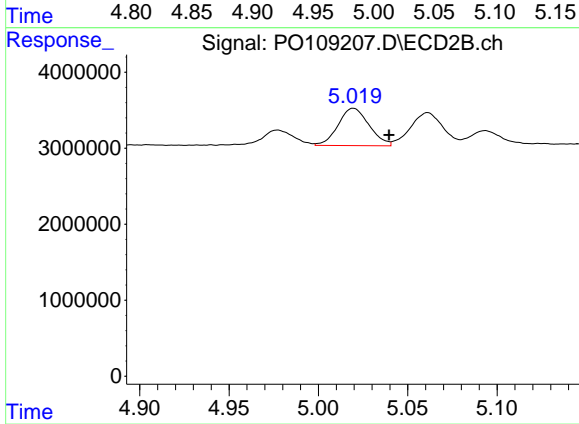
#5 AR-1016-3

R.T.: 4.977 min
 Delta R.T.: -0.021 min
 Response: 2344135
 Conc: 17.98 ng/ml



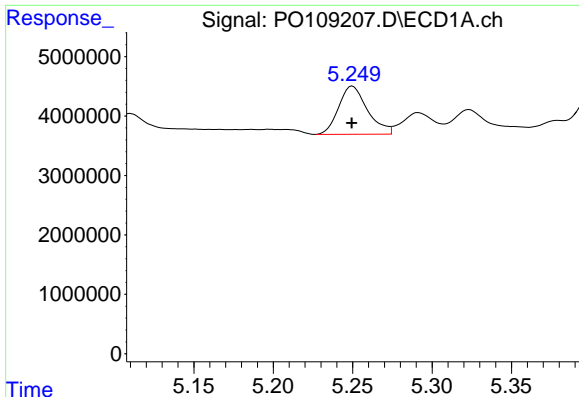
#6 AR-1016-4

R.T.: 4.993 min
 Delta R.T.: 0.002 min
 Response: 3532680
 Conc: 18.51 ng/ml



#6 AR-1016-4

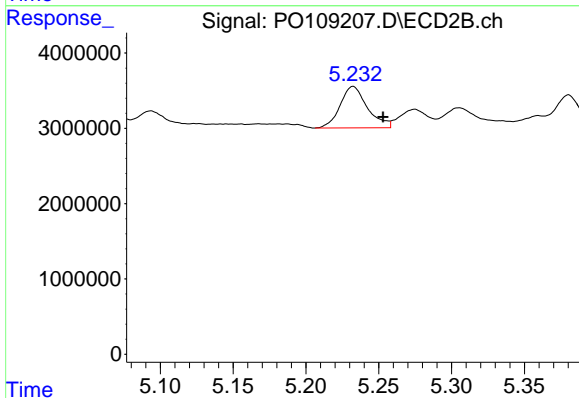
R.T.: 5.020 min
 Delta R.T.: -0.020 min
 Response: 5931048
 Conc: 53.67 ng/ml



#7 AR-1016-5

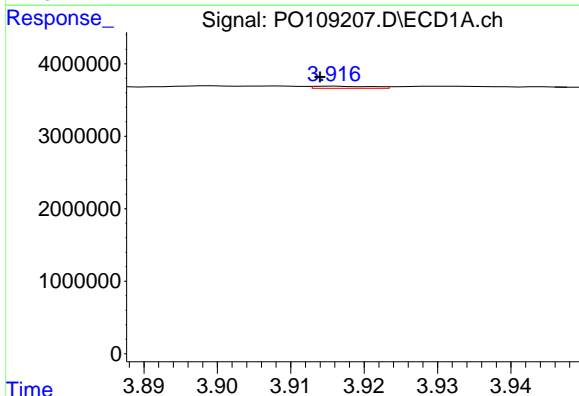
R.T.: 5.250 min
 Delta R.T.: 0.000 min
 Response: 10257712
 Conc: 49.14 ng/ml

Instrument :
 ECD_O
 ClientSampleId :



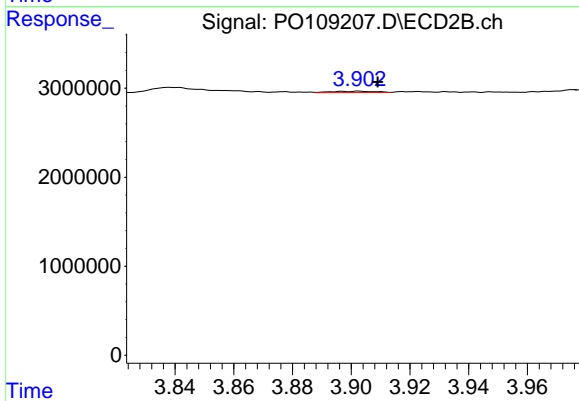
#7 AR-1016-5

R.T.: 5.232 min
 Delta R.T.: -0.021 min
 Response: 7173918
 Conc: 49.98 ng/ml



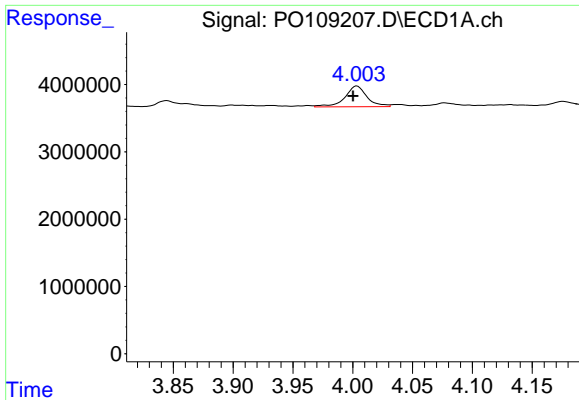
#8 AR-1221-1

R.T.: 3.916 min
 Delta R.T.: 0.002 min
 Response: 161234
 Conc: 1.61 ng/ml



#8 AR-1221-1

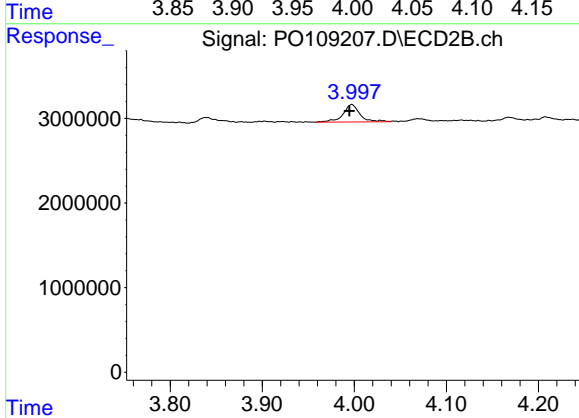
R.T.: 3.903 min
 Delta R.T.: -0.006 min
 Response: 170116
 Conc: 2.60 ng/ml



#9 AR-1221-2

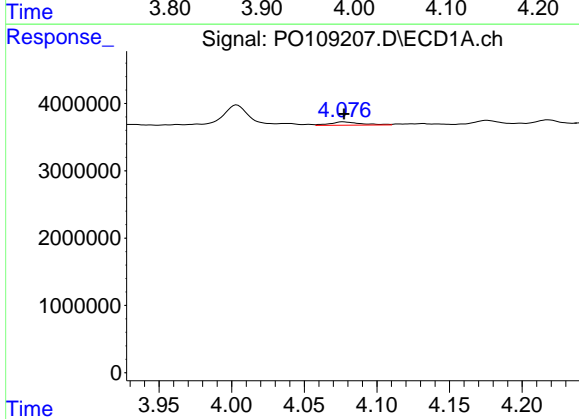
R.T.: 4.004 min
 Delta R.T.: 0.003 min
 Response: 3970751
 Conc: 53.37 ng/ml

Instrument :
 ECD_O
 ClientSampleId :



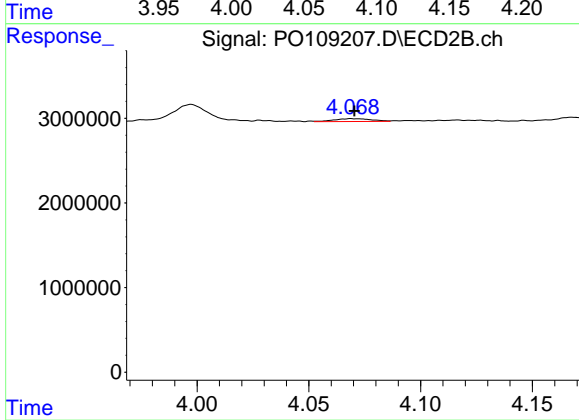
#9 AR-1221-2

R.T.: 3.997 min
 Delta R.T.: 0.003 min
 Response: 2654389
 Conc: 53.75 ng/ml



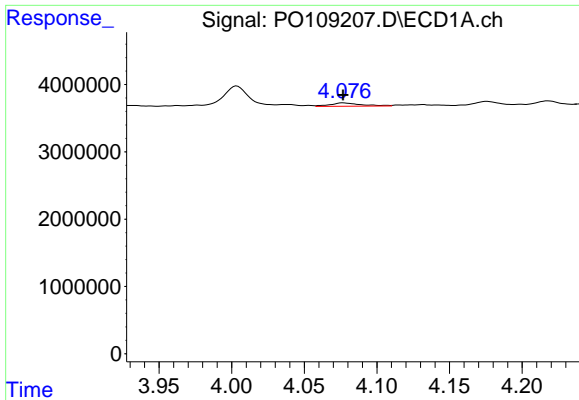
#10 AR-1221-3

R.T.: 4.077 min
 Delta R.T.: 0.000 min
 Response: 725151
 Conc: 3.49 ng/ml



#10 AR-1221-3

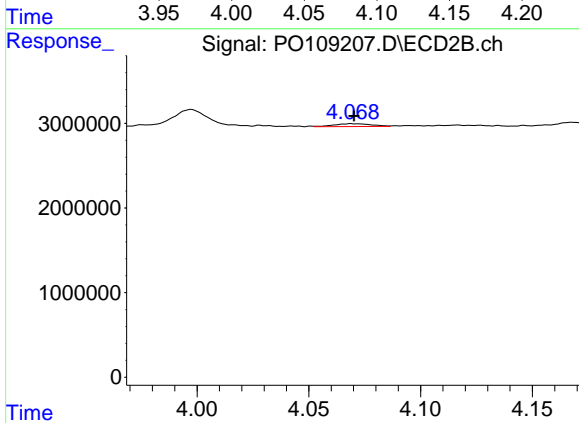
R.T.: 4.069 min
 Delta R.T.: 0.000 min
 Response: 394011
 Conc: 2.71 ng/ml



#11 AR-1232-1

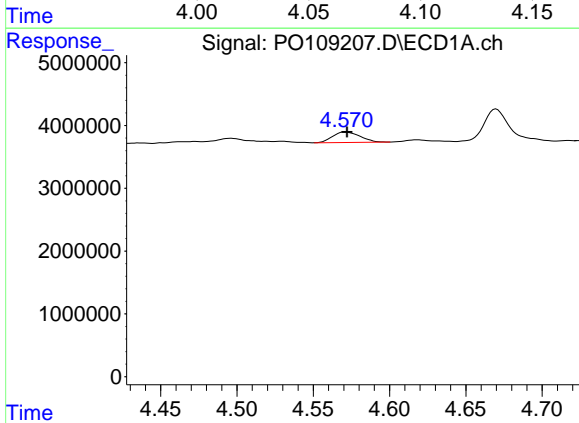
R.T.: 4.077 min
 Delta R.T.: 0.000 min
 Response: 725151
 Conc: 4.39 ng/ml

Instrument :
 ECD_O
 ClientSampleId :



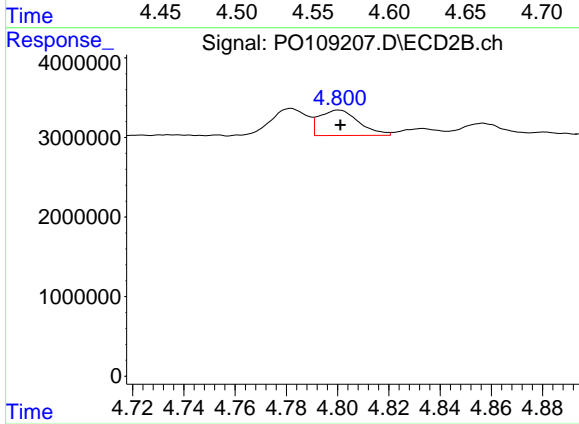
#11 AR-1232-1

R.T.: 4.069 min
 Delta R.T.: 0.000 min
 Response: 394011
 Conc: 3.41 ng/ml



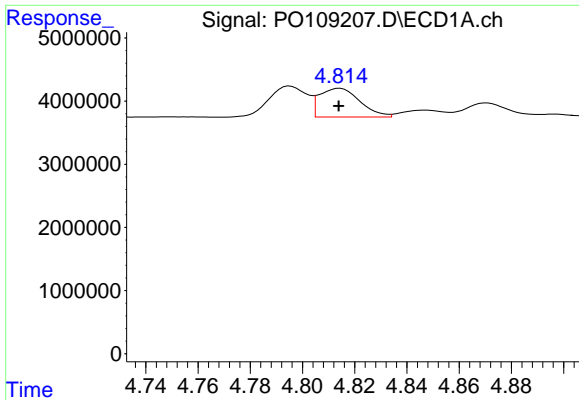
#12 AR-1232-2

R.T.: 4.571 min
 Delta R.T.: -0.001 min
 Response: 2097463
 Conc: 23.05 ng/ml



#12 AR-1232-2

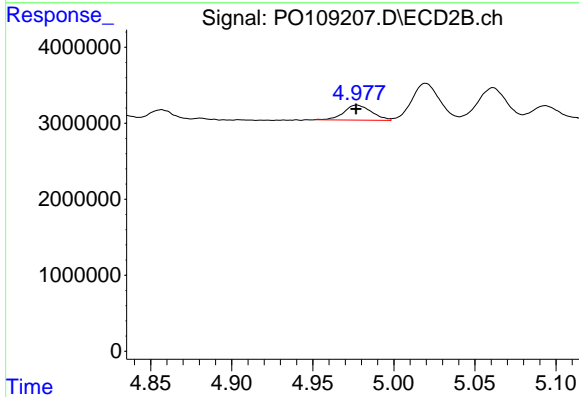
R.T.: 4.800 min
 Delta R.T.: 0.000 min
 Response: 3415840
 Conc: 31.36 ng/ml



#13 AR-1232-3

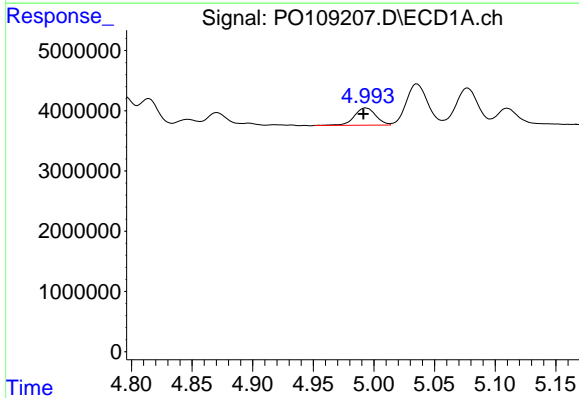
R.T.: 4.814 min
 Delta R.T.: 0.000 min
 Response: 4919503
 Conc: 30.72 ng/ml

Instrument :
 ECD_O
 ClientSampleId :



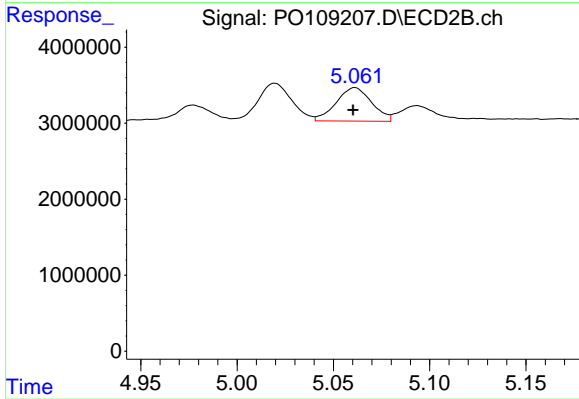
#13 AR-1232-3

R.T.: 4.977 min
 Delta R.T.: 0.000 min
 Response: 2344135
 Conc: 39.09 ng/ml



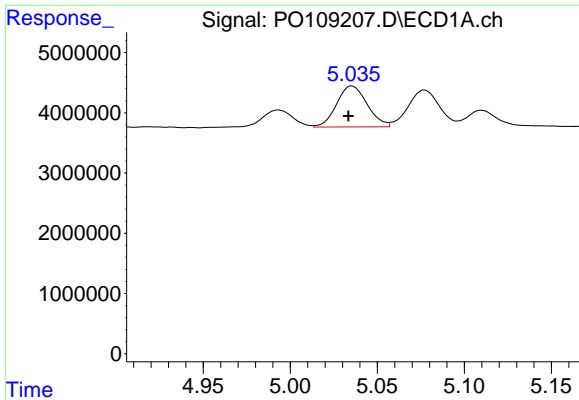
#14 AR-1232-4

R.T.: 4.993 min
 Delta R.T.: 0.002 min
 Response: 3532680
 Conc: 40.14 ng/ml



#14 AR-1232-4

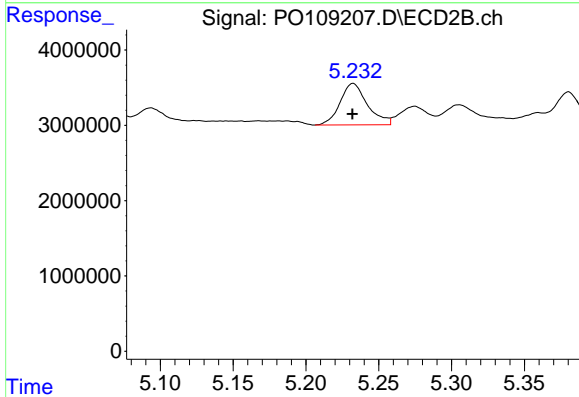
R.T.: 5.061 min
 Delta R.T.: 0.000 min
 Response: 5647994
 Conc: 98.63 ng/ml



#15 AR-1232-5

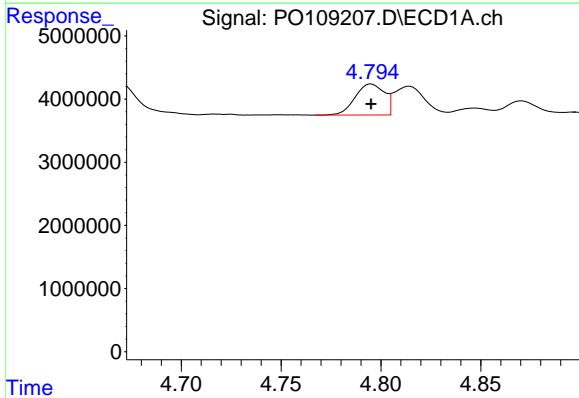
R.T.: 5.036 min
 Delta R.T.: 0.002 min
 Response: 8322167
 Conc: 128.39 ng/ml

Instrument :
 ECD_O
 ClientSampleId :



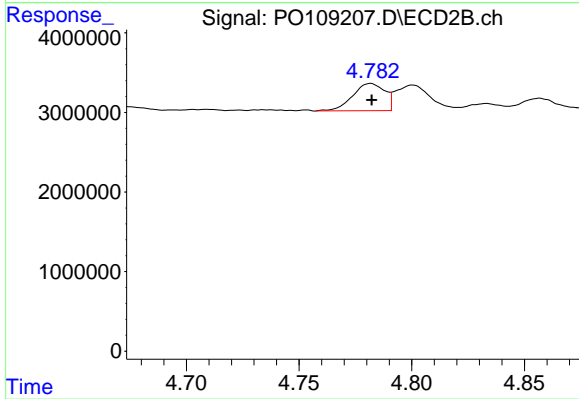
#15 AR-1232-5

R.T.: 5.232 min
 Delta R.T.: 0.000 min
 Response: 7173918
 Conc: 118.24 ng/ml



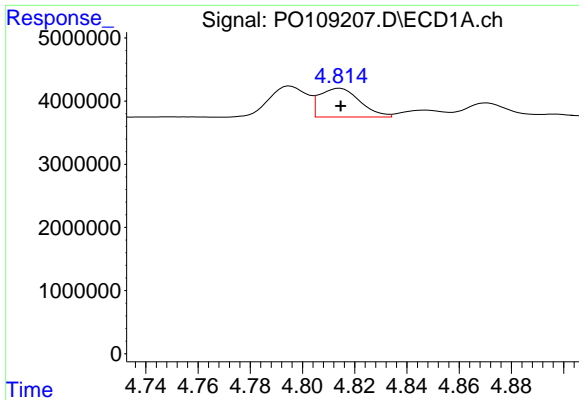
#16 AR-1242-1

R.T.: 4.795 min
 Delta R.T.: 0.000 min
 Response: 4978987
 Conc: 23.44 ng/ml



#16 AR-1242-1

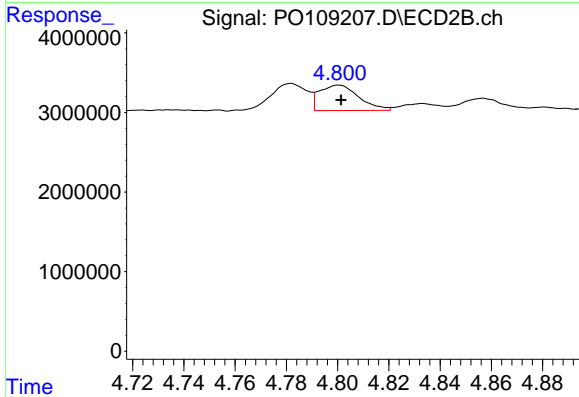
R.T.: 4.782 min
 Delta R.T.: 0.000 min
 Response: 3395887
 Conc: 23.76 ng/ml



#17 AR-1242-2

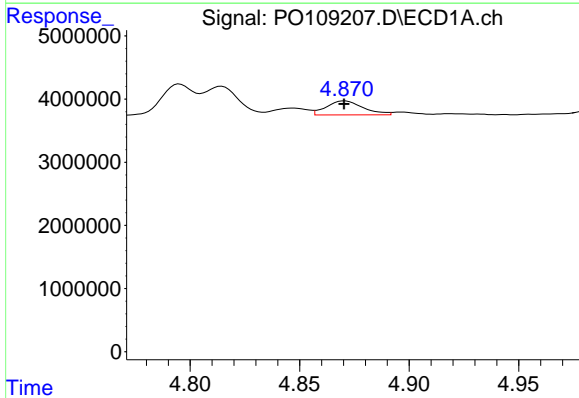
R.T.: 4.814 min
 Delta R.T.: 0.000 min
 Response: 4919503
 Conc: 17.16 ng/ml

Instrument :
 ECD_O
 ClientSampleId :



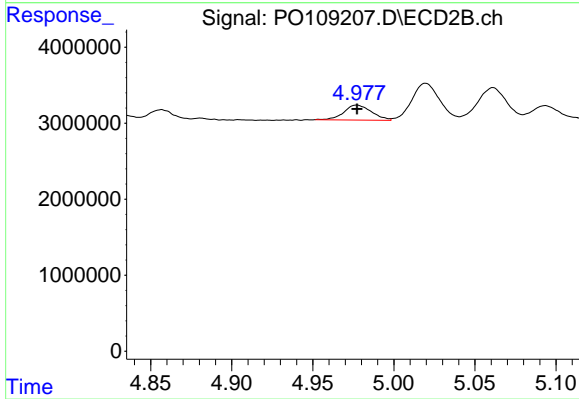
#17 AR-1242-2

R.T.: 4.800 min
 Delta R.T.: 0.000 min
 Response: 3415840
 Conc: 17.32 ng/ml



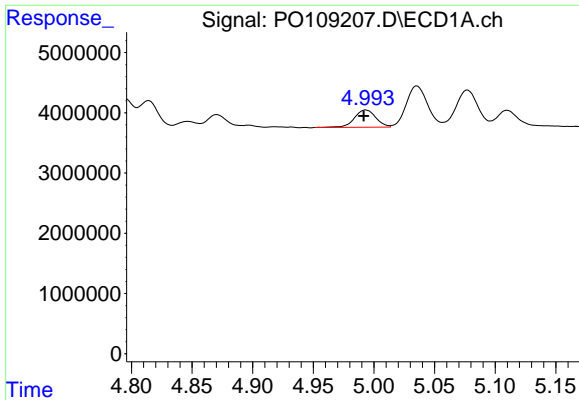
#18 AR-1242-3

R.T.: 4.871 min
 Delta R.T.: 0.000 min
 Response: 2589060
 Conc: 12.65 ng/ml



#18 AR-1242-3

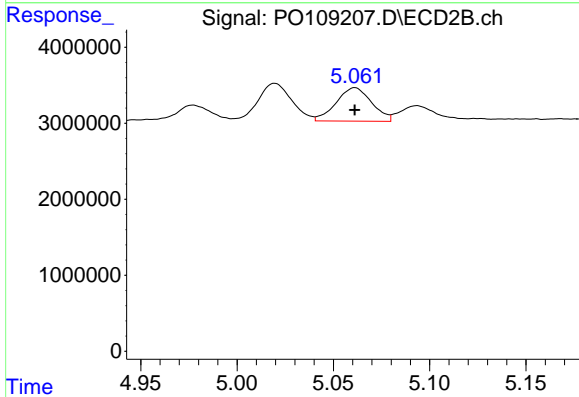
R.T.: 4.977 min
 Delta R.T.: 0.000 min
 Response: 2344135
 Conc: 21.50 ng/ml



#19 AR-1242-4

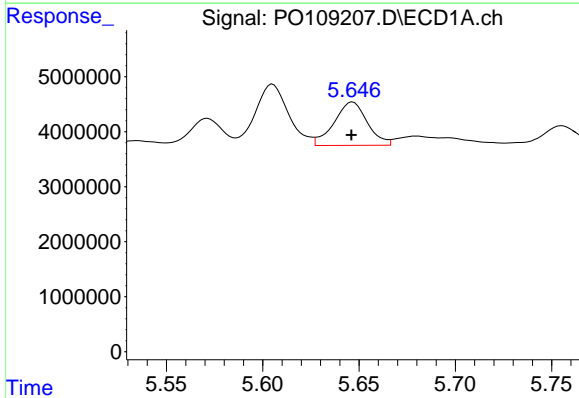
R.T.: 4.993 min
 Delta R.T.: 0.002 min
 Response: 3532680
 Conc: 22.24 ng/ml

Instrument :
 ECD_O
 ClientSampleId :



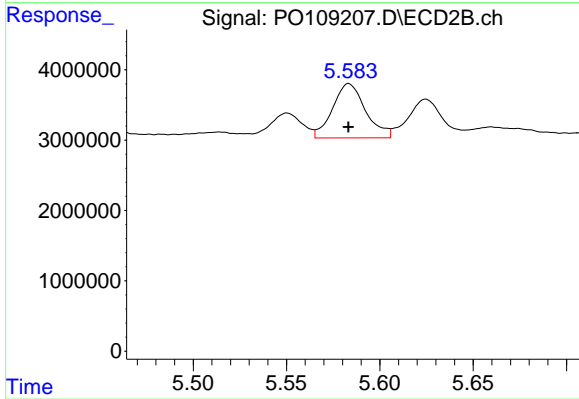
#19 AR-1242-4

R.T.: 5.061 min
 Delta R.T.: 0.000 min
 Response: 5647994
 Conc: 49.70 ng/ml



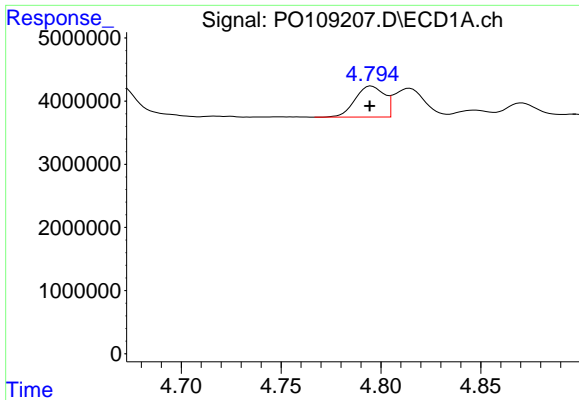
#20 AR-1242-5

R.T.: 5.647 min
 Delta R.T.: 0.000 min
 Response: 9482335
 Conc: 56.77 ng/ml



#20 AR-1242-5

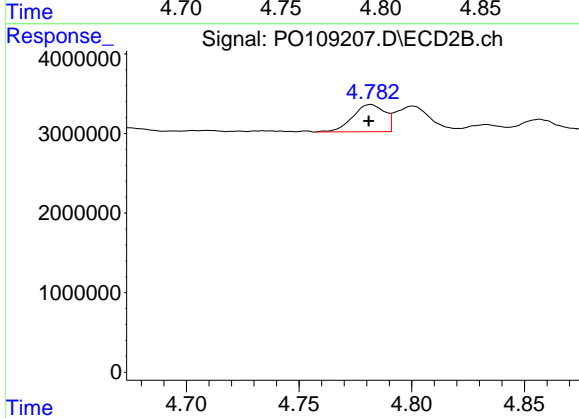
R.T.: 5.583 min
 Delta R.T.: 0.000 min
 Response: 9495200
 Conc: 69.42 ng/ml



#21 AR-1248-1

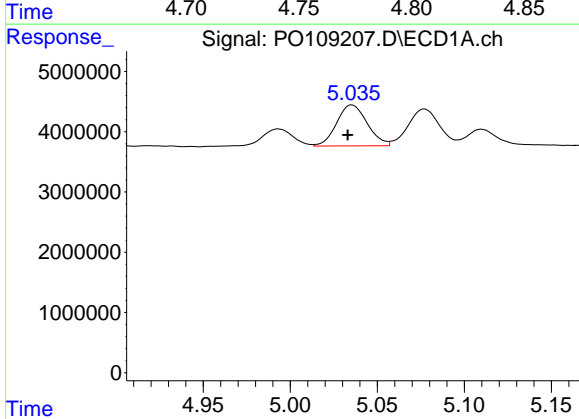
R.T.: 4.795 min
 Delta R.T.: 0.000 min
 Response: 4978987
 Conc: 31.20 ng/ml

Instrument :
 ECD_O
 ClientSampleId :



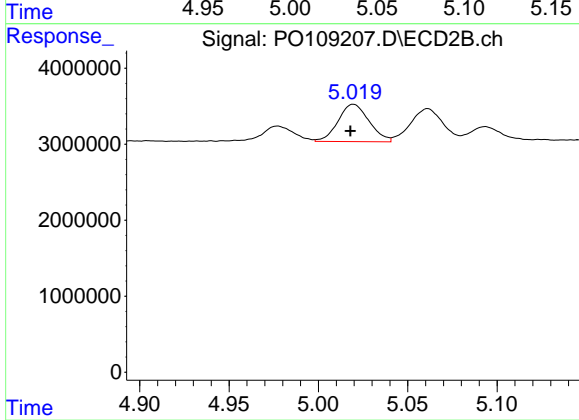
#21 AR-1248-1

R.T.: 4.782 min
 Delta R.T.: 0.000 min
 Response: 3395887
 Conc: 31.64 ng/ml



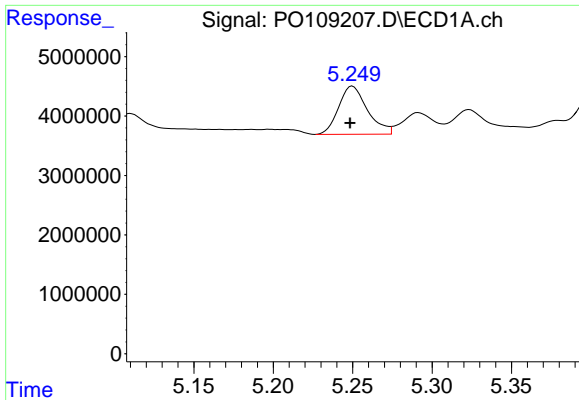
#22 AR-1248-2

R.T.: 5.036 min
 Delta R.T.: 0.003 min
 Response: 8322167
 Conc: 37.24 ng/ml



#22 AR-1248-2

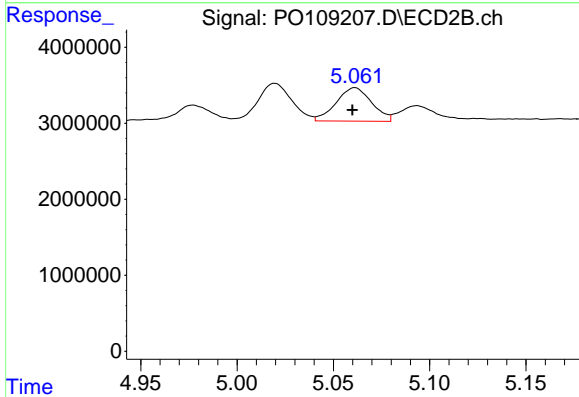
R.T.: 5.020 min
 Delta R.T.: 0.002 min
 Response: 5931048
 Conc: 38.52 ng/ml



#23 AR-1248-3

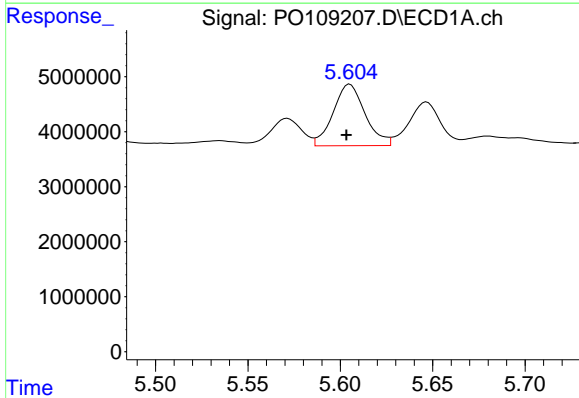
R.T.: 5.250 min
 Delta R.T.: 0.001 min
 Response: 10257712
 Conc: 37.46 ng/ml

Instrument :
 ECD_O
 ClientSampleId :



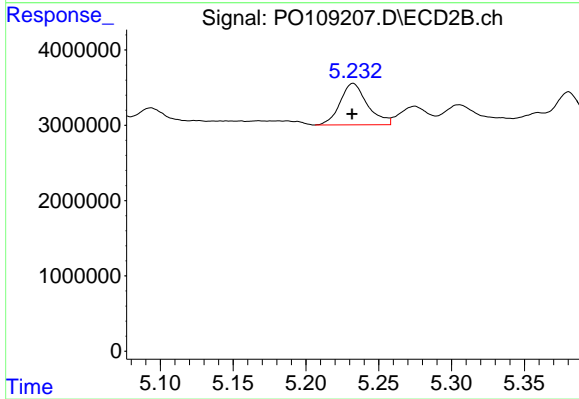
#23 AR-1248-3

R.T.: 5.061 min
 Delta R.T.: 0.001 min
 Response: 5647994
 Conc: 34.15 ng/ml



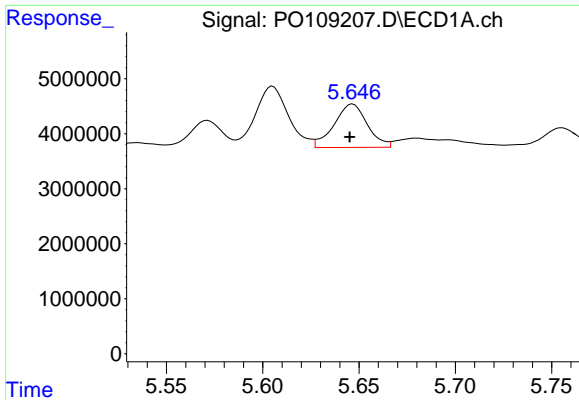
#24 AR-1248-4

R.T.: 5.605 min
 Delta R.T.: 0.002 min
 Response: 13472138
 Conc: 35.03 ng/ml



#24 AR-1248-4

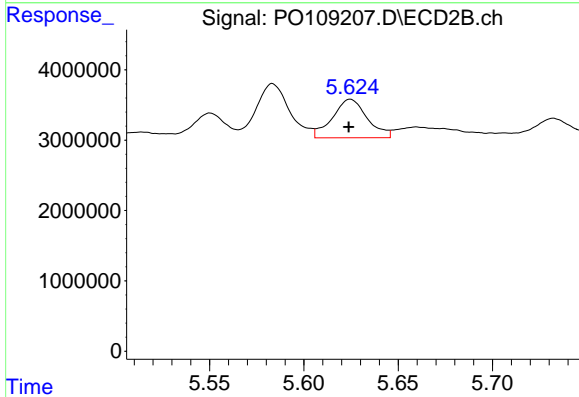
R.T.: 5.232 min
 Delta R.T.: 0.000 min
 Response: 7173918
 Conc: 37.46 ng/ml



#25 AR-1248-5

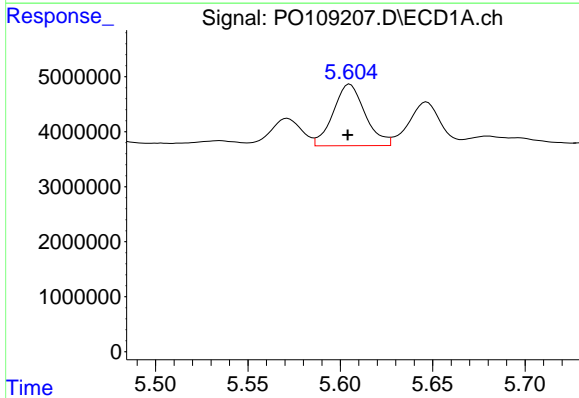
R.T.: 5.647 min
 Delta R.T.: 0.002 min
 Response: 9482335
 Conc: 35.69 ng/ml

Instrument :
 ECD_O
 ClientSampleId :



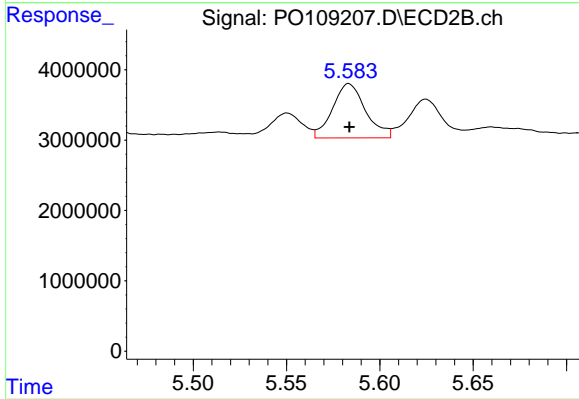
#25 AR-1248-5

R.T.: 5.625 min
 Delta R.T.: 0.000 min
 Response: 7015756
 Conc: 38.29 ng/ml



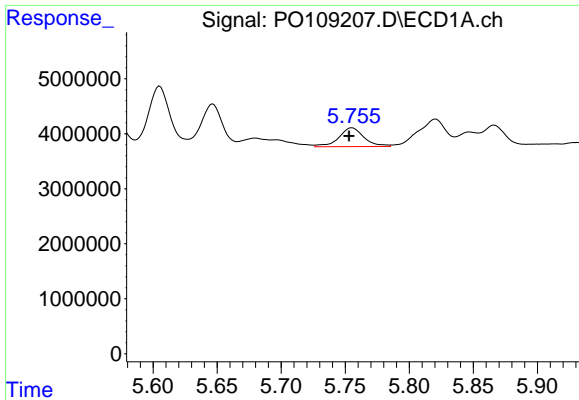
#26 AR-1254-1

R.T.: 5.605 min
 Delta R.T.: 0.001 min
 Response: 13472138
 Conc: 32.58 ng/ml



#26 AR-1254-1

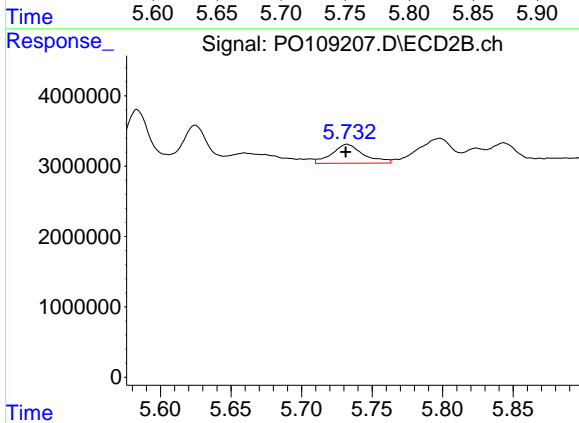
R.T.: 5.583 min
 Delta R.T.: 0.000 min
 Response: 9495200
 Conc: 33.78 ng/ml



#27 AR-1254-2

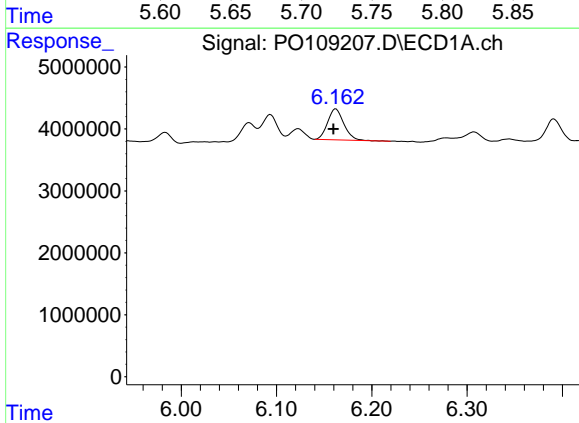
R.T.: 5.755 min
 Delta R.T.: 0.002 min
 Response: 4652427
 Conc: 12.86 ng/ml

Instrument :
 ECD_O
 ClientSampleId :



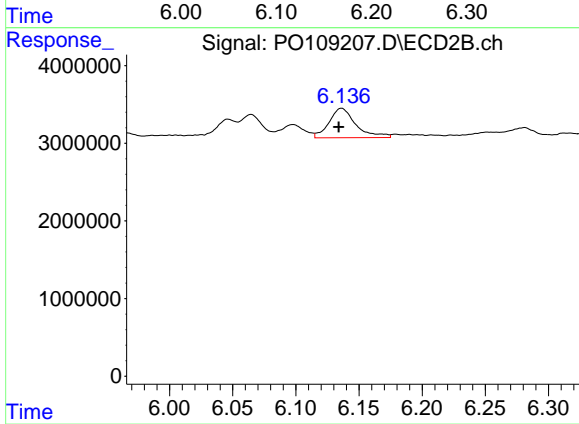
#27 AR-1254-2

R.T.: 5.732 min
 Delta R.T.: 0.001 min
 Response: 4184956
 Conc: 16.72 ng/ml



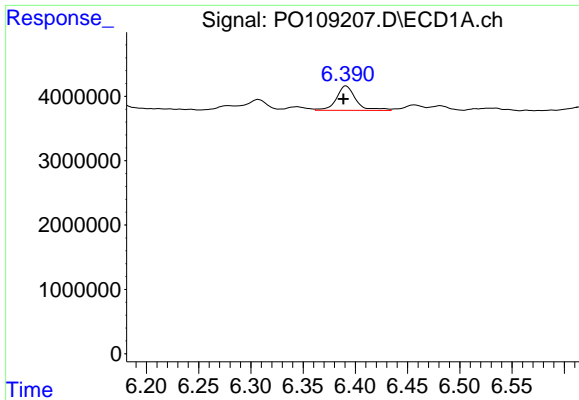
#28 AR-1254-3

R.T.: 6.162 min
 Delta R.T.: 0.003 min
 Response: 5941769
 Conc: 10.53 ng/ml



#28 AR-1254-3

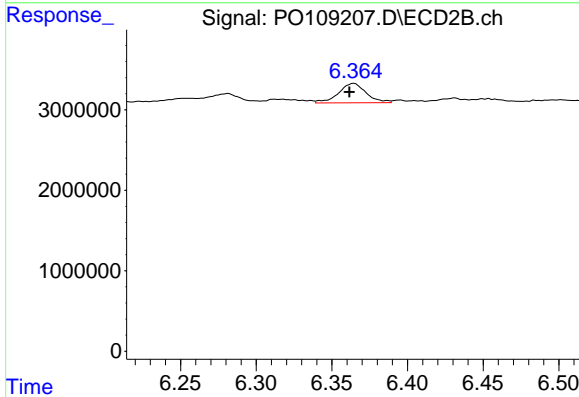
R.T.: 6.136 min
 Delta R.T.: 0.002 min
 Response: 5628127
 Conc: 14.33 ng/ml



#29 AR-1254-4

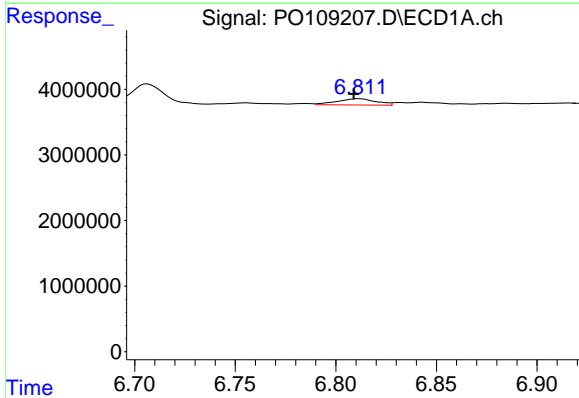
R.T.: 6.391 min
 Delta R.T.: 0.003 min
 Response: 4897685
 Conc: 14.21 ng/ml

Instrument :
 ECD_O
 ClientSampleId :



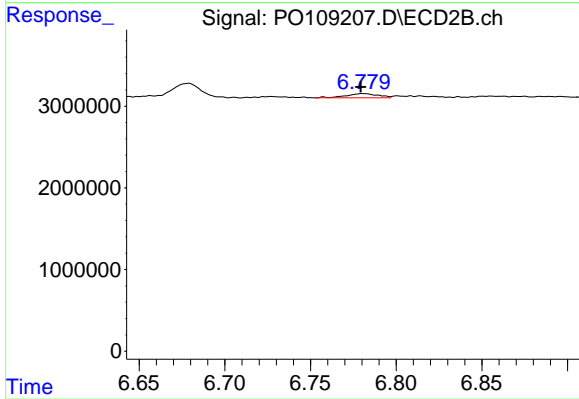
#29 AR-1254-4

R.T.: 6.364 min
 Delta R.T.: 0.003 min
 Response: 3092385
 Conc: 14.03 ng/ml



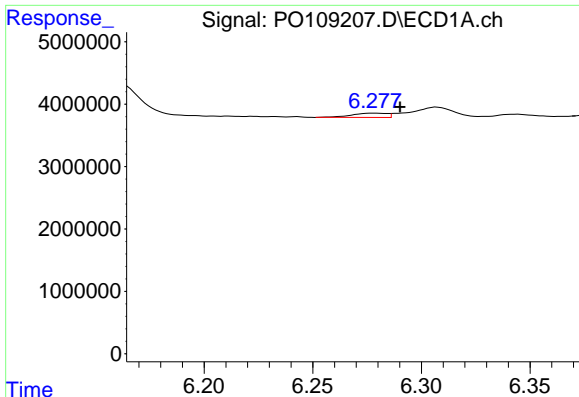
#30 AR-1254-5

R.T.: 6.812 min
 Delta R.T.: 0.003 min
 Response: 1281101
 Conc: 2.50 ng/ml



#30 AR-1254-5

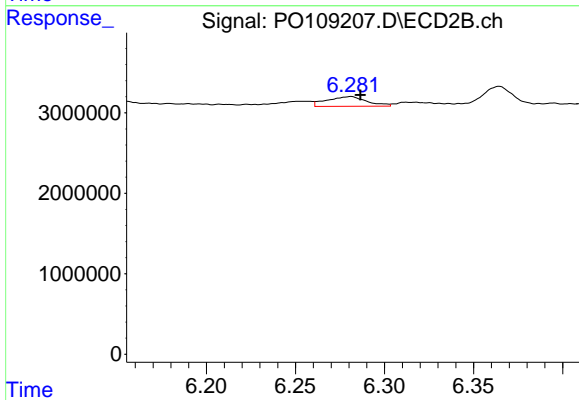
R.T.: 6.781 min
 Delta R.T.: 0.002 min
 Response: 674948
 Conc: 2.07 ng/ml



#31 AR-1260-1

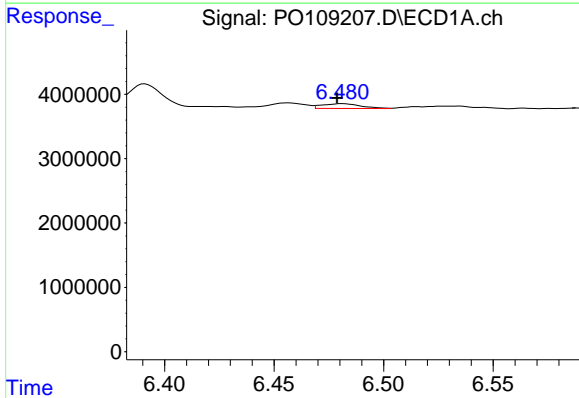
R.T.: 6.278 min
 Delta R.T.: -0.012 min
 Response: 777721
 Conc: 2.04 ng/ml

Instrument :
 ECD_O
 ClientSampleId :



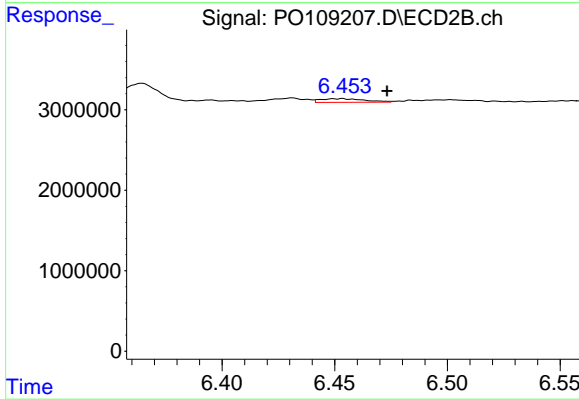
#31 AR-1260-1

R.T.: 6.281 min
 Delta R.T.: -0.005 min
 Response: 1883407
 Conc: 7.47 ng/ml



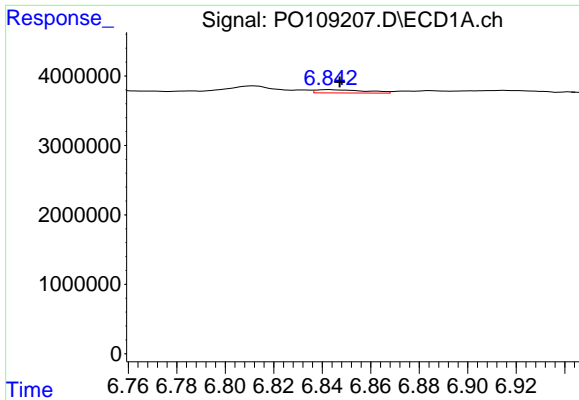
#32 AR-1260-2

R.T.: 6.481 min
 Delta R.T.: 0.002 min
 Response: 918282
 Conc: 1.96 ng/ml



#32 AR-1260-2

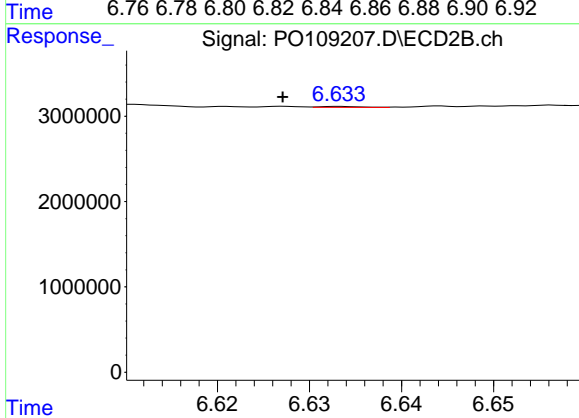
R.T.: 6.453 min
 Delta R.T.: -0.020 min
 Response: 608607
 Conc: 2.02 ng/ml



#33 AR-1260-3

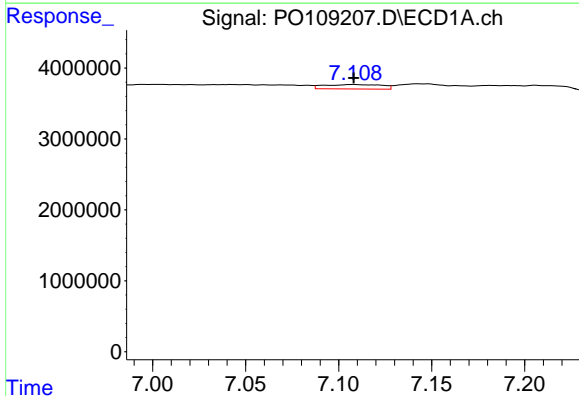
R.T.: 6.843 min
 Delta R.T.: -0.004 min
 Response: 669622
 Conc: 1.71 ng/ml

Instrument :
 ECD_O
 ClientSampleId :



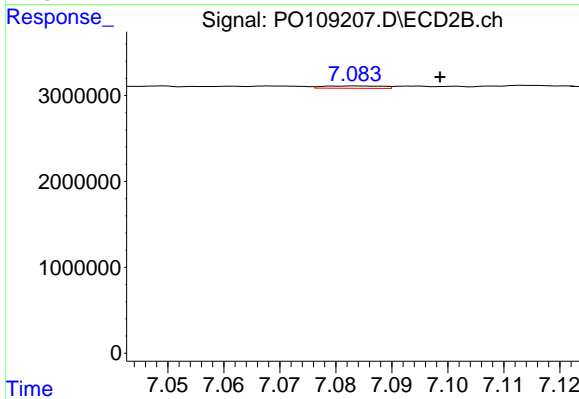
#33 AR-1260-3

R.T.: 6.633 min
 Delta R.T.: 0.006 min
 Response: 36164
 Conc: 0.13 ng/ml



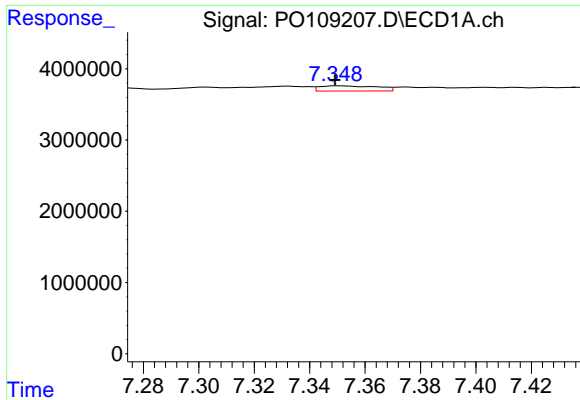
#34 AR-1260-4

R.T.: 7.108 min
 Delta R.T.: 0.000 min
 Response: 1336515
 Conc: 3.73 ng/ml



#34 AR-1260-4

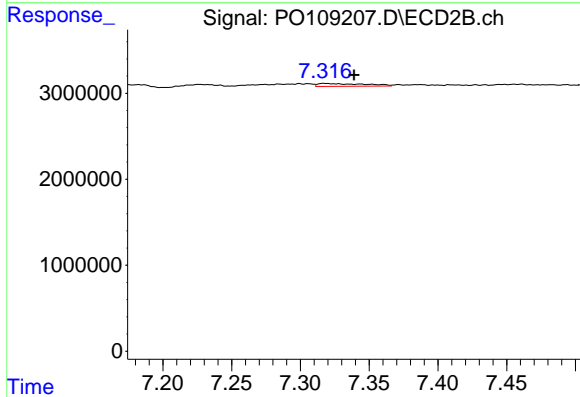
R.T.: 7.083 min
 Delta R.T.: -0.015 min
 Response: 199409
 Conc: 0.88 ng/ml



#35 AR-1260-5

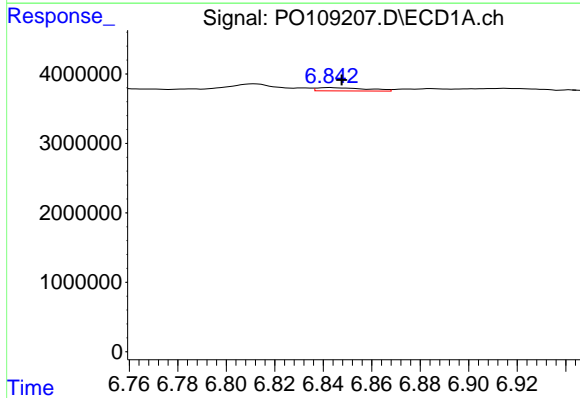
R.T.: 7.350 min
 Delta R.T.: 0.001 min
 Response: 1058172
 Conc: 1.27 ng/ml

Instrument :
 ECD_O
 ClientSampleId :



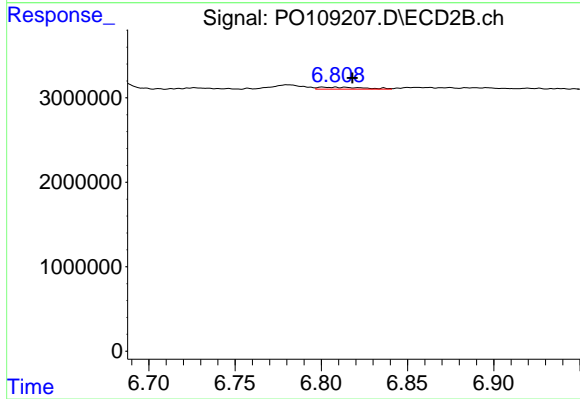
#35 AR-1260-5

R.T.: 7.318 min
 Delta R.T.: -0.022 min
 Response: 789702
 Conc: 1.58 ng/ml



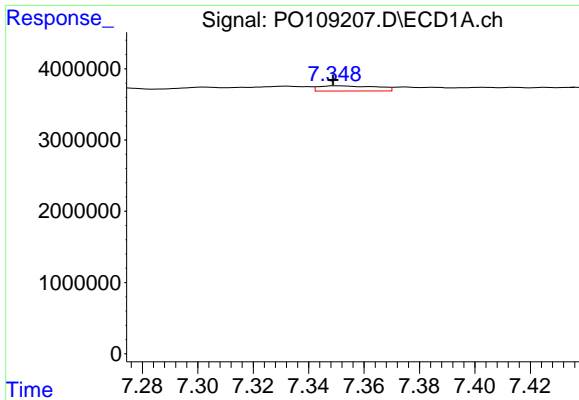
#36 AR-1262-1

R.T.: 6.843 min
 Delta R.T.: -0.005 min
 Response: 669622
 Conc: 1.25 ng/ml



#36 AR-1262-1

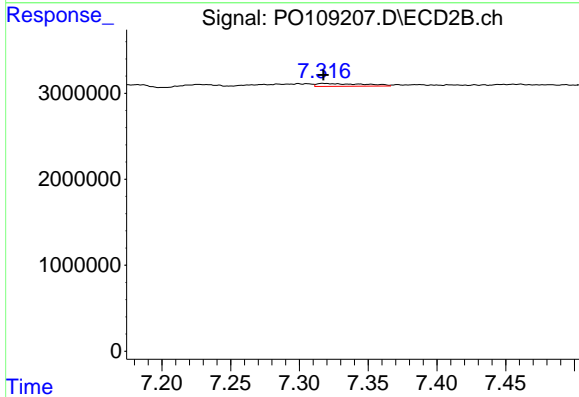
R.T.: 6.808 min
 Delta R.T.: -0.010 min
 Response: 406127
 Conc: 1.19 ng/ml



#37 AR-1262-2

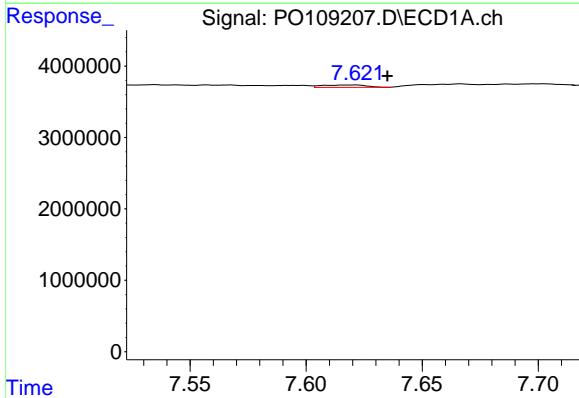
R.T.: 7.350 min
 Delta R.T.: 0.002 min
 Response: 1058172
 Conc: 1.15 ng/ml

Instrument :
 ECD_O
 ClientSampleId :



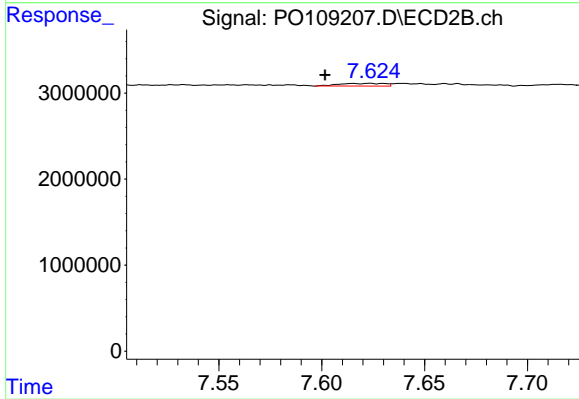
#37 AR-1262-2

R.T.: 7.318 min
 Delta R.T.: 0.000 min
 Response: 789702
 Conc: 1.42 ng/ml



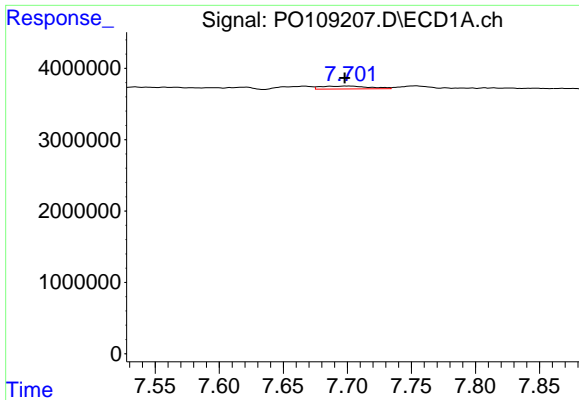
#38 AR-1262-3

R.T.: 7.622 min
 Delta R.T.: -0.013 min
 Response: 435169
 Conc: 1.19 ng/ml



#38 AR-1262-3

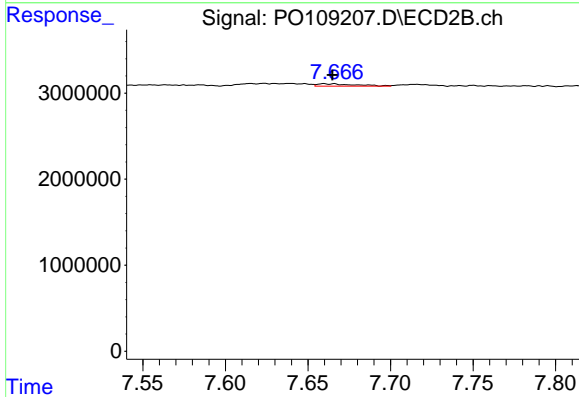
R.T.: 7.615 min
 Delta R.T.: 0.013 min
 Response: 486406
 Conc: 2.27 ng/ml



#39 AR-1262-4

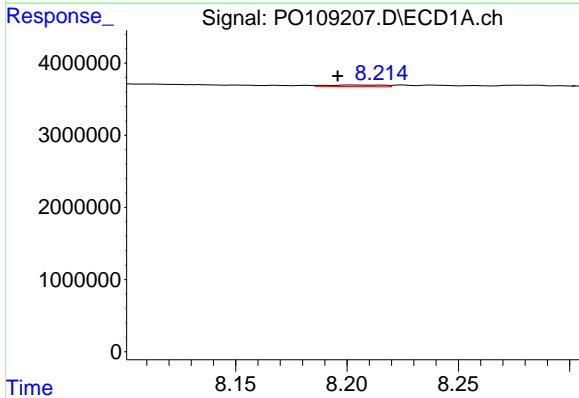
R.T.: 7.702 min
 Delta R.T.: 0.004 min
 Response: 1052673
 Conc: 1.53 ng/ml

Instrument :
 ECD_O
 ClientSampleId :



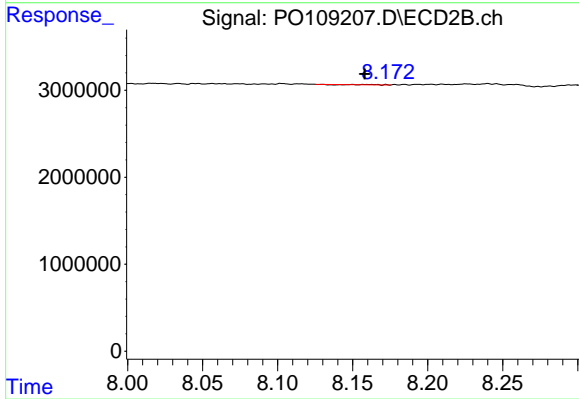
#39 AR-1262-4

R.T.: 7.660 min
 Delta R.T.: -0.005 min
 Response: 450171
 Conc: 1.15 ng/ml



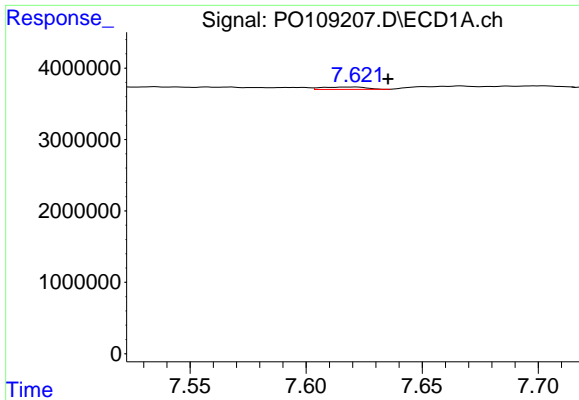
#40 AR-1262-5

R.T.: 8.201 min
 Delta R.T.: 0.005 min
 Response: 394075
 Conc: 1.30 ng/ml



#40 AR-1262-5

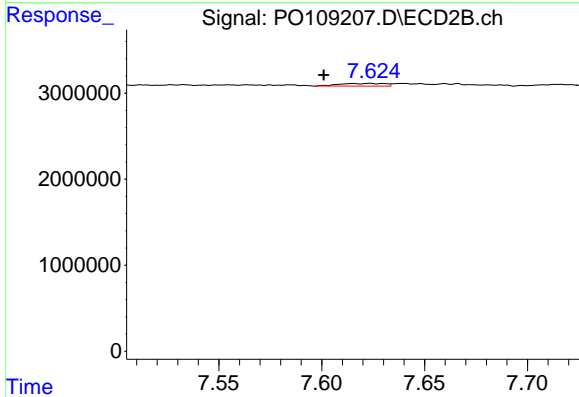
R.T.: 8.150 min
 Delta R.T.: -0.008 min
 Response: 28111
 Conc: 0.18 ng/ml



#41 AR-1268-1

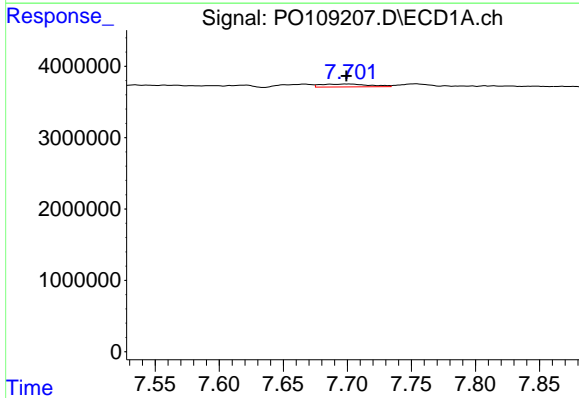
R.T.: 7.622 min
 Delta R.T.: -0.014 min
 Response: 435169
 Conc: 0.41 ng/ml

Instrument :
 ECD_O
 ClientSampleId :



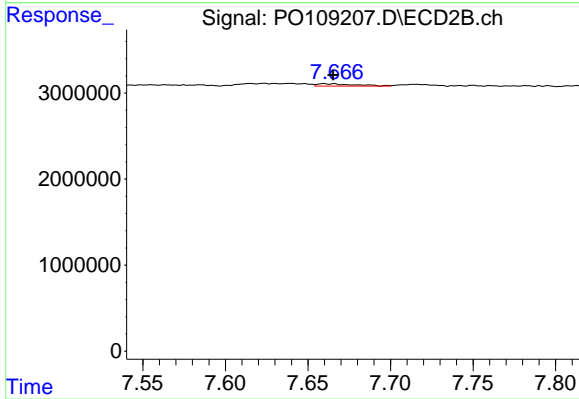
#41 AR-1268-1

R.T.: 7.615 min
 Delta R.T.: 0.014 min
 Response: 486406
 Conc: 0.77 ng/ml



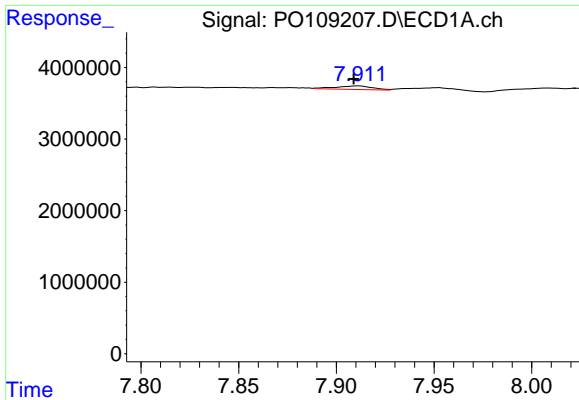
#42 AR-1268-2

R.T.: 7.702 min
 Delta R.T.: 0.002 min
 Response: 1052673
 Conc: 1.09 ng/ml



#42 AR-1268-2

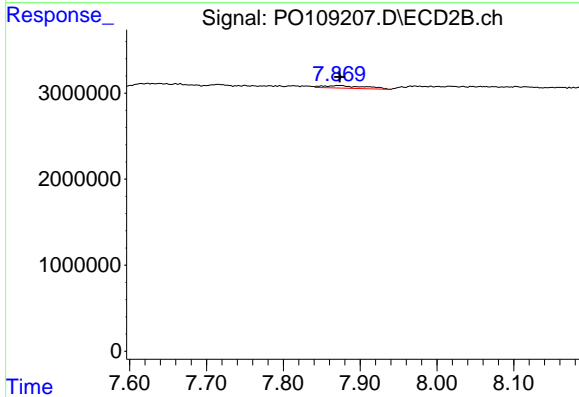
R.T.: 7.660 min
 Delta R.T.: -0.006 min
 Response: 450171
 Conc: 0.79 ng/ml



#43 AR-1268-3

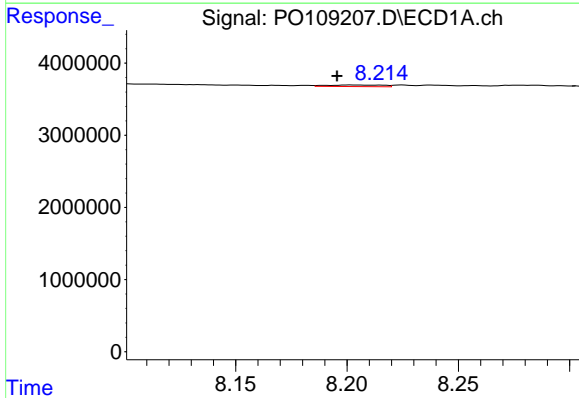
R.T.: 7.911 min
 Delta R.T.: 0.002 min
 Response: 659719
 Conc: 0.82 ng/ml

Instrument :
 ECD_O
 ClientSampleId :



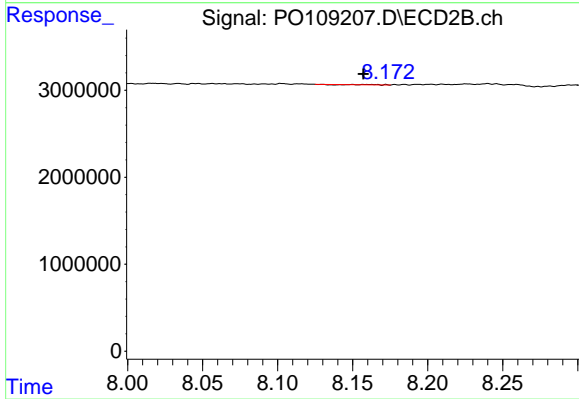
#43 AR-1268-3

R.T.: 7.871 min
 Delta R.T.: -0.003 min
 Response: 1121867
 Conc: 2.44 ng/ml



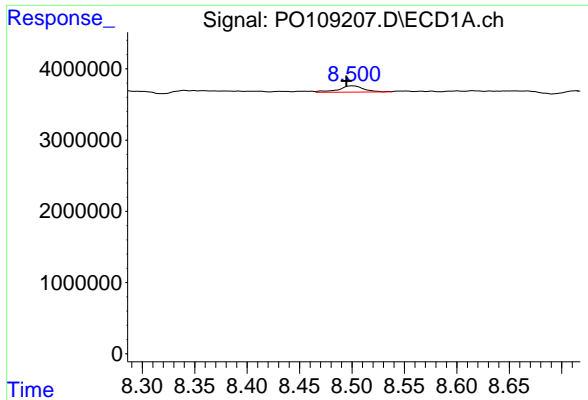
#44 AR-1268-4

R.T.: 8.201 min
 Delta R.T.: 0.006 min
 Response: 394075
 Conc: 1.15 ng/ml



#44 AR-1268-4

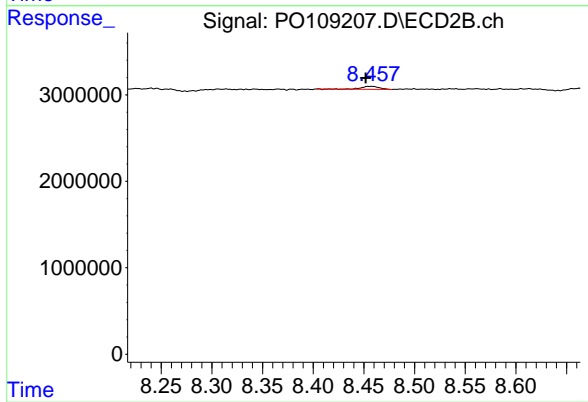
R.T.: 8.150 min
 Delta R.T.: -0.007 min
 Response: 28111
 Conc: 0.16 ng/ml



#45 AR-1268-5

R.T.: 8.500 min
Delta R.T.: 0.006 min
Response: 1495798
Conc: 0.63 ng/ml

Instrument :
ECD_O
ClientSampleId :



#45 AR-1268-5

R.T.: 8.457 min
Delta R.T.: 0.006 min
Response: 435483
Conc: 0.36 ng/ml