

Data Path : Z:\pestpcbsrv\HPCHEM1\ECD\_O\Data\P0012825\  
 Data File : P0109223.D  
 Signal(s) : Signal #1: ECD1A.ch Signal #2: ECD2B.ch  
 Acq On : 29 Jan 2025 11:34  
 Operator : YP/AJ  
 Sample : I.BLK  
 Misc :  
 ALS Vial : 2 Sample Multiplier: 1

Instrument :  
 ECD\_O  
 ClientSampleId :

Integration File signal 1: autoint1.e  
 Integration File signal 2: autoint2.e  
 Quant Time: Jan 29 12:50:21 2025  
 Quant Method : Z:\pestpcbsrv\HPCHEM1\ECD\_O\methods\P0012125.M  
 Quant Title : GC EXTRACTABLES  
 QLast Update : Wed Jan 22 03:46:11 2025  
 Response via : Initial Calibration  
 Integrator: ChemStation

Volume Inj. : 2 µl  
 Signal #1 Phase : ZB-MR2 Signal #2 Phase: ZB-MR2  
 Signal #1 Info : 30Mx0.32mmx 0.50µ Signal #2 Info : 30M x 0.32mm x 0.25µm

Compound	RT#1	RT#2	Resp#1	Resp#2	ng/ml	ng/ml
-----						
System Monitoring Compounds						
1) SA Tetrachlo...	3.700	3.697	146.3E6	96421496	19.365	17.988
2) SA Decachlor...	8.765	8.715	133.8E6	64025706	19.310	18.619
Target Compounds						
3) L1 AR-1016-1	4.806	4.790	11071520	8794923	43.885	54.317
4) L1 AR-1016-2	4.806	4.843	11071520	916549	32.102	3.847 #
5) L1 AR-1016-3	4.858	4.976	355336	6408556	1.456	49.154 #
6) L1 AR-1016-4	4.991	5.034	9930333	7027307	52.038	63.585
7) L1 AR-1016-5	5.262	5.241	32175531	26709238	154.126	186.071
8) L2 AR-1221-1	3.910	3.927	2758961	1385369	27.562	21.154
9) L2 AR-1221-2	4.003	3.997	5378128	2161031	72.280	43.756 #
10) L2 AR-1221-3	4.079	4.067	2194159	382691	10.548	2.636 #
11) L3 AR-1232-1	4.079	4.067	2194159	382691	13.288	3.313 #
12) L3 AR-1232-2	4.533f	4.790	3302747	8794923	36.301	80.752 #
13) L3 AR-1232-3	4.806	4.976	11071520	6408556	69.131	106.868 #
14) L3 AR-1232-4	4.991	5.034	9930333	7027307	112.843	122.722
15) L3 AR-1232-5	4.991f	5.241	9930333	26709238	153.203	440.224 #
16) L4 AR-1242-1	4.806	4.790	11071520	8794923	52.116	61.541
17) L4 AR-1242-2	4.806	4.790	11071520	8794923	38.614	44.595
18) L4 AR-1242-3	4.858	4.976	355336	6408556	1.736	58.771 #
19) L4 AR-1242-4	4.991	5.034	9930333	7027307	62.506	61.836
20) L4 AR-1242-5	5.660	5.609	4713727	53020738	28.221	387.616 #
21) L5 AR-1248-1	4.806	4.790	11071520	8794923	69.383	81.951
22) L5 AR-1248-2	4.991f	5.034	9930333	7027307	44.433	45.639
23) L5 AR-1248-3	5.262	5.034	32175531	7027307	117.489	42.493 #
24) L5 AR-1248-4	5.579	5.241	14305050	26709238	37.200	139.470 #
25) L5 AR-1248-5	5.660	5.609	4713727	53020738	17.743	289.396 #
26) L6 AR-1254-1	5.629	5.609	41400001	53020738	100.113	188.630 #
27) L6 AR-1254-2	5.752	5.731	12077531	26880894	33.379	107.411 #
28) L6 AR-1254-3	6.166	6.137	948100	12074939	1.681	30.739 #
29) L6 AR-1254-4	6.397	6.367	3587129	9524846	10.409	43.226 #
30) L6 AR-1254-5	6.810	6.779	2531327	1201287	4.933	3.677 #
31) L7 AR-1260-1	6.288	6.255	1375982	19902643	3.610	78.963 #
32) L7 AR-1260-2	6.457	6.469	19353022	3945287	41.213	13.116 #
33) L7 AR-1260-3	6.847	6.653	2237692	2419427	5.715	8.691 #
34) L7 AR-1260-4	7.108	7.105	1852556	896445	5.175	3.973
35) L7 AR-1260-5	7.352	7.358	7293933	221475	8.739	0.442 #
36) L8 AR-1262-1	6.847	6.814	2237692	817165	4.190	2.401 #
37) L8 AR-1262-2	7.352	7.319	7293933	2444169	7.933	4.407 #
38) L8 AR-1262-3	7.651	7.620	21801270	13409790	59.800	62.534
39) L8 AR-1262-4	7.651f	7.620f	21801270	13409790	31.705	34.218
40) L8 AR-1262-5	8.237f	8.189	1526192	91060	5.052	0.571 #
41) L9 AR-1268-1	7.651	7.620	21801270	13409790	20.476	21.302

Data Path : Z:\pestpcbsrv\HPCHEM1\ECD\_0\Data\P0012825\  
 Data File : P0109223.D  
 Signal(s) : Signal #1: ECD1A.ch Signal #2: ECD2B.ch  
 Acq On : 29 Jan 2025 11:34  
 Operator : YP/AJ  
 Sample : I.BLK  
 Misc :  
 ALS Vial : 2 Sample Multiplier: 1

Instrument :  
 ECD\_0  
 ClientSampleId :

Integration File signal 1: autoint1.e  
 Integration File signal 2: autoint2.e  
 Quant Time: Jan 29 12:50:21 2025  
 Quant Method : Z:\pestpcbsrv\HPCHEM1\ECD\_0\methods\P0012125.M  
 Quant Title : GC EXTRACTABLES  
 QLast Update : Wed Jan 22 03:46:11 2025  
 Response via : Initial Calibration  
 Integrator: ChemStation

Volume Inj. : 2 µl  
 Signal #1 Phase : ZB-MR1 Signal #2 Phase: ZB-MR2  
 Signal #1 Info : 30Mx0.32mmx 0.50µ Signal #2 Info : 30M x 0.32mm x 0.25µm

	Compound	RT#1	RT#2	Resp#1	Resp#2	ng/ml	ng/ml
42)	L9 AR-1268-2	7.651f	7.620f	21801270	13409790	22.496	23.480
43)	L9 AR-1268-3	7.897	7.856	8493904	5086095	10.544	11.043
44)	L9 AR-1268-4	8.237f	8.189	1526192	91060	4.455	0.504 #
45)	L9 AR-1268-5	8.500	8.454	1195265	398900	0.500	0.333 #

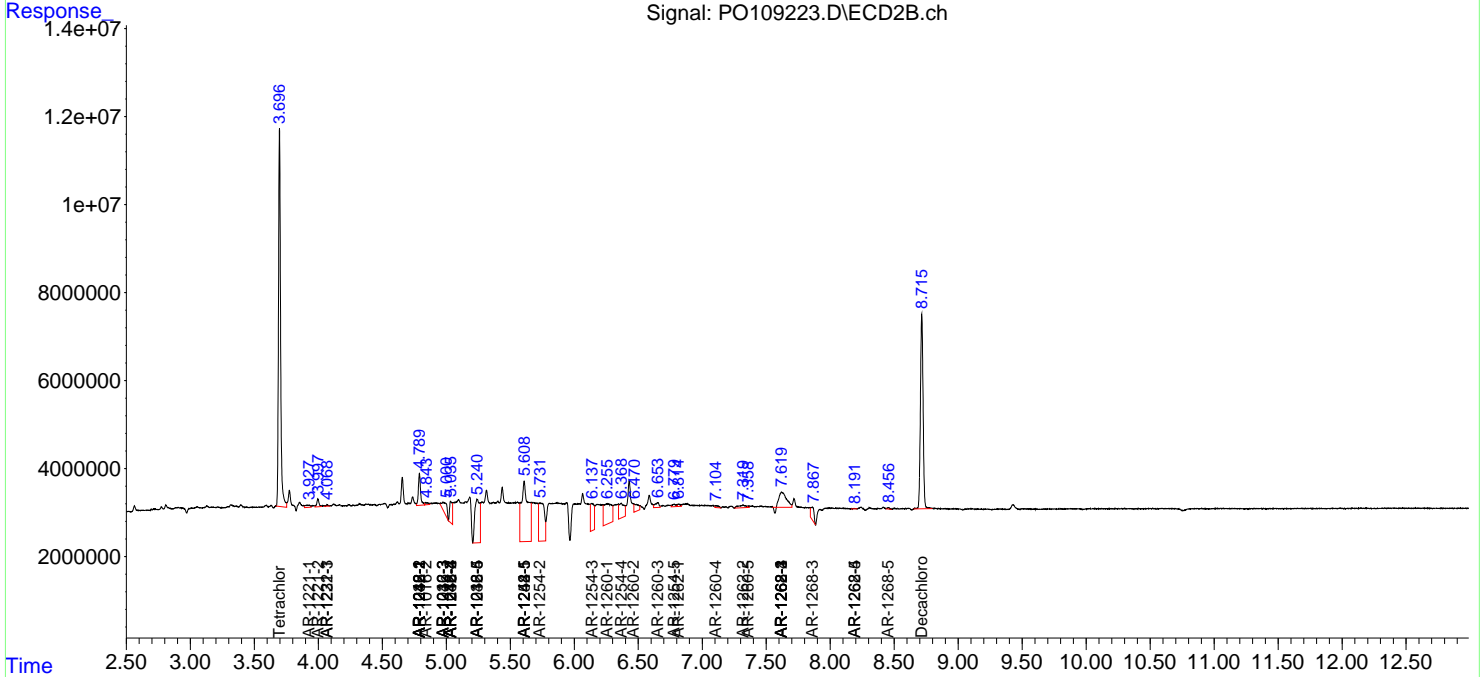
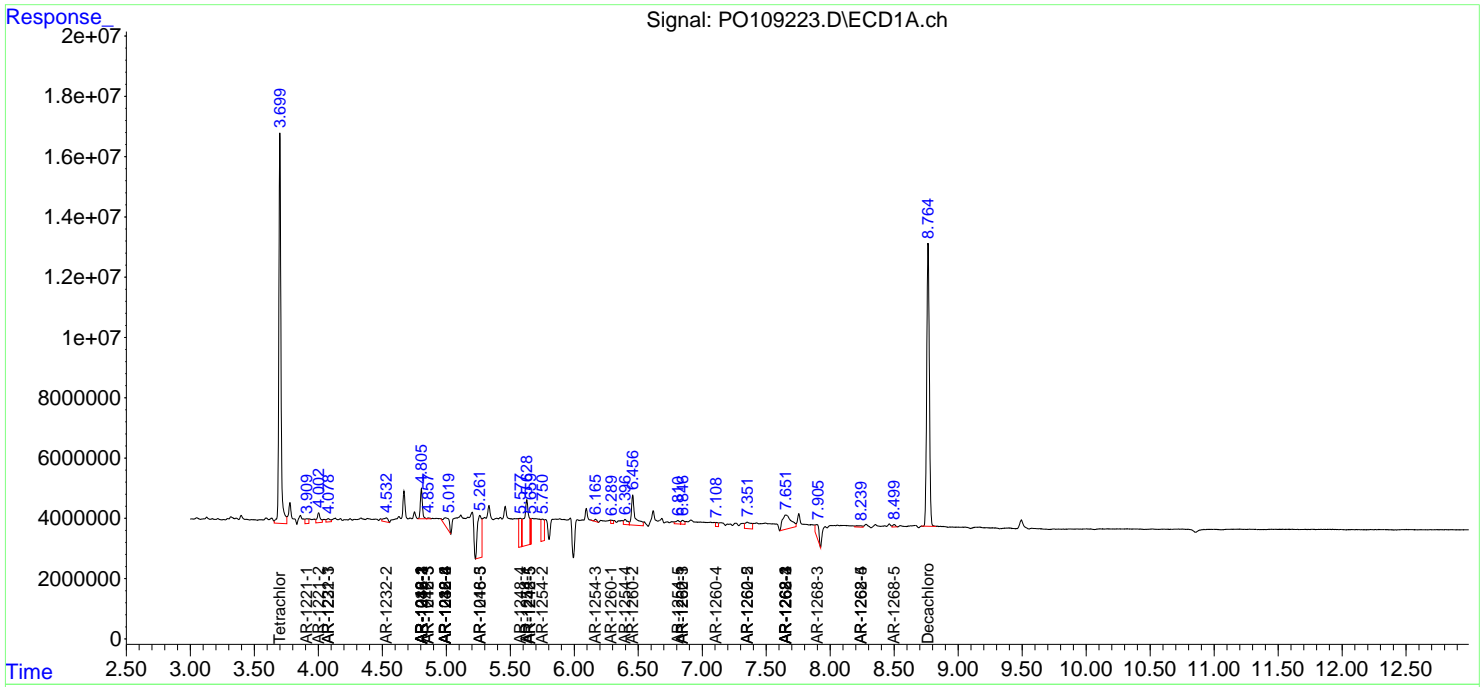
(f)=RT Delta > 1/2 Window (#)=Amounts differ by > 25% (m)=manual int.

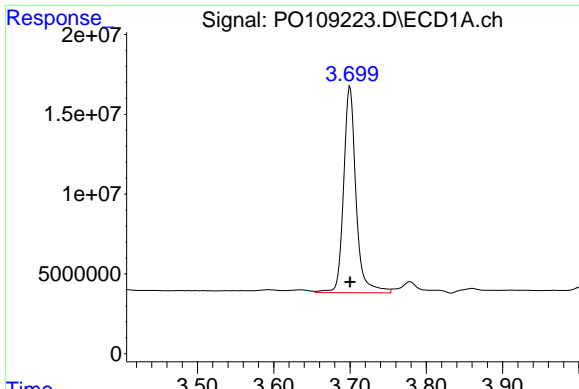
Data Path : Z:\pestpcbsrv\HPCHEM1\ECD\_O\Data\PO012825\  
 Data File : PO109223.D  
 Signal(s) : Signal #1: ECD1A.ch Signal #2: ECD2B.ch  
 Acq On : 29 Jan 2025 11:34  
 Operator : YP/AJ  
 Sample : I.BLK  
 Misc :  
 ALS Vial : 2 Sample Multiplier: 1

Instrument :  
 ECD\_O  
 ClientSampleId :

Integration File signal 1: autoint1.e  
 Integration File signal 2: autoint2.e  
 Quant Time: Jan 29 12:50:21 2025  
 Quant Method : Z:\pestpcbsrv\HPCHEM1\ECD\_O\methods\PO012125.M  
 Quant Title : GC EXTRACTABLES  
 QLast Update : Wed Jan 22 03:46:11 2025  
 Response via : Initial Calibration  
 Integrator: ChemStation

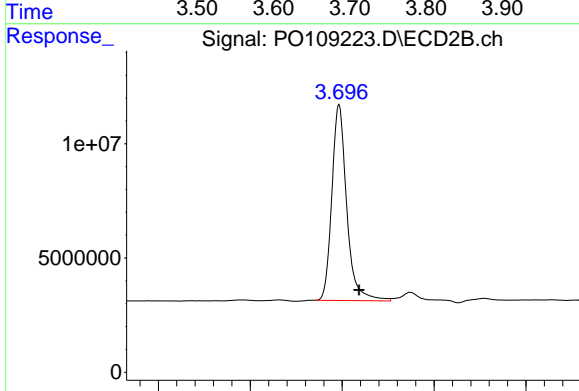
Volume Inj. : 2 µl  
 Signal #1 Phase : ZB-MR1 Signal #2 Phase: ZB-MR2  
 Signal #1 Info : 30Mx0.32mmx 0.50µ Signal #2 Info : 30M x 0.32mm x 0.25µm



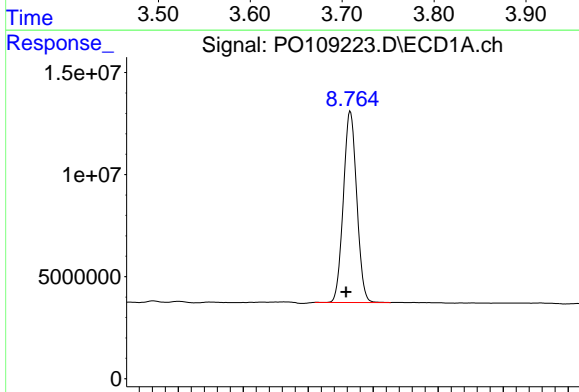


#1 Tetrachloro-m-xylene  
 R.T.: 3.700 min  
 Delta R.T.: 0.000 min  
 Response: 146327974  
 Conc: 19.36 ng/ml

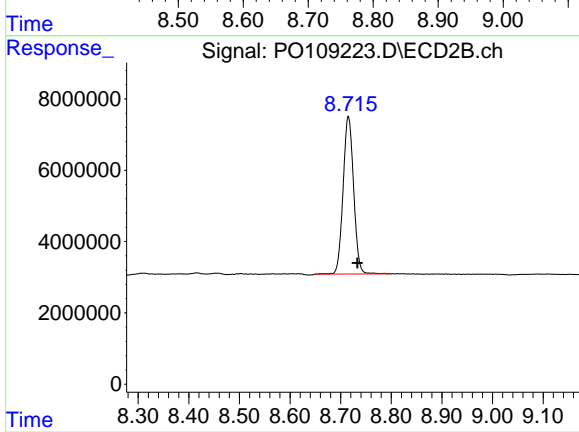
Instrument :  
 ECD\_O  
 ClientSampleId :



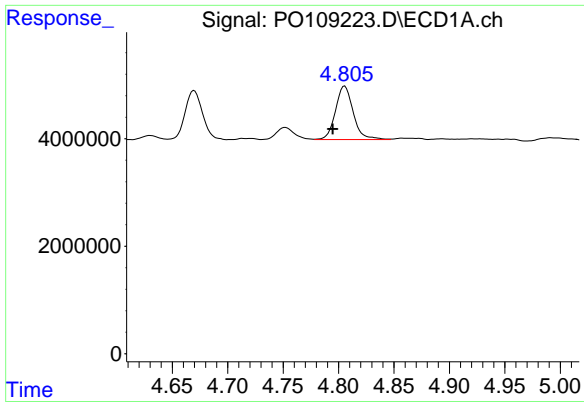
#1 Tetrachloro-m-xylene  
 R.T.: 3.697 min  
 Delta R.T.: -0.022 min  
 Response: 96421496  
 Conc: 17.99 ng/ml



#2 Decachlorobiphenyl  
 R.T.: 8.765 min  
 Delta R.T.: 0.007 min  
 Response: 133773362  
 Conc: 19.31 ng/ml



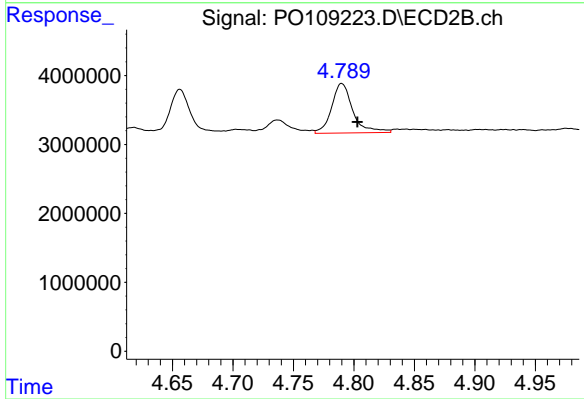
#2 Decachlorobiphenyl  
 R.T.: 8.715 min  
 Delta R.T.: -0.018 min  
 Response: 64025706  
 Conc: 18.62 ng/ml



#3 AR-1016-1

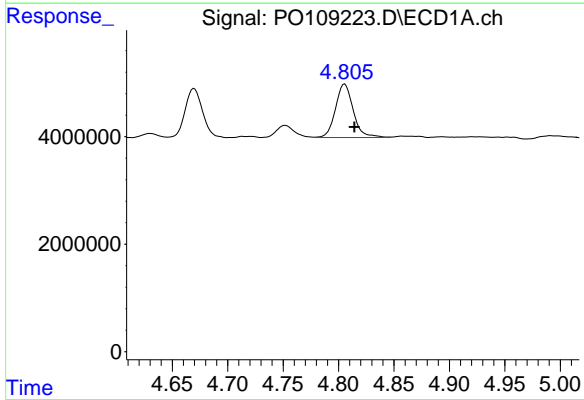
R.T.: 4.806 min  
 Delta R.T.: 0.011 min  
 Response: 11071520  
 Conc: 43.88 ng/ml

Instrument :  
 ECD\_O  
 ClientSampleId :



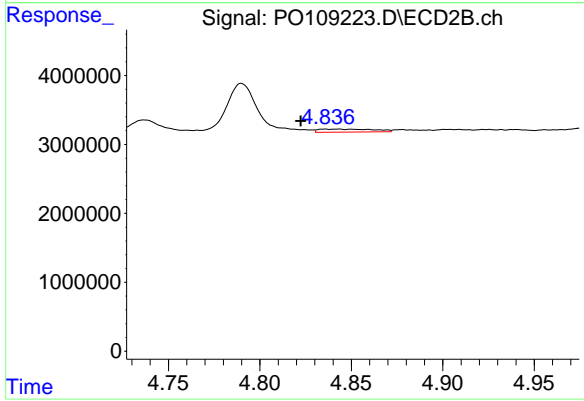
#3 AR-1016-1

R.T.: 4.790 min  
 Delta R.T.: -0.013 min  
 Response: 8794923  
 Conc: 54.32 ng/ml



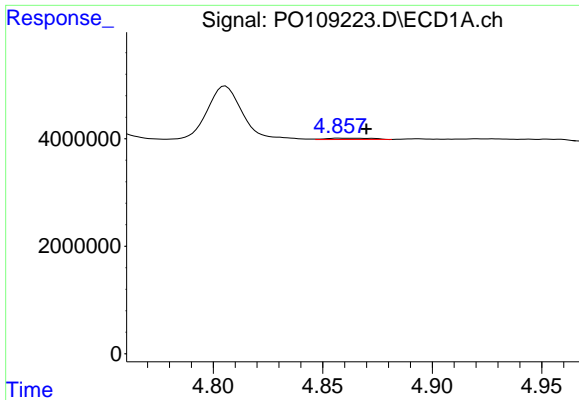
#4 AR-1016-2

R.T.: 4.806 min  
 Delta R.T.: -0.009 min  
 Response: 11071520  
 Conc: 32.10 ng/ml



#4 AR-1016-2

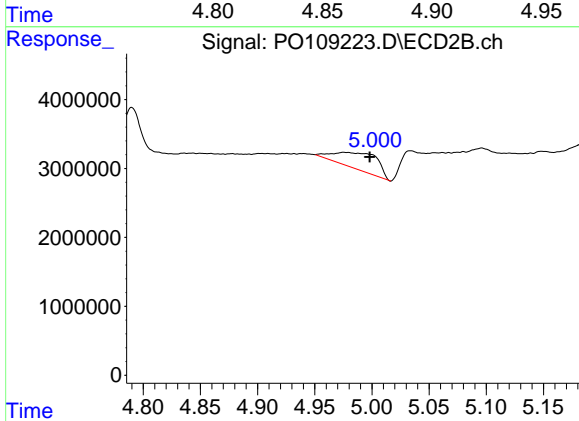
R.T.: 4.843 min  
 Delta R.T.: 0.021 min  
 Response: 916549  
 Conc: 3.85 ng/ml



#5 AR-1016-3

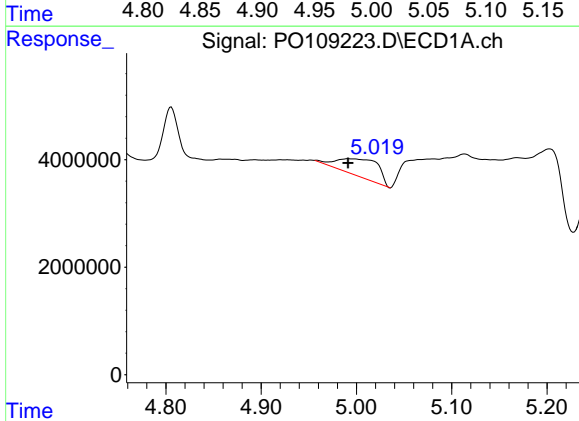
R.T.: 4.858 min  
 Delta R.T.: -0.012 min  
 Response: 355336  
 Conc: 1.46 ng/ml

Instrument :  
 ECD\_O  
 ClientSampleId :



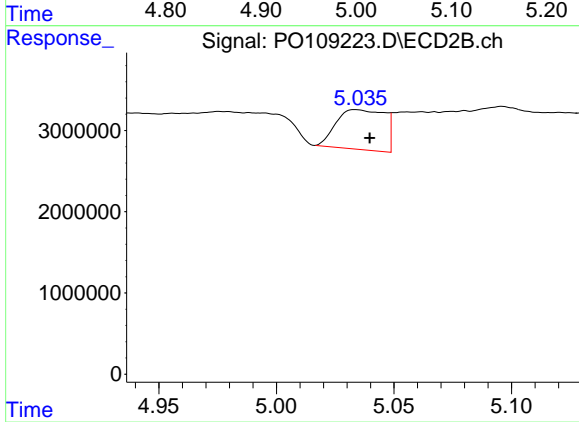
#5 AR-1016-3

R.T.: 4.976 min  
 Delta R.T.: -0.022 min  
 Response: 640856  
 Conc: 49.15 ng/ml



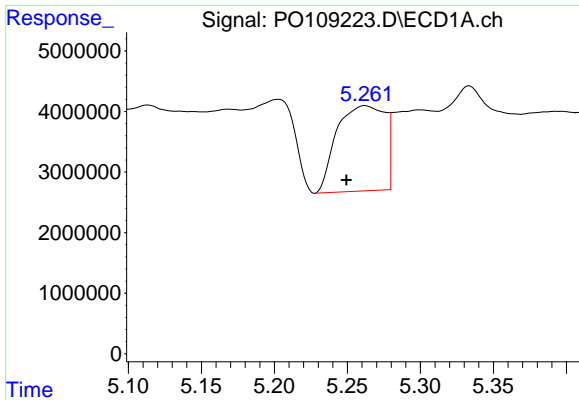
#6 AR-1016-4

R.T.: 4.991 min  
 Delta R.T.: 0.000 min  
 Response: 993033  
 Conc: 52.04 ng/ml



#6 AR-1016-4

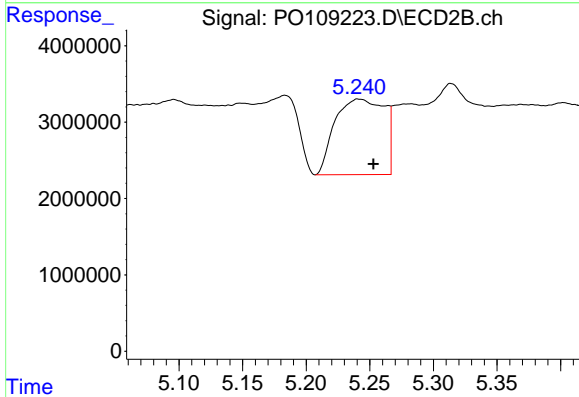
R.T.: 5.034 min  
 Delta R.T.: -0.006 min  
 Response: 7027307  
 Conc: 63.58 ng/ml



#7 AR-1016-5

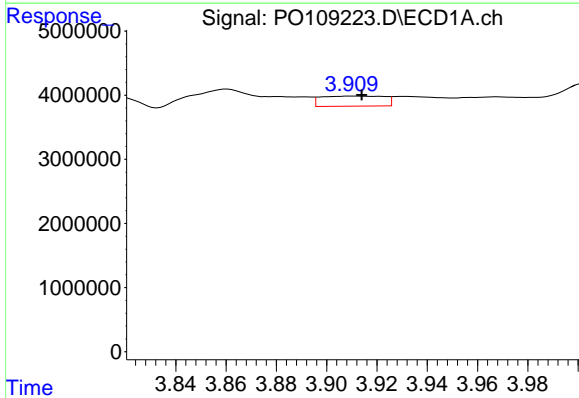
R.T.: 5.262 min  
 Delta R.T.: 0.013 min  
 Response: 32175531  
 Conc: 154.13 ng/ml

Instrument :  
 ECD\_O  
 ClientSampleId :



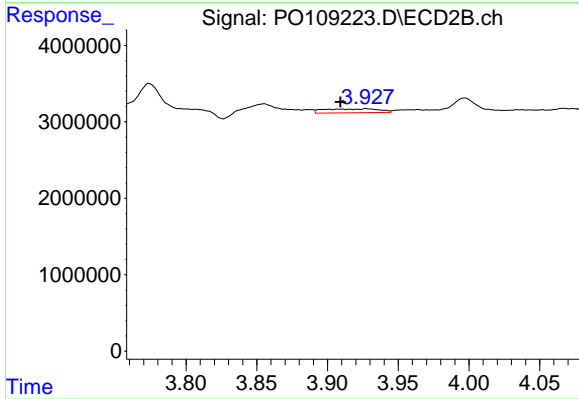
#7 AR-1016-5

R.T.: 5.241 min  
 Delta R.T.: -0.012 min  
 Response: 26709238  
 Conc: 186.07 ng/ml



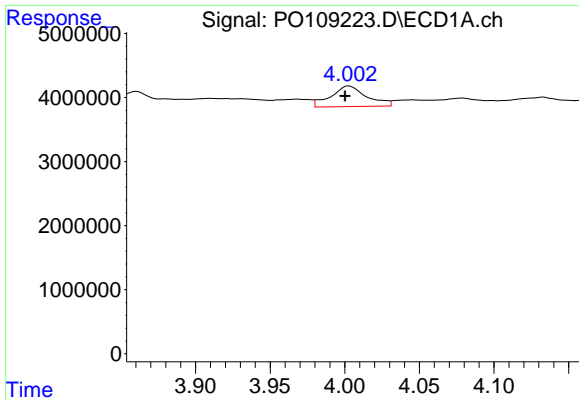
#8 AR-1221-1

R.T.: 3.910 min  
 Delta R.T.: -0.004 min  
 Response: 2758961  
 Conc: 27.56 ng/ml



#8 AR-1221-1

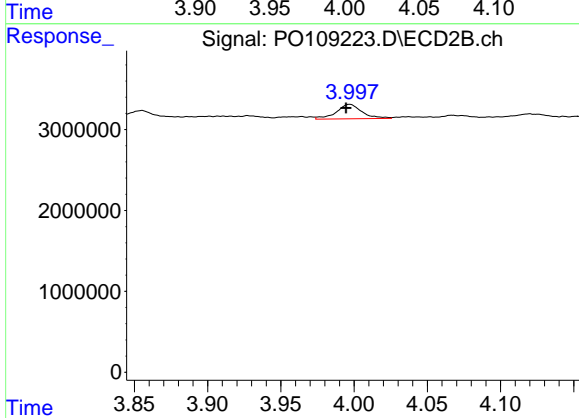
R.T.: 3.927 min  
 Delta R.T.: 0.018 min  
 Response: 1385369  
 Conc: 21.15 ng/ml



#9 AR-1221-2

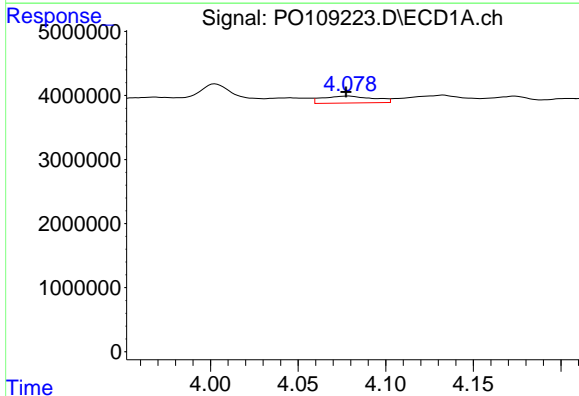
R.T.: 4.003 min  
 Delta R.T.: 0.002 min  
 Response: 5378128  
 Conc: 72.28 ng/ml

Instrument :  
 ECD\_O  
 ClientSampleId :



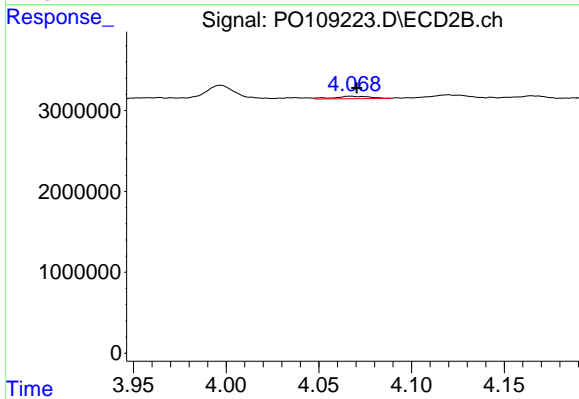
#9 AR-1221-2

R.T.: 3.997 min  
 Delta R.T.: 0.002 min  
 Response: 2161031  
 Conc: 43.76 ng/ml



#10 AR-1221-3

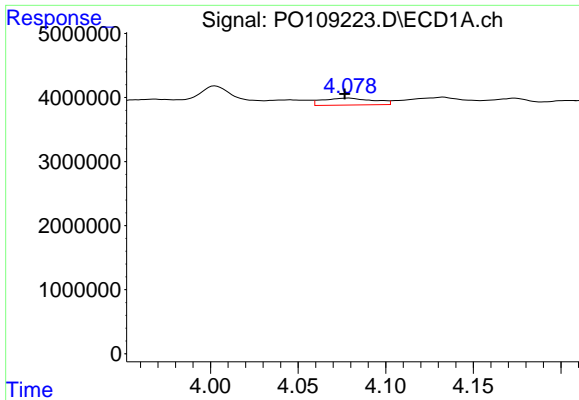
R.T.: 4.079 min  
 Delta R.T.: 0.001 min  
 Response: 2194159  
 Conc: 10.55 ng/ml



#10 AR-1221-3

R.T.: 4.067 min  
 Delta R.T.: -0.003 min  
 Response: 382691  
 Conc: 2.64 ng/ml

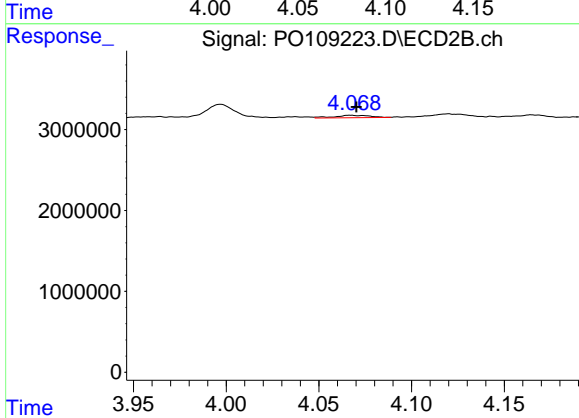




#11 AR-1232-1

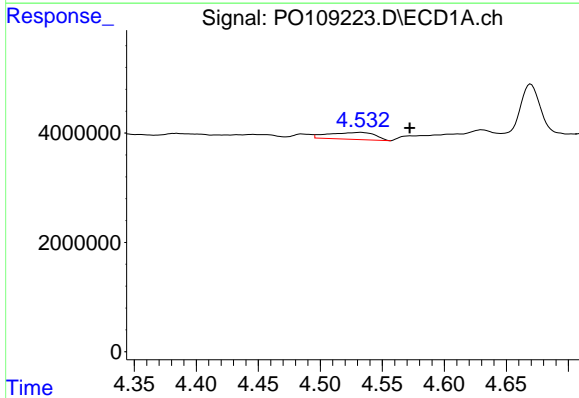
R.T.: 4.079 min  
 Delta R.T.: 0.002 min  
 Response: 2194159  
 Conc: 13.29 ng/ml

Instrument :  
 ECD\_O  
 ClientSampleId :



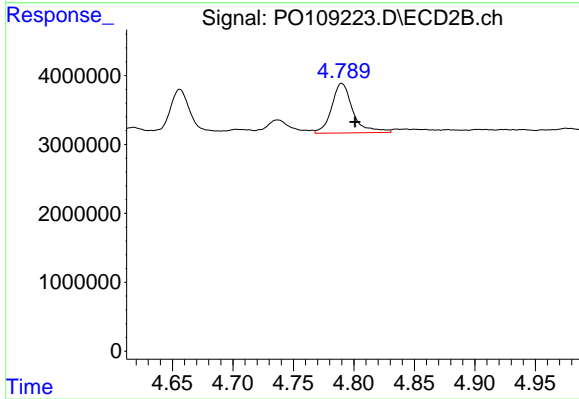
#11 AR-1232-1

R.T.: 4.067 min  
 Delta R.T.: -0.003 min  
 Response: 382691  
 Conc: 3.31 ng/ml



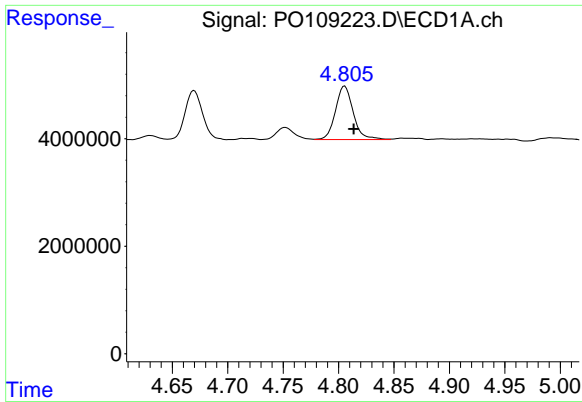
#12 AR-1232-2

R.T.: 4.533 min  
 Delta R.T.: -0.039 min  
 Response: 3302747  
 Conc: 36.30 ng/ml



#12 AR-1232-2

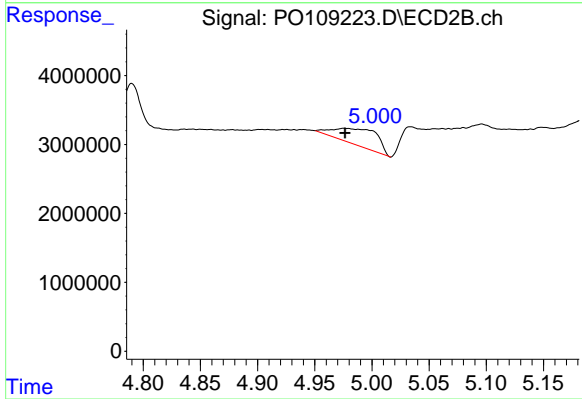
R.T.: 4.790 min  
 Delta R.T.: -0.011 min  
 Response: 8794923  
 Conc: 80.75 ng/ml



#13 AR-1232-3

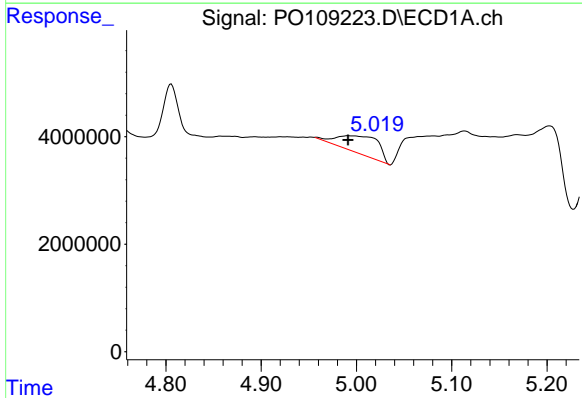
R.T.: 4.806 min  
 Delta R.T.: -0.008 min  
 Response: 11071520  
 Conc: 69.13 ng/ml

Instrument :  
 ECD\_O  
 ClientSampleId :



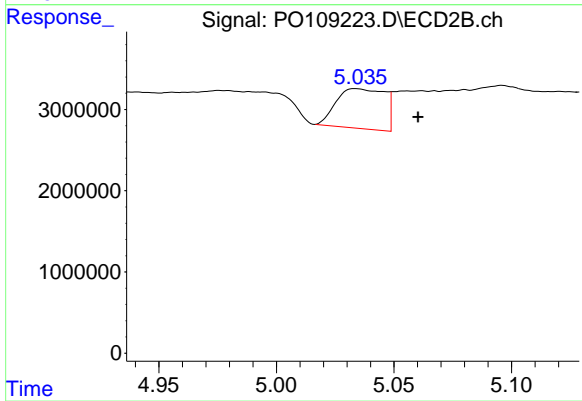
#13 AR-1232-3

R.T.: 4.976 min  
 Delta R.T.: 0.000 min  
 Response: 6408556  
 Conc: 106.87 ng/ml



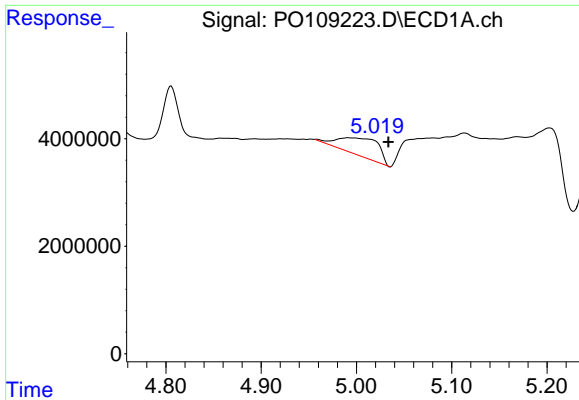
#14 AR-1232-4

R.T.: 4.991 min  
 Delta R.T.: 0.000 min  
 Response: 9930333  
 Conc: 112.84 ng/ml



#14 AR-1232-4

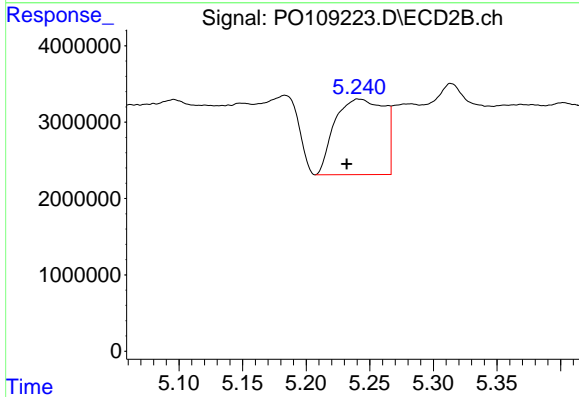
R.T.: 5.034 min  
 Delta R.T.: -0.026 min  
 Response: 7027307  
 Conc: 122.72 ng/ml



#15 AR-1232-5

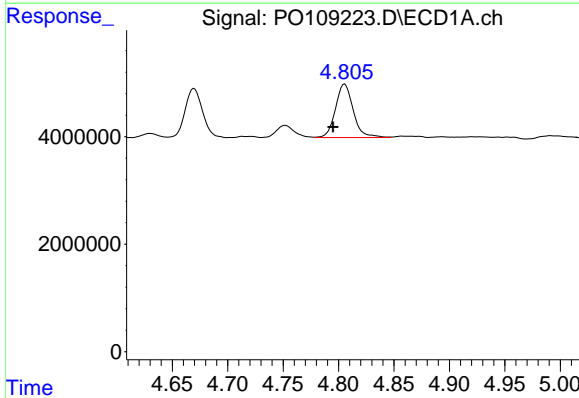
R.T.: 4.991 min  
 Delta R.T.: -0.042 min  
 Response: 9930333  
 Conc: 153.20 ng/ml

Instrument :  
 ECD\_O  
 ClientSampleId :



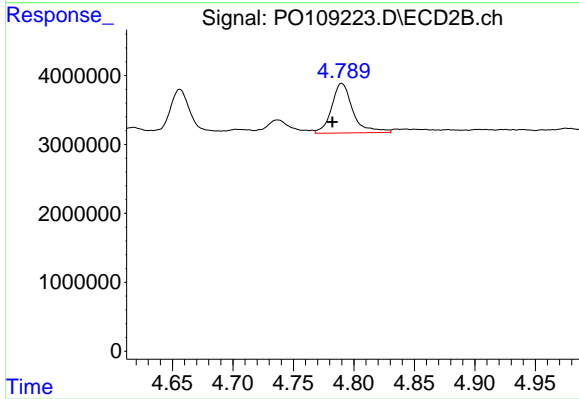
#15 AR-1232-5

R.T.: 5.241 min  
 Delta R.T.: 0.009 min  
 Response: 26709238  
 Conc: 440.22 ng/ml



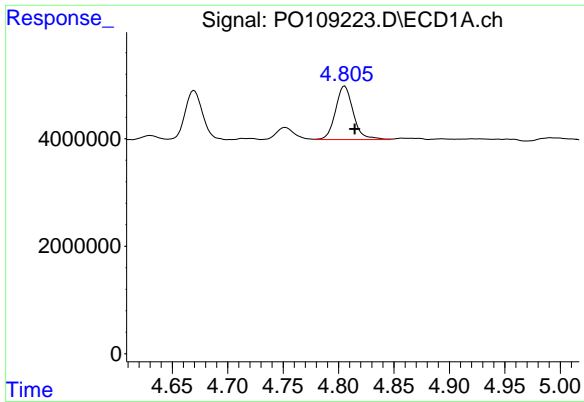
#16 AR-1242-1

R.T.: 4.806 min  
 Delta R.T.: 0.011 min  
 Response: 11071520  
 Conc: 52.12 ng/ml



#16 AR-1242-1

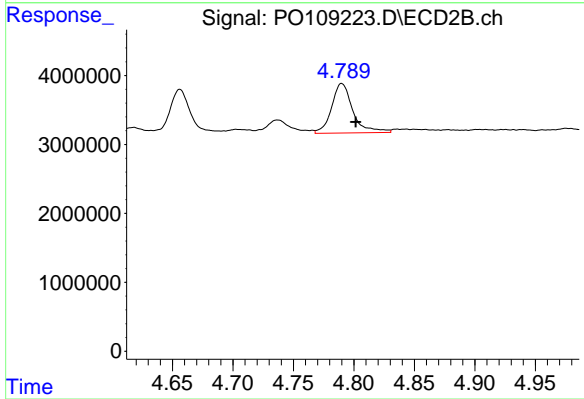
R.T.: 4.790 min  
 Delta R.T.: 0.008 min  
 Response: 8794923  
 Conc: 61.54 ng/ml



#17 AR-1242-2

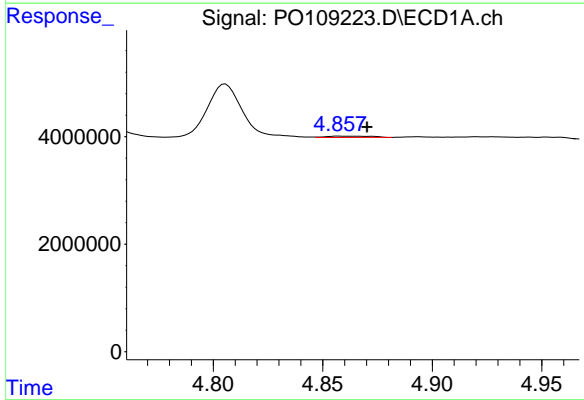
R.T.: 4.806 min  
 Delta R.T.: -0.009 min  
 Response: 11071520  
 Conc: 38.61 ng/ml

Instrument :  
 ECD\_O  
 ClientSampleId :



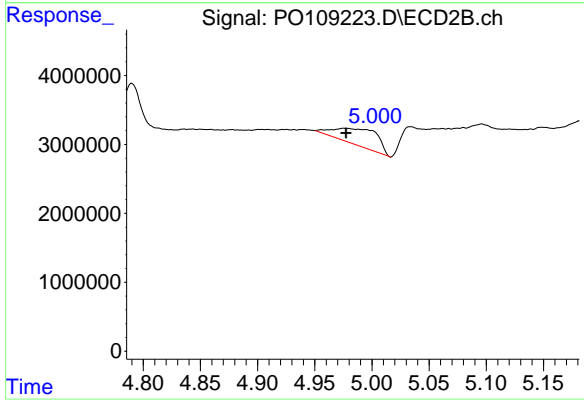
#17 AR-1242-2

R.T.: 4.790 min  
 Delta R.T.: -0.011 min  
 Response: 8794923  
 Conc: 44.60 ng/ml



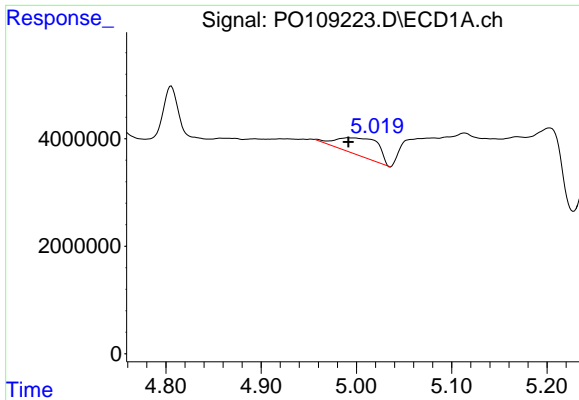
#18 AR-1242-3

R.T.: 4.858 min  
 Delta R.T.: -0.012 min  
 Response: 355336  
 Conc: 1.74 ng/ml



#18 AR-1242-3

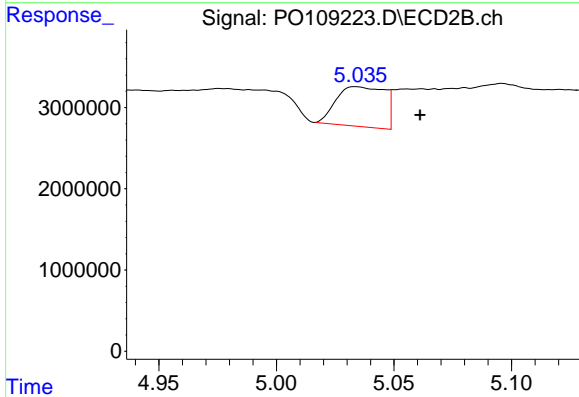
R.T.: 4.976 min  
 Delta R.T.: -0.002 min  
 Response: 6408556  
 Conc: 58.77 ng/ml



#19 AR-1242-4

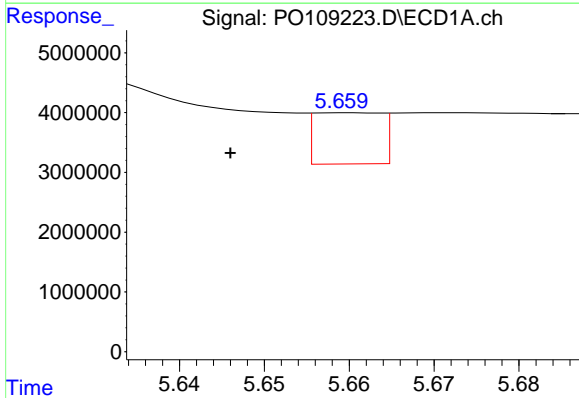
R.T.: 4.991 min  
 Delta R.T.: 0.000 min  
 Response: 9930333  
 Conc: 62.51 ng/ml

Instrument :  
 ECD\_O  
 ClientSampleId :



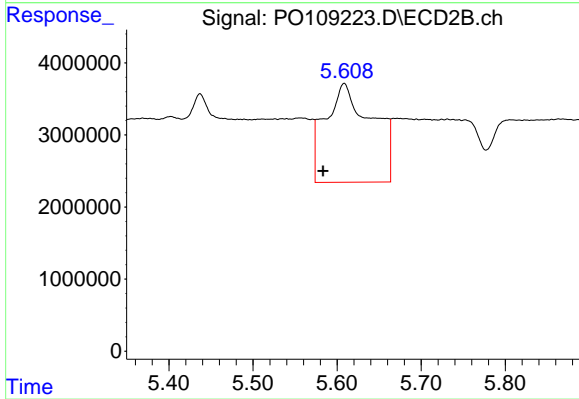
#19 AR-1242-4

R.T.: 5.034 min  
 Delta R.T.: -0.027 min  
 Response: 7027307  
 Conc: 61.84 ng/ml



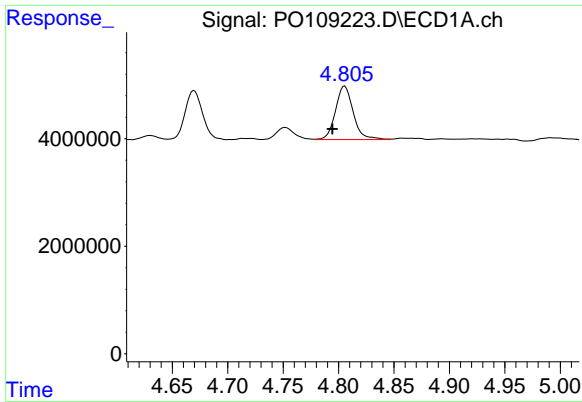
#20 AR-1242-5

R.T.: 5.660 min  
 Delta R.T.: 0.014 min  
 Response: 4713727  
 Conc: 28.22 ng/ml



#20 AR-1242-5

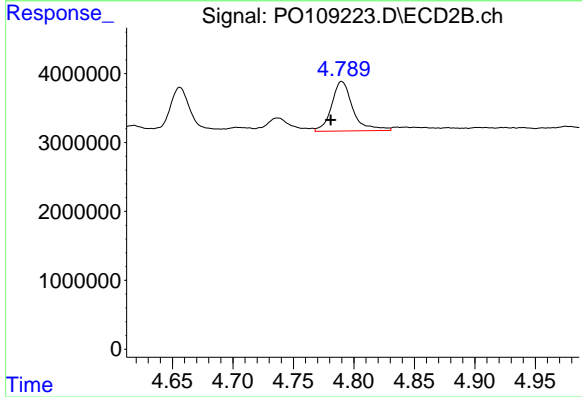
R.T.: 5.609 min  
 Delta R.T.: 0.025 min  
 Response: 53020738  
 Conc: 387.62 ng/ml



#21 AR-1248-1

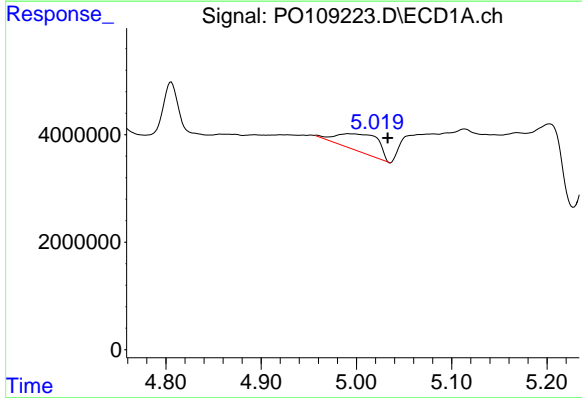
R.T.: 4.806 min  
 Delta R.T.: 0.011 min  
 Response: 11071520  
 Conc: 69.38 ng/ml

Instrument :  
 ECD\_O  
 ClientSampleId :



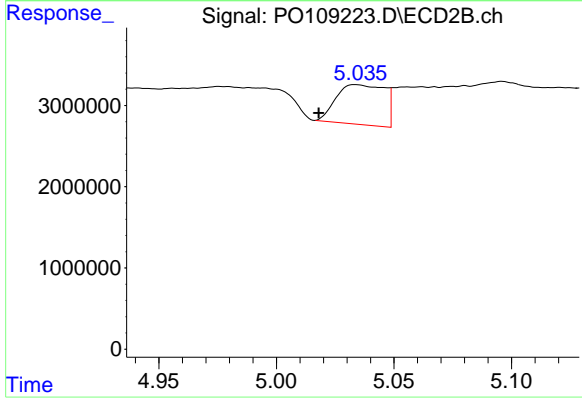
#21 AR-1248-1

R.T.: 4.790 min  
 Delta R.T.: 0.009 min  
 Response: 8794923  
 Conc: 81.95 ng/ml



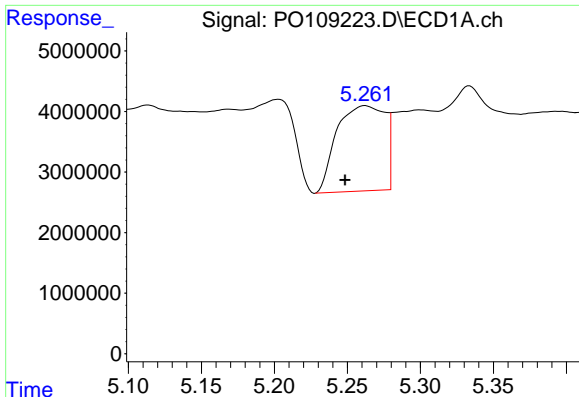
#22 AR-1248-2

R.T.: 4.991 min  
 Delta R.T.: -0.042 min  
 Response: 9930333  
 Conc: 44.43 ng/ml



#22 AR-1248-2

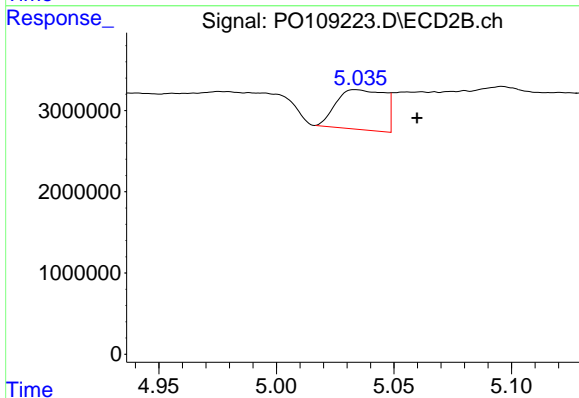
R.T.: 5.034 min  
 Delta R.T.: 0.016 min  
 Response: 7027307  
 Conc: 45.64 ng/ml



#23 AR-1248-3

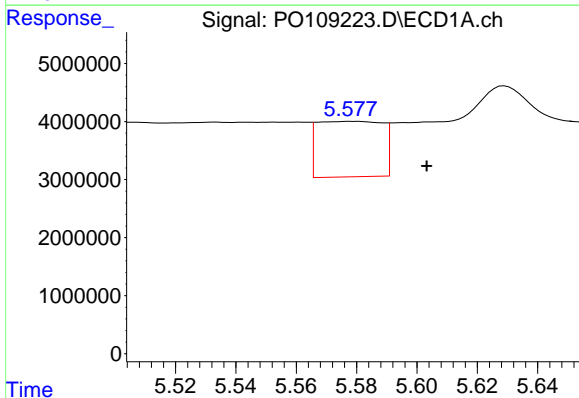
R.T.: 5.262 min  
 Delta R.T.: 0.014 min  
 Response: 32175531  
 Conc: 117.49 ng/ml

Instrument :  
 ECD\_O  
 ClientSampleId :



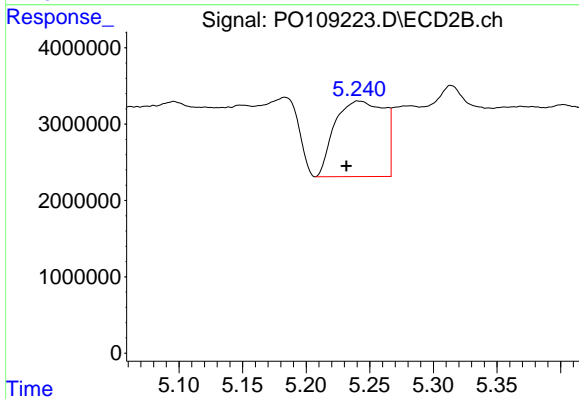
#23 AR-1248-3

R.T.: 5.034 min  
 Delta R.T.: -0.026 min  
 Response: 7027307  
 Conc: 42.49 ng/ml



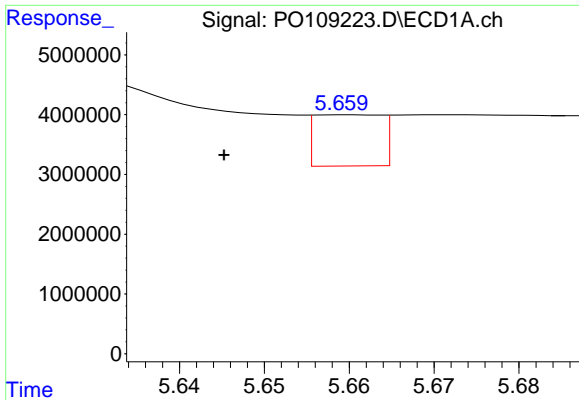
#24 AR-1248-4

R.T.: 5.579 min  
 Delta R.T.: -0.025 min  
 Response: 14305050  
 Conc: 37.20 ng/ml



#24 AR-1248-4

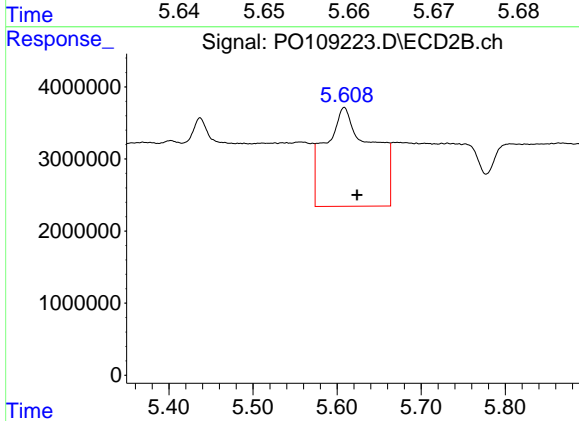
R.T.: 5.241 min  
 Delta R.T.: 0.009 min  
 Response: 26709238  
 Conc: 139.47 ng/ml



#25 AR-1248-5

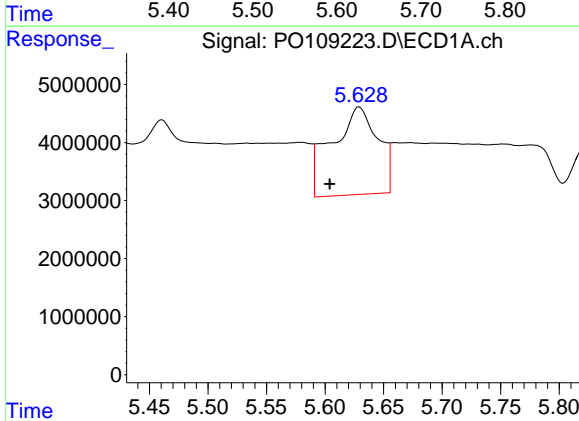
R.T.: 5.660 min  
 Delta R.T.: 0.015 min  
 Response: 4713727  
 Conc: 17.74 ng/ml

Instrument :  
 ECD\_O  
 ClientSampleId :



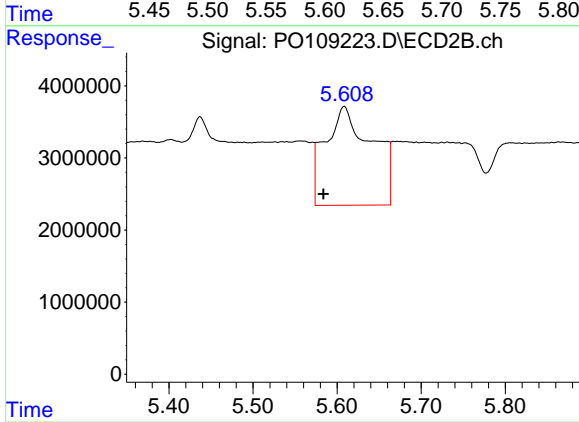
#25 AR-1248-5

R.T.: 5.609 min  
 Delta R.T.: -0.015 min  
 Response: 53020738  
 Conc: 289.40 ng/ml



#26 AR-1254-1

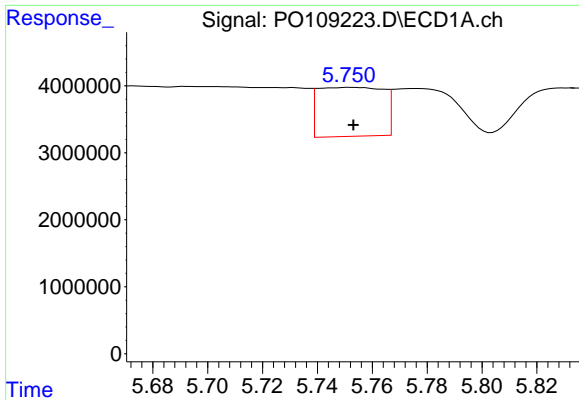
R.T.: 5.629 min  
 Delta R.T.: 0.025 min  
 Response: 41400001  
 Conc: 100.11 ng/ml



#26 AR-1254-1

R.T.: 5.609 min  
 Delta R.T.: 0.025 min  
 Response: 53020738  
 Conc: 188.63 ng/ml

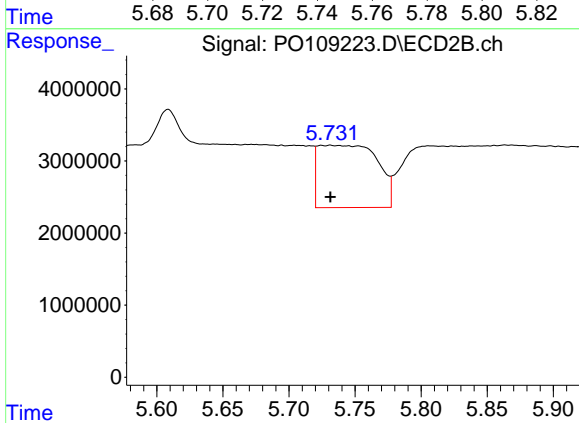




#27 AR-1254-2

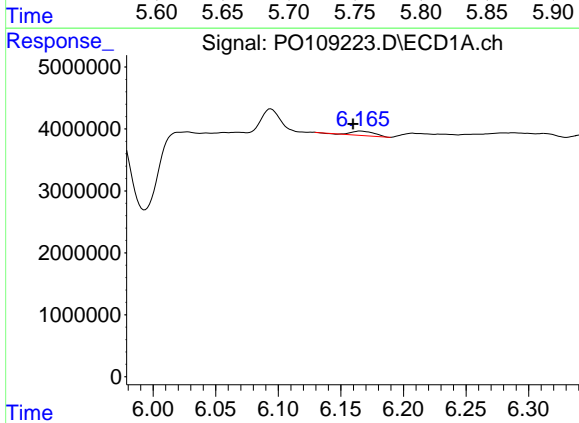
R.T.: 5.752 min  
 Delta R.T.: -0.001 min  
 Response: 12077531  
 Conc: 33.38 ng/ml

Instrument :  
 ECD\_O  
 ClientSampleId :



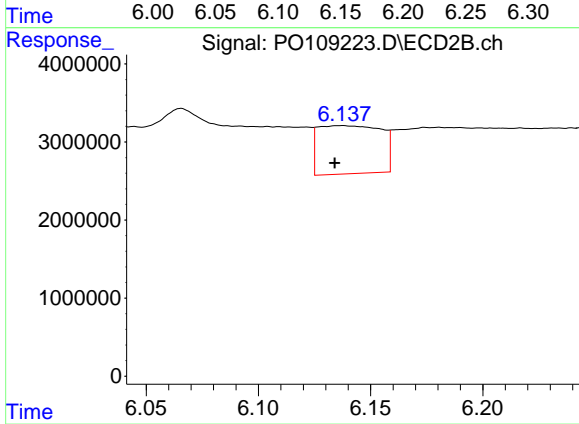
#27 AR-1254-2

R.T.: 5.731 min  
 Delta R.T.: 0.000 min  
 Response: 26880894  
 Conc: 107.41 ng/ml



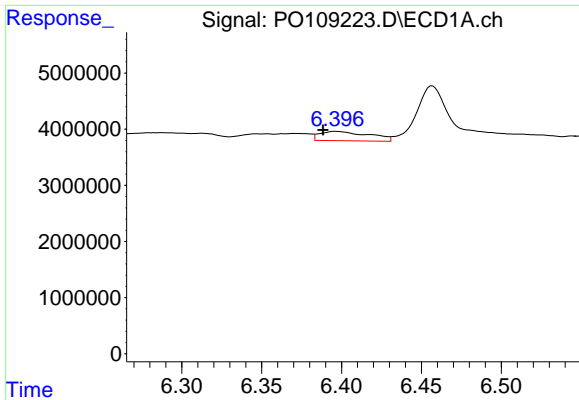
#28 AR-1254-3

R.T.: 6.166 min  
 Delta R.T.: 0.006 min  
 Response: 948100  
 Conc: 1.68 ng/ml



#28 AR-1254-3

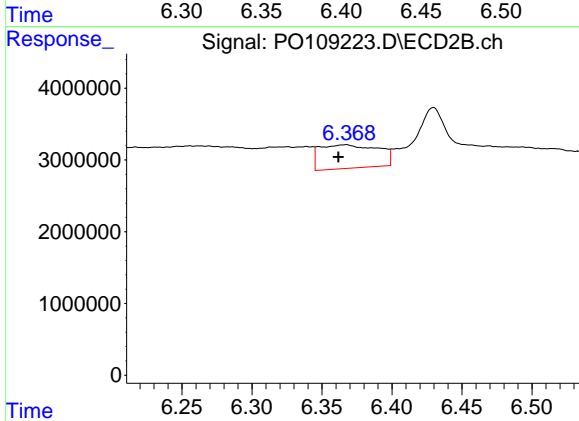
R.T.: 6.137 min  
 Delta R.T.: 0.003 min  
 Response: 12074939  
 Conc: 30.74 ng/ml



#29 AR-1254-4

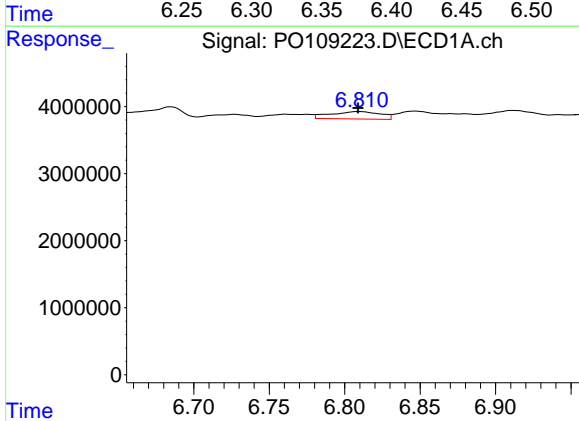
R.T.: 6.397 min  
 Delta R.T.: 0.008 min  
 Response: 3587129  
 Conc: 10.41 ng/ml

Instrument :  
 ECD\_O  
 ClientSampleId :



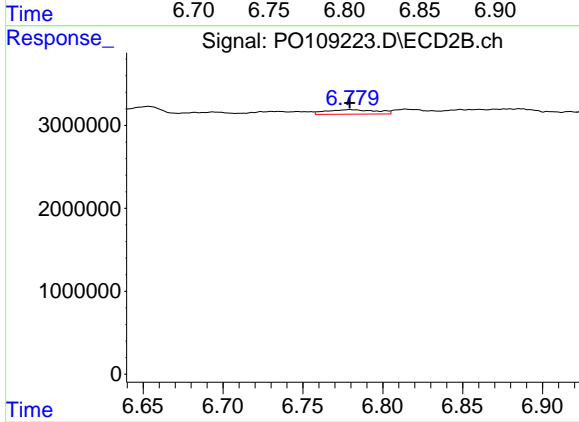
#29 AR-1254-4

R.T.: 6.367 min  
 Delta R.T.: 0.005 min  
 Response: 9524846  
 Conc: 43.23 ng/ml



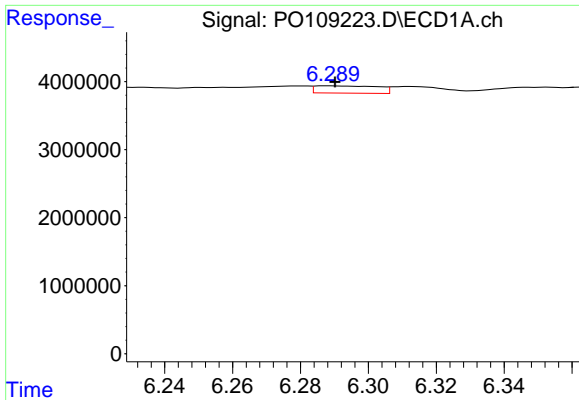
#30 AR-1254-5

R.T.: 6.810 min  
 Delta R.T.: 0.000 min  
 Response: 2531327  
 Conc: 4.93 ng/ml



#30 AR-1254-5

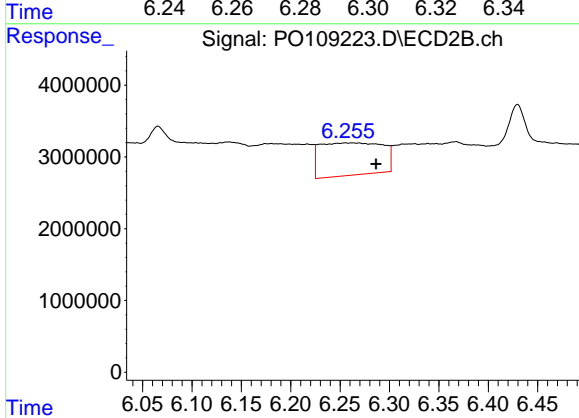
R.T.: 6.779 min  
 Delta R.T.: 0.000 min  
 Response: 1201287  
 Conc: 3.68 ng/ml



#31 AR-1260-1

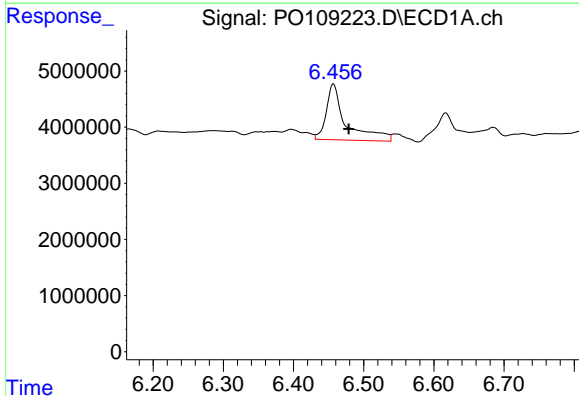
R.T.: 6.288 min  
 Delta R.T.: -0.002 min  
 Response: 1375982  
 Conc: 3.61 ng/ml

Instrument :  
 ECD\_O  
 ClientSampleId :



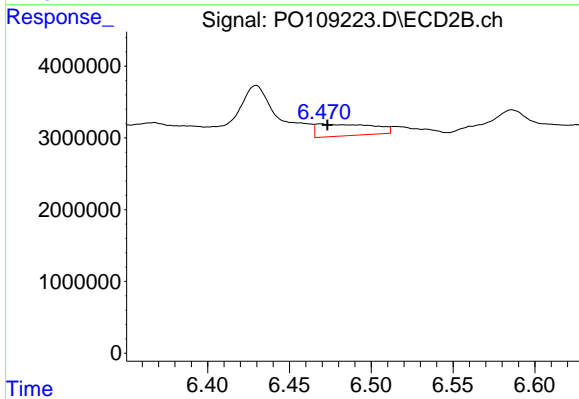
#31 AR-1260-1

R.T.: 6.255 min  
 Delta R.T.: -0.031 min  
 Response: 19902643  
 Conc: 78.96 ng/ml



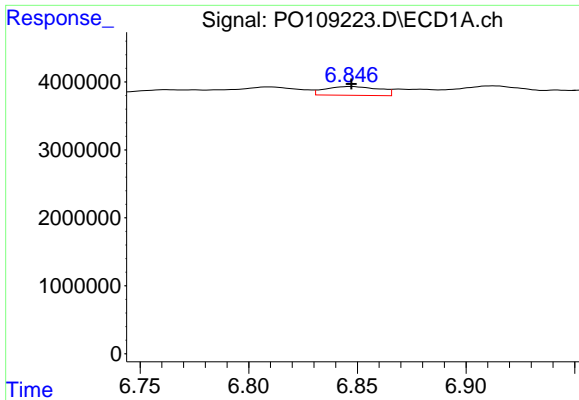
#32 AR-1260-2

R.T.: 6.457 min  
 Delta R.T.: -0.022 min  
 Response: 19353022  
 Conc: 41.21 ng/ml



#32 AR-1260-2

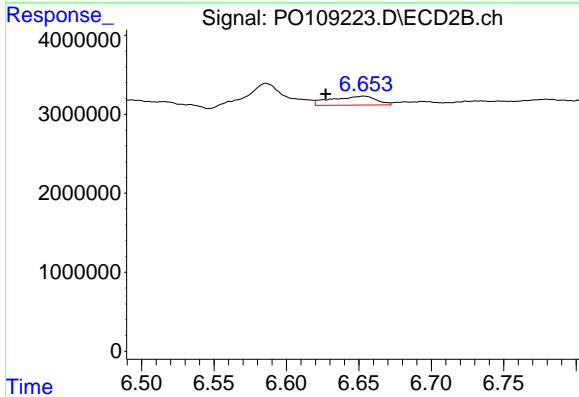
R.T.: 6.469 min  
 Delta R.T.: -0.004 min  
 Response: 3945287  
 Conc: 13.12 ng/ml



#33 AR-1260-3

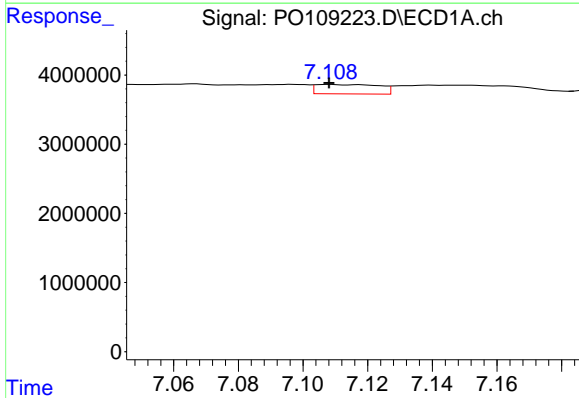
R.T.: 6.847 min  
 Delta R.T.: 0.000 min  
 Response: 2237692  
 Conc: 5.71 ng/ml

Instrument :  
 ECD\_O  
 ClientSampleId :



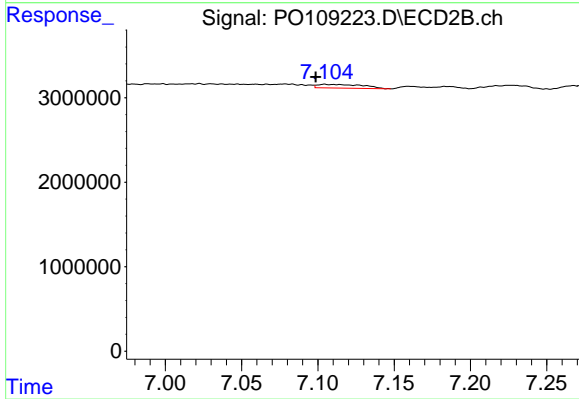
#33 AR-1260-3

R.T.: 6.653 min  
 Delta R.T.: 0.026 min  
 Response: 2419427  
 Conc: 8.69 ng/ml



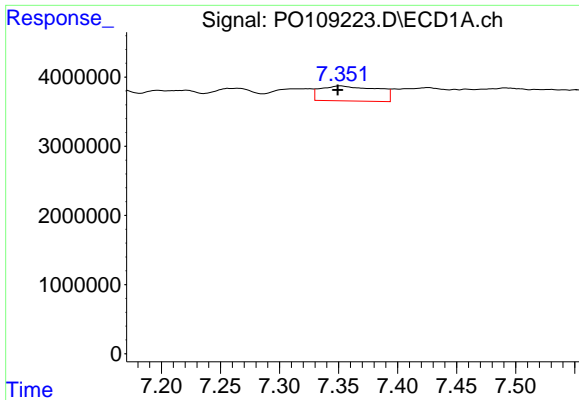
#34 AR-1260-4

R.T.: 7.108 min  
 Delta R.T.: 0.000 min  
 Response: 1852556  
 Conc: 5.18 ng/ml



#34 AR-1260-4

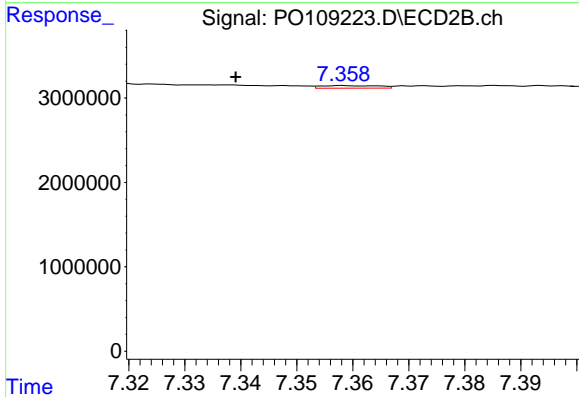
R.T.: 7.105 min  
 Delta R.T.: 0.006 min  
 Response: 896445  
 Conc: 3.97 ng/ml



#35 AR-1260-5

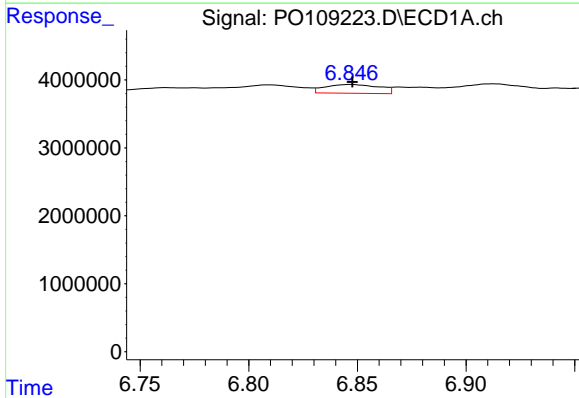
R.T.: 7.352 min  
 Delta R.T.: 0.002 min  
 Response: 7293933  
 Conc: 8.74 ng/ml

Instrument :  
 ECD\_O  
 ClientSampleId :



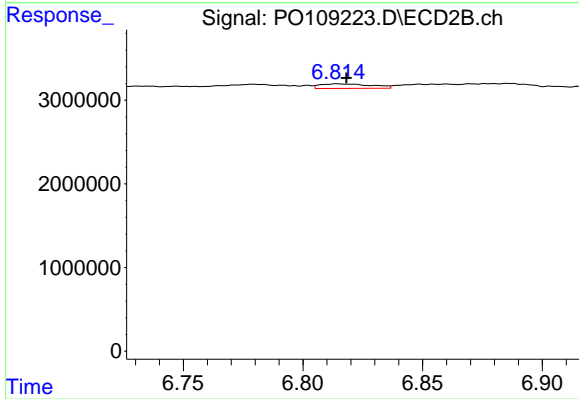
#35 AR-1260-5

R.T.: 7.358 min  
 Delta R.T.: 0.019 min  
 Response: 221475  
 Conc: 0.44 ng/ml



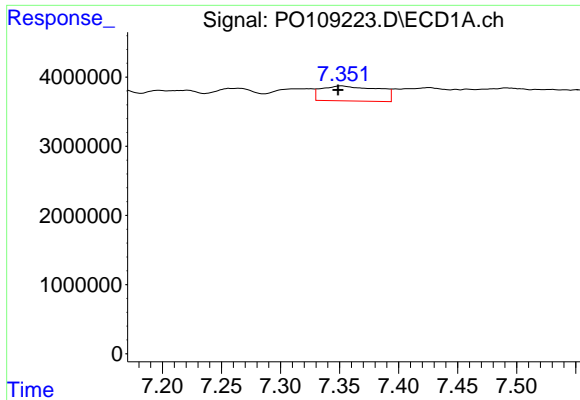
#36 AR-1262-1

R.T.: 6.847 min  
 Delta R.T.: 0.000 min  
 Response: 2237692  
 Conc: 4.19 ng/ml



#36 AR-1262-1

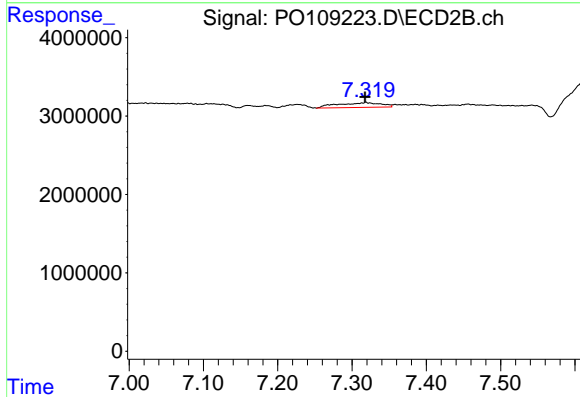
R.T.: 6.814 min  
 Delta R.T.: -0.004 min  
 Response: 817165  
 Conc: 2.40 ng/ml



#37 AR-1262-2

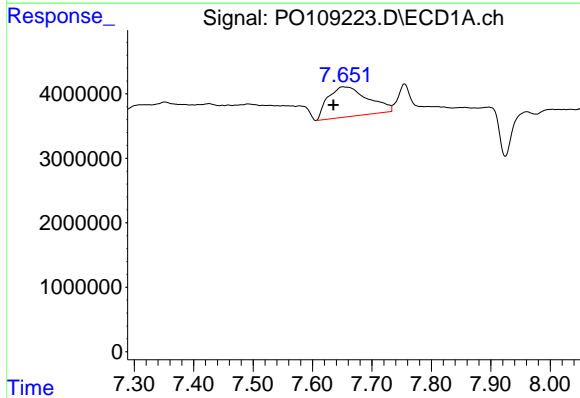
R.T.: 7.352 min  
 Delta R.T.: 0.003 min  
 Response: 7293933  
 Conc: 7.93 ng/ml

Instrument :  
 ECD\_O  
 ClientSampleId :



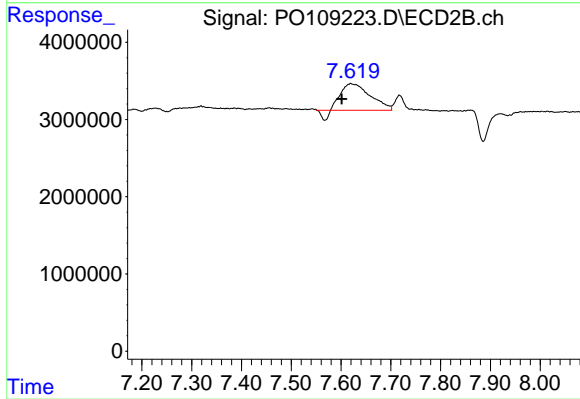
#37 AR-1262-2

R.T.: 7.319 min  
 Delta R.T.: 0.001 min  
 Response: 2444169  
 Conc: 4.41 ng/ml



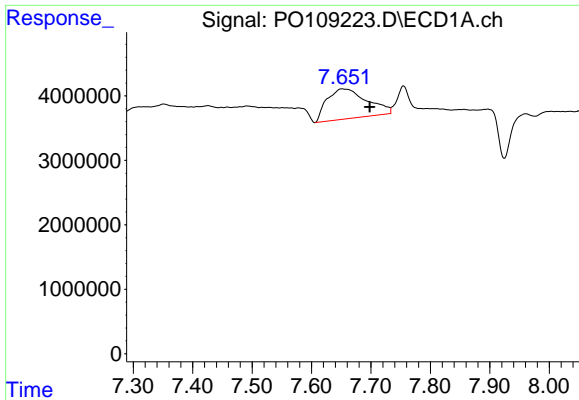
#38 AR-1262-3

R.T.: 7.651 min  
 Delta R.T.: 0.016 min  
 Response: 21801270  
 Conc: 59.80 ng/ml



#38 AR-1262-3

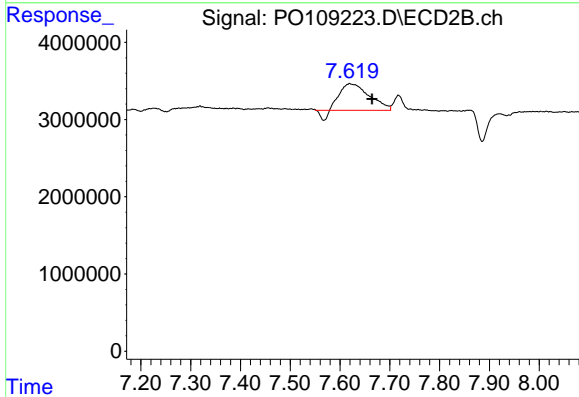
R.T.: 7.620 min  
 Delta R.T.: 0.018 min  
 Response: 13409790  
 Conc: 62.53 ng/ml



#39 AR-1262-4

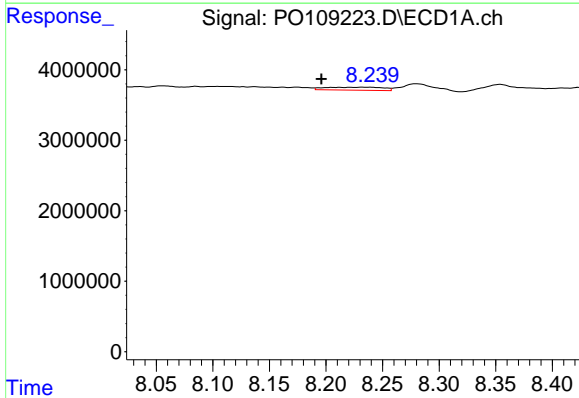
R.T.: 7.651 min  
 Delta R.T.: -0.047 min  
 Response: 21801270  
 Conc: 31.71 ng/ml

Instrument :  
 ECD\_O  
 ClientSampleId :



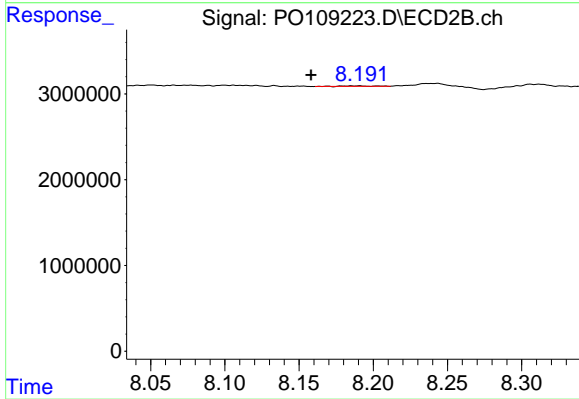
#39 AR-1262-4

R.T.: 7.620 min  
 Delta R.T.: -0.045 min  
 Response: 13409790  
 Conc: 34.22 ng/ml



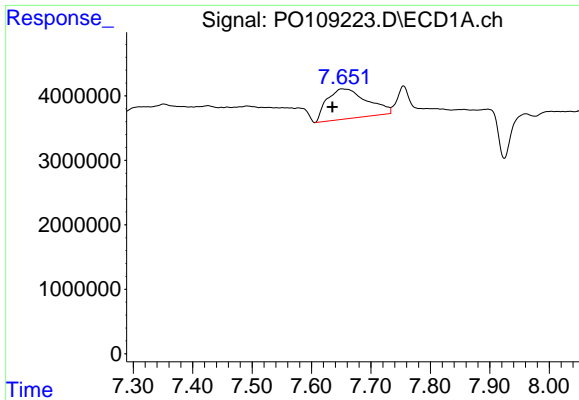
#40 AR-1262-5

R.T.: 8.237 min  
 Delta R.T.: 0.041 min  
 Response: 1526192  
 Conc: 5.05 ng/ml



#40 AR-1262-5

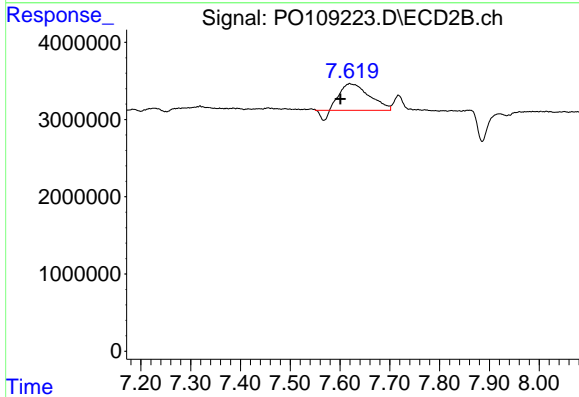
R.T.: 8.189 min  
 Delta R.T.: 0.031 min  
 Response: 91060  
 Conc: 0.57 ng/ml



#41 AR-1268-1

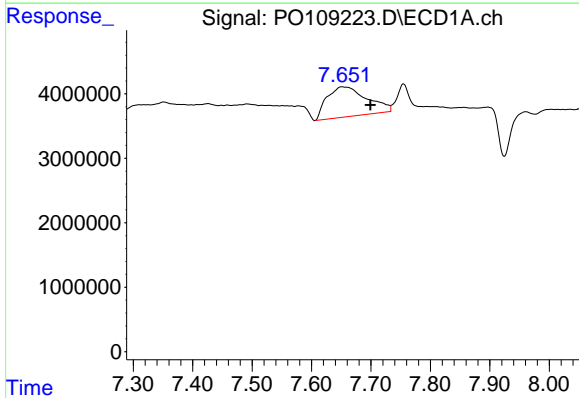
R.T.: 7.651 min  
 Delta R.T.: 0.016 min  
 Response: 21801270  
 Conc: 20.48 ng/ml

Instrument :  
 ECD\_O  
 ClientSampleId :



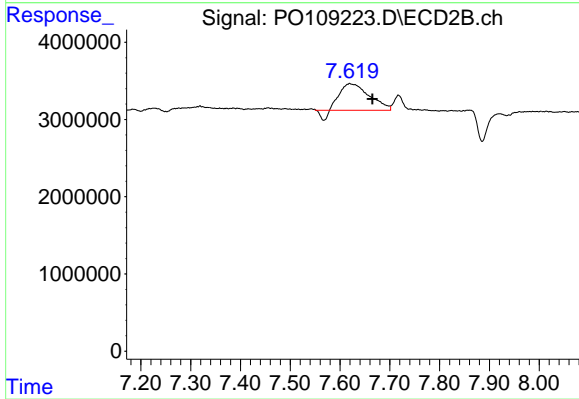
#41 AR-1268-1

R.T.: 7.620 min  
 Delta R.T.: 0.019 min  
 Response: 13409790  
 Conc: 21.30 ng/ml



#42 AR-1268-2

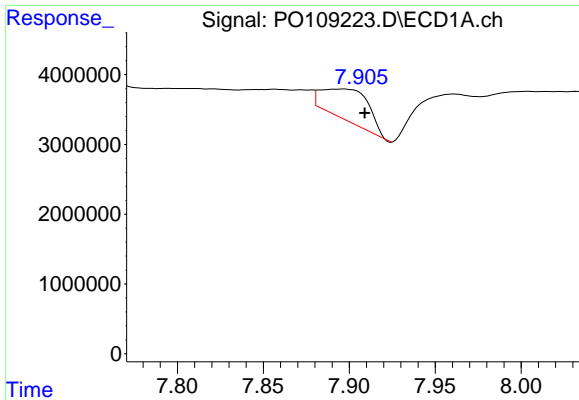
R.T.: 7.651 min  
 Delta R.T.: -0.048 min  
 Response: 21801270  
 Conc: 22.50 ng/ml



#42 AR-1268-2

R.T.: 7.620 min  
 Delta R.T.: -0.046 min  
 Response: 13409790  
 Conc: 23.48 ng/ml

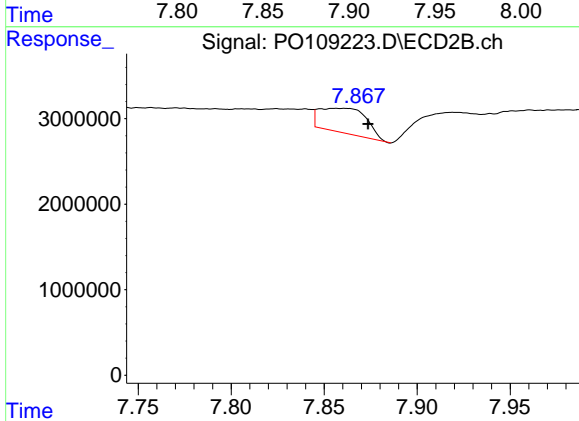




#43 AR-1268-3

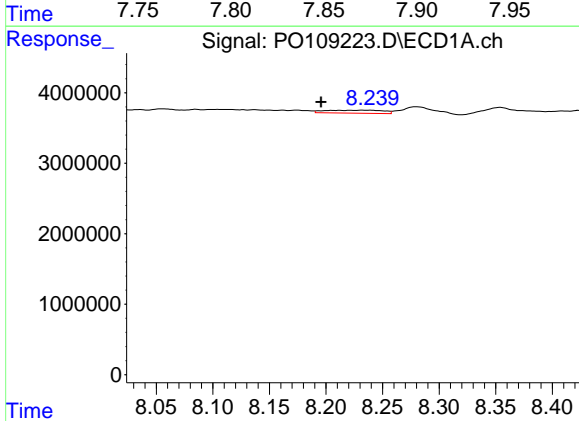
R.T.: 7.897 min  
 Delta R.T.: -0.012 min  
 Response: 8493904  
 Conc: 10.54 ng/ml

Instrument :  
 ECD\_O  
 ClientSampleId :



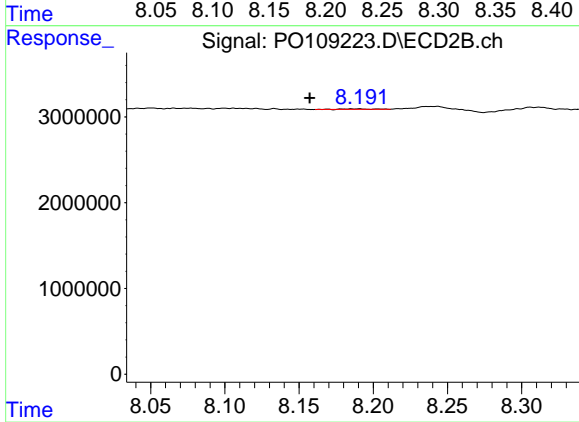
#43 AR-1268-3

R.T.: 7.856 min  
 Delta R.T.: -0.017 min  
 Response: 5086095  
 Conc: 11.04 ng/ml



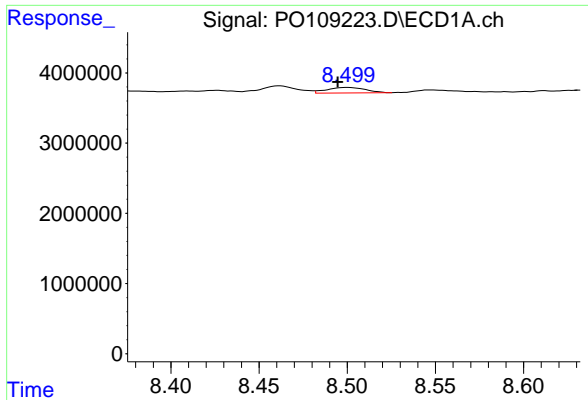
#44 AR-1268-4

R.T.: 8.237 min  
 Delta R.T.: 0.041 min  
 Response: 1526192  
 Conc: 4.46 ng/ml



#44 AR-1268-4

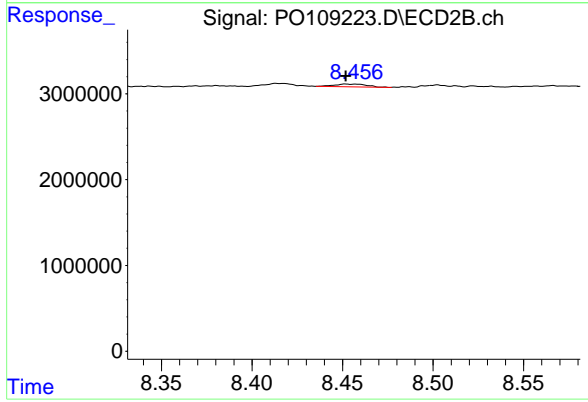
R.T.: 8.189 min  
 Delta R.T.: 0.032 min  
 Response: 91060  
 Conc: 0.50 ng/ml



#45 AR-1268-5

R.T.: 8.500 min  
 Delta R.T.: 0.006 min  
 Response: 1195265  
 Conc: 0.50 ng/ml

Instrument :  
 ECD\_O  
 ClientSampleId :



#45 AR-1268-5

R.T.: 8.454 min  
 Delta R.T.: 0.003 min  
 Response: 398900  
 Conc: 0.33 ng/ml