

Data Path : Z:\pestpcbsrv\HPCHEM1\ECD_0\Data\P0013024\
 Data File : P0101372.D
 Signal(s) : Signal #1: ECD1A.ch Signal #2: ECD2B.ch
 Acq On : 30 Jan 2024 15:19
 Operator : YP/AJ
 Sample : P1274-06
 Misc :
 ALS Vial : 14 Sample Multiplier: 1

Instrument :
 ECD_0
 ClientSampleId :
 I.BLK

Integration File signal 1: autoint1.e
 Integration File signal 2: autoint2.e
 Quant Time: Jan 30 16:02:47 2024
 Quant Method : Z:\pestpcbsrv\HPCHEM1\ECD_0\methods\P0012424.M
 Quant Title : GC EXTRACTABLES
 QLast Update : Wed Jan 24 04:51:39 2024
 Response via : Initial Calibration
 Integrator: ChemStation

Volume Inj. : 2 µl
 Signal #1 Phase : ZB-MR1 Signal #2 Phase: ZB-MR2
 Signal #1 Info : 30Mx0.32mmx 0.50µ Signal #2 Info : 30M x 0.32mm x 0.25µm

Compound	RT#1	RT#2	Resp#1	Resp#2	ng/ml	ng/ml
System Monitoring Compounds						
1) SA Tetrachlo...	4.331	3.630	63298680	37312072	16.490	14.438
2) SA Decachlor...	10.057	8.674	44893299	69861002	19.267	36.866 #
Target Compounds						
3) L1 AR-1016-1	5.481	4.723	677079	459566	6.926	6.216
4) L1 AR-1016-2	5.523	4.739	1680067	646292	12.214	6.557 #
5) L1 AR-1016-3	5.583	4.918	919572	364616	10.251	6.646 #
6) L1 AR-1016-4	5.686	4.963	505192	2350202	7.068	46.247 #
7) L1 AR-1016-5	5.976	5.176	1770112	1373141	22.394	21.033
8) L2 AR-1221-1	4.552	3.859	3734830	768600	89.201	26.836 #
9) L2 AR-1221-2	4.635	3.935	2171883	1156727	68.455	51.720
10) L2 AR-1221-3	4.713	4.006	12384169	7298106	139.862	114.818
11) L3 AR-1232-1	4.713	4.006	12384169	7298106	163.795	133.764
12) L3 AR-1232-2	5.230	4.739	838915	646292	18.461	13.441 #
13) L3 AR-1232-3	5.523	4.918	1680067	364616	25.099	13.906 #
14) L3 AR-1232-4	5.686	5.002	505192	424082	14.112	15.229
15) L3 AR-1232-5	5.772	5.176	3604357	1373141	105.648	44.904 #
16) L4 AR-1242-1	5.481	4.723	677079	459566	8.751	7.811
17) L4 AR-1242-2	5.523	4.739	1680067	646292	15.514	8.334 #
18) L4 AR-1242-3	5.583	4.918	919572	364616	12.937	8.411 #
19) L4 AR-1242-4	5.686	5.002	505192	424082	8.870	8.520
20) L4 AR-1242-5	6.422	5.530	4574077	5207776	85.236	98.310
21) L5 AR-1248-1	5.481	4.723	677079	459566	11.681	10.271
22) L5 AR-1248-2	5.772	4.963	3604357	2350202	35.790	33.425
23) L5 AR-1248-3	5.976	5.002	1770112	424082	17.084	5.830 #
24) L5 AR-1248-4	6.381	5.176	3458101	1373141	38.080	16.152 #
25) L5 AR-1248-5	6.422	5.530f	4574077	5207776	51.281	76.059 #
26) L6 AR-1254-1	6.355	5.530	8257364	5207776	69.401	41.859 #
27) L6 AR-1254-2	6.574	5.678	9507627	4506734	55.822	40.261 #
28) L6 AR-1254-3	6.940	6.086	10039267	7289641	61.132	43.810 #
29) L6 AR-1254-4	7.230	6.318	6939306	2763087	69.426	32.394 #
30) L6 AR-1254-5	7.647	6.734	13993708	3191551	119.065	23.554 #
31) L7 AR-1260-1	7.105	6.217	8285123	6948560	58.095	56.312
32) L7 AR-1260-2	7.364	6.404	23532944	4436467	160.653	32.447 #
33) L7 AR-1260-3	7.722	6.560	5346571	3606234	45.789	28.111 #
34) L7 AR-1260-4	7.950	7.033	3818769	4817607	32.437	46.615 #
35) L7 AR-1260-5	8.267	7.268	4611990	8583071	21.032	40.889 #
36) L8 AR-1262-1	7.647	6.734	13993708	3191551	125.219	39.369 #
37) L8 AR-1262-2	8.267	7.033	4611990	4817607	16.953	32.377 #
38) L8 AR-1262-3	8.560	7.547	5246185	28896639	26.971	281.302 #
39) L8 AR-1262-4	8.657	7.603	70378165	33729946	453.274	172.732 #
40) L8 AR-1262-5	9.340	8.155	119.4E6	17340170	1271.100	206.923 #
41) L9 AR-1268-1	8.560	7.547	5246185	28896639	16.543	103.373 #

Data Path : Z:\pestpcbsrv\HPCHEM1\ECD_0\Data\P0013024\
 Data File : P0101372.D
 Signal(s) : Signal #1: ECD1A.ch Signal #2: ECD2B.ch
 Acq On : 30 Jan 2024 15:19
 Operator : YP/AJ
 Sample : P1274-06
 Misc :
 ALS Vial : 14 Sample Multiplier: 1

Instrument :
 ECD_0
 ClientSampleId :
 I.BLK

Integration File signal 1: autoint1.e
 Integration File signal 2: autoint2.e
 Quant Time: Jan 30 16:02:47 2024
 Quant Method : Z:\pestpcbsrv\HPCHEM1\ECD_0\methods\P0012424.M
 Quant Title : GC EXTRACTABLES
 QLast Update : Wed Jan 24 04:51:39 2024
 Response via : Initial Calibration
 Integrator: ChemStation

Volume Inj. : 2 µl
 Signal #1 Phase : ZB-MR1 Signal #2 Phase: ZB-MR2
 Signal #1 Info : 30Mx0.32mmx 0.50µ Signal #2 Info : 30M x 0.32mm x 0.25µm

	Compound	RT#1	RT#2	Resp#1	Resp#2	ng/ml	ng/ml
42)	L9 AR-1268-2	8.657	7.603	70378165	33729946	243.692	131.886 #
43)	L9 AR-1268-3	8.887	7.837	82085391	65529621	318.589	281.791
44)	L9 AR-1268-4	9.340	8.155	119.4E6	17340170	1299.316	204.050 #
45)	L9 AR-1268-5	9.717	8.441	5422311	9475253	6.767	14.401 #

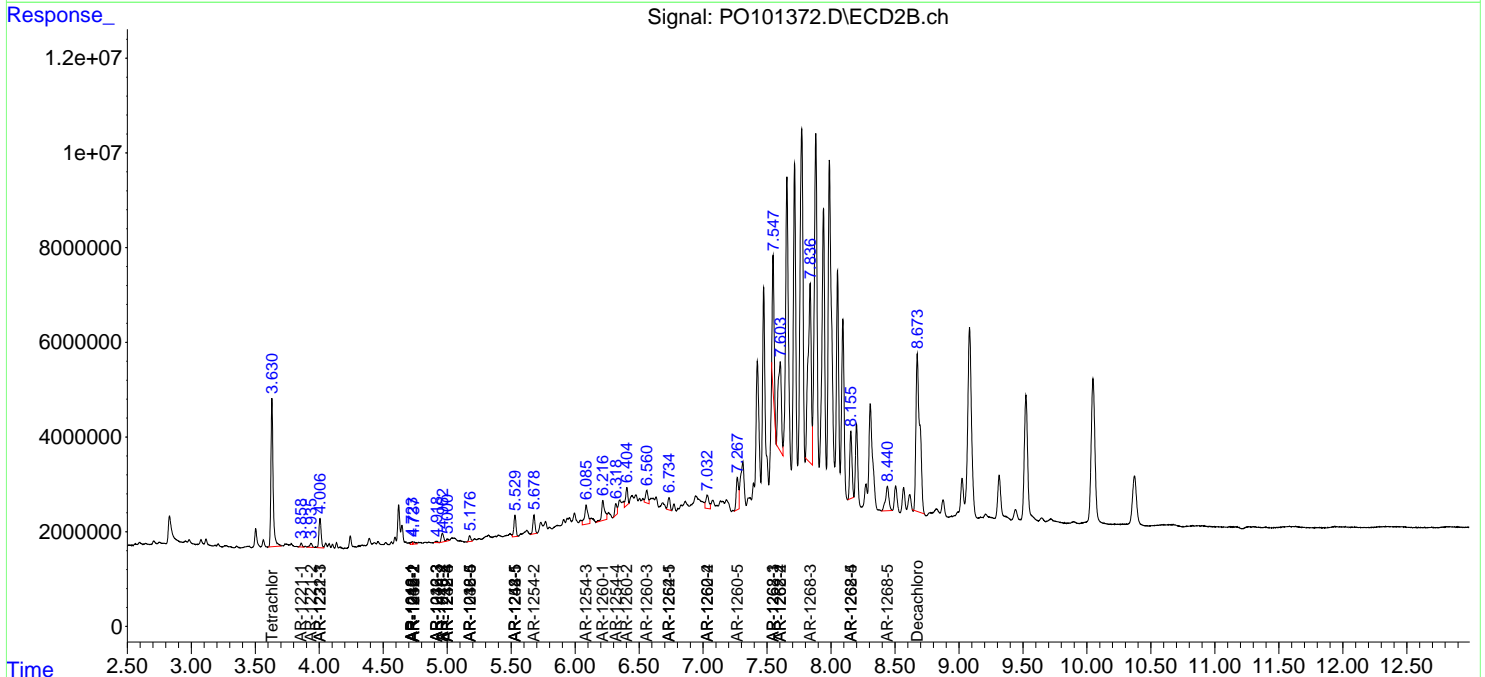
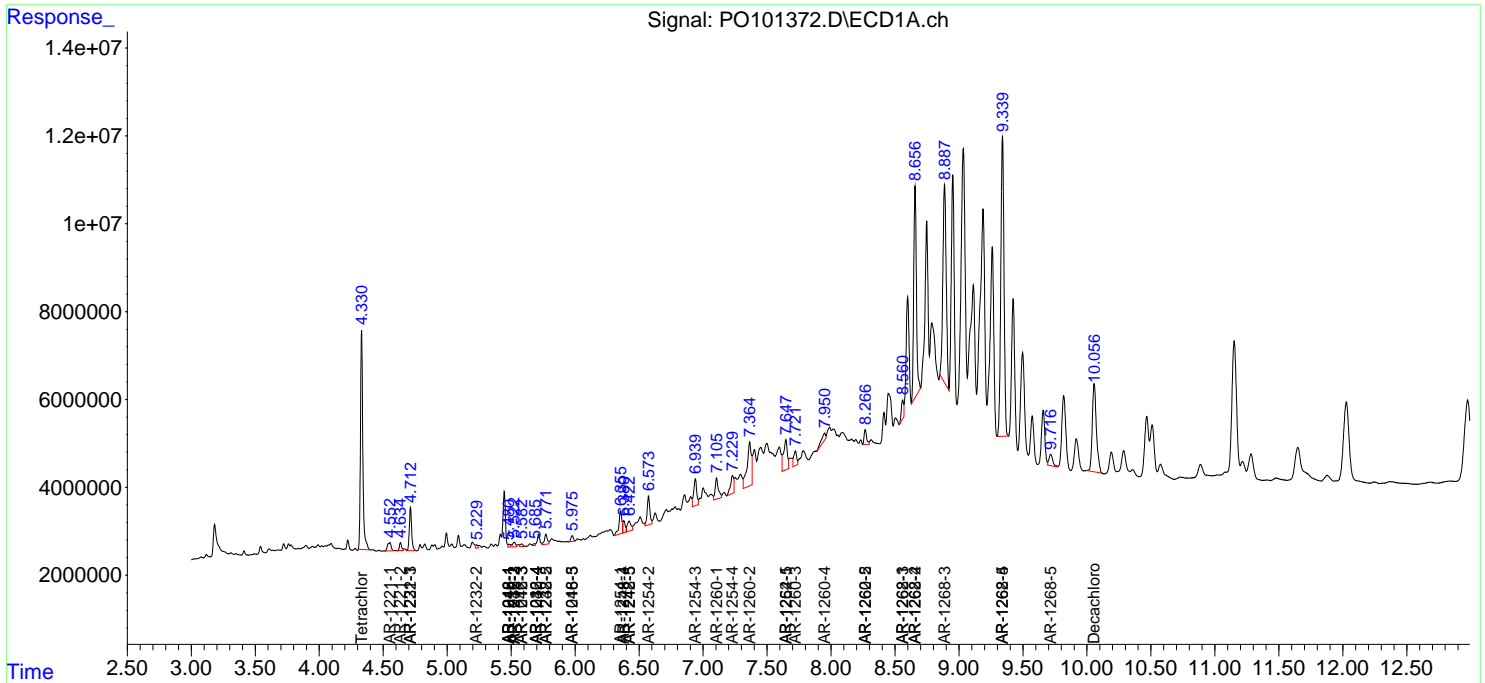
(f)=RT Delta > 1/2 Window (#)=Amounts differ by > 25% (m)=manual int.

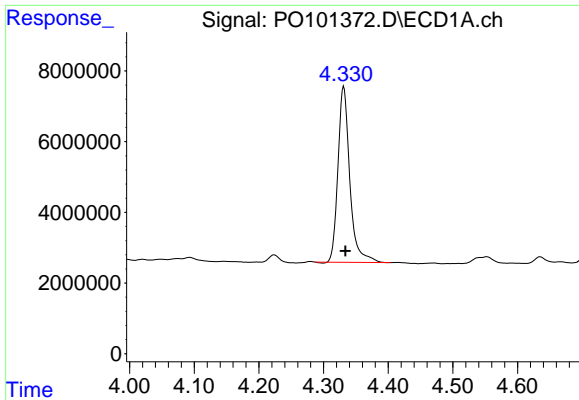
Data Path : Z:\pestpcbsrv\HPCHEM1\ECD_O\Data\PO013024\
 Data File : PO101372.D
 Signal(s) : Signal #1: ECD1A.ch Signal #2: ECD2B.ch
 Acq On : 30 Jan 2024 15:19
 Operator : YP/AJ
 Sample : P1274-06
 Misc :
 ALS Vial : 14 Sample Multiplier: 1

Instrument :
 ECD_O
 ClientSampleId :
 I.BLK

Integration File signal 1: autoint1.e
 Integration File signal 2: autoint2.e
 Quant Time: Jan 30 16:02:47 2024
 Quant Method : Z:\pestpcbsrv\HPCHEM1\ECD_O\methods\PO012424.M
 Quant Title : GC EXTRACTABLES
 QLast Update : Wed Jan 24 04:51:39 2024
 Response via : Initial Calibration
 Integrator: ChemStation

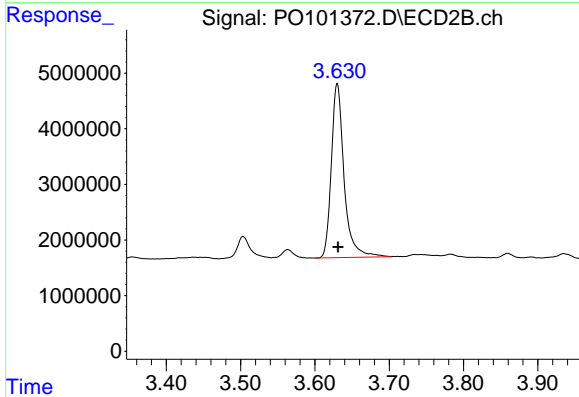
Volume Inj. : 2 µl
 Signal #1 Phase : ZB-MR1 Signal #2 Phase: ZB-MR2
 Signal #1 Info : 30Mx0.32mmx 0.50µ Signal #2 Info : 30M x 0.32mm x 0.25µm



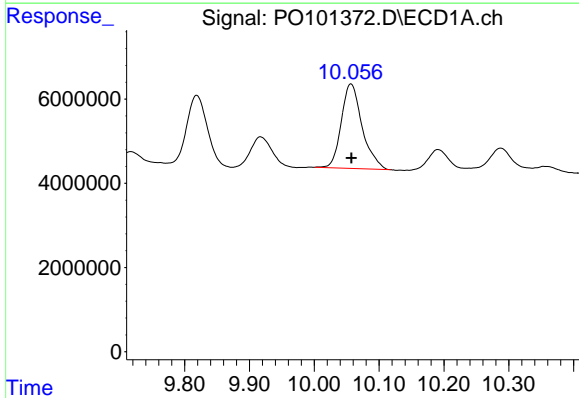


#1 Tetrachloro-m-xylene
 R.T.: 4.331 min
 Delta R.T.: -0.003 min
 Response: 63298680
 Conc: 16.49 ng/ml

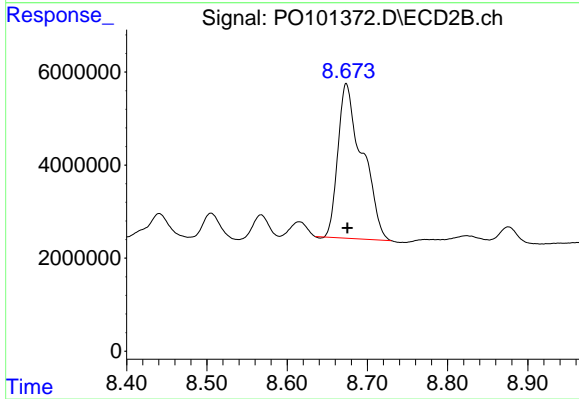
Instrument :
 ECD_O
 ClientSampleId :
 I.BLK



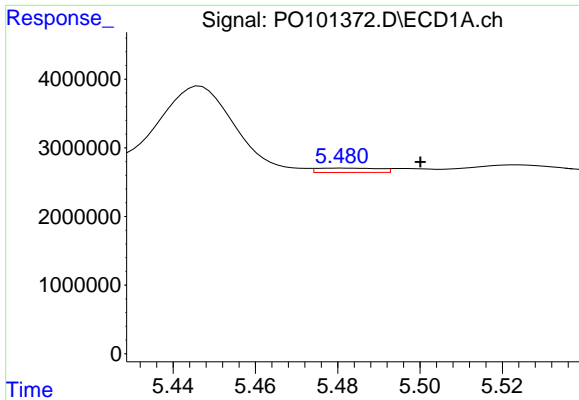
#1 Tetrachloro-m-xylene
 R.T.: 3.630 min
 Delta R.T.: -0.001 min
 Response: 37312072
 Conc: 14.44 ng/ml



#2 Decachlorobiphenyl
 R.T.: 10.057 min
 Delta R.T.: 0.000 min
 Response: 44893299
 Conc: 19.27 ng/ml



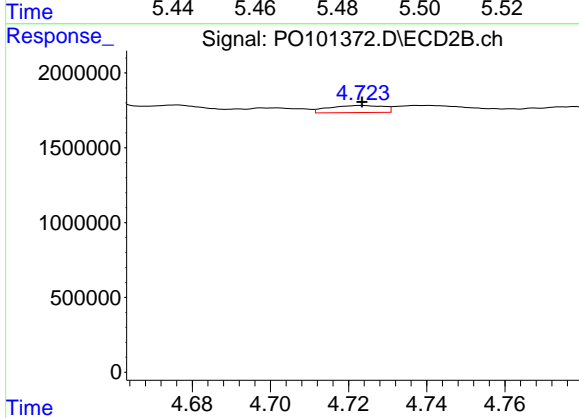
#2 Decachlorobiphenyl
 R.T.: 8.674 min
 Delta R.T.: -0.001 min
 Response: 69861002
 Conc: 36.87 ng/ml



#3 AR-1016-1

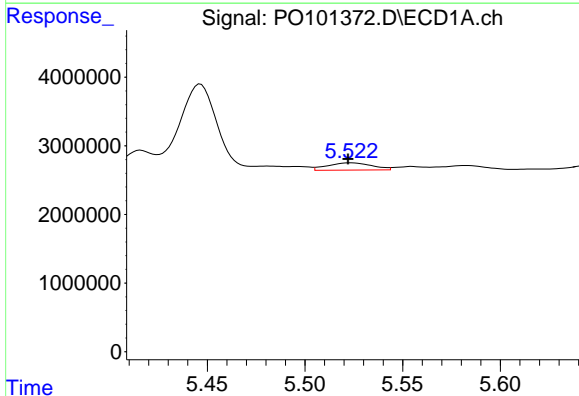
R.T.: 5.481 min
 Delta R.T.: -0.019 min
 Response: 677079
 Conc: 6.93 ng/ml

Instrument :
 ECD_O
 ClientSampleId :
 I.BLK



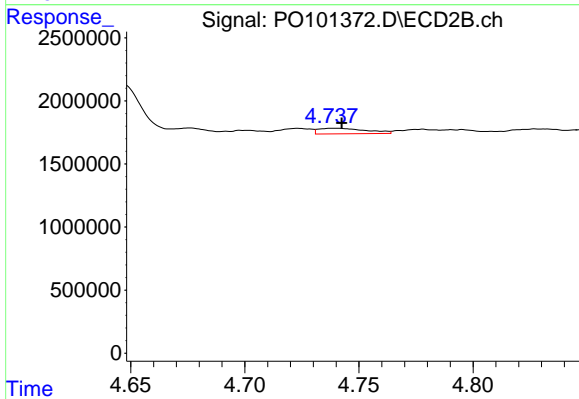
#3 AR-1016-1

R.T.: 4.723 min
 Delta R.T.: 0.000 min
 Response: 459566
 Conc: 6.22 ng/ml



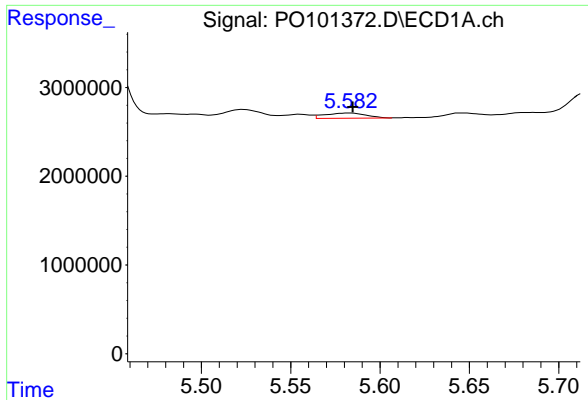
#4 AR-1016-2

R.T.: 5.523 min
 Delta R.T.: 0.001 min
 Response: 1680067
 Conc: 12.21 ng/ml



#4 AR-1016-2

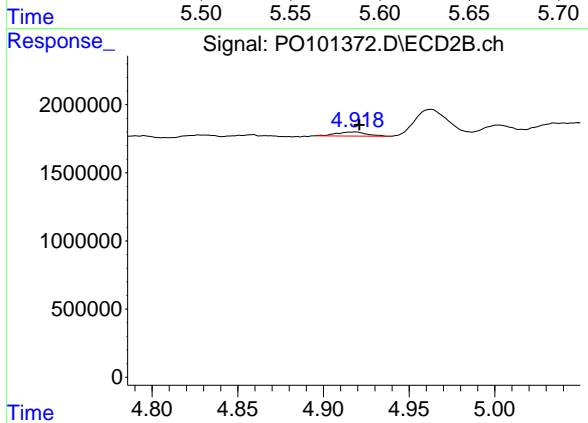
R.T.: 4.739 min
 Delta R.T.: -0.003 min
 Response: 646292
 Conc: 6.56 ng/ml



#5 AR-1016-3

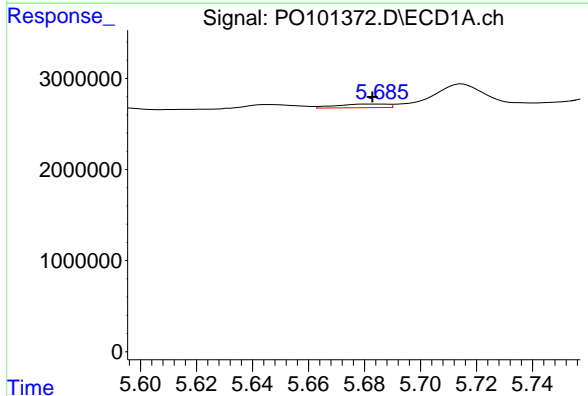
R.T.: 5.583 min
 Delta R.T.: -0.002 min
 Response: 919572
 Conc: 10.25 ng/ml

Instrument :
 ECD_O
 ClientSampleId :
 I.BLK



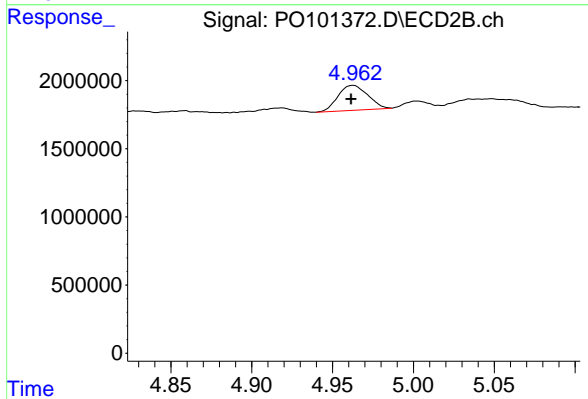
#5 AR-1016-3

R.T.: 4.918 min
 Delta R.T.: -0.003 min
 Response: 364616
 Conc: 6.65 ng/ml



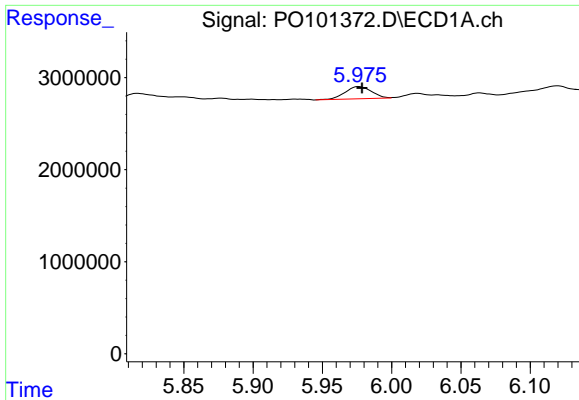
#6 AR-1016-4

R.T.: 5.686 min
 Delta R.T.: 0.003 min
 Response: 505192
 Conc: 7.07 ng/ml



#6 AR-1016-4

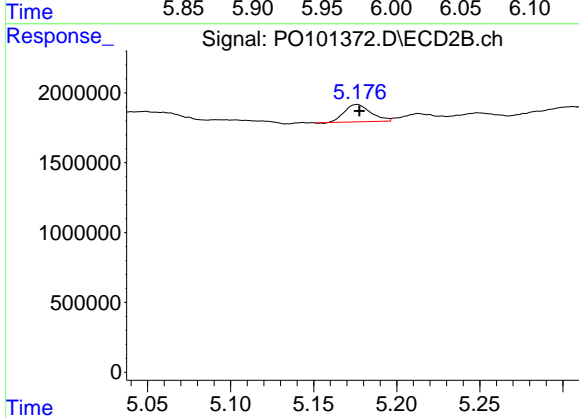
R.T.: 4.963 min
 Delta R.T.: 0.001 min
 Response: 2350202
 Conc: 46.25 ng/ml



#7 AR-1016-5

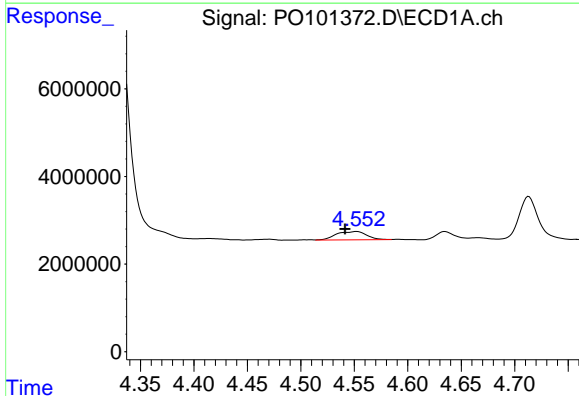
R.T.: 5.976 min
 Delta R.T.: -0.002 min
 Response: 1770112
 Conc: 22.39 ng/ml

Instrument :
 ECD_O
 ClientSampleId :
 I.BLK



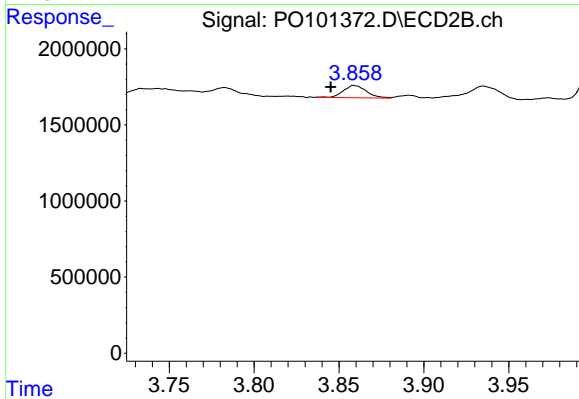
#7 AR-1016-5

R.T.: 5.176 min
 Delta R.T.: -0.001 min
 Response: 1373141
 Conc: 21.03 ng/ml



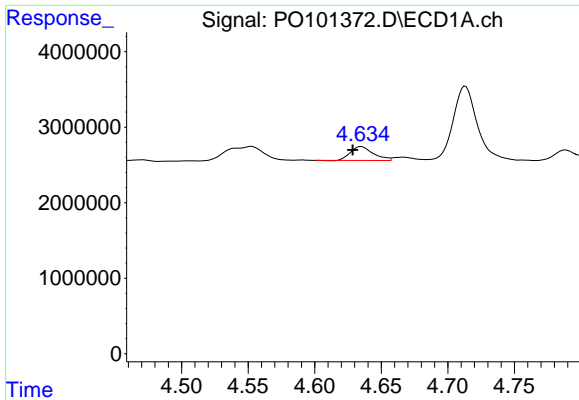
#8 AR-1221-1

R.T.: 4.552 min
 Delta R.T.: 0.011 min
 Response: 3734830
 Conc: 89.20 ng/ml



#8 AR-1221-1

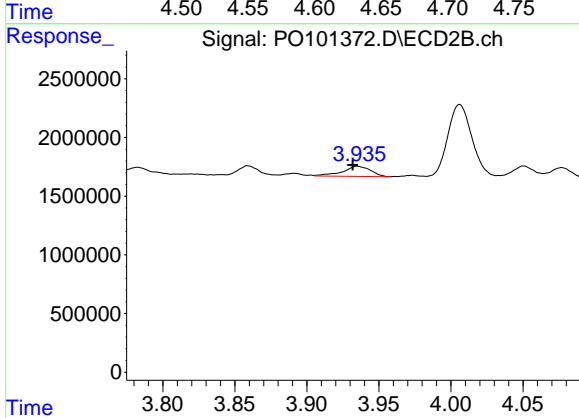
R.T.: 3.859 min
 Delta R.T.: 0.014 min
 Response: 768600
 Conc: 26.84 ng/ml



#9 AR-1221-2

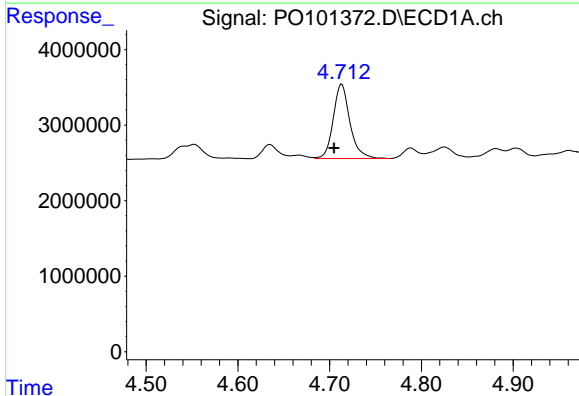
R.T.: 4.635 min
 Delta R.T.: 0.006 min
 Response: 2171883
 Conc: 68.45 ng/ml

Instrument :
 ECD_O
 ClientSampleId :
 I.BLK



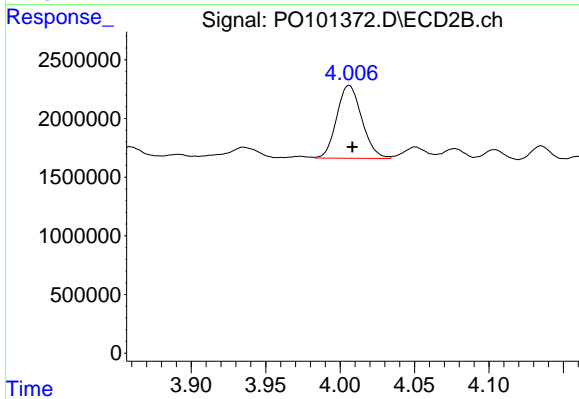
#9 AR-1221-2

R.T.: 3.935 min
 Delta R.T.: 0.003 min
 Response: 1156727
 Conc: 51.72 ng/ml



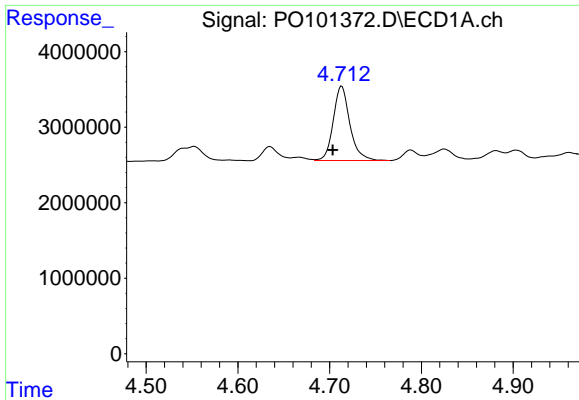
#10 AR-1221-3

R.T.: 4.713 min
 Delta R.T.: 0.008 min
 Response: 12384169
 Conc: 139.86 ng/ml



#10 AR-1221-3

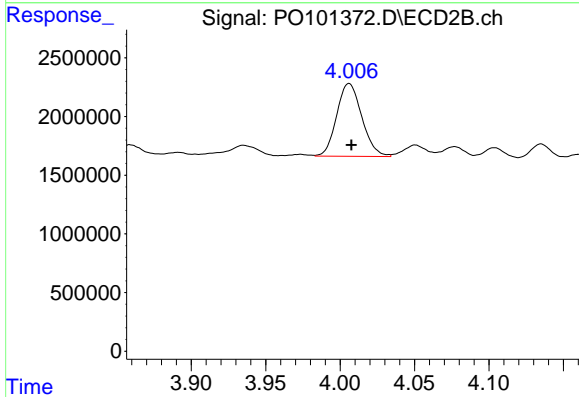
R.T.: 4.006 min
 Delta R.T.: -0.002 min
 Response: 7298106
 Conc: 114.82 ng/ml



#11 AR-1232-1

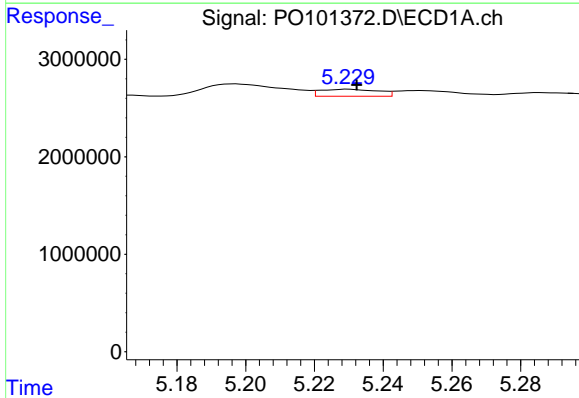
R.T.: 4.713 min
 Delta R.T.: 0.010 min
 Response: 12384169
 Conc: 163.79 ng/ml

Instrument :
 ECD_O
 ClientSampleId :
 I.BLK



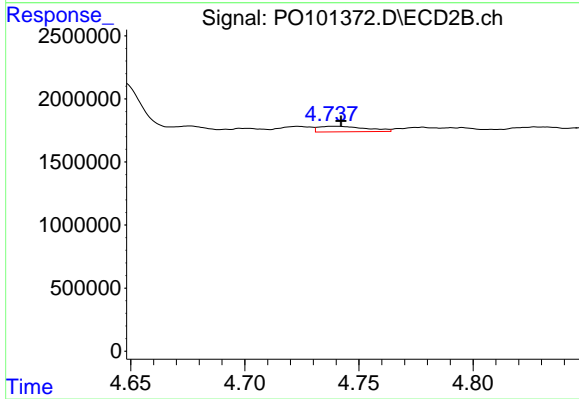
#11 AR-1232-1

R.T.: 4.006 min
 Delta R.T.: -0.001 min
 Response: 7298106
 Conc: 133.76 ng/ml



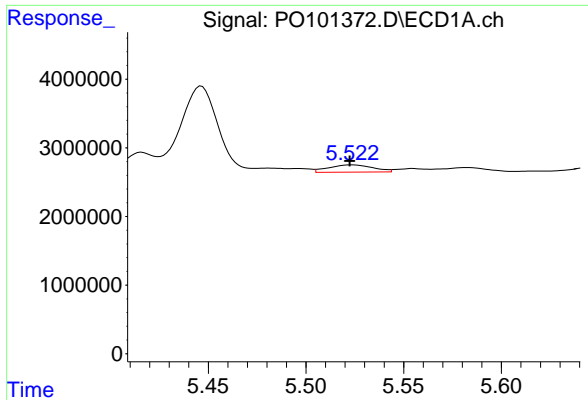
#12 AR-1232-2

R.T.: 5.230 min
 Delta R.T.: -0.002 min
 Response: 838915
 Conc: 18.46 ng/ml



#12 AR-1232-2

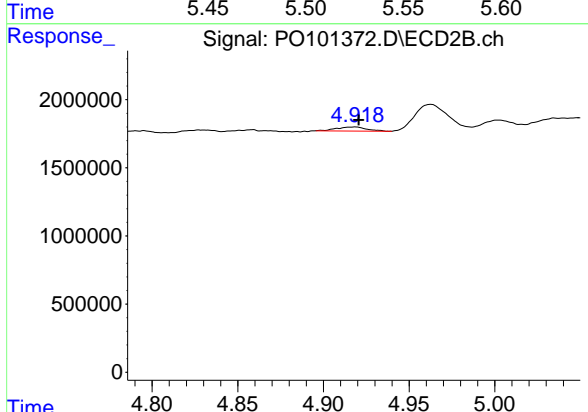
R.T.: 4.739 min
 Delta R.T.: -0.003 min
 Response: 646292
 Conc: 13.44 ng/ml



#13 AR-1232-3

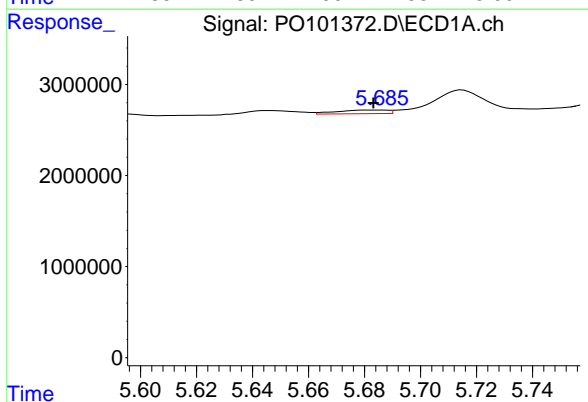
R.T.: 5.523 min
 Delta R.T.: 0.000 min
 Response: 1680067
 Conc: 25.10 ng/ml

Instrument :
 ECD_O
 ClientSampleId :
 I.BLK



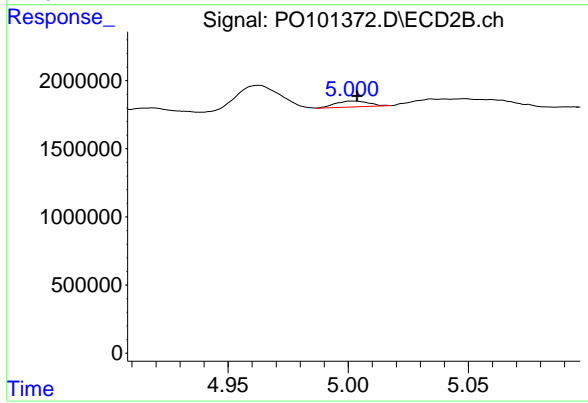
#13 AR-1232-3

R.T.: 4.918 min
 Delta R.T.: -0.002 min
 Response: 364616
 Conc: 13.91 ng/ml



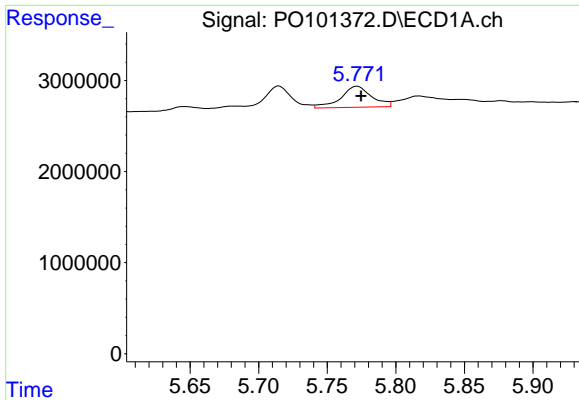
#14 AR-1232-4

R.T.: 5.686 min
 Delta R.T.: 0.003 min
 Response: 505192
 Conc: 14.11 ng/ml



#14 AR-1232-4

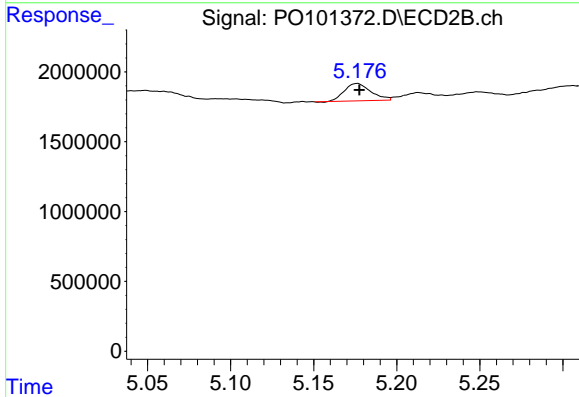
R.T.: 5.002 min
 Delta R.T.: -0.002 min
 Response: 424082
 Conc: 15.23 ng/ml



#15 AR-1232-5

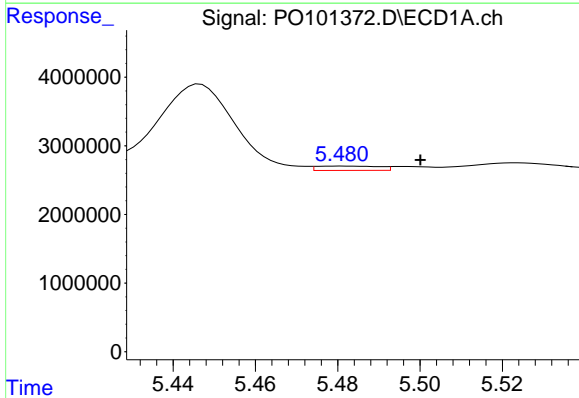
R.T.: 5.772 min
 Delta R.T.: -0.003 min
 Response: 3604357
 Conc: 105.65 ng/ml

Instrument :
 ECD_O
 ClientSampleId :
 I.BLK



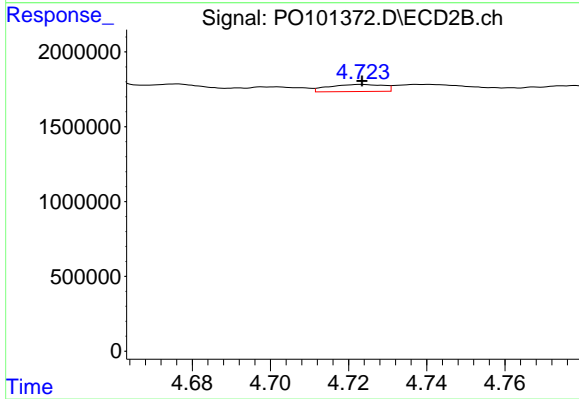
#15 AR-1232-5

R.T.: 5.176 min
 Delta R.T.: -0.001 min
 Response: 1373141
 Conc: 44.90 ng/ml



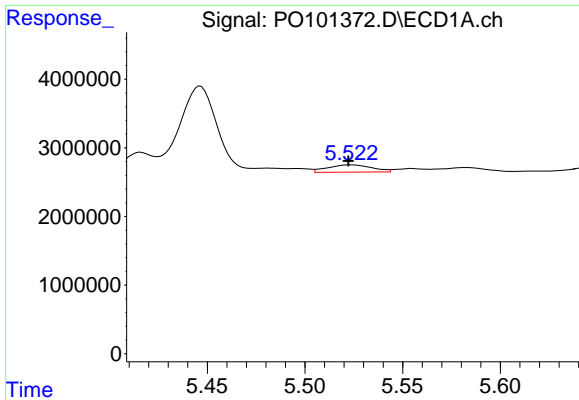
#16 AR-1242-1

R.T.: 5.481 min
 Delta R.T.: -0.019 min
 Response: 677079
 Conc: 8.75 ng/ml



#16 AR-1242-1

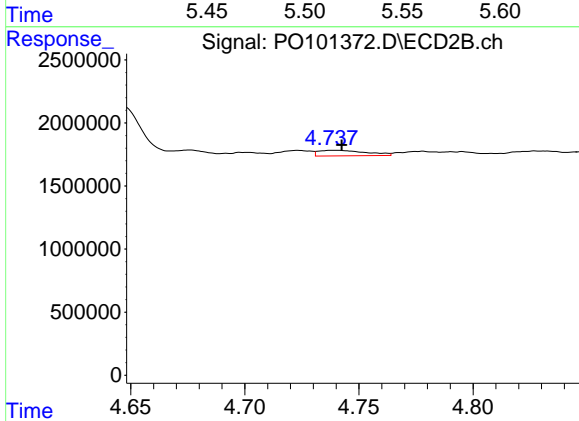
R.T.: 4.723 min
 Delta R.T.: 0.000 min
 Response: 459566
 Conc: 7.81 ng/ml



#17 AR-1242-2

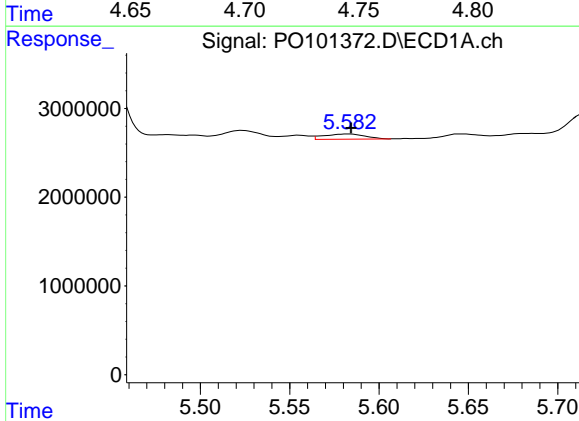
R.T.: 5.523 min
 Delta R.T.: 0.001 min
 Response: 1680067
 Conc: 15.51 ng/ml

Instrument :
 ECD_O
 ClientSampleId :
 I.BLK



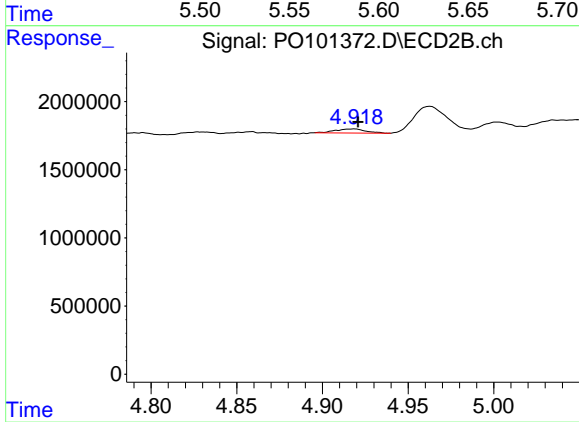
#17 AR-1242-2

R.T.: 4.739 min
 Delta R.T.: -0.003 min
 Response: 646292
 Conc: 8.33 ng/ml



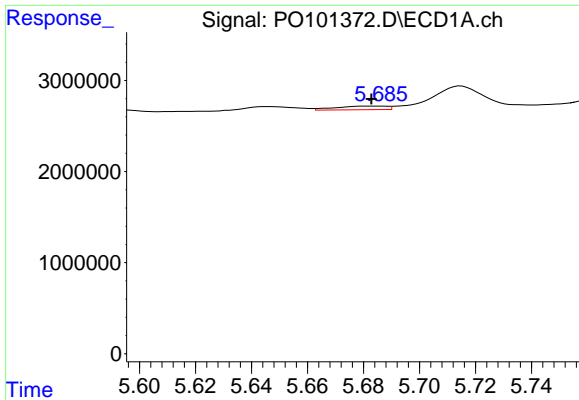
#18 AR-1242-3

R.T.: 5.583 min
 Delta R.T.: -0.001 min
 Response: 919572
 Conc: 12.94 ng/ml



#18 AR-1242-3

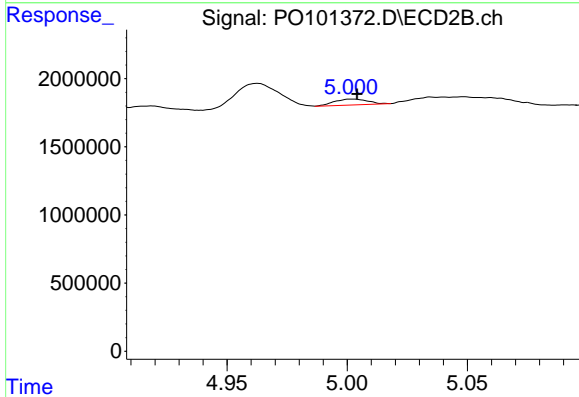
R.T.: 4.918 min
 Delta R.T.: -0.003 min
 Response: 364616
 Conc: 8.41 ng/ml



#19 AR-1242-4

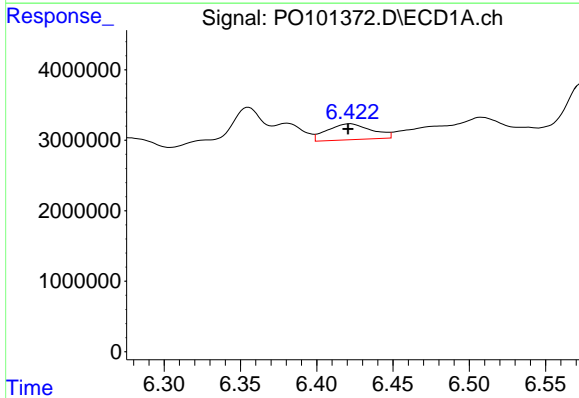
R.T.: 5.686 min
 Delta R.T.: 0.003 min
 Response: 505192
 Conc: 8.87 ng/ml

Instrument :
 ECD_O
 ClientSampleId :
 I.BLK



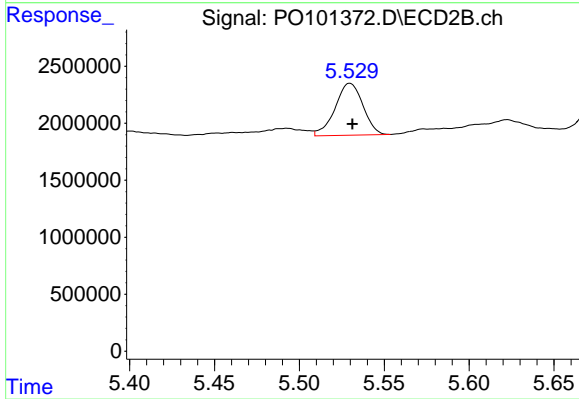
#19 AR-1242-4

R.T.: 5.002 min
 Delta R.T.: -0.002 min
 Response: 424082
 Conc: 8.52 ng/ml



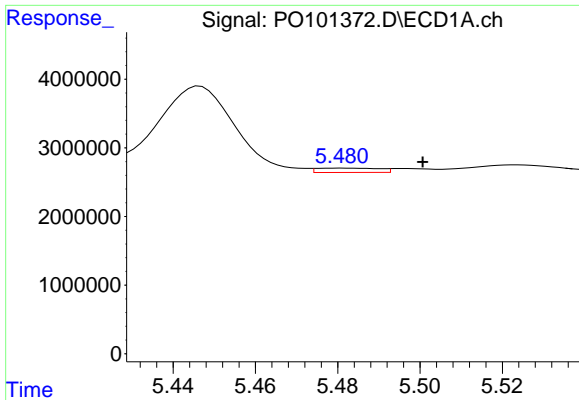
#20 AR-1242-5

R.T.: 6.422 min
 Delta R.T.: 0.002 min
 Response: 4574077
 Conc: 85.24 ng/ml



#20 AR-1242-5

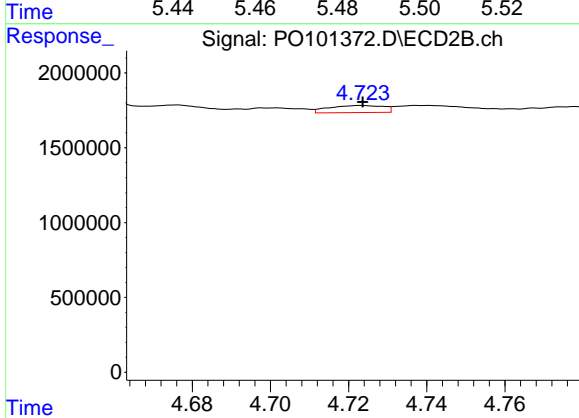
R.T.: 5.530 min
 Delta R.T.: -0.001 min
 Response: 5207776
 Conc: 98.31 ng/ml



#21 AR-1248-1

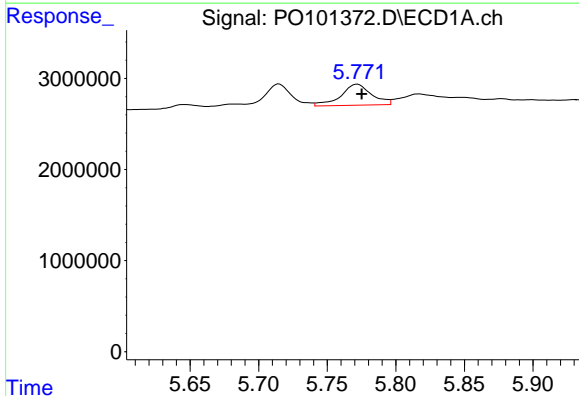
R.T.: 5.481 min
 Delta R.T.: -0.019 min
 Response: 677079
 Conc: 11.68 ng/ml

Instrument :
 ECD_O
 ClientSampleId :
 I.BLK



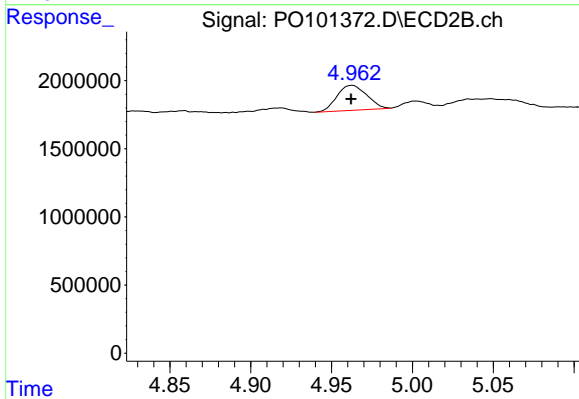
#21 AR-1248-1

R.T.: 4.723 min
 Delta R.T.: 0.000 min
 Response: 459566
 Conc: 10.27 ng/ml



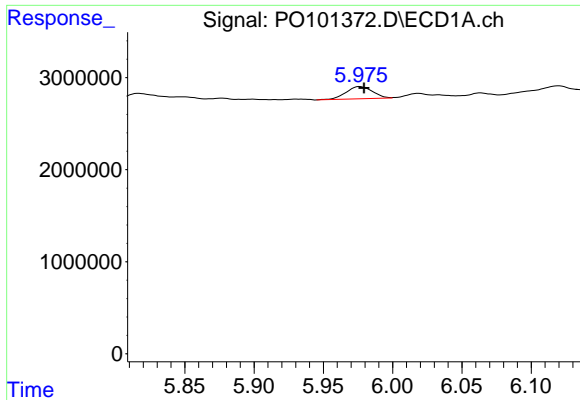
#22 AR-1248-2

R.T.: 5.772 min
 Delta R.T.: -0.003 min
 Response: 3604357
 Conc: 35.79 ng/ml



#22 AR-1248-2

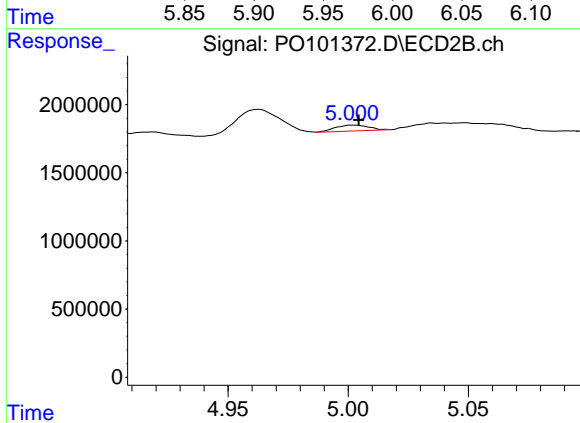
R.T.: 4.963 min
 Delta R.T.: 0.000 min
 Response: 2350202
 Conc: 33.43 ng/ml



#23 AR-1248-3

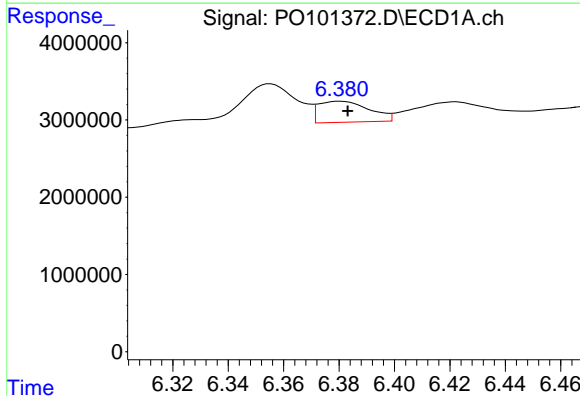
R.T.: 5.976 min
 Delta R.T.: -0.003 min
 Response: 1770112
 Conc: 17.08 ng/ml

Instrument :
 ECD_O
 ClientSampleId :
 I.BLK



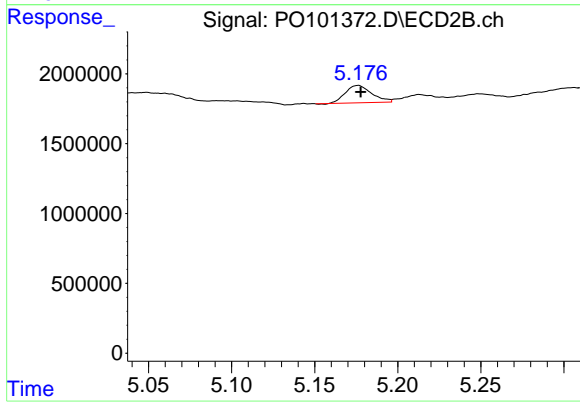
#23 AR-1248-3

R.T.: 5.002 min
 Delta R.T.: -0.002 min
 Response: 424082
 Conc: 5.83 ng/ml



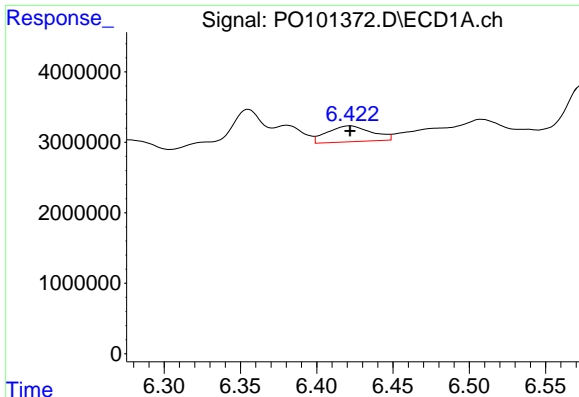
#24 AR-1248-4

R.T.: 6.381 min
 Delta R.T.: -0.003 min
 Response: 3458101
 Conc: 38.08 ng/ml



#24 AR-1248-4

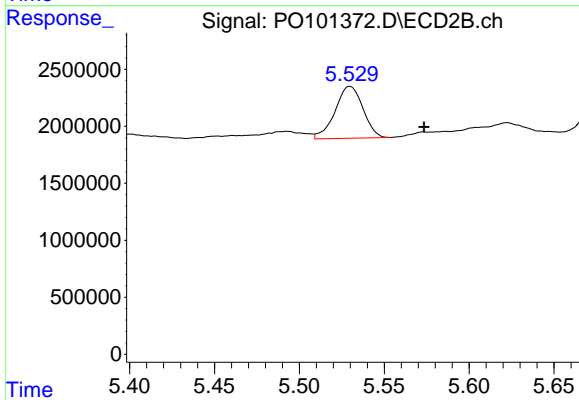
R.T.: 5.176 min
 Delta R.T.: -0.002 min
 Response: 1373141
 Conc: 16.15 ng/ml



#25 AR-1248-5

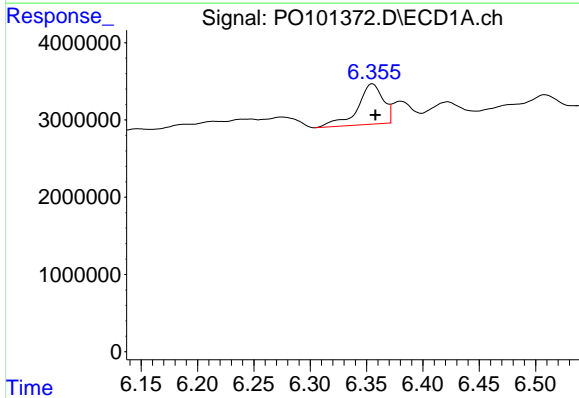
R.T.: 6.422 min
 Delta R.T.: 0.000 min
 Response: 4574077
 Conc: 51.28 ng/ml

Instrument :
 ECD_O
 ClientSampleId :
 I.BLK



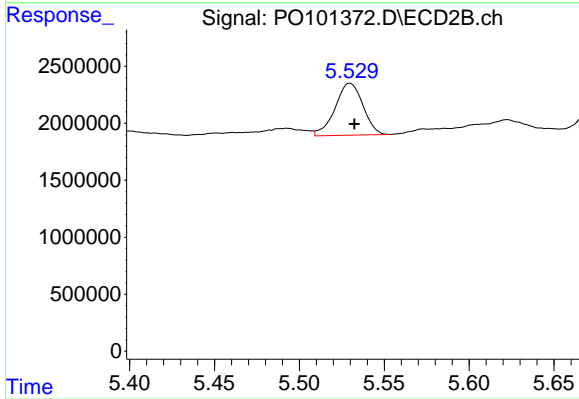
#25 AR-1248-5

R.T.: 5.530 min
 Delta R.T.: -0.044 min
 Response: 5207776
 Conc: 76.06 ng/ml



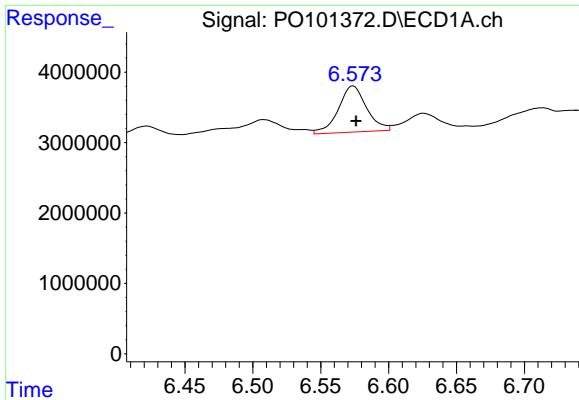
#26 AR-1254-1

R.T.: 6.355 min
 Delta R.T.: -0.002 min
 Response: 8257364
 Conc: 69.40 ng/ml



#26 AR-1254-1

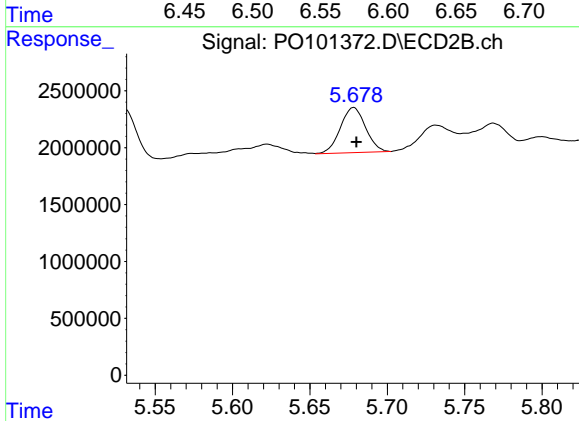
R.T.: 5.530 min
 Delta R.T.: -0.003 min
 Response: 5207776
 Conc: 41.86 ng/ml



#27 AR-1254-2

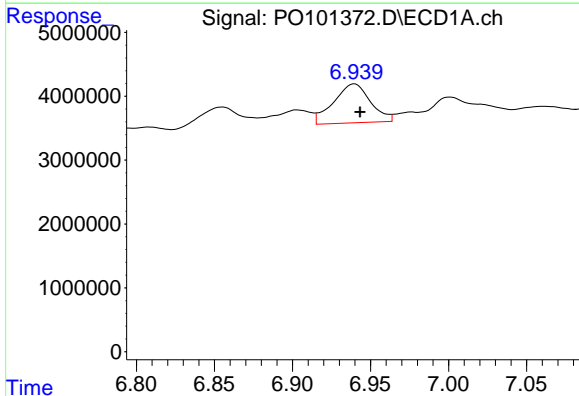
R.T.: 6.574 min
 Delta R.T.: -0.002 min
 Response: 9507627
 Conc: 55.82 ng/ml

Instrument :
 ECD_O
 ClientSampleId :
 I.BLK



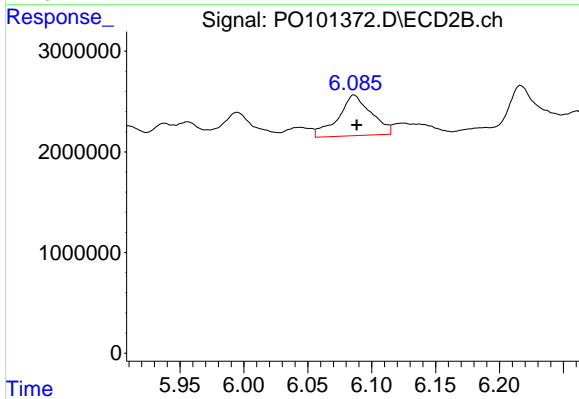
#27 AR-1254-2

R.T.: 5.678 min
 Delta R.T.: -0.002 min
 Response: 4506734
 Conc: 40.26 ng/ml



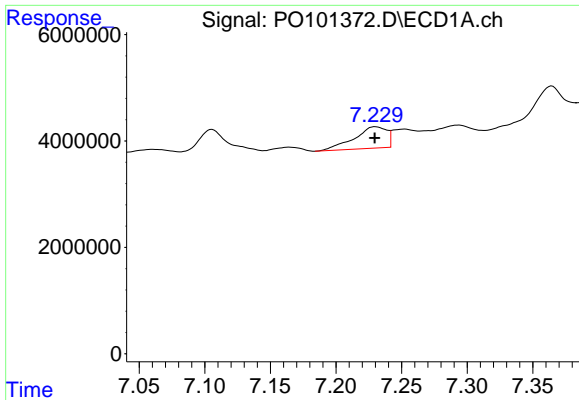
#28 AR-1254-3

R.T.: 6.940 min
 Delta R.T.: -0.004 min
 Response: 10039267
 Conc: 61.13 ng/ml



#28 AR-1254-3

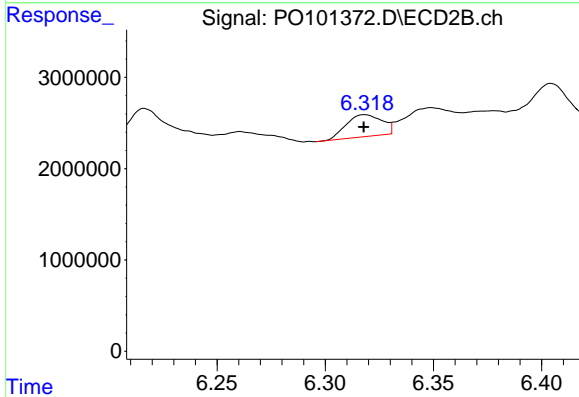
R.T.: 6.086 min
 Delta R.T.: -0.002 min
 Response: 7289641
 Conc: 43.81 ng/ml



#29 AR-1254-4

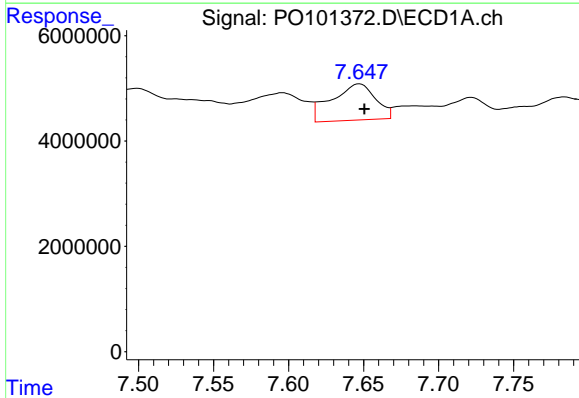
R.T.: 7.230 min
 Delta R.T.: 0.000 min
 Response: 6939306
 Conc: 69.43 ng/ml

Instrument :
 ECD_O
 ClientSampleId :
 I.BLK



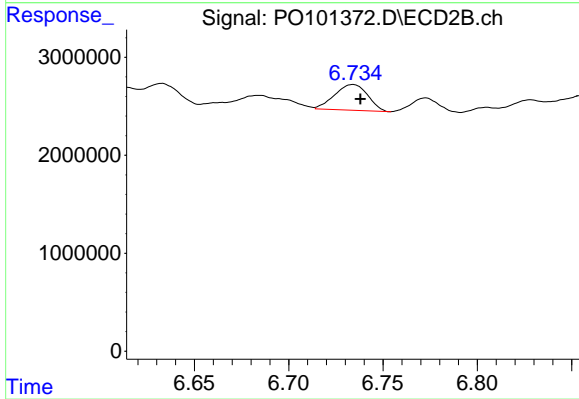
#29 AR-1254-4

R.T.: 6.318 min
 Delta R.T.: 0.000 min
 Response: 2763087
 Conc: 32.39 ng/ml



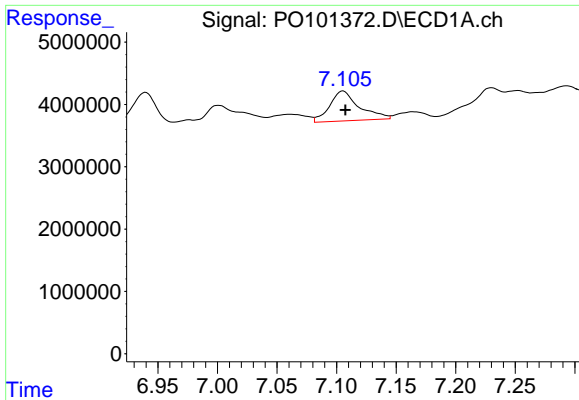
#30 AR-1254-5

R.T.: 7.647 min
 Delta R.T.: -0.003 min
 Response: 13993708
 Conc: 119.06 ng/ml



#30 AR-1254-5

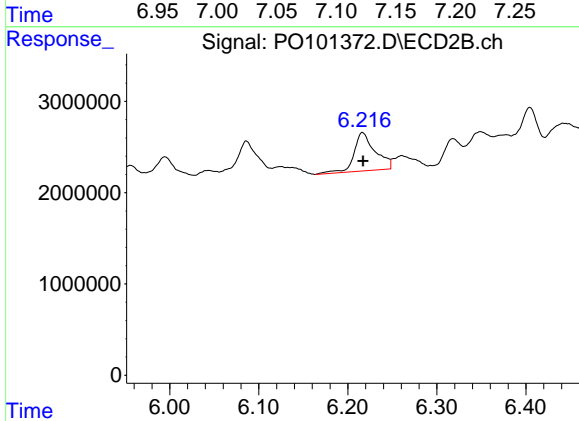
R.T.: 6.734 min
 Delta R.T.: -0.004 min
 Response: 3191551
 Conc: 23.55 ng/ml



#31 AR-1260-1

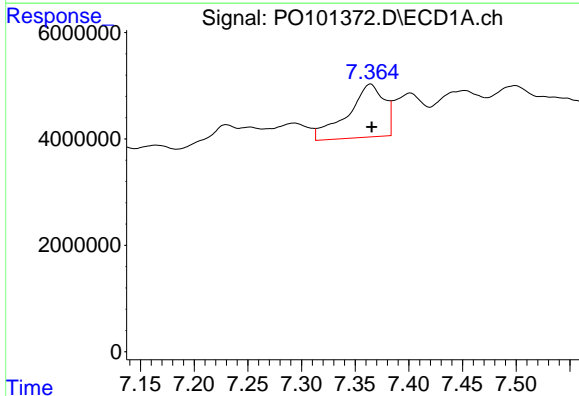
R.T.: 7.105 min
 Delta R.T.: -0.002 min
 Response: 8285123
 Conc: 58.10 ng/ml

Instrument :
 ECD_O
 ClientSampleId :
 I.BLK



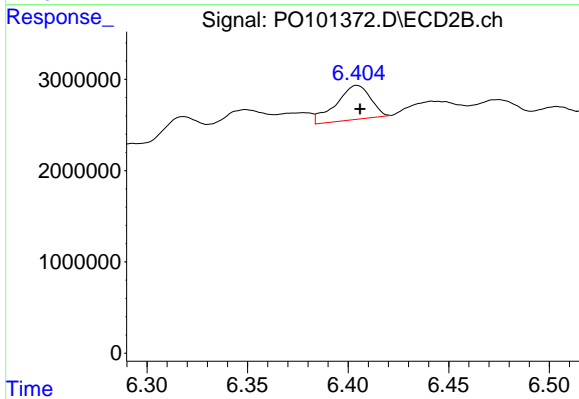
#31 AR-1260-1

R.T.: 6.217 min
 Delta R.T.: 0.000 min
 Response: 6948560
 Conc: 56.31 ng/ml



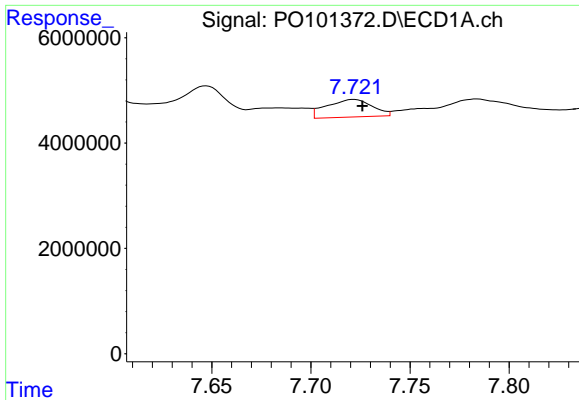
#32 AR-1260-2

R.T.: 7.364 min
 Delta R.T.: -0.001 min
 Response: 23532944
 Conc: 160.65 ng/ml



#32 AR-1260-2

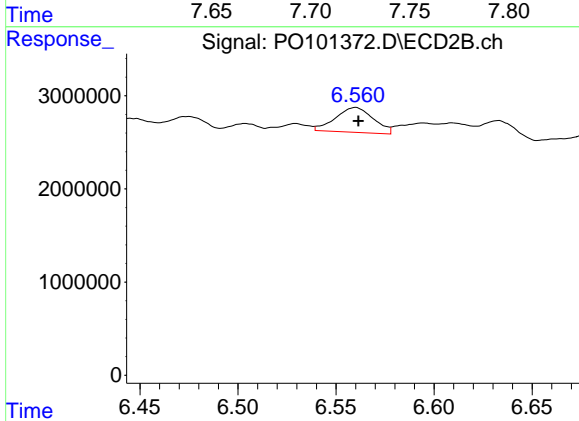
R.T.: 6.404 min
 Delta R.T.: -0.001 min
 Response: 4436467
 Conc: 32.45 ng/ml



#33 AR-1260-3

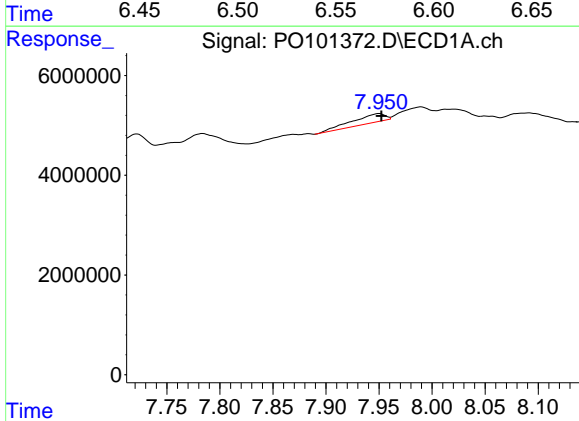
R.T.: 7.722 min
 Delta R.T.: -0.004 min
 Response: 5346571
 Conc: 45.79 ng/ml

Instrument :
 ECD_O
 ClientSampleId :
 I.BLK



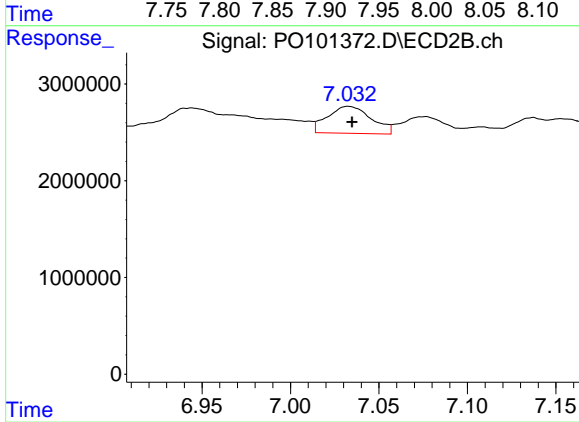
#33 AR-1260-3

R.T.: 6.560 min
 Delta R.T.: -0.001 min
 Response: 3606234
 Conc: 28.11 ng/ml



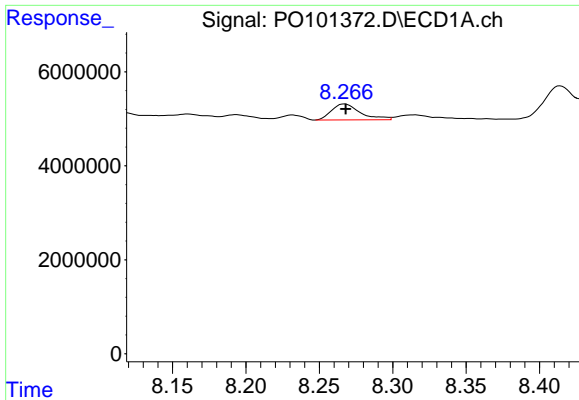
#34 AR-1260-4

R.T.: 7.950 min
 Delta R.T.: -0.002 min
 Response: 3818769
 Conc: 32.44 ng/ml



#34 AR-1260-4

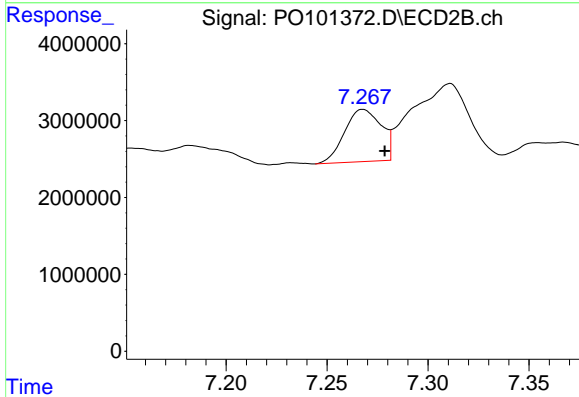
R.T.: 7.033 min
 Delta R.T.: -0.002 min
 Response: 4817607
 Conc: 46.61 ng/ml



#35 AR-1260-5

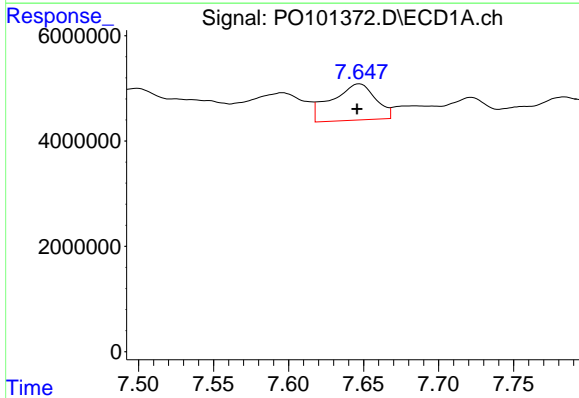
R.T.: 8.267 min
 Delta R.T.: 0.000 min
 Response: 4611990
 Conc: 21.03 ng/ml

Instrument :
 ECD_O
 ClientSampleId :
 I.BLK



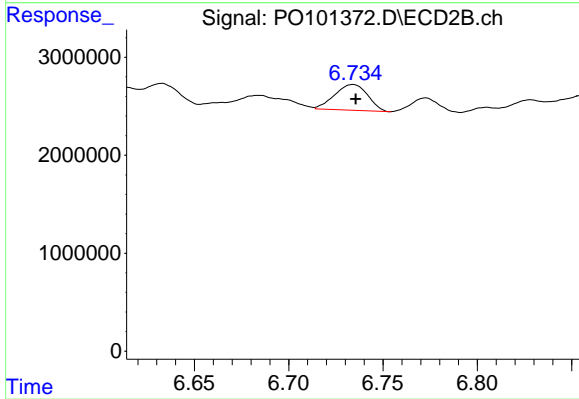
#35 AR-1260-5

R.T.: 7.268 min
 Delta R.T.: -0.011 min
 Response: 8583071
 Conc: 40.89 ng/ml



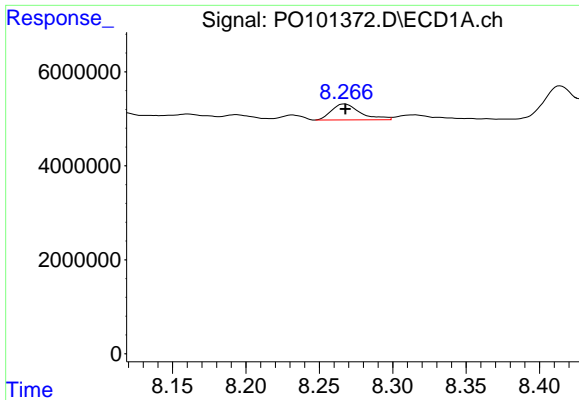
#36 AR-1262-1

R.T.: 7.647 min
 Delta R.T.: 0.002 min
 Response: 13993708
 Conc: 125.22 ng/ml



#36 AR-1262-1

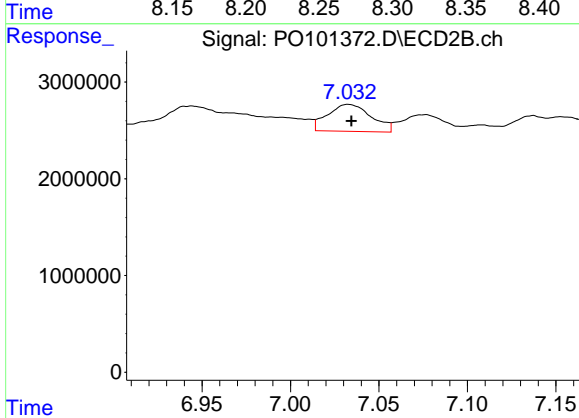
R.T.: 6.734 min
 Delta R.T.: -0.001 min
 Response: 3191551
 Conc: 39.37 ng/ml



#37 AR-1262-2

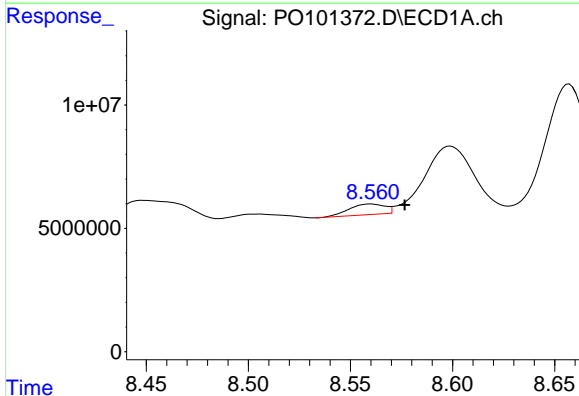
R.T.: 8.267 min
 Delta R.T.: 0.000 min
 Response: 4611990
 Conc: 16.95 ng/ml

Instrument :
 ECD_O
 ClientSampleId :
 I.BLK



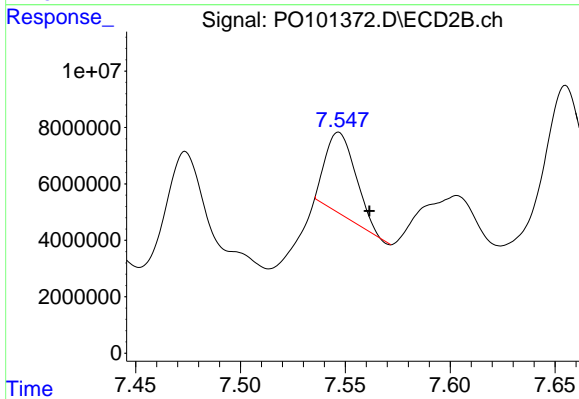
#37 AR-1262-2

R.T.: 7.033 min
 Delta R.T.: -0.002 min
 Response: 4817607
 Conc: 32.38 ng/ml



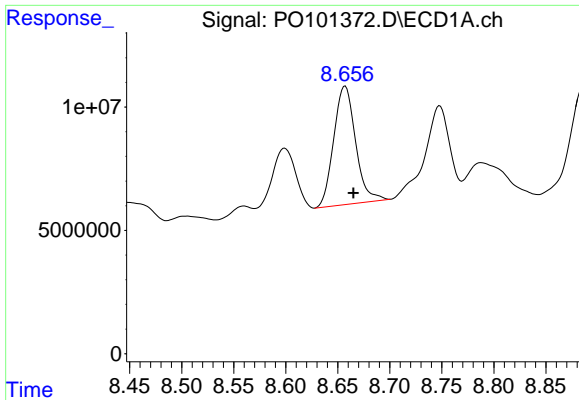
#38 AR-1262-3

R.T.: 8.560 min
 Delta R.T.: -0.017 min
 Response: 5246185
 Conc: 26.97 ng/ml



#38 AR-1262-3

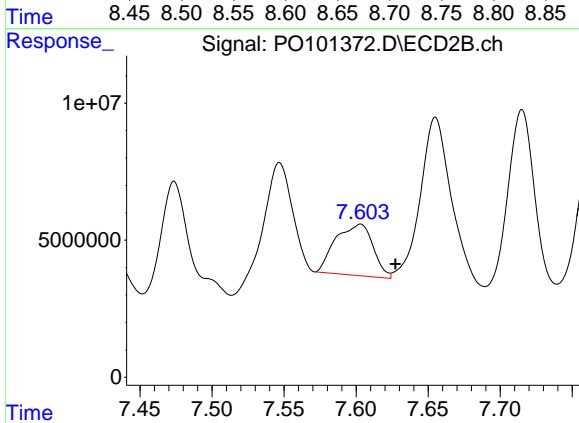
R.T.: 7.547 min
 Delta R.T.: -0.015 min
 Response: 28896639
 Conc: 281.30 ng/ml



#39 AR-1262-4

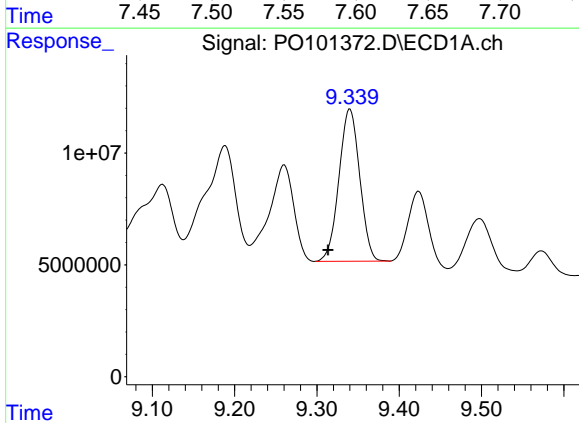
R.T.: 8.657 min
 Delta R.T.: -0.008 min
 Response: 70378165
 Conc: 453.27 ng/ml

Instrument :
 ECD_O
 ClientSampleId :
 I.BLK



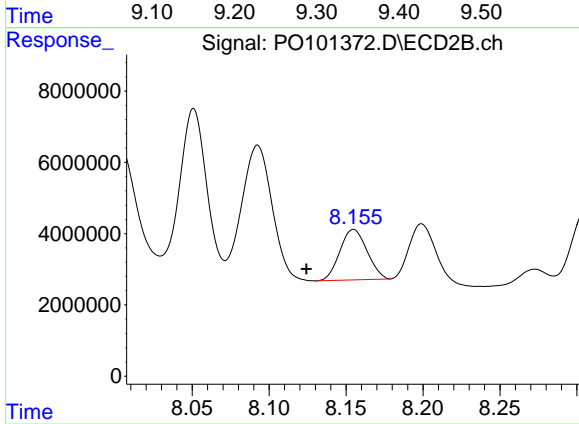
#39 AR-1262-4

R.T.: 7.603 min
 Delta R.T.: -0.024 min
 Response: 33729946
 Conc: 172.73 ng/ml



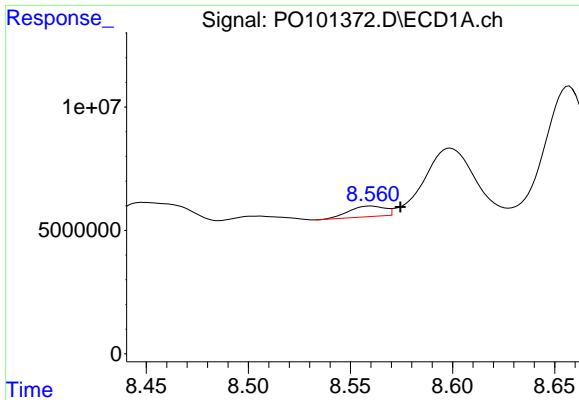
#40 AR-1262-5

R.T.: 9.340 min
 Delta R.T.: 0.027 min
 Response: 119395718
 Conc: 1271.10 ng/ml



#40 AR-1262-5

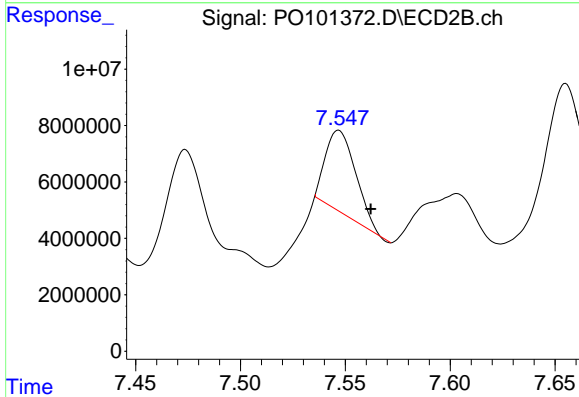
R.T.: 8.155 min
 Delta R.T.: 0.031 min
 Response: 17340170
 Conc: 206.92 ng/ml



#41 AR-1268-1

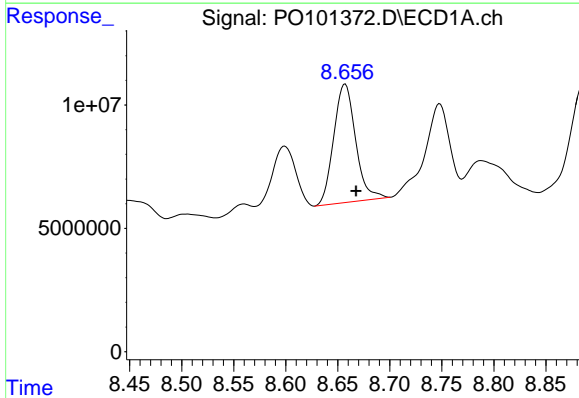
R.T.: 8.560 min
 Delta R.T.: -0.014 min
 Response: 5246185
 Conc: 16.54 ng/ml

Instrument :
 ECD_O
 ClientSampleId :
 I.BLK



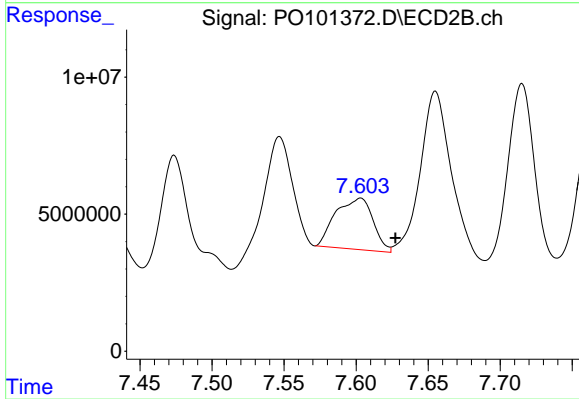
#41 AR-1268-1

R.T.: 7.547 min
 Delta R.T.: -0.015 min
 Response: 28896639
 Conc: 103.37 ng/ml



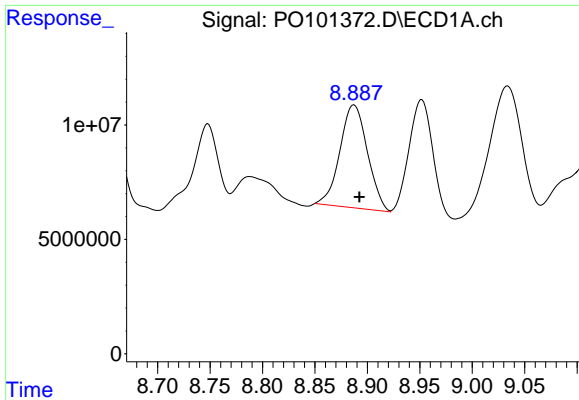
#42 AR-1268-2

R.T.: 8.657 min
 Delta R.T.: -0.010 min
 Response: 70378165
 Conc: 243.69 ng/ml



#42 AR-1268-2

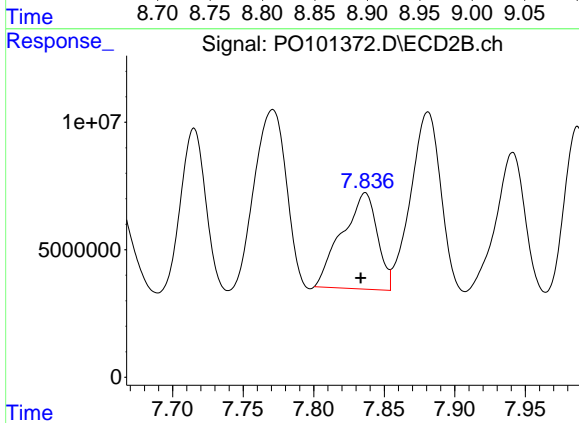
R.T.: 7.603 min
 Delta R.T.: -0.024 min
 Response: 33729946
 Conc: 131.89 ng/ml



#43 AR-1268-3

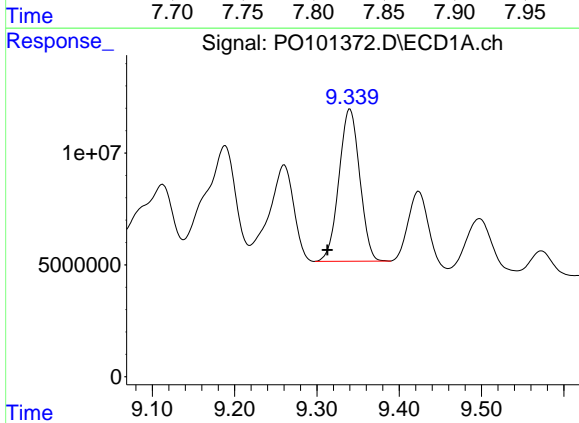
R.T.: 8.887 min
 Delta R.T.: -0.005 min
 Response: 82085391
 Conc: 318.59 ng/ml

Instrument :
 ECD_O
 ClientSampleId :
 I.BLK



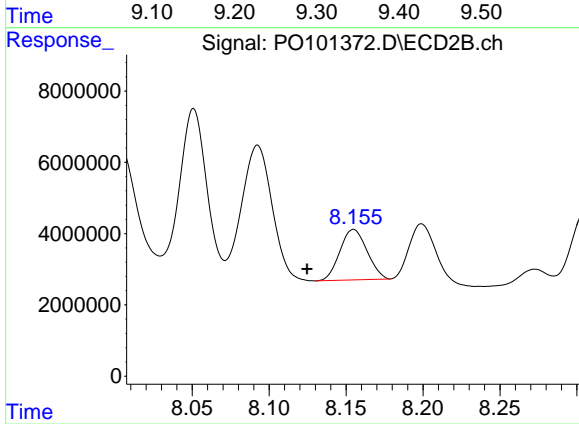
#43 AR-1268-3

R.T.: 7.837 min
 Delta R.T.: 0.003 min
 Response: 65529621
 Conc: 281.79 ng/ml



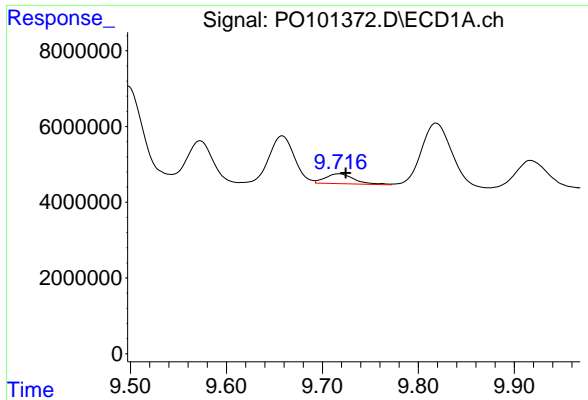
#44 AR-1268-4

R.T.: 9.340 min
 Delta R.T.: 0.027 min
 Response: 119395718
 Conc: 1299.32 ng/ml



#44 AR-1268-4

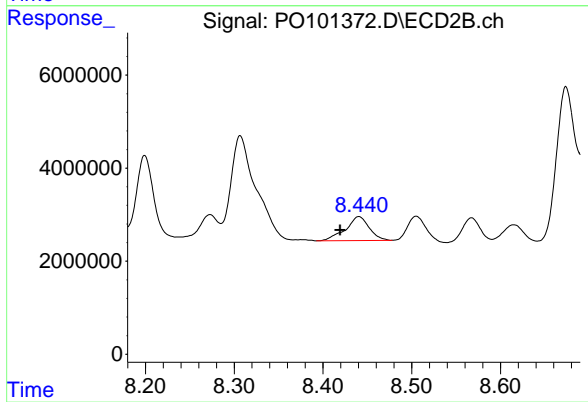
R.T.: 8.155 min
 Delta R.T.: 0.030 min
 Response: 17340170
 Conc: 204.05 ng/ml



#45 AR-1268-5

R.T.: 9.717 min
Delta R.T.: -0.007 min
Response: 5422311
Conc: 6.77 ng/ml

Instrument :
ECD_O
ClientSampleId :
I.BLK



#45 AR-1268-5

R.T.: 8.441 min
Delta R.T.: 0.021 min
Response: 9475253
Conc: 14.40 ng/ml