

Data Path : Z:\pestpcbsrv\HPCHEM1\ECD\_O\Data\P0013025\  
 Data File : P0109274.D  
 Signal(s) : Signal #1: ECD1A.ch Signal #2: ECD2B.ch  
 Acq On : 30 Jan 2025 09:37  
 Operator : YP/AJ  
 Sample : AR1242CCC500  
 Misc :  
 ALS Vial : 4 Sample Multiplier: 1

Instrument :  
 ECD\_O  
 ClientSampleId :  
 AR1242CCC500

Integration File signal 1: autoint1.e  
 Integration File signal 2: autoint2.e  
 Quant Time: Jan 30 14:26:49 2025  
 Quant Method : Z:\pestpcbsrv\HPCHEM1\ECD\_O\methods\P0012125.M  
 Quant Title : GC EXTRACTABLES  
 QLast Update : Wed Jan 22 03:46:11 2025  
 Response via : Initial Calibration  
 Integrator: ChemStation

Volume Inj. : 2 µl  
 Signal #1 Phase : ZB-MR1 Signal #2 Phase: ZB-MR2  
 Signal #1 Info : 30Mx0.32mmx 0.50µ Signal #2 Info : 30M x 0.32mm x 0.25µm

Compound	RT#1	RT#2	Resp#1	Resp#2	ng/ml	ng/ml
-----						
System Monitoring Compounds						
1) SA Tetrachlo...	3.698	3.694	398.4E6	290.3E6	52.717	54.149
2) SA Decachlor...	8.757	8.708	322.7E6	154.6E6	46.576	44.961
Target Compounds						
16) L4 AR-1242-1	4.792	4.778	114.1E6	76546125	536.934	535.618
17) L4 AR-1242-2	4.812	4.798	154.8E6	106.2E6	539.767	538.452
18) L4 AR-1242-3	4.868	4.973	108.8E6	57961274	531.611	531.545
19) L4 AR-1242-4	4.989	5.058	85322684	60190962	537.062	529.646
20) L4 AR-1242-5	5.643	5.580	88258093	72572786	528.393	530.554
-----						

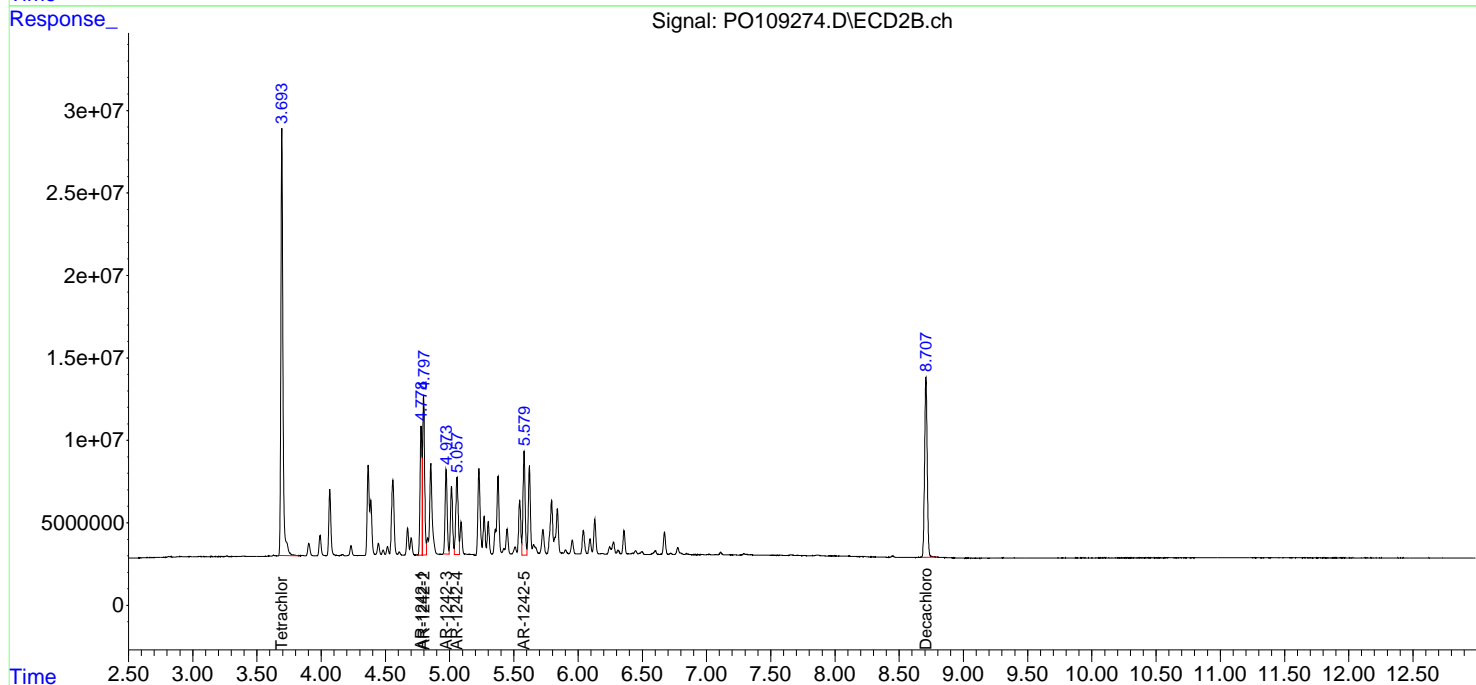
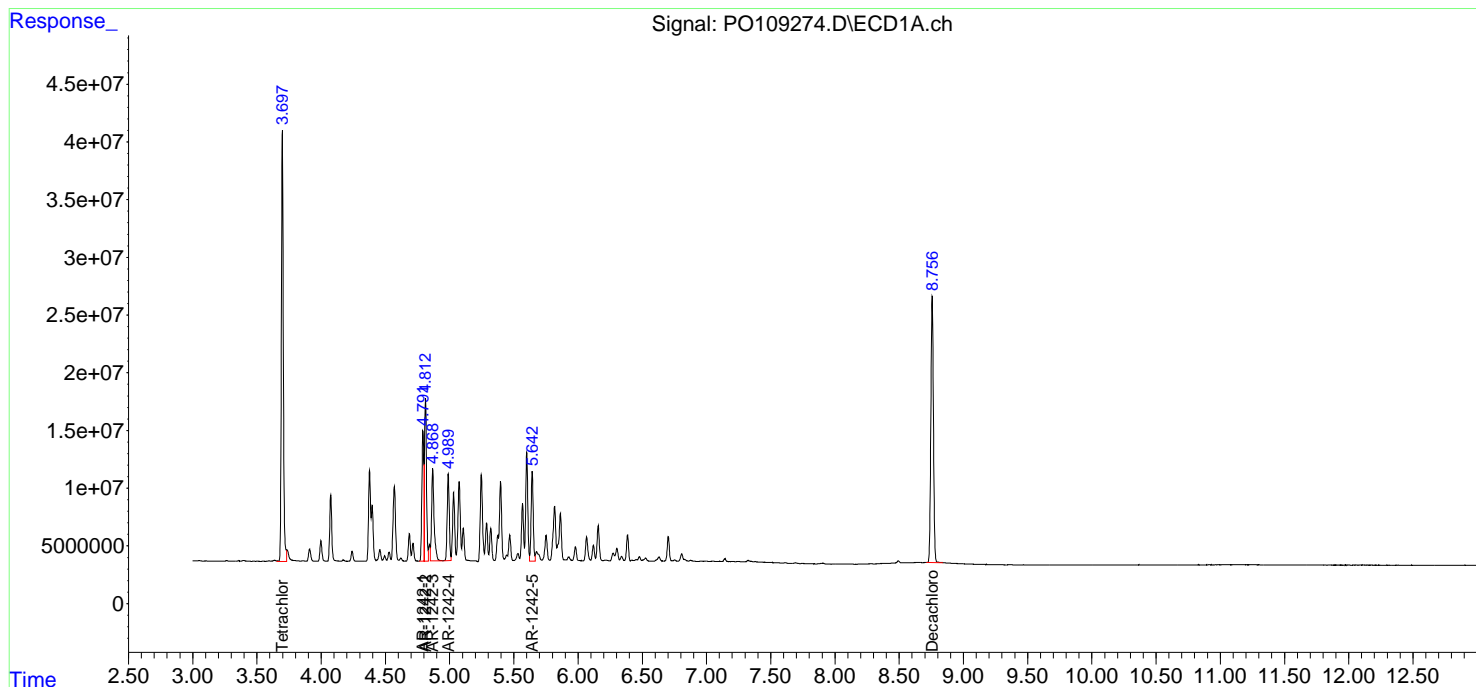
(f)=RT Delta > 1/2 Window (#)=Amounts differ by > 25% (m)=manual int.

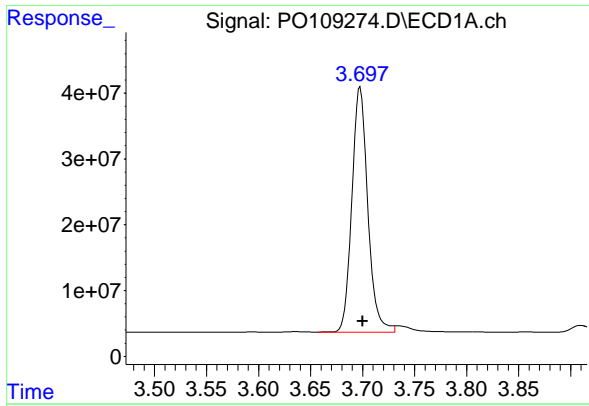
Data Path : Z:\pestpcbsrv\HPCHEM1\ECD\_O\Data\PO013025\  
 Data File : PO109274.D  
 Signal(s) : Signal #1: ECD1A.ch Signal #2: ECD2B.ch  
 Acq On : 30 Jan 2025 09:37  
 Operator : YP/AJ  
 Sample : AR1242CCC500  
 Misc :  
 ALS Vial : 4 Sample Multiplier: 1

Instrument :  
 ECD\_O  
 ClientSampleId :  
 AR1242CCC500

Integration File signal 1: autoint1.e  
 Integration File signal 2: autoint2.e  
 Quant Time: Jan 30 14:26:49 2025  
 Quant Method : Z:\pestpcbsrv\HPCHEM1\ECD\_O\methods\PO012125.M  
 Quant Title : GC EXTRACTABLES  
 QLast Update : Wed Jan 22 03:46:11 2025  
 Response via : Initial Calibration  
 Integrator: ChemStation

Volume Inj. : 2 µl  
 Signal #1 Phase : ZB-MR1 Signal #2 Phase: ZB-MR2  
 Signal #1 Info : 30Mx0.32mmx 0.50µ Signal #2 Info : 30M x 0.32mm x 0.25µm

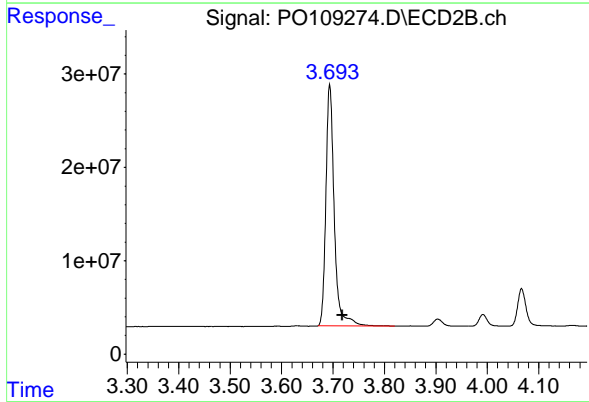




#1 Tetrachloro-m-xylene

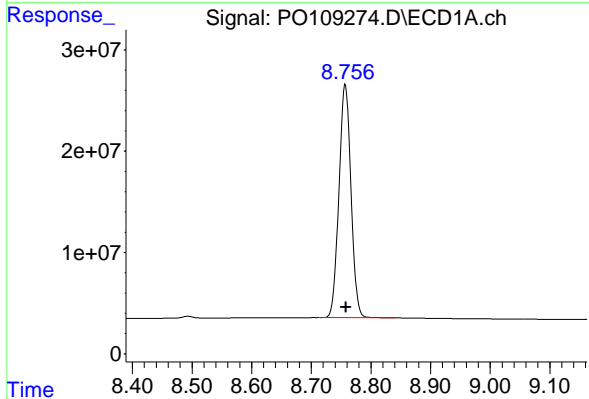
R.T.: 3.698 min  
 Delta R.T.: -0.002 min  
 Response: 398353807  
 Conc: 52.72 ng/ml

Instrument :  
 ECD\_O  
 ClientSampleId :  
 AR1242CCC500



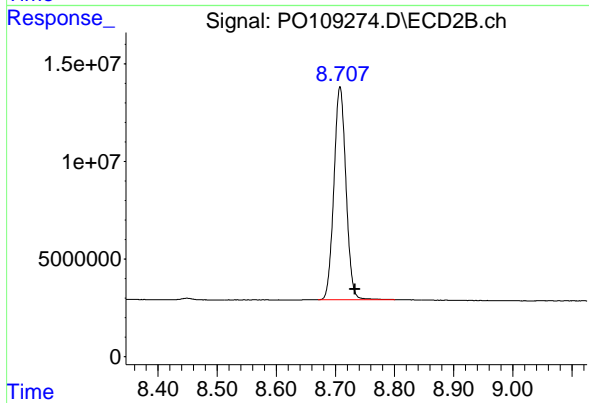
#1 Tetrachloro-m-xylene

R.T.: 3.694 min  
 Delta R.T.: -0.025 min  
 Response: 290255050  
 Conc: 54.15 ng/ml



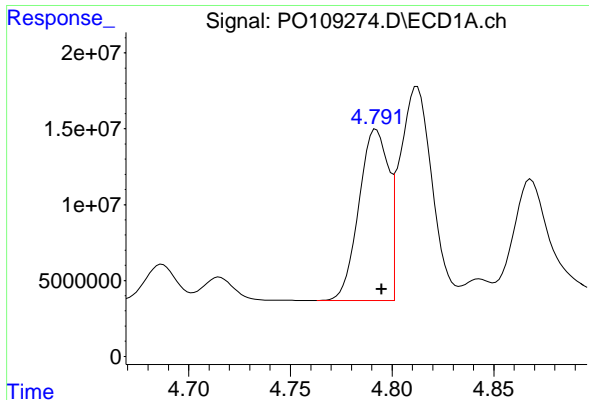
#2 Decachlorobiphenyl

R.T.: 8.757 min  
 Delta R.T.: 0.000 min  
 Response: 322664008  
 Conc: 46.58 ng/ml



#2 Decachlorobiphenyl

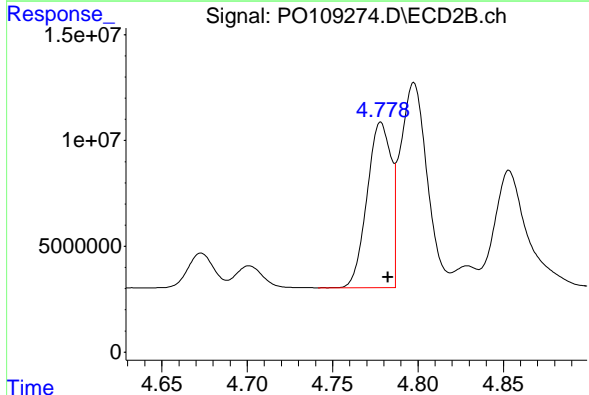
R.T.: 8.708 min  
 Delta R.T.: -0.025 min  
 Response: 154610727  
 Conc: 44.96 ng/ml



#16 AR-1242-1

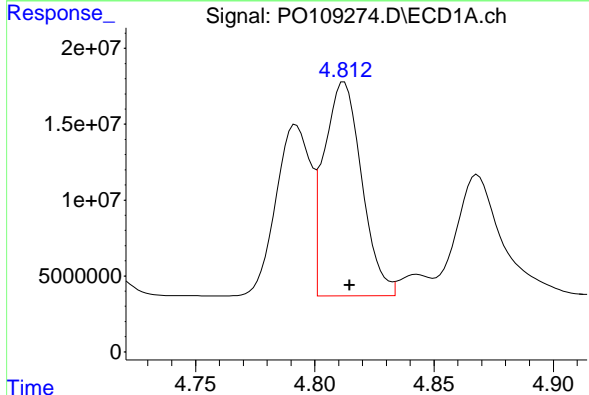
R.T.: 4.792 min  
 Delta R.T.: -0.003 min  
 Response: 114066671  
 Conc: 536.93 ng/ml

Instrument :  
 ECD\_O  
 ClientSampleId :  
 AR1242CCC500



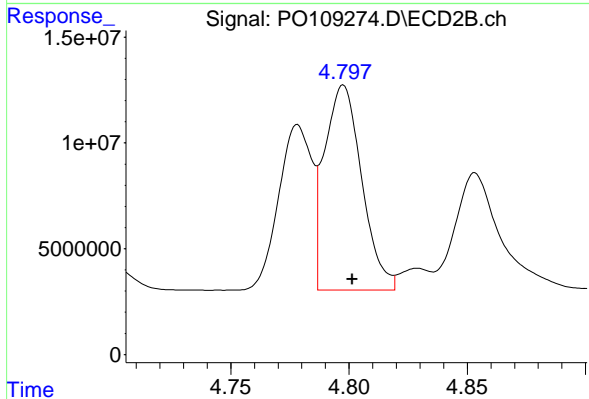
#16 AR-1242-1

R.T.: 4.778 min  
 Delta R.T.: -0.004 min  
 Response: 76546125  
 Conc: 535.62 ng/ml



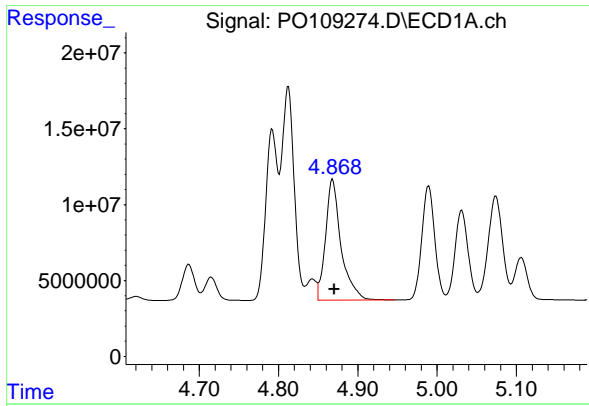
#17 AR-1242-2

R.T.: 4.812 min  
 Delta R.T.: -0.002 min  
 Response: 154765467  
 Conc: 539.77 ng/ml



#17 AR-1242-2

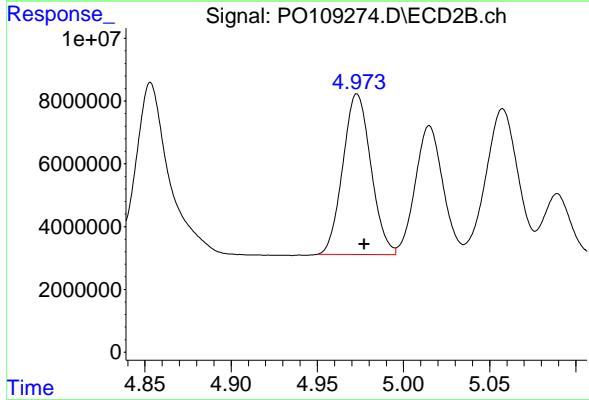
R.T.: 4.798 min  
 Delta R.T.: -0.004 min  
 Response: 106192062  
 Conc: 538.45 ng/ml



#18 AR-1242-3

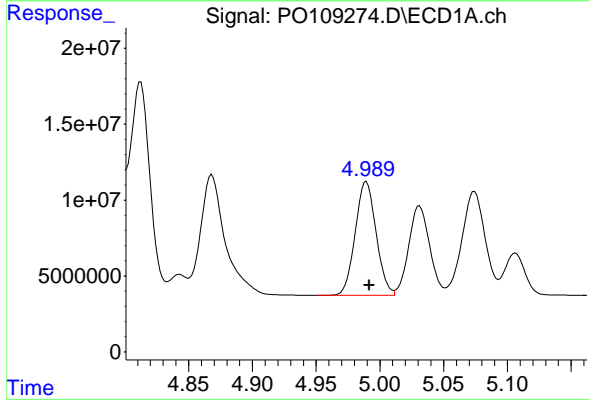
R.T.: 4.868 min  
 Delta R.T.: -0.002 min  
 Response: 108825680  
 Conc: 531.61 ng/ml

Instrument :  
 ECD\_O  
 ClientSampleId :  
 AR1242CCC500



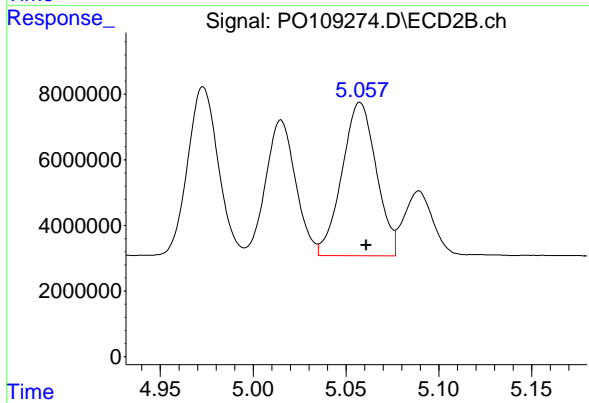
#18 AR-1242-3

R.T.: 4.973 min  
 Delta R.T.: -0.004 min  
 Response: 57961274  
 Conc: 531.55 ng/ml



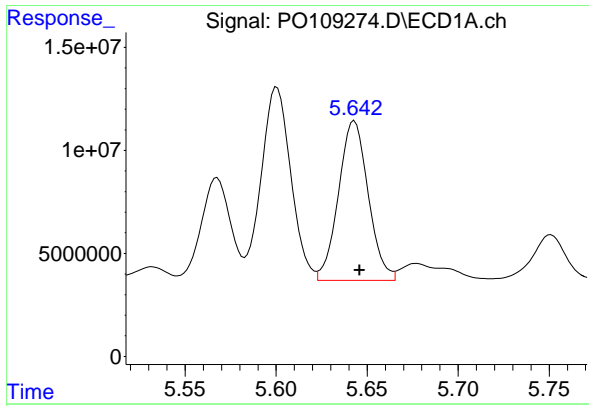
#19 AR-1242-4

R.T.: 4.989 min  
 Delta R.T.: -0.002 min  
 Response: 85322684  
 Conc: 537.06 ng/ml



#19 AR-1242-4

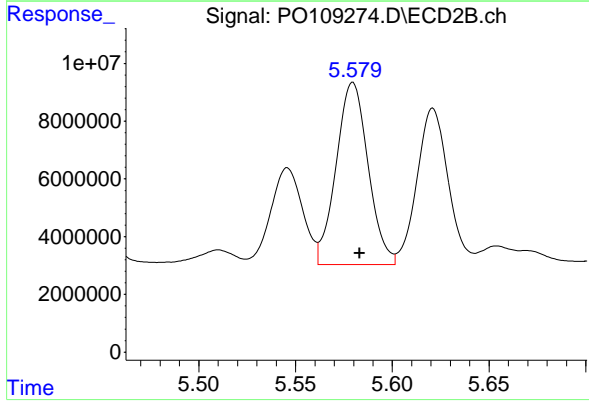
R.T.: 5.058 min  
 Delta R.T.: -0.004 min  
 Response: 60190962  
 Conc: 529.65 ng/ml



#20 AR-1242-5

R.T.: 5.643 min  
 Delta R.T.: -0.003 min  
 Response: 88258093  
 Conc: 528.39 ng/ml

Instrument :  
 ECD\_O  
 ClientSampleId :  
 AR1242CCC500



#20 AR-1242-5

R.T.: 5.580 min  
 Delta R.T.: -0.004 min  
 Response: 72572786  
 Conc: 530.55 ng/ml