

Data Path : Z:\pestpcbsrv\HPCHEM1\ECD_0\Data\P0013124\
 Data File : P0101493.D
 Signal(s) : Signal #1: ECD1A.ch Signal #2: ECD2B.ch
 Acq On : 31 Jan 2024 17:39
 Operator : YP/AJ
 Sample : PB158726BS
 Misc :
 ALS Vial : 16 Sample Multiplier: 1

Instrument :
 ECD_0
 ClientSampleId :
 PB158726BS

Integration File signal 1: autoint1.e
 Integration File signal 2: autoint2.e
 Quant Time: Feb 01 02:12:07 2024
 Quant Method : Z:\pestpcbsrv\HPCHEM1\ECD_0\methods\P0012424.M
 Quant Title : GC EXTRACTABLES
 QLast Update : Wed Jan 24 04:51:39 2024
 Response via : Initial Calibration
 Integrator: ChemStation

Volume Inj. : 2 µl
 Signal #1 Phase : ZB-MR1 Signal #2 Phase: ZB-MR2
 Signal #1 Info : 30Mx0.32mmx 0.50µ Signal #2 Info : 30M x 0.32mm x 0.25µm

Compound	RT#1	RT#2	Resp#1	Resp#2	ng/ml	ng/ml

System Monitoring Compounds						
1) SA Tetrachlo...	4.330	3.629	79255780	46884820	20.647	18.142
2) SA Decachlor...	10.054	8.672	49522427	35145143	21.253	18.546
Target Compounds						
3) L1 AR-1016-1	5.497	4.721	48335093	33674689	494.459	455.512
4) L1 AR-1016-2	5.519	4.740	69570458	46273826	505.761	469.486
5) L1 AR-1016-3	5.581	4.918	45389113	24585235	505.961	448.133
6) L1 AR-1016-4	5.680	4.959	36109138	21753111	505.220	428.056
7) L1 AR-1016-5	5.975	5.174	36256533	27061558	458.679	414.509
8) L2 AR-1221-1	4.533	3.842	5386896	3799091	128.659	132.648
9) L2 AR-1221-2	4.624	3.929	7282304	4714460	229.528	210.795
10) L2 AR-1221-3	4.701	4.006	29148489	19426791	329.191	305.634
11) L3 AR-1232-1	4.701	4.006	29148489	19426791	385.521	356.065
12) L3 AR-1232-2	5.229	4.740	39882735	46273826	877.651	962.330
13) L3 AR-1232-3	5.519	4.918	69570458	24585235	1039.319	937.630
14) L3 AR-1232-4	5.680	5.001	36109138	26402061	1008.688	948.093
15) L3 AR-1232-5	5.771	5.174	34770954	27061558	1019.178	884.960
16) L4 AR-1242-1	5.497	4.721	48335093	33674689	624.685	572.357
17) L4 AR-1242-2	5.519	4.740	69570458	46273826	642.413	596.738
18) L4 AR-1242-3	5.581	4.918	45389113	24585235	638.562	567.145
19) L4 AR-1242-4	5.680	5.001	36109138	26402061	633.980	530.431
20) L4 AR-1242-5	6.419	5.529	4566232	21420141	85.090	404.360 #
21) L5 AR-1248-1	5.497	4.721	48335093	33674689	833.911	752.589
22) L5 AR-1248-2	5.771	4.959	34770954	21753111	345.264	309.379
23) L5 AR-1248-3	5.975	5.001	36256533	26402061	349.922	362.987
24) L5 AR-1248-4	6.378	5.174	4794159	27061558	52.793	318.330 #
25) L5 AR-1248-5	6.419	5.570	4566232	3129817	51.193	45.710
26) L6 AR-1254-1	6.353	5.529	27393133	21420141	230.234	172.171 #
27) L6 AR-1254-2	6.572	5.677	28335204	20910221	166.365	186.803
28) L6 AR-1254-3	6.940	6.098	14593892	35021157	88.866	210.472 #
29) L6 AR-1254-4	7.225	6.315	8914248	3600301	89.185	42.209 #
30) L6 AR-1254-5	7.645	6.734	80241478	63356149	682.730	467.580 #
31) L7 AR-1260-1	7.104	6.214	60973124	49594950	427.543	401.922
32) L7 AR-1260-2	7.362	6.404	68406863	57615399	466.994	421.377
33) L7 AR-1260-3	7.723	6.559	44494833	52965533	381.058	412.876
34) L7 AR-1260-4	7.949	7.033	50816812	37418980	431.644	362.061
35) L7 AR-1260-5	8.266	7.276	94957817	84606081	433.026	403.060
36) L8 AR-1262-1	7.645	6.734	80241478	63356149	718.021	781.518
37) L8 AR-1262-2	8.266	7.033	94957817	37418980	349.045	251.476 #
38) L8 AR-1262-3	8.587	7.560	62375803	15302877	320.675	148.970 #
39) L8 AR-1262-4	8.661	7.624	14332038	58756759	92.306	300.895 #
40) L8 AR-1262-5	9.312	8.122	22920763	17724002	244.017	211.504
41) L9 AR-1268-1	8.587	7.560	62375803	15302877	196.695	54.744 #

Data Path : Z:\pestpcbsrv\HPCHEM1\ECD_0\Data\P0013124\
 Data File : P0101493.D
 Signal(s) : Signal #1: ECD1A.ch Signal #2: ECD2B.ch
 Acq On : 31 Jan 2024 17:39
 Operator : YP/AJ
 Sample : PB158726BS
 Misc :
 ALS Vial : 16 Sample Multiplier: 1

Instrument :
 ECD_0
ClientSampleId :
 PB158726BS

Integration File signal 1: autoint1.e
 Integration File signal 2: autoint2.e
 Quant Time: Feb 01 02:12:07 2024
 Quant Method : Z:\pestpcbsrv\HPCHEM1\ECD_0\methods\P0012424.M
 Quant Title : GC EXTRACTABLES
 QLast Update : Wed Jan 24 04:51:39 2024
 Response via : Initial Calibration
 Integrator: ChemStation

Volume Inj. : 2 µl
 Signal #1 Phase : ZB-MR1 Signal #2 Phase: ZB-MR2
 Signal #1 Info : 30Mx0.32mmx 0.50µ Signal #2 Info : 30M x 0.32mm x 0.25µm

	Compound	RT#1	RT#2	Resp#1	Resp#2	ng/ml	ng/ml
42)	L9 AR-1268-2	8.661	7.624	14332038	58756759	49.626	229.742 #
43)	L9 AR-1268-3	8.889	7.831	1779197	1475638	6.905	6.346
44)	L9 AR-1268-4	9.312	8.122	22920763	17724002	249.434	208.567
45)	L9 AR-1268-5	9.722	8.415	7961632	6039402	9.936	9.179

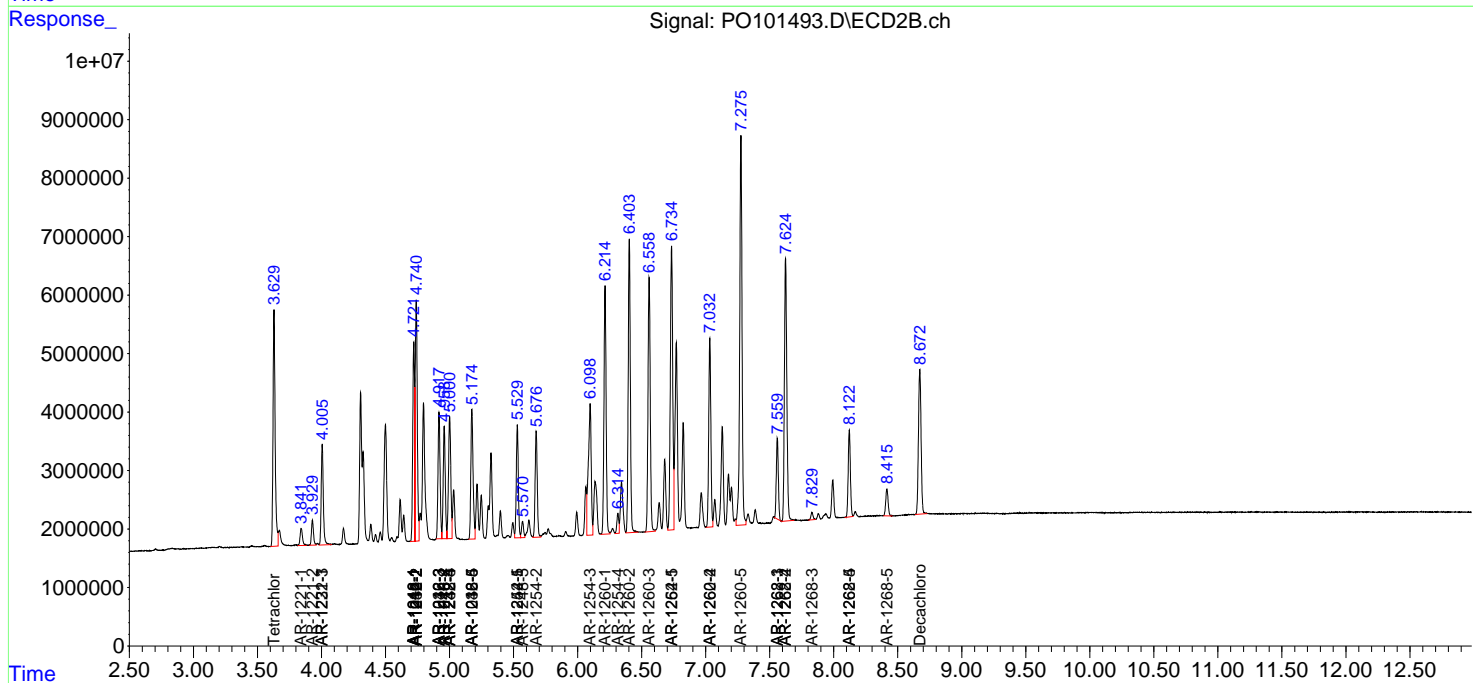
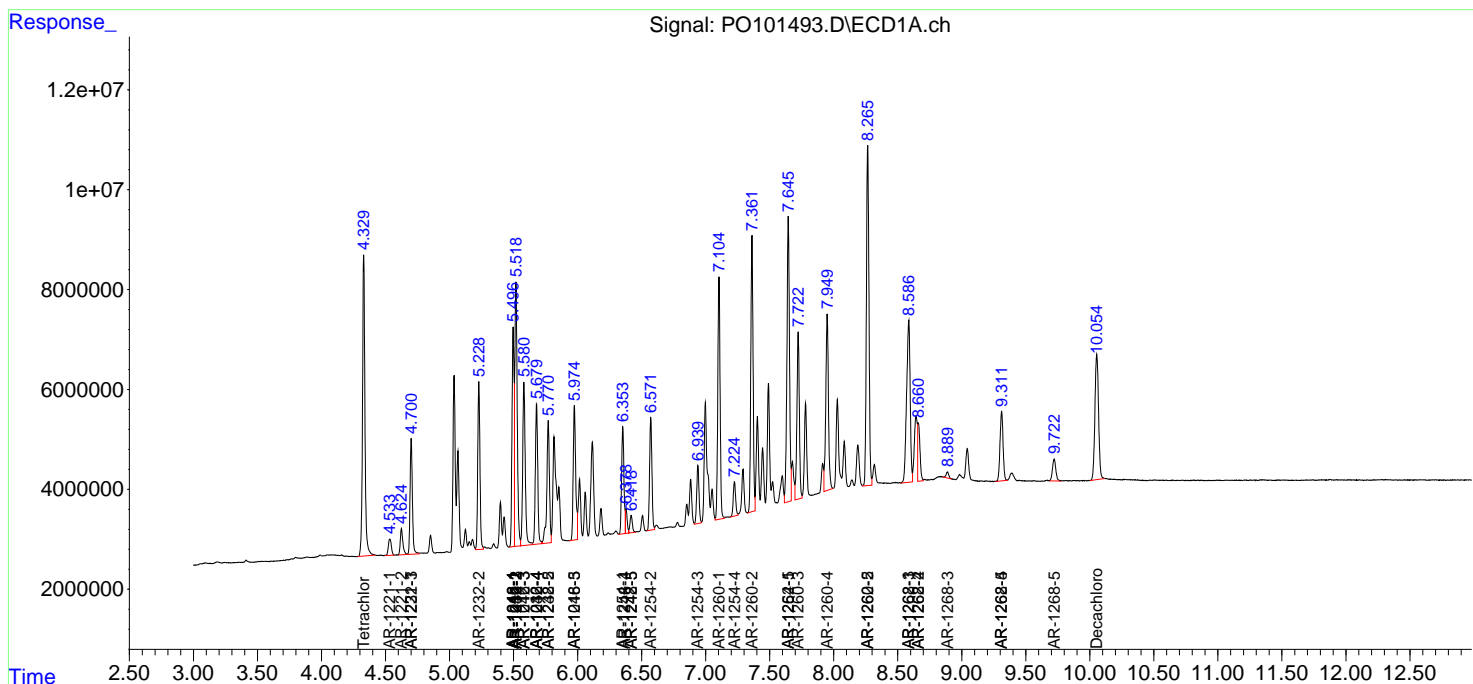
(f)=RT Delta > 1/2 Window (#)=Amounts differ by > 25% (m)=manual int.

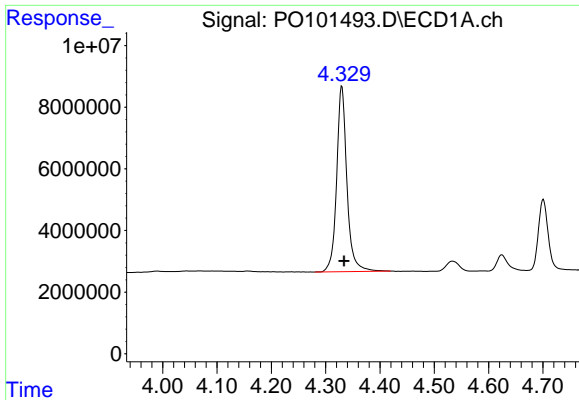
Data Path : Z:\pestpcbsrv\HPCHEM1\ECD_O\Data\PO013124\
 Data File : PO101493.D
 Signal(s) : Signal #1: ECD1A.ch Signal #2: ECD2B.ch
 Acq On : 31 Jan 2024 17:39
 Operator : YP/AJ
 Sample : PB158726BS
 Misc :
 ALS Vial : 16 Sample Multiplier: 1

Instrument :
 ECD_O
 ClientSampleId :
 PB158726BS

Integration File signal 1: autoint1.e
 Integration File signal 2: autoint2.e
 Quant Time: Feb 01 02:12:07 2024
 Quant Method : Z:\pestpcbsrv\HPCHEM1\ECD_O\methods\PO012424.M
 Quant Title : GC EXTRACTABLES
 QLast Update : Wed Jan 24 04:51:39 2024
 Response via : Initial Calibration
 Integrator: ChemStation

Volume Inj. : 2 µl
 Signal #1 Phase : ZB-MR1 Signal #2 Phase: ZB-MR2
 Signal #1 Info : 30Mx0.32mmx 0.50µ Signal #2 Info : 30M x 0.32mm x 0.25µm

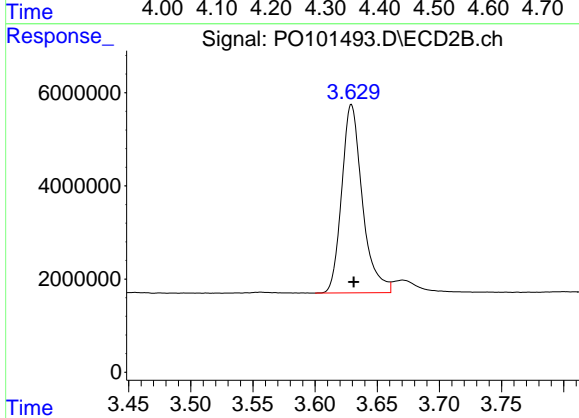




#1 Tetrachloro-m-xylene

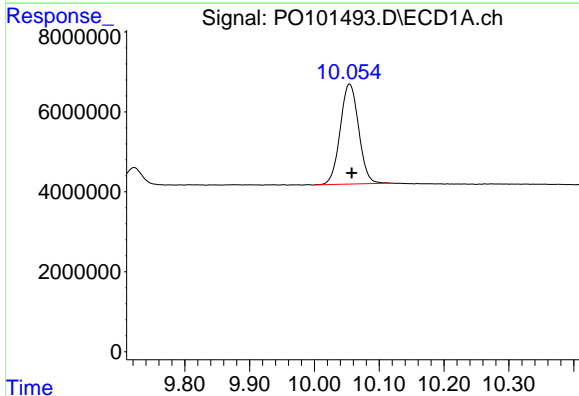
R.T.: 4.330 min
 Delta R.T.: -0.004 min
 Response: 79255780
 Conc: 20.65 ng/ml

Instrument :
 ECD_O
 ClientSampleId :
 PB158726BS



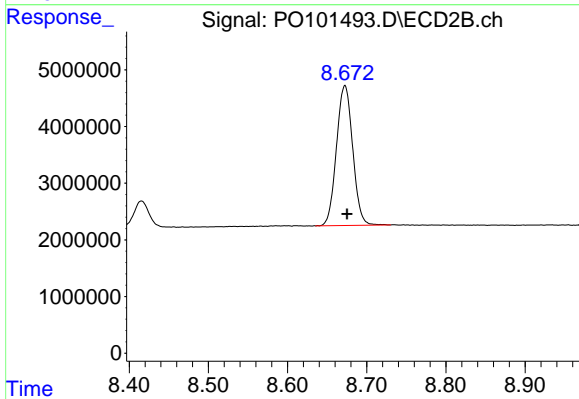
#1 Tetrachloro-m-xylene

R.T.: 3.629 min
 Delta R.T.: -0.002 min
 Response: 46884820
 Conc: 18.14 ng/ml



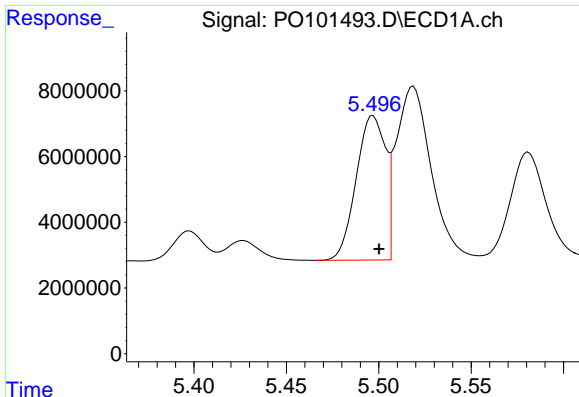
#2 Decachlorobiphenyl

R.T.: 10.054 min
 Delta R.T.: -0.003 min
 Response: 49522427
 Conc: 21.25 ng/ml



#2 Decachlorobiphenyl

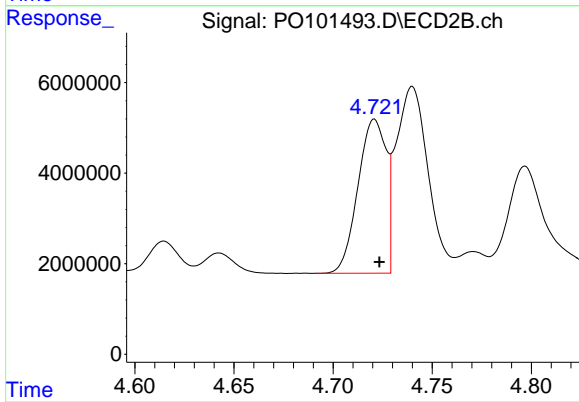
R.T.: 8.672 min
 Delta R.T.: -0.003 min
 Response: 35145143
 Conc: 18.55 ng/ml



#3 AR-1016-1

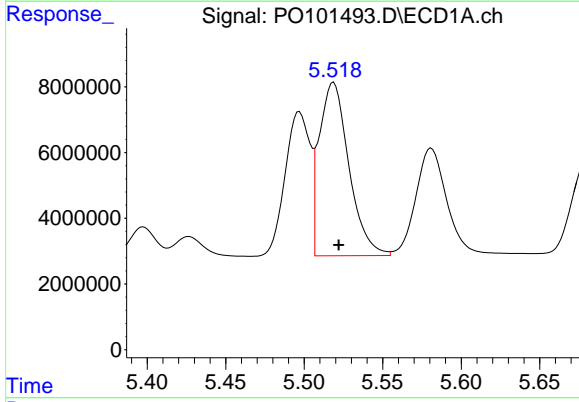
R.T.: 5.497 min
 Delta R.T.: -0.003 min
 Response: 48335093
 Conc: 494.46 ng/ml

Instrument :
 ECD_O
 ClientSampleId :
 PB158726BS



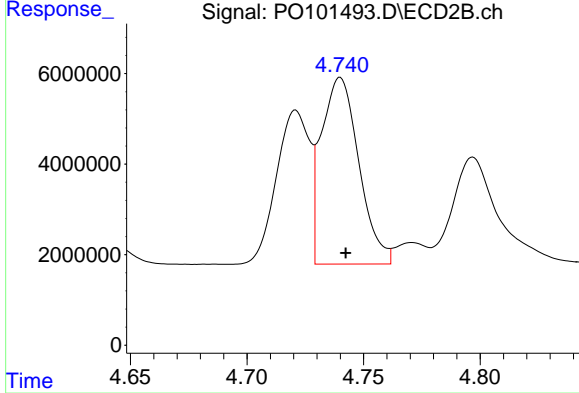
#3 AR-1016-1

R.T.: 4.721 min
 Delta R.T.: -0.003 min
 Response: 33674689
 Conc: 455.51 ng/ml



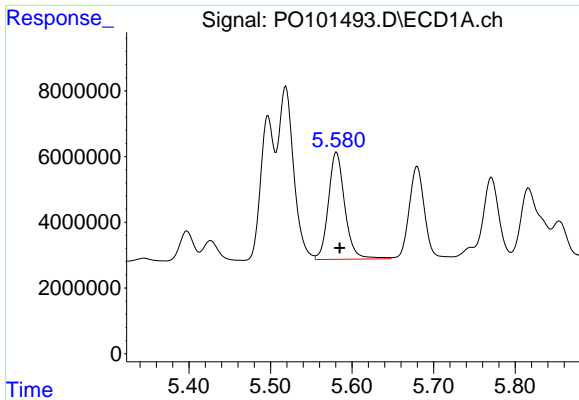
#4 AR-1016-2

R.T.: 5.519 min
 Delta R.T.: -0.003 min
 Response: 69570458
 Conc: 505.76 ng/ml



#4 AR-1016-2

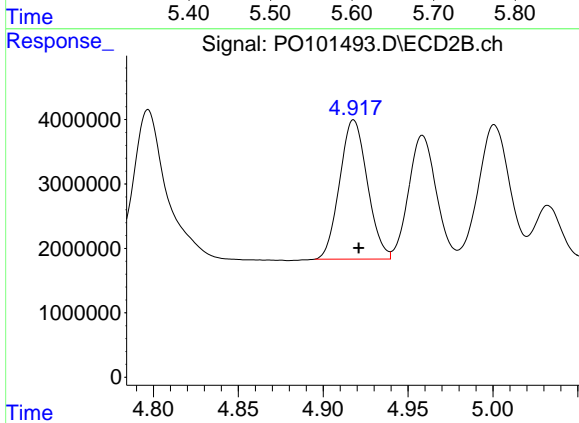
R.T.: 4.740 min
 Delta R.T.: -0.002 min
 Response: 46273826
 Conc: 469.49 ng/ml



#5 AR-1016-3

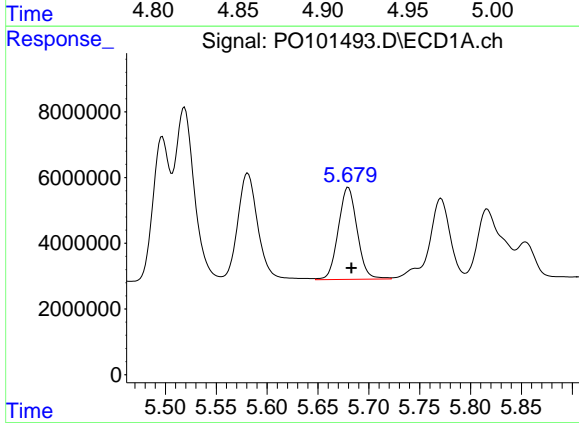
R.T.: 5.581 min
 Delta R.T.: -0.004 min
 Response: 45389113
 Conc: 505.96 ng/ml

Instrument :
 ECD_O
 ClientSampleId :
 PB158726BS



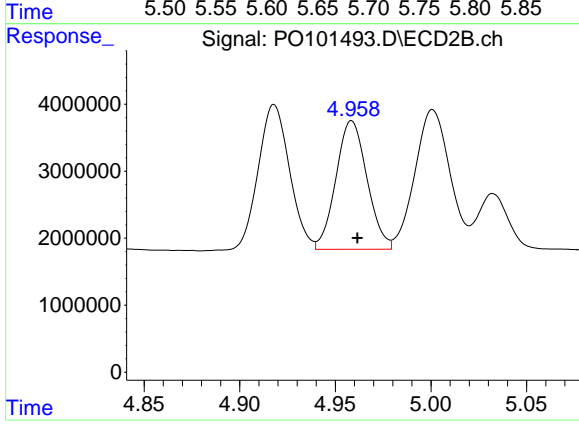
#5 AR-1016-3

R.T.: 4.918 min
 Delta R.T.: -0.003 min
 Response: 24585235
 Conc: 448.13 ng/ml



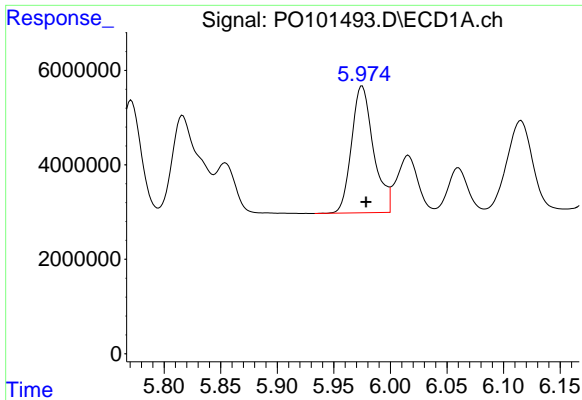
#6 AR-1016-4

R.T.: 5.680 min
 Delta R.T.: -0.003 min
 Response: 36109138
 Conc: 505.22 ng/ml



#6 AR-1016-4

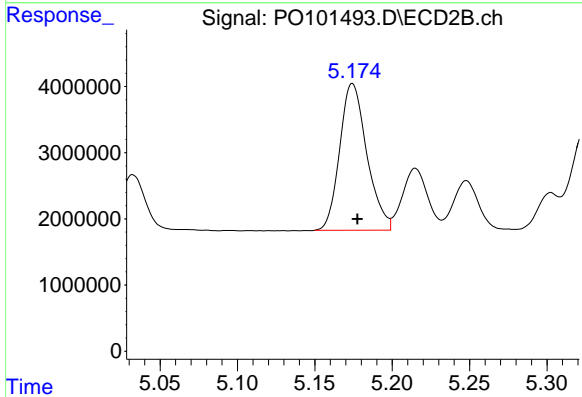
R.T.: 4.959 min
 Delta R.T.: -0.003 min
 Response: 21753111
 Conc: 428.06 ng/ml



#7 AR-1016-5

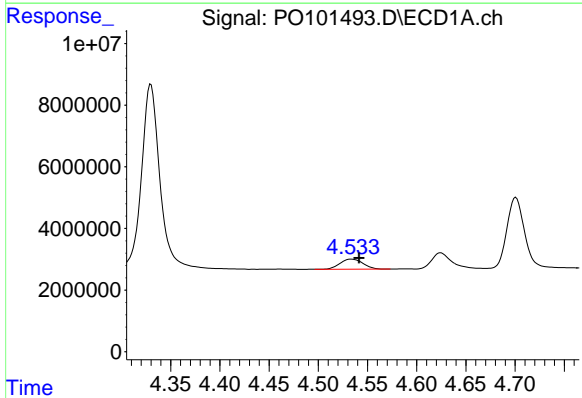
R.T.: 5.975 min
 Delta R.T.: -0.004 min
 Response: 36256533
 Conc: 458.68 ng/ml

Instrument :
 ECD_O
 ClientSampleId :
 PB158726BS



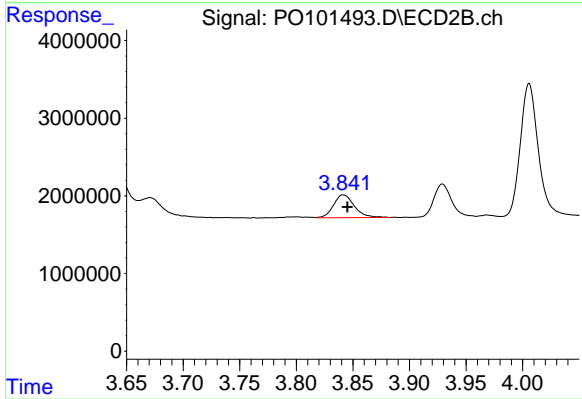
#7 AR-1016-5

R.T.: 5.174 min
 Delta R.T.: -0.003 min
 Response: 27061558
 Conc: 414.51 ng/ml



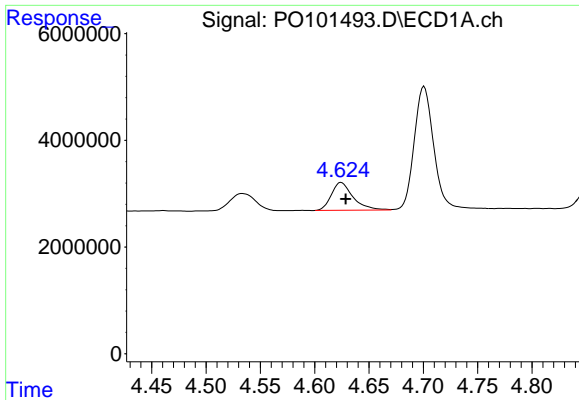
#8 AR-1221-1

R.T.: 4.533 min
 Delta R.T.: -0.008 min
 Response: 5386896
 Conc: 128.66 ng/ml



#8 AR-1221-1

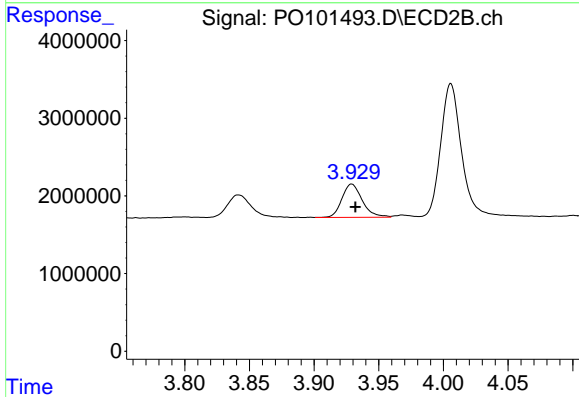
R.T.: 3.842 min
 Delta R.T.: -0.004 min
 Response: 3799091
 Conc: 132.65 ng/ml



#9 AR-1221-2

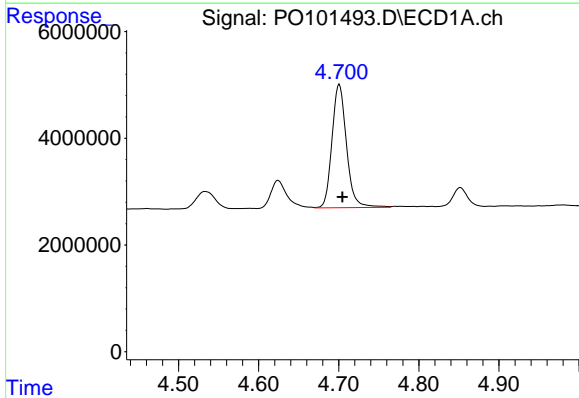
R.T.: 4.624 min
 Delta R.T.: -0.004 min
 Response: 7282304
 Conc: 229.53 ng/ml

Instrument :
 ECD_O
 ClientSampleId :
 PB158726BS



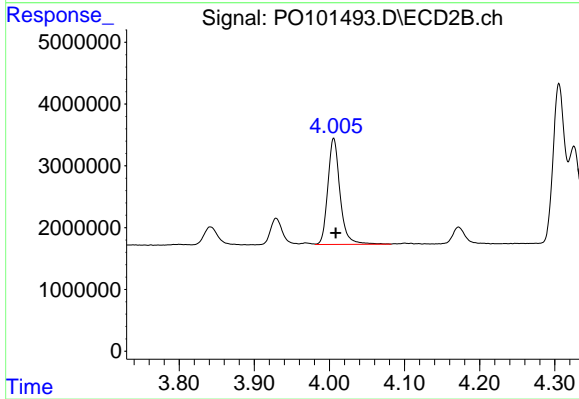
#9 AR-1221-2

R.T.: 3.929 min
 Delta R.T.: -0.003 min
 Response: 4714460
 Conc: 210.80 ng/ml



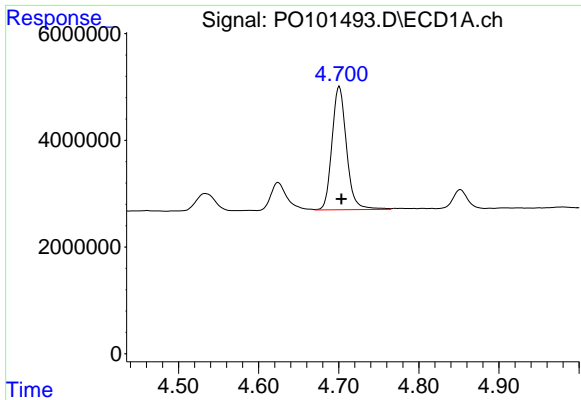
#10 AR-1221-3

R.T.: 4.701 min
 Delta R.T.: -0.004 min
 Response: 29148489
 Conc: 329.19 ng/ml



#10 AR-1221-3

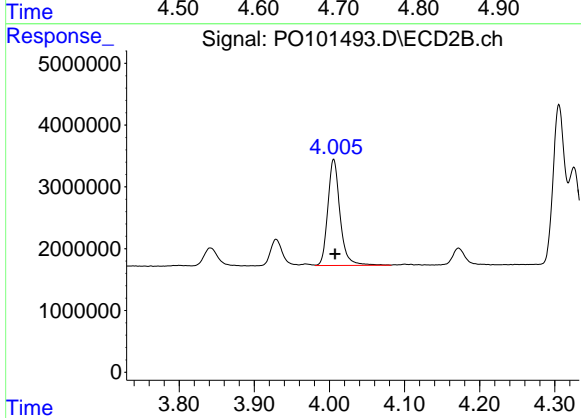
R.T.: 4.006 min
 Delta R.T.: -0.003 min
 Response: 19426791
 Conc: 305.63 ng/ml



#11 AR-1232-1

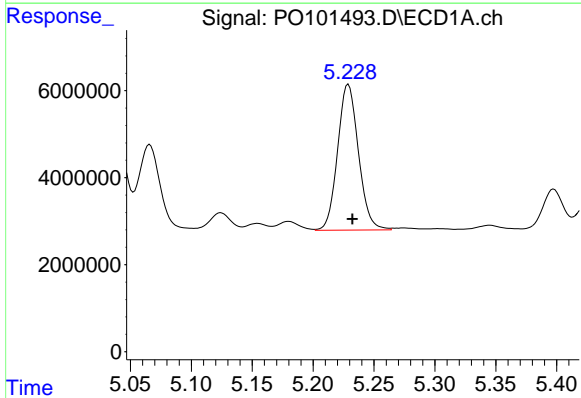
R.T.: 4.701 min
 Delta R.T.: -0.003 min
 Response: 29148489
 Conc: 385.52 ng/ml

Instrument :
 ECD_O
 ClientSampleId :
 PB158726BS



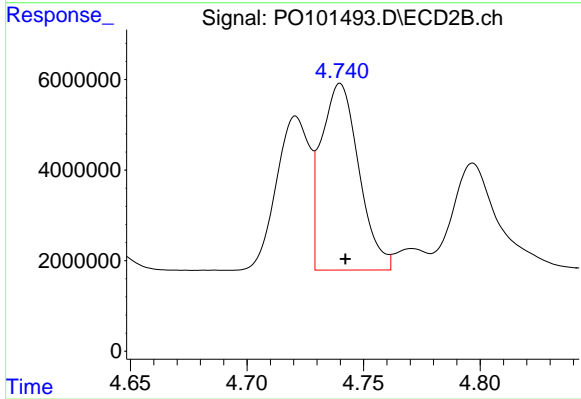
#11 AR-1232-1

R.T.: 4.006 min
 Delta R.T.: -0.002 min
 Response: 19426791
 Conc: 356.06 ng/ml



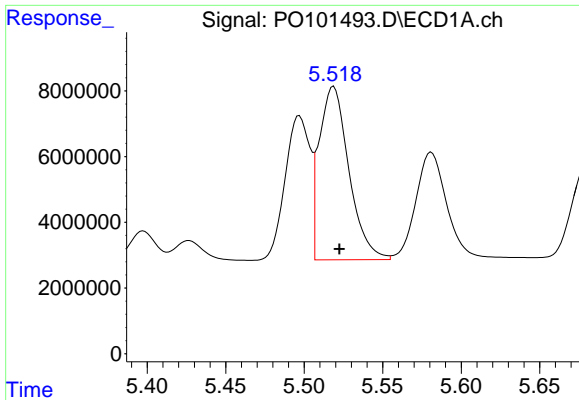
#12 AR-1232-2

R.T.: 5.229 min
 Delta R.T.: -0.003 min
 Response: 39882735
 Conc: 877.65 ng/ml



#12 AR-1232-2

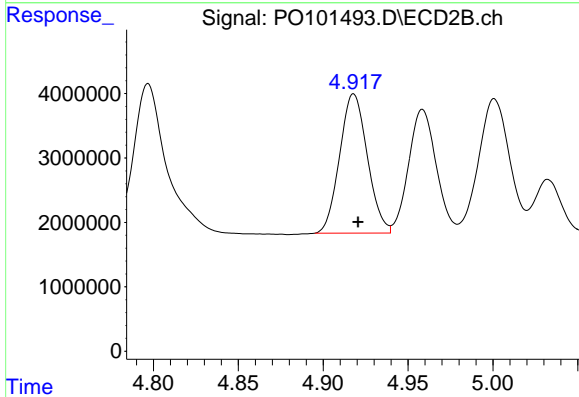
R.T.: 4.740 min
 Delta R.T.: -0.002 min
 Response: 46273826
 Conc: 962.33 ng/ml



#13 AR-1232-3

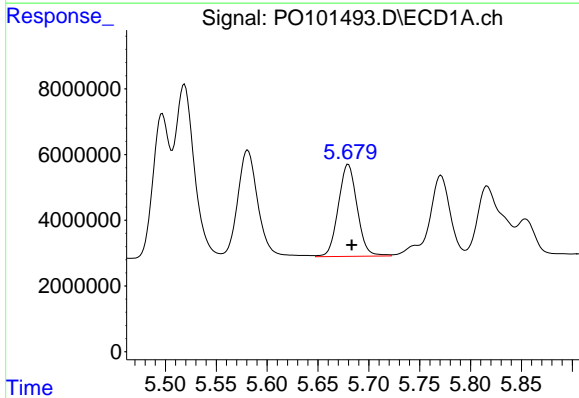
R.T.: 5.519 min
 Delta R.T.: -0.004 min
 Response: 69570458
 Conc: 1039.32 ng/ml

Instrument :
 ECD_O
 ClientSampleId :
 PB158726BS



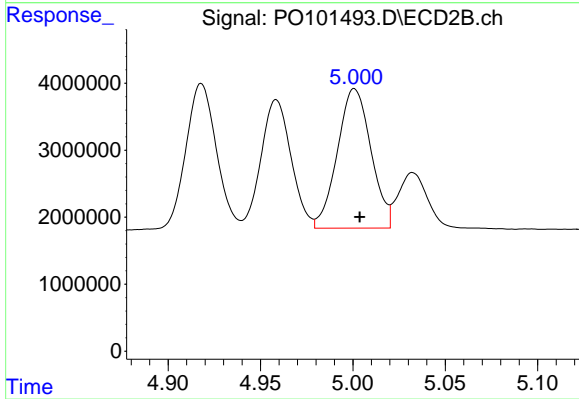
#13 AR-1232-3

R.T.: 4.918 min
 Delta R.T.: -0.003 min
 Response: 24585235
 Conc: 937.63 ng/ml



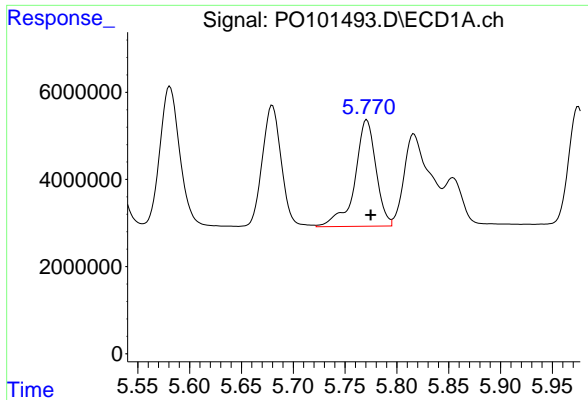
#14 AR-1232-4

R.T.: 5.680 min
 Delta R.T.: -0.003 min
 Response: 36109138
 Conc: 1008.69 ng/ml



#14 AR-1232-4

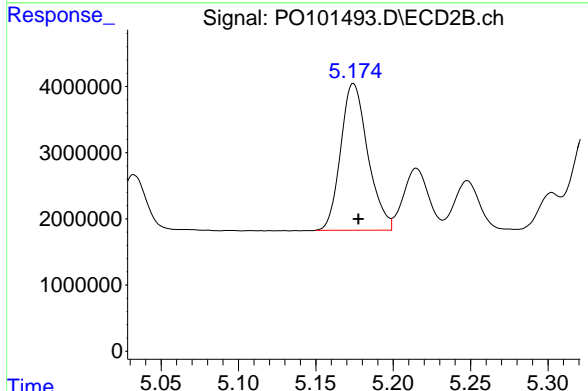
R.T.: 5.001 min
 Delta R.T.: -0.003 min
 Response: 26402061
 Conc: 948.09 ng/ml



#15 AR-1232-5

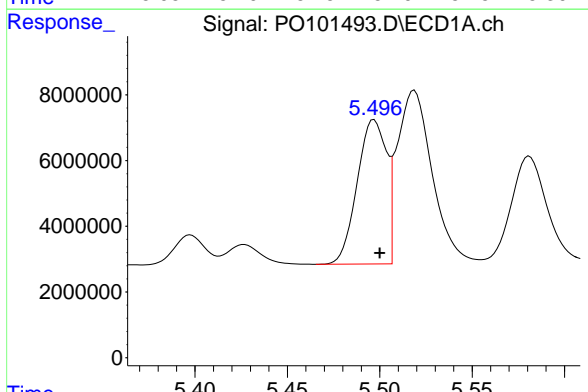
R.T.: 5.771 min
 Delta R.T.: -0.004 min
 Response: 34770954
 Conc: 1019.18 ng/ml

Instrument :
 ECD_O
 ClientSampleId :
 PB158726BS



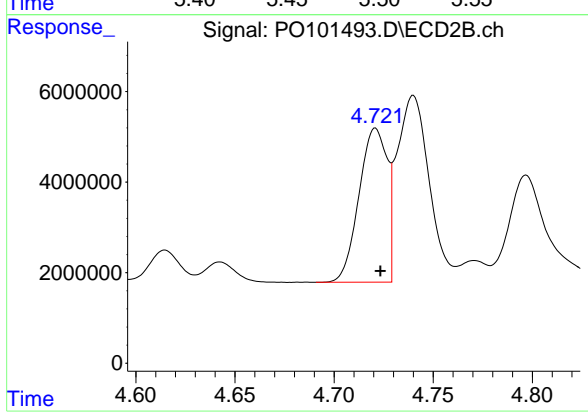
#15 AR-1232-5

R.T.: 5.174 min
 Delta R.T.: -0.003 min
 Response: 27061558
 Conc: 884.96 ng/ml



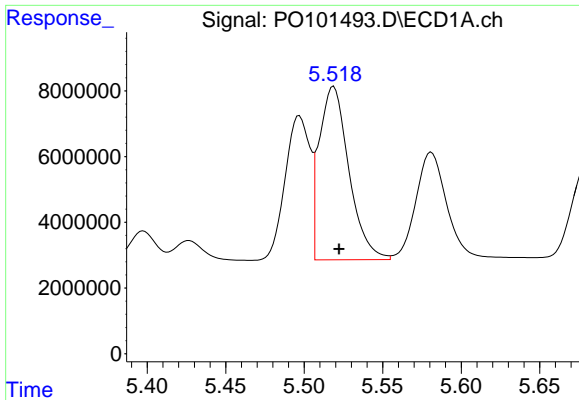
#16 AR-1242-1

R.T.: 5.497 min
 Delta R.T.: -0.003 min
 Response: 48335093
 Conc: 624.69 ng/ml



#16 AR-1242-1

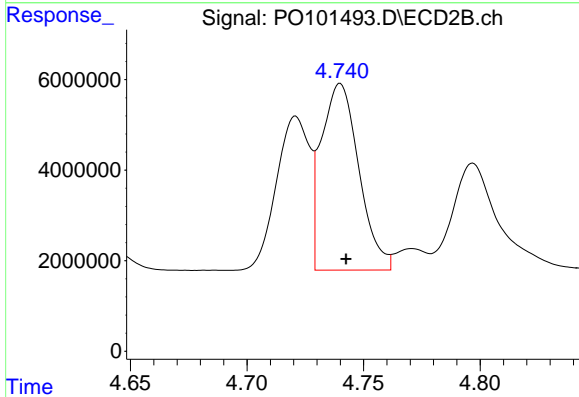
R.T.: 4.721 min
 Delta R.T.: -0.003 min
 Response: 33674689
 Conc: 572.36 ng/ml



#17 AR-1242-2

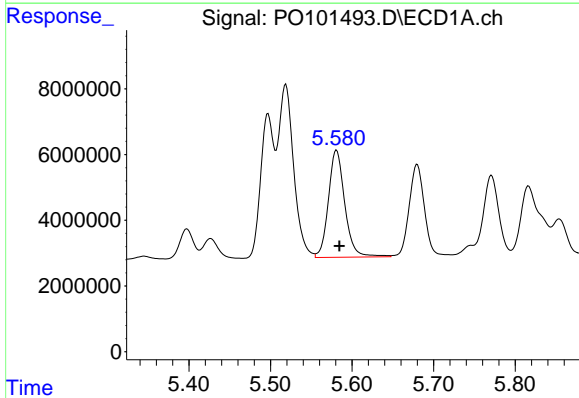
R.T.: 5.519 min
 Delta R.T.: -0.003 min
 Response: 69570458
 Conc: 642.41 ng/ml

Instrument :
 ECD_O
 ClientSampleId :
 PB158726BS



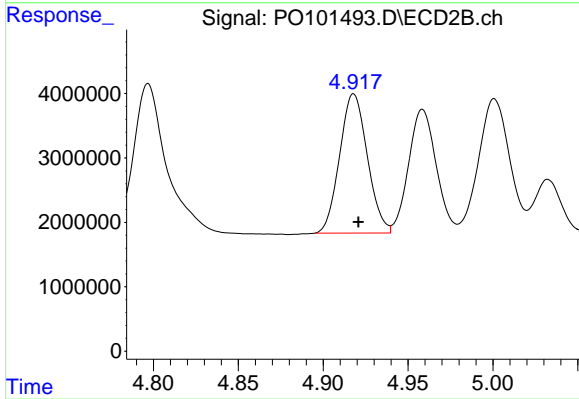
#17 AR-1242-2

R.T.: 4.740 min
 Delta R.T.: -0.002 min
 Response: 46273826
 Conc: 596.74 ng/ml



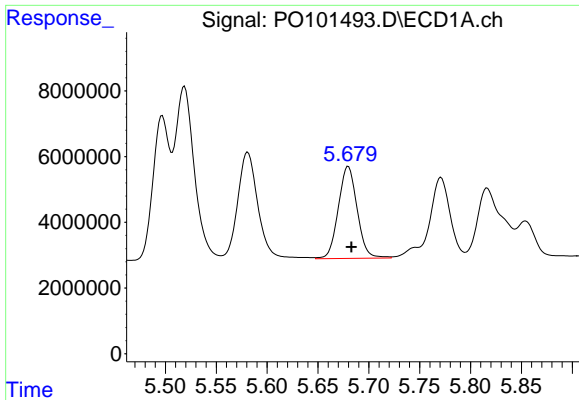
#18 AR-1242-3

R.T.: 5.581 min
 Delta R.T.: -0.003 min
 Response: 45389113
 Conc: 638.56 ng/ml



#18 AR-1242-3

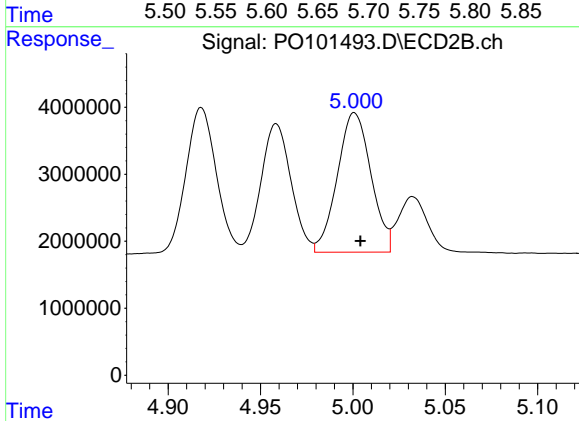
R.T.: 4.918 min
 Delta R.T.: -0.003 min
 Response: 24585235
 Conc: 567.15 ng/ml



#19 AR-1242-4

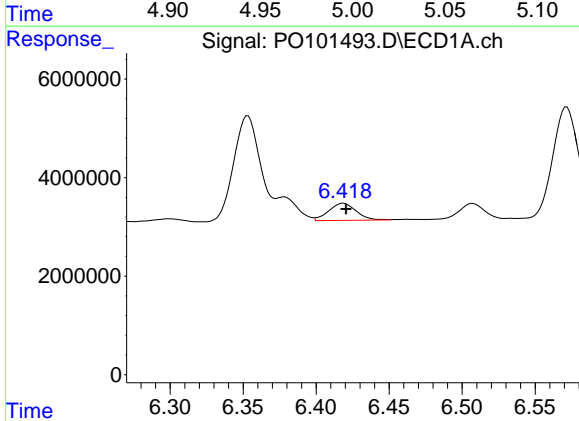
R.T.: 5.680 min
 Delta R.T.: -0.003 min
 Response: 36109138
 Conc: 633.98 ng/ml

Instrument :
 ECD_O
 ClientSampleId :
 PB158726BS



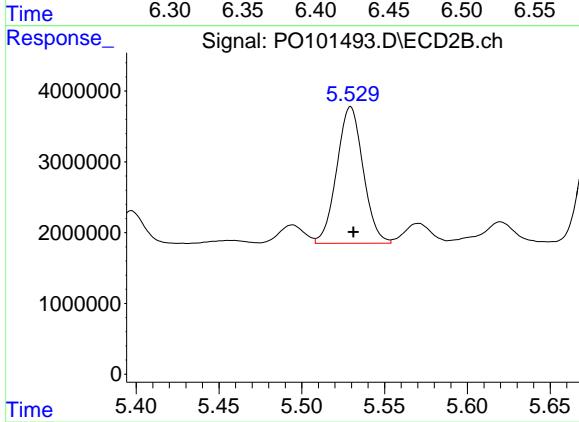
#19 AR-1242-4

R.T.: 5.001 min
 Delta R.T.: -0.003 min
 Response: 26402061
 Conc: 530.43 ng/ml



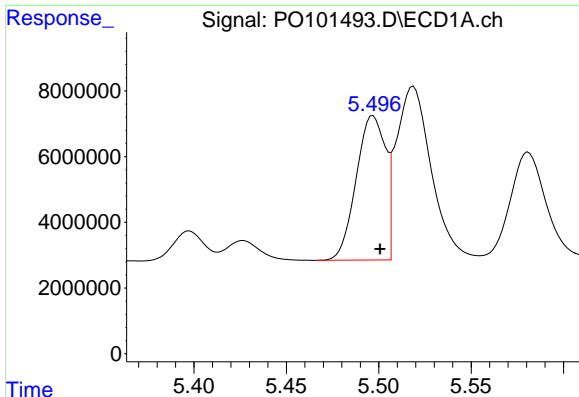
#20 AR-1242-5

R.T.: 6.419 min
 Delta R.T.: -0.002 min
 Response: 4566232
 Conc: 85.09 ng/ml



#20 AR-1242-5

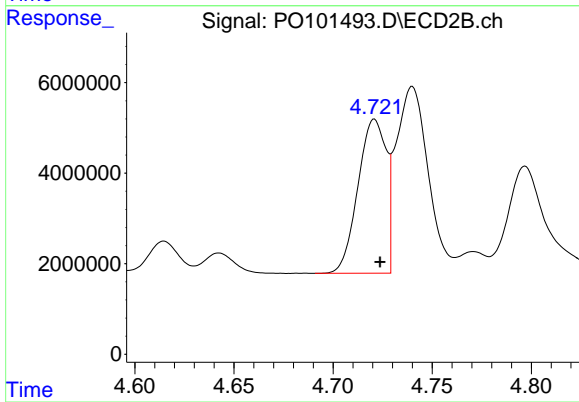
R.T.: 5.529 min
 Delta R.T.: -0.002 min
 Response: 21420141
 Conc: 404.36 ng/ml



#21 AR-1248-1

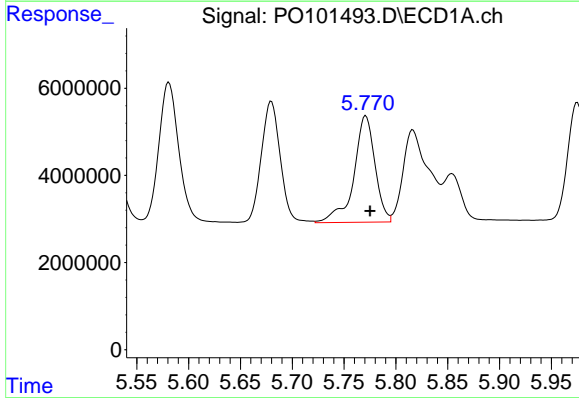
R.T.: 5.497 min
 Delta R.T.: -0.004 min
 Response: 48335093
 Conc: 833.91 ng/ml

Instrument :
 ECD_O
 ClientSampleId :
 PB158726BS



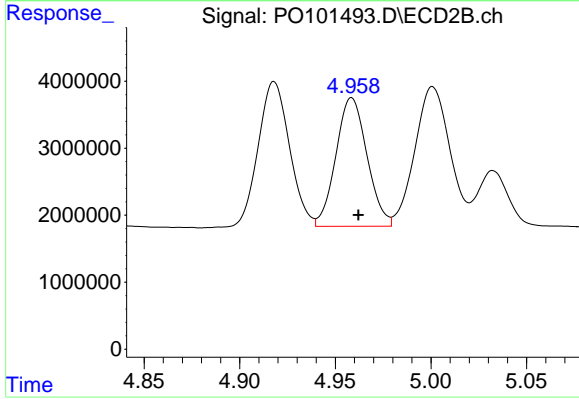
#21 AR-1248-1

R.T.: 4.721 min
 Delta R.T.: -0.003 min
 Response: 33674689
 Conc: 752.59 ng/ml



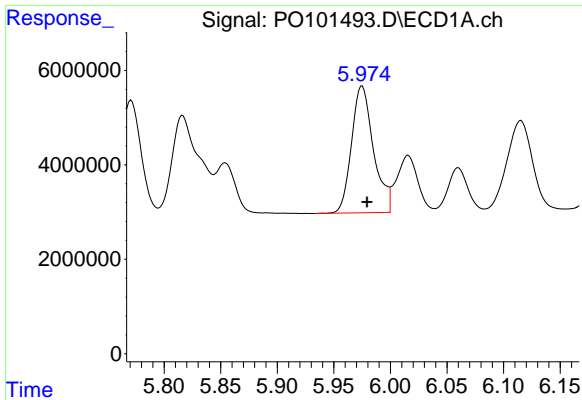
#22 AR-1248-2

R.T.: 5.771 min
 Delta R.T.: -0.004 min
 Response: 34770954
 Conc: 345.26 ng/ml



#22 AR-1248-2

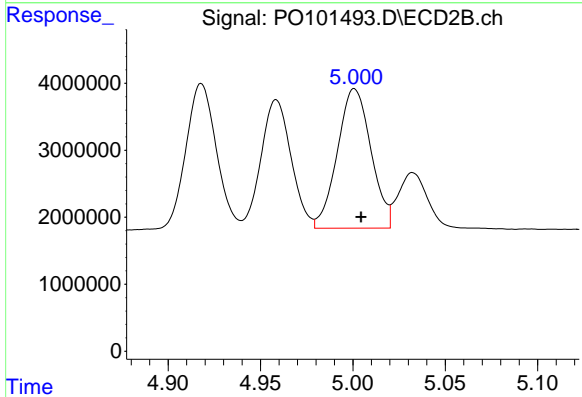
R.T.: 4.959 min
 Delta R.T.: -0.004 min
 Response: 21753111
 Conc: 309.38 ng/ml



#23 AR-1248-3

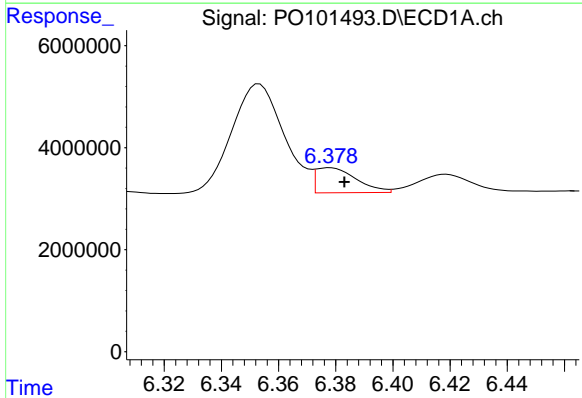
R.T.: 5.975 min
 Delta R.T.: -0.004 min
 Response: 36256533
 Conc: 349.92 ng/ml

Instrument :
 ECD_O
 ClientSampleId :
 PB158726BS



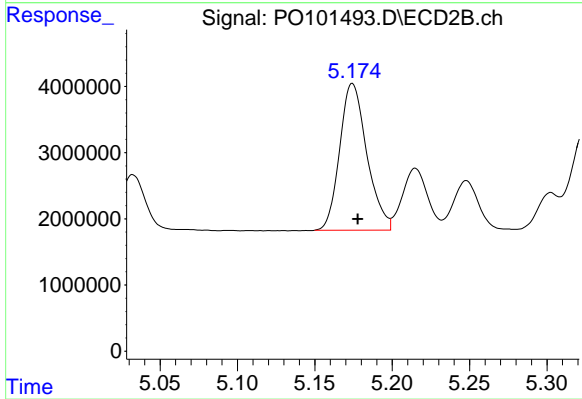
#23 AR-1248-3

R.T.: 5.001 min
 Delta R.T.: -0.004 min
 Response: 26402061
 Conc: 362.99 ng/ml



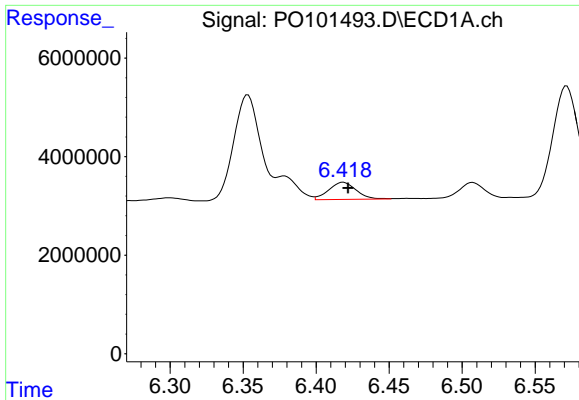
#24 AR-1248-4

R.T.: 6.378 min
 Delta R.T.: -0.005 min
 Response: 4794159
 Conc: 52.79 ng/ml



#24 AR-1248-4

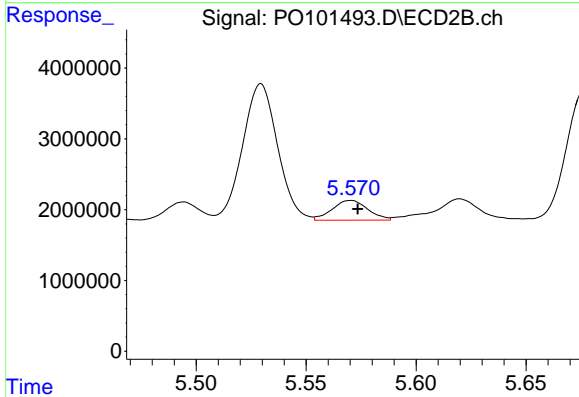
R.T.: 5.174 min
 Delta R.T.: -0.003 min
 Response: 27061558
 Conc: 318.33 ng/ml



#25 AR-1248-5

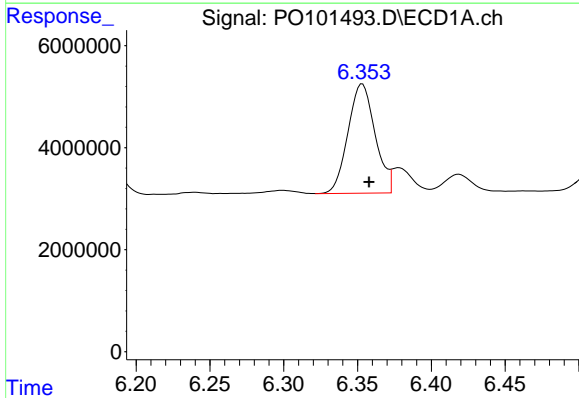
R.T.: 6.419 min
 Delta R.T.: -0.003 min
 Response: 4566232
 Conc: 51.19 ng/ml

Instrument :
 ECD_O
 ClientSampleId :
 PB158726BS



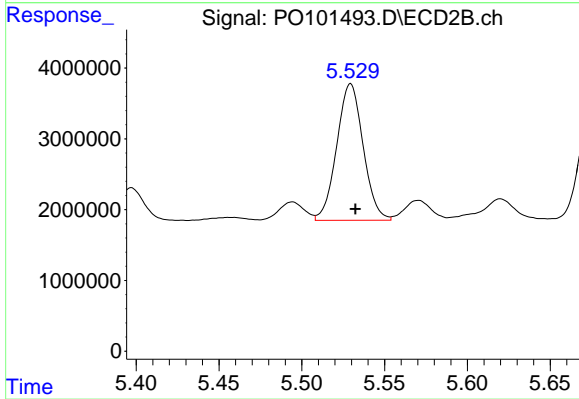
#25 AR-1248-5

R.T.: 5.570 min
 Delta R.T.: -0.003 min
 Response: 3129817
 Conc: 45.71 ng/ml



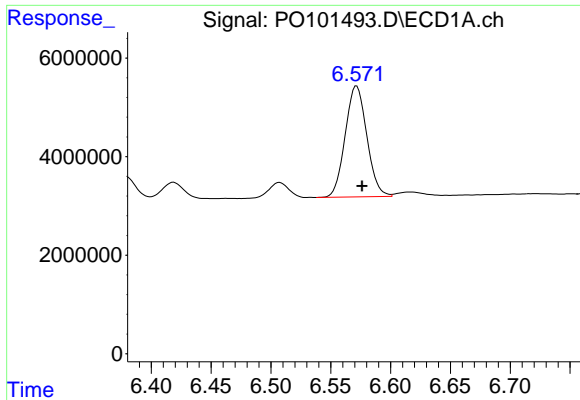
#26 AR-1254-1

R.T.: 6.353 min
 Delta R.T.: -0.004 min
 Response: 27393133
 Conc: 230.23 ng/ml



#26 AR-1254-1

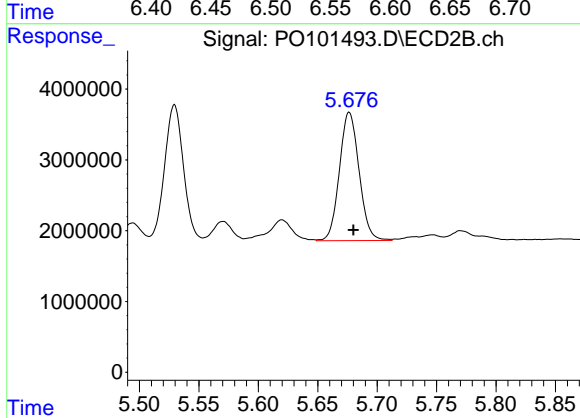
R.T.: 5.529 min
 Delta R.T.: -0.003 min
 Response: 21420141
 Conc: 172.17 ng/ml



#27 AR-1254-2

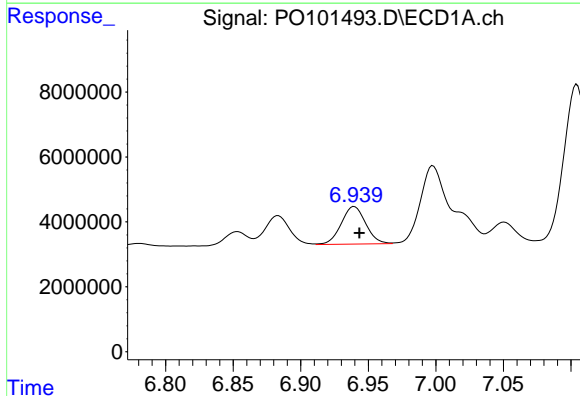
R.T.: 6.572 min
 Delta R.T.: -0.005 min
 Response: 28335204
 Conc: 166.36 ng/ml

Instrument :
 ECD_O
 ClientSampleId :
 PB158726BS



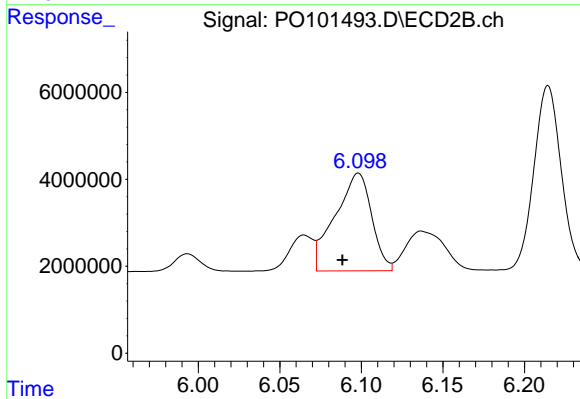
#27 AR-1254-2

R.T.: 5.677 min
 Delta R.T.: -0.004 min
 Response: 20910221
 Conc: 186.80 ng/ml



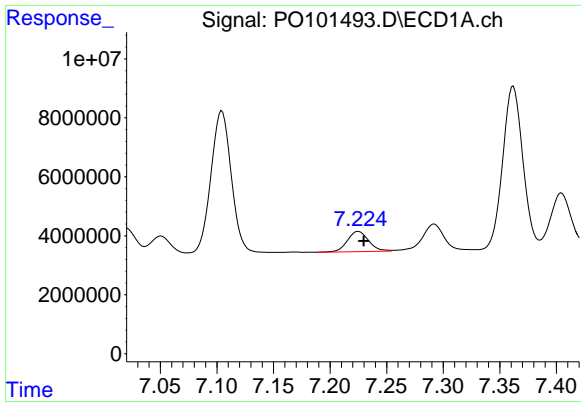
#28 AR-1254-3

R.T.: 6.940 min
 Delta R.T.: -0.004 min
 Response: 14593892
 Conc: 88.87 ng/ml



#28 AR-1254-3

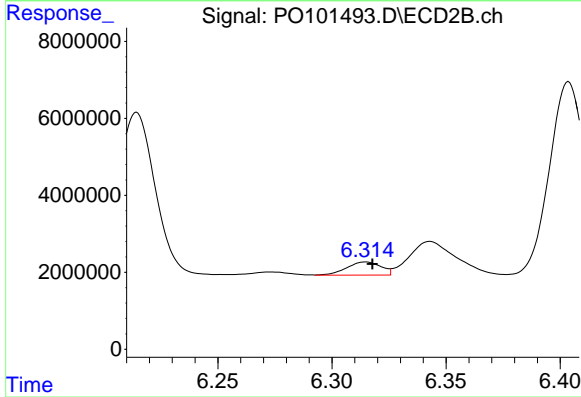
R.T.: 6.098 min
 Delta R.T.: 0.010 min
 Response: 35021157
 Conc: 210.47 ng/ml



#29 AR-1254-4

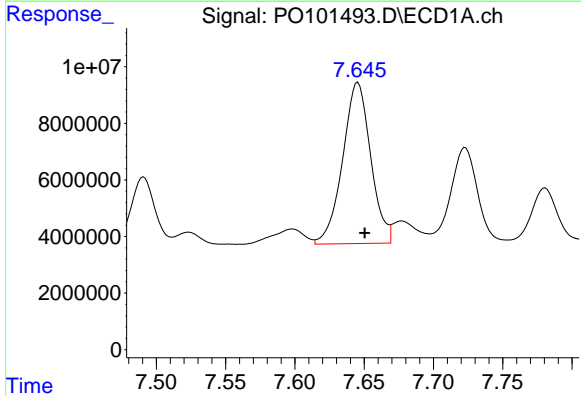
R.T.: 7.225 min
 Delta R.T.: -0.005 min
 Response: 8914248
 Conc: 89.18 ng/ml

Instrument :
 ECD_O
 ClientSampleId :
 PB158726BS



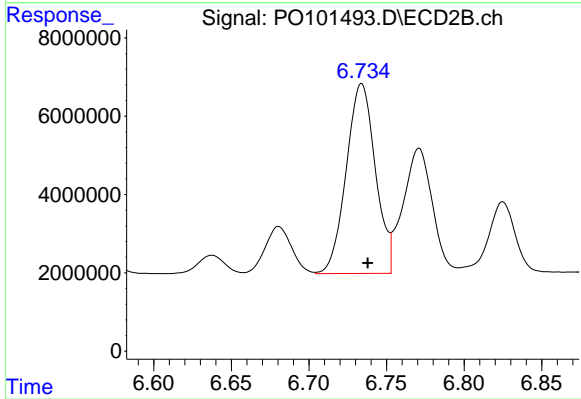
#29 AR-1254-4

R.T.: 6.315 min
 Delta R.T.: -0.003 min
 Response: 3600301
 Conc: 42.21 ng/ml



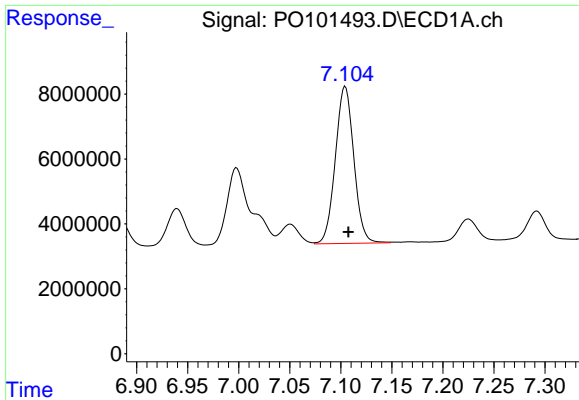
#30 AR-1254-5

R.T.: 7.645 min
 Delta R.T.: -0.005 min
 Response: 80241478
 Conc: 682.73 ng/ml



#30 AR-1254-5

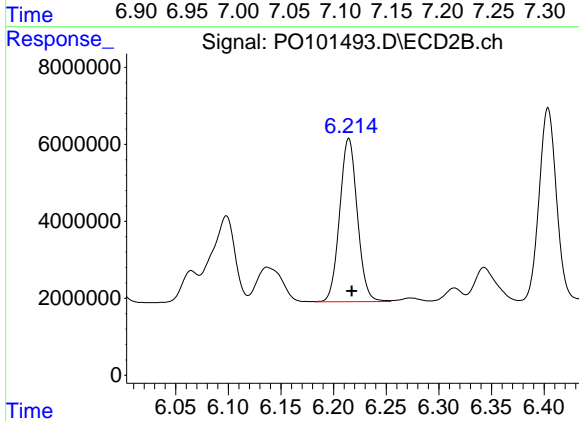
R.T.: 6.734 min
 Delta R.T.: -0.004 min
 Response: 63356149
 Conc: 467.58 ng/ml



#31 AR-1260-1

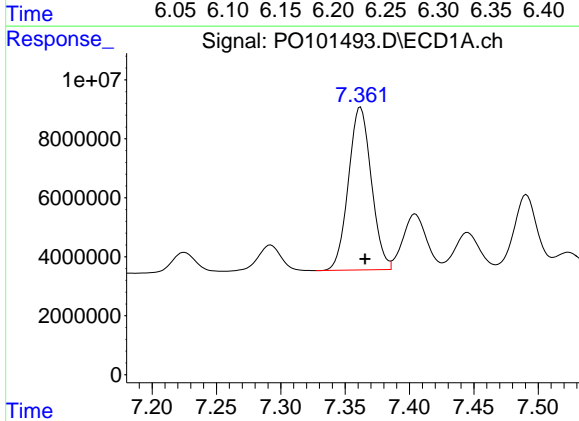
R.T.: 7.104 min
 Delta R.T.: -0.003 min
 Response: 60973124
 Conc: 427.54 ng/ml

Instrument :
 ECD_O
 ClientSampleId :
 PB158726BS



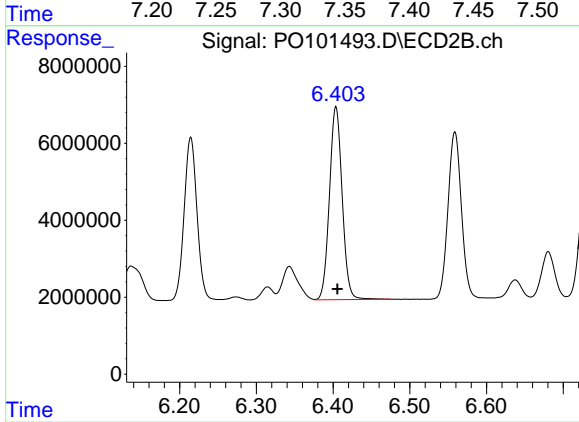
#31 AR-1260-1

R.T.: 6.214 min
 Delta R.T.: -0.003 min
 Response: 49594950
 Conc: 401.92 ng/ml



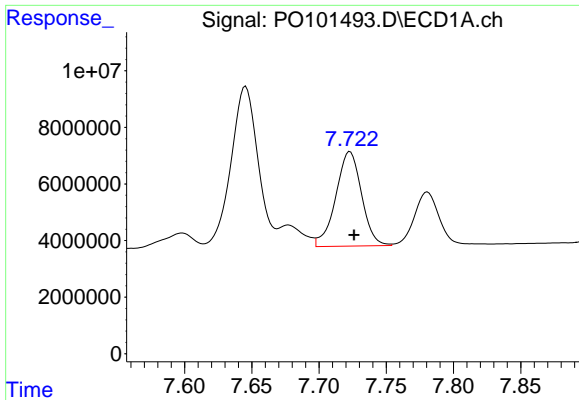
#32 AR-1260-2

R.T.: 7.362 min
 Delta R.T.: -0.004 min
 Response: 68406863
 Conc: 466.99 ng/ml



#32 AR-1260-2

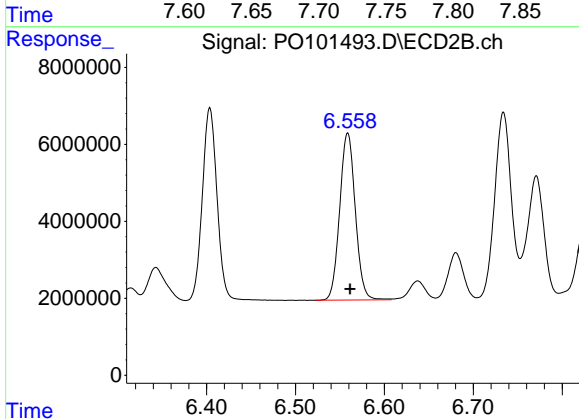
R.T.: 6.404 min
 Delta R.T.: -0.002 min
 Response: 57615399
 Conc: 421.38 ng/ml



#33 AR-1260-3

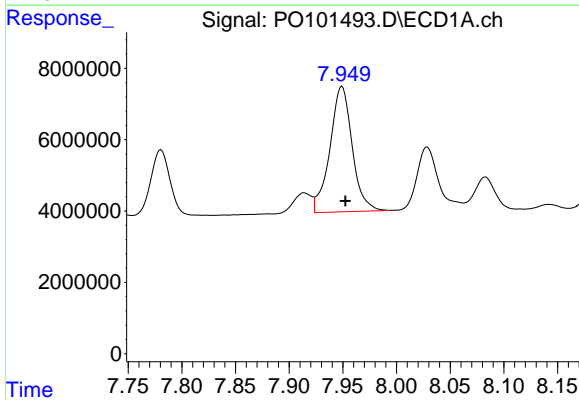
R.T.: 7.723 min
 Delta R.T.: -0.003 min
 Response: 44494833
 Conc: 381.06 ng/ml

Instrument :
 ECD_O
 ClientSampleId :
 PB158726BS



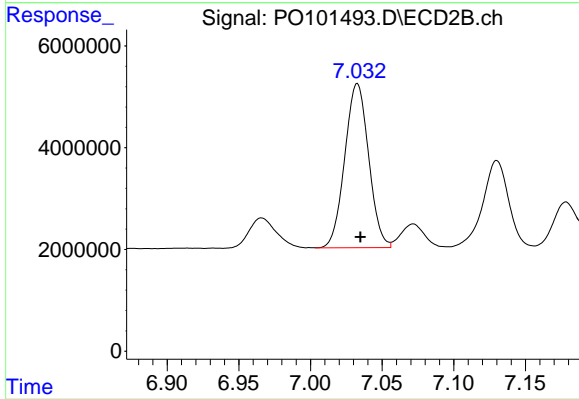
#33 AR-1260-3

R.T.: 6.559 min
 Delta R.T.: -0.003 min
 Response: 52965533
 Conc: 412.88 ng/ml



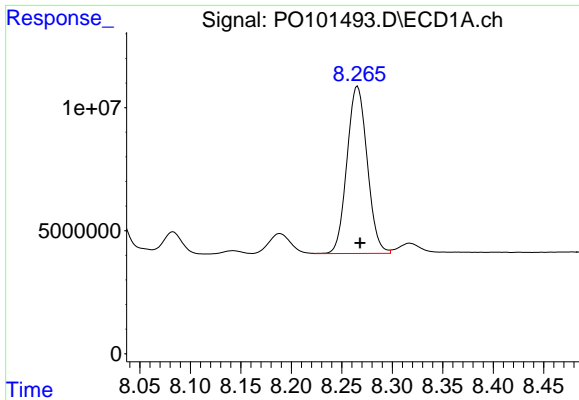
#34 AR-1260-4

R.T.: 7.949 min
 Delta R.T.: -0.003 min
 Response: 50816812
 Conc: 431.64 ng/ml



#34 AR-1260-4

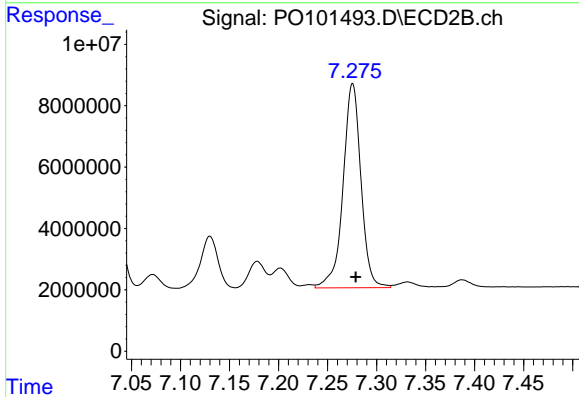
R.T.: 7.033 min
 Delta R.T.: -0.002 min
 Response: 37418980
 Conc: 362.06 ng/ml



#35 AR-1260-5

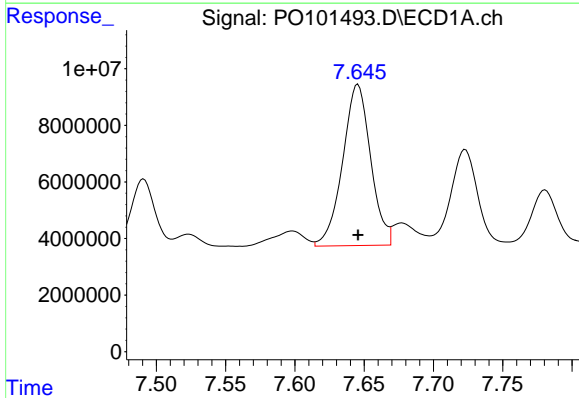
R.T.: 8.266 min
 Delta R.T.: -0.002 min
 Response: 94957817
 Conc: 433.03 ng/ml

Instrument :
 ECD_O
 ClientSampleId :
 PB158726BS



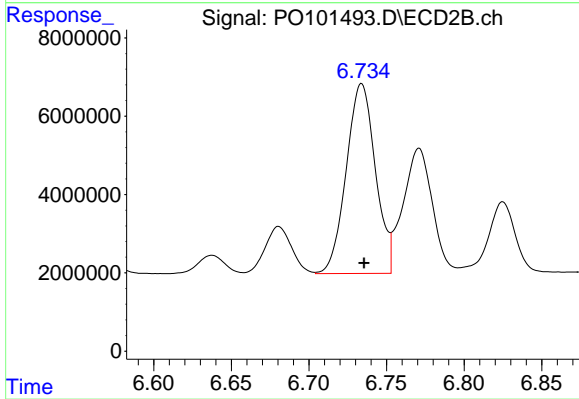
#35 AR-1260-5

R.T.: 7.276 min
 Delta R.T.: -0.003 min
 Response: 84606081
 Conc: 403.06 ng/ml



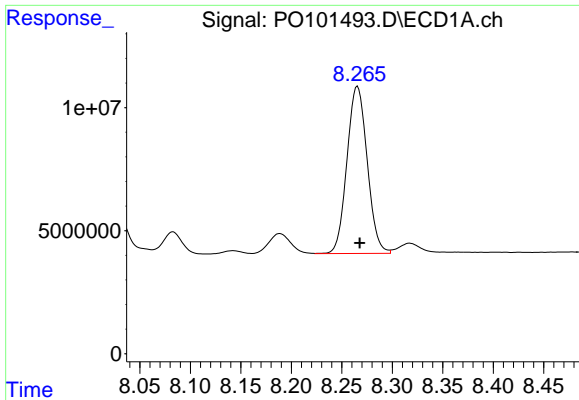
#36 AR-1262-1

R.T.: 7.645 min
 Delta R.T.: 0.000 min
 Response: 80241478
 Conc: 718.02 ng/ml



#36 AR-1262-1

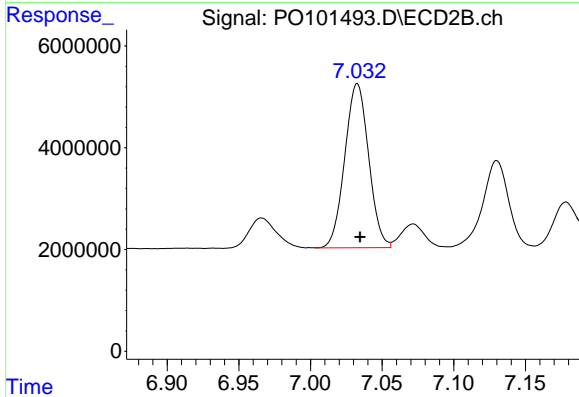
R.T.: 6.734 min
 Delta R.T.: -0.002 min
 Response: 63356149
 Conc: 781.52 ng/ml



#37 AR-1262-2

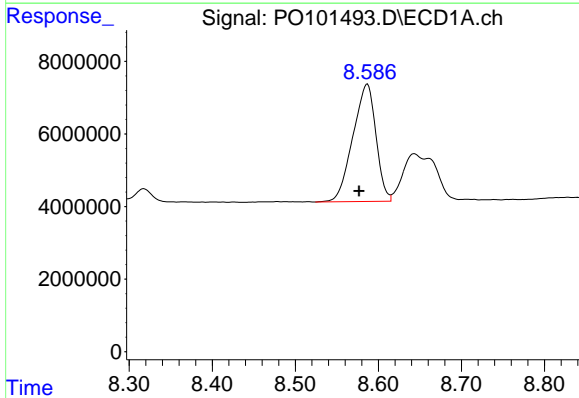
R.T.: 8.266 min
 Delta R.T.: -0.002 min
 Response: 94957817
 Conc: 349.05 ng/ml

Instrument :
 ECD_O
 ClientSampleId :
 PB158726BS



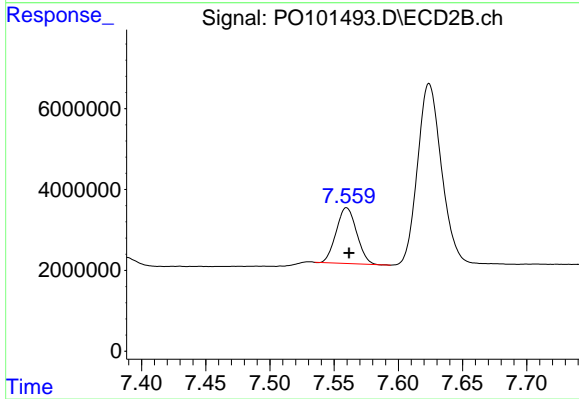
#37 AR-1262-2

R.T.: 7.033 min
 Delta R.T.: -0.002 min
 Response: 37418980
 Conc: 251.48 ng/ml



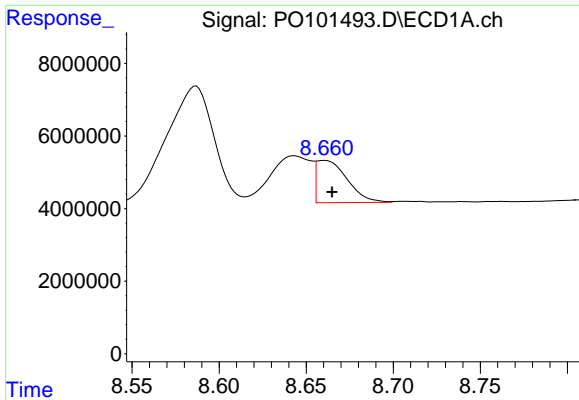
#38 AR-1262-3

R.T.: 8.587 min
 Delta R.T.: 0.010 min
 Response: 62375803
 Conc: 320.68 ng/ml



#38 AR-1262-3

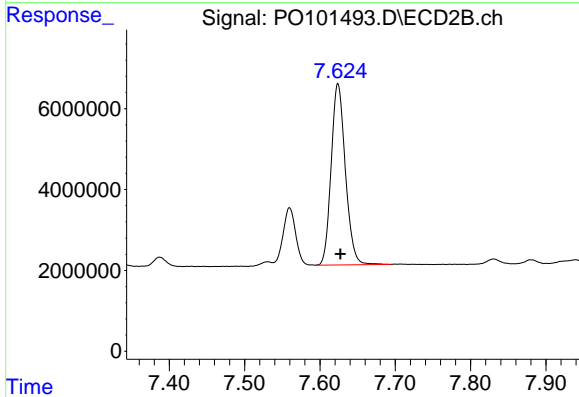
R.T.: 7.560 min
 Delta R.T.: -0.002 min
 Response: 15302877
 Conc: 148.97 ng/ml



#39 AR-1262-4

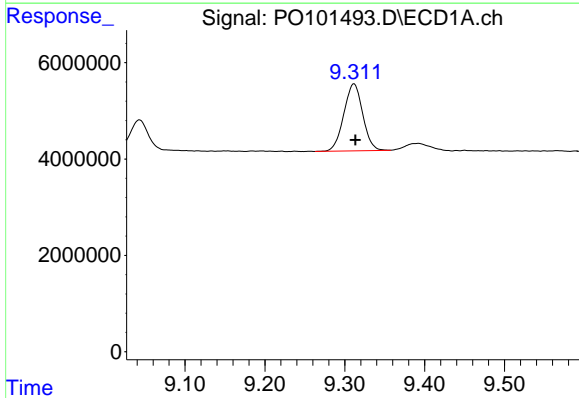
R.T.: 8.661 min
 Delta R.T.: -0.004 min
 Response: 14332038
 Conc: 92.31 ng/ml

Instrument :
 ECD_O
 ClientSampleId :
 PB158726BS



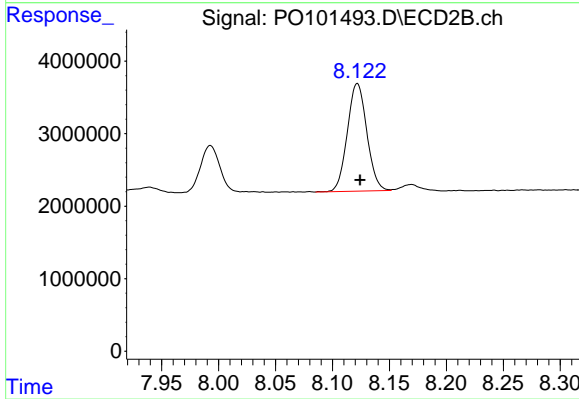
#39 AR-1262-4

R.T.: 7.624 min
 Delta R.T.: -0.003 min
 Response: 58756759
 Conc: 300.90 ng/ml



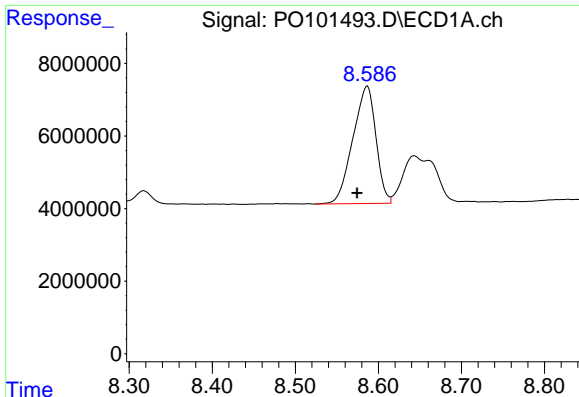
#40 AR-1262-5

R.T.: 9.312 min
 Delta R.T.: -0.002 min
 Response: 22920763
 Conc: 244.02 ng/ml



#40 AR-1262-5

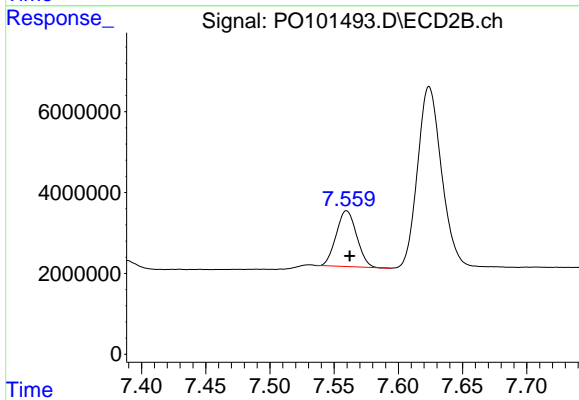
R.T.: 8.122 min
 Delta R.T.: -0.002 min
 Response: 17724002
 Conc: 211.50 ng/ml



#41 AR-1268-1

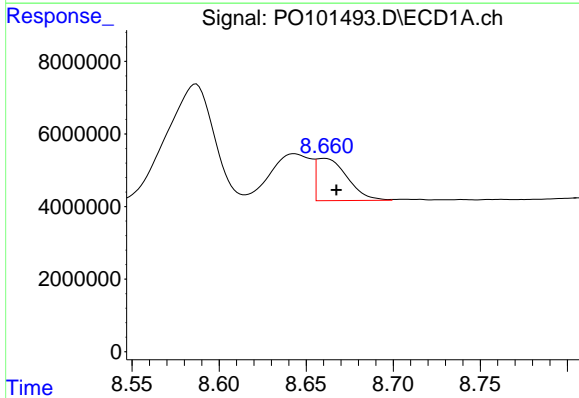
R.T.: 8.587 min
 Delta R.T.: 0.012 min
 Response: 62375803
 Conc: 196.70 ng/ml

Instrument :
 ECD_O
 ClientSampleId :
 PB158726BS



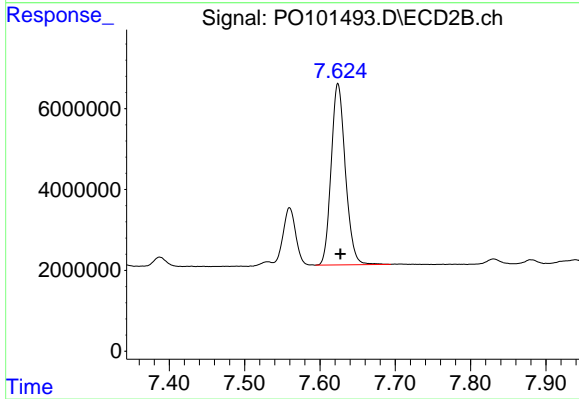
#41 AR-1268-1

R.T.: 7.560 min
 Delta R.T.: -0.002 min
 Response: 15302877
 Conc: 54.74 ng/ml



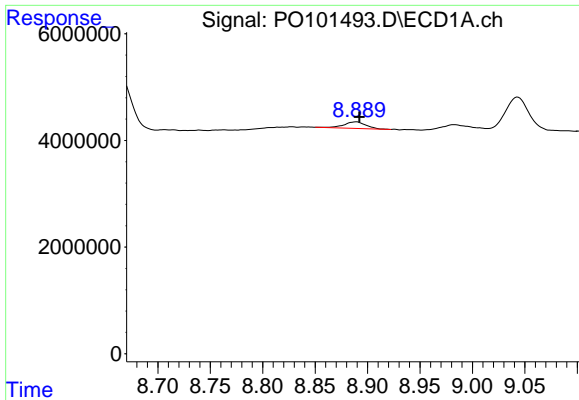
#42 AR-1268-2

R.T.: 8.661 min
 Delta R.T.: -0.007 min
 Response: 14332038
 Conc: 49.63 ng/ml



#42 AR-1268-2

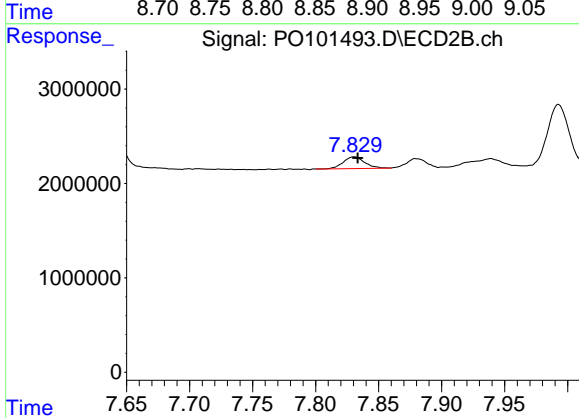
R.T.: 7.624 min
 Delta R.T.: -0.003 min
 Response: 58756759
 Conc: 229.74 ng/ml



#43 AR-1268-3

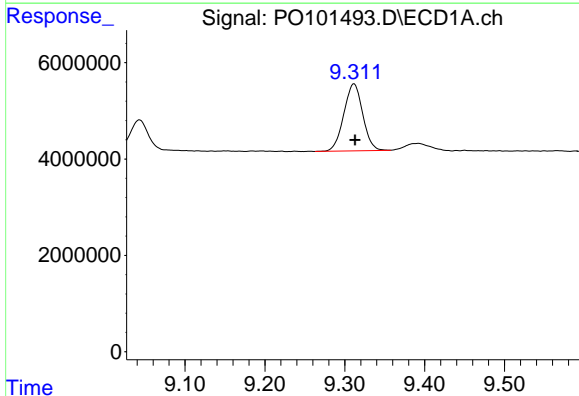
R.T.: 8.889 min
 Delta R.T.: -0.003 min
 Response: 1779197
 Conc: 6.91 ng/ml

Instrument :
 ECD_O
 ClientSampleId :
 PB158726BS



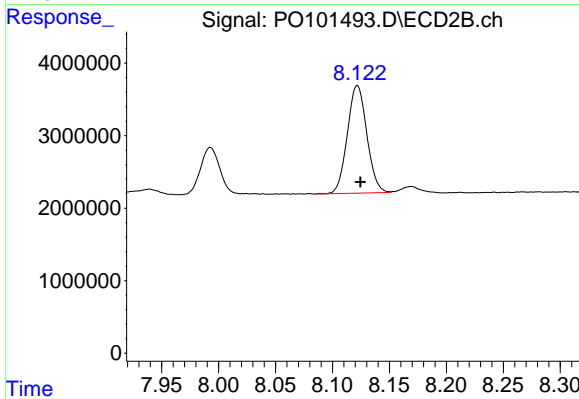
#43 AR-1268-3

R.T.: 7.831 min
 Delta R.T.: -0.003 min
 Response: 1475638
 Conc: 6.35 ng/ml



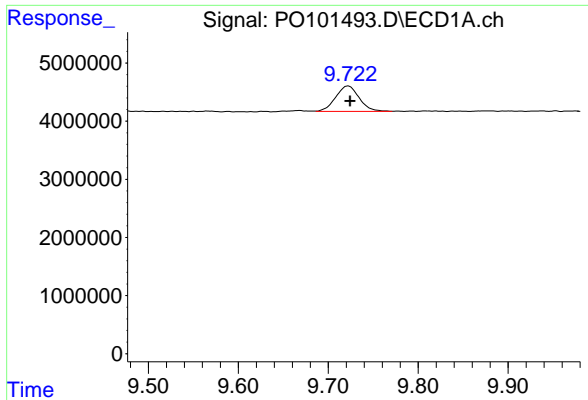
#44 AR-1268-4

R.T.: 9.312 min
 Delta R.T.: -0.001 min
 Response: 22920763
 Conc: 249.43 ng/ml



#44 AR-1268-4

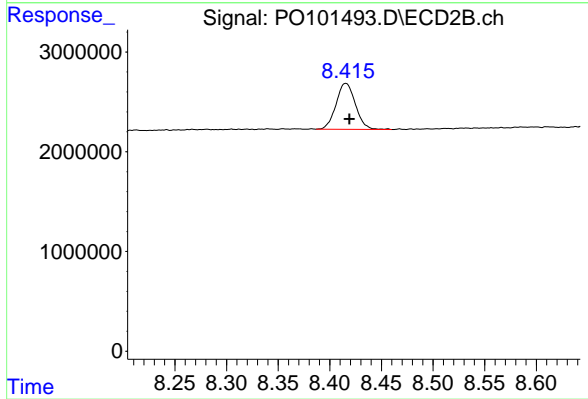
R.T.: 8.122 min
 Delta R.T.: -0.003 min
 Response: 17724002
 Conc: 208.57 ng/ml



#45 AR-1268-5

R.T.: 9.722 min
Delta R.T.: -0.002 min
Response: 7961632
Conc: 9.94 ng/ml

Instrument :
ECD_O
ClientSampleId :
PB158726BS



#45 AR-1268-5

R.T.: 8.415 min
Delta R.T.: -0.004 min
Response: 6039402
Conc: 9.18 ng/ml