

Data Path : Z:\pestpcbsrv\HPCHEM1\ECD_0\Data\P0013124\
 Data File : P0101497.D
 Signal(s) : Signal #1: ECD1A.ch Signal #2: ECD2B.ch
 Acq On : 31 Jan 2024 19:20
 Operator : YP/AJ
 Sample : AR1254CCC500
 Misc :
 ALS Vial : 6 Sample Multiplier: 1

Instrument :
 ECD_0
 ClientSampleId :
 AR1254CCC500

Integration File signal 1: autoint1.e
 Integration File signal 2: autoint2.e
 Quant Time: Feb 01 02:15:24 2024
 Quant Method : Z:\pestpcbsrv\HPCHEM1\ECD_0\methods\P0012424.M
 Quant Title : GC EXTRACTABLES
 QLast Update : Wed Jan 24 04:51:39 2024
 Response via : Initial Calibration
 Integrator: ChemStation

Volume Inj. : 2 µl
 Signal #1 Phase : ZB-MR1 Signal #2 Phase: ZB-MR2
 Signal #1 Info : 30Mx0.32mmx 0.50µ Signal #2 Info : 30M x 0.32mm x 0.25µm

Compound	RT#1	RT#2	Resp#1	Resp#2	ng/ml	ng/ml
System Monitoring Compounds						
1) SA Tetrachlo...	4.331	3.629	181.9E6	118.3E6	47.386	45.775
2) SA Decachlor...	10.055	8.673	113.6E6	83323044	48.759	43.970
Target Compounds						
3) L1 AR-1016-1	5.497	4.720	1650221	1317352	16.881	17.820
4) L1 AR-1016-2	5.523	4.740	2005952	1044697	14.583	10.599 #
5) L1 AR-1016-3	5.581	4.919	1057205	660938	11.785	12.047
6) L1 AR-1016-4	5.680	4.959	849962	26307294	11.892	517.673 #
7) L1 AR-1016-5	5.976	5.175	19860822	15630309	251.258	239.413
8) L2 AR-1221-1	4.540	3.851	947043	264295	22.619	9.228 #
9) L2 AR-1221-2	4.636	3.931	2946507	2013472	92.870	90.027
10) L2 AR-1221-3	4.700	4.005	1104722	500436	12.476	7.873 #
11) L3 AR-1232-1	4.700	4.005	1104722	500436	14.611	9.172 #
12) L3 AR-1232-2	5.229	4.740	986988	1044697	21.719	21.726
13) L3 AR-1232-3	5.523	4.919	2005952	660938	29.967	25.207
14) L3 AR-1232-4	5.680	5.000	849962	8216718	23.743	295.061 #
15) L3 AR-1232-5	5.771	5.175	35392628	15630309	1037.400	511.138 #
16) L4 AR-1242-1	5.497	4.720	1650221	1317352	21.328	22.391
17) L4 AR-1242-2	5.523	4.740	2005952	1044697	18.523	13.472 #
18) L4 AR-1242-3	5.581	4.919	1057205	660938	14.873	15.247
19) L4 AR-1242-4	5.680	5.000	849962	8216718	14.923	165.078 #
20) L4 AR-1242-5	6.422	5.530	17104212	58401785	318.729	1102.483 #
21) L5 AR-1248-1	5.497	4.720	1650221	1317352	28.471	29.441
22) L5 AR-1248-2	5.771	4.959	35392628	26307294	351.437	374.149
23) L5 AR-1248-3	5.976	5.000	19860822	8216718	191.682	112.967 #
24) L5 AR-1248-4	6.380	5.175	25064130	15630309	276.005	183.862 #
25) L5 AR-1248-5	6.422	5.571	17104212	7145892	191.759	104.365 #
26) L6 AR-1254-1	6.354	5.530	55308962	58401785	464.861	469.424
27) L6 AR-1254-2	6.573	5.678	81324508	51479949	477.481	459.900
28) L6 AR-1254-3	6.941	6.085	81175377	77378649	494.301	465.035
29) L6 AR-1254-4	7.227	6.315	54038510	43758747	540.642	513.018
30) L6 AR-1254-5	7.648	6.735	60587309	65393539	515.504	482.616
31) L7 AR-1260-1	7.105	6.215	33872454	38807235	237.513	314.498 #
32) L7 AR-1260-2	7.363	6.404	35993131	31267381	245.715	228.678
33) L7 AR-1260-3	7.708	6.558	8167453	30679840	69.947	239.155 #
34) L7 AR-1260-4	7.938	7.032	22247239	3272525	188.971	31.665 #
35) L7 AR-1260-5	8.267	7.275	8668068	7405249	39.528	35.278
36) L8 AR-1262-1	7.648	6.735	60587309	65393539	542.150	806.650 #
37) L8 AR-1262-2	8.267	7.032	8668068	3272525	31.862	21.993 #
38) L8 AR-1262-3	8.590	7.561	6478268	223796	33.305	2.179 #
39) L8 AR-1262-4	8.666	7.624	406186	6768312	2.616	34.661 #
40) L8 AR-1262-5	9.305	8.122	446601	620015	4.755	7.399 #
41) L9 AR-1268-1	8.590	7.561	6478268	223796	20.429	0.801 #

Data Path : Z:\pestpcbsrv\HPCHEM1\ECD_0\Data\P0013124\
 Data File : P0101497.D
 Signal(s) : Signal #1: ECD1A.ch Signal #2: ECD2B.ch
 Acq On : 31 Jan 2024 19:20
 Operator : YP/AJ
 Sample : AR1254CCC500
 Misc :
 ALS Vial : 6 Sample Multiplier: 1

Instrument :
 ECD_0
 ClientSampleId :
 AR1254CCC500

Integration File signal 1: autoint1.e
 Integration File signal 2: autoint2.e
 Quant Time: Feb 01 02:15:24 2024
 Quant Method : Z:\pestpcbsrv\HPCHEM1\ECD_0\methods\P0012424.M
 Quant Title : GC EXTRACTABLES
 QLast Update : Wed Jan 24 04:51:39 2024
 Response via : Initial Calibration
 Integrator: ChemStation

Volume Inj. : 2 µl
 Signal #1 Phase : ZB-MR1 Signal #2 Phase: ZB-MR2
 Signal #1 Info : 30Mx0.32mmx 0.50µ Signal #2 Info : 30M x 0.32mm x 0.25µm

	Compound	RT#1	RT#2	Resp#1	Resp#2	ng/ml	ng/ml
42)	L9 AR-1268-2	8.666	7.624	406186	6768312	1.406	26.464 #
43)	L9 AR-1268-3	8.889	7.830	158018	254663	0.613	1.095 #
44)	L9 AR-1268-4	9.305	8.122	446601	620015	4.860	7.296 #
45)	L9 AR-1268-5	9.722	8.416	915261	631251	1.142	0.959

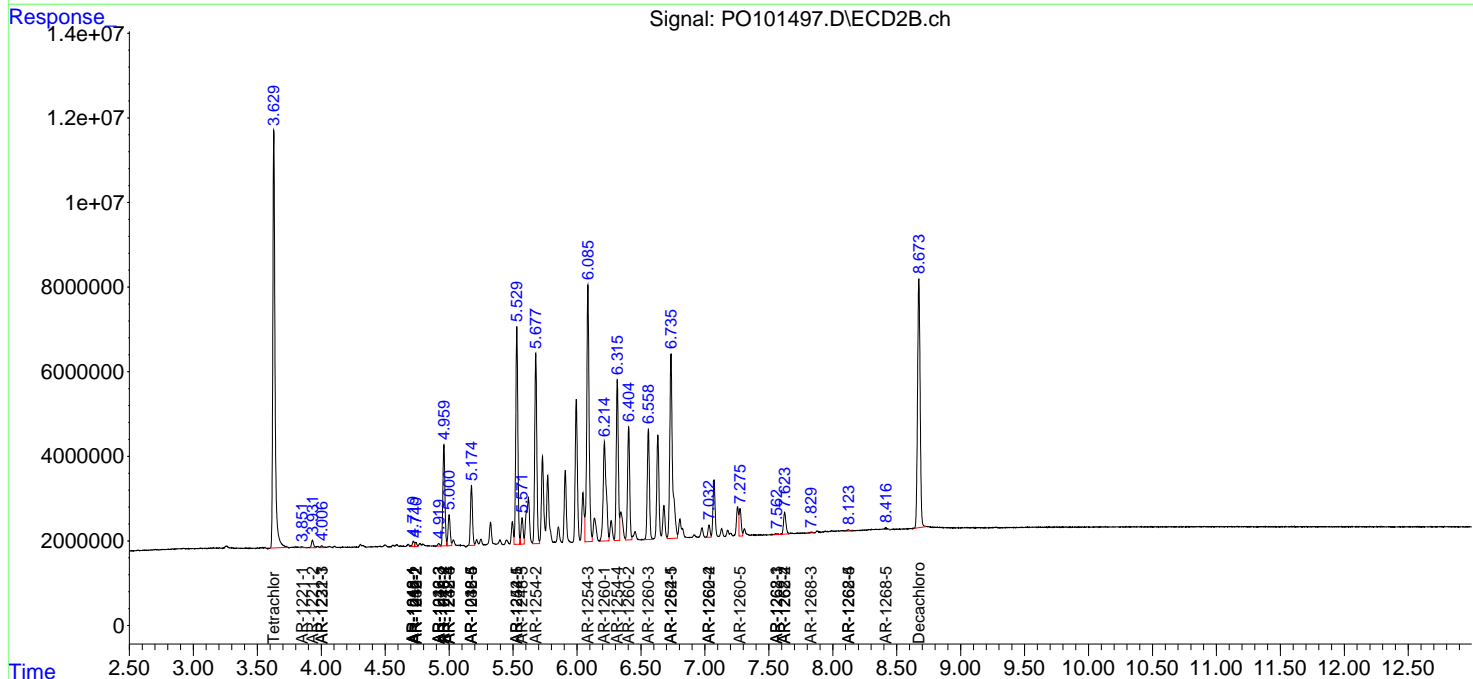
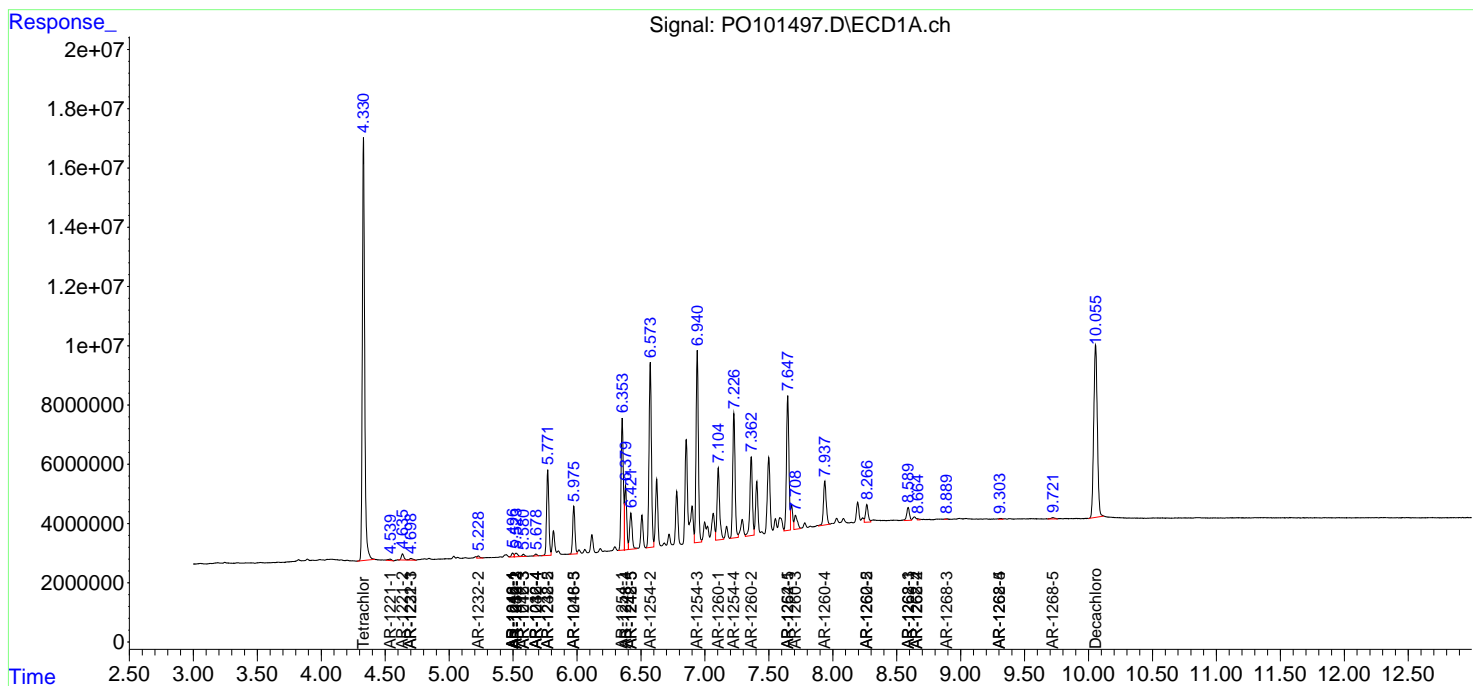
(f)=RT Delta > 1/2 Window (#)=Amounts differ by > 25% (m)=manual int.

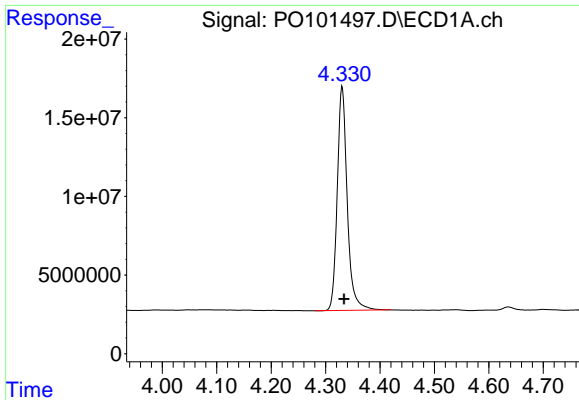
Data Path : Z:\pestpcbsrv\HPCHEM1\ECD_O\Data\PO013124\
 Data File : PO101497.D
 Signal(s) : Signal #1: ECD1A.ch Signal #2: ECD2B.ch
 Acq On : 31 Jan 2024 19:20
 Operator : YP/AJ
 Sample : AR1254CCC500
 Misc :
 ALS Vial : 6 Sample Multiplier: 1

Instrument :
 ECD_O
 ClientSampleId :
 AR1254CCC500

Integration File signal 1: autoint1.e
 Integration File signal 2: autoint2.e
 Quant Time: Feb 01 02:15:24 2024
 Quant Method : Z:\pestpcbsrv\HPCHEM1\ECD_O\methods\PO012424.M
 Quant Title : GC EXTRACTABLES
 QLast Update : Wed Jan 24 04:51:39 2024
 Response via : Initial Calibration
 Integrator: ChemStation

Volume Inj. : 2 µl
 Signal #1 Phase : ZB-MR1 Signal #2 Phase: ZB-MR2
 Signal #1 Info : 30Mx0.32mmx 0.50µ Signal #2 Info : 30M x 0.32mm x 0.25µm

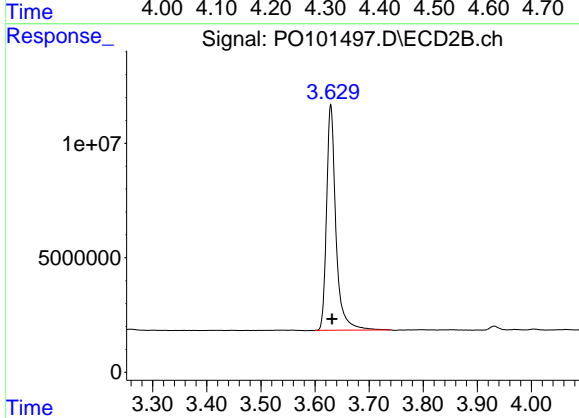




#1 Tetrachloro-m-xylene

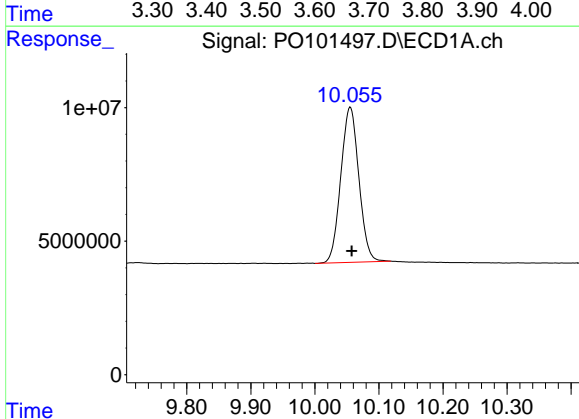
R.T.: 4.331 min
 Delta R.T.: -0.003 min
 Response: 181894285
 Conc: 47.39 ng/ml

Instrument :
 ECD_O
 ClientSampleId :
 AR1254CCC500



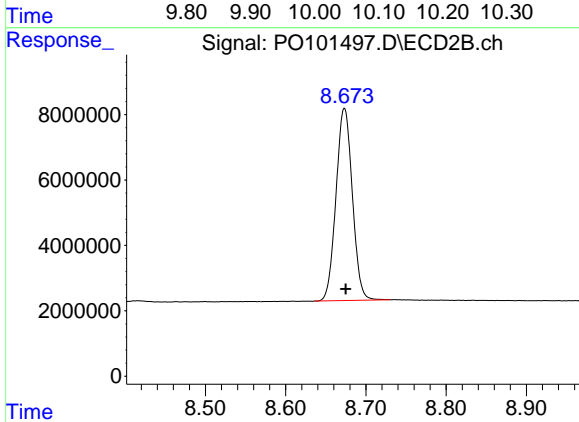
#1 Tetrachloro-m-xylene

R.T.: 3.629 min
 Delta R.T.: -0.002 min
 Response: 118298011
 Conc: 45.78 ng/ml



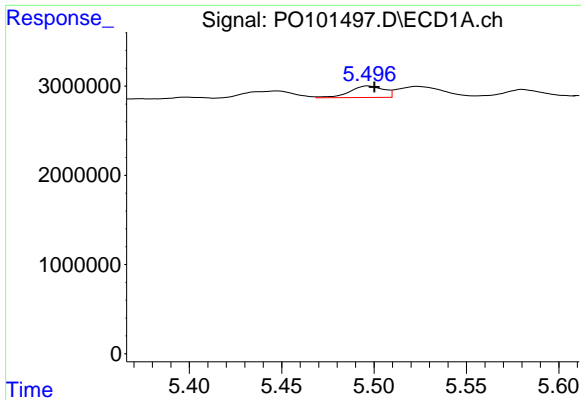
#2 Decachlorobiphenyl

R.T.: 10.055 min
 Delta R.T.: -0.002 min
 Response: 113614667
 Conc: 48.76 ng/ml



#2 Decachlorobiphenyl

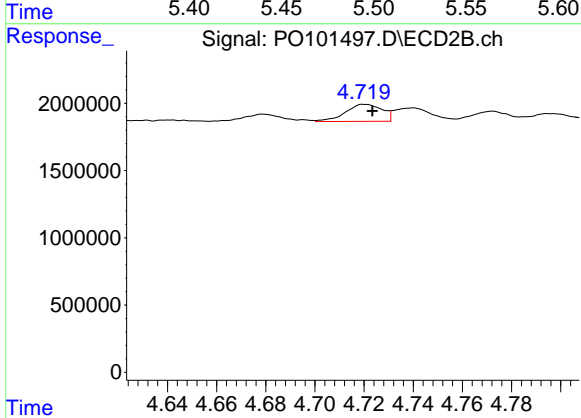
R.T.: 8.673 min
 Delta R.T.: -0.002 min
 Response: 83323044
 Conc: 43.97 ng/ml



#3 AR-1016-1

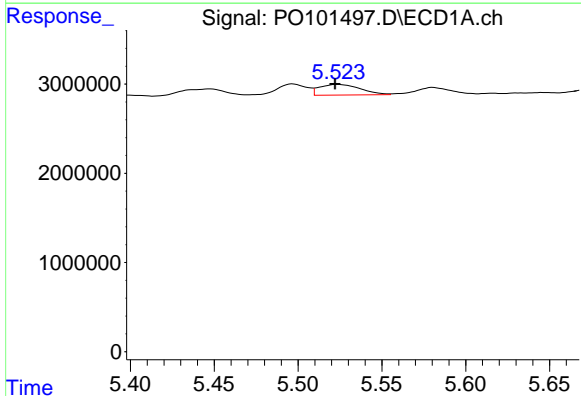
R.T.: 5.497 min
 Delta R.T.: -0.003 min
 Response: 1650221
 Conc: 16.88 ng/ml

Instrument :
 ECD_O
 ClientSampleId :
 AR1254CCC500



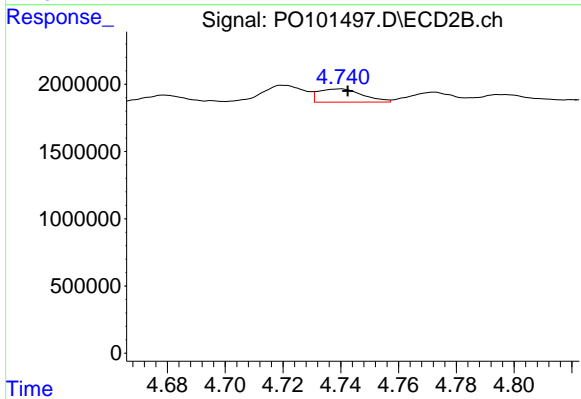
#3 AR-1016-1

R.T.: 4.720 min
 Delta R.T.: -0.003 min
 Response: 1317352
 Conc: 17.82 ng/ml



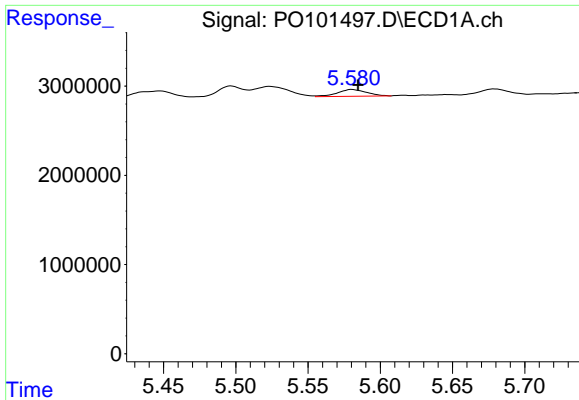
#4 AR-1016-2

R.T.: 5.523 min
 Delta R.T.: 0.001 min
 Response: 2005952
 Conc: 14.58 ng/ml



#4 AR-1016-2

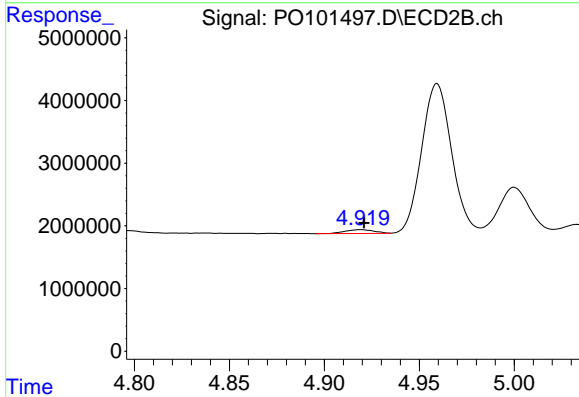
R.T.: 4.740 min
 Delta R.T.: -0.003 min
 Response: 1044697
 Conc: 10.60 ng/ml



#5 AR-1016-3

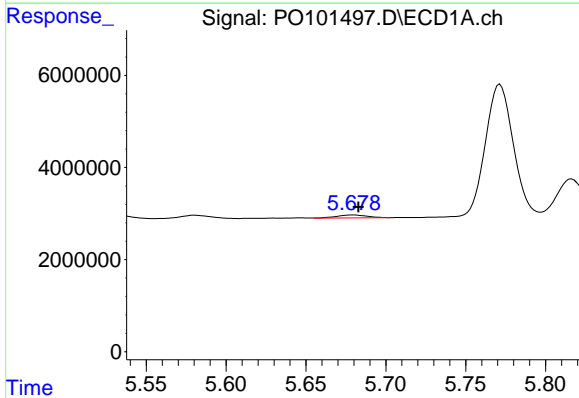
R.T.: 5.581 min
 Delta R.T.: -0.004 min
 Response: 1057205
 Conc: 11.78 ng/ml

Instrument :
 ECD_O
 ClientSampleId :
 AR1254CCC500



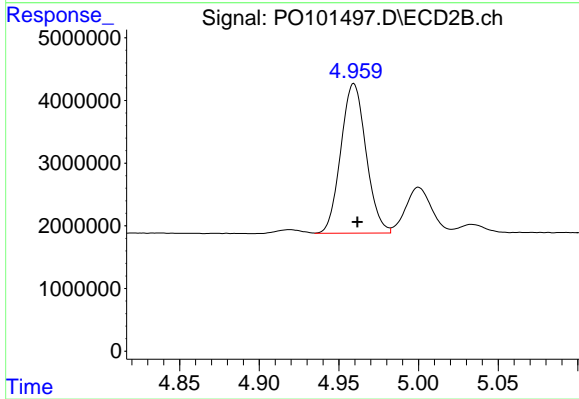
#5 AR-1016-3

R.T.: 4.919 min
 Delta R.T.: -0.002 min
 Response: 660938
 Conc: 12.05 ng/ml



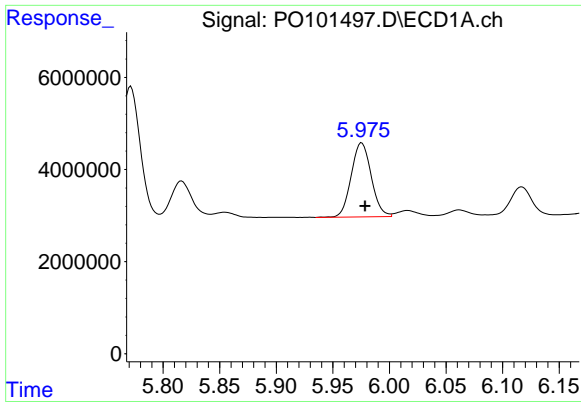
#6 AR-1016-4

R.T.: 5.680 min
 Delta R.T.: -0.003 min
 Response: 849962
 Conc: 11.89 ng/ml



#6 AR-1016-4

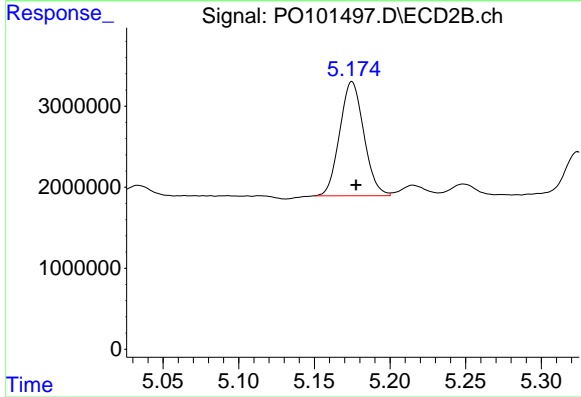
R.T.: 4.959 min
 Delta R.T.: -0.002 min
 Response: 26307294
 Conc: 517.67 ng/ml



#7 AR-1016-5

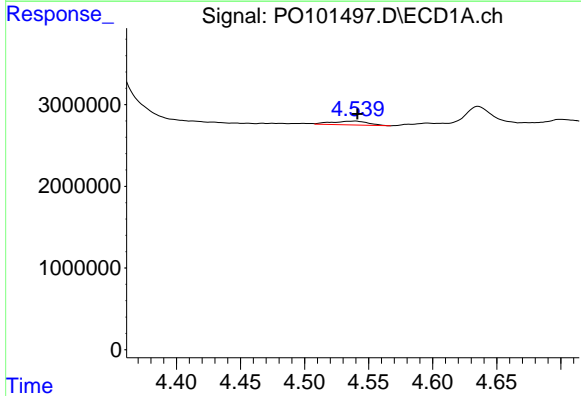
R.T.: 5.976 min
 Delta R.T.: -0.003 min
 Response: 19860822
 Conc: 251.26 ng/ml

Instrument :
 ECD_O
 ClientSampleId :
 AR1254CCC500



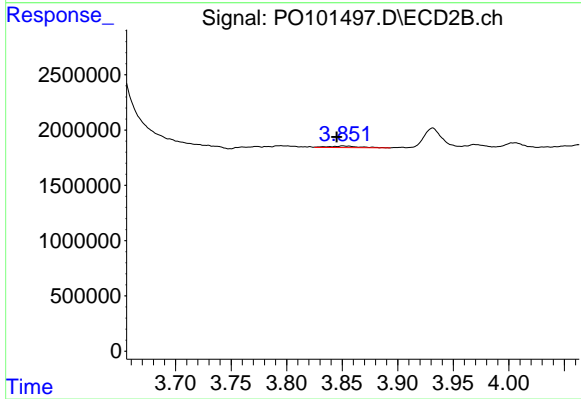
#7 AR-1016-5

R.T.: 5.175 min
 Delta R.T.: -0.003 min
 Response: 15630309
 Conc: 239.41 ng/ml



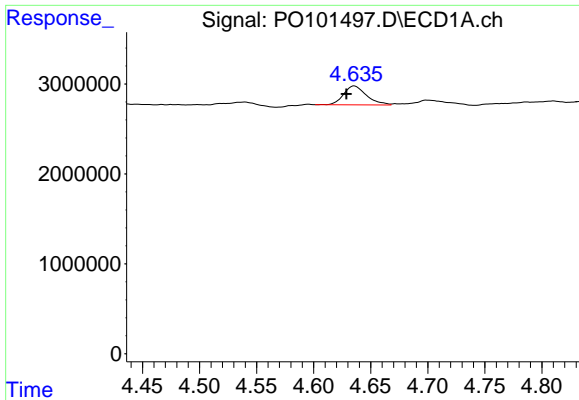
#8 AR-1221-1

R.T.: 4.540 min
 Delta R.T.: -0.002 min
 Response: 947043
 Conc: 22.62 ng/ml



#8 AR-1221-1

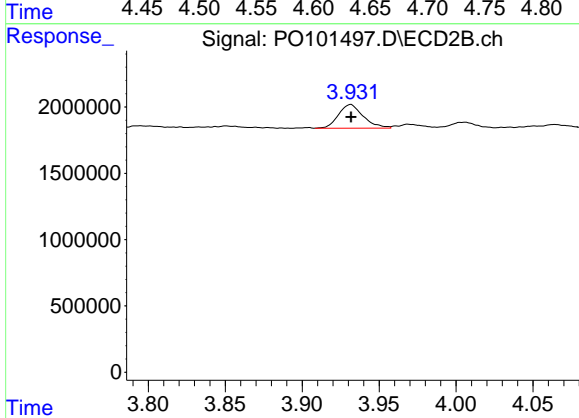
R.T.: 3.851 min
 Delta R.T.: 0.006 min
 Response: 264295
 Conc: 9.23 ng/ml



#9 AR-1221-2

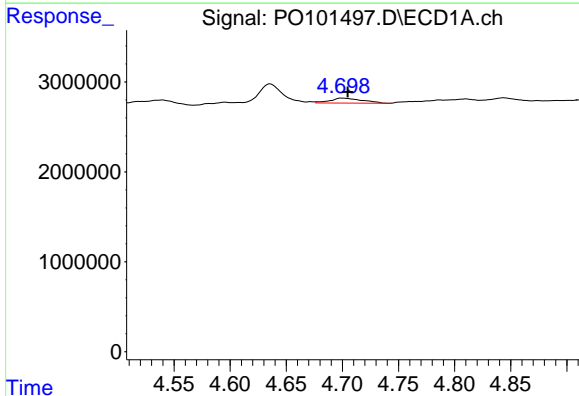
R.T.: 4.636 min
 Delta R.T.: 0.007 min
 Response: 2946507
 Conc: 92.87 ng/ml

Instrument :
 ECD_O
 ClientSampleId :
 AR1254CCC500



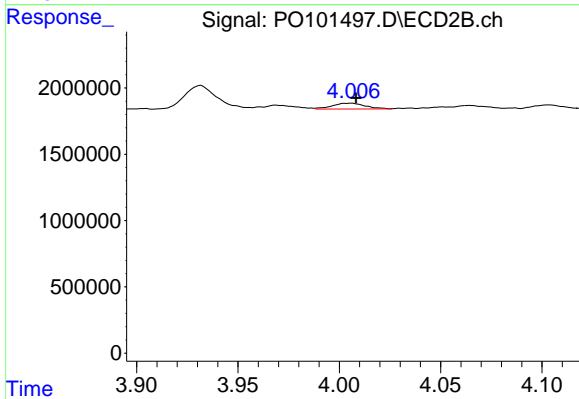
#9 AR-1221-2

R.T.: 3.931 min
 Delta R.T.: 0.000 min
 Response: 2013472
 Conc: 90.03 ng/ml



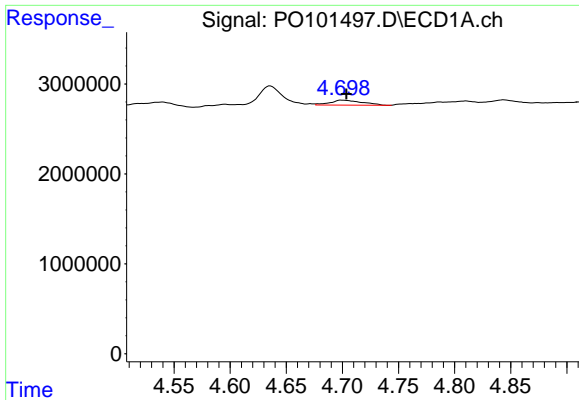
#10 AR-1221-3

R.T.: 4.700 min
 Delta R.T.: -0.005 min
 Response: 1104722
 Conc: 12.48 ng/ml



#10 AR-1221-3

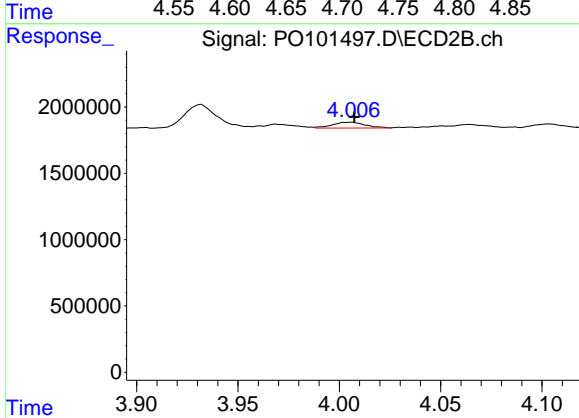
R.T.: 4.005 min
 Delta R.T.: -0.003 min
 Response: 500436
 Conc: 7.87 ng/ml



#11 AR-1232-1

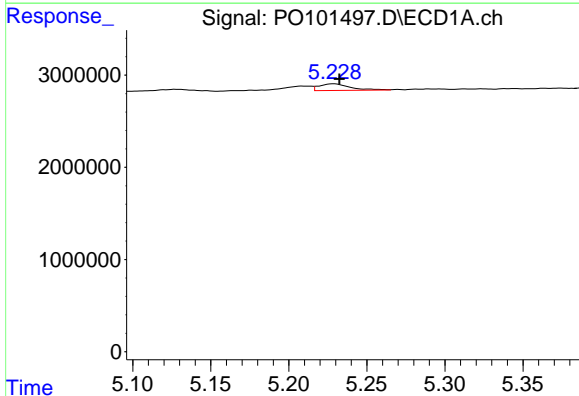
R.T.: 4.700 min
 Delta R.T.: -0.004 min
 Response: 1104722
 Conc: 14.61 ng/ml

Instrument :
 ECD_O
 ClientSampleId :
 AR1254CCC500



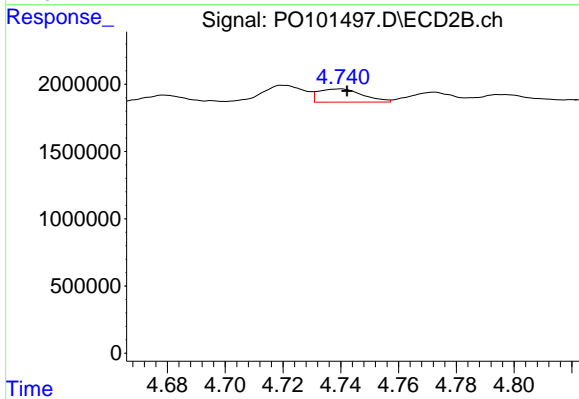
#11 AR-1232-1

R.T.: 4.005 min
 Delta R.T.: -0.002 min
 Response: 500436
 Conc: 9.17 ng/ml



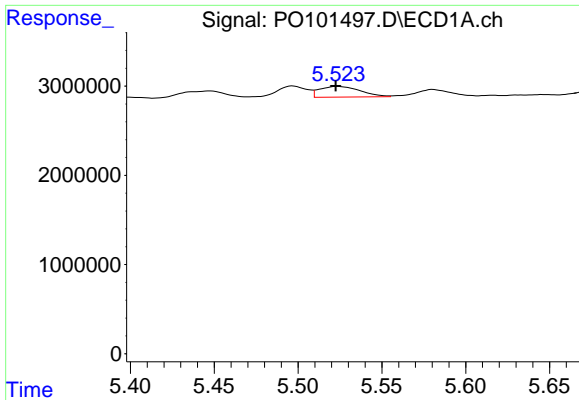
#12 AR-1232-2

R.T.: 5.229 min
 Delta R.T.: -0.004 min
 Response: 986988
 Conc: 21.72 ng/ml



#12 AR-1232-2

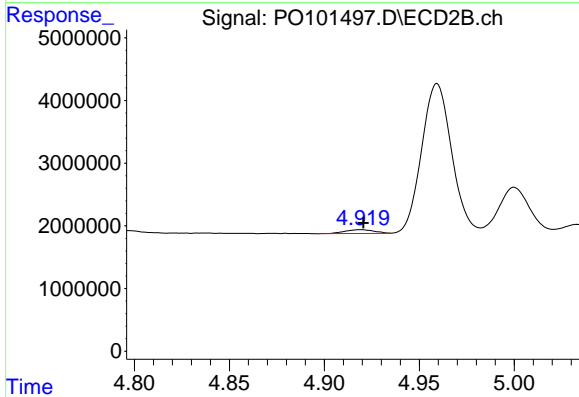
R.T.: 4.740 min
 Delta R.T.: -0.003 min
 Response: 1044697
 Conc: 21.73 ng/ml



#13 AR-1232-3

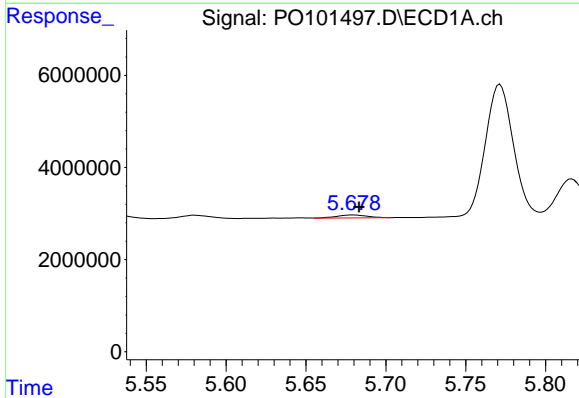
R.T.: 5.523 min
 Delta R.T.: 0.001 min
 Response: 2005952
 Conc: 29.97 ng/ml

Instrument :
 ECD_O
 ClientSampleId :
 AR1254CCC500



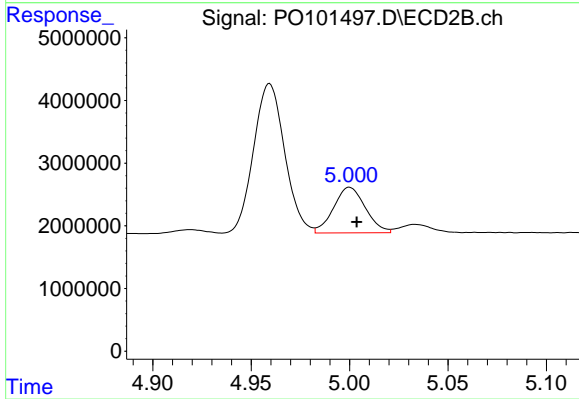
#13 AR-1232-3

R.T.: 4.919 min
 Delta R.T.: -0.002 min
 Response: 660938
 Conc: 25.21 ng/ml



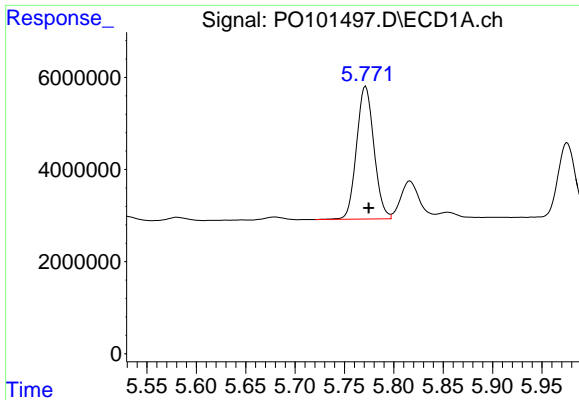
#14 AR-1232-4

R.T.: 5.680 min
 Delta R.T.: -0.004 min
 Response: 849962
 Conc: 23.74 ng/ml



#14 AR-1232-4

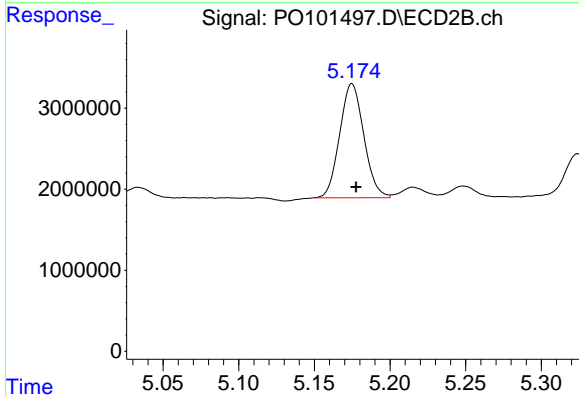
R.T.: 5.000 min
 Delta R.T.: -0.004 min
 Response: 8216718
 Conc: 295.06 ng/ml



#15 AR-1232-5

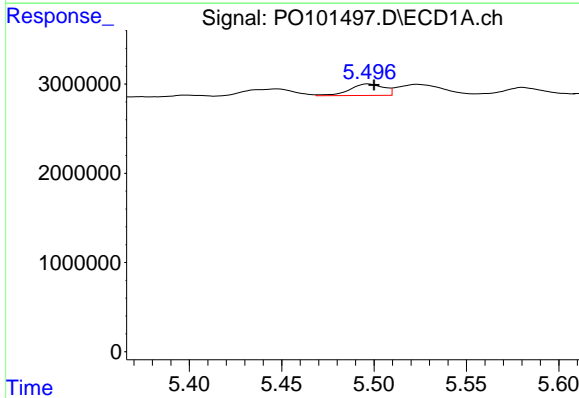
R.T.: 5.771 min
 Delta R.T.: -0.003 min
 Response: 35392628
 Conc: 1037.40 ng/ml

Instrument :
 ECD_O
 ClientSampleId :
 AR1254CCC500



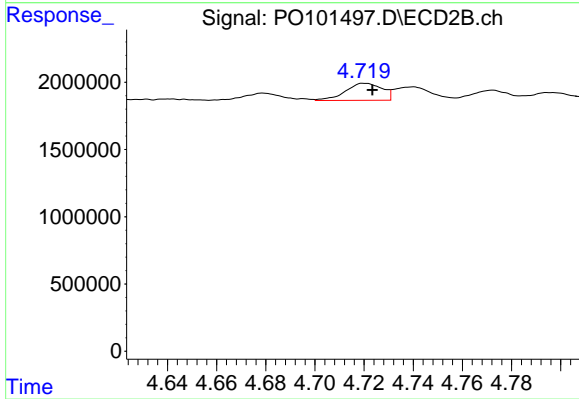
#15 AR-1232-5

R.T.: 5.175 min
 Delta R.T.: -0.003 min
 Response: 15630309
 Conc: 511.14 ng/ml



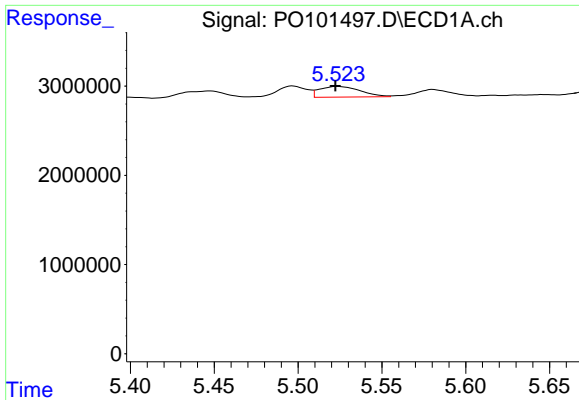
#16 AR-1242-1

R.T.: 5.497 min
 Delta R.T.: -0.003 min
 Response: 1650221
 Conc: 21.33 ng/ml



#16 AR-1242-1

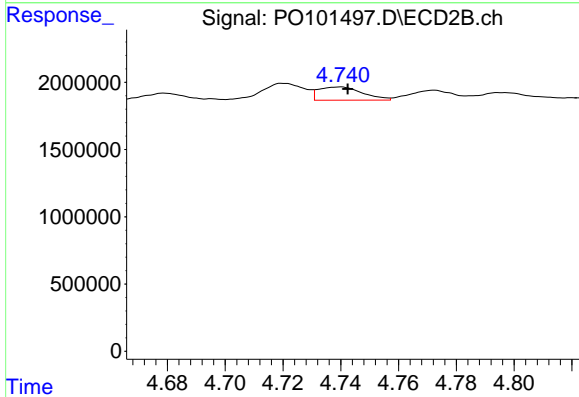
R.T.: 4.720 min
 Delta R.T.: -0.003 min
 Response: 1317352
 Conc: 22.39 ng/ml



#17 AR-1242-2

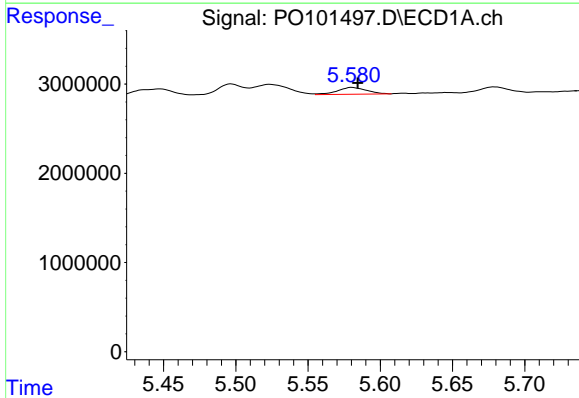
R.T.: 5.523 min
 Delta R.T.: 0.001 min
 Response: 2005952
 Conc: 18.52 ng/ml

Instrument :
 ECD_O
 ClientSampleId :
 AR1254CCC500



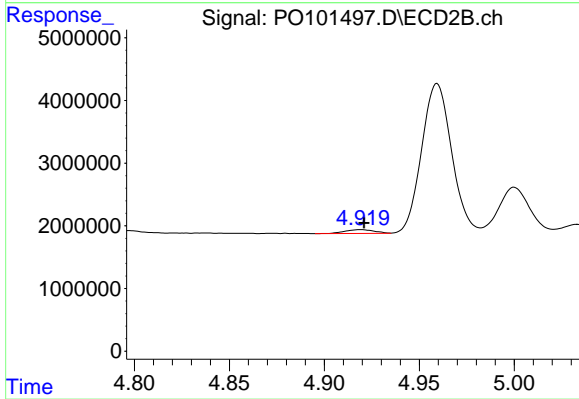
#17 AR-1242-2

R.T.: 4.740 min
 Delta R.T.: -0.003 min
 Response: 1044697
 Conc: 13.47 ng/ml



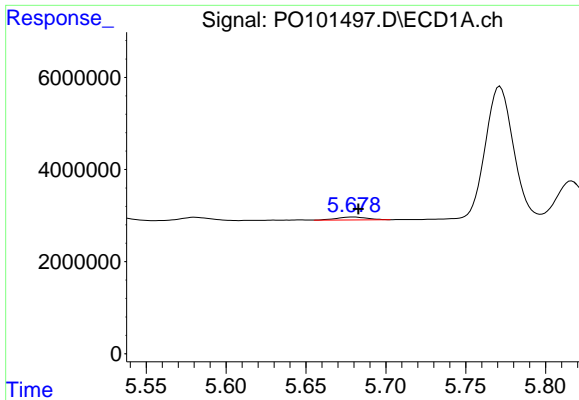
#18 AR-1242-3

R.T.: 5.581 min
 Delta R.T.: -0.004 min
 Response: 1057205
 Conc: 14.87 ng/ml



#18 AR-1242-3

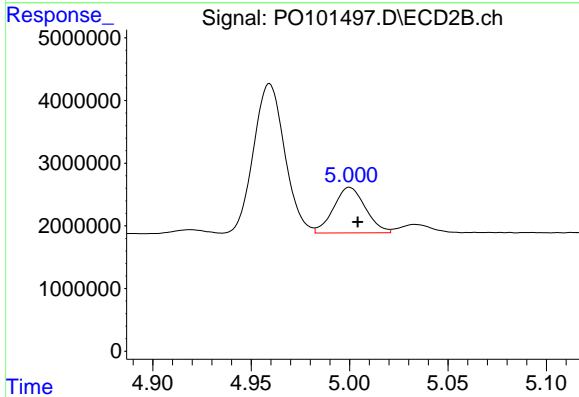
R.T.: 4.919 min
 Delta R.T.: -0.002 min
 Response: 660938
 Conc: 15.25 ng/ml



#19 AR-1242-4

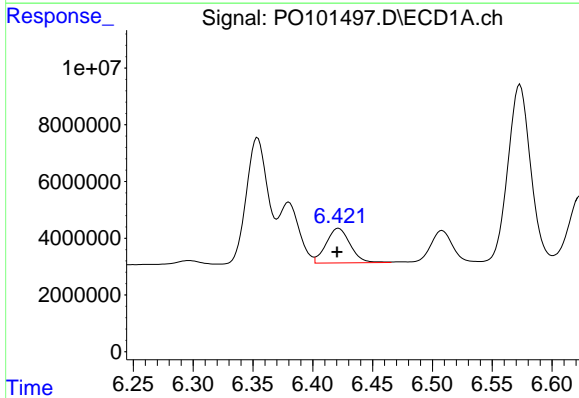
R.T.: 5.680 min
 Delta R.T.: -0.003 min
 Response: 849962
 Conc: 14.92 ng/ml

Instrument :
 ECD_O
 ClientSampleId :
 AR1254CCC500



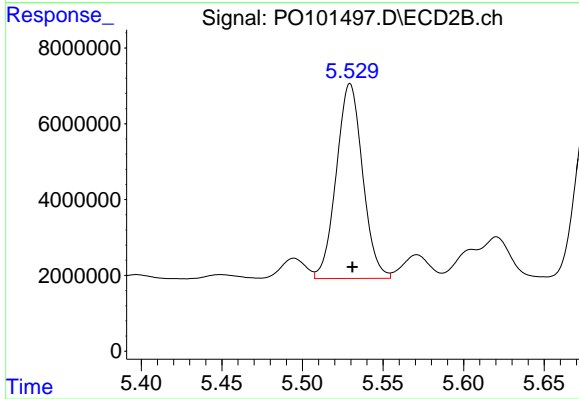
#19 AR-1242-4

R.T.: 5.000 min
 Delta R.T.: -0.004 min
 Response: 8216718
 Conc: 165.08 ng/ml



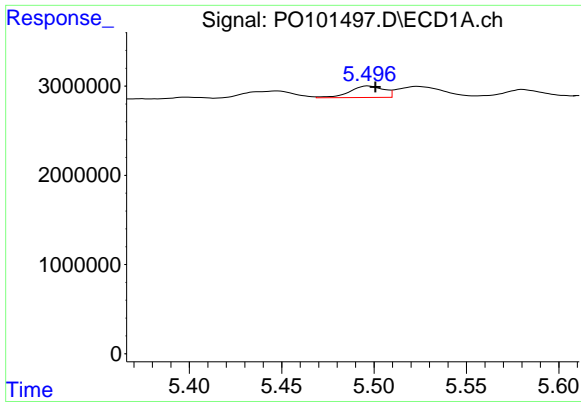
#20 AR-1242-5

R.T.: 6.422 min
 Delta R.T.: 0.001 min
 Response: 17104212
 Conc: 318.73 ng/ml



#20 AR-1242-5

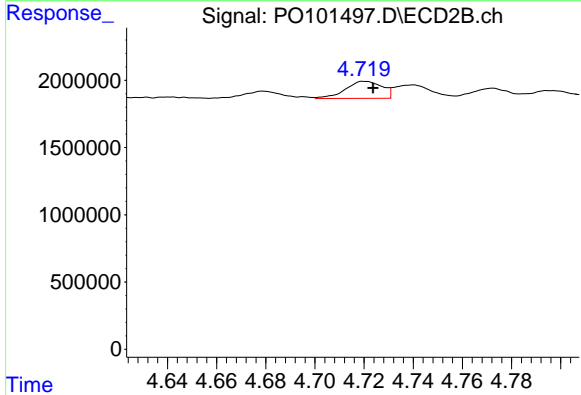
R.T.: 5.530 min
 Delta R.T.: -0.002 min
 Response: 58401785
 Conc: 1102.48 ng/ml



#21 AR-1248-1

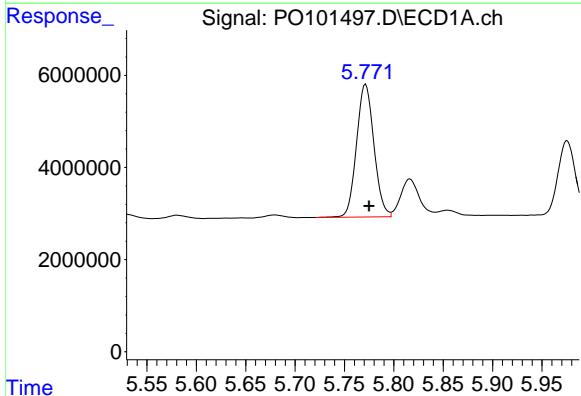
R.T.: 5.497 min
 Delta R.T.: -0.004 min
 Response: 1650221
 Conc: 28.47 ng/ml

Instrument :
 ECD_O
 ClientSampleId :
 AR1254CCC500



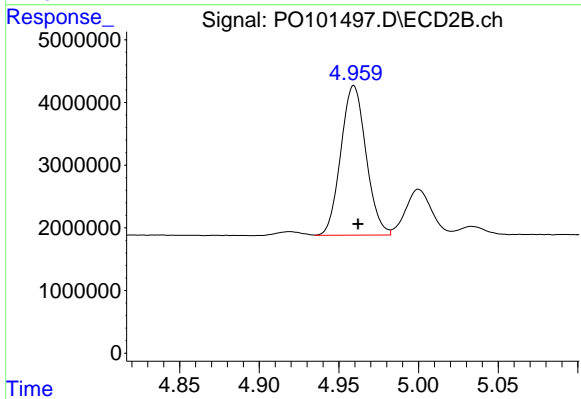
#21 AR-1248-1

R.T.: 4.720 min
 Delta R.T.: -0.003 min
 Response: 1317352
 Conc: 29.44 ng/ml



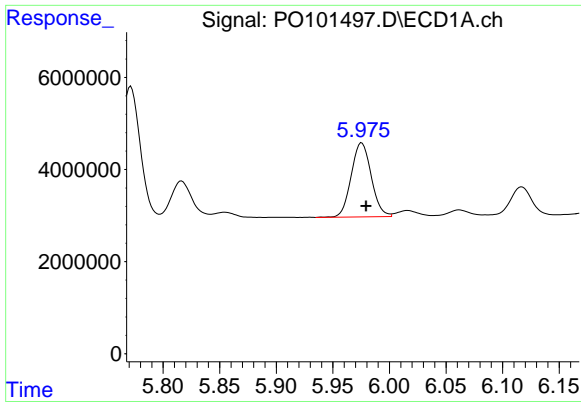
#22 AR-1248-2

R.T.: 5.771 min
 Delta R.T.: -0.004 min
 Response: 35392628
 Conc: 351.44 ng/ml



#22 AR-1248-2

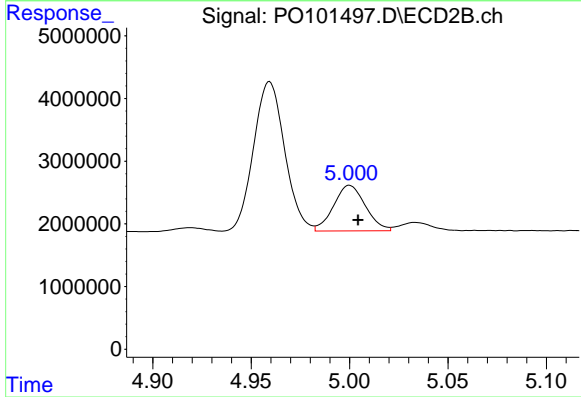
R.T.: 4.959 min
 Delta R.T.: -0.003 min
 Response: 26307294
 Conc: 374.15 ng/ml



#23 AR-1248-3

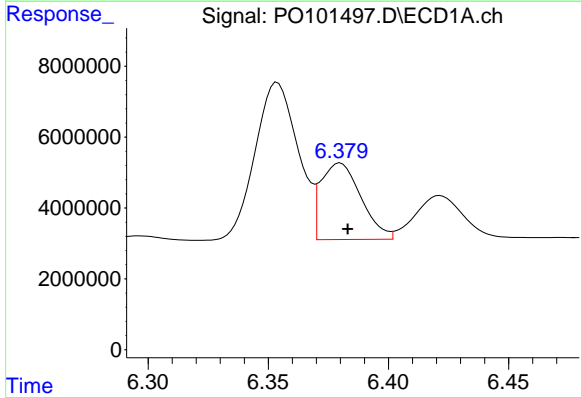
R.T.: 5.976 min
 Delta R.T.: -0.004 min
 Response: 19860822
 Conc: 191.68 ng/ml

Instrument :
 ECD_O
 ClientSampleId :
 AR1254CCC500



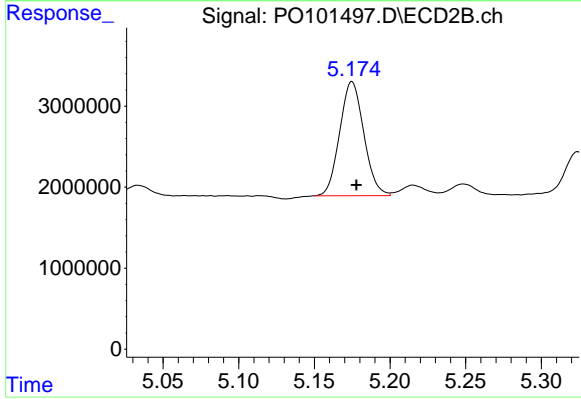
#23 AR-1248-3

R.T.: 5.000 min
 Delta R.T.: -0.004 min
 Response: 8216718
 Conc: 112.97 ng/ml



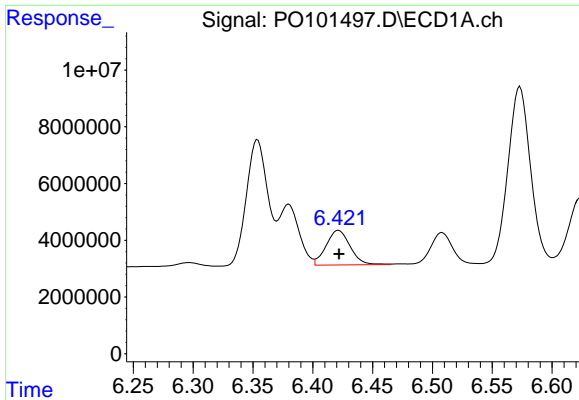
#24 AR-1248-4

R.T.: 6.380 min
 Delta R.T.: -0.003 min
 Response: 25064130
 Conc: 276.01 ng/ml



#24 AR-1248-4

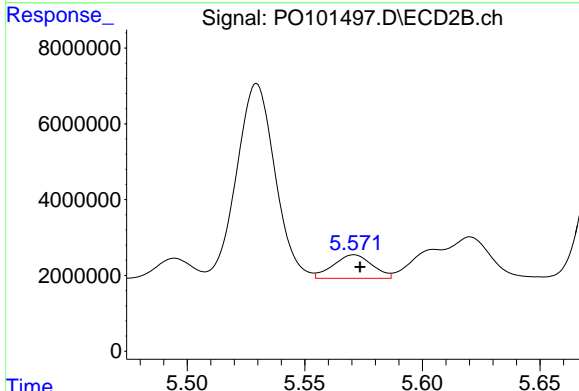
R.T.: 5.175 min
 Delta R.T.: -0.003 min
 Response: 15630309
 Conc: 183.86 ng/ml



#25 AR-1248-5

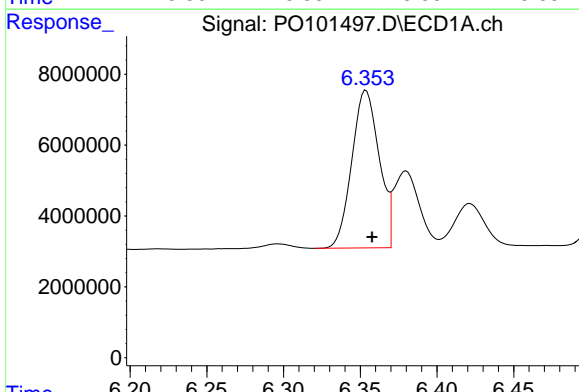
R.T.: 6.422 min
 Delta R.T.: 0.000 min
 Response: 17104212
 Conc: 191.76 ng/ml

Instrument :
 ECD_O
 ClientSampleId :
 AR1254CCC500



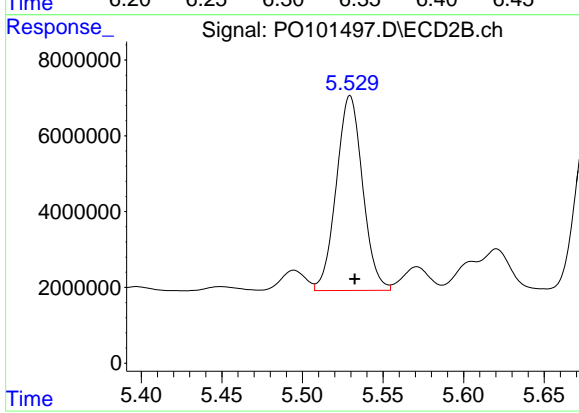
#25 AR-1248-5

R.T.: 5.571 min
 Delta R.T.: -0.003 min
 Response: 7145892
 Conc: 104.36 ng/ml



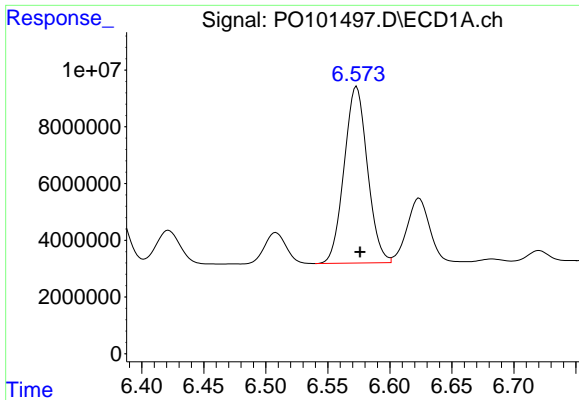
#26 AR-1254-1

R.T.: 6.354 min
 Delta R.T.: -0.004 min
 Response: 55308962
 Conc: 464.86 ng/ml



#26 AR-1254-1

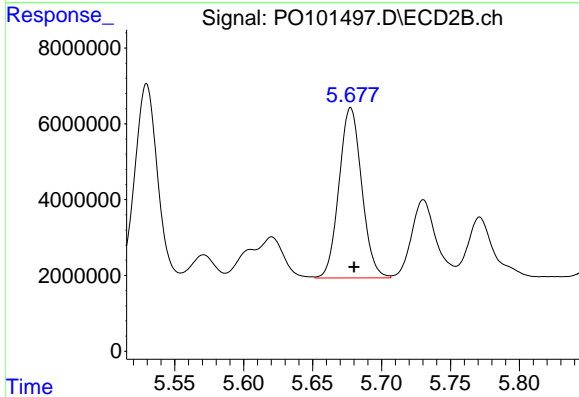
R.T.: 5.530 min
 Delta R.T.: -0.003 min
 Response: 58401785
 Conc: 469.42 ng/ml



#27 AR-1254-2

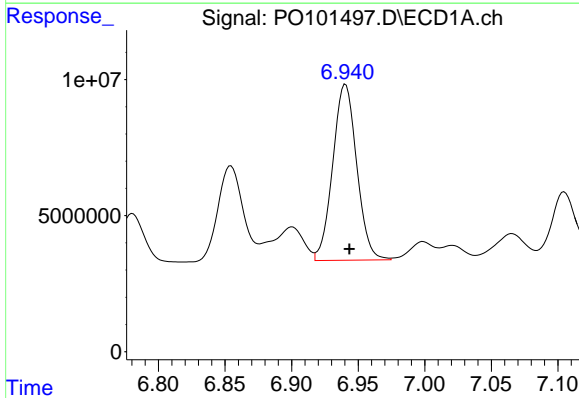
R.T.: 6.573 min
 Delta R.T.: -0.003 min
 Response: 81324508
 Conc: 477.48 ng/ml

Instrument :
 ECD_O
 ClientSampleId :
 AR1254CCC500



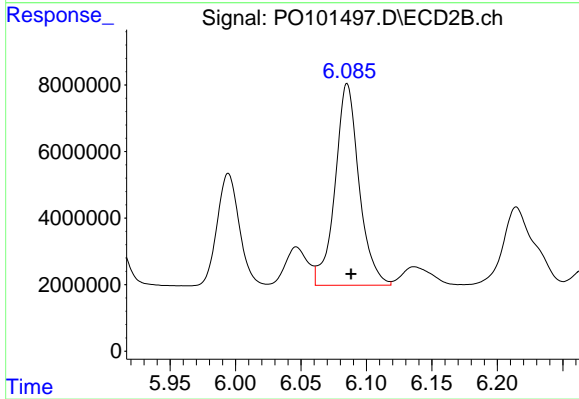
#27 AR-1254-2

R.T.: 5.678 min
 Delta R.T.: -0.003 min
 Response: 51479949
 Conc: 459.90 ng/ml



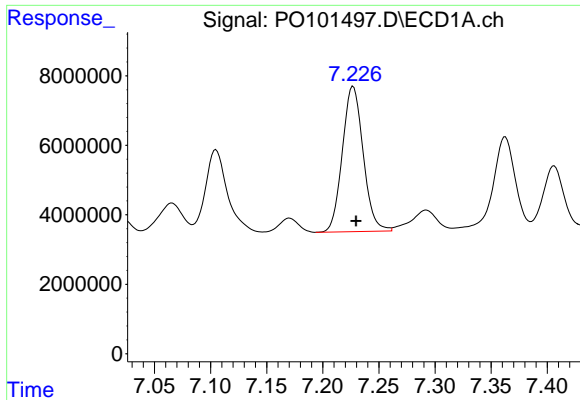
#28 AR-1254-3

R.T.: 6.941 min
 Delta R.T.: -0.003 min
 Response: 81175377
 Conc: 494.30 ng/ml



#28 AR-1254-3

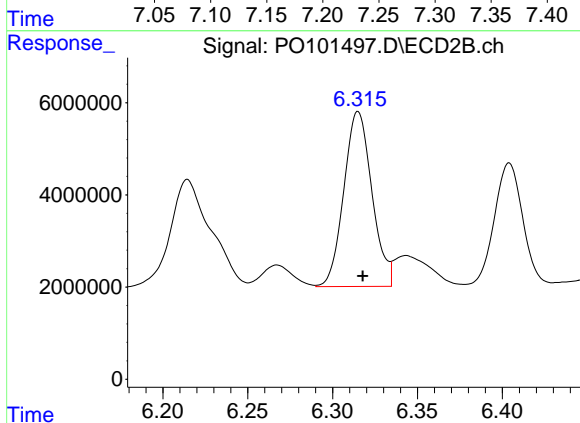
R.T.: 6.085 min
 Delta R.T.: -0.003 min
 Response: 77378649
 Conc: 465.04 ng/ml



#29 AR-1254-4

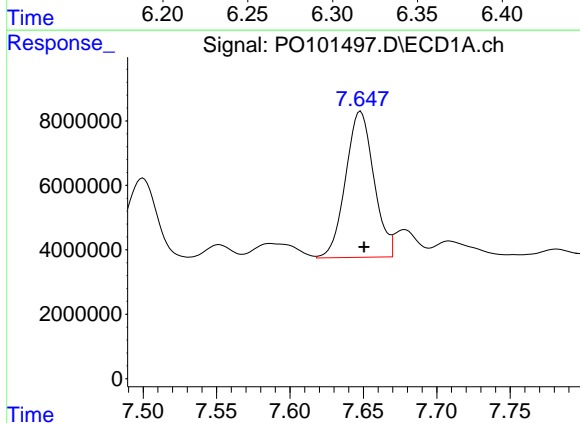
R.T.: 7.227 min
 Delta R.T.: -0.003 min
 Response: 54038510
 Conc: 540.64 ng/ml

Instrument :
 ECD_O
 ClientSampleId :
 AR1254CCC500



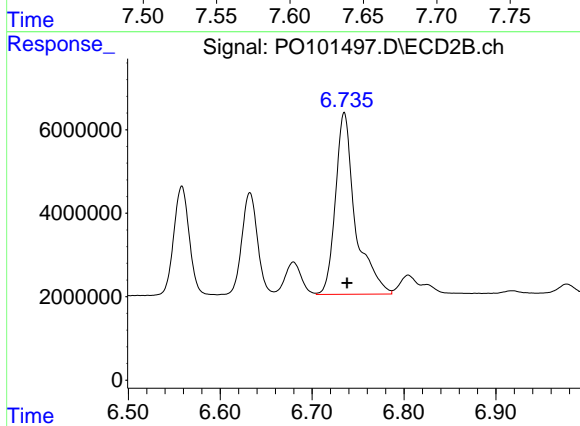
#29 AR-1254-4

R.T.: 6.315 min
 Delta R.T.: -0.003 min
 Response: 43758747
 Conc: 513.02 ng/ml



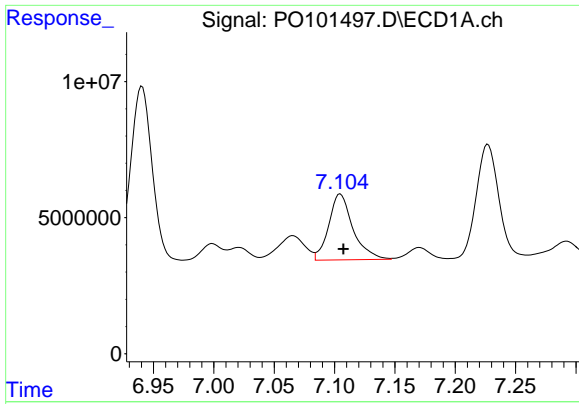
#30 AR-1254-5

R.T.: 7.648 min
 Delta R.T.: -0.002 min
 Response: 60587309
 Conc: 515.50 ng/ml



#30 AR-1254-5

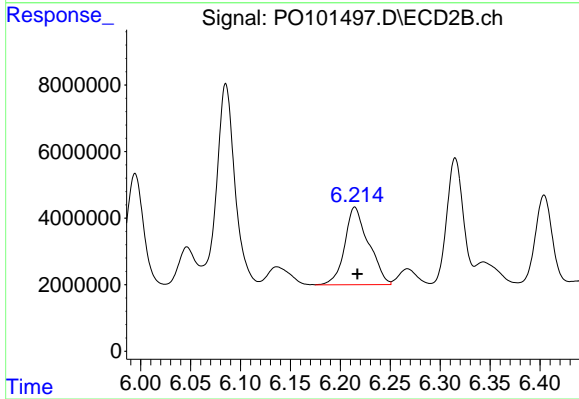
R.T.: 6.735 min
 Delta R.T.: -0.003 min
 Response: 65393539
 Conc: 482.62 ng/ml



#31 AR-1260-1

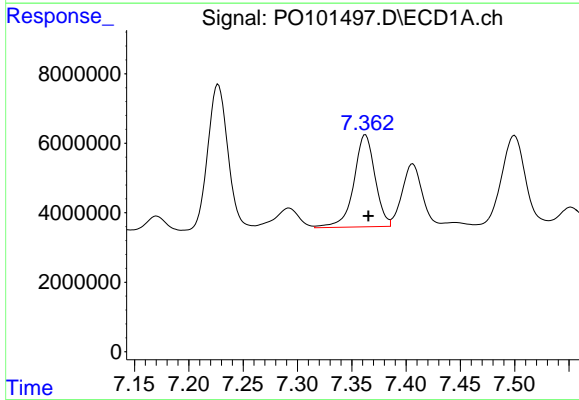
R.T.: 7.105 min
 Delta R.T.: -0.003 min
 Response: 33872454
 Conc: 237.51 ng/ml

Instrument :
 ECD_O
 ClientSampleId :
 AR1254CCC500



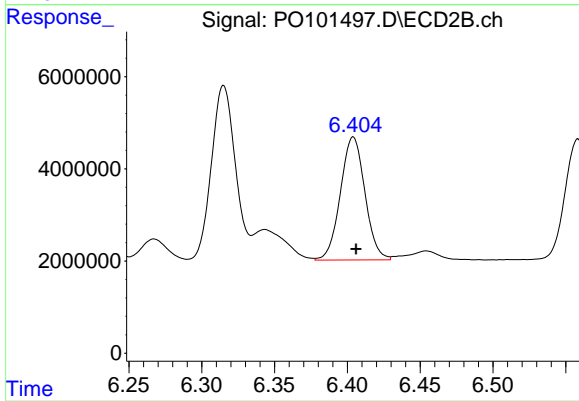
#31 AR-1260-1

R.T.: 6.215 min
 Delta R.T.: -0.003 min
 Response: 38807235
 Conc: 314.50 ng/ml



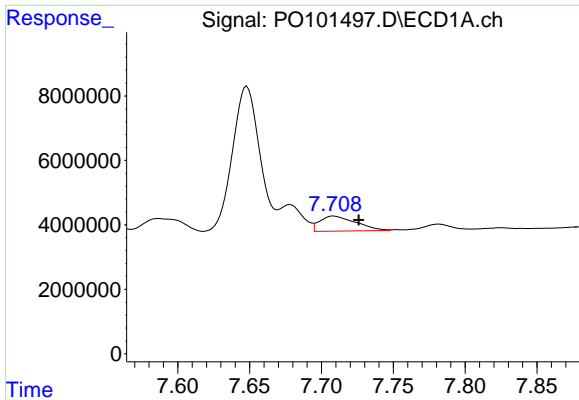
#32 AR-1260-2

R.T.: 7.363 min
 Delta R.T.: -0.003 min
 Response: 35993131
 Conc: 245.71 ng/ml



#32 AR-1260-2

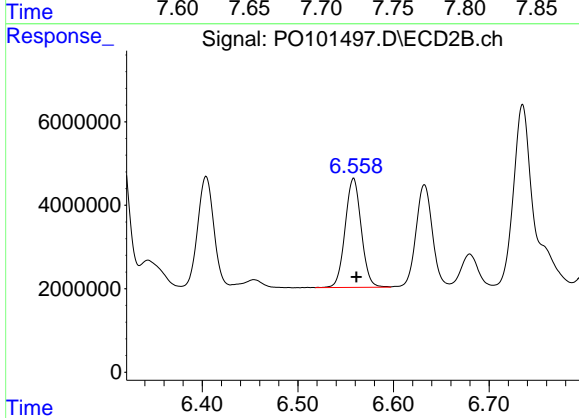
R.T.: 6.404 min
 Delta R.T.: -0.002 min
 Response: 31267381
 Conc: 228.68 ng/ml



#33 AR-1260-3

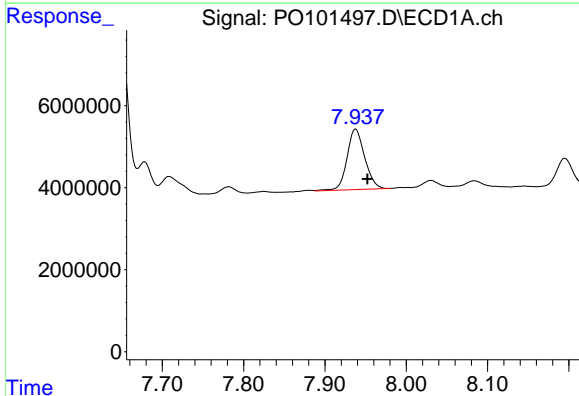
R.T.: 7.708 min
 Delta R.T.: -0.018 min
 Response: 8167453
 Conc: 69.95 ng/ml

Instrument :
 ECD_O
 ClientSampleId :
 AR1254CCC500



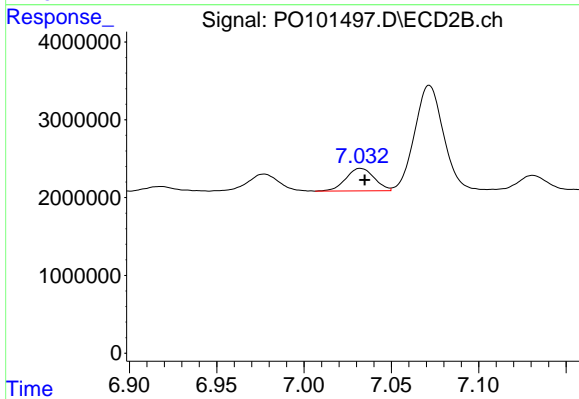
#33 AR-1260-3

R.T.: 6.558 min
 Delta R.T.: -0.003 min
 Response: 30679840
 Conc: 239.15 ng/ml



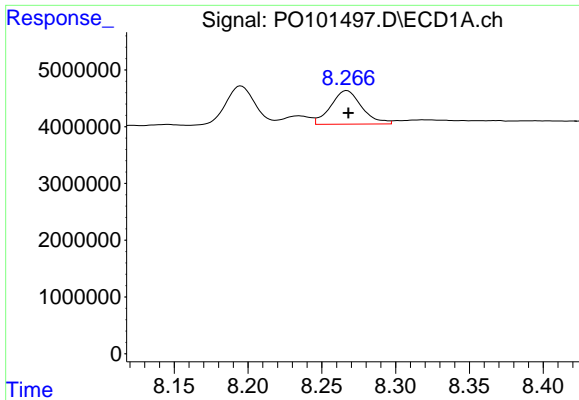
#34 AR-1260-4

R.T.: 7.938 min
 Delta R.T.: -0.014 min
 Response: 22247239
 Conc: 188.97 ng/ml



#34 AR-1260-4

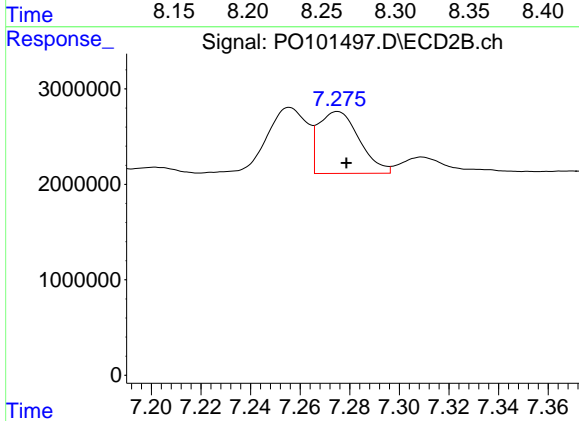
R.T.: 7.032 min
 Delta R.T.: -0.002 min
 Response: 3272525
 Conc: 31.66 ng/ml



#35 AR-1260-5

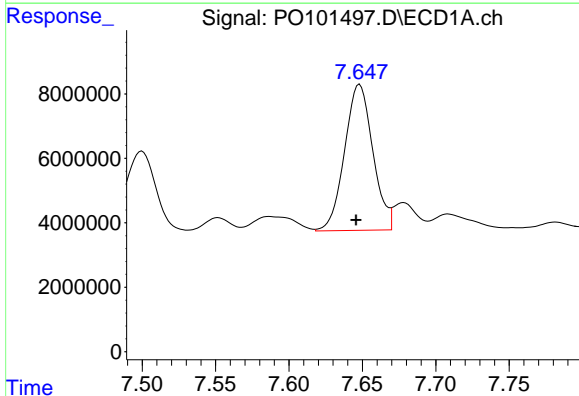
R.T.: 8.267 min
 Delta R.T.: 0.000 min
 Response: 8668068
 Conc: 39.53 ng/ml

Instrument :
 ECD_O
 ClientSampleId :
 AR1254CCC500



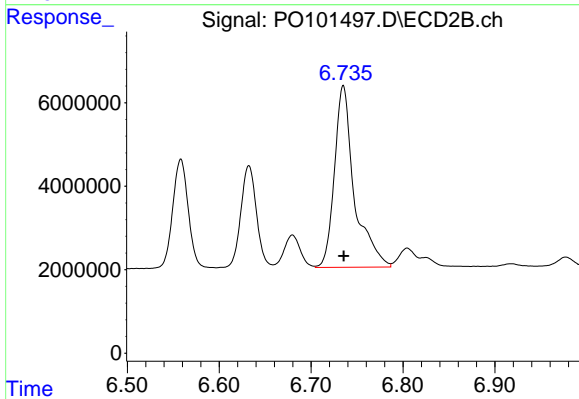
#35 AR-1260-5

R.T.: 7.275 min
 Delta R.T.: -0.004 min
 Response: 7405249
 Conc: 35.28 ng/ml



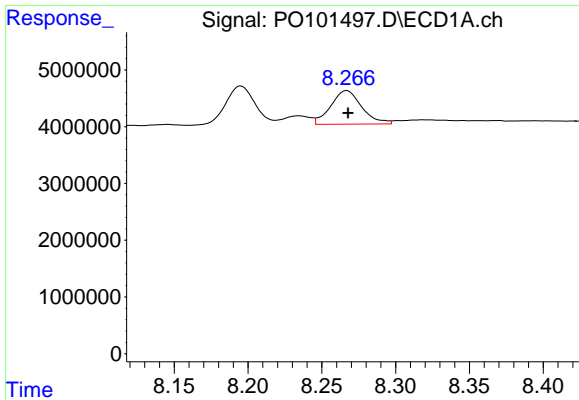
#36 AR-1262-1

R.T.: 7.648 min
 Delta R.T.: 0.003 min
 Response: 60587309
 Conc: 542.15 ng/ml



#36 AR-1262-1

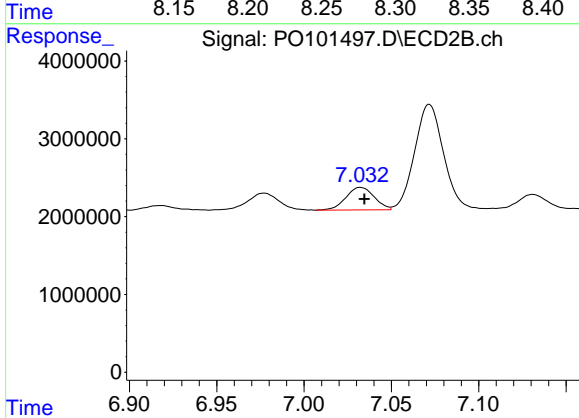
R.T.: 6.735 min
 Delta R.T.: 0.000 min
 Response: 65393539
 Conc: 806.65 ng/ml



#37 AR-1262-2

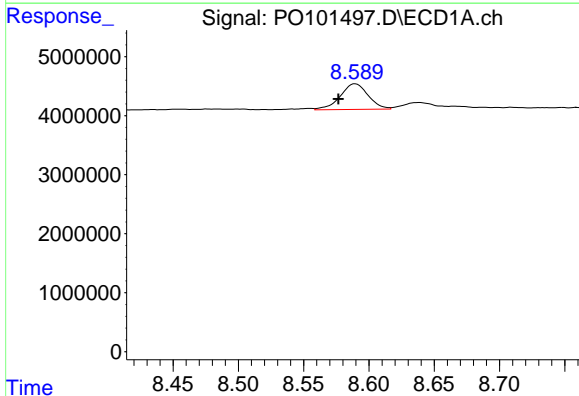
R.T.: 8.267 min
 Delta R.T.: 0.000 min
 Response: 8668068
 Conc: 31.86 ng/ml

Instrument :
 ECD_O
 ClientSampleId :
 AR1254CCC500



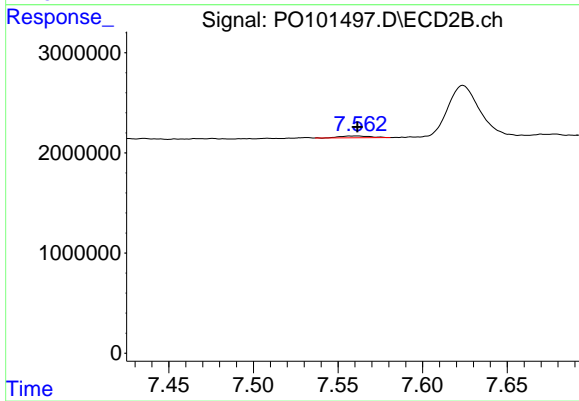
#37 AR-1262-2

R.T.: 7.032 min
 Delta R.T.: -0.002 min
 Response: 3272525
 Conc: 21.99 ng/ml



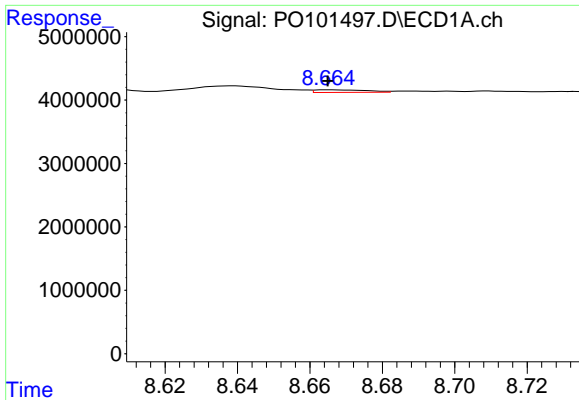
#38 AR-1262-3

R.T.: 8.590 min
 Delta R.T.: 0.013 min
 Response: 6478268
 Conc: 33.30 ng/ml



#38 AR-1262-3

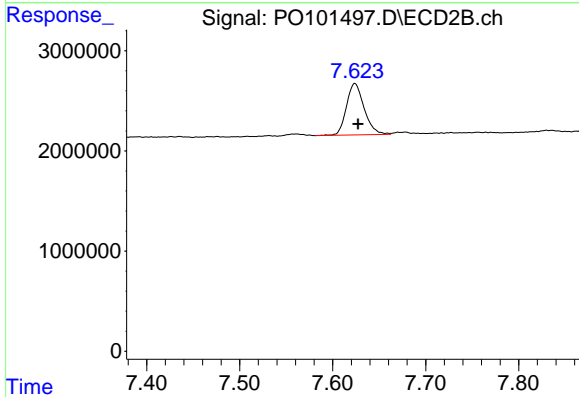
R.T.: 7.561 min
 Delta R.T.: 0.000 min
 Response: 223796
 Conc: 2.18 ng/ml



#39 AR-1262-4

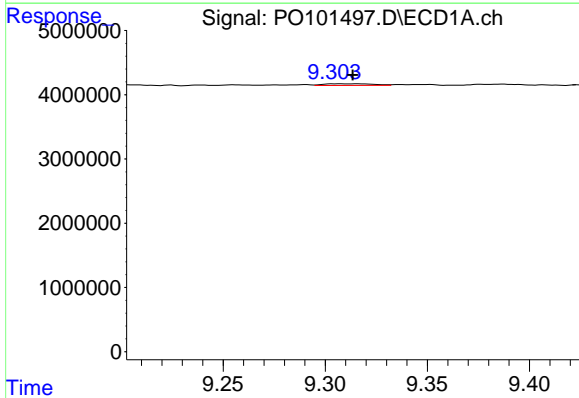
R.T.: 8.666 min
 Delta R.T.: 0.000 min
 Response: 406186
 Conc: 2.62 ng/ml

Instrument :
 ECD_O
 ClientSampleId :
 AR1254CCC500



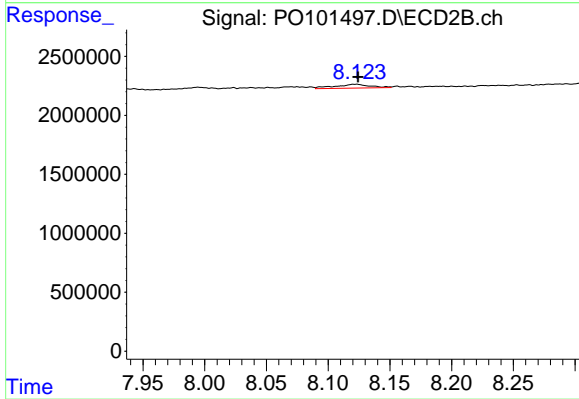
#39 AR-1262-4

R.T.: 7.624 min
 Delta R.T.: -0.003 min
 Response: 6768312
 Conc: 34.66 ng/ml



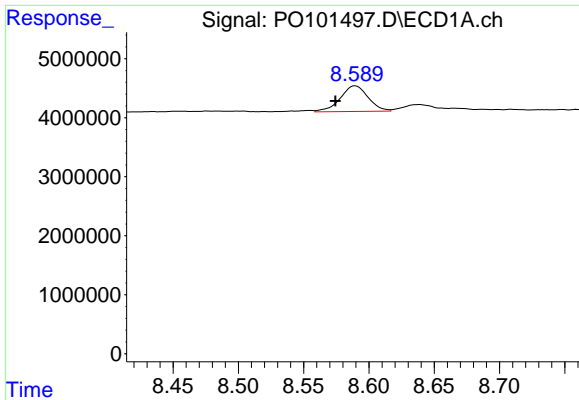
#40 AR-1262-5

R.T.: 9.305 min
 Delta R.T.: -0.008 min
 Response: 446601
 Conc: 4.75 ng/ml



#40 AR-1262-5

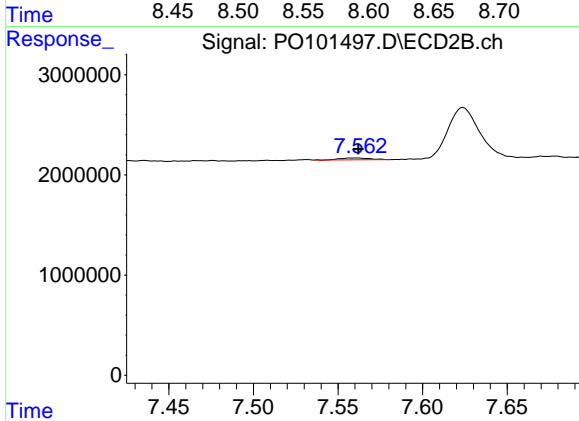
R.T.: 8.122 min
 Delta R.T.: -0.002 min
 Response: 620015
 Conc: 7.40 ng/ml



#41 AR-1268-1

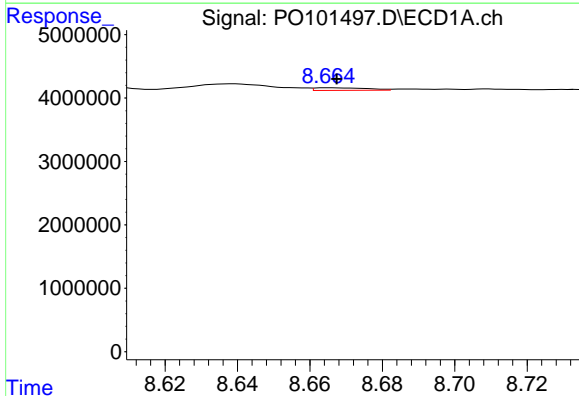
R.T.: 8.590 min
 Delta R.T.: 0.015 min
 Response: 6478268
 Conc: 20.43 ng/ml

Instrument :
 ECD_O
 ClientSampleId :
 AR1254CCC500



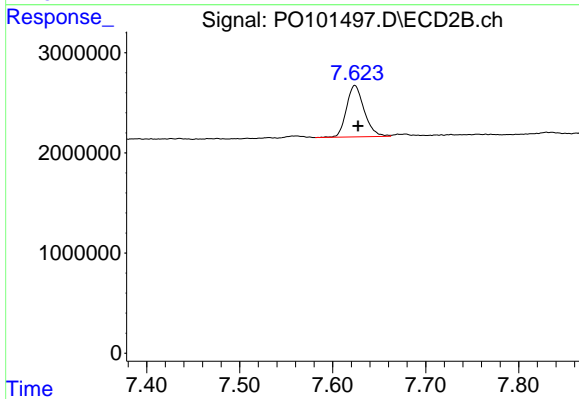
#41 AR-1268-1

R.T.: 7.561 min
 Delta R.T.: -0.001 min
 Response: 223796
 Conc: 0.80 ng/ml



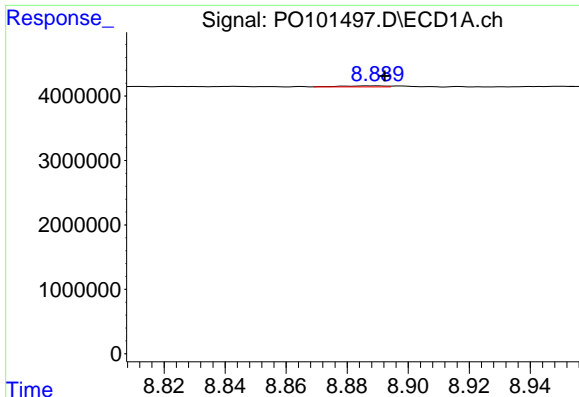
#42 AR-1268-2

R.T.: 8.666 min
 Delta R.T.: -0.002 min
 Response: 406186
 Conc: 1.41 ng/ml



#42 AR-1268-2

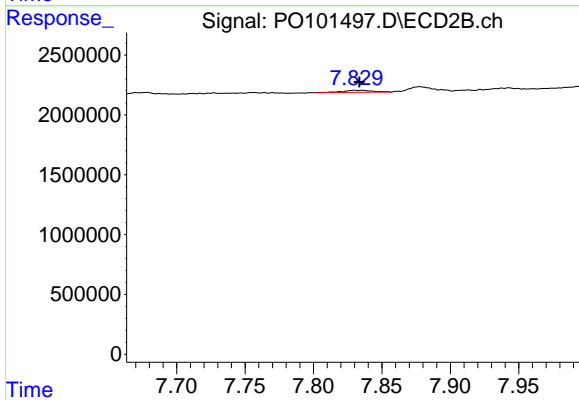
R.T.: 7.624 min
 Delta R.T.: -0.003 min
 Response: 6768312
 Conc: 26.46 ng/ml



#43 AR-1268-3

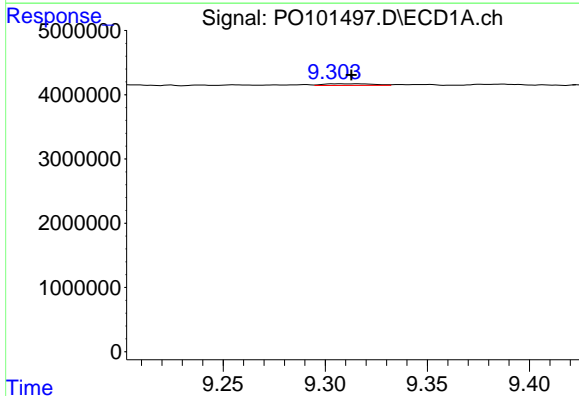
R.T.: 8.889 min
 Delta R.T.: -0.003 min
 Response: 158018
 Conc: 0.61 ng/ml

Instrument :
 ECD_O
 ClientSampleId :
 AR1254CCC500



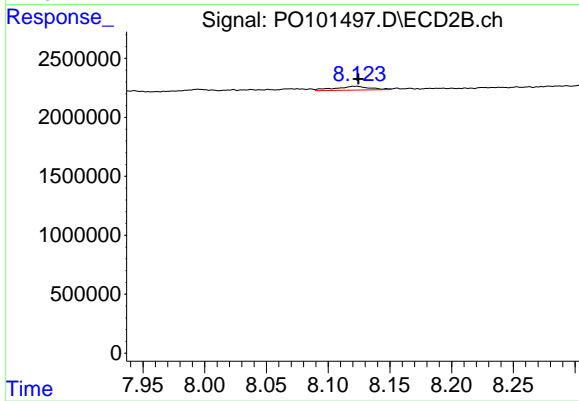
#43 AR-1268-3

R.T.: 7.830 min
 Delta R.T.: -0.004 min
 Response: 254663
 Conc: 1.10 ng/ml



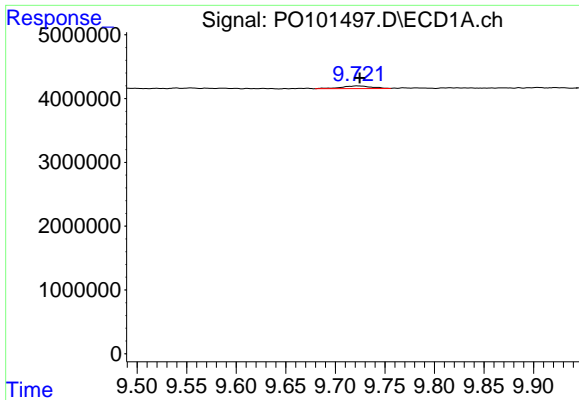
#44 AR-1268-4

R.T.: 9.305 min
 Delta R.T.: -0.008 min
 Response: 446601
 Conc: 4.86 ng/ml



#44 AR-1268-4

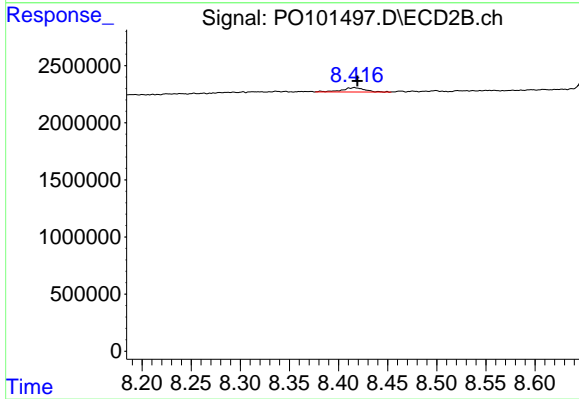
R.T.: 8.122 min
 Delta R.T.: -0.002 min
 Response: 620015
 Conc: 7.30 ng/ml



#45 AR-1268-5

R.T.: 9.722 min
 Delta R.T.: -0.002 min
 Response: 915261
 Conc: 1.14 ng/ml

Instrument :
 ECD_O
 ClientSampleId :
 AR1254CCC500



#45 AR-1268-5

R.T.: 8.416 min
 Delta R.T.: -0.003 min
 Response: 631251
 Conc: 0.96 ng/ml