

Data Path : Z:\pestpcbsrv\HPCHEM1\ECD_0\Data\P0013124\
 Data File : P0101481.D
 Signal(s) : Signal #1: ECD1A.ch Signal #2: ECD2B.ch
 Acq On : 31 Jan 2024 10:04
 Operator : YP/AJ
 Sample : AR1248CCC500
 Misc :
 ALS Vial : 5 Sample Multiplier: 1

Instrument :
 ECD_0
 ClientSampleId :
 AR1248CCC500

Integration File signal 1: autoint1.e
 Integration File signal 2: autoint2.e
 Quant Time: Feb 01 02:05:08 2024
 Quant Method : Z:\pestpcbsrv\HPCHEM1\ECD_0\methods\P0012424.M
 Quant Title : GC EXTRACTABLES
 QLast Update : Wed Jan 24 04:51:39 2024
 Response via : Initial Calibration
 Integrator: ChemStation

Volume Inj. : 2 µl
 Signal #1 Phase : ZB-MR2 Signal #2 Phase: ZB-MR2
 Signal #1 Info : 30Mx0.32mmx 0.50µ Signal #2 Info : 30M x 0.32mm x 0.25µm

Compound	RT#1	RT#2	Resp#1	Resp#2	ng/ml	ng/ml

System Monitoring Compounds						
1) SA Tetrachlo...	4.330	3.629	174.4E6	110.6E6	45.425	42.809
2) SA Decachlor...	10.054	8.674	109.3E6	80513120	46.904	42.487
Target Compounds						
21) L5 AR-1248-1	5.497	4.720	30765803	21967514	530.793	490.948
22) L5 AR-1248-2	5.772	4.959	47743724	32185512	474.080	457.751
23) L5 AR-1248-3	5.975	5.001	48960999	33436906	472.537	459.705
24) L5 AR-1248-4	6.380	5.175	47747358	38676103	525.792	454.953
25) L5 AR-1248-5	6.419	5.570	46579748	34018250	522.217	496.831

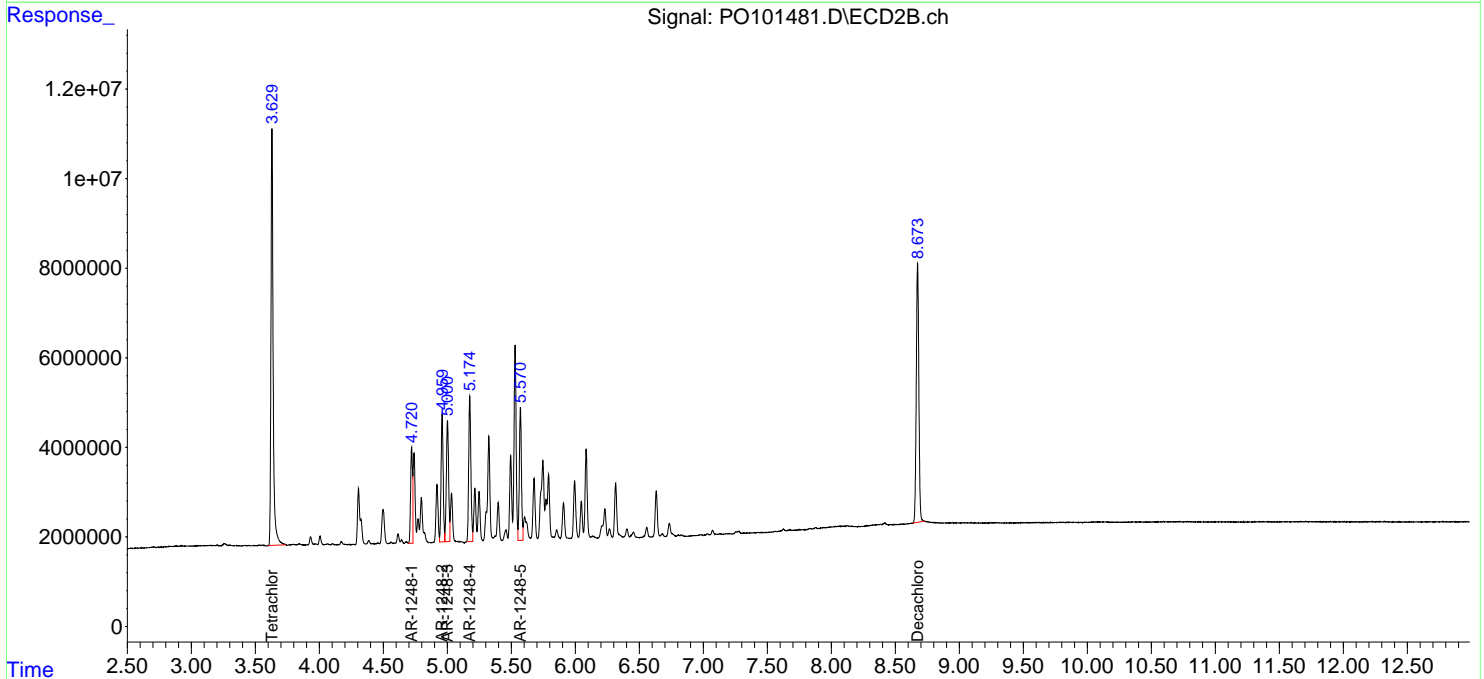
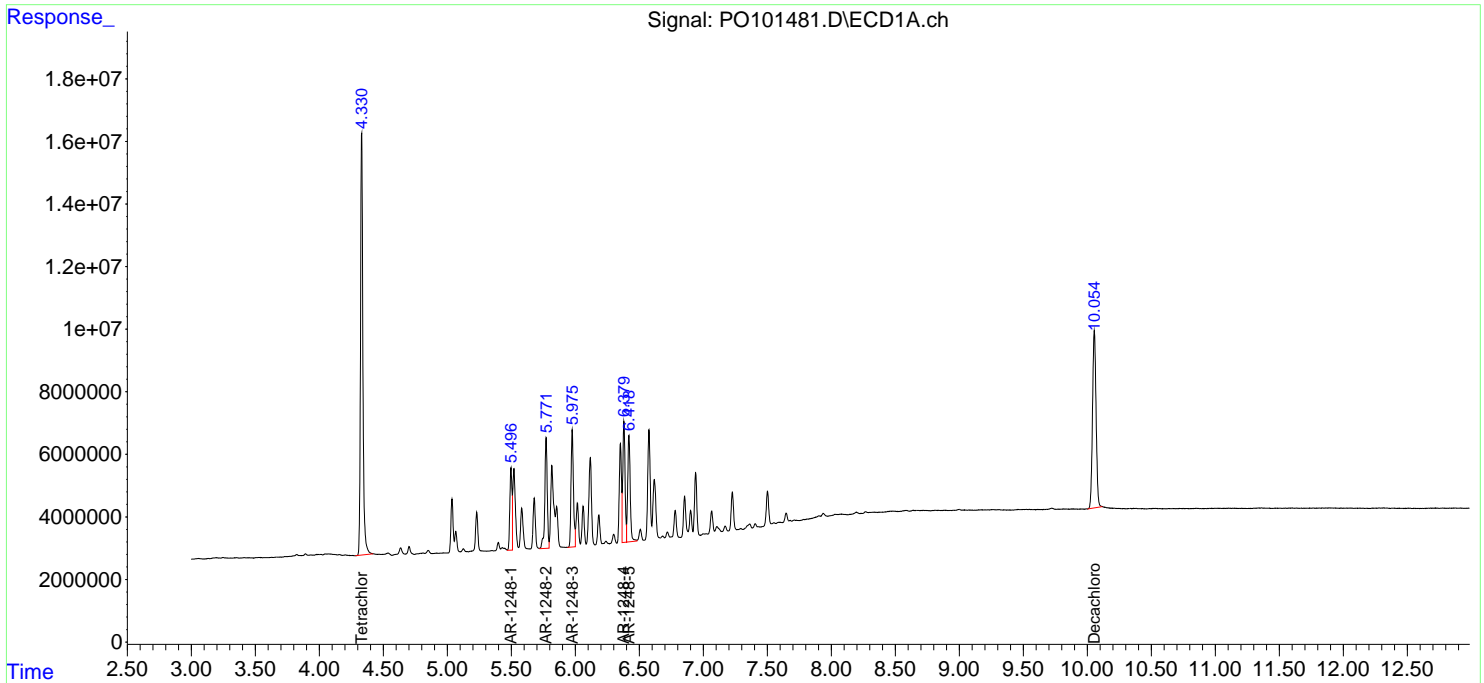
(f)=RT Delta > 1/2 Window (#)=Amounts differ by > 25% (m)=manual int.

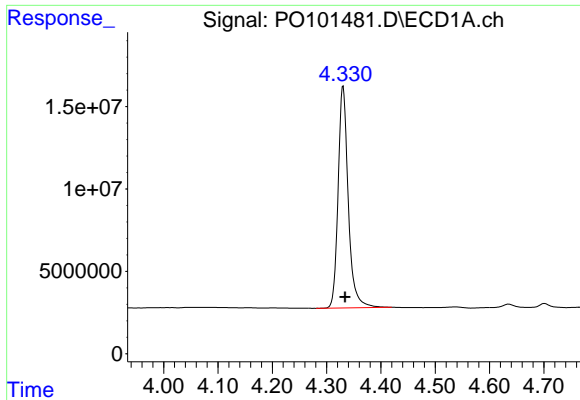
Data Path : Z:\pestpcbsrv\HPCHEM1\ECD_O\Data\PO013124\
 Data File : PO101481.D
 Signal(s) : Signal #1: ECD1A.ch Signal #2: ECD2B.ch
 Acq On : 31 Jan 2024 10:04
 Operator : YP/AJ
 Sample : AR1248CCC500
 Misc :
 ALS Vial : 5 Sample Multiplier: 1

Instrument :
 ECD_O
 ClientSampleId :
 AR1248CCC500

Integration File signal 1: autoint1.e
 Integration File signal 2: autoint2.e
 Quant Time: Feb 01 02:05:08 2024
 Quant Method : Z:\pestpcbsrv\HPCHEM1\ECD_O\methods\PO012424.M
 Quant Title : GC EXTRACTABLES
 QLast Update : Wed Jan 24 04:51:39 2024
 Response via : Initial Calibration
 Integrator: ChemStation

Volume Inj. : 2 µl
 Signal #1 Phase : ZB-MR1 Signal #2 Phase: ZB-MR2
 Signal #1 Info : 30Mx0.32mmx 0.50µ Signal #2 Info : 30M x 0.32mm x 0.25µm

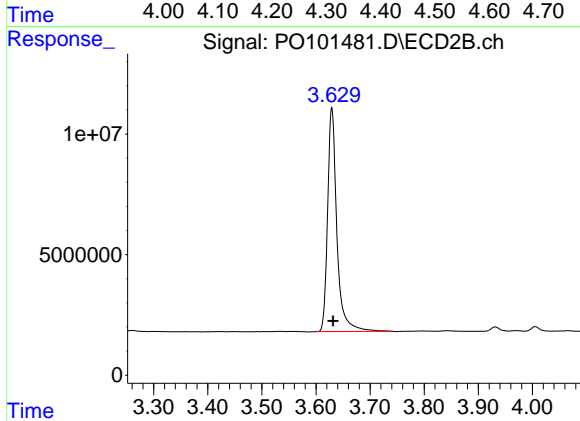




#1 Tetrachloro-m-xylene

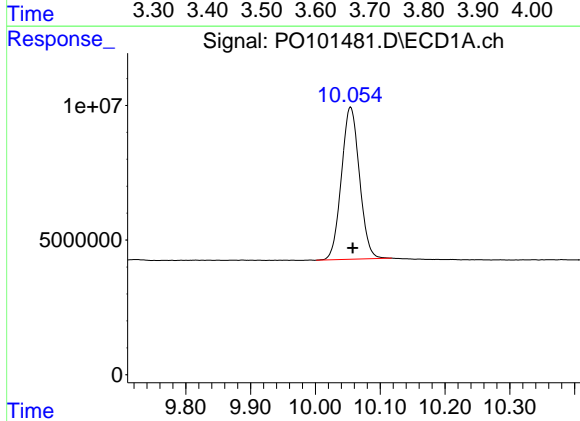
R.T.: 4.330 min
 Delta R.T.: -0.004 min
 Response: 174365615
 Conc: 45.43 ng/ml

Instrument :
 ECD_O
 ClientSampleId :
 AR1248CCC500



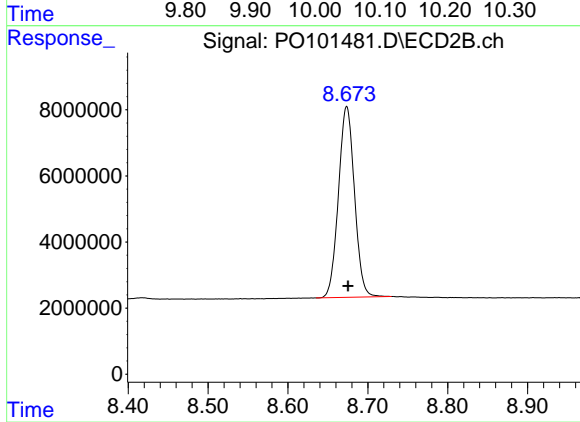
#1 Tetrachloro-m-xylene

R.T.: 3.629 min
 Delta R.T.: -0.002 min
 Response: 110632205
 Conc: 42.81 ng/ml



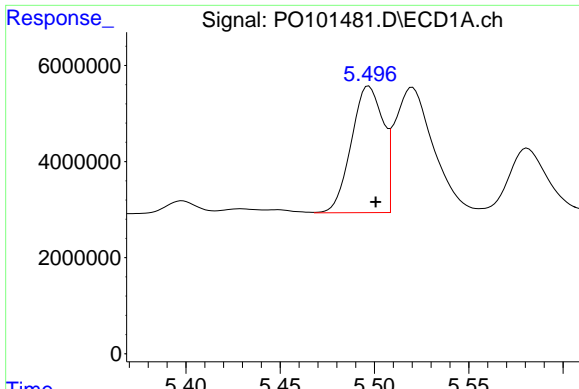
#2 Decachlorobiphenyl

R.T.: 10.054 min
 Delta R.T.: -0.003 min
 Response: 109292725
 Conc: 46.90 ng/ml



#2 Decachlorobiphenyl

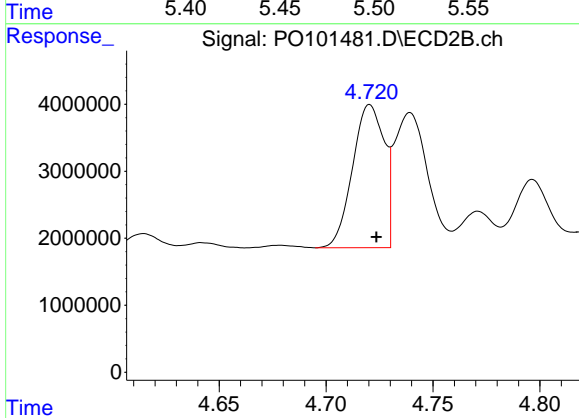
R.T.: 8.674 min
 Delta R.T.: -0.001 min
 Response: 80513120
 Conc: 42.49 ng/ml



#21 AR-1248-1

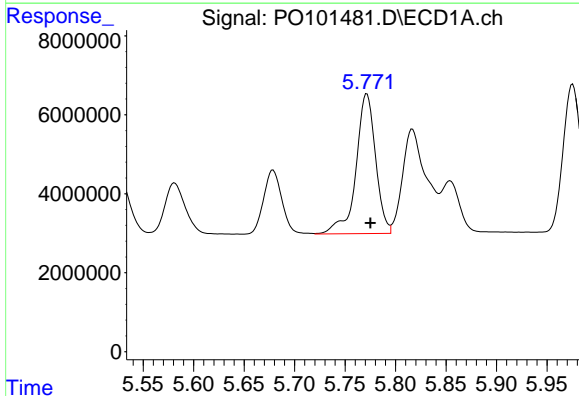
R.T.: 5.497 min
 Delta R.T.: -0.004 min
 Response: 30765803
 Conc: 530.79 ng/ml

Instrument :
 ECD_O
 ClientSampleId :
 AR1248CCC500



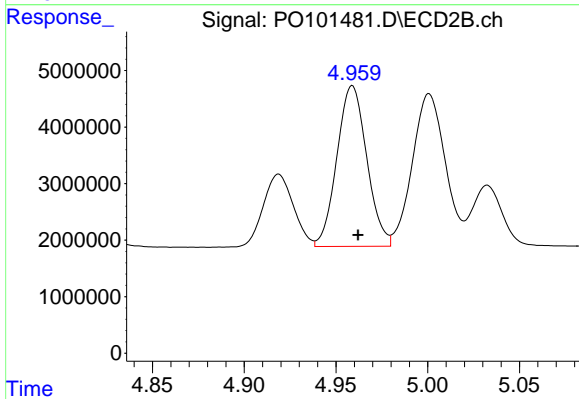
#21 AR-1248-1

R.T.: 4.720 min
 Delta R.T.: -0.003 min
 Response: 21967514
 Conc: 490.95 ng/ml



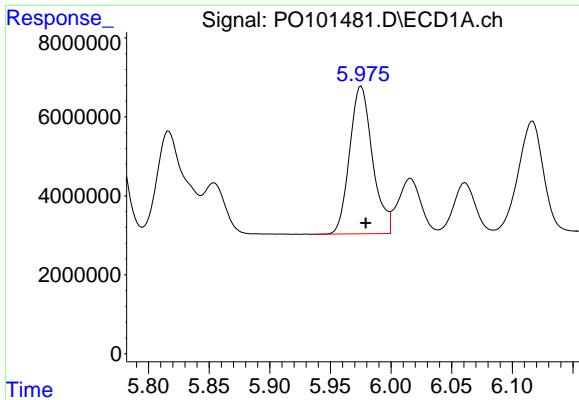
#22 AR-1248-2

R.T.: 5.772 min
 Delta R.T.: -0.004 min
 Response: 47743724
 Conc: 474.08 ng/ml



#22 AR-1248-2

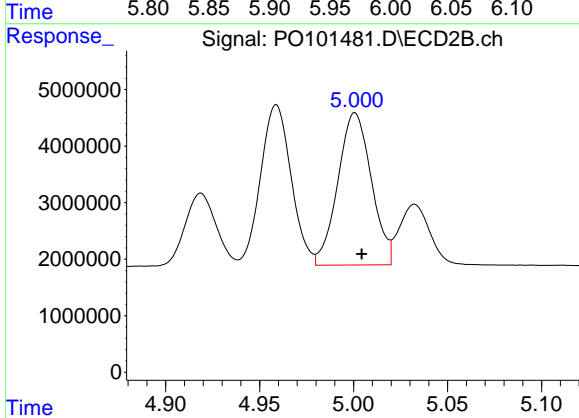
R.T.: 4.959 min
 Delta R.T.: -0.003 min
 Response: 32185512
 Conc: 457.75 ng/ml



#23 AR-1248-3

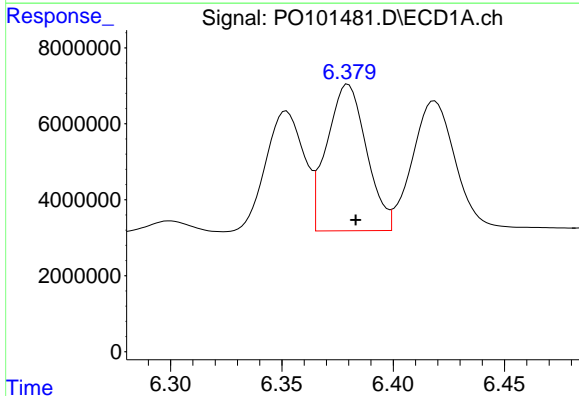
R.T.: 5.975 min
 Delta R.T.: -0.004 min
 Response: 48960999
 Conc: 472.54 ng/ml

Instrument :
 ECD_O
 ClientSampleId :
 AR1248CCC500



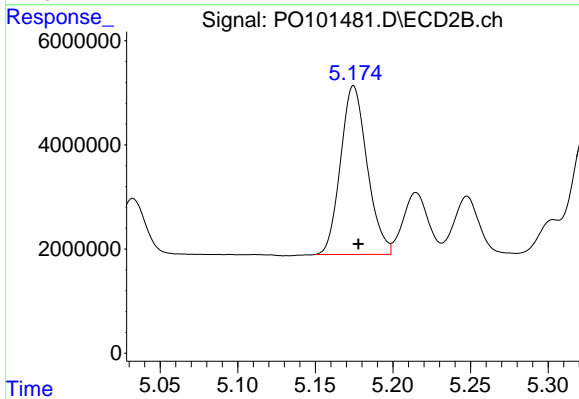
#23 AR-1248-3

R.T.: 5.001 min
 Delta R.T.: -0.004 min
 Response: 33436906
 Conc: 459.71 ng/ml



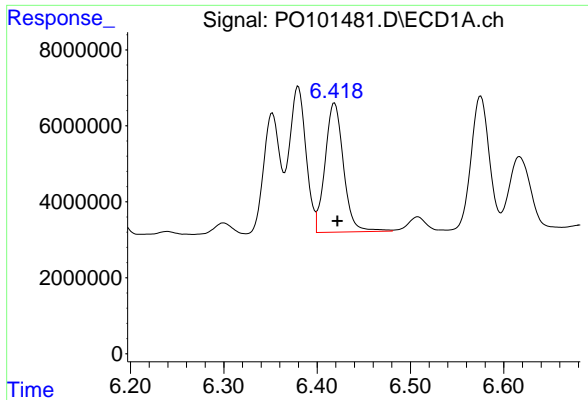
#24 AR-1248-4

R.T.: 6.380 min
 Delta R.T.: -0.003 min
 Response: 47747358
 Conc: 525.79 ng/ml



#24 AR-1248-4

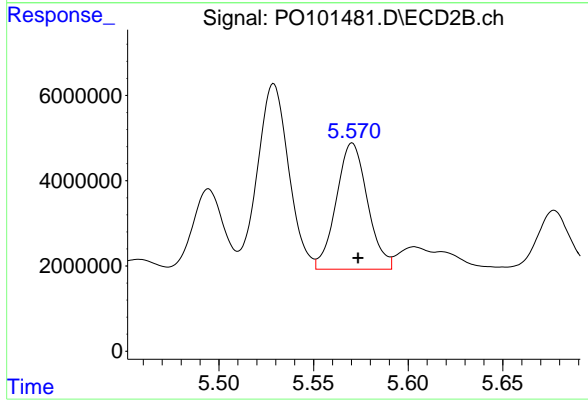
R.T.: 5.175 min
 Delta R.T.: -0.003 min
 Response: 38676103
 Conc: 454.95 ng/ml



#25 AR-1248-5

R.T.: 6.419 min
 Delta R.T.: -0.003 min
 Response: 46579748
 Conc: 522.22 ng/ml

Instrument :
 ECD_O
 ClientSampleId :
 AR1248CCC500



#25 AR-1248-5

R.T.: 5.570 min
 Delta R.T.: -0.003 min
 Response: 34018250
 Conc: 496.83 ng/ml