

Data Path : Z:\pestpcbsrv\HPCHEM1\ECD\_0\Data\P0013124\  
 Data File : P0101484.D  
 Signal(s) : Signal #1: ECD1A.ch Signal #2: ECD2B.ch  
 Acq On : 31 Jan 2024 15:08  
 Operator : YP/AJ  
 Sample : PB158725BL  
 Misc :  
 ALS Vial : 7 Sample Multiplier: 1

**Instrument :**  
 ECD\_0  
**ClientSampleId :**  
 PB158725BL

Integration File signal 1: autoint1.e  
 Integration File signal 2: autoint2.e  
 Quant Time: Feb 01 02:06:48 2024  
 Quant Method : Z:\pestpcbsrv\HPCHEM1\ECD\_0\methods\P0012424.M  
 Quant Title : GC EXTRACTABLES  
 QLast Update : Wed Jan 24 04:51:39 2024  
 Response via : Initial Calibration  
 Integrator: ChemStation

Volume Inj. : 2 µl  
 Signal #1 Phase : ZB-MR1 Signal #2 Phase: ZB-MR2  
 Signal #1 Info : 30Mx0.32mmx 0.50µ Signal #2 Info : 30M x 0.32mm x 0.25µm

Compound	RT#1	RT#2	Resp#1	Resp#2	ng/ml	ng/ml
-----						
System Monitoring Compounds						
1) SA Tetrachlo...	4.331	3.629	82400190	51067632	21.467	19.761
2) SA Decachlor...	10.059	8.673	50573422	37833381	21.704	19.965

Target Compounds

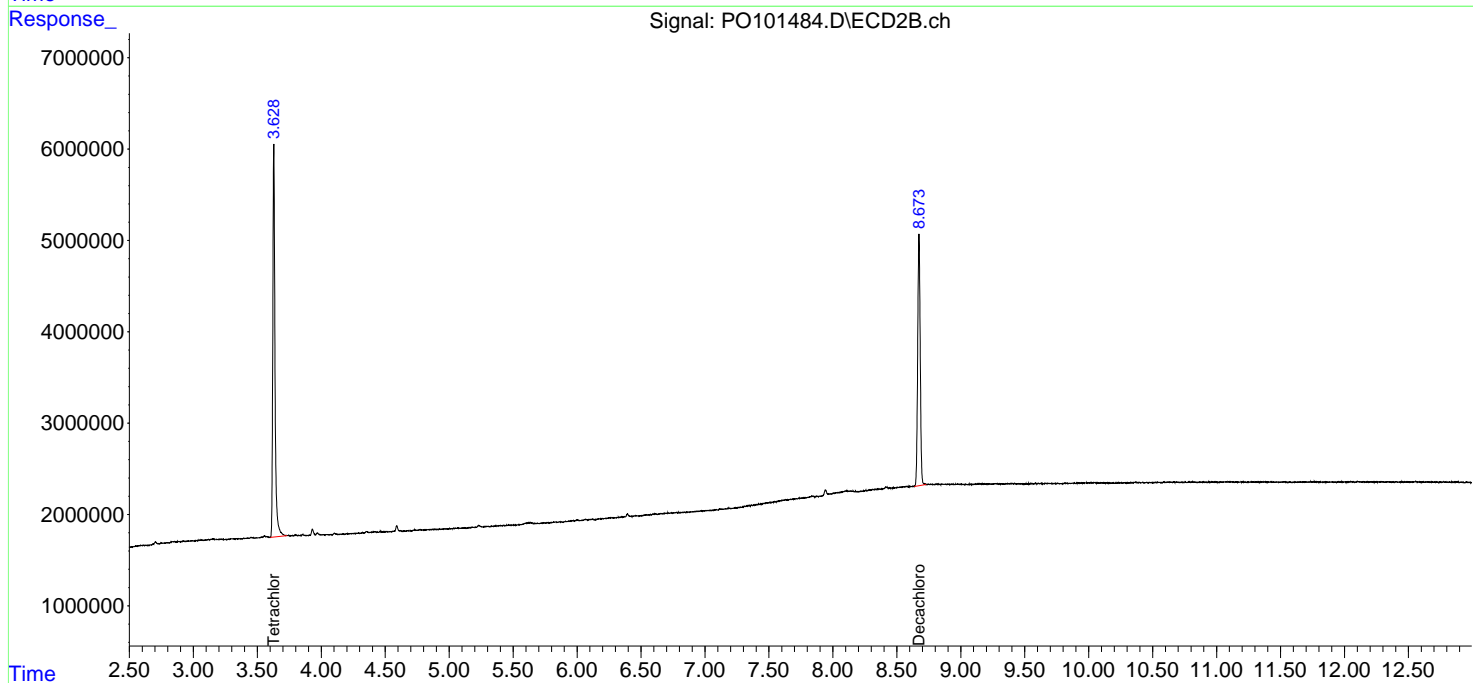
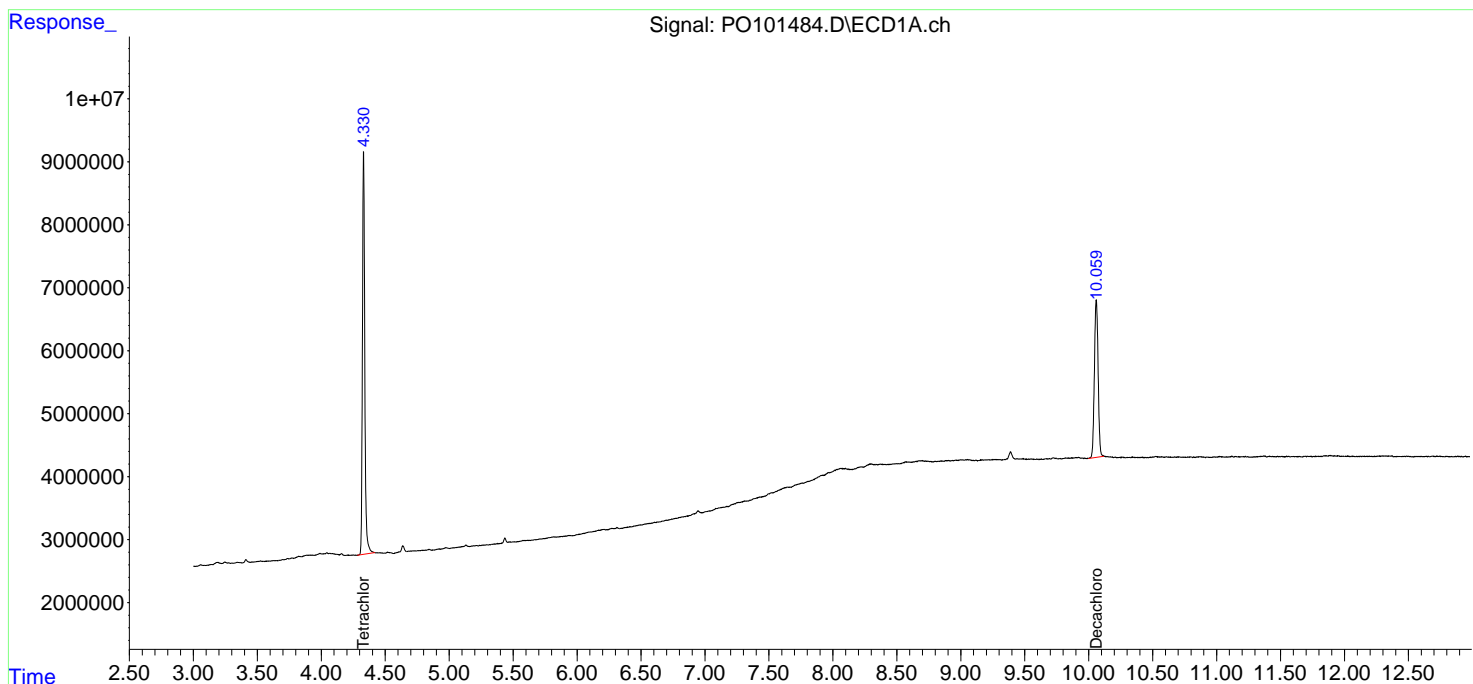
-----  
 (f)=RT Delta > 1/2 Window (#)=Amounts differ by > 25% (m)=manual int.

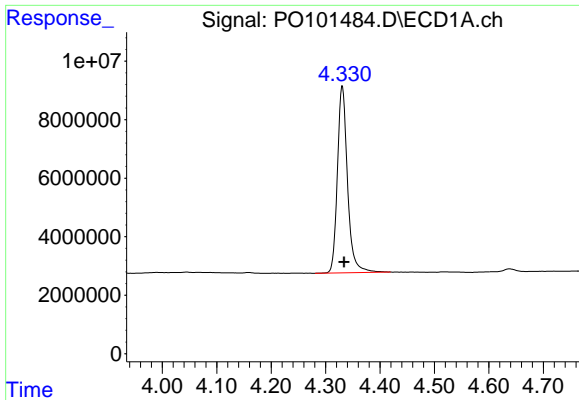
Data Path : Z:\pestpcbsrv\HPCHEM1\ECD\_O\Data\PO013124\  
 Data File : PO101484.D  
 Signal(s) : Signal #1: ECD1A.ch Signal #2: ECD2B.ch  
 Acq On : 31 Jan 2024 15:08  
 Operator : YP/AJ  
 Sample : PB158725BL  
 Misc :  
 ALS Vial : 7 Sample Multiplier: 1

Instrument :  
 ECD\_O  
 ClientSampleId :  
 PB158725BL

Integration File signal 1: autoint1.e  
 Integration File signal 2: autoint2.e  
 Quant Time: Feb 01 02:06:48 2024  
 Quant Method : Z:\pestpcbsrv\HPCHEM1\ECD\_O\methods\PO012424.M  
 Quant Title : GC EXTRACTABLES  
 QLast Update : Wed Jan 24 04:51:39 2024  
 Response via : Initial Calibration  
 Integrator: ChemStation

Volume Inj. : 2 µl  
 Signal #1 Phase : ZB-MR1 Signal #2 Phase: ZB-MR2  
 Signal #1 Info : 30Mx0.32mmx 0.50µ Signal #2 Info : 30M x 0.32mm x 0.25µm

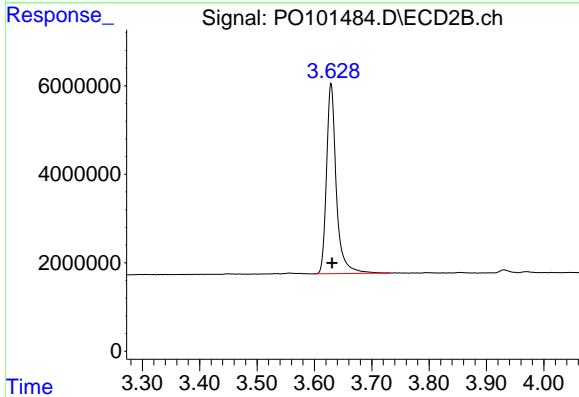




#1 Tetrachloro-m-xylene

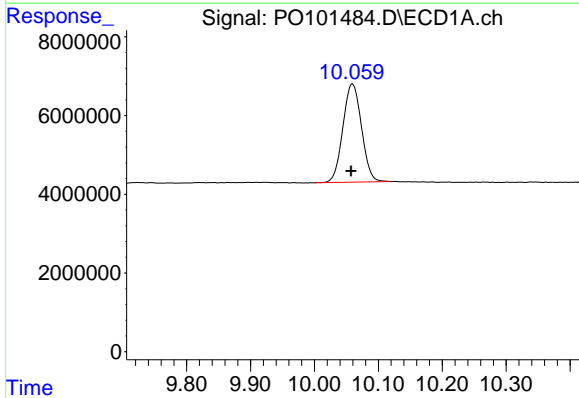
R.T.: 4.331 min  
 Delta R.T.: -0.003 min  
 Response: 82400190  
 Conc: 21.47 ng/ml

Instrument :  
 ECD\_O  
 ClientSampleId :  
 PB158725BL



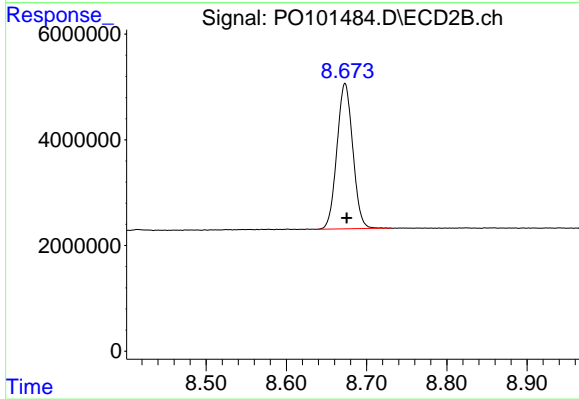
#1 Tetrachloro-m-xylene

R.T.: 3.629 min  
 Delta R.T.: -0.002 min  
 Response: 51067632  
 Conc: 19.76 ng/ml



#2 Decachlorobiphenyl

R.T.: 10.059 min  
 Delta R.T.: 0.002 min  
 Response: 50573422  
 Conc: 21.70 ng/ml



#2 Decachlorobiphenyl

R.T.: 8.673 min  
 Delta R.T.: -0.002 min  
 Response: 37833381  
 Conc: 19.96 ng/ml