

Data Path : Z:\pestpcbsrv\HPCHEM1\ECD_0\Data\P0013124\
 Data File : P0101485.D
 Signal(s) : Signal #1: ECD1A.ch Signal #2: ECD2B.ch
 Acq On : 31 Jan 2024 15:25
 Operator : YP/AJ
 Sample : PB158725BS
 Misc :
 ALS Vial : 8 Sample Multiplier: 1

Instrument :
 ECD_0
 ClientSampleId :
 PB158725BS

Integration File signal 1: autoint1.e
 Integration File signal 2: autoint2.e
 Quant Time: Feb 01 02:07:22 2024
 Quant Method : Z:\pestpcbsrv\HPCHEM1\ECD_0\methods\P0012424.M
 Quant Title : GC EXTRACTABLES
 QLast Update : Wed Jan 24 04:51:39 2024
 Response via : Initial Calibration
 Integrator: ChemStation

Volume Inj. : 2 µl
 Signal #1 Phase : ZB-MR2 Signal #2 Phase: ZB-MR2
 Signal #1 Info : 30Mx0.32mmx 0.50µ Signal #2 Info : 30M x 0.32mm x 0.25µm

	Compound	RT#1	RT#2	Resp#1	Resp#2	ng/ml	ng/ml

System Monitoring Compounds							
1)	SA Tetrachlo...	4.331	3.629	79271225	45727990	20.651	17.694
2)	SA Decachlor...	10.056	8.672	49179970	37188083	21.106	19.624
Target Compounds							
3)	L1 AR-1016-1	5.498	4.721	47195147	31844688	482.797	430.757
4)	L1 AR-1016-2	5.520	4.740	68741860	44143939	499.738	447.877
5)	L1 AR-1016-3	5.582	4.918	44551107	23546838	496.619	429.206
6)	L1 AR-1016-4	5.680	4.959	35685746	21266867	499.296	418.488
7)	L1 AR-1016-5	5.976	5.175	35390542	26592995	447.723	407.332
31)	L7 AR-1260-1	7.105	6.214	60191599	50186371	422.063	406.715
32)	L7 AR-1260-2	7.363	6.404	65337914	58342640	446.043	426.696
33)	L7 AR-1260-3	7.725	6.558	43745175	53773711	374.638	419.176
34)	L7 AR-1260-4	7.951	7.033	50393819	38116850	428.051	368.813
35)	L7 AR-1260-5	8.267	7.276	91960350	83492468	419.357	397.755

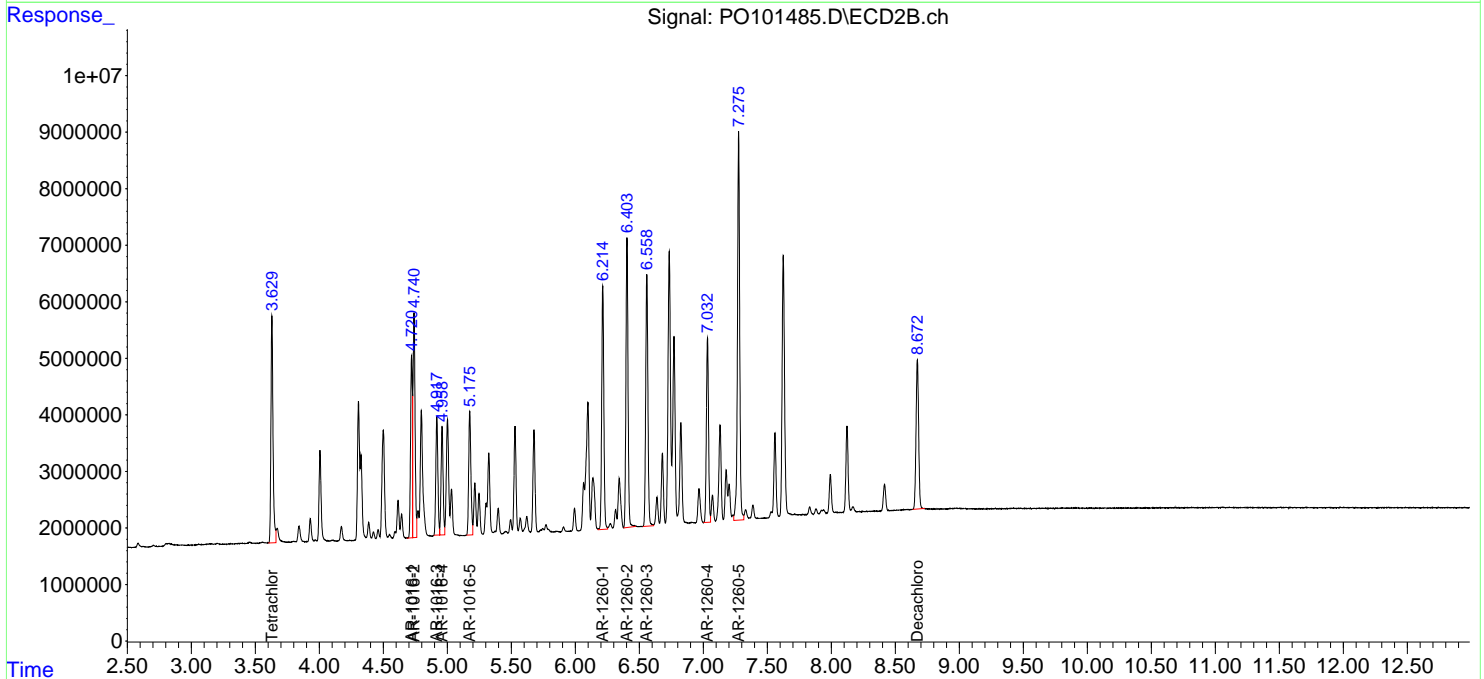
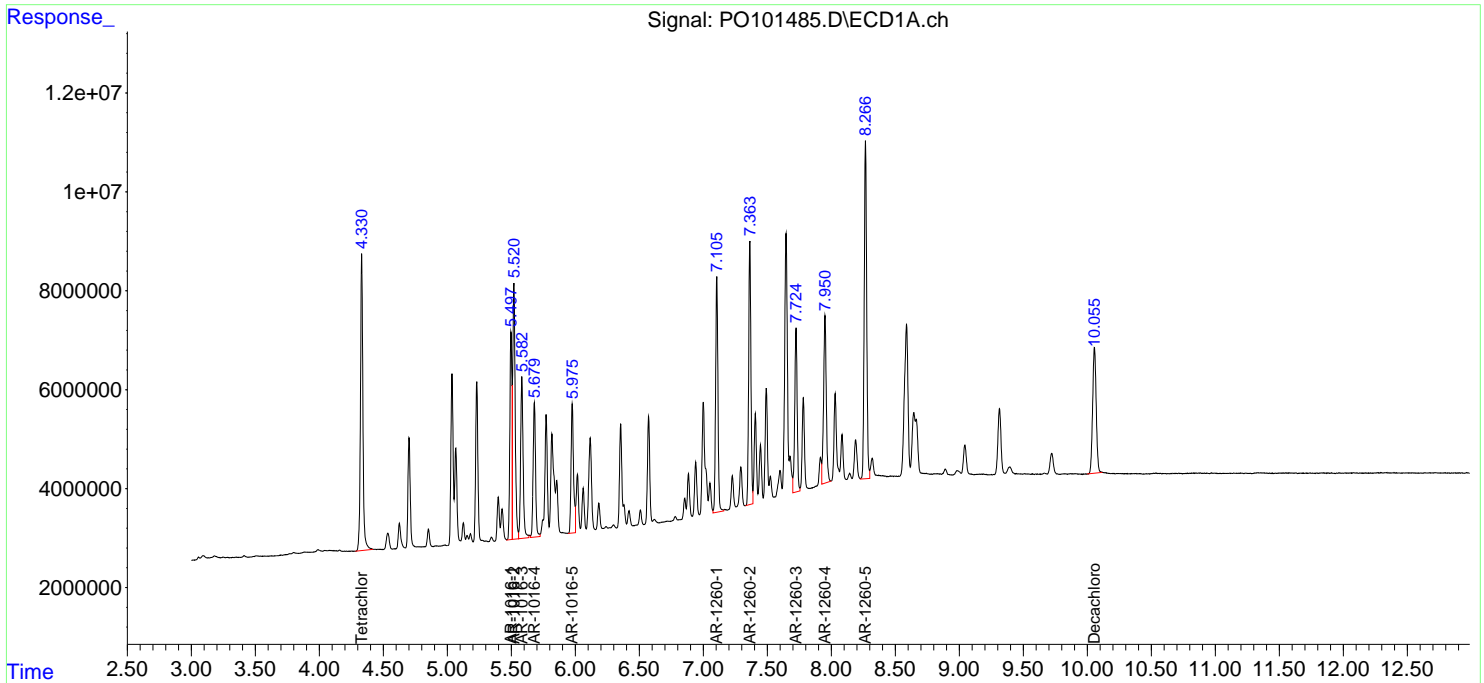
(f)=RT Delta > 1/2 Window (#)=Amounts differ by > 25% (m)=manual int.

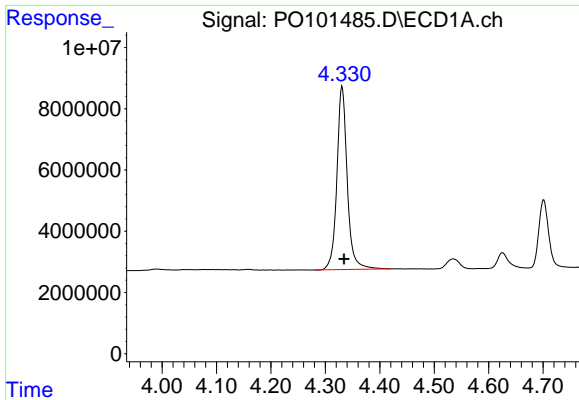
Data Path : Z:\pestpcbsrv\HPCHEM1\ECD_O\Data\PO013124\
 Data File : PO101485.D
 Signal(s) : Signal #1: ECD1A.ch Signal #2: ECD2B.ch
 Acq On : 31 Jan 2024 15:25
 Operator : YP/AJ
 Sample : PB158725BS
 Misc :
 ALS Vial : 8 Sample Multiplier: 1

Instrument :
 ECD_O
 ClientSampleId :
 PB158725BS

Integration File signal 1: autoint1.e
 Integration File signal 2: autoint2.e
 Quant Time: Feb 01 02:07:22 2024
 Quant Method : Z:\pestpcbsrv\HPCHEM1\ECD_O\methods\PO012424.M
 Quant Title : GC EXTRACTABLES
 QLast Update : Wed Jan 24 04:51:39 2024
 Response via : Initial Calibration
 Integrator: ChemStation

Volume Inj. : 2 µl
 Signal #1 Phase : ZB-MR1 Signal #2 Phase: ZB-MR2
 Signal #1 Info : 30Mx0.32mmx 0.50µ Signal #2 Info : 30M x 0.32mm x 0.25µm

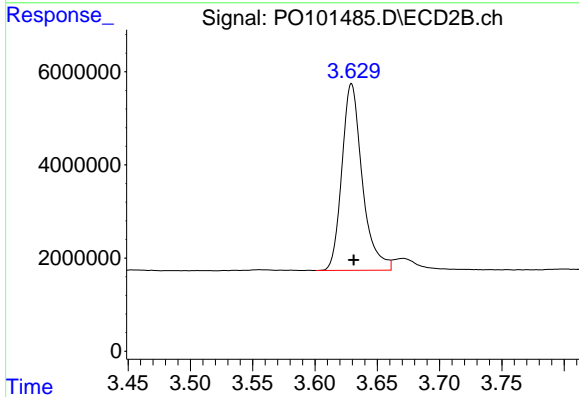




#1 Tetrachloro-m-xylene

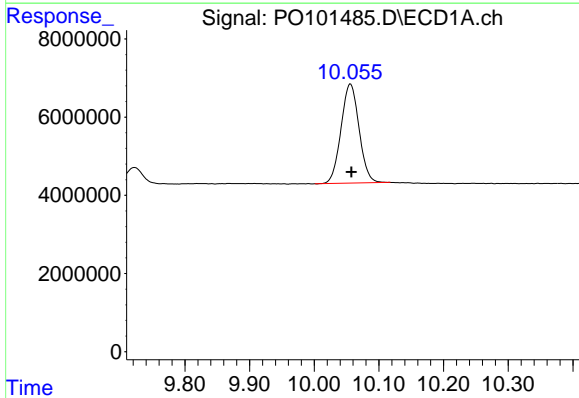
R.T.: 4.331 min
 Delta R.T.: -0.003 min
 Response: 79271225
 Conc: 20.65 ng/ml

Instrument :
 ECD_O
 ClientSampleId :
 PB158725BS



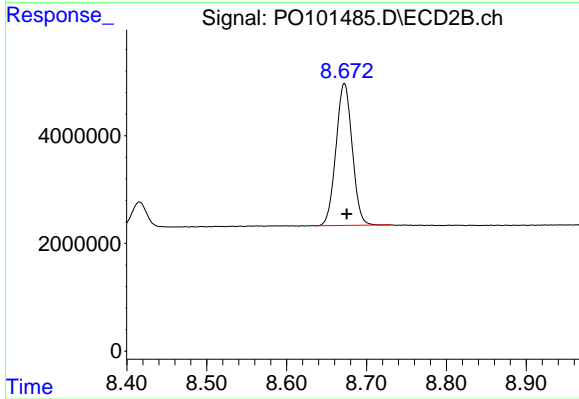
#1 Tetrachloro-m-xylene

R.T.: 3.629 min
 Delta R.T.: -0.002 min
 Response: 45727990
 Conc: 17.69 ng/ml



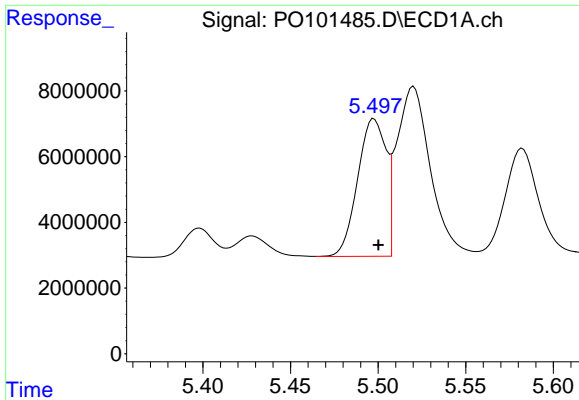
#2 Decachlorobiphenyl

R.T.: 10.056 min
 Delta R.T.: -0.001 min
 Response: 49179970
 Conc: 21.11 ng/ml



#2 Decachlorobiphenyl

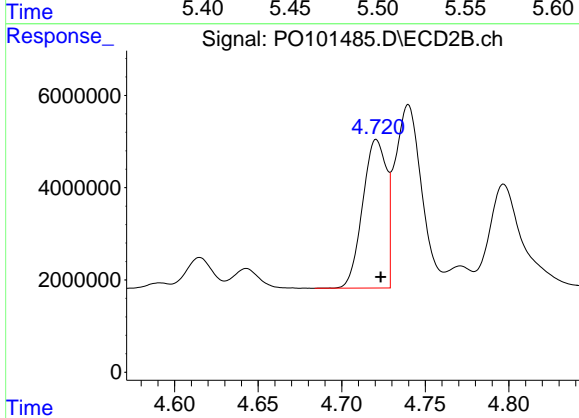
R.T.: 8.672 min
 Delta R.T.: -0.003 min
 Response: 37188083
 Conc: 19.62 ng/ml



#3 AR-1016-1

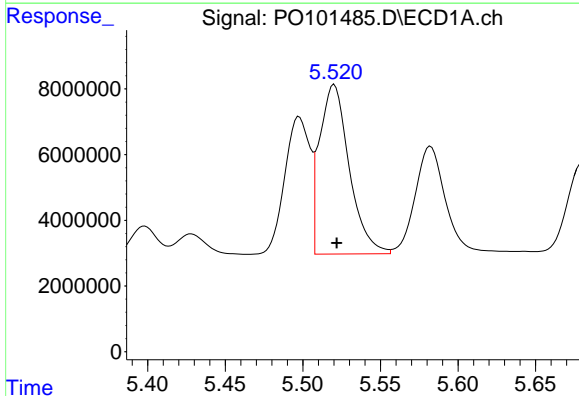
R.T.: 5.498 min
 Delta R.T.: -0.002 min
 Response: 47195147
 Conc: 482.80 ng/ml

Instrument :
 ECD_O
 ClientSampleId :
 PB158725BS



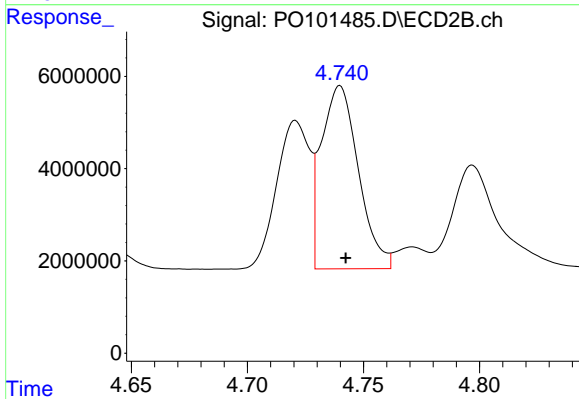
#3 AR-1016-1

R.T.: 4.721 min
 Delta R.T.: -0.003 min
 Response: 31844688
 Conc: 430.76 ng/ml



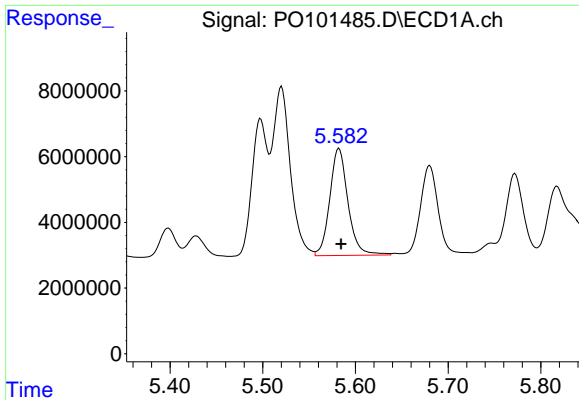
#4 AR-1016-2

R.T.: 5.520 min
 Delta R.T.: -0.002 min
 Response: 68741860
 Conc: 499.74 ng/ml



#4 AR-1016-2

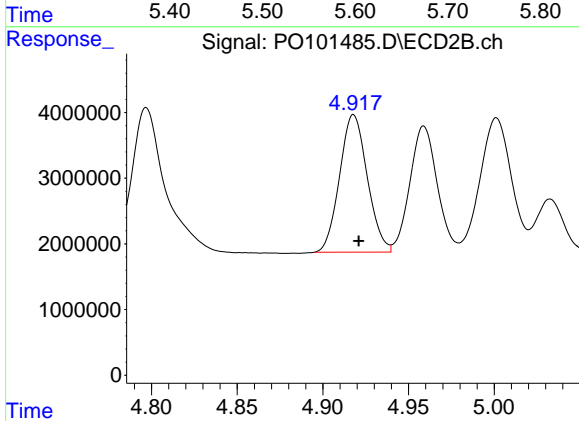
R.T.: 4.740 min
 Delta R.T.: -0.003 min
 Response: 44143939
 Conc: 447.88 ng/ml



#5 AR-1016-3

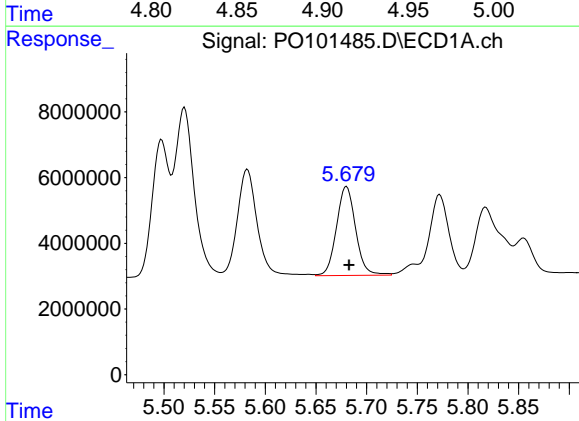
R.T.: 5.582 min
 Delta R.T.: -0.002 min
 Response: 44551107
 Conc: 496.62 ng/ml

Instrument :
 ECD_O
 ClientSampleId :
 PB158725BS



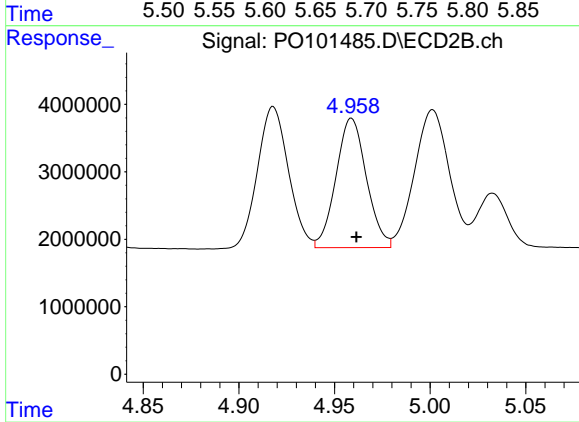
#5 AR-1016-3

R.T.: 4.918 min
 Delta R.T.: -0.003 min
 Response: 23546838
 Conc: 429.21 ng/ml



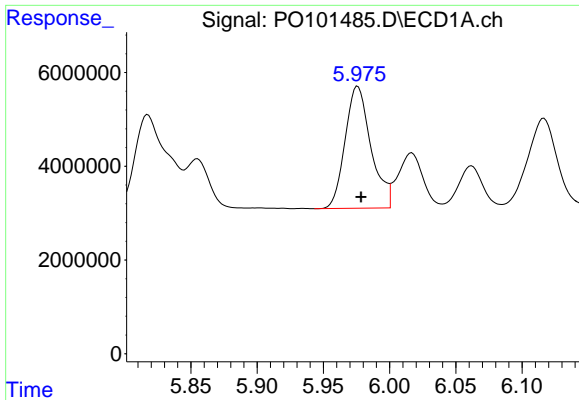
#6 AR-1016-4

R.T.: 5.680 min
 Delta R.T.: -0.003 min
 Response: 35685746
 Conc: 499.30 ng/ml



#6 AR-1016-4

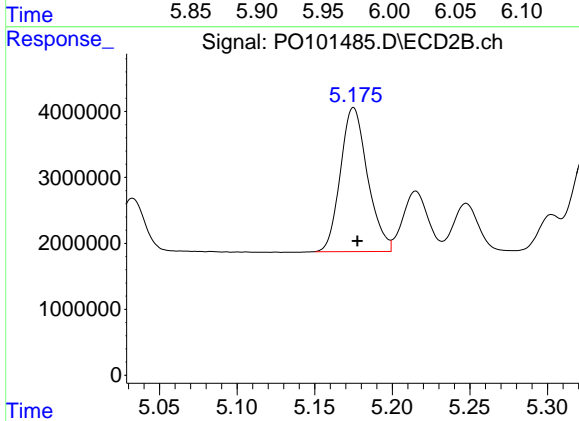
R.T.: 4.959 min
 Delta R.T.: -0.003 min
 Response: 21266867
 Conc: 418.49 ng/ml



#7 AR-1016-5

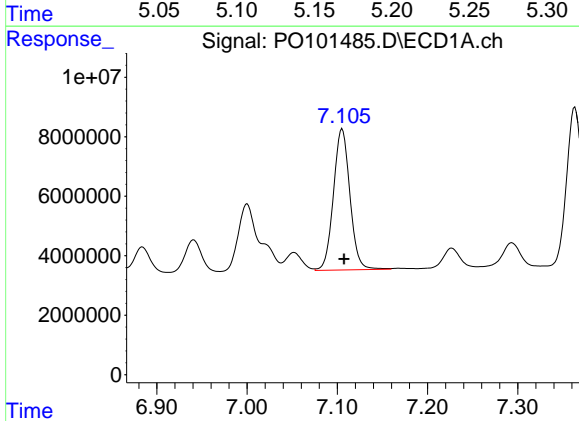
R.T.: 5.976 min
 Delta R.T.: -0.003 min
 Response: 35390542
 Conc: 447.72 ng/ml

Instrument :
 ECD_O
 ClientSampleId :
 PB158725BS



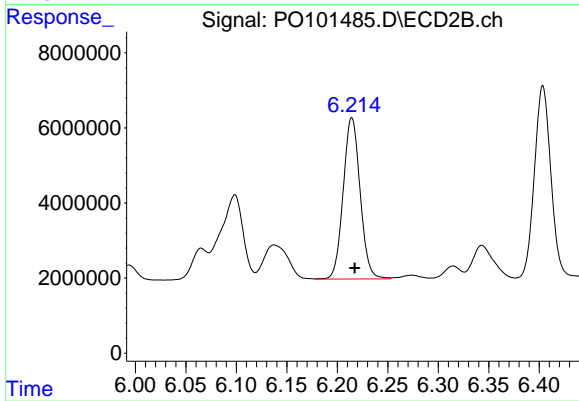
#7 AR-1016-5

R.T.: 5.175 min
 Delta R.T.: -0.002 min
 Response: 26592995
 Conc: 407.33 ng/ml



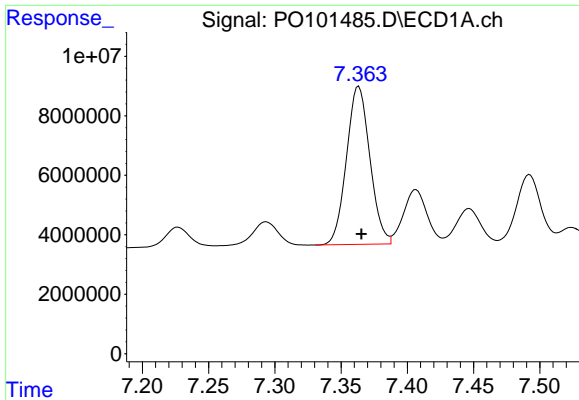
#31 AR-1260-1

R.T.: 7.105 min
 Delta R.T.: -0.002 min
 Response: 60191599
 Conc: 422.06 ng/ml



#31 AR-1260-1

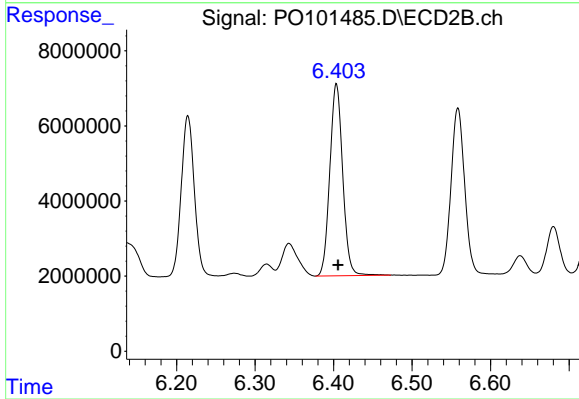
R.T.: 6.214 min
 Delta R.T.: -0.003 min
 Response: 50186371
 Conc: 406.72 ng/ml



#32 AR-1260-2

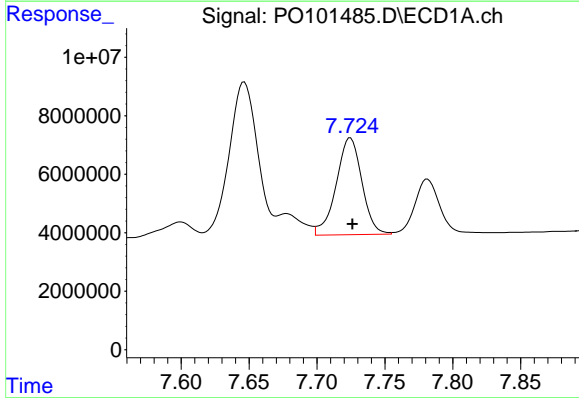
R.T.: 7.363 min
 Delta R.T.: -0.002 min
 Response: 65337914
 Conc: 446.04 ng/ml

Instrument :
 ECD_O
 ClientSampleId :
 PB158725BS



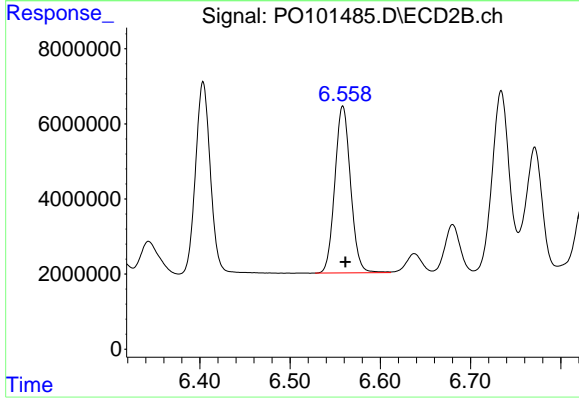
#32 AR-1260-2

R.T.: 6.404 min
 Delta R.T.: -0.002 min
 Response: 58342640
 Conc: 426.70 ng/ml



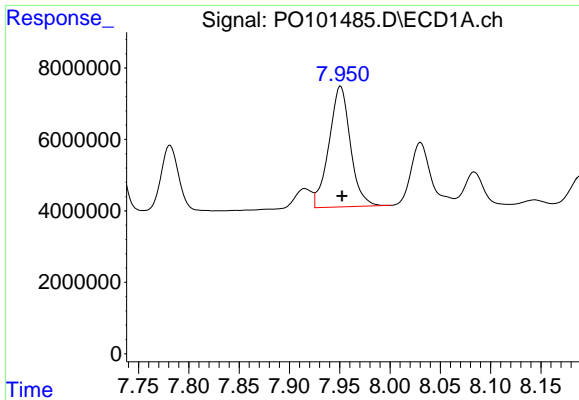
#33 AR-1260-3

R.T.: 7.725 min
 Delta R.T.: -0.001 min
 Response: 43745175
 Conc: 374.64 ng/ml



#33 AR-1260-3

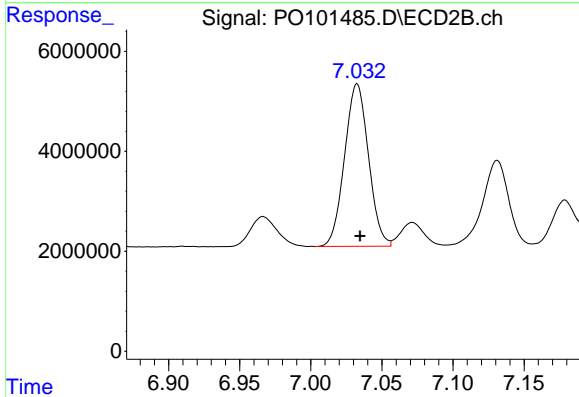
R.T.: 6.558 min
 Delta R.T.: -0.003 min
 Response: 53773711
 Conc: 419.18 ng/ml



#34 AR-1260-4

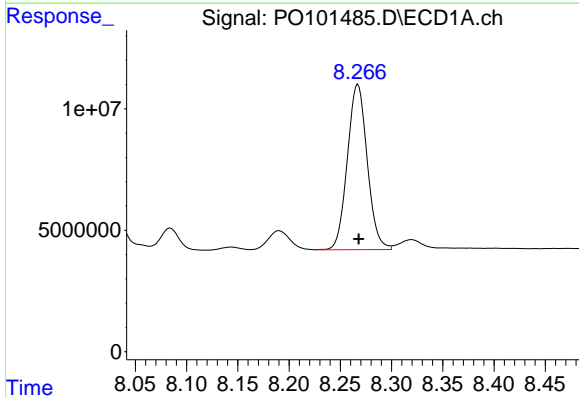
R.T.: 7.951 min
 Delta R.T.: -0.001 min
 Response: 50393819
 Conc: 428.05 ng/ml

Instrument :
 ECD_O
 ClientSampleId :
 PB158725BS



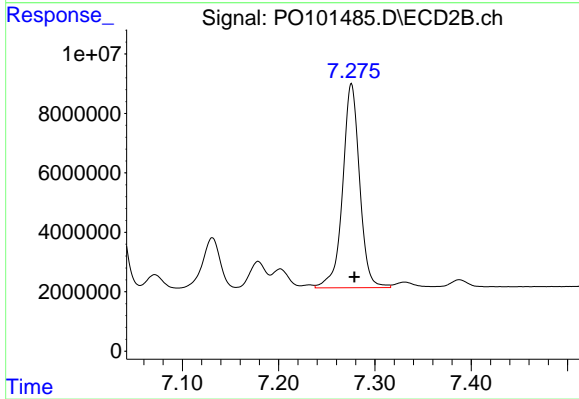
#34 AR-1260-4

R.T.: 7.033 min
 Delta R.T.: -0.002 min
 Response: 38116850
 Conc: 368.81 ng/ml



#35 AR-1260-5

R.T.: 8.267 min
 Delta R.T.: 0.000 min
 Response: 91960350
 Conc: 419.36 ng/ml



#35 AR-1260-5

R.T.: 7.276 min
 Delta R.T.: -0.003 min
 Response: 83492468
 Conc: 397.75 ng/ml