

Data Path : Z:\pestpcbsrv\HPCHEM1\ECD_0\Data\P0013124\
 Data File : P0101490.D
 Signal(s) : Signal #1: ECD1A.ch Signal #2: ECD2B.ch
 Acq On : 31 Jan 2024 16:49
 Operator : YP/AJ
 Sample : P1297-01MS
 Misc :
 ALS Vial : 13 Sample Multiplier: 1

Instrument :
 ECD_0
ClientSampleId :
 TR-05-013024MS

Manual Integrations
APPROVED

Reviewed By :Ankita Jodhani 02/01/2024
 Supervised By :Sohil Jodhani 02/01/2024

Integration File signal 1: autoint1.e
 Integration File signal 2: autoint2.e
 Quant Time: Feb 01 02:10:22 2024
 Quant Method : Z:\pestpcbsrv\HPCHEM1\ECD_0\methods\P0012424.M
 Quant Title : GC EXTRACTABLES
 QLast Update : Wed Jan 24 04:51:39 2024
 Response via : Initial Calibration
 Integrator: ChemStation

Volume Inj. : 2 µl
 Signal #1 Phase : ZB-MR2 Signal #2 Phase: ZB-MR2
 Signal #1 Info : 30Mx0.32mmx 0.50µ Signal #2 Info : 30M x 0.32mm x 0.25µm

Compound	RT#1	RT#2	Resp#1	Resp#2	ng/ml	ng/ml

System Monitoring Compounds						
1) SA Tetrachlo...	4.329	3.629	82407396	47961509	21.468	18.559
2) SA Decachlor...	10.054	8.672	44103103	30439464	18.927	16.063
Target Compounds						
3) L1 AR-1016-1	5.496	4.720	52239607	34932831	534.401m	472.530
4) L1 AR-1016-2	5.518	4.739	75115758	50457712	546.075m	511.935
5) L1 AR-1016-3	5.580	4.916	51338708	21598696	572.282m	393.695 #
6) L1 AR-1016-4	5.678	4.959	41489952	25494847	580.505m	501.686
7) L1 AR-1016-5	5.974	5.174	40497035	27249628	512.325	417.389
31) L7 AR-1260-1	7.105	6.214	66116166	53197825	463.606	431.120
32) L7 AR-1260-2	7.362	6.404	71980681	59009052	491.391	431.569
33) L7 AR-1260-3	7.723	6.559	45559564	53142216	390.177	414.253
34) L7 AR-1260-4	7.949	7.033	54721479	36183875	464.811	350.110
35) L7 AR-1260-5	8.266	7.276	98168085	82519728	447.666	393.121

(f)=RT Delta > 1/2 Window (#)=Amounts differ by > 25% (m)=manual int.

Data Path : Z:\pestpcbsrv\HPCHEM1\ECD_O\Data\PO013124\
 Data File : PO101490.D
 Signal(s) : Signal #1: ECD1A.ch Signal #2: ECD2B.ch
 Acq On : 31 Jan 2024 16:49
 Operator : YP/AJ
 Sample : P1297-01MS
 Misc :
 ALS Vial : 13 Sample Multiplier: 1

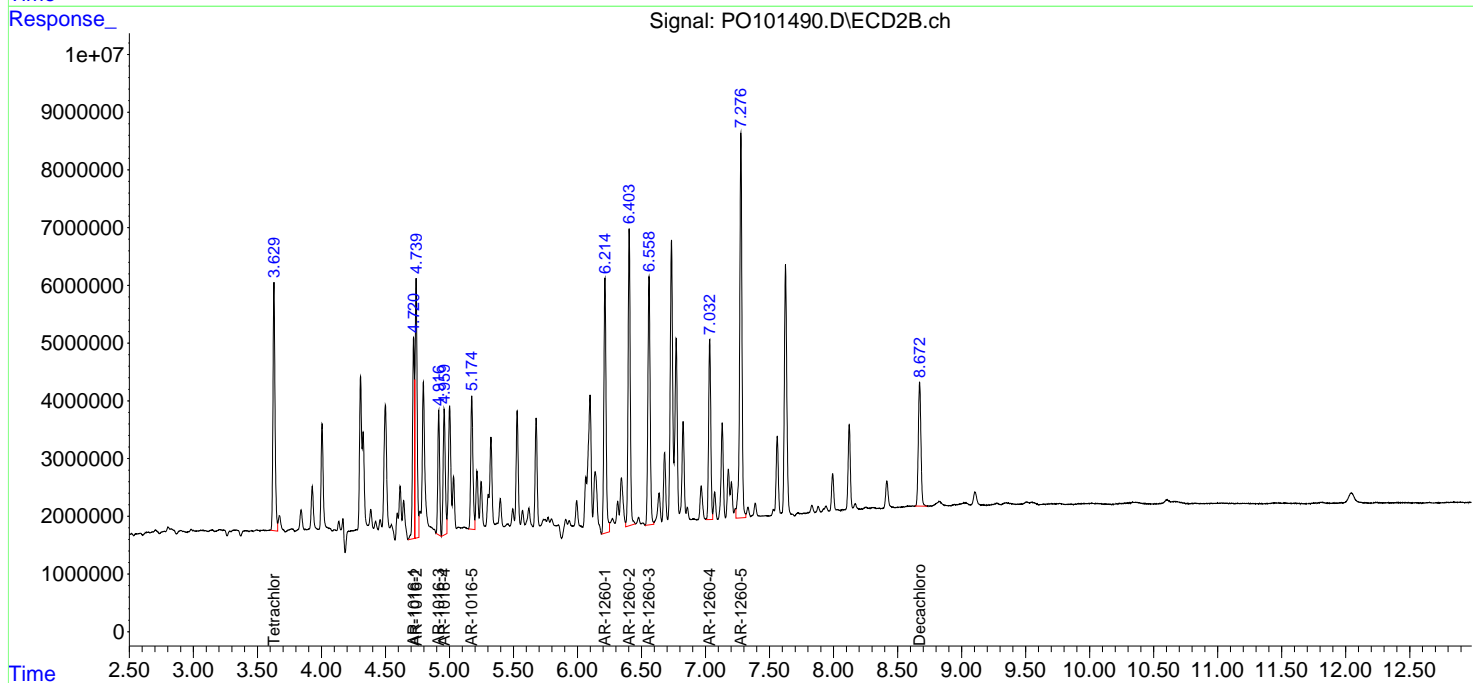
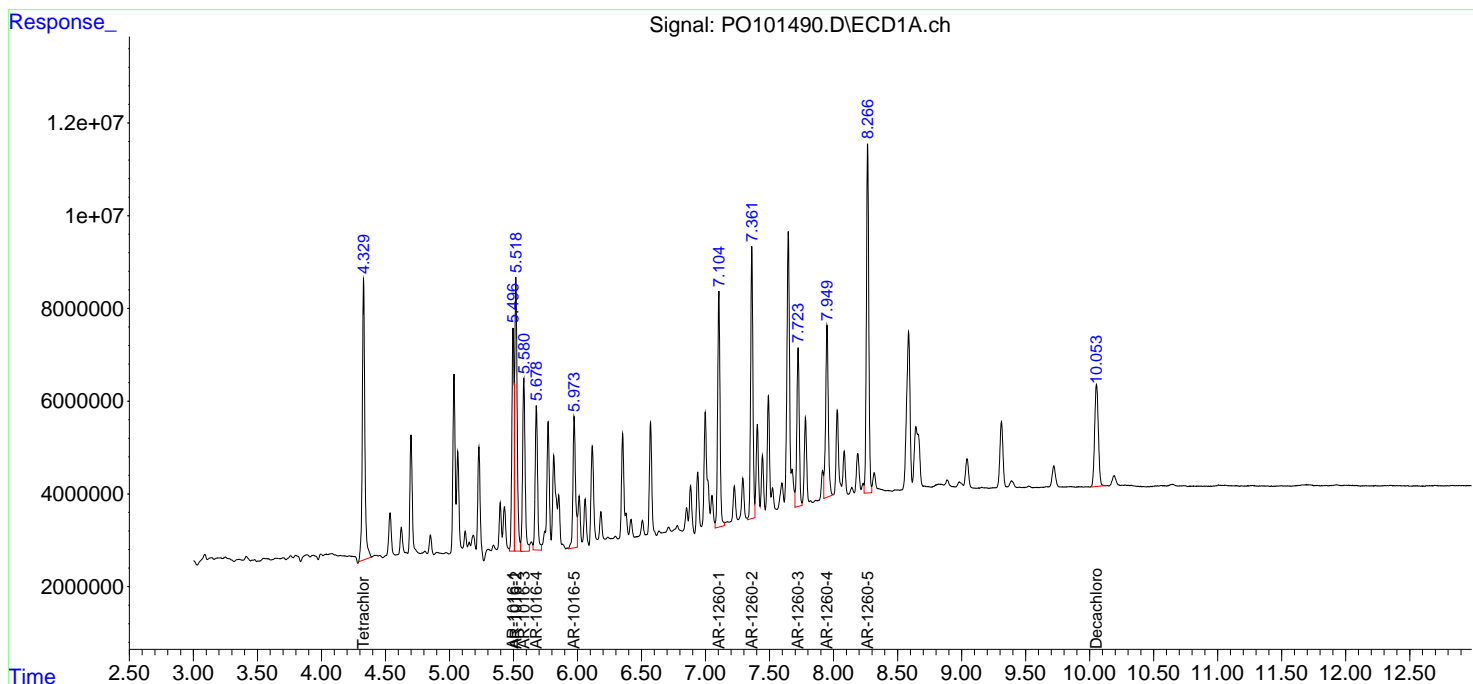
Instrument :
 ECD_O
 ClientSampleId :
 TR-05-013024MS

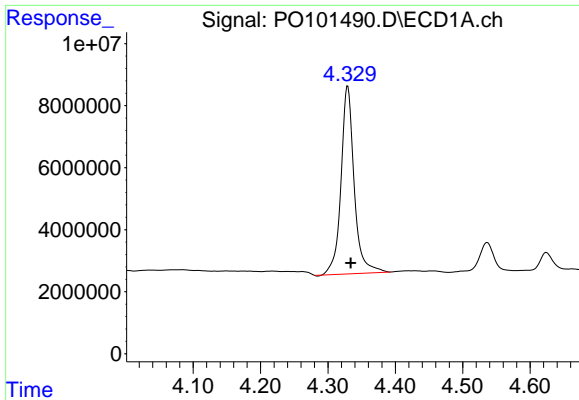
Manual Integrations
APPROVED

Reviewed By :Ankita Jodhani 02/01/2024
 Supervised By :Sohil Jodhani 02/01/2024

Integration File signal 1: autoint1.e
 Integration File signal 2: autoint2.e
 Quant Time: Feb 01 02:10:22 2024
 Quant Method : Z:\pestpcbsrv\HPCHEM1\ECD_O\methods\PO012424.M
 Quant Title : GC EXTRACTABLES
 QLast Update : Wed Jan 24 04:51:39 2024
 Response via : Initial Calibration
 Integrator: ChemStation

Volume Inj. : 2 µl
 Signal #1 Phase : ZB-MR1 Signal #2 Phase: ZB-MR2
 Signal #1 Info : 30Mx0.32mmx 0.50µ Signal #2 Info : 30M x 0.32mm x 0.25µm



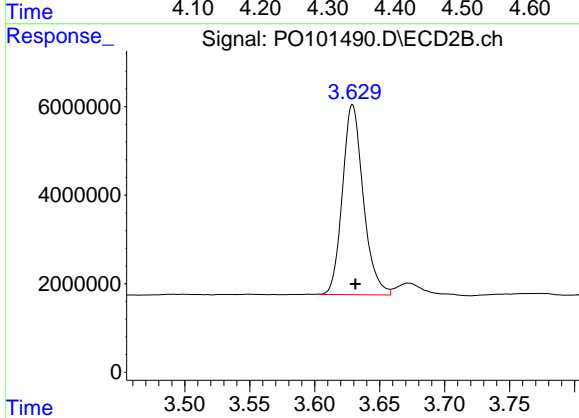


#1 Tetrachloro-m-xylene
 R.T.: 4.329 min
 Delta R.T.: -0.005 min
 Response: 82407396
 Conc: 21.47 ng/ml

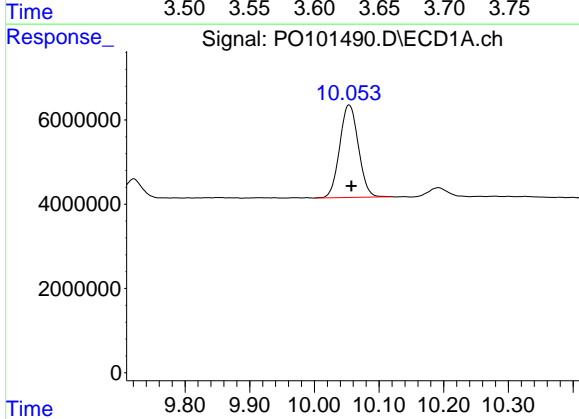
Instrument :
 ECD_O
 ClientSampleId :
 TR-05-013024MS

Manual Integrations
 APPROVED

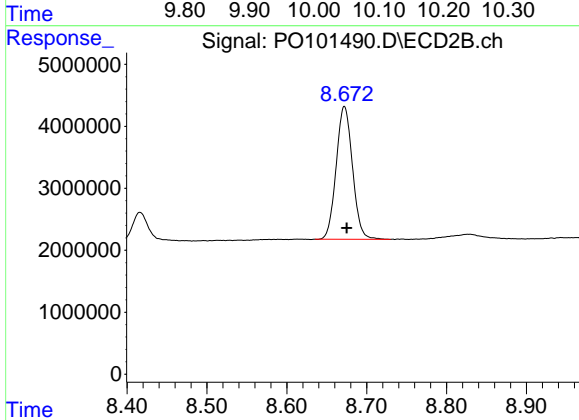
Reviewed By :Ankita Jodhani 02/01/2024
 Supervised By :Sohil Jodhani 02/01/2024



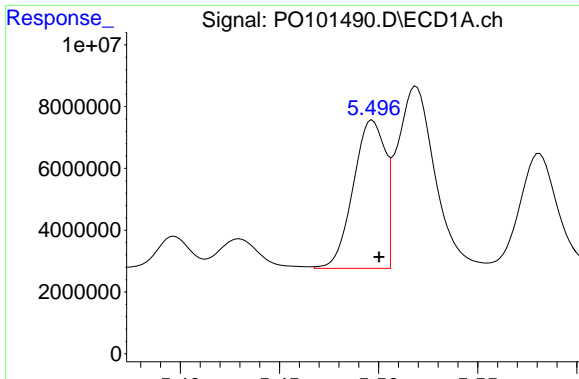
#1 Tetrachloro-m-xylene
 R.T.: 3.629 min
 Delta R.T.: -0.002 min
 Response: 47961509
 Conc: 18.56 ng/ml



#2 Decachlorobiphenyl
 R.T.: 10.054 min
 Delta R.T.: -0.004 min
 Response: 44103103
 Conc: 18.93 ng/ml



#2 Decachlorobiphenyl
 R.T.: 8.672 min
 Delta R.T.: -0.003 min
 Response: 30439464
 Conc: 16.06 ng/ml



#3 AR-1016-1

R.T.: 5.496 min
 Delta R.T.: -0.004 min
 Response: 52239607
 Conc: 534.40 ng/ml

Instrument :

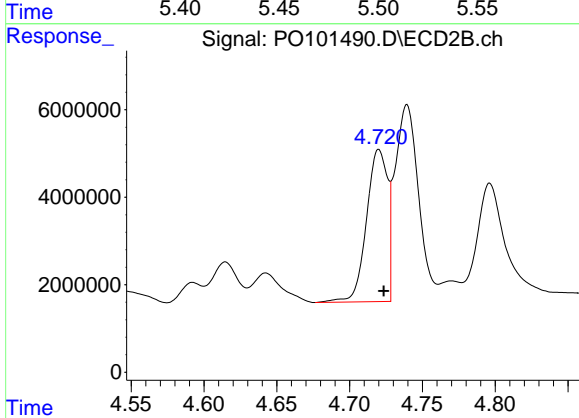
ECD_O

ClientSampleId :

TR-05-013024MS

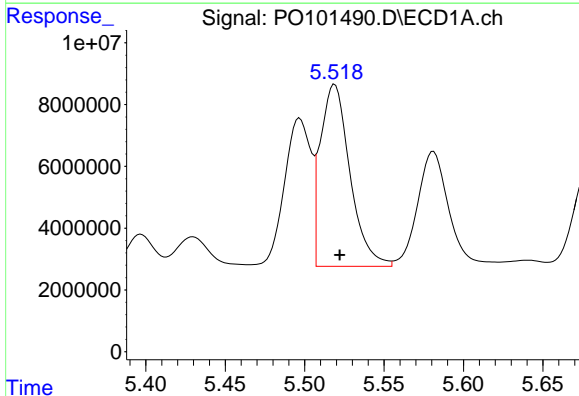
Manual Integrations
APPROVED

Reviewed By :Ankita Jodhani 02/01/2024
 Supervised By :Sohil Jodhani 02/01/2024



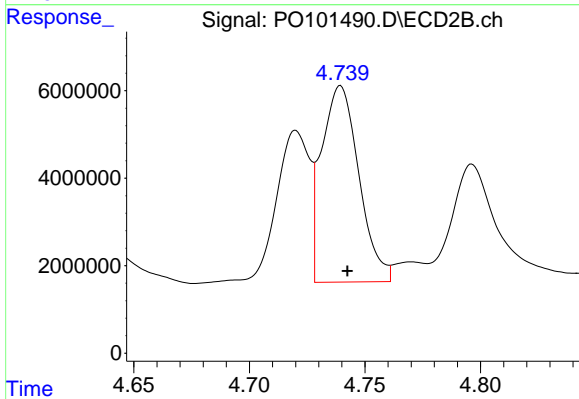
#3 AR-1016-1

R.T.: 4.720 min
 Delta R.T.: -0.003 min
 Response: 34932831
 Conc: 472.53 ng/ml



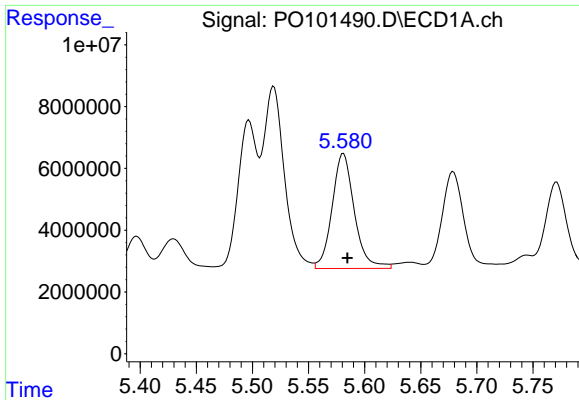
#4 AR-1016-2

R.T.: 5.518 min
 Delta R.T.: -0.004 min
 Response: 75115758
 Conc: 546.07 ng/ml m



#4 AR-1016-2

R.T.: 4.739 min
 Delta R.T.: -0.003 min
 Response: 50457712
 Conc: 511.94 ng/ml



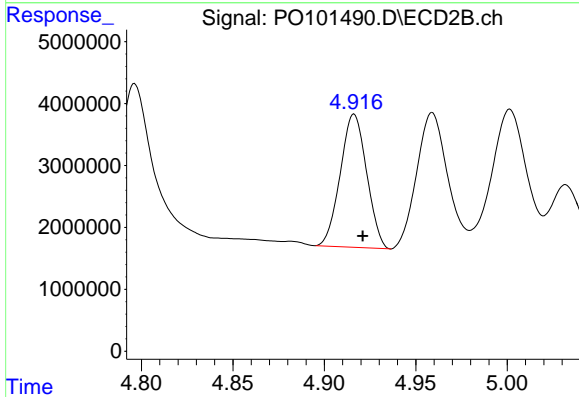
#5 AR-1016-3

R.T.: 5.580 min
 Delta R.T.: -0.004 min
 Response: 51338708
 Conc: 572.28 ng/ml

Instrument :
 ECD_O
 ClientSampleId :
 TR-05-013024MS

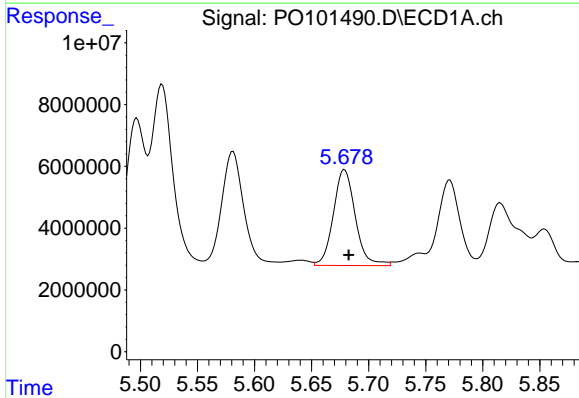
Manual Integrations
 APPROVED

Reviewed By :Ankita Jodhani 02/01/2024
 Supervised By :Sohil Jodhani 02/01/2024



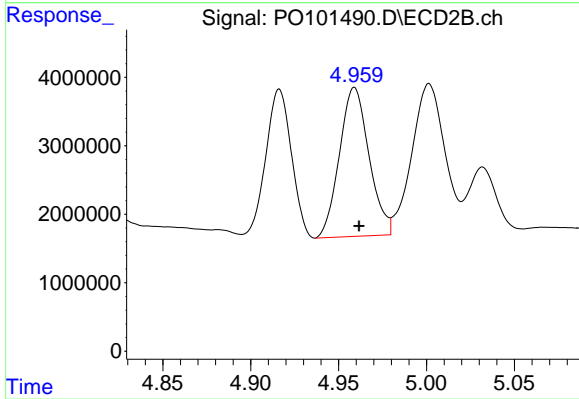
#5 AR-1016-3

R.T.: 4.916 min
 Delta R.T.: -0.005 min
 Response: 21598696
 Conc: 393.70 ng/ml



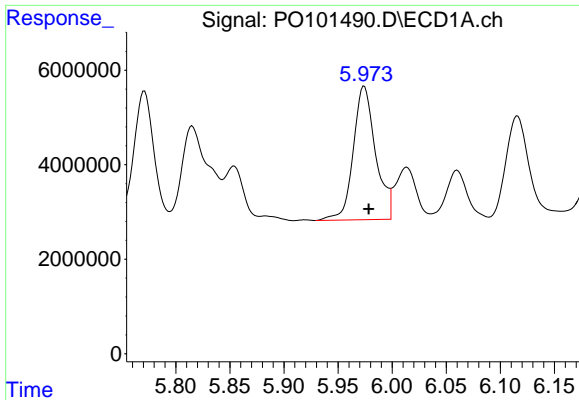
#6 AR-1016-4

R.T.: 5.678 min
 Delta R.T.: -0.005 min
 Response: 41489952
 Conc: 580.51 ng/ml m



#6 AR-1016-4

R.T.: 4.959 min
 Delta R.T.: -0.003 min
 Response: 25494847
 Conc: 501.69 ng/ml



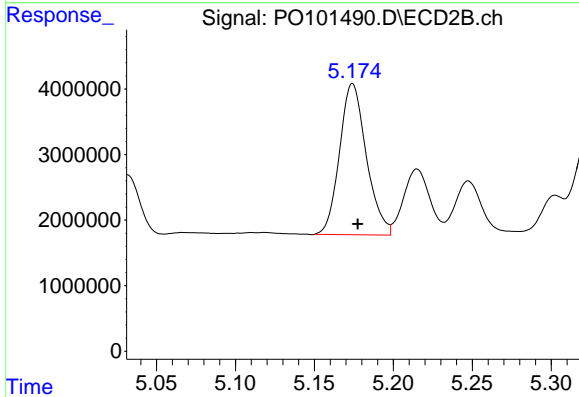
#7 AR-1016-5

R.T.: 5.974 min
 Delta R.T.: -0.004 min
 Response: 40497035
 Conc: 512.32 ng/ml

Instrument :
 ECD_O
 ClientSampleId :
 TR-05-013024MS

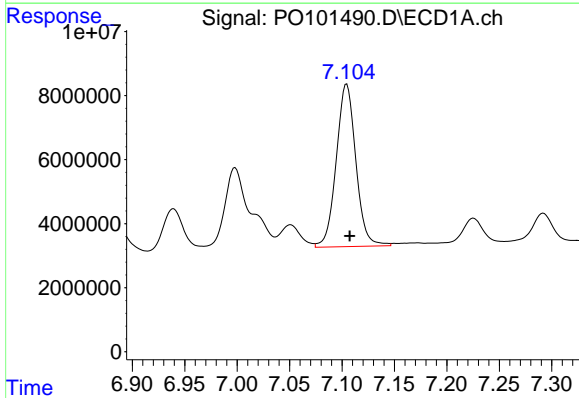
Manual Integrations
 APPROVED

Reviewed By :Ankita Jodhani 02/01/2024
 Supervised By :Sohil Jodhani 02/01/2024



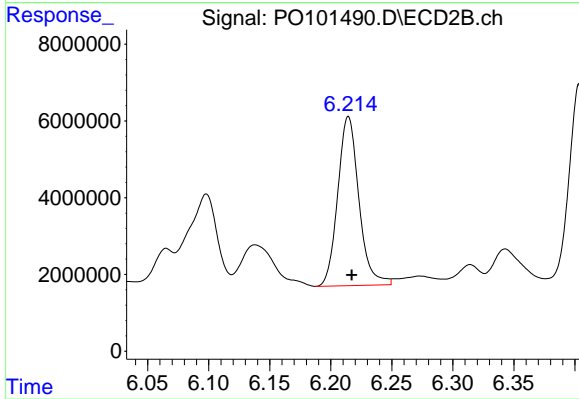
#7 AR-1016-5

R.T.: 5.174 min
 Delta R.T.: -0.003 min
 Response: 27249628
 Conc: 417.39 ng/ml



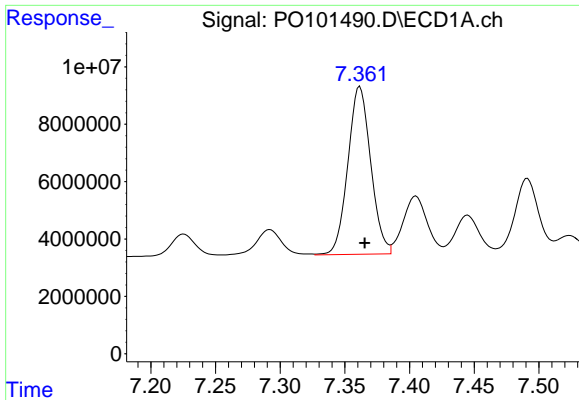
#31 AR-1260-1

R.T.: 7.105 min
 Delta R.T.: -0.003 min
 Response: 66116166
 Conc: 463.61 ng/ml



#31 AR-1260-1

R.T.: 6.214 min
 Delta R.T.: -0.003 min
 Response: 53197825
 Conc: 431.12 ng/ml



#32 AR-1260-2

R.T.: 7.362 min
 Delta R.T.: -0.004 min
 Response: 71980681
 Conc: 491.39 ng/ml

Instrument :

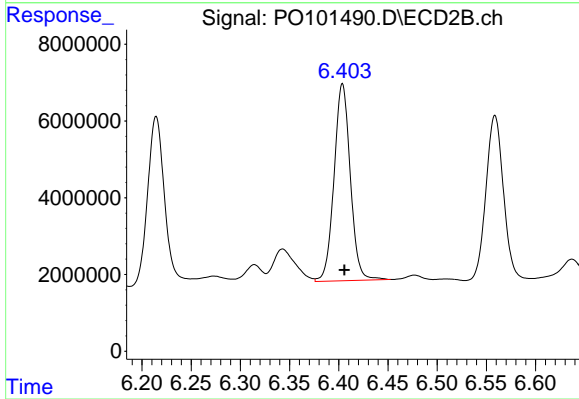
ECD_O

ClientSampleId :

TR-05-013024MS

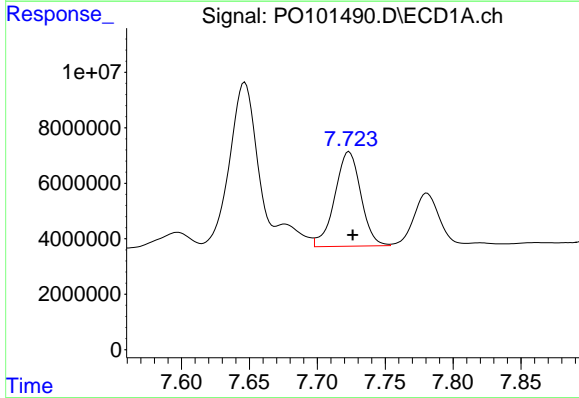
Manual Integrations
 APPROVED

Reviewed By :Ankita Jodhani 02/01/2024
 Supervised By :Sohil Jodhani 02/01/2024



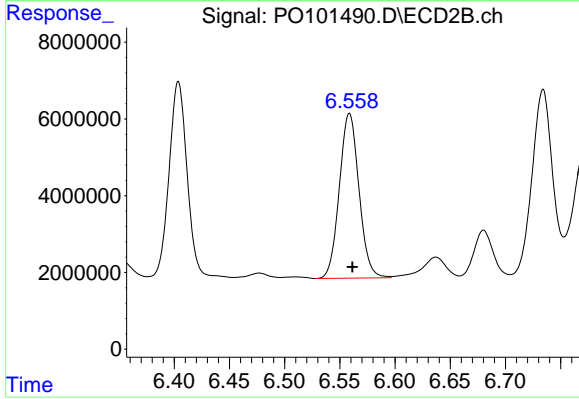
#32 AR-1260-2

R.T.: 6.404 min
 Delta R.T.: -0.002 min
 Response: 59009052
 Conc: 431.57 ng/ml



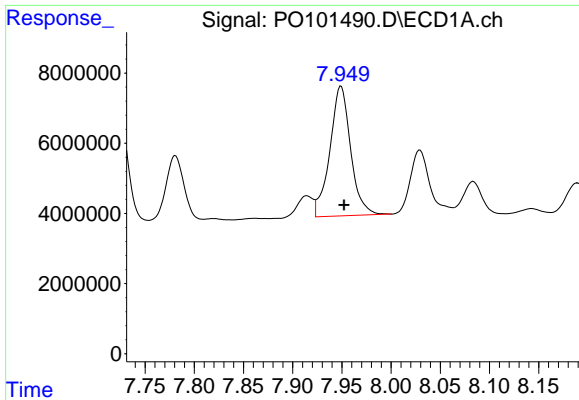
#33 AR-1260-3

R.T.: 7.723 min
 Delta R.T.: -0.003 min
 Response: 45559564
 Conc: 390.18 ng/ml



#33 AR-1260-3

R.T.: 6.559 min
 Delta R.T.: -0.003 min
 Response: 53142216
 Conc: 414.25 ng/ml



#34 AR-1260-4

R.T.: 7.949 min
 Delta R.T.: -0.003 min
 Response: 54721479
 Conc: 464.81 ng/ml

Instrument :

ECD_O

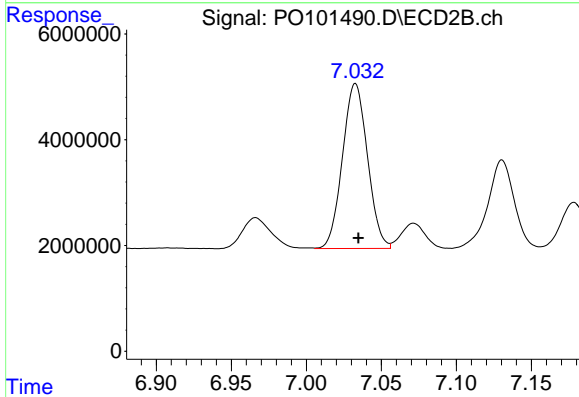
ClientSampleId :

TR-05-013024MS

Manual Integrations

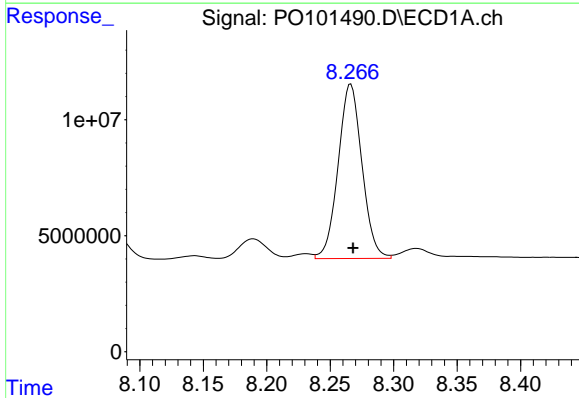
APPROVED

Reviewed By :Ankita Jodhani 02/01/2024
 Supervised By :Sohil Jodhani 02/01/2024



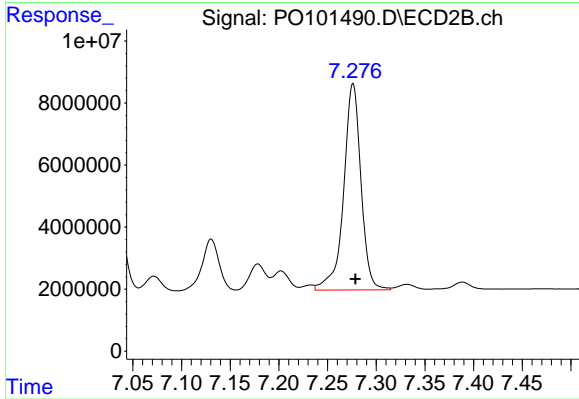
#34 AR-1260-4

R.T.: 7.033 min
 Delta R.T.: -0.002 min
 Response: 36183875
 Conc: 350.11 ng/ml



#35 AR-1260-5

R.T.: 8.266 min
 Delta R.T.: -0.002 min
 Response: 98168085
 Conc: 447.67 ng/ml



#35 AR-1260-5

R.T.: 7.276 min
 Delta R.T.: -0.002 min
 Response: 82519728
 Conc: 393.12 ng/ml