

Data Path : Z:\pestpcbsrv\HPCHEM1\ECD_0\Data\P0020320\
 Data File : P0066202.D
 Signal(s) : Signal #1: ECD1A.CH Signal #2: ECD2B.CH
 Acq On : 03 Feb 2020 13:34
 Operator : DD\AJ
 Sample : PB126497BL
 Misc :
 ALS Vial : 10 Sample Multiplier: 1

Instrument :
 ECD_0
 ClientSampleId :
 PB126497BL

Integration File signal 1: autoint1.e
 Integration File signal 2: autoint2.e
 Quant Time: Feb 03 16:43:22 2020
 Quant Method : Z:\pestpcbsrv\HPCHEM1\ECD_0\methods\P0013020.M
 Quant Title : GC EXTRACTABLES
 QLast Update : Fri Jan 31 01:14:46 2020
 Response via : Initial Calibration
 Integrator: ChemStation 6890 Scale Mode: Small noise peaks clipped

Volume Inj. : 2 µl
 Signal #1 Phase : ZB-MR1 Signal #2 Phase: ZB-MR2
 Signal #1 Info : 30Mx0.32mmx 0.50µ Signal #2 Info : 30M x 0.32mm x 0.25µm

Compound	RT#1	RT#2	Resp#1	Resp#2	ng/ml	ng/ml

System Monitoring Compounds						
1) SA Tetrachlo...	4.159	3.427	646475	891132	22.192	21.786
2) SA Decachlor...	9.653	8.327	929464	1337972	23.586	22.828

Target Compounds

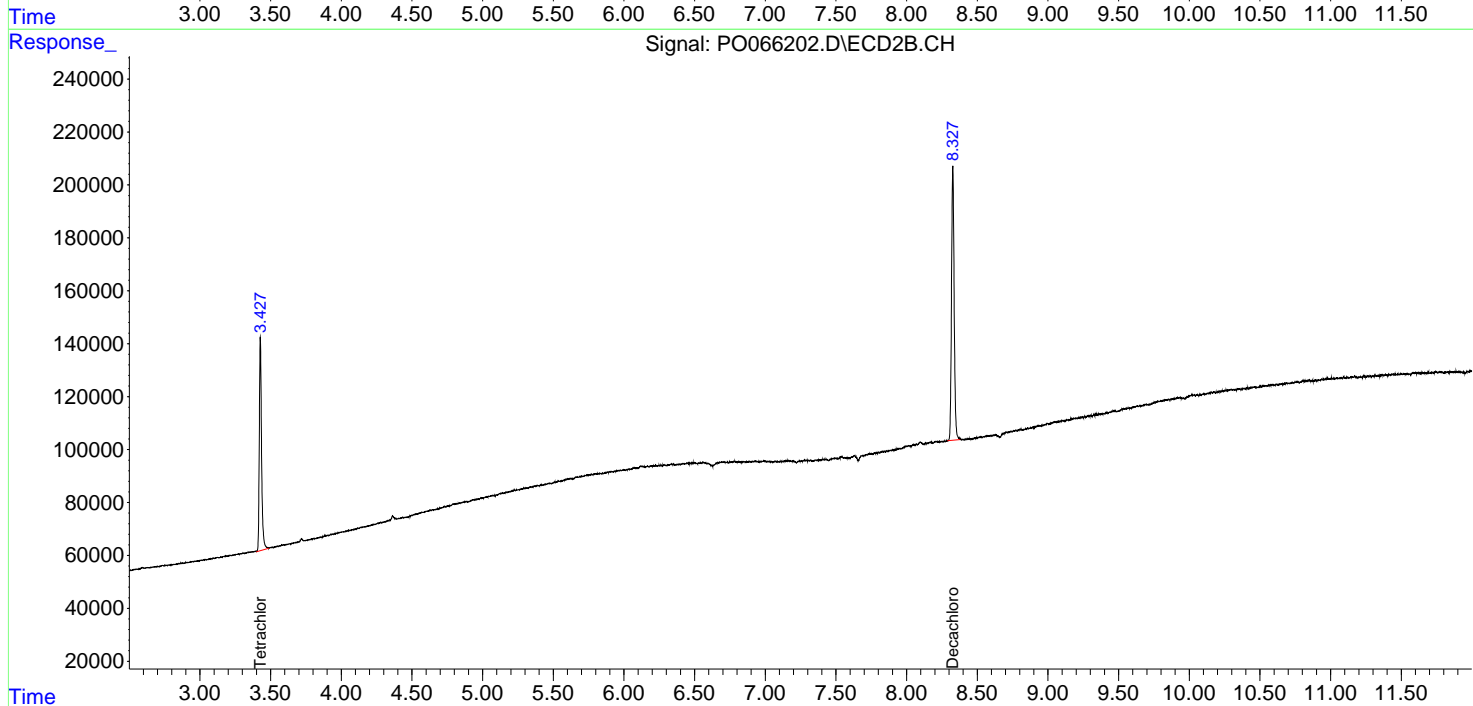
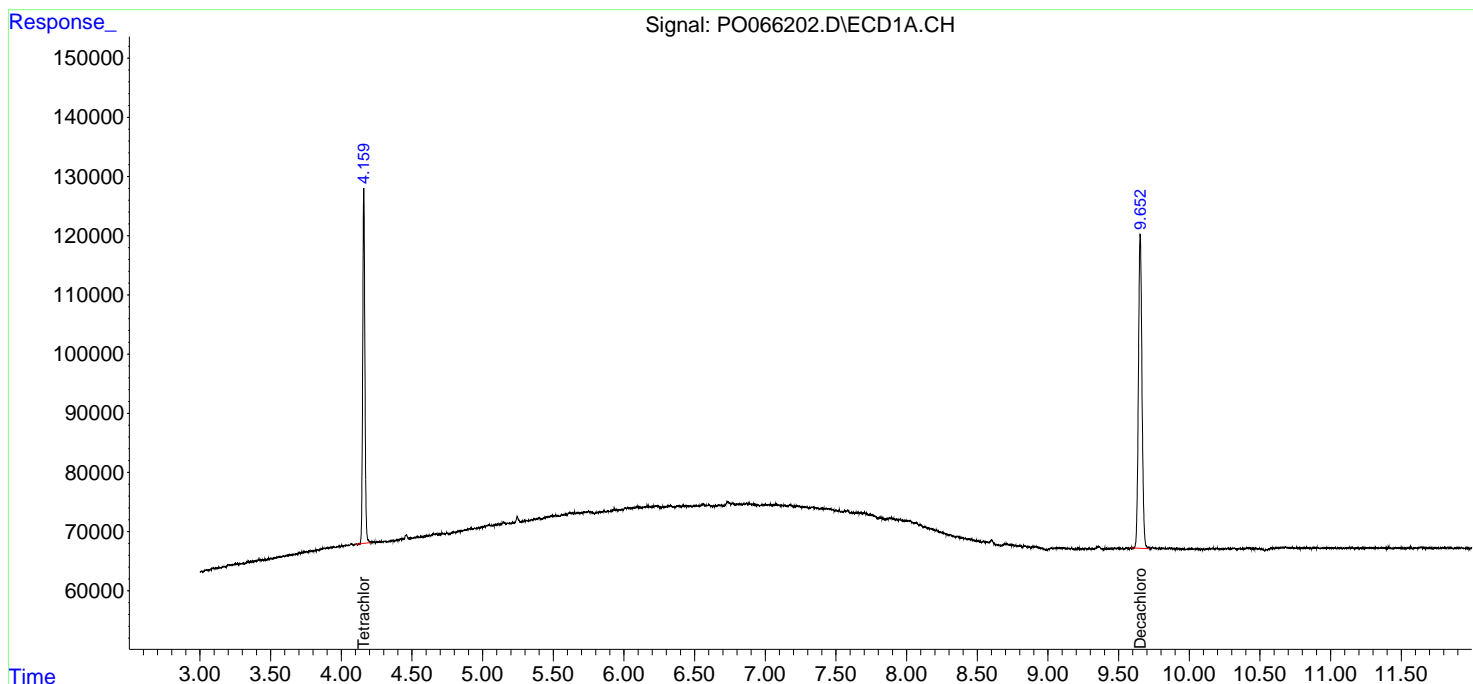
(f)=RT Delta > 1/2 Window (#)=Amounts differ by > 25% (m)=manual int.

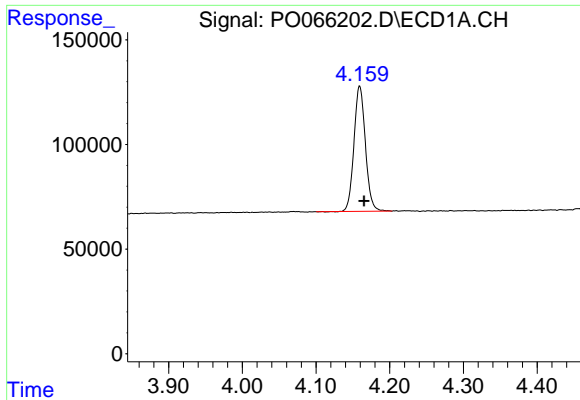
Data Path : Z:\pestpcbsrv\HPCHEM1\ECD_O\Data\P0020320\
 Data File : P0066202.D
 Signal(s) : Signal #1: ECD1A.CH Signal #2: ECD2B.CH
 Acq On : 03 Feb 2020 13:34
 Operator : DD\AJ
 Sample : PB126497BL
 Misc :
 ALS Vial : 10 Sample Multiplier: 1

Instrument :
 ECD_O
 ClientSampleId :
 PB126497BL

Integration File signal 1: autoint1.e
 Integration File signal 2: autoint2.e
 Quant Time: Feb 03 16:43:22 2020
 Quant Method : Z:\pestpcbsrv\HPCHEM1\ECD_O\methods\P0013020.M
 Quant Title : GC EXTRACTABLES
 QLast Update : Fri Jan 31 01:14:46 2020
 Response via : Initial Calibration
 Integrator: ChemStation 6890 Scale Mode: Small noise peaks clipped

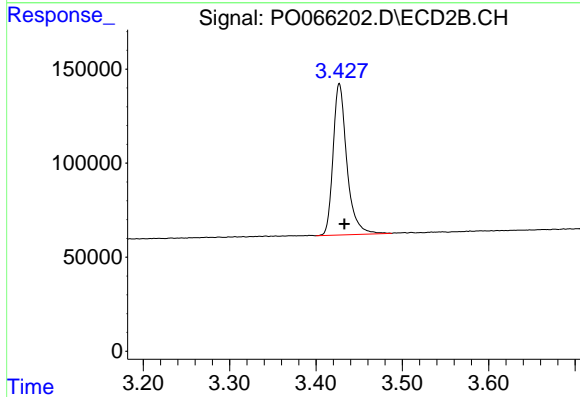
Volume Inj. : 2 µl
 Signal #1 Phase : ZB-MR1 Signal #2 Phase: ZB-MR2
 Signal #1 Info : 30Mx0.32mmx 0.50µ Signal #2 Info : 30M x 0.32mm x 0.25µm



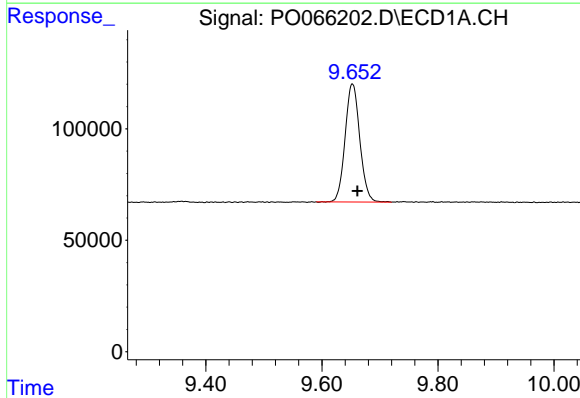


#1 Tetrachloro-m-xylene
 R.T.: 4.159 min
 Delta R.T.: -0.006 min
 Response: 646475
 Conc: 22.19 ng/ml

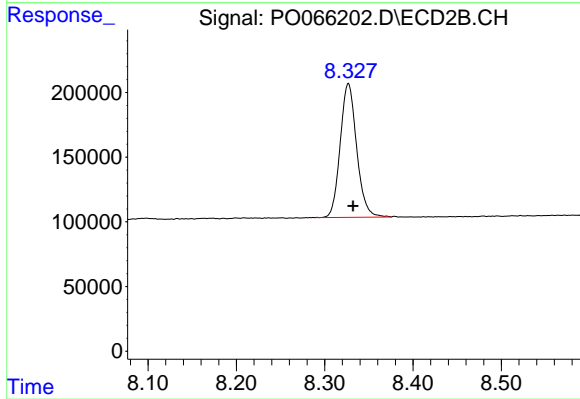
Instrument :
 ECD_O
 ClientSampleId :
 PB126497BL



#1 Tetrachloro-m-xylene
 R.T.: 3.427 min
 Delta R.T.: -0.006 min
 Response: 891132
 Conc: 21.79 ng/ml



#2 Decachlorobiphenyl
 R.T.: 9.653 min
 Delta R.T.: -0.009 min
 Response: 929464
 Conc: 23.59 ng/ml



#2 Decachlorobiphenyl
 R.T.: 8.327 min
 Delta R.T.: -0.005 min
 Response: 1337972
 Conc: 22.83 ng/ml