

Data Path : Z:\pestpcbsrv\HPCHEM1\ECD_0\Data\P0020321\
 Data File : P0075474.D
 Signal(s) : Signal #1: ECD1A.CH Signal #2: ECD2B.CH
 Acq On : 04 Feb 2021 2:16
 Operator : AJ/MA
 Sample : AR1262CCC500
 Misc :
 ALS Vial : 5 Sample Multiplier: 1

Instrument :
 ECD_0
ClientSampleId :
 AR1262CCC500

Manual Integrations
APPROVED
 Ankita
 2/4/2021 1:51:57 PM

Integration File signal 1: autoint1.e
 Integration File signal 2: autoint2.e
 Quant Time: Feb 04 03:27:47 2021
 Quant Method : Z:\pestpcbsrv\HPCHEM1\ECD_0\methods\P0012821.M
 Quant Title : GC EXTRACTABLES
 QLast Update : Fri Jan 29 09:09:46 2021
 Response via : Initial Calibration
 Integrator: ChemStation 6890 Scale Mode: Small noise peaks clipped

Volume Inj. : 2 µl
 Signal #1 Phase : ZB-MR1 Signal #2 Phase: ZB-MR2
 Signal #1 Info : 30Mx0.32mmx 0.50µ Signal #2 Info : 30M x 0.32mm x 0.25µm

Compound	RT#1	RT#2	Resp#1	Resp#2	ng/ml	ng/ml

System Monitoring Compounds						
1) SA Tetrachlo...	4.922	3.994	5381819	2534196	53.179	52.717
2) SA Decachlor...	10.939	9.244	5133996	2397616	53.212	49.393
Target Compounds						
36) L8 AR-1262-1	8.573	7.339	4181264	1027413	479.146	471.027
37) L8 AR-1262-2	9.130	7.888	7046679	3526049	465.989	459.780
38) L8 AR-1262-3	9.439	8.172	4723353	1477888	452.132	446.583
39) L8 AR-1262-4	9.533	8.236	3508587	2578252	474.702m	449.030
40) L8 AR-1262-5	10.197	8.730	2532904	1226001	488.420	445.681

(f)=RT Delta > 1/2 Window (#)=Amounts differ by > 25% (m)=manual int.

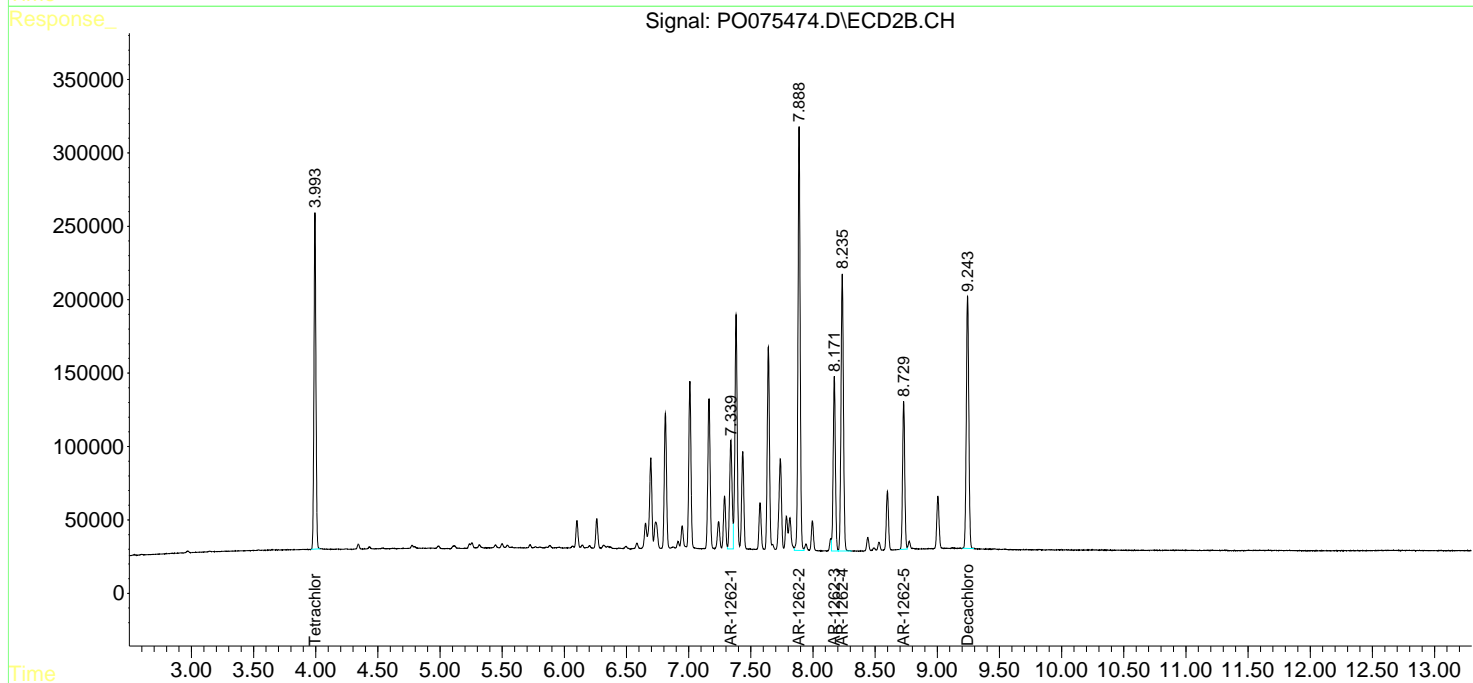
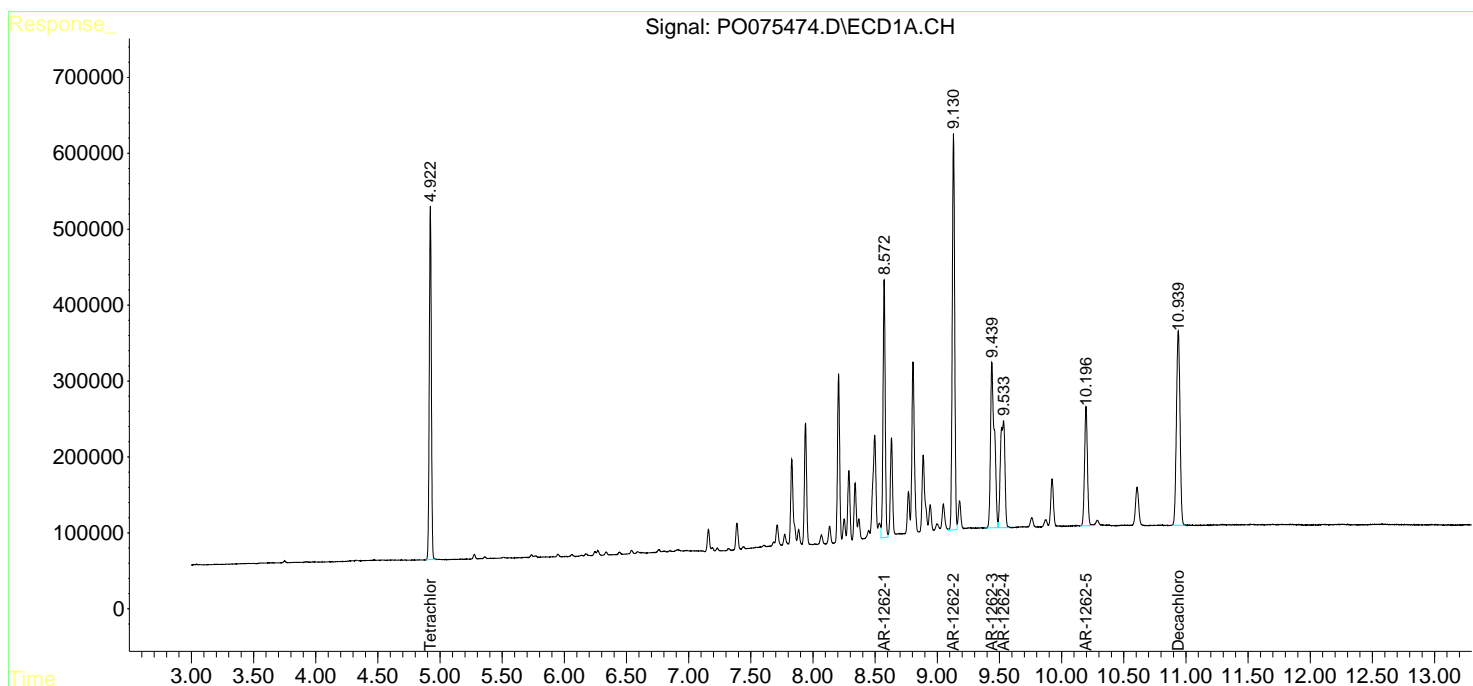
Data Path : Z:\pestpcbsrv\HPCHEM1\ECD_0\Data\PO020321\
 Data File : PO075474.D
 Signal(s) : Signal #1: ECD1A.CH Signal #2: ECD2B.CH
 Acq On : 04 Feb 2021 2:16
 Operator : AJ/MA
 Sample : AR1262CCC500
 Misc :
 ALS Vial : 5 Sample Multiplier: 1

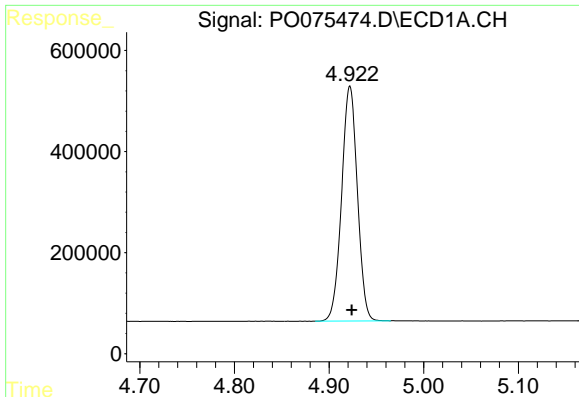
Instrument :
 ECD_O
Client Sampled :
 AR1262CCC500

Manual Integrations
APPROVED
 Ankita
 2/4/2021 1:51:57 PM

Integration File signal 1: autoint1.e
 Integration File signal 2: autoint2.e
 Quant Time: Feb 04 03:27:47 2021
 Quant Method : Z:\pestpcbsrv\HPCHEM1\ECD_0\methods\PO012821.M
 Quant Title : GC EXTRACTABLES
 QLast Update : Fri Jan 29 09:09:46 2021
 Response via : Initial Calibration
 Integrator: ChemStation 6890 Scale Mode: Small noise peaks clipped

Volume Inj. : 2 µl
 Signal #1 Phase : ZB-MR1 Signal #2 Phase: ZB-MR2
 Signal #1 Info : 30Mx0.32mmx 0.50µ Signal #2 Info : 30M x 0.32mm x 0.25µm



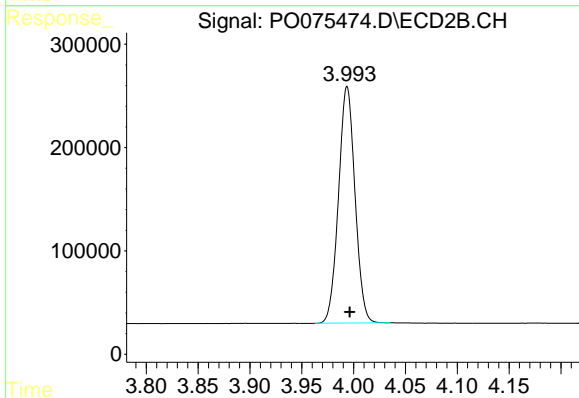


#1 Tetrachloro-m-xylene
 R.T.: 4.922 min
 Delta R.T.: -0.002 min
 Response: 5381819
 Conc: 53.18 ng/ml

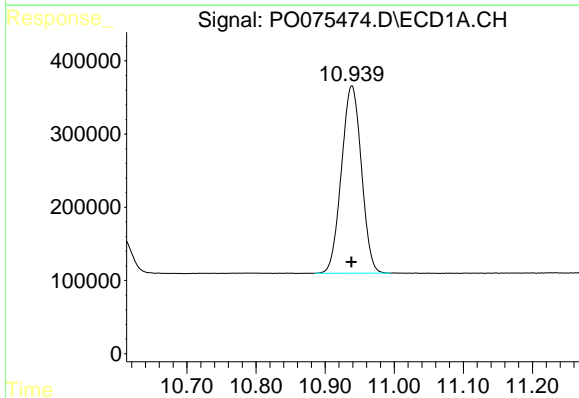
Instrument :
 ECD_O
 ClientSampleId :
 AR1262CCC500

Manual Integrations
 APPROVED

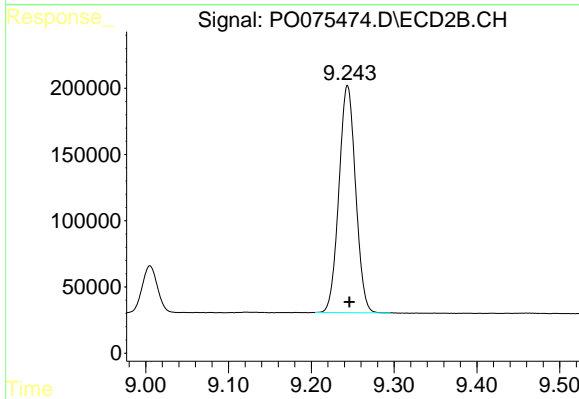
Ankita
 2/4/2021 1:51:57 PM



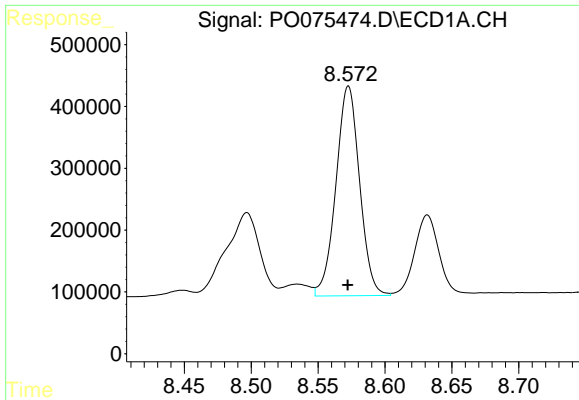
#1 Tetrachloro-m-xylene
 R.T.: 3.994 min
 Delta R.T.: -0.003 min
 Response: 2534196
 Conc: 52.72 ng/ml



#2 Decachlorobiphenyl
 R.T.: 10.939 min
 Delta R.T.: 0.000 min
 Response: 5133996
 Conc: 53.21 ng/ml



#2 Decachlorobiphenyl
 R.T.: 9.244 min
 Delta R.T.: -0.002 min
 Response: 2397616
 Conc: 49.39 ng/ml

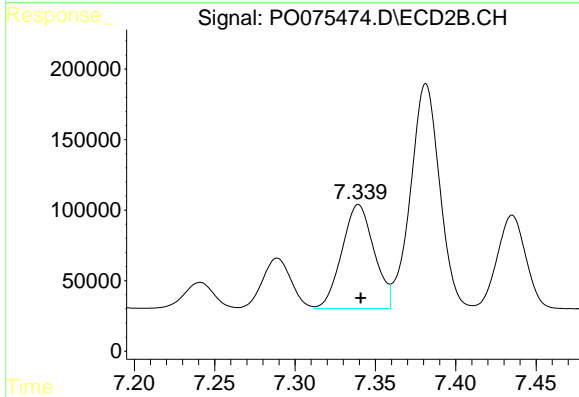


#36 AR-1262-1

R.T.: 8.573 min
 Delta R.T.: 0.000 min
 Response: 4181264
 Conc: 479.15 ng/ml

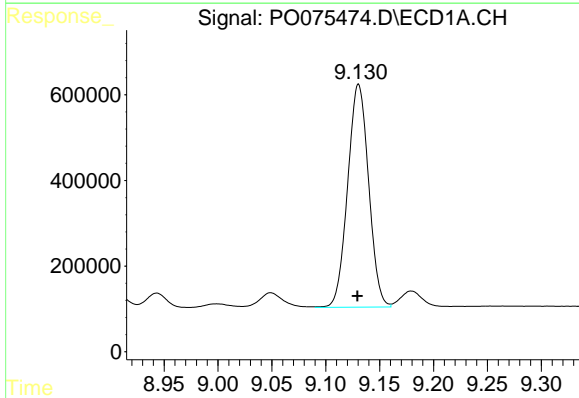
Instrument :
 ECD_O
ClientSampled :
 AR1262CCC500

Manual Integrations
APPROVED
 Ankita
 2/4/2021 1:51:57 PM



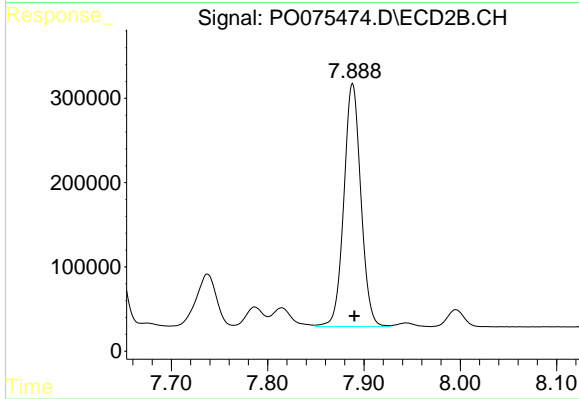
#36 AR-1262-1

R.T.: 7.339 min
 Delta R.T.: -0.002 min
 Response: 1027413
 Conc: 471.03 ng/ml



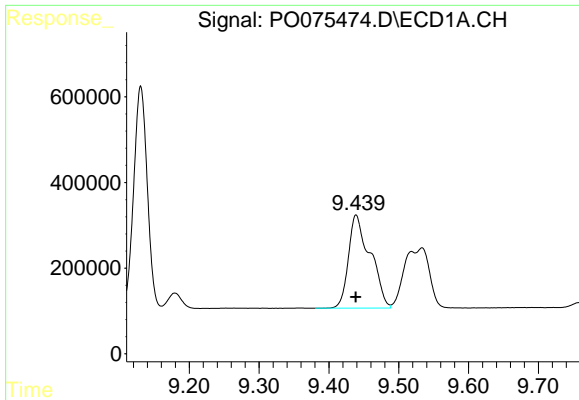
#37 AR-1262-2

R.T.: 9.130 min
 Delta R.T.: 0.001 min
 Response: 7046679
 Conc: 465.99 ng/ml



#37 AR-1262-2

R.T.: 7.888 min
 Delta R.T.: -0.002 min
 Response: 3526049
 Conc: 459.78 ng/ml

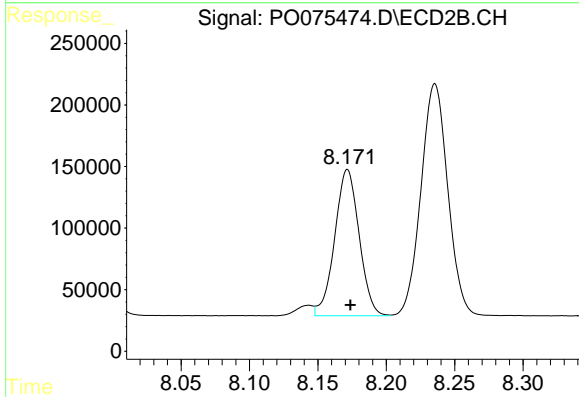


#38 AR-1262-3

R.T.: 9.439 min
 Delta R.T.: 0.000 min
 Response: 4723353
 Conc: 452.13 ng/ml

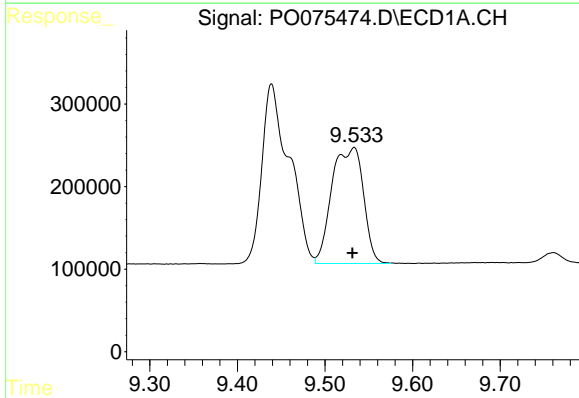
Instrument :
 ECD_O
ClientSampled :
 AR1262CCC500

Manual Integrations
APPROVED
 Ankita
 2/4/2021 1:51:57 PM



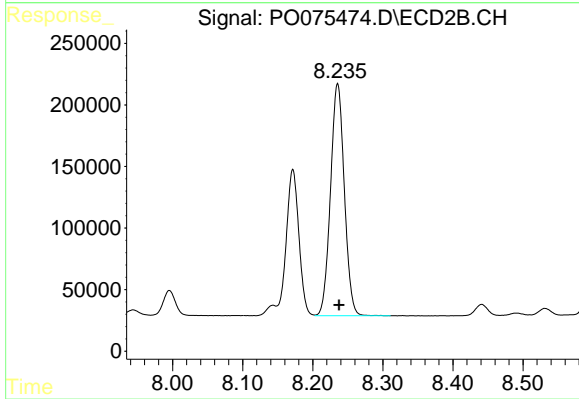
#38 AR-1262-3

R.T.: 8.172 min
 Delta R.T.: -0.002 min
 Response: 1477888
 Conc: 446.58 ng/ml



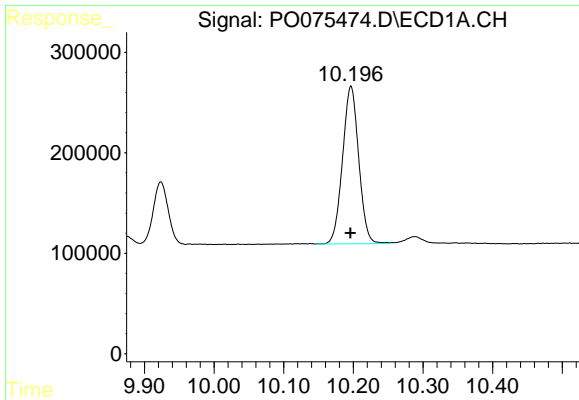
#39 AR-1262-4

R.T.: 9.533 min
 Delta R.T.: 0.002 min
 Response: 3508587
 Conc: 474.70 ng/ml m



#39 AR-1262-4

R.T.: 8.236 min
 Delta R.T.: -0.002 min
 Response: 2578252
 Conc: 449.03 ng/ml



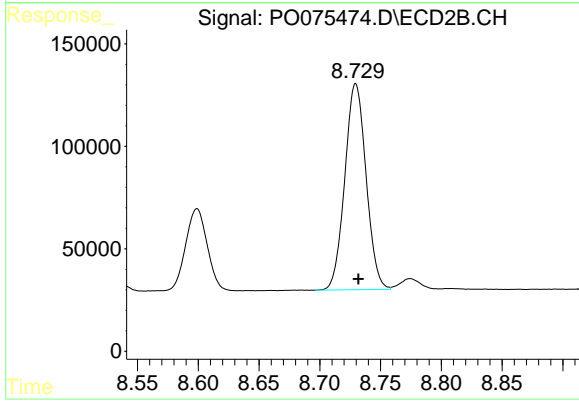
#40 AR-1262-5

R.T.: 10.197 min
Delta R.T.: 0.000 min
Response: 2532904
Conc: 488.42 ng/ml

Instrument :
ECD_O
ClientSampled :
AR1262CCC500

Manual Integrations
APPROVED

Ankita
2/4/2021 1:51:57 PM



#40 AR-1262-5

R.T.: 8.730 min
Delta R.T.: -0.002 min
Response: 1226001
Conc: 445.68 ng/ml