

Data Path : Z:\pestpcbsrv\HPCHEM1\ECD_0\Data\P0020420\
 Data File : P0066258.D
 Signal(s) : Signal #1: ECD1A.CH Signal #2: ECD2B.CH
 Acq On : 04 Feb 2020 21:39
 Operator : DD\AJ
 Sample : PB126560BL
 Misc :
 ALS Vial : 29 Sample Multiplier: 1

Instrument :
 ECD_0
ClientSampleId :
 PB126560BL

Manual Integrations
APPROVED
 mohammad
 2/6/2020 12:45:23 PM

Integration File signal 1: autoint1.e
 Integration File signal 2: autoint2.e
 Quant Time: Feb 05 04:45:50 2020
 Quant Method : Z:\pestpcbsrv\HPCHEM1\ECD_0\methods\P0013020.M
 Quant Title : GC EXTRACTABLES
 QLast Update : Fri Jan 31 01:14:46 2020
 Response via : Initial Calibration
 Integrator: ChemStation 6890 Scale Mode: Small noise peaks clipped

Volume Inj. : 2 µl
 Signal #1 Phase : ZB-MR1 Signal #2 Phase: ZB-MR2
 Signal #1 Info : 30Mx0.32mmx 0.50µ Signal #2 Info : 30M x 0.32mm x 0.25µm

Compound	RT#1	RT#2	Resp#1	Resp#2	ng/ml	ng/ml

System Monitoring Compounds						
1) SA Tetrachlo...	4.154	3.431	754132	985205	25.888	24.086
2) SA Decachlor...	9.647	8.326	694839	934972	17.632m	15.952

Target Compounds

 (f)=RT Delta > 1/2 Window (#)=Amounts differ by > 25% (m)=manual int.

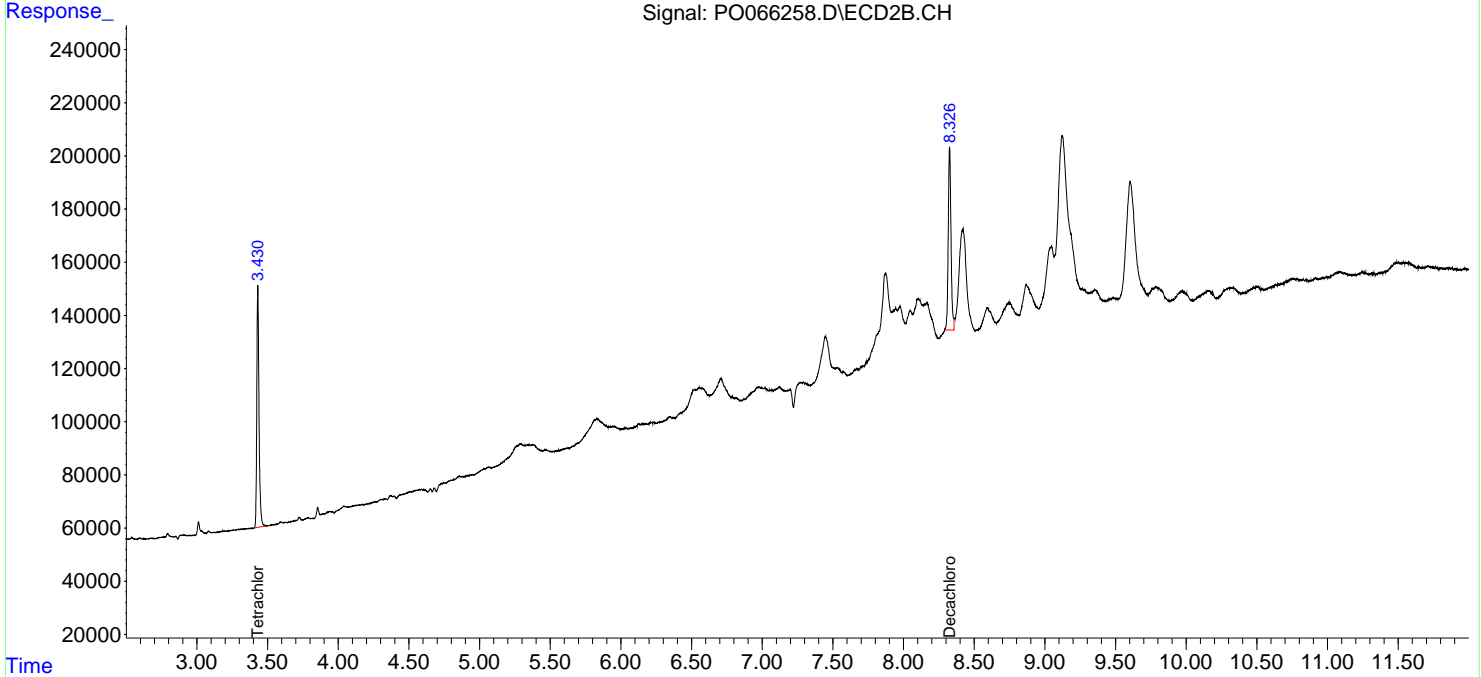
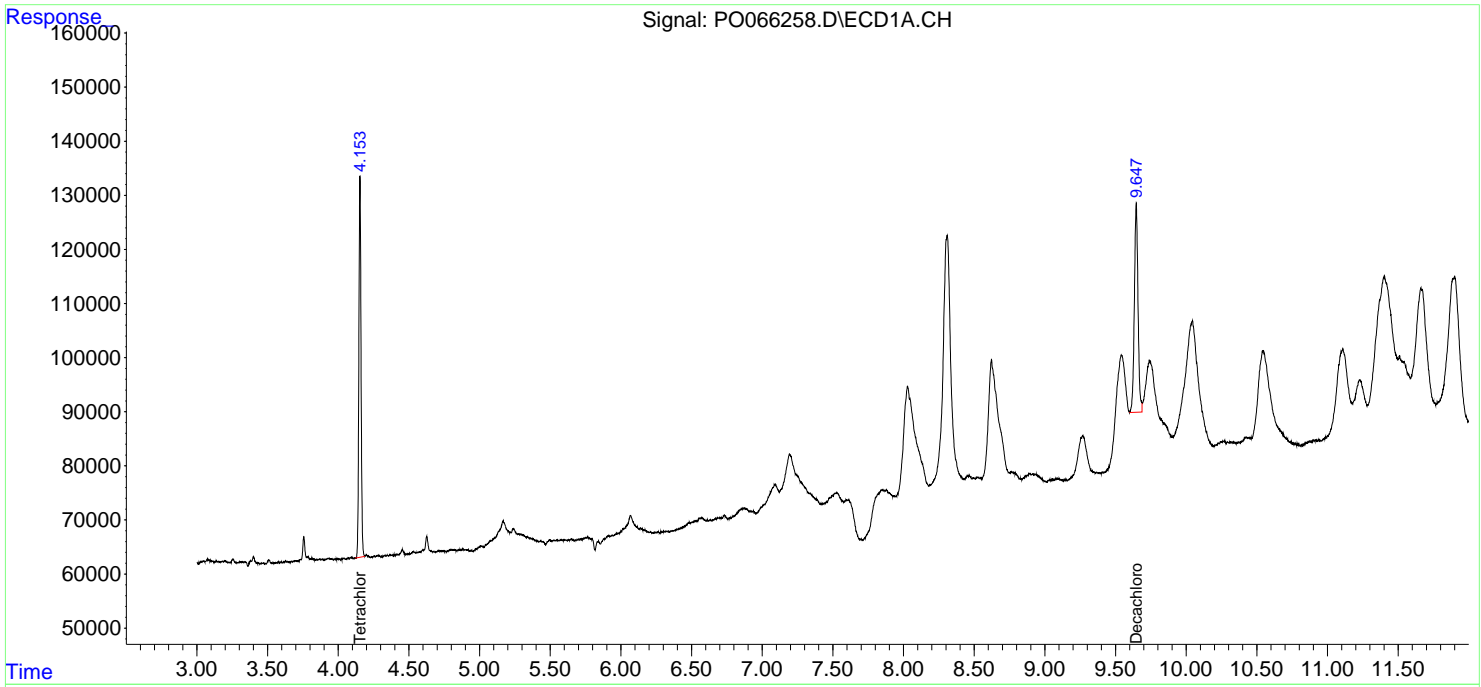
Data Path : Z:\pestpcbsrv\HPCHEM1\ECD_O\Data\P0020420\
 Data File : P0066258.D
 Signal(s) : Signal #1: ECD1A.CH Signal #2: ECD2B.CH
 Acq On : 04 Feb 2020 21:39
 Operator : DD\AJ
 Sample : PB126560BL
 Misc :
 ALS Vial : 29 Sample Multiplier: 1

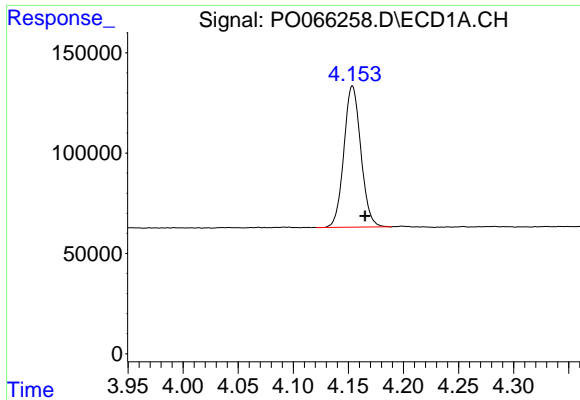
Instrument :
 ECD_O
Client Sampled :
 PB126560BL

Manual Integrations
APPROVED
 mohammad
 2/6/2020 12:45:23 PM

Integration File signal 1: autoint1.e
 Integration File signal 2: autoint2.e
 Quant Time: Feb 05 04:45:50 2020
 Quant Method : Z:\pestpcbsrv\HPCHEM1\ECD_O\methods\P0013020.M
 Quant Title : GC EXTRACTABLES
 QLast Update : Fri Jan 31 01:14:46 2020
 Response via : Initial Calibration
 Integrator: ChemStation 6890 Scale Mode: Small noise peaks clipped

Volume Inj. : 2 µl
 Signal #1 Phase : ZB-MR1 Signal #2 Phase: ZB-MR2
 Signal #1 Info : 30Mx0.32mmx 0.50µ Signal #2 Info : 30M x 0.32mm x 0.25µm

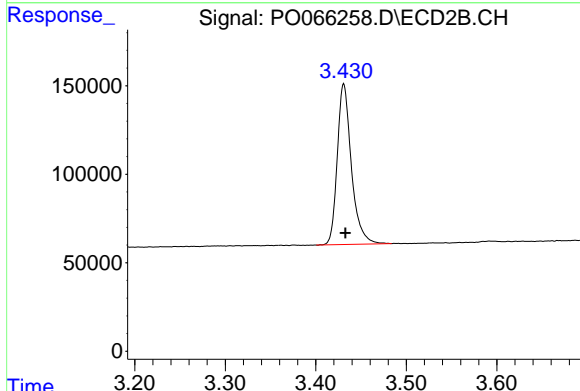




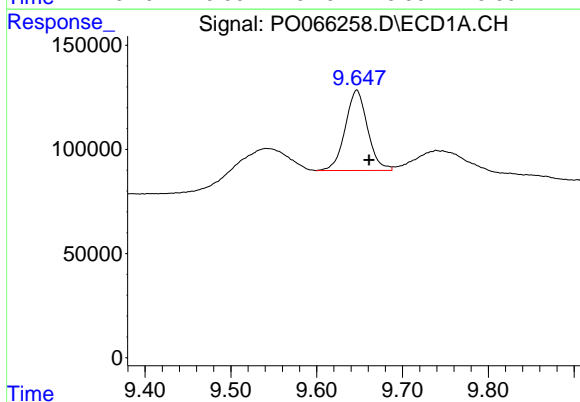
#1 Tetrachloro-m-xylene
 R.T.: 4.154 min
 Delta R.T.: -0.011 min
 Response: 754132
 Conc: 25.89 ng/ml

Instrument :
 ECD_O
 ClientSampled :
 PB126560BL

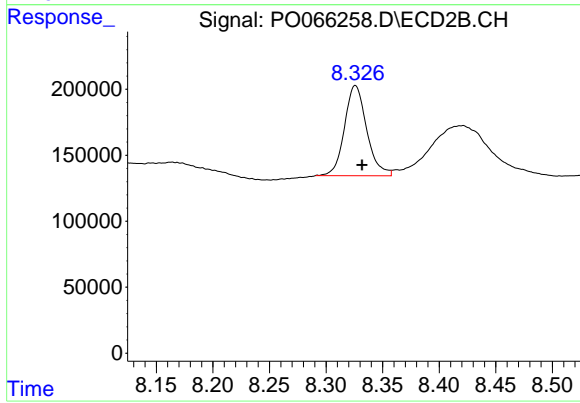
Manual Integrations
 APPROVED
 mohammad
 2/6/2020 12:45:23 PM



#1 Tetrachloro-m-xylene
 R.T.: 3.431 min
 Delta R.T.: -0.002 min
 Response: 985205
 Conc: 24.09 ng/ml



#2 Decachlorobiphenyl
 R.T.: 9.647 min
 Delta R.T.: -0.015 min
 Response: 694839
 Conc: 17.63 ng/ml m



#2 Decachlorobiphenyl
 R.T.: 8.326 min
 Delta R.T.: -0.006 min
 Response: 934972
 Conc: 15.95 ng/ml