

Data Path : Z:\pestpcbsrv\HPCHEM1\ECD_0\Data\P0020521\
 Data File : P0075602.D
 Signal(s) : Signal #1: ECD1A.CH Signal #2: ECD2B.CH
 Acq On : 06 Feb 2021 2:44
 Operator : AJ/MA
 Sample : AR1254CCC500
 Misc :
 ALS Vial : 4 Sample Multiplier: 1

Instrument :
 ECD_0
 ClientSampleId :
 AR1254CCC500

Integration File signal 1: autoint1.e
 Integration File signal 2: autoint2.e
 Quant Time: Feb 06 05:00:26 2021
 Quant Method : Z:\pestpcbsrv\HPCHEM1\ECD_0\methods\P0012821.M
 Quant Title : GC EXTRACTABLES
 QLast Update : Fri Jan 29 09:09:46 2021
 Response via : Initial Calibration
 Integrator: ChemStation 6890 Scale Mode: Small noise peaks clipped

Volume Inj. : 2 µl
 Signal #1 Phase : ZB-MR1 Signal #2 Phase: ZB-MR2
 Signal #1 Info : 30Mx0.32mmx 0.50µ Signal #2 Info : 30M x 0.32mm x 0.25µm

Compound	RT#1	RT#2	Resp#1	Resp#2	ng/ml	ng/ml

System Monitoring Compounds						
1) SA Tetrachlo...	4.922	3.994	5517658	2696434	54.521	56.092
2) SA Decachlor...	10.936	9.242	5590835	2688424	57.947	55.384
Target Compounds						
26) L6 AR-1254-1	7.158	6.101	2453869	1651730	569.360	533.302
27) L6 AR-1254-2	7.388	6.260	3719313	1450186	551.651	540.038
28) L6 AR-1254-3	7.771	6.676	3892862	2293407	564.501	537.854
29) L6 AR-1254-4	8.069	6.914	3169223	1563819	524.227	536.529
30) L6 AR-1254-5	8.498	7.339	2979374	2068871	532.994	533.059

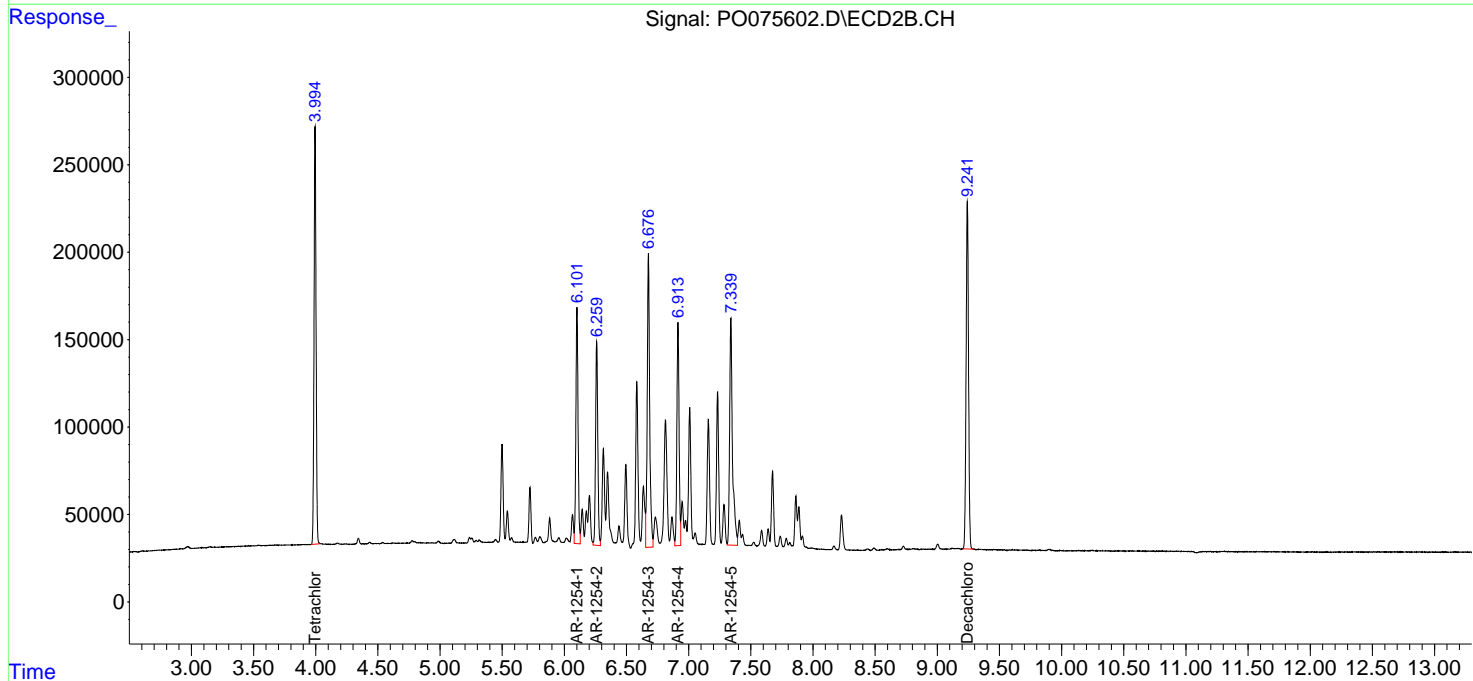
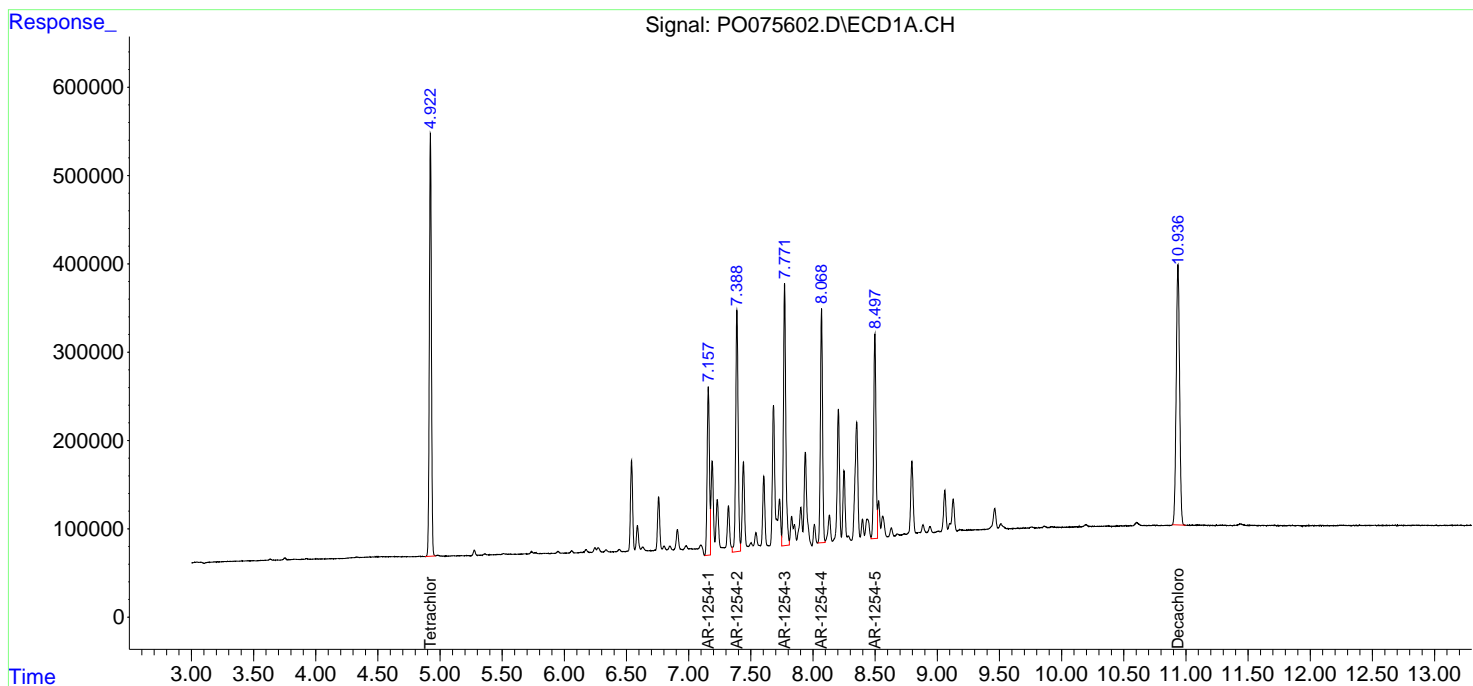
(f)=RT Delta > 1/2 Window (#)=Amounts differ by > 25% (m)=manual int.

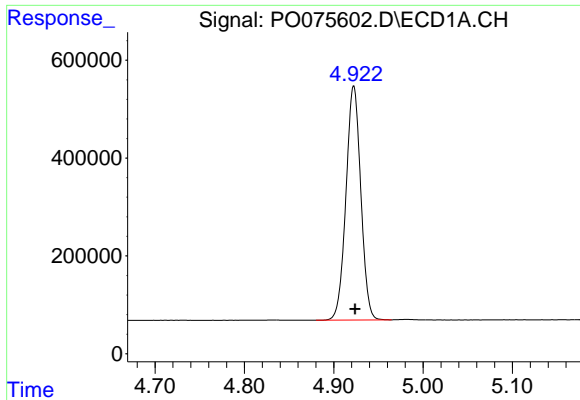
Data Path : Z:\pestpcbsrv\HPCHEM1\ECD_O\Data\P0020521\
 Data File : P0075602.D
 Signal(s) : Signal #1: ECD1A.CH Signal #2: ECD2B.CH
 Acq On : 06 Feb 2021 2:44
 Operator : AJ/MA
 Sample : AR1254CCC500
 Misc :
 ALS Vial : 4 Sample Multiplier: 1

Instrument :
 ECD_O
 ClientSampleID :
 AR1254CCC500

Integration File signal 1: autoint1.e
 Integration File signal 2: autoint2.e
 Quant Time: Feb 06 05:00:26 2021
 Quant Method : Z:\pestpcbsrv\HPCHEM1\ECD_O\methods\P0012821.M
 Quant Title : GC EXTRACTABLES
 QLast Update : Fri Jan 29 09:09:46 2021
 Response via : Initial Calibration
 Integrator: ChemStation 6890 Scale Mode: Small noise peaks clipped

Volume Inj. : 2 µl
 Signal #1 Phase : ZB-MR1 Signal #2 Phase: ZB-MR2
 Signal #1 Info : 30Mx0.32mmx 0.50µ Signal #2 Info : 30M x 0.32mm x 0.25µm

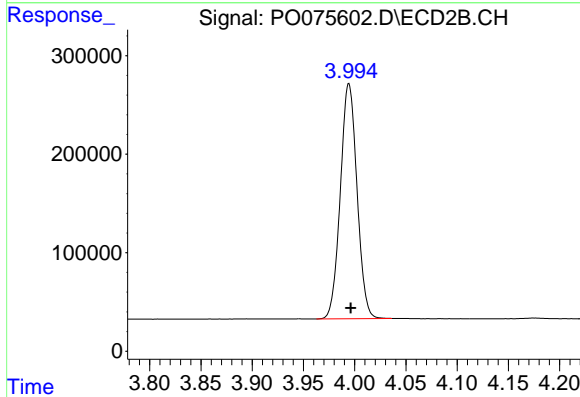




#1 Tetrachloro-m-xylene

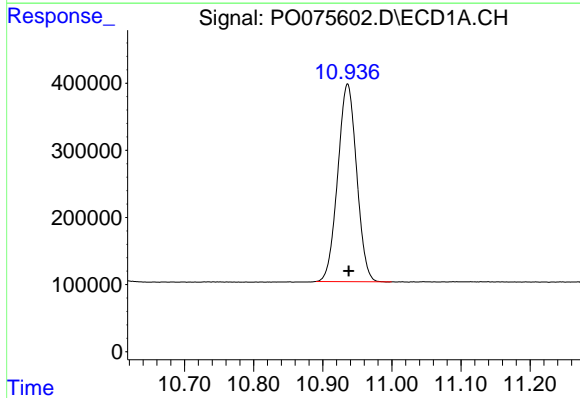
R.T.: 4.922 min
 Delta R.T.: -0.002 min
 Response: 5517658
 Conc: 54.52 ng/ml

Instrument :
 ECD_O
 ClientSampleId :
 AR1254CCC500



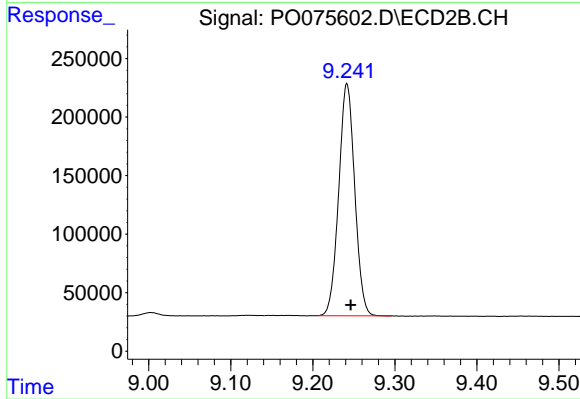
#1 Tetrachloro-m-xylene

R.T.: 3.994 min
 Delta R.T.: -0.002 min
 Response: 2696434
 Conc: 56.09 ng/ml



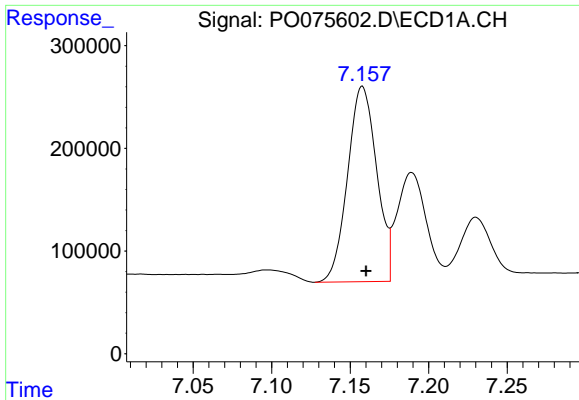
#2 Decachlorobiphenyl

R.T.: 10.936 min
 Delta R.T.: -0.002 min
 Response: 5590835
 Conc: 57.95 ng/ml



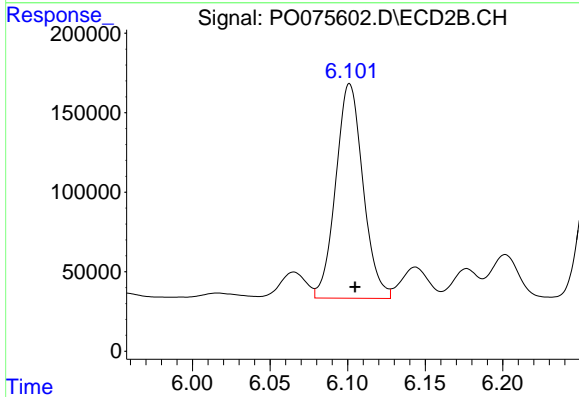
#2 Decachlorobiphenyl

R.T.: 9.242 min
 Delta R.T.: -0.005 min
 Response: 2688424
 Conc: 55.38 ng/ml

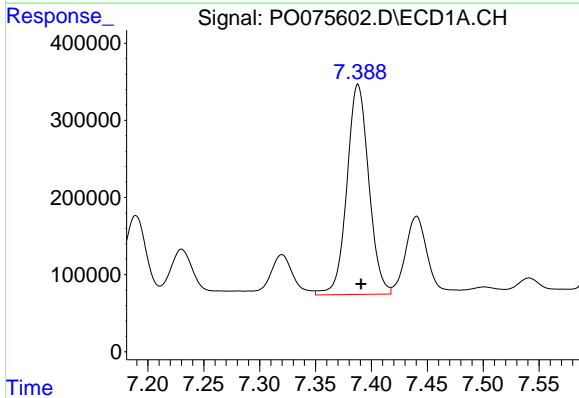


#26 AR-1254-1
 R.T.: 7.158 min
 Delta R.T.: -0.002 min
 Response: 2453869
 Conc: 569.36 ng/ml

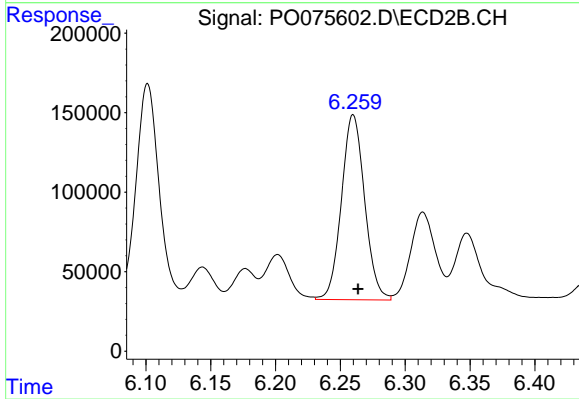
Instrument :
 ECD_O
ClientSampleId :
 AR1254CCC500



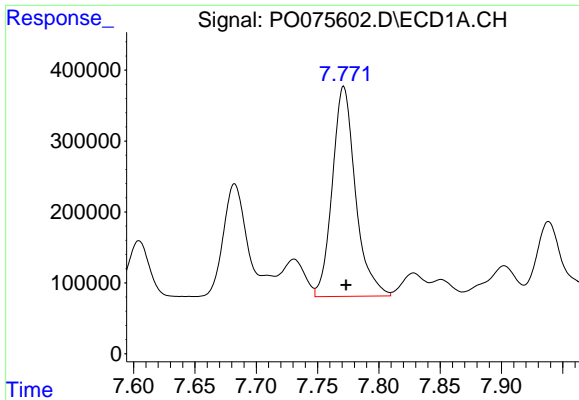
#26 AR-1254-1
 R.T.: 6.101 min
 Delta R.T.: -0.003 min
 Response: 1651730
 Conc: 533.30 ng/ml



#27 AR-1254-2
 R.T.: 7.388 min
 Delta R.T.: -0.003 min
 Response: 3719313
 Conc: 551.65 ng/ml



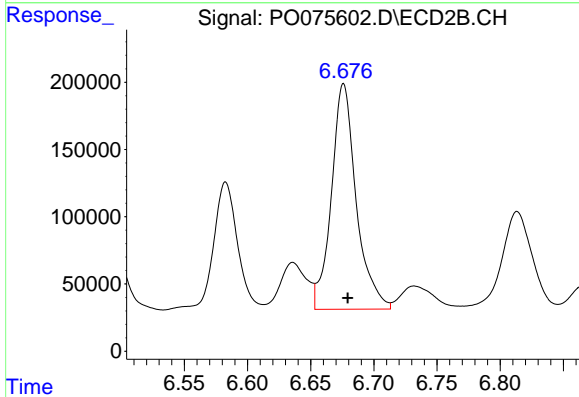
#27 AR-1254-2
 R.T.: 6.260 min
 Delta R.T.: -0.004 min
 Response: 1450186
 Conc: 540.04 ng/ml



#28 AR-1254-3

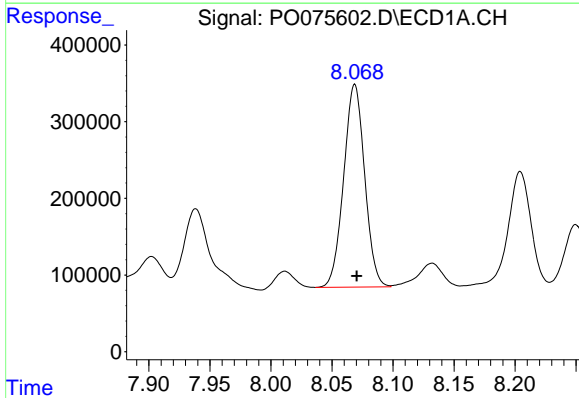
R.T.: 7.771 min
 Delta R.T.: -0.002 min
 Response: 3892862
 Conc: 564.50 ng/ml

Instrument :
 ECD_O
 ClientSampleId :
 AR1254CCC500



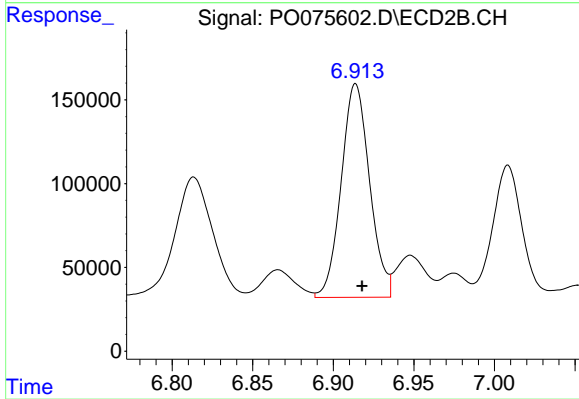
#28 AR-1254-3

R.T.: 6.676 min
 Delta R.T.: -0.003 min
 Response: 2293407
 Conc: 537.85 ng/ml



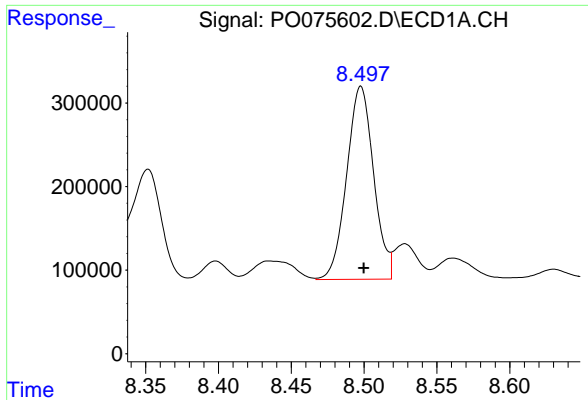
#29 AR-1254-4

R.T.: 8.069 min
 Delta R.T.: -0.002 min
 Response: 3169223
 Conc: 524.23 ng/ml



#29 AR-1254-4

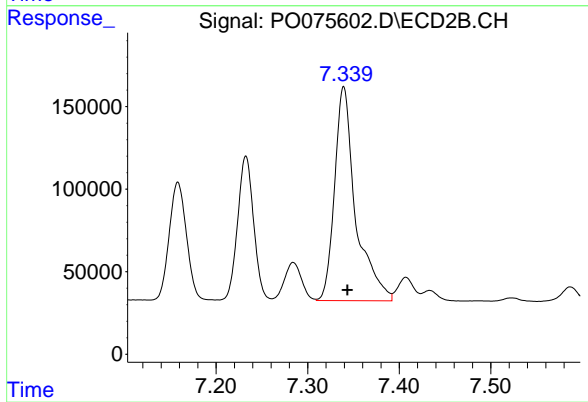
R.T.: 6.914 min
 Delta R.T.: -0.004 min
 Response: 1563819
 Conc: 536.53 ng/ml



#30 AR-1254-5

R.T.: 8.498 min
Delta R.T.: -0.002 min
Response: 2979374
Conc: 532.99 ng/ml

Instrument :
ECD_O
ClientSampled :
AR1254CCC500



#30 AR-1254-5

R.T.: 7.339 min
Delta R.T.: -0.004 min
Response: 2068871
Conc: 533.06 ng/ml