

Data Path : Z:\pestpcbsrv\HPCHEM1\ECD_0\Data\P0020623\
 Data File : P0092390.D
 Signal(s) : Signal #1: ECD1A.ch Signal #2: ECD2B.ch
 Acq On : 06 Feb 2023 17:47
 Operator : YP/AJ
 Sample : I.BLK
 Misc :
 ALS Vial : 2 Sample Multiplier: 1

Instrument :
 ECD_0
 ClientSampleId :

Integration File signal 1: autoint1.e
 Integration File signal 2: autoint2.e
 Quant Time: Feb 06 21:19:03 2023
 Quant Method : Z:\pestpcbsrv\HPCHEM1\ECD_0\methods\P0012323.M
 Quant Title : GC EXTRACTABLES
 QLast Update : Tue Jan 24 04:40:59 2023
 Response via : Initial Calibration
 Integrator: ChemStation

Volume Inj. : 2 µl
 Signal #1 Phase : ZB-MR2 Signal #2 Phase: ZB-MR2
 Signal #1 Info : 30Mx0.32mmx 0.50µ Signal #2 Info : 30M x 0.32mm x 0.25µm

Compound	RT#1	RT#2	Resp#1	Resp#2	ng/ml	ng/ml

System Monitoring Compounds						
1) SA Tetrachlo...	4.447	3.644	60422763	27926447	20.872	19.889
2) SA Decachlor...	10.366	8.684	48788606	25763867	23.639	22.822
Target Compounds						
3) L1 AR-1016-1	5.571f	0.000	1314165	0	14.369	N.D. #
8) L2 AR-1221-1	0.000	3.944f	0	357168	N.D.	18.867 #
9) L2 AR-1221-2	4.756	3.944	624792	357168	22.576	25.414
10) L2 AR-1221-3	4.756f	0.000	624792	0	7.404	N.D. #
11) L3 AR-1232-1	4.756f	0.000	624792	0	9.029	N.D. #
16) L4 AR-1242-1	5.571f	0.000	1314165	0	16.851	N.D. #
21) L5 AR-1248-1	5.571f	0.000	1314165	0	22.641	N.D. #
38) L8 AR-1262-3	0.000	7.510f	0	475864	N.D.	7.614 #
41) L9 AR-1268-1	0.000	7.510f	0	475864	N.D.	2.615 #

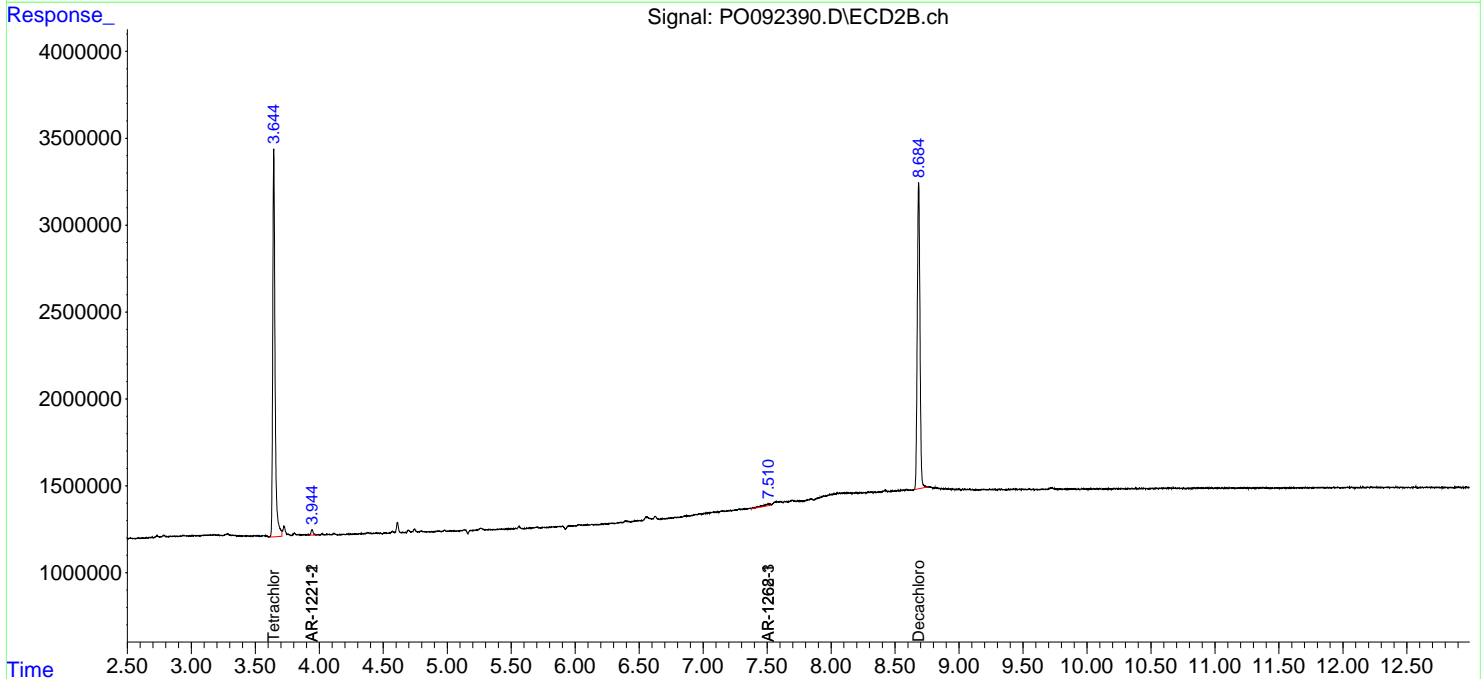
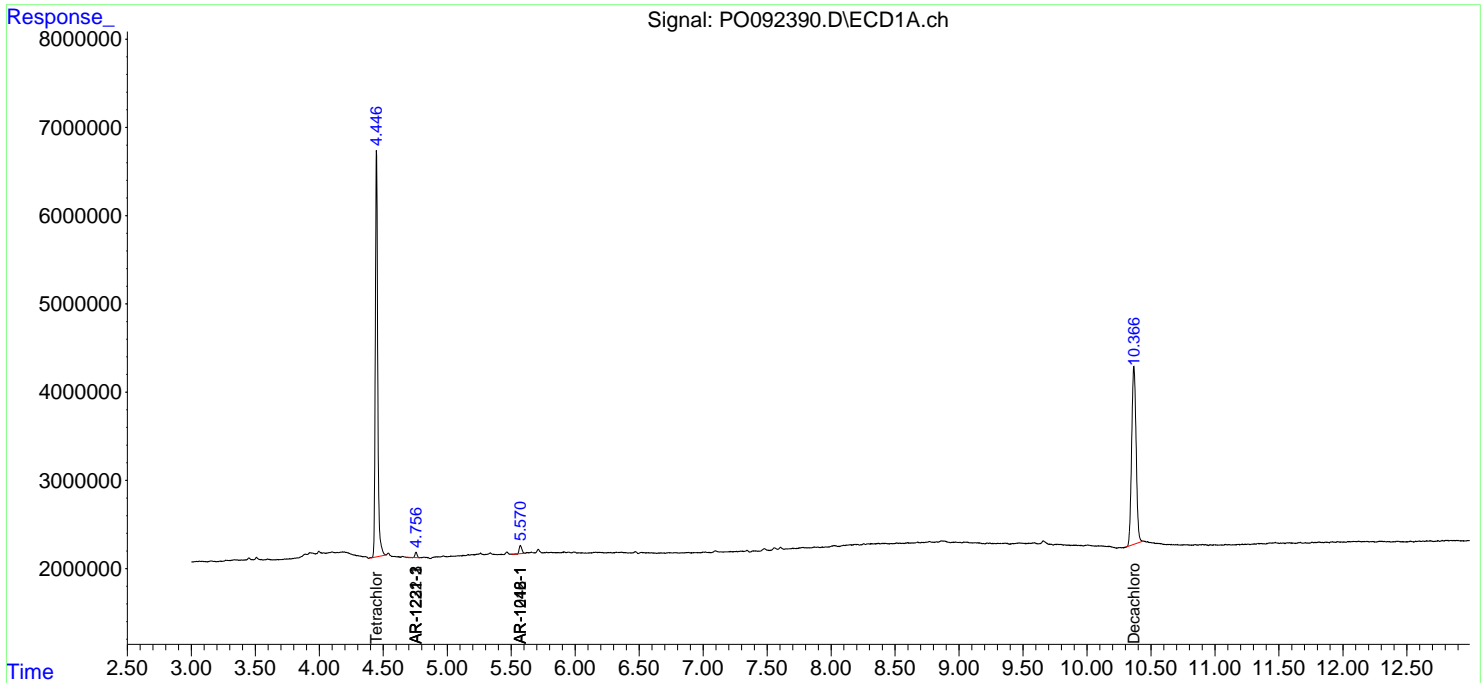
(f)=RT Delta > 1/2 Window (#)=Amounts differ by > 25% (m)=manual int.

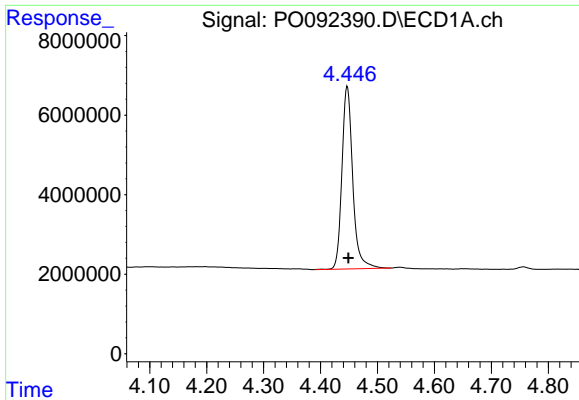
Data Path : Z:\pestpcbsrv\HPCHEM1\ECD_O\Data\P0020623\
 Data File : P0092390.D
 Signal(s) : Signal #1: ECD1A.ch Signal #2: ECD2B.ch
 Acq On : 06 Feb 2023 17:47
 Operator : YP/AJ
 Sample : I.BLK
 Misc :
 ALS Vial : 2 Sample Multiplier: 1

Instrument :
 ECD_O
 ClientSampleId :

Integration File signal 1: autoint1.e
 Integration File signal 2: autoint2.e
 Quant Time: Feb 06 21:19:03 2023
 Quant Method : Z:\pestpcbsrv\HPCHEM1\ECD_O\methods\P0012323.M
 Quant Title : GC EXTRACTABLES
 QLast Update : Tue Jan 24 04:40:59 2023
 Response via : Initial Calibration
 Integrator: ChemStation

Volume Inj. : 2 µl
 Signal #1 Phase : ZB-MR1 Signal #2 Phase: ZB-MR2
 Signal #1 Info : 30Mx0.32mmx 0.50µ Signal #2 Info : 30M x 0.32mm x 0.25µm

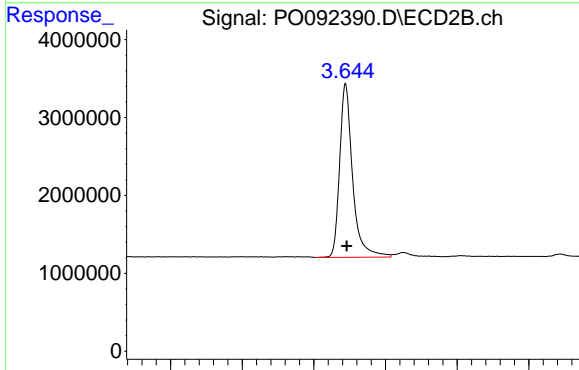




#1 Tetrachloro-m-xylene

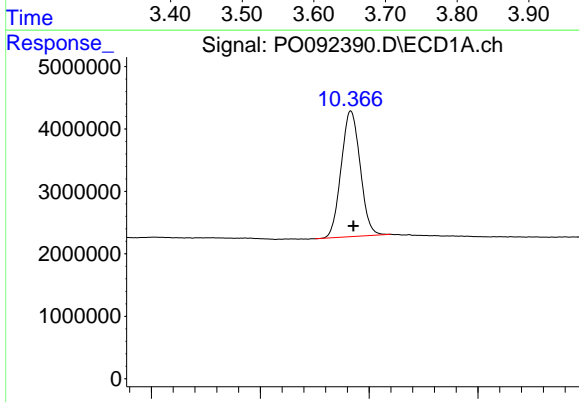
R.T.: 4.447 min
 Delta R.T.: -0.002 min
 Response: 60422763
 Conc: 20.87 ng/ml

Instrument :
 ECD_O
 ClientSampleId :



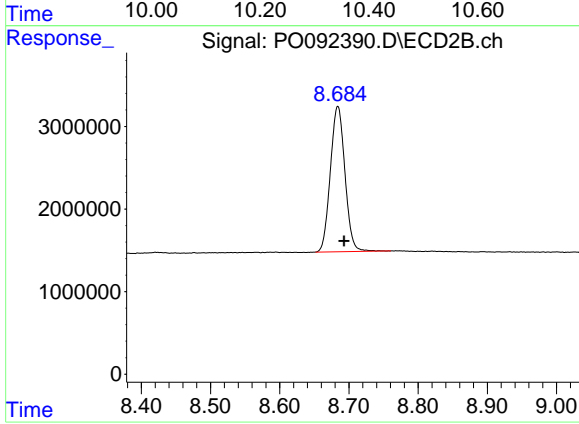
#1 Tetrachloro-m-xylene

R.T.: 3.644 min
 Delta R.T.: -0.002 min
 Response: 27926447
 Conc: 19.89 ng/ml



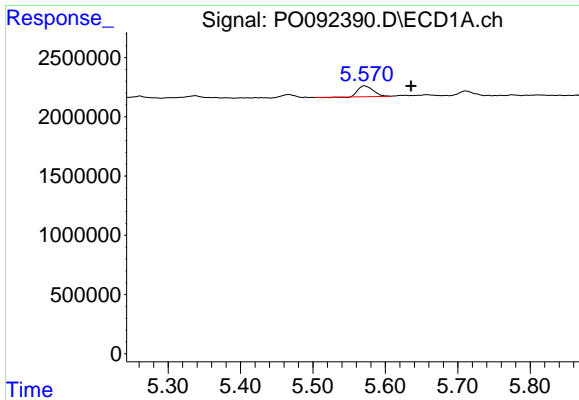
#2 Decachlorobiphenyl

R.T.: 10.366 min
 Delta R.T.: -0.005 min
 Response: 48788606
 Conc: 23.64 ng/ml



#2 Decachlorobiphenyl

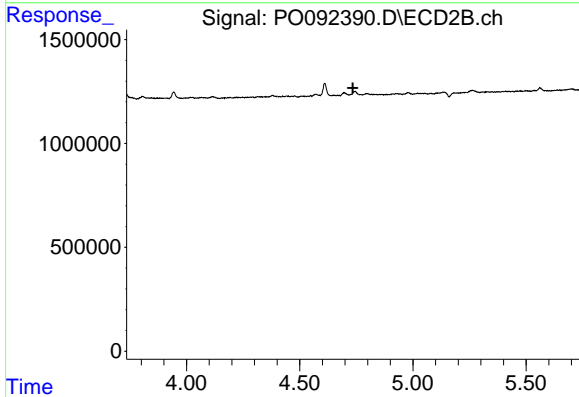
R.T.: 8.684 min
 Delta R.T.: -0.009 min
 Response: 25763867
 Conc: 22.82 ng/ml



#3 AR-1016-1

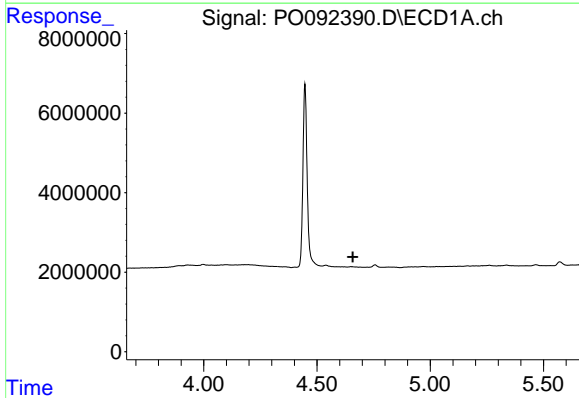
R.T.: 5.571 min
 Delta R.T.: -0.064 min
 Response: 1314165
 Conc: 14.37 ng/ml

Instrument :
 ECD_O
 ClientSampleId :



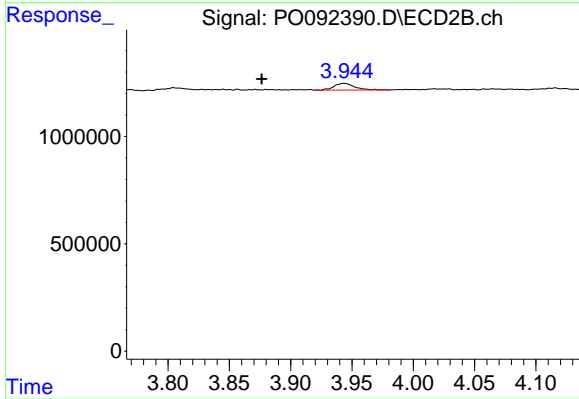
#3 AR-1016-1

R.T.: 0.000 min
 Exp R.T. : 4.735 min
 Response: 0
 Conc: N.D.



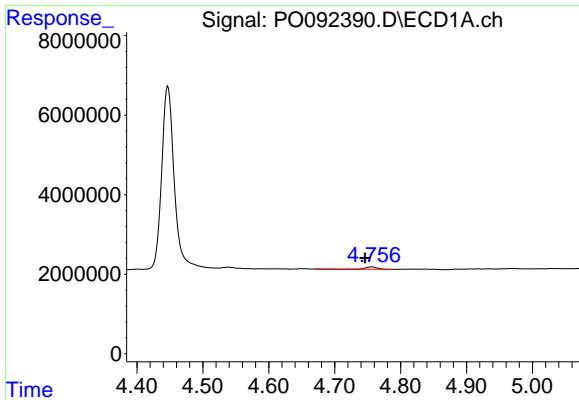
#8 AR-1221-1

R.T.: 0.000 min
 Exp R.T. : 4.659 min
 Response: 0
 Conc: N.D.



#8 AR-1221-1

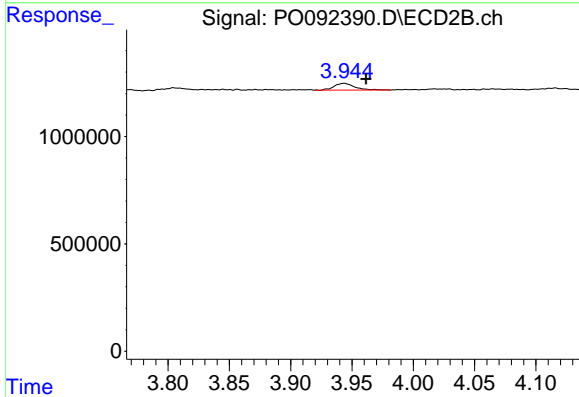
R.T.: 3.944 min
 Delta R.T.: 0.067 min
 Response: 357168
 Conc: 18.87 ng/ml



#9 AR-1221-2

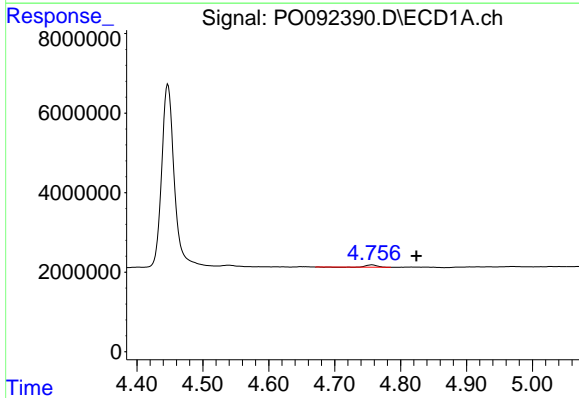
R.T.: 4.756 min
 Delta R.T.: 0.010 min
 Response: 624792
 Conc: 22.58 ng/ml

Instrument :
 ECD_O
 ClientSampleId :



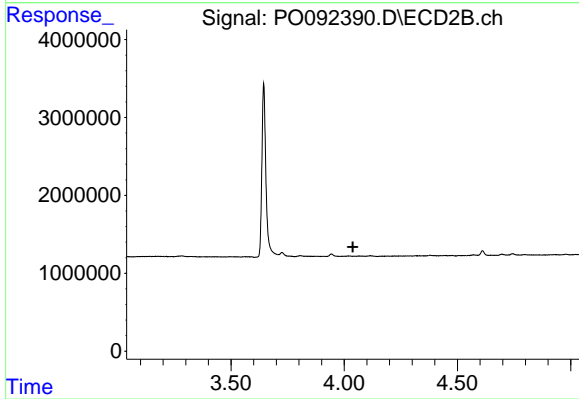
#9 AR-1221-2

R.T.: 3.944 min
 Delta R.T.: -0.018 min
 Response: 357168
 Conc: 25.41 ng/ml



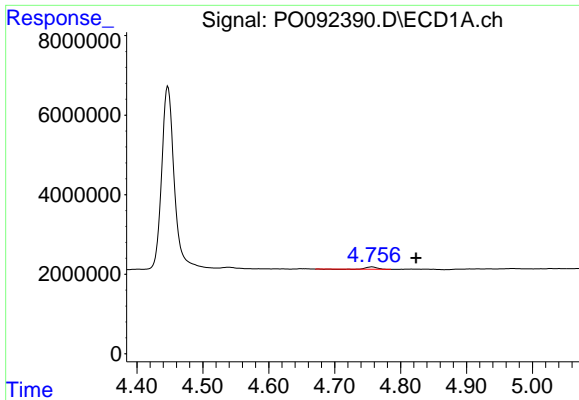
#10 AR-1221-3

R.T.: 4.756 min
 Delta R.T.: -0.067 min
 Response: 624792
 Conc: 7.40 ng/ml



#10 AR-1221-3

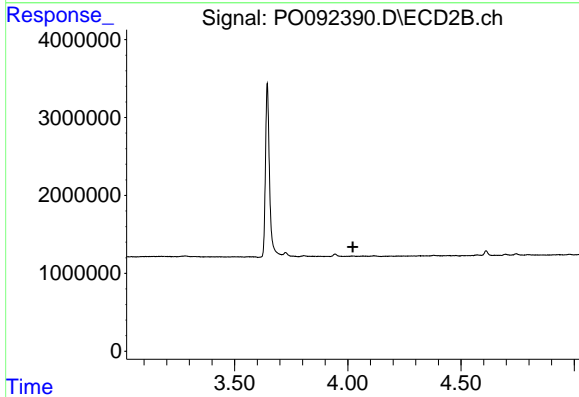
R.T.: 0.000 min
 Exp R.T. : 4.038 min
 Response: 0
 Conc: N.D.



#11 AR-1232-1

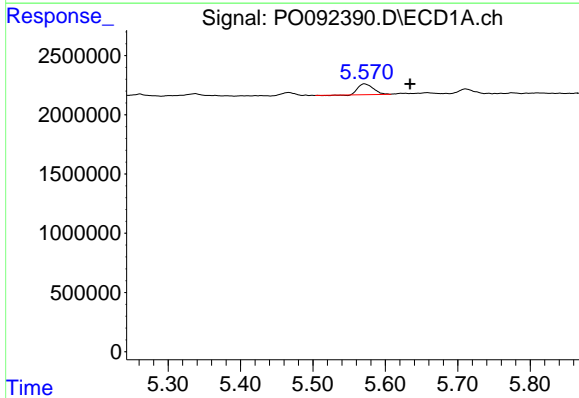
R.T.: 4.756 min
 Delta R.T.: -0.067 min
 Response: 624792
 Conc: 9.03 ng/ml

Instrument :
 ECD_O
 ClientSampleId :



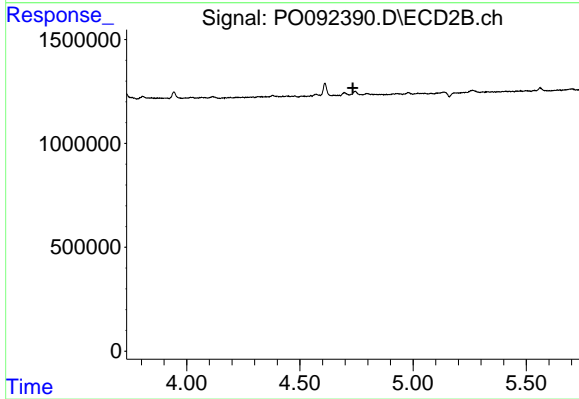
#11 AR-1232-1

R.T.: 0.000 min
 Exp R.T. : 4.022 min
 Response: 0
 Conc: N.D.



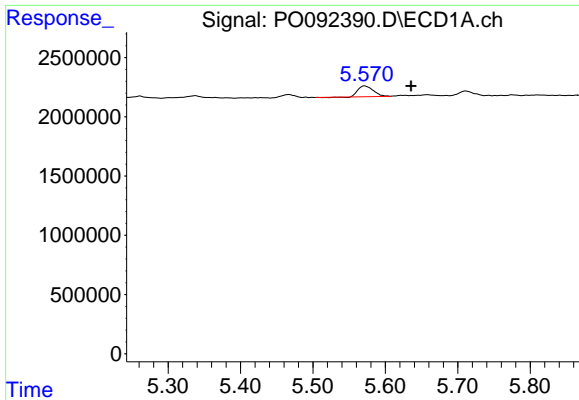
#16 AR-1242-1

R.T.: 5.571 min
 Delta R.T.: -0.063 min
 Response: 1314165
 Conc: 16.85 ng/ml



#16 AR-1242-1

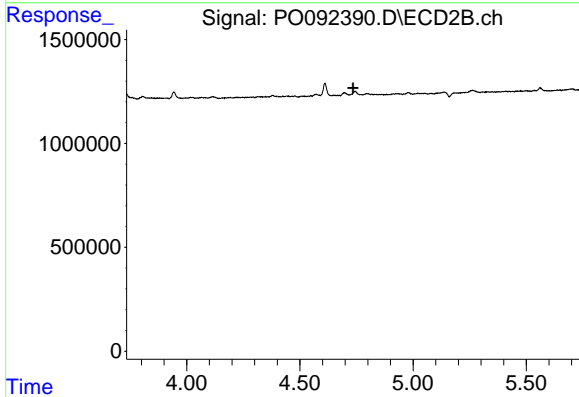
R.T.: 0.000 min
 Exp R.T. : 4.734 min
 Response: 0
 Conc: N.D.



#21 AR-1248-1

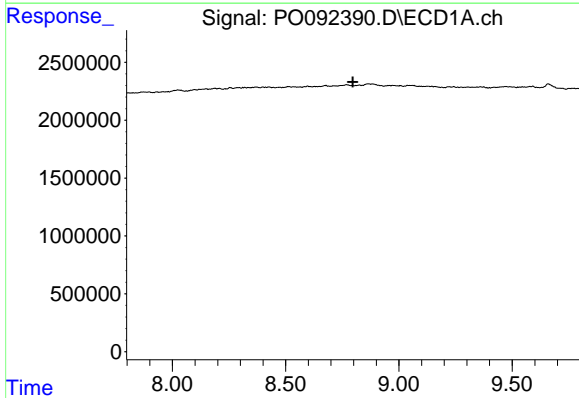
R.T.: 5.571 min
 Delta R.T.: -0.064 min
 Response: 1314165
 Conc: 22.64 ng/ml

Instrument :
 ECD_O
 ClientSampleId :



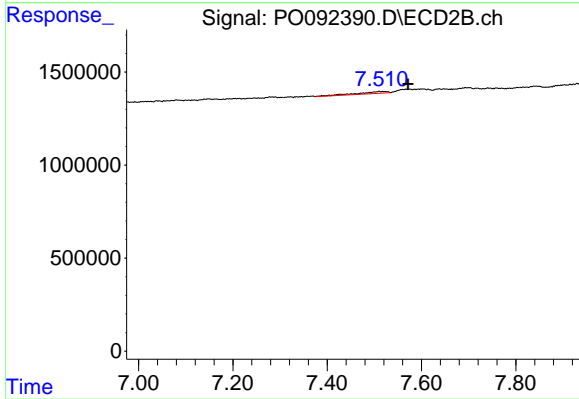
#21 AR-1248-1

R.T.: 0.000 min
 Exp R.T. : 4.734 min
 Response: 0
 Conc: N.D.



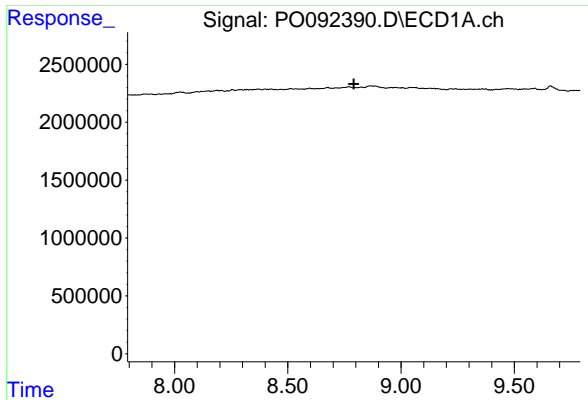
#38 AR-1262-3

R.T.: 0.000 min
 Exp R.T. : 8.797 min
 Response: 0
 Conc: N.D.



#38 AR-1262-3

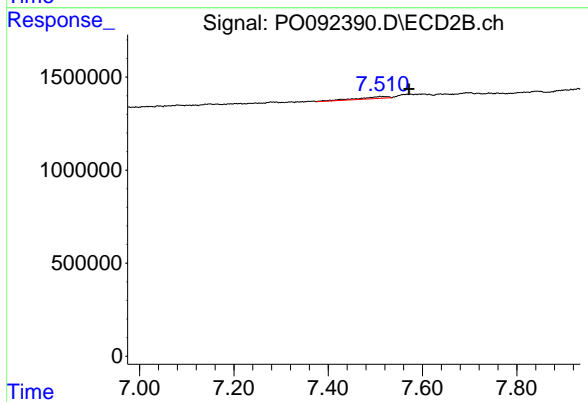
R.T.: 7.510 min
 Delta R.T.: -0.062 min
 Response: 475864
 Conc: 7.61 ng/ml



#41 AR-1268-1

R.T.: 0.000 min
 Exp R.T.: 8.792 min
 Response: 0
 Conc: N.D.

Instrument :
 ECD_O
 ClientSampleId :



#41 AR-1268-1

R.T.: 7.510 min
 Delta R.T.: -0.062 min
 Response: 475864
 Conc: 2.62 ng/ml