

Data Path : Z:\pestpcbsrv\HPCHEM1\ECD_O\Data\P0020922\
 Data File : P0084528.D
 Signal(s) : Signal #1: ECD1A.CH Signal #2: ECD2B.CH
 Acq On : 09 Feb 2022 10:22
 Operator : YP\AJ
 Sample : AR1660CCC500
 Misc :
 ALS Vial : 3 Sample Multiplier: 1

Instrument :
 ECD_O
 ClientSampleId :
 AR1660CCC500

Integration File signal 1: autoint1.e
 Integration File signal 2: autoint2.e
 Quant Time: Feb 10 07:21:34 2022
 Quant Method : Z:\pestpcbsrv\HPCHEM1\ECD_O\methods\P0020822.M
 Quant Title : GC EXTRACTABLES
 QLast Update : Thu Feb 10 07:10:18 2022
 Response via : Initial Calibration
 Integrator: ChemStation 6890 Scale Mode: Small noise peaks clipped

Volume Inj. : 2 µl
 Signal #1 Phase : ZB-MR2 Signal #2 Phase: ZB-MR2
 Signal #1 Info : 30Mx0.32mmx 0.50µ Signal #2 Info : 30M x 0.32mm x 0.25µm

Compound	RT#1	RT#2	Resp#1	Resp#2	ng/ml	ng/ml

System Monitoring Compounds						
1) SA Tetrachlo...	4.508	3.767	5910859	2160292	51.984	47.020
2) SA Decachlor...	10.447	8.809	4368942	1871454	54.546	49.970
Target Compounds						
3) L1 AR-1016-1	5.700	4.859	2151213	834971	537.504	488.088
4) L1 AR-1016-2	5.722	4.878	3174623	1173675	540.002	482.740
5) L1 AR-1016-3	5.785	5.055	1958967	646995	537.423	491.522
6) L1 AR-1016-4	5.886	5.096	1598706	552040	538.682	492.032
7) L1 AR-1016-5	6.186	5.311	1568799	686686	543.357	487.333
31) L7 AR-1260-1	7.331	6.345	2416008	1135769	517.529	491.542
32) L7 AR-1260-2	7.591	6.533	2772296	1341031	534.561	496.061
33) L7 AR-1260-3	7.956	6.687	2080600	1265955	541.948	499.442
34) L7 AR-1260-4	8.188	7.160	2405026	1067717	550.285	503.424
35) L7 AR-1260-5	8.523	7.401	4724452	2269672	540.445	491.464

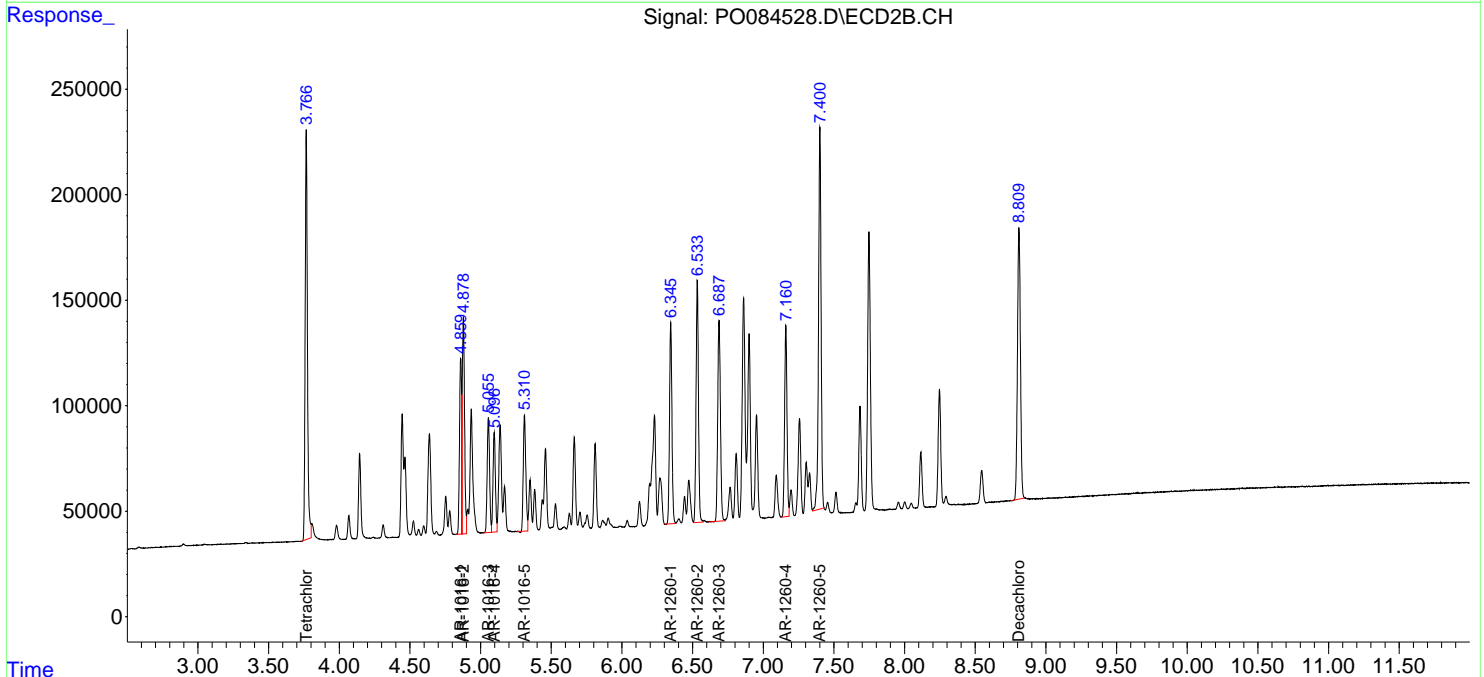
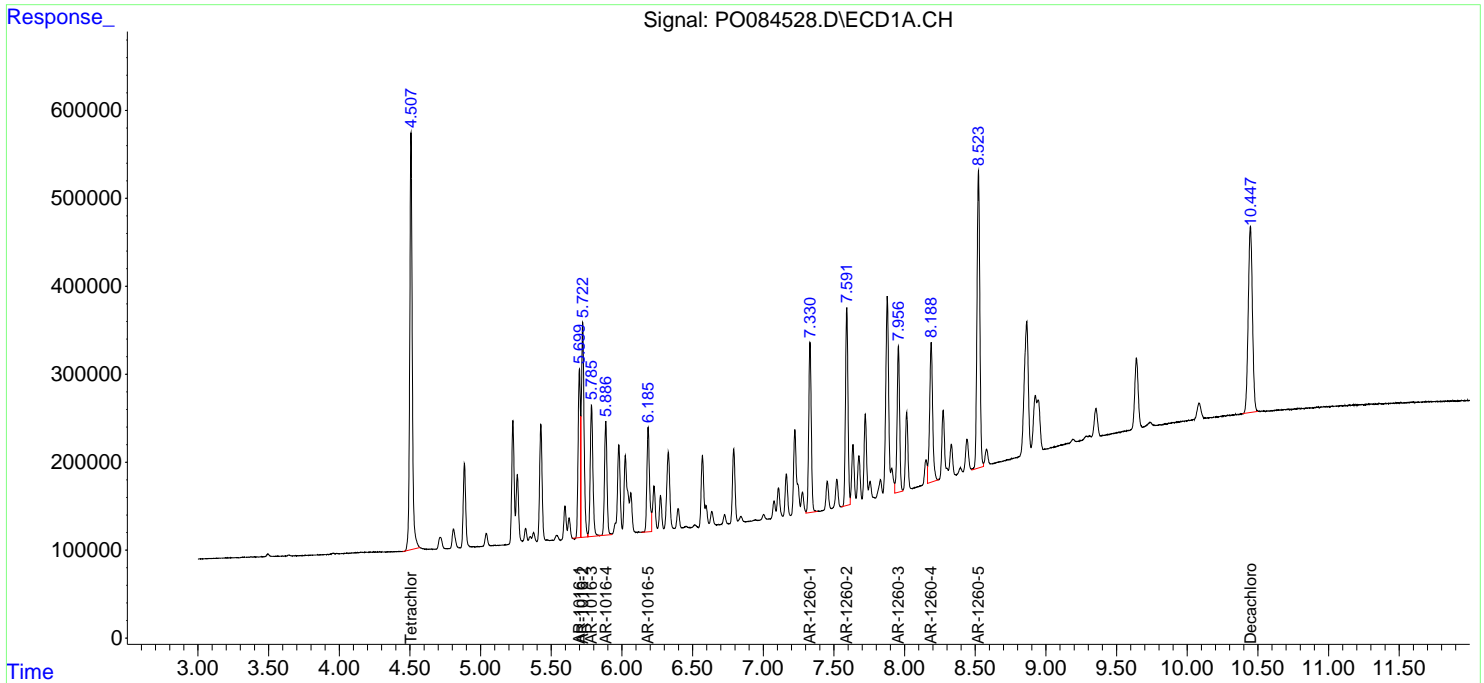
(f)=RT Delta > 1/2 Window (#)=Amounts differ by > 25% (m)=manual int.

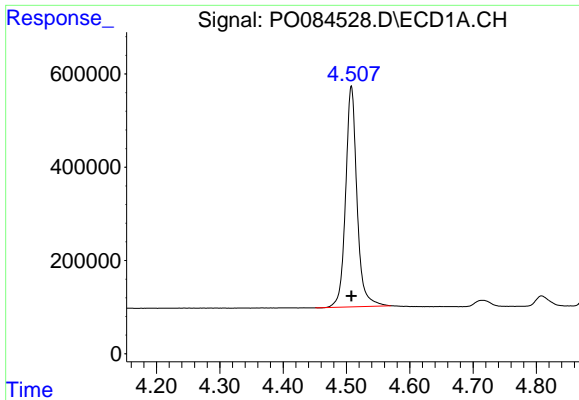
Data Path : Z:\pestpcbsrv\HPCHEM1\ECD_0\Data\P0020922\
 Data File : P0084528.D
 Signal(s) : Signal #1: ECD1A.CH Signal #2: ECD2B.CH
 Acq On : 09 Feb 2022 10:22
 Operator : YP\AJ
 Sample : AR1660CCC500
 Misc :
 ALS Vial : 3 Sample Multiplier: 1

Instrument :
 ECD_O
 ClientSampleId :
 AR1660CCC500

Integration File signal 1: autoint1.e
 Integration File signal 2: autoint2.e
 Quant Time: Feb 10 07:21:34 2022
 Quant Method : Z:\pestpcbsrv\HPCHEM1\ECD_0\methods\P0020822.M
 Quant Title : GC EXTRACTABLES
 QLast Update : Thu Feb 10 07:10:18 2022
 Response via : Initial Calibration
 Integrator: ChemStation 6890 Scale Mode: Small noise peaks clipped

Volume Inj. : 2 µl
 Signal #1 Phase : ZB-MR1 Signal #2 Phase: ZB-MR2
 Signal #1 Info : 30Mx0.32mmx 0.50µ Signal #2 Info : 30M x 0.32mm x 0.25µm

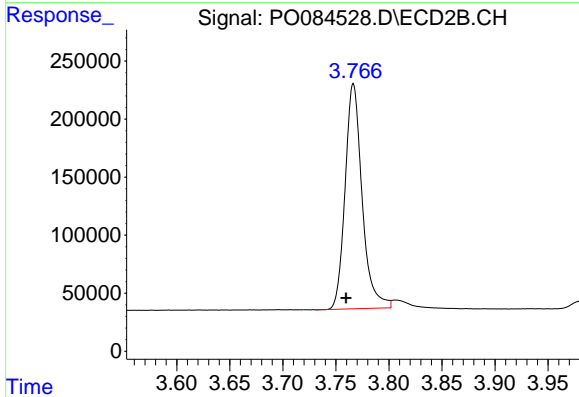




#1 Tetrachloro-m-xylene

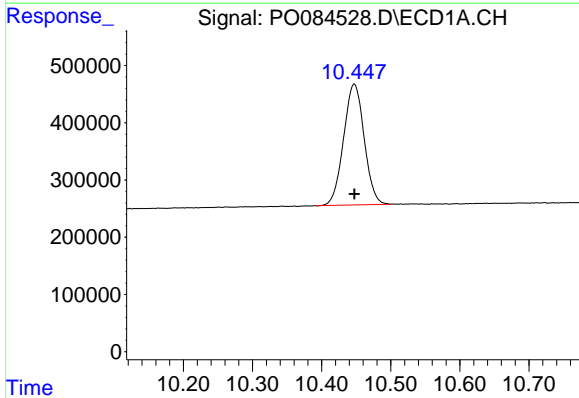
R.T.: 4.508 min
 Delta R.T.: 0.000 min
 Response: 5910859
 Conc: 51.98 ng/ml

Instrument :
 ECD_O
 ClientSampleId :
 AR1660CCC500



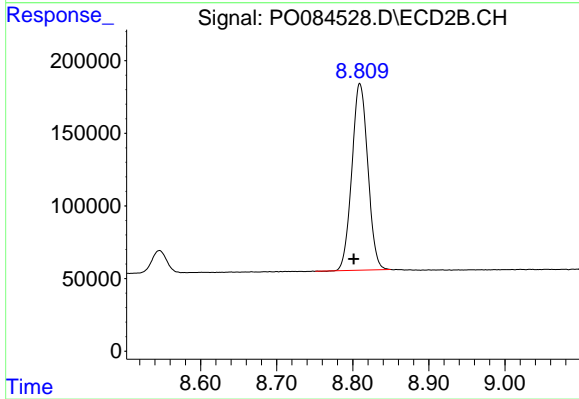
#1 Tetrachloro-m-xylene

R.T.: 3.767 min
 Delta R.T.: 0.007 min
 Response: 2160292
 Conc: 47.02 ng/ml



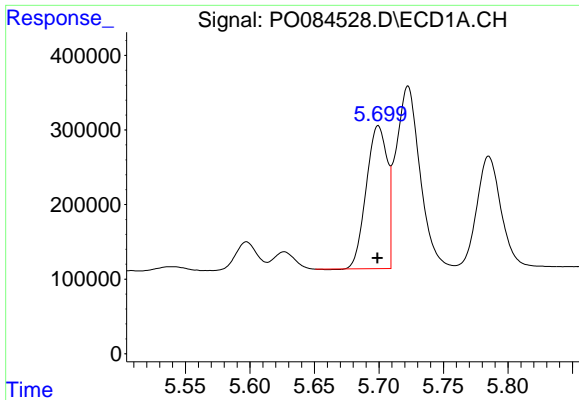
#2 Decachlorobiphenyl

R.T.: 10.447 min
 Delta R.T.: 0.000 min
 Response: 4368942
 Conc: 54.55 ng/ml



#2 Decachlorobiphenyl

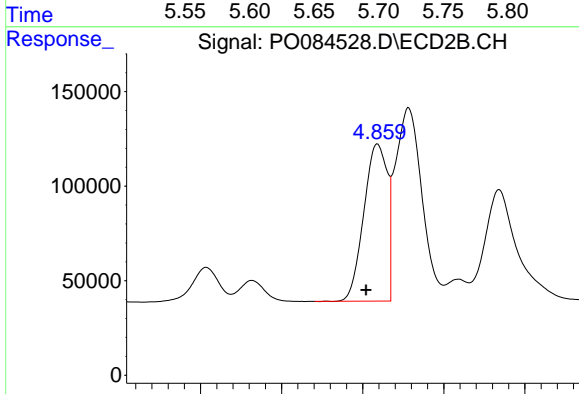
R.T.: 8.809 min
 Delta R.T.: 0.008 min
 Response: 1871454
 Conc: 49.97 ng/ml



#3 AR-1016-1

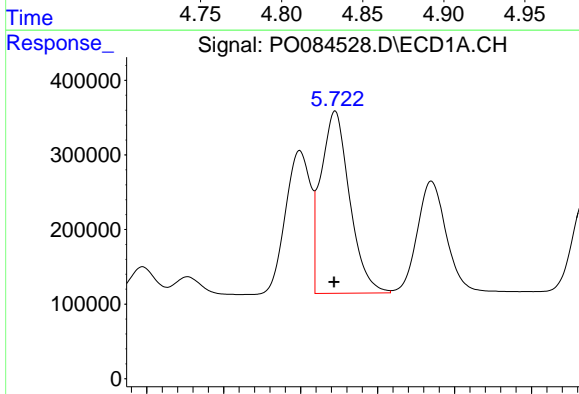
R.T.: 5.700 min
 Delta R.T.: 0.000 min
 Response: 2151213
 Conc: 537.50 ng/ml

Instrument :
 ECD_O
 ClientSampleId :
 AR1660CCC500



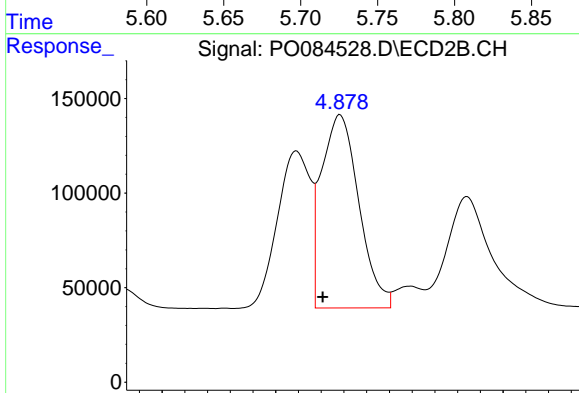
#3 AR-1016-1

R.T.: 4.859 min
 Delta R.T.: 0.007 min
 Response: 834971
 Conc: 488.09 ng/ml



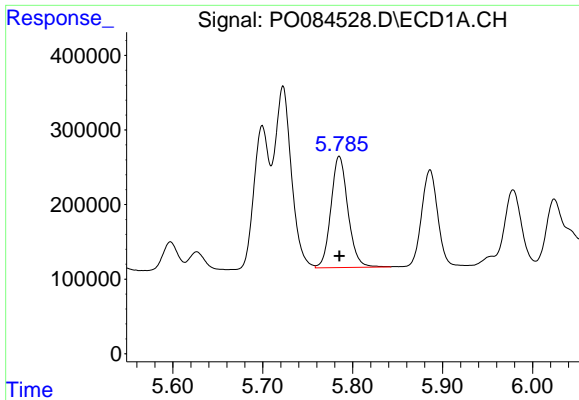
#4 AR-1016-2

R.T.: 5.722 min
 Delta R.T.: 0.000 min
 Response: 3174623
 Conc: 540.00 ng/ml



#4 AR-1016-2

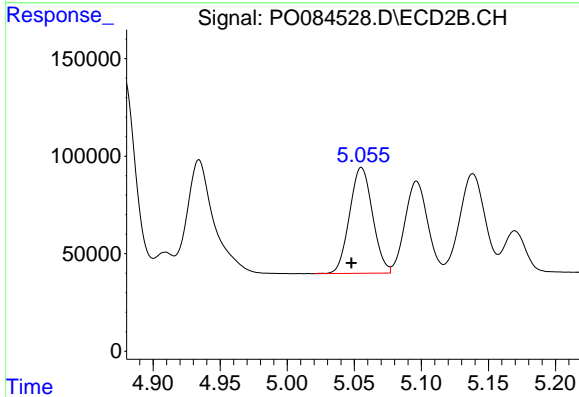
R.T.: 4.878 min
 Delta R.T.: 0.008 min
 Response: 1173675
 Conc: 482.74 ng/ml



#5 AR-1016-3

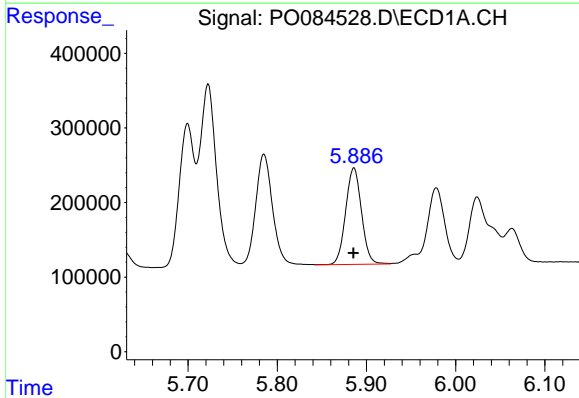
R.T.: 5.785 min
 Delta R.T.: 0.000 min
 Response: 1958967
 Conc: 537.42 ng/ml

Instrument :
 ECD_O
 ClientSampleId :
 AR1660CCC500



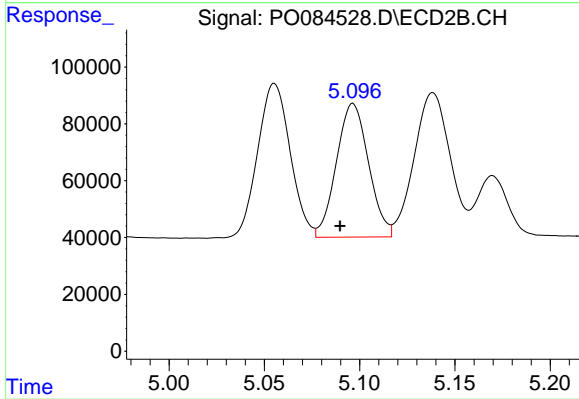
#5 AR-1016-3

R.T.: 5.055 min
 Delta R.T.: 0.008 min
 Response: 646995
 Conc: 491.52 ng/ml



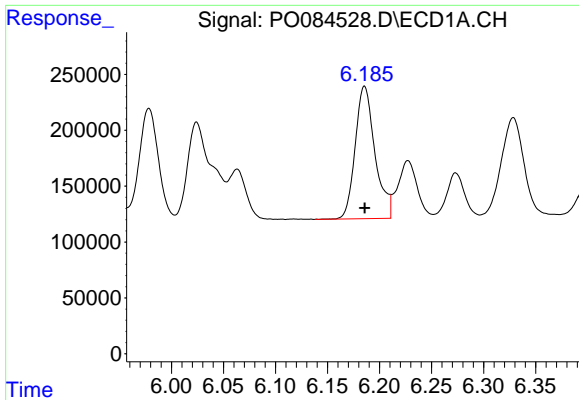
#6 AR-1016-4

R.T.: 5.886 min
 Delta R.T.: 0.000 min
 Response: 1598706
 Conc: 538.68 ng/ml



#6 AR-1016-4

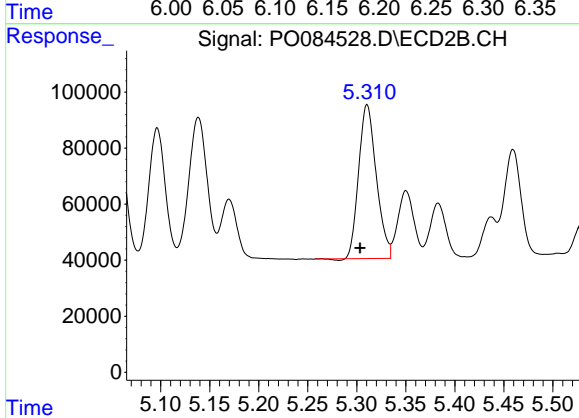
R.T.: 5.096 min
 Delta R.T.: 0.007 min
 Response: 552040
 Conc: 492.03 ng/ml



#7 AR-1016-5

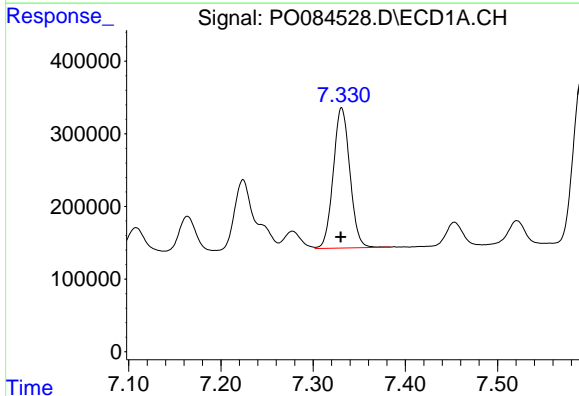
R.T.: 6.186 min
 Delta R.T.: 0.000 min
 Response: 1568799
 Conc: 543.36 ng/ml

Instrument :
 ECD_O
 ClientSampleId :
 AR1660CCC500



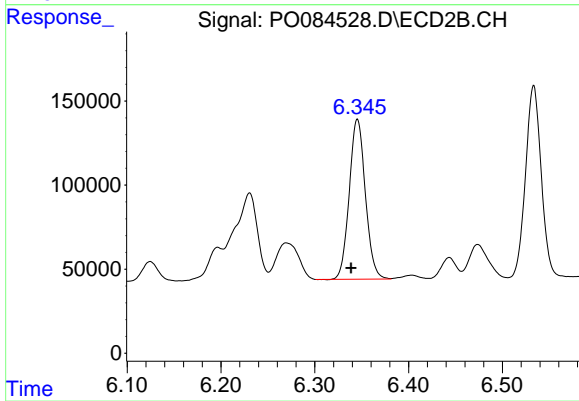
#7 AR-1016-5

R.T.: 5.311 min
 Delta R.T.: 0.007 min
 Response: 686686
 Conc: 487.33 ng/ml



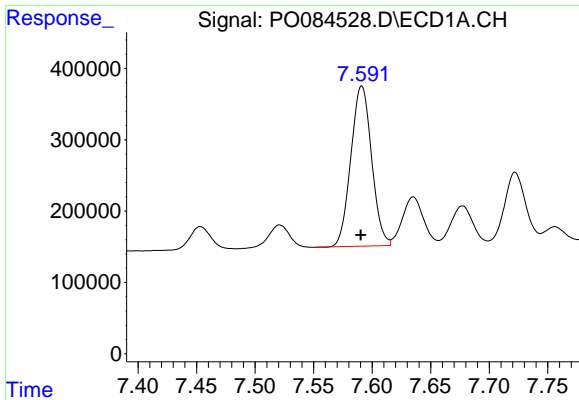
#31 AR-1260-1

R.T.: 7.331 min
 Delta R.T.: 0.001 min
 Response: 2416008
 Conc: 517.53 ng/ml



#31 AR-1260-1

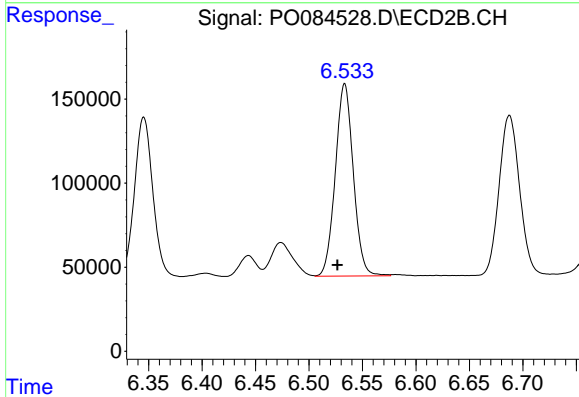
R.T.: 6.345 min
 Delta R.T.: 0.007 min
 Response: 1135769
 Conc: 491.54 ng/ml



#32 AR-1260-2

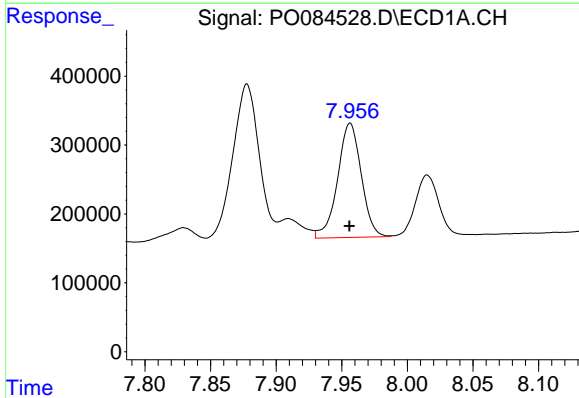
R.T.: 7.591 min
 Delta R.T.: 0.000 min
 Response: 2772296
 Conc: 534.56 ng/ml

Instrument :
 ECD_O
 ClientSampleId :
 AR1660CCC500



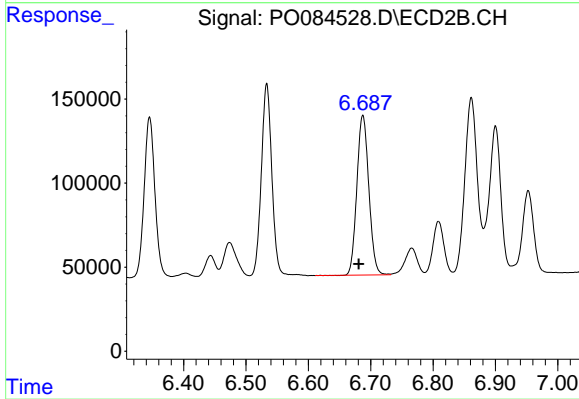
#32 AR-1260-2

R.T.: 6.533 min
 Delta R.T.: 0.007 min
 Response: 1341031
 Conc: 496.06 ng/ml



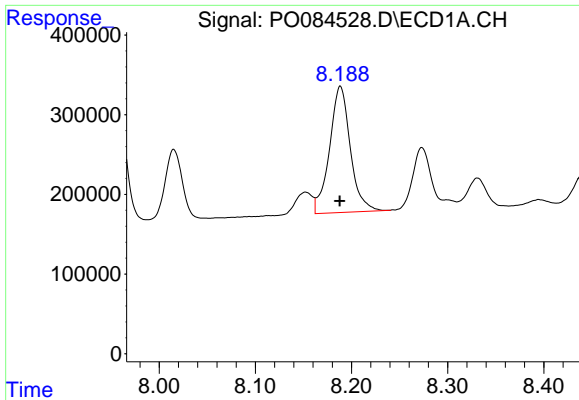
#33 AR-1260-3

R.T.: 7.956 min
 Delta R.T.: 0.000 min
 Response: 2080600
 Conc: 541.95 ng/ml



#33 AR-1260-3

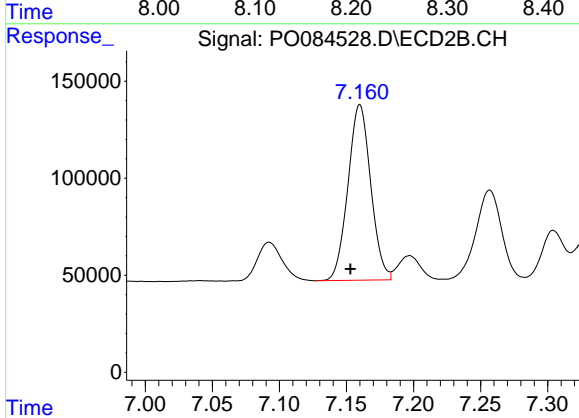
R.T.: 6.687 min
 Delta R.T.: 0.007 min
 Response: 1265955
 Conc: 499.44 ng/ml



#34 AR-1260-4

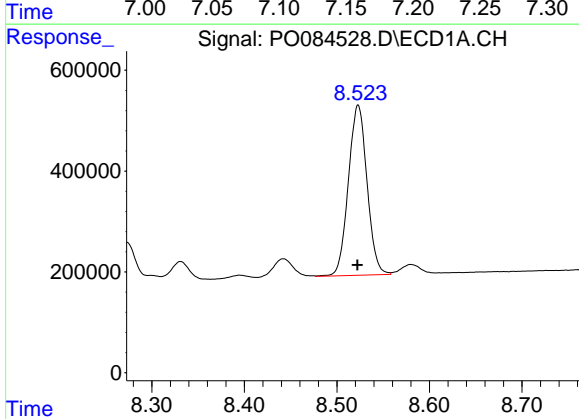
R.T.: 8.188 min
 Delta R.T.: 0.000 min
 Response: 2405026
 Conc: 550.28 ng/ml

Instrument :
 ECD_O
 ClientSampleId :
 AR1660CCC500



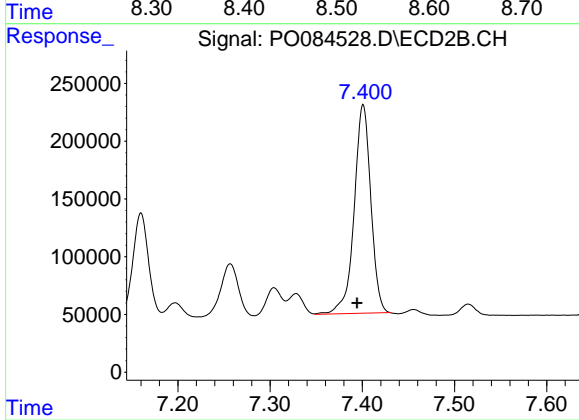
#34 AR-1260-4

R.T.: 7.160 min
 Delta R.T.: 0.007 min
 Response: 1067717
 Conc: 503.42 ng/ml



#35 AR-1260-5

R.T.: 8.523 min
 Delta R.T.: 0.000 min
 Response: 4724452
 Conc: 540.45 ng/ml



#35 AR-1260-5

R.T.: 7.401 min
 Delta R.T.: 0.007 min
 Response: 2269672
 Conc: 491.46 ng/ml