

Data Path : Z:\pestpcbsrv\HPCHEM1\ECD_0\Data\P0020922\
 Data File : P0084551.D
 Signal(s) : Signal #1: ECD1A.CH Signal #2: ECD2B.CH
 Acq On : 09 Feb 2022 17:00
 Operator : YP\AJ
 Sample : PB142567BL
 Misc :
 ALS Vial : 20 Sample Multiplier: 1

Instrument :
 ECD_0
ClientSampleId :
 PB142567BL

Integration File signal 1: autoint1.e
 Integration File signal 2: autoint2.e
 Quant Time: Feb 10 07:30:45 2022
 Quant Method : Z:\pestpcbsrv\HPCHEM1\ECD_0\methods\P0020822.M
 Quant Title : GC EXTRACTABLES
 QLast Update : Thu Feb 10 07:10:18 2022
 Response via : Initial Calibration
 Integrator: ChemStation 6890 Scale Mode: Small noise peaks clipped

Volume Inj. : 2 µl
 Signal #1 Phase : ZB-MR1 Signal #2 Phase: ZB-MR2
 Signal #1 Info : 30Mx0.32mmx 0.50µ Signal #2 Info : 30M x 0.32mm x 0.25µm

Compound	RT#1	RT#2	Resp#1	Resp#2	ng/ml	ng/ml

System Monitoring Compounds						
1) SA Tetrachlo...	4.507	3.772	2402808	917700	21.132	19.974
2) SA Decachlor...	10.446	8.814	1801068	863480	22.486	23.056

Target Compounds

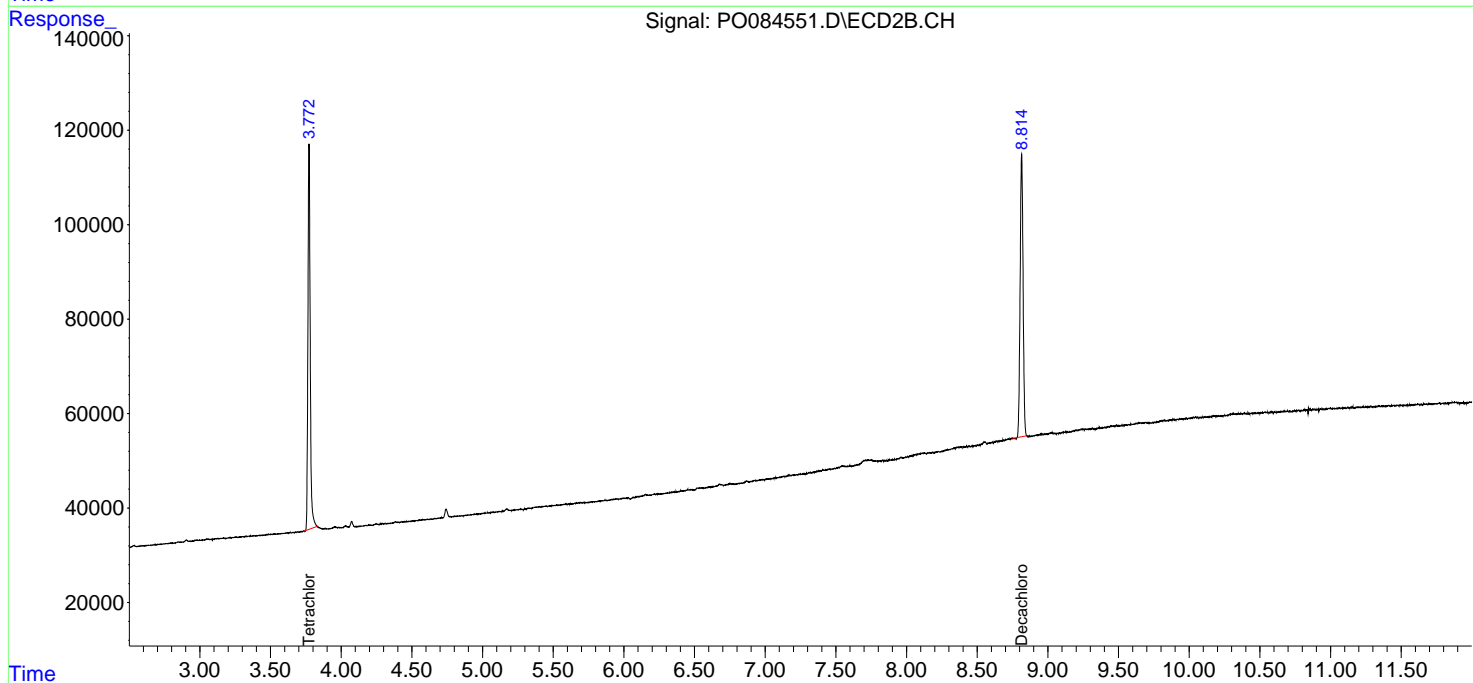
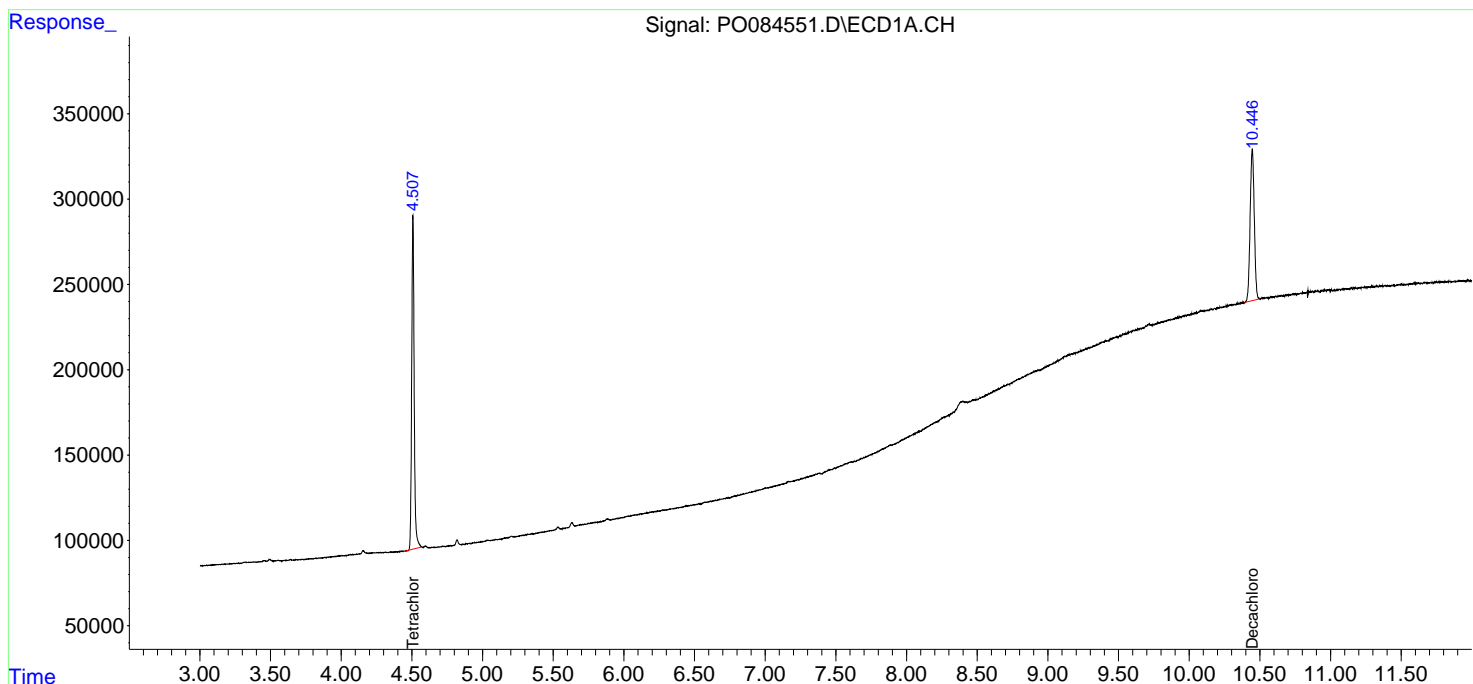
 (f)=RT Delta > 1/2 Window (#)=Amounts differ by > 25% (m)=manual int.

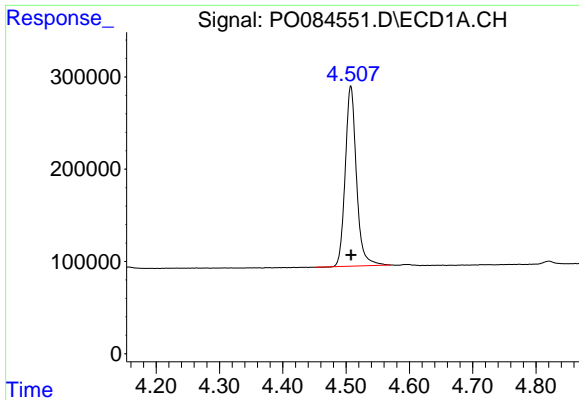
Data Path : Z:\pestpcbsrv\HPCHEM1\ECD_0\Data\P0020922\
 Data File : P0084551.D
 Signal(s) : Signal #1: ECD1A.CH Signal #2: ECD2B.CH
 Acq On : 09 Feb 2022 17:00
 Operator : YP\AJ
 Sample : PB142567BL
 Misc :
 ALS Vial : 20 Sample Multiplier: 1

Instrument :
 ECD_O
 ClientSampleId :
 PB142567BL

Integration File signal 1: autoint1.e
 Integration File signal 2: autoint2.e
 Quant Time: Feb 10 07:30:45 2022
 Quant Method : Z:\pestpcbsrv\HPCHEM1\ECD_0\methods\P0020822.M
 Quant Title : GC EXTRACTABLES
 QLast Update : Thu Feb 10 07:10:18 2022
 Response via : Initial Calibration
 Integrator: ChemStation 6890 Scale Mode: Small noise peaks clipped

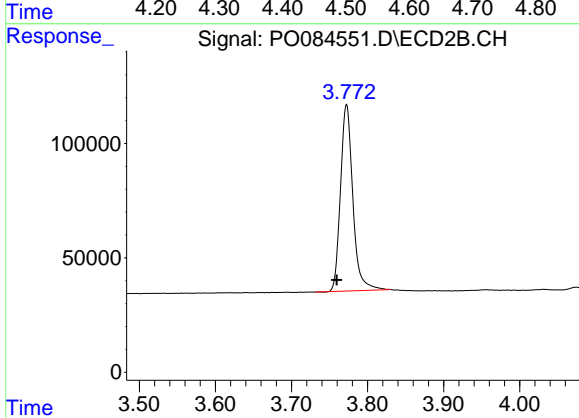
Volume Inj. : 2 µl
 Signal #1 Phase : ZB-MR1 Signal #2 Phase: ZB-MR2
 Signal #1 Info : 30Mx0.32mmx 0.50µm Signal #2 Info : 30M x 0.32mm x 0.25µm



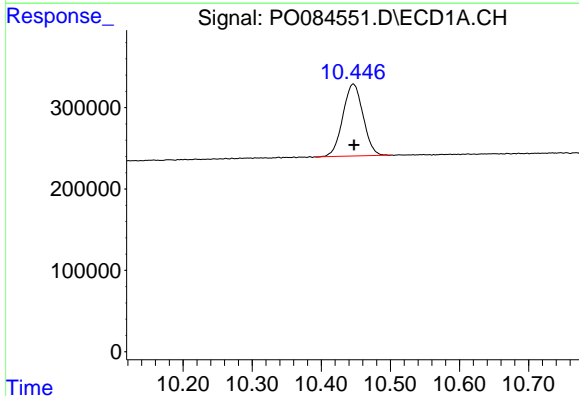


#1 Tetrachloro-m-xylene
 R.T.: 4.507 min
 Delta R.T.: 0.000 min
 Response: 2402808
 Conc: 21.13 ng/ml

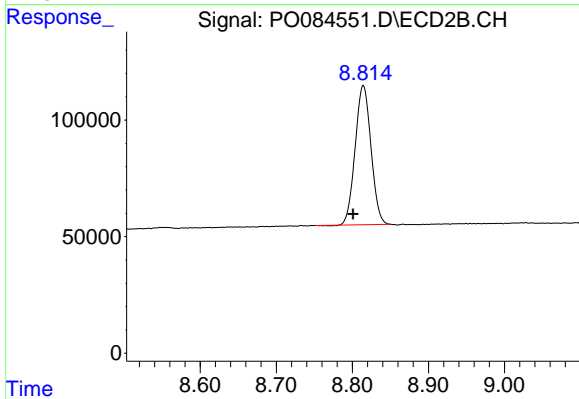
Instrument :
 ECD_O
 ClientSampleId :
 PB142567BL



#1 Tetrachloro-m-xylene
 R.T.: 3.772 min
 Delta R.T.: 0.013 min
 Response: 917700
 Conc: 19.97 ng/ml



#2 Decachlorobiphenyl
 R.T.: 10.446 min
 Delta R.T.: -0.001 min
 Response: 1801068
 Conc: 22.49 ng/ml



#2 Decachlorobiphenyl
 R.T.: 8.814 min
 Delta R.T.: 0.013 min
 Response: 863480
 Conc: 23.06 ng/ml