

Data Path : Z:\pestpcbsrv\HPCHEM1\ECD\_0\Data\P0020922\  
 Data File : P0084558.D  
 Signal(s) : Signal #1: ECD1A.CH Signal #2: ECD2B.CH  
 Acq On : 09 Feb 2022 19:39  
 Operator : YP\AJ  
 Sample : AR1660CCC500  
 Misc :  
 ALS Vial : 3 Sample Multiplier: 1

Instrument :  
 ECD\_0  
 ClientSampleId :  
 AR1660CCC500

Integration File signal 1: autoint1.e  
 Integration File signal 2: autoint2.e  
 Quant Time: Feb 21 07:49:47 2022  
 Quant Method : Z:\pestpcbsrv\HPCHEM1\ECD\_0\methods\P0020822.M  
 Quant Title : GC EXTRACTABLES  
 QLast Update : Thu Feb 10 07:10:18 2022  
 Response via : Initial Calibration  
 Integrator: ChemStation 6890 Scale Mode: Small noise peaks clipped

Volume Inj. : 2 µl  
 Signal #1 Phase : ZB-MR1 Signal #2 Phase: ZB-MR2  
 Signal #1 Info : 30Mx0.32mmx 0.50µ Signal #2 Info : 30M x 0.32mm x 0.25µm

Compound	RT#1	RT#2	Resp#1	Resp#2	ng/ml	ng/ml
-----						
System Monitoring Compounds						
1) SA Tetrachlo...	4.507	3.774	5589138	2164285	49.155	47.106
2) SA Decachlor...	10.444	8.816	3997758	1705586	49.912	45.541
Target Compounds						
3) L1 AR-1016-1	5.698	4.867	2052325	778455	512.796	455.051
4) L1 AR-1016-2	5.721	4.886	2986951	1110384	508.079	456.708
5) L1 AR-1016-3	5.785	5.062	1856938	612056	509.432	464.979
6) L1 AR-1016-4	5.885	5.104	1520693	519916	512.396	463.400
7) L1 AR-1016-5	6.185	5.318	1474158	666906	510.577	473.296
31) L7 AR-1260-1	7.330	6.352	2247224	1053140	481.374	455.781
32) L7 AR-1260-2	7.590	6.540	2579502	1248335	497.386	461.772
33) L7 AR-1260-3	7.956	6.694	1911344	1180634	497.861	465.781
34) L7 AR-1260-4	8.187	7.166	2176928	989914	498.095	466.740
35) L7 AR-1260-5	8.522	7.407	4381403	2222135	501.203	481.170

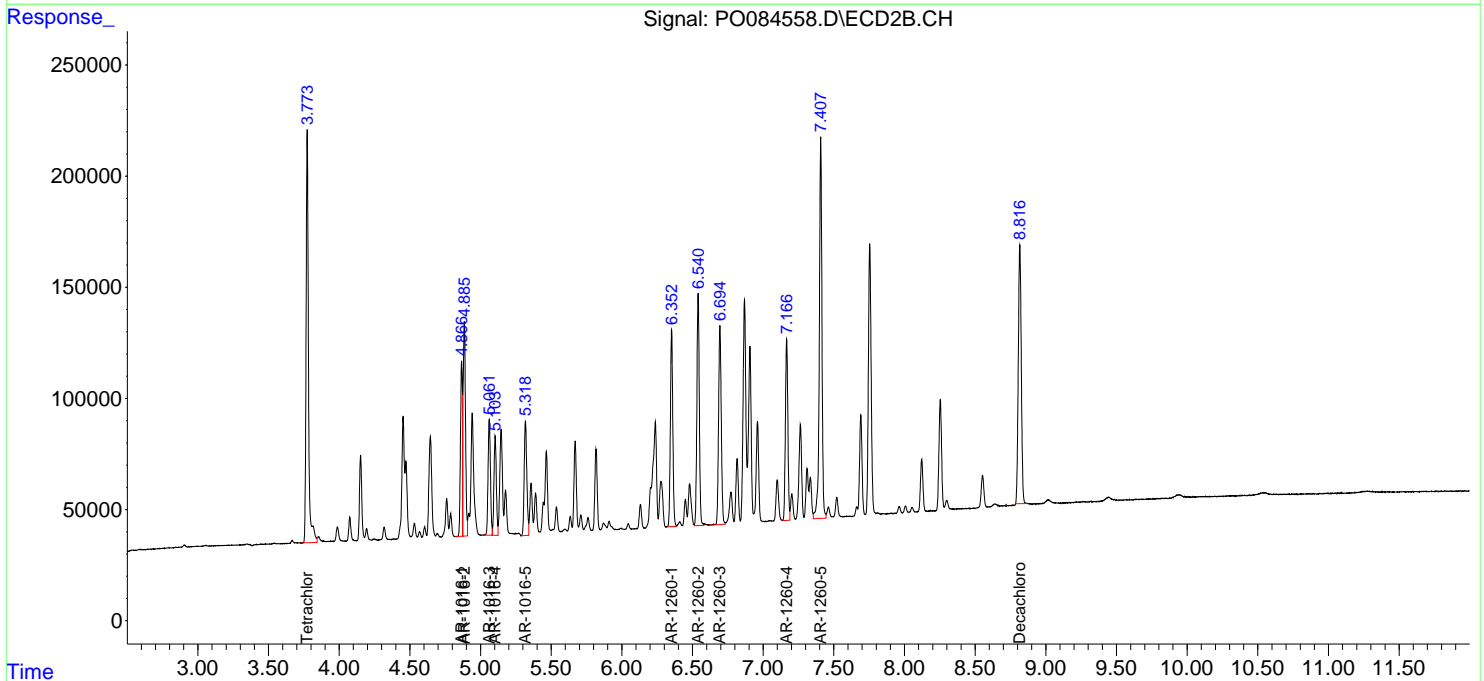
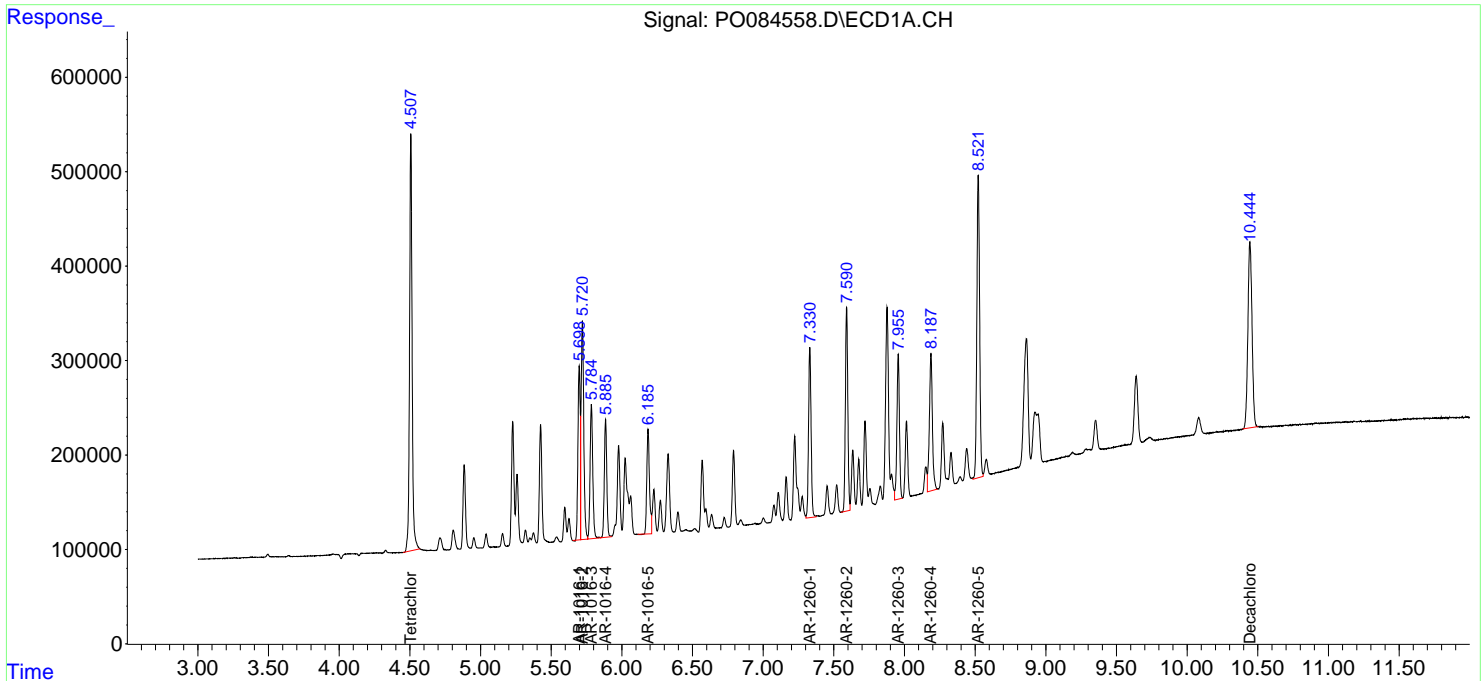
(f)=RT Delta > 1/2 Window (#)=Amounts differ by > 25% (m)=manual int.

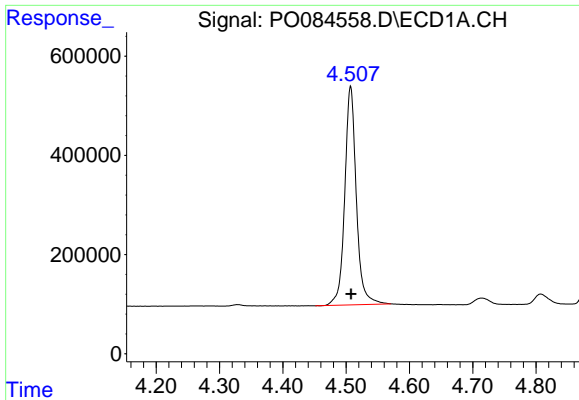
Data Path : Z:\pestpcbsrv\HPCHEM1\ECD\_O\Data\P0020922\  
 Data File : P0084558.D  
 Signal(s) : Signal #1: ECD1A.CH Signal #2: ECD2B.CH  
 Acq On : 09 Feb 2022 19:39  
 Operator : YP\AJ  
 Sample : AR1660CCC500  
 Misc :  
 ALS Vial : 3 Sample Multiplier: 1

Instrument :  
 ECD\_O  
 ClientSampleId :  
 AR1660CCC500

Integration File signal 1: autoint1.e  
 Integration File signal 2: autoint2.e  
 Quant Time: Feb 21 07:49:47 2022  
 Quant Method : Z:\pestpcbsrv\HPCHEM1\ECD\_O\methods\P0020822.M  
 Quant Title : GC EXTRACTABLES  
 QLast Update : Thu Feb 10 07:10:18 2022  
 Response via : Initial Calibration  
 Integrator: ChemStation 6890 Scale Mode: Small noise peaks clipped

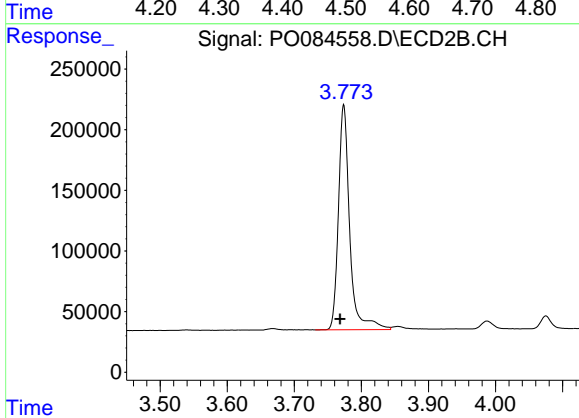
Volume Inj. : 2 µl  
 Signal #1 Phase : ZB-MR1 Signal #2 Phase: ZB-MR2  
 Signal #1 Info : 30Mx0.32mmx 0.50µ Signal #2 Info : 30M x 0.32mm x 0.25µm



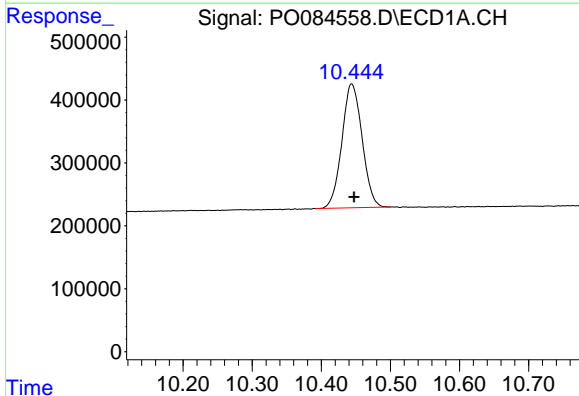


#1 Tetrachloro-m-xylene  
 R.T.: 4.507 min  
 Delta R.T.: 0.000 min  
 Response: 5589138  
 Conc: 49.15 ng/ml

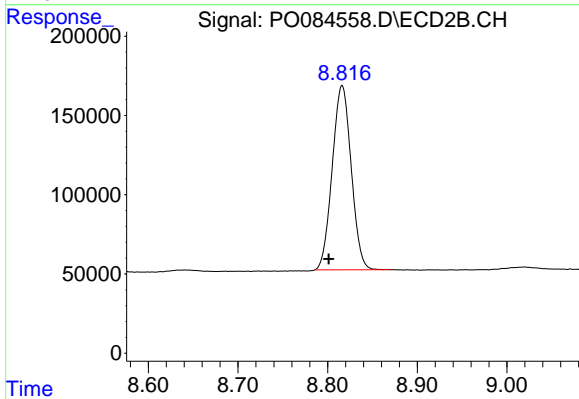
Instrument :  
 ECD\_O  
 ClientSampleId :  
 AR1660CCC500



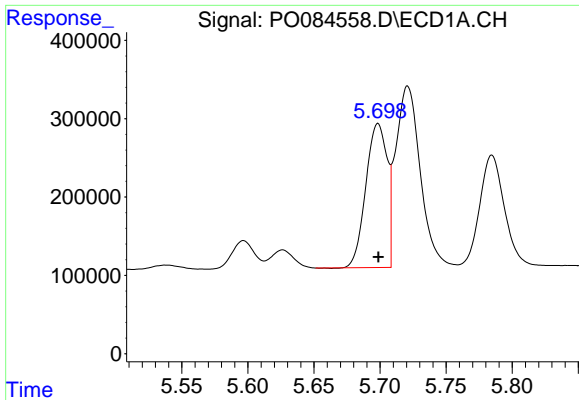
#1 Tetrachloro-m-xylene  
 R.T.: 3.774 min  
 Delta R.T.: 0.006 min  
 Response: 2164285  
 Conc: 47.11 ng/ml



#2 Decachlorobiphenyl  
 R.T.: 10.444 min  
 Delta R.T.: -0.003 min  
 Response: 3997758  
 Conc: 49.91 ng/ml



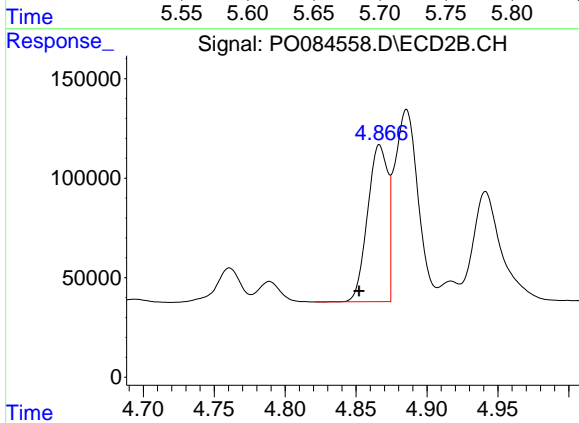
#2 Decachlorobiphenyl  
 R.T.: 8.816 min  
 Delta R.T.: 0.015 min  
 Response: 1705586  
 Conc: 45.54 ng/ml



#3 AR-1016-1

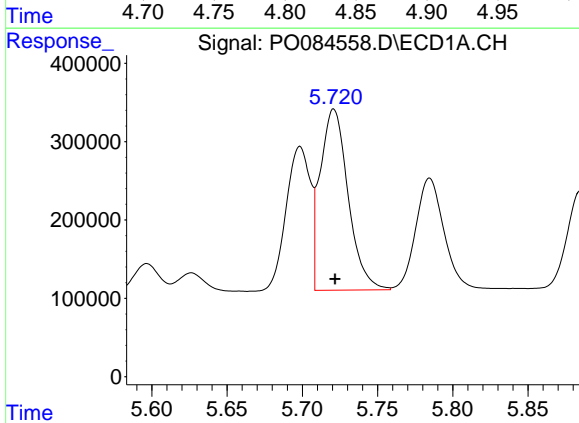
R.T.: 5.698 min  
 Delta R.T.: 0.000 min  
 Response: 2052325  
 Conc: 512.80 ng/ml

Instrument :  
 ECD\_O  
 ClientSampleId :  
 AR1660CCC500



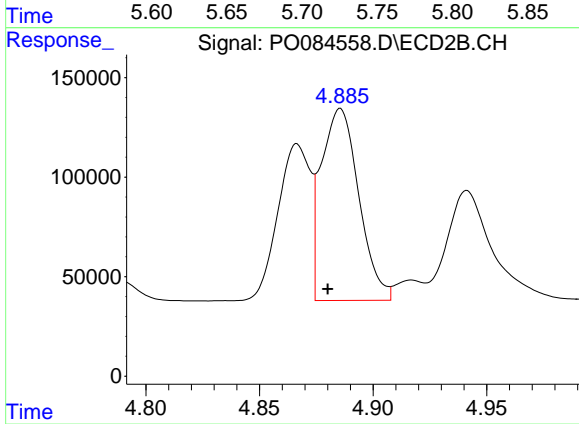
#3 AR-1016-1

R.T.: 4.867 min  
 Delta R.T.: 0.015 min  
 Response: 778455  
 Conc: 455.05 ng/ml



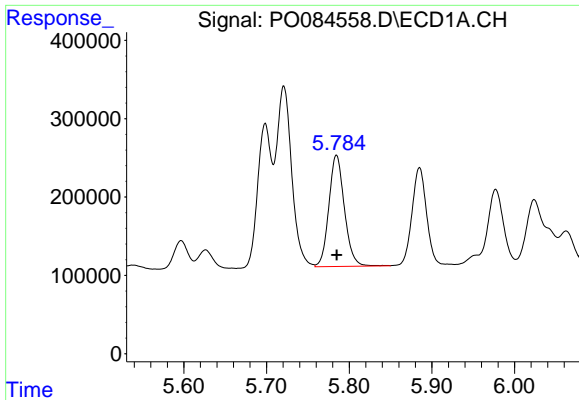
#4 AR-1016-2

R.T.: 5.721 min  
 Delta R.T.: 0.000 min  
 Response: 2986951  
 Conc: 508.08 ng/ml



#4 AR-1016-2

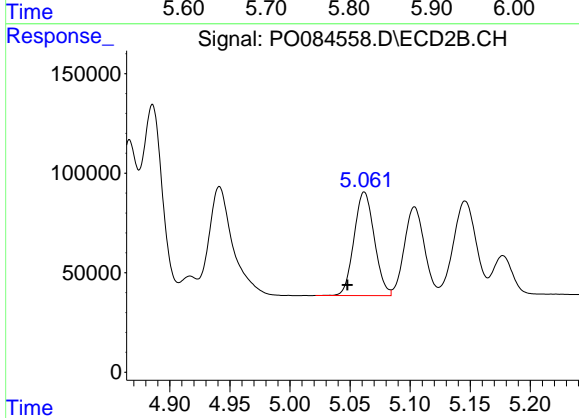
R.T.: 4.886 min  
 Delta R.T.: 0.006 min  
 Response: 1110384  
 Conc: 456.71 ng/ml



#5 AR-1016-3

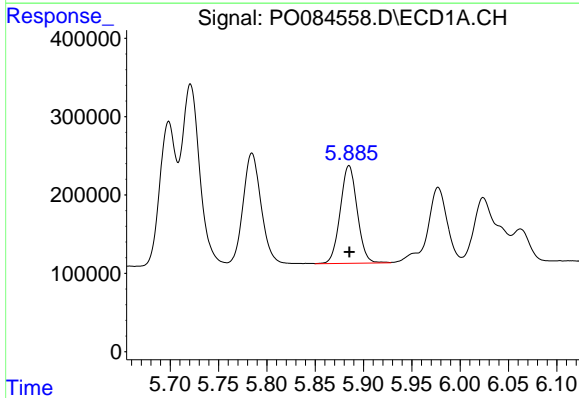
R.T.: 5.785 min  
 Delta R.T.: 0.000 min  
 Response: 1856938  
 Conc: 509.43 ng/ml

Instrument :  
 ECD\_O  
 ClientSampleId :  
 AR1660CCC500



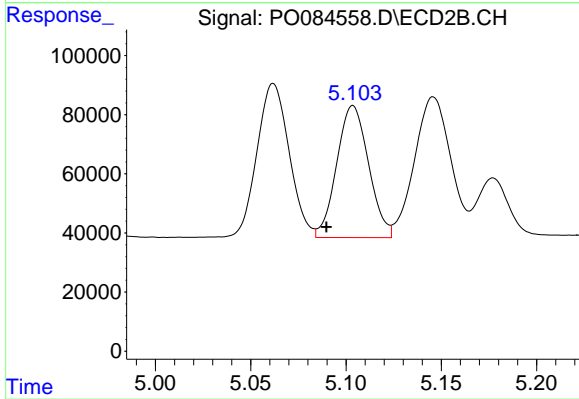
#5 AR-1016-3

R.T.: 5.062 min  
 Delta R.T.: 0.014 min  
 Response: 612056  
 Conc: 464.98 ng/ml



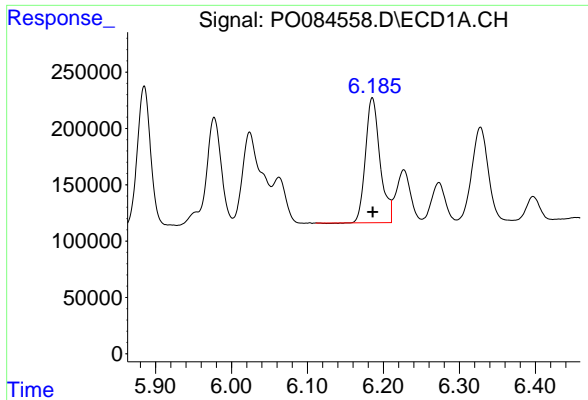
#6 AR-1016-4

R.T.: 5.885 min  
 Delta R.T.: 0.000 min  
 Response: 1520693  
 Conc: 512.40 ng/ml



#6 AR-1016-4

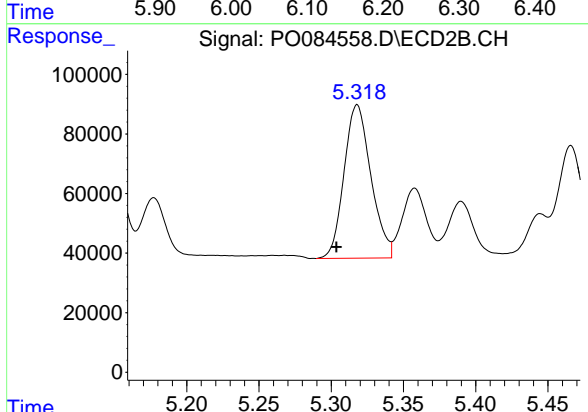
R.T.: 5.104 min  
 Delta R.T.: 0.014 min  
 Response: 519916  
 Conc: 463.40 ng/ml



#7 AR-1016-5

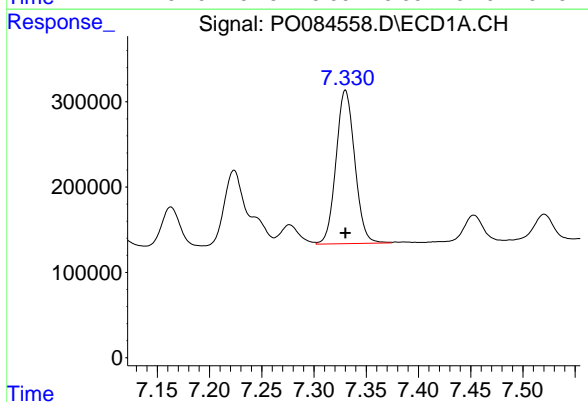
R.T.: 6.185 min  
 Delta R.T.: 0.000 min  
 Response: 1474158  
 Conc: 510.58 ng/ml

Instrument :  
 ECD\_O  
 ClientSampleId :  
 AR1660CCC500



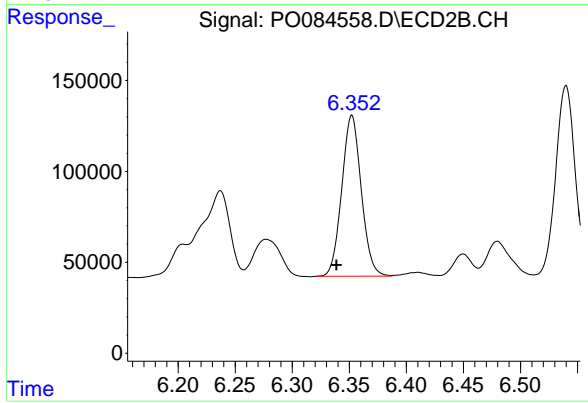
#7 AR-1016-5

R.T.: 5.318 min  
 Delta R.T.: 0.014 min  
 Response: 666906  
 Conc: 473.30 ng/ml



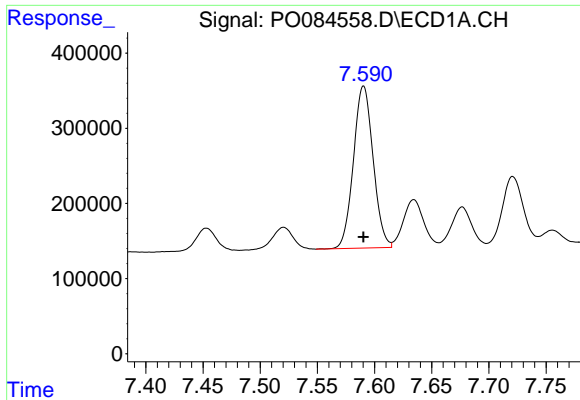
#31 AR-1260-1

R.T.: 7.330 min  
 Delta R.T.: 0.000 min  
 Response: 2247224  
 Conc: 481.37 ng/ml



#31 AR-1260-1

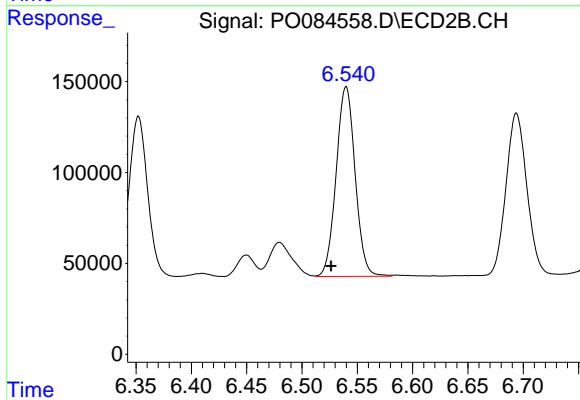
R.T.: 6.352 min  
 Delta R.T.: 0.014 min  
 Response: 1053140  
 Conc: 455.78 ng/ml



#32 AR-1260-2

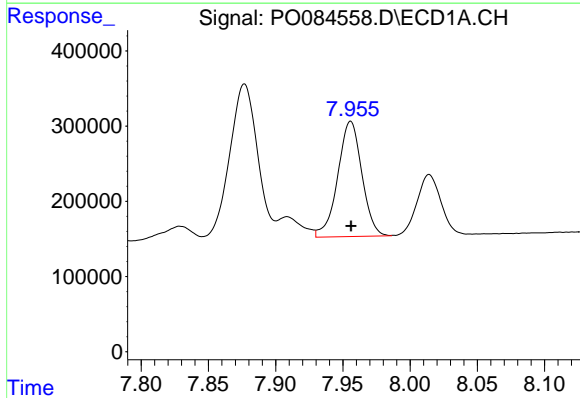
R.T.: 7.590 min  
 Delta R.T.: 0.000 min  
 Response: 2579502  
 Conc: 497.39 ng/ml

Instrument :  
 ECD\_O  
 ClientSampleId :  
 AR1660CCC500



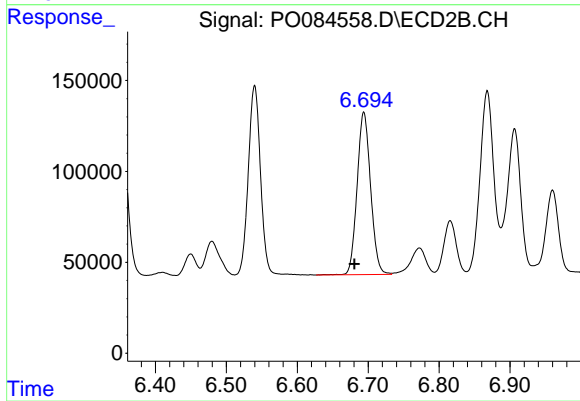
#32 AR-1260-2

R.T.: 6.540 min  
 Delta R.T.: 0.013 min  
 Response: 1248335  
 Conc: 461.77 ng/ml



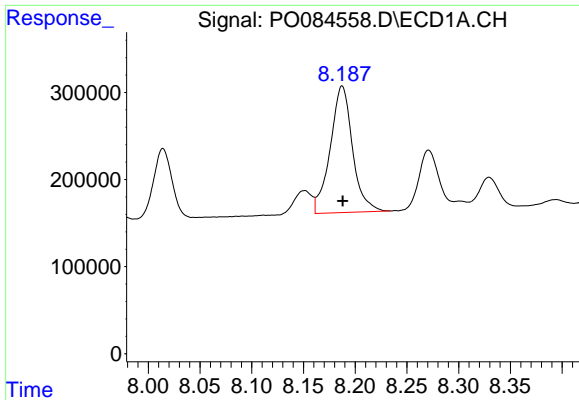
#33 AR-1260-3

R.T.: 7.956 min  
 Delta R.T.: 0.000 min  
 Response: 1911344  
 Conc: 497.86 ng/ml



#33 AR-1260-3

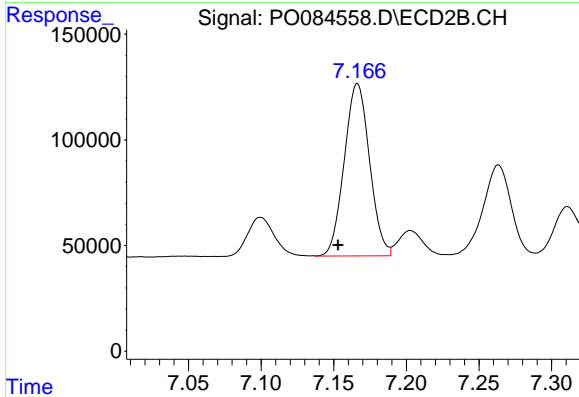
R.T.: 6.694 min  
 Delta R.T.: 0.013 min  
 Response: 1180634  
 Conc: 465.78 ng/ml



#34 AR-1260-4

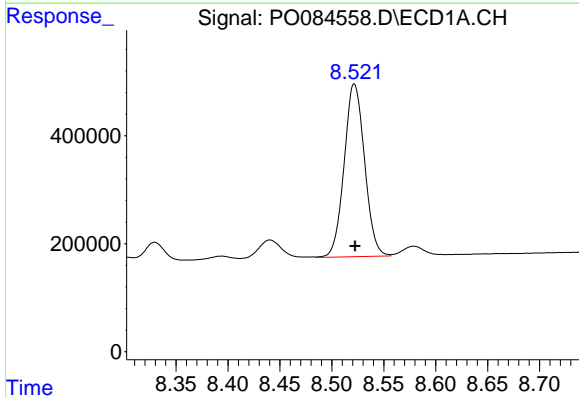
R.T.: 8.187 min  
 Delta R.T.: 0.000 min  
 Response: 2176928  
 Conc: 498.09 ng/ml

Instrument :  
 ECD\_O  
 ClientSampleId :  
 AR1660CCC500



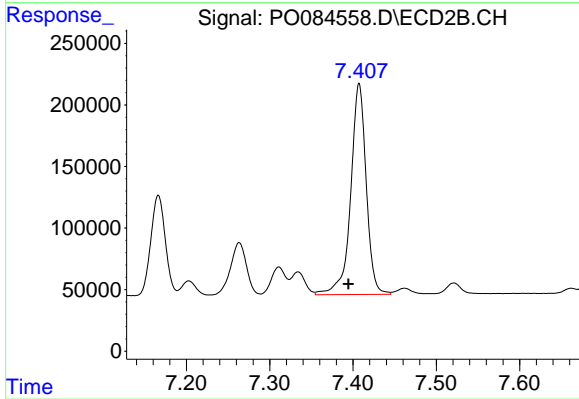
#34 AR-1260-4

R.T.: 7.166 min  
 Delta R.T.: 0.013 min  
 Response: 989914  
 Conc: 466.74 ng/ml



#35 AR-1260-5

R.T.: 8.522 min  
 Delta R.T.: 0.000 min  
 Response: 4381403  
 Conc: 501.20 ng/ml



#35 AR-1260-5

R.T.: 7.407 min  
 Delta R.T.: 0.013 min  
 Response: 2222135  
 Conc: 481.17 ng/ml