

Data Path : Z:\pestpcbsrv\HPCHEM1\ECD_0\Data\P0020923\
 Data File : P0092445.D
 Signal(s) : Signal #1: ECD1A.ch Signal #2: ECD2B.ch
 Acq On : 09 Feb 2023 15:16
 Operator : YP/AJ
 Sample : 01502-01 10X
 Misc :
 ALS Vial : 15 Sample Multiplier: 1

Instrument :
 ECD_0
 ClientSampleId :

Integration File signal 1: autoint1.e
 Integration File signal 2: autoint2.e
 Quant Time: Feb 09 21:42:15 2023
 Quant Method : Z:\pestpcbsrv\HPCHEM1\ECD_0\methods\P0012323.M
 Quant Title : GC EXTRACTABLES
 QLast Update : Tue Jan 24 04:40:59 2023
 Response via : Initial Calibration
 Integrator: ChemStation

Volume Inj. : 2 µl
 Signal #1 Phase : ZB-MR1 Signal #2 Phase: ZB-MR2
 Signal #1 Info : 30Mx0.32mmx 0.50µ Signal #2 Info : 30M x 0.32mm x 0.25µm

Compound	RT#1	RT#2	Resp#1	Resp#2	ng/ml	ng/ml
System Monitoring Compounds						
1) SA Tetrachlo...	4.447	3.664	5084143	2010510	1.756	1.432
2) SA Decachlor...	10.369	8.704	5130081	1859339	2.486	1.647 #
Target Compounds						
3) L1 AR-1016-1	5.633	4.751	708036	340677	7.742	7.412
4) L1 AR-1016-2	5.662	4.751	968064	340677	7.229	5.195 #
5) L1 AR-1016-3	5.662f	4.989f	968064	6725610	11.249	190.231 #
6) L1 AR-1016-4	0.000	4.989	0	6725610	N.D.	216.209 #
7) L1 AR-1016-5	6.120	5.202	8506829	3598913	118.397	90.502
12) L3 AR-1232-2	0.000	4.751	0	340677	N.D.	11.113 #
13) L3 AR-1232-3	5.662	4.989f	968064	6725610	15.812	417.750 #
14) L3 AR-1232-4	0.000	5.029	0	1627414	N.D.	99.637 #
15) L3 AR-1232-5	5.913	5.202	14740819	3598913	596.444	201.205 #
16) L4 AR-1242-1	5.633	4.751	708036	340677	9.079	8.735
17) L4 AR-1242-2	5.662	4.751	968064	340677	8.600	6.273 #
18) L4 AR-1242-3	5.662f	4.989f	968064	6725610	13.336	230.929 #
19) L4 AR-1242-4	0.000	5.029	0	1627414	N.D.	50.594 #
20) L4 AR-1242-5	6.575	5.522	5965765	995197	106.871	27.490 #
21) L5 AR-1248-1	5.633	4.751	708036	340677	12.198	11.694
22) L5 AR-1248-2	5.913	4.989	14740819	6725610	161.307	149.070
23) L5 AR-1248-3	6.120	5.029	8506829	1627414	86.739	34.893 #
24) L5 AR-1248-4	6.532	5.202	8963230	3598913	91.547	66.981 #
25) L5 AR-1248-5	6.575	5.596	5965765	1326622	63.277	28.022 #
26) L6 AR-1254-1	6.505	5.522	22120039	995197	199.792	12.696 #
27) L6 AR-1254-2	6.729	5.705	30993421	11779836	190.665	170.251
28) L6 AR-1254-3	7.103	6.110	24748882	14342274	150.057	134.373
29) L6 AR-1254-4	7.395	6.340	15397392	6982733	140.763	118.564
30) L6 AR-1254-5	7.824	6.760	17903580	9639963	127.247	105.916
31) L7 AR-1260-1	7.271	6.241	12055113	7292666	91.496	96.541
32) L7 AR-1260-2	7.535	6.430	11146948	5341885	75.172	60.971
33) L7 AR-1260-3	7.884	6.583	2085789	5384957	18.415	62.118 #
34) L7 AR-1260-4	8.118	7.059	5014140	526681	40.448	7.865 #
35) L7 AR-1260-5	8.467	7.279	1944943	707951	8.759	4.975 #
36) L8 AR-1262-1	7.824	6.760	17903580	9639963	165.697	207.714 #
37) L8 AR-1262-2	8.467	7.279	1944943	707951	8.147	4.798 #
38) L8 AR-1262-3	8.805	0.000	1070931	0	6.335	N.D. #
39) L8 AR-1262-4	0.000	7.649	0	794084	N.D.	7.248 #
41) L9 AR-1268-1	8.805	0.000	1070931	0	3.385	N.D. #
42) L9 AR-1268-2	0.000	7.649	0	794084	N.D.	4.798 #

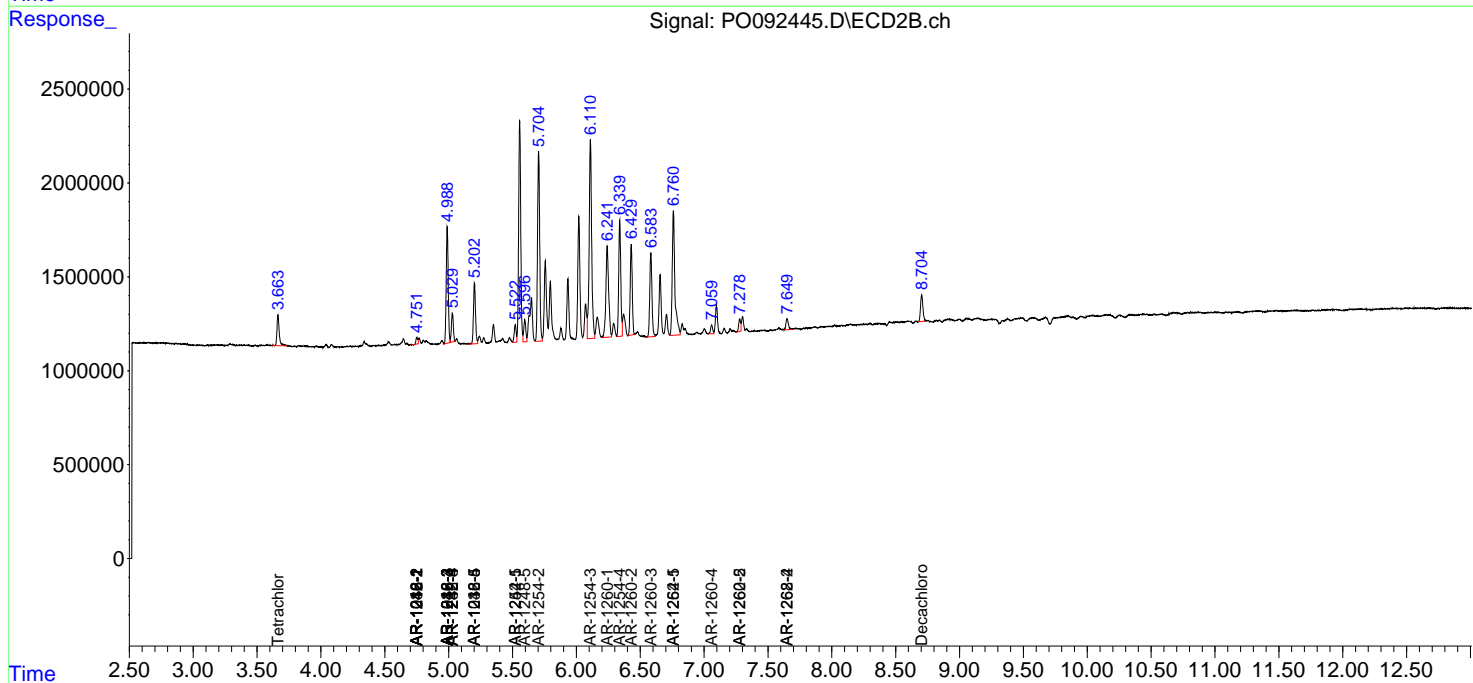
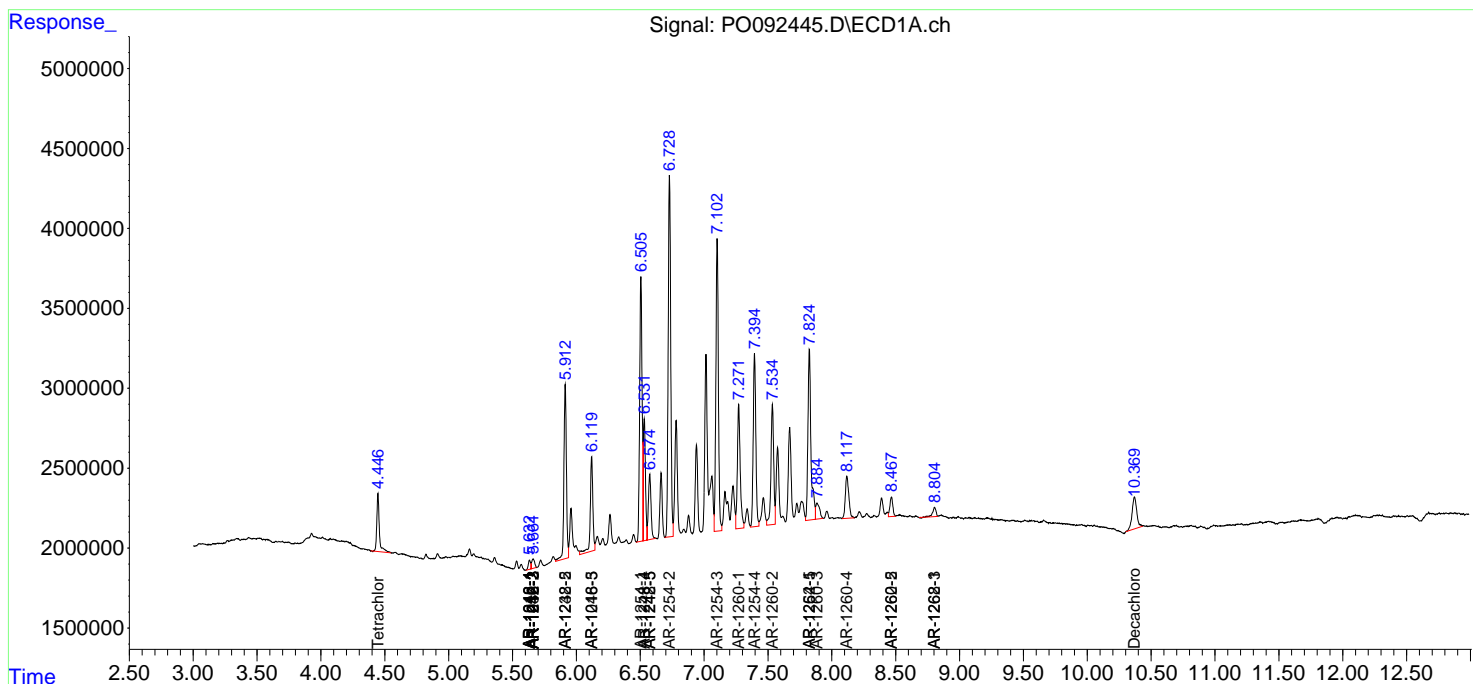
(f)=RT Delta > 1/2 Window (#)=Amounts differ by > 25% (m)=manual int.

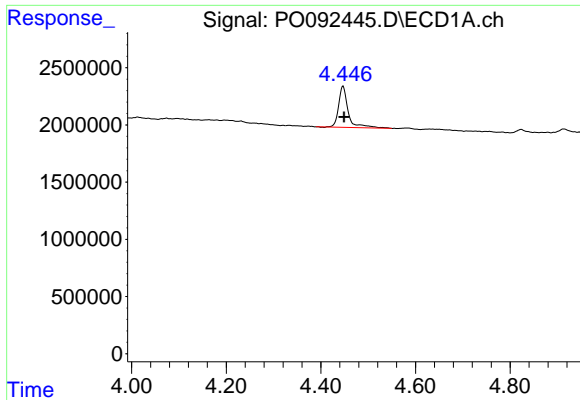
Data Path : Z:\pestpcbsrv\HPCHEM1\ECD_O\Data\PO020923\
 Data File : PO092445.D
 Signal(s) : Signal #1: ECD1A.ch Signal #2: ECD2B.ch
 Acq On : 09 Feb 2023 15:16
 Operator : YP/AJ
 Sample : 01502-01 10X
 Misc :
 ALS Vial : 15 Sample Multiplier: 1

Instrument :
 ECD_O
 ClientSampleId :

Integration File signal 1: autoint1.e
 Integration File signal 2: autoint2.e
 Quant Time: Feb 09 21:42:15 2023
 Quant Method : Z:\pestpcbsrv\HPCHEM1\ECD_O\methods\PO012323.M
 Quant Title : GC EXTRACTABLES
 QLast Update : Tue Jan 24 04:40:59 2023
 Response via : Initial Calibration
 Integrator: ChemStation

Volume Inj. : 2 µl
 Signal #1 Phase : ZB-MR1 Signal #2 Phase: ZB-MR2
 Signal #1 Info : 30Mx0.32mmx 0.50µ Signal #2 Info : 30M x 0.32mm x 0.25µm

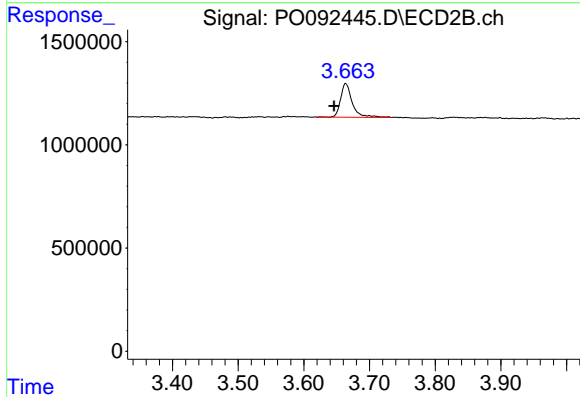




#1 Tetrachloro-m-xylene

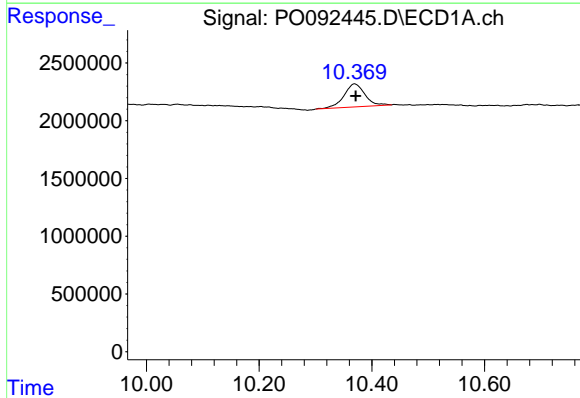
R.T.: 4.447 min
 Delta R.T.: -0.002 min
 Response: 5084143
 Conc: 1.76 ng/ml

Instrument :
 ECD_O
 ClientSampleId :



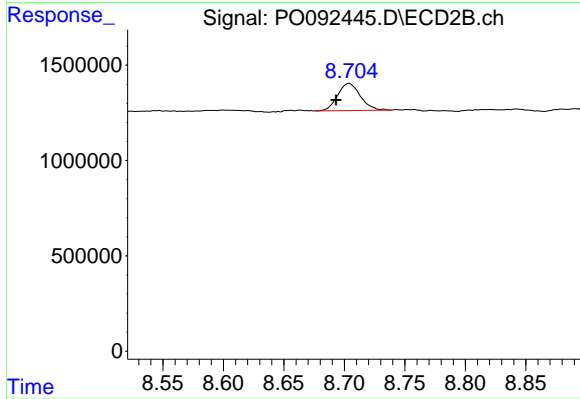
#1 Tetrachloro-m-xylene

R.T.: 3.664 min
 Delta R.T.: 0.018 min
 Response: 2010510
 Conc: 1.43 ng/ml



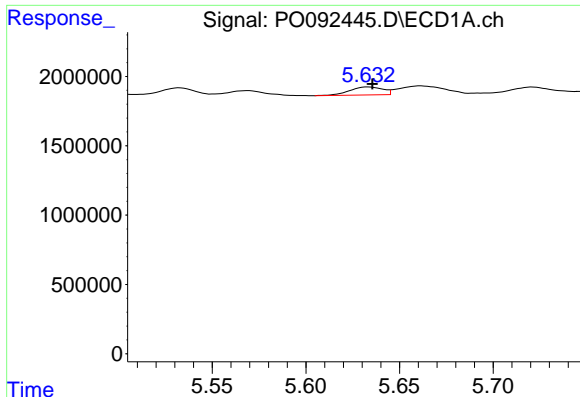
#2 Decachlorobiphenyl

R.T.: 10.369 min
 Delta R.T.: -0.002 min
 Response: 5130081
 Conc: 2.49 ng/ml



#2 Decachlorobiphenyl

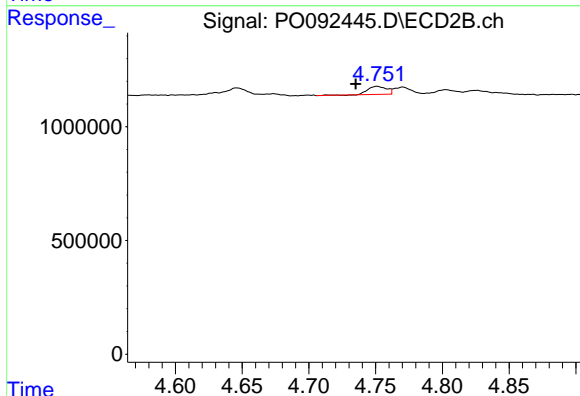
R.T.: 8.704 min
 Delta R.T.: 0.011 min
 Response: 1859339
 Conc: 1.65 ng/ml



#3 AR-1016-1

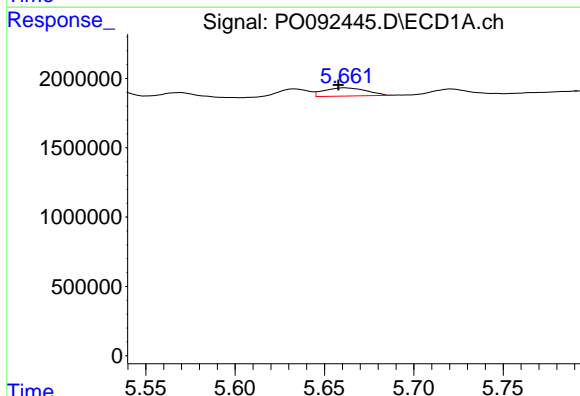
R.T.: 5.633 min
 Delta R.T.: -0.002 min
 Response: 708036
 Conc: 7.74 ng/ml

Instrument :
 ECD_O
 ClientSampleId :



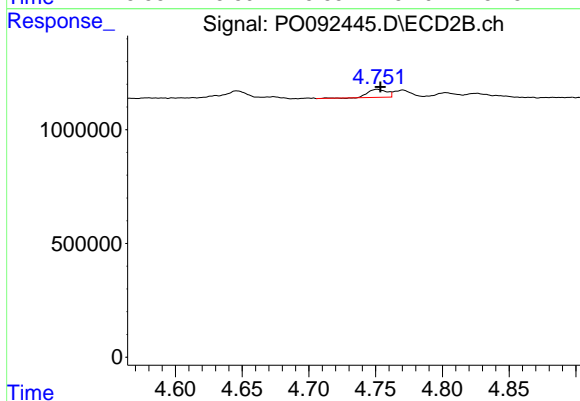
#3 AR-1016-1

R.T.: 4.751 min
 Delta R.T.: 0.016 min
 Response: 340677
 Conc: 7.41 ng/ml



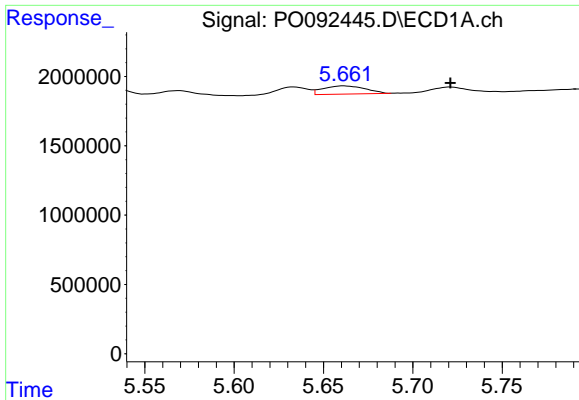
#4 AR-1016-2

R.T.: 5.662 min
 Delta R.T.: 0.004 min
 Response: 968064
 Conc: 7.23 ng/ml



#4 AR-1016-2

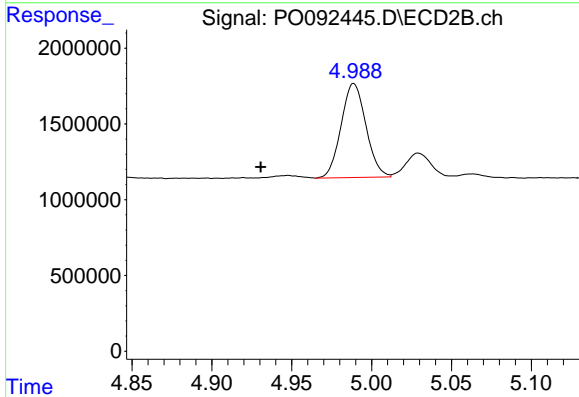
R.T.: 4.751 min
 Delta R.T.: -0.002 min
 Response: 340677
 Conc: 5.20 ng/ml



#5 AR-1016-3

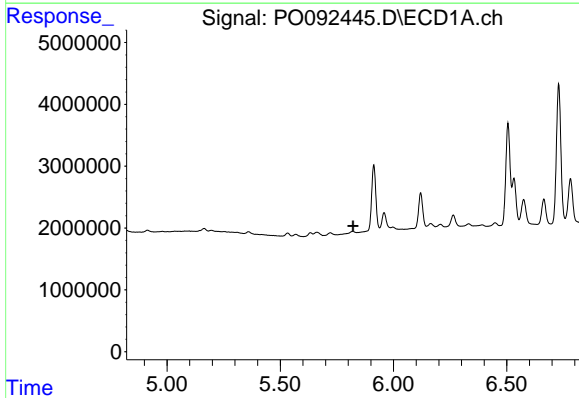
R.T.: 5.662 min
 Delta R.T.: -0.059 min
 Response: 968064
 Conc: 11.25 ng/ml

Instrument :
 ECD_O
 ClientSampleId :



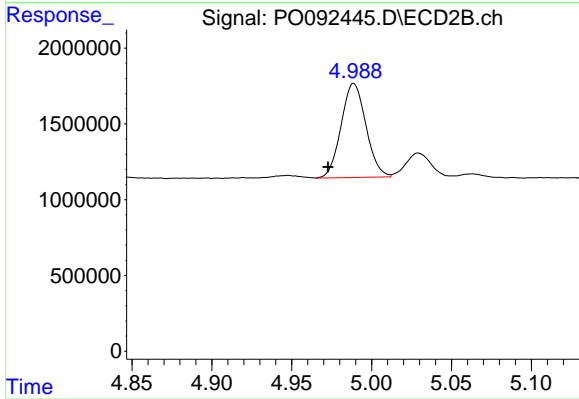
#5 AR-1016-3

R.T.: 4.989 min
 Delta R.T.: 0.058 min
 Response: 6725610
 Conc: 190.23 ng/ml



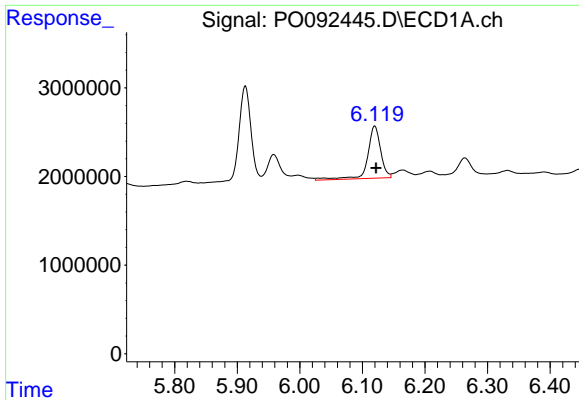
#6 AR-1016-4

R.T.: 0.000 min
 Exp R.T. : 5.821 min
 Response: 0
 Conc: N.D.



#6 AR-1016-4

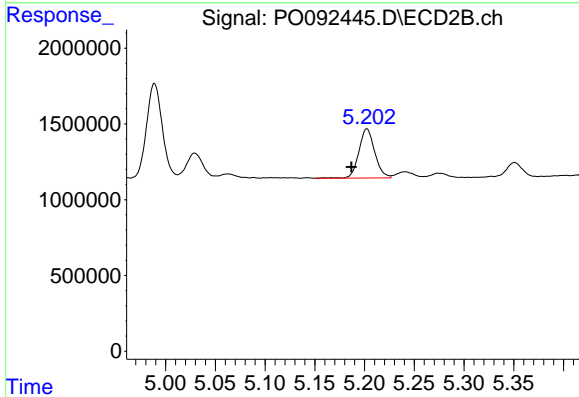
R.T.: 4.989 min
 Delta R.T.: 0.016 min
 Response: 6725610
 Conc: 216.21 ng/ml



#7 AR-1016-5

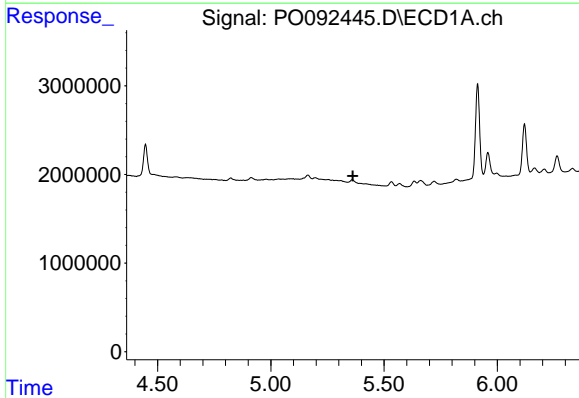
R.T.: 6.120 min
 Delta R.T.: -0.002 min
 Response: 8506829
 Conc: 118.40 ng/ml

Instrument :
 ECD_O
 ClientSampleId :



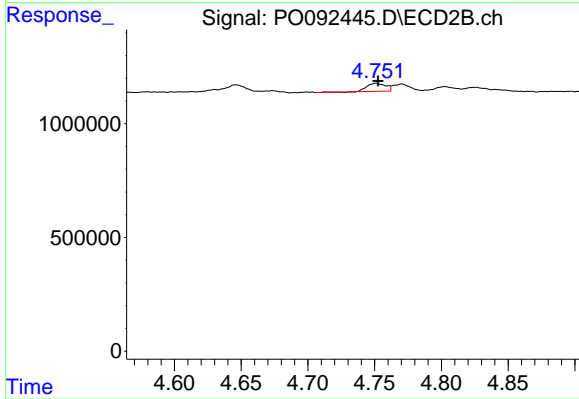
#7 AR-1016-5

R.T.: 5.202 min
 Delta R.T.: 0.015 min
 Response: 3598913
 Conc: 90.50 ng/ml



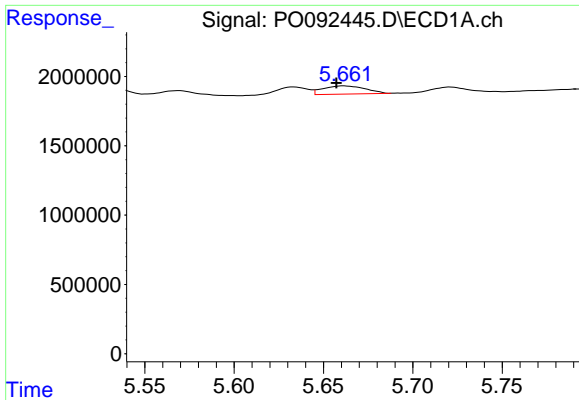
#12 AR-1232-2

R.T.: 0.000 min
 Exp R.T. : 5.362 min
 Response: 0
 Conc: N.D.



#12 AR-1232-2

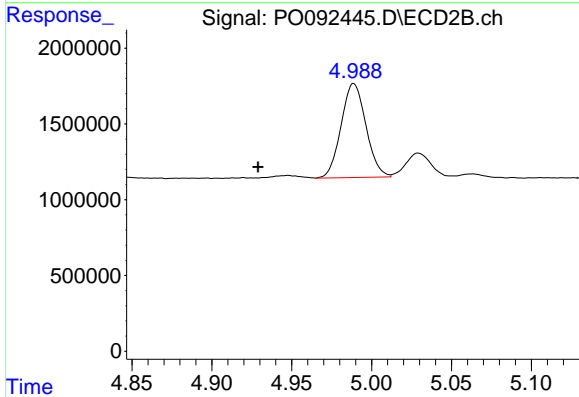
R.T.: 4.751 min
 Delta R.T.: -0.002 min
 Response: 340677
 Conc: 11.11 ng/ml



#13 AR-1232-3

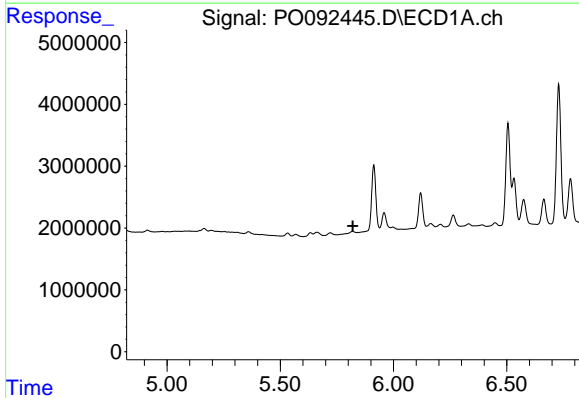
R.T.: 5.662 min
 Delta R.T.: 0.004 min
 Response: 968064
 Conc: 15.81 ng/ml

Instrument :
 ECD_O
 ClientSampleId :



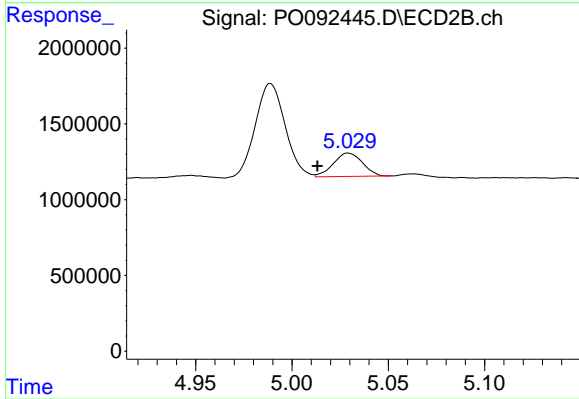
#13 AR-1232-3

R.T.: 4.989 min
 Delta R.T.: 0.060 min
 Response: 6725610
 Conc: 417.75 ng/ml



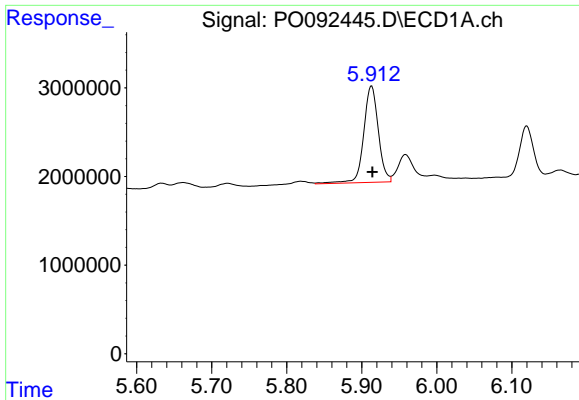
#14 AR-1232-4

R.T.: 0.000 min
 Exp R.T. : 5.820 min
 Response: 0
 Conc: N.D.



#14 AR-1232-4

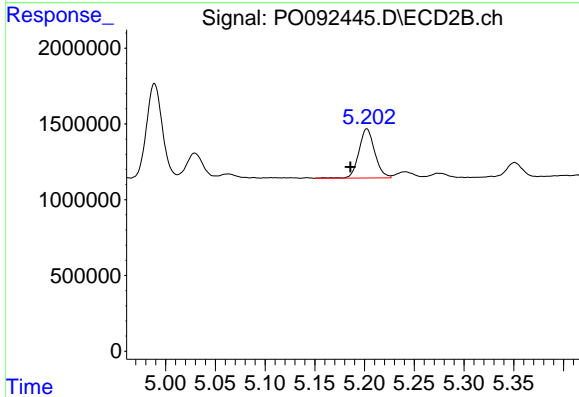
R.T.: 5.029 min
 Delta R.T.: 0.016 min
 Response: 1627414
 Conc: 99.64 ng/ml



#15 AR-1232-5

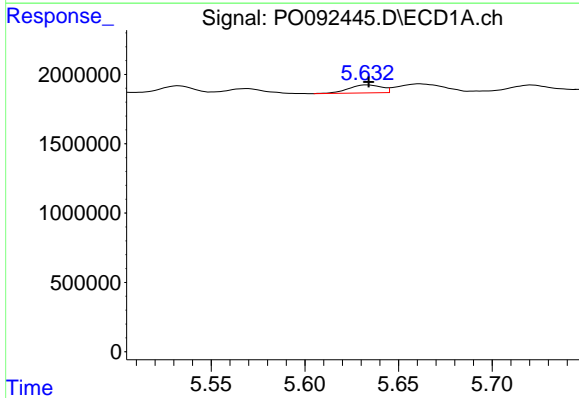
R.T.: 5.913 min
 Delta R.T.: -0.001 min
 Response: 14740819
 Conc: 596.44 ng/ml

Instrument :
 ECD_O
 ClientSampleId :



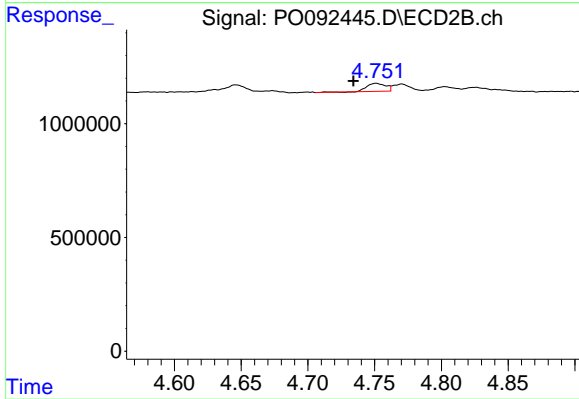
#15 AR-1232-5

R.T.: 5.202 min
 Delta R.T.: 0.017 min
 Response: 3598913
 Conc: 201.21 ng/ml



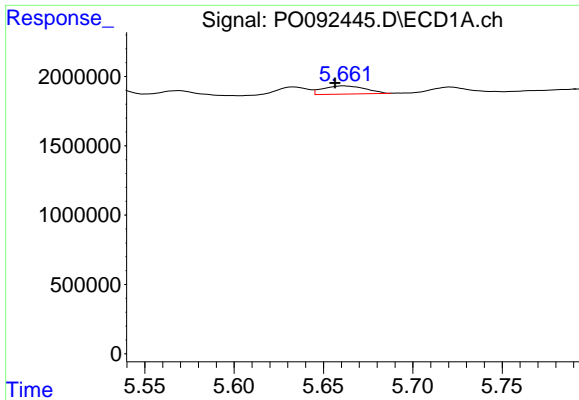
#16 AR-1242-1

R.T.: 5.633 min
 Delta R.T.: 0.000 min
 Response: 708036
 Conc: 9.08 ng/ml



#16 AR-1242-1

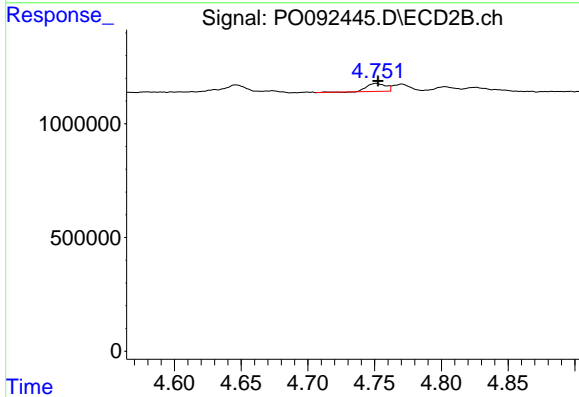
R.T.: 4.751 min
 Delta R.T.: 0.017 min
 Response: 340677
 Conc: 8.73 ng/ml



#17 AR-1242-2

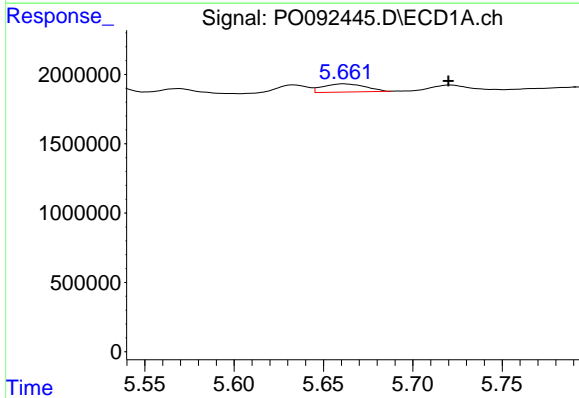
R.T.: 5.662 min
 Delta R.T.: 0.005 min
 Response: 968064
 Conc: 8.60 ng/ml

Instrument :
 ECD_O
 ClientSampleId :



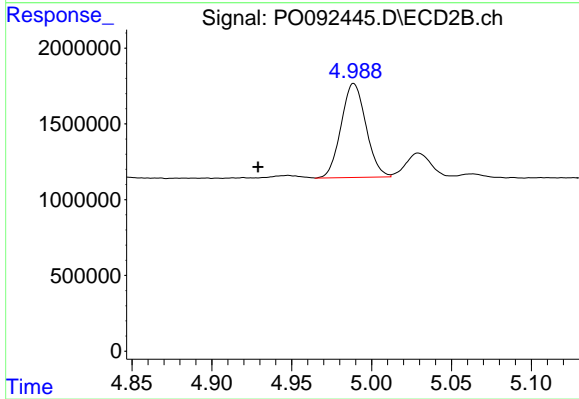
#17 AR-1242-2

R.T.: 4.751 min
 Delta R.T.: -0.001 min
 Response: 340677
 Conc: 6.27 ng/ml



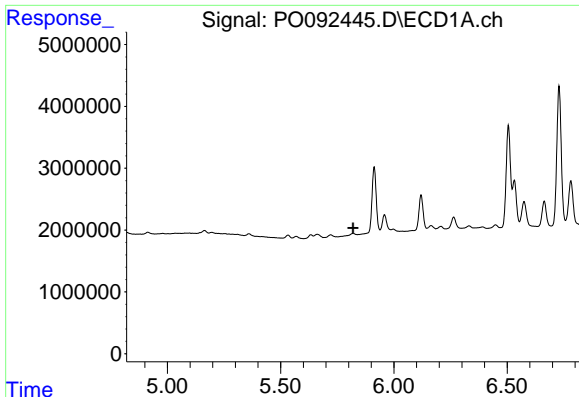
#18 AR-1242-3

R.T.: 5.662 min
 Delta R.T.: -0.058 min
 Response: 968064
 Conc: 13.34 ng/ml



#18 AR-1242-3

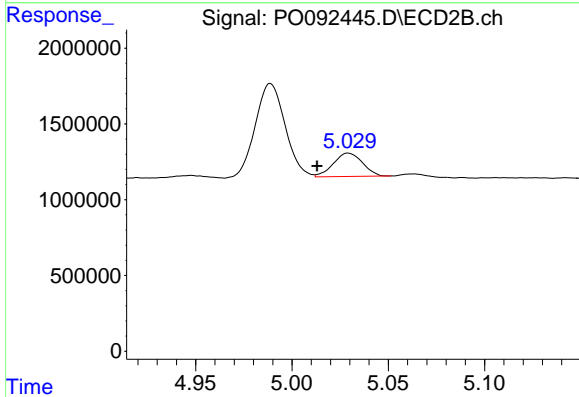
R.T.: 4.989 min
 Delta R.T.: 0.060 min
 Response: 6725610
 Conc: 230.93 ng/ml



#19 AR-1242-4

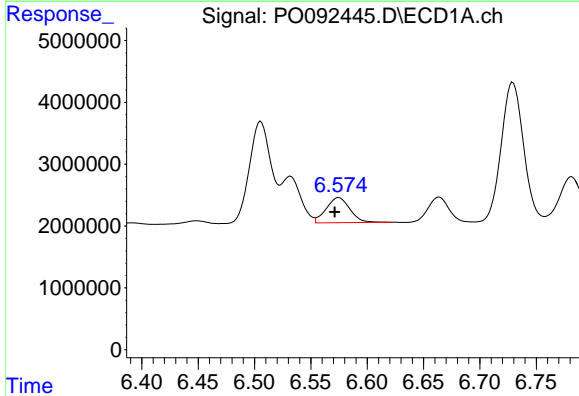
R.T.: 0.000 min
 Exp R.T.: 5.819 min
 Response: 0
 Conc: N.D.

Instrument :
 ECD_O
 ClientSampleId :



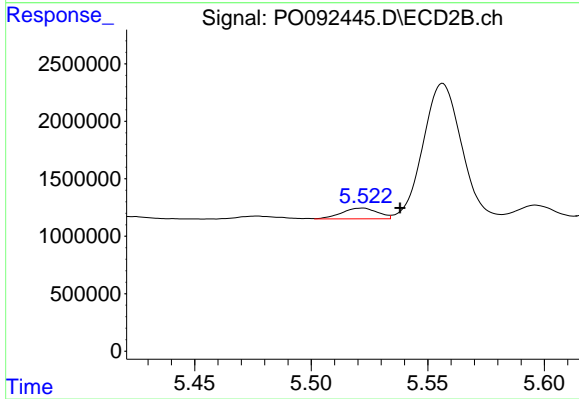
#19 AR-1242-4

R.T.: 5.029 min
 Delta R.T.: 0.016 min
 Response: 1627414
 Conc: 50.59 ng/ml



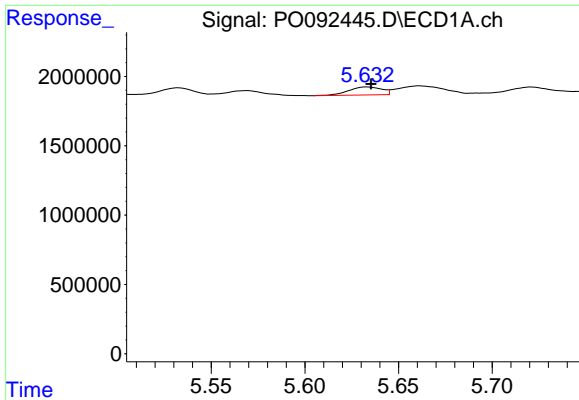
#20 AR-1242-5

R.T.: 6.575 min
 Delta R.T.: 0.004 min
 Response: 5965765
 Conc: 106.87 ng/ml



#20 AR-1242-5

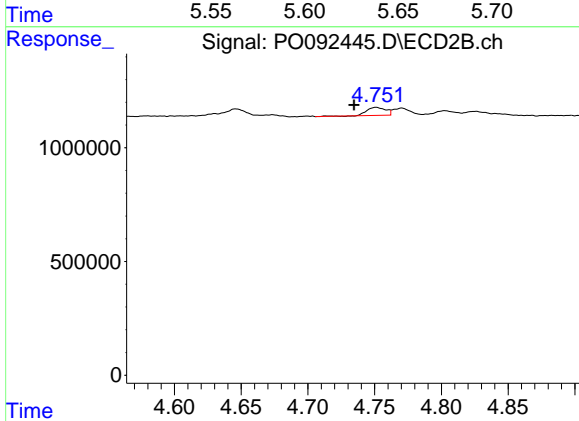
R.T.: 5.522 min
 Delta R.T.: -0.016 min
 Response: 995197
 Conc: 27.49 ng/ml



#21 AR-1248-1

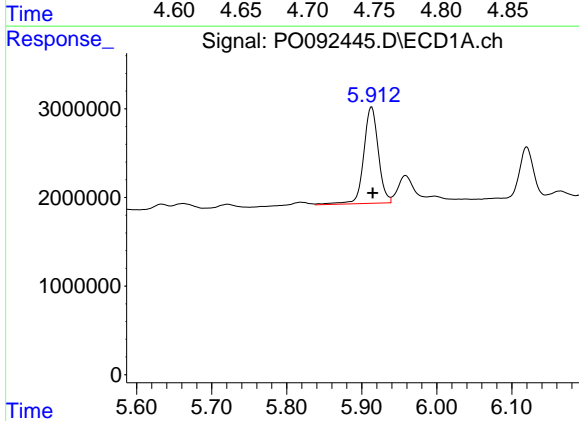
R.T.: 5.633 min
 Delta R.T.: -0.002 min
 Response: 708036
 Conc: 12.20 ng/ml

Instrument :
 ECD_O
 ClientSampleId :



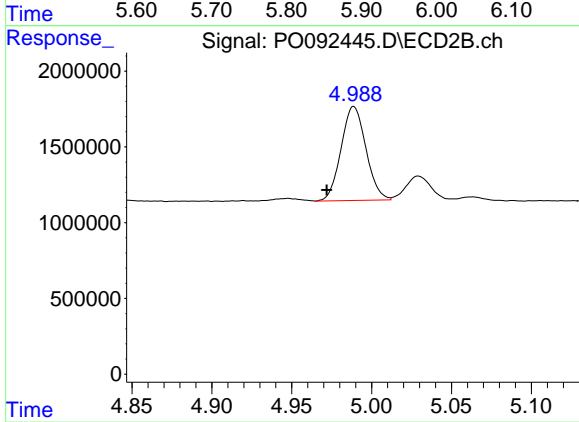
#21 AR-1248-1

R.T.: 4.751 min
 Delta R.T.: 0.017 min
 Response: 340677
 Conc: 11.69 ng/ml



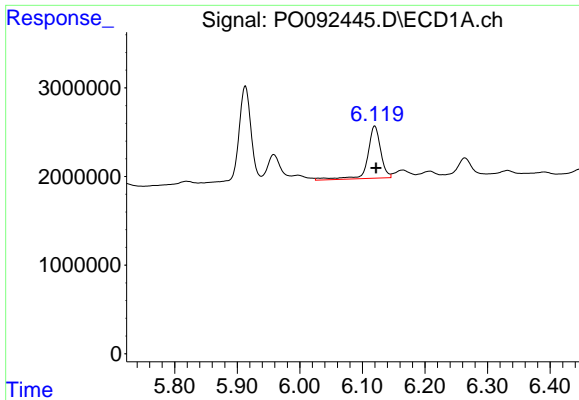
#22 AR-1248-2

R.T.: 5.913 min
 Delta R.T.: -0.002 min
 Response: 14740819
 Conc: 161.31 ng/ml



#22 AR-1248-2

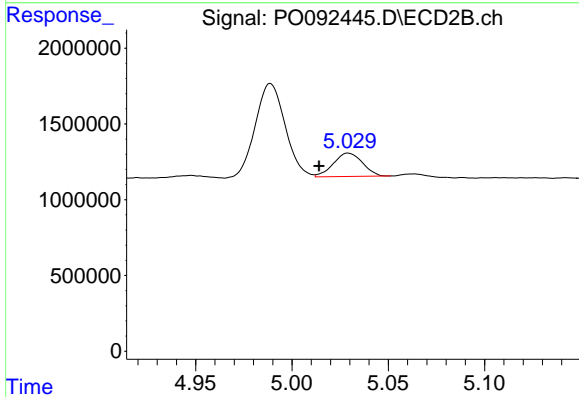
R.T.: 4.989 min
 Delta R.T.: 0.017 min
 Response: 6725610
 Conc: 149.07 ng/ml



#23 AR-1248-3

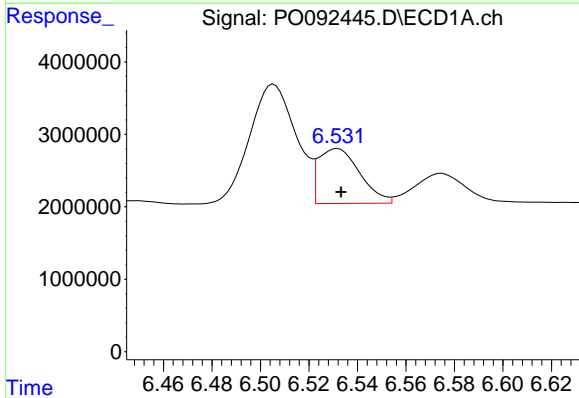
R.T.: 6.120 min
 Delta R.T.: -0.002 min
 Response: 8506829
 Conc: 86.74 ng/ml

Instrument :
 ECD_O
 ClientSampleId :



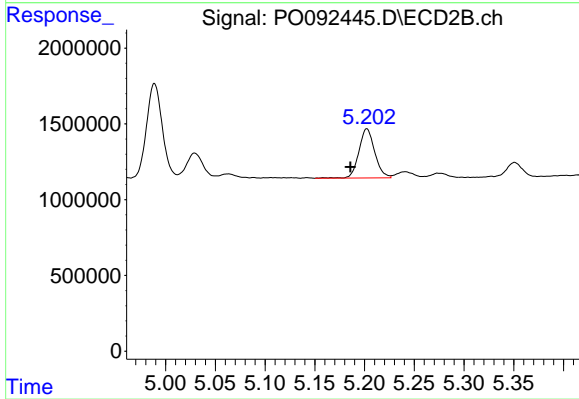
#23 AR-1248-3

R.T.: 5.029 min
 Delta R.T.: 0.015 min
 Response: 1627414
 Conc: 34.89 ng/ml



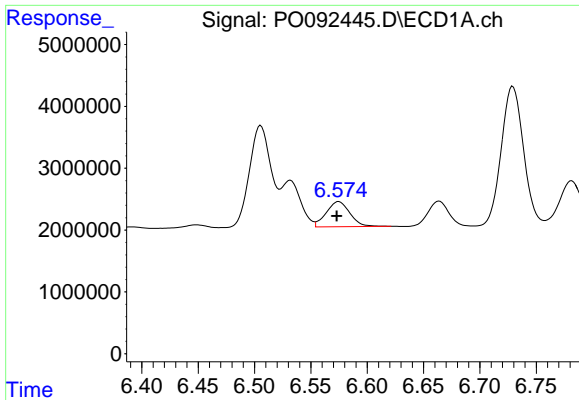
#24 AR-1248-4

R.T.: 6.532 min
 Delta R.T.: -0.001 min
 Response: 8963230
 Conc: 91.55 ng/ml



#24 AR-1248-4

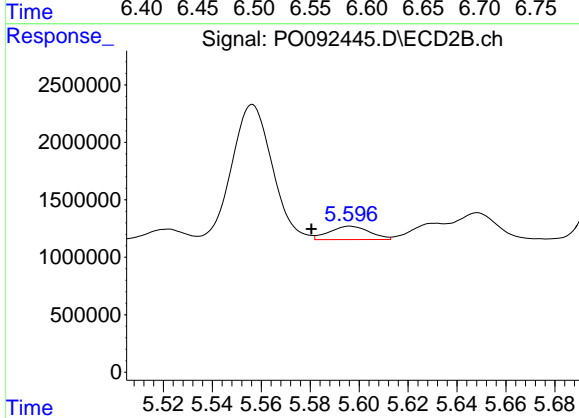
R.T.: 5.202 min
 Delta R.T.: 0.016 min
 Response: 3598913
 Conc: 66.98 ng/ml



#25 AR-1248-5

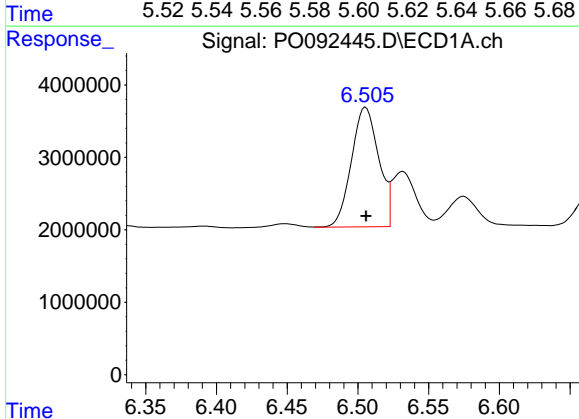
R.T.: 6.575 min
 Delta R.T.: 0.002 min
 Response: 5965765
 Conc: 63.28 ng/ml

Instrument :
 ECD_O
 ClientSampleId :



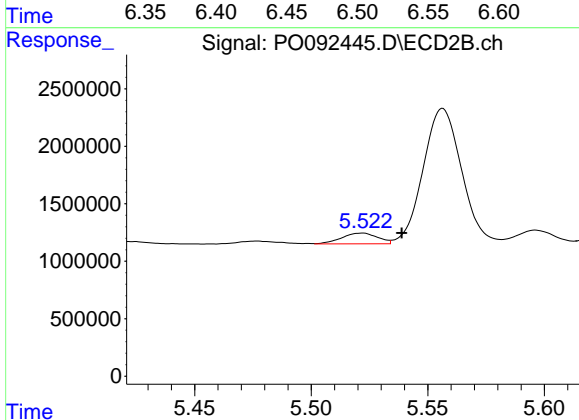
#25 AR-1248-5

R.T.: 5.596 min
 Delta R.T.: 0.016 min
 Response: 1326622
 Conc: 28.02 ng/ml



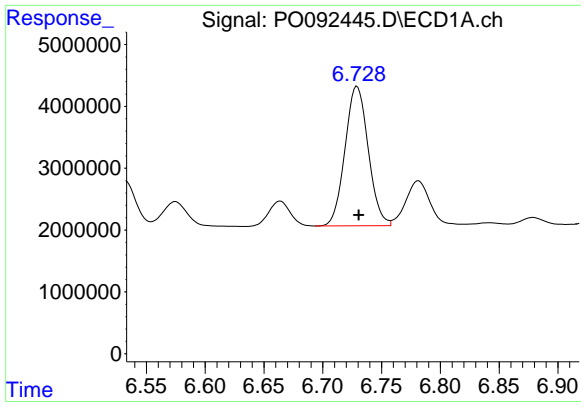
#26 AR-1254-1

R.T.: 6.505 min
 Delta R.T.: 0.000 min
 Response: 22120039
 Conc: 199.79 ng/ml



#26 AR-1254-1

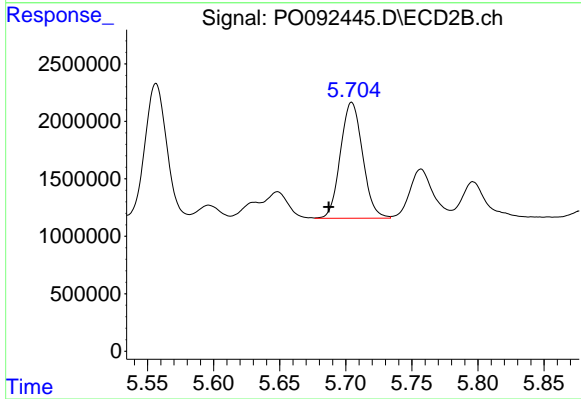
R.T.: 5.522 min
 Delta R.T.: -0.017 min
 Response: 995197
 Conc: 12.70 ng/ml



#27 AR-1254-2

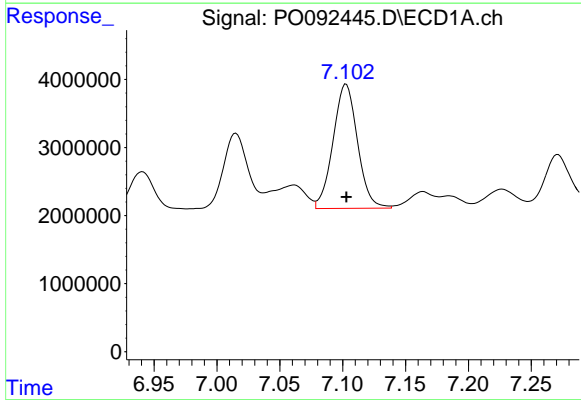
R.T.: 6.729 min
 Delta R.T.: -0.001 min
 Response: 30993421
 Conc: 190.66 ng/ml

Instrument :
 ECD_O
 ClientSampleId :



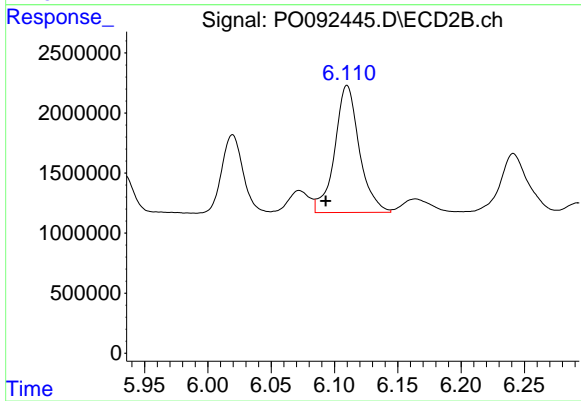
#27 AR-1254-2

R.T.: 5.705 min
 Delta R.T.: 0.017 min
 Response: 11779836
 Conc: 170.25 ng/ml



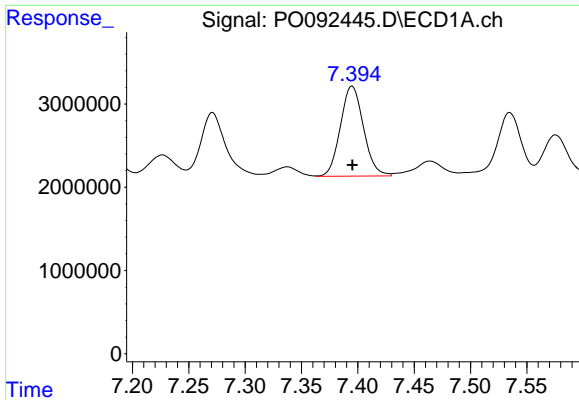
#28 AR-1254-3

R.T.: 7.103 min
 Delta R.T.: 0.000 min
 Response: 24748882
 Conc: 150.06 ng/ml



#28 AR-1254-3

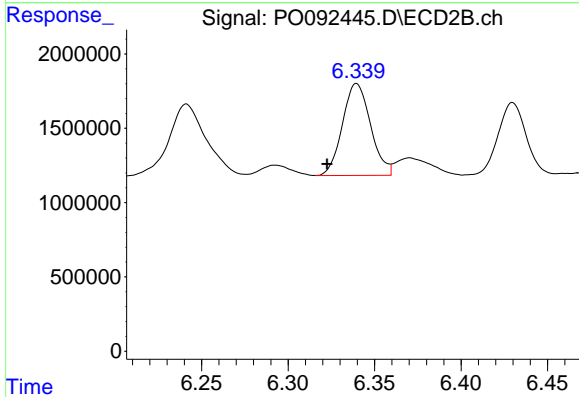
R.T.: 6.110 min
 Delta R.T.: 0.017 min
 Response: 14342274
 Conc: 134.37 ng/ml



#29 AR-1254-4

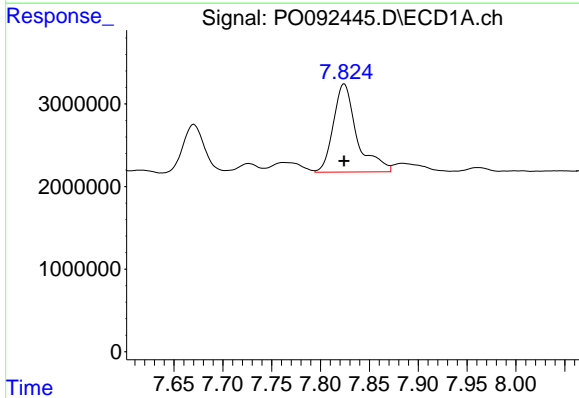
R.T.: 7.395 min
 Delta R.T.: 0.000 min
 Response: 15397392
 Conc: 140.76 ng/ml

Instrument :
 ECD_O
 ClientSampleId :



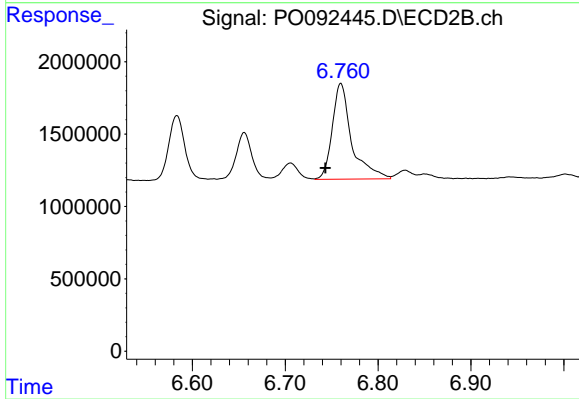
#29 AR-1254-4

R.T.: 6.340 min
 Delta R.T.: 0.017 min
 Response: 6982733
 Conc: 118.56 ng/ml



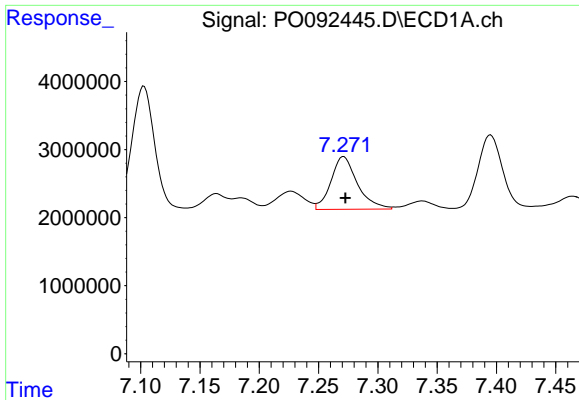
#30 AR-1254-5

R.T.: 7.824 min
 Delta R.T.: 0.000 min
 Response: 17903580
 Conc: 127.25 ng/ml



#30 AR-1254-5

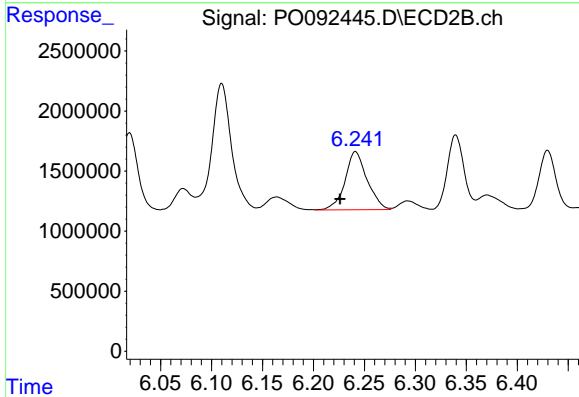
R.T.: 6.760 min
 Delta R.T.: 0.017 min
 Response: 9639963
 Conc: 105.92 ng/ml



#31 AR-1260-1

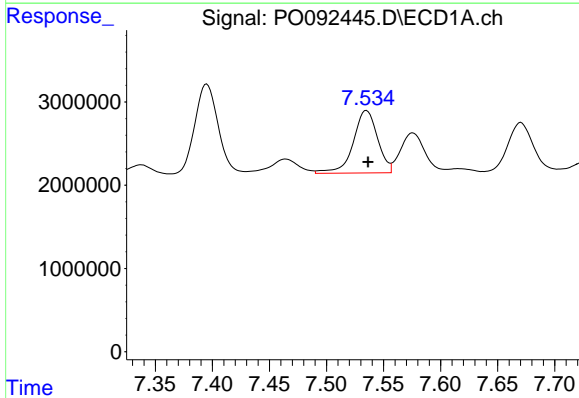
R.T.: 7.271 min
 Delta R.T.: -0.001 min
 Response: 12055113
 Conc: 91.50 ng/ml

Instrument :
 ECD_O
 ClientSampleId :



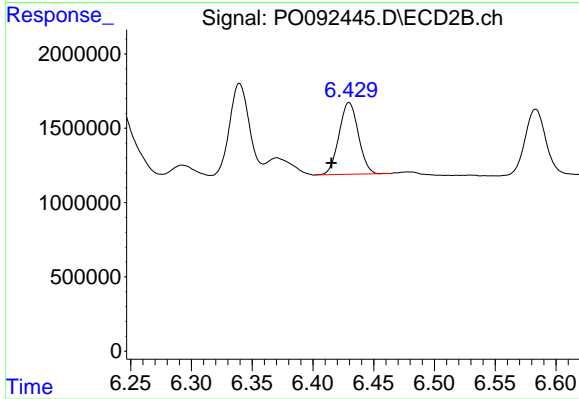
#31 AR-1260-1

R.T.: 6.241 min
 Delta R.T.: 0.015 min
 Response: 7292666
 Conc: 96.54 ng/ml



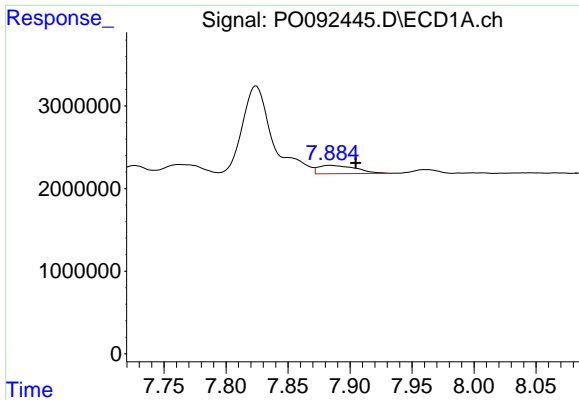
#32 AR-1260-2

R.T.: 7.535 min
 Delta R.T.: -0.002 min
 Response: 11146948
 Conc: 75.17 ng/ml



#32 AR-1260-2

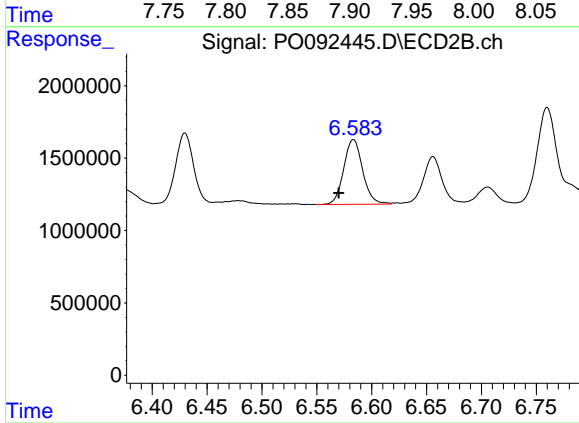
R.T.: 6.430 min
 Delta R.T.: 0.015 min
 Response: 5341885
 Conc: 60.97 ng/ml



#33 AR-1260-3

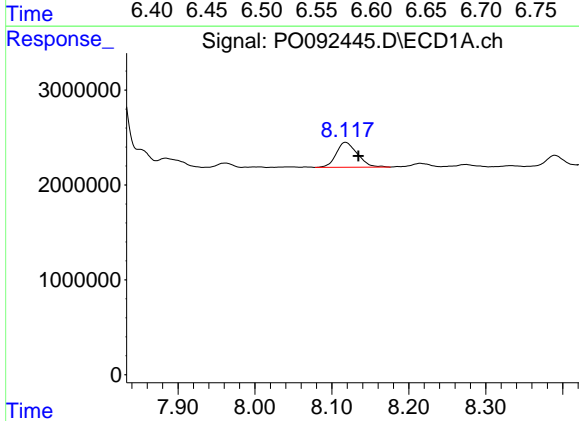
R.T.: 7.884 min
 Delta R.T.: -0.020 min
 Response: 2085789
 Conc: 18.42 ng/ml

Instrument :
 ECD_O
 ClientSampleId :



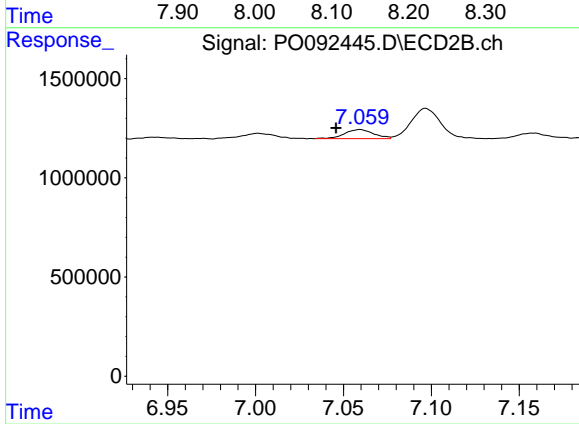
#33 AR-1260-3

R.T.: 6.583 min
 Delta R.T.: 0.013 min
 Response: 5384957
 Conc: 62.12 ng/ml



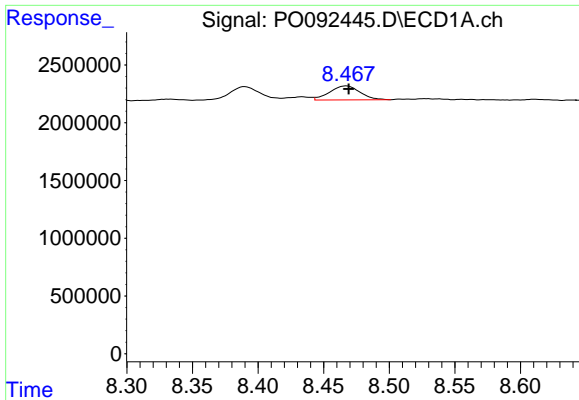
#34 AR-1260-4

R.T.: 8.118 min
 Delta R.T.: -0.017 min
 Response: 5014140
 Conc: 40.45 ng/ml



#34 AR-1260-4

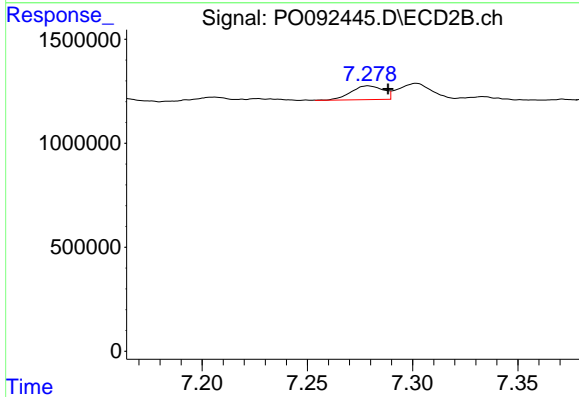
R.T.: 7.059 min
 Delta R.T.: 0.013 min
 Response: 526681
 Conc: 7.86 ng/ml



#35 AR-1260-5

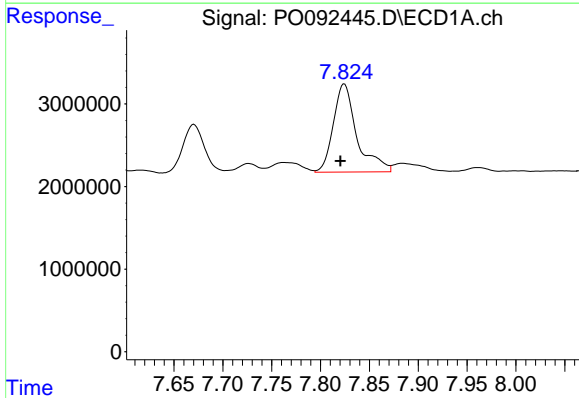
R.T.: 8.467 min
Delta R.T.: -0.002 min
Response: 1944943
Conc: 8.76 ng/ml

Instrument :
ECD_O
ClientSampleId :



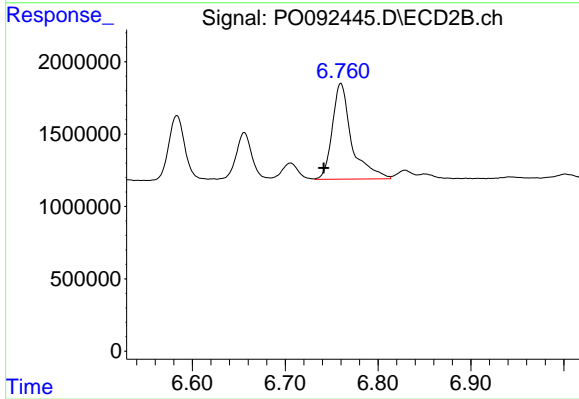
#35 AR-1260-5

R.T.: 7.279 min
Delta R.T.: -0.009 min
Response: 707951
Conc: 4.98 ng/ml



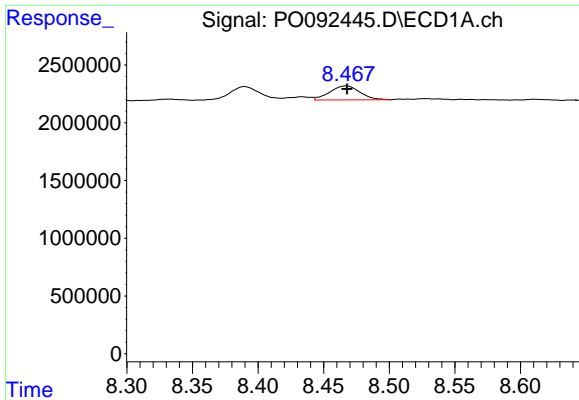
#36 AR-1262-1

R.T.: 7.824 min
Delta R.T.: 0.004 min
Response: 17903580
Conc: 165.70 ng/ml



#36 AR-1262-1

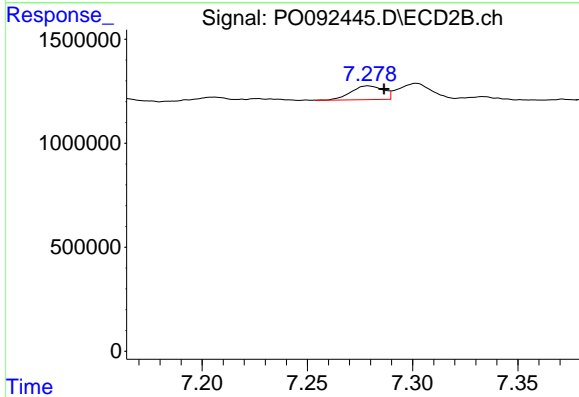
R.T.: 6.760 min
Delta R.T.: 0.019 min
Response: 9639963
Conc: 207.71 ng/ml



#37 AR-1262-2

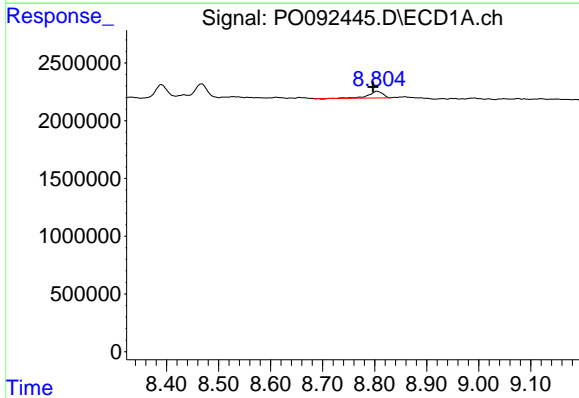
R.T.: 8.467 min
 Delta R.T.: 0.000 min
 Response: 1944943
 Conc: 8.15 ng/ml

Instrument :
 ECD_O
 ClientSampleId :



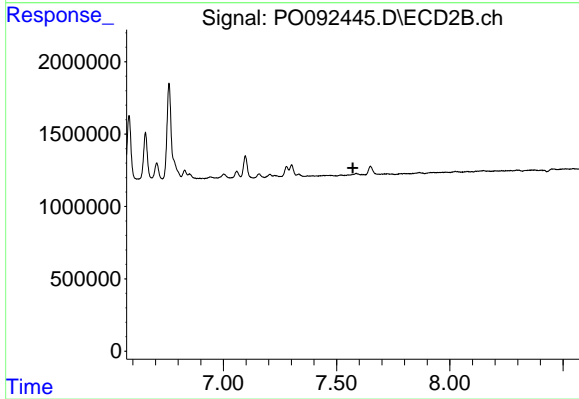
#37 AR-1262-2

R.T.: 7.279 min
 Delta R.T.: -0.007 min
 Response: 707951
 Conc: 4.80 ng/ml



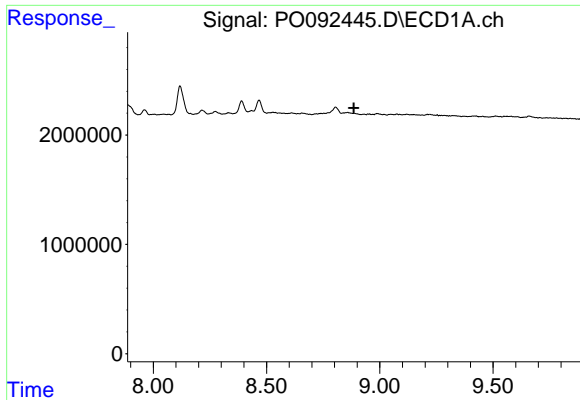
#38 AR-1262-3

R.T.: 8.805 min
 Delta R.T.: 0.008 min
 Response: 1070931
 Conc: 6.34 ng/ml



#38 AR-1262-3

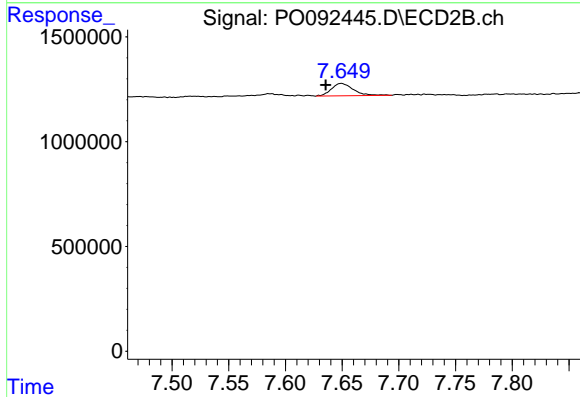
R.T.: 0.000 min
 Exp R.T. : 7.572 min
 Response: 0
 Conc: N.D.



#39 AR-1262-4

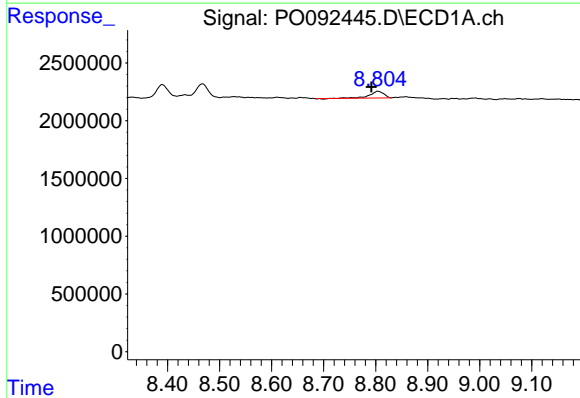
R.T.: 0.000 min
 Exp R.T.: 8.886 min
 Response: 0
 Conc: N.D.

Instrument :
 ECD_O
 ClientSampleId :



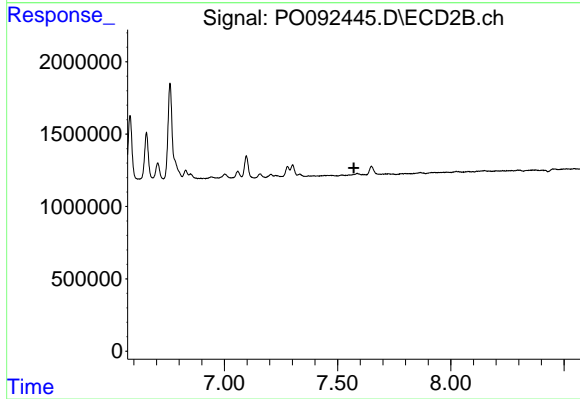
#39 AR-1262-4

R.T.: 7.649 min
 Delta R.T.: 0.014 min
 Response: 794084
 Conc: 7.25 ng/ml



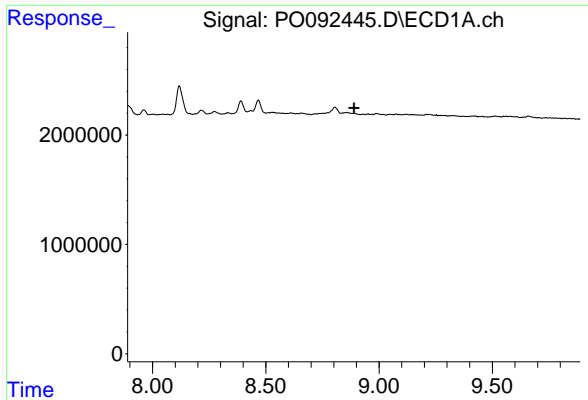
#41 AR-1268-1

R.T.: 8.805 min
 Delta R.T.: 0.013 min
 Response: 1070931
 Conc: 3.39 ng/ml



#41 AR-1268-1

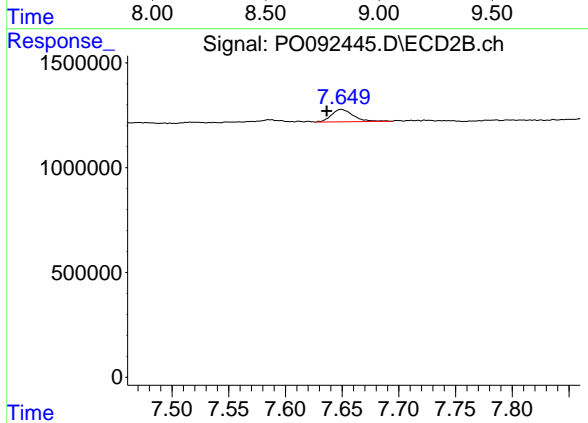
R.T.: 0.000 min
 Exp R.T.: 7.572 min
 Response: 0
 Conc: N.D.



#42 AR-1268-2

R.T.: 0.000 min
 Exp R.T.: 8.890 min
 Response: 0
 Conc: N.D.

Instrument :
 ECD_O
 ClientSampleId :



#42 AR-1268-2

R.T.: 7.649 min
 Delta R.T.: 0.013 min
 Response: 794084
 Conc: 4.80 ng/ml