

Data Path : Z:\pestpcbsrv\HPCHEM1\ECD\_0\Data\P0020923\  
 Data File : P0092450.D  
 Signal(s) : Signal #1: ECD1A.ch Signal #2: ECD2B.ch  
 Acq On : 09 Feb 2023 16:56  
 Operator : YP/AJ  
 Sample : AR1254CCC500  
 Misc :  
 ALS Vial : 6 Sample Multiplier: 1

Instrument :  
 ECD\_0  
 ClientSampleId :  
 AR1254CCC500

Integration File signal 1: autoint1.e  
 Integration File signal 2: autoint2.e  
 Quant Time: Feb 09 21:49:32 2023  
 Quant Method : Z:\pestpcbsrv\HPCHEM1\ECD\_0\methods\P0012323.M  
 Quant Title : GC EXTRACTABLES  
 QLast Update : Tue Jan 24 04:40:59 2023  
 Response via : Initial Calibration  
 Integrator: ChemStation

Volume Inj. : 2 µl  
 Signal #1 Phase : ZB-MR1 Signal #2 Phase: ZB-MR2  
 Signal #1 Info : 30Mx0.32mmx 0.50µ Signal #2 Info : 30M x 0.32mm x 0.25µm

Compound	RT#1	RT#2	Resp#1	Resp#2	ng/ml	ng/ml
-----						
System Monitoring Compounds						
1) SA Tetrachlo...	4.448	3.644	144.6E6	62942796	49.949	44.826
2) SA Decachlor...	10.371	8.684	106.1E6	52942409	51.426	46.897
Target Compounds						
26) L6 AR-1254-1	6.507	5.536	51416075	34190955	464.398	436.167
27) L6 AR-1254-2	6.731	5.685	77455838	30308529	476.492	438.043
28) L6 AR-1254-3	7.104	6.090	79540191	46575480	482.268	436.366
29) L6 AR-1254-4	7.396	6.319	52524057	25463267	480.174	432.355
30) L6 AR-1254-5	7.826	6.739	70238428	39739019	499.211	436.618
-----						

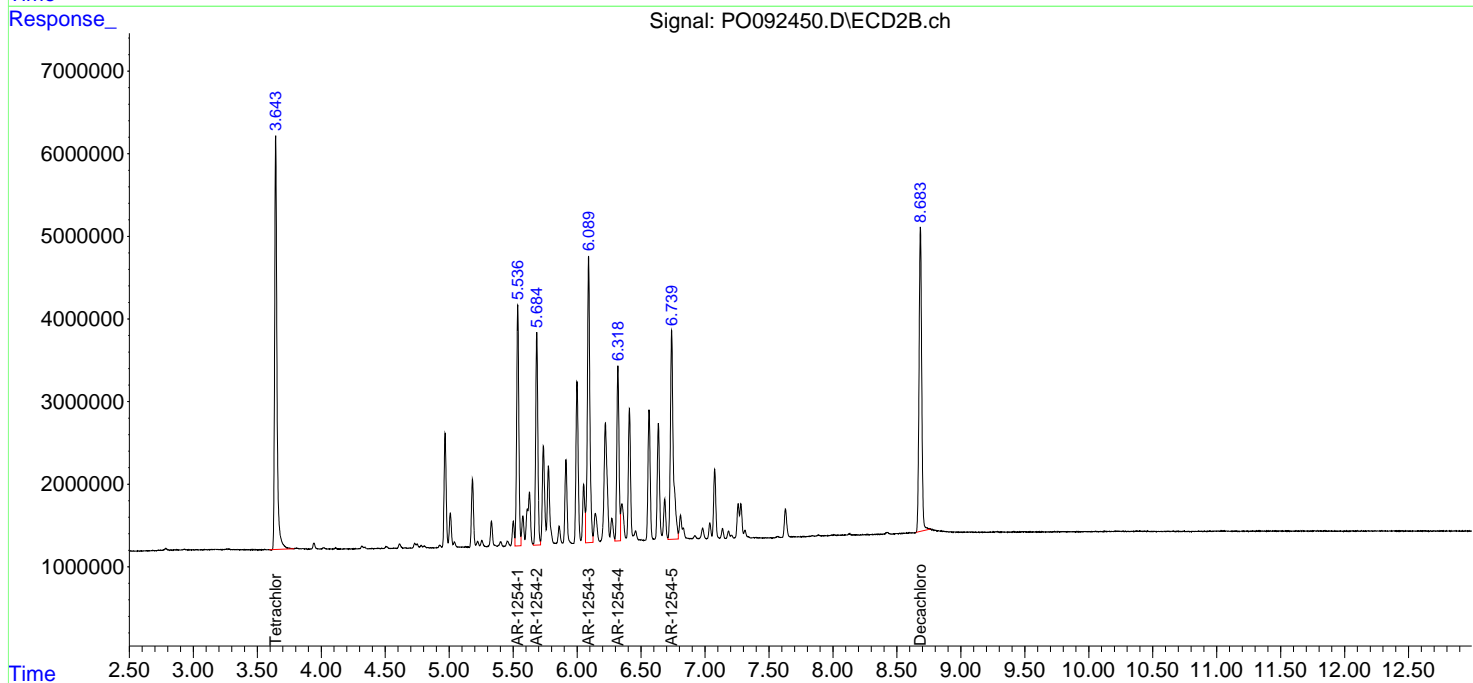
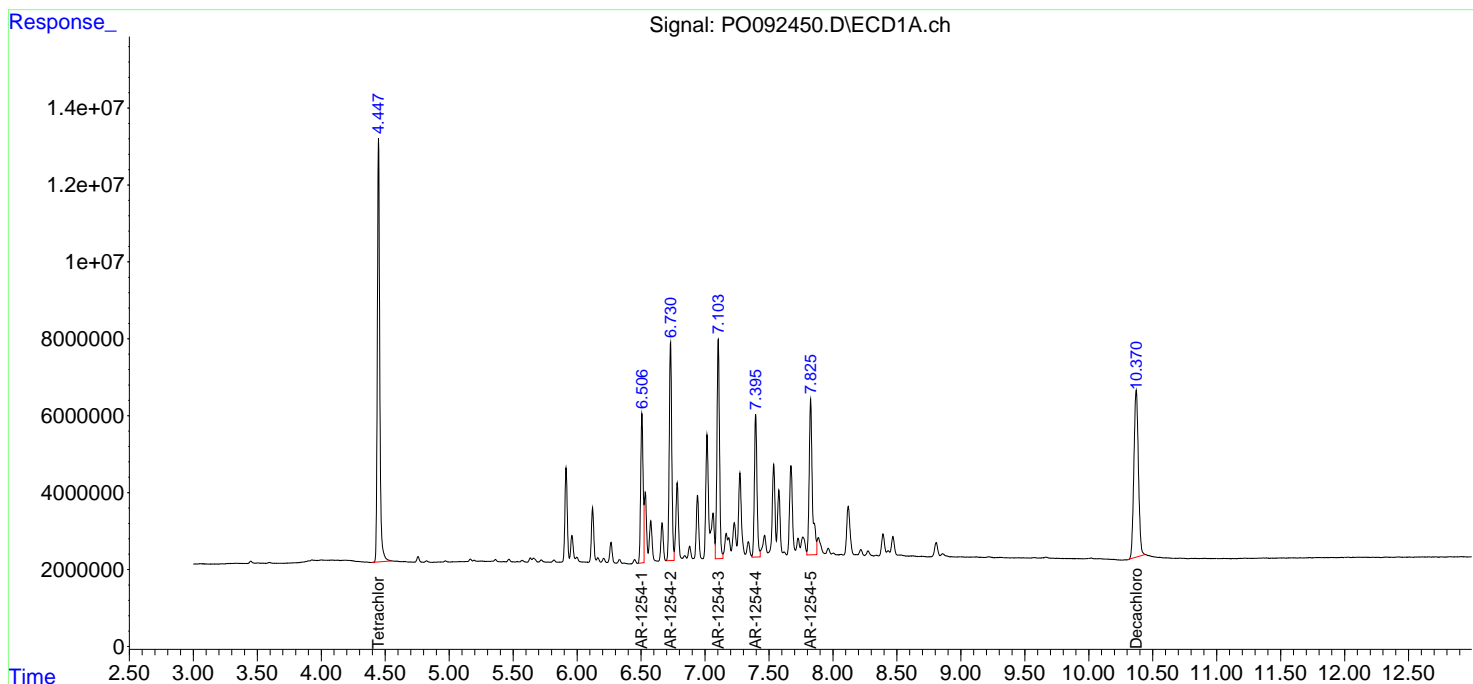
(f)=RT Delta > 1/2 Window (#)=Amounts differ by > 25% (m)=manual int.

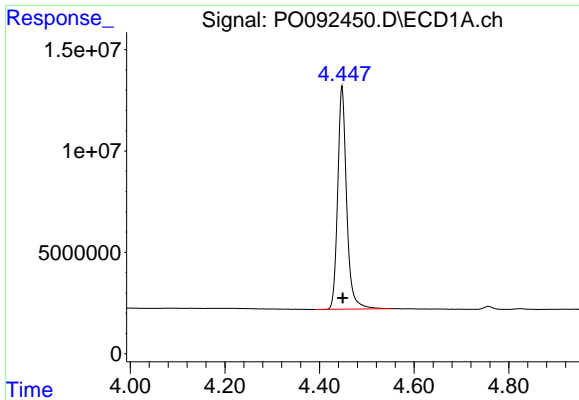
Data Path : Z:\pestpcbsrv\HPCHEM1\ECD\_O\Data\P0020923\  
 Data File : P0092450.D  
 Signal(s) : Signal #1: ECD1A.ch Signal #2: ECD2B.ch  
 Acq On : 09 Feb 2023 16:56  
 Operator : YP/AJ  
 Sample : AR1254CCC500  
 Misc :  
 ALS Vial : 6 Sample Multiplier: 1

Instrument :  
 ECD\_O  
 ClientSampleId :  
 AR1254CCC500

Integration File signal 1: autoint1.e  
 Integration File signal 2: autoint2.e  
 Quant Time: Feb 09 21:49:32 2023  
 Quant Method : Z:\pestpcbsrv\HPCHEM1\ECD\_O\methods\P0012323.M  
 Quant Title : GC EXTRACTABLES  
 QLast Update : Tue Jan 24 04:40:59 2023  
 Response via : Initial Calibration  
 Integrator: ChemStation

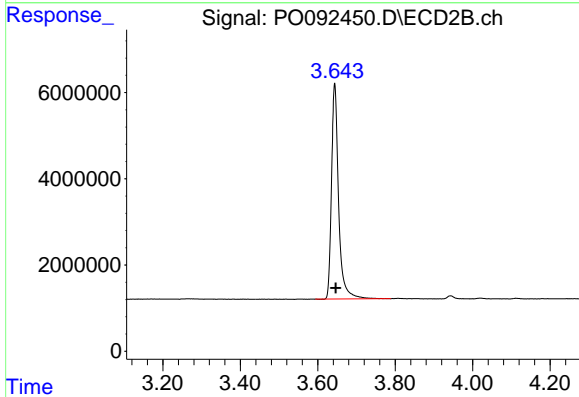
Volume Inj. : 2 µl  
 Signal #1 Phase : ZB-MR1 Signal #2 Phase: ZB-MR2  
 Signal #1 Info : 30Mx0.32mmx 0.50µm Signal #2 Info : 30M x 0.32mm x 0.25µm



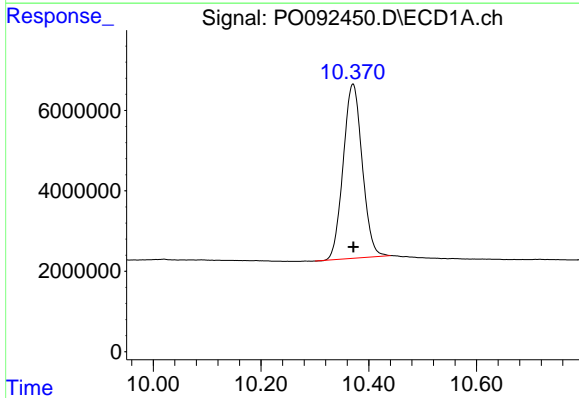


#1 Tetrachloro-m-xylene  
 R.T.: 4.448 min  
 Delta R.T.: -0.001 min  
 Response: 144597023  
 Conc: 49.95 ng/ml

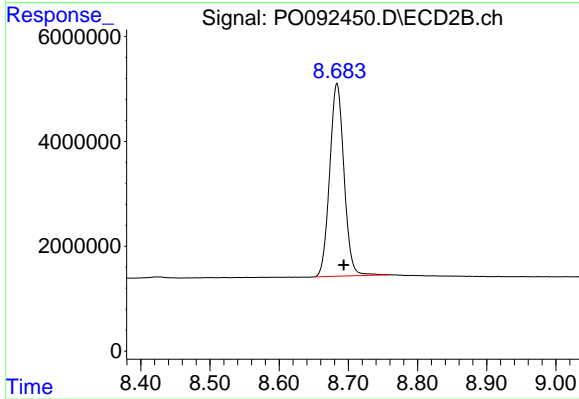
Instrument :  
 ECD\_O  
 ClientSampleId :  
 AR1254CCC500



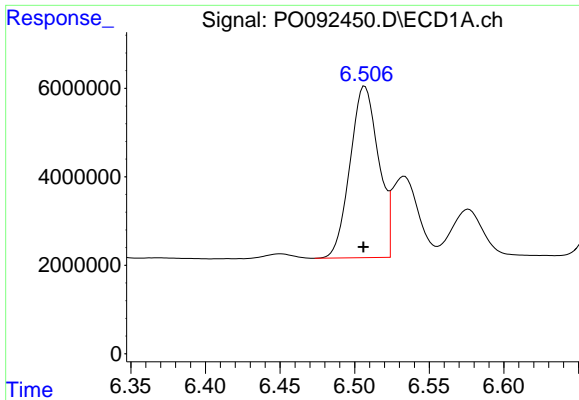
#1 Tetrachloro-m-xylene  
 R.T.: 3.644 min  
 Delta R.T.: -0.002 min  
 Response: 62942796  
 Conc: 44.83 ng/ml



#2 Decachlorobiphenyl  
 R.T.: 10.371 min  
 Delta R.T.: 0.000 min  
 Response: 106140237  
 Conc: 51.43 ng/ml



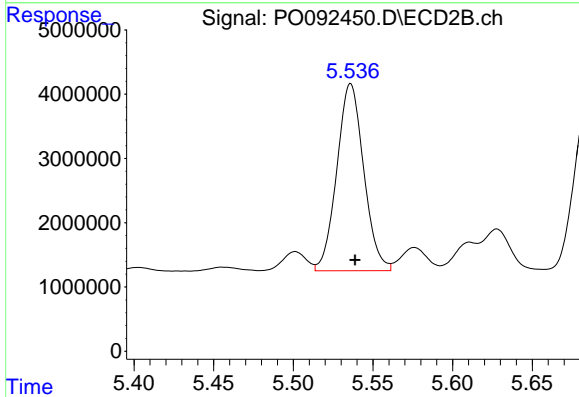
#2 Decachlorobiphenyl  
 R.T.: 8.684 min  
 Delta R.T.: -0.009 min  
 Response: 52942409  
 Conc: 46.90 ng/ml



#26 AR-1254-1

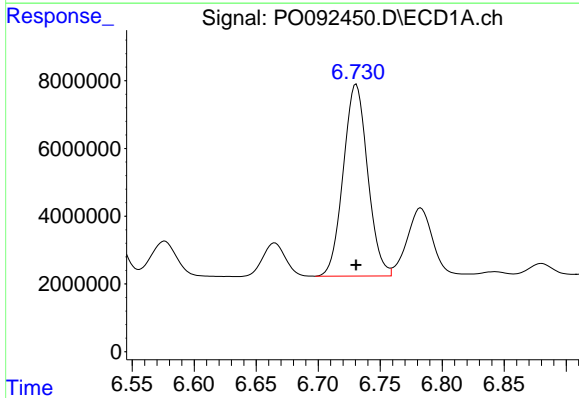
R.T.: 6.507 min  
 Delta R.T.: 0.000 min  
 Response: 51416075  
 Conc: 464.40 ng/ml

Instrument :  
 ECD\_O  
 ClientSampleId :  
 AR1254CCC500



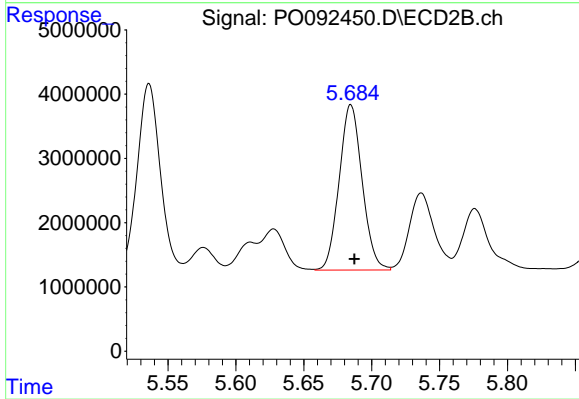
#26 AR-1254-1

R.T.: 5.536 min  
 Delta R.T.: -0.003 min  
 Response: 34190955  
 Conc: 436.17 ng/ml



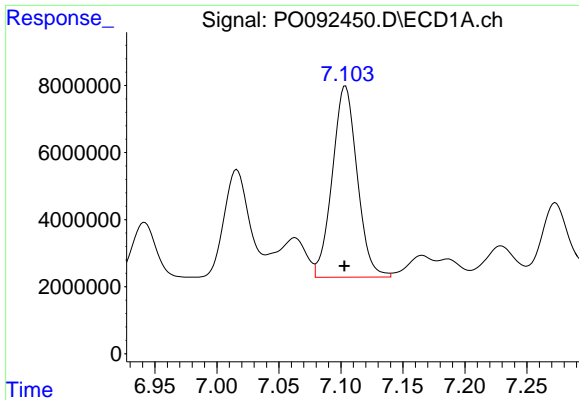
#27 AR-1254-2

R.T.: 6.731 min  
 Delta R.T.: 0.000 min  
 Response: 77455838  
 Conc: 476.49 ng/ml



#27 AR-1254-2

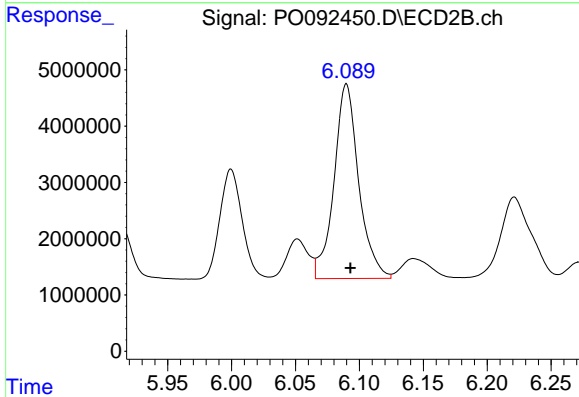
R.T.: 5.685 min  
 Delta R.T.: -0.003 min  
 Response: 30308529  
 Conc: 438.04 ng/ml



#28 AR-1254-3

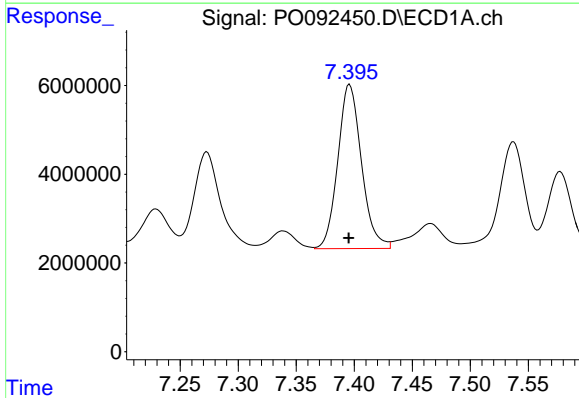
R.T.: 7.104 min  
 Delta R.T.: 0.000 min  
 Response: 79540191  
 Conc: 482.27 ng/ml

Instrument :  
 ECD\_O  
 ClientSampleId :  
 AR1254CCC500



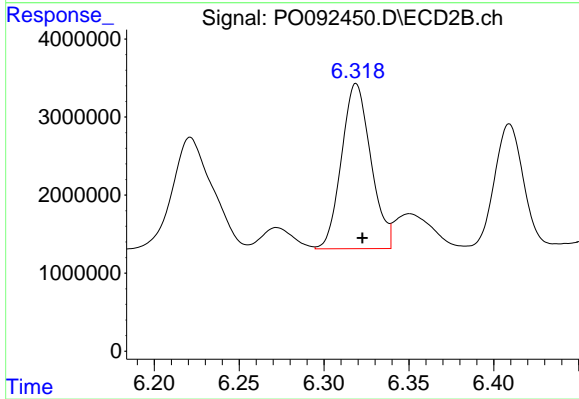
#28 AR-1254-3

R.T.: 6.090 min  
 Delta R.T.: -0.003 min  
 Response: 46575480  
 Conc: 436.37 ng/ml



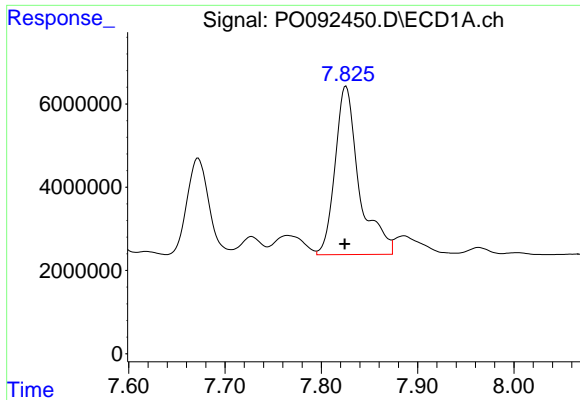
#29 AR-1254-4

R.T.: 7.396 min  
 Delta R.T.: 0.000 min  
 Response: 52524057  
 Conc: 480.17 ng/ml



#29 AR-1254-4

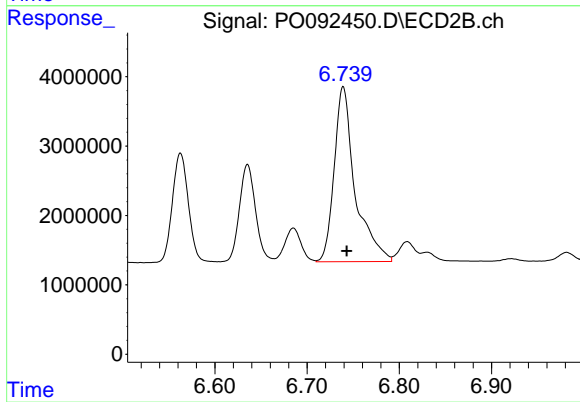
R.T.: 6.319 min  
 Delta R.T.: -0.004 min  
 Response: 25463267  
 Conc: 432.35 ng/ml



#30 AR-1254-5

R.T.: 7.826 min  
Delta R.T.: 0.001 min  
Response: 70238428  
Conc: 499.21 ng/ml

Instrument :  
ECD\_O  
ClientSampleId :  
AR1254CCC500



#30 AR-1254-5

R.T.: 6.739 min  
Delta R.T.: -0.004 min  
Response: 39739019  
Conc: 436.62 ng/ml