

Data Path : Z:\pestpcbsrv\HPCHEM1\ECD_0\Data\P0021022\
 Data File : P0084587.D
 Signal(s) : Signal #1: ECD1A.CH Signal #2: ECD2B.CH
 Acq On : 10 Feb 2022 16:46
 Operator : YP\AJ
 Sample : N1457-01
 Misc :
 ALS Vial : 20 Sample Multiplier: 1

Instrument :
 ECD_0
 ClientSampleId :
 BUR-1140

Integration File signal 1: autoint1.e
 Integration File signal 2: autoint2.e
 Quant Time: Feb 11 05:48:59 2022
 Quant Method : Z:\pestpcbsrv\HPCHEM1\ECD_0\methods\P0020822.M
 Quant Title : GC EXTRACTABLES
 QLast Update : Thu Feb 10 07:10:18 2022
 Response via : Initial Calibration
 Integrator: ChemStation 6890 Scale Mode: Small noise peaks clipped

Volume Inj. : 2 µl
 Signal #1 Phase : ZB-MR1 Signal #2 Phase: ZB-MR2
 Signal #1 Info : 30Mx0.32mmx 0.50µ Signal #2 Info : 30M x 0.32mm x 0.25µm

Compound	RT#1	RT#2	Resp#1	Resp#2	ng/ml	ng/ml

System Monitoring Compounds						
1) SA Tetrachlo...	4.509	3.783	2436586	825142	21.429	17.960
2) SA Decachlor...	10.451	8.828	1504252	662831	18.780	17.698

Target Compounds

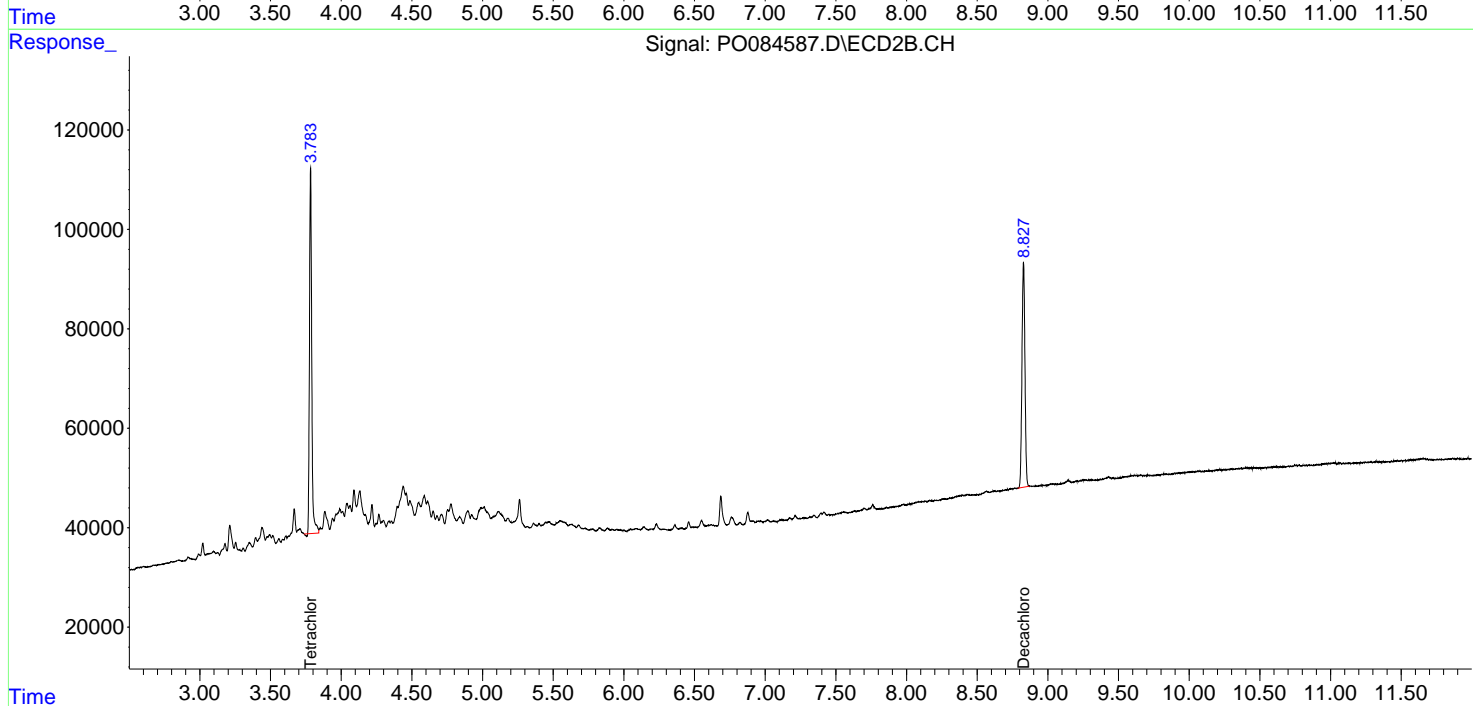
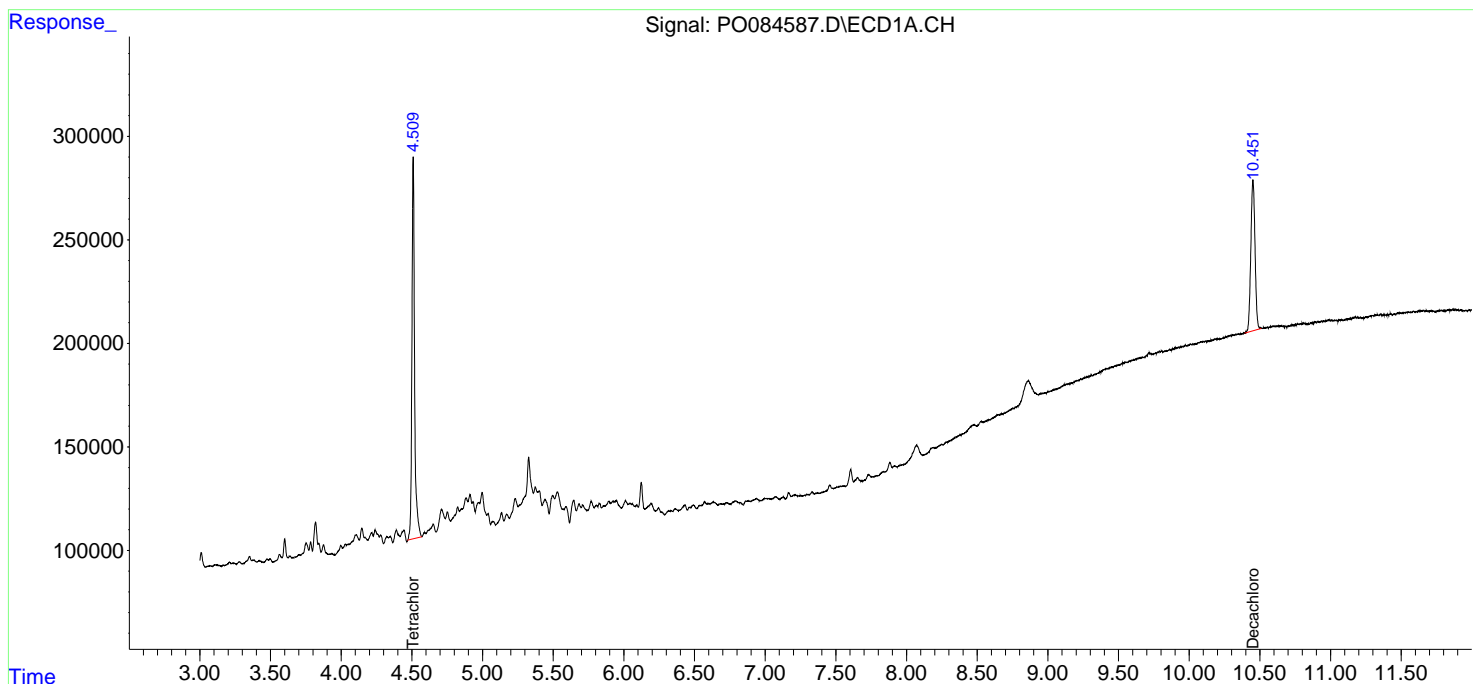
(f)=RT Delta > 1/2 Window (#)=Amounts differ by > 25% (m)=manual int.

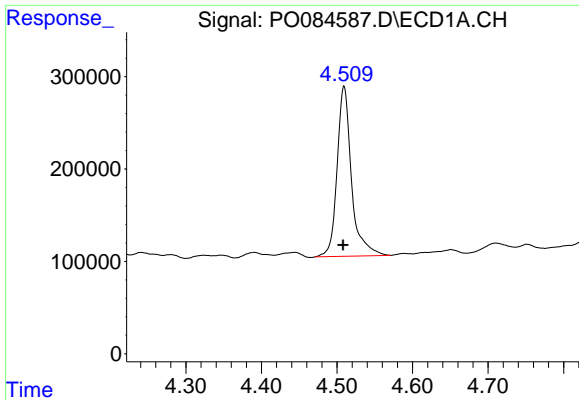
Data Path : Z:\pestpcbsrv\HPCHEM1\ECD_O\Data\P0021022\
 Data File : P0084587.D
 Signal(s) : Signal #1: ECD1A.CH Signal #2: ECD2B.CH
 Acq On : 10 Feb 2022 16:46
 Operator : YP\AJ
 Sample : N1457-01
 Misc :
 ALS Vial : 20 Sample Multiplier: 1

Instrument :
 ECD_O
 ClientSampleId :
 BUR-1140

Integration File signal 1: autoint1.e
 Integration File signal 2: autoint2.e
 Quant Time: Feb 11 05:48:59 2022
 Quant Method : Z:\pestpcbsrv\HPCHEM1\ECD_O\methods\P0020822.M
 Quant Title : GC EXTRACTABLES
 QLast Update : Thu Feb 10 07:10:18 2022
 Response via : Initial Calibration
 Integrator: ChemStation 6890 Scale Mode: Small noise peaks clipped

Volume Inj. : 2 µl
 Signal #1 Phase : ZB-MR1 Signal #2 Phase: ZB-MR2
 Signal #1 Info : 30Mx0.32mmx 0.50µ Signal #2 Info : 30M x 0.32mm x 0.25µm

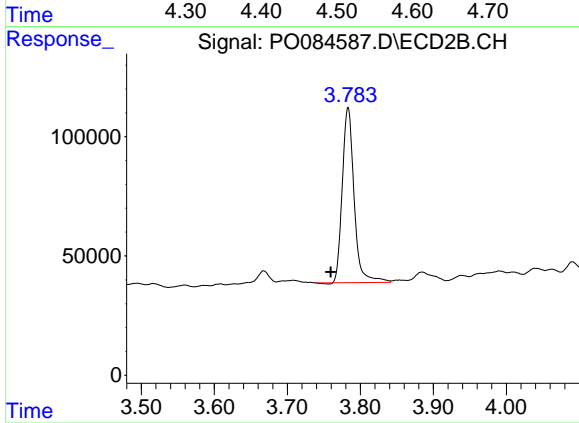




#1 Tetrachloro-m-xylene

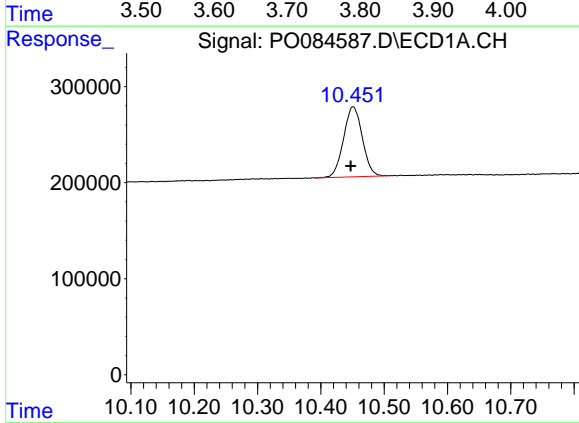
R.T.: 4.509 min
 Delta R.T.: 0.001 min
 Response: 2436586
 Conc: 21.43 ng/ml

Instrument :
 ECD_O
 ClientSampleId :
 BUR-1140



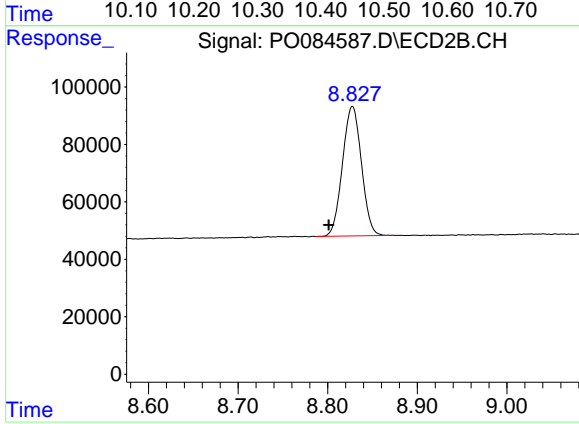
#1 Tetrachloro-m-xylene

R.T.: 3.783 min
 Delta R.T.: 0.024 min
 Response: 825142
 Conc: 17.96 ng/ml



#2 Decachlorobiphenyl

R.T.: 10.451 min
 Delta R.T.: 0.004 min
 Response: 1504252
 Conc: 18.78 ng/ml



#2 Decachlorobiphenyl

R.T.: 8.828 min
 Delta R.T.: 0.026 min
 Response: 662831
 Conc: 17.70 ng/ml