

Data Path : Z:\pestpcbsrv\HPCHEM1\ECD_0\Data\P0021024\
 Data File : P0101675.D
 Signal(s) : Signal #1: ECD1A.ch Signal #2: ECD2B.ch
 Acq On : 11 Feb 2024 07:44
 Operator : YP/AJ
 Sample : AR1242ICV500
 Misc :
 ALS Vial : 32 Sample Multiplier: 1

Instrument :
 ECD_0
ClientSampleId :
 ICVPO021024AR1242

Integration File signal 1: autoint1.e
 Integration File signal 2: autoint2.e
 Quant Time: Feb 12 05:24:34 2024
 Quant Method : Z:\pestpcbsrv\HPCHEM1\ECD_0\methods\P0021024.M
 Quant Title : GC EXTRACTABLES
 QLast Update : Mon Feb 12 05:22:08 2024
 Response via : Initial Calibration
 Integrator: ChemStation

Volume Inj. : 2 µl
 Signal #1 Phase : ZB-MR1 Signal #2 Phase: ZB-MR2
 Signal #1 Info : 30Mx0.32mmx 0.50µ Signal #2 Info : 30M x 0.32mm x 0.25µm

Compound	RT#1	RT#2	Resp#1	Resp#2	ng/ml	ng/ml

System Monitoring Compounds						
1) SA Tetrachlo...	4.288	3.401	149.6E6	132.3E6	48.506	49.775
2) SA Decachlor...	9.843	8.283	117.8E6	94548900	56.170	49.766
Target Compounds						
16) L4 AR-1242-1	5.434	4.456	35925921	29448482	488.391	525.340
17) L4 AR-1242-2	5.456	4.474	53924312	42230876	494.876	534.732
18) L4 AR-1242-3	5.517	4.646	34772922	23274099	492.937	546.430
19) L4 AR-1242-4	5.614	4.728	27593515	25079739	486.566	541.519
20) L4 AR-1242-5	6.341	5.241	27862549	26614083	504.576	538.080

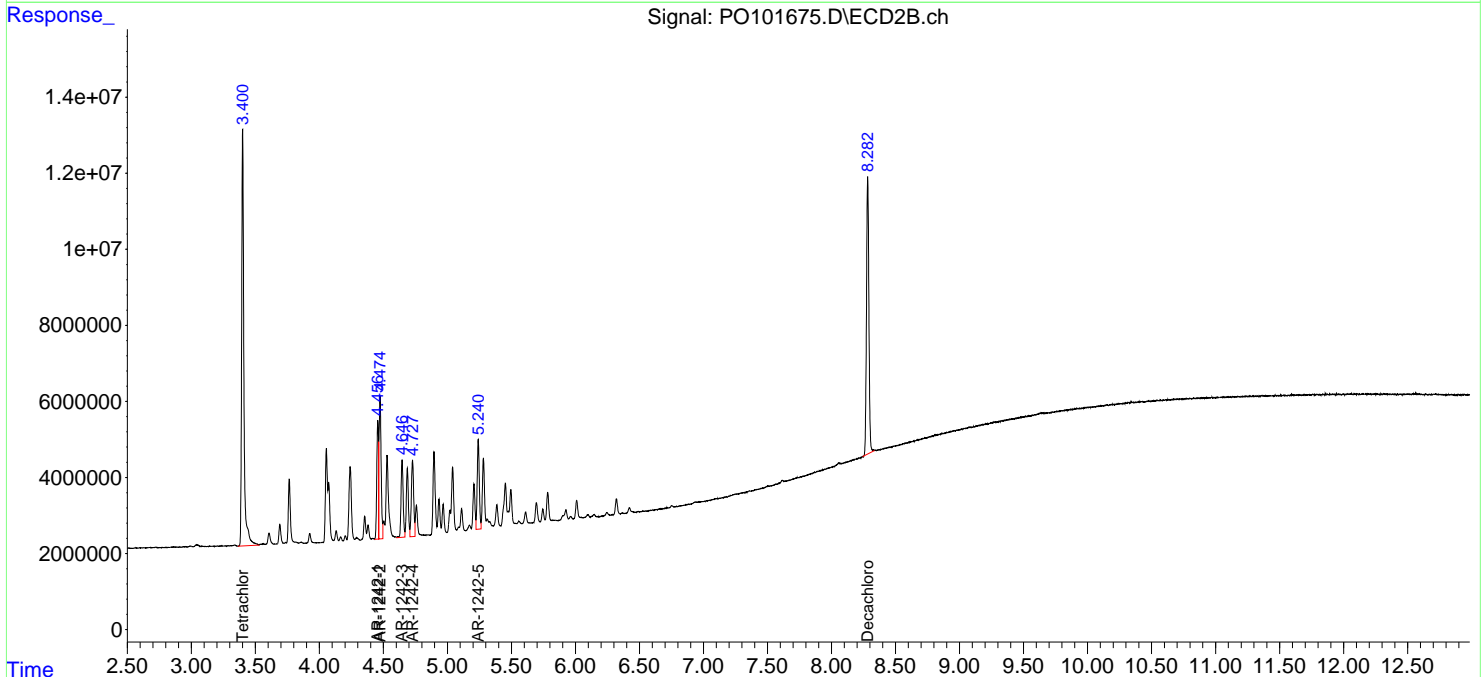
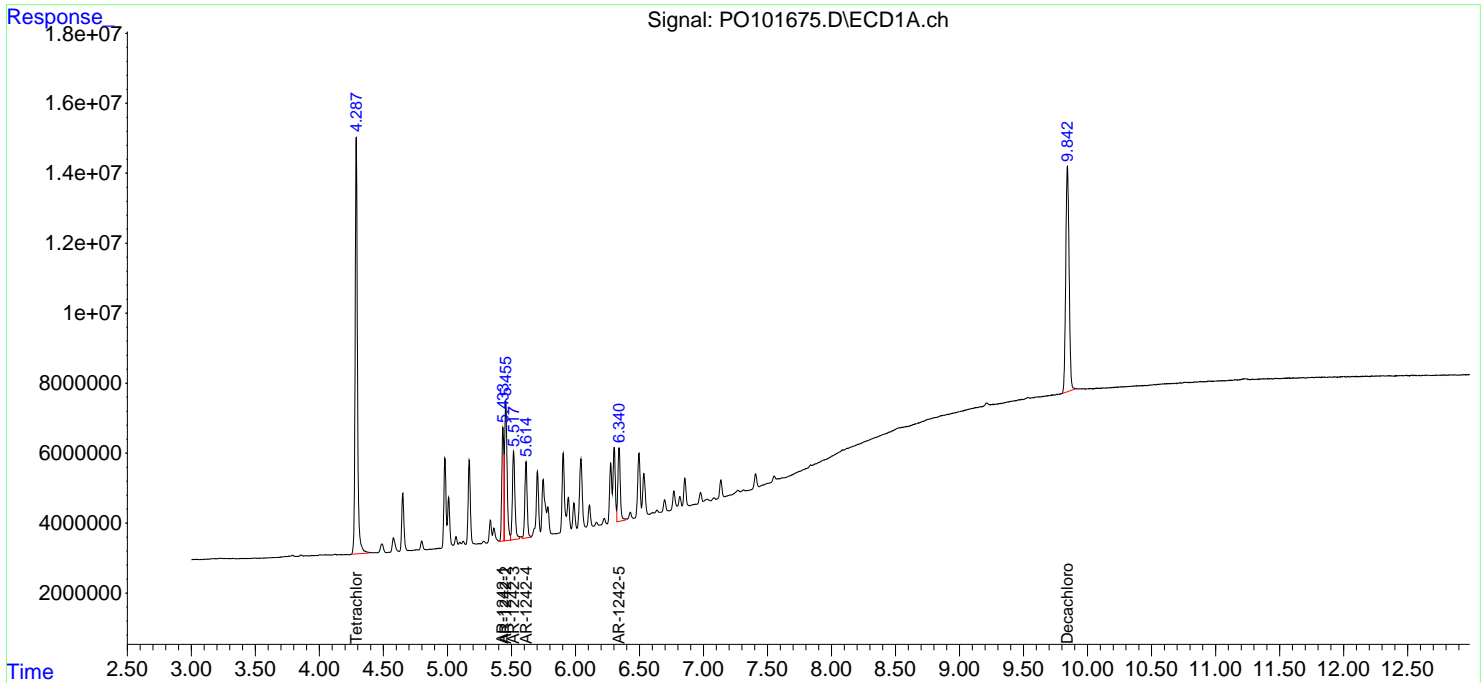
(f)=RT Delta > 1/2 Window (#)=Amounts differ by > 25% (m)=manual int.

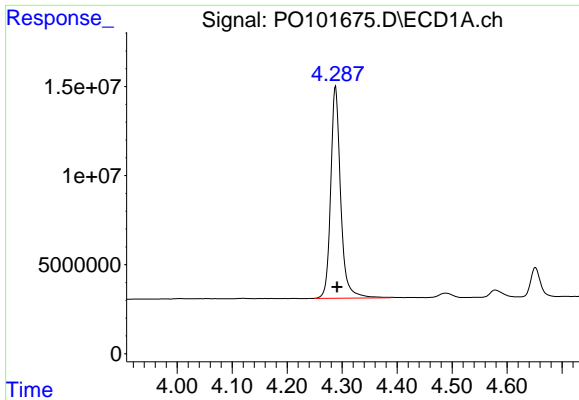
Data Path : Z:\pestpcbsrv\HPCHEM1\ECD_O\Data\PO021024\
 Data File : PO101675.D
 Signal(s) : Signal #1: ECD1A.ch Signal #2: ECD2B.ch
 Acq On : 11 Feb 2024 07:44
 Operator : YP/AJ
 Sample : AR1242ICV500
 Misc :
 ALS Vial : 32 Sample Multiplier: 1

Instrument :
 ECD_O
 ClientSampleId :
 ICVPO021024AR1242

Integration File signal 1: autoint1.e
 Integration File signal 2: autoint2.e
 Quant Time: Feb 12 05:24:34 2024
 Quant Method : Z:\pestpcbsrv\HPCHEM1\ECD_O\methods\PO021024.M
 Quant Title : GC EXTRACTABLES
 QLast Update : Mon Feb 12 05:22:08 2024
 Response via : Initial Calibration
 Integrator: ChemStation

Volume Inj. : 2 µl
 Signal #1 Phase : ZB-MR1 Signal #2 Phase: ZB-MR2
 Signal #1 Info : 30Mx0.32mmx 0.50µ Signal #2 Info : 30M x 0.32mm x 0.25µm

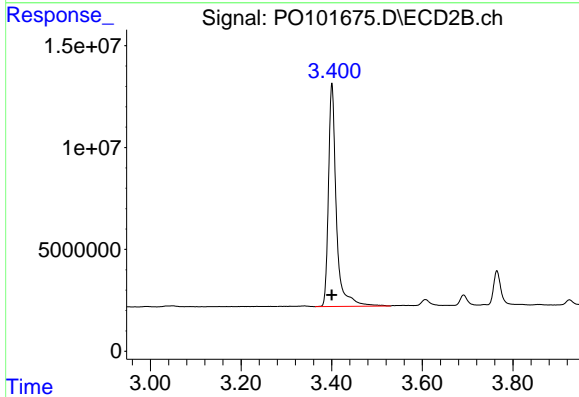




#1 Tetrachloro-m-xylene

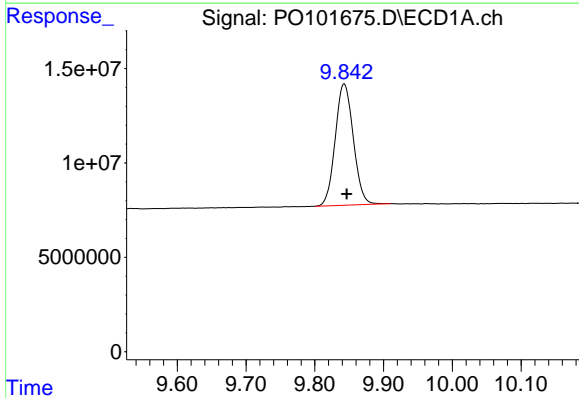
R.T.: 4.288 min
Delta R.T.: -0.003 min
Response: 149567767
Conc: 48.51 ng/ml

Instrument :
ECD_O
ClientSampleId :
ICVPO021024AR1242



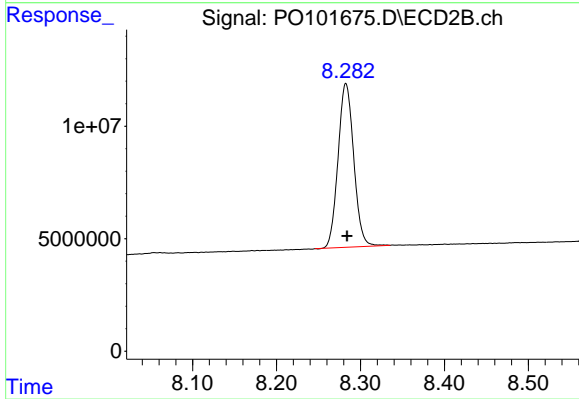
#1 Tetrachloro-m-xylene

R.T.: 3.401 min
Delta R.T.: 0.000 min
Response: 132309375
Conc: 49.78 ng/ml



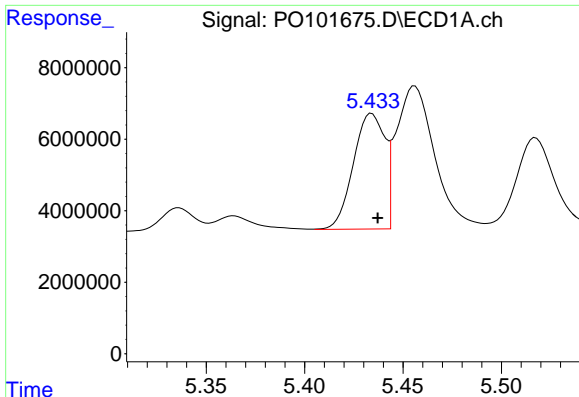
#2 Decachlorobiphenyl

R.T.: 9.843 min
Delta R.T.: -0.003 min
Response: 117785420
Conc: 56.17 ng/ml



#2 Decachlorobiphenyl

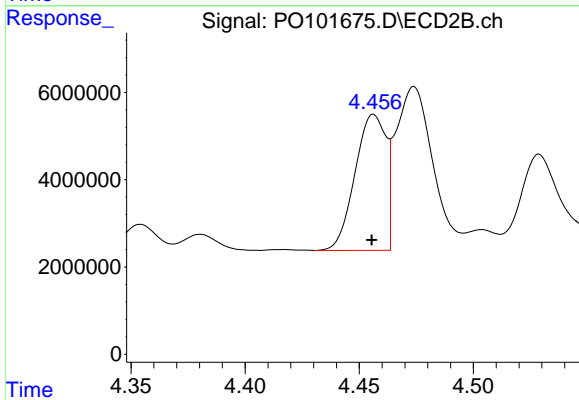
R.T.: 8.283 min
Delta R.T.: -0.001 min
Response: 94548900
Conc: 49.77 ng/ml



#16 AR-1242-1

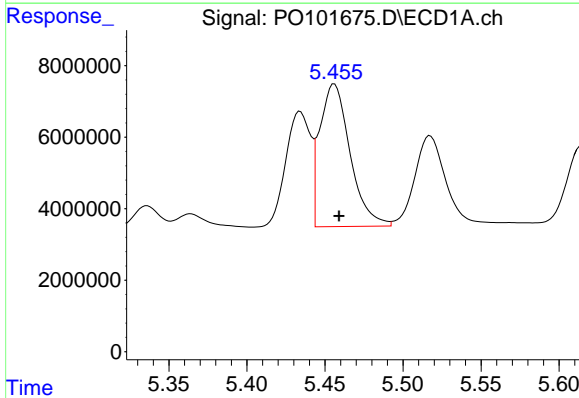
R.T.: 5.434 min
 Delta R.T.: -0.003 min
 Response: 35925921
 Conc: 488.39 ng/ml

Instrument :
 ECD_O
 ClientSampleId :
 ICVPO021024AR1242



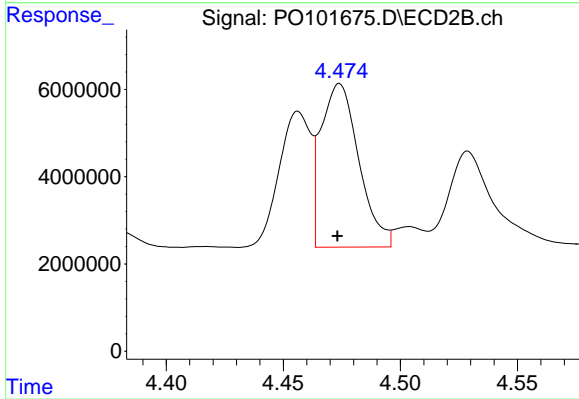
#16 AR-1242-1

R.T.: 4.456 min
 Delta R.T.: 0.000 min
 Response: 29448482
 Conc: 525.34 ng/ml



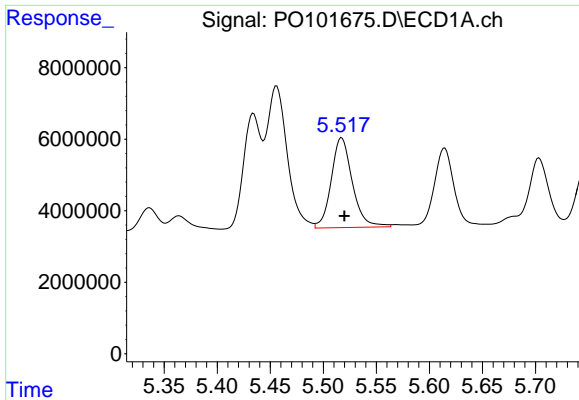
#17 AR-1242-2

R.T.: 5.456 min
 Delta R.T.: -0.003 min
 Response: 53924312
 Conc: 494.88 ng/ml



#17 AR-1242-2

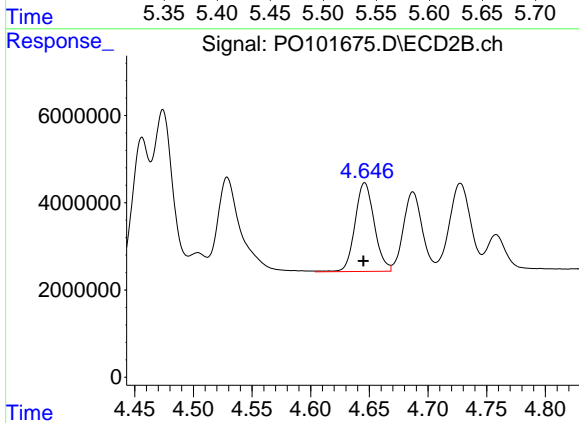
R.T.: 4.474 min
 Delta R.T.: 0.000 min
 Response: 42230876
 Conc: 534.73 ng/ml



#18 AR-1242-3

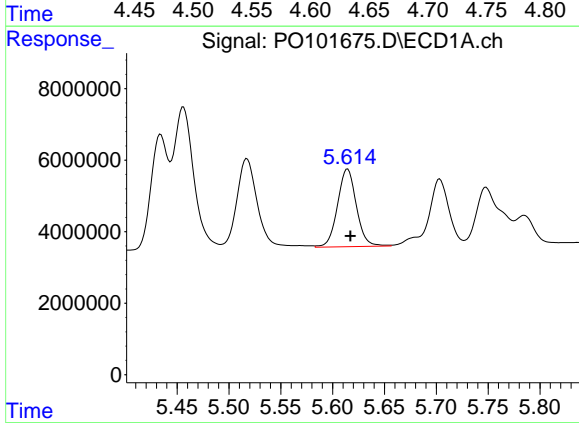
R.T.: 5.517 min
 Delta R.T.: -0.003 min
 Response: 34772922
 Conc: 492.94 ng/ml

Instrument :
 ECD_O
 ClientSampleId :
 ICVPO021024AR1242



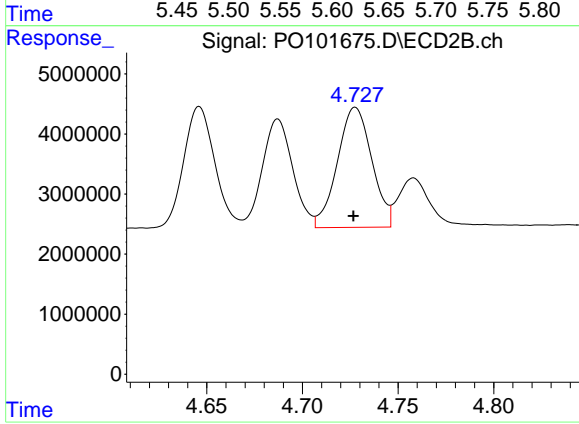
#18 AR-1242-3

R.T.: 4.646 min
 Delta R.T.: 0.001 min
 Response: 23274099
 Conc: 546.43 ng/ml



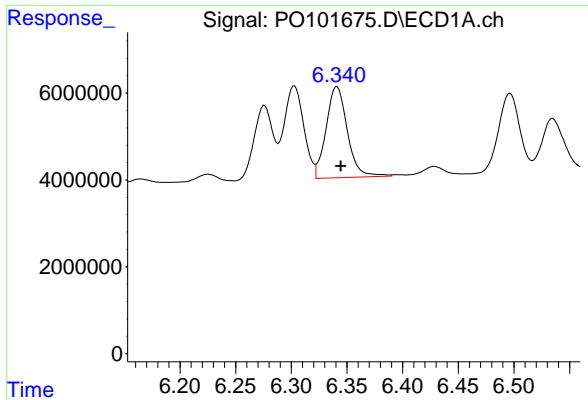
#19 AR-1242-4

R.T.: 5.614 min
 Delta R.T.: -0.003 min
 Response: 27593515
 Conc: 486.57 ng/ml



#19 AR-1242-4

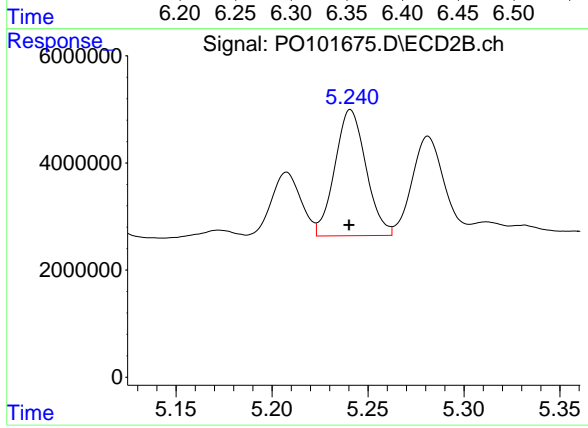
R.T.: 4.728 min
 Delta R.T.: 0.000 min
 Response: 25079739
 Conc: 541.52 ng/ml



#20 AR-1242-5

R.T.: 6.341 min
Delta R.T.: -0.003 min
Response: 27862549
Conc: 504.58 ng/ml

Instrument :
ECD_O
ClientSampleId :
ICVPO021024AR1242



#20 AR-1242-5

R.T.: 5.241 min
Delta R.T.: 0.000 min
Response: 26614083
Conc: 538.08 ng/ml