

Data Path : Z:\pestpcbsrv\HPCHEM1\ECD_0\Data\P0021224\
 Data File : P0101682.D
 Signal(s) : Signal #1: ECD1A.ch Signal #2: ECD2B.ch
 Acq On : 12 Feb 2024 10:39
 Operator : YP/AJ
 Sample : AR1248CCC500
 Misc :
 ALS Vial : 5 Sample Multiplier: 1

Instrument :
 ECD_0
ClientSampleId :
 AR1248CCC500

Integration File signal 1: autoint1.e
 Integration File signal 2: autoint2.e
 Quant Time: Feb 12 23:35:36 2024
 Quant Method : Z:\pestpcbsrv\HPCHEM1\ECD_0\methods\P0021024.M
 Quant Title : GC EXTRACTABLES
 QLast Update : Mon Feb 12 05:22:08 2024
 Response via : Initial Calibration
 Integrator: ChemStation

Volume Inj. : 2 µl
 Signal #1 Phase : ZB-MR1 Signal #2 Phase: ZB-MR2
 Signal #1 Info : 30Mx0.32mmx 0.50µ Signal #2 Info : 30M x 0.32mm x 0.25µm

Compound	RT#1	RT#2	Resp#1	Resp#2	ng/ml	ng/ml

System Monitoring Compounds						
1) SA Tetrachlo...	4.290	3.398	169.5E6	120.0E6	54.981	45.146
2) SA Decachlor...	9.850	8.279	112.9E6	88253500	53.838	46.453
Target Compounds						
21) L5 AR-1248-1	5.437	4.453	31990184	21522272	581.374	499.560
22) L5 AR-1248-2	5.706	4.684	51045160	33058207	545.343	499.061
23) L5 AR-1248-3	5.907	4.725	53459668	34416451	548.332	500.175
24) L5 AR-1248-4	6.307	4.893	51250051	39185414	559.593	499.192
25) L5 AR-1248-5	6.343	5.279	50718443	32235086	564.576	493.790

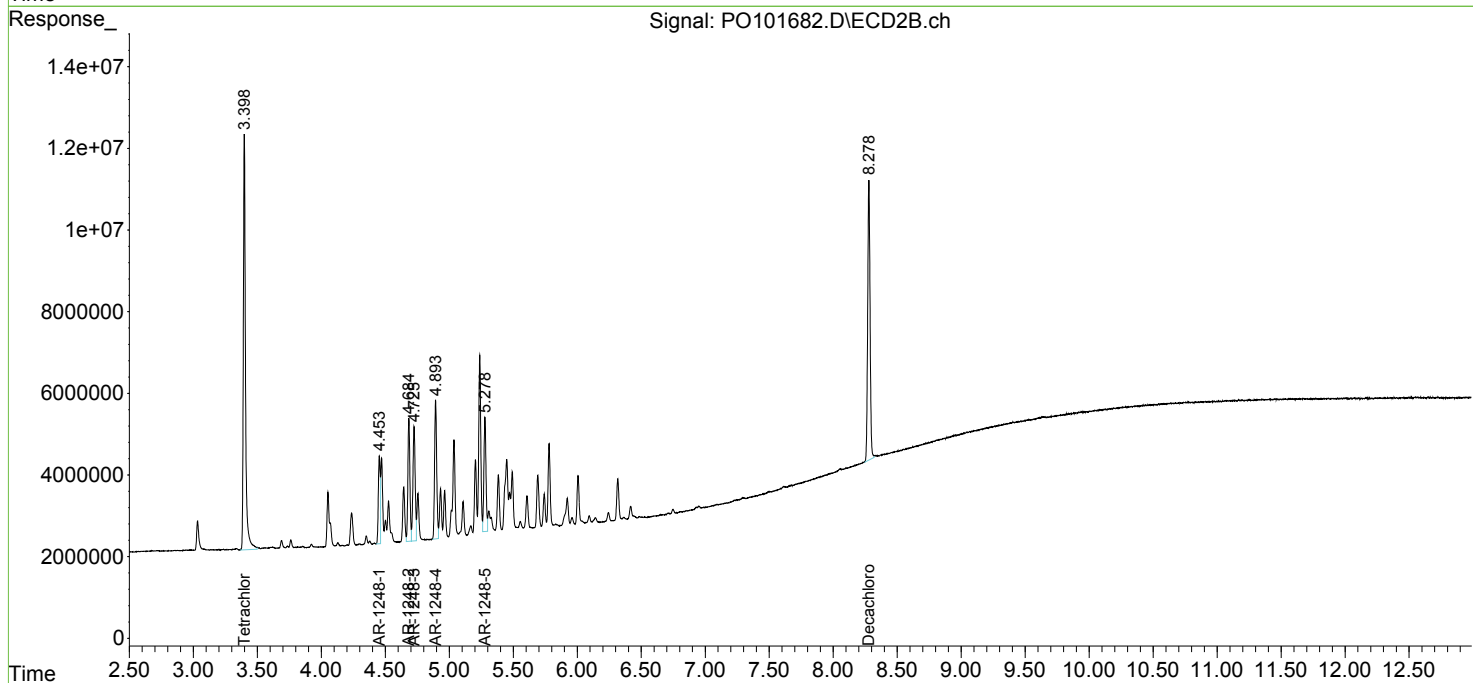
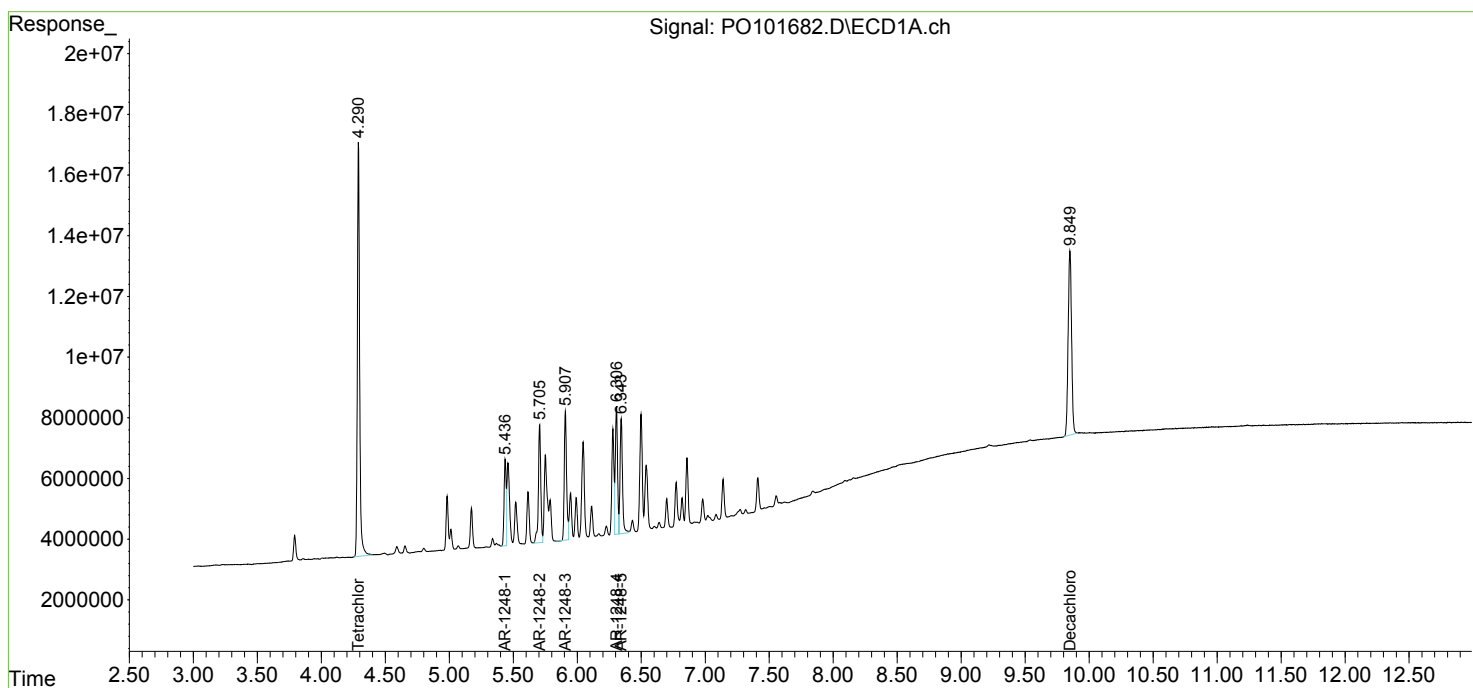
(f)=RT Delta > 1/2 Window (#)=Amounts differ by > 25% (m)=manual int.

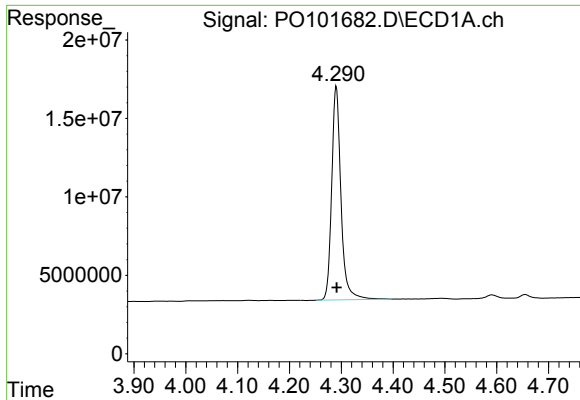
Data Path : Z:\pestpcbsrv\HPCHEM1\ECD_O\Data\PO021224\
 Data File : PO101682.D
 Signal(s) : Signal #1: ECD1A.ch Signal #2: ECD2B.ch
 Acq On : 12 Feb 2024 10:39
 Operator : YP/AJ
 Sample : AR1248CCC500
 Misc :
 ALS Vial : 5 Sample Multiplier: 1

Instrument :
 ECD_O
 ClientSampleId :
 AR1248CCC500

Integration File signal 1: autoint1.e
 Integration File signal 2: autoint2.e
 Quant Time: Feb 12 23:35:36 2024
 Quant Method : Z:\pestpcbsrv\HPCHEM1\ECD_O\methods\PO021024.M
 Quant Title : GC EXTRACTABLES
 QLast Update : Mon Feb 12 05:22:08 2024
 Response via : Initial Calibration
 Integrator: ChemStation

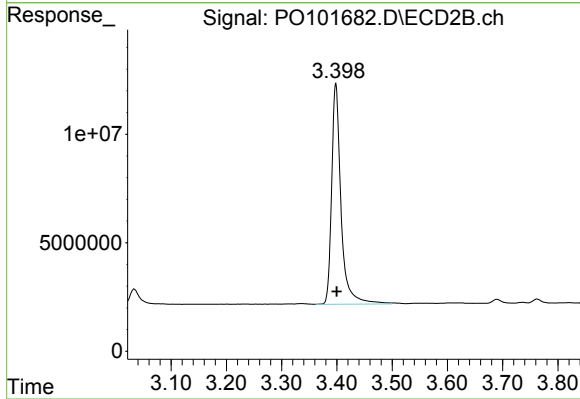
Volume Inj. : 2 µl
 Signal #1 Phase : ZB-MR1 Signal #2 Phase: ZB-MR2
 Signal #1 Info : 30Mx0.32mmx 0.50µ Signal #2 Info : 30M x 0.32mm x 0.25µm



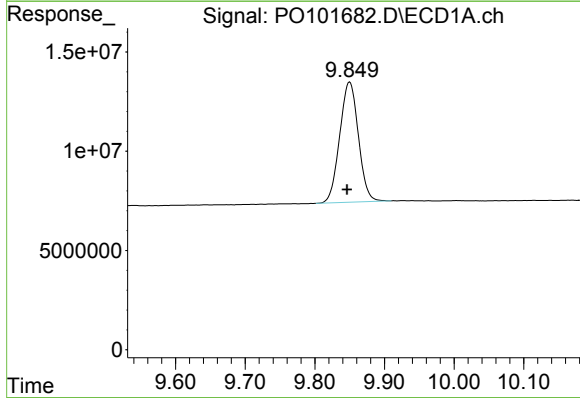


#1 Tetrachloro-m-xylene
 R.T.: 4.290 min
 Delta R.T.: 0.000 min
 Response: 169534100
 Conc: 54.98 ng/ml

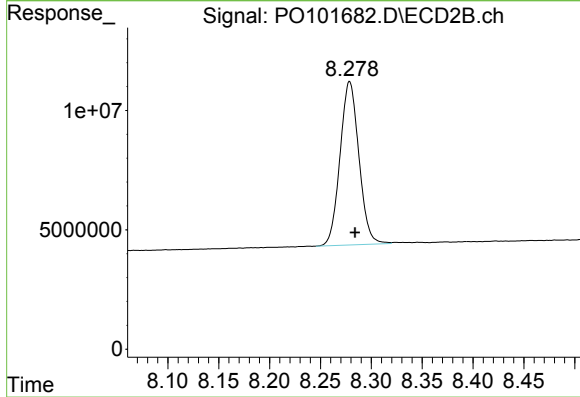
Instrument :
 ECD_O
 ClientSampleId :
 AR1248CCC500



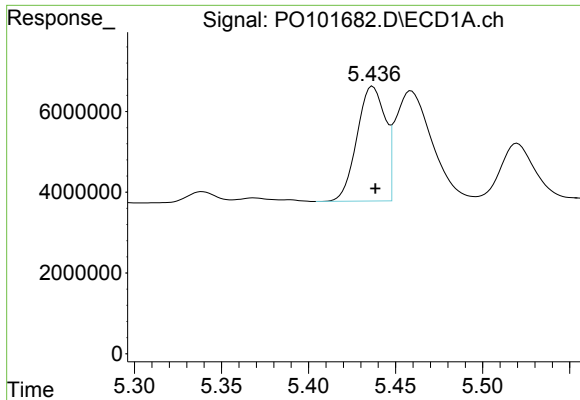
#1 Tetrachloro-m-xylene
 R.T.: 3.398 min
 Delta R.T.: -0.002 min
 Response: 120004063
 Conc: 45.15 ng/ml



#2 Decachlorobiphenyl
 R.T.: 9.850 min
 Delta R.T.: 0.004 min
 Response: 112894969
 Conc: 53.84 ng/ml



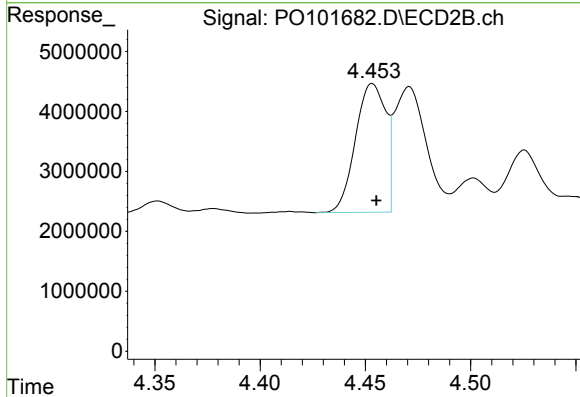
#2 Decachlorobiphenyl
 R.T.: 8.279 min
 Delta R.T.: -0.005 min
 Response: 88253500
 Conc: 46.45 ng/ml



#21 AR-1248-1

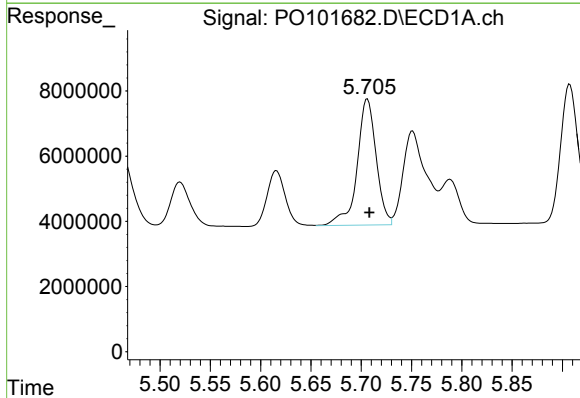
R.T.: 5.437 min
 Delta R.T.: -0.002 min
 Response: 31990184
 Conc: 581.37 ng/ml

Instrument :
 ECD_O
 ClientSampleId :
 AR1248CCC500



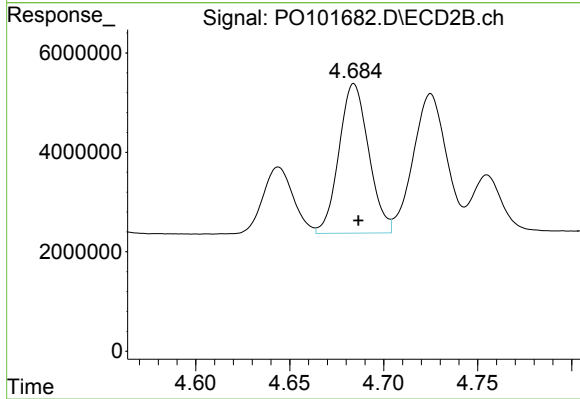
#21 AR-1248-1

R.T.: 4.453 min
 Delta R.T.: -0.002 min
 Response: 21522272
 Conc: 499.56 ng/ml



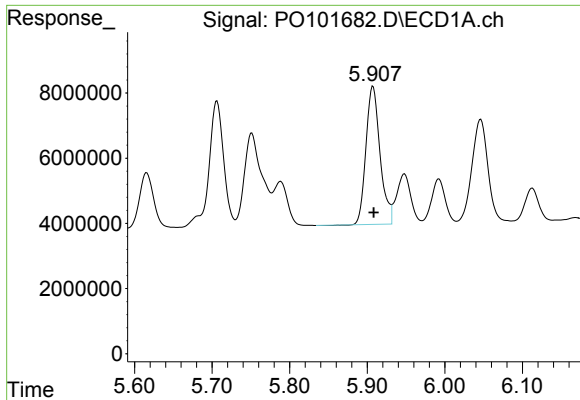
#22 AR-1248-2

R.T.: 5.706 min
 Delta R.T.: -0.002 min
 Response: 51045160
 Conc: 545.34 ng/ml



#22 AR-1248-2

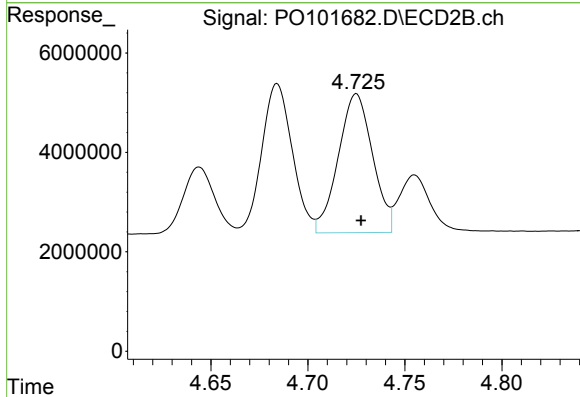
R.T.: 4.684 min
 Delta R.T.: -0.002 min
 Response: 33058207
 Conc: 499.06 ng/ml



#23 AR-1248-3

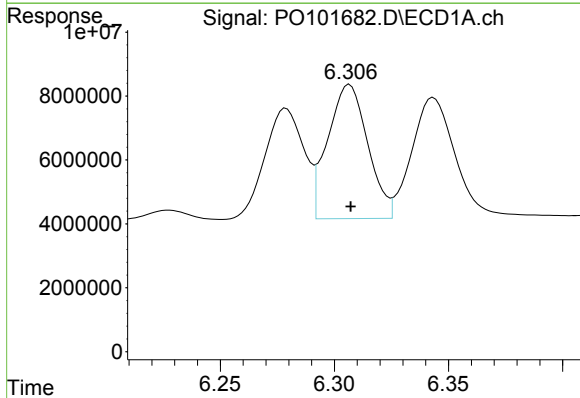
R.T.: 5.907 min
 Delta R.T.: -0.001 min
 Response: 53459668
 Conc: 548.33 ng/ml

Instrument :
 ECD_O
 ClientSampleId :
 AR1248CCC500



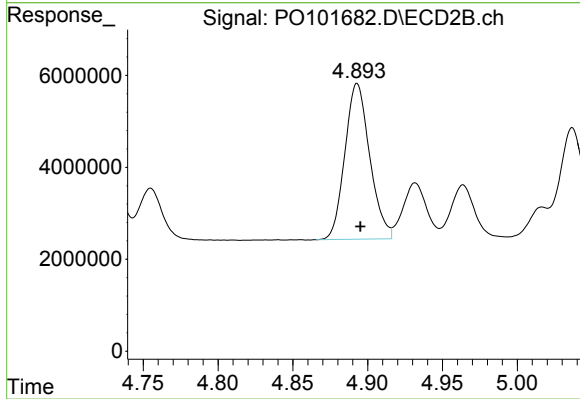
#23 AR-1248-3

R.T.: 4.725 min
 Delta R.T.: -0.003 min
 Response: 34416451
 Conc: 500.17 ng/ml



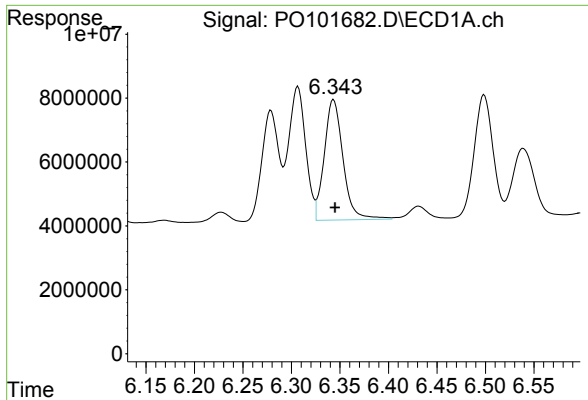
#24 AR-1248-4

R.T.: 6.307 min
 Delta R.T.: 0.000 min
 Response: 51250051
 Conc: 559.59 ng/ml



#24 AR-1248-4

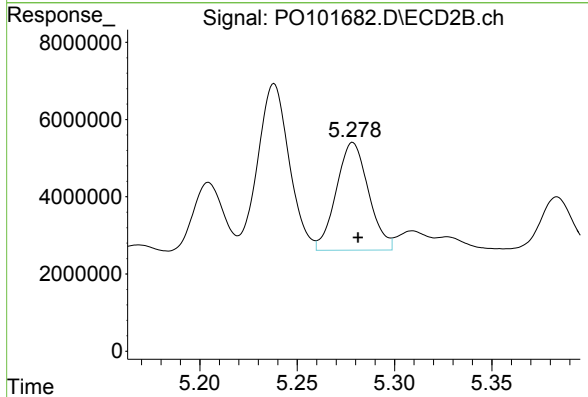
R.T.: 4.893 min
 Delta R.T.: -0.002 min
 Response: 39185414
 Conc: 499.19 ng/ml



#25 AR-1248-5

R.T.: 6.343 min
 Delta R.T.: -0.002 min
 Response: 50718443
 Conc: 564.58 ng/ml

Instrument :
 ECD_O
 ClientSampleId :
 AR1248CCC500



#25 AR-1248-5

R.T.: 5.279 min
 Delta R.T.: -0.003 min
 Response: 32235086
 Conc: 493.79 ng/ml