

Data Path : Z:\pestpcbsrv\HPCHEM1\ECD\_0\Data\P0021324\  
 Data File : P0101759.D  
 Signal(s) : Signal #1: ECD1A.ch Signal #2: ECD2B.ch  
 Acq On : 13 Feb 2024 21:55  
 Operator : YP/AJ  
 Sample : P1461-01  
 Misc :  
 ALS Vial : 17 Sample Multiplier: 1

Instrument :  
 ECD\_0  
 ClientSampleId :  
 TP-2

Integration File signal 1: autoint1.e  
 Integration File signal 2: autoint2.e  
 Quant Time: Feb 13 23:02:28 2024  
 Quant Method : Z:\pestpcbsrv\HPCHEM1\ECD\_0\methods\P0021024.M  
 Quant Title : GC EXTRACTABLES  
 QLast Update : Mon Feb 12 05:22:08 2024  
 Response via : Initial Calibration  
 Integrator: ChemStation

Volume Inj. : 2 µl  
 Signal #1 Phase : ZB-MR2 Signal #2 Phase: ZB-MR2  
 Signal #1 Info : 30Mx0.32mmx 0.50µ Signal #2 Info : 30M x 0.32mm x 0.25µm

Compound	RT#1	RT#2	Resp#1	Resp#2	ng/ml	ng/ml
-----						
System Monitoring Compounds						
1) SA Tetrachlo...	4.287	3.398	65181106	55273951	21.139	20.794
2) SA Decachlor...	9.845	8.280	40622988	33410618	19.373	17.586
Target Compounds						
3) L1 AR-1016-1	5.422	4.452	296896	692002	3.011	9.485 #
4) L1 AR-1016-2	5.456	4.467	925363	300779	6.365	2.851 #
5) L1 AR-1016-3	5.519	4.641	725062	1065510	7.618	18.573 #
6) L1 AR-1016-4	5.620	4.698	318540	307204	4.175	6.102 #
7) L1 AR-1016-5	5.909	4.911	52368	23072	0.660	0.365 #
8) L2 AR-1221-1	4.492	3.607	830177	161619	26.355	5.925 #
9) L2 AR-1221-2	4.587	3.689	1015514	1699123	42.819	86.823 #
10) L2 AR-1221-3	4.652	3.766	55449	56034	0.777	0.920
11) L3 AR-1232-1	4.652	3.766	55449	56034	0.869	1.037
12) L3 AR-1232-2	5.172	4.467	542623	300779	14.133	6.102 #
13) L3 AR-1232-3	5.456	4.641	925363	1065510	13.380	41.504 #
14) L3 AR-1232-4	5.620	4.723	318540	259917	8.759	10.227
15) L3 AR-1232-5	5.701	4.911	449316	23072	14.309	0.875 #
16) L4 AR-1242-1	5.422	4.452	296896	692002	4.036	12.345 #
17) L4 AR-1242-2	5.456	4.467	925363	300779	8.492	3.808 #
18) L4 AR-1242-3	5.519	4.641	725062	1065510	10.278	25.016 #
19) L4 AR-1242-4	5.620	4.723	318540	259917	5.617	5.612
20) L4 AR-1242-5	6.349	5.229	650604	737668	11.782	14.914 #
21) L5 AR-1248-1	5.422	4.452	296896	692002	5.396	16.062 #
22) L5 AR-1248-2	5.701	4.698	449316	307204	4.800	4.638
23) L5 AR-1248-3	5.909	4.723	52368	259917	0.537	3.777 #
24) L5 AR-1248-4	6.304	4.911	240379	23072	2.625	0.294 #
25) L5 AR-1248-5	6.349	5.329f	650604	1909046	7.242	29.244 #
26) L6 AR-1254-1	6.281	5.229	254519	737668	2.291	6.347 #
27) L6 AR-1254-2	6.491	5.382	640293	506160	3.896	4.788
28) L6 AR-1254-3	6.864	5.800	724931	3000177	4.503	18.556 #
29) L6 AR-1254-4	7.151	5.981	140749	247034	1.420	2.938 #
30) L6 AR-1254-5	7.559	6.421	1276278	244772	10.655	1.827 #
31) L7 AR-1260-1	7.020	5.915	903095	868805	6.880	7.037
32) L7 AR-1260-2	7.279	6.087	301097	1981460	2.113	13.726 #
33) L7 AR-1260-3	7.627	6.252	52391	533207	0.498	4.080 #
34) L7 AR-1260-4	7.835	6.730	1171991	162503	10.493	1.473 #
35) L7 AR-1260-5	8.163	6.954	793996	600955	3.619	2.542 #
36) L8 AR-1262-1	7.559	6.421	1276278	244772	10.574	2.919 #
37) L8 AR-1262-2	8.163	6.730	793996	162503	2.577	1.068 #
38) L8 AR-1262-3	8.486f	7.241	503013	999858	2.383	8.451 #
39) L8 AR-1262-4	8.539	7.297	937136	458829	5.451	2.135 #
40) L8 AR-1262-5	9.150	0.000	51861	0	0.503	N.D. #
41) L9 AR-1268-1	8.486f	7.241	503013	999858	1.460	3.220 #

Data Path : Z:\pestpcbsrv\HPCHEM1\ECD\_0\Data\P0021324\  
 Data File : P0101759.D  
 Signal(s) : Signal #1: ECD1A.ch Signal #2: ECD2B.ch  
 Acq On : 13 Feb 2024 21:55  
 Operator : YP/AJ  
 Sample : P1461-01  
 Misc :  
 ALS Vial : 17 Sample Multiplier: 1

Instrument :  
 ECD\_0  
 ClientSampleId :  
 TP-2

Integration File signal 1: autoint1.e  
 Integration File signal 2: autoint2.e  
 Quant Time: Feb 13 23:02:28 2024  
 Quant Method : Z:\pestpcbsrv\HPCHEM1\ECD\_0\methods\P0021024.M  
 Quant Title : GC EXTRACTABLES  
 QLast Update : Mon Feb 12 05:22:08 2024  
 Response via : Initial Calibration  
 Integrator: ChemStation

Volume Inj. : 2 µl  
 Signal #1 Phase : ZB-MR1 Signal #2 Phase: ZB-MR2  
 Signal #1 Info : 30Mx0.32mmx 0.50µ Signal #2 Info : 30M x 0.32mm x 0.25µm

	Compound	RT#1	RT#2	Resp#1	Resp#2	ng/ml	ng/ml
42)	L9 AR-1268-2	8.539	7.297	937136	458829	2.818	1.620 #
43)	L9 AR-1268-3	8.756	7.499	533805	151008	1.952	0.638 #
44)	L9 AR-1268-4	9.150	8.052	51861	494218	0.518	0.686 #
45)	L9 AR-1268-5	9.537	8.280	322978	33410618	0.368	97.678 #

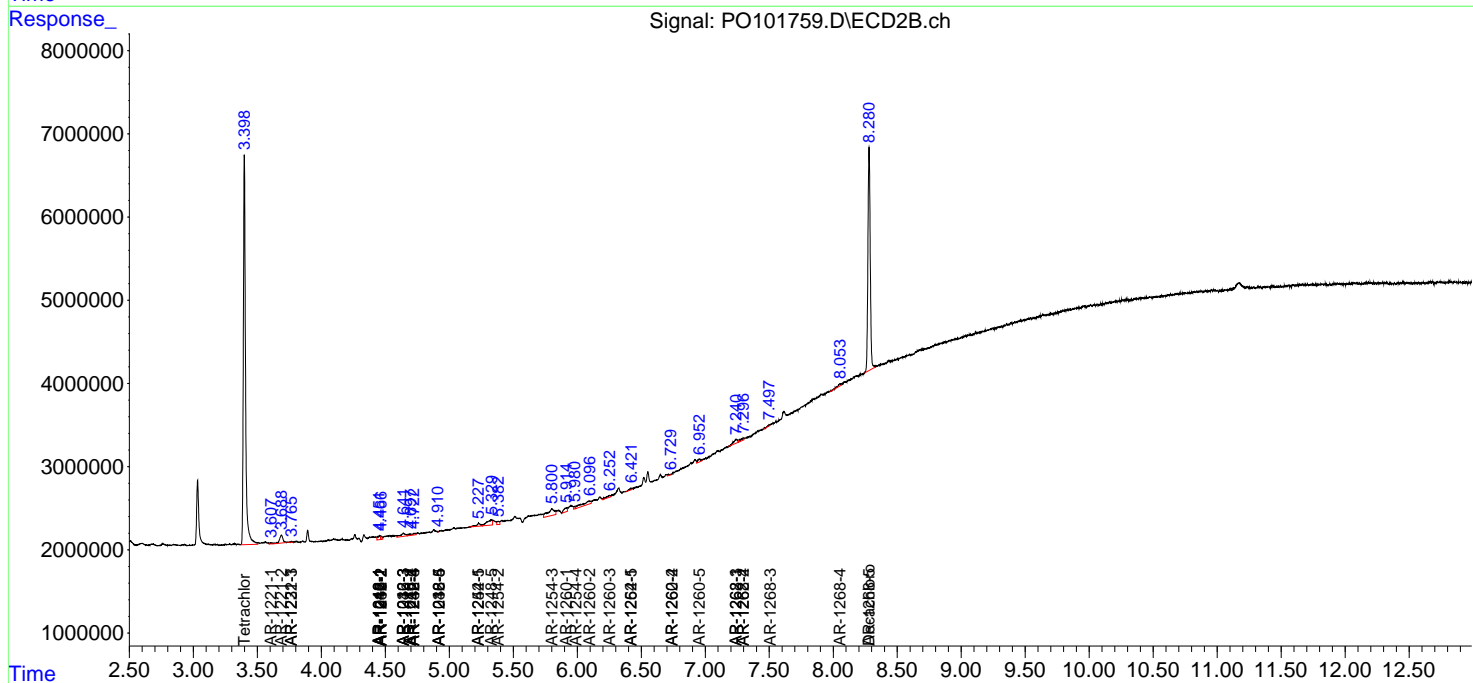
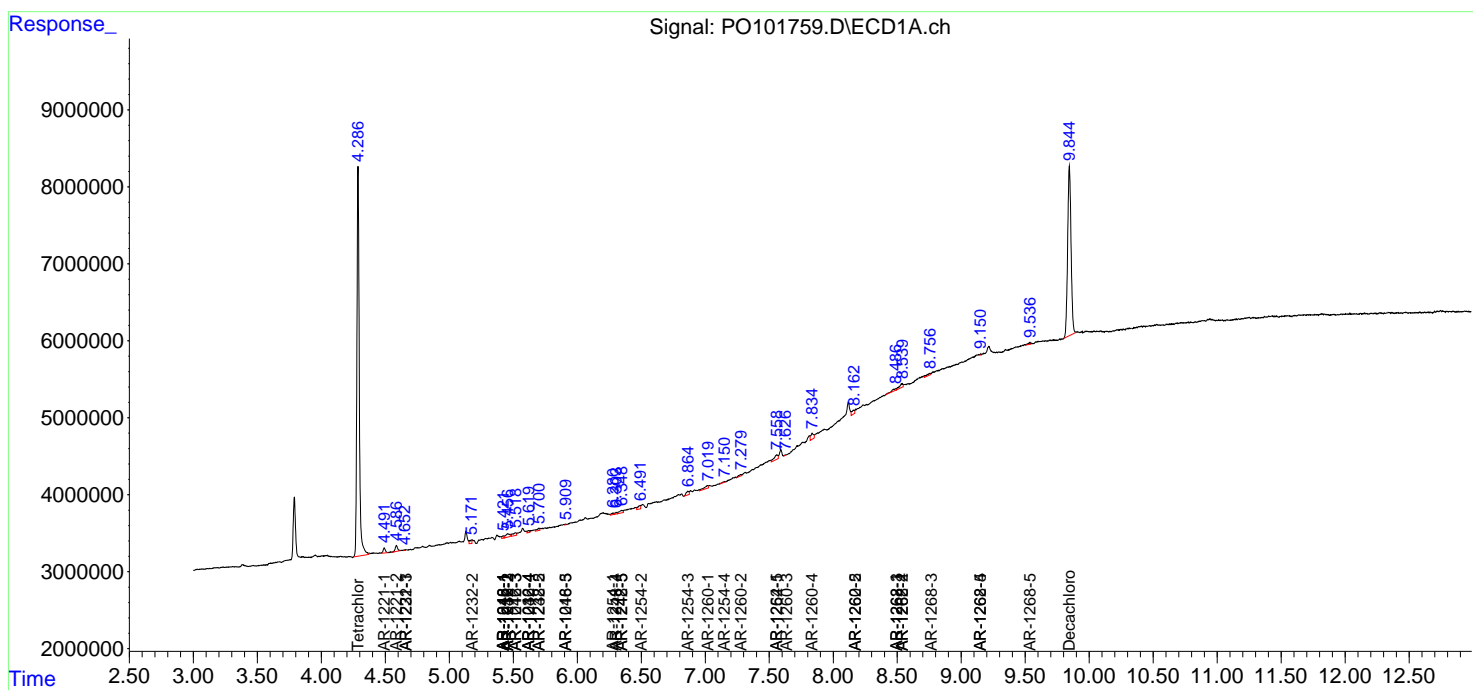
(f)=RT Delta > 1/2 Window (#)=Amounts differ by > 25% (m)=manual int.

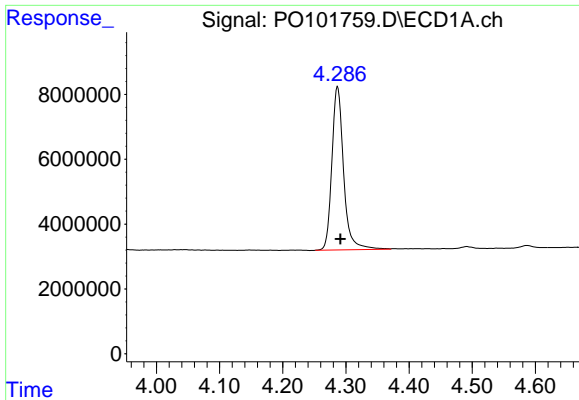
Data Path : Z:\pestpcbsrv\HPCHEM1\ECD\_O\Data\PO021324\  
 Data File : PO101759.D  
 Signal(s) : Signal #1: ECD1A.ch Signal #2: ECD2B.ch  
 Acq On : 13 Feb 2024 21:55  
 Operator : YP/AJ  
 Sample : P1461-01  
 Misc :  
 ALS Vial : 17 Sample Multiplier: 1

Instrument :  
 ECD\_O  
 ClientSampleId :  
 TP-2

Integration File signal 1: autoint1.e  
 Integration File signal 2: autoint2.e  
 Quant Time: Feb 13 23:02:28 2024  
 Quant Method : Z:\pestpcbsrv\HPCHEM1\ECD\_O\methods\PO021024.M  
 Quant Title : GC EXTRACTABLES  
 QLast Update : Mon Feb 12 05:22:08 2024  
 Response via : Initial Calibration  
 Integrator: ChemStation

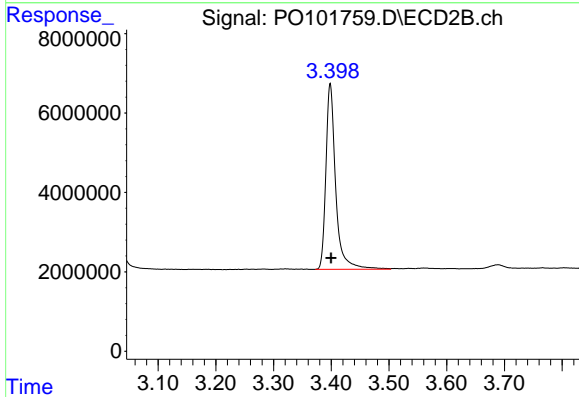
Volume Inj. : 2 µl  
 Signal #1 Phase : ZB-MR1 Signal #2 Phase: ZB-MR2  
 Signal #1 Info : 30Mx0.32mmx 0.50µ Signal #2 Info : 30M x 0.32mm x 0.25µm



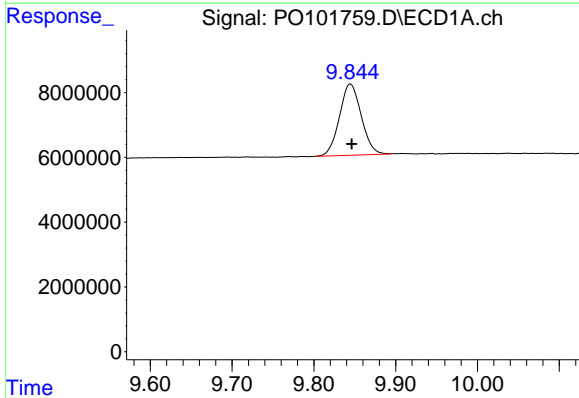


#1 Tetrachloro-m-xylene  
 R.T.: 4.287 min  
 Delta R.T.: -0.004 min  
 Response: 65181106  
 Conc: 21.14 ng/ml

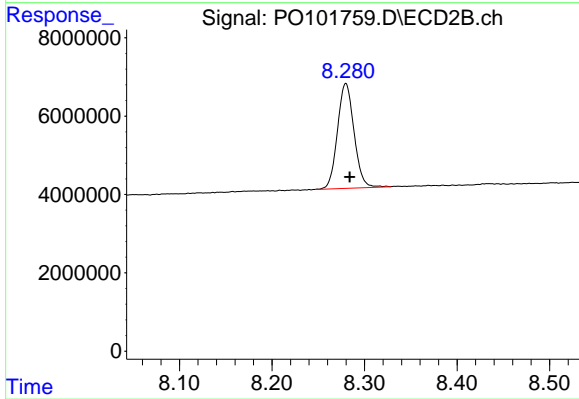
Instrument :  
 ECD\_O  
 ClientSampleId :  
 TP-2



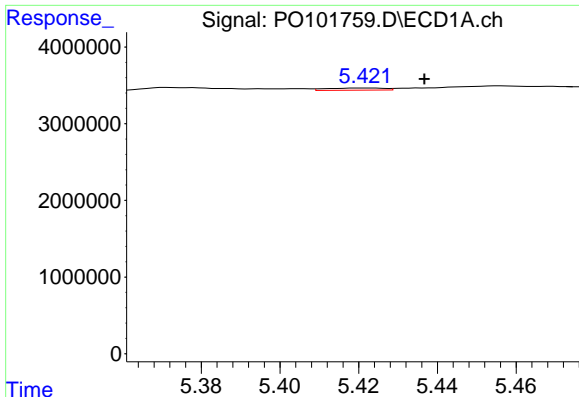
#1 Tetrachloro-m-xylene  
 R.T.: 3.398 min  
 Delta R.T.: -0.002 min  
 Response: 55273951  
 Conc: 20.79 ng/ml



#2 Decachlorobiphenyl  
 R.T.: 9.845 min  
 Delta R.T.: -0.002 min  
 Response: 40622988  
 Conc: 19.37 ng/ml



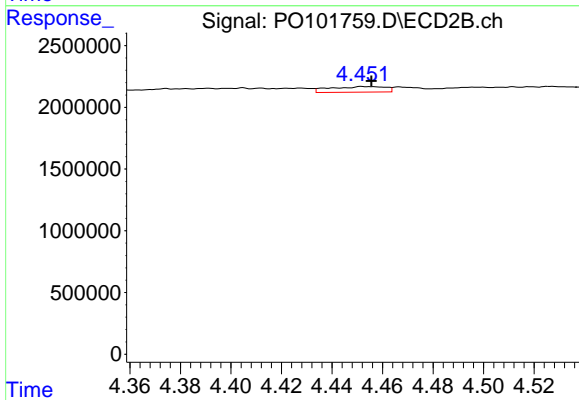
#2 Decachlorobiphenyl  
 R.T.: 8.280 min  
 Delta R.T.: -0.004 min  
 Response: 33410618  
 Conc: 17.59 ng/ml



#3 AR-1016-1

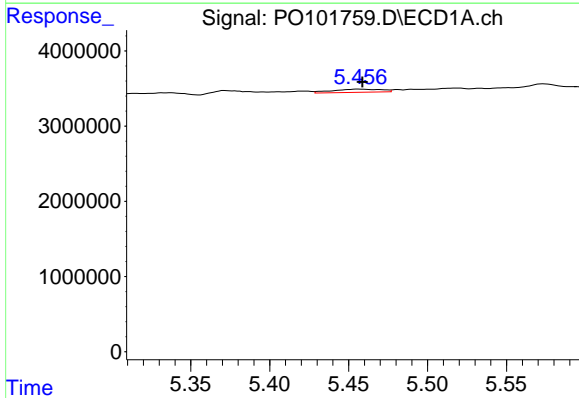
R.T.: 5.422 min  
 Delta R.T.: -0.015 min  
 Response: 296896  
 Conc: 3.01 ng/ml

Instrument :  
 ECD\_O  
 ClientSampleId :  
 TP-2



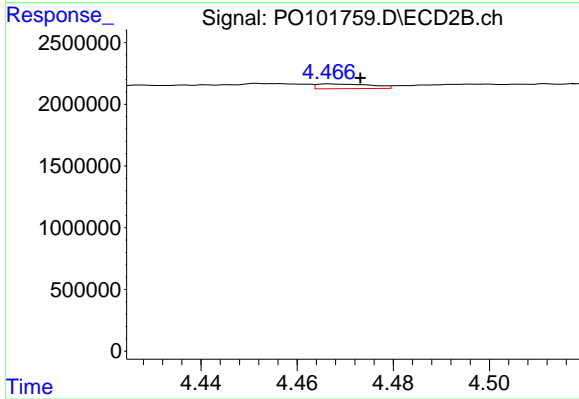
#3 AR-1016-1

R.T.: 4.452 min  
 Delta R.T.: -0.003 min  
 Response: 692002  
 Conc: 9.48 ng/ml



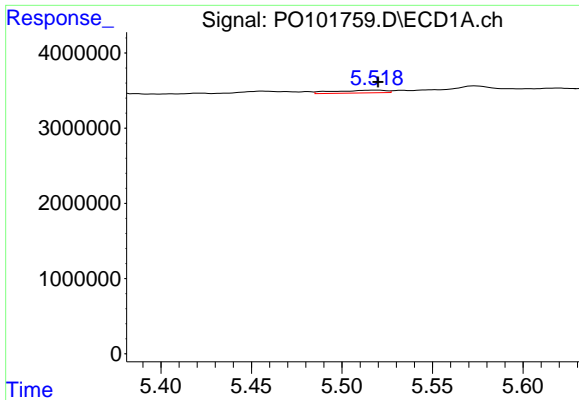
#4 AR-1016-2

R.T.: 5.456 min  
 Delta R.T.: -0.002 min  
 Response: 925363  
 Conc: 6.37 ng/ml



#4 AR-1016-2

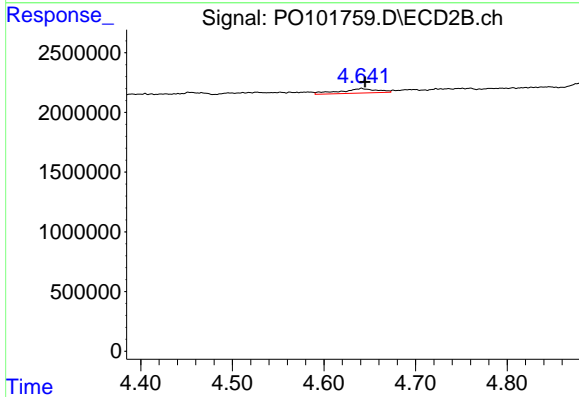
R.T.: 4.467 min  
 Delta R.T.: -0.006 min  
 Response: 300779  
 Conc: 2.85 ng/ml



#5 AR-1016-3

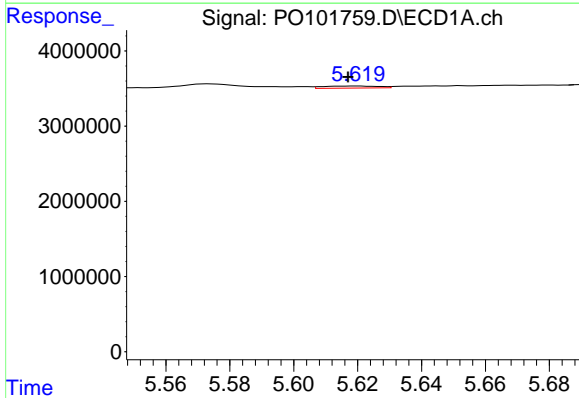
R.T.: 5.519 min  
 Delta R.T.: -0.001 min  
 Response: 725062  
 Conc: 7.62 ng/ml

Instrument :  
 ECD\_O  
 ClientSampleId :  
 TP-2



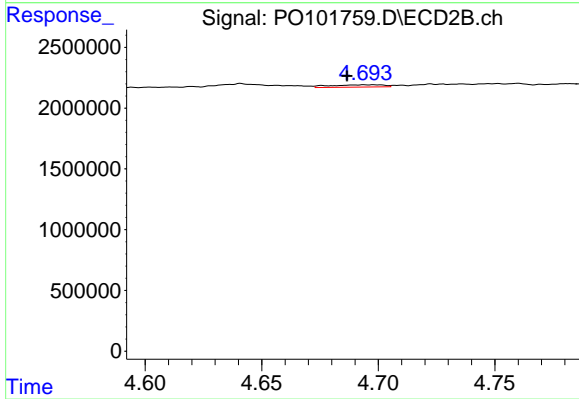
#5 AR-1016-3

R.T.: 4.641 min  
 Delta R.T.: -0.004 min  
 Response: 1065510  
 Conc: 18.57 ng/ml



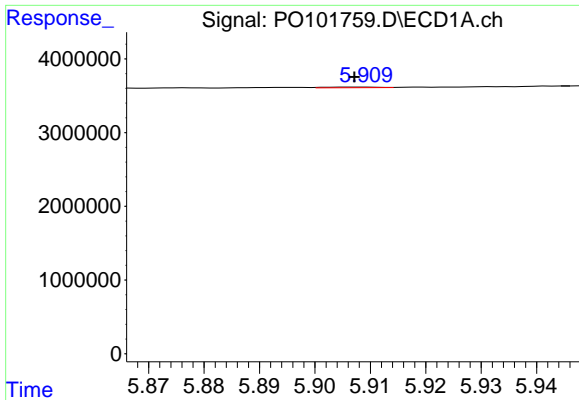
#6 AR-1016-4

R.T.: 5.620 min  
 Delta R.T.: 0.003 min  
 Response: 318540  
 Conc: 4.18 ng/ml



#6 AR-1016-4

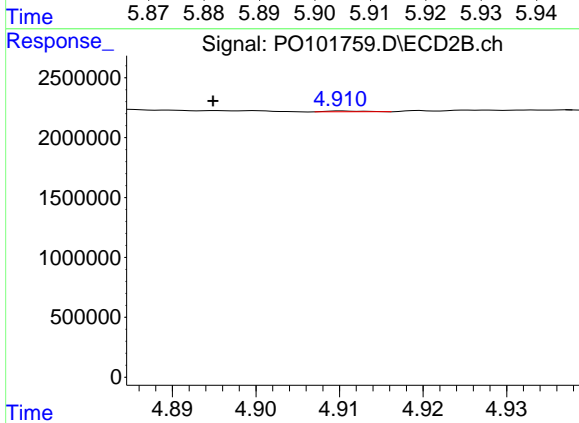
R.T.: 4.698 min  
 Delta R.T.: 0.012 min  
 Response: 307204  
 Conc: 6.10 ng/ml



#7 AR-1016-5

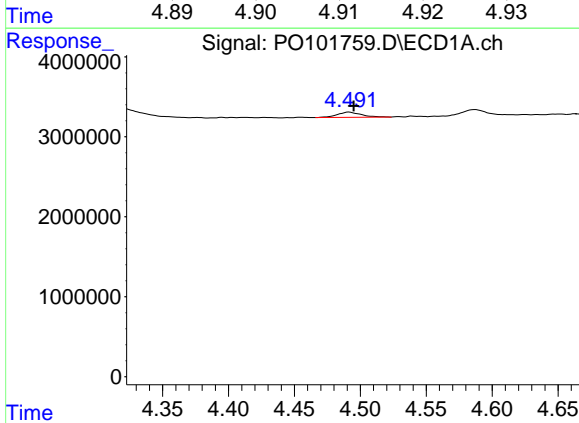
R.T.: 5.909 min  
 Delta R.T.: 0.002 min  
 Response: 52368  
 Conc: 0.66 ng/ml

Instrument :  
 ECD\_O  
 ClientSampleId :  
 TP-2



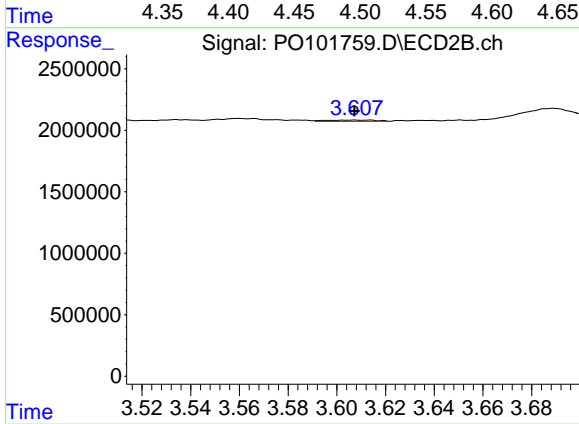
#7 AR-1016-5

R.T.: 4.911 min  
 Delta R.T.: 0.016 min  
 Response: 23072  
 Conc: 0.36 ng/ml



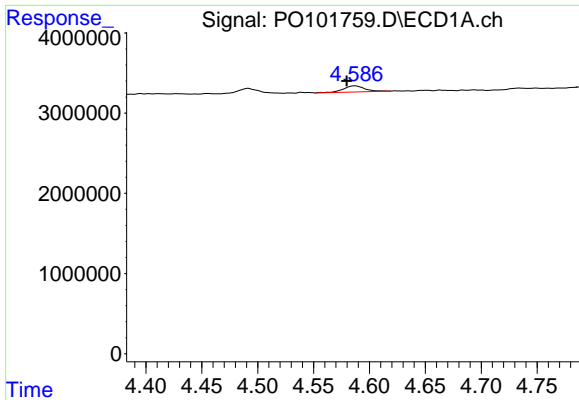
#8 AR-1221-1

R.T.: 4.492 min  
 Delta R.T.: -0.003 min  
 Response: 830177  
 Conc: 26.35 ng/ml



#8 AR-1221-1

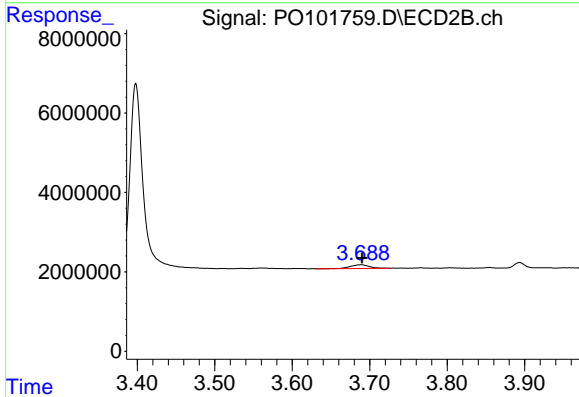
R.T.: 3.607 min  
 Delta R.T.: 0.000 min  
 Response: 161619  
 Conc: 5.93 ng/ml



#9 AR-1221-2

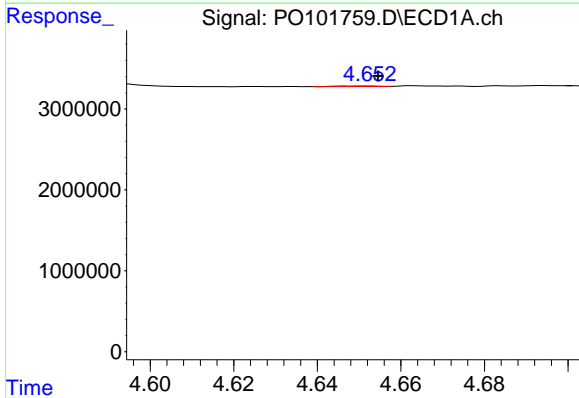
R.T.: 4.587 min  
 Delta R.T.: 0.007 min  
 Response: 1015514  
 Conc: 42.82 ng/ml

Instrument :  
 ECD\_O  
 ClientSampleId :  
 TP-2



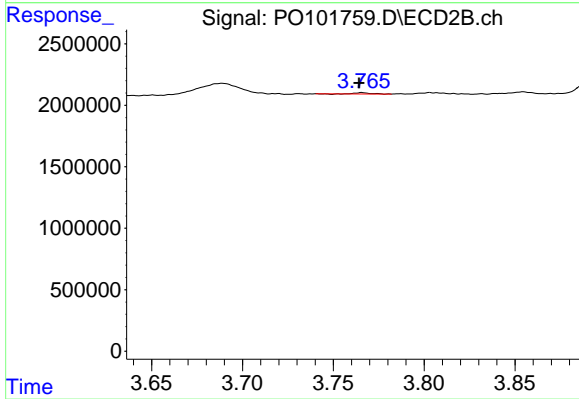
#9 AR-1221-2

R.T.: 3.689 min  
 Delta R.T.: -0.001 min  
 Response: 1699123  
 Conc: 86.82 ng/ml



#10 AR-1221-3

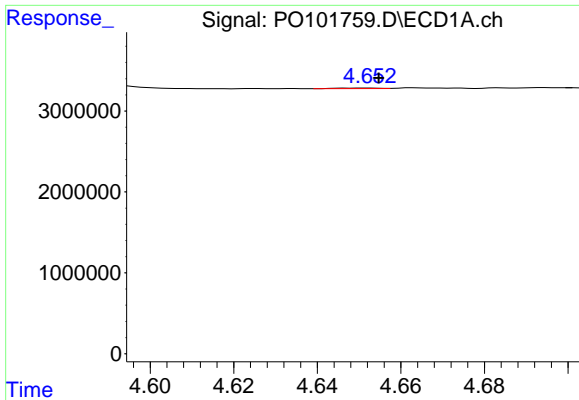
R.T.: 4.652 min  
 Delta R.T.: -0.003 min  
 Response: 55449  
 Conc: 0.78 ng/ml



#10 AR-1221-3

R.T.: 3.766 min  
 Delta R.T.: 0.002 min  
 Response: 56034  
 Conc: 0.92 ng/ml

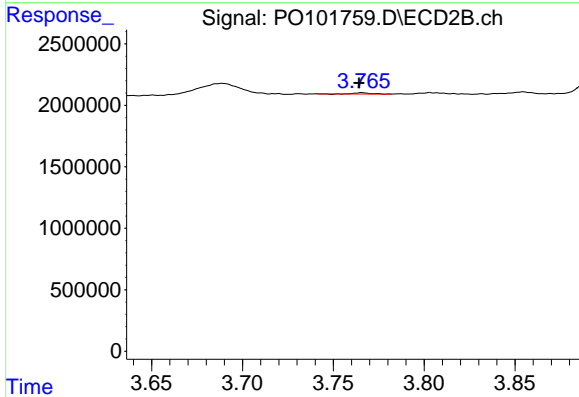




#11 AR-1232-1

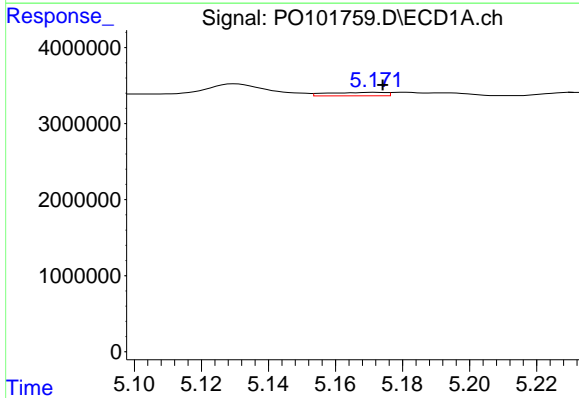
R.T.: 4.652 min  
 Delta R.T.: -0.003 min  
 Response: 55449  
 Conc: 0.87 ng/ml

Instrument :  
 ECD\_O  
 ClientSampleId :  
 TP-2



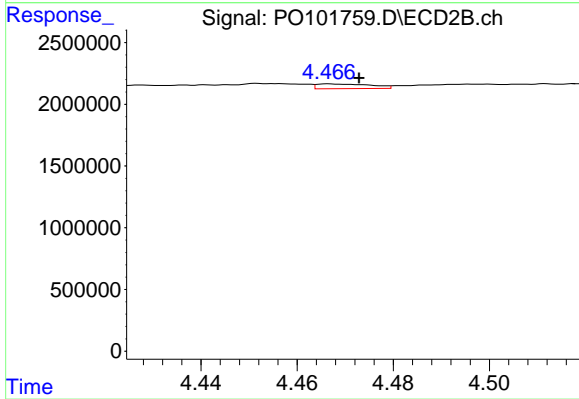
#11 AR-1232-1

R.T.: 3.766 min  
 Delta R.T.: 0.002 min  
 Response: 56034  
 Conc: 1.04 ng/ml



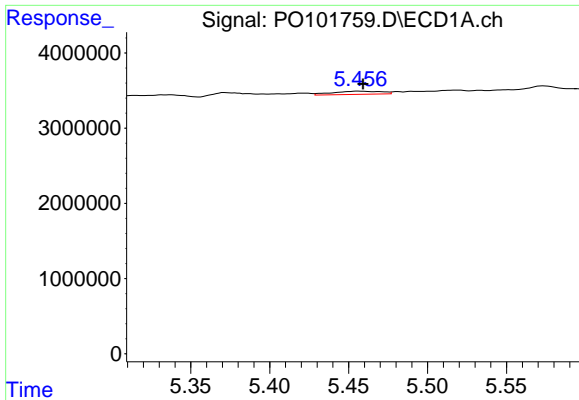
#12 AR-1232-2

R.T.: 5.172 min  
 Delta R.T.: -0.002 min  
 Response: 542623  
 Conc: 14.13 ng/ml



#12 AR-1232-2

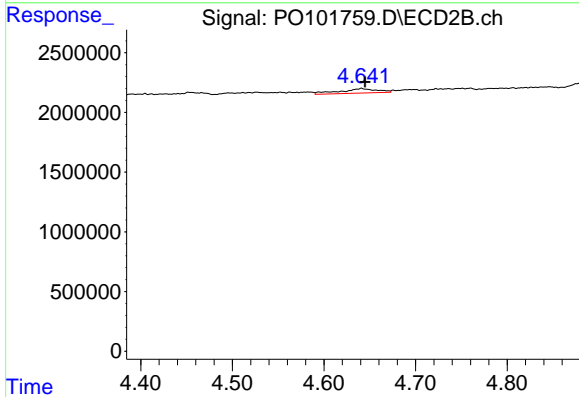
R.T.: 4.467 min  
 Delta R.T.: -0.006 min  
 Response: 300779  
 Conc: 6.10 ng/ml



#13 AR-1232-3

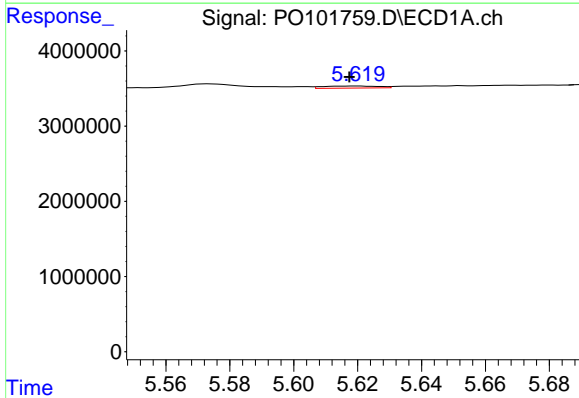
R.T.: 5.456 min  
 Delta R.T.: -0.003 min  
 Response: 925363  
 Conc: 13.38 ng/ml

Instrument :  
 ECD\_O  
 ClientSampleId :  
 TP-2



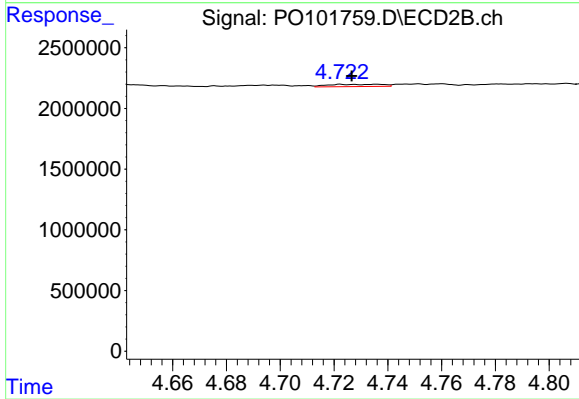
#13 AR-1232-3

R.T.: 4.641 min  
 Delta R.T.: -0.004 min  
 Response: 1065510  
 Conc: 41.50 ng/ml



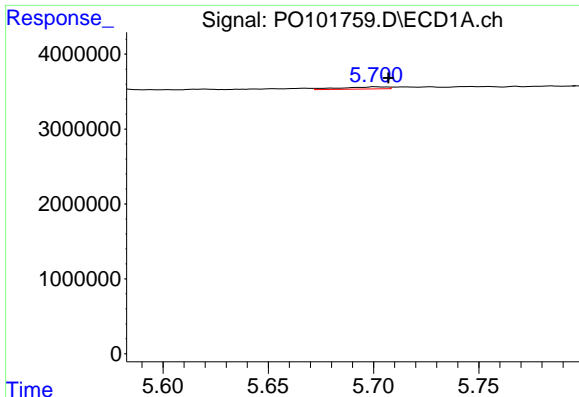
#14 AR-1232-4

R.T.: 5.620 min  
 Delta R.T.: 0.003 min  
 Response: 318540  
 Conc: 8.76 ng/ml



#14 AR-1232-4

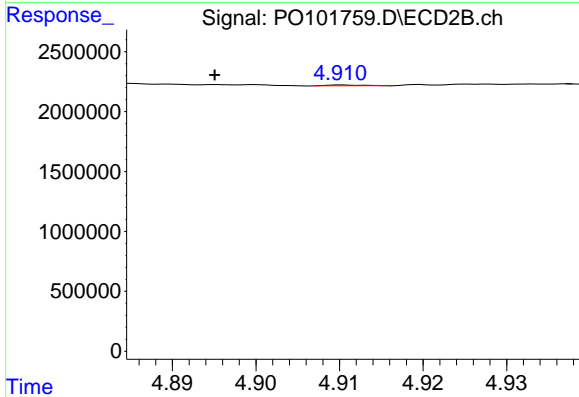
R.T.: 4.723 min  
 Delta R.T.: -0.004 min  
 Response: 259917  
 Conc: 10.23 ng/ml



#15 AR-1232-5

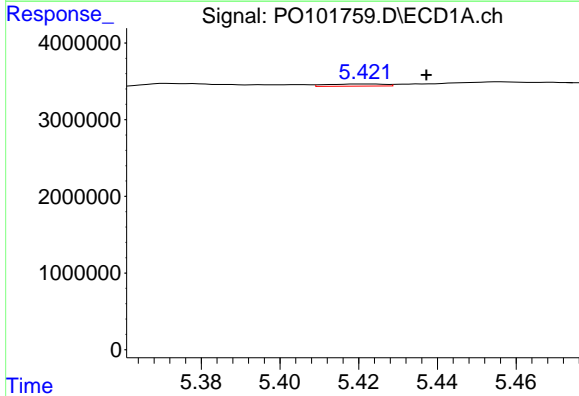
R.T.: 5.701 min  
 Delta R.T.: -0.006 min  
 Response: 449316  
 Conc: 14.31 ng/ml

Instrument :  
 ECD\_O  
 ClientSampleId :  
 TP-2



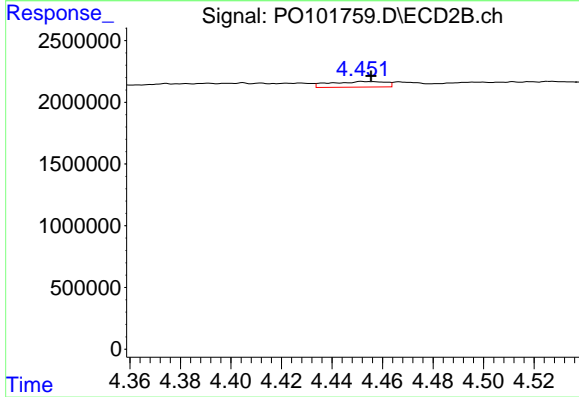
#15 AR-1232-5

R.T.: 4.911 min  
 Delta R.T.: 0.016 min  
 Response: 23072  
 Conc: 0.87 ng/ml



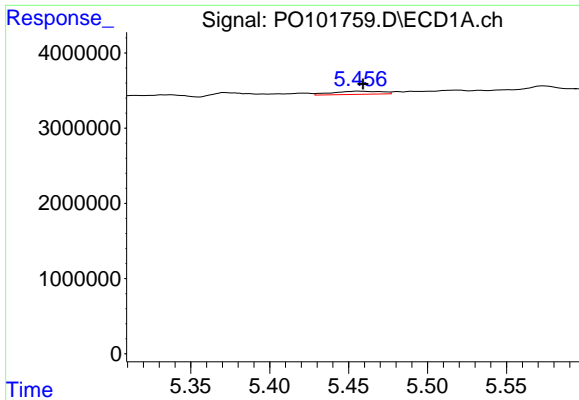
#16 AR-1242-1

R.T.: 5.422 min  
 Delta R.T.: -0.016 min  
 Response: 296896  
 Conc: 4.04 ng/ml



#16 AR-1242-1

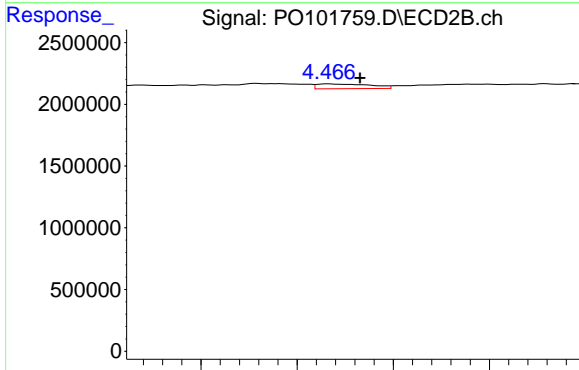
R.T.: 4.452 min  
 Delta R.T.: -0.003 min  
 Response: 692002  
 Conc: 12.34 ng/ml



#17 AR-1242-2

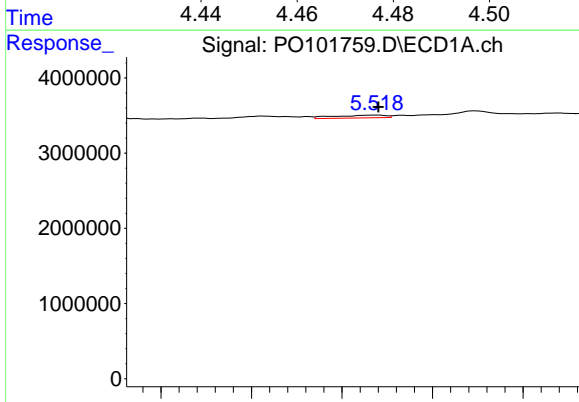
R.T.: 5.456 min  
 Delta R.T.: -0.003 min  
 Response: 925363  
 Conc: 8.49 ng/ml

Instrument :  
 ECD\_O  
 ClientSampleId :  
 TP-2



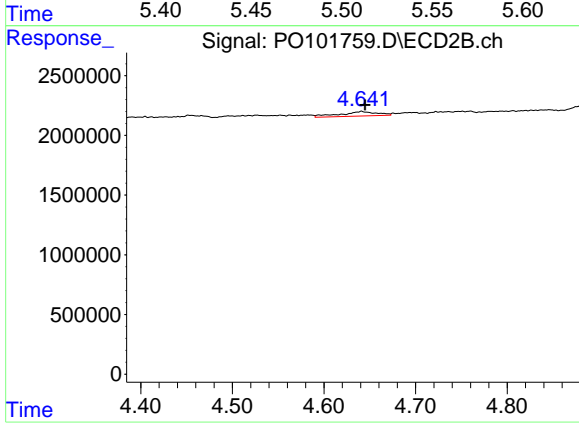
#17 AR-1242-2

R.T.: 4.467 min  
 Delta R.T.: -0.006 min  
 Response: 300779  
 Conc: 3.81 ng/ml



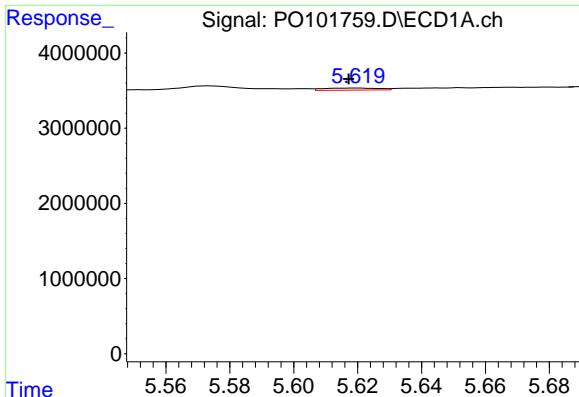
#18 AR-1242-3

R.T.: 5.519 min  
 Delta R.T.: -0.001 min  
 Response: 725062  
 Conc: 10.28 ng/ml



#18 AR-1242-3

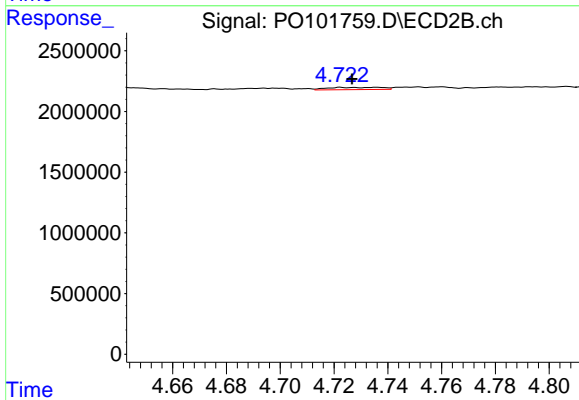
R.T.: 4.641 min  
 Delta R.T.: -0.004 min  
 Response: 1065510  
 Conc: 25.02 ng/ml



#19 AR-1242-4

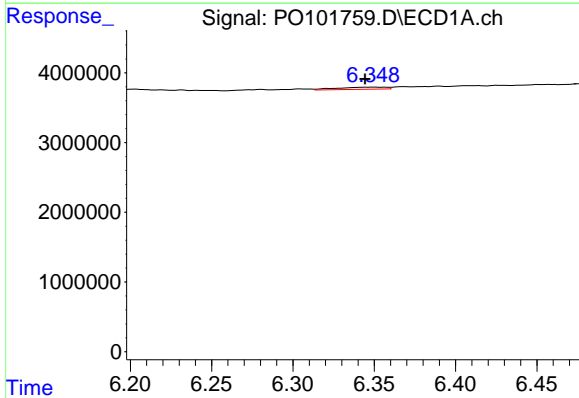
R.T.: 5.620 min  
 Delta R.T.: 0.003 min  
 Response: 318540  
 Conc: 5.62 ng/ml

Instrument :  
 ECD\_O  
 ClientSampleId :  
 TP-2



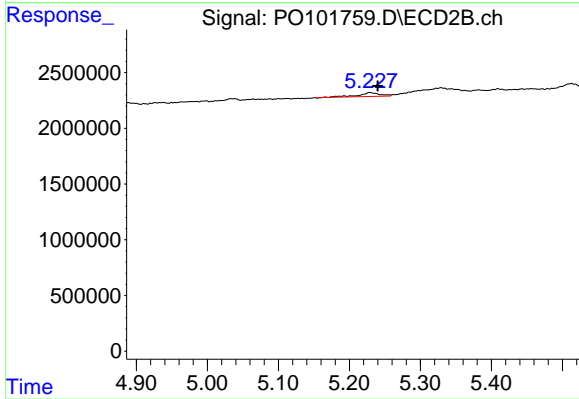
#19 AR-1242-4

R.T.: 4.723 min  
 Delta R.T.: -0.004 min  
 Response: 259917  
 Conc: 5.61 ng/ml



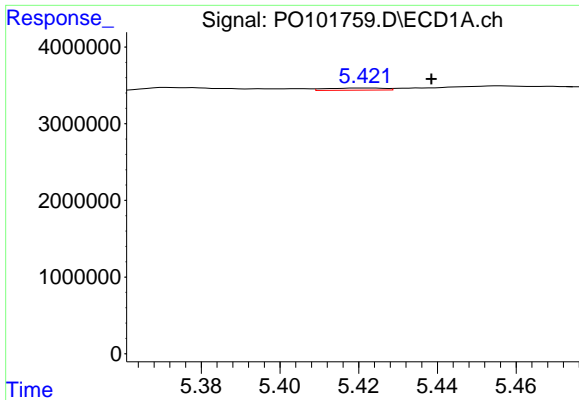
#20 AR-1242-5

R.T.: 6.349 min  
 Delta R.T.: 0.005 min  
 Response: 650604  
 Conc: 11.78 ng/ml



#20 AR-1242-5

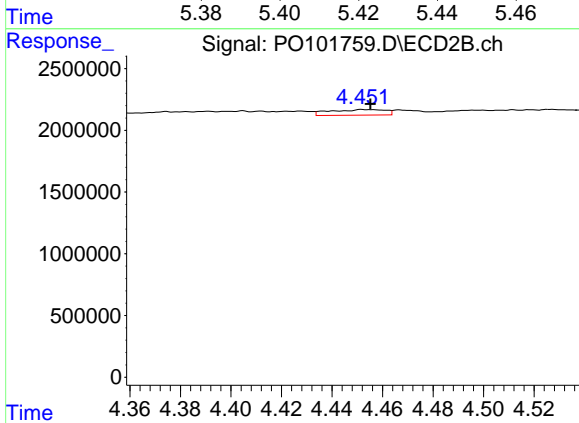
R.T.: 5.229 min  
 Delta R.T.: -0.011 min  
 Response: 737668  
 Conc: 14.91 ng/ml



#21 AR-1248-1

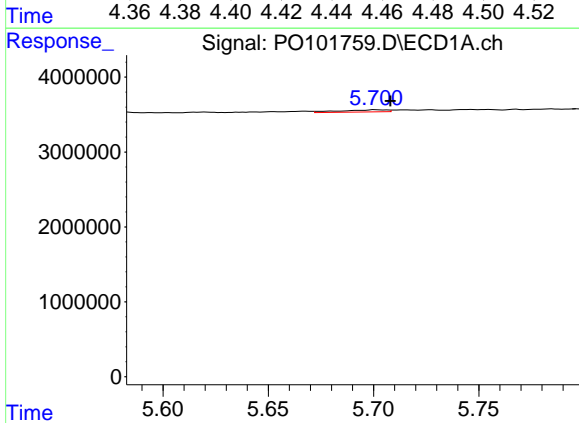
R.T.: 5.422 min  
 Delta R.T.: -0.017 min  
 Response: 296896  
 Conc: 5.40 ng/ml

Instrument :  
 ECD\_O  
 ClientSampleId :  
 TP-2



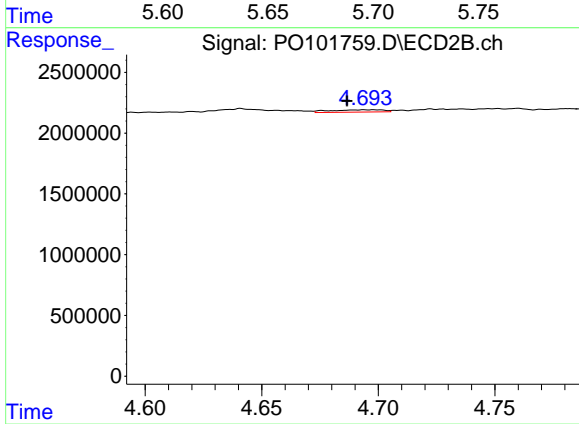
#21 AR-1248-1

R.T.: 4.452 min  
 Delta R.T.: -0.003 min  
 Response: 692002  
 Conc: 16.06 ng/ml



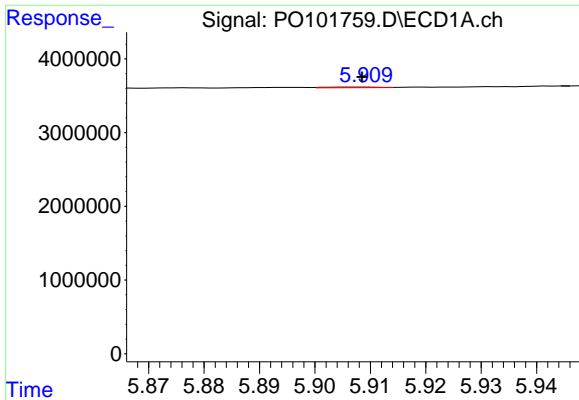
#22 AR-1248-2

R.T.: 5.701 min  
 Delta R.T.: -0.007 min  
 Response: 449316  
 Conc: 4.80 ng/ml



#22 AR-1248-2

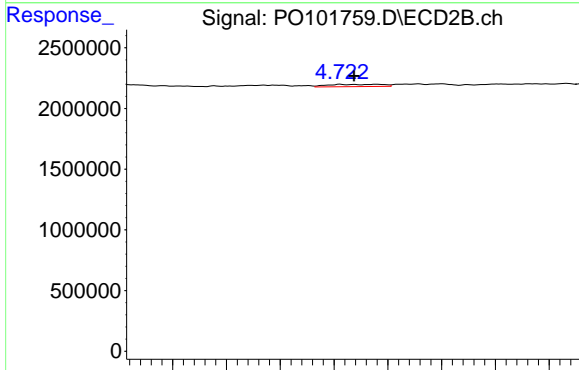
R.T.: 4.698 min  
 Delta R.T.: 0.012 min  
 Response: 307204  
 Conc: 4.64 ng/ml



#23 AR-1248-3

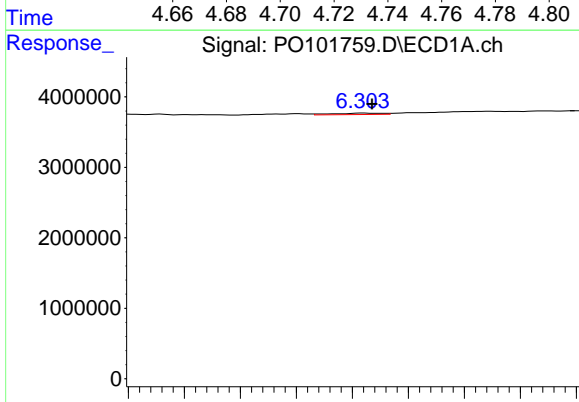
R.T.: 5.909 min  
 Delta R.T.: 0.000 min  
 Response: 52368  
 Conc: 0.54 ng/ml

Instrument :  
 ECD\_O  
 ClientSampleId :  
 TP-2



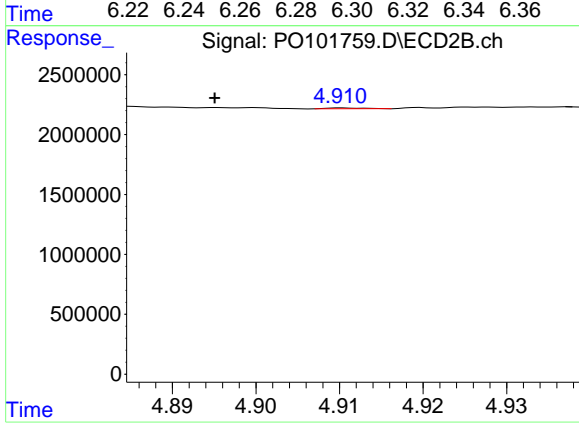
#23 AR-1248-3

R.T.: 4.723 min  
 Delta R.T.: -0.005 min  
 Response: 259917  
 Conc: 3.78 ng/ml



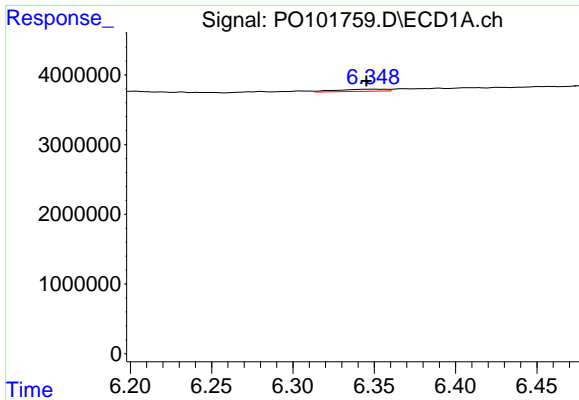
#24 AR-1248-4

R.T.: 6.304 min  
 Delta R.T.: -0.003 min  
 Response: 240379  
 Conc: 2.62 ng/ml



#24 AR-1248-4

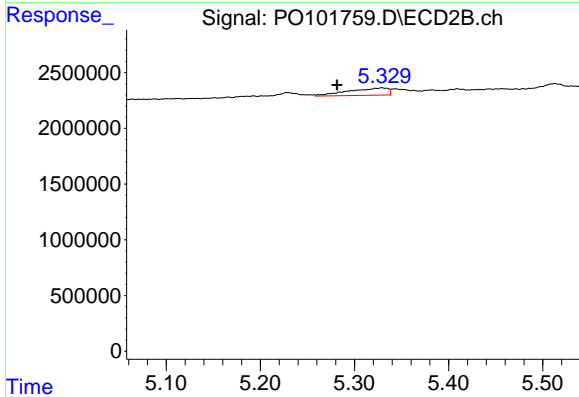
R.T.: 4.911 min  
 Delta R.T.: 0.016 min  
 Response: 23072  
 Conc: 0.29 ng/ml



#25 AR-1248-5

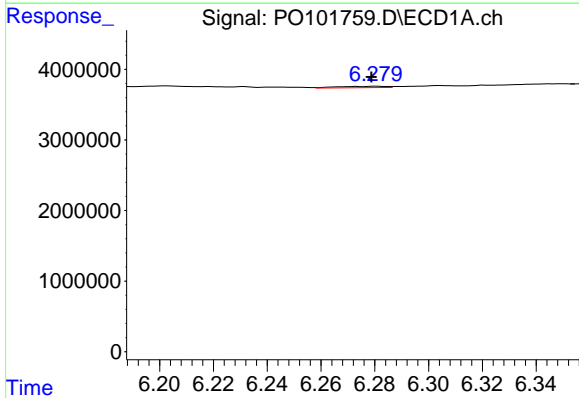
R.T.: 6.349 min  
 Delta R.T.: 0.004 min  
 Response: 650604  
 Conc: 7.24 ng/ml

Instrument :  
 ECD\_O  
 ClientSampleId :  
 TP-2



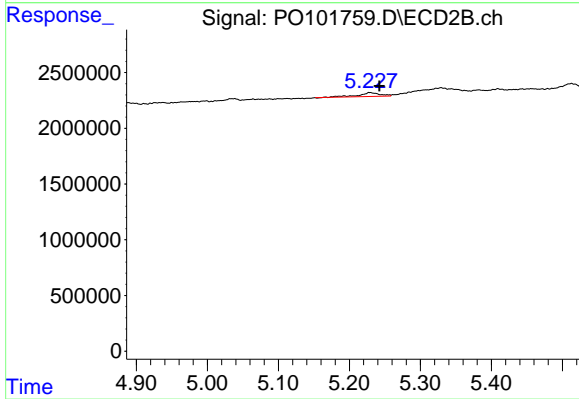
#25 AR-1248-5

R.T.: 5.329 min  
 Delta R.T.: 0.048 min  
 Response: 1909046  
 Conc: 29.24 ng/ml



#26 AR-1254-1

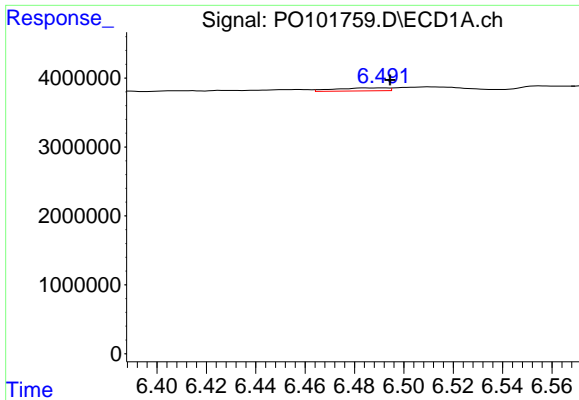
R.T.: 6.281 min  
 Delta R.T.: 0.002 min  
 Response: 254519  
 Conc: 2.29 ng/ml



#26 AR-1254-1

R.T.: 5.229 min  
 Delta R.T.: -0.013 min  
 Response: 737668  
 Conc: 6.35 ng/ml

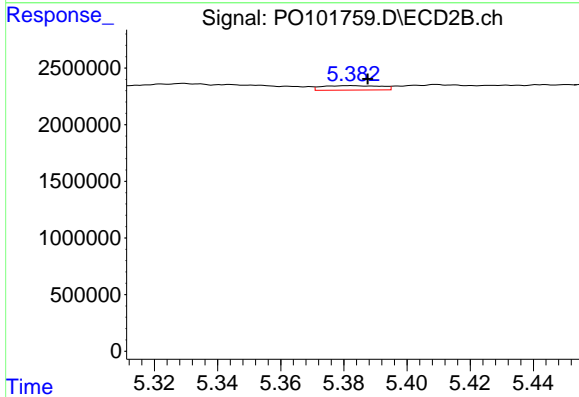




#27 AR-1254-2

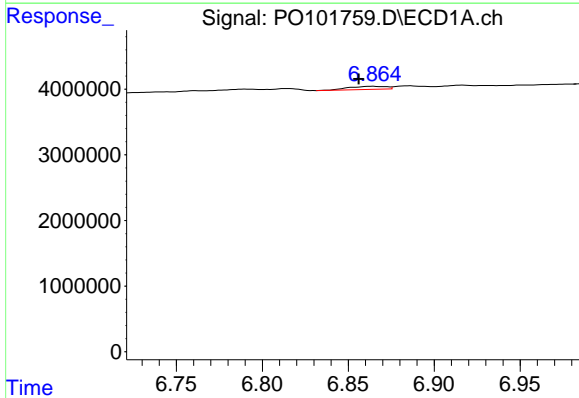
R.T.: 6.491 min  
 Delta R.T.: -0.003 min  
 Response: 640293  
 Conc: 3.90 ng/ml

Instrument :  
 ECD\_O  
 ClientSampleId :  
 TP-2



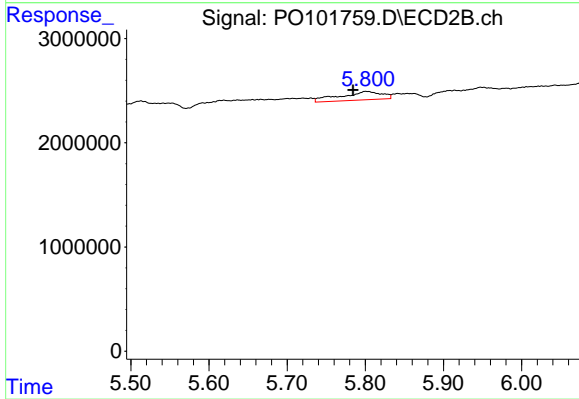
#27 AR-1254-2

R.T.: 5.382 min  
 Delta R.T.: -0.005 min  
 Response: 506160  
 Conc: 4.79 ng/ml



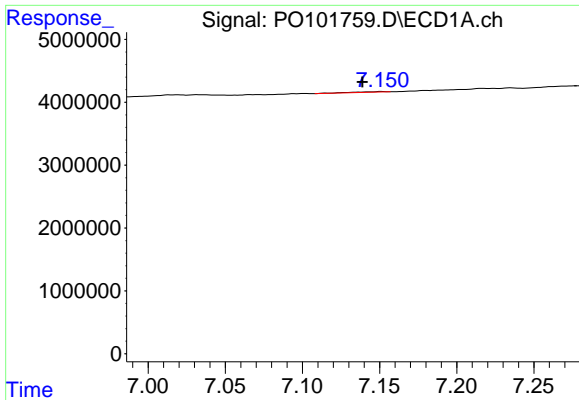
#28 AR-1254-3

R.T.: 6.864 min  
 Delta R.T.: 0.007 min  
 Response: 724931  
 Conc: 4.50 ng/ml



#28 AR-1254-3

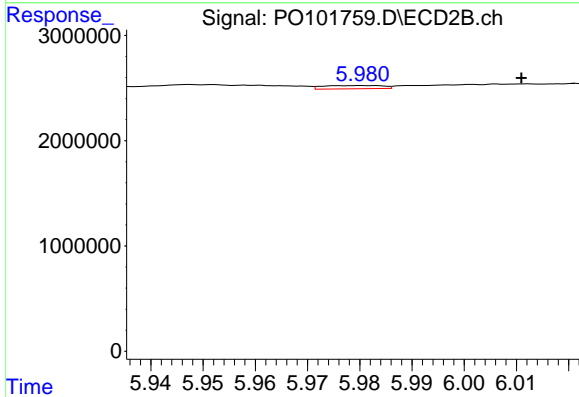
R.T.: 5.800 min  
 Delta R.T.: 0.016 min  
 Response: 3000177  
 Conc: 18.56 ng/ml



#29 AR-1254-4

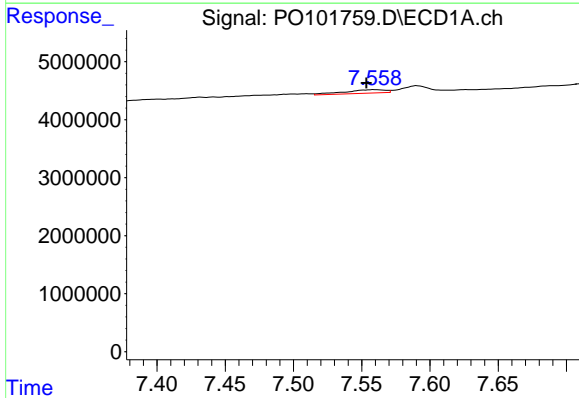
R.T.: 7.151 min  
 Delta R.T.: 0.013 min  
 Response: 140749  
 Conc: 1.42 ng/ml

Instrument :  
 ECD\_O  
 ClientSampleId :  
 TP-2



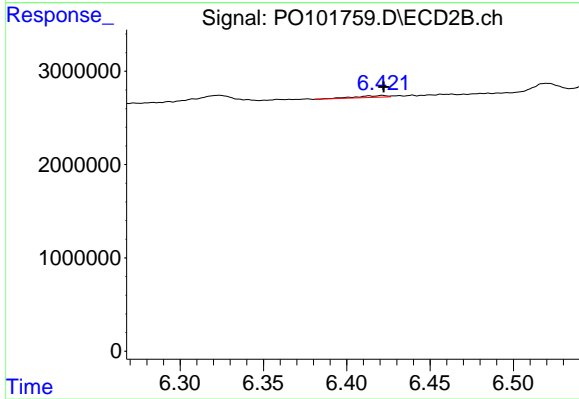
#29 AR-1254-4

R.T.: 5.981 min  
 Delta R.T.: -0.030 min  
 Response: 247034  
 Conc: 2.94 ng/ml



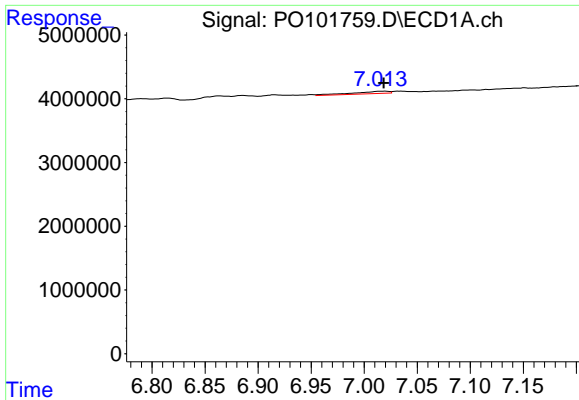
#30 AR-1254-5

R.T.: 7.559 min  
 Delta R.T.: 0.006 min  
 Response: 1276278  
 Conc: 10.66 ng/ml



#30 AR-1254-5

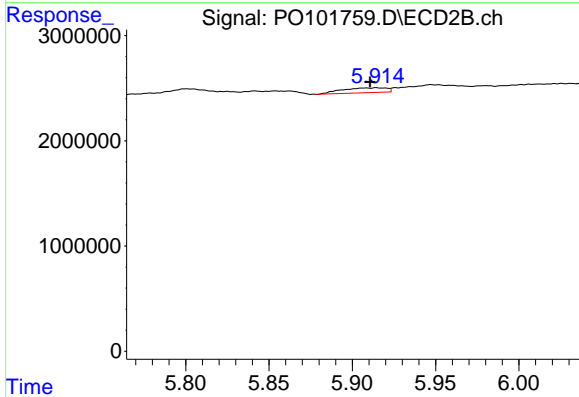
R.T.: 6.421 min  
 Delta R.T.: 0.000 min  
 Response: 244772  
 Conc: 1.83 ng/ml



#31 AR-1260-1

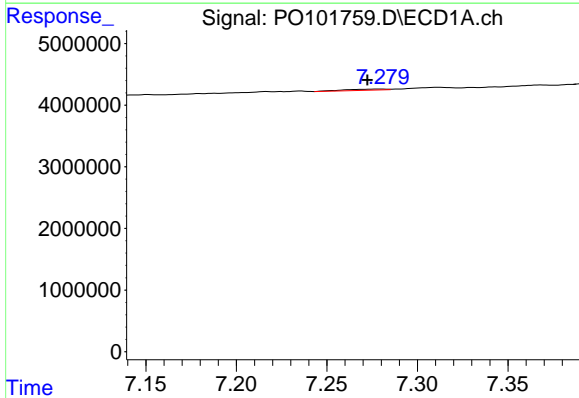
R.T.: 7.020 min  
 Delta R.T.: 0.001 min  
 Response: 903095  
 Conc: 6.88 ng/ml

Instrument :  
 ECD\_O  
 ClientSampleId :  
 TP-2



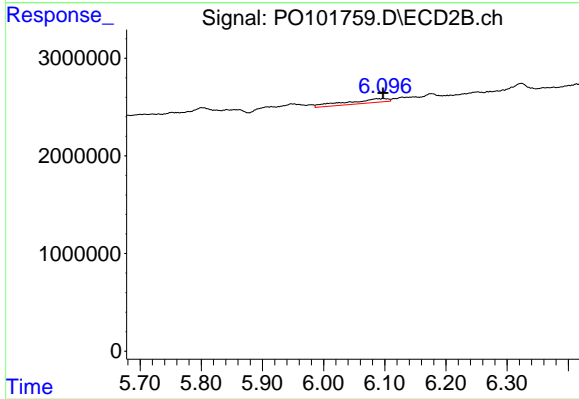
#31 AR-1260-1

R.T.: 5.915 min  
 Delta R.T.: 0.004 min  
 Response: 868805  
 Conc: 7.04 ng/ml



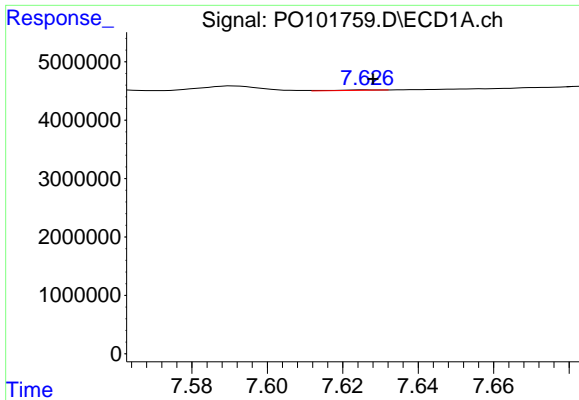
#32 AR-1260-2

R.T.: 7.279 min  
 Delta R.T.: 0.007 min  
 Response: 301097  
 Conc: 2.11 ng/ml



#32 AR-1260-2

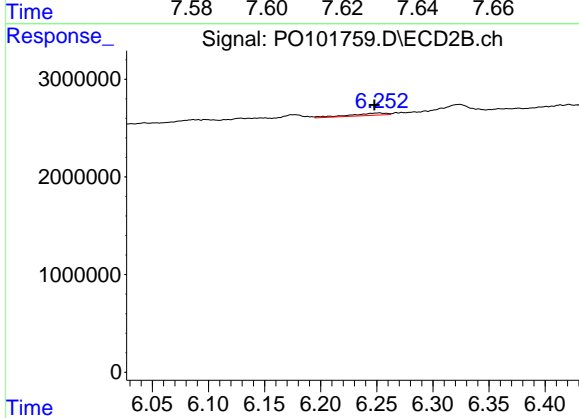
R.T.: 6.087 min  
 Delta R.T.: -0.010 min  
 Response: 1981460  
 Conc: 13.73 ng/ml



#33 AR-1260-3

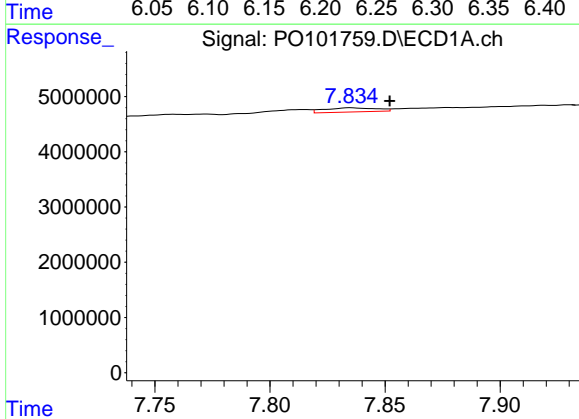
R.T.: 7.627 min  
 Delta R.T.: -0.001 min  
 Response: 52391  
 Conc: 0.50 ng/ml

Instrument :  
 ECD\_O  
 ClientSampleId :  
 TP-2



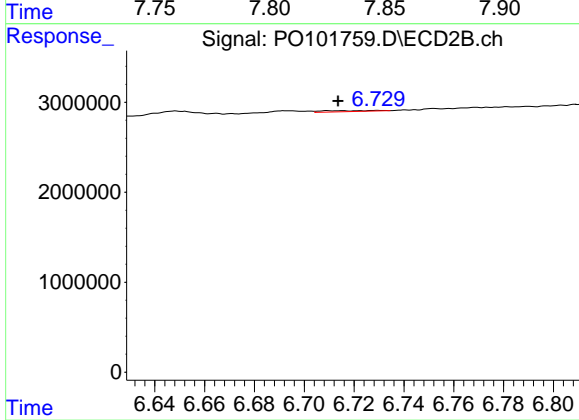
#33 AR-1260-3

R.T.: 6.252 min  
 Delta R.T.: 0.004 min  
 Response: 533207  
 Conc: 4.08 ng/ml



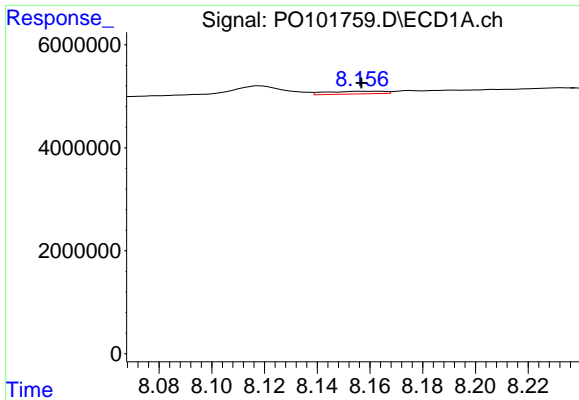
#34 AR-1260-4

R.T.: 7.835 min  
 Delta R.T.: -0.017 min  
 Response: 1171991  
 Conc: 10.49 ng/ml



#34 AR-1260-4

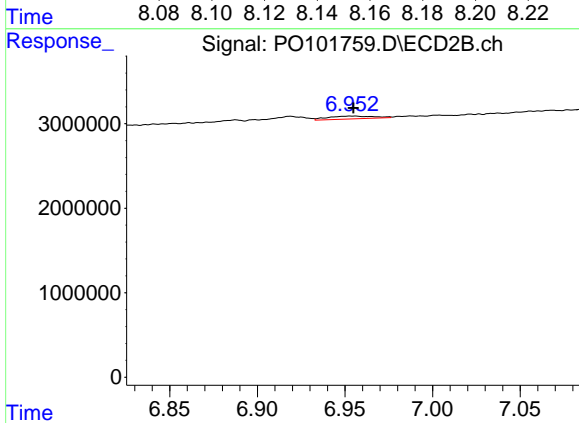
R.T.: 6.730 min  
 Delta R.T.: 0.017 min  
 Response: 162503  
 Conc: 1.47 ng/ml



#35 AR-1260-5

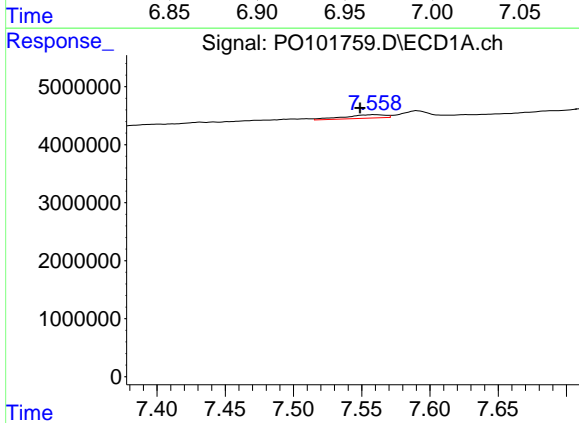
R.T.: 8.163 min  
 Delta R.T.: 0.006 min  
 Response: 793996  
 Conc: 3.62 ng/ml

Instrument :  
 ECD\_O  
 ClientSampleId :  
 TP-2



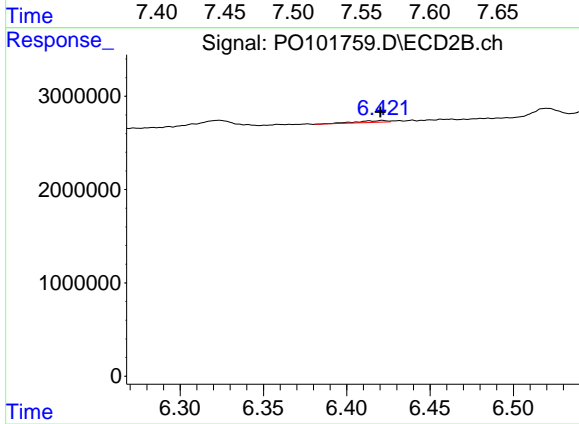
#35 AR-1260-5

R.T.: 6.954 min  
 Delta R.T.: 0.000 min  
 Response: 600955  
 Conc: 2.54 ng/ml



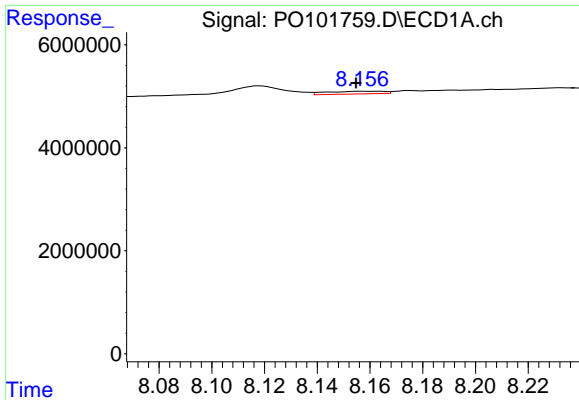
#36 AR-1262-1

R.T.: 7.559 min  
 Delta R.T.: 0.011 min  
 Response: 1276278  
 Conc: 10.57 ng/ml



#36 AR-1262-1

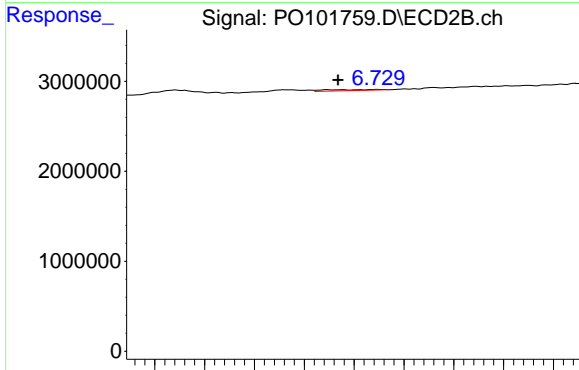
R.T.: 6.421 min  
 Delta R.T.: 0.001 min  
 Response: 244772  
 Conc: 2.92 ng/ml



#37 AR-1262-2

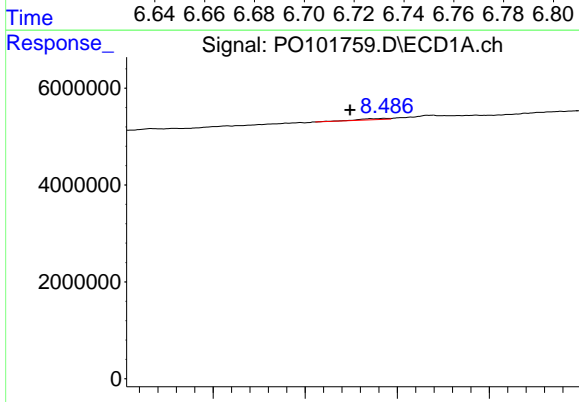
R.T.: 8.163 min  
 Delta R.T.: 0.008 min  
 Response: 793996  
 Conc: 2.58 ng/ml

Instrument :  
 ECD\_O  
 ClientSampleId :  
 TP-2



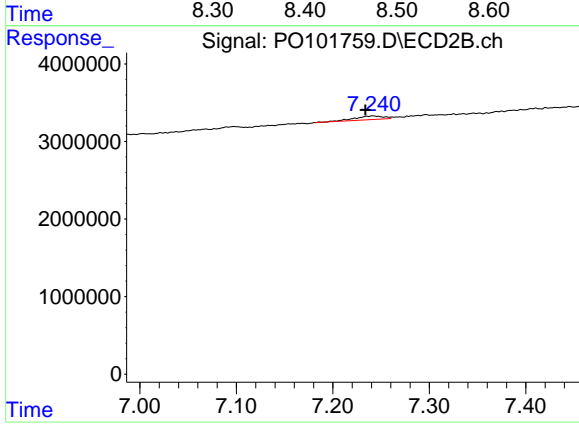
#37 AR-1262-2

R.T.: 6.730 min  
 Delta R.T.: 0.017 min  
 Response: 162503  
 Conc: 1.07 ng/ml



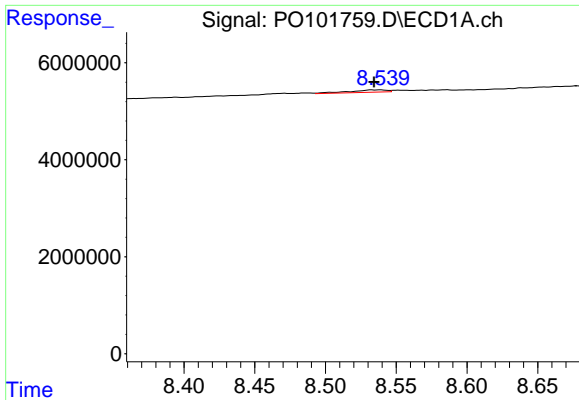
#38 AR-1262-3

R.T.: 8.486 min  
 Delta R.T.: 0.038 min  
 Response: 503013  
 Conc: 2.38 ng/ml



#38 AR-1262-3

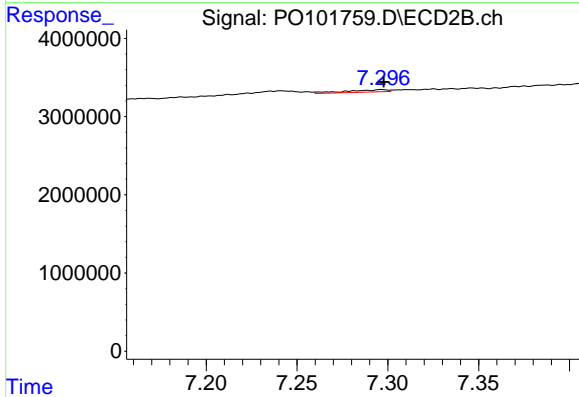
R.T.: 7.241 min  
 Delta R.T.: 0.008 min  
 Response: 999858  
 Conc: 8.45 ng/ml



#39 AR-1262-4

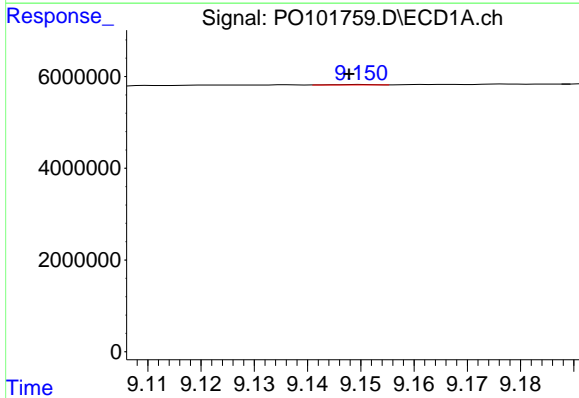
R.T.: 8.539 min  
 Delta R.T.: 0.005 min  
 Response: 937136  
 Conc: 5.45 ng/ml

Instrument :  
 ECD\_O  
 ClientSampleId :  
 TP-2



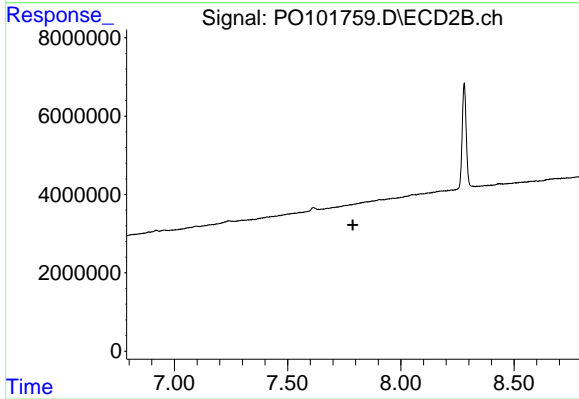
#39 AR-1262-4

R.T.: 7.297 min  
 Delta R.T.: -0.001 min  
 Response: 458829  
 Conc: 2.13 ng/ml



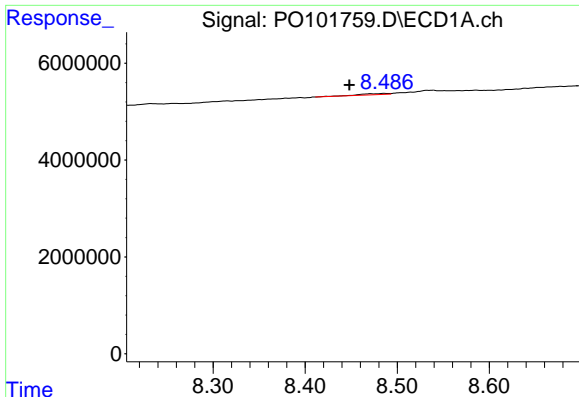
#40 AR-1262-5

R.T.: 9.150 min  
 Delta R.T.: 0.002 min  
 Response: 51861  
 Conc: 0.50 ng/ml



#40 AR-1262-5

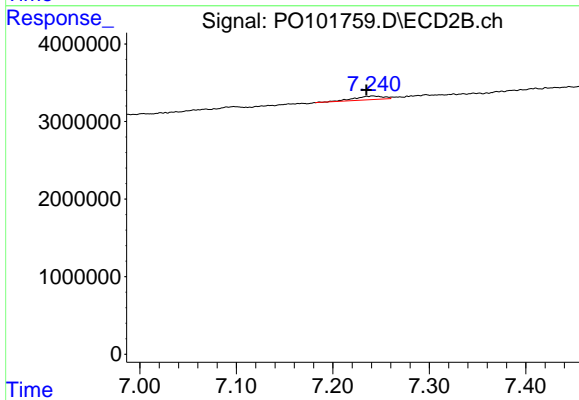
R.T.: 0.000 min  
 Exp R.T. : 7.788 min  
 Response: 0  
 Conc: N.D.



#41 AR-1268-1

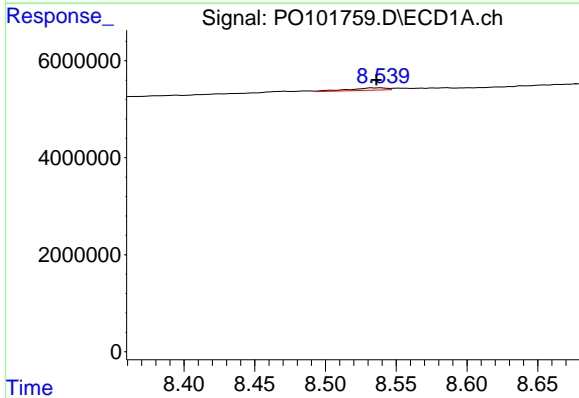
R.T.: 8.486 min  
 Delta R.T.: 0.038 min  
 Response: 503013  
 Conc: 1.46 ng/ml

Instrument :  
 ECD\_O  
 ClientSampleId :  
 TP-2



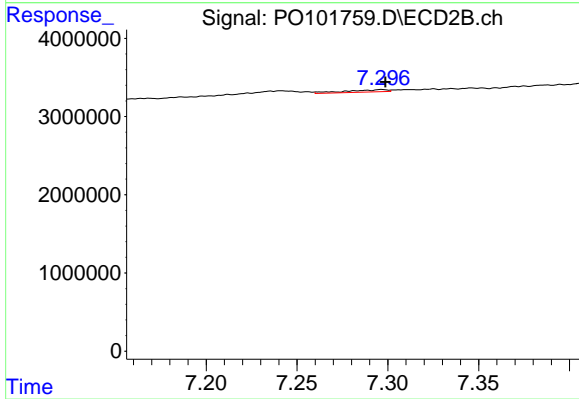
#41 AR-1268-1

R.T.: 7.241 min  
 Delta R.T.: 0.007 min  
 Response: 999858  
 Conc: 3.22 ng/ml



#42 AR-1268-2

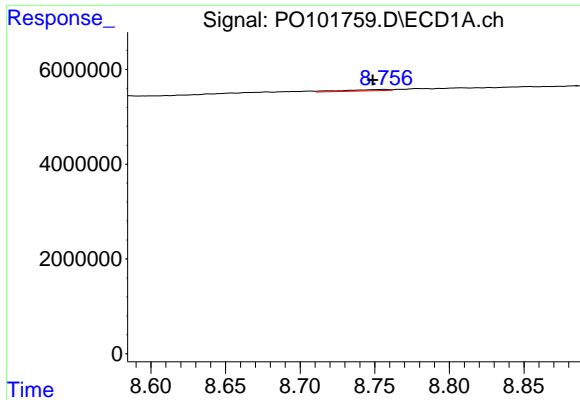
R.T.: 8.539 min  
 Delta R.T.: 0.003 min  
 Response: 937136  
 Conc: 2.82 ng/ml



#42 AR-1268-2

R.T.: 7.297 min  
 Delta R.T.: -0.002 min  
 Response: 458829  
 Conc: 1.62 ng/ml

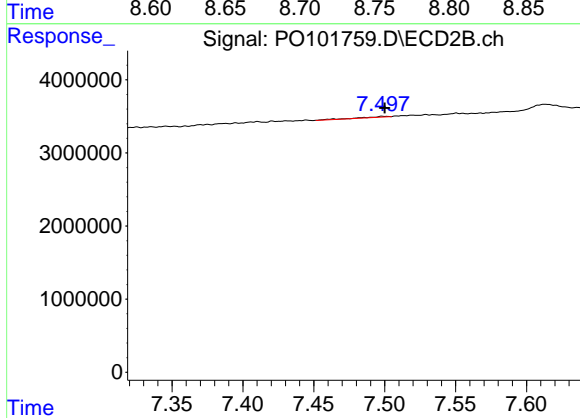




#43 AR-1268-3

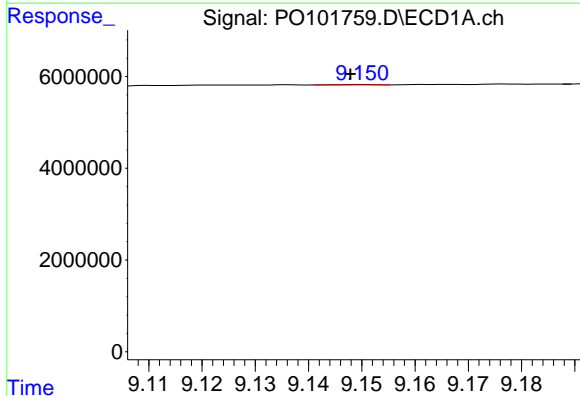
R.T.: 8.756 min  
 Delta R.T.: 0.008 min  
 Response: 533805  
 Conc: 1.95 ng/ml

Instrument :  
 ECD\_O  
 ClientSampleId :  
 TP-2



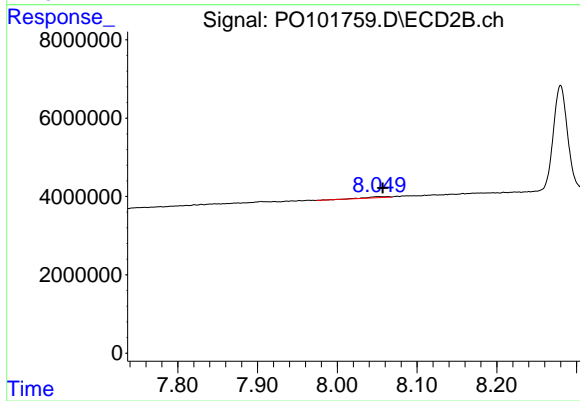
#43 AR-1268-3

R.T.: 7.499 min  
 Delta R.T.: -0.001 min  
 Response: 151008  
 Conc: 0.64 ng/ml



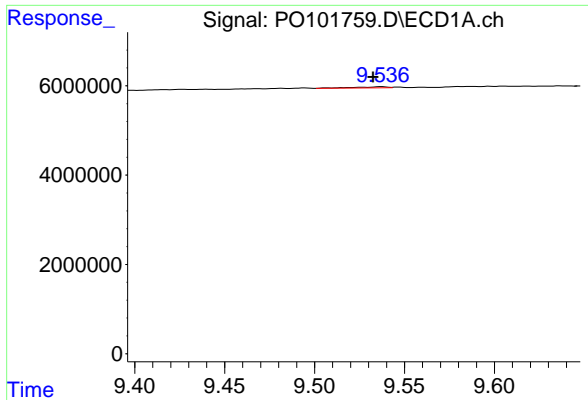
#44 AR-1268-4

R.T.: 9.150 min  
 Delta R.T.: 0.002 min  
 Response: 51861  
 Conc: 0.52 ng/ml



#44 AR-1268-4

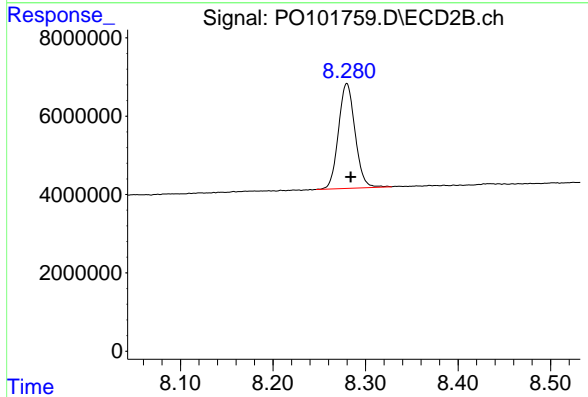
R.T.: 8.052 min  
 Delta R.T.: -0.005 min  
 Response: 494218  
 Conc: 0.69 ng/ml



#45 AR-1268-5

R.T.: 9.537 min  
 Delta R.T.: 0.005 min  
 Response: 322978  
 Conc: 0.37 ng/ml

Instrument :  
 ECD\_O  
 ClientSampleId :  
 TP-2



#45 AR-1268-5

R.T.: 8.280 min  
 Delta R.T.: -0.004 min  
 Response: 33410618  
 Conc: 97.68 ng/ml