

Data Path : Z:\pestpcbsrv\HPCHEM1\ECD_0\Data\P0021723\
 Data File : P0092560.D
 Signal(s) : Signal #1: ECD1A.ch Signal #2: ECD2B.ch
 Acq On : 17 Feb 2023 16:13
 Operator : YP/AJ
 Sample : AR1254CCC500
 Misc :
 ALS Vial : 6 Sample Multiplier: 1

Instrument :
 ECD_0
 ClientSampleId :
 AR1254CCC500

Integration File signal 1: autoint1.e
 Integration File signal 2: autoint2.e
 Quant Time: Feb 17 16:56:34 2023
 Quant Method : Z:\pestpcbsrv\HPCHEM1\ECD_0\methods\P0012323.M
 Quant Title : GC EXTRACTABLES
 QLast Update : Tue Jan 24 04:40:59 2023
 Response via : Initial Calibration
 Integrator: ChemStation

Volume Inj. : 2 µl
 Signal #1 Phase : ZB-MR1 Signal #2 Phase: ZB-MR2
 Signal #1 Info : 30Mx0.32mmx 0.50µ Signal #2 Info : 30M x 0.32mm x 0.25µm

Compound	RT#1	RT#2	Resp#1	Resp#2	ng/ml	ng/ml
System Monitoring Compounds						
1) SA Tetrachlo...	4.454	3.644	127.7E6	63999904	44.120	45.579
2) SA Decachlor...	10.394	8.688	103.7E6	53502364	50.262	47.393
Target Compounds						
3) L1 AR-1016-1	5.642	4.733	2302357	564779	25.174	12.288 #
4) L1 AR-1016-2	5.669	4.751	2535784	395375	18.937	6.029 #
5) L1 AR-1016-3	5.727	4.929	1304123	324056	15.155	9.166 #
6) L1 AR-1016-4	5.827	4.971	772874	15501236	11.593	498.320 #
7) L1 AR-1016-5	6.130	5.184	18890428	9237227	262.914	232.289
8) L2 AR-1221-1	0.000	3.944f	0	875564	N.D.	46.251 #
9) L2 AR-1221-2	4.764	3.944	1793667	875564	64.813	62.300
10) L2 AR-1221-3	4.764f	0.000	1793667	0	21.256	N.D. #
11) L3 AR-1232-1	4.764f	0.000	1793667	0	25.922	N.D. #
12) L3 AR-1232-2	5.369	4.751	5416218	395375	155.020	12.898 #
13) L3 AR-1232-3	5.669	4.929	2535784	324056	41.419	20.128 #
14) L3 AR-1232-4	5.827	5.011	772874	4800263	25.788	293.892 #
15) L3 AR-1232-5	5.923	5.184	32735145	9237227	1324.531	516.428 #
16) L4 AR-1242-1	5.642	4.733	2302357	564779	29.522	14.480 #
17) L4 AR-1242-2	5.669	4.751	2535784	395375	22.527	7.280 #
18) L4 AR-1242-3	5.727	4.929	1304123	324056	17.965	11.127 #
19) L4 AR-1242-4	5.827	5.011	772874	4800263	13.957	149.234 #
20) L4 AR-1242-5	6.586	5.539	16127717	33891703	288.913	936.189 #
21) L5 AR-1248-1	5.642	4.733	2302357	564779	39.665	19.387 #
22) L5 AR-1248-2	5.923	4.971	32735145	15501236	358.217	343.577
23) L5 AR-1248-3	6.130	5.011	18890428	4800263	192.615	102.922 #
24) L5 AR-1248-4	6.542	5.184	23229809	9237227	237.259	171.919 #
25) L5 AR-1248-5	6.586	5.579	16127717	4052745	171.062	85.606 #
26) L6 AR-1254-1	6.516	5.539	54299861	33891703	490.445	432.349
27) L6 AR-1254-2	6.741	5.687	80176155	30019741	493.226	433.869
28) L6 AR-1254-3	7.115	6.093	81798477	46037803	495.961	431.328
29) L6 AR-1254-4	7.408	6.323	53905227	25644025	492.801	435.424
30) L6 AR-1254-5	7.838	6.744	71590210	39947143	508.818	438.905
31) L7 AR-1260-1	7.284	6.224	36052287	23924994	273.630	316.721
32) L7 AR-1260-2	7.549	6.413	37059646	19316518	249.919	220.473
33) L7 AR-1260-3	7.897	6.566	8437402	19136029	74.494	220.743 #
34) L7 AR-1260-4	8.132	7.042	23936283	2064224	193.089	30.824 #
35) L7 AR-1260-5	8.484	7.285	7807401	4922864	35.159	34.595
36) L8 AR-1262-1	7.838	6.744	71590210	39947143	662.565	860.748 #
37) L8 AR-1262-2	8.484	7.285	7807401	4922864	32.706	33.367
38) L8 AR-1262-3	8.823	7.633f	6687175	4593590	39.558	73.501 #
39) L8 AR-1262-4	8.875	7.633	1945067	4593590	19.119	41.927 #
41) L9 AR-1268-1	8.823	7.633f	6687175	4593590	21.139	25.245
42) L9 AR-1268-2	8.875	7.633	1945067	4593590	6.444	27.758 #

Data Path : Z:\pestpcbsrv\HPCHEM1\ECD_0\Data\P0021723\
 Data File : P0092560.D
 Signal(s) : Signal #1: ECD1A.ch Signal #2: ECD2B.ch
 Acq On : 17 Feb 2023 16:13
 Operator : YP/AJ
 Sample : AR1254CCC500
 Misc :
 ALS Vial : 6 Sample Multiplier: 1

Instrument :
 ECD_0
ClientSampleId :
 AR1254CCC500

Integration File signal 1: autoint1.e
 Integration File signal 2: autoint2.e
 Quant Time: Feb 17 16:56:34 2023
 Quant Method : Z:\pestpcbsrv\HPCHEM1\ECD_0\methods\P0012323.M
 Quant Title : GC EXTRACTABLES
 QLast Update : Tue Jan 24 04:40:59 2023
 Response via : Initial Calibration
 Integrator: ChemStation

Volume Inj. : 2 µl
 Signal #1 Phase : ZB-MR1 Signal #2 Phase: ZB-MR2
 Signal #1 Info : 30Mx0.32mmx 0.50µ Signal #2 Info : 30M x 0.32mm x 0.25µm

Compound	RT#1	RT#2	Resp#1	Resp#2	ng/ml	ng/ml

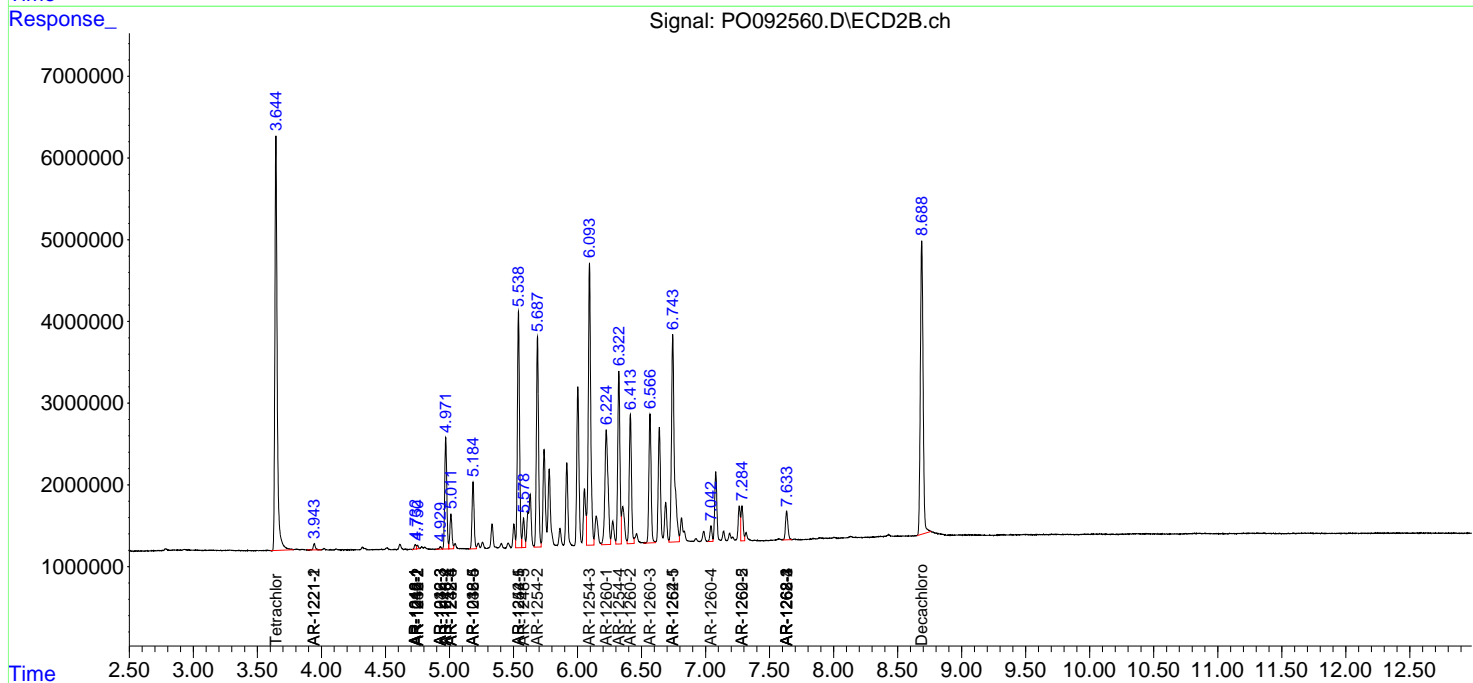
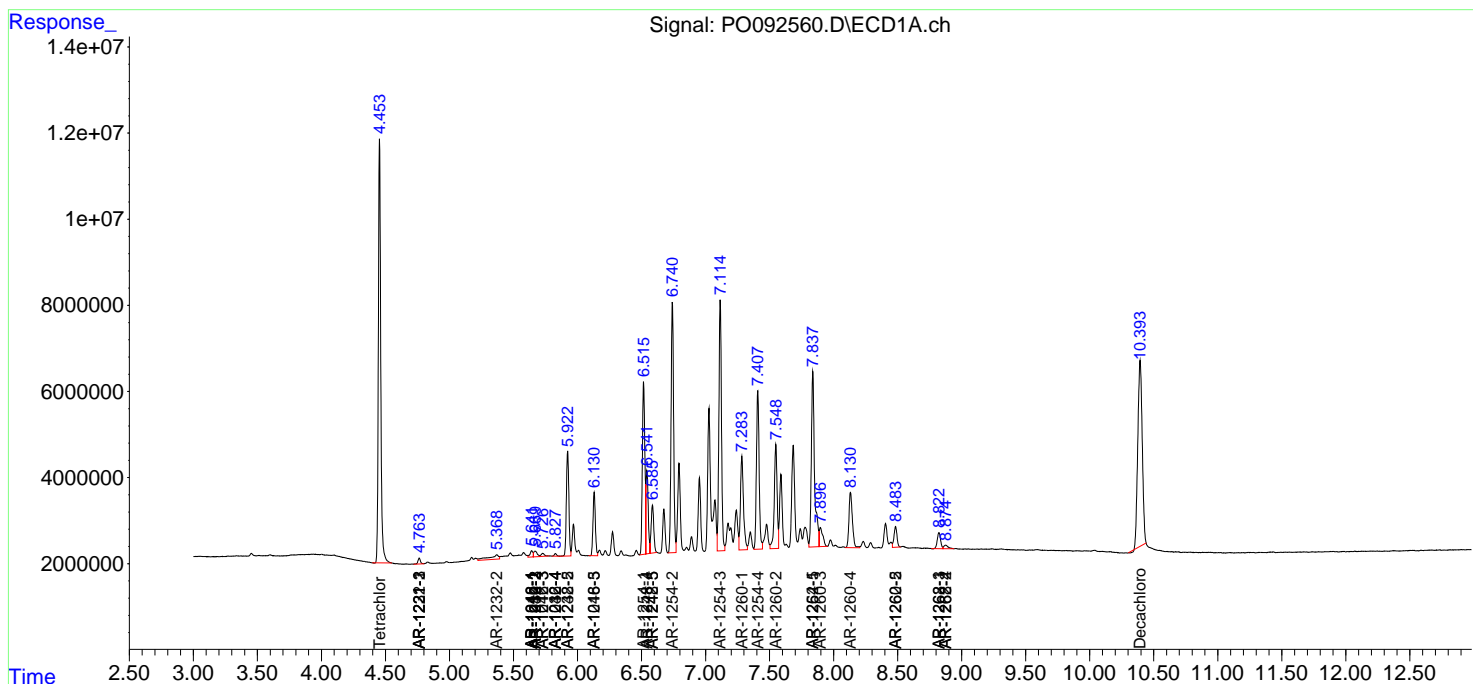
(f)=RT Delta > 1/2 Window (#)=Amounts differ by > 25% (m)=manual int.

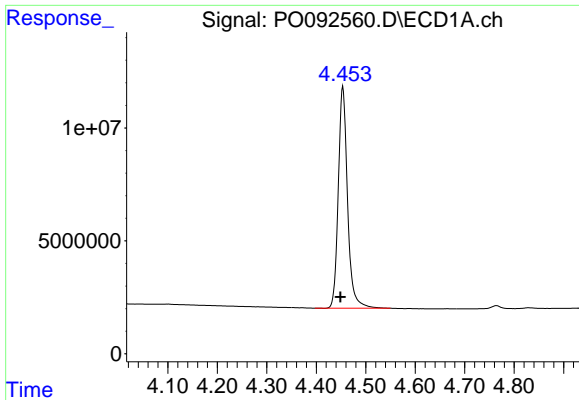
Data Path : Z:\pestpcbsrv\HPCHEM1\ECD_O\Data\P0021723\
 Data File : P0092560.D
 Signal(s) : Signal #1: ECD1A.ch Signal #2: ECD2B.ch
 Acq On : 17 Feb 2023 16:13
 Operator : YP/AJ
 Sample : AR1254CCC500
 Misc :
 ALS Vial : 6 Sample Multiplier: 1

Instrument :
 ECD_O
 ClientSampleId :
 AR1254CCC500

Integration File signal 1: autoint1.e
 Integration File signal 2: autoint2.e
 Quant Time: Feb 17 16:56:34 2023
 Quant Method : Z:\pestpcbsrv\HPCHEM1\ECD_O\methods\P0012323.M
 Quant Title : GC EXTRACTABLES
 QLast Update : Tue Jan 24 04:40:59 2023
 Response via : Initial Calibration
 Integrator: ChemStation

Volume Inj. : 2 µl
 Signal #1 Phase : ZB-MR1 Signal #2 Phase: ZB-MR2
 Signal #1 Info : 30Mx0.32mmx 0.50µ Signal #2 Info : 30M x 0.32mm x 0.25µm

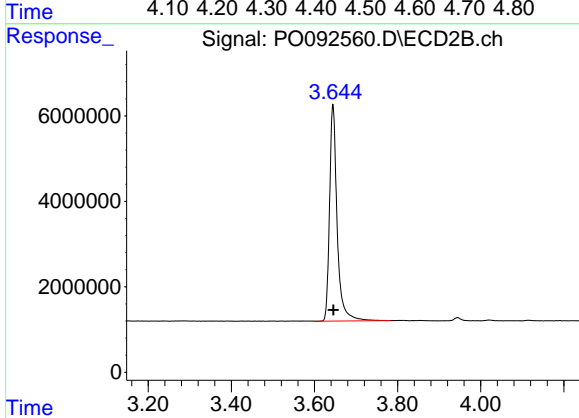




#1 Tetrachloro-m-xylene

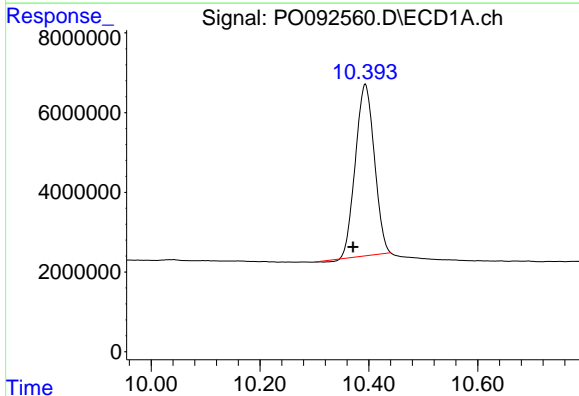
R.T.: 4.454 min
 Delta R.T.: 0.005 min
 Response: 127723622
 Conc: 44.12 ng/ml

Instrument :
 ECD_O
 ClientSampleId :
 AR1254CCC500



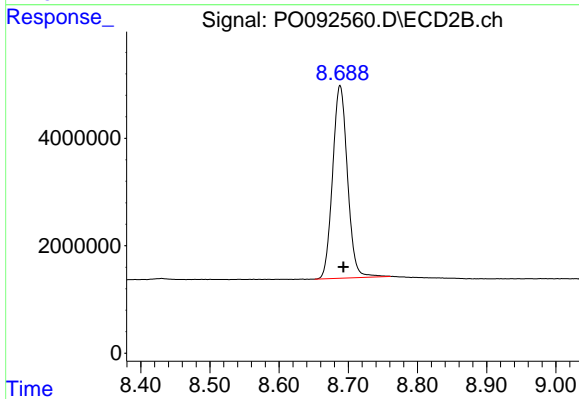
#1 Tetrachloro-m-xylene

R.T.: 3.644 min
 Delta R.T.: -0.001 min
 Response: 63999904
 Conc: 45.58 ng/ml



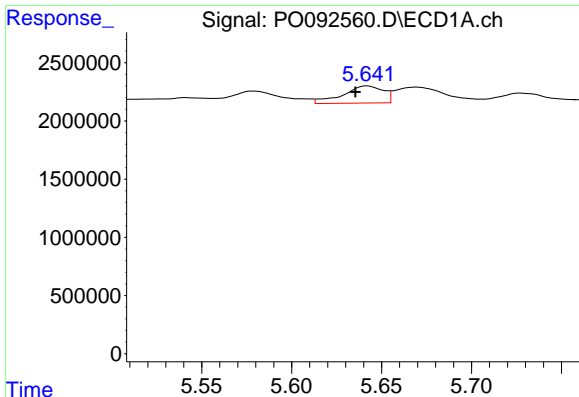
#2 Decachlorobiphenyl

R.T.: 10.394 min
 Delta R.T.: 0.022 min
 Response: 103737292
 Conc: 50.26 ng/ml



#2 Decachlorobiphenyl

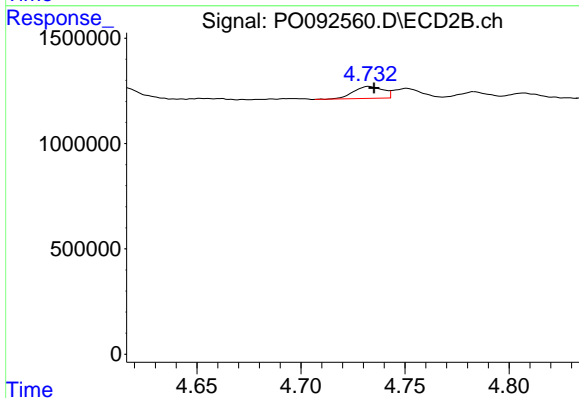
R.T.: 8.688 min
 Delta R.T.: -0.005 min
 Response: 53502364
 Conc: 47.39 ng/ml



#3 AR-1016-1

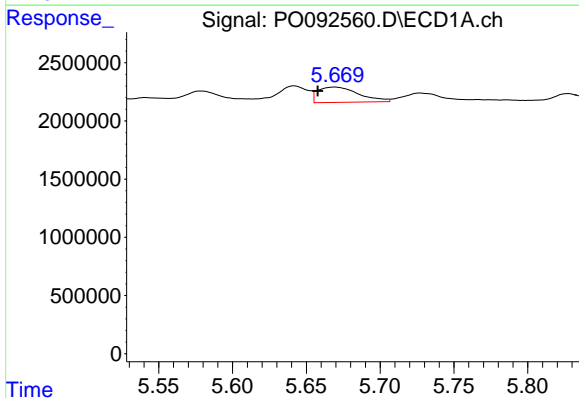
R.T.: 5.642 min
 Delta R.T.: 0.006 min
 Response: 2302357
 Conc: 25.17 ng/ml

Instrument :
 ECD_O
 ClientSampleId :
 AR1254CCC500



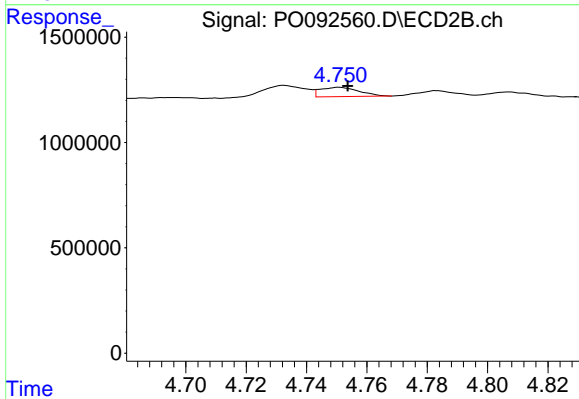
#3 AR-1016-1

R.T.: 4.733 min
 Delta R.T.: -0.002 min
 Response: 564779
 Conc: 12.29 ng/ml



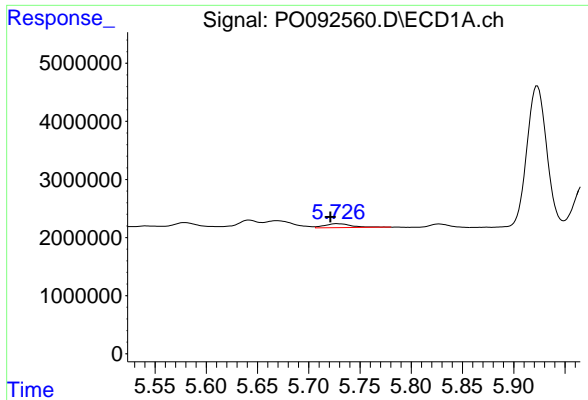
#4 AR-1016-2

R.T.: 5.669 min
 Delta R.T.: 0.012 min
 Response: 2535784
 Conc: 18.94 ng/ml



#4 AR-1016-2

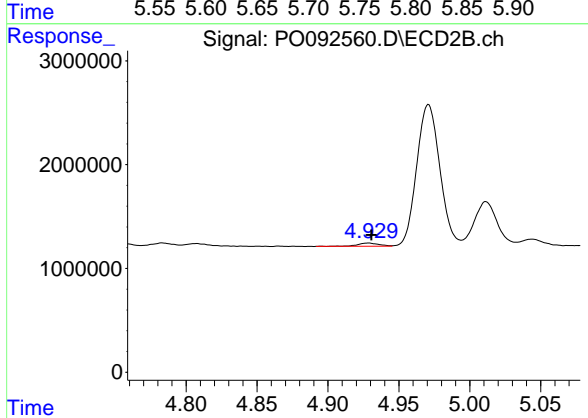
R.T.: 4.751 min
 Delta R.T.: -0.003 min
 Response: 395375
 Conc: 6.03 ng/ml



#5 AR-1016-3

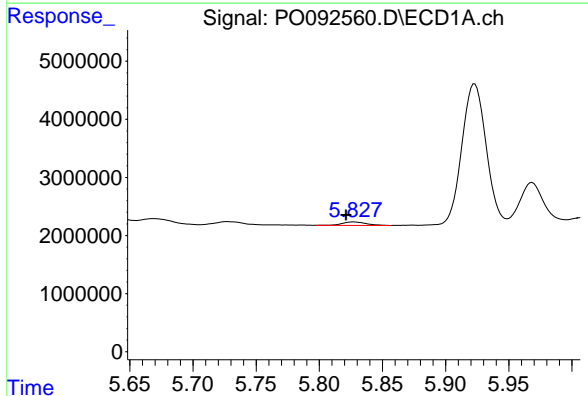
R.T.: 5.727 min
 Delta R.T.: 0.006 min
 Response: 1304123
 Conc: 15.15 ng/ml

Instrument :
 ECD_O
 ClientSampleId :
 AR1254CCC500



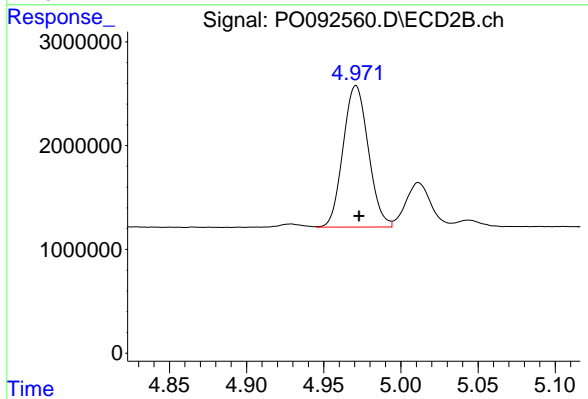
#5 AR-1016-3

R.T.: 4.929 min
 Delta R.T.: -0.002 min
 Response: 324056
 Conc: 9.17 ng/ml



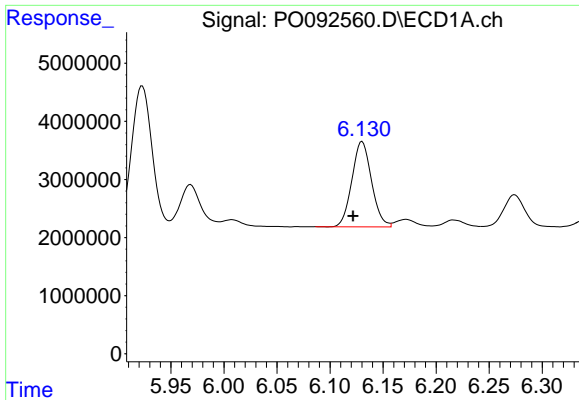
#6 AR-1016-4

R.T.: 5.827 min
 Delta R.T.: 0.006 min
 Response: 772874
 Conc: 11.59 ng/ml



#6 AR-1016-4

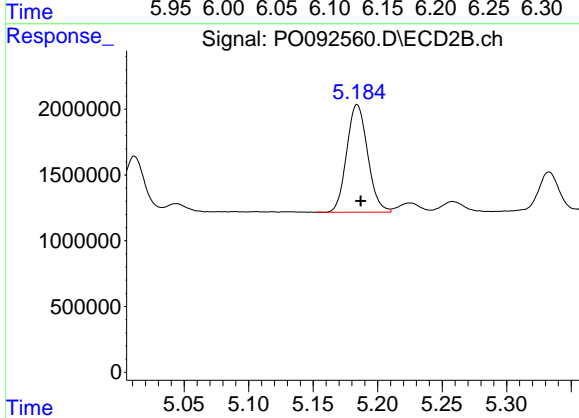
R.T.: 4.971 min
 Delta R.T.: -0.002 min
 Response: 15501236
 Conc: 498.32 ng/ml



#7 AR-1016-5

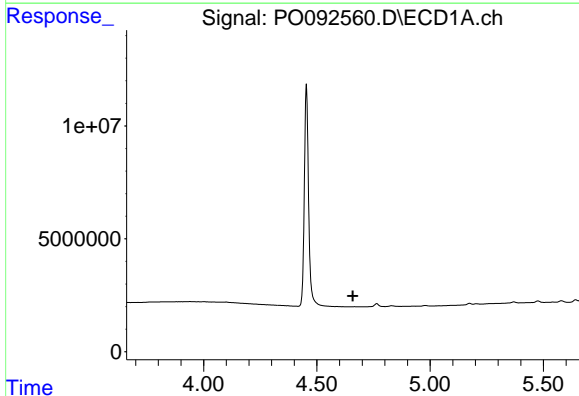
R.T.: 6.130 min
 Delta R.T.: 0.008 min
 Response: 18890428
 Conc: 262.91 ng/ml

Instrument :
 ECD_O
 ClientSampleId :
 AR1254CCC500



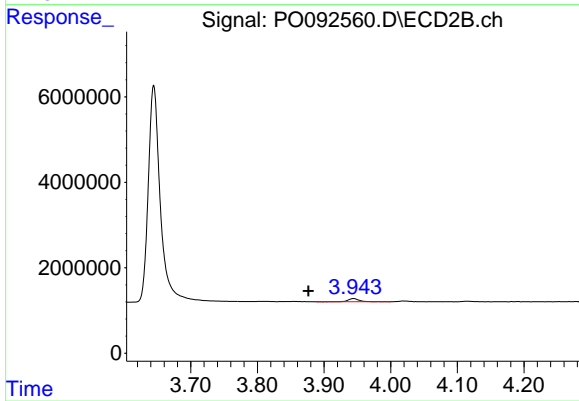
#7 AR-1016-5

R.T.: 5.184 min
 Delta R.T.: -0.003 min
 Response: 9237227
 Conc: 232.29 ng/ml



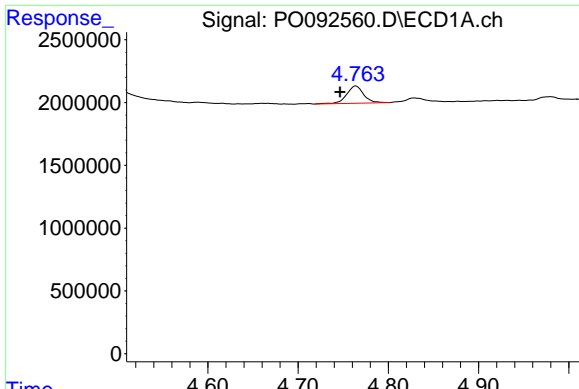
#8 AR-1221-1

R.T.: 0.000 min
 Exp R.T. : 4.659 min
 Response: 0
 Conc: N.D.



#8 AR-1221-1

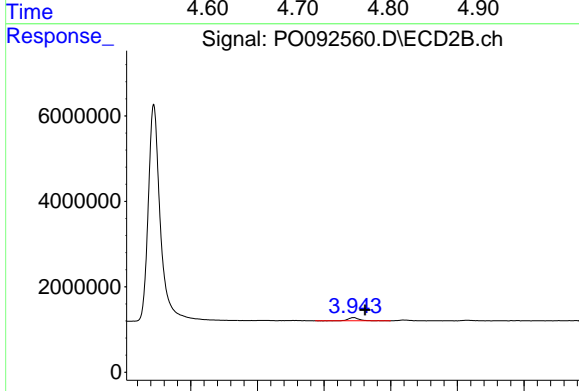
R.T.: 3.944 min
 Delta R.T.: 0.068 min
 Response: 875564
 Conc: 46.25 ng/ml



#9 AR-1221-2

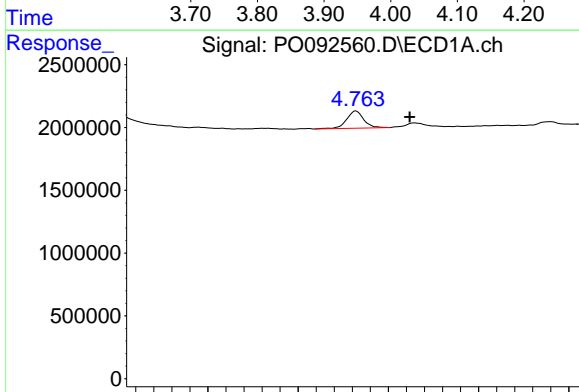
R.T.: 4.764 min
 Delta R.T.: 0.018 min
 Response: 1793667
 Conc: 64.81 ng/ml

Instrument :
 ECD_O
 ClientSampleId :
 AR1254CCC500



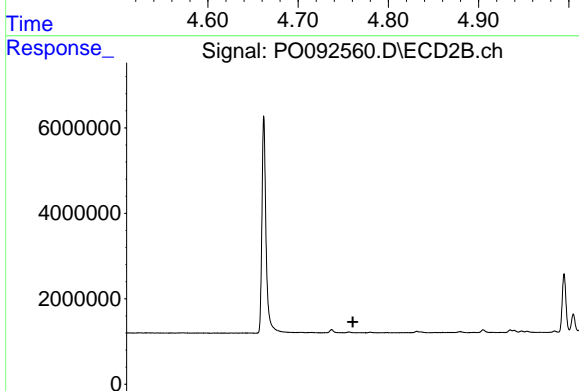
#9 AR-1221-2

R.T.: 3.944 min
 Delta R.T.: -0.017 min
 Response: 875564
 Conc: 62.30 ng/ml



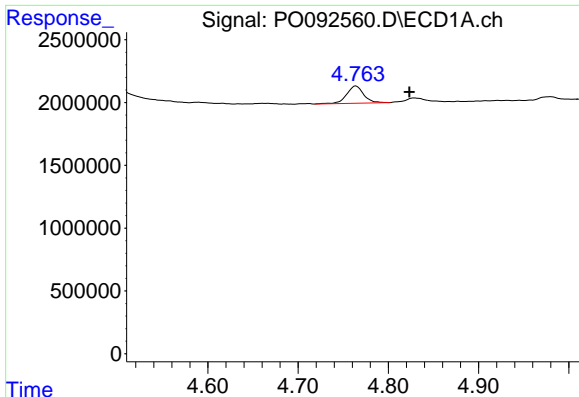
#10 AR-1221-3

R.T.: 4.764 min
 Delta R.T.: -0.060 min
 Response: 1793667
 Conc: 21.26 ng/ml



#10 AR-1221-3

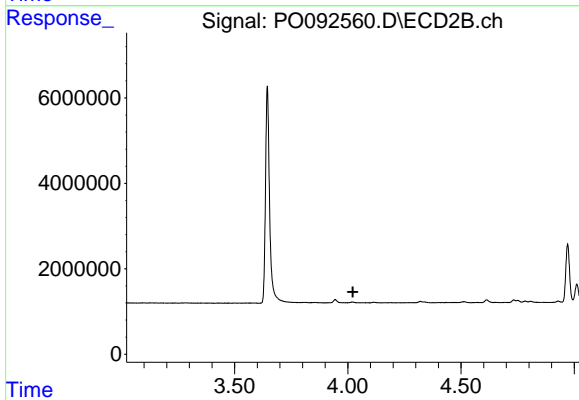
R.T.: 0.000 min
 Exp R.T. : 4.038 min
 Response: 0
 Conc: N.D.



#11 AR-1232-1

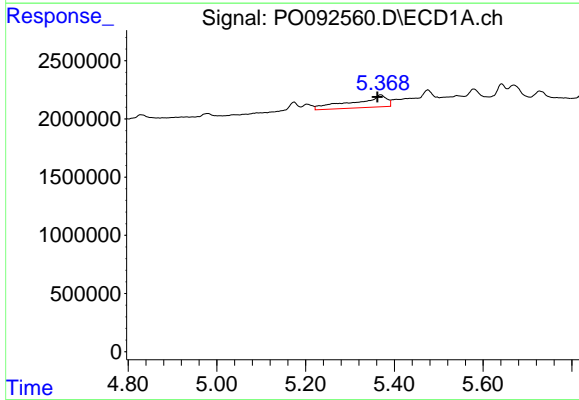
R.T.: 4.764 min
 Delta R.T.: -0.060 min
 Response: 1793667
 Conc: 25.92 ng/ml

Instrument :
 ECD_O
 ClientSampleId :
 AR1254CCC500



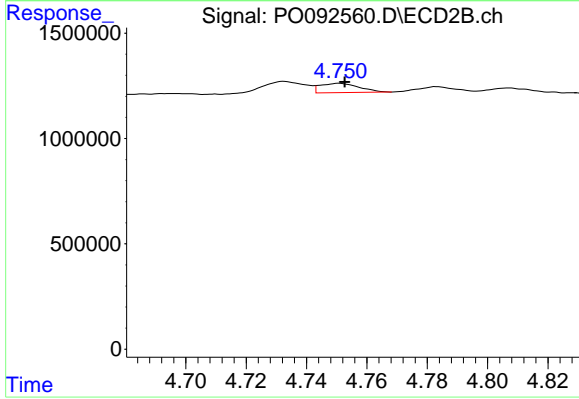
#11 AR-1232-1

R.T.: 0.000 min
 Exp R.T. : 4.022 min
 Response: 0
 Conc: N.D.



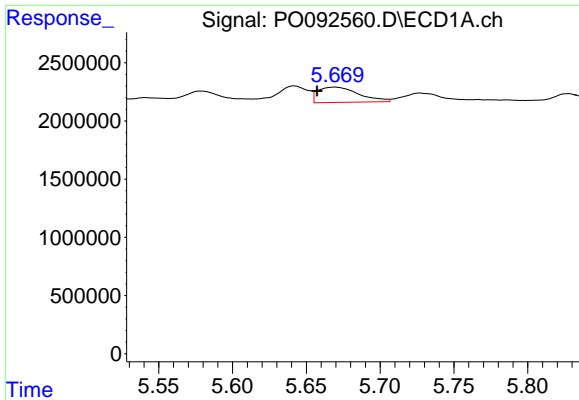
#12 AR-1232-2

R.T.: 5.369 min
 Delta R.T.: 0.007 min
 Response: 5416218
 Conc: 155.02 ng/ml



#12 AR-1232-2

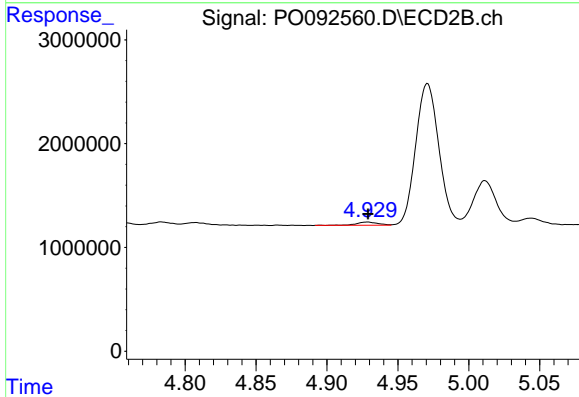
R.T.: 4.751 min
 Delta R.T.: -0.002 min
 Response: 395375
 Conc: 12.90 ng/ml



#13 AR-1232-3

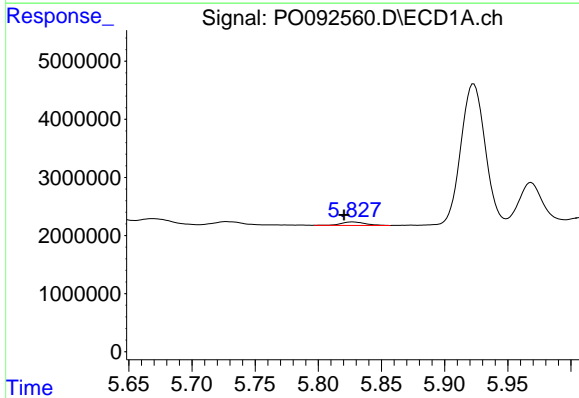
R.T.: 5.669 min
 Delta R.T.: 0.012 min
 Response: 2535784
 Conc: 41.42 ng/ml

Instrument :
 ECD_O
 ClientSampleId :
 AR1254CCC500



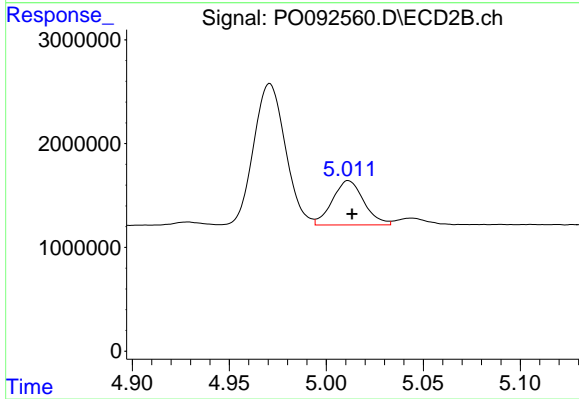
#13 AR-1232-3

R.T.: 4.929 min
 Delta R.T.: 0.000 min
 Response: 324056
 Conc: 20.13 ng/ml



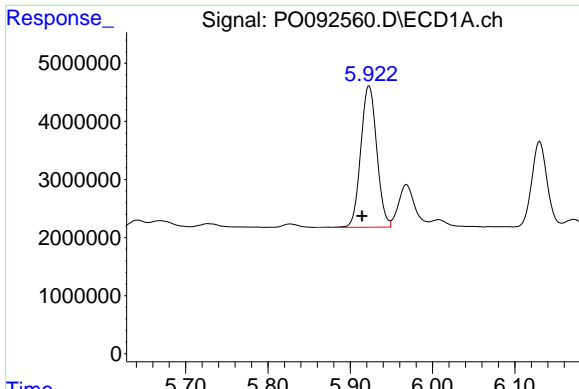
#14 AR-1232-4

R.T.: 5.827 min
 Delta R.T.: 0.007 min
 Response: 772874
 Conc: 25.79 ng/ml



#14 AR-1232-4

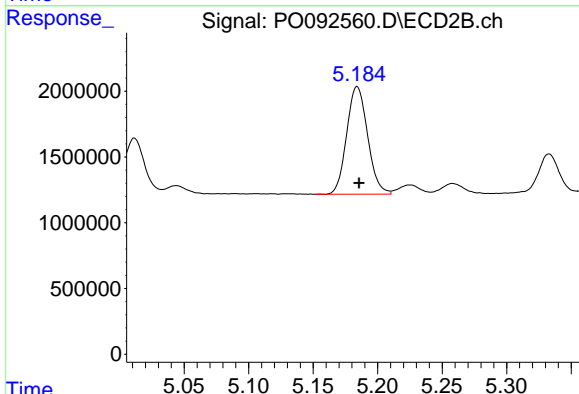
R.T.: 5.011 min
 Delta R.T.: -0.002 min
 Response: 4800263
 Conc: 293.89 ng/ml



#15 AR-1232-5

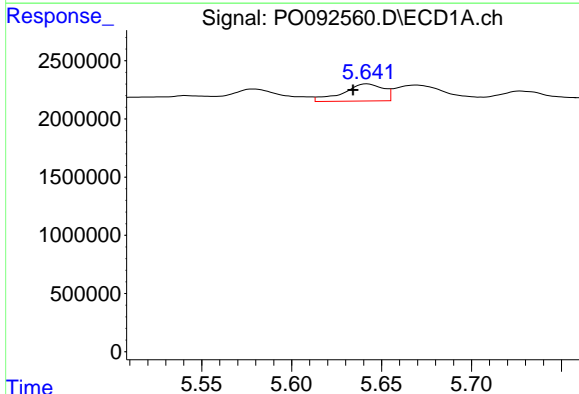
R.T.: 5.923 min
 Delta R.T.: 0.009 min
 Response: 32735145
 Conc: 1324.53 ng/ml

Instrument :
 ECD_O
 ClientSampleId :
 AR1254CCC500



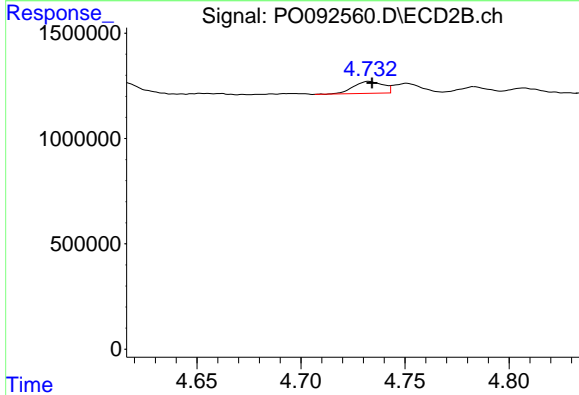
#15 AR-1232-5

R.T.: 5.184 min
 Delta R.T.: -0.002 min
 Response: 9237227
 Conc: 516.43 ng/ml



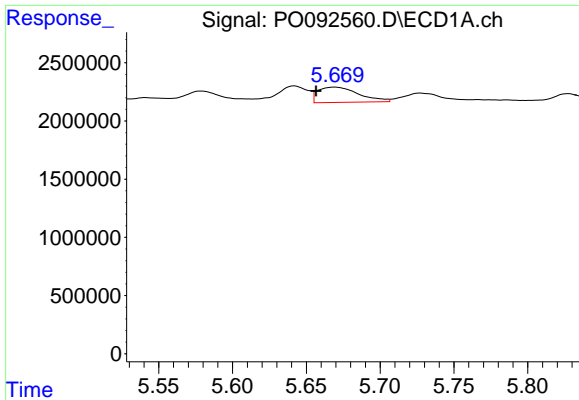
#16 AR-1242-1

R.T.: 5.642 min
 Delta R.T.: 0.008 min
 Response: 2302357
 Conc: 29.52 ng/ml



#16 AR-1242-1

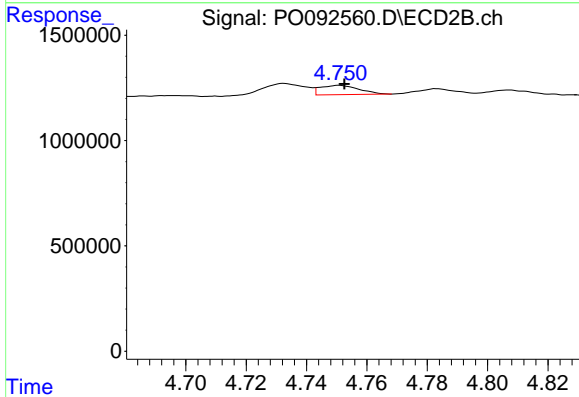
R.T.: 4.733 min
 Delta R.T.: -0.002 min
 Response: 564779
 Conc: 14.48 ng/ml



#17 AR-1242-2

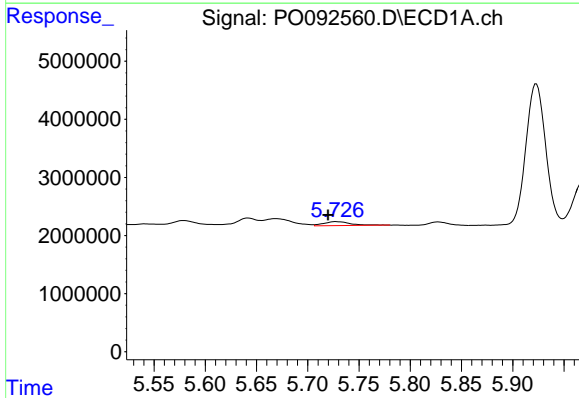
R.T.: 5.669 min
 Delta R.T.: 0.013 min
 Response: 2535784
 Conc: 22.53 ng/ml

Instrument :
 ECD_O
 ClientSampleId :
 AR1254CCC500



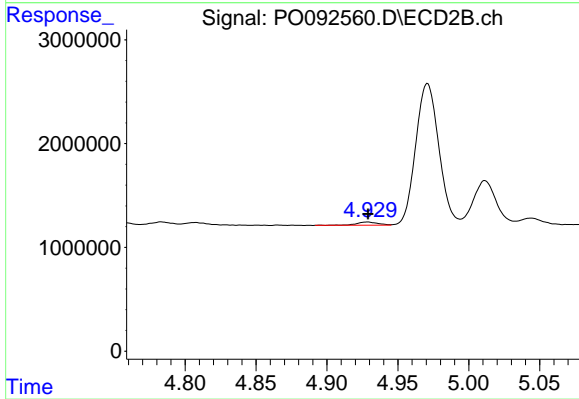
#17 AR-1242-2

R.T.: 4.751 min
 Delta R.T.: -0.002 min
 Response: 395375
 Conc: 7.28 ng/ml



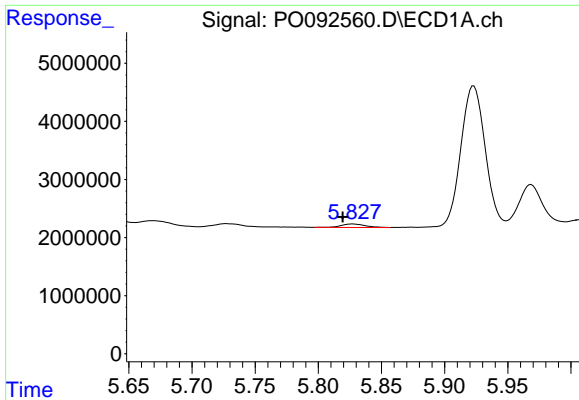
#18 AR-1242-3

R.T.: 5.727 min
 Delta R.T.: 0.007 min
 Response: 1304123
 Conc: 17.96 ng/ml



#18 AR-1242-3

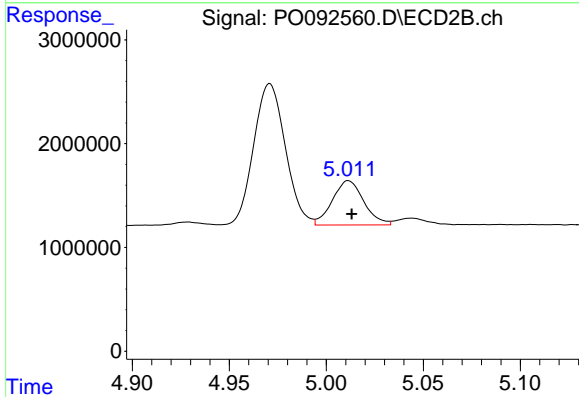
R.T.: 4.929 min
 Delta R.T.: 0.000 min
 Response: 324056
 Conc: 11.13 ng/ml



#19 AR-1242-4

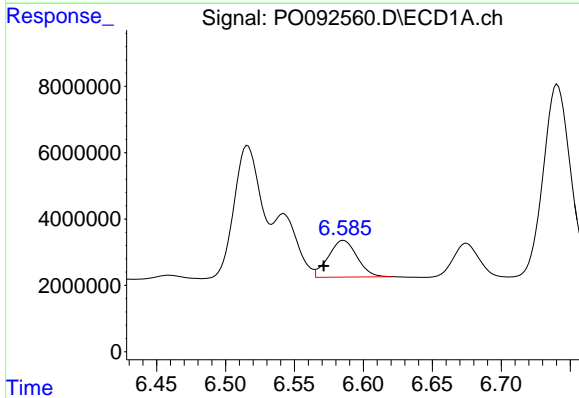
R.T.: 5.827 min
 Delta R.T.: 0.008 min
 Response: 772874
 Conc: 13.96 ng/ml

Instrument :
 ECD_O
 ClientSampleId :
 AR1254CCC500



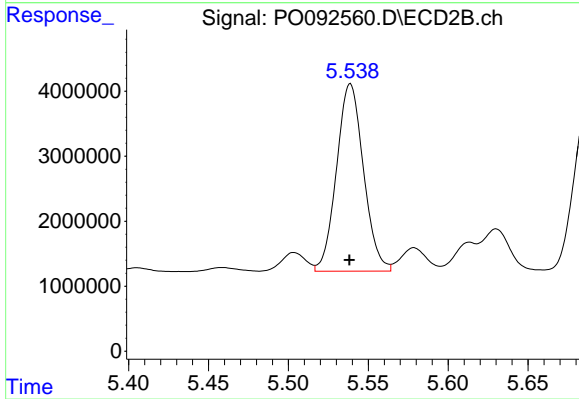
#19 AR-1242-4

R.T.: 5.011 min
 Delta R.T.: -0.002 min
 Response: 4800263
 Conc: 149.23 ng/ml



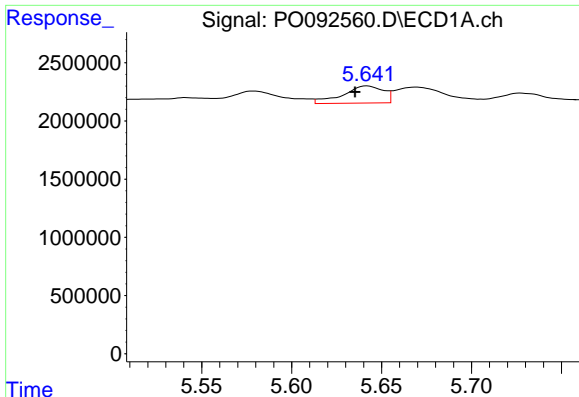
#20 AR-1242-5

R.T.: 6.586 min
 Delta R.T.: 0.014 min
 Response: 16127717
 Conc: 288.91 ng/ml



#20 AR-1242-5

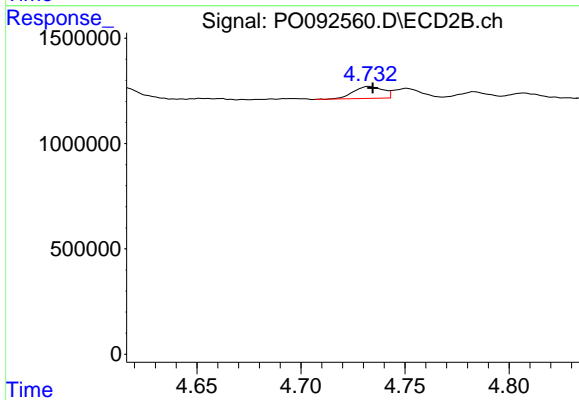
R.T.: 5.539 min
 Delta R.T.: 0.000 min
 Response: 33891703
 Conc: 936.19 ng/ml



#21 AR-1248-1

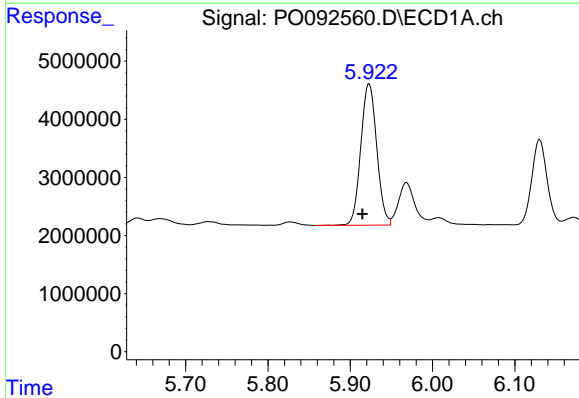
R.T.: 5.642 min
 Delta R.T.: 0.007 min
 Response: 2302357
 Conc: 39.67 ng/ml

Instrument :
 ECD_O
 ClientSampleId :
 AR1254CCC500



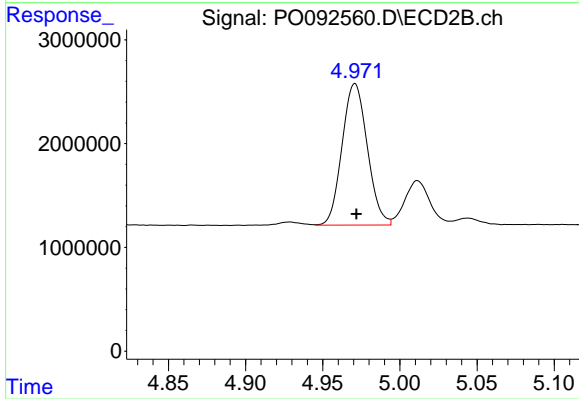
#21 AR-1248-1

R.T.: 4.733 min
 Delta R.T.: -0.002 min
 Response: 564779
 Conc: 19.39 ng/ml



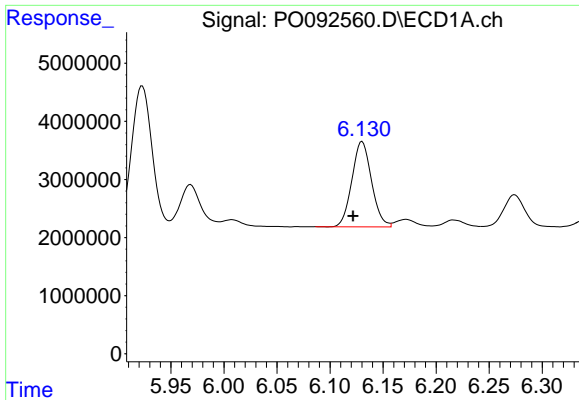
#22 AR-1248-2

R.T.: 5.923 min
 Delta R.T.: 0.008 min
 Response: 32735145
 Conc: 358.22 ng/ml



#22 AR-1248-2

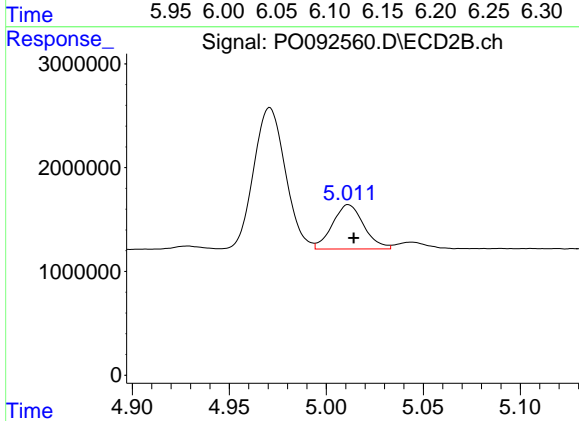
R.T.: 4.971 min
 Delta R.T.: -0.001 min
 Response: 15501236
 Conc: 343.58 ng/ml



#23 AR-1248-3

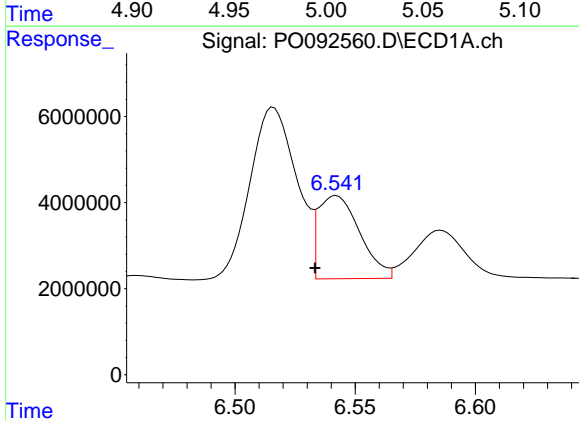
R.T.: 6.130 min
 Delta R.T.: 0.008 min
 Response: 18890428
 Conc: 192.61 ng/ml

Instrument :
 ECD_O
 ClientSampleId :
 AR1254CCC500



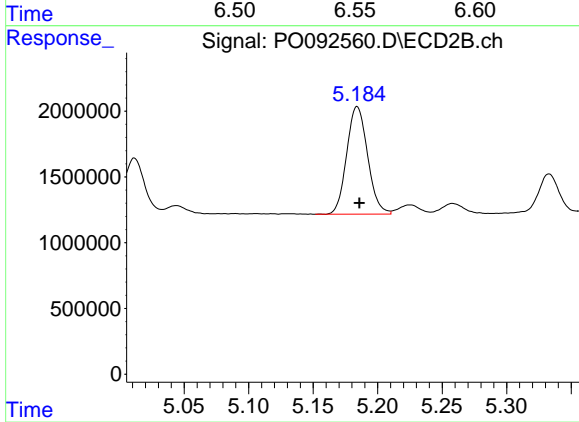
#23 AR-1248-3

R.T.: 5.011 min
 Delta R.T.: -0.003 min
 Response: 4800263
 Conc: 102.92 ng/ml



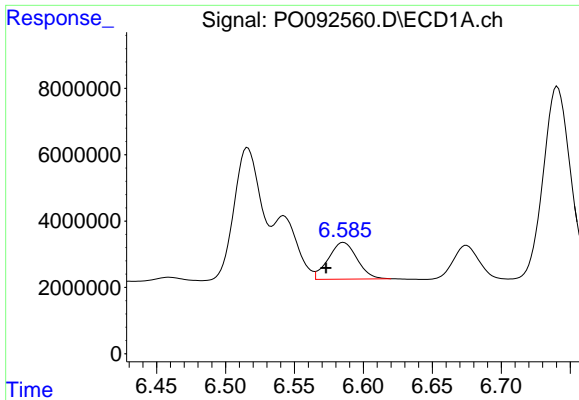
#24 AR-1248-4

R.T.: 6.542 min
 Delta R.T.: 0.009 min
 Response: 23229809
 Conc: 237.26 ng/ml



#24 AR-1248-4

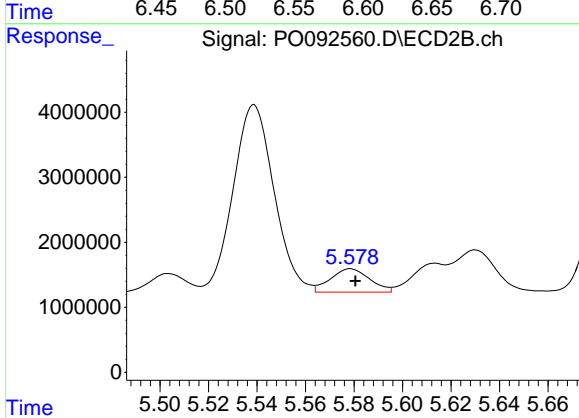
R.T.: 5.184 min
 Delta R.T.: -0.002 min
 Response: 9237227
 Conc: 171.92 ng/ml



#25 AR-1248-5

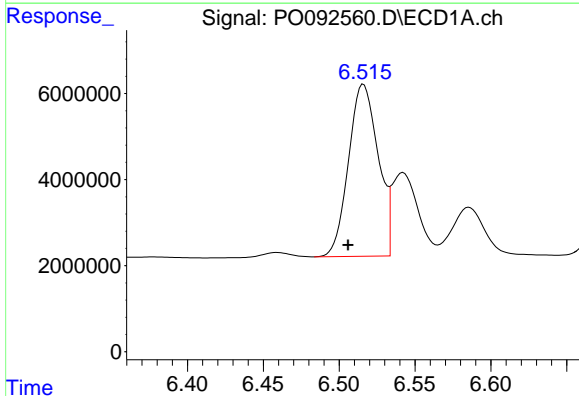
R.T.: 6.586 min
 Delta R.T.: 0.013 min
 Response: 16127717
 Conc: 171.06 ng/ml

Instrument :
 ECD_O
 ClientSampleId :
 AR1254CCC500



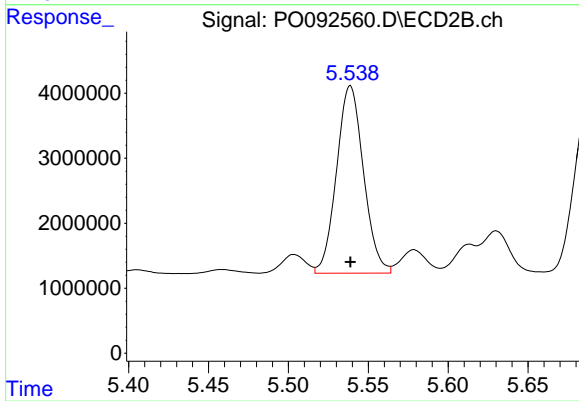
#25 AR-1248-5

R.T.: 5.579 min
 Delta R.T.: -0.002 min
 Response: 4052745
 Conc: 85.61 ng/ml



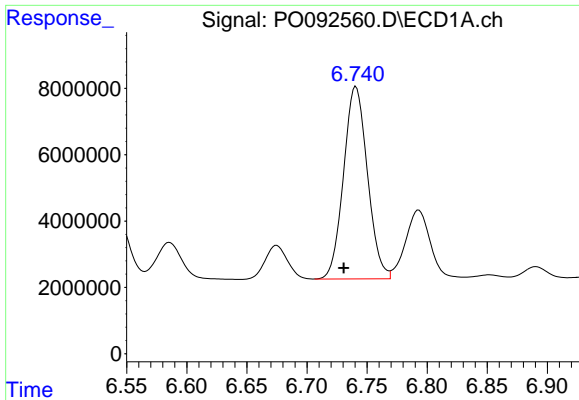
#26 AR-1254-1

R.T.: 6.516 min
 Delta R.T.: 0.010 min
 Response: 54299861
 Conc: 490.44 ng/ml



#26 AR-1254-1

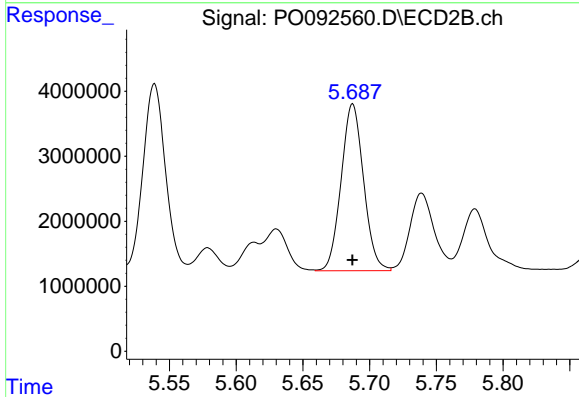
R.T.: 5.539 min
 Delta R.T.: 0.000 min
 Response: 33891703
 Conc: 432.35 ng/ml



#27 AR-1254-2

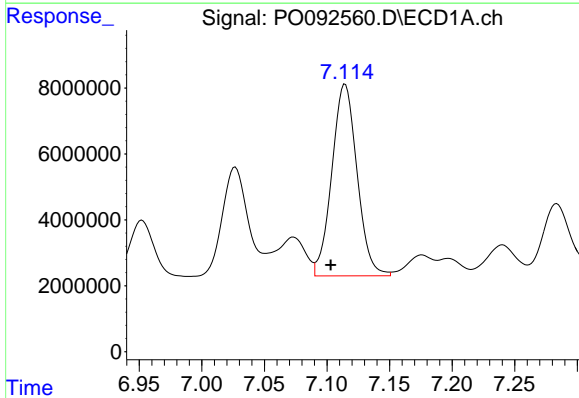
R.T.: 6.741 min
 Delta R.T.: 0.010 min
 Response: 80176155
 Conc: 493.23 ng/ml

Instrument :
 ECD_O
 ClientSampleId :
 AR1254CCC500



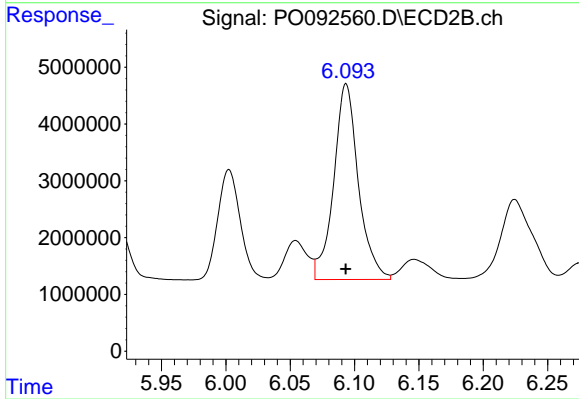
#27 AR-1254-2

R.T.: 5.687 min
 Delta R.T.: 0.000 min
 Response: 30019741
 Conc: 433.87 ng/ml



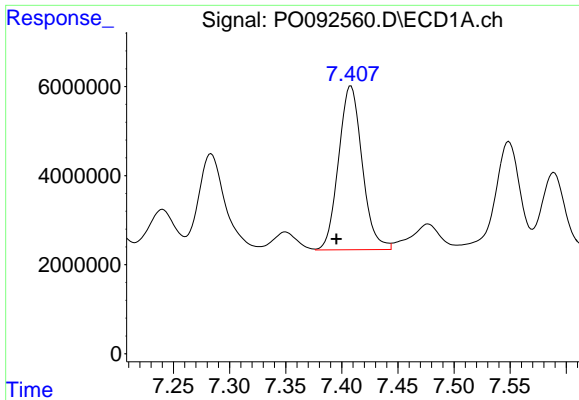
#28 AR-1254-3

R.T.: 7.115 min
 Delta R.T.: 0.012 min
 Response: 81798477
 Conc: 495.96 ng/ml



#28 AR-1254-3

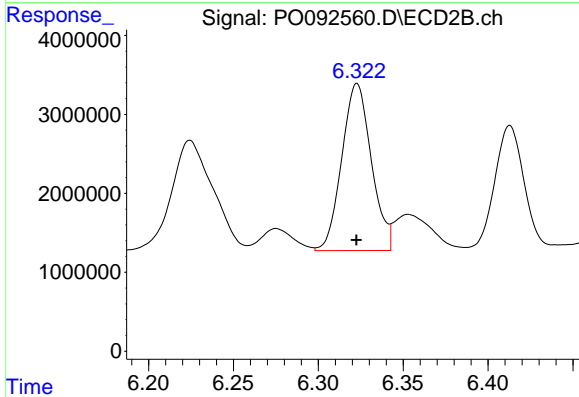
R.T.: 6.093 min
 Delta R.T.: 0.000 min
 Response: 46037803
 Conc: 431.33 ng/ml



#29 AR-1254-4

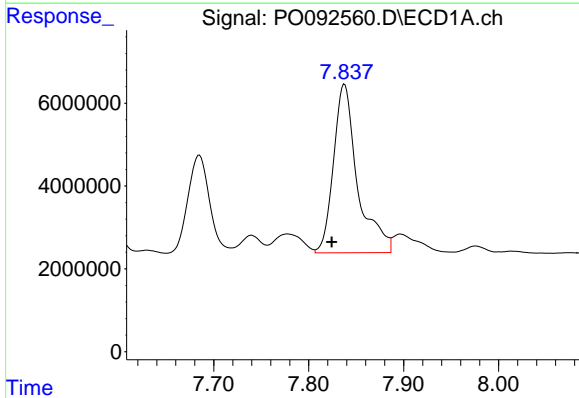
R.T.: 7.408 min
 Delta R.T.: 0.013 min
 Response: 53905227
 Conc: 492.80 ng/ml

Instrument :
 ECD_O
 ClientSampleId :
 AR1254CCC500



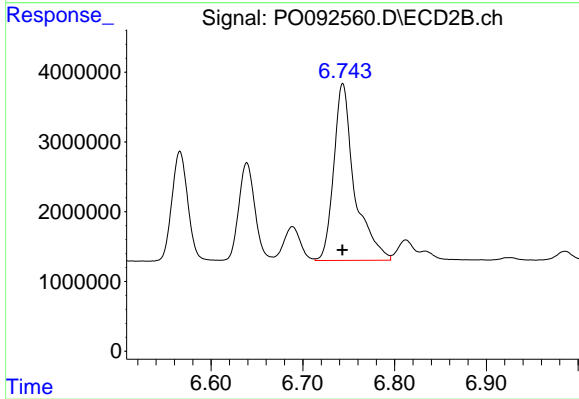
#29 AR-1254-4

R.T.: 6.323 min
 Delta R.T.: 0.000 min
 Response: 25644025
 Conc: 435.42 ng/ml



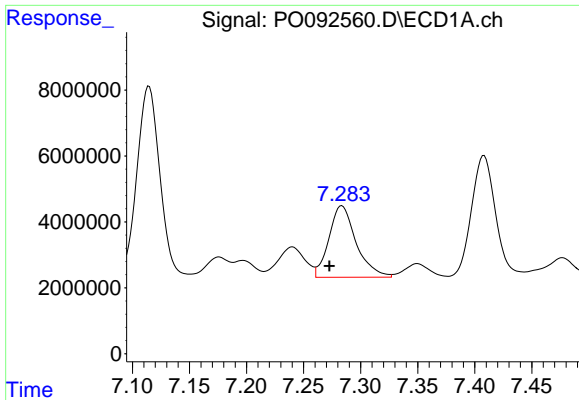
#30 AR-1254-5

R.T.: 7.838 min
 Delta R.T.: 0.013 min
 Response: 71590210
 Conc: 508.82 ng/ml



#30 AR-1254-5

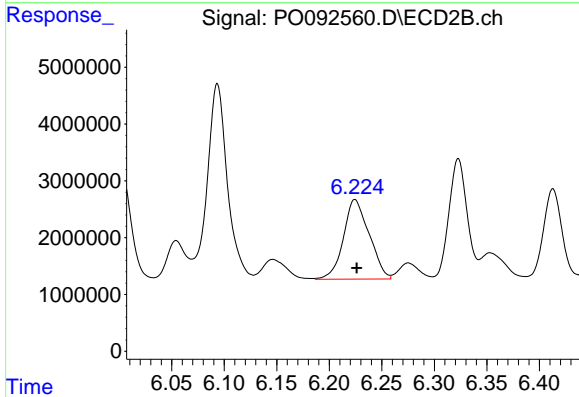
R.T.: 6.744 min
 Delta R.T.: 0.000 min
 Response: 39947143
 Conc: 438.90 ng/ml



#31 AR-1260-1

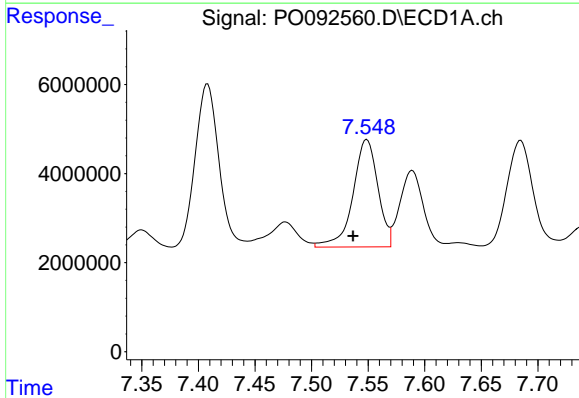
R.T.: 7.284 min
 Delta R.T.: 0.011 min
 Response: 36052287
 Conc: 273.63 ng/ml

Instrument :
 ECD_O
 ClientSampleId :
 AR1254CCC500



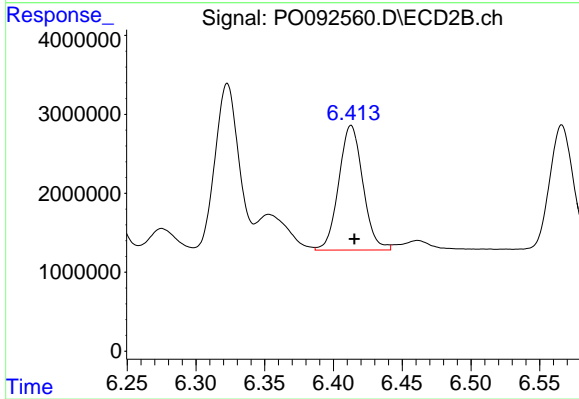
#31 AR-1260-1

R.T.: 6.224 min
 Delta R.T.: -0.002 min
 Response: 23924994
 Conc: 316.72 ng/ml



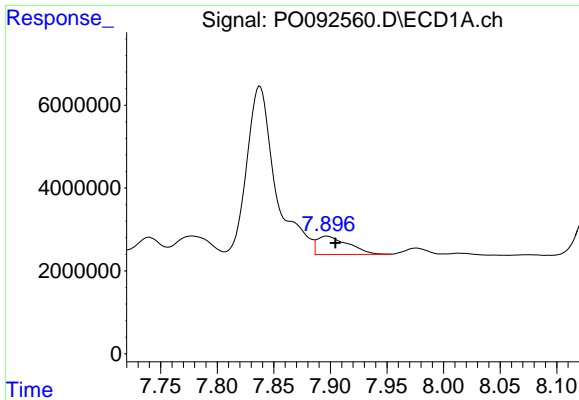
#32 AR-1260-2

R.T.: 7.549 min
 Delta R.T.: 0.012 min
 Response: 37059646
 Conc: 249.92 ng/ml



#32 AR-1260-2

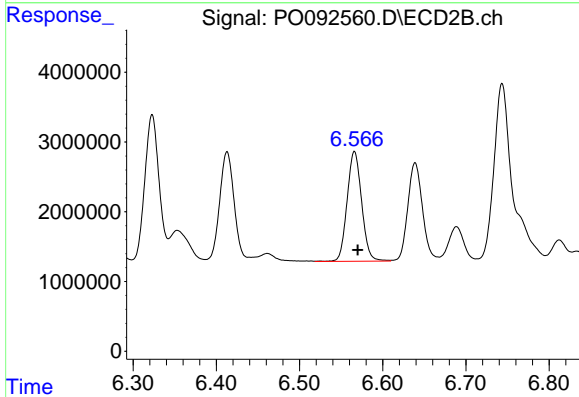
R.T.: 6.413 min
 Delta R.T.: -0.002 min
 Response: 19316518
 Conc: 220.47 ng/ml



#33 AR-1260-3

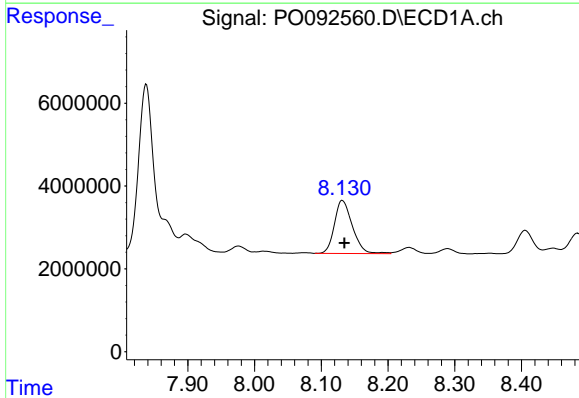
R.T.: 7.897 min
 Delta R.T.: -0.008 min
 Response: 8437402
 Conc: 74.49 ng/ml

Instrument :
 ECD_O
 ClientSampleId :
 AR1254CCC500



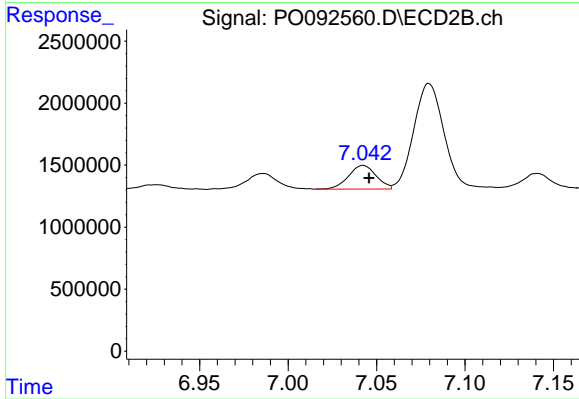
#33 AR-1260-3

R.T.: 6.566 min
 Delta R.T.: -0.004 min
 Response: 19136029
 Conc: 220.74 ng/ml



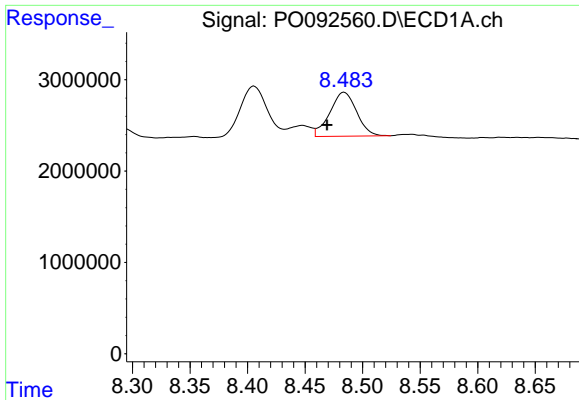
#34 AR-1260-4

R.T.: 8.132 min
 Delta R.T.: -0.003 min
 Response: 23936283
 Conc: 193.09 ng/ml



#34 AR-1260-4

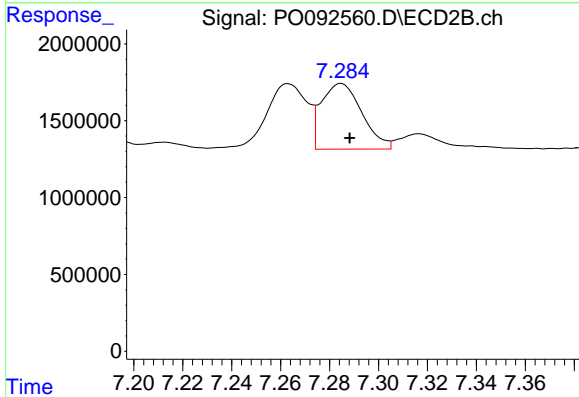
R.T.: 7.042 min
 Delta R.T.: -0.003 min
 Response: 2064224
 Conc: 30.82 ng/ml



#35 AR-1260-5

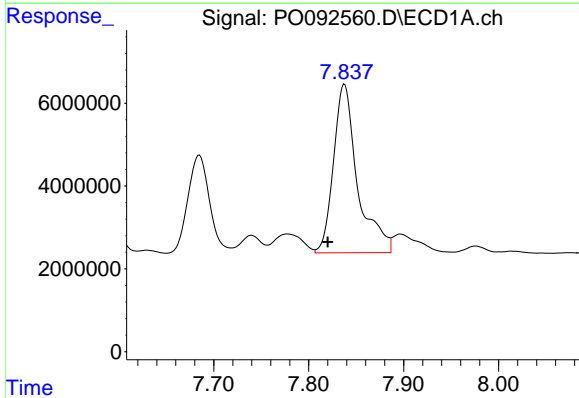
R.T.: 8.484 min
 Delta R.T.: 0.015 min
 Response: 7807401
 Conc: 35.16 ng/ml

Instrument :
 ECD_O
 ClientSampleId :
 AR1254CCC500



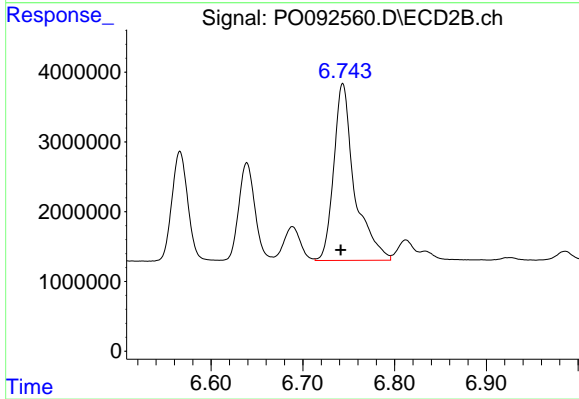
#35 AR-1260-5

R.T.: 7.285 min
 Delta R.T.: -0.004 min
 Response: 4922864
 Conc: 34.59 ng/ml



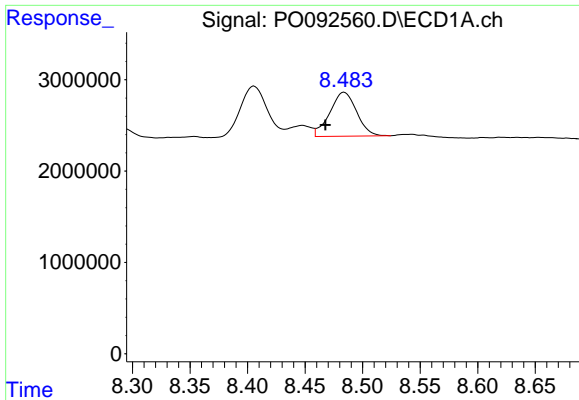
#36 AR-1262-1

R.T.: 7.838 min
 Delta R.T.: 0.018 min
 Response: 71590210
 Conc: 662.57 ng/ml



#36 AR-1262-1

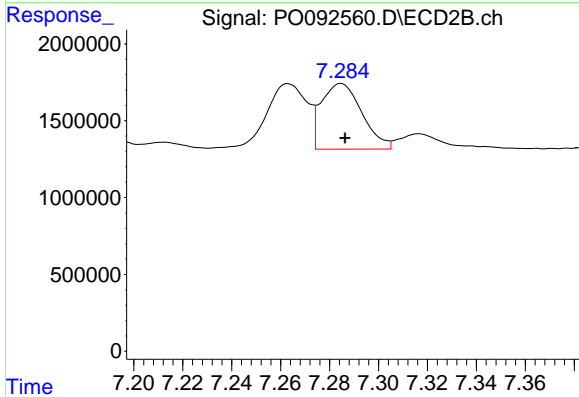
R.T.: 6.744 min
 Delta R.T.: 0.002 min
 Response: 39947143
 Conc: 860.75 ng/ml



#37 AR-1262-2

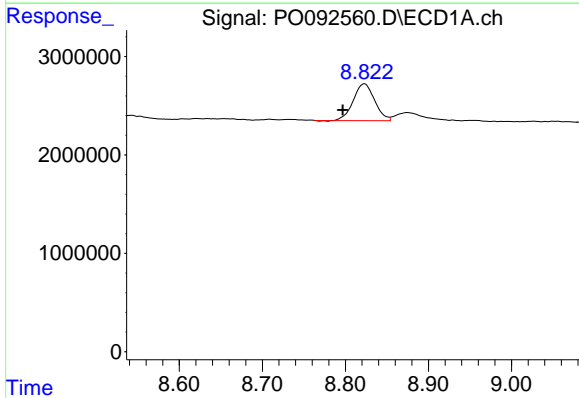
R.T.: 8.484 min
 Delta R.T.: 0.016 min
 Response: 7807401
 Conc: 32.71 ng/ml

Instrument :
 ECD_O
 ClientSampleId :
 AR1254CCC500



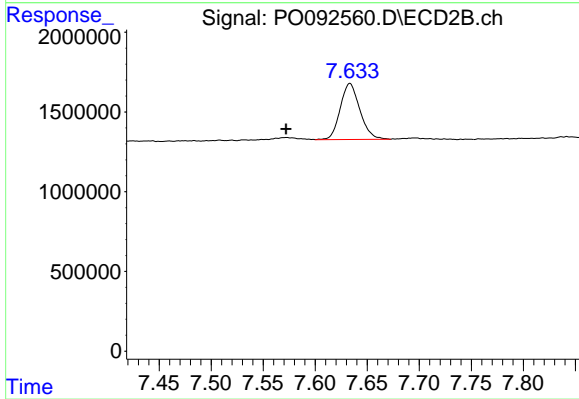
#37 AR-1262-2

R.T.: 7.285 min
 Delta R.T.: -0.002 min
 Response: 4922864
 Conc: 33.37 ng/ml



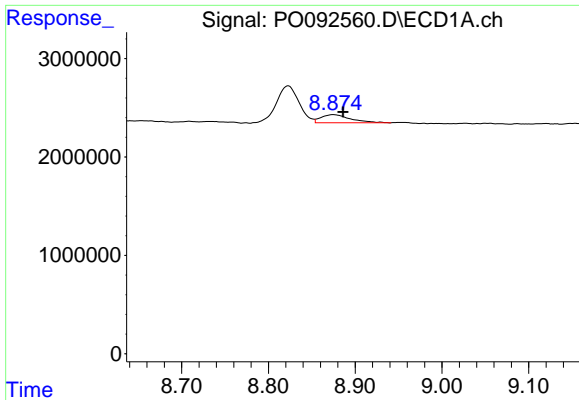
#38 AR-1262-3

R.T.: 8.823 min
 Delta R.T.: 0.026 min
 Response: 6687175
 Conc: 39.56 ng/ml



#38 AR-1262-3

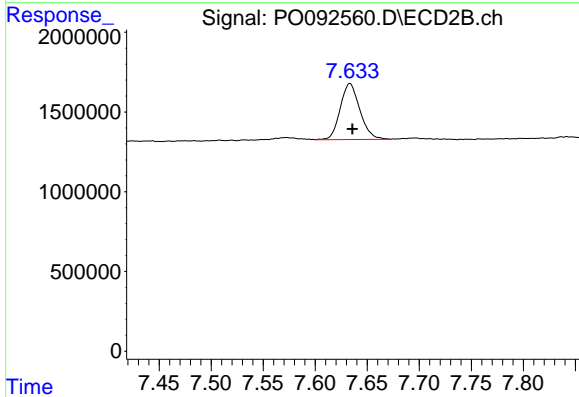
R.T.: 7.633 min
 Delta R.T.: 0.061 min
 Response: 4593590
 Conc: 73.50 ng/ml



#39 AR-1262-4

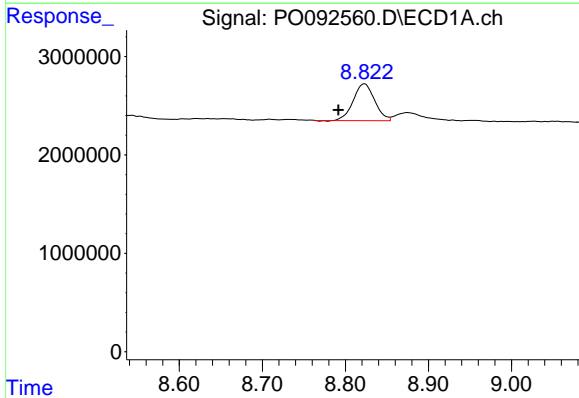
R.T.: 8.875 min
 Delta R.T.: -0.011 min
 Response: 1945067
 Conc: 19.12 ng/ml

Instrument :
 ECD_O
 ClientSampleId :
 AR1254CCC500



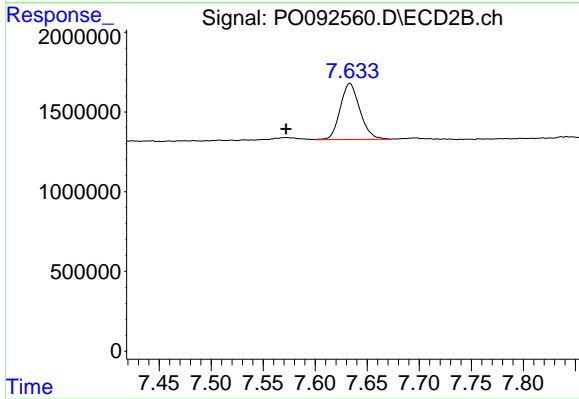
#39 AR-1262-4

R.T.: 7.633 min
 Delta R.T.: -0.002 min
 Response: 4593590
 Conc: 41.93 ng/ml



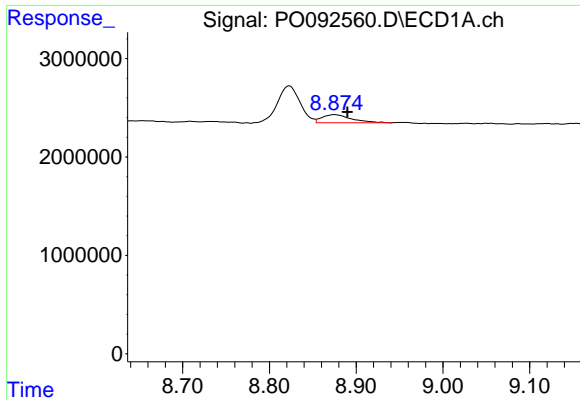
#41 AR-1268-1

R.T.: 8.823 min
 Delta R.T.: 0.031 min
 Response: 6687175
 Conc: 21.14 ng/ml



#41 AR-1268-1

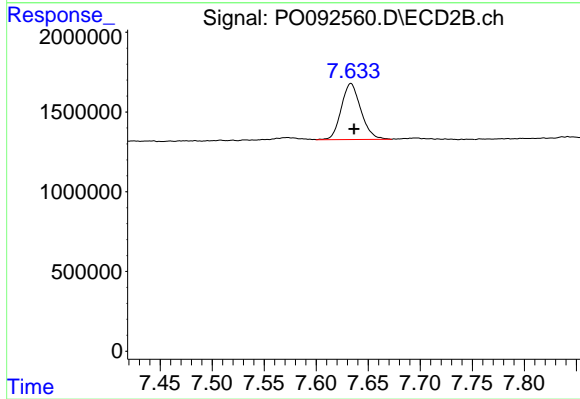
R.T.: 7.633 min
 Delta R.T.: 0.061 min
 Response: 4593590
 Conc: 25.24 ng/ml



#42 AR-1268-2

R.T.: 8.875 min
Delta R.T.: -0.015 min
Response: 1945067
Conc: 6.44 ng/ml

Instrument :
ECD_O
ClientSampleId :
AR1254CCC500



#42 AR-1268-2

R.T.: 7.633 min
Delta R.T.: -0.003 min
Response: 4593590
Conc: 27.76 ng/ml