

Data Path : Z:\pestpcbsrv\HPCHEM1\ECD_0\Data\P0021819\
 Data File : P0053920.D
 Signal(s) : Signal #1: ECD1A.CH Signal #2: ECD2B.CH
 Acq On : 18 Feb 2019 18:35
 Operator : SM/SJ
 Sample : AR1254ICC050
 Misc :
 ALS Vial : 16 Sample Multiplier: 1

Instrument :
 ECD_0
 ClientSampleId :
 AR1254ICC050

Integration File signal 1: autoint1.e
 Integration File signal 2: autoint2.e
 Quant Time: Feb 19 03:09:06 2019
 Quant Method : Z:\pestpcbsrv\HPCHEM1\ECD_0\methods\P0021819.M
 Quant Title : GC EXTRACTABLES
 QLast Update : Tue Feb 19 03:07:07 2019
 Response via : Initial Calibration
 Integrator: ChemStation 6890 Scale Mode: Small noise peaks clipped

Volume Inj. : 2 µl
 Signal #1 Phase : ZB-MR1 Signal #2 Phase: ZB-MR2
 Signal #1 Info : 30Mx0.32mmx 0.50µ Signal #2 Info : 30M x 0.32mm x 0.25µm

Compound	RT#1	RT#2	Resp#1	Resp#2	ng/ml	ng/ml

System Monitoring Compounds						
1) SA Tetrachlo...	4.066	3.140	14379015	1400335	5.533	5.847
2) SA Decachlor...	9.420	7.727	6581818	1816264	5.845	6.787
Target Compounds						
26) L6 AR-1254-1	6.027	4.834	8996905	3062973	58.759	66.955
27) L6 AR-1254-2	6.239	4.973	13674384	2575377	57.223	66.042
28) L6 AR-1254-3	6.602	5.343	13557093	4063164	54.207	64.904
29) L6 AR-1254-4	6.883	5.562	10271755	2701528	55.478	65.502
30) L6 AR-1254-5	7.291	5.949	9476596	3408709	53.422	73.075 #

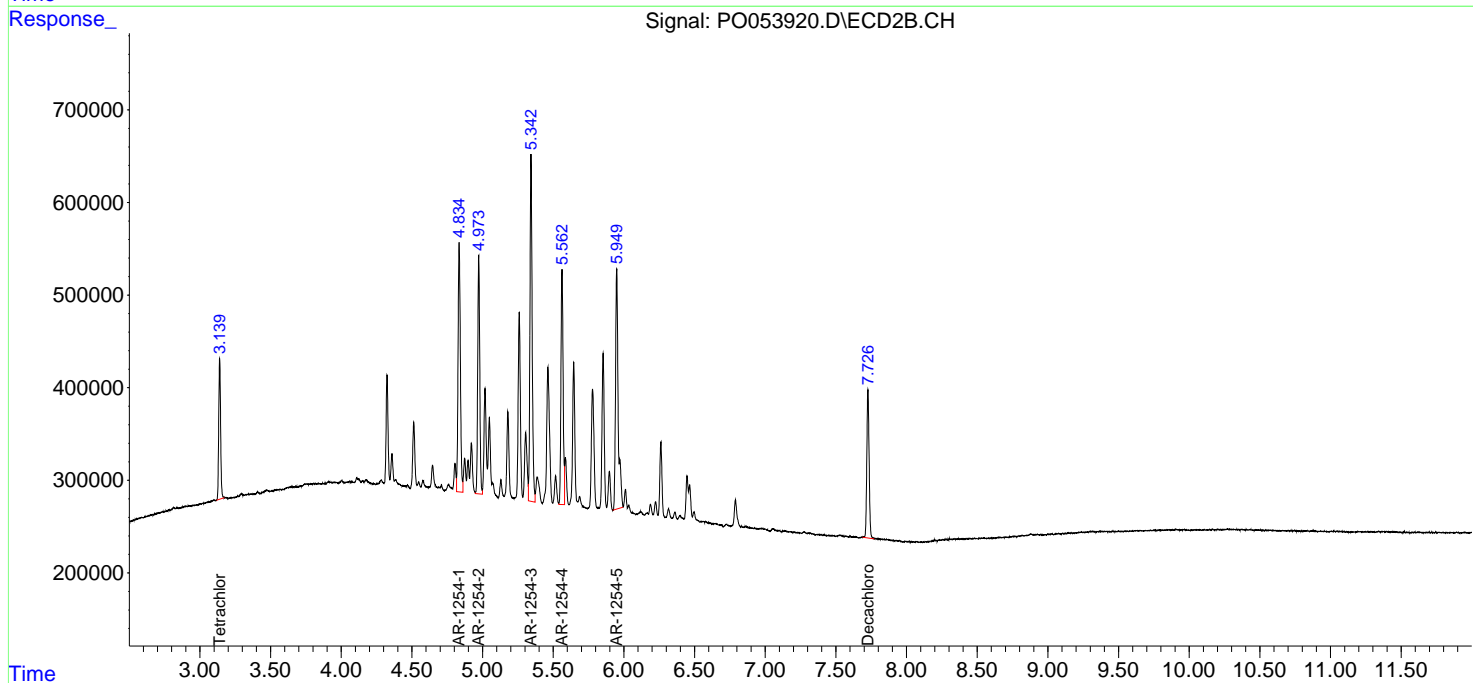
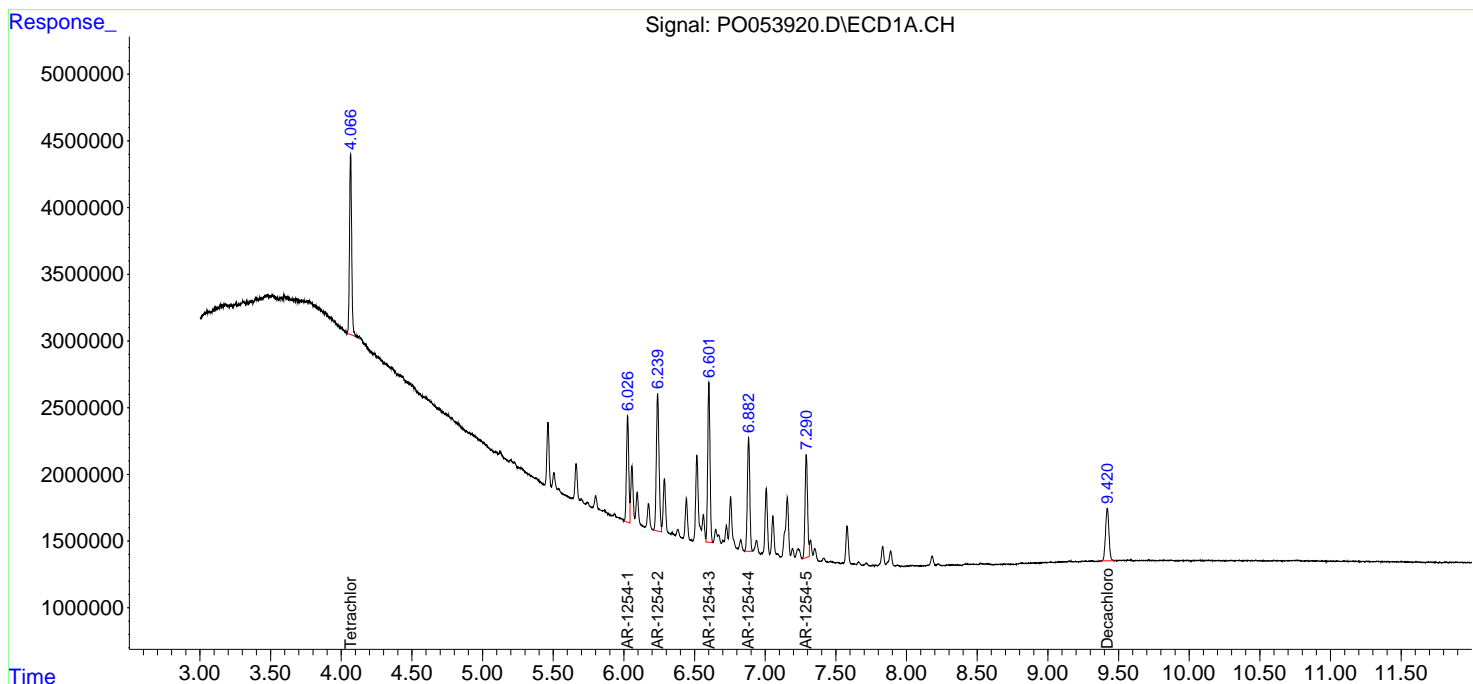
(f)=RT Delta > 1/2 Window (#)=Amounts differ by > 25% (m)=manual int.

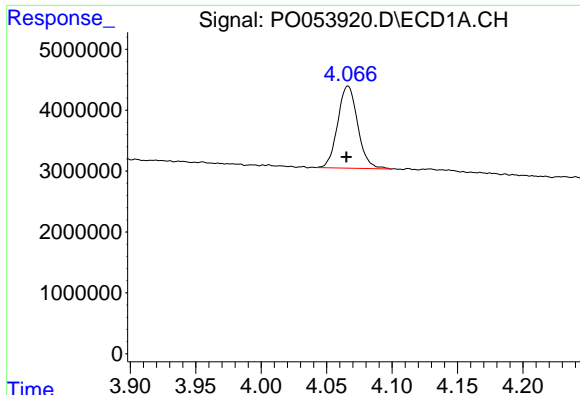
Data Path : Z:\pestpcbsrv\HPCHEM1\ECD_0\Data\P0021819\
 Data File : P0053920.D
 Signal(s) : Signal #1: ECD1A.CH Signal #2: ECD2B.CH
 Acq On : 18 Feb 2019 18:35
 Operator : SM/SJ
 Sample : AR1254ICC050
 Misc :
 ALS Vial : 16 Sample Multiplier: 1

Instrument :
 ECD_O
 ClientSampleId :
 AR1254ICC050

Integration File signal 1: autoint1.e
 Integration File signal 2: autoint2.e
 Quant Time: Feb 19 03:09:06 2019
 Quant Method : Z:\pestpcbsrv\HPCHEM1\ECD_0\methods\P0021819.M
 Quant Title : GC EXTRACTABLES
 QLast Update : Tue Feb 19 03:07:07 2019
 Response via : Initial Calibration
 Integrator: ChemStation 6890 Scale Mode: Small noise peaks clipped

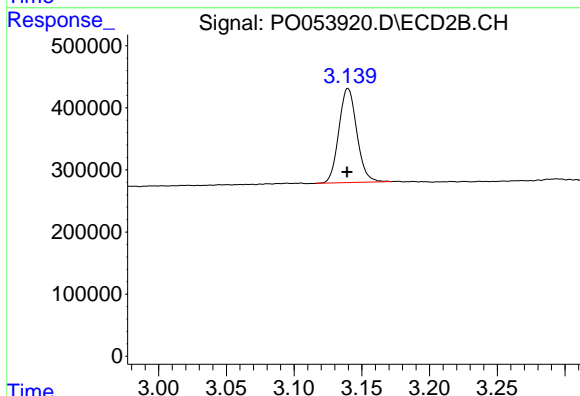
Volume Inj. : 2 µl
 Signal #1 Phase : ZB-MR1 Signal #2 Phase: ZB-MR2
 Signal #1 Info : 30Mx0.32mmx 0.50µ Signal #2 Info : 30M x 0.32mm x 0.25µm



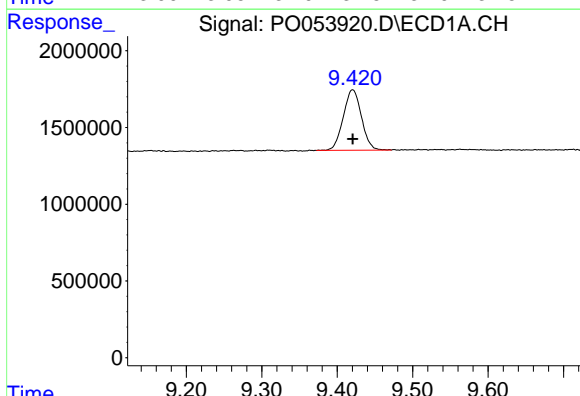


#1 Tetrachloro-m-xylene
 R.T.: 4.066 min
 Delta R.T.: 0.001 min
 Response: 14379015
 Conc: 5.53 ng/ml

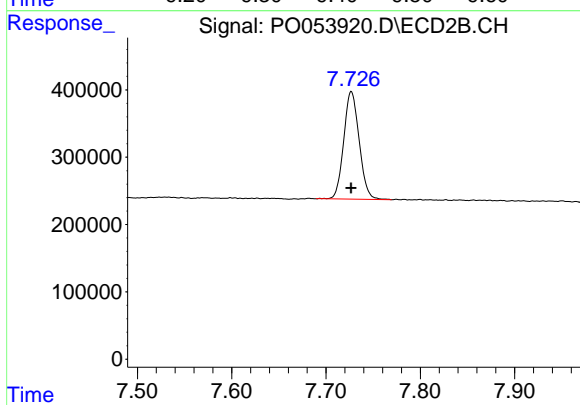
Instrument :
 ECD_O
 ClientSampleId :
 AR1254ICC050



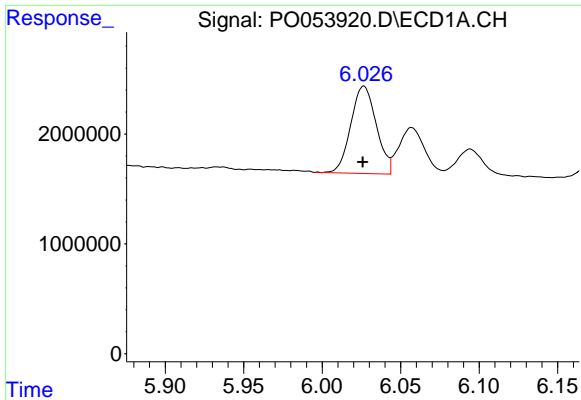
#1 Tetrachloro-m-xylene
 R.T.: 3.140 min
 Delta R.T.: 0.000 min
 Response: 1400335
 Conc: 5.85 ng/ml



#2 Decachlorobiphenyl
 R.T.: 9.420 min
 Delta R.T.: 0.000 min
 Response: 6581818
 Conc: 5.85 ng/ml



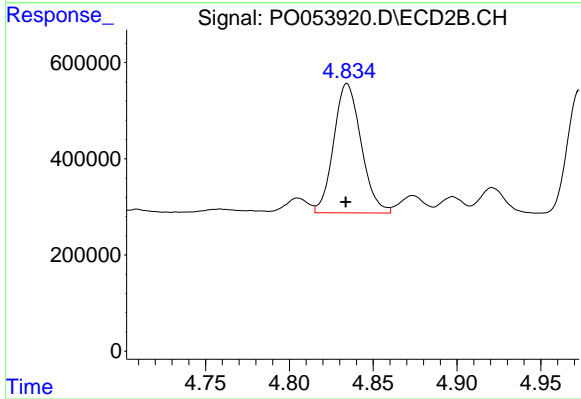
#2 Decachlorobiphenyl
 R.T.: 7.727 min
 Delta R.T.: 0.000 min
 Response: 1816264
 Conc: 6.79 ng/ml



#26 AR-1254-1

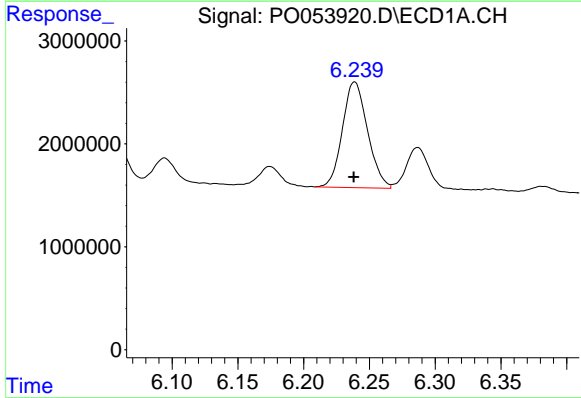
R.T.: 6.027 min
Delta R.T.: 0.000 min
Response: 8996905
Conc: 58.76 ng/ml

Instrument :
ECD_O
ClientSampled :
AR1254ICC050



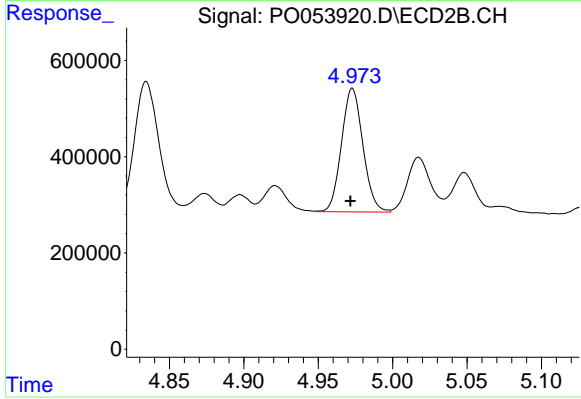
#26 AR-1254-1

R.T.: 4.834 min
Delta R.T.: 0.000 min
Response: 3062973
Conc: 66.96 ng/ml



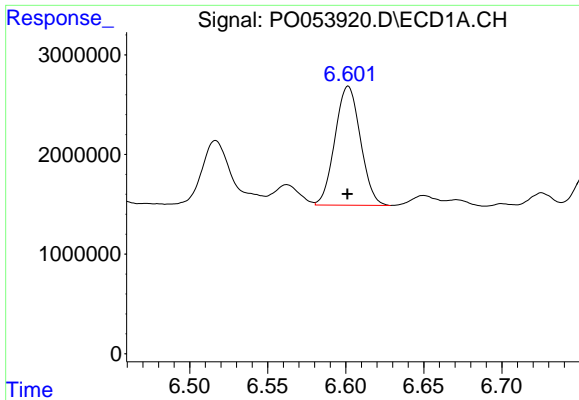
#27 AR-1254-2

R.T.: 6.239 min
Delta R.T.: 0.000 min
Response: 13674384
Conc: 57.22 ng/ml



#27 AR-1254-2

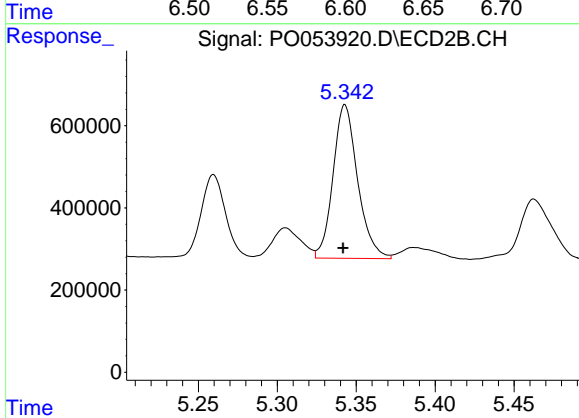
R.T.: 4.973 min
Delta R.T.: 0.001 min
Response: 2575377
Conc: 66.04 ng/ml



#28 AR-1254-3

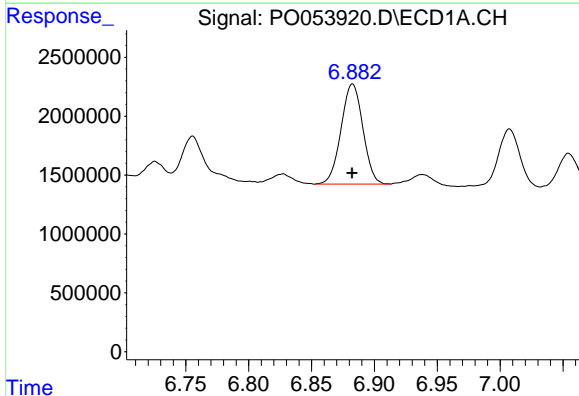
R.T.: 6.602 min
 Delta R.T.: 0.000 min
 Response: 13557093
 Conc: 54.21 ng/ml

Instrument :
 ECD_O
ClientSampleId :
 AR1254ICC050



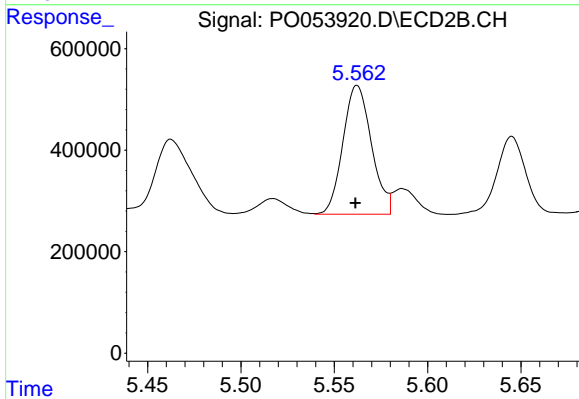
#28 AR-1254-3

R.T.: 5.343 min
 Delta R.T.: 0.001 min
 Response: 4063164
 Conc: 64.90 ng/ml



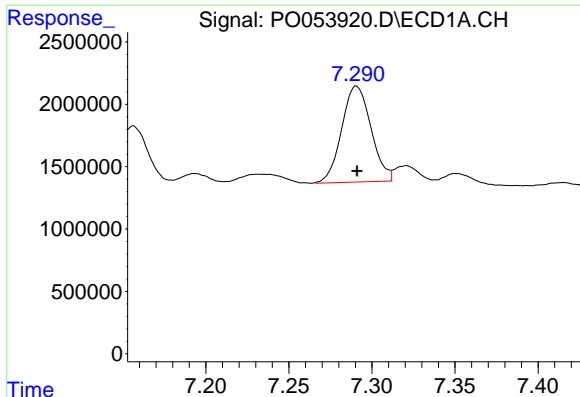
#29 AR-1254-4

R.T.: 6.883 min
 Delta R.T.: 0.000 min
 Response: 10271755
 Conc: 55.48 ng/ml



#29 AR-1254-4

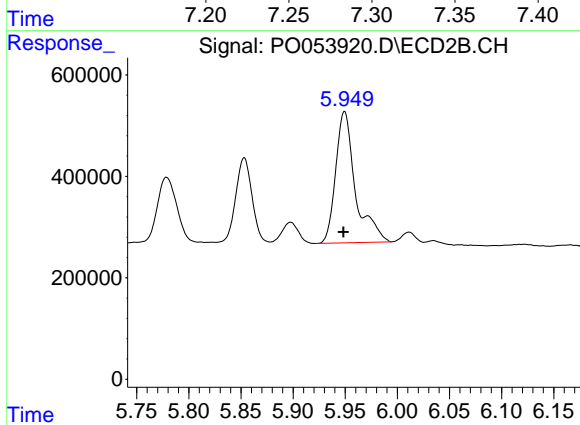
R.T.: 5.562 min
 Delta R.T.: 0.000 min
 Response: 2701528
 Conc: 65.50 ng/ml



#30 AR-1254-5

R.T.: 7.291 min
Delta R.T.: 0.000 min
Response: 9476596
Conc: 53.42 ng/ml

Instrument :
ECD_O
ClientSampled :
AR1254ICC050



#30 AR-1254-5

R.T.: 5.949 min
Delta R.T.: 0.001 min
Response: 3408709
Conc: 73.08 ng/ml