

Data Path : Z:\pestpcbsrv\HPCHEM1\ECD\_0\Data\P0022120\  
 Data File : P0066704.D  
 Signal(s) : Signal #1: ECD1A.CH Signal #2: ECD2B.CH  
 Acq On : 21 Feb 2020 8:23  
 Operator : DD\AJ  
 Sample : HEXANE  
 Misc :  
 ALS Vial : 1 Sample Multiplier: 1

Instrument :  
 ECD\_O  
 ClientSampleId :  
 HEXANE

Integration File signal 1: autoint1.e  
 Integration File signal 2: autoint2.e  
 Quant Time: Feb 21 14:59:01 2020  
 Quant Method : Z:\pestpcbsrv\HPCHEM1\ECD\_0\methods\P0022120.M  
 Quant Title : GC EXTRACTABLES  
 QLast Update : Fri Feb 21 14:58:30 2020  
 Response via : Initial Calibration  
 Integrator: ChemStation 6890 Scale Mode: Small noise peaks clipped

Volume Inj. : 2 µl  
 Signal #1 Phase : ZB-MR1 Signal #2 Phase: ZB-MR2  
 Signal #1 Info : 30Mx0.32mmx 0.50µ Signal #2 Info : 30M x 0.32mm x 0.25µm

Compound	RT#1	RT#2	Resp#1	Resp#2	ng/ml	ng/ml
-----						
System Monitoring Compounds						
1) SA Tetrachlo...	0.000	3.404	0	293833	N.D.	5.440 #
2) SA Decachlor...	9.536	0.000	45288	0	1.104	N.D. #
Target Compounds						
3) L1 AR-1016-1	5.223	4.420	49498	5991	30.628	3.728 #
4) L1 AR-1016-2	0.000	4.420	0	5991	N.D.	1.634 #
5) L1 AR-1016-3	0.000	4.677	0	65052	N.D.	46.831 #
6) L1 AR-1016-4	0.000	4.677	0	65052	N.D.	56.290 #
7) L1 AR-1016-5	0.000	4.902	0	48422	N.D.	32.977 #
8) L2 AR-1221-1	0.000	3.545	0	32582	N.D.	62.730 #
10) L2 AR-1221-3	0.000	3.819	0	32466	N.D.	27.266 #
11) L3 AR-1232-1	0.000	3.819	0	32466	N.D.	34.397 #
12) L3 AR-1232-2	4.978	4.420	400785	5991	958.176	4.513 #
13) L3 AR-1232-3	5.223	4.677	49498	65052	57.660	122.952 #
14) L3 AR-1232-4	0.000	4.677	0	65052	N.D.	128.627 #
15) L3 AR-1232-5	5.534	4.902	743272	48422	2561.400	76.110 #
16) L4 AR-1242-1	5.223	4.420	49498	5991	46.117	5.699 #
17) L4 AR-1242-2	5.223	4.420	49498	5991	30.579	2.524 #
18) L4 AR-1242-3	0.000	4.677	0	65052	N.D.	68.925 #
19) L4 AR-1242-4	0.000	4.677	0	65052	N.D.	69.306 #
20) L4 AR-1242-5	6.128	5.232	338542	215690	435.442	158.342 #
21) L5 AR-1248-1	5.223	4.420	49498	5991	61.892	7.237 #
22) L5 AR-1248-2	5.534	4.677	743272	65052	623.867	49.255 #
23) L5 AR-1248-3	0.000	4.677	0	65052	N.D.	48.076 #
24) L5 AR-1248-4	6.128	4.902	338542	48422	234.815	29.703 #
25) L5 AR-1248-5	6.128	5.273	338542	575200	252.094	281.133
26) L6 AR-1254-1	6.128	5.232	338542	215690	213.583	76.476 #
28) L6 AR-1254-3	6.682	5.754	69799	161812	26.397	41.949 #
29) L6 AR-1254-4	0.000	6.021	0	97956	N.D.	40.895 #
31) L7 AR-1260-1	6.885	5.909	14689	108044	6.537	36.256 #
32) L7 AR-1260-2	0.000	6.097	0	144288	N.D.	36.416 #
33) L7 AR-1260-3	0.000	6.248	0	63075	N.D.	17.912 #
34) L7 AR-1260-4	0.000	6.721	0	94880	N.D.	32.396 #
35) L7 AR-1260-5	7.998	6.943	164764	124124	26.639	16.407 #
37) L8 AR-1262-2	7.998	6.943	164764	124124	26.248	15.536 #
38) L8 AR-1262-3	0.000	7.181	0	119867	N.D.	36.857 #
39) L8 AR-1262-4	0.000	7.308	0	111542	N.D.	19.406 #
40) L8 AR-1262-5	0.000	7.776	0	67735	N.D.	27.026 #
41) L9 AR-1268-1	0.000	7.181	0	119867	N.D.	12.289 #
42) L9 AR-1268-2	0.000	7.308	0	111542	N.D.	12.270 #
43) L9 AR-1268-3	0.000	7.529	0	21878	N.D.	2.847 #
44) L9 AR-1268-4	0.000	7.776	0	67735	N.D.	22.884 #
45) L9 AR-1268-5	0.000	8.055	0	71515	N.D.	3.300 #

Data Path : Z:\pestpcbsrv\HPCHEM1\ECD\_O\Data\P0022120\  
Data File : P0066704.D  
Signal(s) : Signal #1: ECD1A.CH Signal #2: ECD2B.CH  
Acq On : 21 Feb 2020 8:23  
Operator : DD\AJ  
Sample : HEXANE  
Misc :  
ALS Vial : 1 Sample Multiplier: 1

Instrument :  
ECD\_O  
ClientSampleId :  
HEXANE

Integration File signal 1: autoint1.e  
Integration File signal 2: autoint2.e  
Quant Time: Feb 21 14:59:01 2020  
Quant Method : Z:\pestpcbsrv\HPCHEM1\ECD\_O\methods\P0022120.M  
Quant Title : GC EXTRACTABLES  
QLast Update : Fri Feb 21 14:58:30 2020  
Response via : Initial Calibration  
Integrator: ChemStation 6890 Scale Mode: Small noise peaks clipped

Volume Inj. : 2 µl  
Signal #1 Phase : ZB-MR1 Signal #2 Phase: ZB-MR2  
Signal #1 Info : 30Mx0.32mmx 0.50µ Signal #2 Info : 30M x 0.32mm x 0.25µm

Compound	RT#1	RT#2	Resp#1	Resp#2	ng/ml	ng/ml
----------	------	------	--------	--------	-------	-------

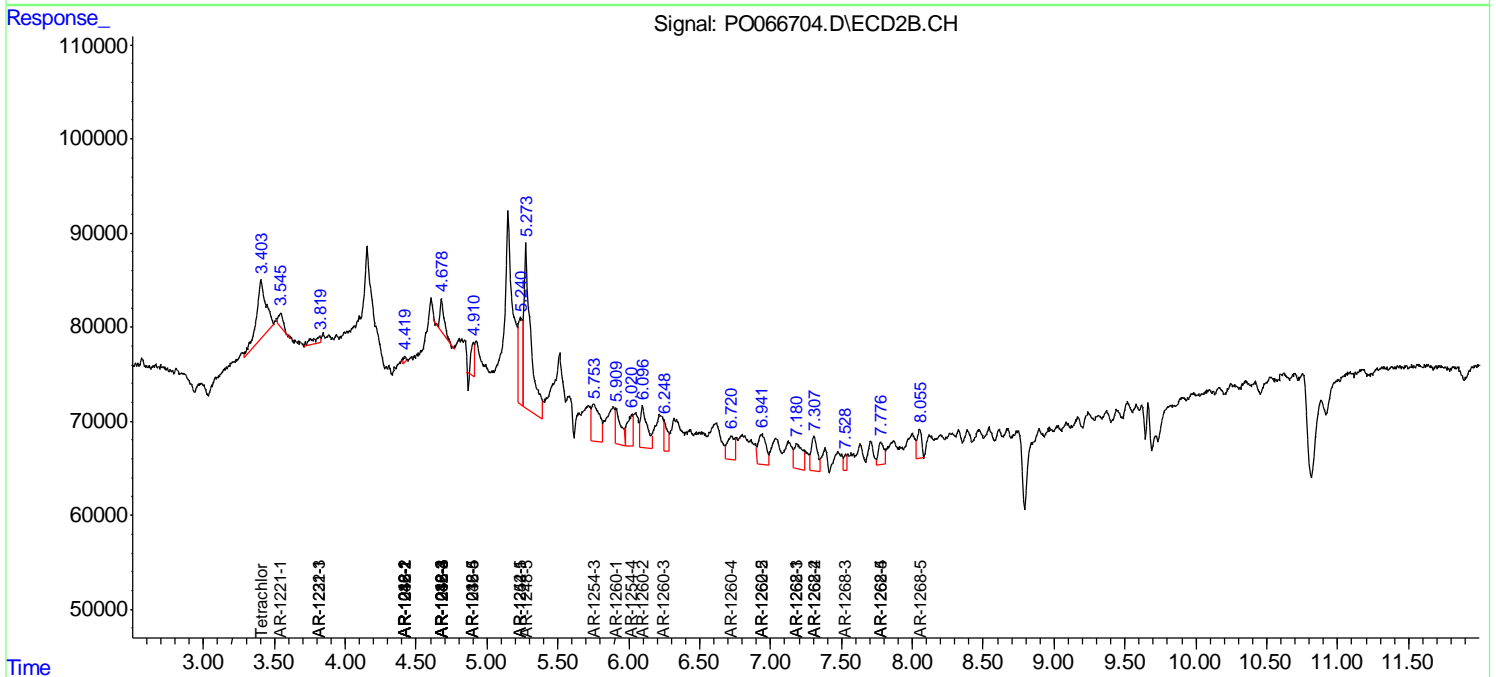
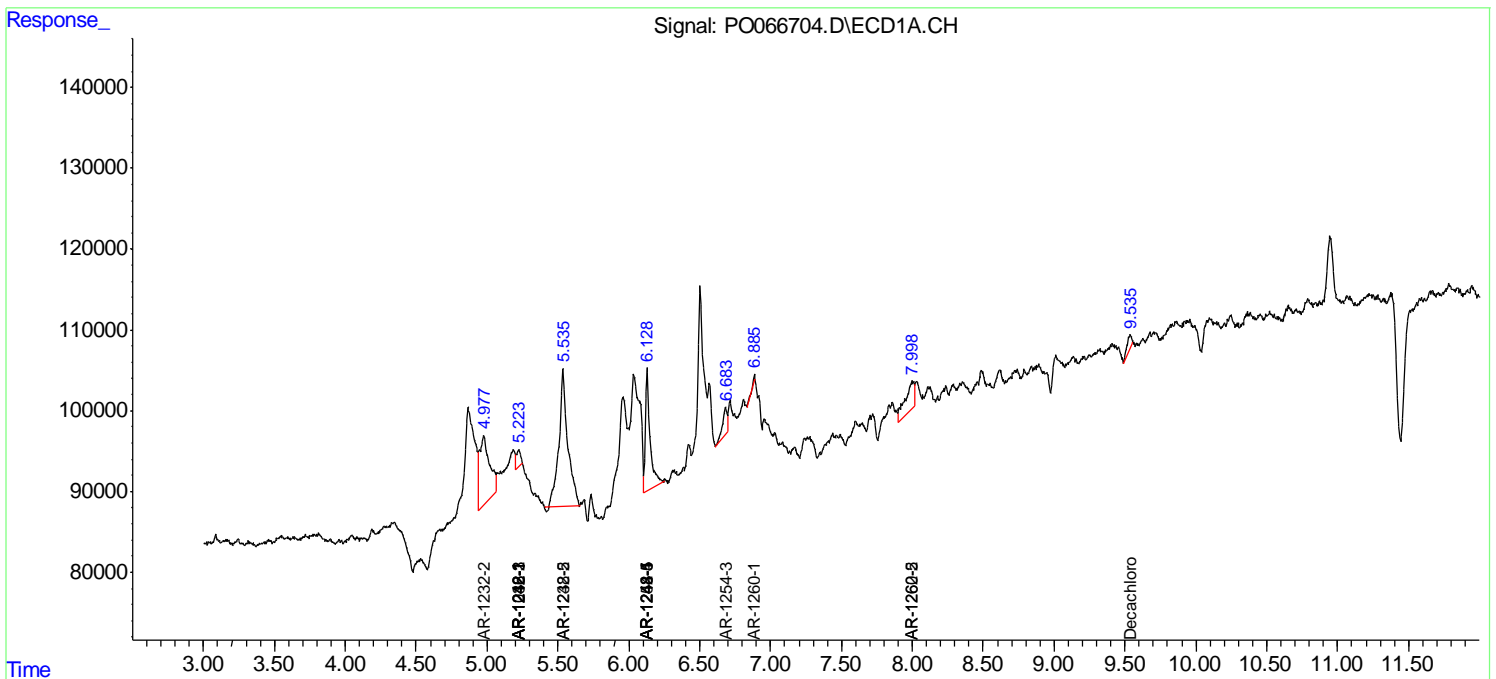
(f)=RT Delta > 1/2 Window (#)=Amounts differ by > 25% (m)=manual int.

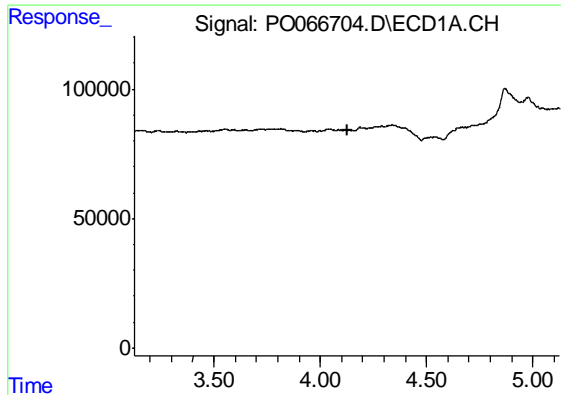
Data Path : Z:\pestpcbsrv\HPCHEM1\ECD\_O\Data\PO022120\  
 Data File : PO066704.D  
 Signal(s) : Signal #1: ECD1A.CH Signal #2: ECD2B.CH  
 Acq On : 21 Feb 2020 8:23  
 Operator : DD\AJ  
 Sample : HEXANE  
 Misc :  
 ALS Vial : 1 Sample Multiplier: 1

**Instrument :**  
 ECD\_O  
**Client Sampled :**  
 HEXANE

Integration File signal 1: autoint1.e  
 Integration File signal 2: autoint2.e  
 Quant Time: Feb 21 14:59:01 2020  
 Quant Method : Z:\pestpcbsrv\HPCHEM1\ECD\_O\methods\PO022120.M  
 Quant Title : GC EXTRACTABLES  
 QLast Update : Fri Feb 21 14:58:30 2020  
 Response via : Initial Calibration  
 Integrator: ChemStation 6890 Scale Mode: Small noise peaks clipped

Volume Inj. : 2 µl  
 Signal #1 Phase : ZB-MR1 Signal #2 Phase: ZB-MR2  
 Signal #1 Info : 30Mx0.32mmx 0.50µ Signal #2 Info : 30M x 0.32mm x 0.25µm

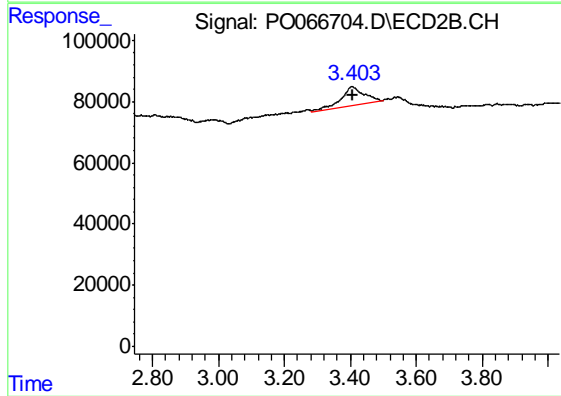




#1 Tetrachloro-m-xylene

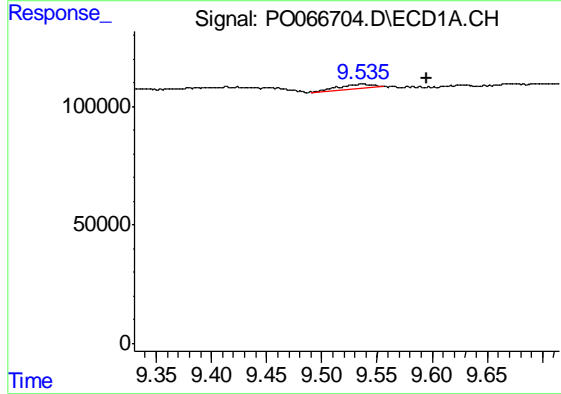
R.T.: 0.000 min  
 Exp R.T. : 4.126 min  
 Response: 0  
 Conc: N.D.

Instrument :  
 ECD\_O  
 ClientSampleId :  
 HEXANE



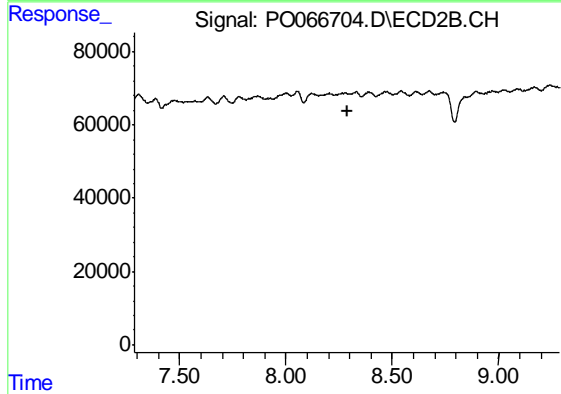
#1 Tetrachloro-m-xylene

R.T.: 3.404 min  
 Delta R.T.: -0.002 min  
 Response: 293833  
 Conc: 5.44 ng/ml



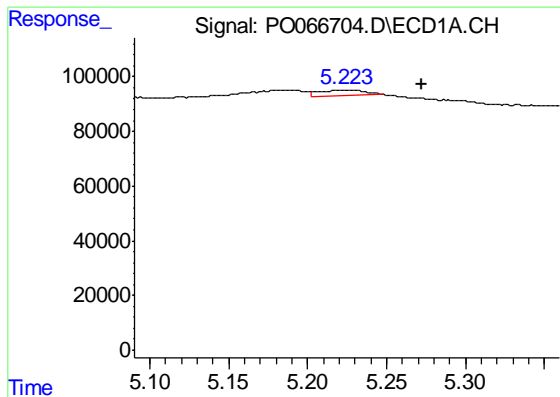
#2 Decachlorobiphenyl

R.T.: 9.536 min  
 Delta R.T.: -0.059 min  
 Response: 45288  
 Conc: 1.10 ng/ml



#2 Decachlorobiphenyl

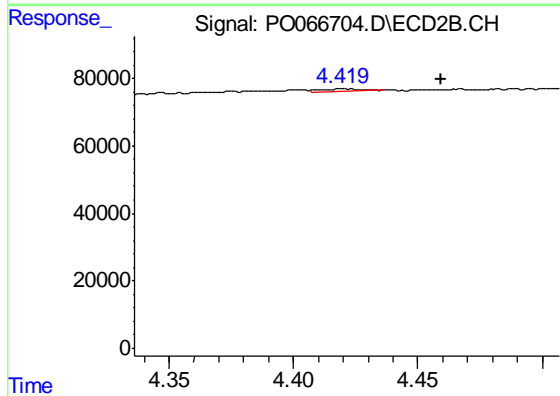
R.T.: 0.000 min  
 Exp R.T. : 8.287 min  
 Response: 0  
 Conc: N.D.



#3 AR-1016-1

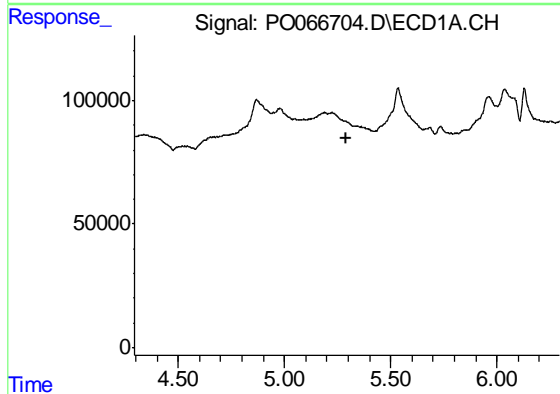
R.T.: 5.223 min  
 Delta R.T.: -0.049 min  
 Response: 49498  
 Conc: 30.63 ng/ml

Instrument :  
 ECD\_O  
 ClientSampleId :  
 HEXANE



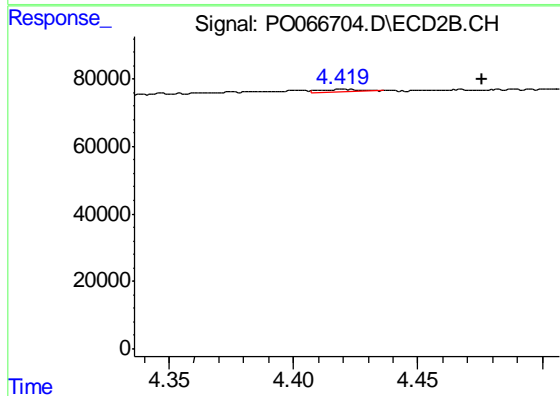
#3 AR-1016-1

R.T.: 4.420 min  
 Delta R.T.: -0.040 min  
 Response: 5991  
 Conc: 3.73 ng/ml



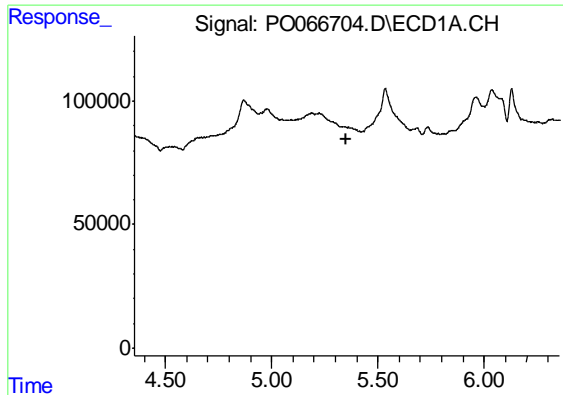
#4 AR-1016-2

R.T.: 0.000 min  
 Exp R.T. : 5.294 min  
 Response: 0  
 Conc: N.D.



#4 AR-1016-2

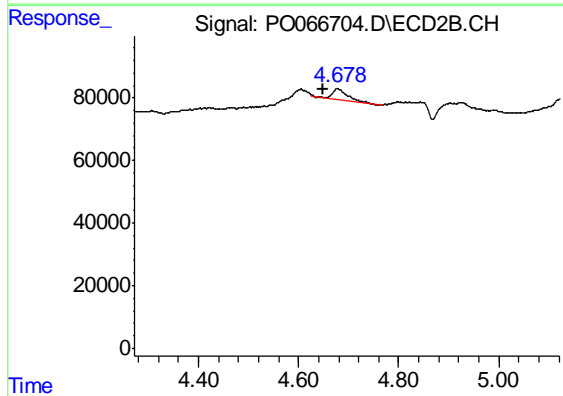
R.T.: 4.420 min  
 Delta R.T.: -0.056 min  
 Response: 5991  
 Conc: 1.63 ng/ml



#5 AR-1016-3

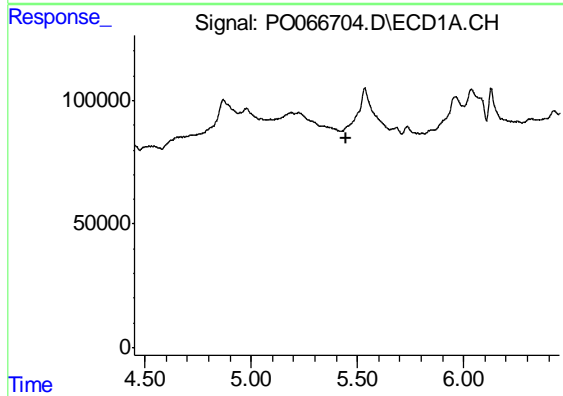
R.T.: 0.000 min  
 Exp R.T. : 5.354 min  
 Response: 0  
 Conc: N.D.

Instrument :  
 ECD\_O  
 ClientSampleId :  
 HEXANE



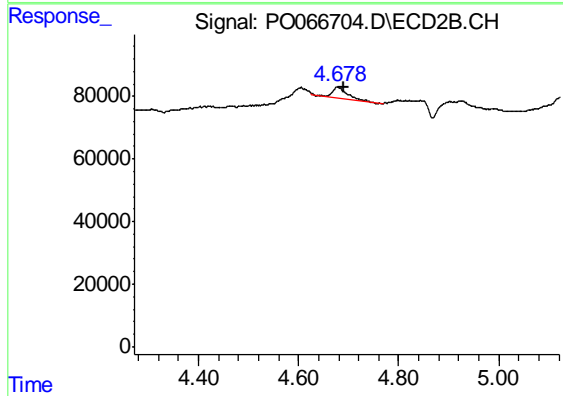
#5 AR-1016-3

R.T.: 4.677 min  
 Delta R.T.: 0.028 min  
 Response: 65052  
 Conc: 46.83 ng/ml



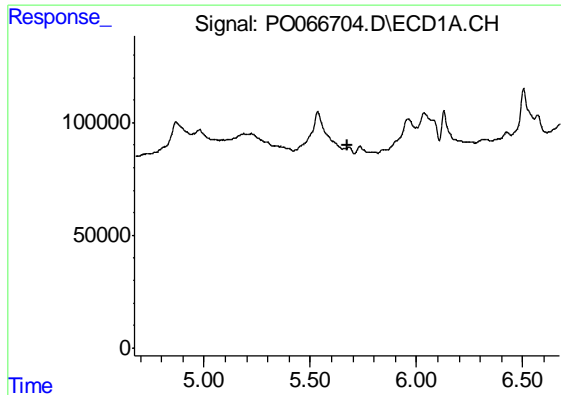
#6 AR-1016-4

R.T.: 0.000 min  
 Exp R.T. : 5.450 min  
 Response: 0  
 Conc: N.D.



#6 AR-1016-4

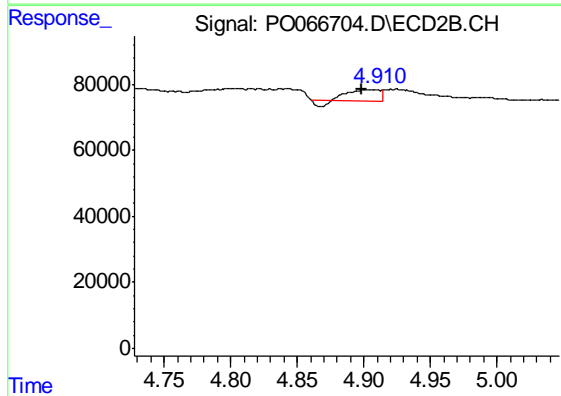
R.T.: 4.677 min  
 Delta R.T.: -0.014 min  
 Response: 65052  
 Conc: 56.29 ng/ml



#7 AR-1016-5

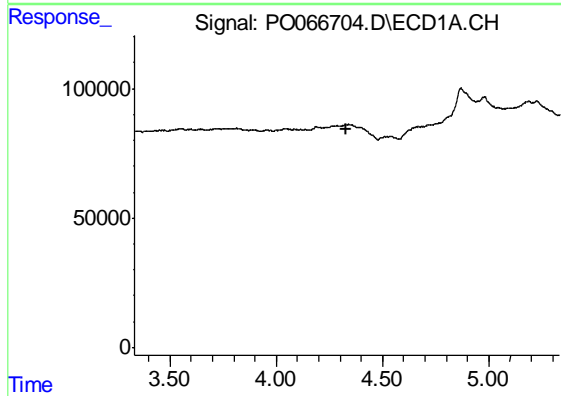
R.T.: 0.000 min  
 Exp R.T. : 5.672 min  
 Response: 0  
 Conc: N.D.

Instrument :  
 ECD\_O  
 ClientSampled :  
 HEXANE



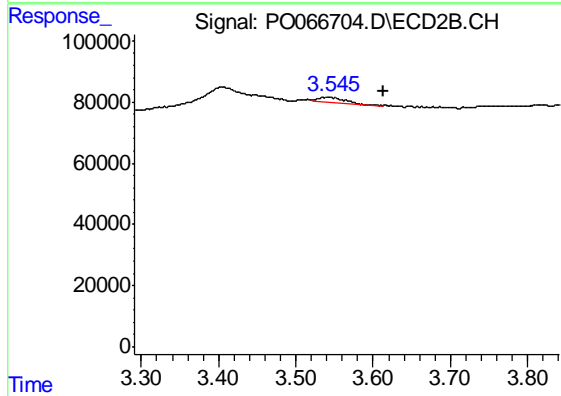
#7 AR-1016-5

R.T.: 4.902 min  
 Delta R.T.: 0.004 min  
 Response: 48422  
 Conc: 32.98 ng/ml



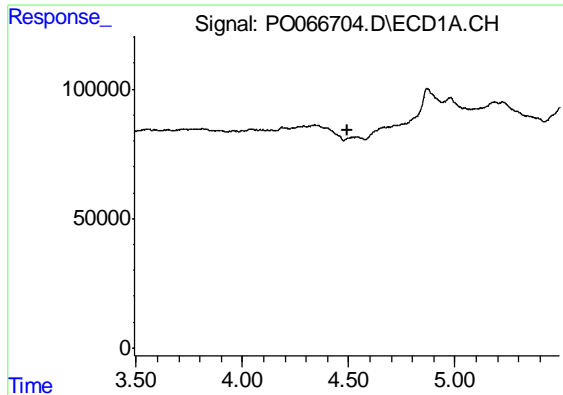
#8 AR-1221-1

R.T.: 0.000 min  
 Exp R.T. : 4.332 min  
 Response: 0  
 Conc: N.D.



#8 AR-1221-1

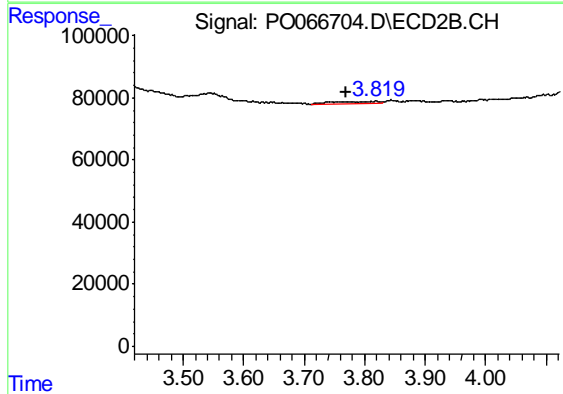
R.T.: 3.545 min  
 Delta R.T.: -0.069 min  
 Response: 32582  
 Conc: 62.73 ng/ml



#10 AR-1221-3

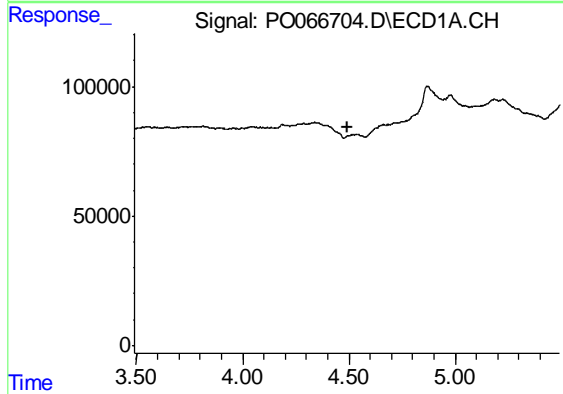
R.T.: 0.000 min  
 Exp R.T. : 4.492 min  
 Response: 0  
 Conc: N.D.

Instrument :  
 ECD\_O  
 ClientSampleId :  
 HEXANE



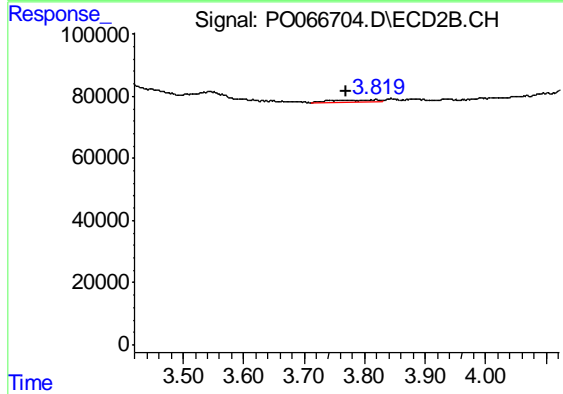
#10 AR-1221-3

R.T.: 3.819 min  
 Delta R.T.: 0.049 min  
 Response: 32466  
 Conc: 27.27 ng/ml



#11 AR-1232-1

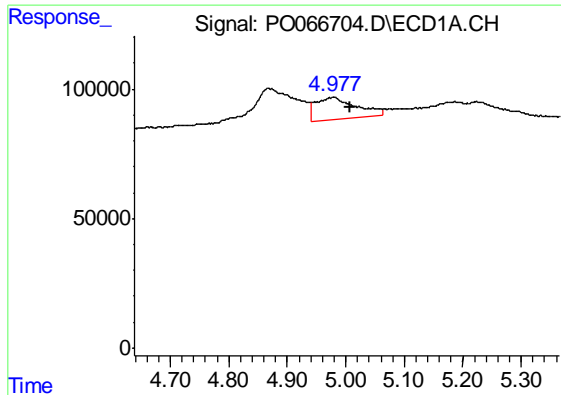
R.T.: 0.000 min  
 Exp R.T. : 4.491 min  
 Response: 0  
 Conc: N.D.



#11 AR-1232-1

R.T.: 3.819 min  
 Delta R.T.: 0.049 min  
 Response: 32466  
 Conc: 34.40 ng/ml

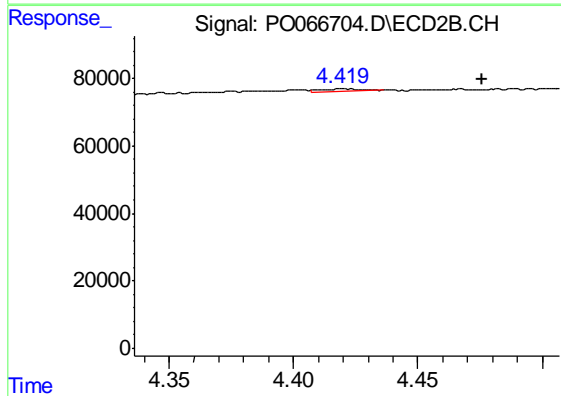




#12 AR-1232-2

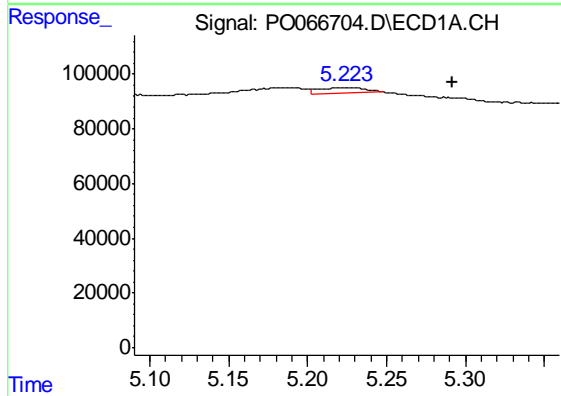
R.T.: 4.978 min  
 Delta R.T.: -0.029 min  
 Response: 400785  
 Conc: 958.18 ng/ml

Instrument :  
 ECD\_O  
 ClientSampleId :  
 HEXANE



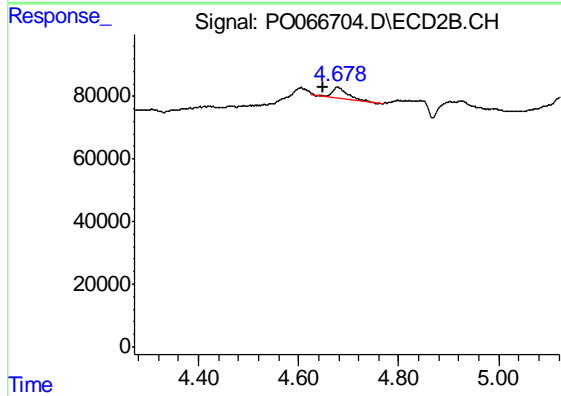
#12 AR-1232-2

R.T.: 4.420 min  
 Delta R.T.: -0.056 min  
 Response: 5991  
 Conc: 4.51 ng/ml



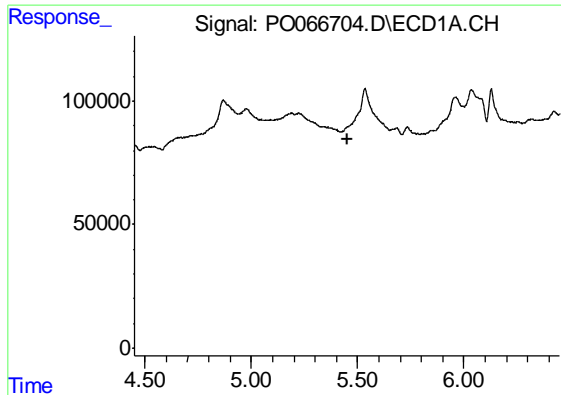
#13 AR-1232-3

R.T.: 5.223 min  
 Delta R.T.: -0.069 min  
 Response: 49498  
 Conc: 57.66 ng/ml



#13 AR-1232-3

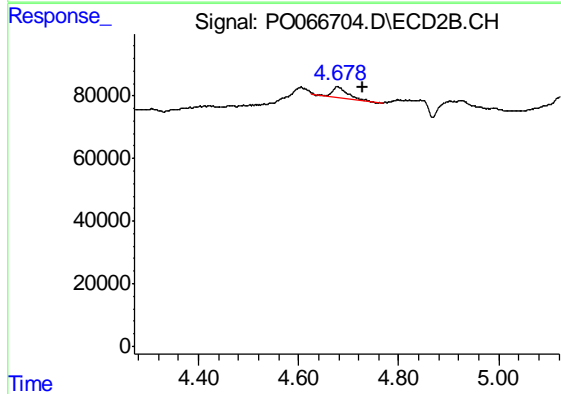
R.T.: 4.677 min  
 Delta R.T.: 0.029 min  
 Response: 65052  
 Conc: 122.95 ng/ml



#14 AR-1232-4

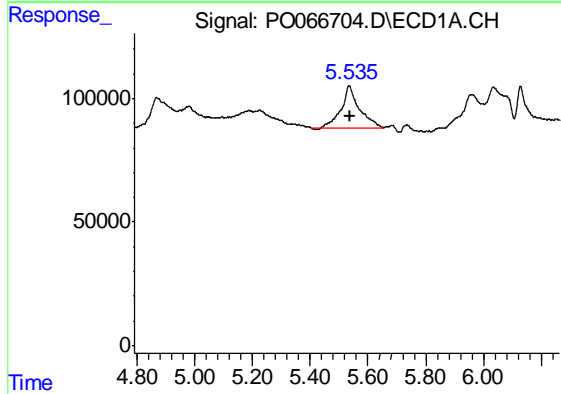
R.T.: 0.000 min  
 Exp R.T. : 5.450 min  
 Response: 0  
 Conc: N.D.

Instrument :  
 ECD\_O  
 ClientSampleId :  
 HEXANE



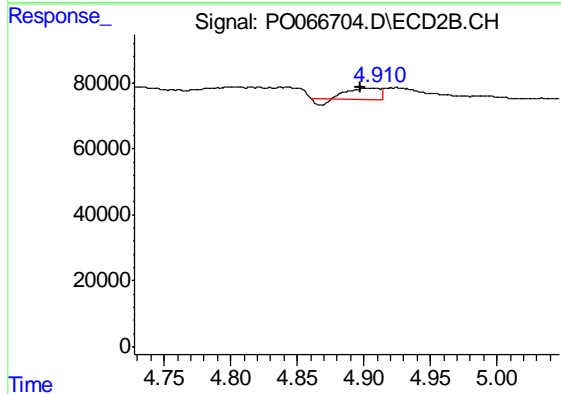
#14 AR-1232-4

R.T.: 4.677 min  
 Delta R.T.: -0.053 min  
 Response: 65052  
 Conc: 128.63 ng/ml



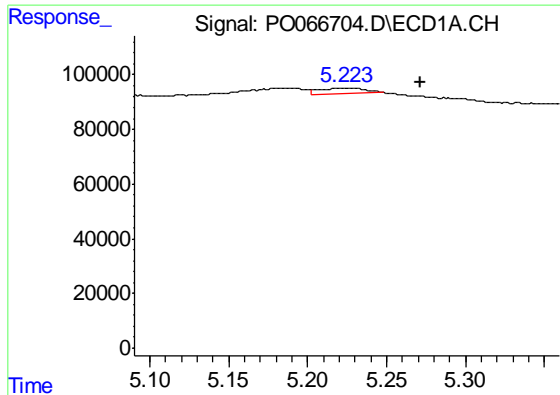
#15 AR-1232-5

R.T.: 5.534 min  
 Delta R.T.: -0.005 min  
 Response: 743272  
 Conc: 2561.40 ng/ml



#15 AR-1232-5

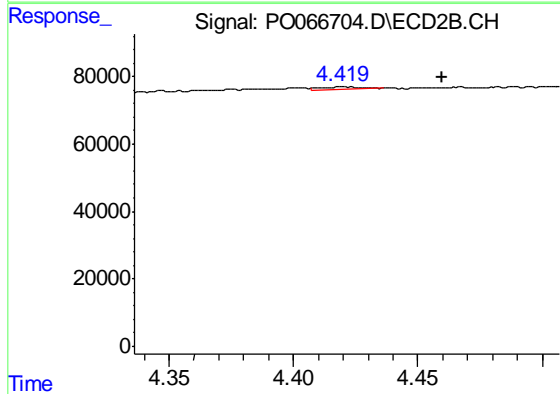
R.T.: 4.902 min  
 Delta R.T.: 0.004 min  
 Response: 48422  
 Conc: 76.11 ng/ml



#16 AR-1242-1

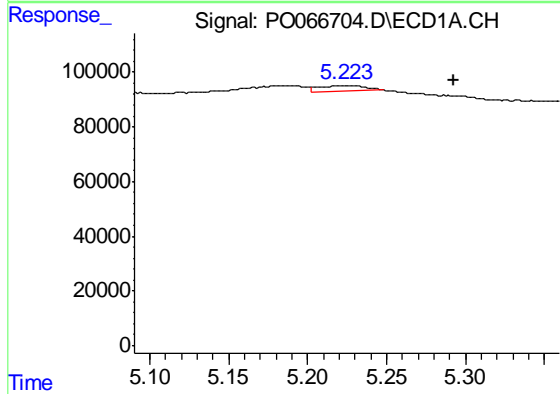
R.T.: 5.223 min  
 Delta R.T.: -0.049 min  
 Response: 49498  
 Conc: 46.12 ng/ml

Instrument :  
 ECD\_O  
 ClientSampled :  
 HEXANE



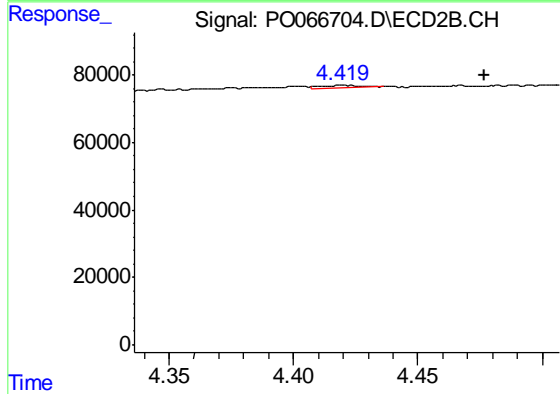
#16 AR-1242-1

R.T.: 4.420 min  
 Delta R.T.: -0.040 min  
 Response: 5991  
 Conc: 5.70 ng/ml



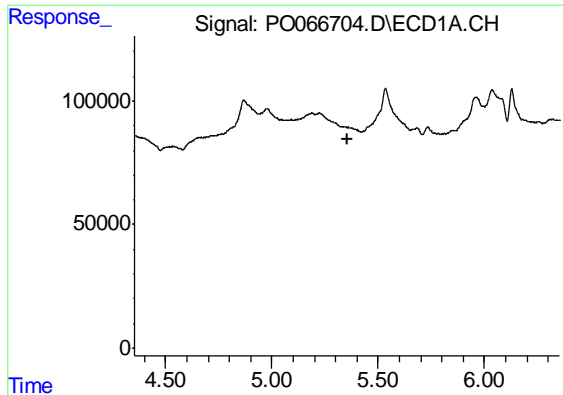
#17 AR-1242-2

R.T.: 5.223 min  
 Delta R.T.: -0.070 min  
 Response: 49498  
 Conc: 30.58 ng/ml



#17 AR-1242-2

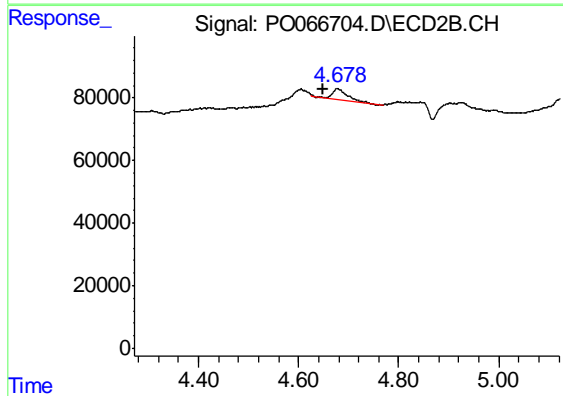
R.T.: 4.420 min  
 Delta R.T.: -0.057 min  
 Response: 5991  
 Conc: 2.52 ng/ml



#18 AR-1242-3

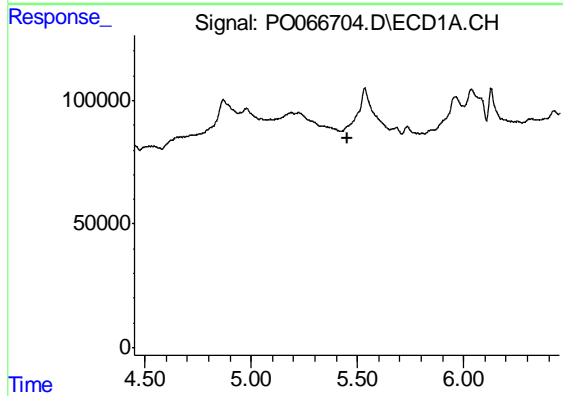
R.T.: 0.000 min  
 Exp R.T. : 5.353 min  
 Response: 0  
 Conc: N.D.

Instrument :  
 ECD\_O  
 ClientSampleId :  
 HEXANE



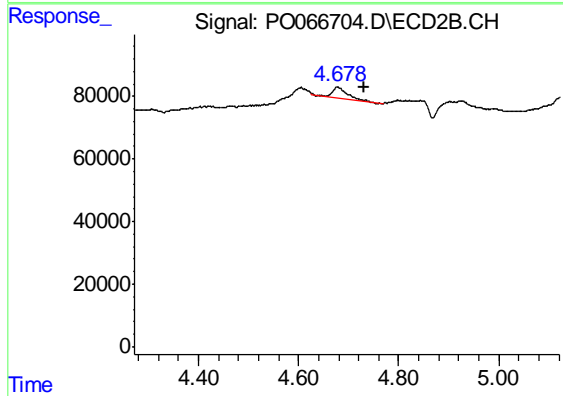
#18 AR-1242-3

R.T.: 4.677 min  
 Delta R.T.: 0.028 min  
 Response: 65052  
 Conc: 68.93 ng/ml



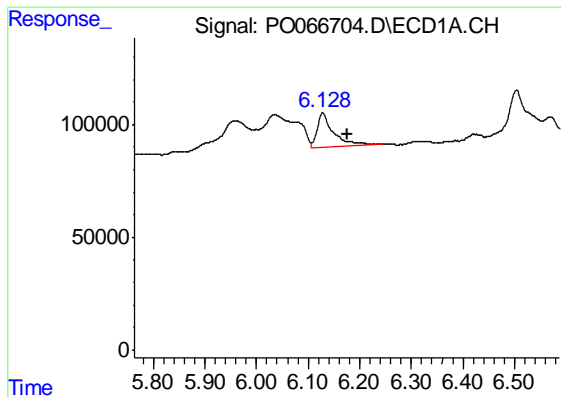
#19 AR-1242-4

R.T.: 0.000 min  
 Exp R.T. : 5.451 min  
 Response: 0  
 Conc: N.D.



#19 AR-1242-4

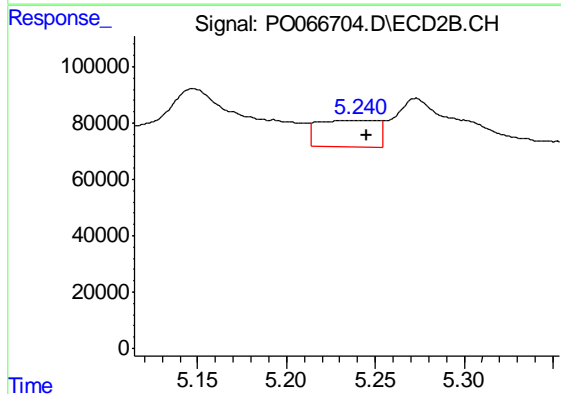
R.T.: 4.677 min  
 Delta R.T.: -0.054 min  
 Response: 65052  
 Conc: 69.31 ng/ml



#20 AR-1242-5

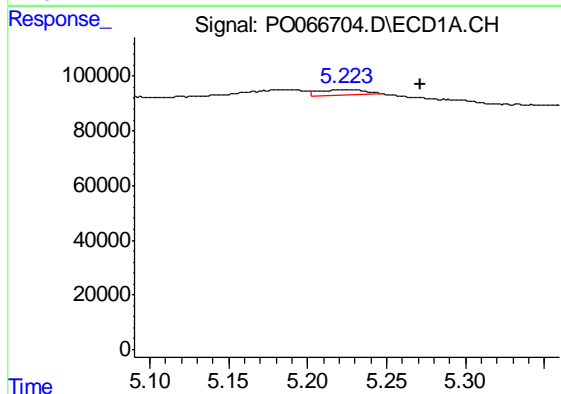
R.T.: 6.128 min  
 Delta R.T.: -0.047 min  
 Response: 338542  
 Conc: 435.44 ng/ml

Instrument :  
 ECD\_O  
 ClientSampleId :  
 HEXANE



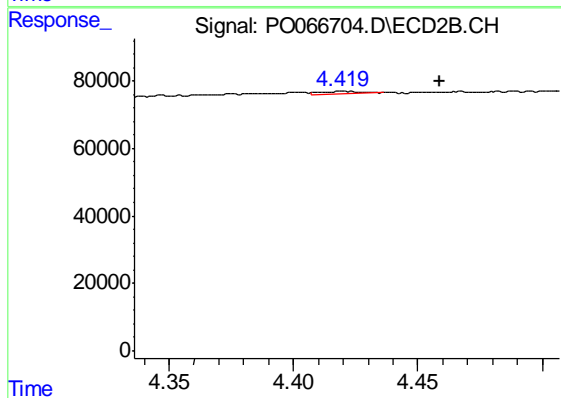
#20 AR-1242-5

R.T.: 5.232 min  
 Delta R.T.: -0.013 min  
 Response: 215690  
 Conc: 158.34 ng/ml



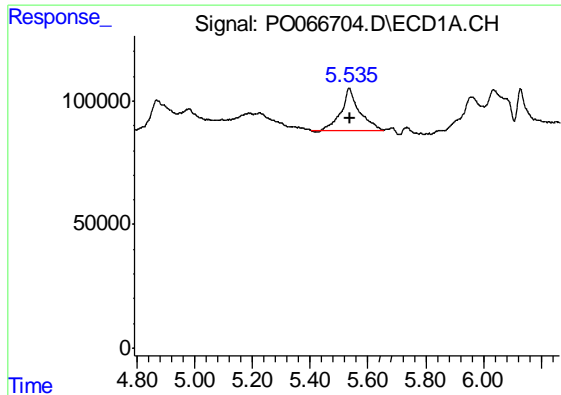
#21 AR-1248-1

R.T.: 5.223 min  
 Delta R.T.: -0.048 min  
 Response: 49498  
 Conc: 61.89 ng/ml



#21 AR-1248-1

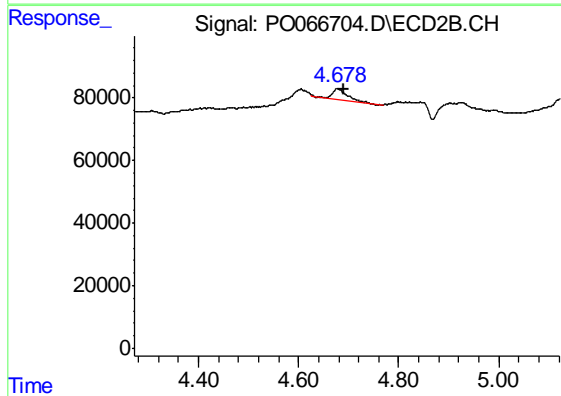
R.T.: 4.420 min  
 Delta R.T.: -0.039 min  
 Response: 5991  
 Conc: 7.24 ng/ml



#22 AR-1248-2

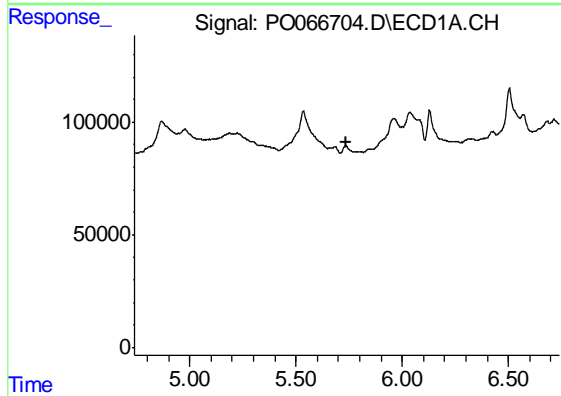
R.T.: 5.534 min  
Delta R.T.: -0.006 min  
Response: 743272  
Conc: 623.87 ng/ml

Instrument :  
ECD\_O  
ClientSampled :  
HEXANE



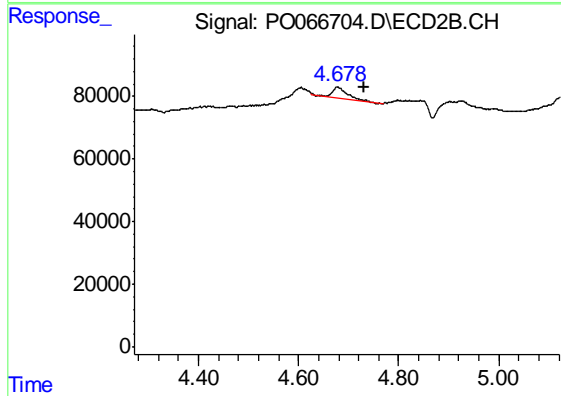
#22 AR-1248-2

R.T.: 4.677 min  
Delta R.T.: -0.013 min  
Response: 65052  
Conc: 49.25 ng/ml



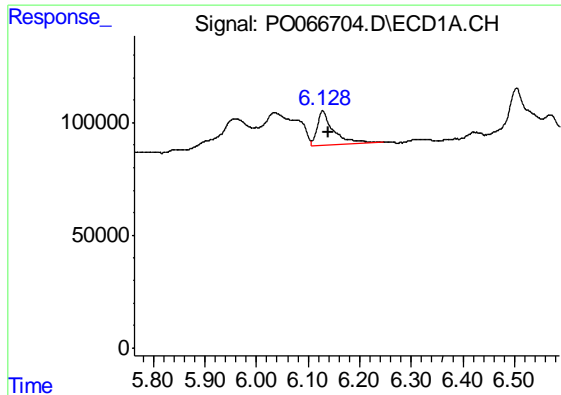
#23 AR-1248-3

R.T.: 0.000 min  
Exp R.T. : 5.740 min  
Response: 0  
Conc: N.D.



#23 AR-1248-3

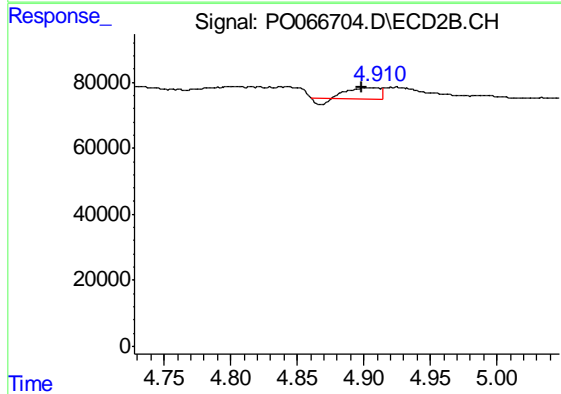
R.T.: 4.677 min  
Delta R.T.: -0.053 min  
Response: 65052  
Conc: 48.08 ng/ml



#24 AR-1248-4

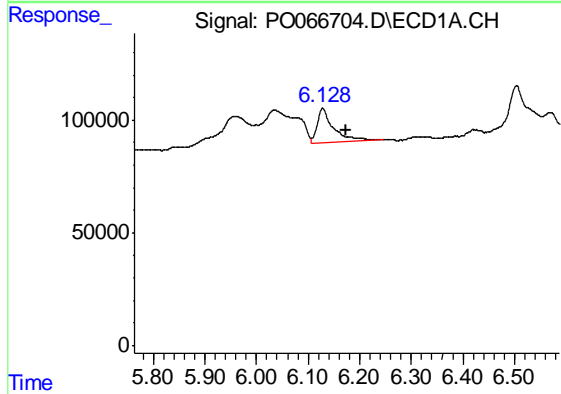
R.T.: 6.128 min  
 Delta R.T.: -0.010 min  
 Response: 338542  
 Conc: 234.81 ng/ml

Instrument :  
 ECD\_O  
 ClientSampled :  
 HEXANE



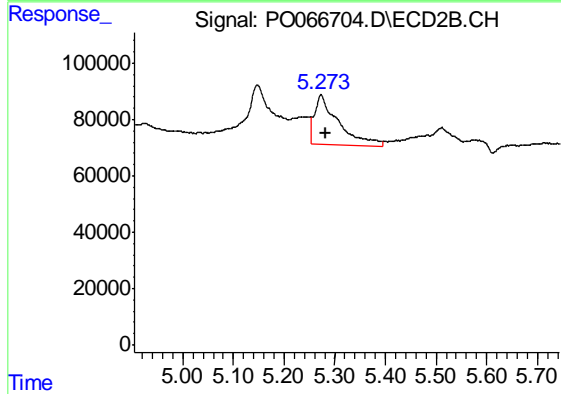
#24 AR-1248-4

R.T.: 4.902 min  
 Delta R.T.: 0.004 min  
 Response: 48422  
 Conc: 29.70 ng/ml



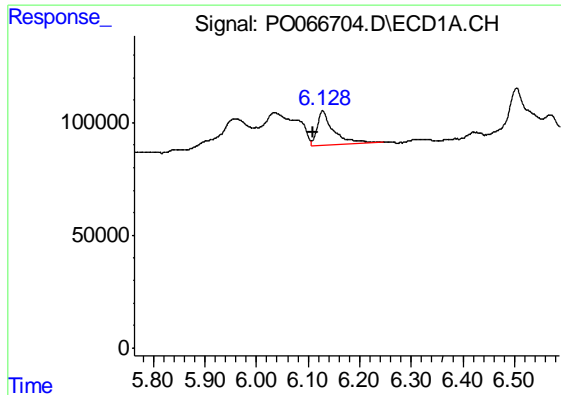
#25 AR-1248-5

R.T.: 6.128 min  
 Delta R.T.: -0.047 min  
 Response: 338542  
 Conc: 252.09 ng/ml



#25 AR-1248-5

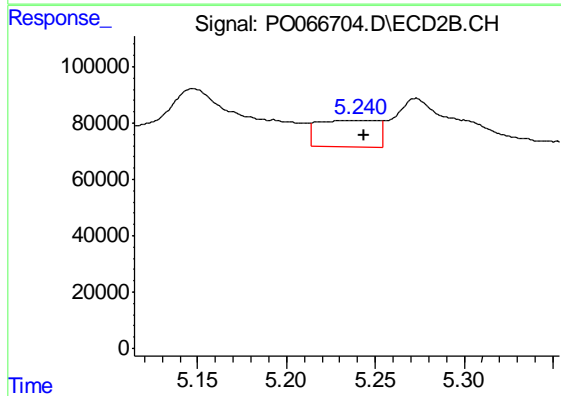
R.T.: 5.273 min  
 Delta R.T.: -0.011 min  
 Response: 575200  
 Conc: 281.13 ng/ml



#26 AR-1254-1

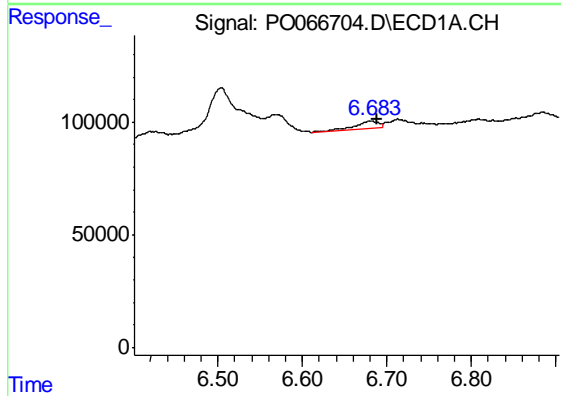
R.T.: 6.128 min  
 Delta R.T.: 0.018 min  
 Response: 338542  
 Conc: 213.58 ng/ml

Instrument :  
 ECD\_O  
 ClientSampleId :  
 HEXANE



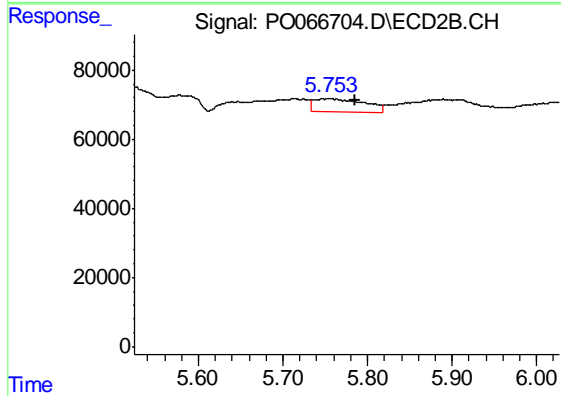
#26 AR-1254-1

R.T.: 5.232 min  
 Delta R.T.: -0.012 min  
 Response: 215690  
 Conc: 76.48 ng/ml



#28 AR-1254-3

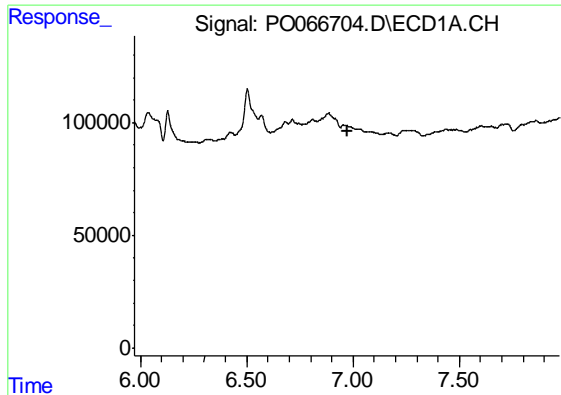
R.T.: 6.682 min  
 Delta R.T.: -0.007 min  
 Response: 69799  
 Conc: 26.40 ng/ml



#28 AR-1254-3

R.T.: 5.754 min  
 Delta R.T.: -0.032 min  
 Response: 161812  
 Conc: 41.95 ng/ml

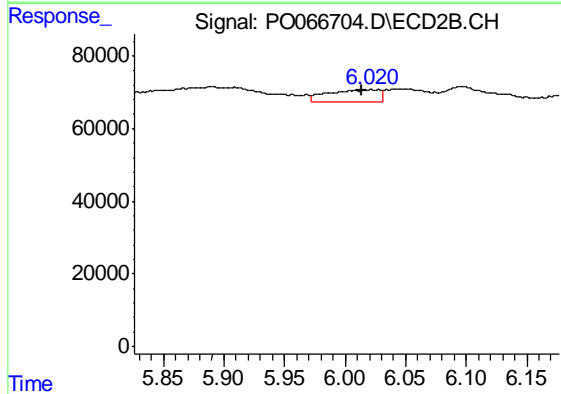




#29 AR-1254-4

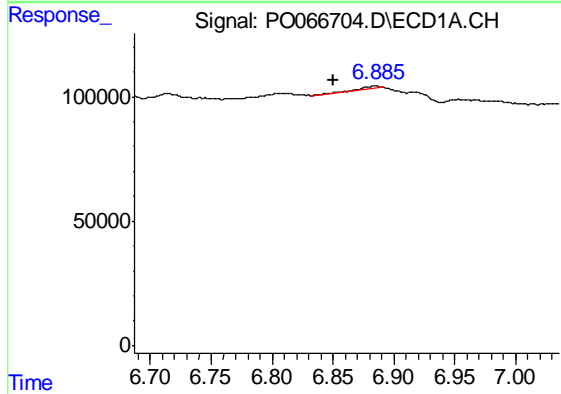
R.T.: 0.000 min  
 Exp R.T. : 6.972 min  
 Response: 0  
 Conc: N.D.

Instrument :  
 ECD\_O  
 ClientSampleId :  
 HEXANE



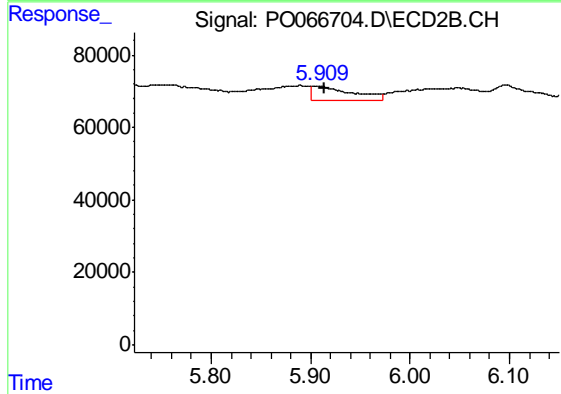
#29 AR-1254-4

R.T.: 6.021 min  
 Delta R.T.: 0.008 min  
 Response: 97956  
 Conc: 40.90 ng/ml



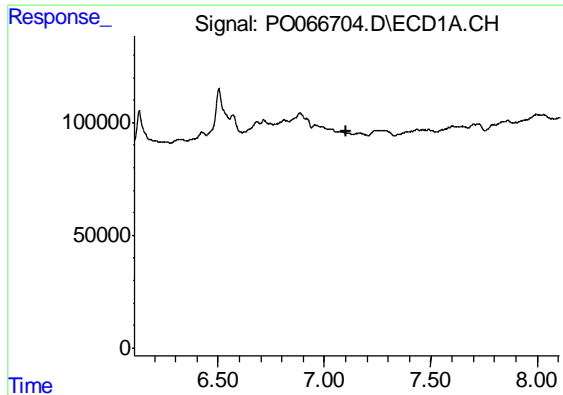
#31 AR-1260-1

R.T.: 6.885 min  
 Delta R.T.: 0.035 min  
 Response: 14689  
 Conc: 6.54 ng/ml



#31 AR-1260-1

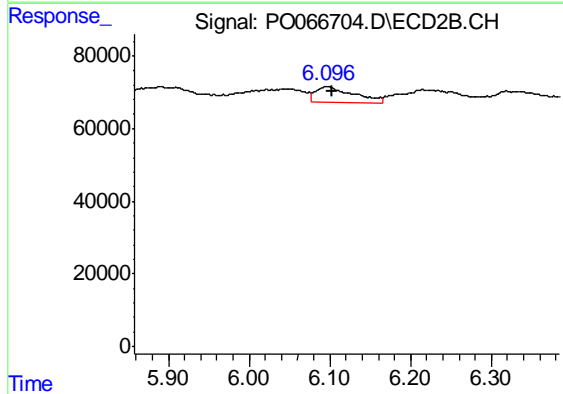
R.T.: 5.909 min  
 Delta R.T.: -0.005 min  
 Response: 108044  
 Conc: 36.26 ng/ml



#32 AR-1260-2

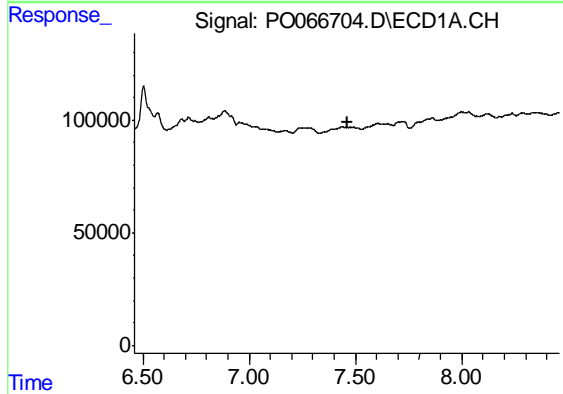
R.T.: 0.000 min  
 Exp R.T. : 7.106 min  
 Response: 0  
 Conc: N.D.

Instrument :  
 ECD\_O  
 ClientSampleId :  
 HEXANE



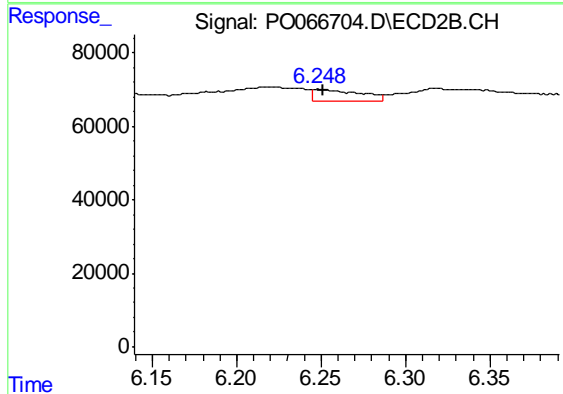
#32 AR-1260-2

R.T.: 6.097 min  
 Delta R.T.: -0.006 min  
 Response: 144288  
 Conc: 36.42 ng/ml



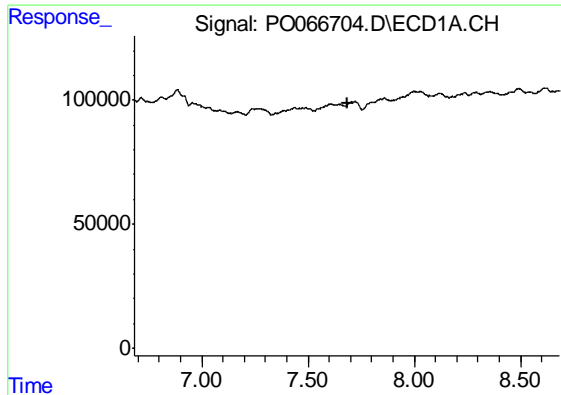
#33 AR-1260-3

R.T.: 0.000 min  
 Exp R.T. : 7.460 min  
 Response: 0  
 Conc: N.D.



#33 AR-1260-3

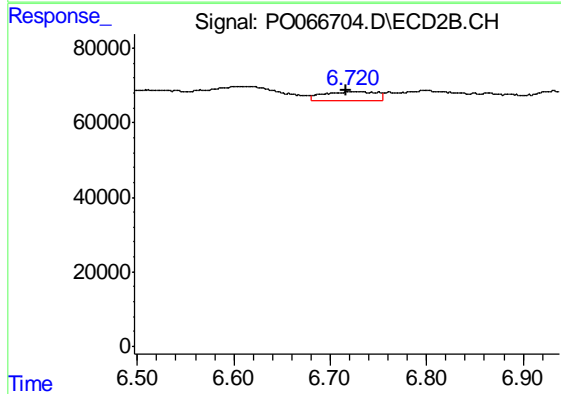
R.T.: 6.248 min  
 Delta R.T.: -0.003 min  
 Response: 63075  
 Conc: 17.91 ng/ml



#34 AR-1260-4

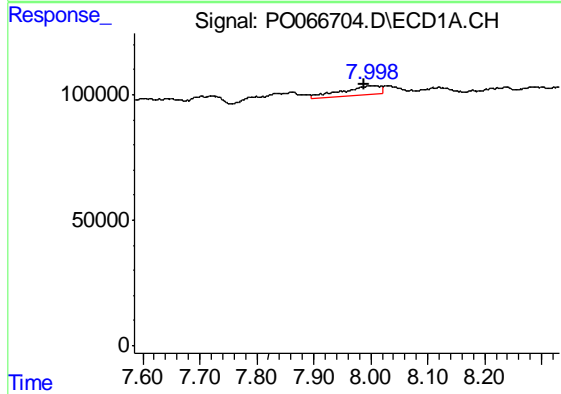
R.T.: 0.000 min  
 Exp R.T. : 7.683 min  
 Response: 0  
 Conc: N.D.

Instrument :  
 ECD\_O  
 ClientSampleId :  
 HEXANE



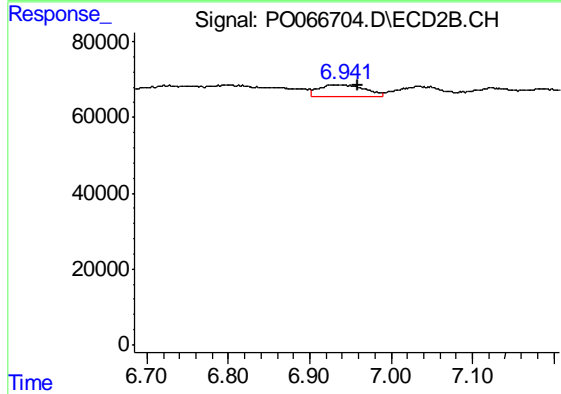
#34 AR-1260-4

R.T.: 6.721 min  
 Delta R.T.: 0.004 min  
 Response: 94880  
 Conc: 32.40 ng/ml



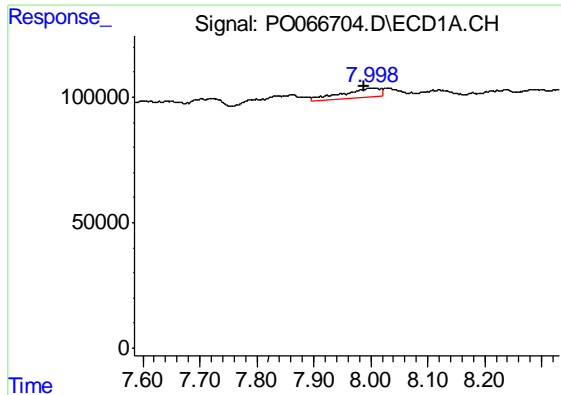
#35 AR-1260-5

R.T.: 7.998 min  
 Delta R.T.: 0.009 min  
 Response: 164764  
 Conc: 26.64 ng/ml



#35 AR-1260-5

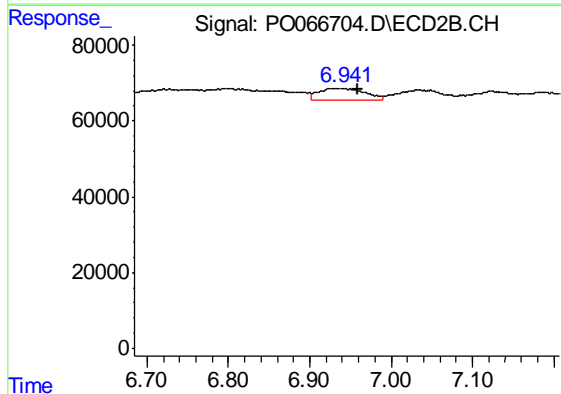
R.T.: 6.943 min  
 Delta R.T.: -0.017 min  
 Response: 124124  
 Conc: 16.41 ng/ml



#37 AR-1262-2

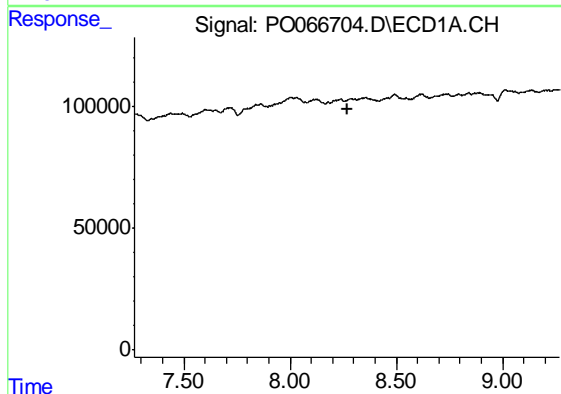
R.T.: 7.998 min  
 Delta R.T.: 0.011 min  
 Response: 164764  
 Conc: 26.25 ng/ml

Instrument :  
 ECD\_O  
 ClientSampleId :  
 HEXANE



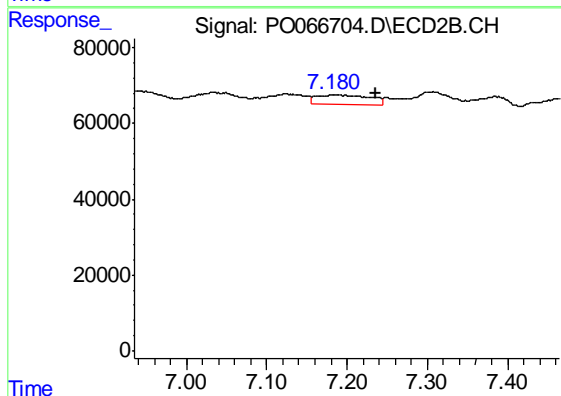
#37 AR-1262-2

R.T.: 6.943 min  
 Delta R.T.: -0.016 min  
 Response: 124124  
 Conc: 15.54 ng/ml



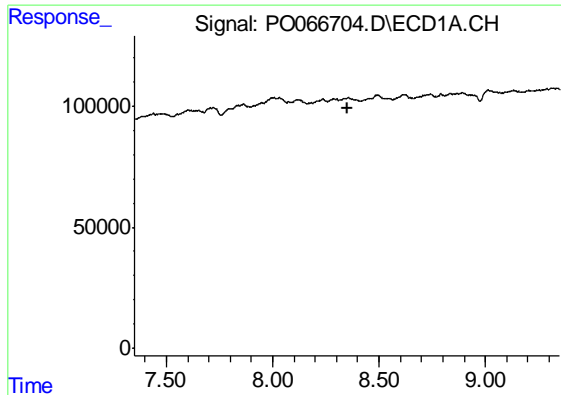
#38 AR-1262-3

R.T.: 0.000 min  
 Exp R.T. : 8.268 min  
 Response: 0  
 Conc: N.D.



#38 AR-1262-3

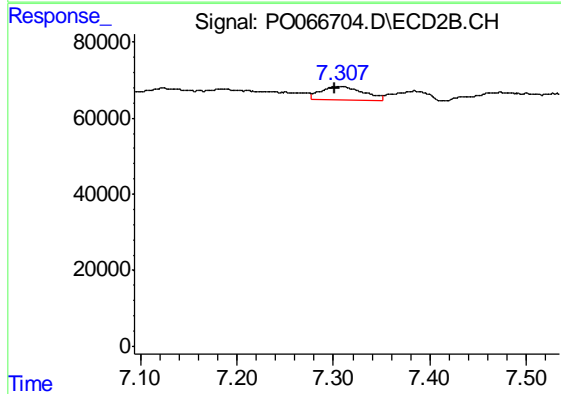
R.T.: 7.181 min  
 Delta R.T.: -0.055 min  
 Response: 119867  
 Conc: 36.86 ng/ml



#39 AR-1262-4

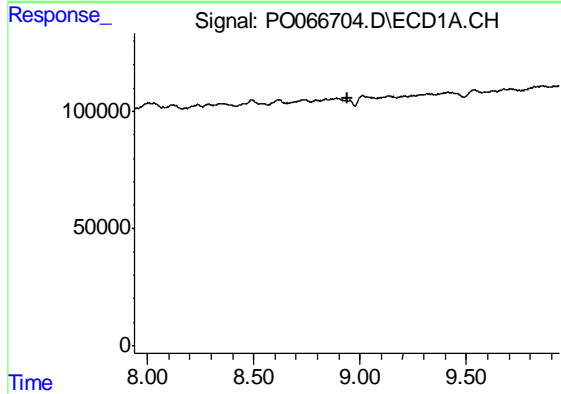
R.T.: 0.000 min  
 Exp R.T. : 8.349 min  
 Response: 0  
 Conc: N.D.

Instrument :  
 ECD\_O  
 ClientSampleId :  
 HEXANE



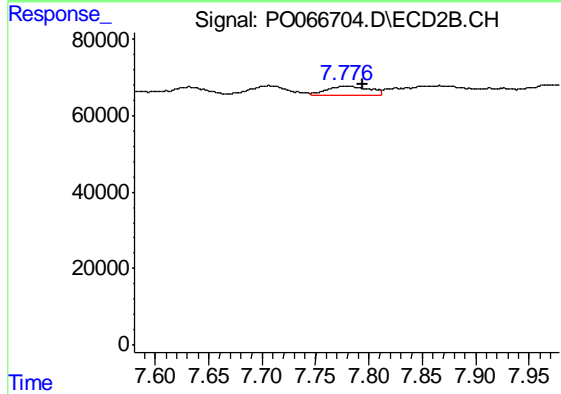
#39 AR-1262-4

R.T.: 7.308 min  
 Delta R.T.: 0.006 min  
 Response: 111542  
 Conc: 19.41 ng/ml



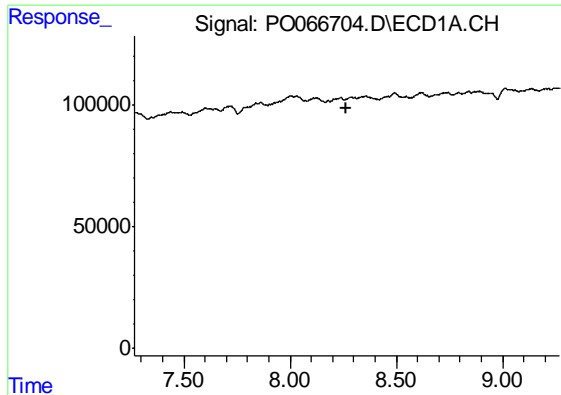
#40 AR-1262-5

R.T.: 0.000 min  
 Exp R.T. : 8.939 min  
 Response: 0  
 Conc: N.D.



#40 AR-1262-5

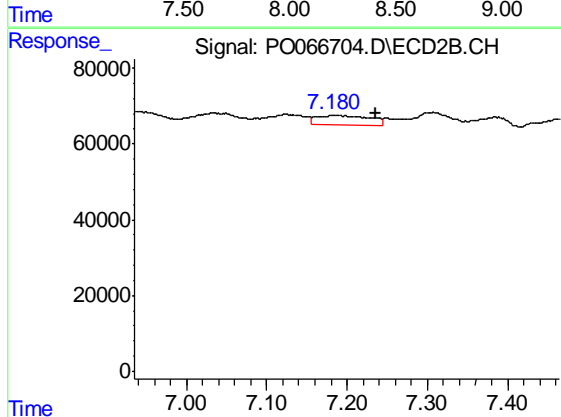
R.T.: 7.776 min  
 Delta R.T.: -0.017 min  
 Response: 67735  
 Conc: 27.03 ng/ml



#41 AR-1268-1

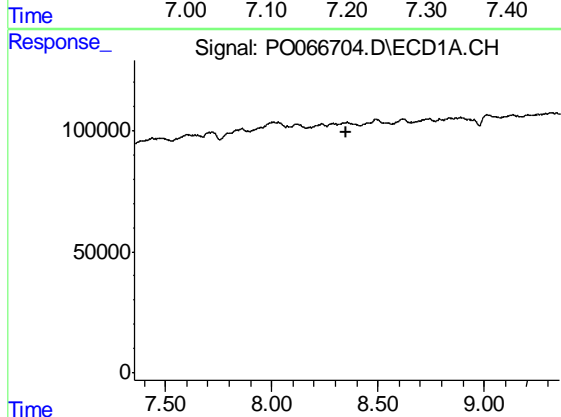
R.T.: 0.000 min  
 Exp R.T. : 8.267 min  
 Response: 0  
 Conc: N.D.

Instrument :  
 ECD\_O  
 ClientSampleId :  
 HEXANE



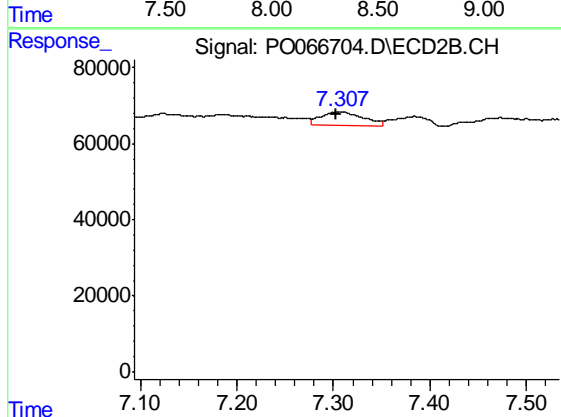
#41 AR-1268-1

R.T.: 7.181 min  
 Delta R.T.: -0.056 min  
 Response: 119867  
 Conc: 12.29 ng/ml



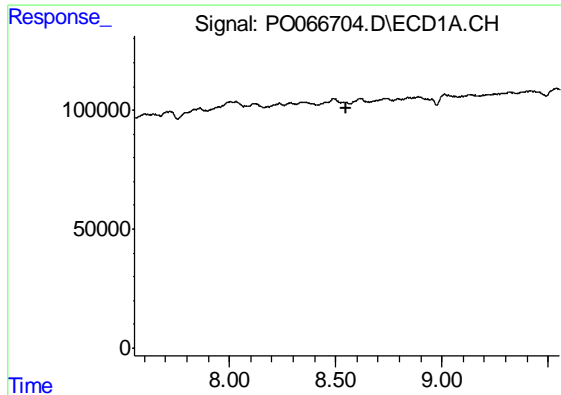
#42 AR-1268-2

R.T.: 0.000 min  
 Exp R.T. : 8.354 min  
 Response: 0  
 Conc: N.D.



#42 AR-1268-2

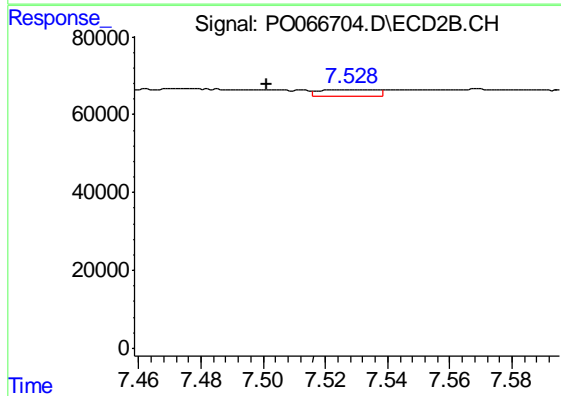
R.T.: 7.308 min  
 Delta R.T.: 0.005 min  
 Response: 111542  
 Conc: 12.27 ng/ml



#43 AR-1268-3

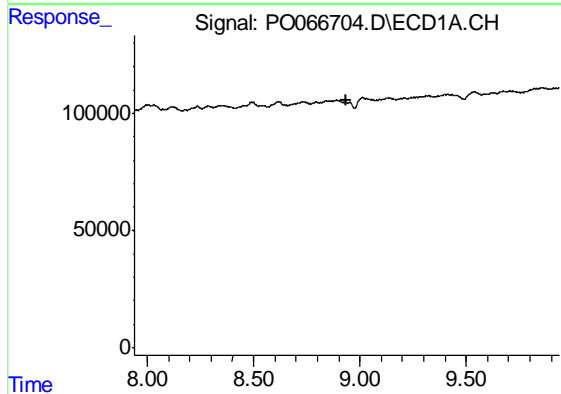
R.T.: 0.000 min  
 Exp R.T. : 8.553 min  
 Response: 0  
 Conc: N.D.

Instrument :  
 ECD\_O  
 ClientSampleId :  
 HEXANE



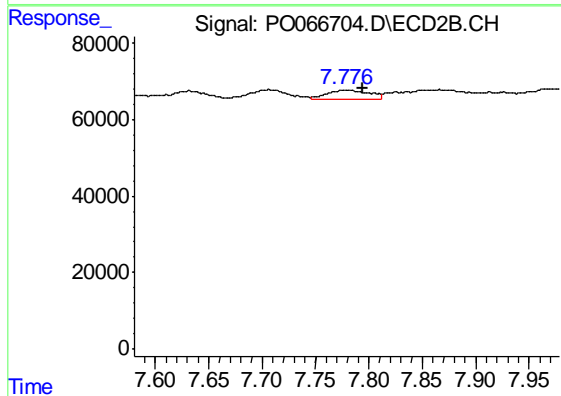
#43 AR-1268-3

R.T.: 7.529 min  
 Delta R.T.: 0.027 min  
 Response: 21878  
 Conc: 2.85 ng/ml



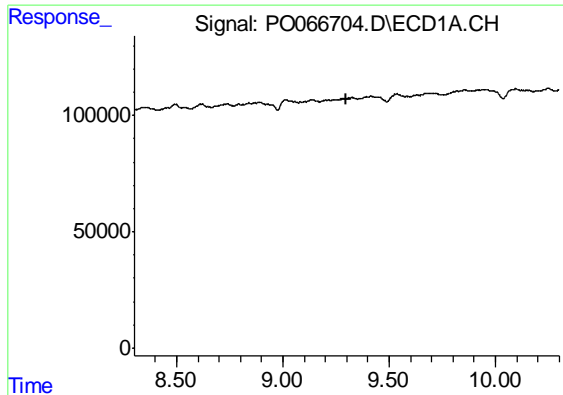
#44 AR-1268-4

R.T.: 0.000 min  
 Exp R.T. : 8.939 min  
 Response: 0  
 Conc: N.D.



#44 AR-1268-4

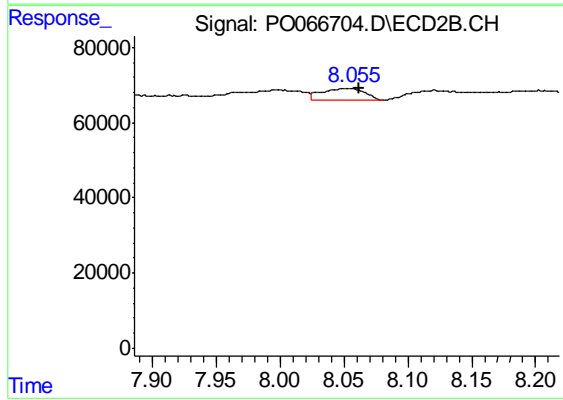
R.T.: 7.776 min  
 Delta R.T.: -0.018 min  
 Response: 67735  
 Conc: 22.88 ng/ml



#45 AR-1268-5

R.T.: 0.000 min  
Exp R.T. : 9.301 min  
Response: 0  
Conc: N.D.

Instrument :  
ECD\_O  
ClientSampleId :  
HEXANE



#45 AR-1268-5

R.T.: 8.055 min  
Delta R.T.: -0.007 min  
Response: 71515  
Conc: 3.30 ng/ml