

Data Path : Z:\pestpcbsrv\HPCHEM1\ECD_O\Data\P0022120\
 Data File : P0066707.D
 Signal(s) : Signal #1: ECD1A.CH Signal #2: ECD2B.CH
 Acq On : 21 Feb 2020 11:02
 Operator : DD\AJ
 Sample : AR1660ICC750
 Misc :
 ALS Vial : 4 Sample Multiplier: 1

Instrument :
 ECD_O
 ClientSampleId :
 AR1660ICC750

Integration File signal 1: autoint1.e
 Integration File signal 2: autoint2.e
 Quant Time: Feb 21 12:39:04 2020
 Quant Method : Z:\pestpcbsrv\HPCHEM1\ECD_O\methods\P0022120.M
 Quant Title : GC EXTRACTABLES
 QLast Update : Fri Feb 21 12:38:04 2020
 Response via : Initial Calibration
 Integrator: ChemStation 6890 Scale Mode: Small noise peaks clipped

Volume Inj. : 2 µl
 Signal #1 Phase : ZB-MR1 Signal #2 Phase: ZB-MR2
 Signal #1 Info : 30Mx0.32mmx 0.50µ Signal #2 Info : 30M x 0.32mm x 0.25µm

Compound	RT#1	RT#2	Resp#1	Resp#2	ng/ml	ng/ml

System Monitoring Compounds						
1) SA Tetrachlo...	4.127	3.407	3249455	4053822	77.870	77.082
2) SA Decachlor...	9.599	8.289	3068678	4065508	75.584	76.171
Target Compounds						
3) L1 AR-1016-1	5.274	4.460	1190207	1157652	760.576	746.994
4) L1 AR-1016-2	5.295	4.476	1796526	2568278	753.737	751.832
5) L1 AR-1016-3	5.356	4.649	1013411	1008034	746.798	750.751
6) L1 AR-1016-4	5.453	4.691	942092	849592	754.228	744.668
7) L1 AR-1016-5	5.743	4.899	797833	1085804	732.331	748.573
31) L7 AR-1260-1	6.853	5.914	1668046	2126866	762.104	746.774
32) L7 AR-1260-2	7.108	6.103	2494658	2828204	763.925	755.746
33) L7 AR-1260-3	7.463	6.252	2093324	2498064	761.068	760.716
34) L7 AR-1260-4	7.687	6.718	1934255	2102773	771.331	763.103
35) L7 AR-1260-5	7.992	6.961	4573641	5604769	784.593	781.201

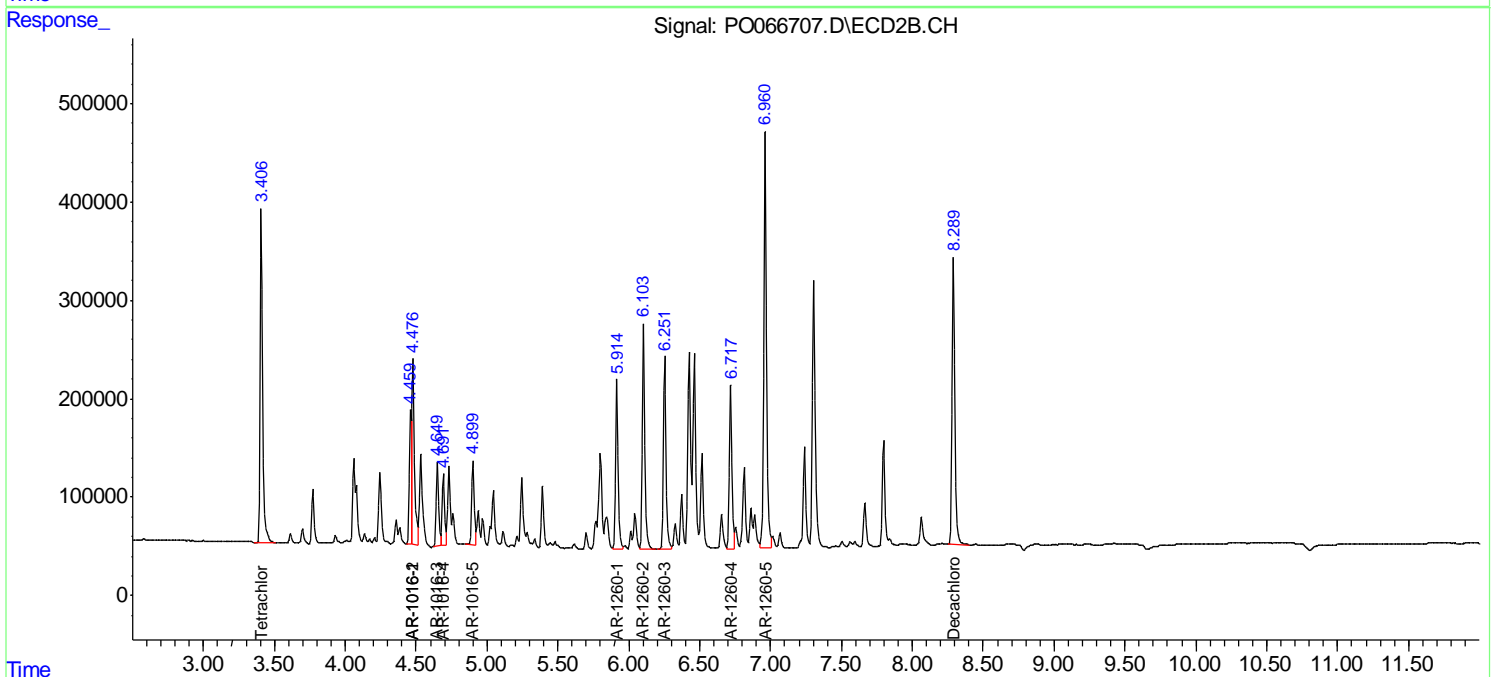
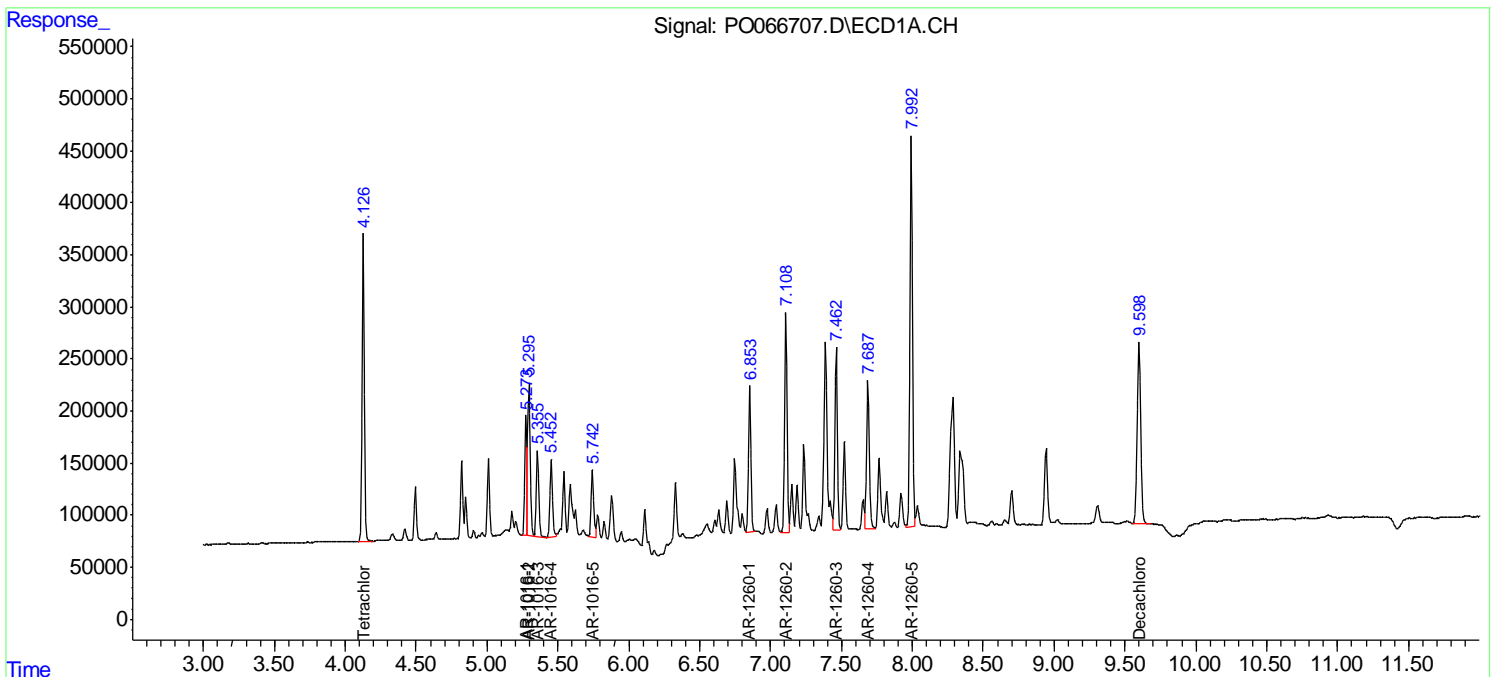
(f)=RT Delta > 1/2 Window (#)=Amounts differ by > 25% (m)=manual int.

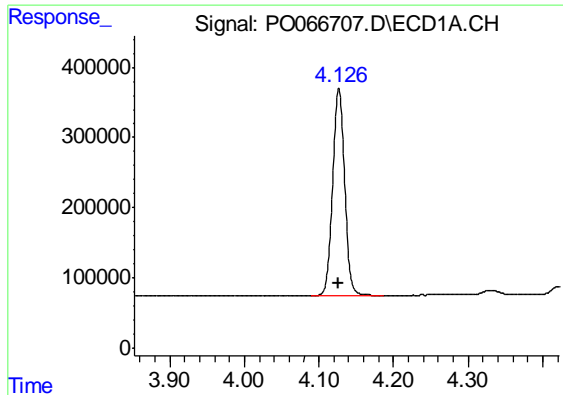
Data Path : Z:\pestpcbsrv\HPCHEM1\ECD_O\Data\PO022120\
 Data File : PO066707.D
 Signal(s) : Signal #1: ECD1A.CH Signal #2: ECD2B.CH
 Acq On : 21 Feb 2020 11:02
 Operator : DD\AJ
 Sample : AR1660ICC750
 Misc :
 ALS Vial : 4 Sample Multiplier: 1

Instrument :
 ECD_O
 ClientSampled :
 AR1660ICC750

Integration File signal 1: autoint1.e
 Integration File signal 2: autoint2.e
 Quant Time: Feb 21 12:39:04 2020
 Quant Method : Z:\pestpcbsrv\HPCHEM1\ECD_O\methods\PO022120.M
 Quant Title : GC EXTRACTABLES
 QLast Update : Fri Feb 21 12:38:04 2020
 Response via : Initial Calibration
 Integrator: ChemStation 6890 Scale Mode: Small noise peaks clipped

Volume Inj. : 2 µl
 Signal #1 Phase : ZB-MR1 Signal #2 Phase: ZB-MR2
 Signal #1 Info : 30Mx0.32mmx 0.50µ Signal #2 Info : 30M x 0.32mm x 0.25µm

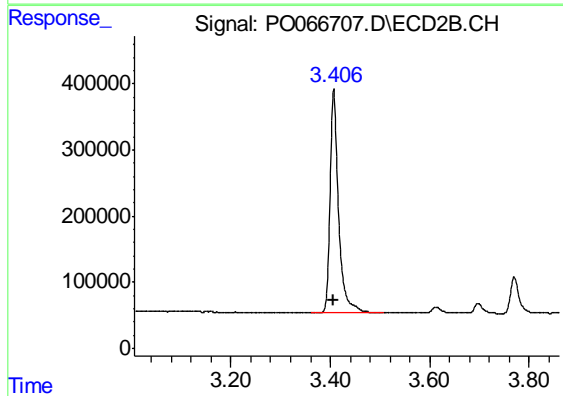




#1 Tetrachloro-m-xylene

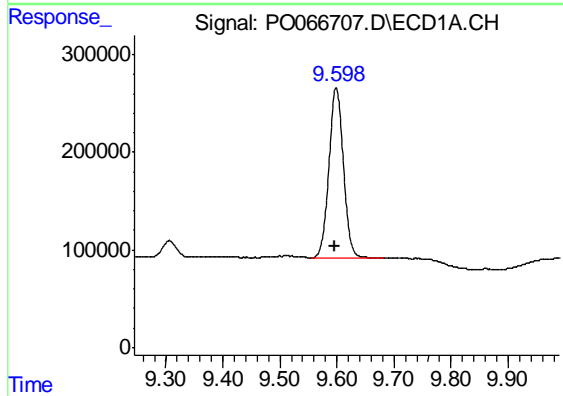
R.T.: 4.127 min
 Delta R.T.: 0.000 min
 Response: 3249455
 Conc: 77.87 ng/ml

Instrument :
 ECD_O
 ClientSampleId :
 AR1660ICC750



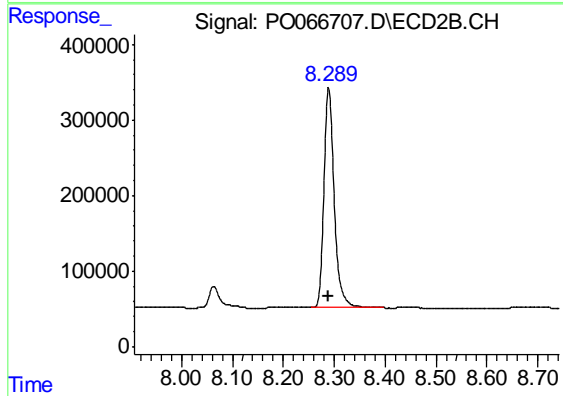
#1 Tetrachloro-m-xylene

R.T.: 3.407 min
 Delta R.T.: 0.000 min
 Response: 4053822
 Conc: 77.08 ng/ml



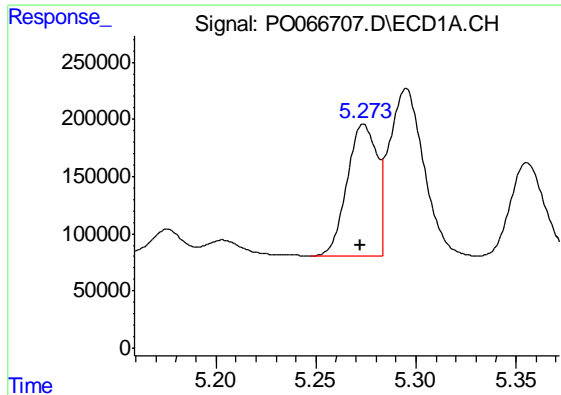
#2 Decachlorobiphenyl

R.T.: 9.599 min
 Delta R.T.: 0.003 min
 Response: 3068678
 Conc: 75.58 ng/ml



#2 Decachlorobiphenyl

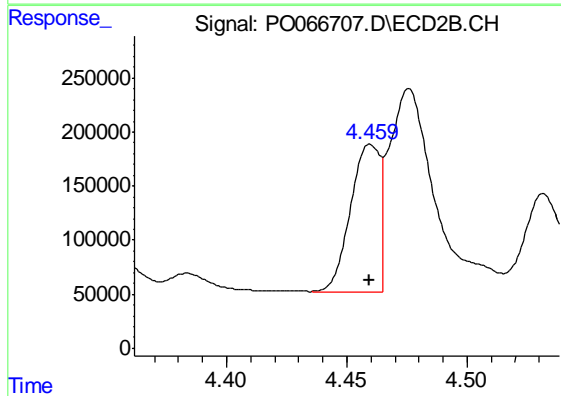
R.T.: 8.289 min
 Delta R.T.: 0.001 min
 Response: 4065508
 Conc: 76.17 ng/ml



#3 AR-1016-1

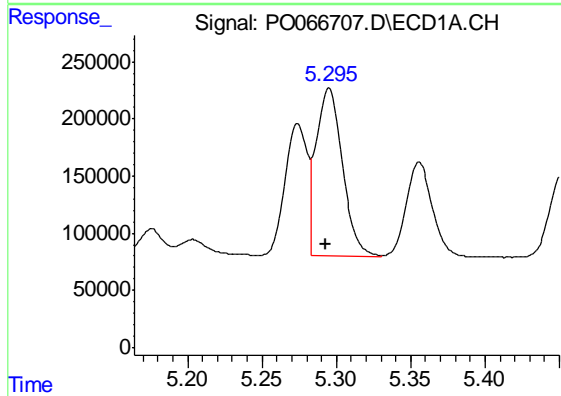
R.T.: 5.274 min
 Delta R.T.: 0.002 min
 Response: 1190207
 Conc: 760.58 ng/ml

Instrument :
 ECD_O
 ClientSampleId :
 AR1660ICC750



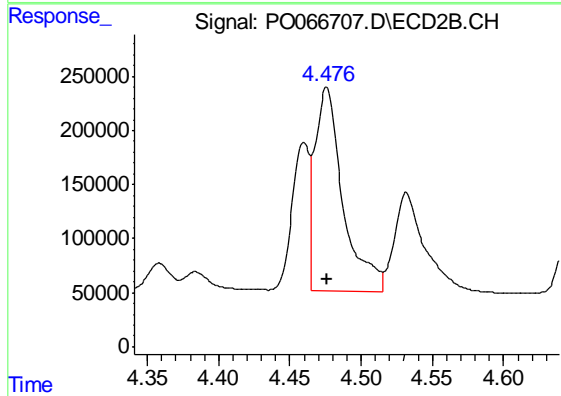
#3 AR-1016-1

R.T.: 4.460 min
 Delta R.T.: 0.000 min
 Response: 1157652
 Conc: 746.99 ng/ml



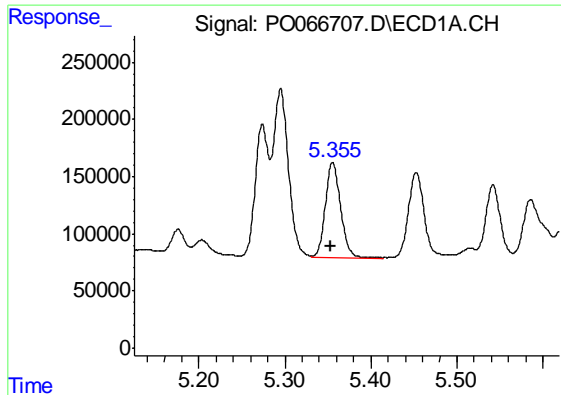
#4 AR-1016-2

R.T.: 5.295 min
 Delta R.T.: 0.002 min
 Response: 1796526
 Conc: 753.74 ng/ml



#4 AR-1016-2

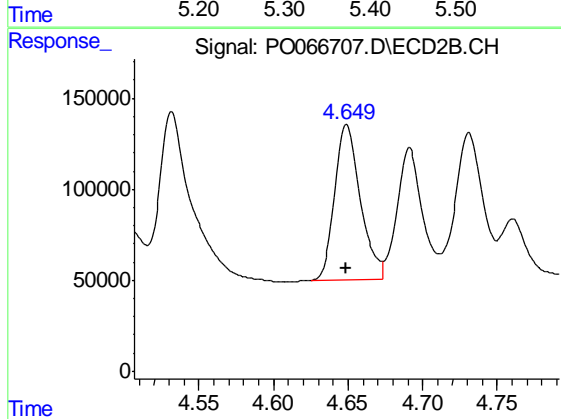
R.T.: 4.476 min
 Delta R.T.: 0.000 min
 Response: 2568278
 Conc: 751.83 ng/ml



#5 AR-1016-3

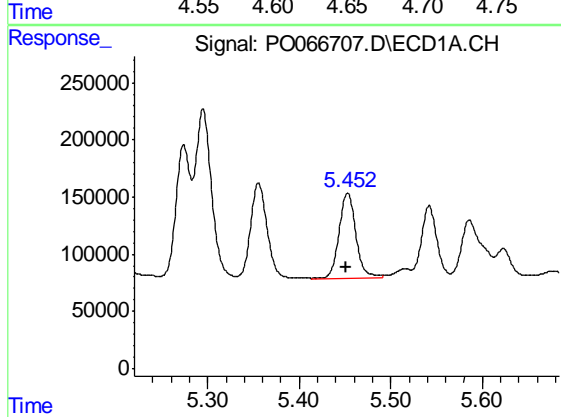
R.T.: 5.356 min
Delta R.T.: 0.002 min
Response: 1013411
Conc: 746.80 ng/ml

Instrument :
ECD_O
ClientSampleId :
AR1660ICC750



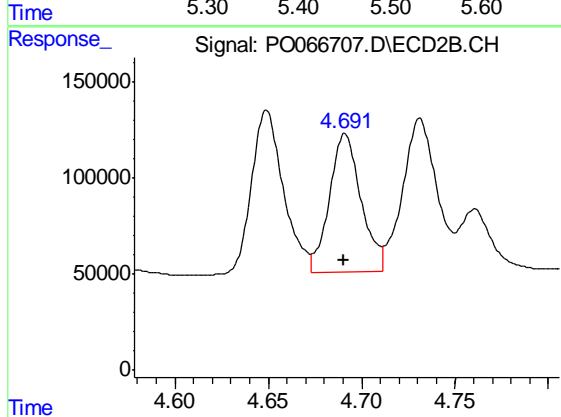
#5 AR-1016-3

R.T.: 4.649 min
Delta R.T.: 0.000 min
Response: 1008034
Conc: 750.75 ng/ml



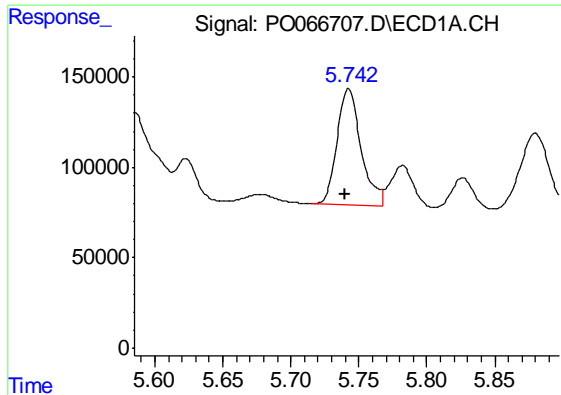
#6 AR-1016-4

R.T.: 5.453 min
Delta R.T.: 0.001 min
Response: 942092
Conc: 754.23 ng/ml



#6 AR-1016-4

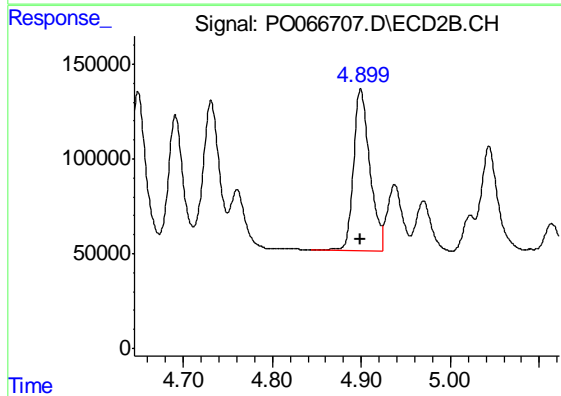
R.T.: 4.691 min
Delta R.T.: 0.000 min
Response: 849592
Conc: 744.67 ng/ml



#7 AR-1016-5

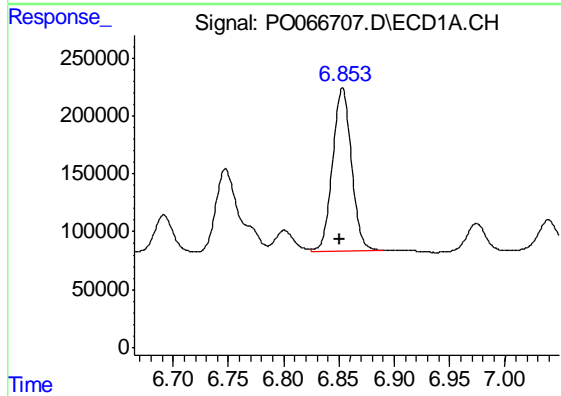
R.T.: 5.743 min
 Delta R.T.: 0.003 min
 Response: 797833
 Conc: 732.33 ng/ml

Instrument :
 ECD_O
 ClientSampleId :
 AR1660ICC750



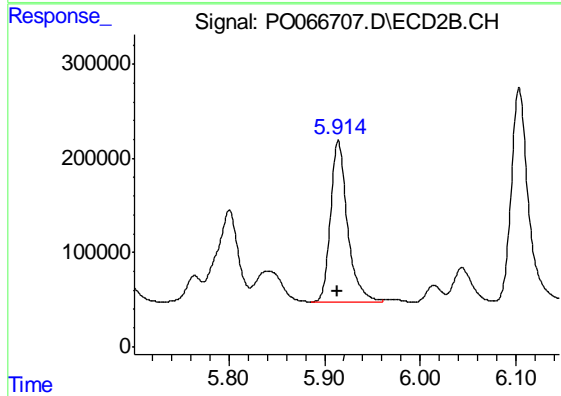
#7 AR-1016-5

R.T.: 4.899 min
 Delta R.T.: 0.000 min
 Response: 1085804
 Conc: 748.57 ng/ml



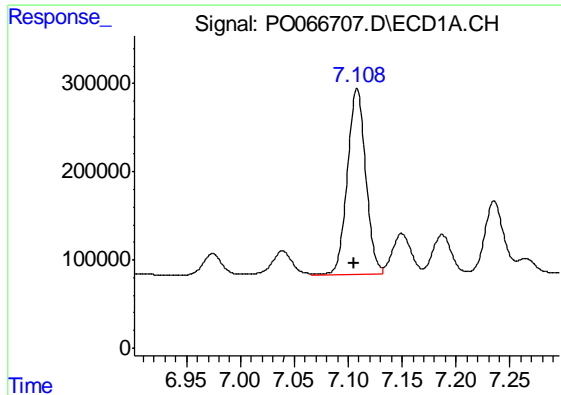
#31 AR-1260-1

R.T.: 6.853 min
 Delta R.T.: 0.003 min
 Response: 1668046
 Conc: 762.10 ng/ml



#31 AR-1260-1

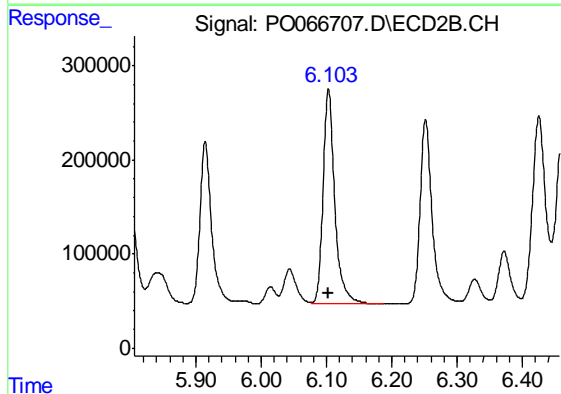
R.T.: 5.914 min
 Delta R.T.: 0.000 min
 Response: 2126866
 Conc: 746.77 ng/ml



#32 AR-1260-2

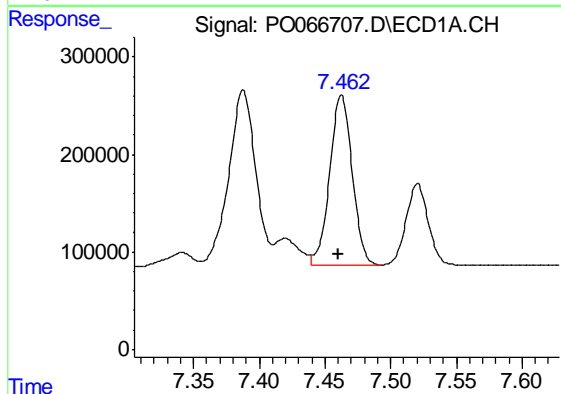
R.T.: 7.108 min
Delta R.T.: 0.003 min
Response: 2494658
Conc: 763.93 ng/ml

Instrument :
ECD_O
ClientSampleId :
AR1660ICC750



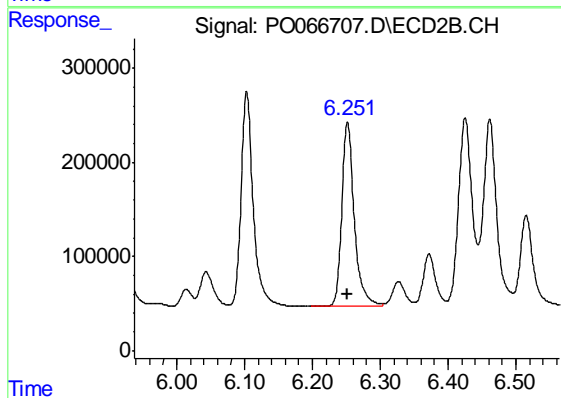
#32 AR-1260-2

R.T.: 6.103 min
Delta R.T.: 0.001 min
Response: 2828204
Conc: 755.75 ng/ml



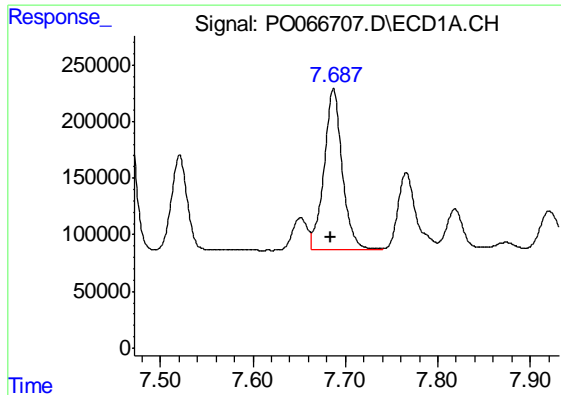
#33 AR-1260-3

R.T.: 7.463 min
Delta R.T.: 0.002 min
Response: 2093324
Conc: 761.07 ng/ml



#33 AR-1260-3

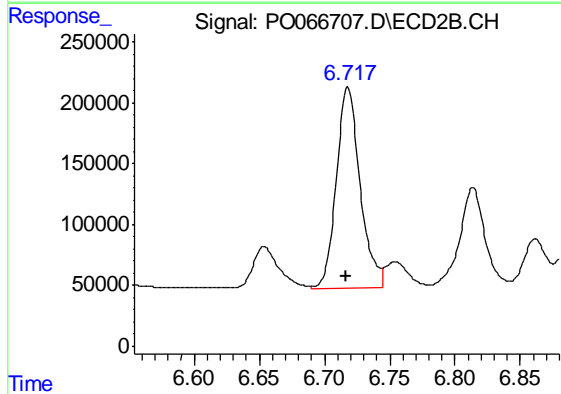
R.T.: 6.252 min
Delta R.T.: 0.000 min
Response: 2498064
Conc: 760.72 ng/ml



#34 AR-1260-4

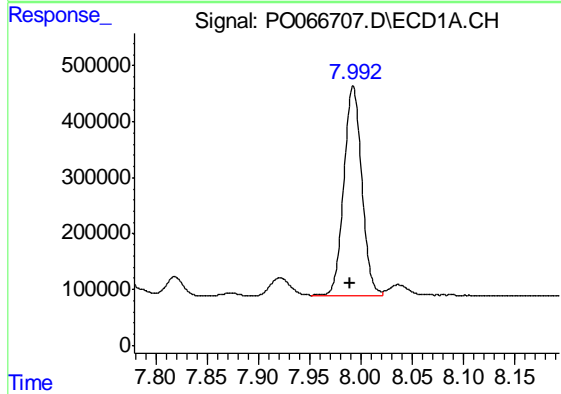
R.T.: 7.687 min
 Delta R.T.: 0.003 min
 Response: 1934255
 Conc: 771.33 ng/ml

Instrument :
 ECD_O
 ClientSampleId :
 AR1660ICC750



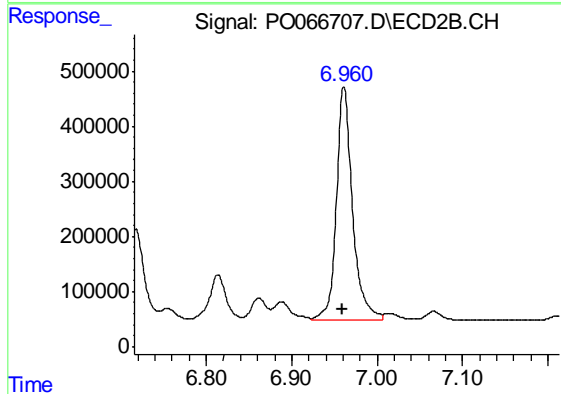
#34 AR-1260-4

R.T.: 6.718 min
 Delta R.T.: 0.001 min
 Response: 2102773
 Conc: 763.10 ng/ml



#35 AR-1260-5

R.T.: 7.992 min
 Delta R.T.: 0.003 min
 Response: 4573641
 Conc: 784.59 ng/ml



#35 AR-1260-5

R.T.: 6.961 min
 Delta R.T.: 0.001 min
 Response: 5604769
 Conc: 781.20 ng/ml