

Data Path : Z:\pestpcbsrv\HPCHEM1\ECD_O\Data\P0022120\
 Data File : P0066709.D
 Signal(s) : Signal #1: ECD1A.CH Signal #2: ECD2B.CH
 Acq On : 21 Feb 2020 11:36
 Operator : DD\AJ
 Sample : AR1660ICC250
 Misc :
 ALS Vial : 6 Sample Multiplier: 1

Instrument :
 ECD_O
 ClientSampleId :
 AR1660ICC250

Integration File signal 1: autoint1.e
 Integration File signal 2: autoint2.e
 Quant Time: Feb 21 12:39:42 2020
 Quant Method : Z:\pestpcbsrv\HPCHEM1\ECD_O\methods\P0022120.M
 Quant Title : GC EXTRACTABLES
 QLast Update : Fri Feb 21 12:38:04 2020
 Response via : Initial Calibration
 Integrator: ChemStation 6890 Scale Mode: Small noise peaks clipped

Volume Inj. : 2 µl
 Signal #1 Phase : ZB-MR1 Signal #2 Phase: ZB-MR2
 Signal #1 Info : 30Mx0.32mmx 0.50µ Signal #2 Info : 30M x 0.32mm x 0.25µm

Compound	RT#1	RT#2	Resp#1	Resp#2	ng/ml	ng/ml

System Monitoring Compounds						
1) SA Tetrachlo...	4.125	3.406	1058389	1377757	25.363	26.198
2) SA Decachlor...	9.593	8.287	1090031	1446974	26.848	27.110
Target Compounds						
3) L1 AR-1016-1	5.272	4.460	414772	413198	265.051	266.623
4) L1 AR-1016-2	5.292	4.476	624850	957266	262.157	280.228
5) L1 AR-1016-3	5.354	4.648	351053	371140	258.696	276.413
6) L1 AR-1016-4	5.451	4.690	309083	321875	247.448	282.124
7) L1 AR-1016-5	5.739	4.898	278002	399157	255.179	275.186
31) L7 AR-1260-1	6.849	5.913	595077	780728	271.882	274.125
32) L7 AR-1260-2	7.104	6.101	876380	1024921	268.369	273.877
33) L7 AR-1260-3	7.459	6.250	721006	904823	262.136	275.539
34) L7 AR-1260-4	7.683	6.715	689199	756124	274.835	274.400
35) L7 AR-1260-5	7.988	6.959	1538015	1915637	263.841	267.004

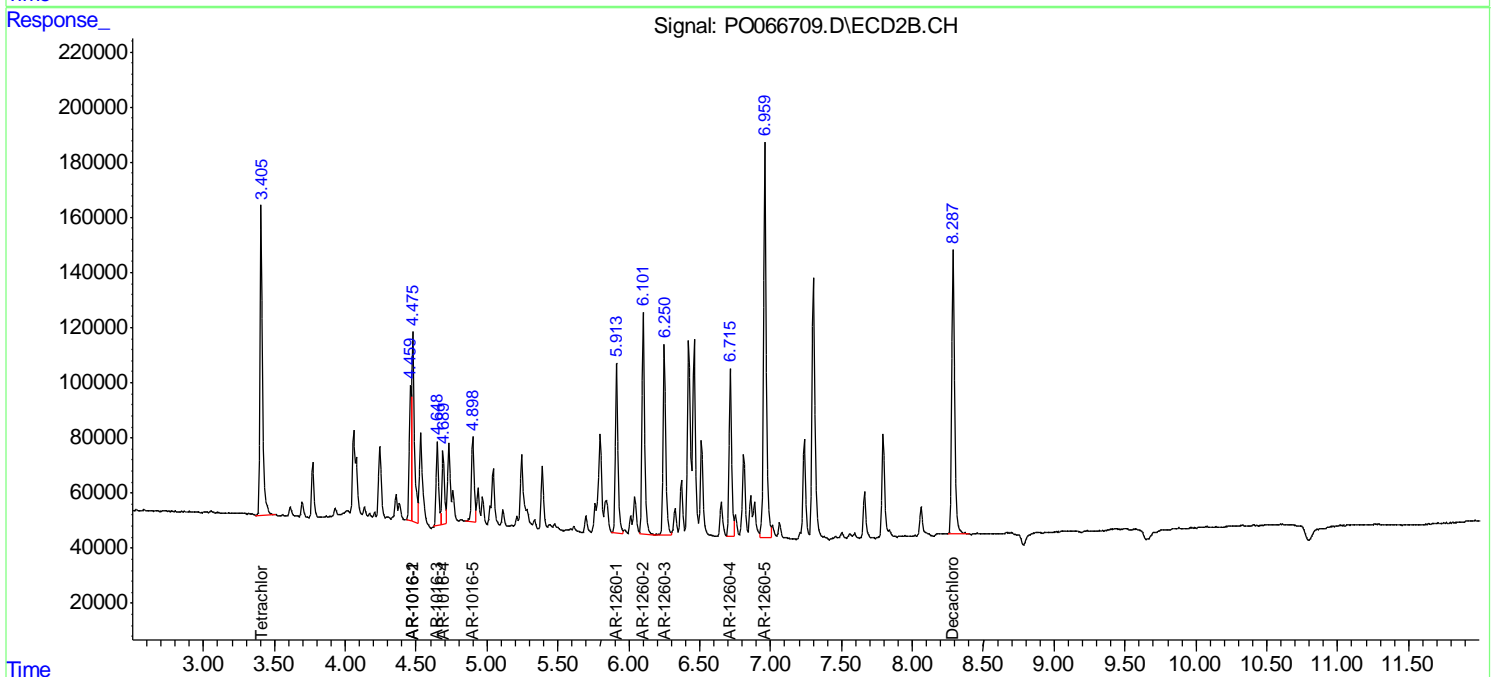
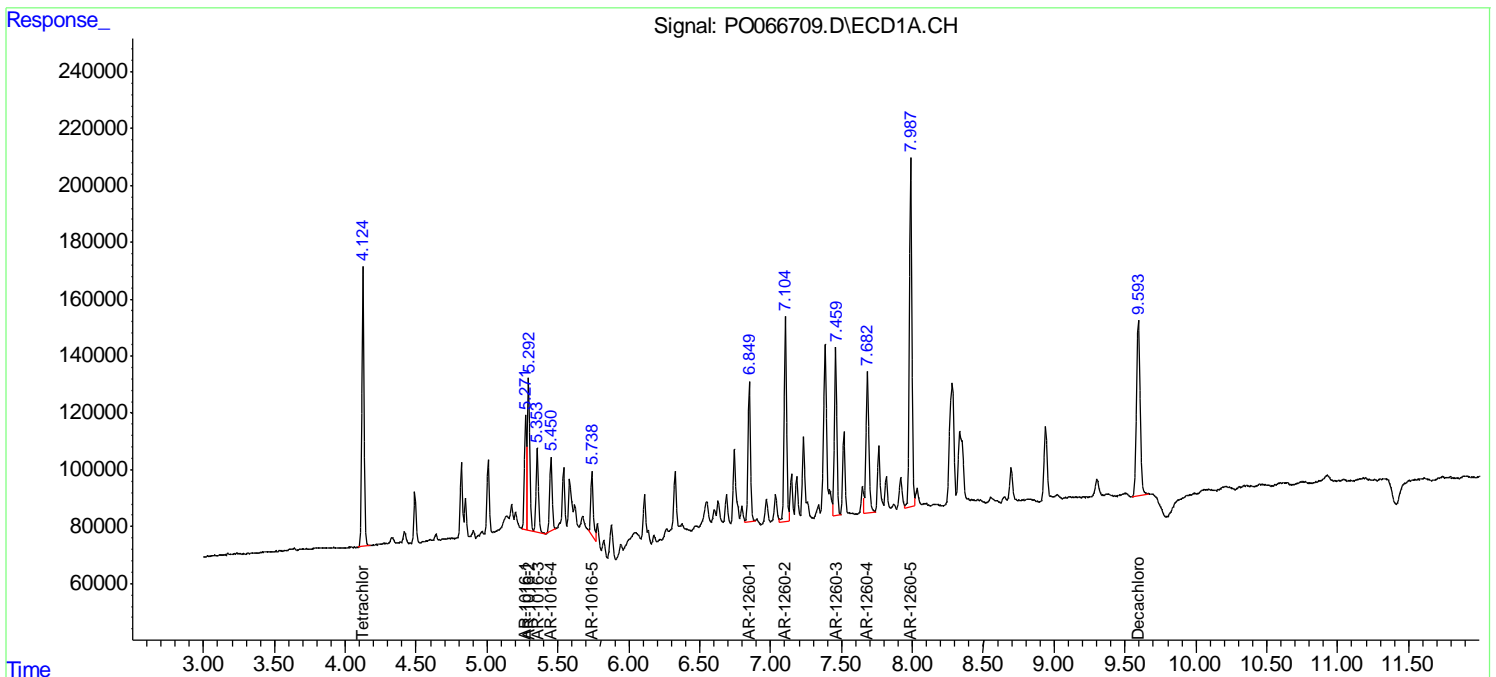
(f)=RT Delta > 1/2 Window (#)=Amounts differ by > 25% (m)=manual int.

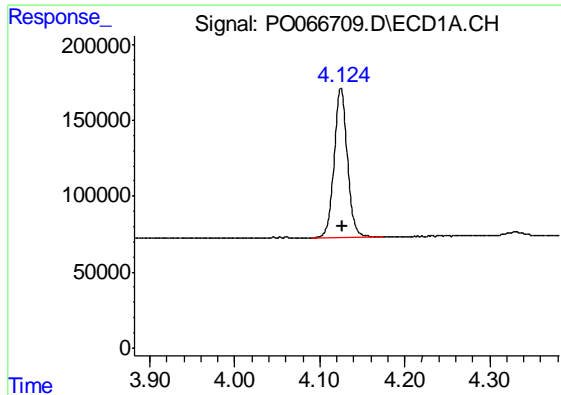
Data Path : Z:\pestpcbsrv\HPCHEM1\ECD_O\Data\PO022120\
 Data File : PO066709.D
 Signal(s) : Signal #1: ECD1A.CH Signal #2: ECD2B.CH
 Acq On : 21 Feb 2020 11:36
 Operator : DD\AJ
 Sample : AR1660ICC250
 Misc :
 ALS Vial : 6 Sample Multiplier: 1

Instrument :
 ECD_O
 ClientSampled :
 AR1660ICC250

Integration File signal 1: autoint1.e
 Integration File signal 2: autoint2.e
 Quant Time: Feb 21 12:39:42 2020
 Quant Method : Z:\pestpcbsrv\HPCHEM1\ECD_O\methods\PO022120.M
 Quant Title : GC EXTRACTABLES
 QLast Update : Fri Feb 21 12:38:04 2020
 Response via : Initial Calibration
 Integrator: ChemStation 6890 Scale Mode: Small noise peaks clipped

Volume Inj. : 2 µl
 Signal #1 Phase : ZB-MR1 Signal #2 Phase: ZB-MR2
 Signal #1 Info : 30Mx0.32mmx 0.50µ Signal #2 Info : 30M x 0.32mm x 0.25µm

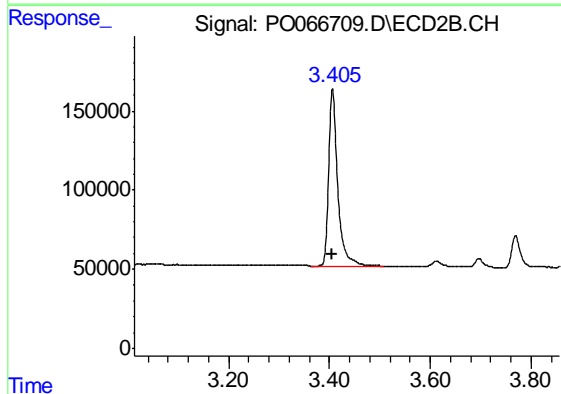




#1 Tetrachloro-m-xylene

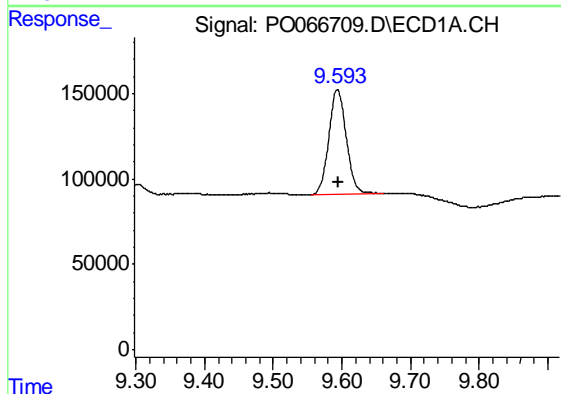
R.T.: 4.125 min
Delta R.T.: -0.001 min
Response: 1058389
Conc: 25.36 ng/ml

Instrument :
ECD_O
ClientSampleId :
AR1660ICC250



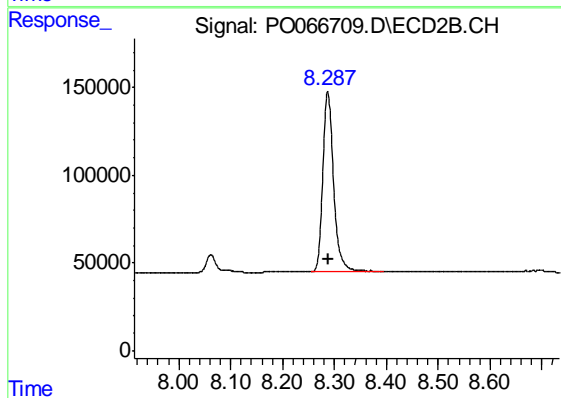
#1 Tetrachloro-m-xylene

R.T.: 3.406 min
Delta R.T.: 0.000 min
Response: 1377757
Conc: 26.20 ng/ml



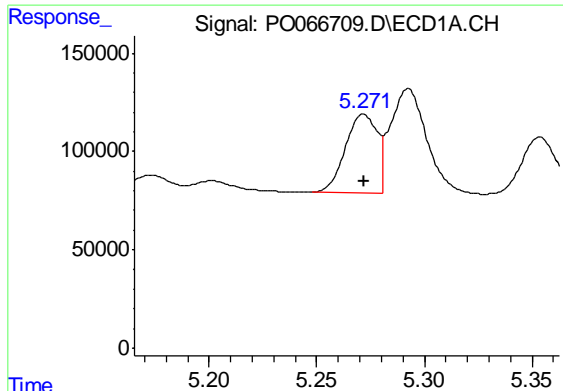
#2 Decachlorobiphenyl

R.T.: 9.593 min
Delta R.T.: -0.002 min
Response: 1090031
Conc: 26.85 ng/ml



#2 Decachlorobiphenyl

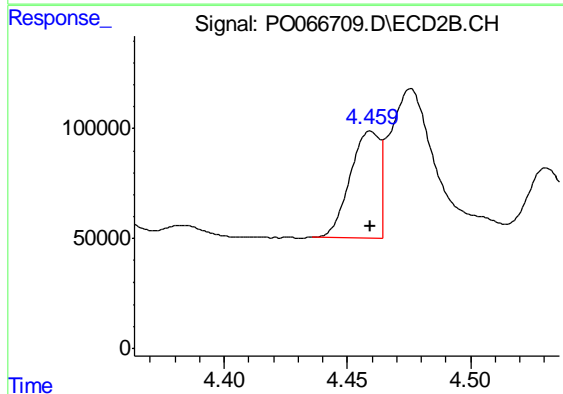
R.T.: 8.287 min
Delta R.T.: 0.000 min
Response: 1446974
Conc: 27.11 ng/ml



#3 AR-1016-1

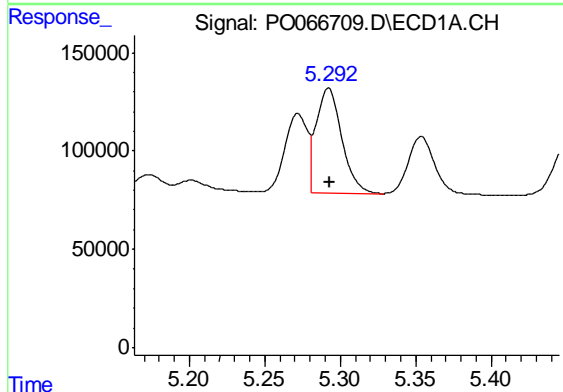
R.T.: 5.272 min
 Delta R.T.: 0.000 min
 Response: 414772
 Conc: 265.05 ng/ml

Instrument :
 ECD_O
 ClientSampleId :
 AR1660ICC250



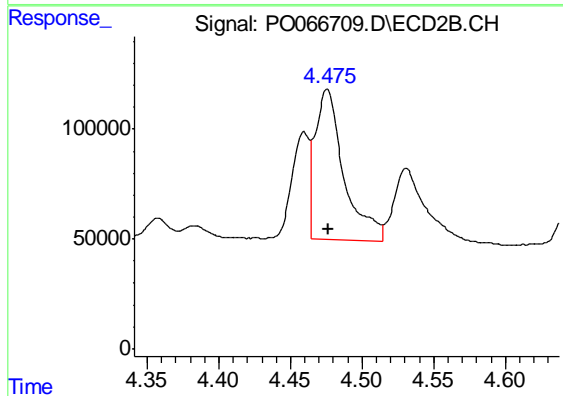
#3 AR-1016-1

R.T.: 4.460 min
 Delta R.T.: 0.000 min
 Response: 413198
 Conc: 266.62 ng/ml



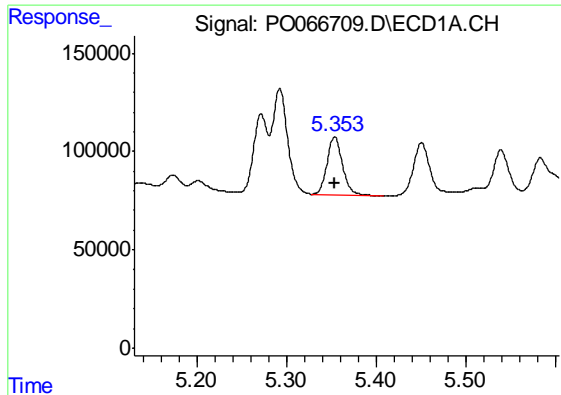
#4 AR-1016-2

R.T.: 5.292 min
 Delta R.T.: 0.000 min
 Response: 624850
 Conc: 262.16 ng/ml



#4 AR-1016-2

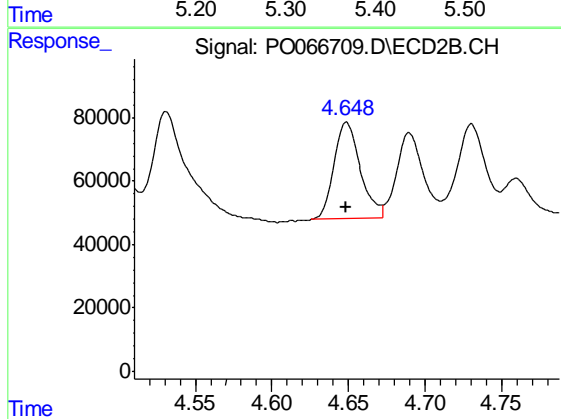
R.T.: 4.476 min
 Delta R.T.: 0.000 min
 Response: 957266
 Conc: 280.23 ng/ml



#5 AR-1016-3

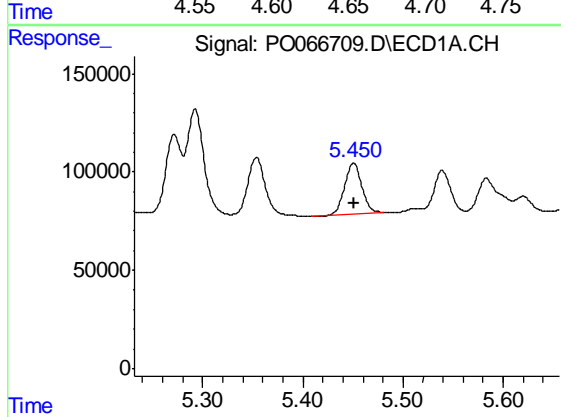
R.T.: 5.354 min
 Delta R.T.: 0.000 min
 Response: 351053
 Conc: 258.70 ng/ml

Instrument :
 ECD_O
 ClientSampleId :
 AR1660ICC250



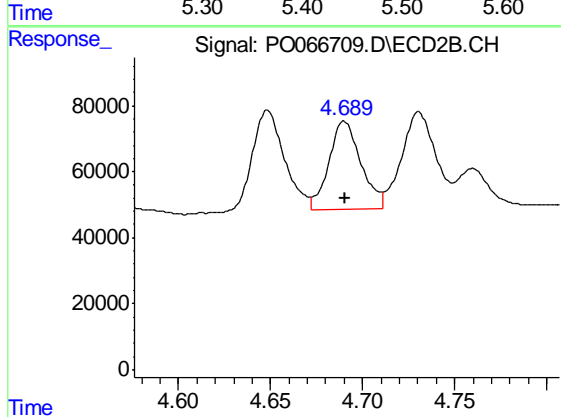
#5 AR-1016-3

R.T.: 4.648 min
 Delta R.T.: 0.000 min
 Response: 371140
 Conc: 276.41 ng/ml



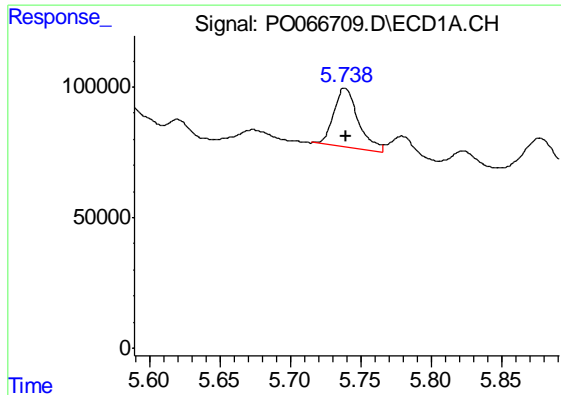
#6 AR-1016-4

R.T.: 5.451 min
 Delta R.T.: 0.000 min
 Response: 309083
 Conc: 247.45 ng/ml



#6 AR-1016-4

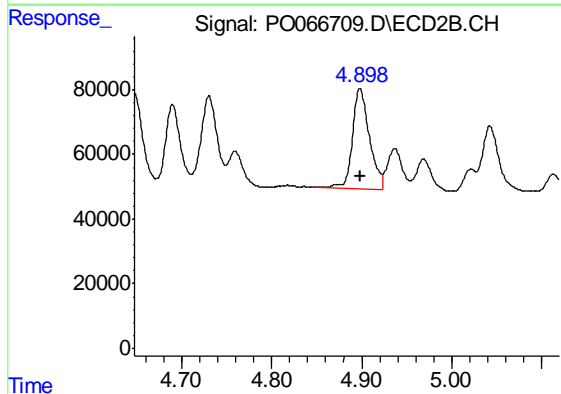
R.T.: 4.690 min
 Delta R.T.: 0.000 min
 Response: 321875
 Conc: 282.12 ng/ml



#7 AR-1016-5

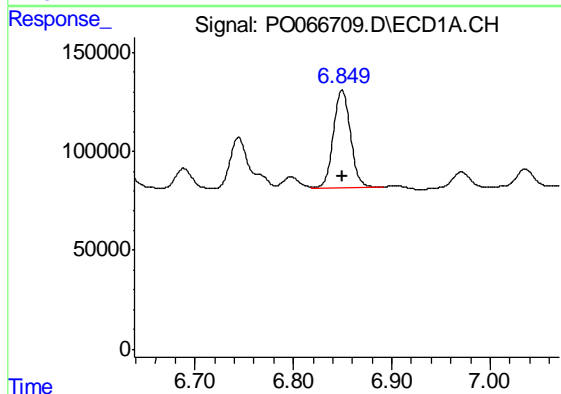
R.T.: 5.739 min
 Delta R.T.: -0.001 min
 Response: 278002
 Conc: 255.18 ng/ml

Instrument :
 ECD_O
 ClientSampleId :
 AR1660ICC250



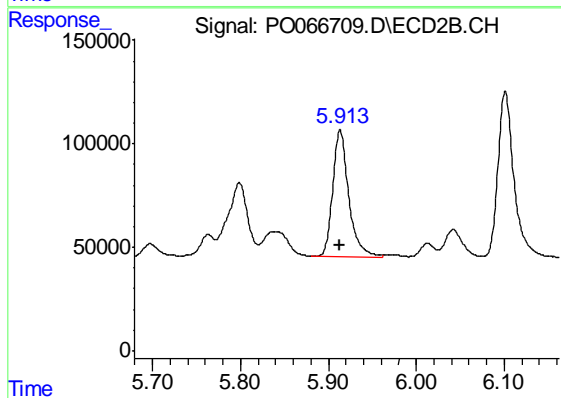
#7 AR-1016-5

R.T.: 4.898 min
 Delta R.T.: -0.001 min
 Response: 399157
 Conc: 275.19 ng/ml



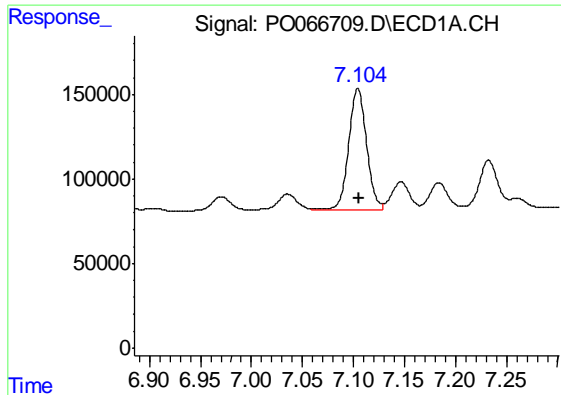
#31 AR-1260-1

R.T.: 6.849 min
 Delta R.T.: 0.000 min
 Response: 595077
 Conc: 271.88 ng/ml



#31 AR-1260-1

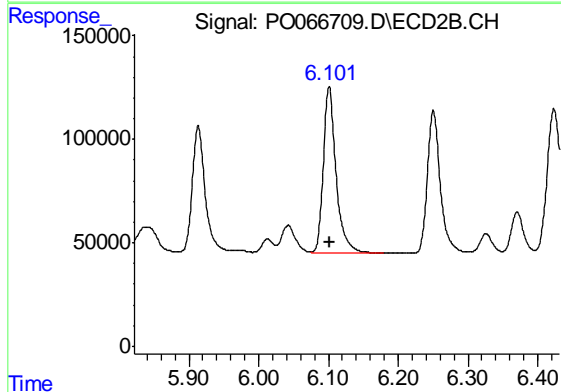
R.T.: 5.913 min
 Delta R.T.: 0.000 min
 Response: 780728
 Conc: 274.12 ng/ml



#32 AR-1260-2

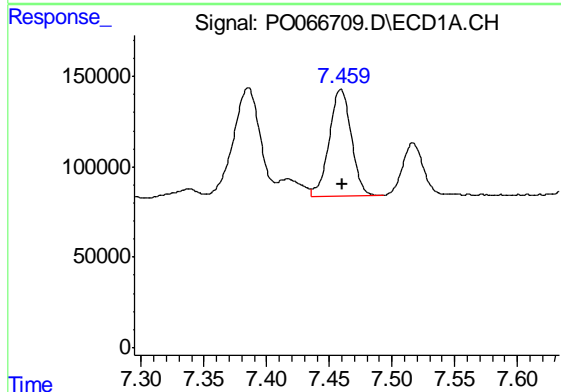
R.T.: 7.104 min
Delta R.T.: -0.001 min
Response: 876380
Conc: 268.37 ng/ml

Instrument :
ECD_O
ClientSampled :
AR1660ICC250



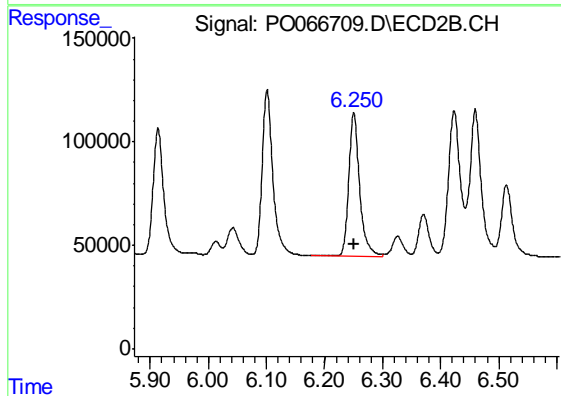
#32 AR-1260-2

R.T.: 6.101 min
Delta R.T.: 0.000 min
Response: 1024921
Conc: 273.88 ng/ml



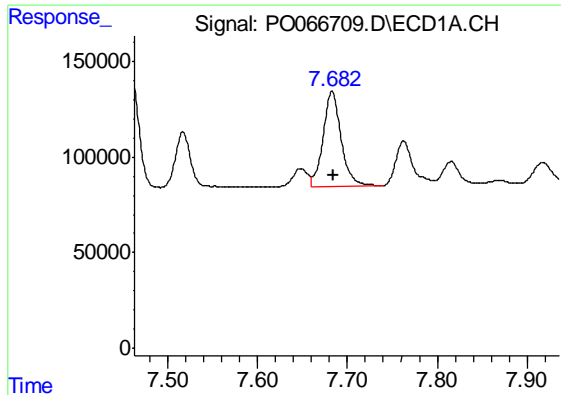
#33 AR-1260-3

R.T.: 7.459 min
Delta R.T.: -0.001 min
Response: 721006
Conc: 262.14 ng/ml



#33 AR-1260-3

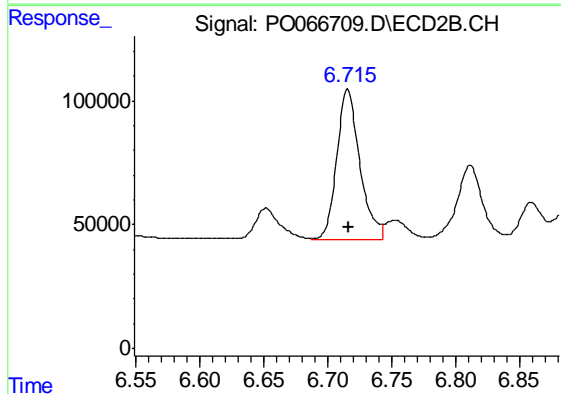
R.T.: 6.250 min
Delta R.T.: 0.000 min
Response: 904823
Conc: 275.54 ng/ml



#34 AR-1260-4

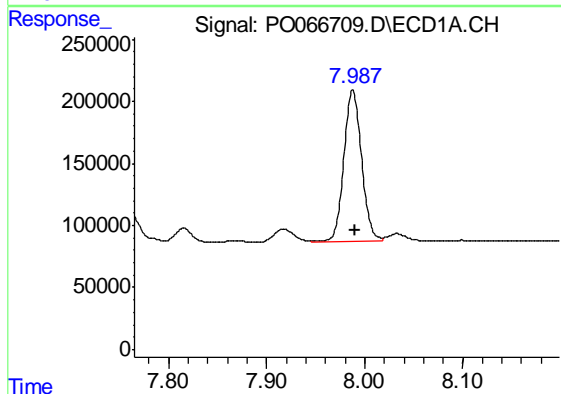
R.T.: 7.683 min
Delta R.T.: -0.001 min
Response: 689199
Conc: 274.83 ng/ml

Instrument :
ECD_O
ClientSampleId :
AR1660ICC250



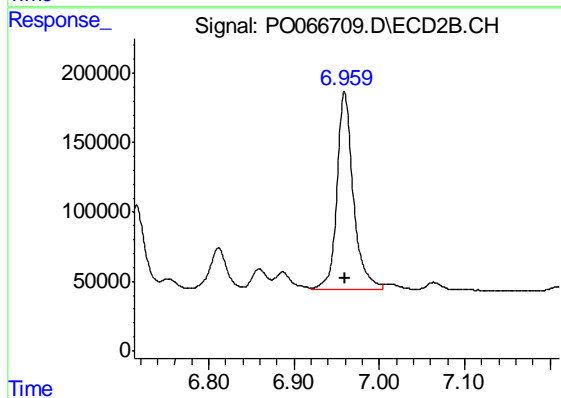
#34 AR-1260-4

R.T.: 6.715 min
Delta R.T.: -0.001 min
Response: 756124
Conc: 274.40 ng/ml



#35 AR-1260-5

R.T.: 7.988 min
Delta R.T.: -0.002 min
Response: 1538015
Conc: 263.84 ng/ml



#35 AR-1260-5

R.T.: 6.959 min
Delta R.T.: 0.000 min
Response: 1915637
Conc: 267.00 ng/ml