

Data Path : Z:\pestpcbsrv\HPCHEM1\ECD_0\Data\P0022120\
 Data File : P0066716.D
 Signal(s) : Signal #1: ECD1A.CH Signal #2: ECD2B.CH
 Acq On : 21 Feb 2020 13:32
 Operator : DD\AJ
 Sample : AR1262ICC500
 Misc :
 ALS Vial : 13 Sample Multiplier: 1

Instrument :
 ECD_0
 ClientSampleId :
 AR1262ICC500

Integration File signal 1: autoint1.e
 Integration File signal 2: autoint2.e
 Quant Time: Feb 21 14:35:12 2020
 Quant Method : Z:\pestpcbsrv\HPCHEM1\ECD_0\methods\P0022120.M
 Quant Title : GC EXTRACTABLES
 QLast Update : Fri Feb 21 14:33:37 2020
 Response via : Initial Calibration
 Integrator: ChemStation 6890 Scale Mode: Small noise peaks clipped

Volume Inj. : 2 µl
 Signal #1 Phase : ZB-MR1 Signal #2 Phase: ZB-MR2
 Signal #1 Info : 30Mx0.32mmx 0.50µ Signal #2 Info : 30M x 0.32mm x 0.25µm

Compound	RT#1	RT#2	Resp#1	Resp#2	ng/ml	ng/ml

System Monitoring Compounds						
1) SA Tetrachlo...	4.124	3.406	1997339	2495759	50.000	50.000
2) SA Decachlor...	9.593	8.286	2068797	2755251	50.000	50.000
Target Compounds						
36) L8 AR-1262-1	7.460	6.423	1941628	964036	500.000	500.000
37) L8 AR-1262-2	7.988	6.959	3138620	3994774	500.000	500.000
38) L8 AR-1262-3	8.268	7.236	2031180	1626104	500.000	500.000
39) L8 AR-1262-4	8.349	7.302	1537593	2873927	500.000	500.000
40) L8 AR-1262-5	8.939	7.794	1017215	1253162	500.000	500.000

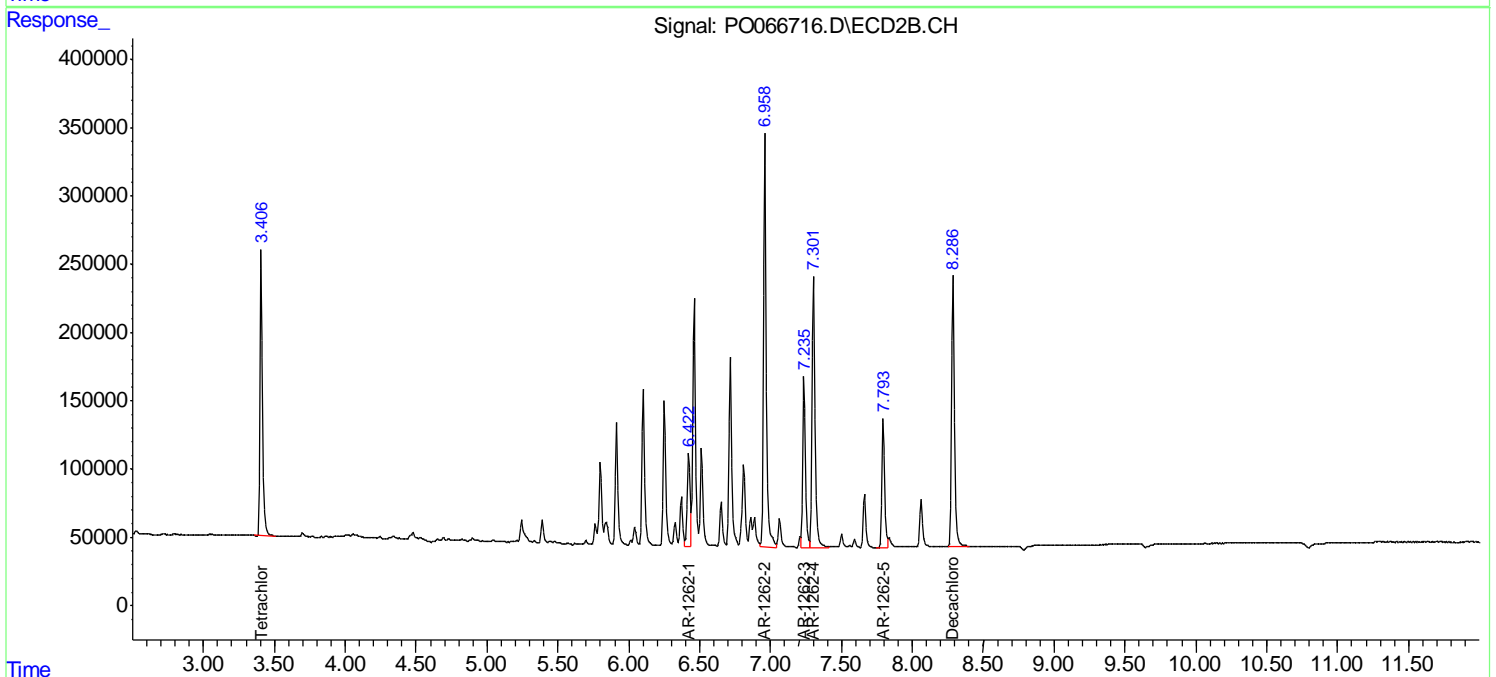
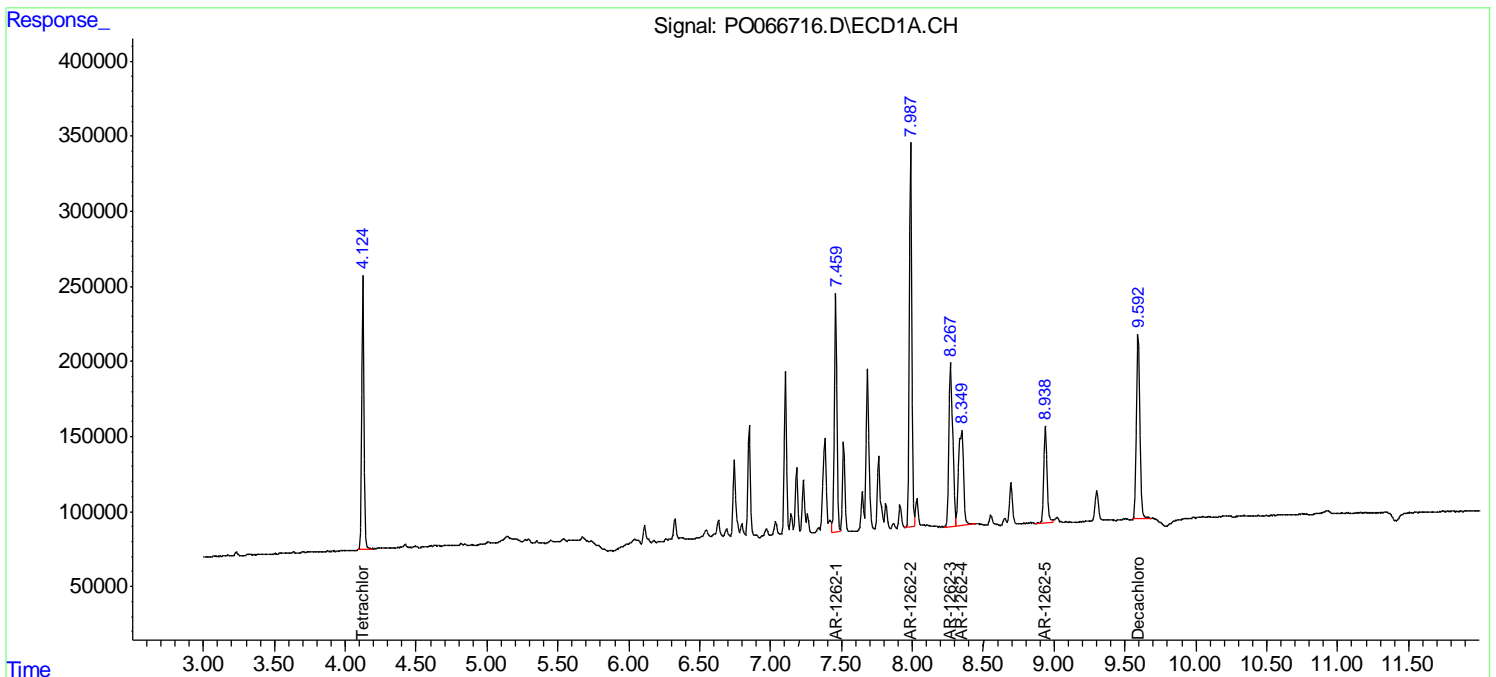
(f)=RT Delta > 1/2 Window (#)=Amounts differ by > 25% (m)=manual int.

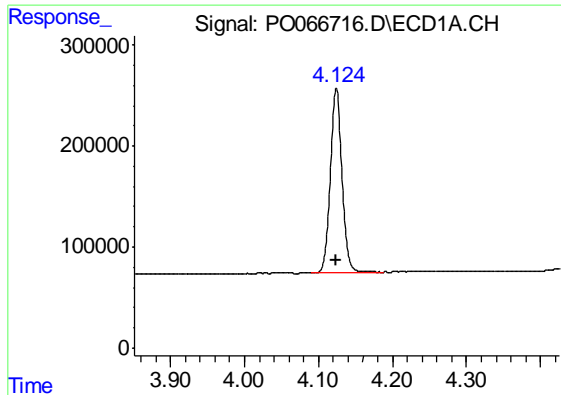
Data Path : Z:\pestpcbsrv\HPCHEM1\ECD_O\Data\P0022120\
 Data File : P0066716.D
 Signal(s) : Signal #1: ECD1A.CH Signal #2: ECD2B.CH
 Acq On : 21 Feb 2020 13:32
 Operator : DD\AJ
 Sample : AR1262ICC500
 Misc :
 ALS Vial : 13 Sample Multiplier: 1

Instrument :
 ECD_O
 ClientSampled :
 AR1262ICC500

Integration File signal 1: autoint1.e
 Integration File signal 2: autoint2.e
 Quant Time: Feb 21 14:35:12 2020
 Quant Method : Z:\pestpcbsrv\HPCHEM1\ECD_O\methods\P0022120.M
 Quant Title : GC EXTRACTABLES
 QLast Update : Fri Feb 21 14:33:37 2020
 Response via : Initial Calibration
 Integrator: ChemStation 6890 Scale Mode: Small noise peaks clipped

Volume Inj. : 2 µl
 Signal #1 Phase : ZB-MR1 Signal #2 Phase: ZB-MR2
 Signal #1 Info : 30Mx0.32mmx 0.50µ Signal #2 Info : 30M x 0.32mm x 0.25µm

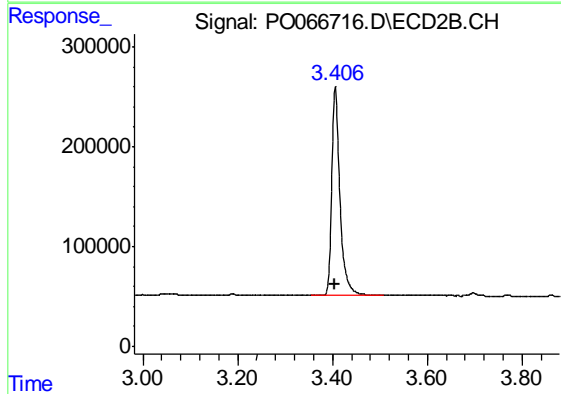




#1 Tetrachloro-m-xylene

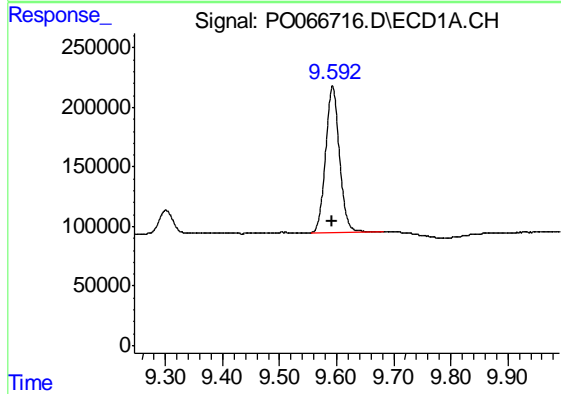
R.T.: 4.124 min
Delta R.T.: 0.000 min
Response: 1997339
Conc: 50.00 ng/ml

Instrument :
ECD_O
ClientSampleId :
AR1262ICC500



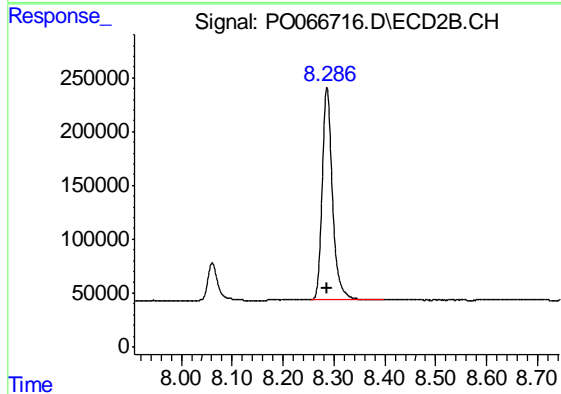
#1 Tetrachloro-m-xylene

R.T.: 3.406 min
Delta R.T.: 0.000 min
Response: 2495759
Conc: 50.00 ng/ml



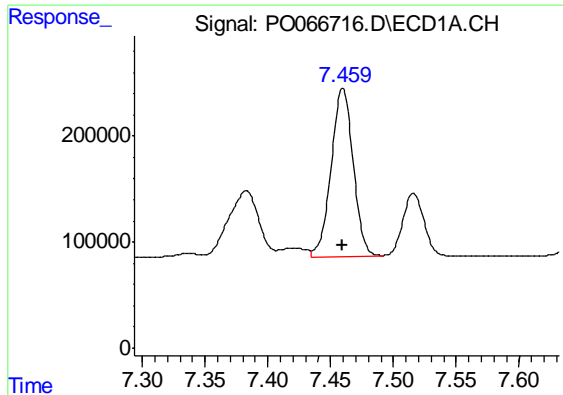
#2 Decachlorobiphenyl

R.T.: 9.593 min
Delta R.T.: 0.000 min
Response: 2068797
Conc: 50.00 ng/ml



#2 Decachlorobiphenyl

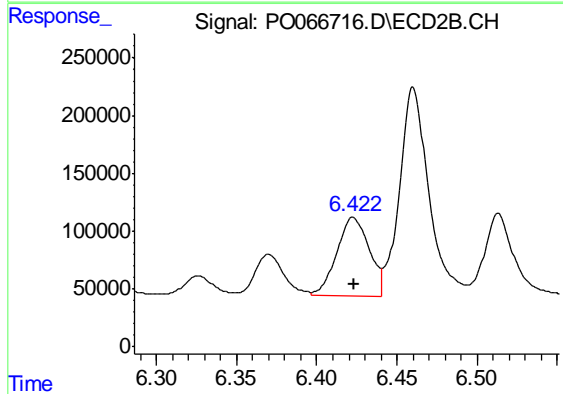
R.T.: 8.286 min
Delta R.T.: 0.000 min
Response: 2755251
Conc: 50.00 ng/ml



#36 AR-1262-1

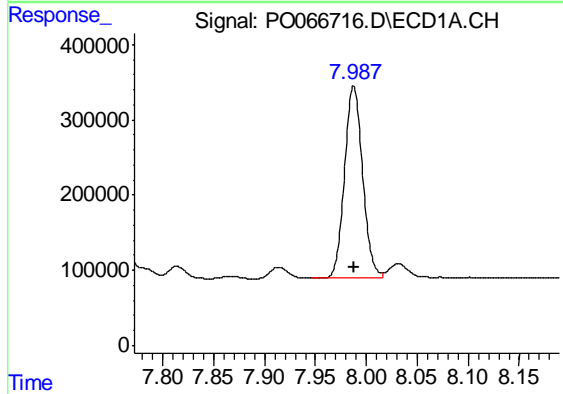
R.T.: 7.460 min
Delta R.T.: 0.000 min
Response: 1941628
Conc: 500.00 ng/ml

Instrument :
ECD_O
ClientSampleId :
AR1262ICC500



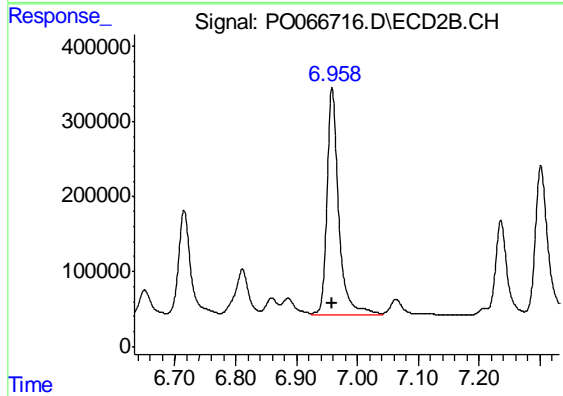
#36 AR-1262-1

R.T.: 6.423 min
Delta R.T.: 0.000 min
Response: 964036
Conc: 500.00 ng/ml



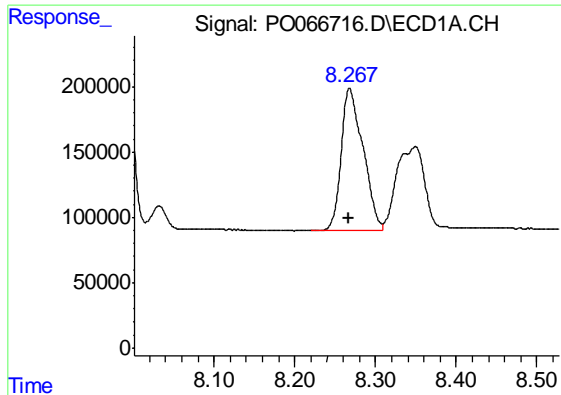
#37 AR-1262-2

R.T.: 7.988 min
Delta R.T.: 0.000 min
Response: 3138620
Conc: 500.00 ng/ml



#37 AR-1262-2

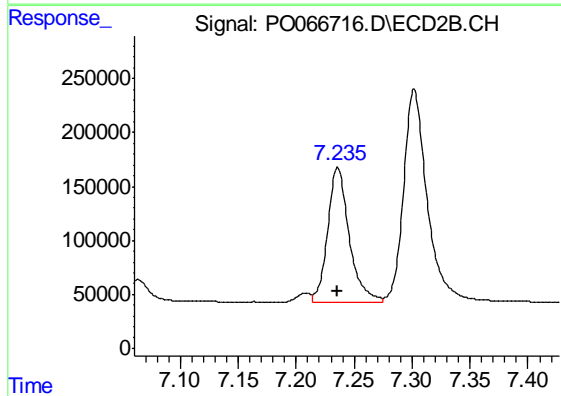
R.T.: 6.959 min
Delta R.T.: 0.000 min
Response: 3994774
Conc: 500.00 ng/ml



#38 AR-1262-3

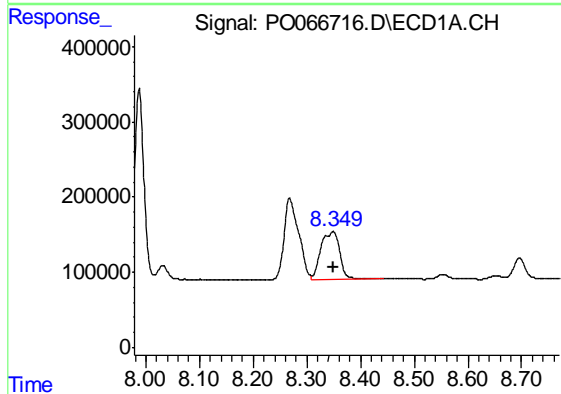
R.T.: 8.268 min
Delta R.T.: 0.000 min
Response: 2031180
Conc: 500.00 ng/ml

Instrument :
ECD_O
ClientSampleId :
AR1262ICC500



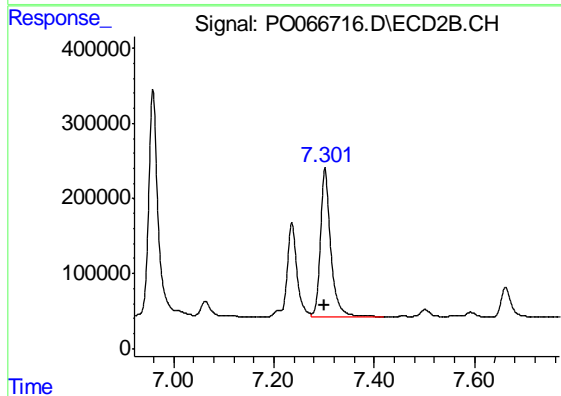
#38 AR-1262-3

R.T.: 7.236 min
Delta R.T.: 0.000 min
Response: 1626104
Conc: 500.00 ng/ml



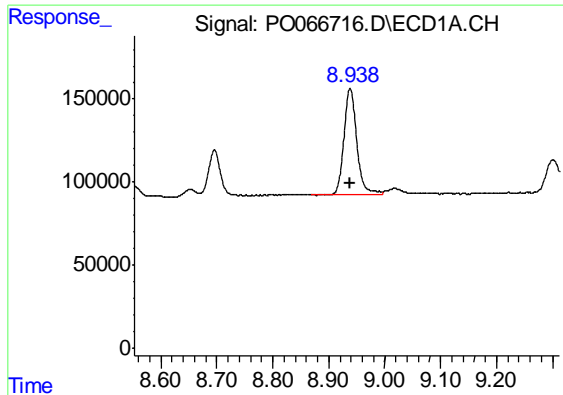
#39 AR-1262-4

R.T.: 8.349 min
Delta R.T.: 0.000 min
Response: 1537593
Conc: 500.00 ng/ml



#39 AR-1262-4

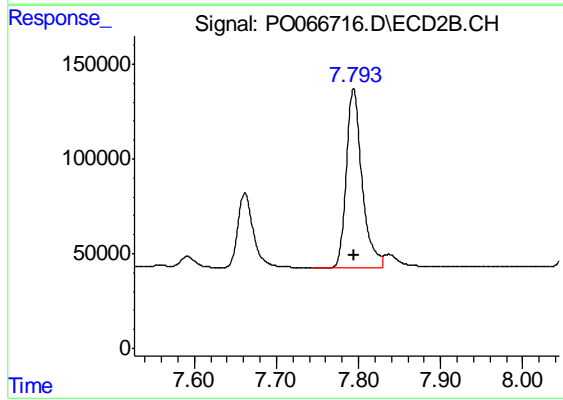
R.T.: 7.302 min
Delta R.T.: 0.000 min
Response: 2873927
Conc: 500.00 ng/ml



#40 AR-1262-5

R.T.: 8.939 min
Delta R.T.: 0.000 min
Response: 1017215
Conc: 500.00 ng/ml

Instrument :
ECD_O
ClientSampleId :
AR1262ICC500



#40 AR-1262-5

R.T.: 7.794 min
Delta R.T.: 0.000 min
Response: 1253162
Conc: 500.00 ng/ml