

Data Path : Z:\pestpcbsrv\HPCHEM1\ECD_0\Data\P0022122\
 Data File : P0084776.D
 Signal(s) : Signal #1: ECD1A.CH Signal #2: ECD2B.CH
 Acq On : 21 Feb 2022 17:40
 Operator : YP\AJ
 Sample : N1611-08
 Misc :
 ALS Vial : 19 Sample Multiplier: 1

Instrument :
 ECD_0
 ClientSampleId :
 WATER-COMP

Integration File signal 1: autoint1.e
 Integration File signal 2: autoint2.e
 Quant Time: Feb 22 00:54:43 2022
 Quant Method : Z:\pestpcbsrv\HPCHEM1\ECD_0\methods\P0021422.M
 Quant Title : GC EXTRACTABLES
 QLast Update : Mon Feb 14 17:50:29 2022
 Response via : Initial Calibration
 Integrator: ChemStation 6890 Scale Mode: Small noise peaks clipped

Volume Inj. : 2 µl
 Signal #1 Phase : ZB-MR1 Signal #2 Phase: ZB-MR2
 Signal #1 Info : 30Mx0.32mmx 0.50µ Signal #2 Info : 30M x 0.32mm x 0.25µm

Compound	RT#1	RT#2	Resp#1	Resp#2	ng/ml	ng/ml

System Monitoring Compounds						
1) SA Tetrachlo...	4.508	3.598	4221256	894903	21.469	19.843
2) SA Decachlor...	10.429	8.621	2759395	692193	22.237	18.988

Target Compounds

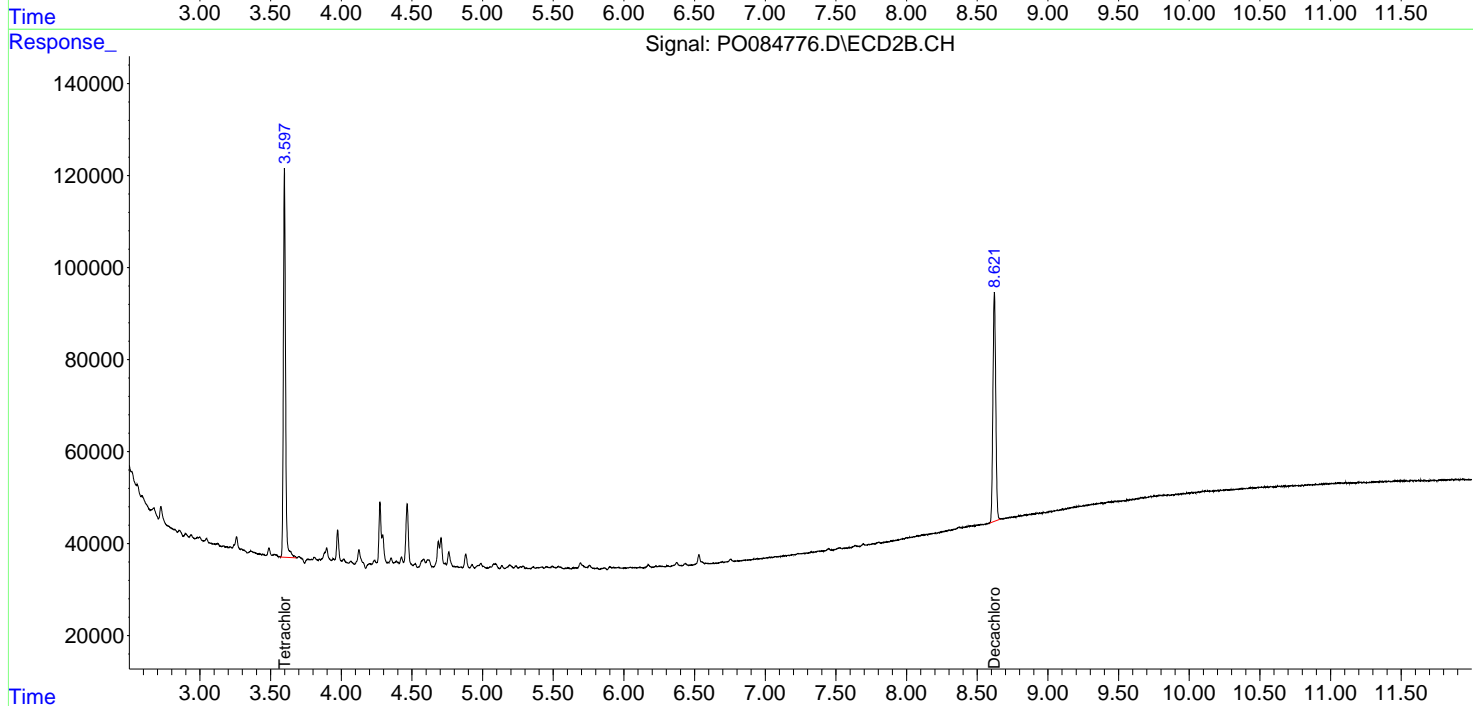
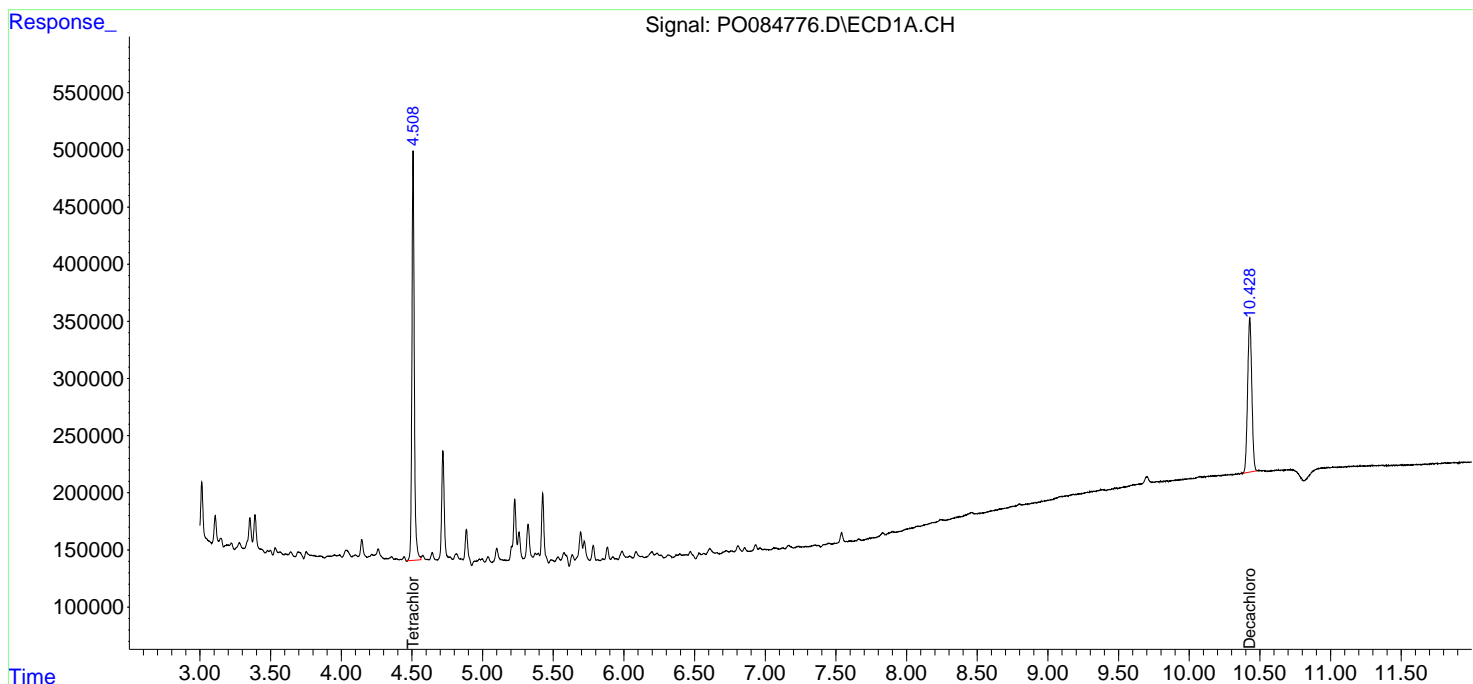
(f)=RT Delta > 1/2 Window (#)=Amounts differ by > 25% (m)=manual int.

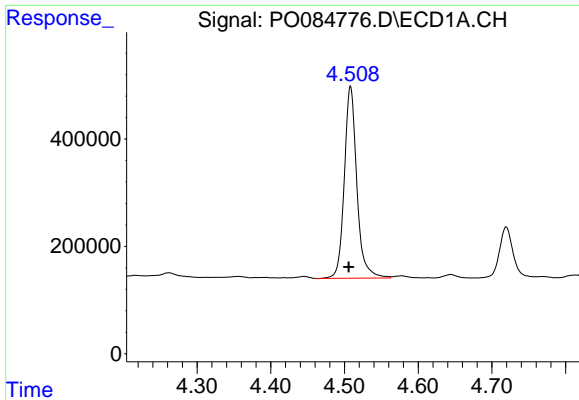
Data Path : Z:\pestpcbsrv\HPCHEM1\ECD_0\Data\P0022122\
 Data File : P0084776.D
 Signal(s) : Signal #1: ECD1A.CH Signal #2: ECD2B.CH
 Acq On : 21 Feb 2022 17:40
 Operator : YP\AJ
 Sample : N1611-08
 Misc :
 ALS Vial : 19 Sample Multiplier: 1

Instrument :
 ECD_0
 ClientSampleId :
 WATER-COMP

Integration File signal 1: autoint1.e
 Integration File signal 2: autoint2.e
 Quant Time: Feb 22 00:54:43 2022
 Quant Method : Z:\pestpcbsrv\HPCHEM1\ECD_0\methods\P0021422.M
 Quant Title : GC EXTRACTABLES
 QLast Update : Mon Feb 14 17:50:29 2022
 Response via : Initial Calibration
 Integrator: ChemStation 6890 Scale Mode: Small noise peaks clipped

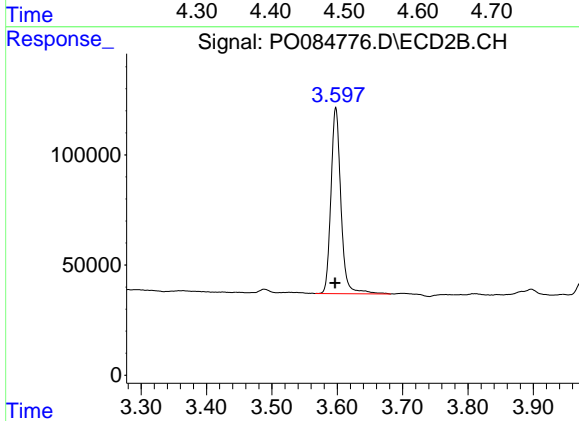
Volume Inj. : 2 µl
 Signal #1 Phase : ZB-MR1 Signal #2 Phase: ZB-MR2
 Signal #1 Info : 30Mx0.32mmx 0.50µ Signal #2 Info : 30M x 0.32mm x 0.25µm



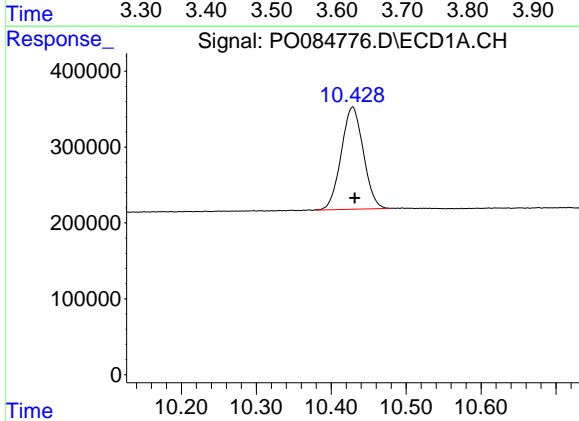


#1 Tetrachloro-m-xylene
 R.T.: 4.508 min
 Delta R.T.: 0.002 min
 Response: 4221256
 Conc: 21.47 ng/ml

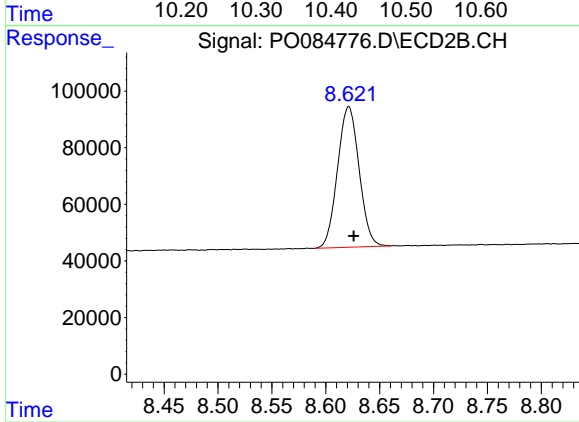
Instrument :
 ECD_O
 ClientSampleId :
 WATER-COMP



#1 Tetrachloro-m-xylene
 R.T.: 3.598 min
 Delta R.T.: 0.001 min
 Response: 894903
 Conc: 19.84 ng/ml



#2 Decachlorobiphenyl
 R.T.: 10.429 min
 Delta R.T.: -0.003 min
 Response: 2759395
 Conc: 22.24 ng/ml



#2 Decachlorobiphenyl
 R.T.: 8.621 min
 Delta R.T.: -0.005 min
 Response: 692193
 Conc: 18.99 ng/ml