

Data Path : Z:\pestpcbsrv\HPCHEM1\ECD_0\Data\P0022124\
 Data File : P0101983.D
 Signal(s) : Signal #1: ECD1A.ch Signal #2: ECD2B.ch
 Acq On : 22 Feb 2024 01:04
 Operator : YP/AJ
 Sample : AR1660CCC500
 Misc :
 ALS Vial : 3 Sample Multiplier: 1

Instrument :
 ECD_0
ClientSampleId :
 AR1660CCC500

Manual Integrations
APPROVED

Reviewed By :Yogesh Patel 02/22/2024
 Supervised By :Ankita Jodhani 02/22/2024

Integration File signal 1: autoint1.e
 Integration File signal 2: autoint2.e
 Quant Time: Feb 22 02:08:25 2024
 Quant Method : Z:\pestpcbsrv\HPCHEM1\ECD_0\methods\P0021024.M
 Quant Title : GC EXTRACTABLES
 QLast Update : Mon Feb 12 05:22:08 2024
 Response via : Initial Calibration
 Integrator: ChemStation

Volume Inj. : 2 µl
 Signal #1 Phase : ZB-MR2 Signal #2 Phase: ZB-MR2
 Signal #1 Info : 30Mx0.32mmx 0.50µ Signal #2 Info : 30M x 0.32mm x 0.25µm

Compound	RT#1	RT#2	Resp#1	Resp#2	ng/ml	ng/ml

System Monitoring Compounds						
1) SA Tetrachlo...	4.283	3.394	166.9E6	128.6E6	54.115	48.381
2) SA Decachlor...	9.835	8.270	116.1E6	84955921	55.344	44.717
Target Compounds						
3) L1 AR-1016-1	5.428	4.447	54007761	39493281	547.648	541.300
4) L1 AR-1016-2	5.450	4.465	80266784	54434328	552.115	515.962m
5) L1 AR-1016-3	5.511	4.637	51612562	31193650	542.309	543.738m
6) L1 AR-1016-4	5.608	4.678	42852065	24857986	561.708	493.783m
7) L1 AR-1016-5	5.898	4.887	40495094	32835934	510.143m	519.189
31) L7 AR-1260-1	7.010	5.901	72127227	61697315	549.510	499.726
32) L7 AR-1260-2	7.264	6.088	80430564	71969060	564.315	498.538
33) L7 AR-1260-3	7.620	6.238	56075594	68971748	532.534	527.710
34) L7 AR-1260-4	7.844	6.703	61138348	51040787	547.360	462.796
35) L7 AR-1260-5	8.149	6.944	117.5E6	113.0E6	535.606	478.011

(f)=RT Delta > 1/2 Window (#)=Amounts differ by > 25% (m)=manual int.

Data Path : Z:\pestpcbsrv\HPCHEM1\ECD_O\Data\PO022124\
 Data File : PO101983.D
 Signal(s) : Signal #1: ECD1A.ch Signal #2: ECD2B.ch
 Acq On : 22 Feb 2024 01:04
 Operator : YP/AJ
 Sample : AR1660CCC500
 Misc :
 ALS Vial : 3 Sample Multiplier: 1

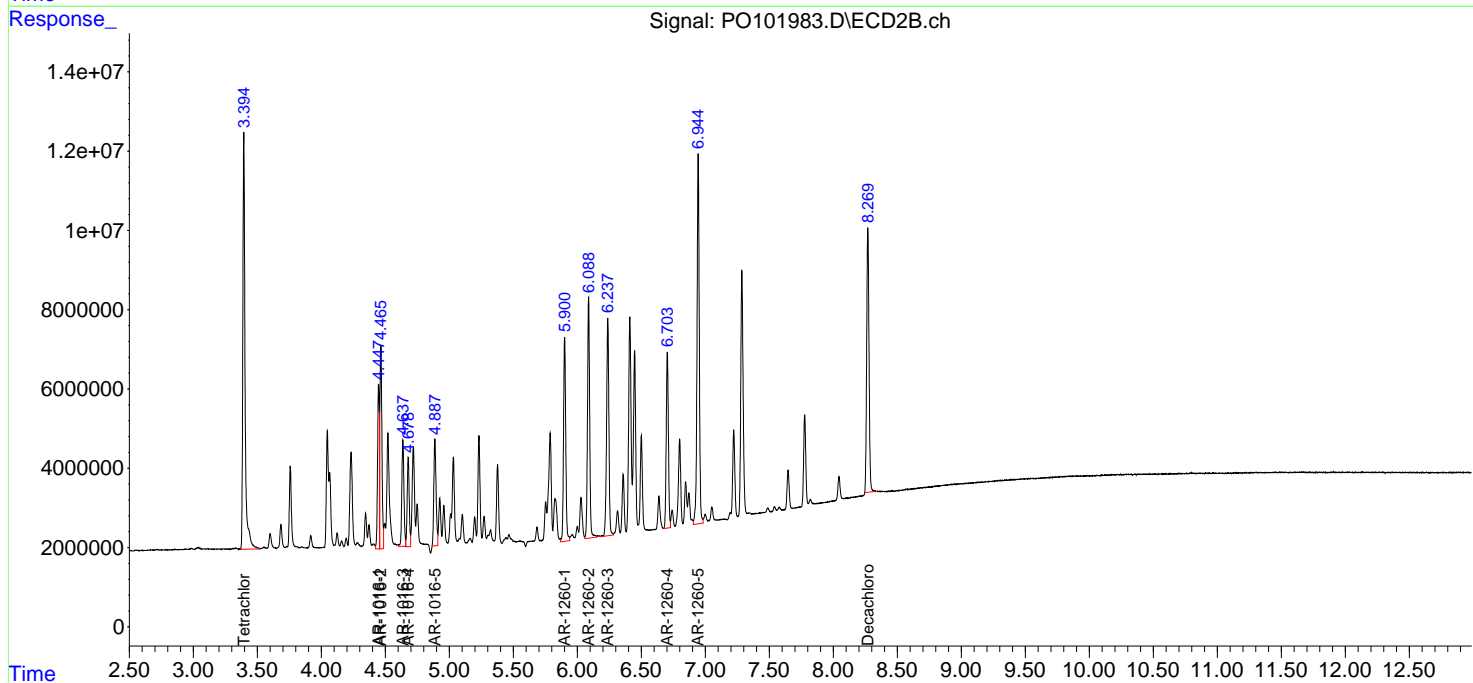
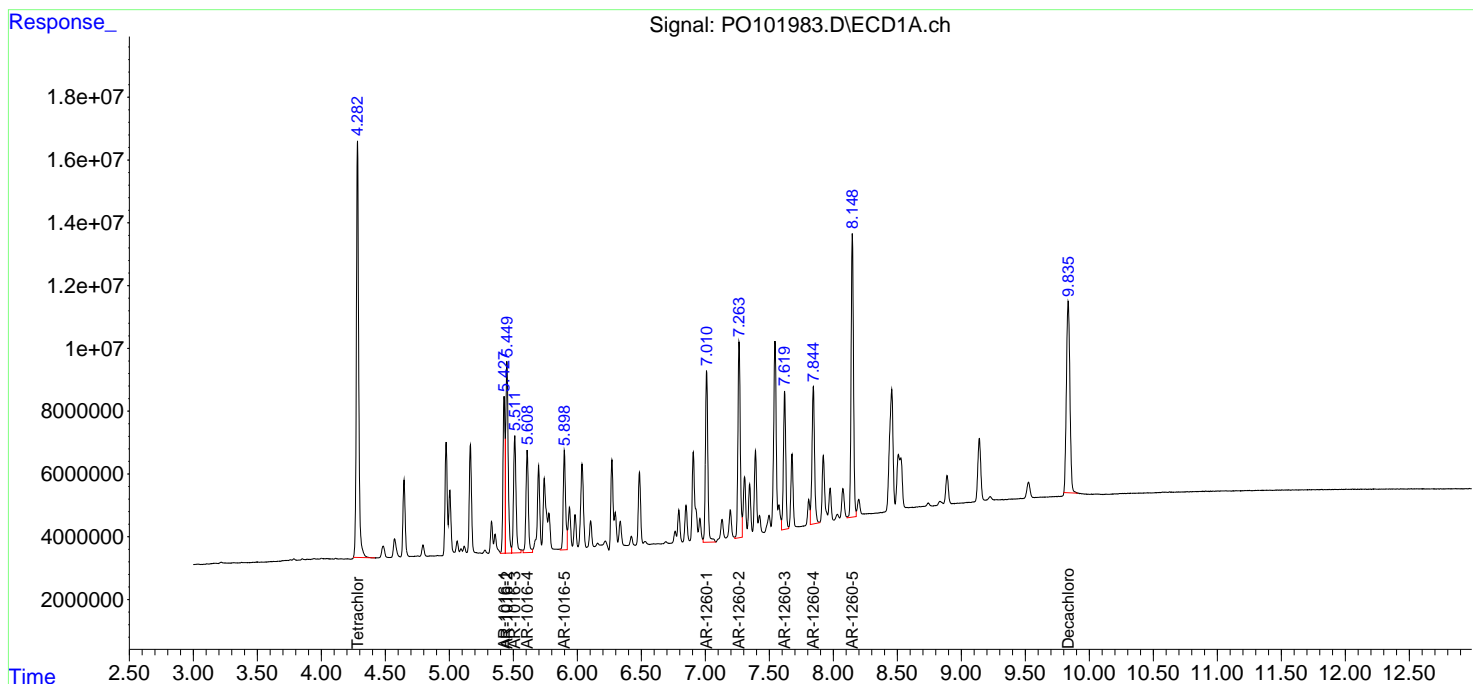
Instrument :
 ECD_O
 ClientSampleId :
 AR1660CCC500

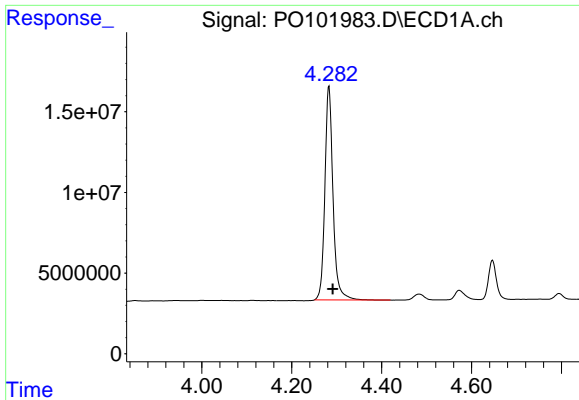
Manual Integrations
 APPROVED

Reviewed By :Yogesh Patel 02/22/2024
 Supervised By :Ankita Jodhani 02/22/2024

Integration File signal 1: autoint1.e
 Integration File signal 2: autoint2.e
 Quant Time: Feb 22 02:08:25 2024
 Quant Method : Z:\pestpcbsrv\HPCHEM1\ECD_O\methods\PO021024.M
 Quant Title : GC EXTRACTABLES
 QLast Update : Mon Feb 12 05:22:08 2024
 Response via : Initial Calibration
 Integrator: ChemStation

Volume Inj. : 2 µl
 Signal #1 Phase : ZB-MR1 Signal #2 Phase: ZB-MR2
 Signal #1 Info : 30Mx0.32mmx 0.50µ Signal #2 Info : 30M x 0.32mm x 0.25µm





#1 Tetrachloro-m-xylene

R.T.: 4.283 min
 Delta R.T.: -0.008 min
 Response: 166864010
 Conc: 54.11 ng/ml

Instrument :

ECD_O

ClientSampleId :

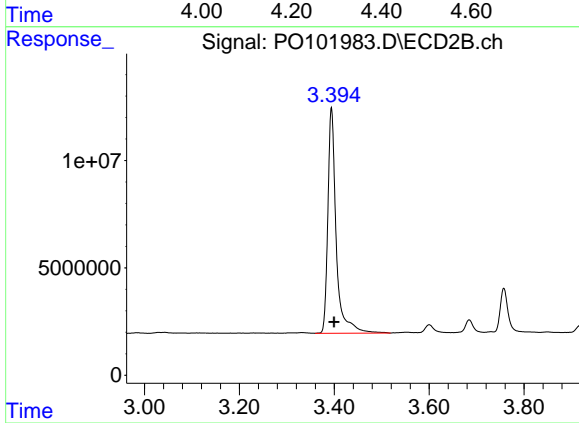
AR1660CCC500

Manual Integrations

APPROVED

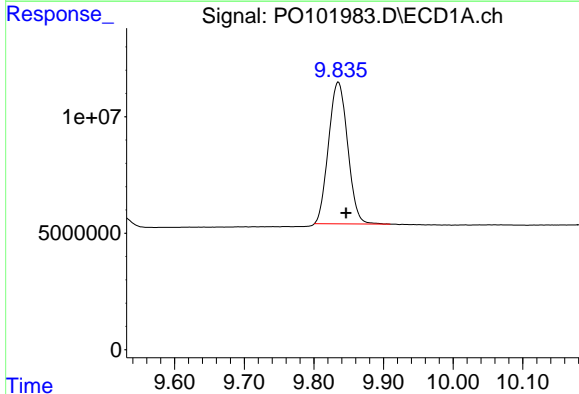
Reviewed By :Yogesh Patel 02/22/2024

Supervised By :Ankita Jodhani 02/22/2024



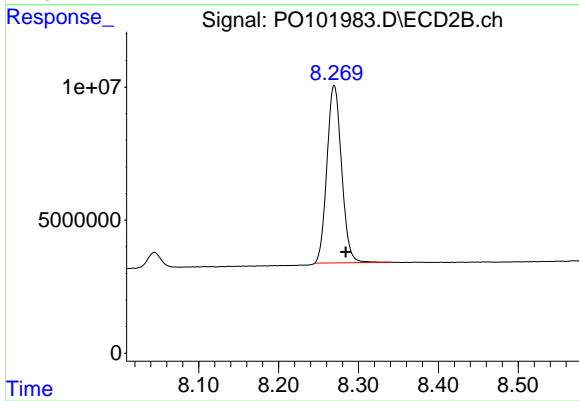
#1 Tetrachloro-m-xylene

R.T.: 3.394 min
 Delta R.T.: -0.006 min
 Response: 128603748
 Conc: 48.38 ng/ml



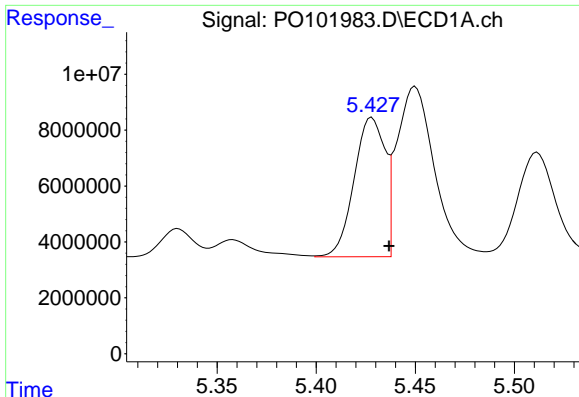
#2 Decachlorobiphenyl

R.T.: 9.835 min
 Delta R.T.: -0.011 min
 Response: 116052493
 Conc: 55.34 ng/ml



#2 Decachlorobiphenyl

R.T.: 8.270 min
 Delta R.T.: -0.014 min
 Response: 84955921
 Conc: 44.72 ng/ml



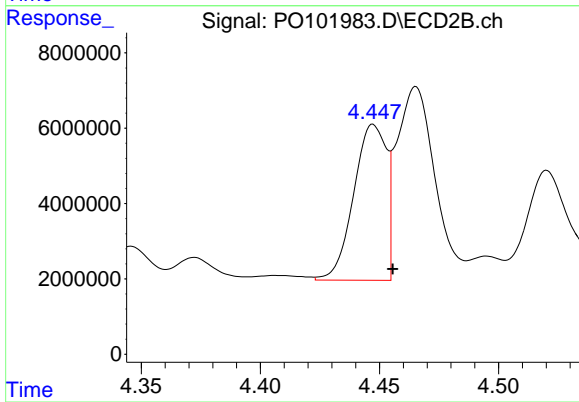
#3 AR-1016-1

R.T.: 5.428 min
 Delta R.T.: -0.009 min
 Response: 5407761
 Conc: 547.65 ng/ml

Instrument :
 ECD_O
 ClientSampleId :
 AR1660CCC500

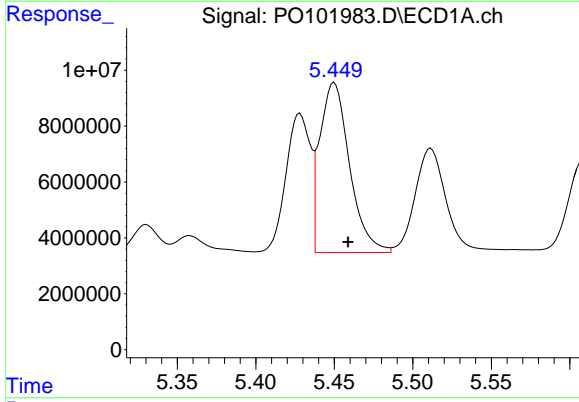
Manual Integrations
 APPROVED

Reviewed By :Yogesh Patel 02/22/2024
 Supervised By :Ankita Jodhani 02/22/2024



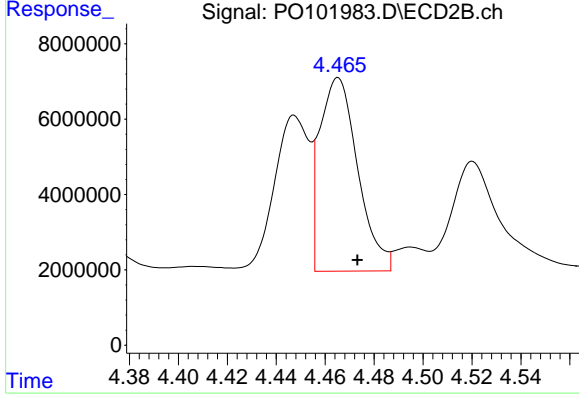
#3 AR-1016-1

R.T.: 4.447 min
 Delta R.T.: -0.008 min
 Response: 39493281
 Conc: 541.30 ng/ml



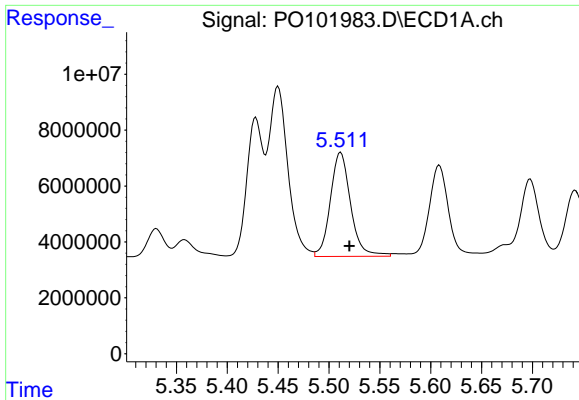
#4 AR-1016-2

R.T.: 5.450 min
 Delta R.T.: -0.009 min
 Response: 80266784
 Conc: 552.12 ng/ml



#4 AR-1016-2

R.T.: 4.465 min
 Delta R.T.: -0.008 min
 Response: 54434328
 Conc: 515.96 ng/ml m



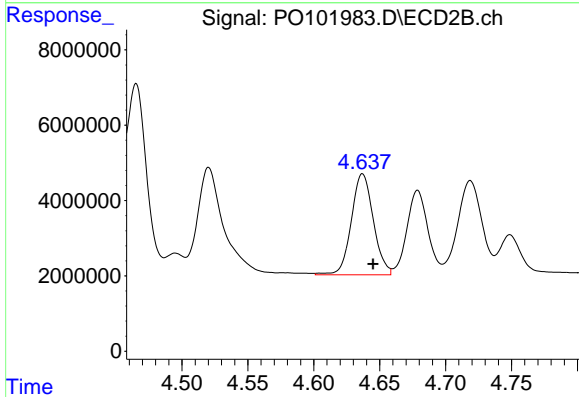
#5 AR-1016-3

R.T.: 5.511 min
 Delta R.T.: -0.009 min
 Response: 51612562
 Conc: 542.31 ng/ml

Instrument :
 ECD_O
 ClientSampleId :
 AR1660CCC500

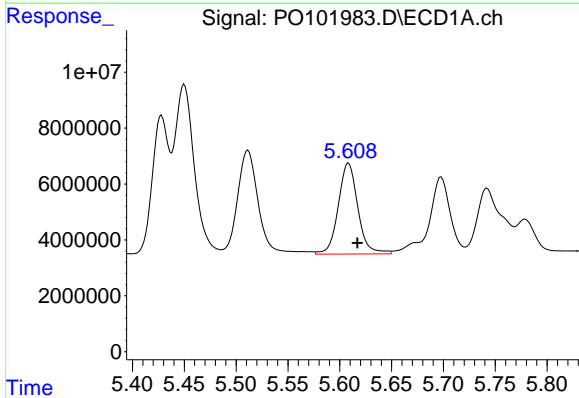
Manual Integrations
 APPROVED

Reviewed By :Yogesh Patel 02/22/2024
 Supervised By :Ankita Jodhani 02/22/2024



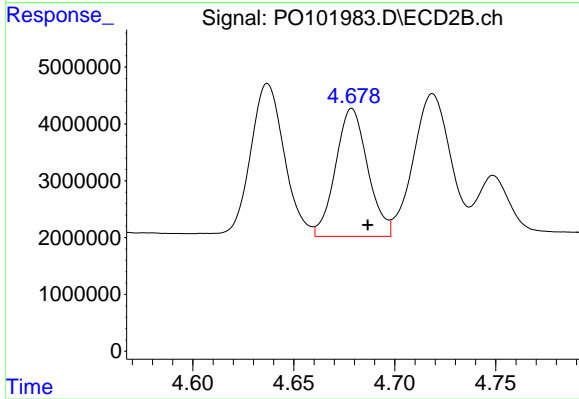
#5 AR-1016-3

R.T.: 4.637 min
 Delta R.T.: -0.008 min
 Response: 31193650
 Conc: 543.74 ng/ml m



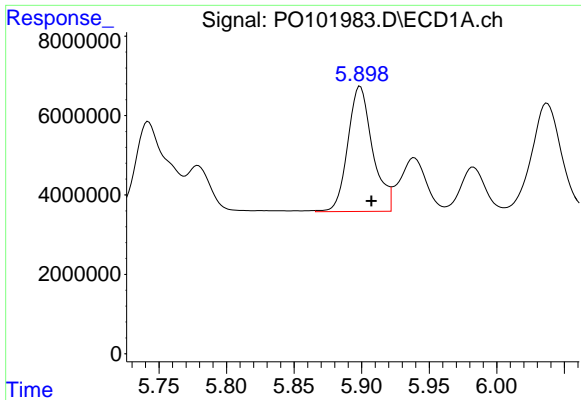
#6 AR-1016-4

R.T.: 5.608 min
 Delta R.T.: -0.009 min
 Response: 42852065
 Conc: 561.71 ng/ml



#6 AR-1016-4

R.T.: 4.678 min
 Delta R.T.: -0.008 min
 Response: 24857986
 Conc: 493.78 ng/ml m



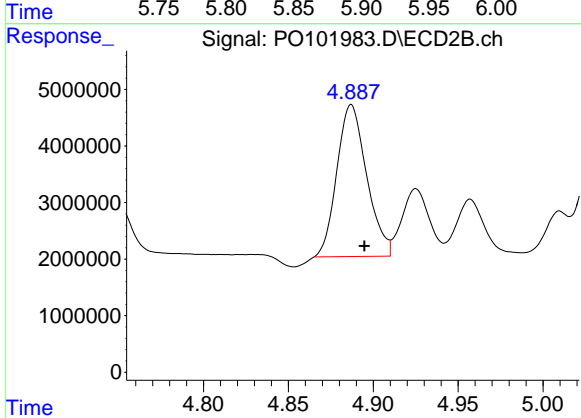
#7 AR-1016-5

R.T.: 5.898 min
 Delta R.T.: -0.009 min
 Response: 40495094
 Conc: 510.14 ng/ml

Instrument :
 ECD_O
 ClientSampleId :
 AR1660CCC500

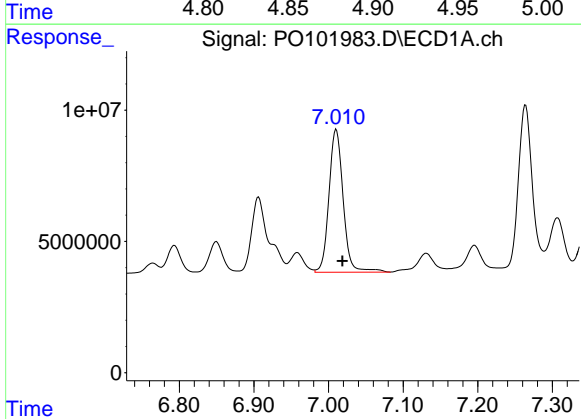
Manual Integrations
 APPROVED

Reviewed By :Yogesh Patel 02/22/2024
 Supervised By :Ankita Jodhani 02/22/2024



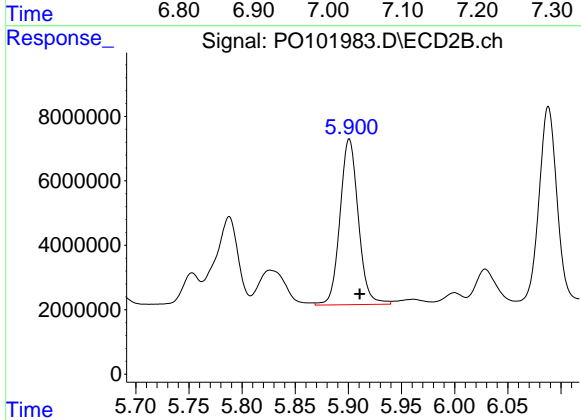
#7 AR-1016-5

R.T.: 4.887 min
 Delta R.T.: -0.008 min
 Response: 32835934
 Conc: 519.19 ng/ml



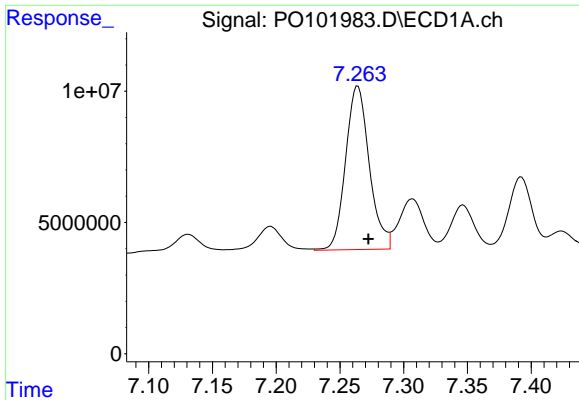
#31 AR-1260-1

R.T.: 7.010 min
 Delta R.T.: -0.008 min
 Response: 72127227
 Conc: 549.51 ng/ml



#31 AR-1260-1

R.T.: 5.901 min
 Delta R.T.: -0.010 min
 Response: 61697315
 Conc: 499.73 ng/ml



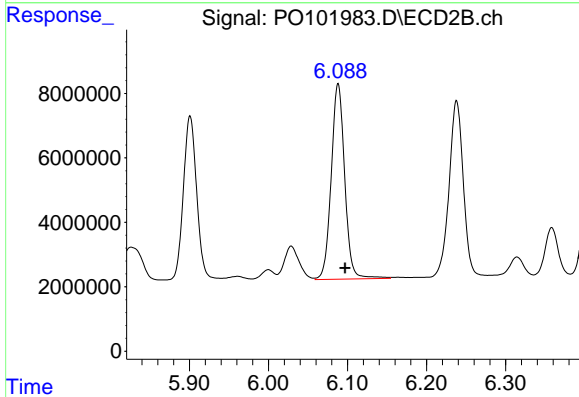
#32 AR-1260-2

R.T.: 7.264 min
 Delta R.T.: -0.008 min
 Response: 80430564
 Conc: 564.31 ng/ml

Instrument :
 ECD_O
 ClientSampleId :
 AR1660CCC500

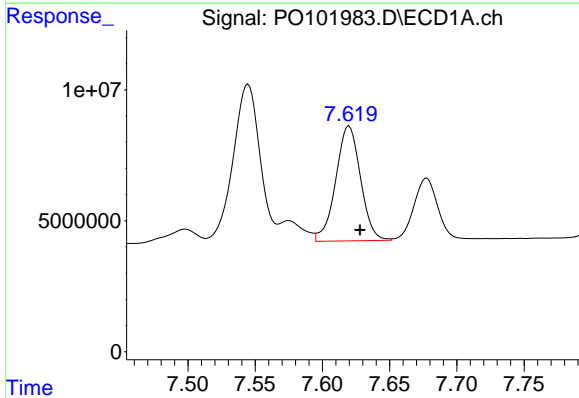
Manual Integrations
 APPROVED

Reviewed By :Yogesh Patel 02/22/2024
 Supervised By :Ankita Jodhani 02/22/2024



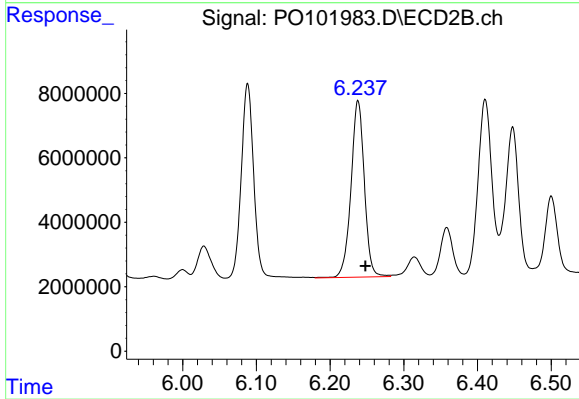
#32 AR-1260-2

R.T.: 6.088 min
 Delta R.T.: -0.009 min
 Response: 71969060
 Conc: 498.54 ng/ml



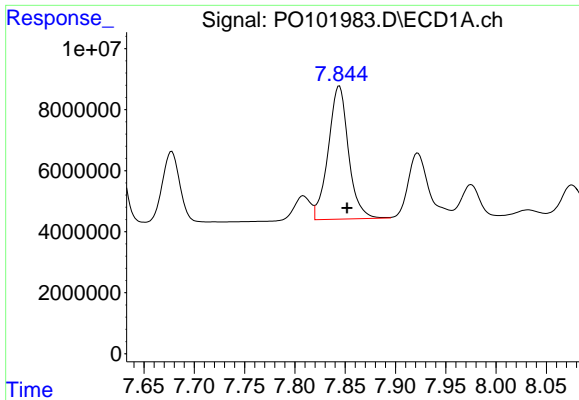
#33 AR-1260-3

R.T.: 7.620 min
 Delta R.T.: -0.008 min
 Response: 56075594
 Conc: 532.53 ng/ml



#33 AR-1260-3

R.T.: 6.238 min
 Delta R.T.: -0.010 min
 Response: 68971748
 Conc: 527.71 ng/ml



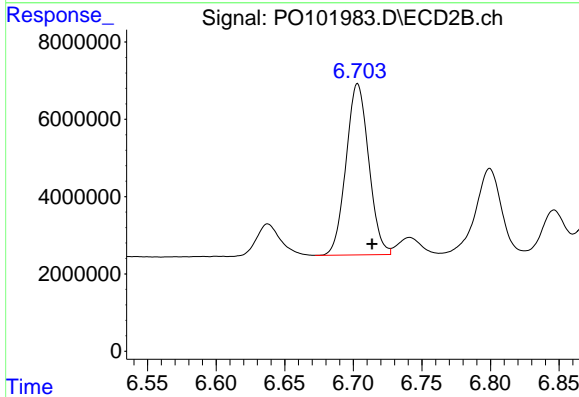
#34 AR-1260-4

R.T.: 7.844 min
 Delta R.T.: -0.008 min
 Response: 61138348
 Conc: 547.36 ng/ml

Instrument :
 ECD_O
 ClientSampleId :
 AR1660CCC500

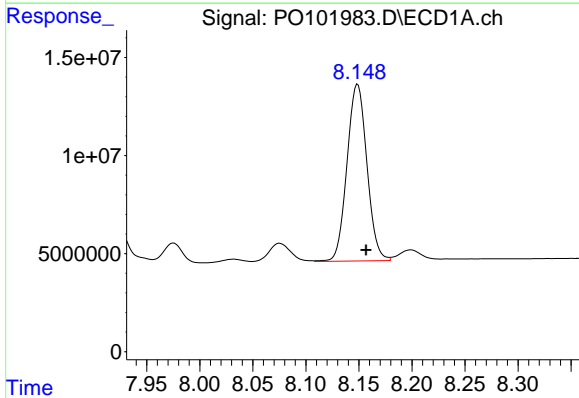
Manual Integrations
 APPROVED

Reviewed By :Yogesh Patel 02/22/2024
 Supervised By :Ankita Jodhani 02/22/2024



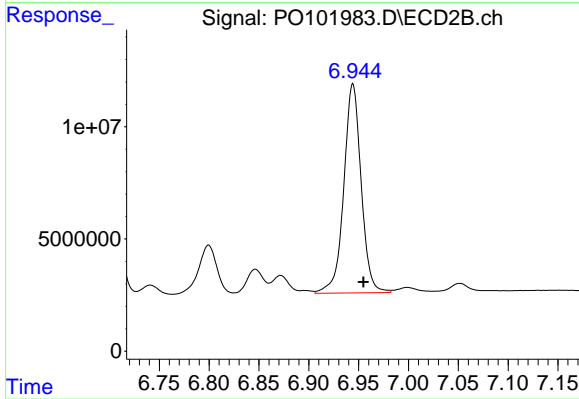
#34 AR-1260-4

R.T.: 6.703 min
 Delta R.T.: -0.010 min
 Response: 51040787
 Conc: 462.80 ng/ml



#35 AR-1260-5

R.T.: 8.149 min
 Delta R.T.: -0.008 min
 Response: 117510867
 Conc: 535.61 ng/ml



#35 AR-1260-5

R.T.: 6.944 min
 Delta R.T.: -0.011 min
 Response: 112994468
 Conc: 478.01 ng/ml