

Data Path : Z:\pestpcbsrv\HPCHEM1\ECD\_0\Data\P0022219\  
 Data File : P0053995.D  
 Signal(s) : Signal #1: ECD1A.CH Signal #2: ECD2B.CH  
 Acq On : 22 Feb 2019 16:38  
 Operator : SM/SJ  
 Sample : I.BLK  
 Misc :  
 ALS Vial : 2 Sample Multiplier: 1

Instrument :  
 ECD\_0  
 ClientSampleId :  
 I.BLK

Integration File signal 1: autoint1.e  
 Integration File signal 2: autoint2.e  
 Quant Time: Feb 22 21:48:40 2019  
 Quant Method : Z:\pestpcbsrv\HPCHEM1\ECD\_0\methods\P0021819.M  
 Quant Title : GC EXTRACTABLES  
 QLast Update : Tue Feb 19 03:40:07 2019  
 Response via : Initial Calibration  
 Integrator: ChemStation 6890 Scale Mode: Small noise peaks clipped

Volume Inj. : 2 µl  
 Signal #1 Phase : ZB-MR1 Signal #2 Phase: ZB-MR2  
 Signal #1 Info : 30Mx0.32mmx 0.50µ Signal #2 Info : 30M x 0.32mm x 0.25µm

Compound	RT#1	RT#2	Resp#1	Resp#2	ng/ml	ng/ml
-----						
System Monitoring Compounds						
1) SA Tetrachlo...	4.059	3.138	79131081	6437322	26.386	24.124
2) SA Decachlor...	9.402	7.718	26224861	6458799	20.884	21.554
Target Compounds						
20) L4 AR-1242-5	6.158	0.000	5501576	0	150.815	N.D. #
25) L5 AR-1248-5	6.158	0.000	5501576	0	90.925	N.D. #
27) L6 AR-1254-2	6.249	0.000	2581697	0	10.527	N.D. #
38) L8 AR-1262-3	8.191	0.000	3912006	0	117.781	N.D. #
39) L8 AR-1262-4	8.235	0.000	1058684	0	13.248	N.D. #
41) L9 AR-1268-1	8.191	0.000	3912006	0	20.699	N.D. #
42) L9 AR-1268-2	8.235	0.000	1058684	0	5.979	N.D. #
43) L9 AR-1268-3	8.431	0.000	16752650	0	106.640	N.D. #
-----						

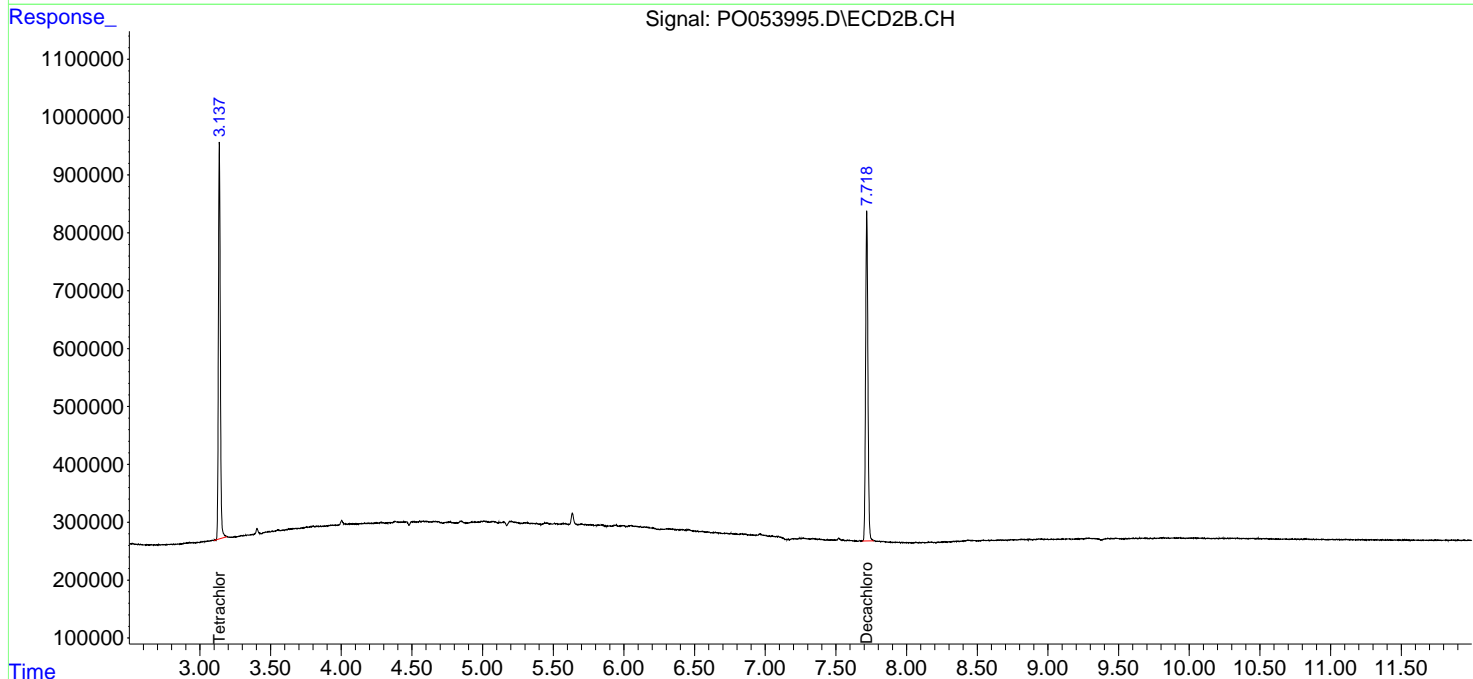
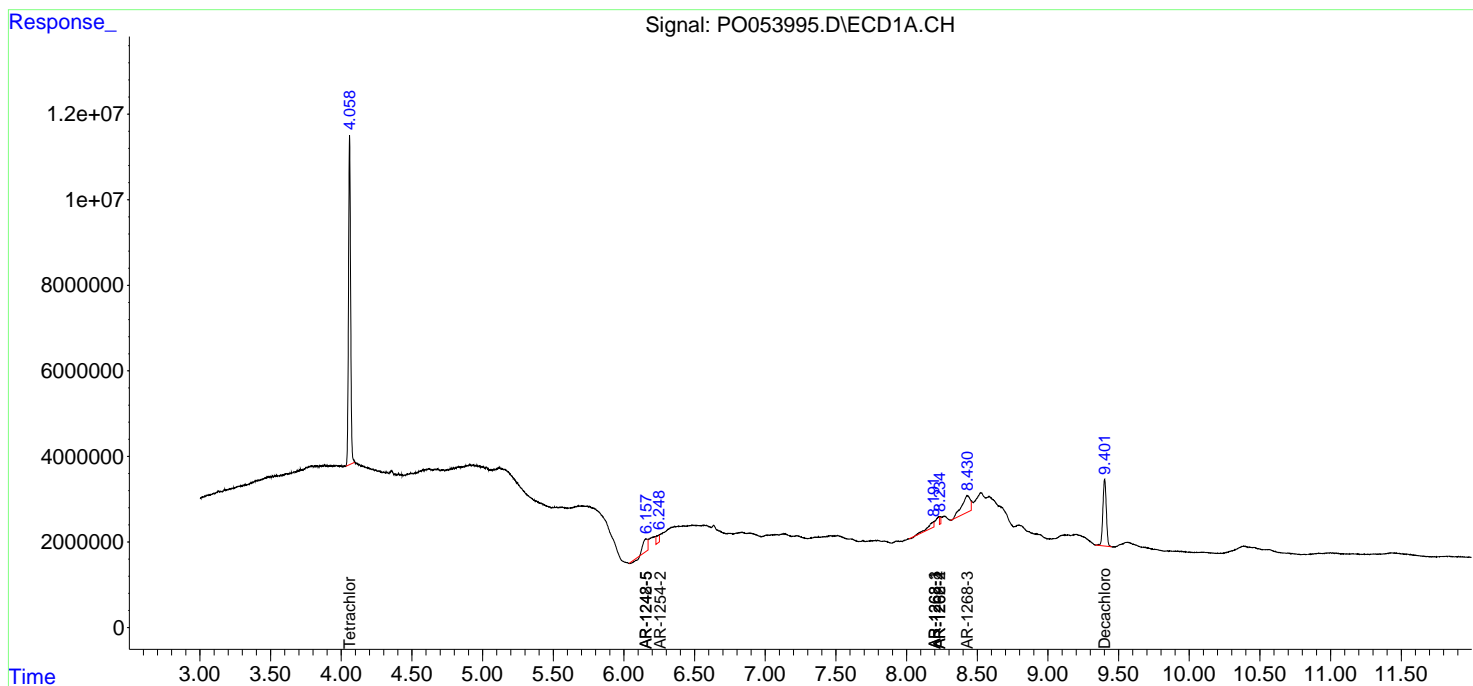
(f)=RT Delta > 1/2 Window (#)=Amounts differ by > 25% (m)=manual int.

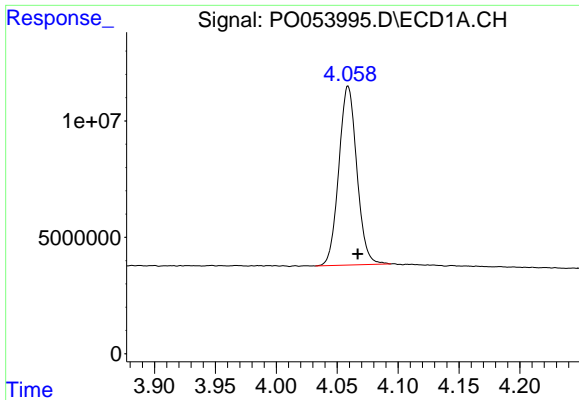
Data Path : Z:\pestpcbsrv\HPCHEM1\ECD\_0\Data\P0022219\  
 Data File : P0053995.D  
 Signal(s) : Signal #1: ECD1A.CH Signal #2: ECD2B.CH  
 Acq On : 22 Feb 2019 16:38  
 Operator : SM/SJ  
 Sample : I.BLK  
 Misc :  
 ALS Vial : 2 Sample Multiplier: 1

Instrument :  
 ECD\_O  
 ClientSampled :  
 I.BLK

Integration File signal 1: autoint1.e  
 Integration File signal 2: autoint2.e  
 Quant Time: Feb 22 21:48:40 2019  
 Quant Method : Z:\pestpcbsrv\HPCHEM1\ECD\_0\methods\P0021819.M  
 Quant Title : GC EXTRACTABLES  
 QLast Update : Tue Feb 19 03:40:07 2019  
 Response via : Initial Calibration  
 Integrator: ChemStation 6890 Scale Mode: Small noise peaks clipped

Volume Inj. : 2 µl  
 Signal #1 Phase : ZB-MR1 Signal #2 Phase: ZB-MR2  
 Signal #1 Info : 30Mx0.32mmx 0.50µ Signal #2 Info : 30M x 0.32mm x 0.25µm

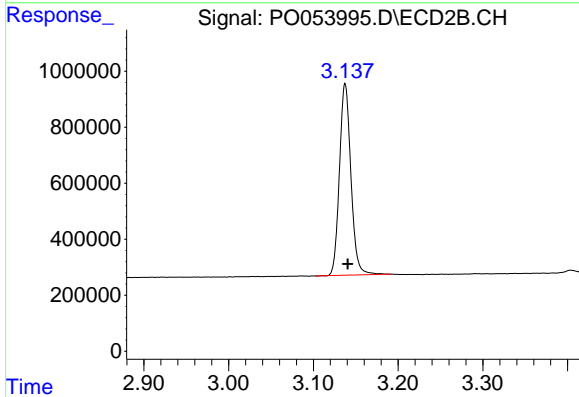




#1 Tetrachloro-m-xylene

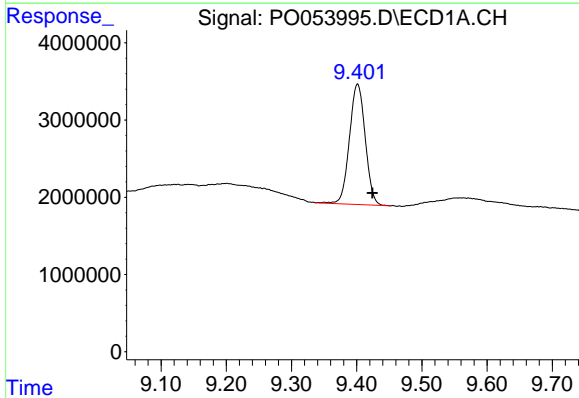
R.T.: 4.059 min  
 Delta R.T.: -0.008 min  
 Response: 79131081  
 Conc: 26.39 ng/ml

Instrument :  
 ECD\_O  
 ClientSampled :  
 I.BLK



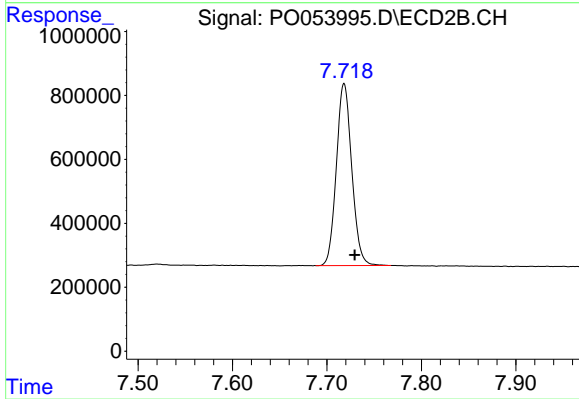
#1 Tetrachloro-m-xylene

R.T.: 3.138 min  
 Delta R.T.: -0.003 min  
 Response: 6437322  
 Conc: 24.12 ng/ml



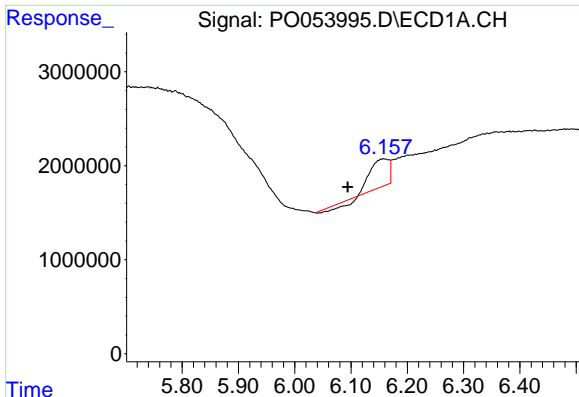
#2 Decachlorobiphenyl

R.T.: 9.402 min  
 Delta R.T.: -0.023 min  
 Response: 26224861  
 Conc: 20.88 ng/ml



#2 Decachlorobiphenyl

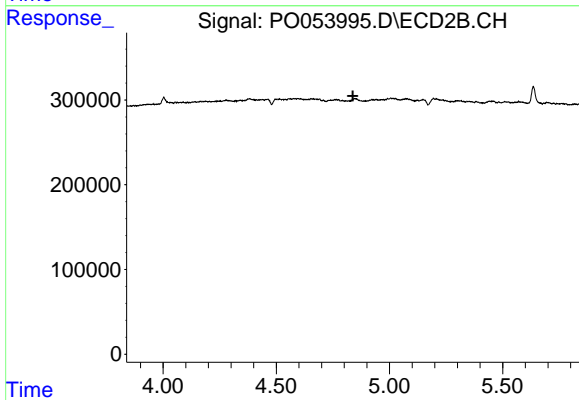
R.T.: 7.718 min  
 Delta R.T.: -0.011 min  
 Response: 6458799  
 Conc: 21.55 ng/ml



#20 AR-1242-5

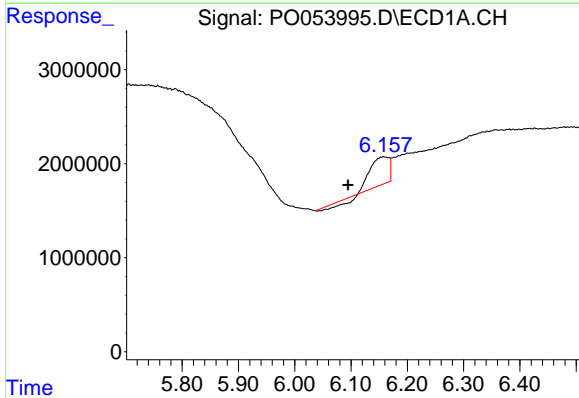
R.T.: 6.158 min  
 Delta R.T.: 0.063 min  
 Response: 5501576  
 Conc: 150.81 ng/ml

Instrument :  
 ECD\_O  
 ClientSampled :  
 I.BLK



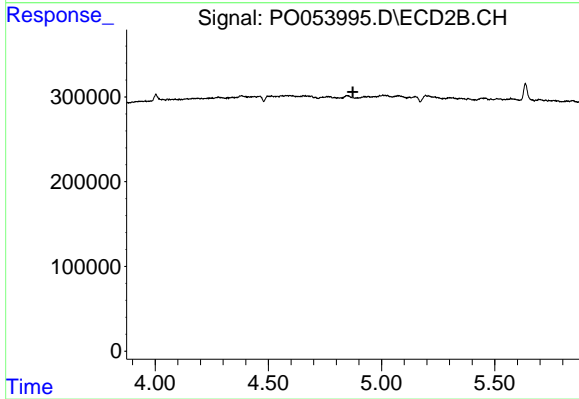
#20 AR-1242-5

R.T.: 0.000 min  
 Exp R.T. : 4.838 min  
 Response: 0  
 Conc: N.D.



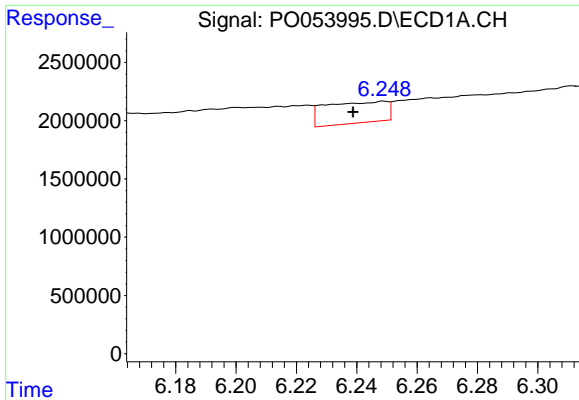
#25 AR-1248-5

R.T.: 6.158 min  
 Delta R.T.: 0.063 min  
 Response: 5501576  
 Conc: 90.93 ng/ml



#25 AR-1248-5

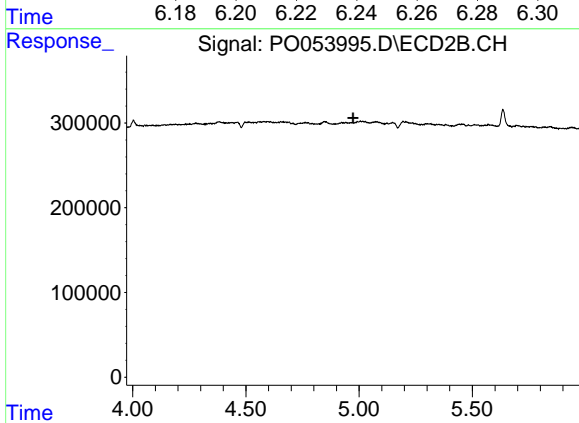
R.T.: 0.000 min  
 Exp R.T. : 4.874 min  
 Response: 0  
 Conc: N.D.



#27 AR-1254-2

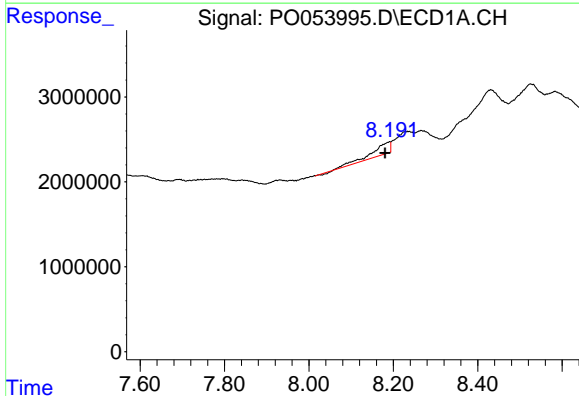
R.T.: 6.249 min  
 Delta R.T.: 0.010 min  
 Response: 2581697  
 Conc: 10.53 ng/ml

**Instrument :**  
 ECD\_O  
**ClientSampled :**  
 I.BLK



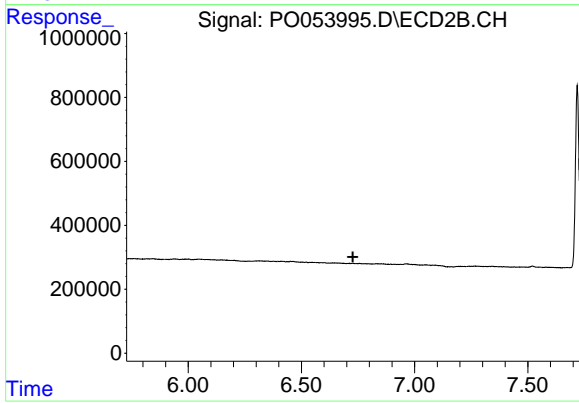
#27 AR-1254-2

R.T.: 0.000 min  
 Exp R.T. : 4.973 min  
 Response: 0  
 Conc: N.D.



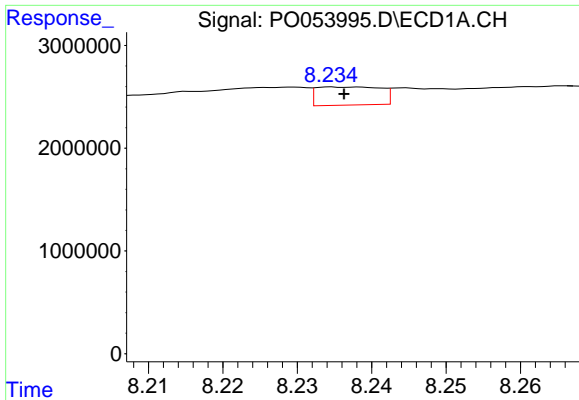
#38 AR-1262-3

R.T.: 8.191 min  
 Delta R.T.: 0.011 min  
 Response: 3912006  
 Conc: 117.78 ng/ml



#38 AR-1262-3

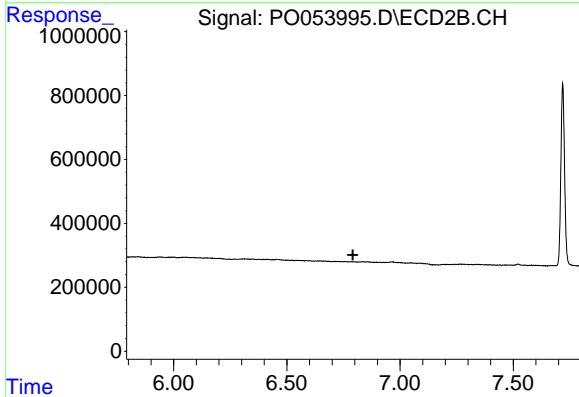
R.T.: 0.000 min  
 Exp R.T. : 6.727 min  
 Response: 0  
 Conc: N.D.



#39 AR-1262-4

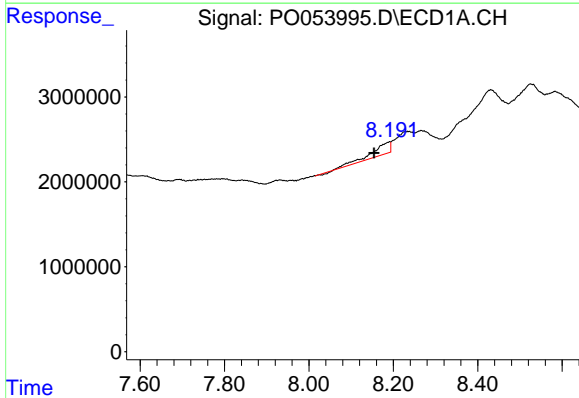
R.T.: 8.235 min  
 Delta R.T.: -0.002 min  
 Response: 1058684  
 Conc: 13.25 ng/ml

Instrument :  
 ECD\_O  
 ClientSampled :  
 I.BLK



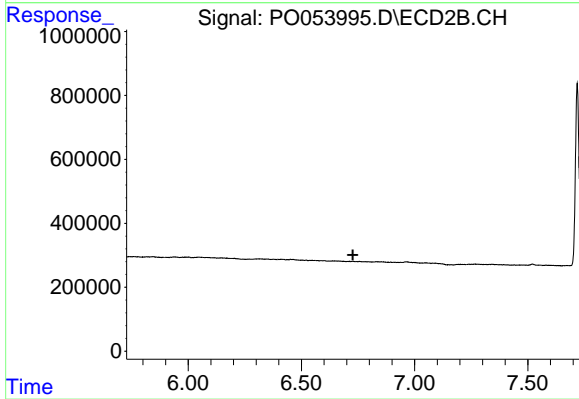
#39 AR-1262-4

R.T.: 0.000 min  
 Exp R.T. : 6.792 min  
 Response: 0  
 Conc: N.D.



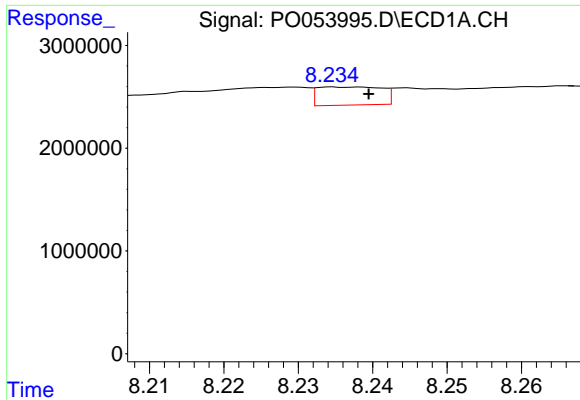
#41 AR-1268-1

R.T.: 8.191 min  
 Delta R.T.: 0.037 min  
 Response: 3912006  
 Conc: 20.70 ng/ml



#41 AR-1268-1

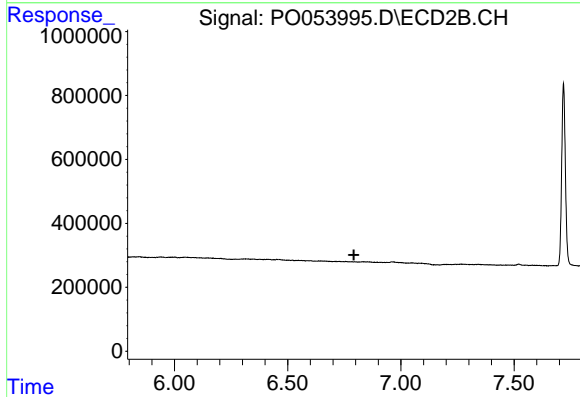
R.T.: 0.000 min  
 Exp R.T. : 6.727 min  
 Response: 0  
 Conc: N.D.



#42 AR-1268-2

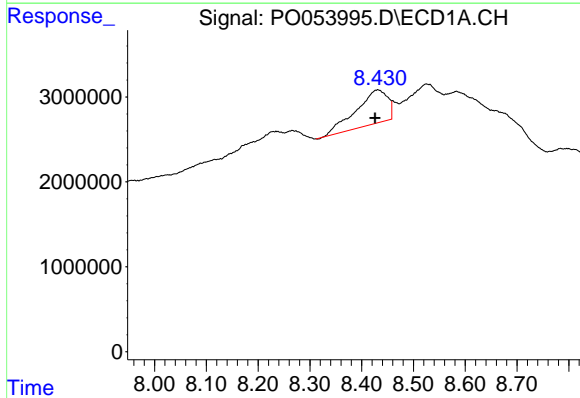
R.T.: 8.235 min  
 Delta R.T.: -0.005 min  
 Response: 1058684  
 Conc: 5.98 ng/ml

Instrument :  
 ECD\_O  
 ClientSampled :  
 I.BLK



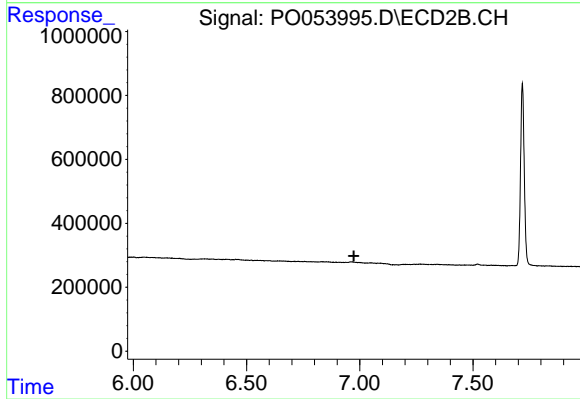
#42 AR-1268-2

R.T.: 0.000 min  
 Exp R.T. : 6.793 min  
 Response: 0  
 Conc: N.D.



#43 AR-1268-3

R.T.: 8.431 min  
 Delta R.T.: 0.005 min  
 Response: 16752650  
 Conc: 106.64 ng/ml



#43 AR-1268-3

R.T.: 0.000 min  
 Exp R.T. : 6.974 min  
 Response: 0  
 Conc: N.D.