

Data Path : Z:\pestpcbsrv\HPCHEM1\ECD\_0\Data\P0022222\  
 Data File : P0084833.D  
 Signal(s) : Signal #1: ECD1A.CH Signal #2: ECD2B.CH  
 Acq On : 22 Feb 2022 15:29  
 Operator : YP\AJ  
 Sample : N1626-03  
 Misc :  
 ALS Vial : 25 Sample Multiplier: 1

Instrument :  
 ECD\_0  
 ClientSampleId :  
 CC-A2

Integration File signal 1: autoint1.e  
 Integration File signal 2: autoint2.e  
 Quant Time: Feb 23 00:43:25 2022  
 Quant Method : Z:\pestpcbsrv\HPCHEM1\ECD\_0\methods\P0021422.M  
 Quant Title : GC EXTRACTABLES  
 QLast Update : Mon Feb 14 17:50:29 2022  
 Response via : Initial Calibration  
 Integrator: ChemStation 6890 Scale Mode: Small noise peaks clipped

Volume Inj. : 2 µl  
 Signal #1 Phase : ZB-MR1 Signal #2 Phase: ZB-MR2  
 Signal #1 Info : 30Mx0.32mmx 0.50µ Signal #2 Info : 30M x 0.32mm x 0.25µm

Compound	RT#1	RT#2	Resp#1	Resp#2	ng/ml	ng/ml
-----						
System Monitoring Compounds						
1) SA Tetrachlo...	4.509	3.598	3416639	805411	17.377	17.859
2) SA Decachlor...	10.436	8.627	3426350	632385	27.612	17.347 #
Target Compounds						
26) L6 AR-1254-1	6.568	5.493	4926391	2028262	761.584	792.423
27) L6 AR-1254-2	6.789	5.642	9836274	2115372	995.615	945.106
28) L6 AR-1254-3	7.161	6.047	13306200	4065492	1284.457	1116.898
29) L6 AR-1254-4	7.450	6.277	12695103	2995969	1733.993	1333.374
30) L6 AR-1254-5	7.875	6.697	18966471	6164638	2356.220	1885.850
-----						

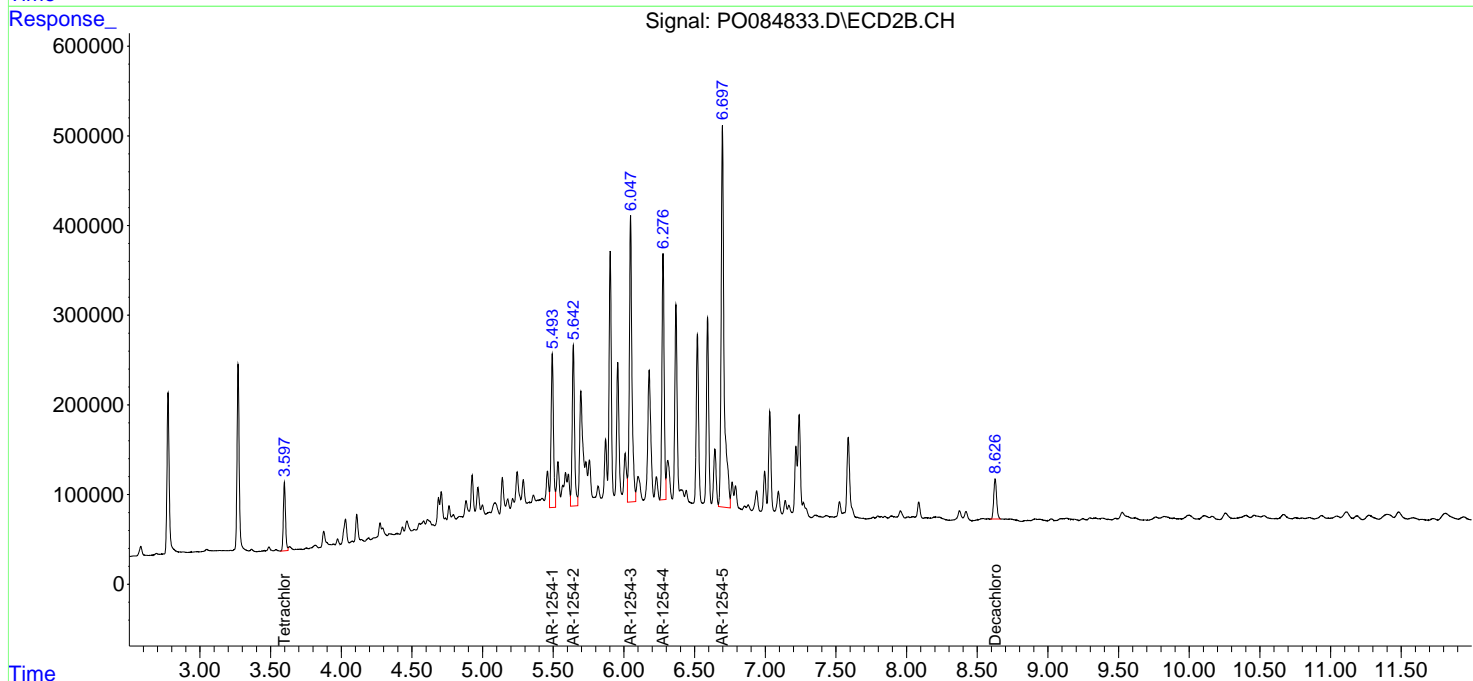
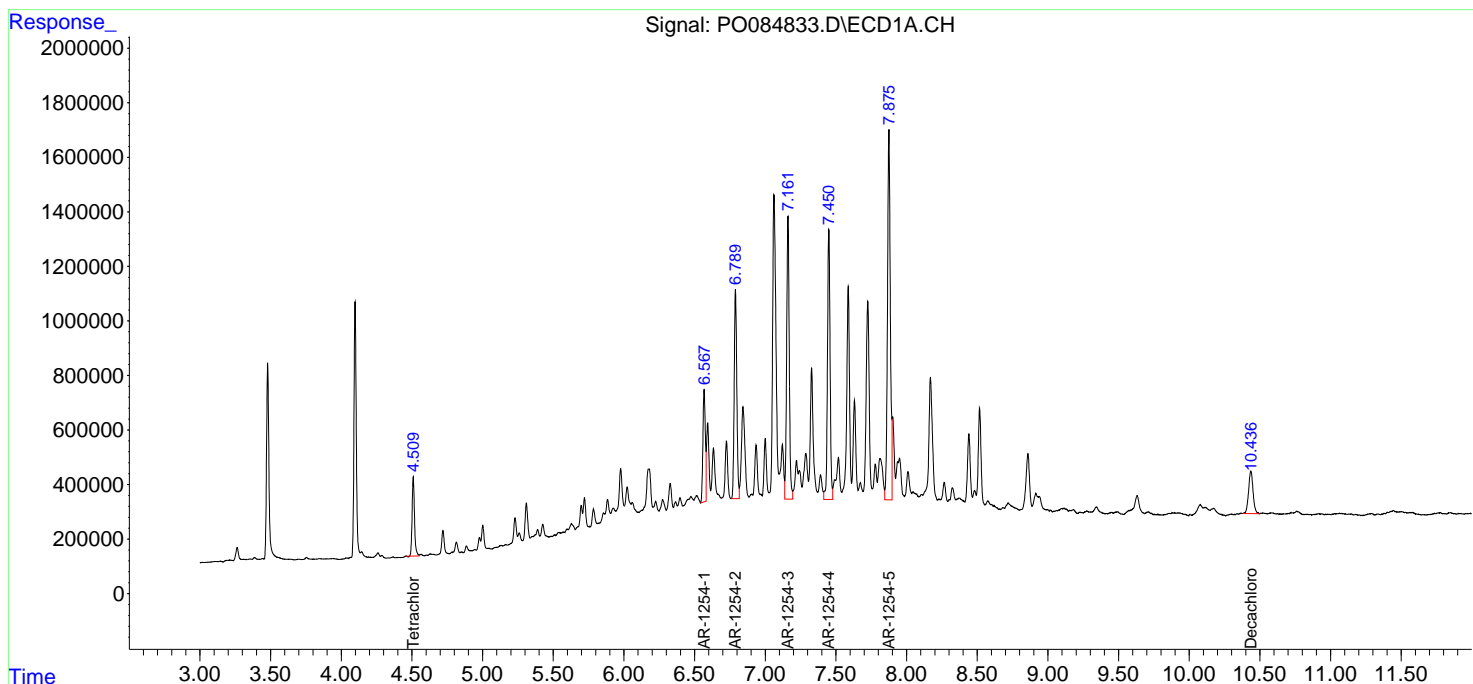
(f)=RT Delta > 1/2 Window (#)=Amounts differ by > 25% (m)=manual int.

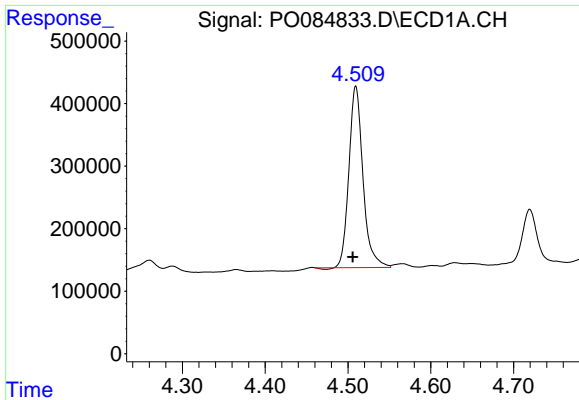
Data Path : Z:\pestpcbsrv\HPCHEM1\ECD\_O\Data\P0022222\  
 Data File : P0084833.D  
 Signal(s) : Signal #1: ECD1A.CH Signal #2: ECD2B.CH  
 Acq On : 22 Feb 2022 15:29  
 Operator : YP\AJ  
 Sample : N1626-03  
 Misc :  
 ALS Vial : 25 Sample Multiplier: 1

Instrument :  
 ECD\_O  
 ClientSampleId :  
 CC-A2

Integration File signal 1: autoint1.e  
 Integration File signal 2: autoint2.e  
 Quant Time: Feb 23 00:43:25 2022  
 Quant Method : Z:\pestpcbsrv\HPCHEM1\ECD\_O\methods\P0021422.M  
 Quant Title : GC EXTRACTABLES  
 QLast Update : Mon Feb 14 17:50:29 2022  
 Response via : Initial Calibration  
 Integrator: ChemStation 6890 Scale Mode: Small noise peaks clipped

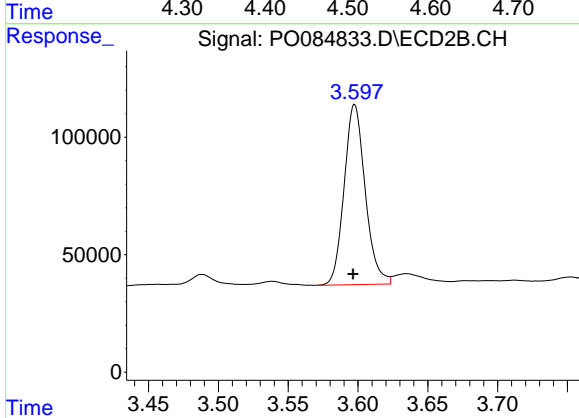
Volume Inj. : 2 µl  
 Signal #1 Phase : ZB-MR1 Signal #2 Phase: ZB-MR2  
 Signal #1 Info : 30Mx0.32mmx 0.50µ Signal #2 Info : 30M x 0.32mm x 0.25µm



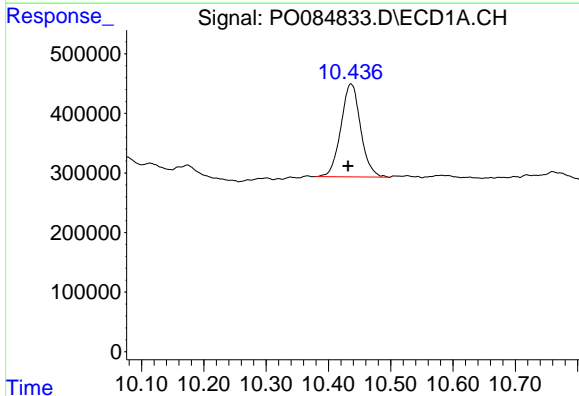


#1 Tetrachloro-m-xylene  
 R.T.: 4.509 min  
 Delta R.T.: 0.003 min  
 Response: 3416639  
 Conc: 17.38 ng/ml

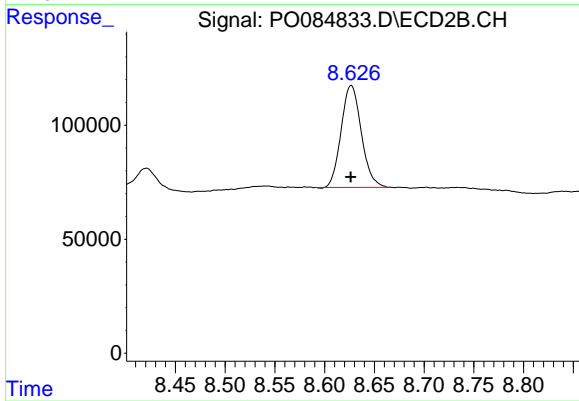
Instrument :  
 ECD\_O  
 ClientSampleId :  
 CC-A2



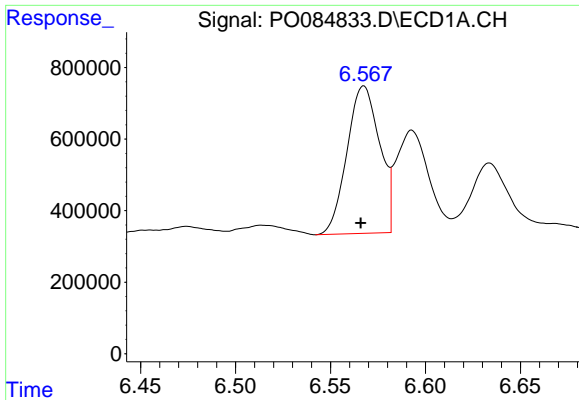
#1 Tetrachloro-m-xylene  
 R.T.: 3.598 min  
 Delta R.T.: 0.001 min  
 Response: 805411  
 Conc: 17.86 ng/ml



#2 Decachlorobiphenyl  
 R.T.: 10.436 min  
 Delta R.T.: 0.005 min  
 Response: 3426350  
 Conc: 27.61 ng/ml



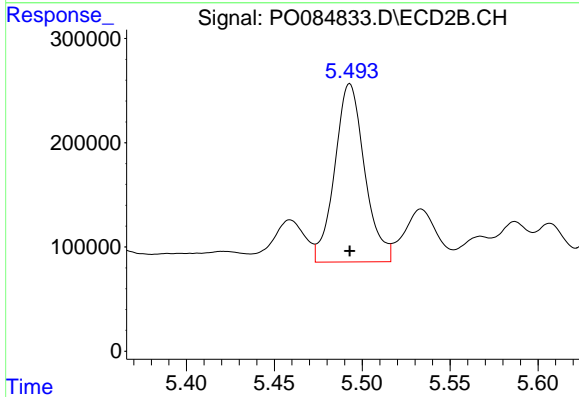
#2 Decachlorobiphenyl  
 R.T.: 8.627 min  
 Delta R.T.: 0.000 min  
 Response: 632385  
 Conc: 17.35 ng/ml



#26 AR-1254-1

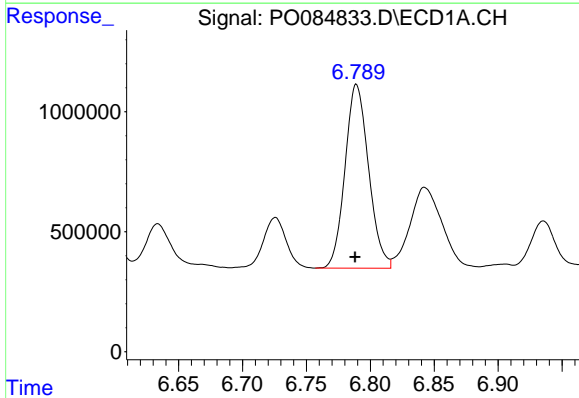
R.T.: 6.568 min  
 Delta R.T.: 0.002 min  
 Response: 4926391  
 Conc: 761.58 ng/ml

Instrument :  
 ECD\_O  
 ClientSampleId :  
 CC-A2



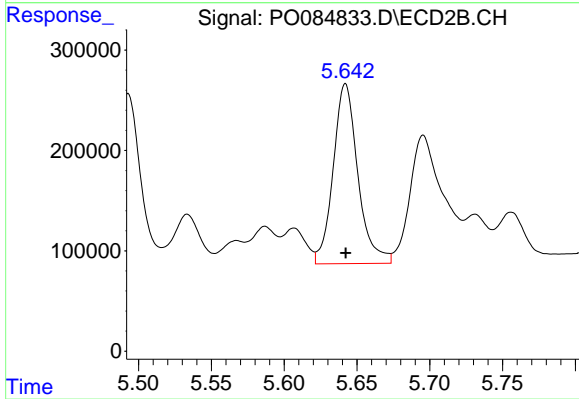
#26 AR-1254-1

R.T.: 5.493 min  
 Delta R.T.: 0.000 min  
 Response: 2028262  
 Conc: 792.42 ng/ml



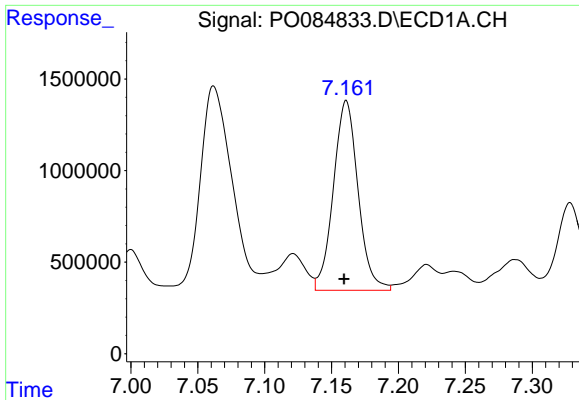
#27 AR-1254-2

R.T.: 6.789 min  
 Delta R.T.: 0.001 min  
 Response: 9836274  
 Conc: 995.61 ng/ml



#27 AR-1254-2

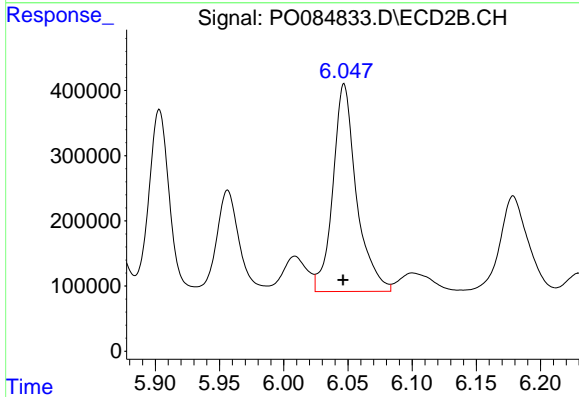
R.T.: 5.642 min  
 Delta R.T.: 0.000 min  
 Response: 2115372  
 Conc: 945.11 ng/ml



#28 AR-1254-3

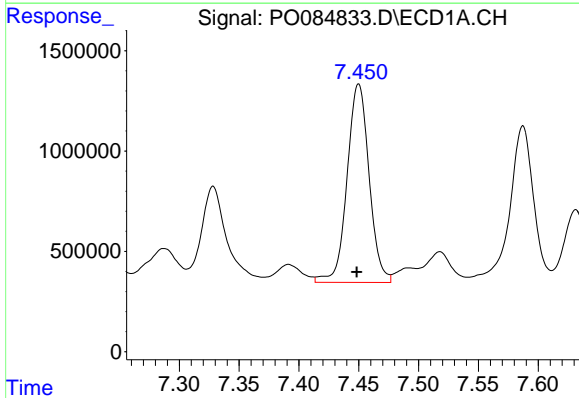
R.T.: 7.161 min  
 Delta R.T.: 0.002 min  
 Response: 13306200  
 Conc: 1284.46 ng/ml

Instrument :  
 ECD\_O  
 ClientSampleId :  
 CC-A2



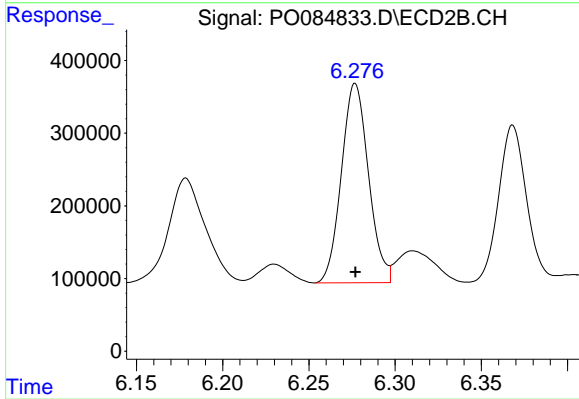
#28 AR-1254-3

R.T.: 6.047 min  
 Delta R.T.: 0.000 min  
 Response: 4065492  
 Conc: 1116.90 ng/ml



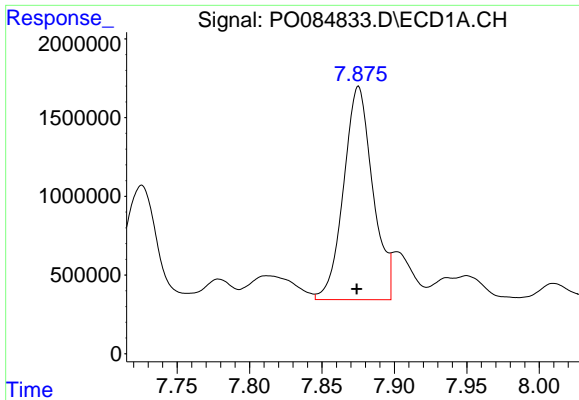
#29 AR-1254-4

R.T.: 7.450 min  
 Delta R.T.: 0.002 min  
 Response: 12695103  
 Conc: 1733.99 ng/ml



#29 AR-1254-4

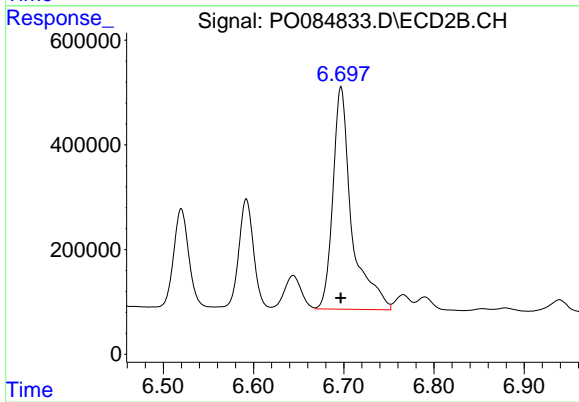
R.T.: 6.277 min  
 Delta R.T.: 0.000 min  
 Response: 2995969  
 Conc: 1333.37 ng/ml



#30 AR-1254-5

R.T.: 7.875 min  
Delta R.T.: 0.001 min  
Response: 18966471  
Conc: 2356.22 ng/m

Instrument :  
ECD\_O  
ClientSampleId :  
CC-A2



#30 AR-1254-5

R.T.: 6.697 min  
Delta R.T.: 0.000 min  
Response: 6164638  
Conc: 1885.85 ng/ml