

Data Path : Z:\pestpcbsrv\HPCHEM1\ECD_0\Data\P0022222\
 Data File : P0084838.D
 Signal(s) : Signal #1: ECD1A.CH Signal #2: ECD2B.CH
 Acq On : 22 Feb 2022 17:21
 Operator : YP\AJ
 Sample : PB142858BL
 Misc :
 ALS Vial : 28 Sample Multiplier: 1

Instrument :
 ECD_0
 ClientSampleId :
 PB142858BL

Integration File signal 1: autoint1.e
 Integration File signal 2: autoint2.e
 Quant Time: Feb 23 00:47:10 2022
 Quant Method : Z:\pestpcbsrv\HPCHEM1\ECD_0\methods\P0021422.M
 Quant Title : GC EXTRACTABLES
 QLast Update : Mon Feb 14 17:50:29 2022
 Response via : Initial Calibration
 Integrator: ChemStation 6890 Scale Mode: Small noise peaks clipped

Volume Inj. : 2 µl
 Signal #1 Phase : ZB-MR1 Signal #2 Phase: ZB-MR2
 Signal #1 Info : 30Mx0.32mmx 0.50µ Signal #2 Info : 30M x 0.32mm x 0.25µm

Compound	RT#1	RT#2	Resp#1	Resp#2	ng/ml	ng/ml

System Monitoring Compounds						
1) SA Tetrachlo...	4.510	3.599	4337550	916191	22.060	20.315
2) SA Decachlor...	10.433	8.623	2632710	654384	21.216	17.951

Target Compounds

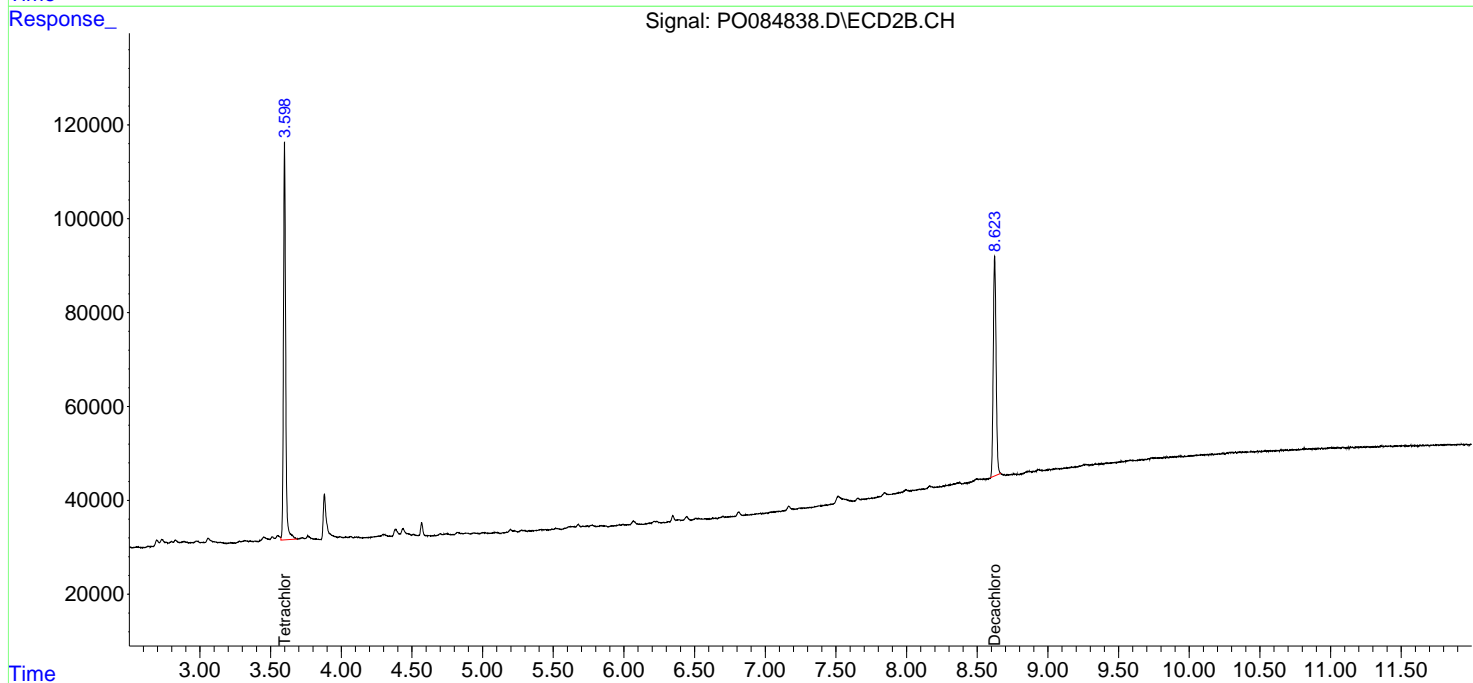
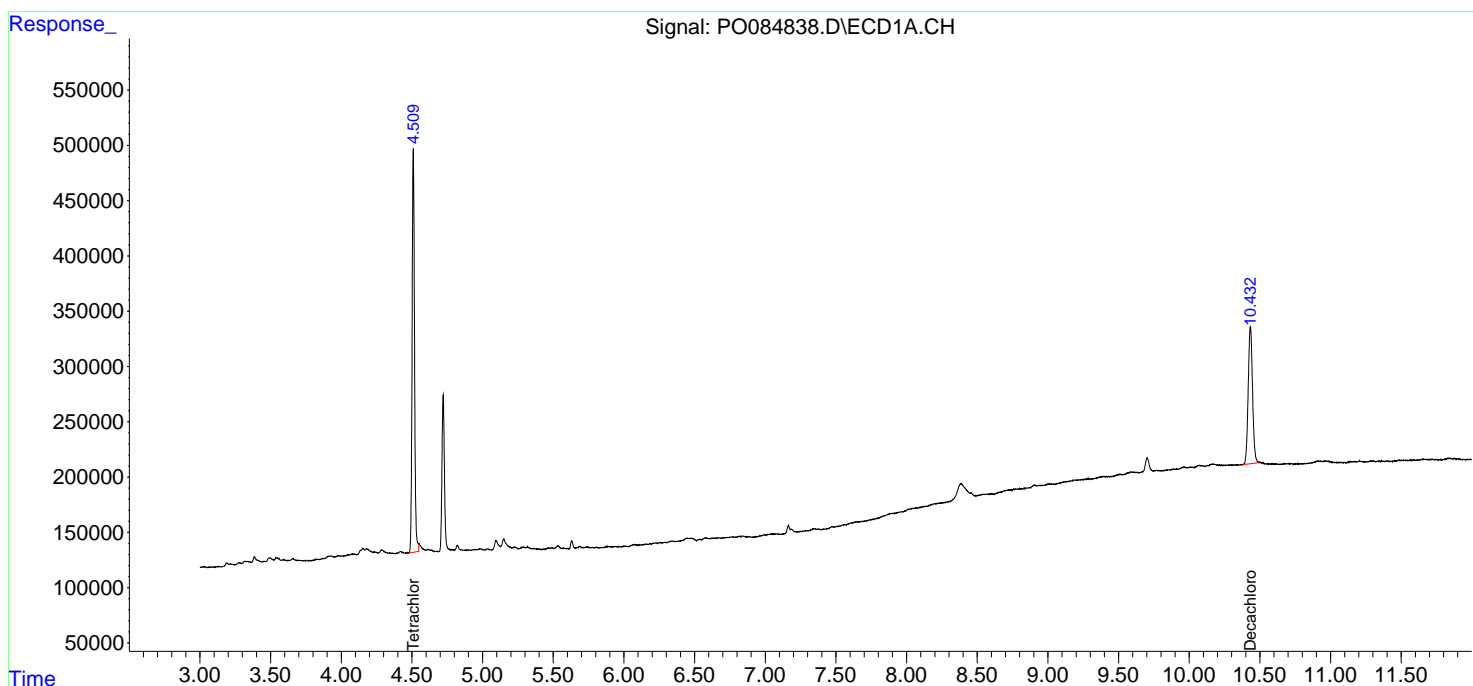
(f)=RT Delta > 1/2 Window (#)=Amounts differ by > 25% (m)=manual int.

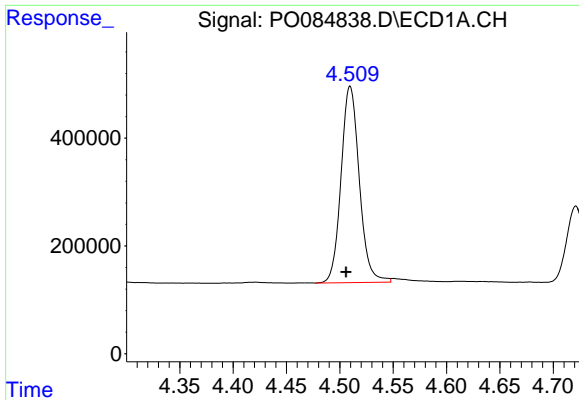
Data Path : Z:\pestpcbsrv\HPCHEM1\ECD_0\Data\P0022222\
 Data File : P0084838.D
 Signal(s) : Signal #1: ECD1A.CH Signal #2: ECD2B.CH
 Acq On : 22 Feb 2022 17:21
 Operator : YP\AJ
 Sample : PB142858BL
 Misc :
 ALS Vial : 28 Sample Multiplier: 1

Instrument :
 ECD_O
 ClientSampleId :
 PB142858BL

Integration File signal 1: autoint1.e
 Integration File signal 2: autoint2.e
 Quant Time: Feb 23 00:47:10 2022
 Quant Method : Z:\pestpcbsrv\HPCHEM1\ECD_0\methods\P0021422.M
 Quant Title : GC EXTRACTABLES
 QLast Update : Mon Feb 14 17:50:29 2022
 Response via : Initial Calibration
 Integrator: ChemStation 6890 Scale Mode: Small noise peaks clipped

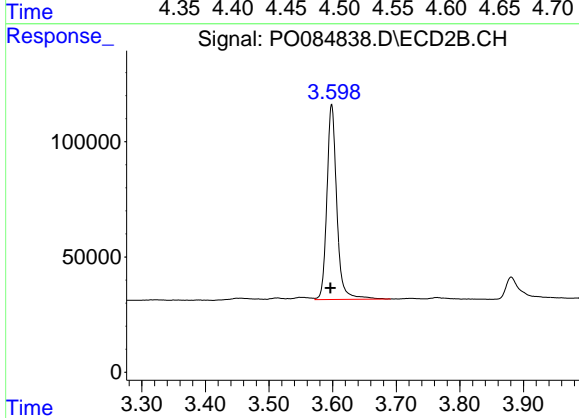
Volume Inj. : 2 µl
 Signal #1 Phase : ZB-MR1 Signal #2 Phase: ZB-MR2
 Signal #1 Info : 30Mx0.32mmx 0.50µ Signal #2 Info : 30M x 0.32mm x 0.25µm



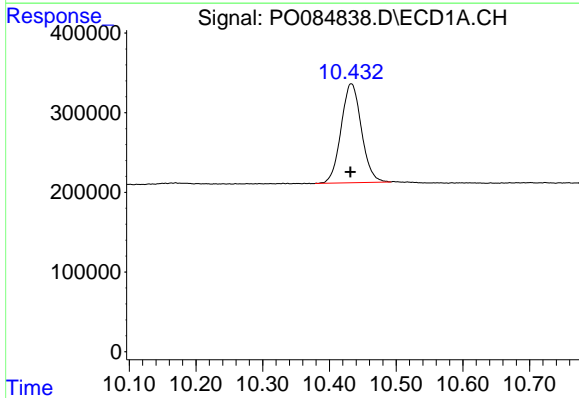


#1 Tetrachloro-m-xylene
 R.T.: 4.510 min
 Delta R.T.: 0.004 min
 Response: 4337550
 Conc: 22.06 ng/ml

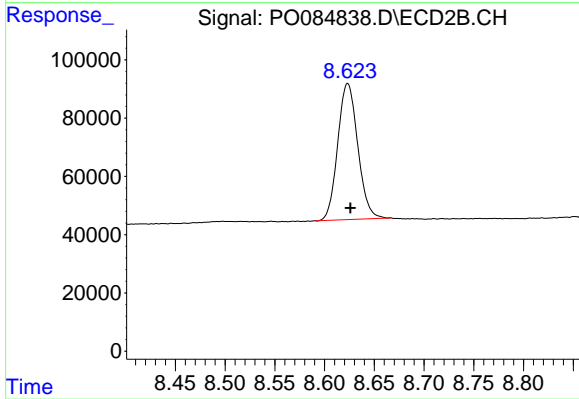
Instrument :
 ECD_O
 ClientSampleId :
 PB142858BL



#1 Tetrachloro-m-xylene
 R.T.: 3.599 min
 Delta R.T.: 0.002 min
 Response: 916191
 Conc: 20.32 ng/ml



#2 Decachlorobiphenyl
 R.T.: 10.433 min
 Delta R.T.: 0.001 min
 Response: 2632710
 Conc: 21.22 ng/ml



#2 Decachlorobiphenyl
 R.T.: 8.623 min
 Delta R.T.: -0.003 min
 Response: 654384
 Conc: 17.95 ng/ml