

Data Path : Z:\pestpcbsrv\HPCHEM1\ECD_0\Data\P0022222\
 Data File : P0084844.D
 Signal(s) : Signal #1: ECD1A.CH Signal #2: ECD2B.CH
 Acq On : 22 Feb 2022 18:56
 Operator : YP\AJ
 Sample : N1632-01
 Misc :
 ALS Vial : 34 Sample Multiplier: 1

Instrument :
 ECD_0
ClientSampleId :
 20220090-BERKELEY-2-ELUTRIATE

Integration File signal 1: autoint1.e
 Integration File signal 2: autoint2.e
 Quant Time: Feb 23 00:51:41 2022
 Quant Method : Z:\pestpcbsrv\HPCHEM1\ECD_0\methods\P0021422.M
 Quant Title : GC EXTRACTABLES
 QLast Update : Mon Feb 14 17:50:29 2022
 Response via : Initial Calibration
 Integrator: ChemStation 6890 Scale Mode: Small noise peaks clipped

Volume Inj. : 2 µl
 Signal #1 Phase : ZB-MR1 Signal #2 Phase: ZB-MR2
 Signal #1 Info : 30Mx0.32mmx 0.50µ Signal #2 Info : 30M x 0.32mm x 0.25µm

Compound	RT#1	RT#2	Resp#1	Resp#2	ng/ml	ng/ml

System Monitoring Compounds						
1) SA Tetrachlo...	4.512	3.601	5365977	1064220	27.291	23.598
2) SA Decachlor...	10.435	8.625	1930915	483392	15.561	13.260

Target Compounds

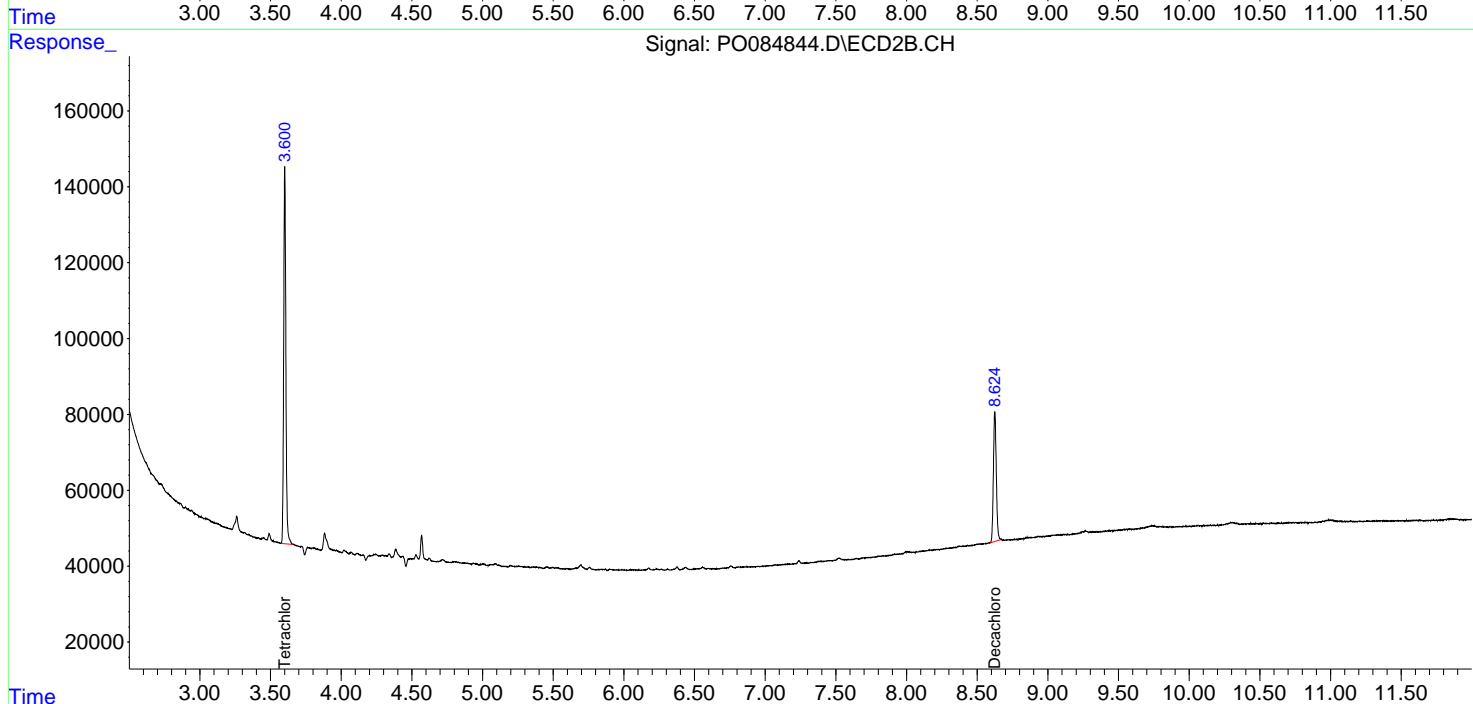
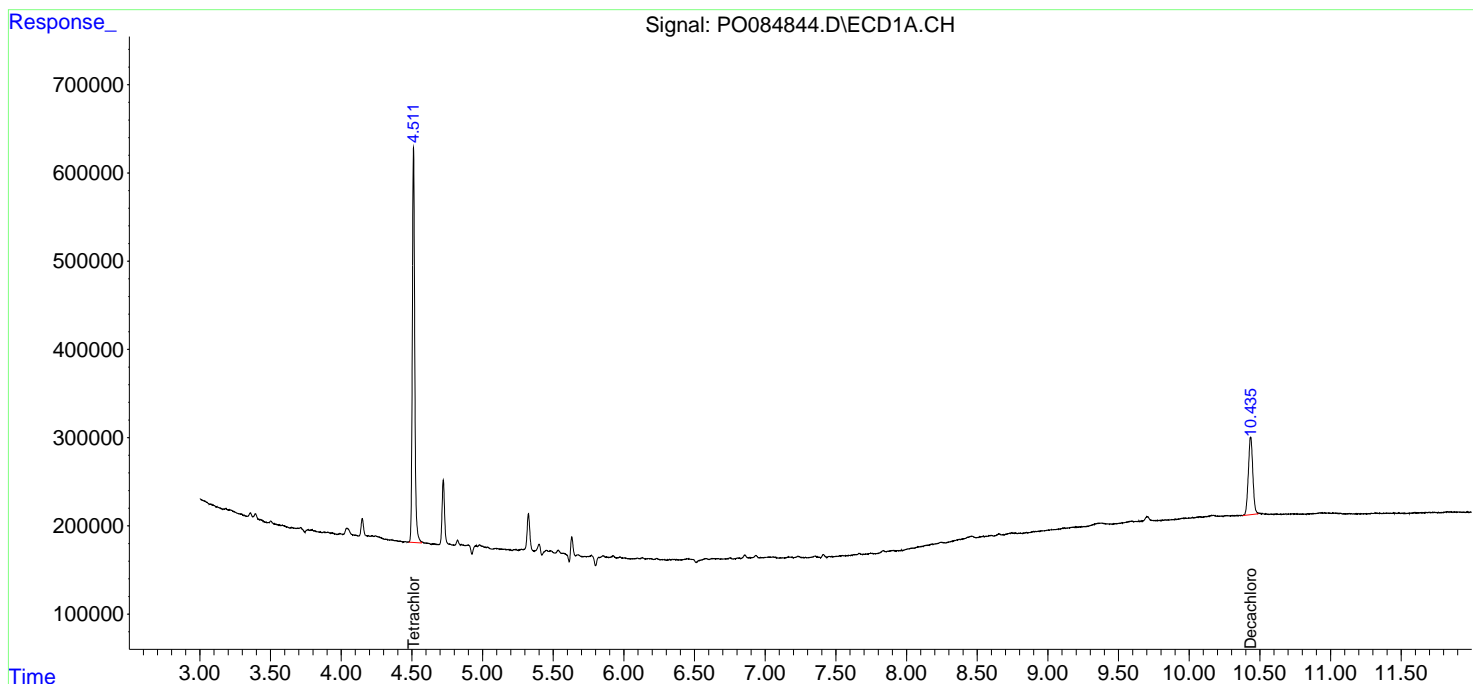
(f)=RT Delta > 1/2 Window (#)=Amounts differ by > 25% (m)=manual int.

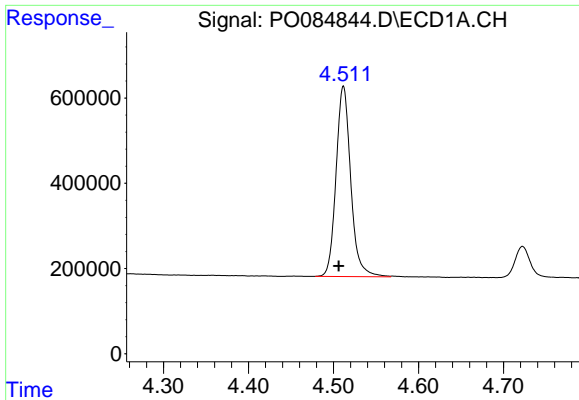
Data Path : Z:\pestpcbsrv\HPCHEM1\ECD_0\Data\P0022222\
 Data File : P0084844.D
 Signal(s) : Signal #1: ECD1A.CH Signal #2: ECD2B.CH
 Acq On : 22 Feb 2022 18:56
 Operator : YP\AJ
 Sample : N1632-01
 Misc :
 ALS Vial : 34 Sample Multiplier: 1

Instrument :
 ECD_0
ClientSampleId :
 20220090-BERKELEY-2-ELUTRIATE

Integration File signal 1: autoint1.e
 Integration File signal 2: autoint2.e
 Quant Time: Feb 23 00:51:41 2022
 Quant Method : Z:\pestpcbsrv\HPCHEM1\ECD_0\methods\P0021422.M
 Quant Title : GC EXTRACTABLES
 QLast Update : Mon Feb 14 17:50:29 2022
 Response via : Initial Calibration
 Integrator: ChemStation 6890 Scale Mode: Small noise peaks clipped

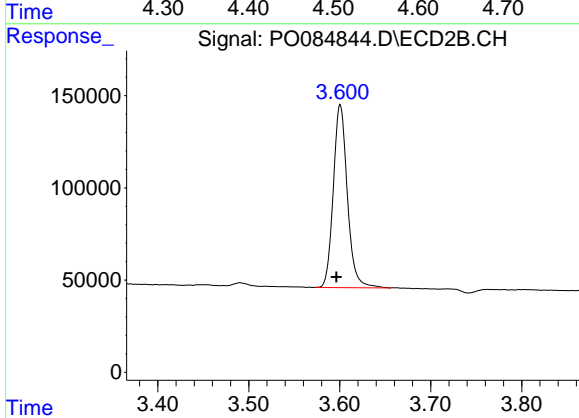
Volume Inj. : 2 µl
 Signal #1 Phase : ZB-MR1 Signal #2 Phase: ZB-MR2
 Signal #1 Info : 30Mx0.32mmx 0.50µ Signal #2 Info : 30M x 0.32mm x 0.25µm



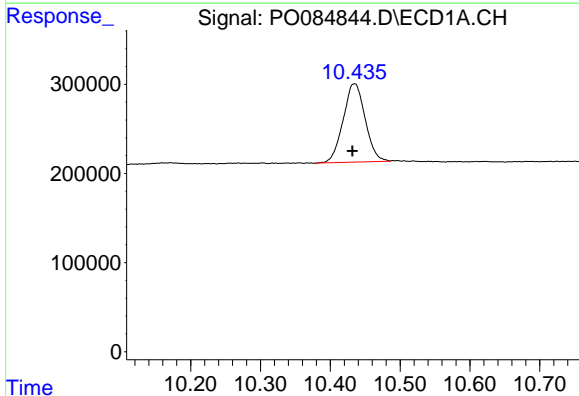


#1 Tetrachloro-m-xylene
 R.T.: 4.512 min
 Delta R.T.: 0.006 min
 Response: 5365977
 Conc: 27.29 ng/ml

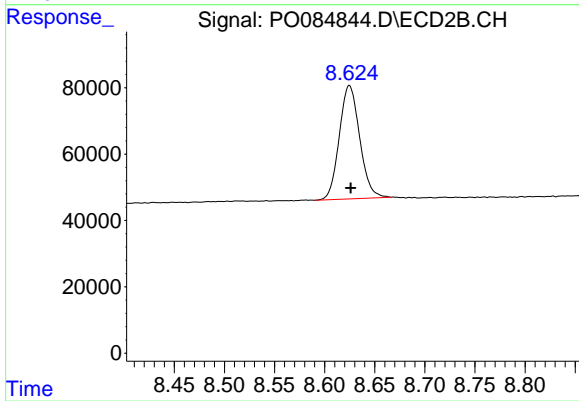
Instrument :
 ECD_O
 ClientSampleId :
 20220090-BERKELEY-2-ELUTRIATE



#1 Tetrachloro-m-xylene
 R.T.: 3.601 min
 Delta R.T.: 0.004 min
 Response: 1064220
 Conc: 23.60 ng/ml



#2 Decachlorobiphenyl
 R.T.: 10.435 min
 Delta R.T.: 0.004 min
 Response: 1930915
 Conc: 15.56 ng/ml



#2 Decachlorobiphenyl
 R.T.: 8.625 min
 Delta R.T.: -0.001 min
 Response: 483392
 Conc: 13.26 ng/ml