

Data Path : Z:\pestpcbsrv\HPCHEM1\ECD_0\Data\P0022222\
 Data File : P0084847.D
 Signal(s) : Signal #1: ECD1A.CH Signal #2: ECD2B.CH
 Acq On : 22 Feb 2022 20:23
 Operator : YP\AJ
 Sample : AR1660CCC500
 Misc :
 ALS Vial : 3 Sample Multiplier: 1

Instrument :
 ECD_0
 ClientSampleId :
 AR1660CCC500

Integration File signal 1: autoint1.e
 Integration File signal 2: autoint2.e
 Quant Time: Feb 23 00:54:01 2022
 Quant Method : Z:\pestpcbsrv\HPCHEM1\ECD_0\methods\P0021422.M
 Quant Title : GC EXTRACTABLES
 QLast Update : Mon Feb 14 17:50:29 2022
 Response via : Initial Calibration
 Integrator: ChemStation 6890 Scale Mode: Small noise peaks clipped

Volume Inj. : 2 µl
 Signal #1 Phase : ZB-MR1 Signal #2 Phase: ZB-MR2
 Signal #1 Info : 30Mx0.32mmx 0.50µ Signal #2 Info : 30M x 0.32mm x 0.25µm

Compound	RT#1	RT#2	Resp#1	Resp#2	ng/ml	ng/ml

System Monitoring Compounds						
1) SA Tetrachlo...	4.508	3.598	11795378	2240139	59.990	49.672
2) SA Decachlor...	10.431	8.625	6949321	1654438	56.003	45.384
Target Compounds						
3) L1 AR-1016-1	5.698	4.688	4029348	845981	622.349	492.778
4) L1 AR-1016-2	5.720	4.706	5773141	1213531	620.989	501.427
5) L1 AR-1016-3	5.783	4.882	3511508	654254	624.325	497.854
6) L1 AR-1016-4	5.884	4.925	2921655	548664	629.770	495.203
7) L1 AR-1016-5	6.184	5.138	2780765	689764	620.626	498.373
31) L7 AR-1260-1	7.325	6.176	4245566	1163025	613.461	479.996
32) L7 AR-1260-2	7.586	6.366	4778168	1371189	584.538	473.379
33) L7 AR-1260-3	7.950	6.519	3559669	1286173	580.117	472.642
34) L7 AR-1260-4	8.181	6.993	4013377	1071253	575.039	465.533
35) L7 AR-1260-5	8.513	7.237	8013932	2431205	582.259	459.272

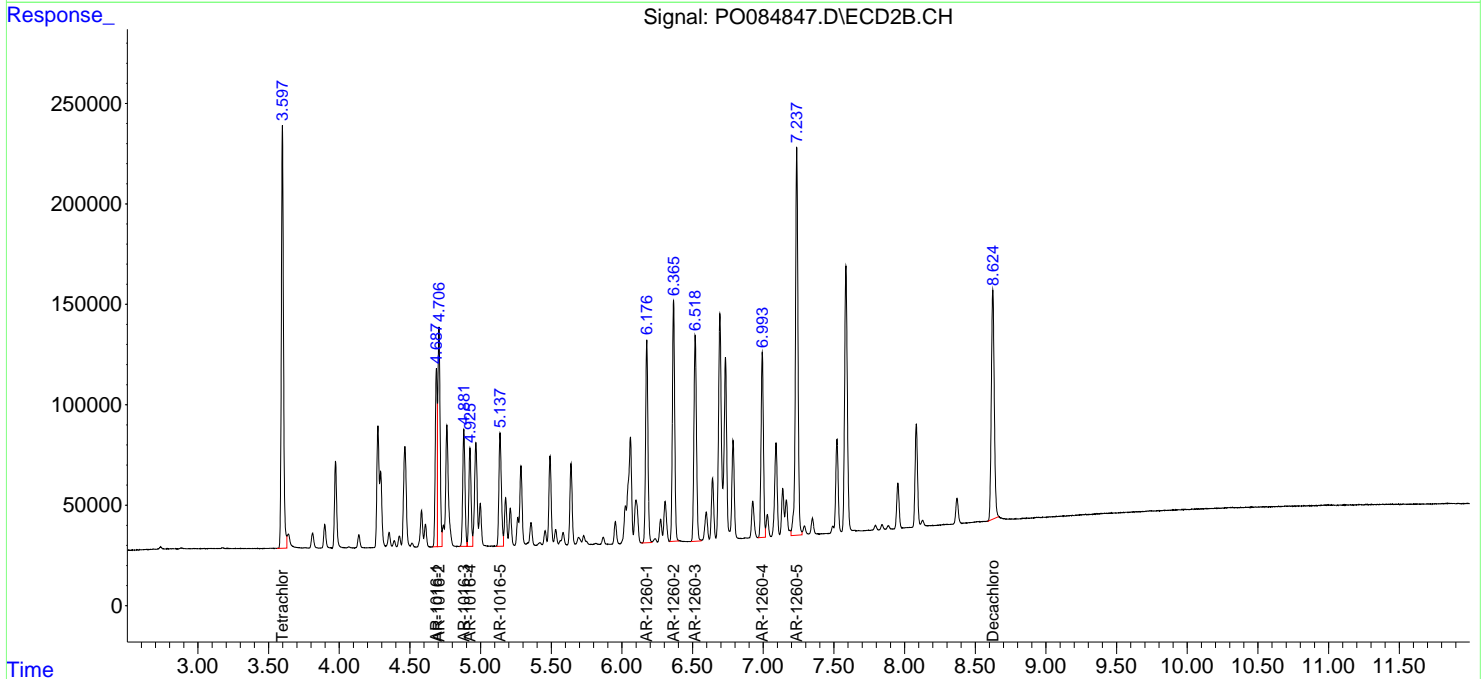
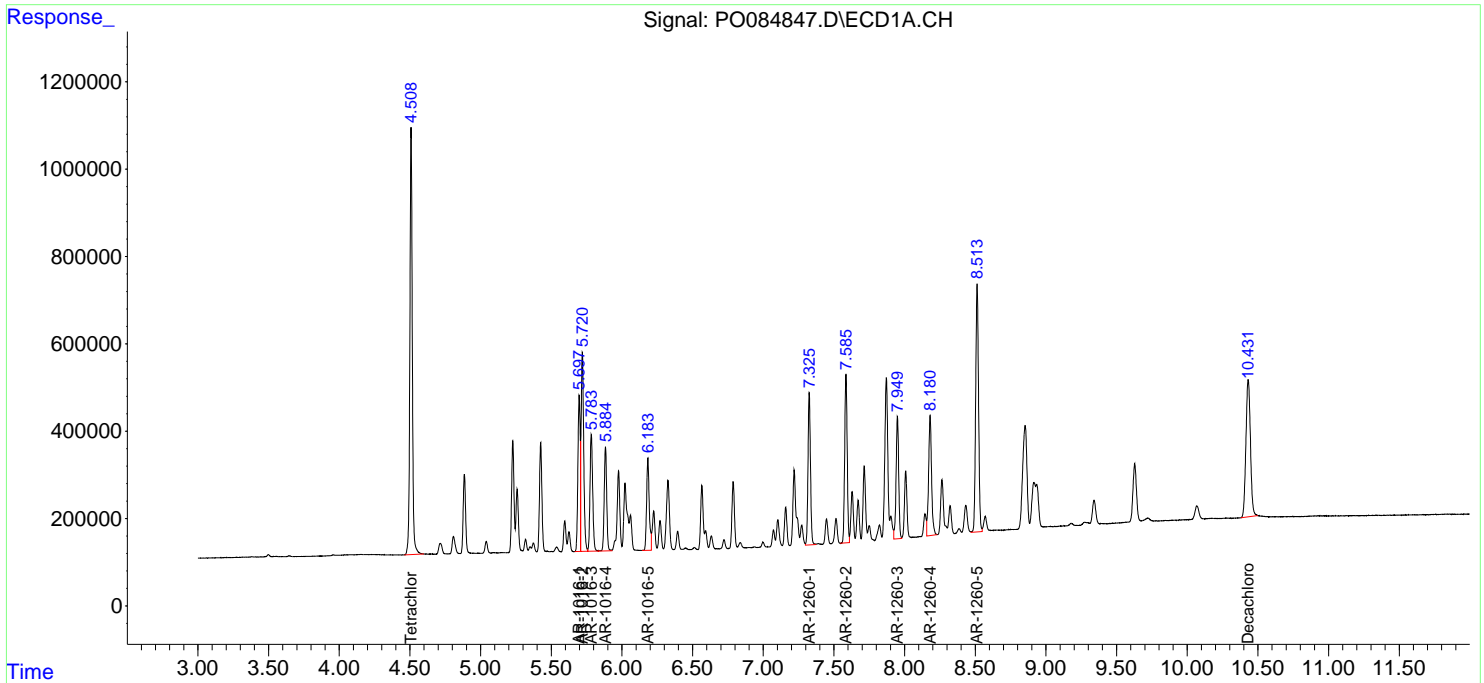
(f)=RT Delta > 1/2 Window (#)=Amounts differ by > 25% (m)=manual int.

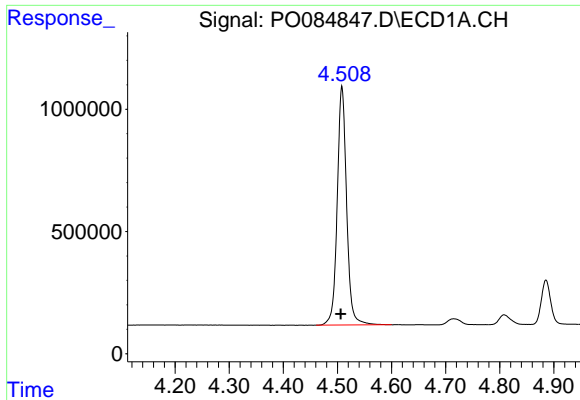
Data Path : Z:\pestpcbsrv\HPCHEM1\ECD_O\Data\P0022222\
 Data File : P0084847.D
 Signal(s) : Signal #1: ECD1A.CH Signal #2: ECD2B.CH
 Acq On : 22 Feb 2022 20:23
 Operator : YP\AJ
 Sample : AR1660CCC500
 Misc :
 ALS Vial : 3 Sample Multiplier: 1

Instrument :
 ECD_O
 ClientSampleId :
 AR1660CCC500

Integration File signal 1: autoint1.e
 Integration File signal 2: autoint2.e
 Quant Time: Feb 23 00:54:01 2022
 Quant Method : Z:\pestpcbsrv\HPCHEM1\ECD_O\methods\P0021422.M
 Quant Title : GC EXTRACTABLES
 QLast Update : Mon Feb 14 17:50:29 2022
 Response via : Initial Calibration
 Integrator: ChemStation 6890 Scale Mode: Small noise peaks clipped

Volume Inj. : 2 µl
 Signal #1 Phase : ZB-MR1 Signal #2 Phase: ZB-MR2
 Signal #1 Info : 30Mx0.32mmx 0.50µ Signal #2 Info : 30M x 0.32mm x 0.25µm

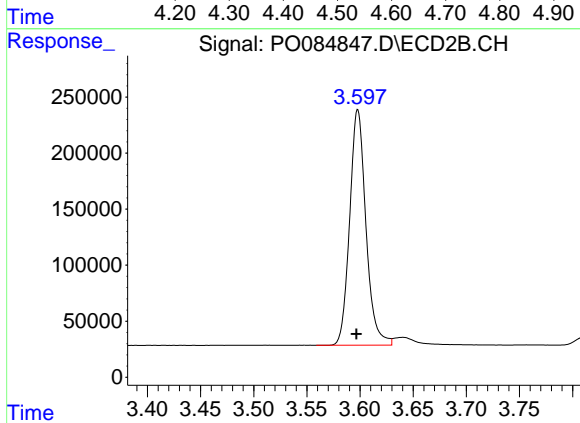




#1 Tetrachloro-m-xylene

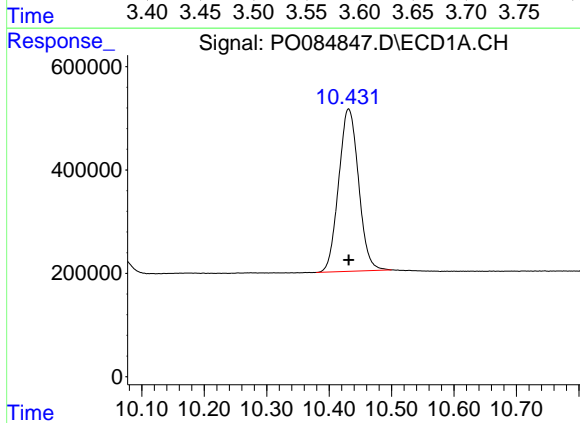
R.T.: 4.508 min
 Delta R.T.: 0.002 min
 Response: 11795378
 Conc: 59.99 ng/ml

Instrument :
 ECD_O
 ClientSampleId :
 AR1660CCC500



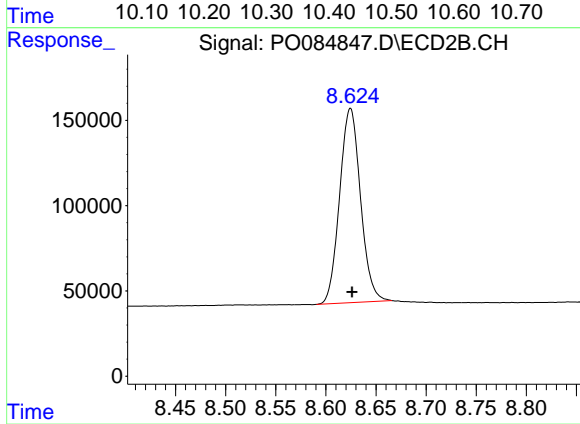
#1 Tetrachloro-m-xylene

R.T.: 3.598 min
 Delta R.T.: 0.001 min
 Response: 2240139
 Conc: 49.67 ng/ml



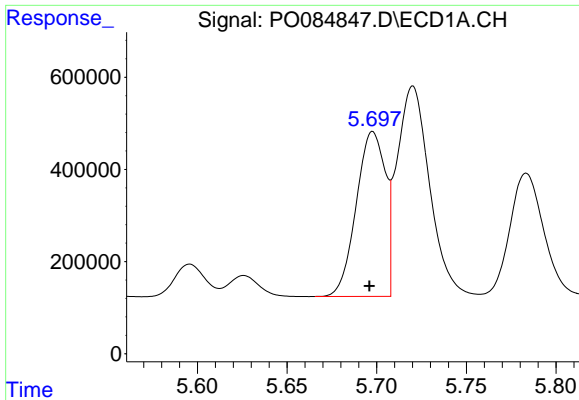
#2 Decachlorobiphenyl

R.T.: 10.431 min
 Delta R.T.: 0.000 min
 Response: 6949321
 Conc: 56.00 ng/ml



#2 Decachlorobiphenyl

R.T.: 8.625 min
 Delta R.T.: -0.002 min
 Response: 1654438
 Conc: 45.38 ng/ml

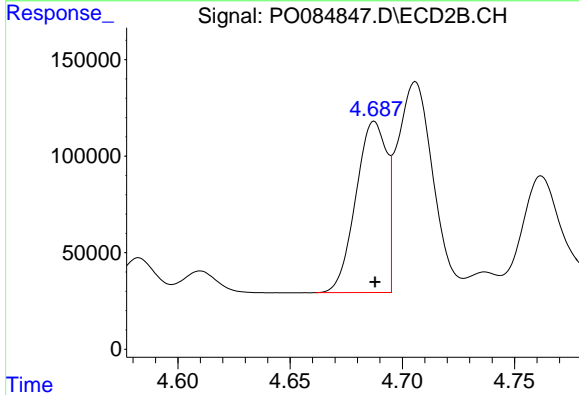


#3 AR-1016-1

R.T.: 5.698 min
 Delta R.T.: 0.002 min
 Response: 4029348
 Conc: 622.35 ng/ml

Instrument :
 ECD_O
 ClientSampleId :
 AR1660CCC500

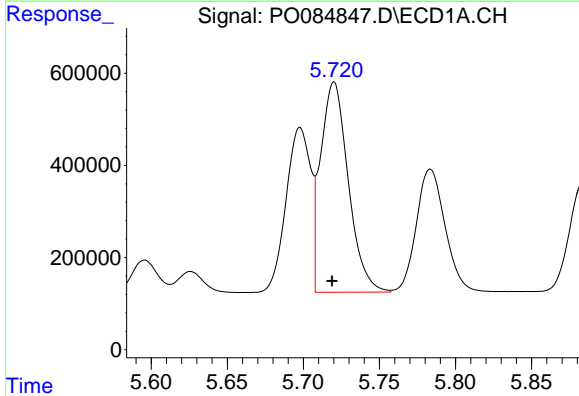
Time



#3 AR-1016-1

R.T.: 4.688 min
 Delta R.T.: 0.000 min
 Response: 845981
 Conc: 492.78 ng/ml

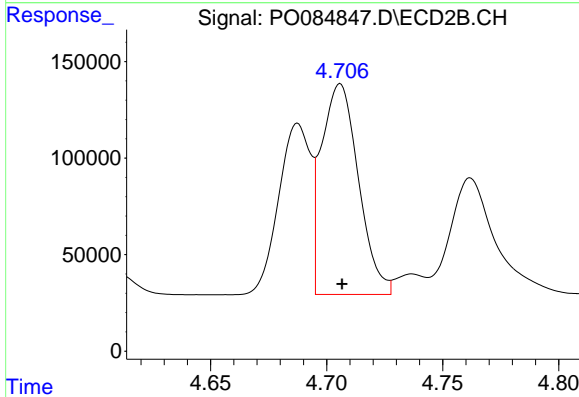
Time



#4 AR-1016-2

R.T.: 5.720 min
 Delta R.T.: 0.001 min
 Response: 5773141
 Conc: 620.99 ng/ml

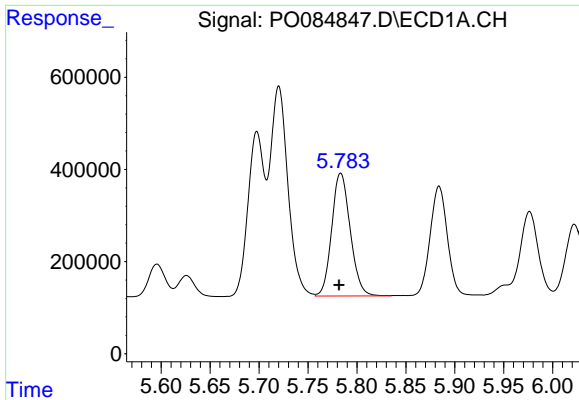
Time



#4 AR-1016-2

R.T.: 4.706 min
 Delta R.T.: 0.000 min
 Response: 1213531
 Conc: 501.43 ng/ml

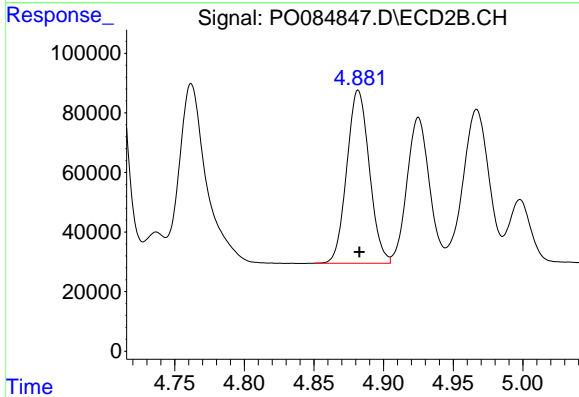
Time



#5 AR-1016-3

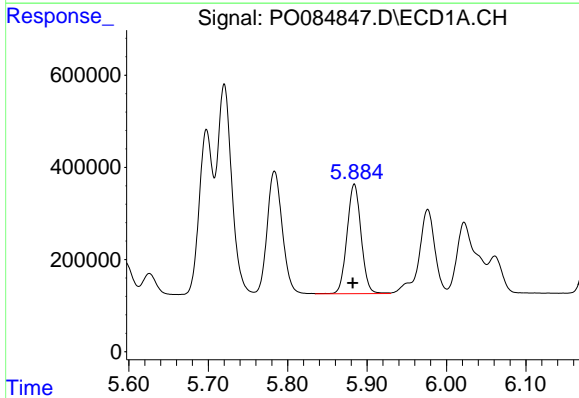
R.T.: 5.783 min
 Delta R.T.: 0.002 min
 Response: 3511508
 Conc: 624.33 ng/ml

Instrument :
 ECD_O
 ClientSampleId :
 AR1660CCC500



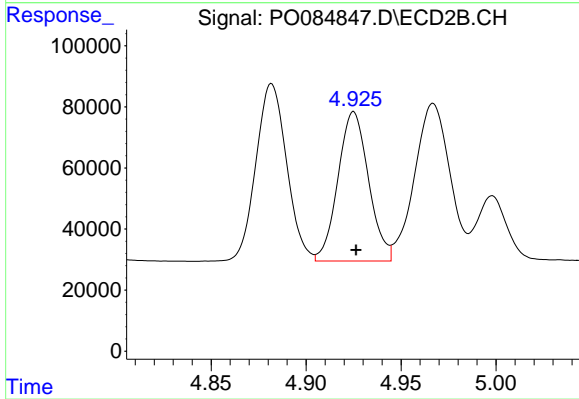
#5 AR-1016-3

R.T.: 4.882 min
 Delta R.T.: 0.000 min
 Response: 654254
 Conc: 497.85 ng/ml



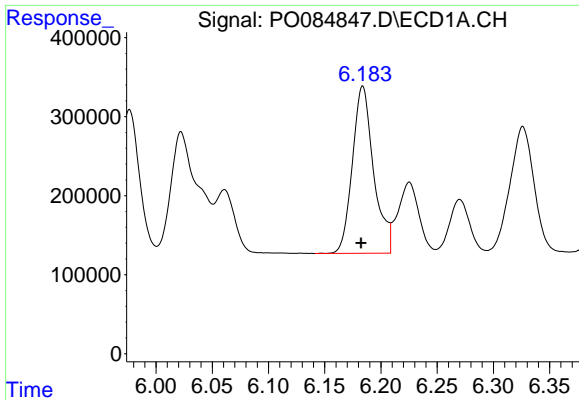
#6 AR-1016-4

R.T.: 5.884 min
 Delta R.T.: 0.002 min
 Response: 2921655
 Conc: 629.77 ng/ml



#6 AR-1016-4

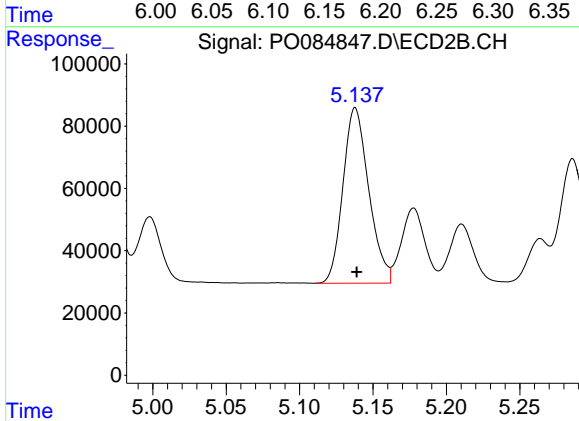
R.T.: 4.925 min
 Delta R.T.: -0.001 min
 Response: 548664
 Conc: 495.20 ng/ml



#7 AR-1016-5

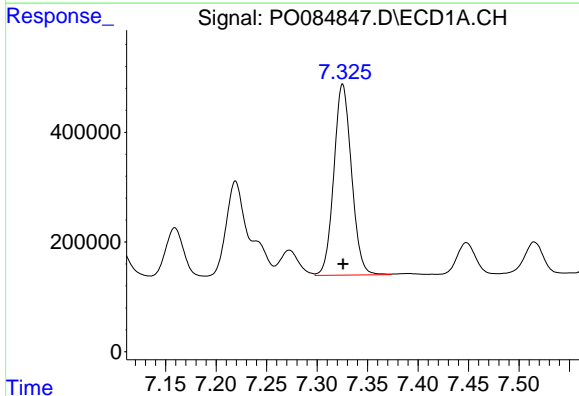
R.T.: 6.184 min
 Delta R.T.: 0.001 min
 Response: 2780765
 Conc: 620.63 ng/ml

Instrument :
 ECD_O
 ClientSampleId :
 AR1660CCC500



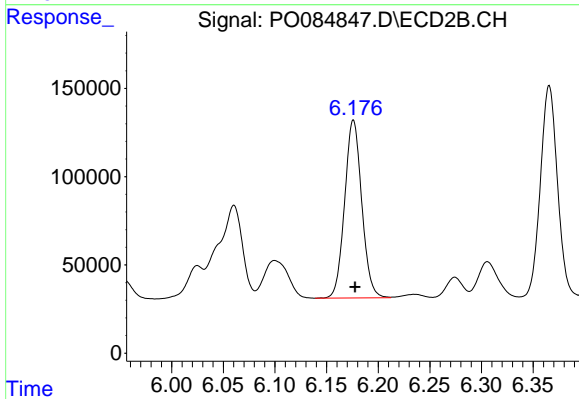
#7 AR-1016-5

R.T.: 5.138 min
 Delta R.T.: 0.000 min
 Response: 689764
 Conc: 498.37 ng/ml



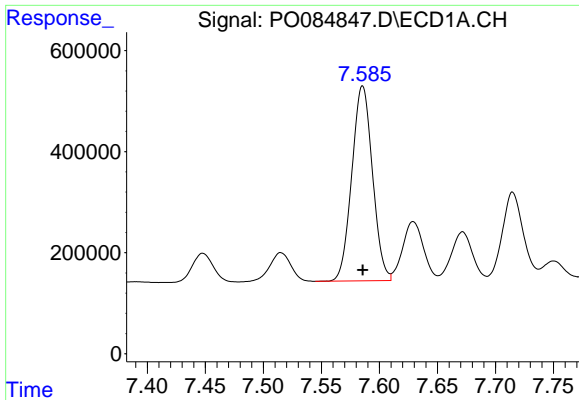
#31 AR-1260-1

R.T.: 7.325 min
 Delta R.T.: 0.000 min
 Response: 4245566
 Conc: 613.46 ng/ml



#31 AR-1260-1

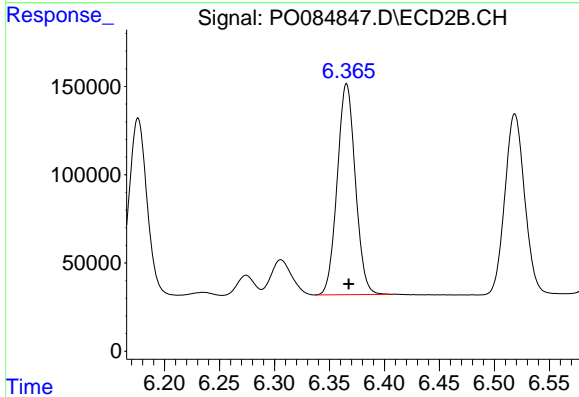
R.T.: 6.176 min
 Delta R.T.: -0.002 min
 Response: 1163025
 Conc: 480.00 ng/ml



#32 AR-1260-2

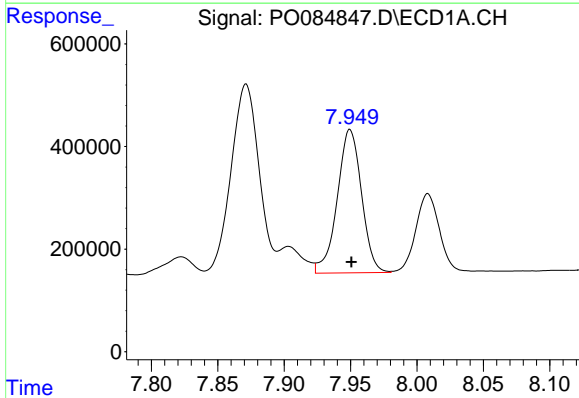
R.T.: 7.586 min
 Delta R.T.: 0.000 min
 Response: 4778168
 Conc: 584.54 ng/ml

Instrument :
 ECD_O
 ClientSampleId :
 AR1660CCC500



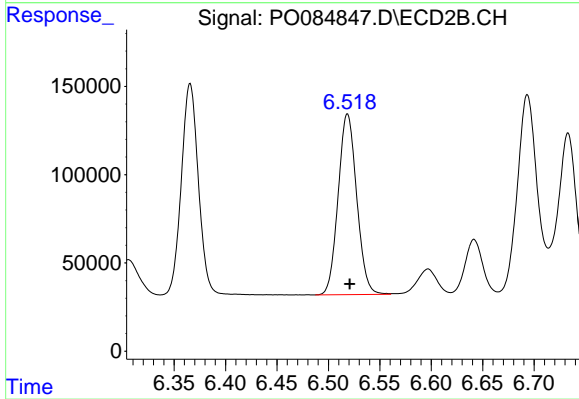
#32 AR-1260-2

R.T.: 6.366 min
 Delta R.T.: -0.002 min
 Response: 1371189
 Conc: 473.38 ng/ml



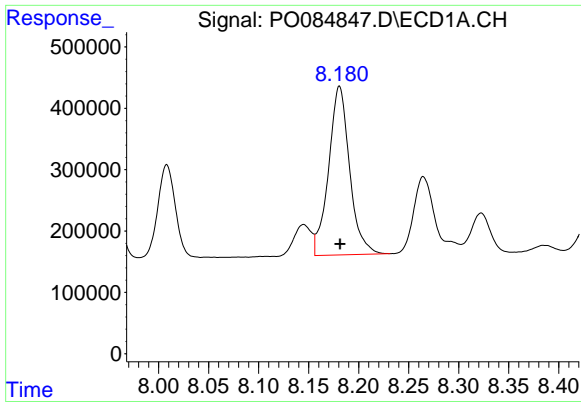
#33 AR-1260-3

R.T.: 7.950 min
 Delta R.T.: 0.000 min
 Response: 3559669
 Conc: 580.12 ng/ml



#33 AR-1260-3

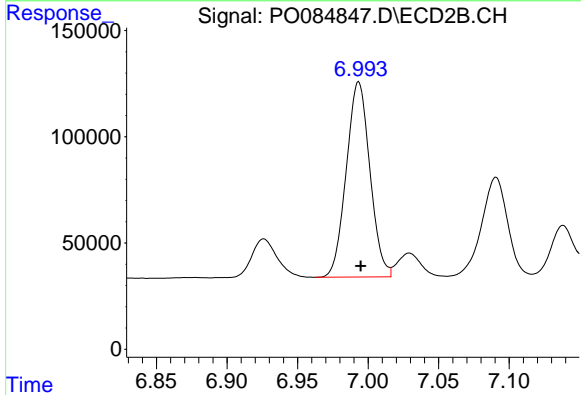
R.T.: 6.519 min
 Delta R.T.: -0.002 min
 Response: 1286173
 Conc: 472.64 ng/ml



#34 AR-1260-4

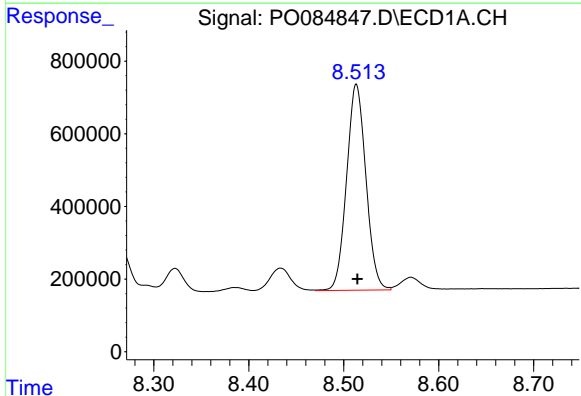
R.T.: 8.181 min
 Delta R.T.: 0.000 min
 Response: 4013377
 Conc: 575.04 ng/ml

Instrument :
 ECD_O
 ClientSampleId :
 AR1660CCC500



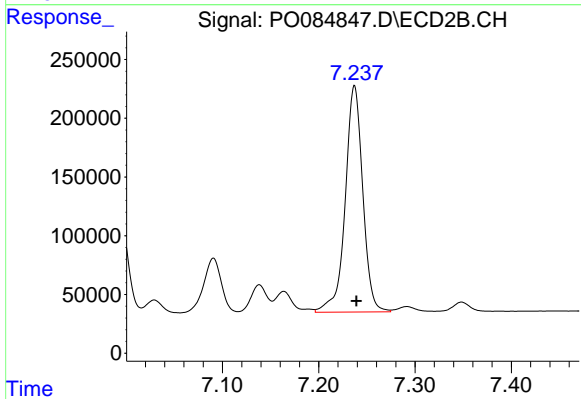
#34 AR-1260-4

R.T.: 6.993 min
 Delta R.T.: -0.002 min
 Response: 1071253
 Conc: 465.53 ng/ml



#35 AR-1260-5

R.T.: 8.513 min
 Delta R.T.: 0.000 min
 Response: 8013932
 Conc: 582.26 ng/ml



#35 AR-1260-5

R.T.: 7.237 min
 Delta R.T.: -0.002 min
 Response: 2431205
 Conc: 459.27 ng/ml