

Data Path : Z:\pestpcbsrv\HPCHEM1\ECD_0\Data\P0022322\
 Data File : P0084867.D
 Signal(s) : Signal #1: ECD1A.CH Signal #2: ECD2B.CH
 Acq On : 23 Feb 2022 18:42
 Operator : YP\AJ
 Sample : AR1221ICC500
 Misc :
 ALS Vial : 8 Sample Multiplier: 1

Instrument :
 ECD_0
ClientSampleId :
 AR1221ICC500

Integration File signal 1: autoint1.e
 Integration File signal 2: autoint2.e
 Quant Time: Feb 24 03:25:45 2022
 Quant Method : Z:\pestpcbsrv\HPCHEM1\ECD_0\methods\P0022322.M
 Quant Title : GC EXTRACTABLES
 QLast Update : Thu Feb 24 03:25:30 2022
 Response via : Initial Calibration
 Integrator: ChemStation 6890 Scale Mode: Small noise peaks clipped

Volume Inj. : 2 µl
 Signal #1 Phase : ZB-MR1 Signal #2 Phase: ZB-MR2
 Signal #1 Info : 30Mx0.32mmx 0.50µ Signal #2 Info : 30M x 0.32mm x 0.25µm

Compound	RT#1	RT#2	Resp#1	Resp#2	ng/ml	ng/ml

System Monitoring Compounds						
1) SA Tetrachlo...	4.507	3.594	13245165	2108794	50.000	50.000
2) SA Decachlor...	10.429	8.622	8759318	1814468	50.000	50.000
Target Compounds						
8) L2 AR-1221-1	4.719	3.810	1551464	288988	500.000	500.000
9) L2 AR-1221-2	4.806	3.895	1178971	219272	500.000	500.000
10) L2 AR-1221-3	4.885	3.972	3587678	668707	500.000	500.000

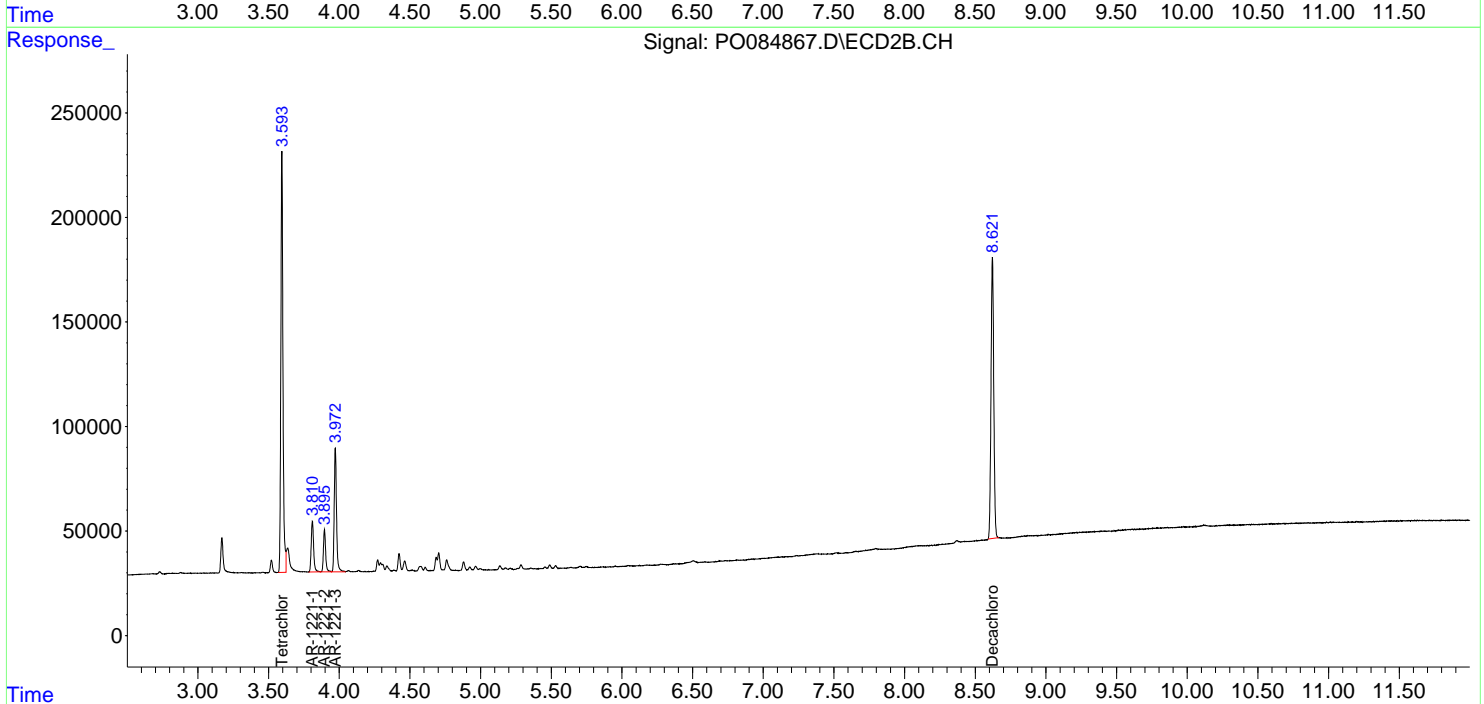
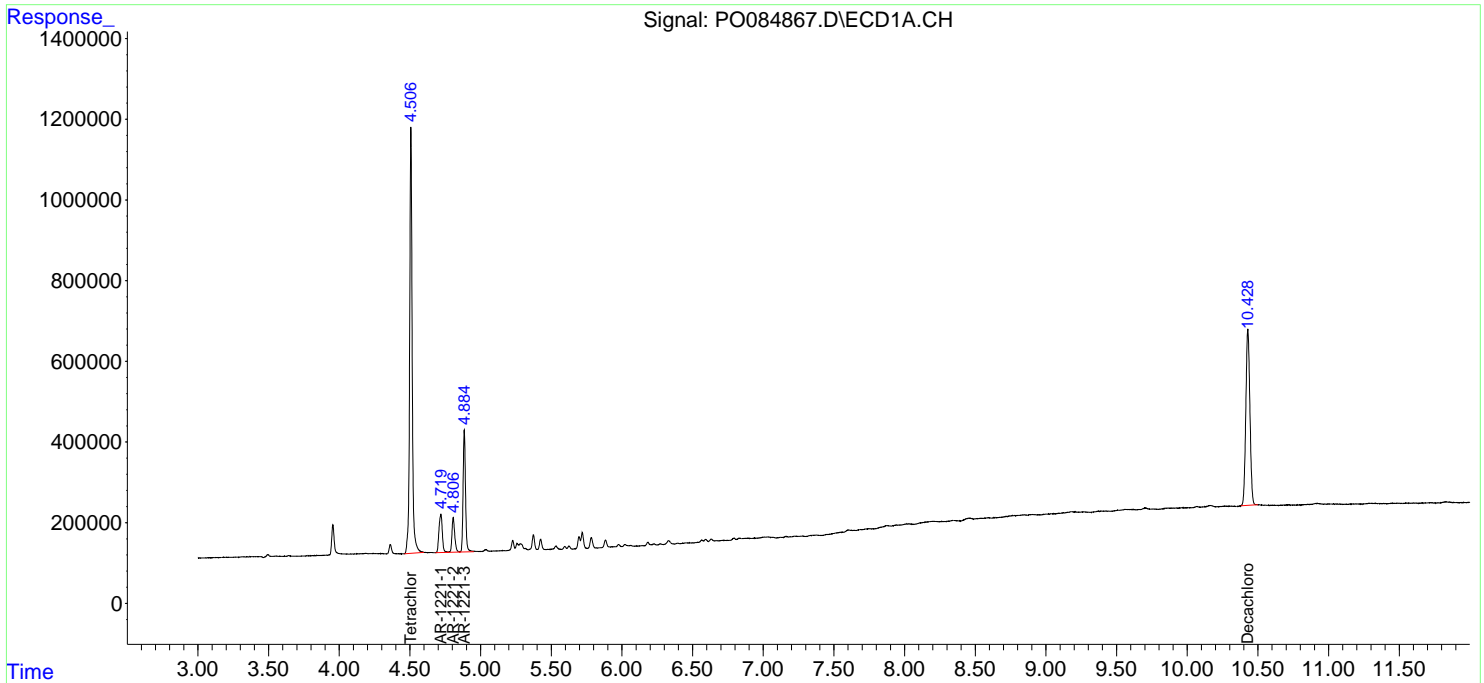
(f)=RT Delta > 1/2 Window (#)=Amounts differ by > 25% (m)=manual int.

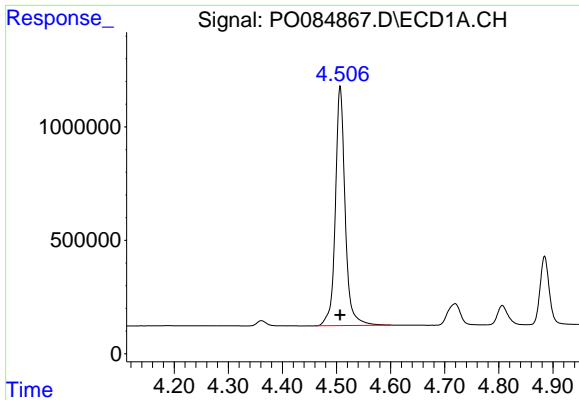
Data Path : Z:\pestpcbsrv\HPCHEM1\ECD_O\Data\P0022322\
 Data File : P0084867.D
 Signal(s) : Signal #1: ECD1A.CH Signal #2: ECD2B.CH
 Acq On : 23 Feb 2022 18:42
 Operator : YP\AJ
 Sample : AR1221ICC500
 Misc :
 ALS Vial : 8 Sample Multiplier: 1

Instrument :
 ECD_O
 ClientSampleId :
 AR1221ICC500

Integration File signal 1: autoint1.e
 Integration File signal 2: autoint2.e
 Quant Time: Feb 24 03:25:45 2022
 Quant Method : Z:\pestpcbsrv\HPCHEM1\ECD_O\methods\P0022322.M
 Quant Title : GC EXTRACTABLES
 QLast Update : Thu Feb 24 03:25:30 2022
 Response via : Initial Calibration
 Integrator: ChemStation 6890 Scale Mode: Small noise peaks clipped

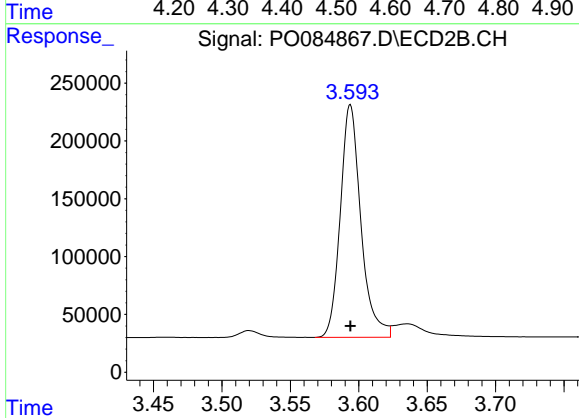
Volume Inj. : 2 µl
 Signal #1 Phase : ZB-MR1 Signal #2 Phase: ZB-MR2
 Signal #1 Info : 30Mx0.32mmx 0.50µ Signal #2 Info : 30M x 0.32mm x 0.25µm



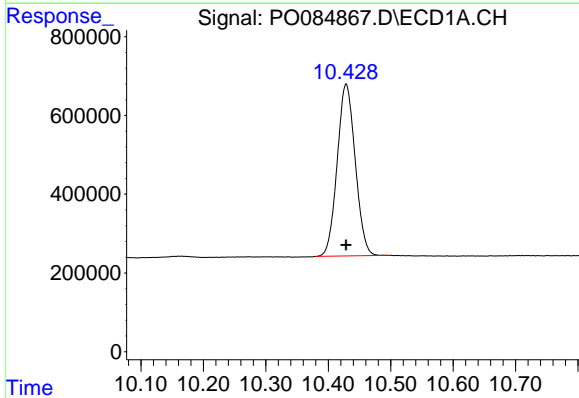


#1 Tetrachloro-m-xylene
 R.T.: 4.507 min
 Delta R.T.: 0.000 min
 Response: 13245165
 Conc: 50.00 ng/ml

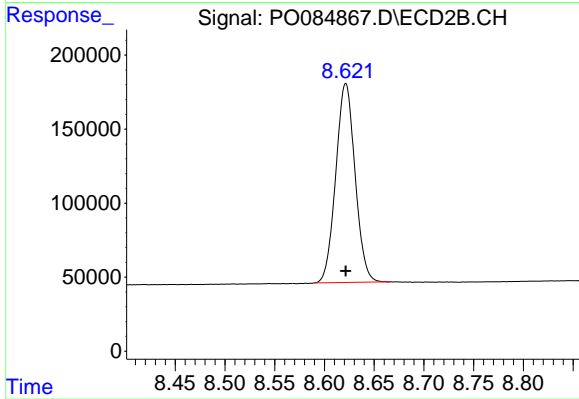
Instrument :
 ECD_O
 ClientSampleId :
 AR1221ICC500



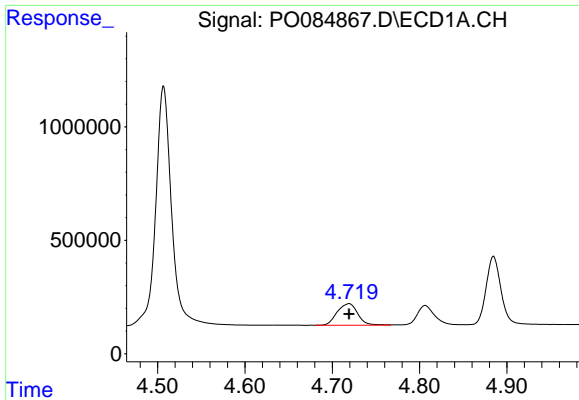
#1 Tetrachloro-m-xylene
 R.T.: 3.594 min
 Delta R.T.: 0.000 min
 Response: 2108794
 Conc: 50.00 ng/ml



#2 Decachlorobiphenyl
 R.T.: 10.429 min
 Delta R.T.: 0.000 min
 Response: 8759318
 Conc: 50.00 ng/ml



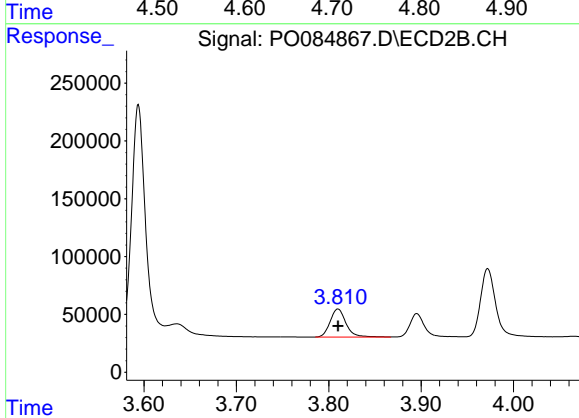
#2 Decachlorobiphenyl
 R.T.: 8.622 min
 Delta R.T.: 0.000 min
 Response: 1814468
 Conc: 50.00 ng/ml



#8 AR-1221-1

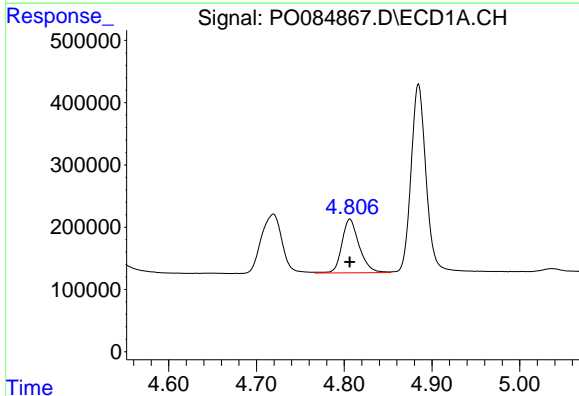
R.T.: 4.719 min
 Delta R.T.: 0.000 min
 Response: 1551464
 Conc: 500.00 ng/ml

Instrument :
 ECD_O
 ClientSampleId :
 AR1221ICC500



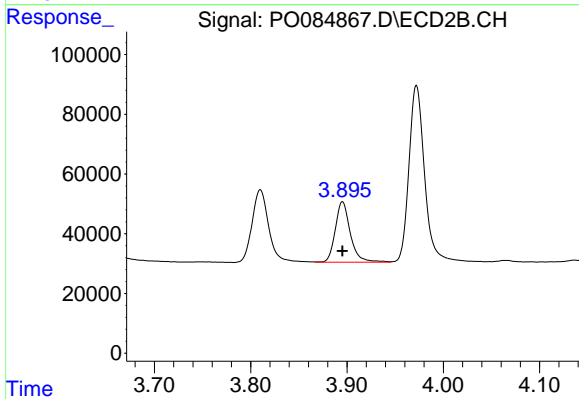
#8 AR-1221-1

R.T.: 3.810 min
 Delta R.T.: 0.000 min
 Response: 288988
 Conc: 500.00 ng/ml



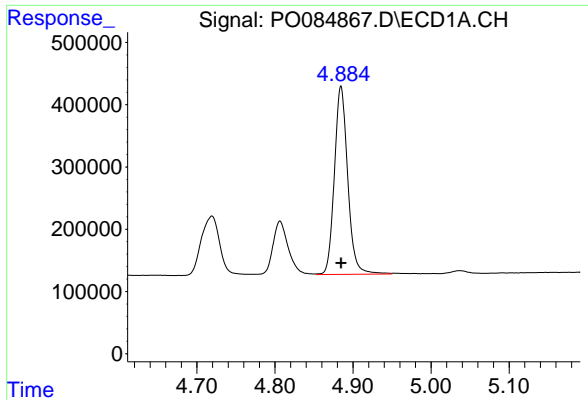
#9 AR-1221-2

R.T.: 4.806 min
 Delta R.T.: 0.000 min
 Response: 1178971
 Conc: 500.00 ng/ml



#9 AR-1221-2

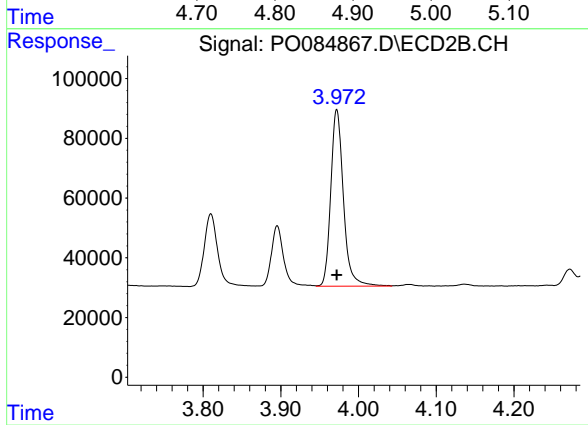
R.T.: 3.895 min
 Delta R.T.: 0.000 min
 Response: 219272
 Conc: 500.00 ng/ml



#10 AR-1221-3

R.T.: 4.885 min
 Delta R.T.: 0.000 min
 Response: 3587678
 Conc: 500.00 ng/ml

Instrument :
 ECD_O
 ClientSampleId :
 AR1221ICC500



#10 AR-1221-3

R.T.: 3.972 min
 Delta R.T.: 0.000 min
 Response: 668707
 Conc: 500.00 ng/ml