

Data Path : Z:\pestpcbsrv\HPCHEM1\ECD\_0\Data\P0022324\  
 Data File : P0102025.D  
 Signal(s) : Signal #1: ECD1A.ch Signal #2: ECD2B.ch  
 Acq On : 23 Feb 2024 19:26  
 Operator : YP/AJ  
 Sample : AR1660IC050  
 Misc :  
 ALS Vial : 7 Sample Multiplier: 1

Instrument :  
 ECD\_0  
 ClientSampleId :  
 AR1660IC050

Integration File signal 1: autoint1.e  
 Integration File signal 2: autoint2.e  
 Quant Time: Feb 24 00:40:43 2024  
 Quant Method : Z:\pestpcbsrv\HPCHEM1\ECD\_0\methods\P0022324.M  
 Quant Title : GC EXTRACTABLES  
 QLast Update : Sat Feb 24 00:40:34 2024  
 Response via : Initial Calibration  
 Integrator: ChemStation

Volume Inj. : 2 µl  
 Signal #1 Phase : ZB-MR2 Signal #2 Phase: ZB-MR2  
 Signal #1 Info : 30Mx0.32mmx 0.50µ Signal #2 Info : 30M x 0.32mm x 0.25µm

Compound	RT#1	RT#2	Resp#1	Resp#2	ng/ml	ng/ml
-----						
System Monitoring Compounds						
1) SA Tetrachlo...	4.281	3.391	22419827	15959641	4.834	4.911
2) SA Decachlor...	9.841	8.271	12337973	9992895	4.845	4.830
Target Compounds						
3) L1 AR-1016-1	5.428	4.447	6520594	4903825	50.526	53.440
4) L1 AR-1016-2	5.450	4.464	9851133	6946919	51.500	51.824
5) L1 AR-1016-3	5.511	4.637	6431515	3884632	52.089	52.676
6) L1 AR-1016-4	5.609	4.678	4869157	3419641	49.647	54.258
7) L1 AR-1016-5	5.899	4.886	4811813	4092487	49.651	51.967
31) L7 AR-1260-1	7.011	5.901	8144219	7886980	50.121	53.255
32) L7 AR-1260-2	7.266	6.087	9013713	9156537	50.544	53.342
33) L7 AR-1260-3	7.622	6.238	6226686	9483702	47.850	57.363
34) L7 AR-1260-4	7.845	6.703	6701870	6327137	47.181	49.572
35) L7 AR-1260-5	8.151	6.944	12972691	13295665	49.127	48.570
-----						

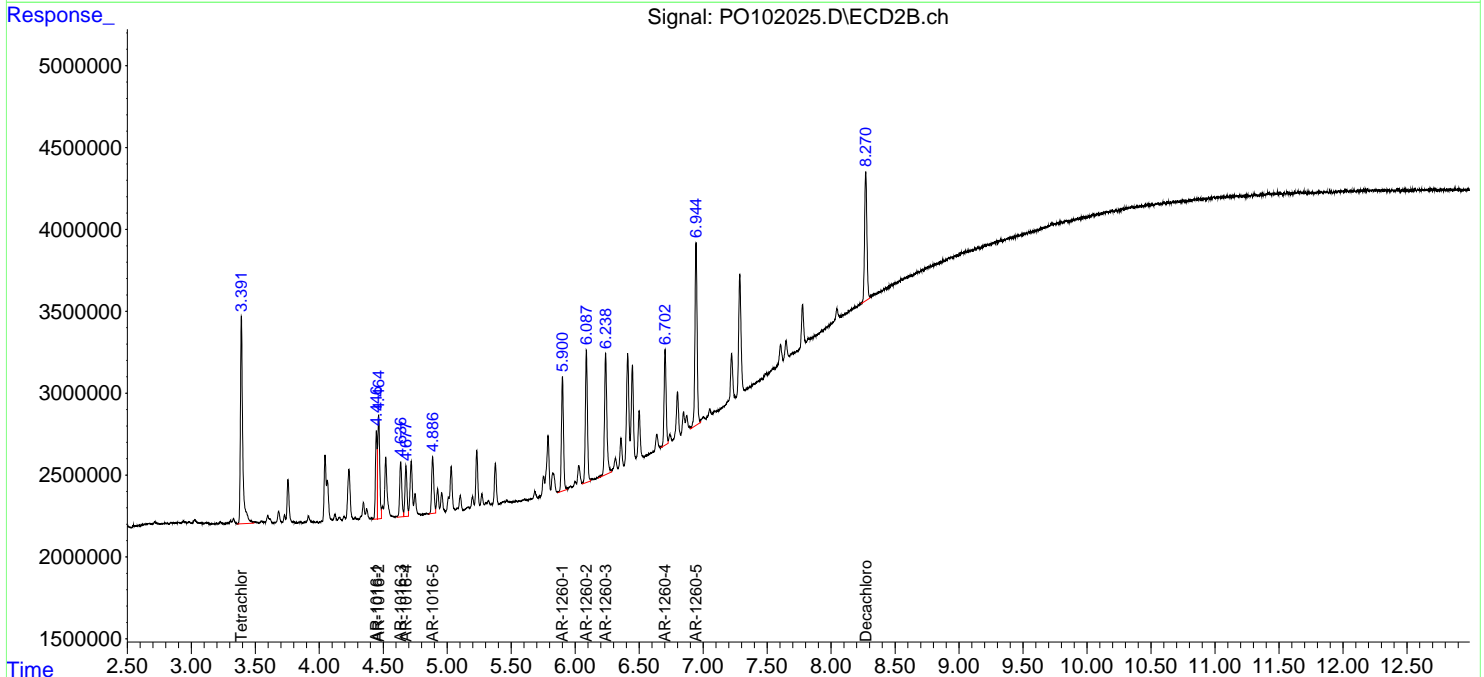
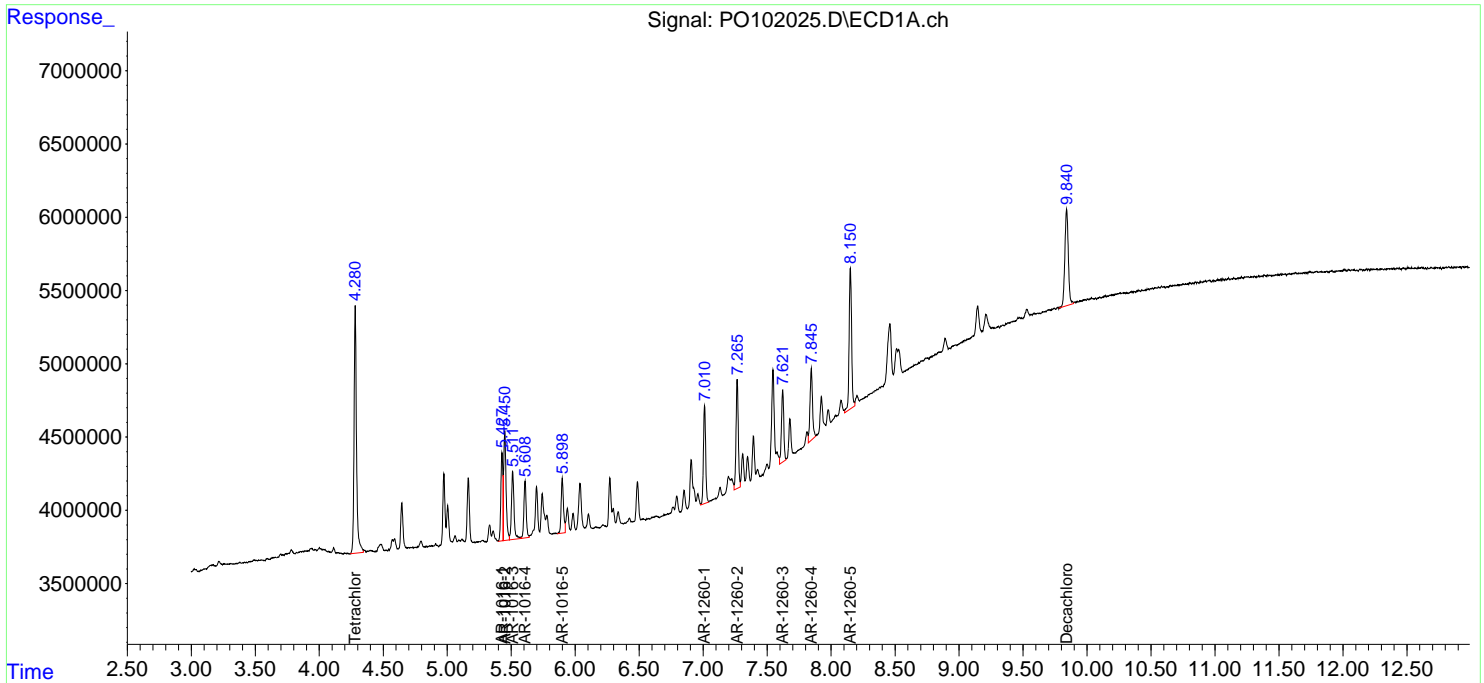
(f)=RT Delta > 1/2 Window (#)=Amounts differ by > 25% (m)=manual int.

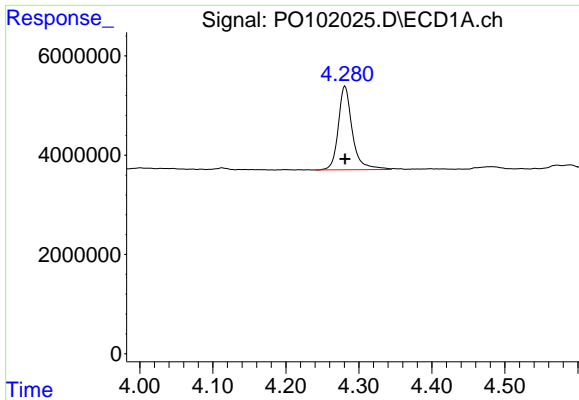
Data Path : Z:\pestpcbsrv\HPCHEM1\ECD\_O\Data\PO022324\  
 Data File : PO102025.D  
 Signal(s) : Signal #1: ECD1A.ch Signal #2: ECD2B.ch  
 Acq On : 23 Feb 2024 19:26  
 Operator : YP/AJ  
 Sample : AR1660ICC050  
 Misc :  
 ALS Vial : 7 Sample Multiplier: 1

Instrument :  
 ECD\_O  
 ClientSampleId :  
 AR1660ICC050

Integration File signal 1: autoint1.e  
 Integration File signal 2: autoint2.e  
 Quant Time: Feb 24 00:40:43 2024  
 Quant Method : Z:\pestpcbsrv\HPCHEM1\ECD\_O\methods\PO022324.M  
 Quant Title : GC EXTRACTABLES  
 QLast Update : Sat Feb 24 00:40:34 2024  
 Response via : Initial Calibration  
 Integrator: ChemStation

Volume Inj. : 2 µl  
 Signal #1 Phase : ZB-MR1 Signal #2 Phase: ZB-MR2  
 Signal #1 Info : 30Mx0.32mmx 0.50µ Signal #2 Info : 30M x 0.32mm x 0.25µm

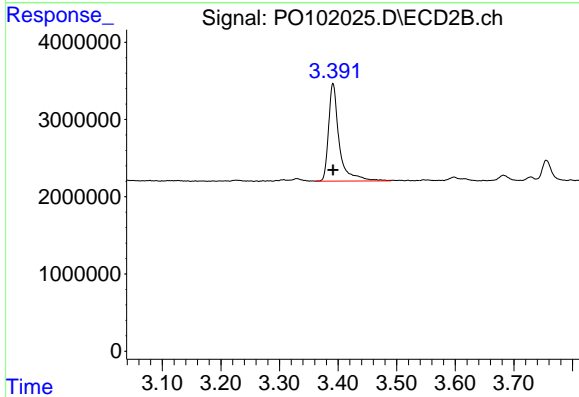




#1 Tetrachloro-m-xylene

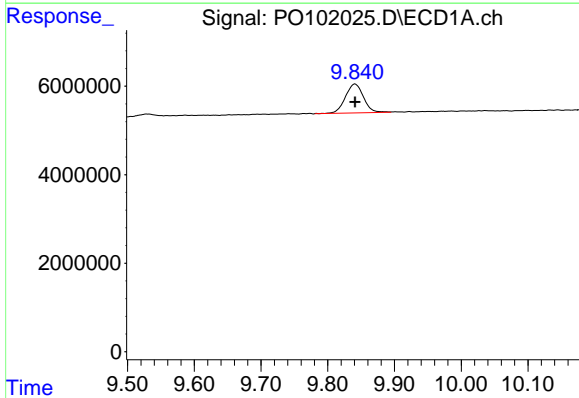
R.T.: 4.281 min  
 Delta R.T.: 0.000 min  
 Response: 22419827  
 Conc: 4.83 ng/ml

Instrument :  
 ECD\_O  
 ClientSampleId :  
 AR1660ICC050



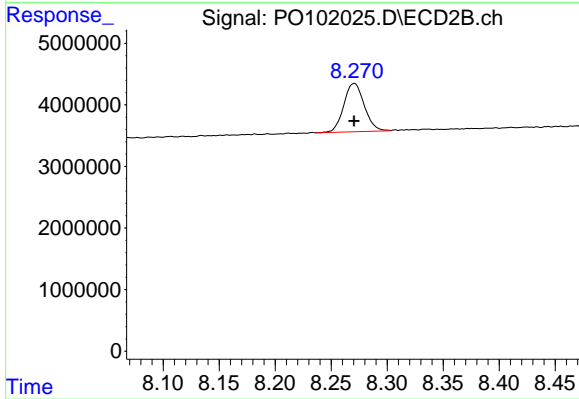
#1 Tetrachloro-m-xylene

R.T.: 3.391 min  
 Delta R.T.: 0.000 min  
 Response: 15959641  
 Conc: 4.91 ng/ml



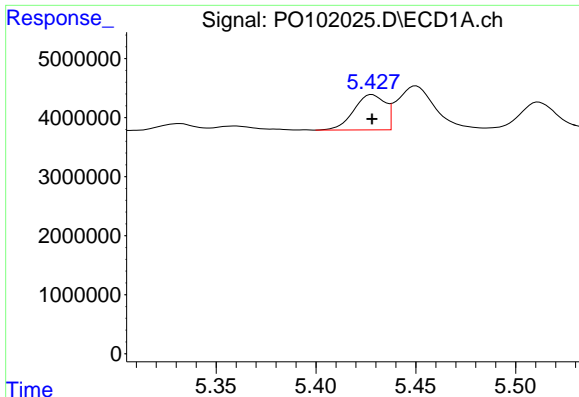
#2 Decachlorobiphenyl

R.T.: 9.841 min  
 Delta R.T.: 0.000 min  
 Response: 12337973  
 Conc: 4.85 ng/ml



#2 Decachlorobiphenyl

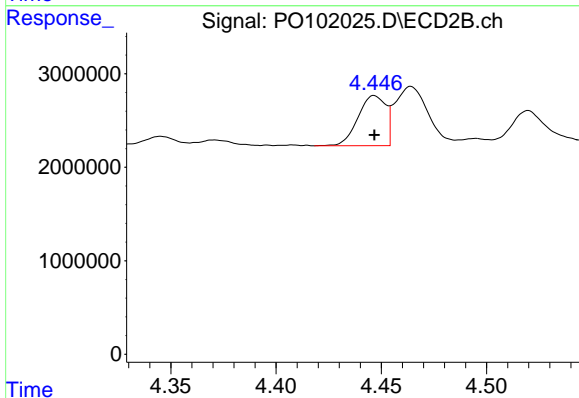
R.T.: 8.271 min  
 Delta R.T.: 0.000 min  
 Response: 9992895  
 Conc: 4.83 ng/ml



#3 AR-1016-1

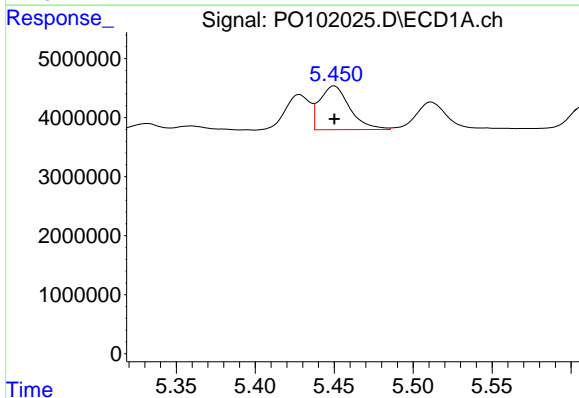
R.T.: 5.428 min  
 Delta R.T.: 0.000 min  
 Response: 6520594  
 Conc: 50.53 ng/ml

Instrument :  
 ECD\_O  
 ClientSampleId :  
 AR1660ICC050



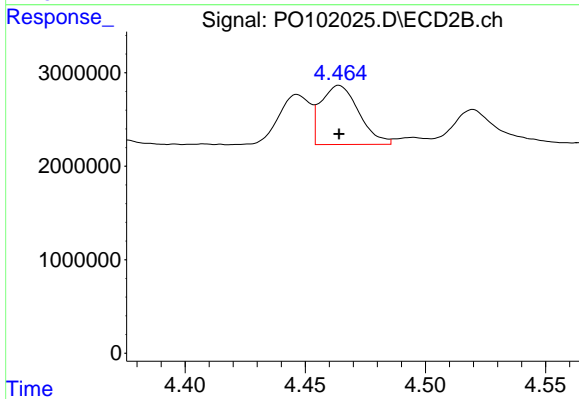
#3 AR-1016-1

R.T.: 4.447 min  
 Delta R.T.: 0.000 min  
 Response: 4903825  
 Conc: 53.44 ng/ml



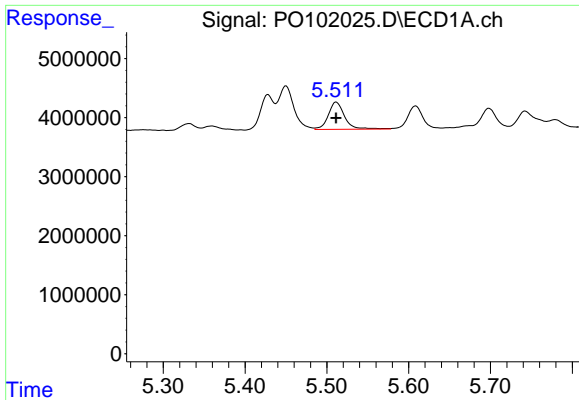
#4 AR-1016-2

R.T.: 5.450 min  
 Delta R.T.: 0.000 min  
 Response: 9851133  
 Conc: 51.50 ng/ml



#4 AR-1016-2

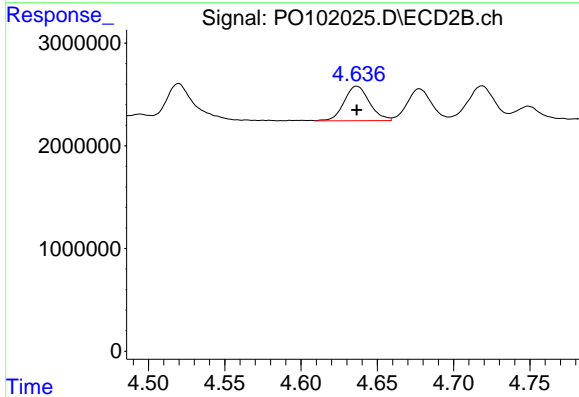
R.T.: 4.464 min  
 Delta R.T.: 0.000 min  
 Response: 6946919  
 Conc: 51.82 ng/ml



#5 AR-1016-3

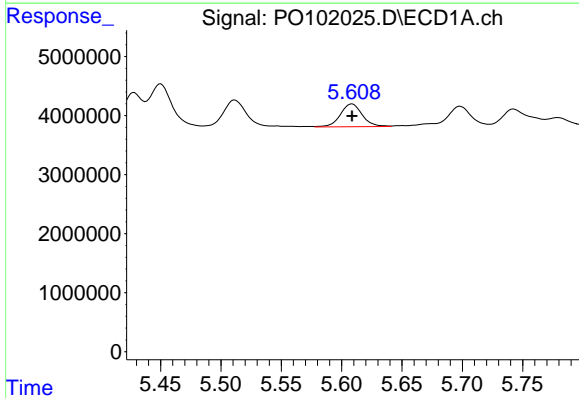
R.T.: 5.511 min  
 Delta R.T.: 0.000 min  
 Response: 6431515  
 Conc: 52.09 ng/ml

Instrument :  
 ECD\_O  
 ClientSampleId :  
 AR1660ICC050



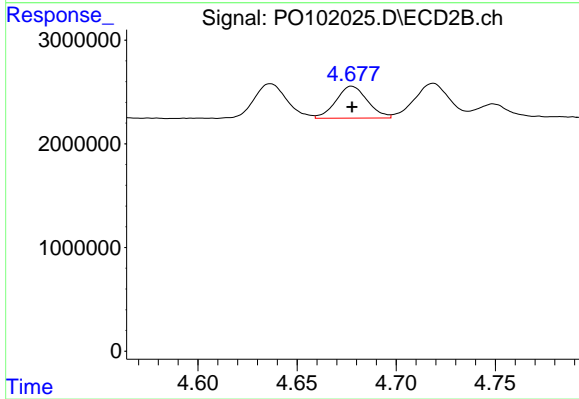
#5 AR-1016-3

R.T.: 4.637 min  
 Delta R.T.: 0.000 min  
 Response: 3884632  
 Conc: 52.68 ng/ml



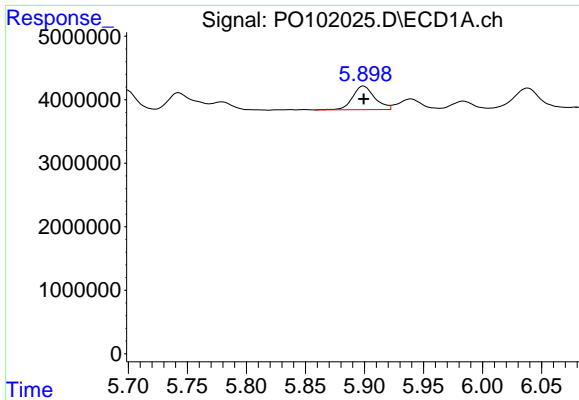
#6 AR-1016-4

R.T.: 5.609 min  
 Delta R.T.: 0.000 min  
 Response: 4869157  
 Conc: 49.65 ng/ml



#6 AR-1016-4

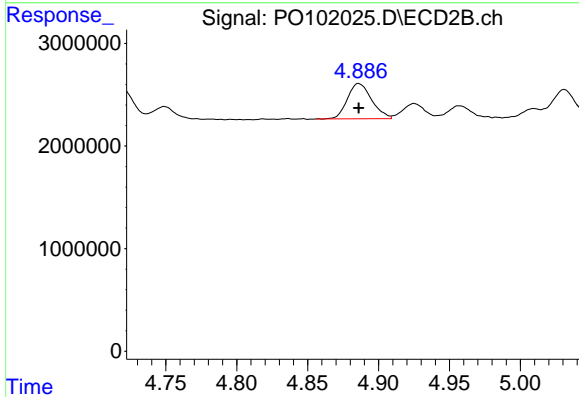
R.T.: 4.678 min  
 Delta R.T.: 0.000 min  
 Response: 3419641  
 Conc: 54.26 ng/ml



#7 AR-1016-5

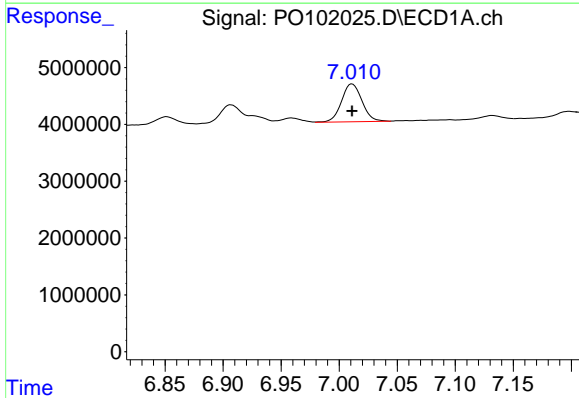
R.T.: 5.899 min  
 Delta R.T.: 0.000 min  
 Response: 4811813  
 Conc: 49.65 ng/ml

Instrument :  
 ECD\_O  
 ClientSampleId :  
 AR1660ICC050



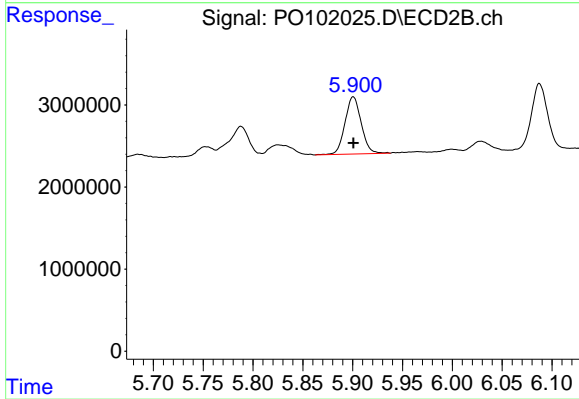
#7 AR-1016-5

R.T.: 4.886 min  
 Delta R.T.: 0.000 min  
 Response: 4092487  
 Conc: 51.97 ng/ml



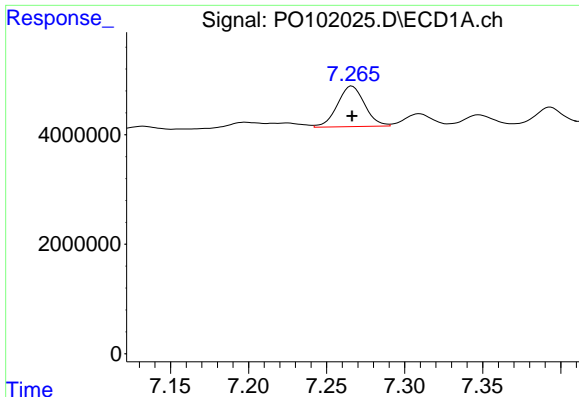
#31 AR-1260-1

R.T.: 7.011 min  
 Delta R.T.: 0.000 min  
 Response: 8144219  
 Conc: 50.12 ng/ml



#31 AR-1260-1

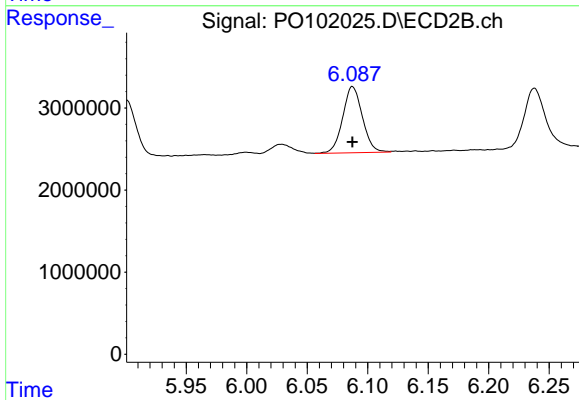
R.T.: 5.901 min  
 Delta R.T.: 0.000 min  
 Response: 7886980  
 Conc: 53.26 ng/ml



#32 AR-1260-2

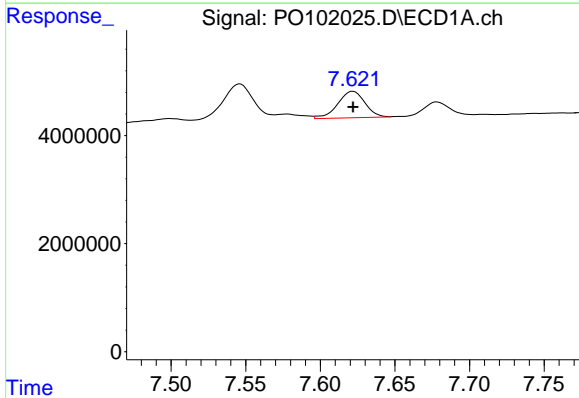
R.T.: 7.266 min  
 Delta R.T.: 0.000 min  
 Response: 9013713  
 Conc: 50.54 ng/ml

Instrument :  
 ECD\_O  
 ClientSampleId :  
 AR1660ICC050



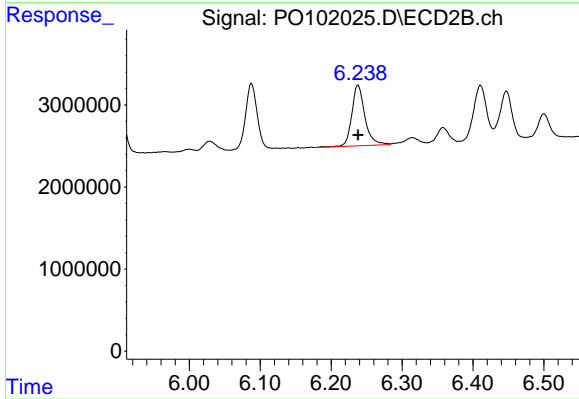
#32 AR-1260-2

R.T.: 6.087 min  
 Delta R.T.: 0.000 min  
 Response: 9156537  
 Conc: 53.34 ng/ml



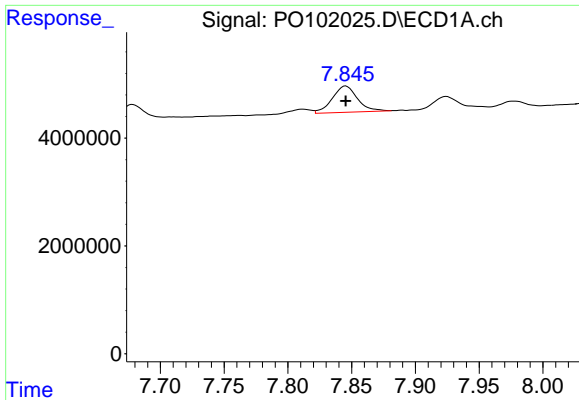
#33 AR-1260-3

R.T.: 7.622 min  
 Delta R.T.: 0.000 min  
 Response: 6226686  
 Conc: 47.85 ng/ml



#33 AR-1260-3

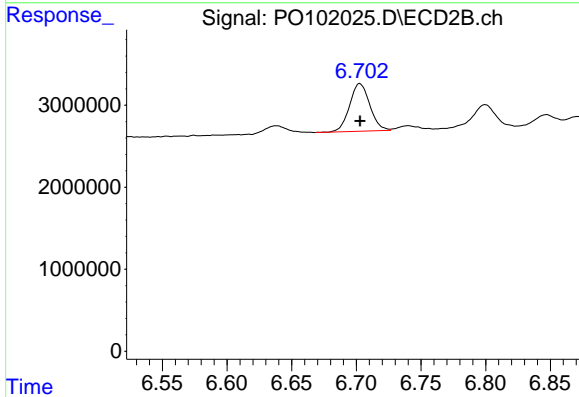
R.T.: 6.238 min  
 Delta R.T.: 0.000 min  
 Response: 9483702  
 Conc: 57.36 ng/ml



#34 AR-1260-4

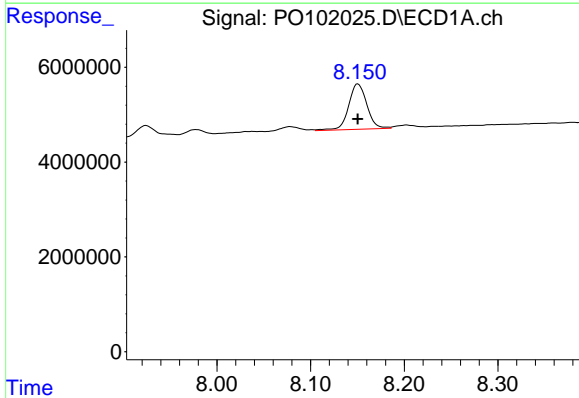
R.T.: 7.845 min  
 Delta R.T.: 0.000 min  
 Response: 6701870  
 Conc: 47.18 ng/ml

Instrument :  
 ECD\_O  
 ClientSampleId :  
 AR1660ICC050



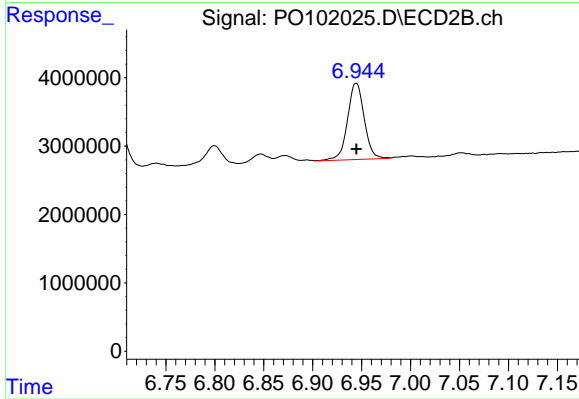
#34 AR-1260-4

R.T.: 6.703 min  
 Delta R.T.: 0.000 min  
 Response: 6327137  
 Conc: 49.57 ng/ml



#35 AR-1260-5

R.T.: 8.151 min  
 Delta R.T.: 0.000 min  
 Response: 12972691  
 Conc: 49.13 ng/ml



#35 AR-1260-5

R.T.: 6.944 min  
 Delta R.T.: 0.000 min  
 Response: 13295665  
 Conc: 48.57 ng/ml