

Data Path : Z:\pestpcbsrv\HPCHEM1\ECD_O\Data\P0022425\
 Data File : P0109462.D
 Signal(s) : Signal #1: ECD1A.ch Signal #2: ECD2B.ch
 Acq On : 24 Feb 2025 10:09
 Operator : YP/AJ
 Sample : AR1248CCC500
 Misc :
 ALS Vial : 5 Sample Multiplier: 1

Instrument :
 ECD_O
ClientSampleId :
 AR1248CCC500

Integration File signal 1: autoint1.e
 Integration File signal 2: autoint2.e
 Quant Time: Feb 25 00:32:12 2025
 Quant Method : Z:\pestpcbsrv\HPCHEM1\ECD_O\methods\P0022025.M
 Quant Title : GC EXTRACTABLES
 QLast Update : Fri Feb 21 04:40:23 2025
 Response via : Initial Calibration
 Integrator: ChemStation

Volume Inj. : 2 µl
 Signal #1 Phase : ZB-MR1 Signal #2 Phase: ZB-MR2
 Signal #1 Info : 30Mx0.32mmx 0.50µ Signal #2 Info : 30M x 0.32mm x 0.25µm

Compound	RT#1	RT#2	Resp#1	Resp#2	ng/ml	ng/ml

System Monitoring Compounds						
1) SA Tetrachlo...	3.696	3.692	444.4E6	248.9E6	46.955	47.548
2) SA Decachlor...	8.752	8.702	392.6E6	145.9E6	45.639	45.816
Target Compounds						
21) L5 AR-1248-1	4.789	4.775	90940511	48181390	455.822	479.288
22) L5 AR-1248-2	5.028	5.012	128.2E6	70220066	460.726	482.679
23) L5 AR-1248-3	5.243	5.054	158.3E6	74423251	452.995	480.125
24) L5 AR-1248-4	5.598	5.225	219.2E6	86451949	459.466	478.171
25) L5 AR-1248-5	5.640	5.617	154.5E6	80556380	450.996	467.796

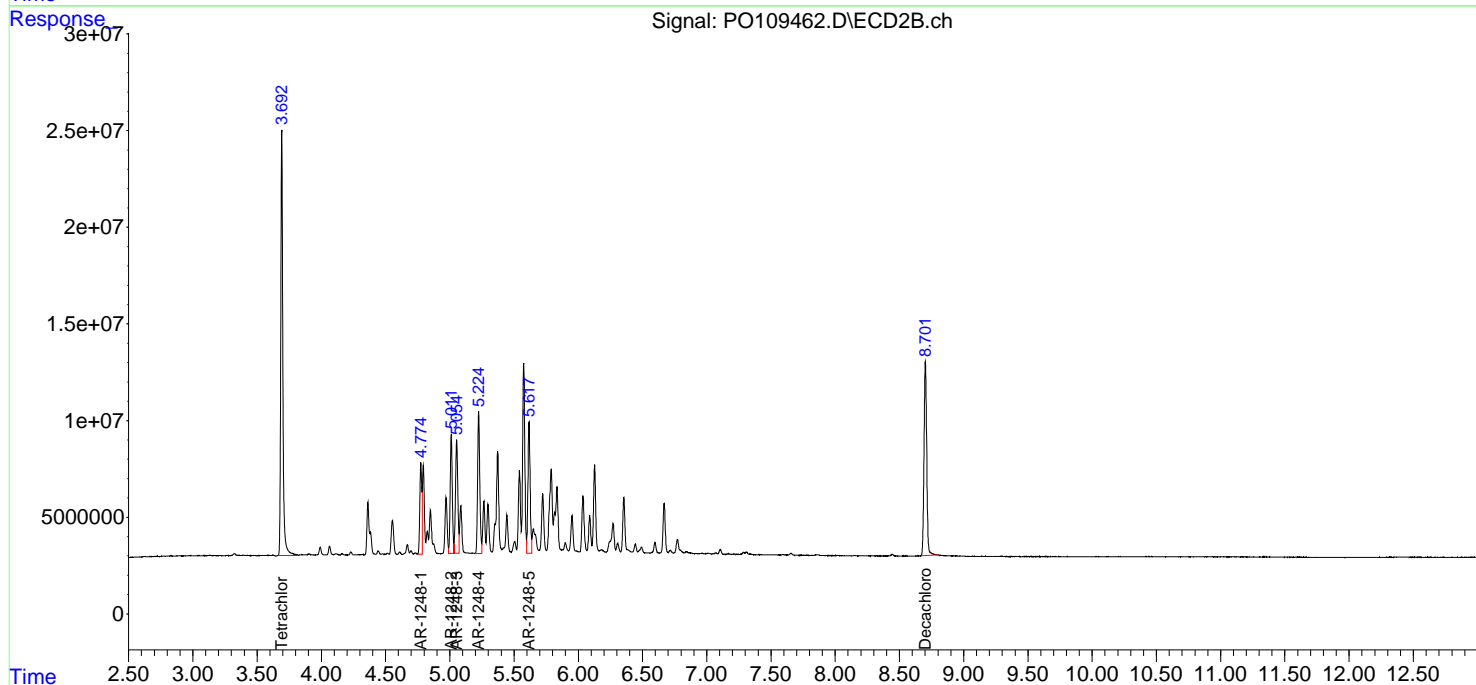
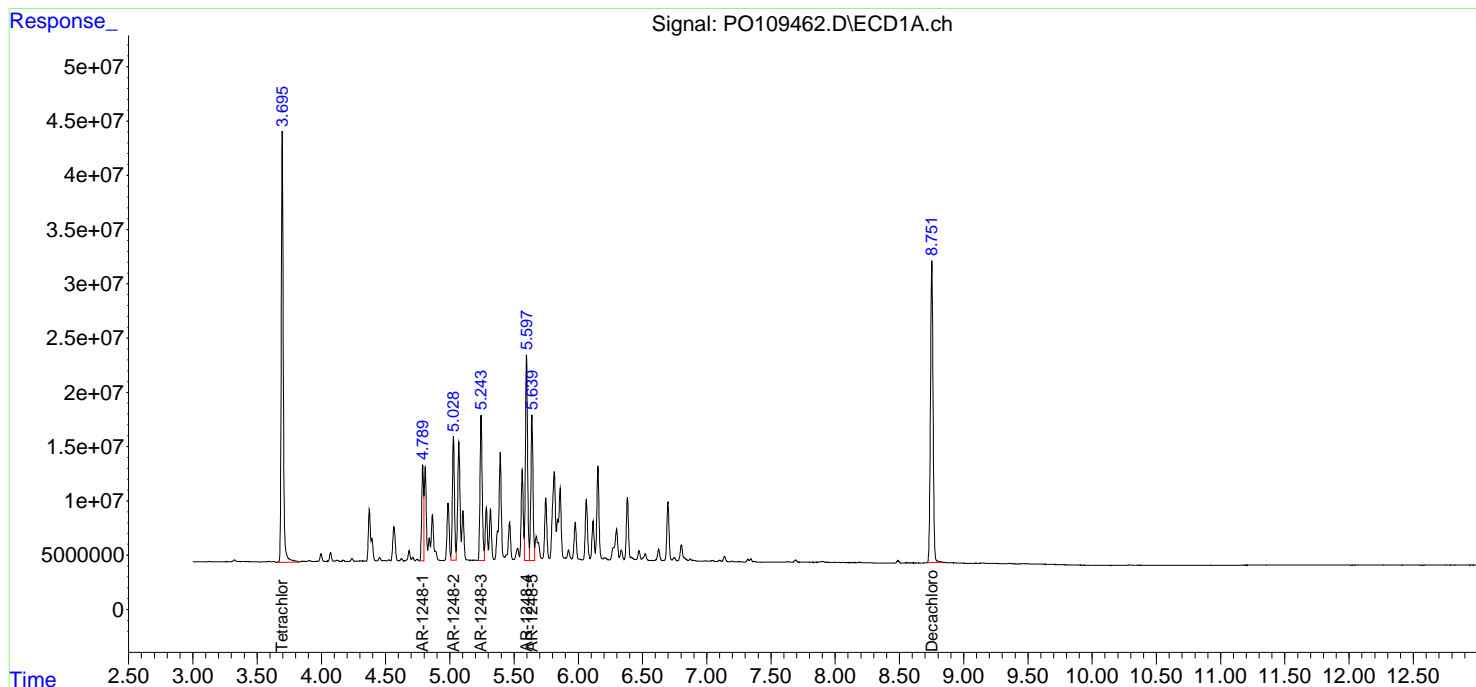
(f)=RT Delta > 1/2 Window (#)=Amounts differ by > 25% (m)=manual int.

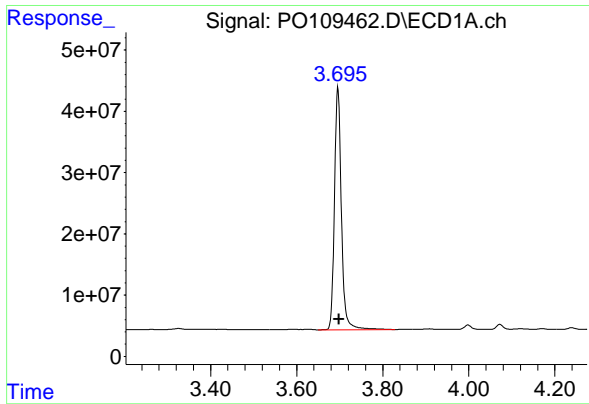
Data Path : Z:\pestpcbsrv\HPCHEM1\ECD_O\Data\PO022425\
 Data File : PO109462.D
 Signal(s) : Signal #1: ECD1A.ch Signal #2: ECD2B.ch
 Acq On : 24 Feb 2025 10:09
 Operator : YP/AJ
 Sample : AR1248CCC500
 Misc :
 ALS Vial : 5 Sample Multiplier: 1

Instrument :
 ECD_O
 ClientSampleId :
 AR1248CCC500

Integration File signal 1: autoint1.e
 Integration File signal 2: autoint2.e
 Quant Time: Feb 25 00:32:12 2025
 Quant Method : Z:\pestpcbsrv\HPCHEM1\ECD_O\methods\PO022025.M
 Quant Title : GC EXTRACTABLES
 QLast Update : Fri Feb 21 04:40:23 2025
 Response via : Initial Calibration
 Integrator: ChemStation

Volume Inj. : 2 µl
 Signal #1 Phase : ZB-MR1 Signal #2 Phase: ZB-MR2
 Signal #1 Info : 30Mx0.32mmx 0.50µm Signal #2 Info : 30M x 0.32mm x 0.25µm

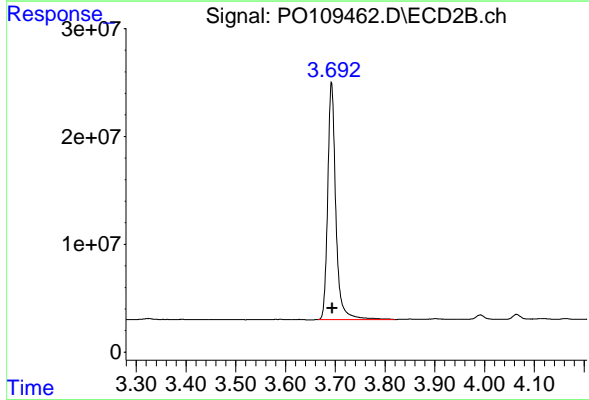




#1 Tetrachloro-m-xylene

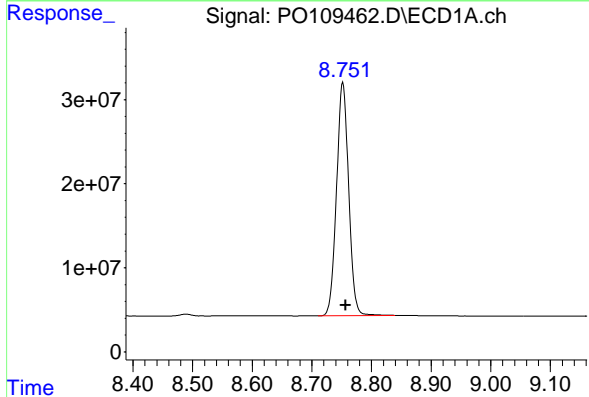
R.T.: 3.696 min
 Delta R.T.: -0.002 min
 Response: 444431705
 Conc: 46.95 ng/ml

Instrument :
 ECD_O
 ClientSampleId :
 AR1248CCC500



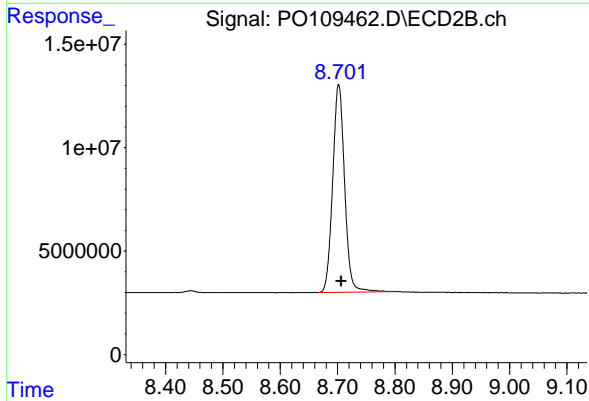
#1 Tetrachloro-m-xylene

R.T.: 3.692 min
 Delta R.T.: -0.001 min
 Response: 248873845
 Conc: 47.55 ng/ml



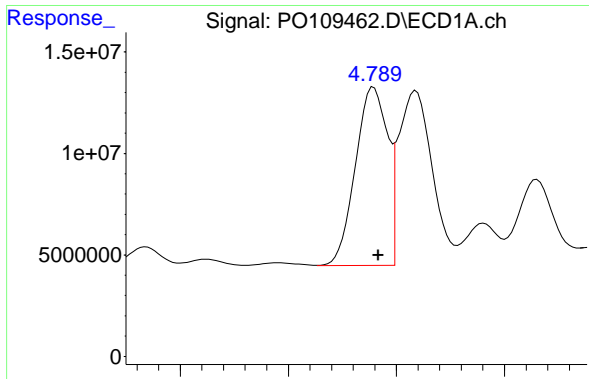
#2 Decachlorobiphenyl

R.T.: 8.752 min
 Delta R.T.: -0.005 min
 Response: 392580945
 Conc: 45.64 ng/ml



#2 Decachlorobiphenyl

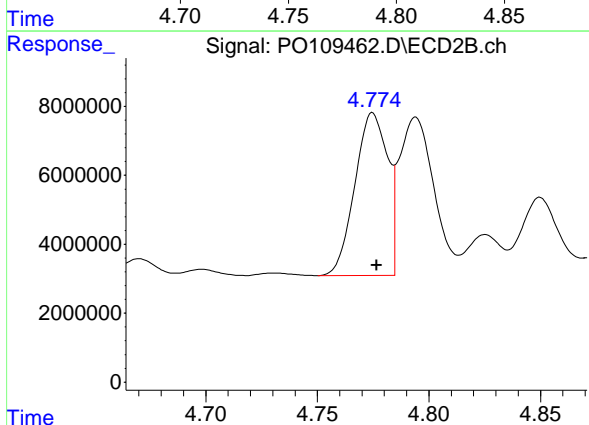
R.T.: 8.702 min
 Delta R.T.: -0.005 min
 Response: 145891104
 Conc: 45.82 ng/ml



#21 AR-1248-1

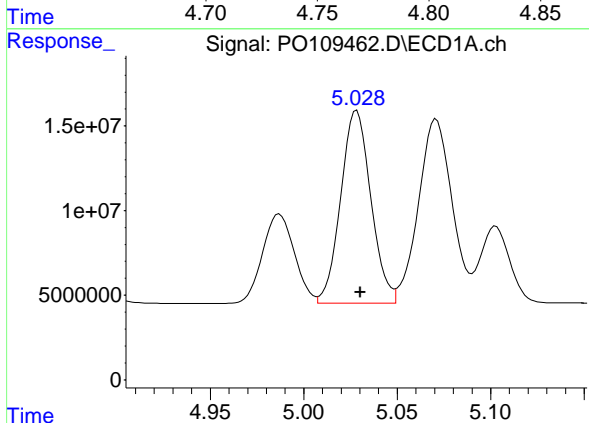
R.T.: 4.789 min
 Delta R.T.: -0.002 min
 Response: 90940511
 Conc: 455.82 ng/ml

Instrument :
 ECD_O
 ClientSampleId :
 AR1248CCC500



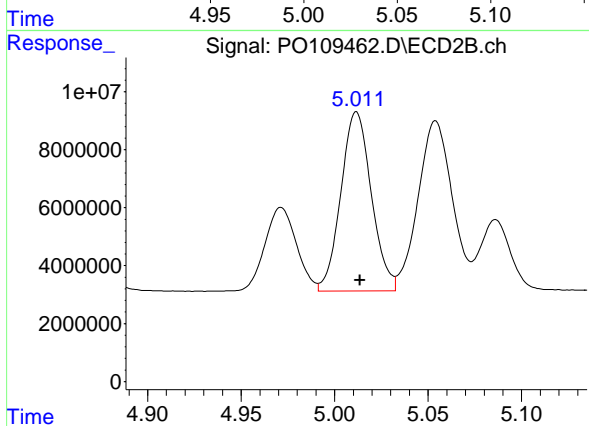
#21 AR-1248-1

R.T.: 4.775 min
 Delta R.T.: -0.002 min
 Response: 48181390
 Conc: 479.29 ng/ml



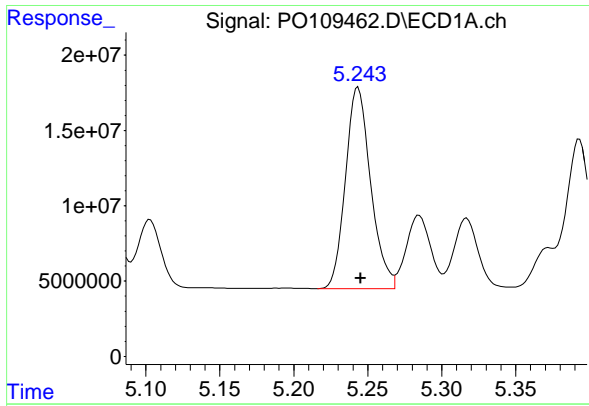
#22 AR-1248-2

R.T.: 5.028 min
 Delta R.T.: -0.002 min
 Response: 128215857
 Conc: 460.73 ng/ml



#22 AR-1248-2

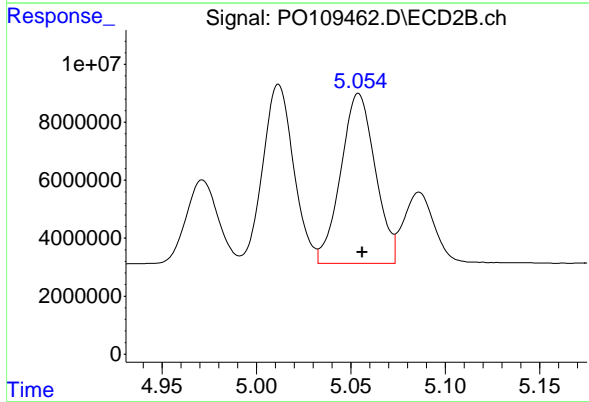
R.T.: 5.012 min
 Delta R.T.: -0.002 min
 Response: 70220066
 Conc: 482.68 ng/ml



#23 AR-1248-3

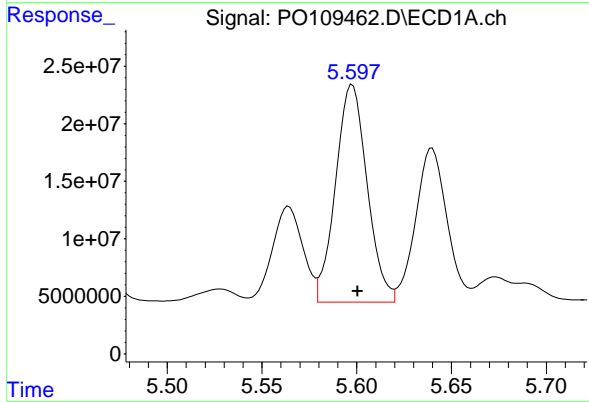
R.T.: 5.243 min
 Delta R.T.: -0.002 min
 Response: 158264017
 Conc: 452.99 ng/ml

Instrument :
 ECD_O
 ClientSampleId :
 AR1248CCC500



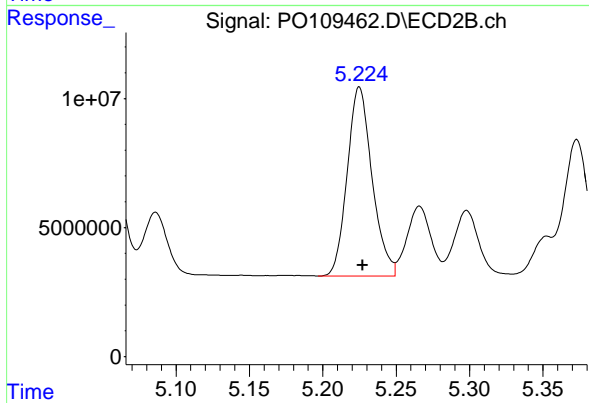
#23 AR-1248-3

R.T.: 5.054 min
 Delta R.T.: -0.002 min
 Response: 74423251
 Conc: 480.12 ng/ml



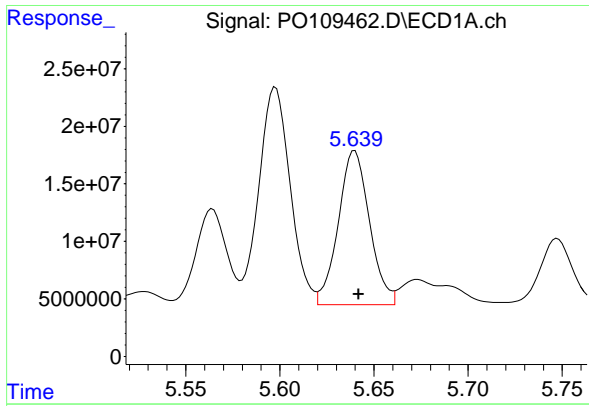
#24 AR-1248-4

R.T.: 5.598 min
 Delta R.T.: -0.003 min
 Response: 219208844
 Conc: 459.47 ng/ml



#24 AR-1248-4

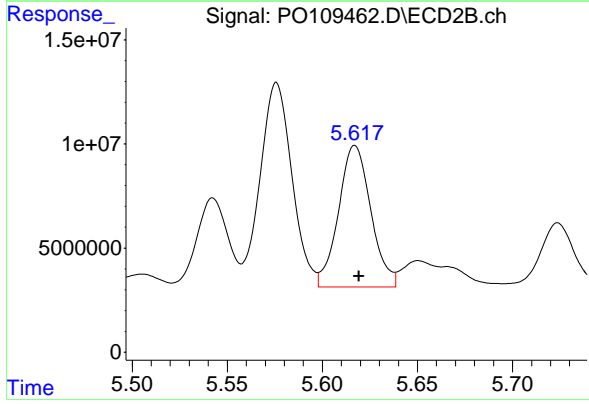
R.T.: 5.225 min
 Delta R.T.: -0.002 min
 Response: 86451949
 Conc: 478.17 ng/ml



#25 AR-1248-5

R.T.: 5.640 min
 Delta R.T.: -0.002 min
 Response: 154470391
 Conc: 451.00 ng/ml

Instrument :
 ECD_O
 ClientSampleId :
 AR1248CCC500



#25 AR-1248-5

R.T.: 5.617 min
 Delta R.T.: -0.002 min
 Response: 80556380
 Conc: 467.80 ng/ml