

Data Path : Z:\pestpcbsrv\HPCHEM1\ECD_0\Data\P0022624\
 Data File : P0102116.D
 Signal(s) : Signal #1: ECD1A.ch Signal #2: ECD2B.ch
 Acq On : 27 Feb 2024 04:06
 Operator : YP/AJ
 Sample : I.BLK
 Misc :
 ALS Vial : 2 Sample Multiplier: 1

Instrument :
 ECD_0
ClientSampleId :
 I.BLK

Manual Integrations
APPROVED

Reviewed By :Yogesh Patel 02/27/2024
 Supervised By :Ankita Jodhani 02/27/2024

Integration File signal 1: autoint1.e
 Integration File signal 2: autoint2.e
 Quant Time: Feb 27 04:25:51 2024
 Quant Method : Z:\pestpcbsrv\HPCHEM1\ECD_0\methods\P0022324.M
 Quant Title : GC EXTRACTABLES
 QLast Update : Sun Feb 25 11:24:58 2024
 Response via : Initial Calibration
 Integrator: ChemStation

Volume Inj. : 2 µl
 Signal #1 Phase : ZB-MR1 Signal #2 Phase: ZB-MR2
 Signal #1 Info : 30Mx0.32mmx 0.50µ Signal #2 Info : 30M x 0.32mm x 0.25µm

Compound	RT#1	RT#2	Resp#1	Resp#2	ng/ml	ng/ml

System Monitoring Compounds						
1) SA Tetrachlo...	4.279	3.390	80990736	53390052	17.464	16.431
2) SA Decachlor...	9.828	8.265	44240989	33829437	17.374m	16.352

Target Compounds

(f)=RT Delta > 1/2 Window (#)=Amounts differ by > 25% (m)=manual int.

Data Path : Z:\pestpcbsrv\HPCHEM1\ECD_0\Data\PO022624\
 Data File : PO102116.D
 Signal(s) : Signal #1: ECD1A.ch Signal #2: ECD2B.ch
 Acq On : 27 Feb 2024 04:06
 Operator : YP/AJ
 Sample : I.BLK
 Misc :
 ALS Vial : 2 Sample Multiplier: 1

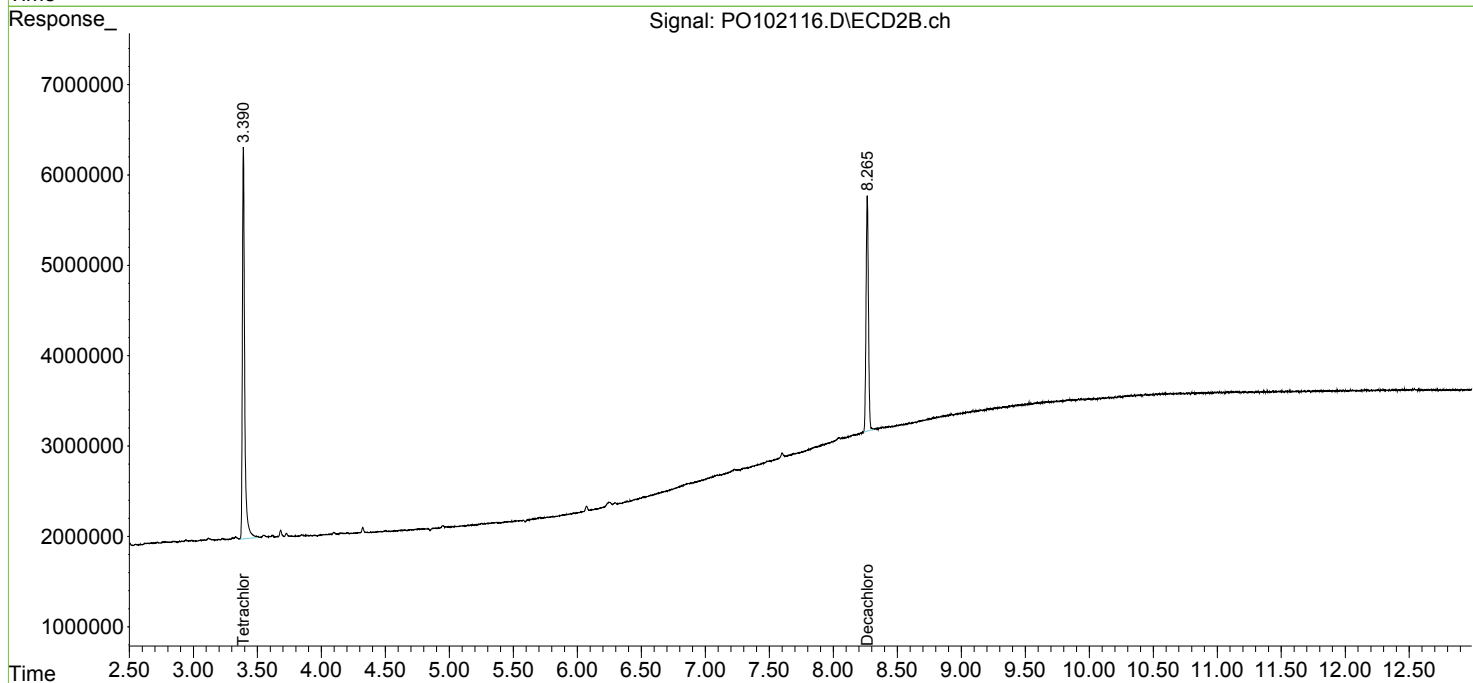
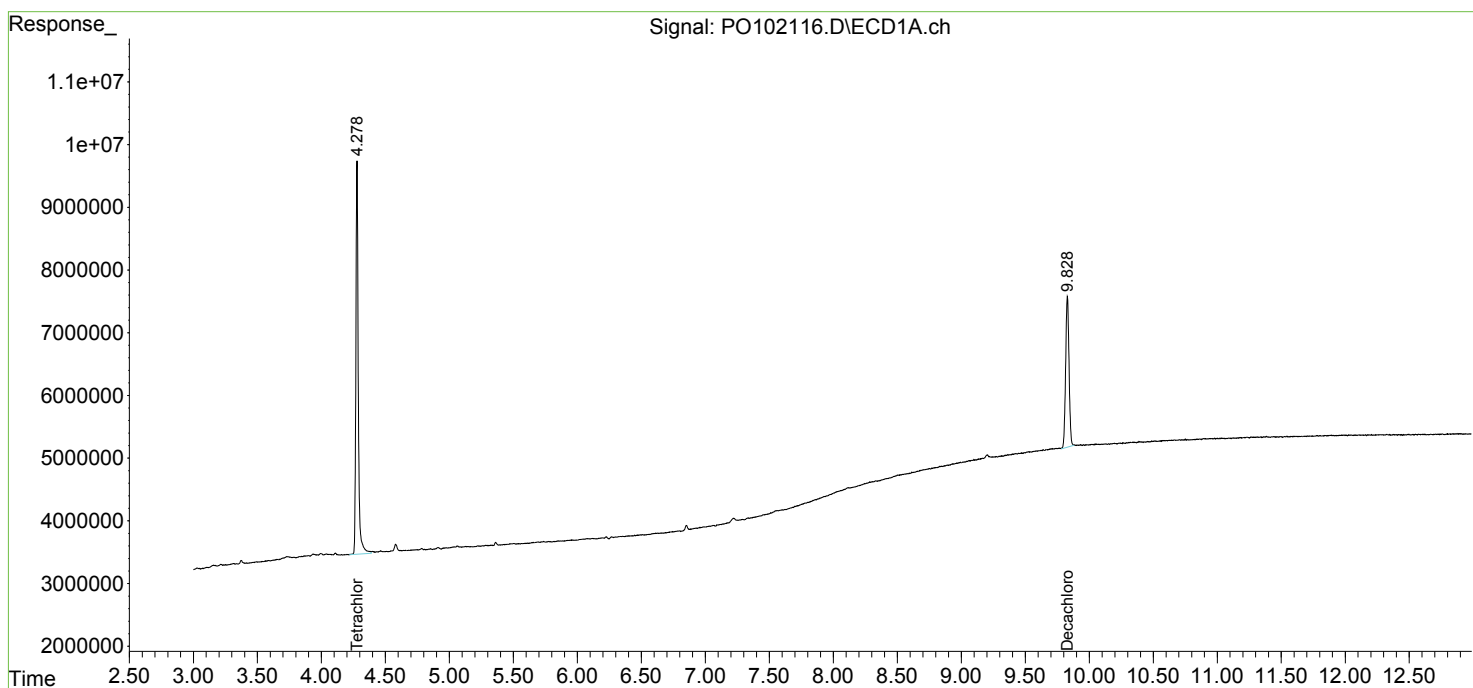
Instrument :
 ECD_0
ClientSampleID :
 I.BLK

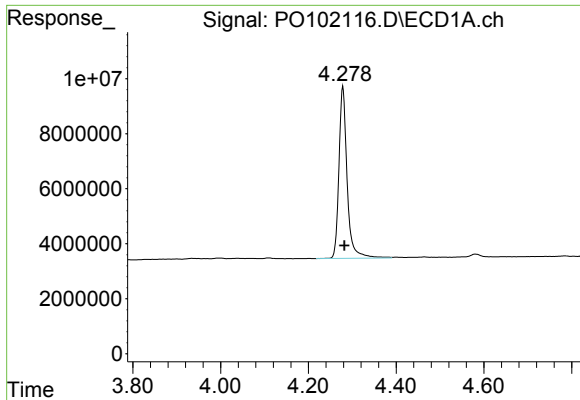
Manual Integrations
APPROVED

Reviewed By :Yogesh Patel 02/27/2024
 Supervised By :Ankita Jodhani 02/27/2024

Integration File signal 1: autoint1.e
 Integration File signal 2: autoint2.e
 Quant Time: Feb 27 04:25:51 2024
 Quant Method : Z:\pestpcbsrv\HPCHEM1\ECD_0\methods\PO022324.M
 Quant Title : GC EXTRACTABLES
 QLast Update : Sun Feb 25 11:24:58 2024
 Response via : Initial Calibration
 Integrator: ChemStation

Volume Inj. : 2 µl
 Signal #1 Phase : ZB-MR1 Signal #2 Phase: ZB-MR2
 Signal #1 Info : 30Mx0.32mmx 0.50µ Signal #2 Info : 30M x 0.32mm x 0.25µm





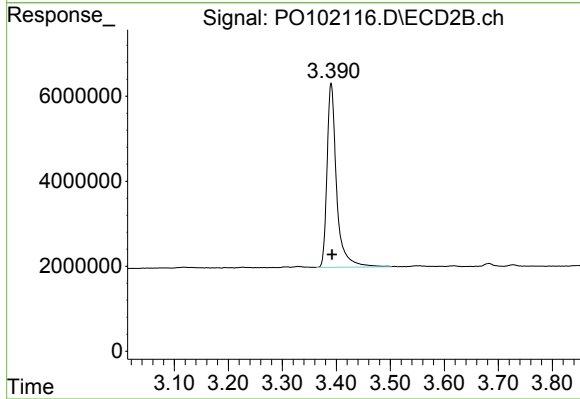
#1 Tetrachloro-m-xylene

R.T.: 4.279 min
 Delta R.T.: -0.003 min
 Response: 80990736
 Conc: 17.46 ng/ml

Instrument :
 ECD_O
 ClientSampleId :
 I.BLK

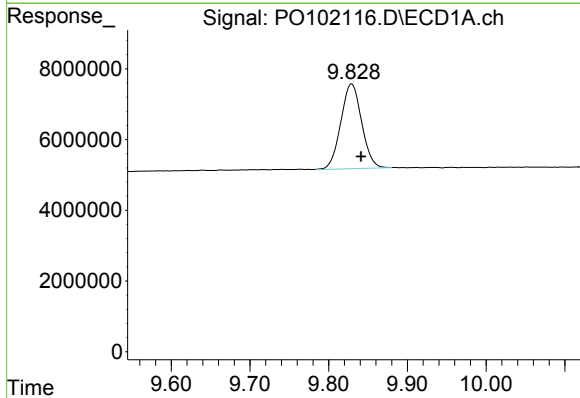
Manual Integrations
 APPROVED

Reviewed By :Yogesh Patel 02/27/2024
 Supervised By :Ankita Jodhani 02/27/2024



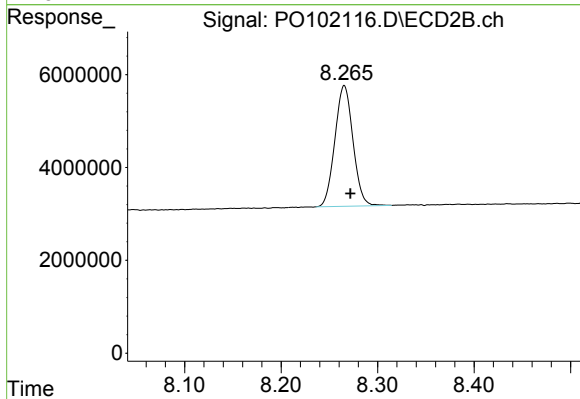
#1 Tetrachloro-m-xylene

R.T.: 3.390 min
 Delta R.T.: -0.002 min
 Response: 53390052
 Conc: 16.43 ng/ml



#2 Decachlorobiphenyl

R.T.: 9.828 min
 Delta R.T.: -0.012 min
 Response: 44240989
 Conc: 17.37 ng/ml m



#2 Decachlorobiphenyl

R.T.: 8.265 min
 Delta R.T.: -0.006 min
 Response: 33829437
 Conc: 16.35 ng/ml