

Data Path : Z:\pestpcbsrv\HPCHEM1\ECD_0\Data\P0022719\
 Data File : P0054113.D
 Signal(s) : Signal #1: ECD1A.CH Signal #2: ECD2B.CH
 Acq On : 27 Feb 2019 23:25
 Operator : SM/SJ
 Sample : K1633-03MSD
 Misc :
 ALS Vial : 26 Sample Multiplier: 1

Instrument :
 ECD_0
 ClientSampleId :
 SR-11-SMSD

Integration File signal 1: autoint1.e
 Integration File signal 2: autoint2.e
 Quant Time: Feb 28 00:25:49 2019
 Quant Method : Z:\pestpcbsrv\HPCHEM1\ECD_0\methods\P0022619.M
 Quant Title : GC EXTRACTABLES
 QLast Update : Wed Feb 27 04:24:32 2019
 Response via : Initial Calibration
 Integrator: ChemStation 6890 Scale Mode: Small noise peaks clipped

Volume Inj. : 2 µl
 Signal #1 Phase : ZB-MR1 Signal #2 Phase: ZB-MR2
 Signal #1 Info : 30Mx0.32mmx 0.50µ Signal #2 Info : 30M x 0.32mm x 0.25µm

Compound	RT#1	RT#2	Resp#1	Resp#2	ng/ml	ng/ml
System Monitoring Compounds						
1) SA Tetrachlo...	4.047	3.128	78629723	6567790	36.661	25.618 #
2) SA Decachlor...	9.382	7.705	21844350	5231748	20.017	19.692
Target Compounds						
3) L1 AR-1016-1	5.181	4.096	16115498	4542324	320.602	450.207 #
4) L1 AR-1016-2	5.202	4.110	24650687	4527460	329.678	289.800
5) L1 AR-1016-3	5.260	4.266	13932480	2319623	309.406	272.458
6) L1 AR-1016-4	5.359	4.309	11107578	1877043	310.487	293.256
7) L1 AR-1016-5	5.640	4.496	10165516	1674675	320.513	194.718 #
8) L2 AR-1221-1	4.254	3.318	225254	332152	7.204	67.580 #
9) L2 AR-1221-2	4.343	3.395	3105316	374747	147.361	108.077 #
10) L2 AR-1221-3	4.417	3.461	9925802	1336773	134.315	110.789
11) L3 AR-1232-1	4.417	3.461	9925802	1336773	318.273	260.050
12) L3 AR-1232-2	4.922	4.110	32094910	4527460	2319.142	728.063 #
13) L3 AR-1232-3	5.202	4.266	24650687	2319623	879.842	688.944
14) L3 AR-1232-4	5.359	4.344	11107578	2033617	839.531	747.930
15) L3 AR-1232-5	5.441	4.496	7259672	1674675	882.409	513.101 #
16) L4 AR-1242-1	5.181	4.096	16115498	4542324	395.644	560.184 #
17) L4 AR-1242-2	5.202	4.110	24650687	4527460	402.052	351.633
18) L4 AR-1242-3	5.260	4.266	13932480	2319623	379.588	330.629
19) L4 AR-1242-4	5.359	4.344	11107578	2033617	380.898	314.484
20) L4 AR-1242-5	0.000	4.817	0	1712987	N.D.	201.011 #
21) L5 AR-1248-1	5.181	4.096	16115498	4542324	520.272	691.386 #
22) L5 AR-1248-2	5.441	4.309	7259672	1877043	186.381	207.235
23) L5 AR-1248-3	5.640	4.344	10165516	2033617	229.657	222.166
24) L5 AR-1248-4	6.004	4.496	5165118	1674675	105.441	146.233 #
25) L5 AR-1248-5	0.000	4.858	0	255441	N.D.	21.862 #
26) L6 AR-1254-1	6.004	4.817	5165118	1712987	122.462	107.502
27) L6 AR-1254-2	6.214	4.956	6170494	1527171	93.535	115.536
28) L6 AR-1254-3	6.578	5.335	2193617	3505973	31.792	164.481 #
29) L6 AR-1254-4	6.854	5.542	1898188	1701451	36.146	121.311 #
30) L6 AR-1254-5	7.266	5.930	17427659	5115445	342.505	285.379
31) L7 AR-1260-1	6.731	5.443	13008689	5970923	237.180	346.376 #
32) L7 AR-1260-2	6.984	5.627	15148906	7751705	218.622	370.736 #
33) L7 AR-1260-3	7.332	5.762	9894977	5158598	224.765	269.941
34) L7 AR-1260-4	7.557	6.205	10645007	2715650	225.037	222.255
35) L7 AR-1260-5	7.862	6.447	22165284	6435754	219.539	218.228
36) L8 AR-1262-1	7.332	5.963	9894977	3272084	122.492	148.213
37) L8 AR-1262-2	7.862	6.447	22165284	6435754	160.023	174.745
38) L8 AR-1262-3	8.155	6.707	8724789	1993245	295.413	137.129 #
39) L8 AR-1262-4	8.199	6.771	7911081	5150663	112.688	191.817 #
40) L8 AR-1262-5	8.780	7.254	5558183	1367580	115.179	109.941
41) L9 AR-1268-1	8.127	6.707	4553499	1993245	29.473	51.146 #

Data Path : Z:\pestpcbsrv\HPCHEM1\ECD_0\Data\P0022719\
 Data File : P0054113.D
 Signal(s) : Signal #1: ECD1A.CH Signal #2: ECD2B.CH
 Acq On : 27 Feb 2019 23:25
 Operator : SM/SJ
 Sample : K1633-03MSD
 Misc :
 ALS Vial : 26 Sample Multiplier: 1

Instrument :
 ECD_0
 ClientSampleId :
 SR-11-SMSD

Integration File signal 1: autoint1.e
 Integration File signal 2: autoint2.e
 Quant Time: Feb 28 00:25:49 2019
 Quant Method : Z:\pestpcbsrv\HPCHEM1\ECD_0\methods\P0022619.M
 Quant Title : GC EXTRACTABLES
 QLast Update : Wed Feb 27 04:24:32 2019
 Response via : Initial Calibration
 Integrator: ChemStation 6890 Scale Mode: Small noise peaks clipped

Volume Inj. : 2 µl
 Signal #1 Phase : ZB-MR1 Signal #2 Phase: ZB-MR2
 Signal #1 Info : 30Mx0.32mmx 0.50µ Signal #2 Info : 30M x 0.32mm x 0.25µm

	Compound	RT#1	RT#2	Resp#1	Resp#2	ng/ml	ng/ml
42)	L9 AR-1268-2	8.199	6.771	7911081	5150663	54.694	140.895 #
43)	L9 AR-1268-3	0.000	6.953	0	1284888	N.D.	41.698 #
44)	L9 AR-1268-4	8.780	7.254	5558183	1367580	110.847	107.736
45)	L9 AR-1268-5	9.118	7.508	1737575	501321	4.466	5.516

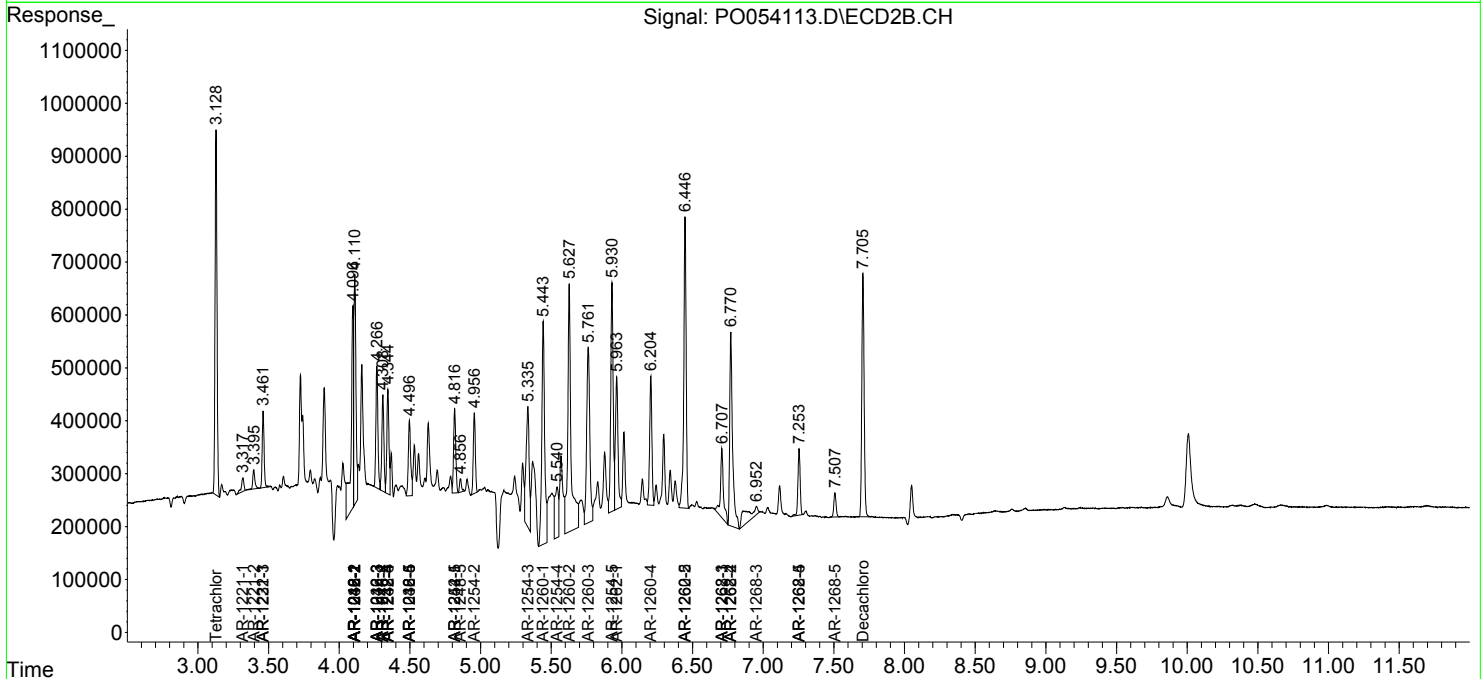
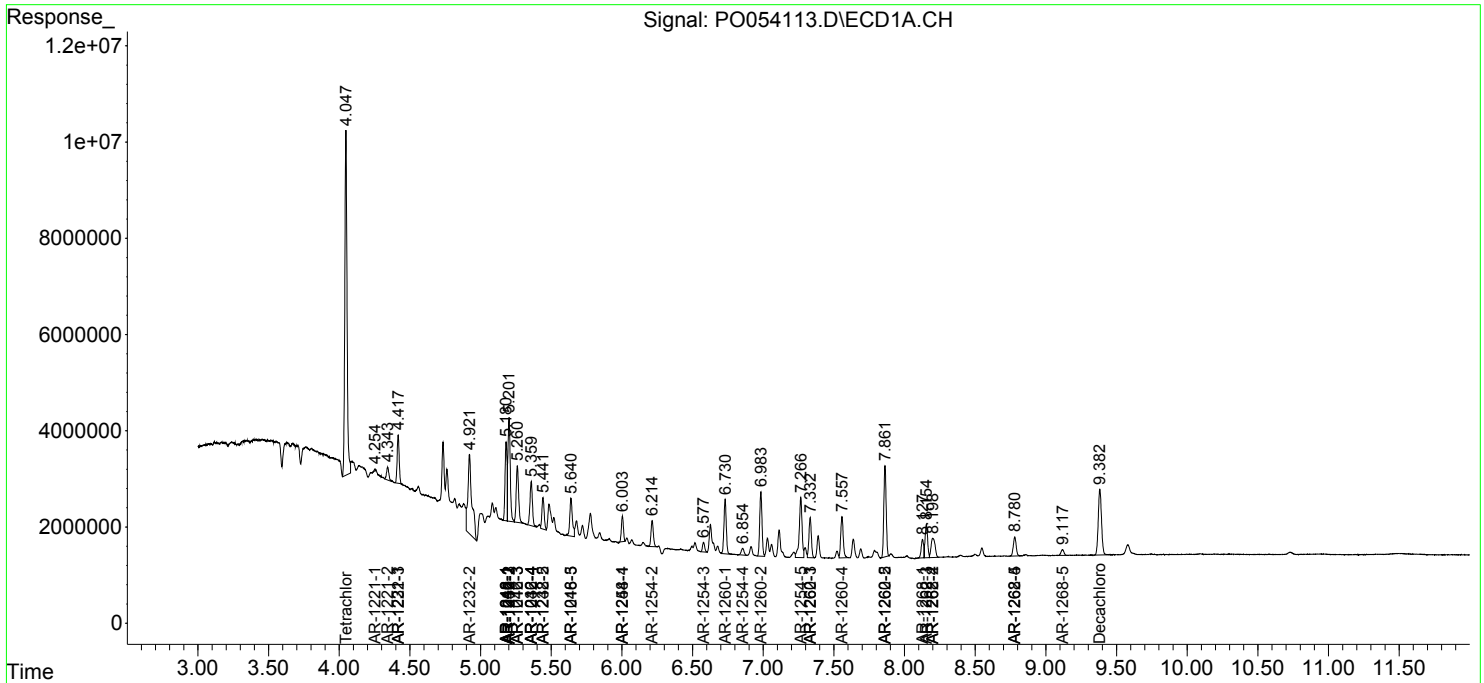
(f)=RT Delta > 1/2 Window (#)=Amounts differ by > 25% (m)=manual int.

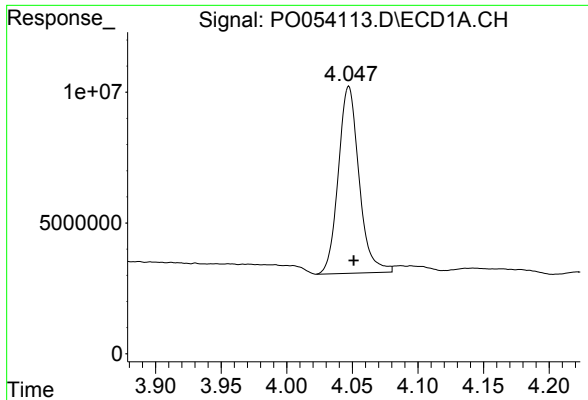
Data Path : Z:\pestpcbsrv\HPCHEM1\ECD_O\Data\P0022719\
 Data File : P0054113.D
 Signal(s) : Signal #1: ECD1A.CH Signal #2: ECD2B.CH
 Acq On : 27 Feb 2019 23:25
 Operator : SM/SJ
 Sample : K1633-03MSD
 Misc :
 ALS Vial : 26 Sample Multiplier: 1

Instrument :
 ECD_O
 Client Sampled :
 SR-11-SMSD

Integration File signal 1: autoint1.e
 Integration File signal 2: autoint2.e
 Quant Time: Feb 28 00:25:49 2019
 Quant Method : Z:\pestpcbsrv\HPCHEM1\ECD_O\methods\P0022619.M
 Quant Title : GC EXTRACTABLES
 QLast Update : Wed Feb 27 04:24:32 2019
 Response via : Initial Calibration
 Integrator: ChemStation 6890 Scale Mode: Small noise peaks clipped

Volume Inj. : 2 µl
 Signal #1 Phase : ZB-MR1 Signal #2 Phase: ZB-MR2
 Signal #1 Info : 30Mx0.32mmx 0.50µ Signal #2 Info : 30M x 0.32mm x 0.25µm

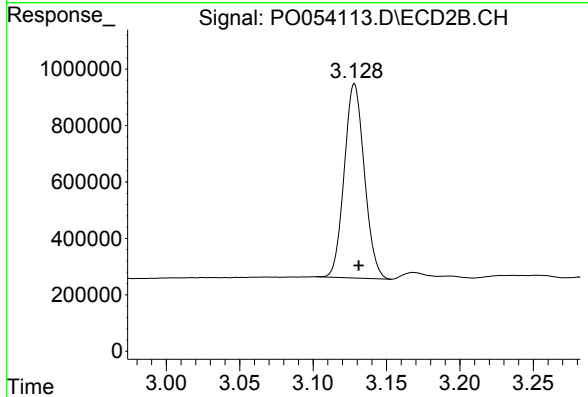




#1 Tetrachloro-m-xylene

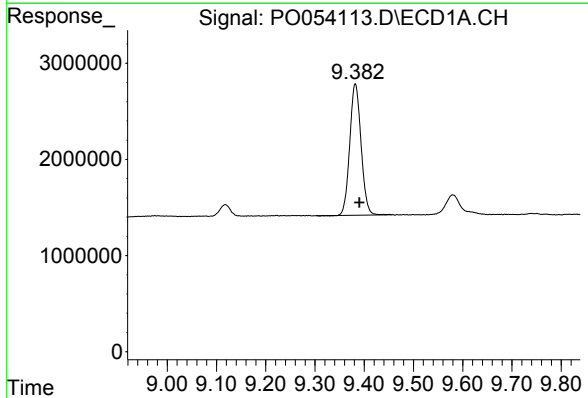
R.T.: 4.047 min
Delta R.T.: -0.004 min
Response: 78629723
Conc: 36.66 ng/ml

Instrument :
ECD_O
ClientSampleId :
SR-11-SMSD



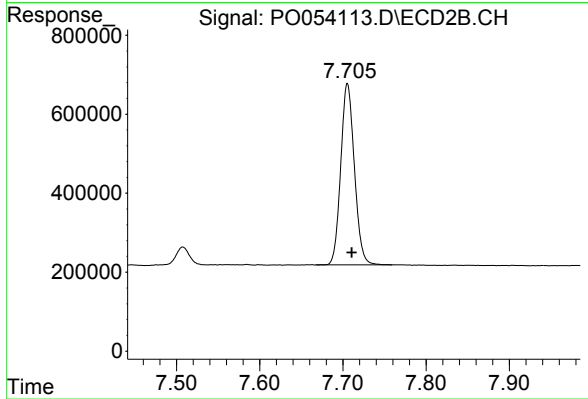
#1 Tetrachloro-m-xylene

R.T.: 3.128 min
Delta R.T.: -0.003 min
Response: 6567790
Conc: 25.62 ng/ml



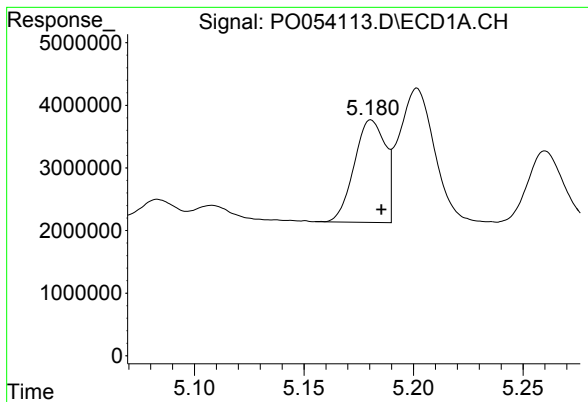
#2 Decachlorobiphenyl

R.T.: 9.382 min
Delta R.T.: -0.008 min
Response: 21844350
Conc: 20.02 ng/ml



#2 Decachlorobiphenyl

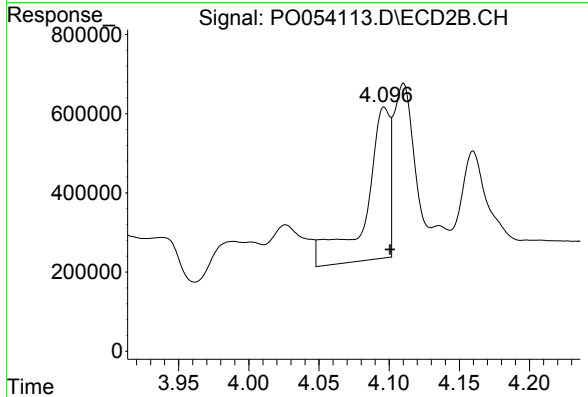
R.T.: 7.705 min
Delta R.T.: -0.005 min
Response: 5231748
Conc: 19.69 ng/ml



#3 AR-1016-1

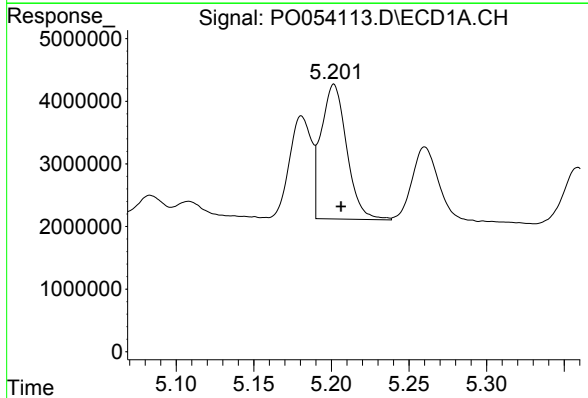
R.T.: 5.181 min
 Delta R.T.: -0.005 min
 Response: 16115498
 Conc: 320.60 ng/ml

Instrument :
 ECD_O
 ClientSampled :
 SR-11-SMSD



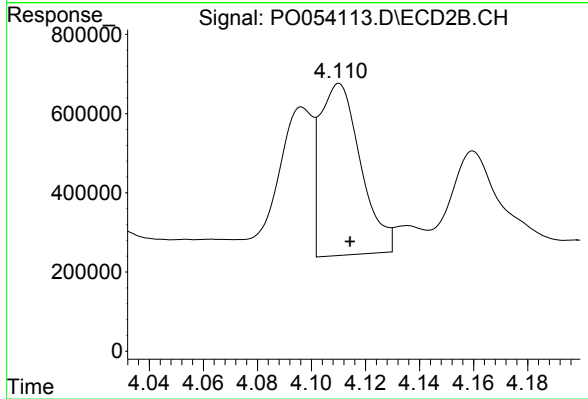
#3 AR-1016-1

R.T.: 4.096 min
 Delta R.T.: -0.004 min
 Response: 4542324
 Conc: 450.21 ng/ml



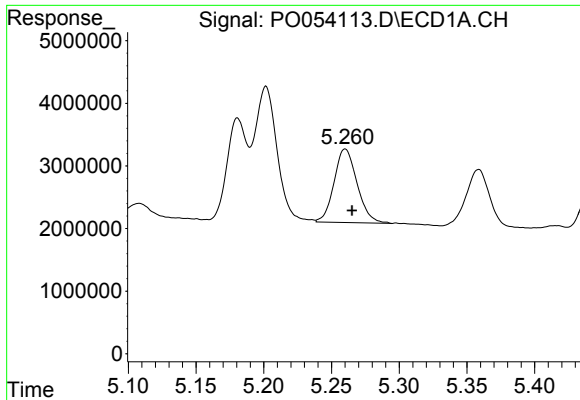
#4 AR-1016-2

R.T.: 5.202 min
 Delta R.T.: -0.005 min
 Response: 24650687
 Conc: 329.68 ng/ml



#4 AR-1016-2

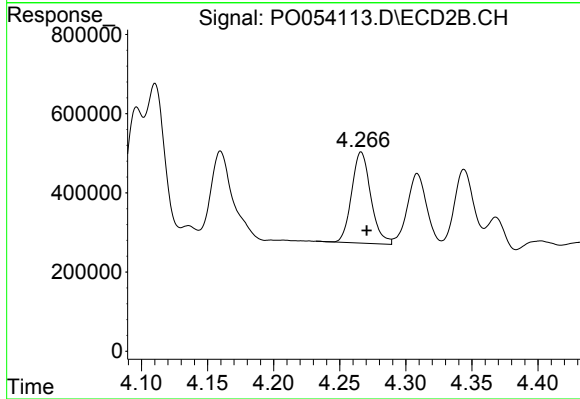
R.T.: 4.110 min
 Delta R.T.: -0.004 min
 Response: 4527460
 Conc: 289.80 ng/ml



#5 AR-1016-3

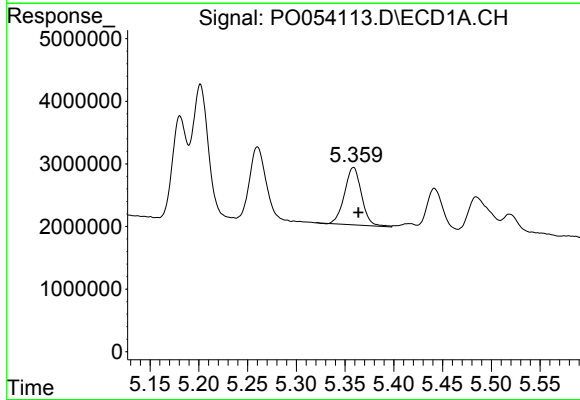
R.T.: 5.260 min
 Delta R.T.: -0.005 min
 Response: 13932480
 Conc: 309.41 ng/ml

Instrument :
 ECD_O
 ClientSampled :
 SR-11-SMSD



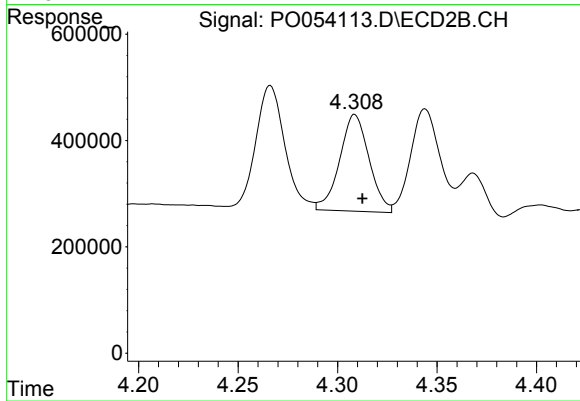
#5 AR-1016-3

R.T.: 4.266 min
 Delta R.T.: -0.004 min
 Response: 2319623
 Conc: 272.46 ng/ml



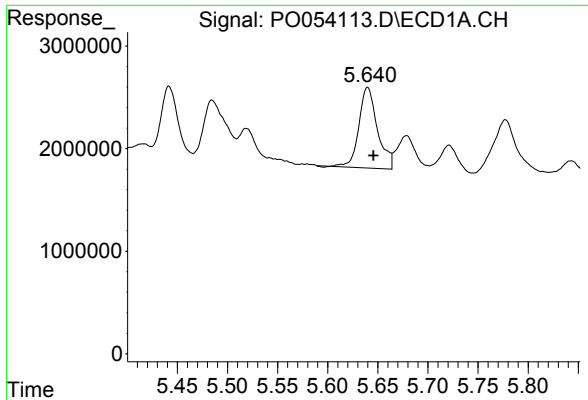
#6 AR-1016-4

R.T.: 5.359 min
 Delta R.T.: -0.005 min
 Response: 11107578
 Conc: 310.49 ng/ml



#6 AR-1016-4

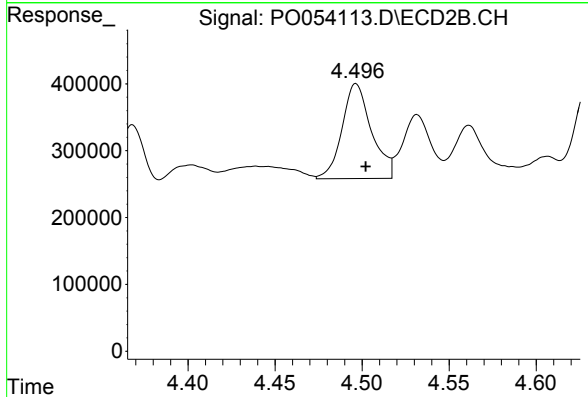
R.T.: 4.309 min
 Delta R.T.: -0.004 min
 Response: 1877043
 Conc: 293.26 ng/ml



#7 AR-1016-5

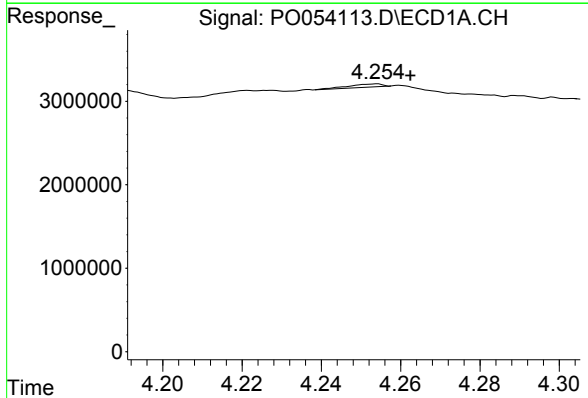
R.T.: 5.640 min
 Delta R.T.: -0.006 min
 Response: 10165516
 Conc: 320.51 ng/ml

Instrument :
 ECD_O
 ClientSampleId :
 SR-11-SMSD



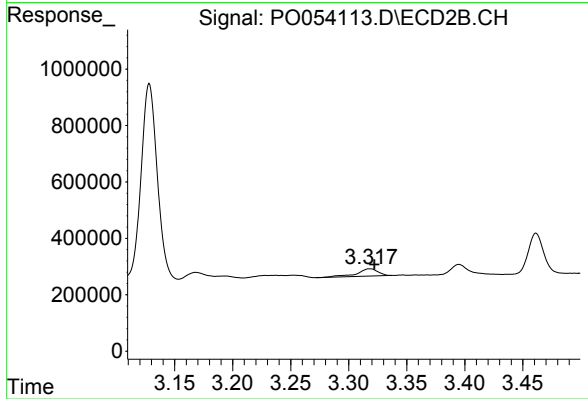
#7 AR-1016-5

R.T.: 4.496 min
 Delta R.T.: -0.006 min
 Response: 1674675
 Conc: 194.72 ng/ml



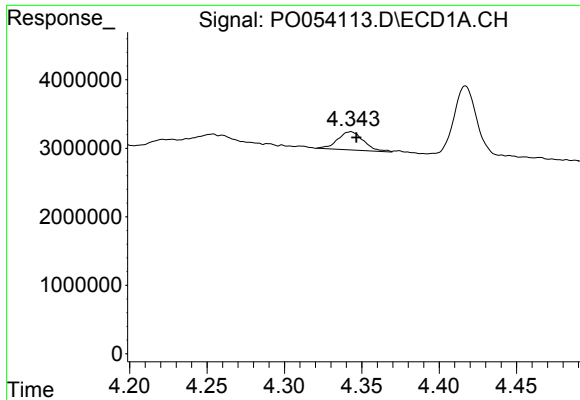
#8 AR-1221-1

R.T.: 4.254 min
 Delta R.T.: -0.008 min
 Response: 225254
 Conc: 7.20 ng/ml



#8 AR-1221-1

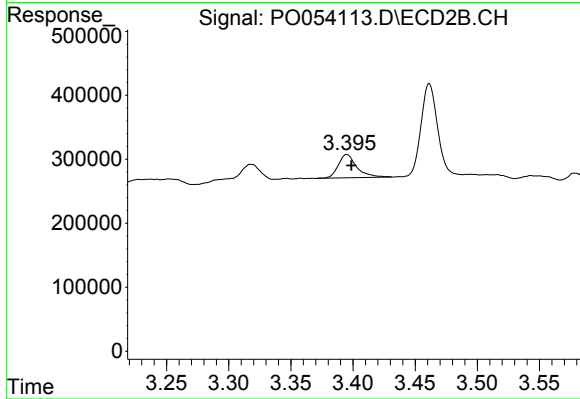
R.T.: 3.318 min
 Delta R.T.: -0.004 min
 Response: 332152
 Conc: 67.58 ng/ml



#9 AR-1221-2

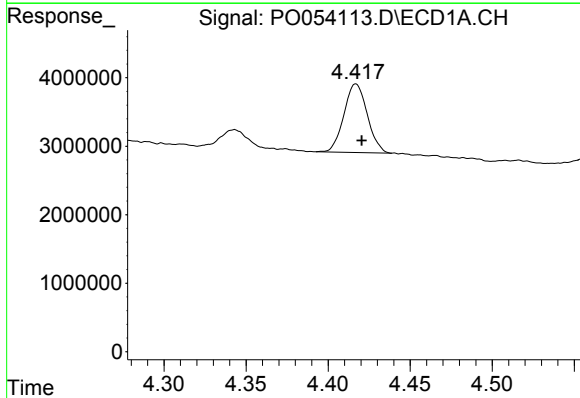
R.T.: 4.343 min
 Delta R.T.: -0.003 min
 Response: 3105316
 Conc: 147.36 ng/ml

Instrument :
 ECD_O
 ClientSampleId :
 SR-11-SMSD



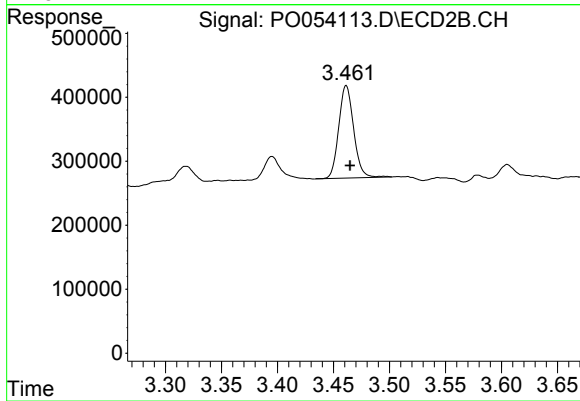
#9 AR-1221-2

R.T.: 3.395 min
 Delta R.T.: -0.003 min
 Response: 374747
 Conc: 108.08 ng/ml



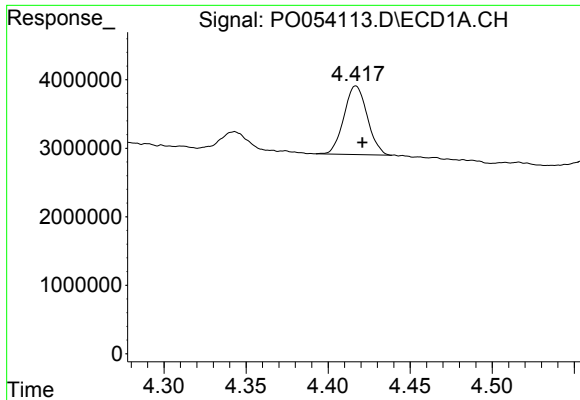
#10 AR-1221-3

R.T.: 4.417 min
 Delta R.T.: -0.004 min
 Response: 9925802
 Conc: 134.32 ng/ml



#10 AR-1221-3

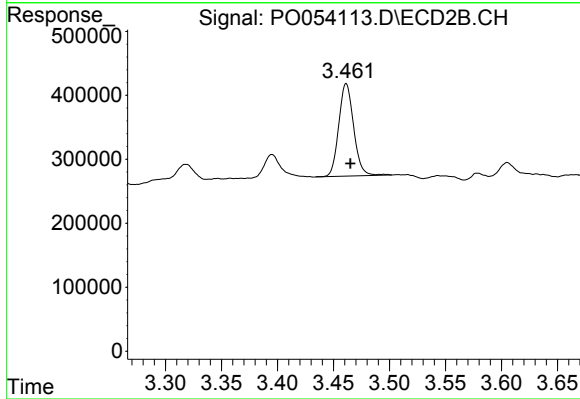
R.T.: 3.461 min
 Delta R.T.: -0.004 min
 Response: 1336773
 Conc: 110.79 ng/ml



#11 AR-1232-1

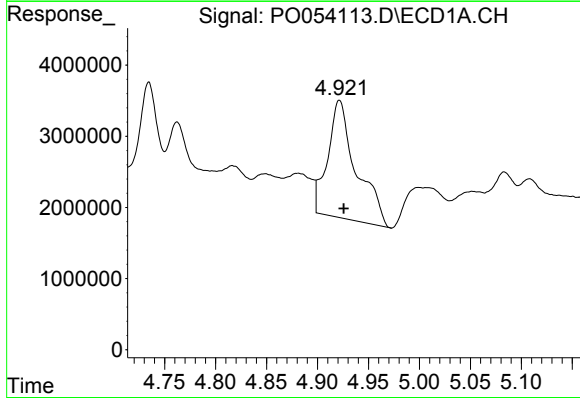
R.T.: 4.417 min
 Delta R.T.: -0.004 min
 Response: 9925802
 Conc: 318.27 ng/ml

Instrument :
 ECD_O
 ClientSampleId :
 SR-11-SMSD



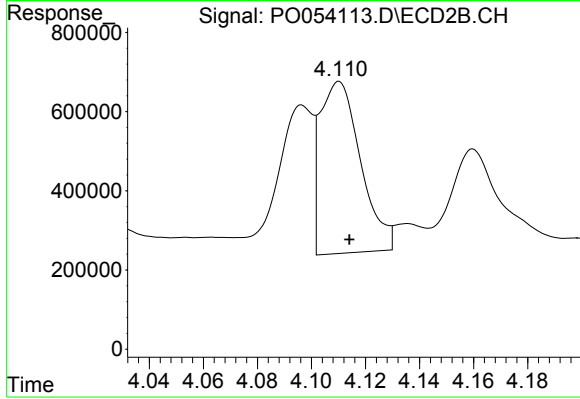
#11 AR-1232-1

R.T.: 3.461 min
 Delta R.T.: -0.004 min
 Response: 1336773
 Conc: 260.05 ng/ml



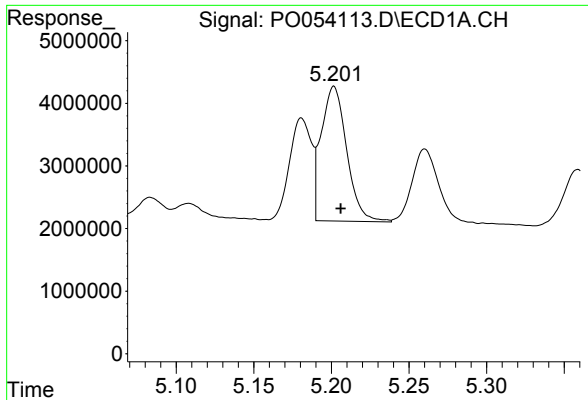
#12 AR-1232-2

R.T.: 4.922 min
 Delta R.T.: -0.004 min
 Response: 32094910
 Conc: 2319.14 ng/ml



#12 AR-1232-2

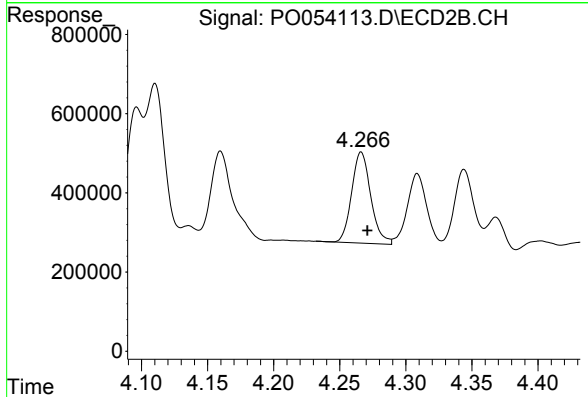
R.T.: 4.110 min
 Delta R.T.: -0.004 min
 Response: 4527460
 Conc: 728.06 ng/ml



#13 AR-1232-3

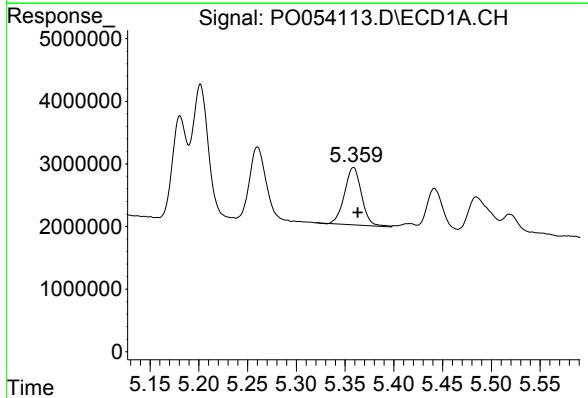
R.T.: 5.202 min
 Delta R.T.: -0.004 min
 Response: 24650687
 Conc: 879.84 ng/ml

Instrument :
 ECD_O
 ClientSampled :
 SR-11-SMSD



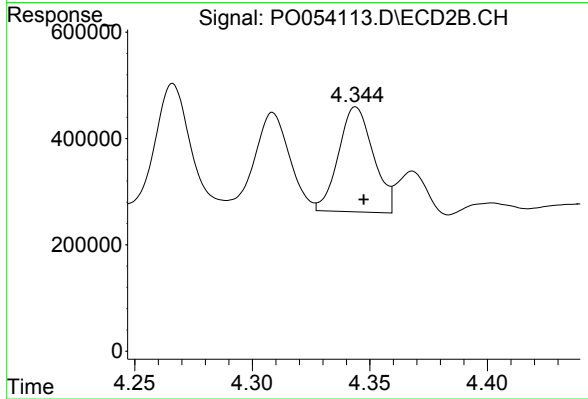
#13 AR-1232-3

R.T.: 4.266 min
 Delta R.T.: -0.005 min
 Response: 2319623
 Conc: 688.94 ng/ml



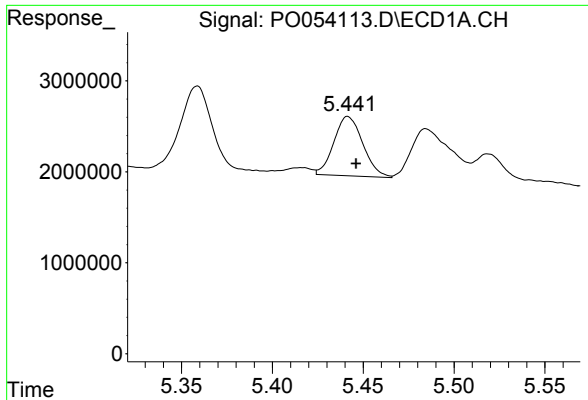
#14 AR-1232-4

R.T.: 5.359 min
 Delta R.T.: -0.004 min
 Response: 11107578
 Conc: 839.53 ng/ml



#14 AR-1232-4

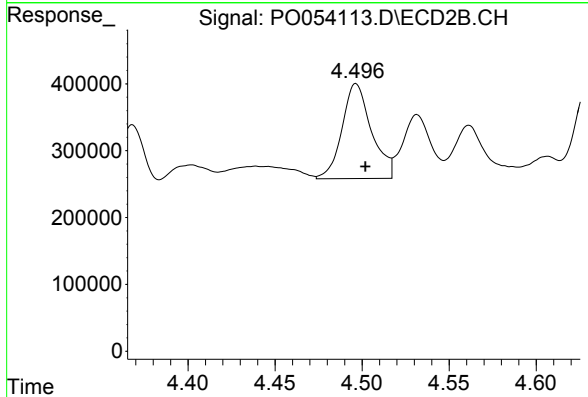
R.T.: 4.344 min
 Delta R.T.: -0.003 min
 Response: 2033617
 Conc: 747.93 ng/ml



#15 AR-1232-5

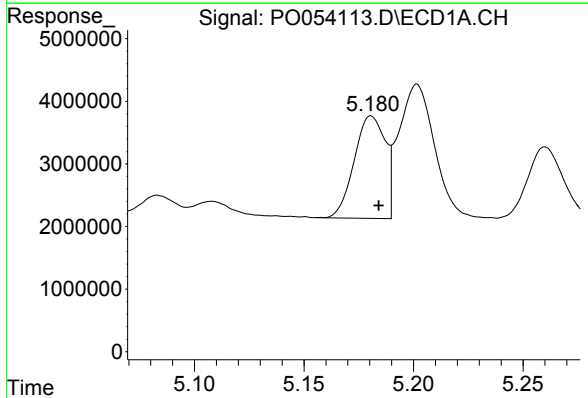
R.T.: 5.441 min
 Delta R.T.: -0.005 min
 Response: 7259672
 Conc: 882.41 ng/ml

Instrument :
 ECD_O
 ClientSampleId :
 SR-11-SMSD



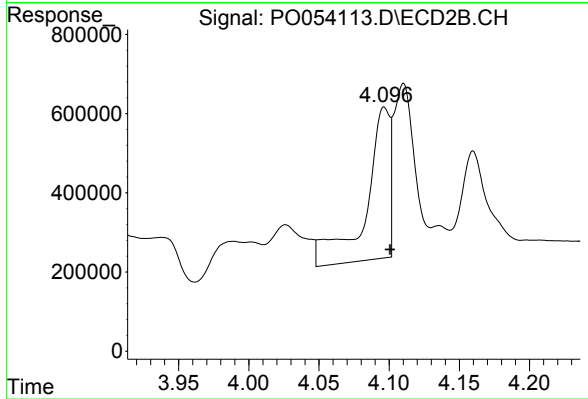
#15 AR-1232-5

R.T.: 4.496 min
 Delta R.T.: -0.006 min
 Response: 1674675
 Conc: 513.10 ng/ml



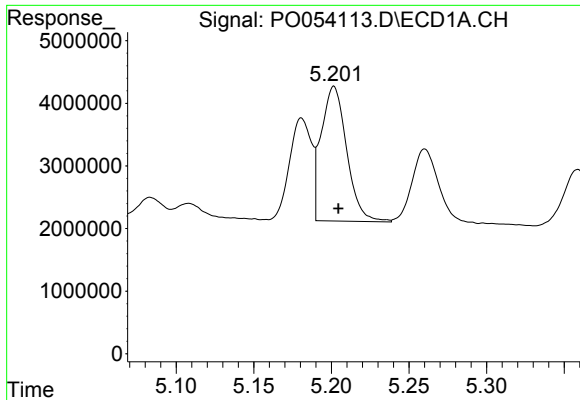
#16 AR-1242-1

R.T.: 5.181 min
 Delta R.T.: -0.003 min
 Response: 16115498
 Conc: 395.64 ng/ml



#16 AR-1242-1

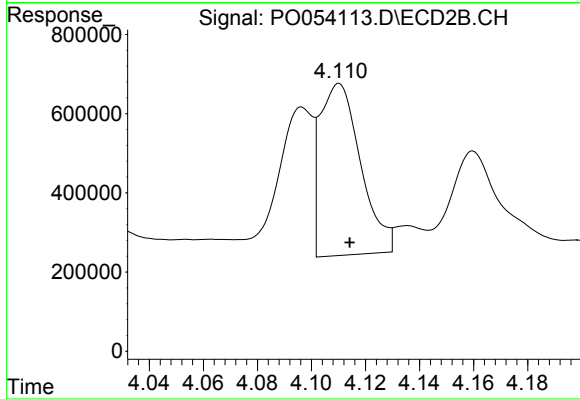
R.T.: 4.096 min
 Delta R.T.: -0.004 min
 Response: 4542324
 Conc: 560.18 ng/ml



#17 AR-1242-2

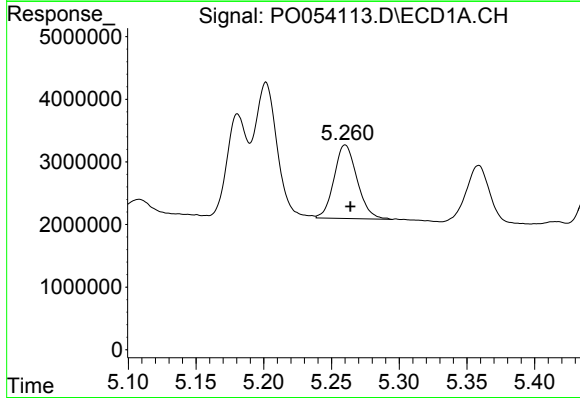
R.T.: 5.202 min
 Delta R.T.: -0.003 min
 Response: 24650687
 Conc: 402.05 ng/ml

Instrument :
 ECD_O
 ClientSampleId :
 SR-11-SMSD



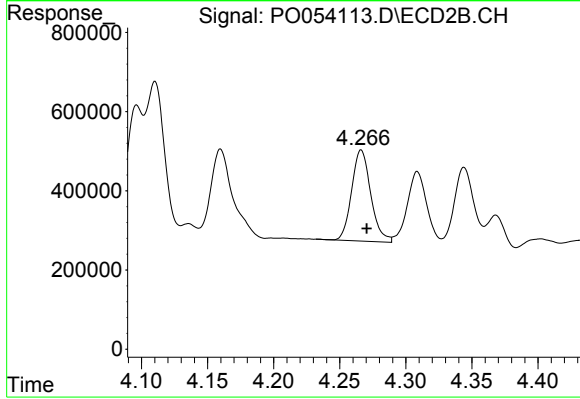
#17 AR-1242-2

R.T.: 4.110 min
 Delta R.T.: -0.004 min
 Response: 4527460
 Conc: 351.63 ng/ml



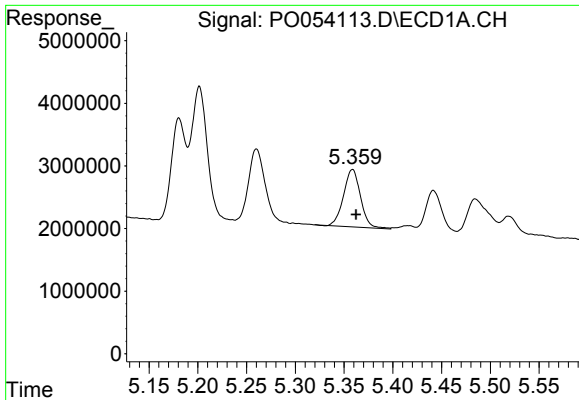
#18 AR-1242-3

R.T.: 5.260 min
 Delta R.T.: -0.004 min
 Response: 13932480
 Conc: 379.59 ng/ml



#18 AR-1242-3

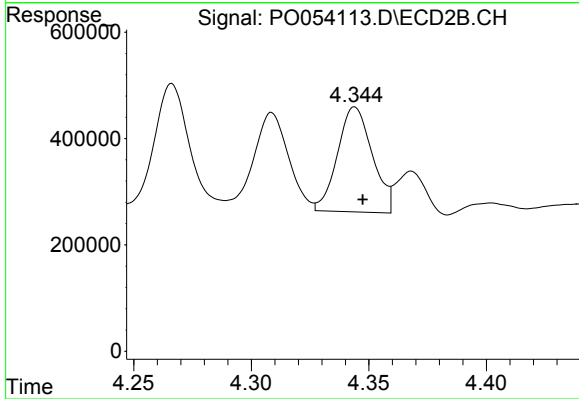
R.T.: 4.266 min
 Delta R.T.: -0.004 min
 Response: 2319623
 Conc: 330.63 ng/ml



#19 AR-1242-4

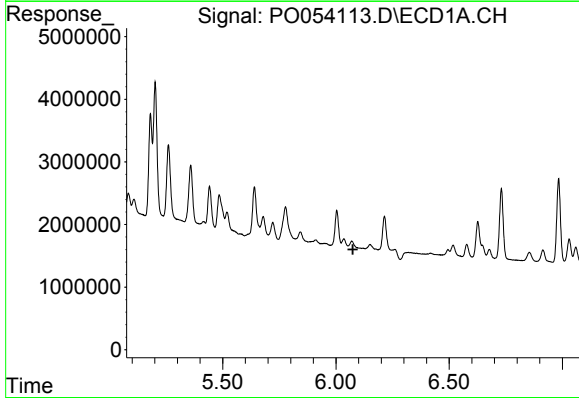
R.T.: 5.359 min
 Delta R.T.: -0.003 min
 Response: 11107578
 Conc: 380.90 ng/ml

Instrument :
 ECD_O
 ClientSampleId :
 SR-11-SMSD



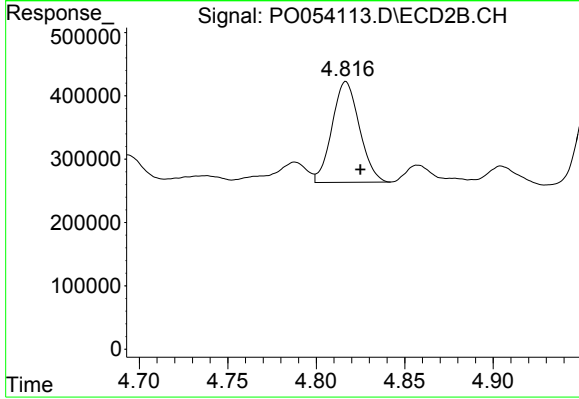
#19 AR-1242-4

R.T.: 4.344 min
 Delta R.T.: -0.003 min
 Response: 2033617
 Conc: 314.48 ng/ml



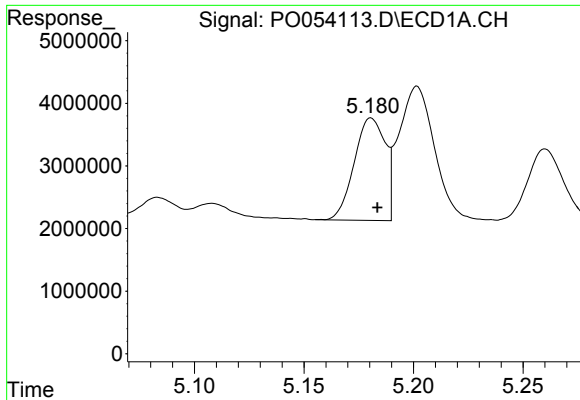
#20 AR-1242-5

R.T.: 0.000 min
 Exp R.T. : 6.074 min
 Response: 0
 Conc: N.D.



#20 AR-1242-5

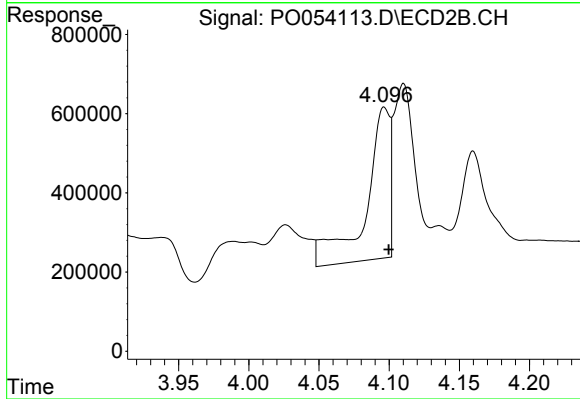
R.T.: 4.817 min
 Delta R.T.: -0.008 min
 Response: 1712987
 Conc: 201.01 ng/ml



#21 AR-1248-1

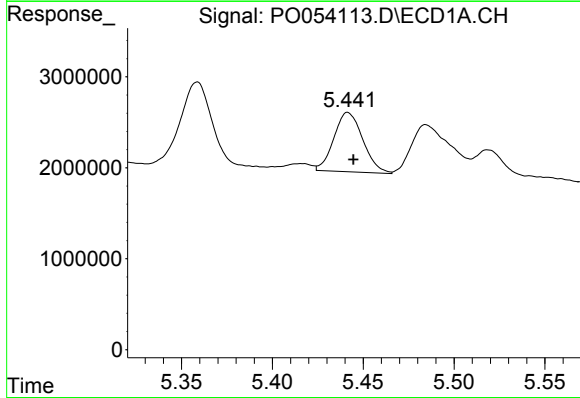
R.T.: 5.181 min
 Delta R.T.: -0.003 min
 Response: 16115498
 Conc: 520.27 ng/ml

Instrument :
 ECD_O
 ClientSampled :
 SR-11-SMSD



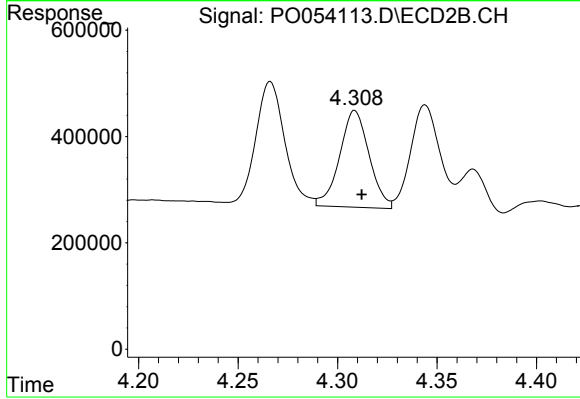
#21 AR-1248-1

R.T.: 4.096 min
 Delta R.T.: -0.003 min
 Response: 4542324
 Conc: 691.39 ng/ml



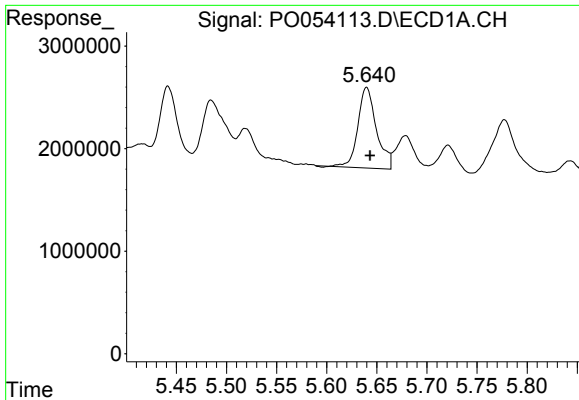
#22 AR-1248-2

R.T.: 5.441 min
 Delta R.T.: -0.003 min
 Response: 7259672
 Conc: 186.38 ng/ml



#22 AR-1248-2

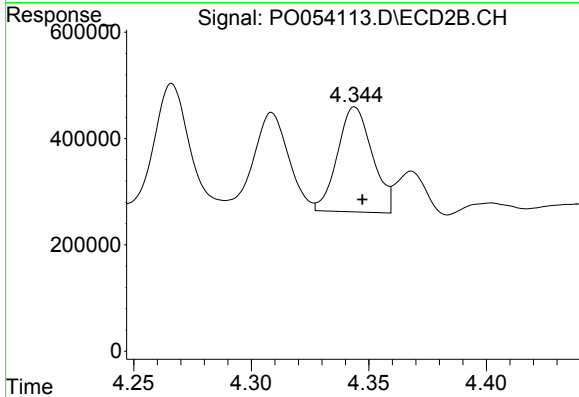
R.T.: 4.309 min
 Delta R.T.: -0.004 min
 Response: 1877043
 Conc: 207.24 ng/ml



#23 AR-1248-3

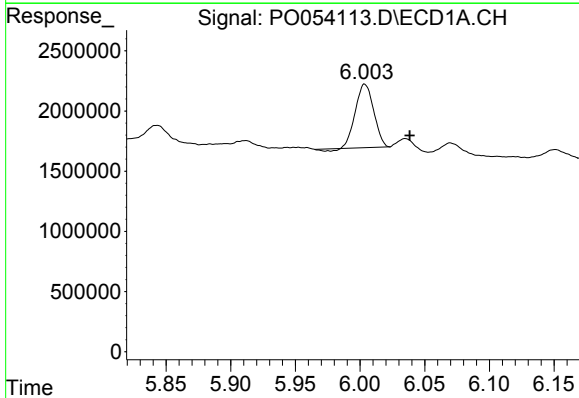
R.T.: 5.640 min
 Delta R.T.: -0.004 min
 Response: 10165516
 Conc: 229.66 ng/ml

Instrument :
 ECD_O
 ClientSampleId :
 SR-11-SMSD



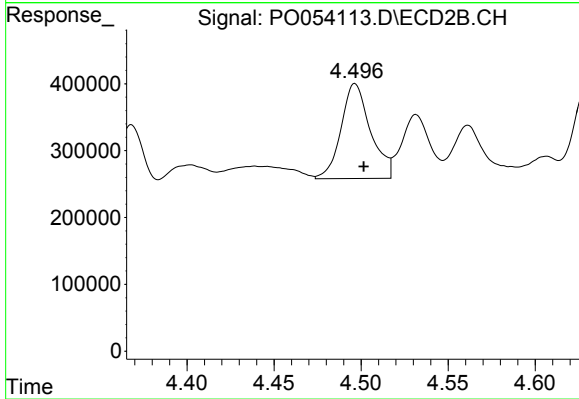
#23 AR-1248-3

R.T.: 4.344 min
 Delta R.T.: -0.003 min
 Response: 2033617
 Conc: 222.17 ng/ml



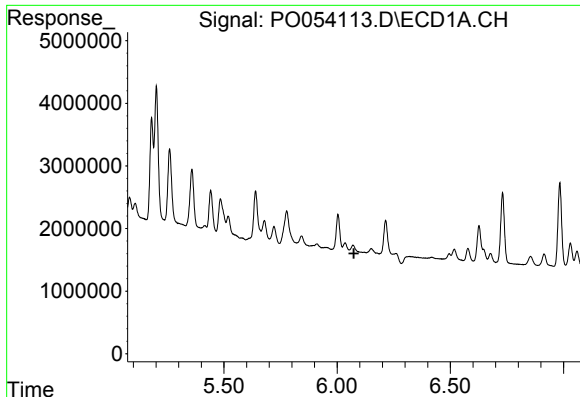
#24 AR-1248-4

R.T.: 6.004 min
 Delta R.T.: -0.035 min
 Response: 5165118
 Conc: 105.44 ng/ml



#24 AR-1248-4

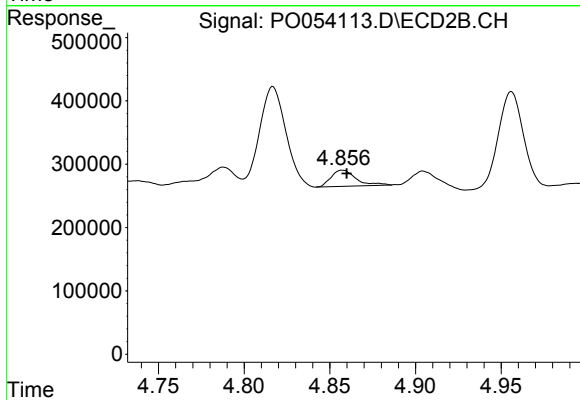
R.T.: 4.496 min
 Delta R.T.: -0.005 min
 Response: 1674675
 Conc: 146.23 ng/ml



#25 AR-1248-5

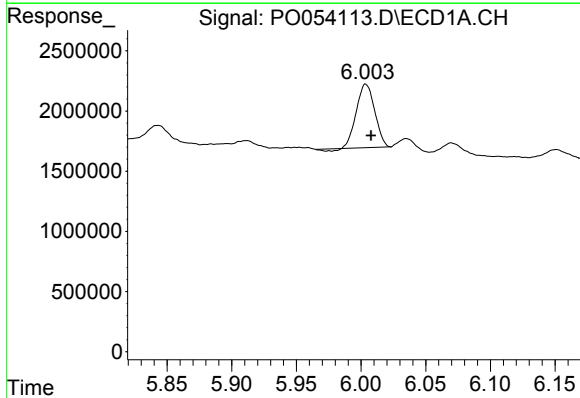
R.T.: 0.000 min
 Exp R.T.: 6.074 min
 Response: 0
 Conc: N.D.

Instrument :
 ECD_O
 ClientSampleId :
 SR-11-SMSD



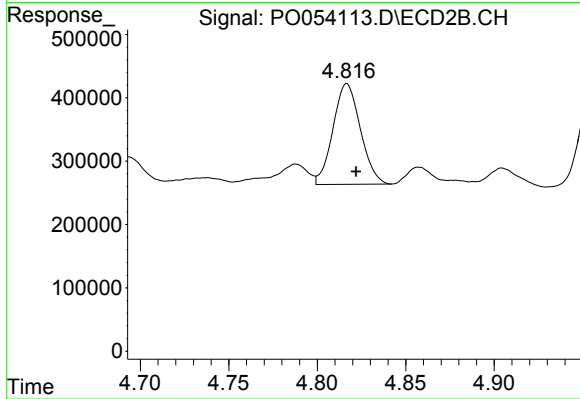
#25 AR-1248-5

R.T.: 4.858 min
 Delta R.T.: -0.002 min
 Response: 255441
 Conc: 21.86 ng/ml



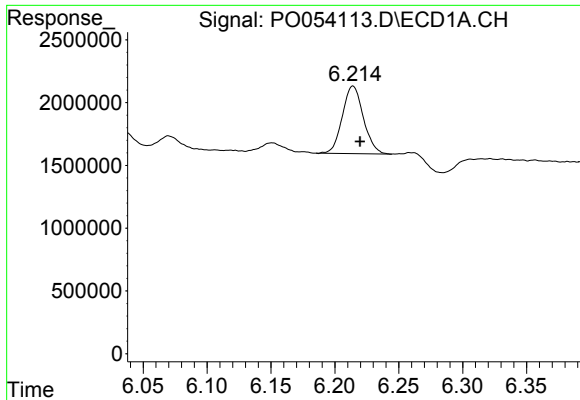
#26 AR-1254-1

R.T.: 6.004 min
 Delta R.T.: -0.004 min
 Response: 5165118
 Conc: 122.46 ng/ml



#26 AR-1254-1

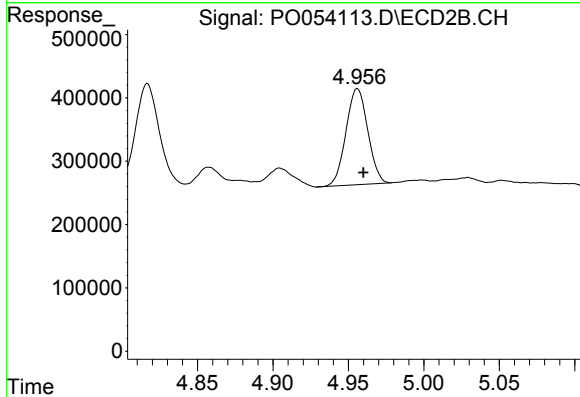
R.T.: 4.817 min
 Delta R.T.: -0.005 min
 Response: 1712987
 Conc: 107.50 ng/ml



#27 AR-1254-2

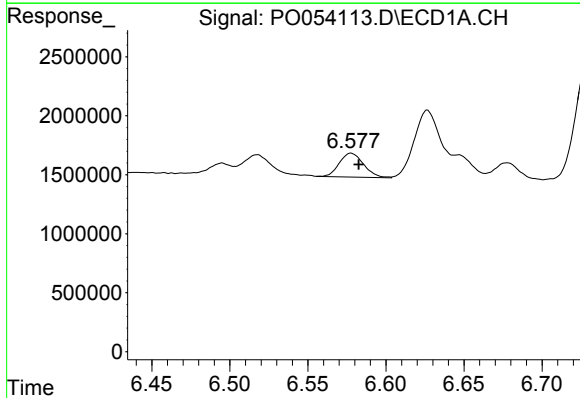
R.T.: 6.214 min
 Delta R.T.: -0.005 min
 Response: 6170494
 Conc: 93.53 ng/ml

Instrument :
 ECD_O
 ClientSampled :
 SR-11-SMSD



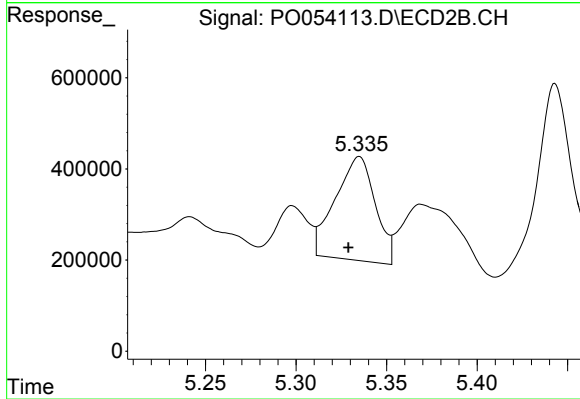
#27 AR-1254-2

R.T.: 4.956 min
 Delta R.T.: -0.004 min
 Response: 1527171
 Conc: 115.54 ng/ml



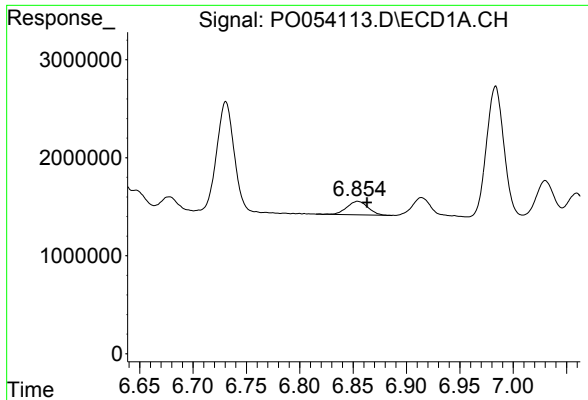
#28 AR-1254-3

R.T.: 6.578 min
 Delta R.T.: -0.005 min
 Response: 2193617
 Conc: 31.79 ng/ml



#28 AR-1254-3

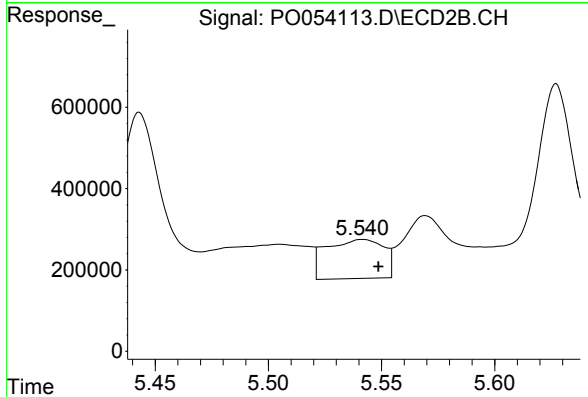
R.T.: 5.335 min
 Delta R.T.: 0.006 min
 Response: 3505973
 Conc: 164.48 ng/ml



#29 AR-1254-4

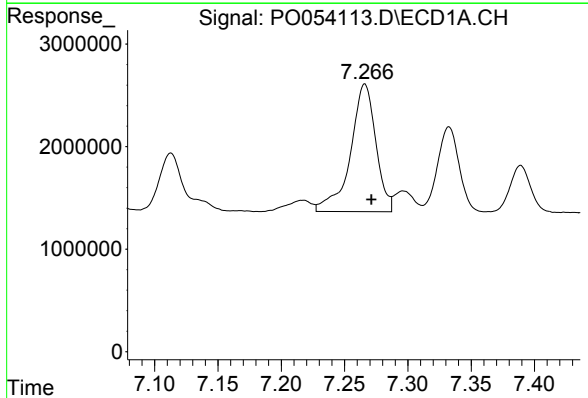
R.T.: 6.854 min
 Delta R.T.: -0.009 min
 Response: 1898188
 Conc: 36.15 ng/ml

Instrument :
 ECD_O
 ClientSampled :
 SR-11-SMSD



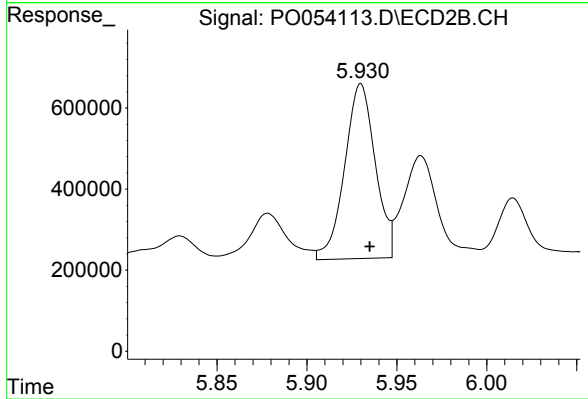
#29 AR-1254-4

R.T.: 5.542 min
 Delta R.T.: -0.007 min
 Response: 1701451
 Conc: 121.31 ng/ml



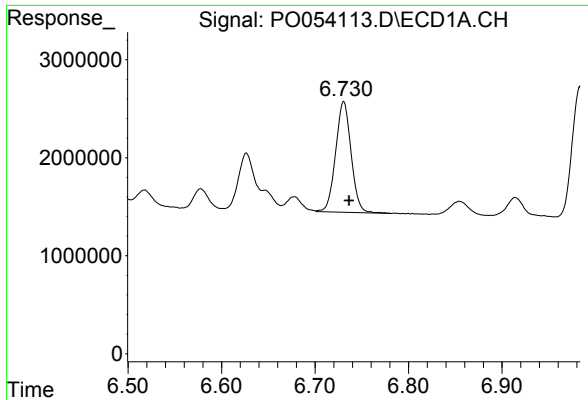
#30 AR-1254-5

R.T.: 7.266 min
 Delta R.T.: -0.005 min
 Response: 17427659
 Conc: 342.51 ng/ml



#30 AR-1254-5

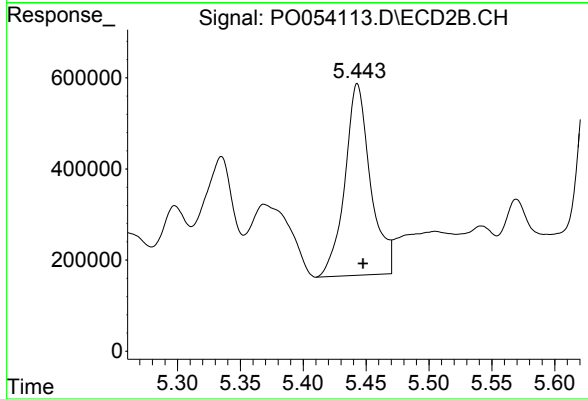
R.T.: 5.930 min
 Delta R.T.: -0.005 min
 Response: 5115445
 Conc: 285.38 ng/ml



#31 AR-1260-1

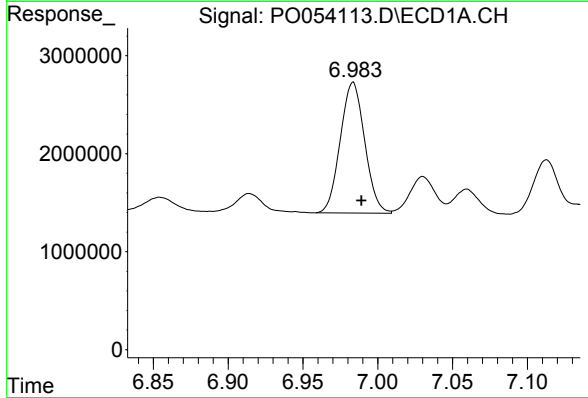
R.T.: 6.731 min
Delta R.T.: -0.006 min
Response: 13008689
Conc: 237.18 ng/ml

Instrument :
ECD_O
ClientSampleId :
SR-11-SMSD



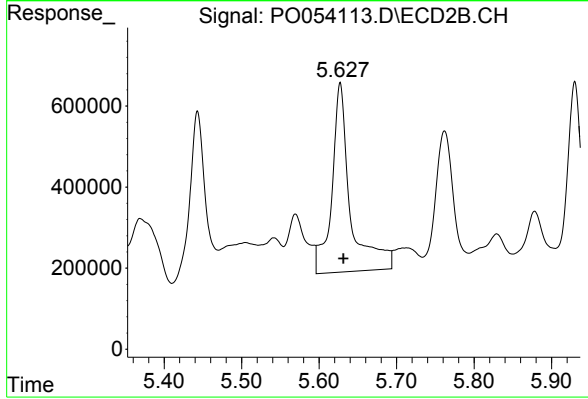
#31 AR-1260-1

R.T.: 5.443 min
Delta R.T.: -0.004 min
Response: 5970923
Conc: 346.38 ng/ml



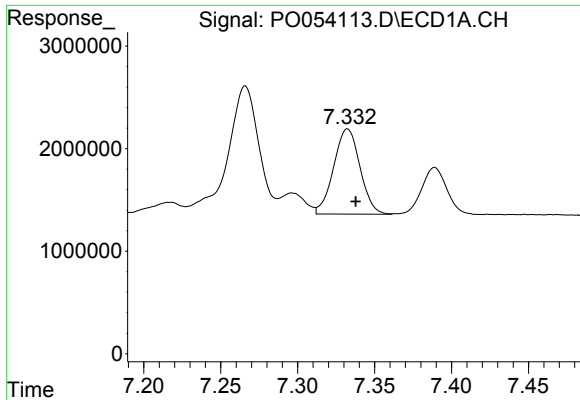
#32 AR-1260-2

R.T.: 6.984 min
Delta R.T.: -0.006 min
Response: 15148906
Conc: 218.62 ng/ml



#32 AR-1260-2

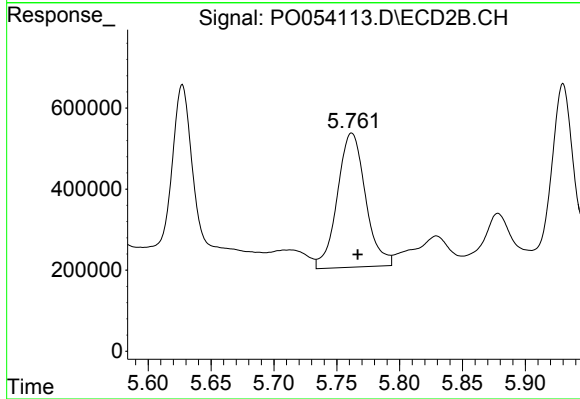
R.T.: 5.627 min
Delta R.T.: -0.004 min
Response: 7751705
Conc: 370.74 ng/ml



#33 AR-1260-3

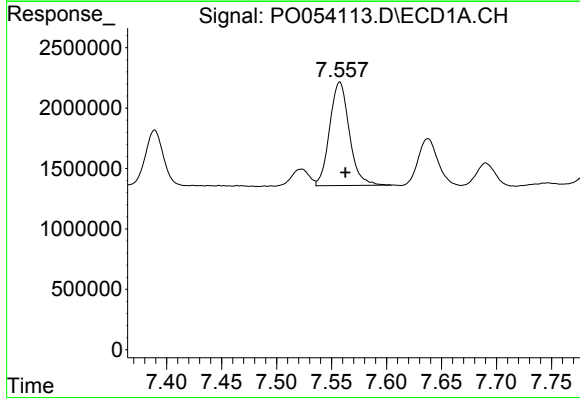
R.T.: 7.332 min
 Delta R.T.: -0.005 min
 Response: 9894977
 Conc: 224.76 ng/ml

Instrument :
 ECD_O
 ClientSampleId :
 SR-11-SMSD



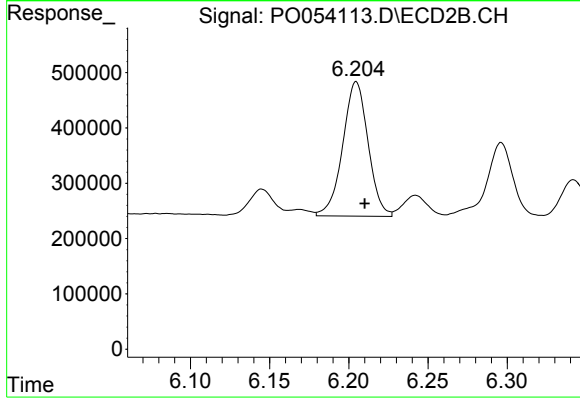
#33 AR-1260-3

R.T.: 5.762 min
 Delta R.T.: -0.005 min
 Response: 5158598
 Conc: 269.94 ng/ml



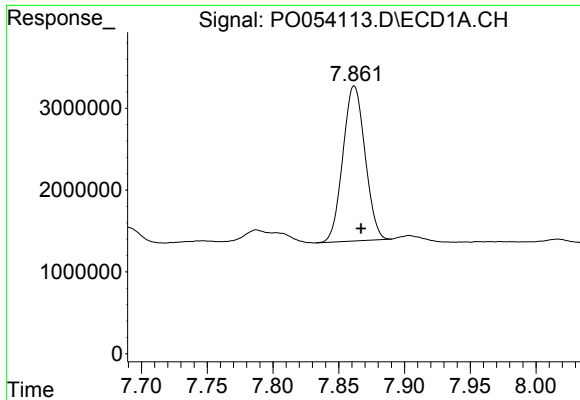
#34 AR-1260-4

R.T.: 7.557 min
 Delta R.T.: -0.005 min
 Response: 10645007
 Conc: 225.04 ng/ml



#34 AR-1260-4

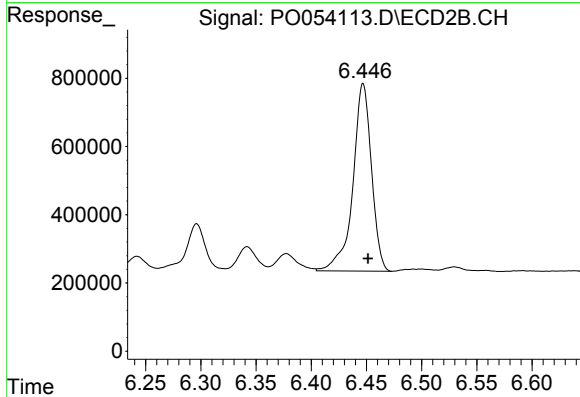
R.T.: 6.205 min
 Delta R.T.: -0.005 min
 Response: 2715650
 Conc: 222.25 ng/ml



#35 AR-1260-5

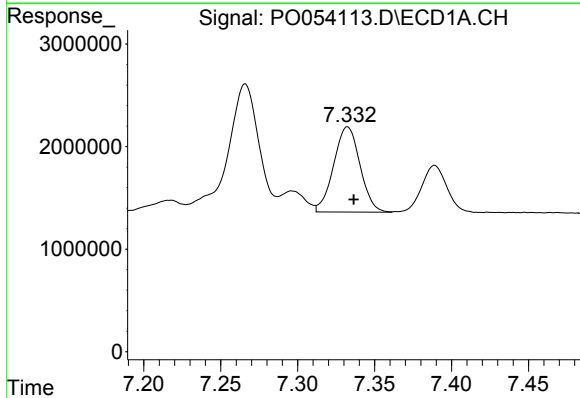
R.T.: 7.862 min
 Delta R.T.: -0.005 min
 Response: 22165284
 Conc: 219.54 ng/ml

Instrument :
 ECD_O
 ClientSampleId :
 SR-11-SMSD



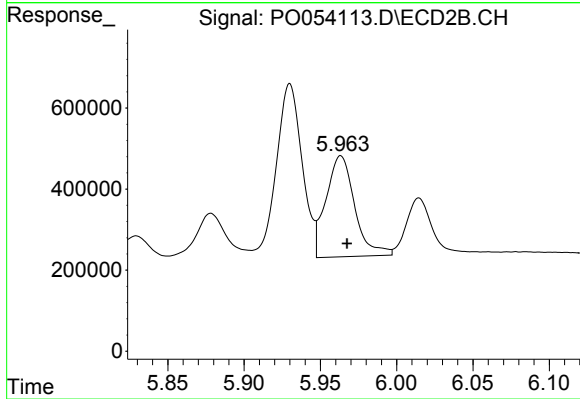
#35 AR-1260-5

R.T.: 6.447 min
 Delta R.T.: -0.004 min
 Response: 6435754
 Conc: 218.23 ng/ml



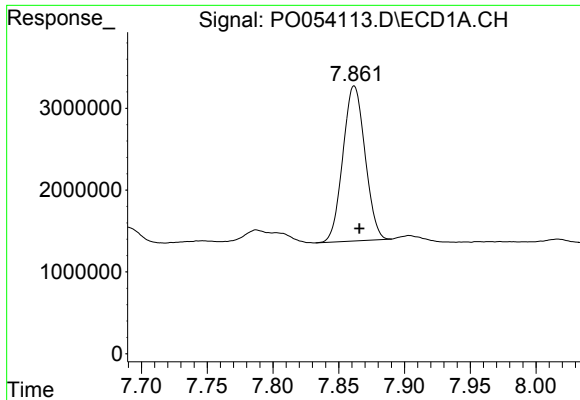
#36 AR-1262-1

R.T.: 7.332 min
 Delta R.T.: -0.004 min
 Response: 9894977
 Conc: 122.49 ng/ml



#36 AR-1262-1

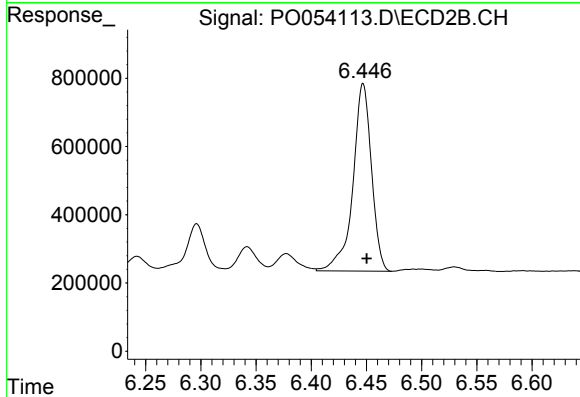
R.T.: 5.963 min
 Delta R.T.: -0.004 min
 Response: 3272084
 Conc: 148.21 ng/ml



#37 AR-1262-2

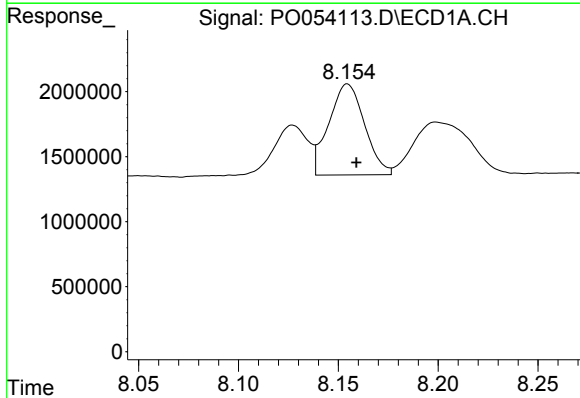
R.T.: 7.862 min
 Delta R.T.: -0.004 min
 Response: 22165284
 Conc: 160.02 ng/ml

Instrument :
 ECD_O
 ClientSampled :
 SR-11-SMSD



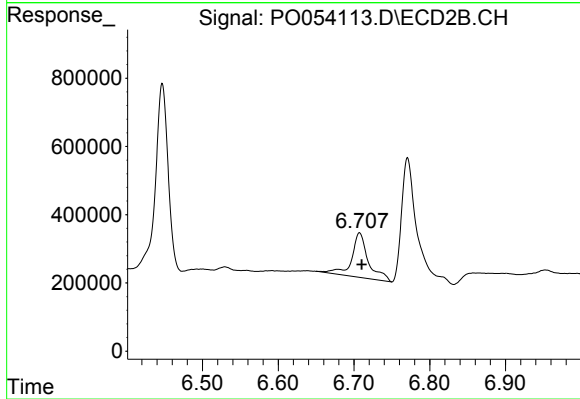
#37 AR-1262-2

R.T.: 6.447 min
 Delta R.T.: -0.003 min
 Response: 6435754
 Conc: 174.74 ng/ml



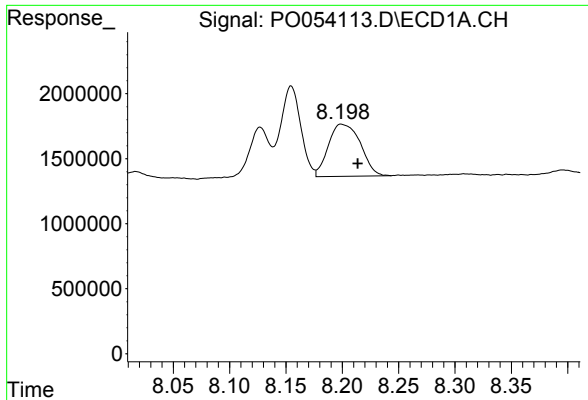
#38 AR-1262-3

R.T.: 8.155 min
 Delta R.T.: -0.004 min
 Response: 8724789
 Conc: 295.41 ng/ml



#38 AR-1262-3

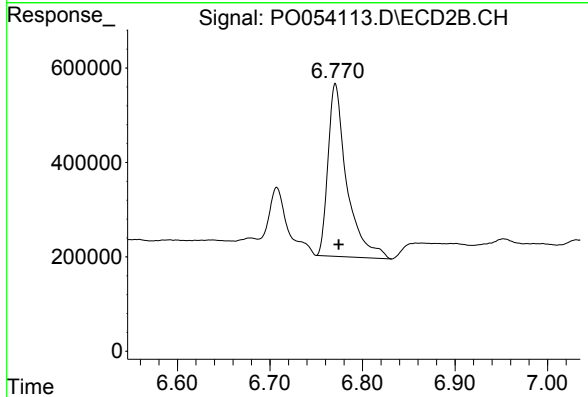
R.T.: 6.707 min
 Delta R.T.: -0.003 min
 Response: 1993245
 Conc: 137.13 ng/ml



#39 AR-1262-4

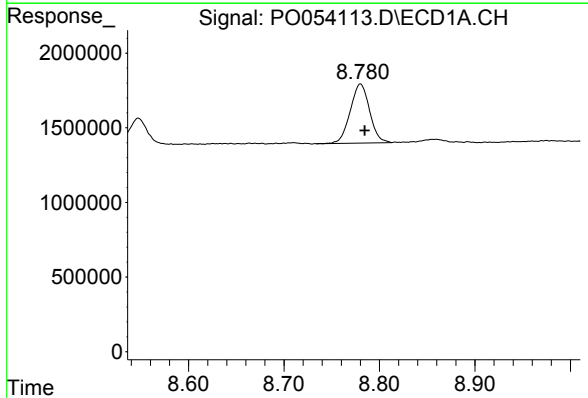
R.T.: 8.199 min
Delta R.T.: -0.015 min
Response: 7911081
Conc: 112.69 ng/ml

Instrument :
ECD_O
ClientSampleId :
SR-11-SMSD



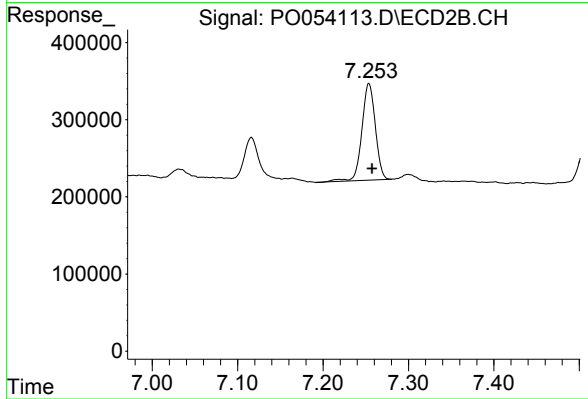
#39 AR-1262-4

R.T.: 6.771 min
Delta R.T.: -0.004 min
Response: 5150663
Conc: 191.82 ng/ml



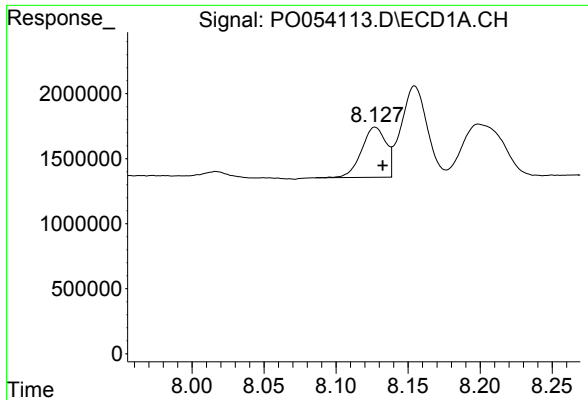
#40 AR-1262-5

R.T.: 8.780 min
Delta R.T.: -0.005 min
Response: 5558183
Conc: 115.18 ng/ml



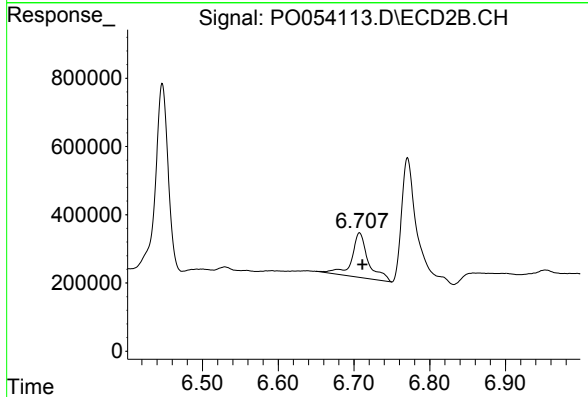
#40 AR-1262-5

R.T.: 7.254 min
Delta R.T.: -0.004 min
Response: 1367580
Conc: 109.94 ng/ml

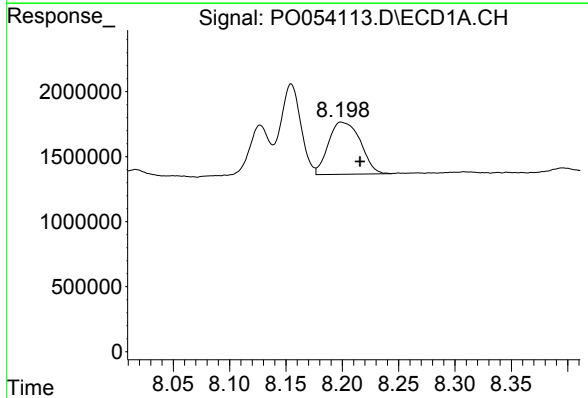


#41 AR-1268-1
 R.T.: 8.127 min
 Delta R.T.: -0.005 min
 Response: 4553499
 Conc: 29.47 ng/ml

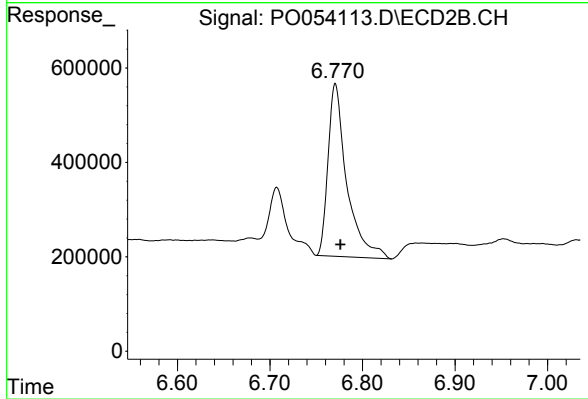
Instrument :
 ECD_O
 ClientSampleId :
 SR-11-SMSD



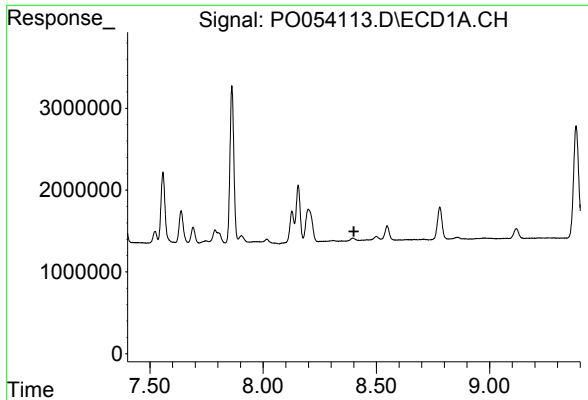
#41 AR-1268-1
 R.T.: 6.707 min
 Delta R.T.: -0.004 min
 Response: 1993245
 Conc: 51.15 ng/ml



#42 AR-1268-2
 R.T.: 8.199 min
 Delta R.T.: -0.017 min
 Response: 7911081
 Conc: 54.69 ng/ml



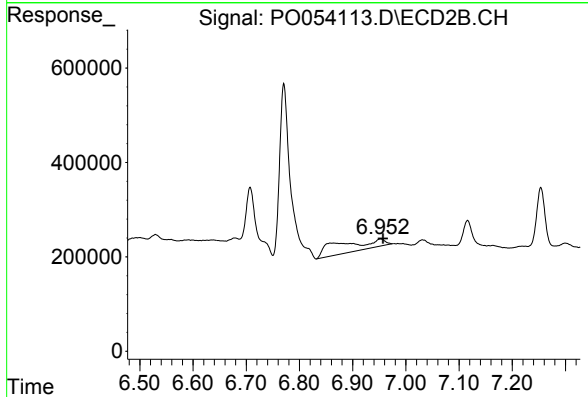
#42 AR-1268-2
 R.T.: 6.771 min
 Delta R.T.: -0.005 min
 Response: 5150663
 Conc: 140.89 ng/ml



#43 AR-1268-3

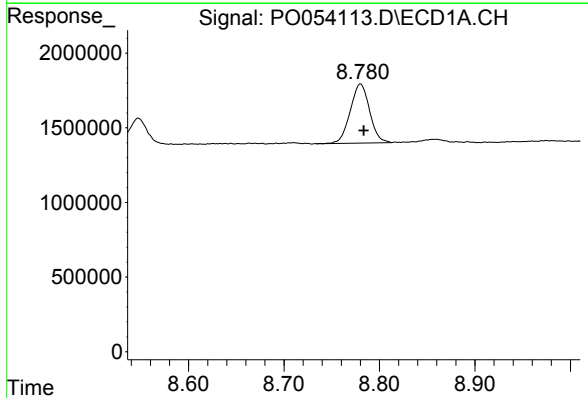
R.T.: 0.000 min
 Exp R.T.: 8.401 min
 Response: 0
 Conc: N.D.

Instrument :
 ECD_O
 ClientSampleId :
 SR-11-SMSD



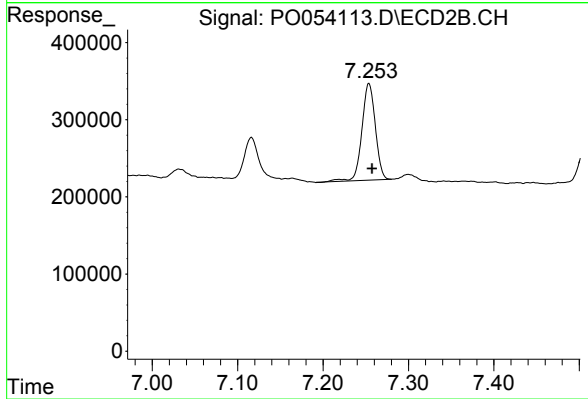
#43 AR-1268-3

R.T.: 6.953 min
 Delta R.T.: -0.005 min
 Response: 1284888
 Conc: 41.70 ng/ml



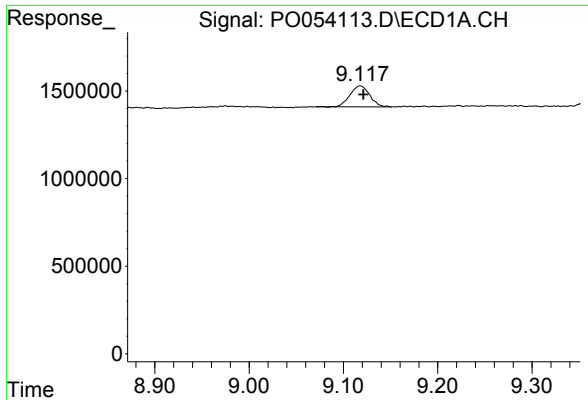
#44 AR-1268-4

R.T.: 8.780 min
 Delta R.T.: -0.003 min
 Response: 5558183
 Conc: 110.85 ng/ml



#44 AR-1268-4

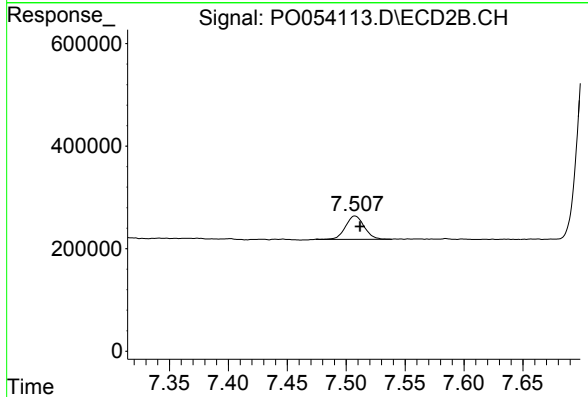
R.T.: 7.254 min
 Delta R.T.: -0.004 min
 Response: 1367580
 Conc: 107.74 ng/ml



#45 AR-1268-5

R.T.: 9.118 min
 Delta R.T.: -0.003 min
 Response: 1737575
 Conc: 4.47 ng/ml

Instrument :
 ECD_O
ClientSampleId :
 SR-11-SMSD



#45 AR-1268-5

R.T.: 7.508 min
 Delta R.T.: -0.004 min
 Response: 501321
 Conc: 5.52 ng/ml