

Data Path : Z:\pestpcbsrv\HPCHEM1\ECD_O\Data\P0022723\
 Data File : P0092769.D
 Signal(s) : Signal #1: ECD1A.ch Signal #2: ECD2B.ch
 Acq On : 27 Feb 2023 09:55
 Operator : YP/AJ
 Sample : AR1660CCC500
 Misc :
 ALS Vial : 3 Sample Multiplier: 1

Instrument :
 ECD_O
 ClientSampleId :
 AR1660CCC500

Integration File signal 1: autoint1.e
 Integration File signal 2: autoint2.e
 Quant Time: Feb 27 20:11:57 2023
 Quant Method : Z:\pestpcbsrv\HPCHEM1\ECD_O\methods\P0022123.M
 Quant Title : GC EXTRACTABLES
 QLast Update : Wed Feb 22 05:46:11 2023
 Response via : Initial Calibration
 Integrator: ChemStation

Volume Inj. : 2 µl
 Signal #1 Phase : ZB-MR1 Signal #2 Phase: ZB-MR2
 Signal #1 Info : 30Mx0.32mmx 0.50µ Signal #2 Info : 30M x 0.32mm x 0.25µm

Compound	RT#1	RT#2	Resp#1	Resp#2	ng/ml	ng/ml

System Monitoring Compounds						
1) SA Tetrachlo...	4.432	3.636	165.9E6	62992600	55.236	49.418
2) SA Decachlor...	10.269	8.674	105.1E6	51561506	54.627	44.243
Target Compounds						
3) L1 AR-1016-1	5.609	4.724	48814786	19559102	531.122	484.158
4) L1 AR-1016-2	5.632	4.742	71785737	28106567	538.604	486.762
5) L1 AR-1016-3	5.694	4.919	46644576	15343790	537.245	489.651
6) L1 AR-1016-4	5.793	4.961	35066760	13714155	536.991	490.542
7) L1 AR-1016-5	6.091	5.175	38345604	17327465	539.547	488.472
31) L7 AR-1260-1	7.229	6.213	65711265	32697369	538.485	479.938
32) L7 AR-1260-2	7.488	6.402	73154534	38230831	497.720	475.610
33) L7 AR-1260-3	7.772	6.556	90606186	35172121	576.424	435.726
34) L7 AR-1260-4	8.078	7.031	63539675	29261012	542.443	480.702
35) L7 AR-1260-5	8.406	7.275	111.2E6	61118545	536.345	478.727

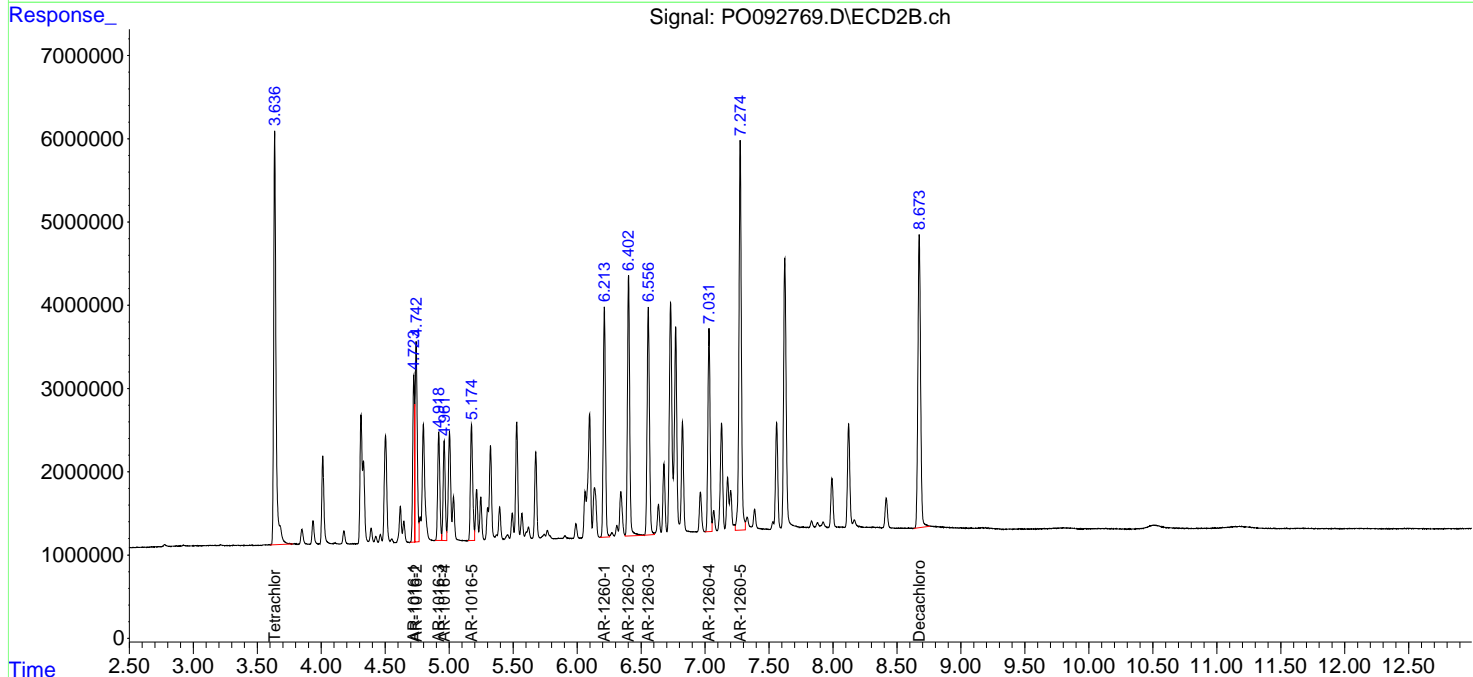
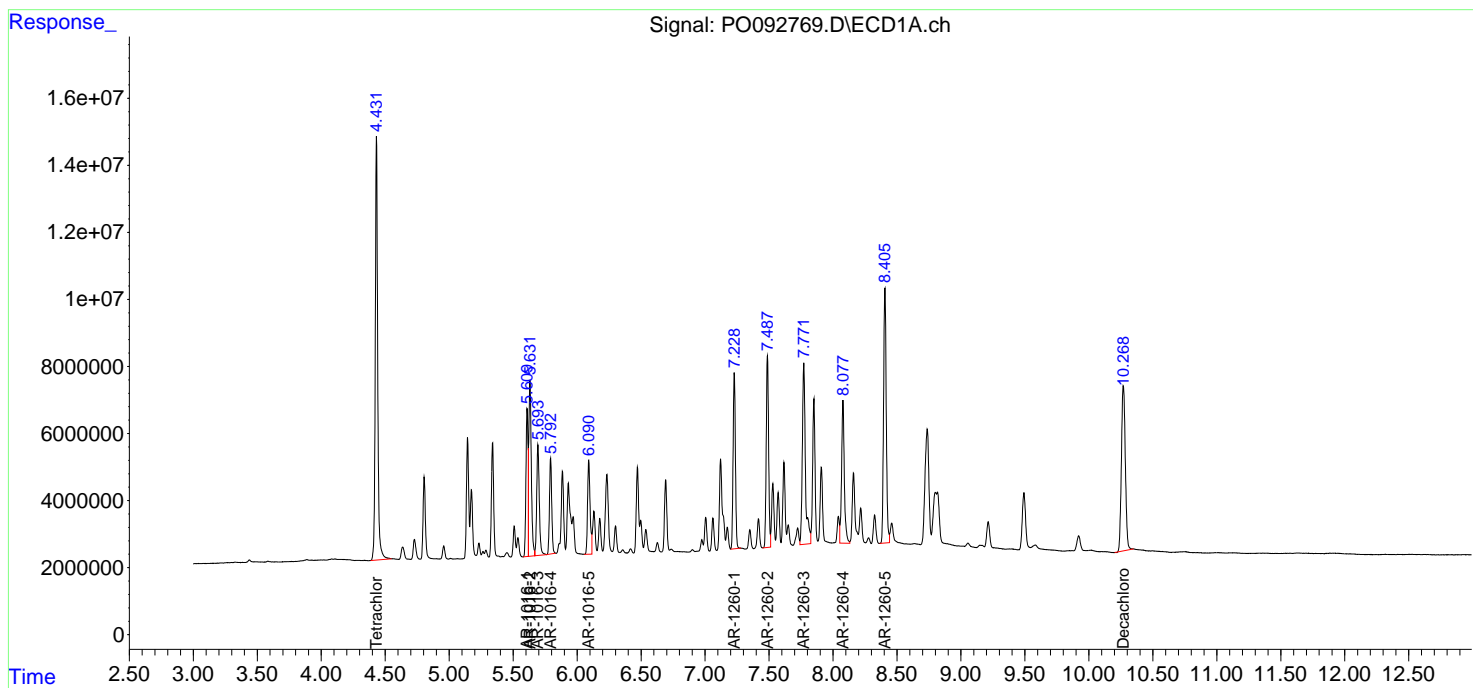
(f)=RT Delta > 1/2 Window (#)=Amounts differ by > 25% (m)=manual int.

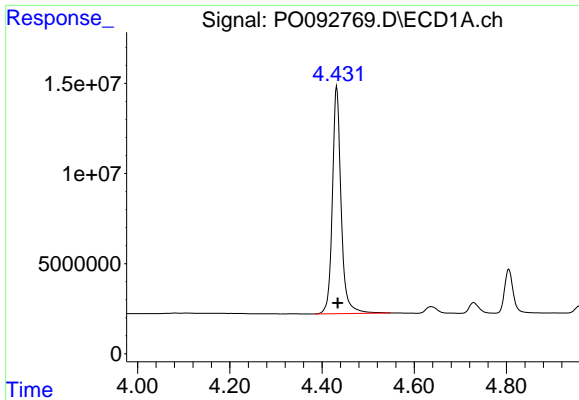
Data Path : Z:\pestpcbsrv\HPCHEM1\ECD_O\Data\P0022723\
 Data File : P0092769.D
 Signal(s) : Signal #1: ECD1A.ch Signal #2: ECD2B.ch
 Acq On : 27 Feb 2023 09:55
 Operator : YP/AJ
 Sample : AR1660CCC500
 Misc :
 ALS Vial : 3 Sample Multiplier: 1

Instrument :
 ECD_O
 ClientSampleId :
 AR1660CCC500

Integration File signal 1: autoint1.e
 Integration File signal 2: autoint2.e
 Quant Time: Feb 27 20:11:57 2023
 Quant Method : Z:\pestpcbsrv\HPCHEM1\ECD_O\methods\P0022123.M
 Quant Title : GC EXTRACTABLES
 QLast Update : Wed Feb 22 05:46:11 2023
 Response via : Initial Calibration
 Integrator: ChemStation

Volume Inj. : 2 µl
 Signal #1 Phase : ZB-MR1 Signal #2 Phase: ZB-MR2
 Signal #1 Info : 30Mx0.32mmx 0.50µ Signal #2 Info : 30M x 0.32mm x 0.25µm

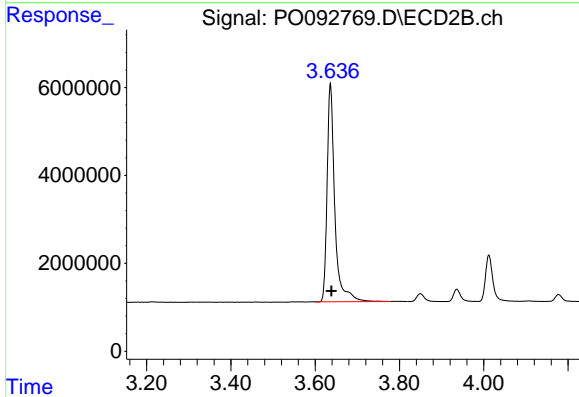




#1 Tetrachloro-m-xylene

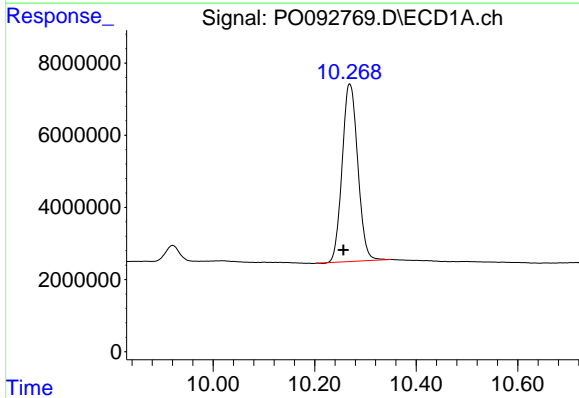
R.T.: 4.432 min
 Delta R.T.: -0.002 min
 Response: 165861717
 Conc: 55.24 ng/ml

Instrument :
 ECD_O
 ClientSampleId :
 AR1660CCC500



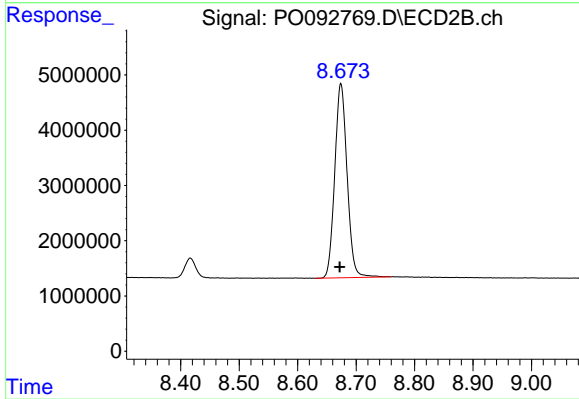
#1 Tetrachloro-m-xylene

R.T.: 3.636 min
 Delta R.T.: -0.002 min
 Response: 62992600
 Conc: 49.42 ng/ml



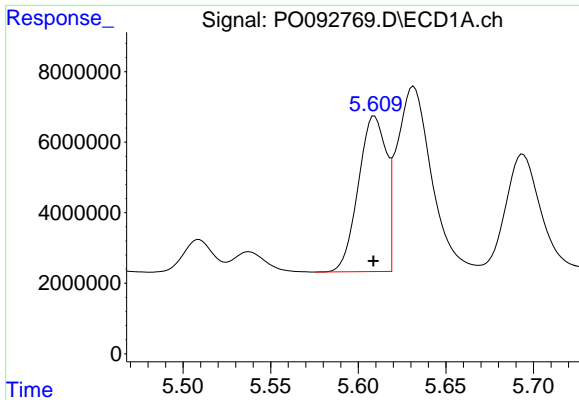
#2 Decachlorobiphenyl

R.T.: 10.269 min
 Delta R.T.: 0.013 min
 Response: 105074651
 Conc: 54.63 ng/ml



#2 Decachlorobiphenyl

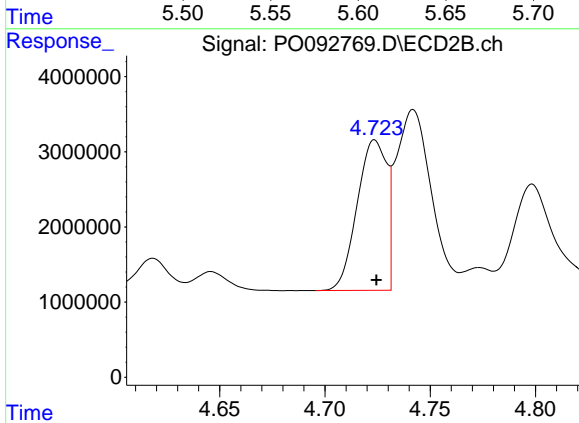
R.T.: 8.674 min
 Delta R.T.: 0.002 min
 Response: 51561506
 Conc: 44.24 ng/ml



#3 AR-1016-1

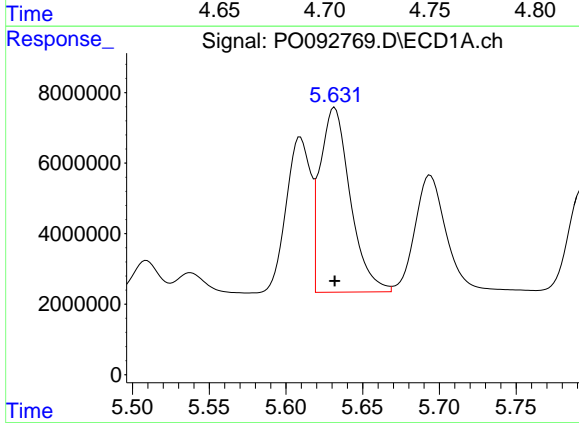
R.T.: 5.609 min
 Delta R.T.: 0.000 min
 Response: 48814786
 Conc: 531.12 ng/ml

Instrument :
 ECD_O
 ClientSampleId :
 AR1660CCC500



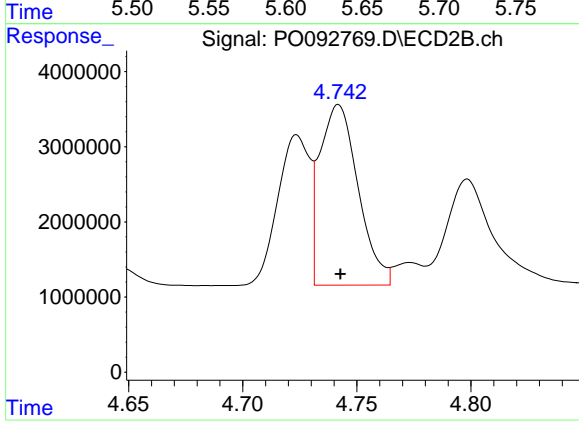
#3 AR-1016-1

R.T.: 4.724 min
 Delta R.T.: 0.000 min
 Response: 19559102
 Conc: 484.16 ng/ml



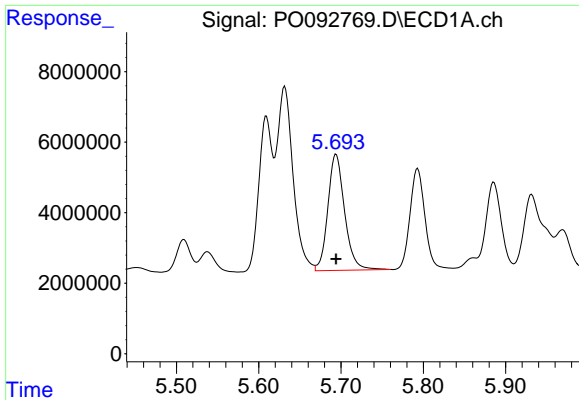
#4 AR-1016-2

R.T.: 5.632 min
 Delta R.T.: 0.000 min
 Response: 71785737
 Conc: 538.60 ng/ml



#4 AR-1016-2

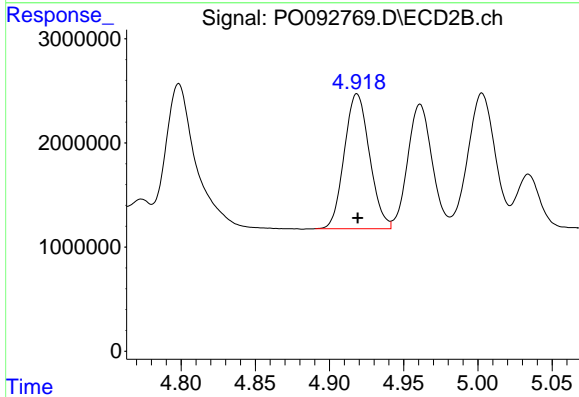
R.T.: 4.742 min
 Delta R.T.: 0.000 min
 Response: 28106567
 Conc: 486.76 ng/ml



#5 AR-1016-3

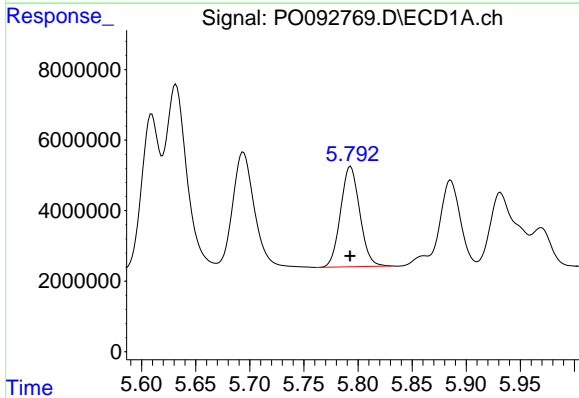
R.T.: 5.694 min
 Delta R.T.: 0.000 min
 Response: 46644576
 Conc: 537.25 ng/ml

Instrument :
 ECD_O
 ClientSampleId :
 AR1660CCC500



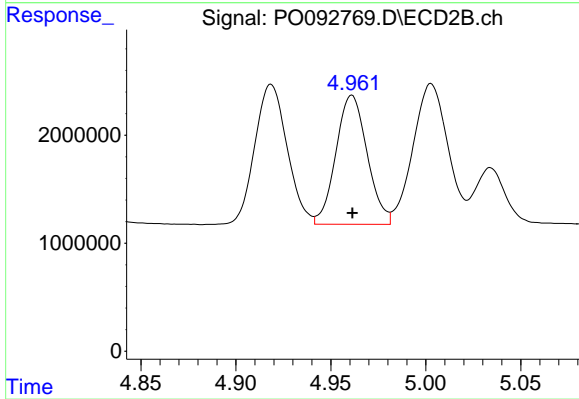
#5 AR-1016-3

R.T.: 4.919 min
 Delta R.T.: 0.000 min
 Response: 15343790
 Conc: 489.65 ng/ml



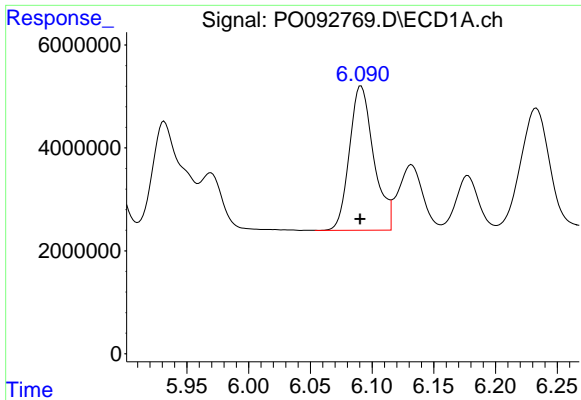
#6 AR-1016-4

R.T.: 5.793 min
 Delta R.T.: 0.000 min
 Response: 35066760
 Conc: 536.99 ng/ml



#6 AR-1016-4

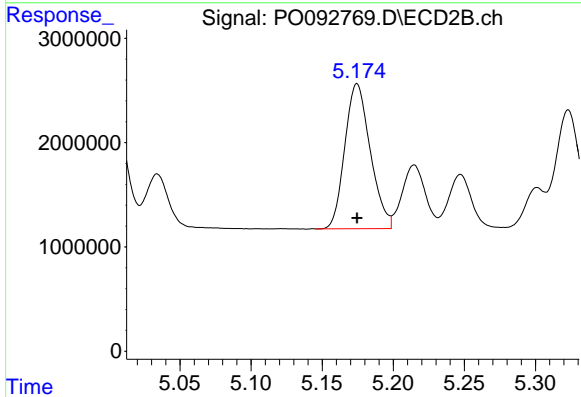
R.T.: 4.961 min
 Delta R.T.: 0.000 min
 Response: 13714155
 Conc: 490.54 ng/ml



#7 AR-1016-5

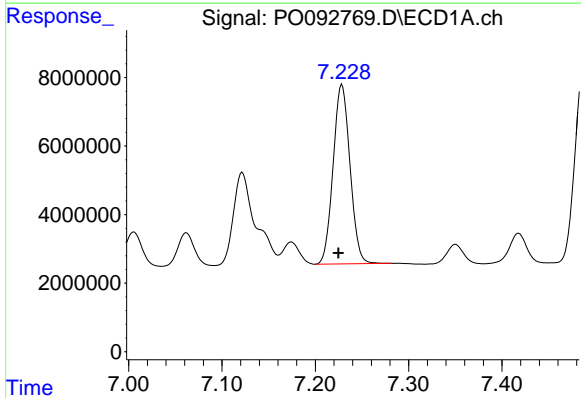
R.T.: 6.091 min
 Delta R.T.: 0.000 min
 Response: 38345604
 Conc: 539.55 ng/ml

Instrument :
 ECD_O
 ClientSampleId :
 AR1660CCC500



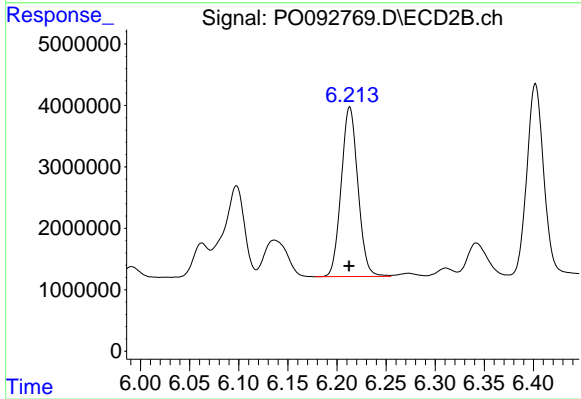
#7 AR-1016-5

R.T.: 5.175 min
 Delta R.T.: 0.000 min
 Response: 17327465
 Conc: 488.47 ng/ml



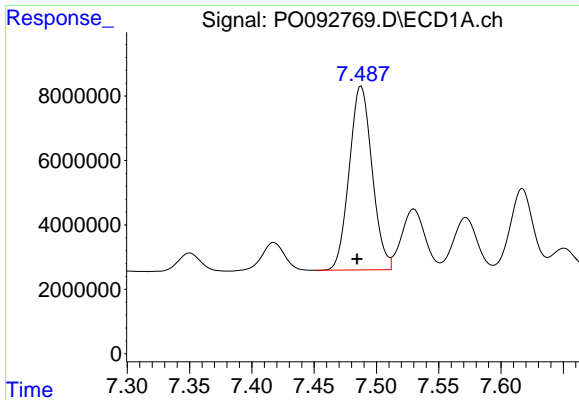
#31 AR-1260-1

R.T.: 7.229 min
 Delta R.T.: 0.004 min
 Response: 65711265
 Conc: 538.49 ng/ml



#31 AR-1260-1

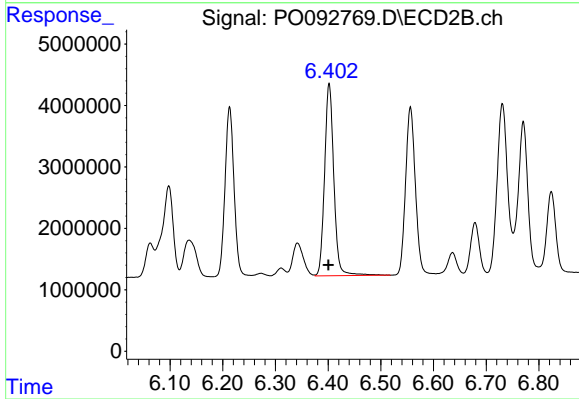
R.T.: 6.213 min
 Delta R.T.: 0.000 min
 Response: 32697369
 Conc: 479.94 ng/ml



#32 AR-1260-2

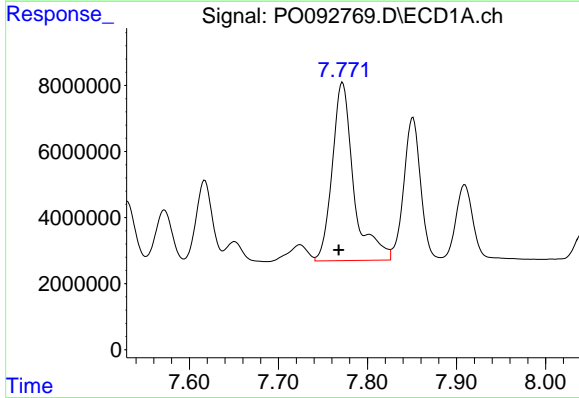
R.T.: 7.488 min
 Delta R.T.: 0.003 min
 Response: 73154534
 Conc: 497.72 ng/ml

Instrument :
 ECD_O
 ClientSampleId :
 AR1660CCC500



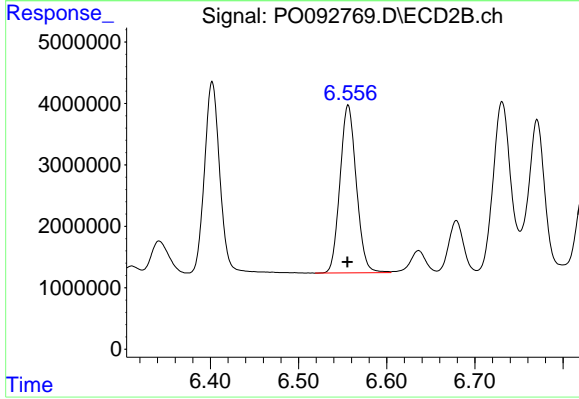
#32 AR-1260-2

R.T.: 6.402 min
 Delta R.T.: 0.001 min
 Response: 38230831
 Conc: 475.61 ng/ml



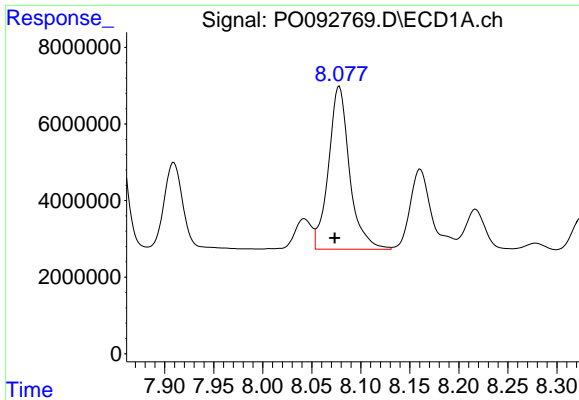
#33 AR-1260-3

R.T.: 7.772 min
 Delta R.T.: 0.004 min
 Response: 90606186
 Conc: 576.42 ng/ml



#33 AR-1260-3

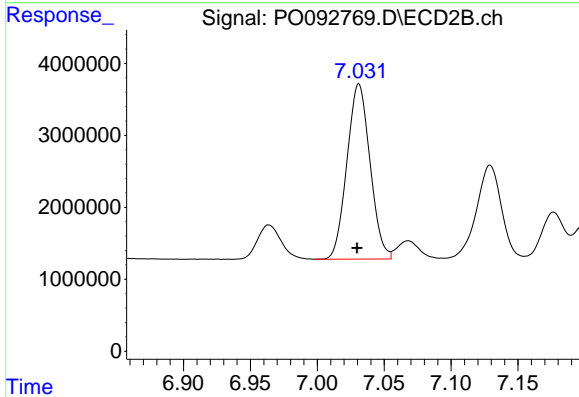
R.T.: 6.556 min
 Delta R.T.: 0.001 min
 Response: 35172121
 Conc: 435.73 ng/ml



#34 AR-1260-4

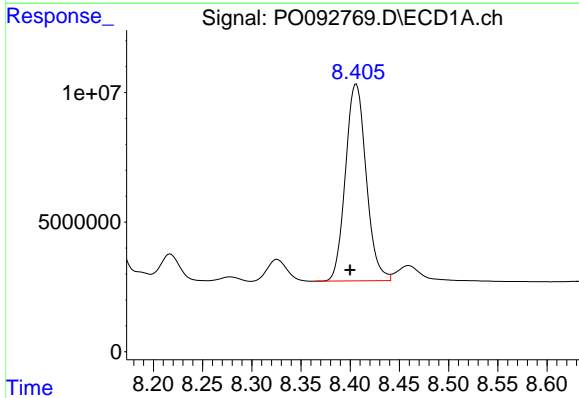
R.T.: 8.078 min
 Delta R.T.: 0.005 min
 Response: 63539675
 Conc: 542.44 ng/ml

Instrument :
 ECD_O
 ClientSampleId :
 AR1660CCC500



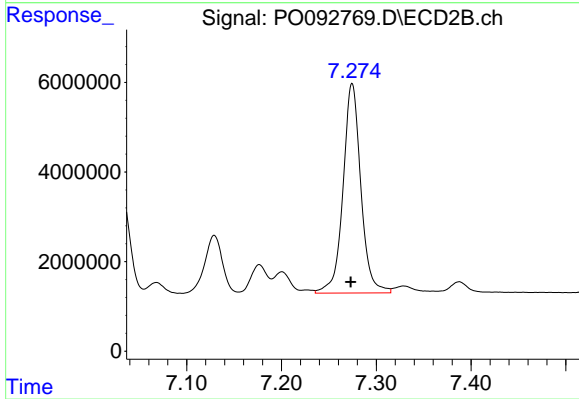
#34 AR-1260-4

R.T.: 7.031 min
 Delta R.T.: 0.001 min
 Response: 29261012
 Conc: 480.70 ng/ml



#35 AR-1260-5

R.T.: 8.406 min
 Delta R.T.: 0.006 min
 Response: 111231759
 Conc: 536.35 ng/ml



#35 AR-1260-5

R.T.: 7.275 min
 Delta R.T.: 0.002 min
 Response: 61118545
 Conc: 478.73 ng/ml