

Data Path : Z:\pestpcbsrv\HPCHEM1\ECD_O\Data\P0022724\
 Data File : P0102128.D
 Signal(s) : Signal #1: ECD1A.ch Signal #2: ECD2B.ch
 Acq On : 27 Feb 2024 16:07
 Operator : YP/AJ
 Sample : P1602-01MSD
 Misc :
 ALS Vial : 12 Sample Multiplier: 1

Instrument :
 ECD_O
 ClientSampleId :
 WC-1MSD

Integration File signal 1: autoint1.e
 Integration File signal 2: autoint2.e
 Quant Time: Feb 28 00:25:20 2024
 Quant Method : Z:\pestpcbsrv\HPCHEM1\ECD_O\methods\P0022324.M
 Quant Title : GC EXTRACTABLES
 QLast Update : Sun Feb 25 11:24:58 2024
 Response via : Initial Calibration
 Integrator: ChemStation

Volume Inj. : 2 µl
 Signal #1 Phase : ZB-MR1 Signal #2 Phase: ZB-MR2
 Signal #1 Info : 30Mx0.32mmx 0.50µ Signal #2 Info : 30M x 0.32mm x 0.25µm

Compound	RT#1	RT#2	Resp#1	Resp#2	ng/ml	ng/ml

System Monitoring Compounds						
1) SA Tetrachlo...	4.279	3.391	93773879	56938431	20.220	17.522
2) SA Decachlor...	9.832	8.266	35977507	27346538	14.129	13.219
Target Compounds						
3) L1 AR-1016-1	5.425	4.445	64642356	42382256	500.889	461.866
4) L1 AR-1016-2	5.446	4.463	92036101	56347034	481.148	420.351
5) L1 AR-1016-3	5.508	4.635	68859705	33031047	557.695	447.905
6) L1 AR-1016-4	5.605	4.677	58874048	26785435	600.294	424.996 #
7) L1 AR-1016-5	5.895	4.884	49550110	27101608	511.286	344.140 #
8) L2 AR-1221-1	4.484	3.596	106.5E6	3613754	2173.623	102.628 #
9) L2 AR-1221-2	4.569	3.666	12275315	60956434	339.533	2350.924 #
10) L2 AR-1221-3	4.643	3.755	36640683	20065880	341.747	268.182
11) L3 AR-1232-1	4.643	3.755	36640683	20065880	378.537	297.724
12) L3 AR-1232-2	5.162	4.463	56842140	56347034	1046.956	850.011
13) L3 AR-1232-3	5.446	4.635	92036101	33031047	997.951	924.843
14) L3 AR-1232-4	5.605	4.717	58874048	30041815	1256.338	872.443 #
15) L3 AR-1232-5	5.694	4.884	42052083	27101608	1191.908	752.522 #
16) L4 AR-1242-1	5.425	4.445	64642356	42382256	657.909	600.077
17) L4 AR-1242-2	5.446	4.463	92036101	56347034	633.751	555.022
18) L4 AR-1242-3	5.508	4.635	68859705	33031047	743.797	587.911
19) L4 AR-1242-4	5.605	4.717	58874048	30041815	797.753	502.249 #
20) L4 AR-1242-5	6.332	5.229	12177304	29031185	173.903	439.816 #
21) L5 AR-1248-1	5.425	4.445	64642356	42382256	864.902	768.687
22) L5 AR-1248-2	5.694	4.677	42052083	26785435	362.495	319.131
23) L5 AR-1248-3	5.895	4.717	49550110	30041815	406.532	342.147
24) L5 AR-1248-4	6.296	4.884	12145173	27101608	100.645	269.111 #
25) L5 AR-1248-5	6.332	5.269	12177304	7246157	102.033	82.875
26) L6 AR-1254-1	6.268	5.229	38594644	29031185	287.328	199.501 #
27) L6 AR-1254-2	6.482	5.375	40394472	30882276	204.904	239.385
28) L6 AR-1254-3	6.846	5.785	19644286	46146381	101.311	236.279 #
29) L6 AR-1254-4	7.127	5.997	7699289	8973185	62.153	83.335 #
30) L6 AR-1254-5	7.542	6.407	75536286	111.6E6	538.019	682.750 #
31) L7 AR-1260-1	7.007	5.898	61453233	61799580	378.195	417.288
32) L7 AR-1260-2	7.260	6.085	69131761	67356541	387.656	392.389
33) L7 AR-1260-3	7.617	6.235	39155430	63178288	300.896	382.137 #
34) L7 AR-1260-4	7.840	6.699	48914569	42116664	344.361	329.979
35) L7 AR-1260-5	8.147	6.941	82315632	88918206	311.723	324.824
36) L8 AR-1262-1	7.542	6.407	75536286	111.6E6	526.909	1019.381 #
37) L8 AR-1262-2	8.147	6.737	82315632	7348952	234.533	38.173 #
38) L8 AR-1262-3	8.454	7.219	55277160	16859067	233.595	114.071 #
39) L8 AR-1262-4	8.525	7.283	11774699	61304341	64.495	231.471 #
40) L8 AR-1262-5	9.137	7.773	20657877	17049835	176.765	153.127
41) L9 AR-1268-1	8.454	7.219	55277160	16859067	156.938	47.527 #

Data Path : Z:\pestpcbsrv\HPCHEM1\ECD_O\Data\P0022724\
 Data File : P0102128.D
 Signal(s) : Signal #1: ECD1A.ch Signal #2: ECD2B.ch
 Acq On : 27 Feb 2024 16:07
 Operator : YP/AJ
 Sample : P1602-01MSD
 Misc :
 ALS Vial : 12 Sample Multiplier: 1

Instrument :
 ECD_O
 ClientSampleId :
 WC-1MSD

Integration File signal 1: autoint1.e
 Integration File signal 2: autoint2.e
 Quant Time: Feb 28 00:25:20 2024
 Quant Method : Z:\pestpcbsrv\HPCHEM1\ECD_O\methods\P0022324.M
 Quant Title : GC EXTRACTABLES
 QLast Update : Sun Feb 25 11:24:58 2024
 Response via : Initial Calibration
 Integrator: ChemStation

Volume Inj. : 2 µl
 Signal #1 Phase : ZB-MR1 Signal #2 Phase: ZB-MR2
 Signal #1 Info : 30Mx0.32mmx 0.50µ Signal #2 Info : 30M x 0.32mm x 0.25µm

	Compound	RT#1	RT#2	Resp#1	Resp#2	ng/ml	ng/ml
42)	L9 AR-1268-2	8.525	7.283	11774699	61304341	37.223	189.335 #
43)	L9 AR-1268-3	8.740	7.484	1666818	1450936	5.893	5.296
44)	L9 AR-1268-4	9.137	8.041	20657877	7037175	196.040	9.093 #
45)	L9 AR-1268-5	9.521	8.266	7686754	27346538	8.684	75.389 #

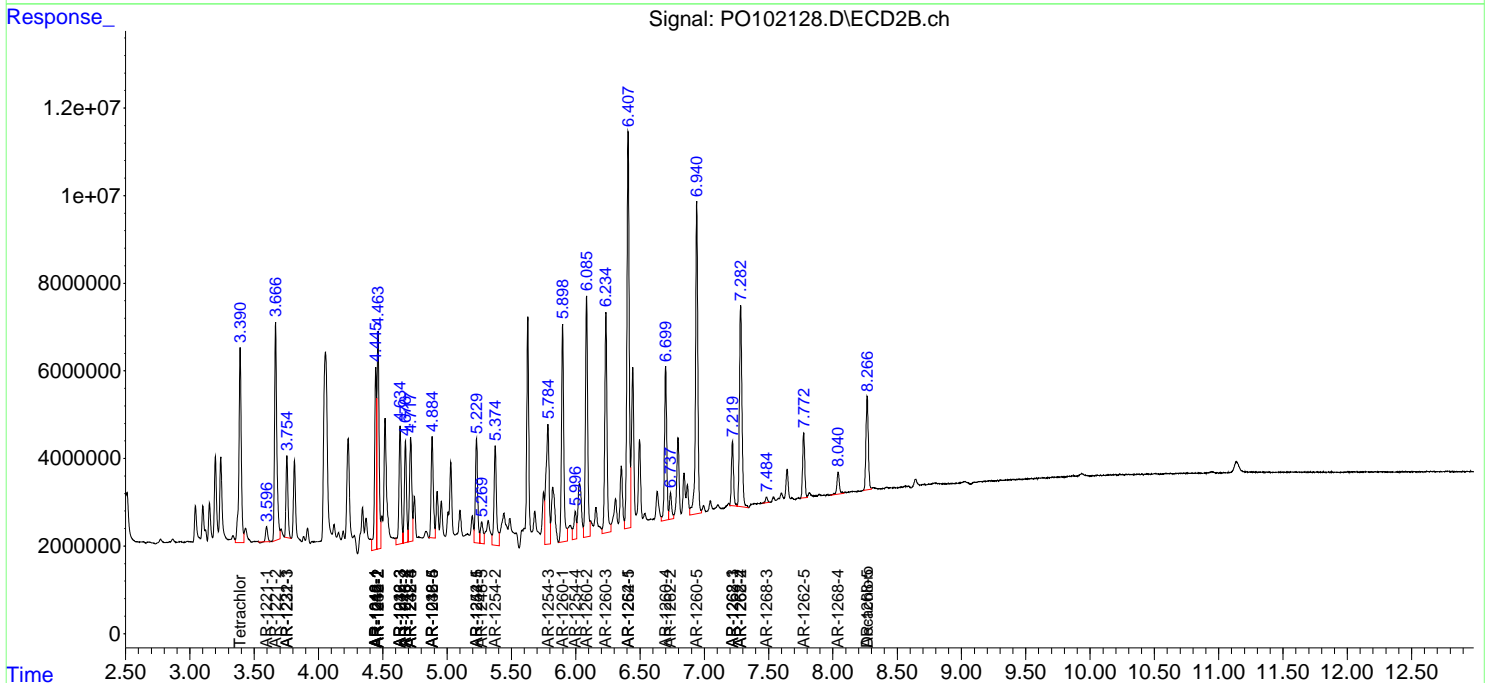
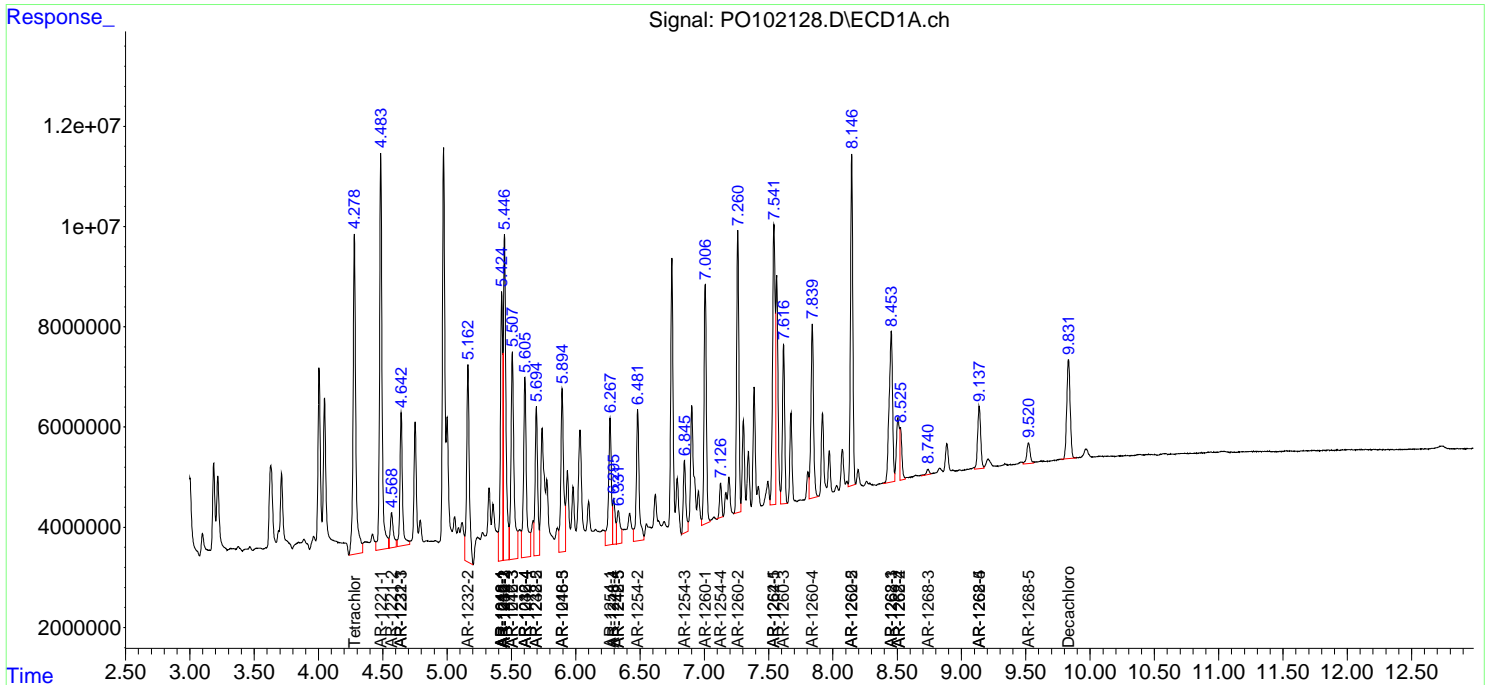
(f)=RT Delta > 1/2 Window (#)=Amounts differ by > 25% (m)=manual int.

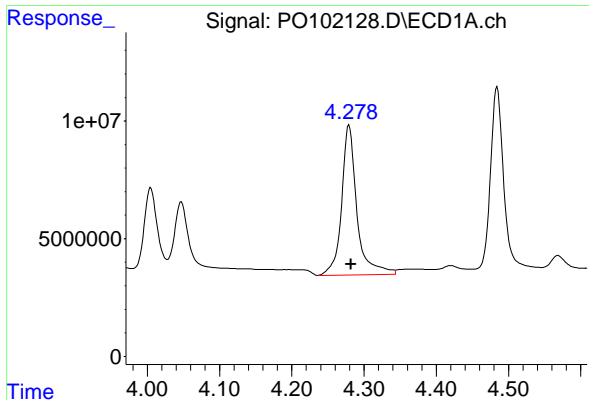
Data Path : Z:\pestpcbsrv\HPCHEM1\ECD_O\Data\PO022724\
 Data File : PO102128.D
 Signal(s) : Signal #1: ECD1A.ch Signal #2: ECD2B.ch
 Acq On : 27 Feb 2024 16:07
 Operator : YP/AJ
 Sample : P1602-01MSD
 Misc :
 ALS Vial : 12 Sample Multiplier: 1

Instrument :
 ECD_O
 ClientSampleId :
 WC-1MSD

Integration File signal 1: autoint1.e
 Integration File signal 2: autoint2.e
 Quant Time: Feb 28 00:25:20 2024
 Quant Method : Z:\pestpcbsrv\HPCHEM1\ECD_O\methods\PO022324.M
 Quant Title : GC EXTRACTABLES
 QLast Update : Sun Feb 25 11:24:58 2024
 Response via : Initial Calibration
 Integrator: ChemStation

Volume Inj. : 2 µl
 Signal #1 Phase : ZB-MR1 Signal #2 Phase: ZB-MR2
 Signal #1 Info : 30Mx0.32mmx 0.50µ Signal #2 Info : 30M x 0.32mm x 0.25µm

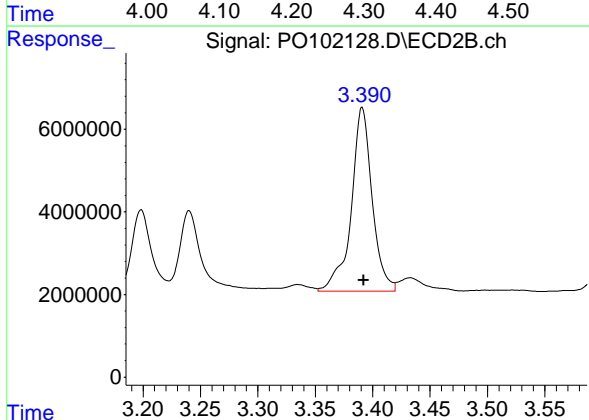




#1 Tetrachloro-m-xylene

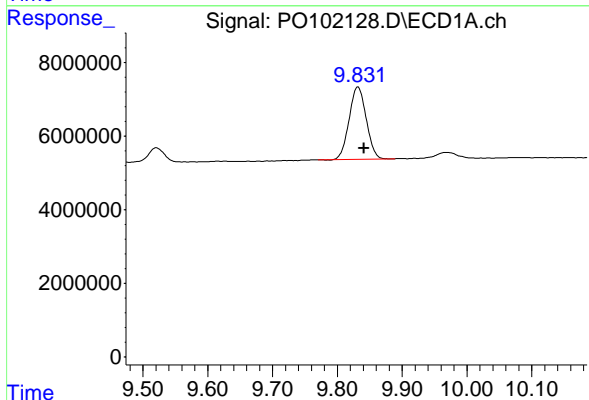
R.T.: 4.279 min
 Delta R.T.: -0.003 min
 Response: 93773879
 Conc: 20.22 ng/ml

Instrument :
 ECD_O
 ClientSampleId :
 WC-1MSD



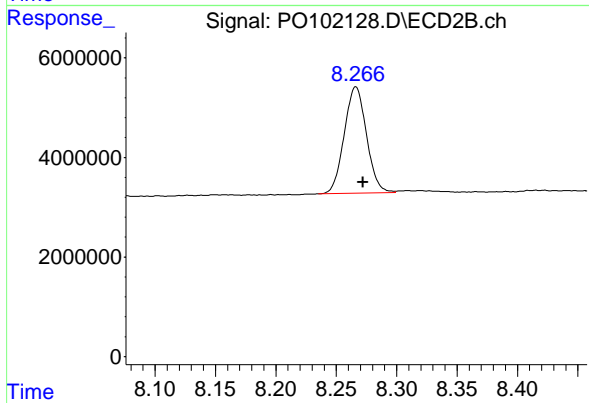
#1 Tetrachloro-m-xylene

R.T.: 3.391 min
 Delta R.T.: -0.001 min
 Response: 56938431
 Conc: 17.52 ng/ml



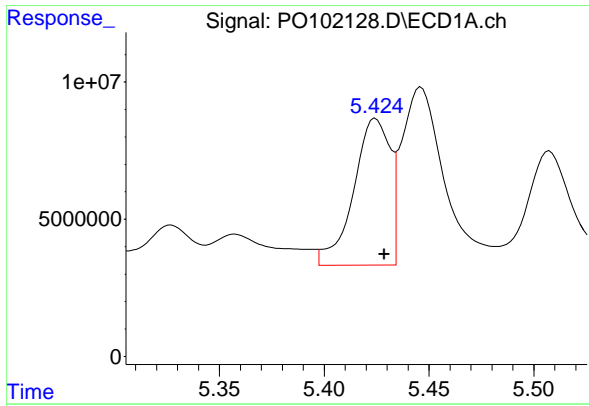
#2 Decachlorobiphenyl

R.T.: 9.832 min
 Delta R.T.: -0.009 min
 Response: 35977507
 Conc: 14.13 ng/ml



#2 Decachlorobiphenyl

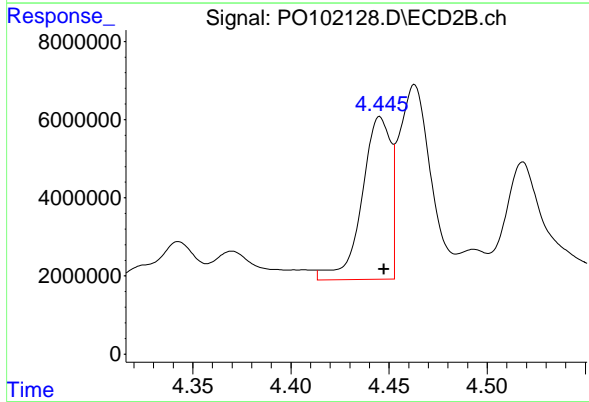
R.T.: 8.266 min
 Delta R.T.: -0.006 min
 Response: 27346538
 Conc: 13.22 ng/ml



#3 AR-1016-1

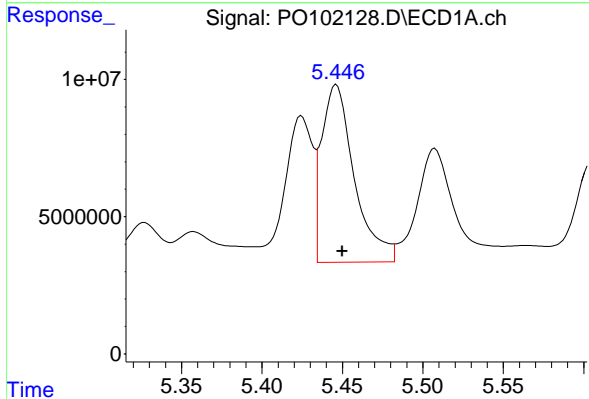
R.T.: 5.425 min
 Delta R.T.: -0.004 min
 Response: 64642356
 Conc: 500.89 ng/ml

Instrument :
 ECD_O
 ClientSampleId :
 WC-1MSD



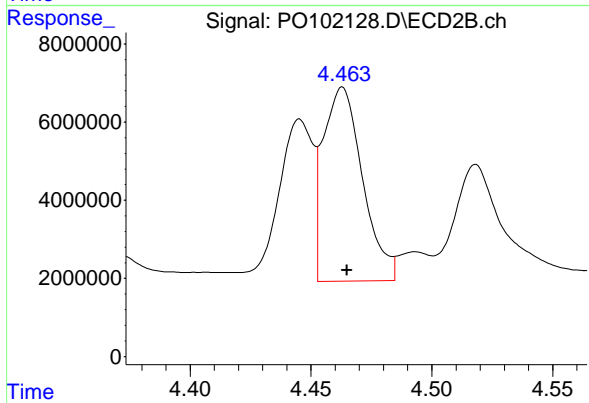
#3 AR-1016-1

R.T.: 4.445 min
 Delta R.T.: -0.002 min
 Response: 42382256
 Conc: 461.87 ng/ml



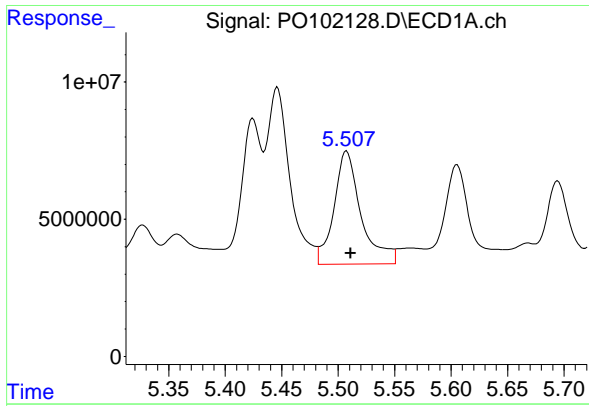
#4 AR-1016-2

R.T.: 5.446 min
 Delta R.T.: -0.004 min
 Response: 92036101
 Conc: 481.15 ng/ml



#4 AR-1016-2

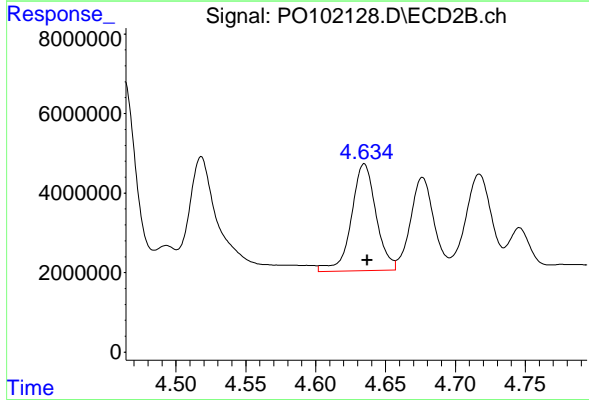
R.T.: 4.463 min
 Delta R.T.: -0.002 min
 Response: 56347034
 Conc: 420.35 ng/ml



#5 AR-1016-3

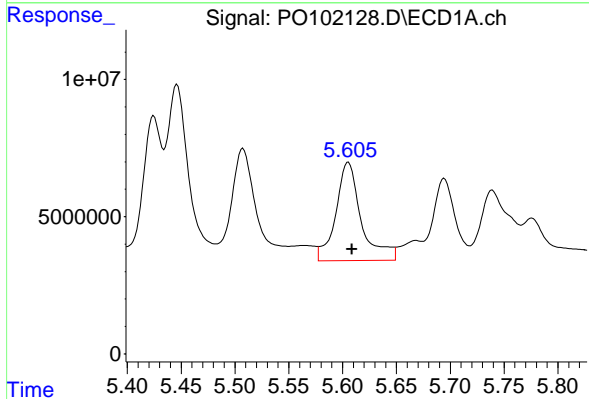
R.T.: 5.508 min
 Delta R.T.: -0.004 min
 Response: 68859705
 Conc: 557.69 ng/ml

Instrument :
 ECD_O
 ClientSampleId :
 WC-1MSD



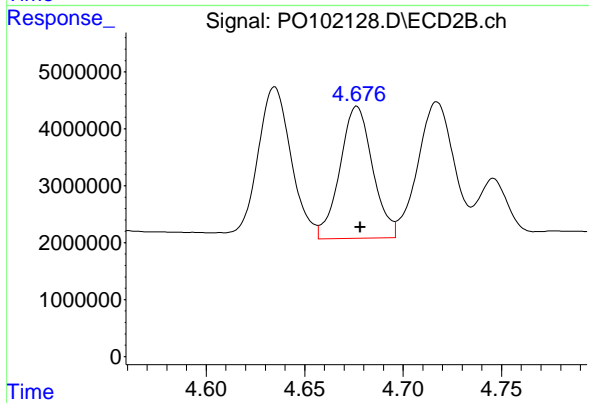
#5 AR-1016-3

R.T.: 4.635 min
 Delta R.T.: -0.002 min
 Response: 33031047
 Conc: 447.90 ng/ml



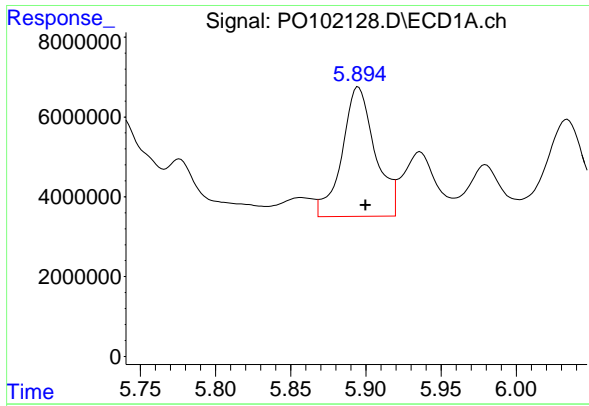
#6 AR-1016-4

R.T.: 5.605 min
 Delta R.T.: -0.003 min
 Response: 58874048
 Conc: 600.29 ng/ml



#6 AR-1016-4

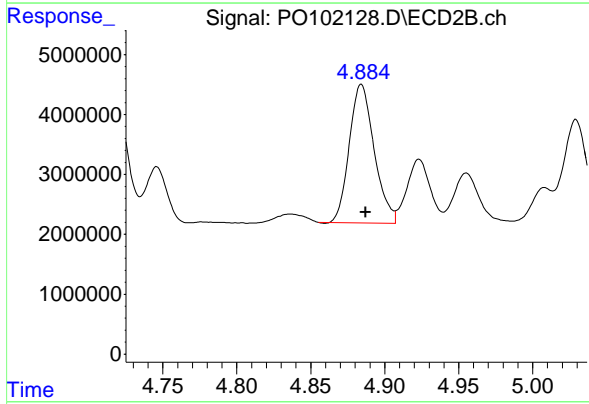
R.T.: 4.677 min
 Delta R.T.: -0.002 min
 Response: 26785435
 Conc: 425.00 ng/ml



#7 AR-1016-5

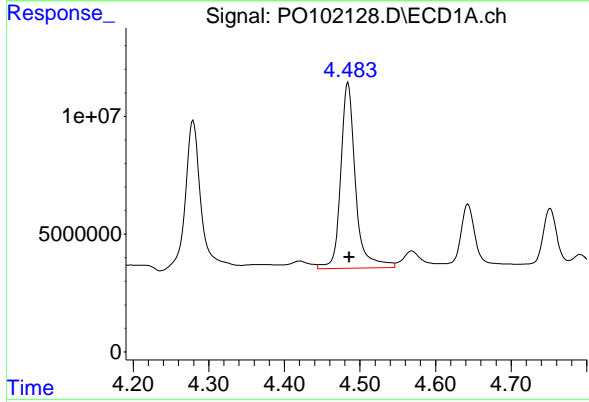
R.T.: 5.895 min
 Delta R.T.: -0.005 min
 Response: 49550110
 Conc: 511.29 ng/ml

Instrument :
 ECD_O
 ClientSampleId :
 WC-1MSD



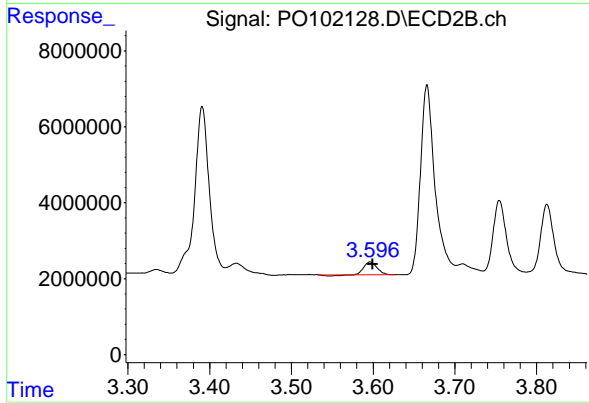
#7 AR-1016-5

R.T.: 4.884 min
 Delta R.T.: -0.003 min
 Response: 27101608
 Conc: 344.14 ng/ml



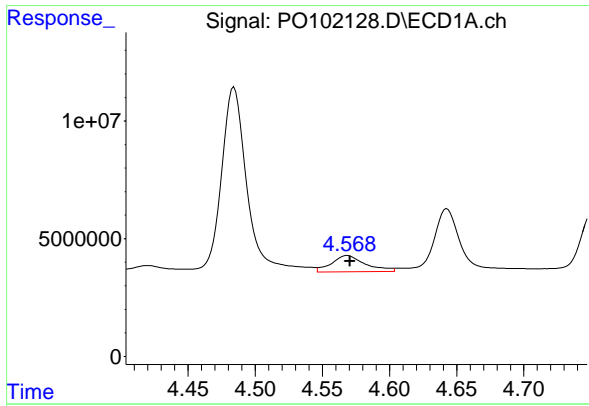
#8 AR-1221-1

R.T.: 4.484 min
 Delta R.T.: -0.002 min
 Response: 106516008
 Conc: 2173.62 ng/ml



#8 AR-1221-1

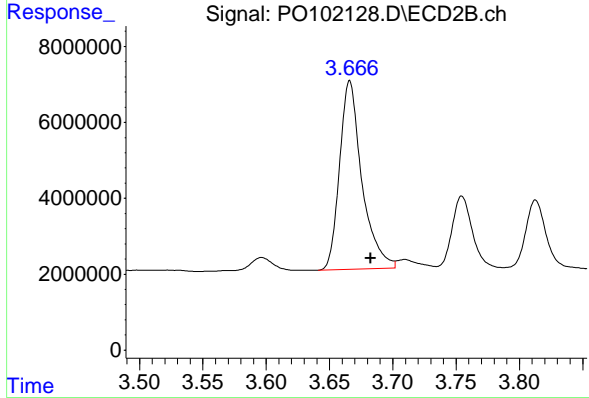
R.T.: 3.596 min
 Delta R.T.: -0.003 min
 Response: 3613754
 Conc: 102.63 ng/ml



#9 AR-1221-2

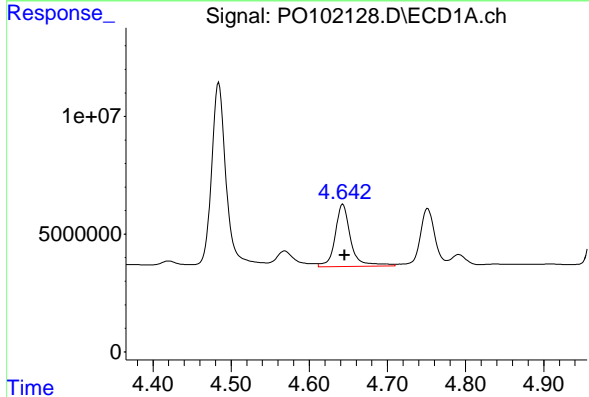
R.T.: 4.569 min
 Delta R.T.: -0.002 min
 Response: 12275315
 Conc: 339.53 ng/ml

Instrument :
 ECD_O
 ClientSampleId :
 WC-1MSD



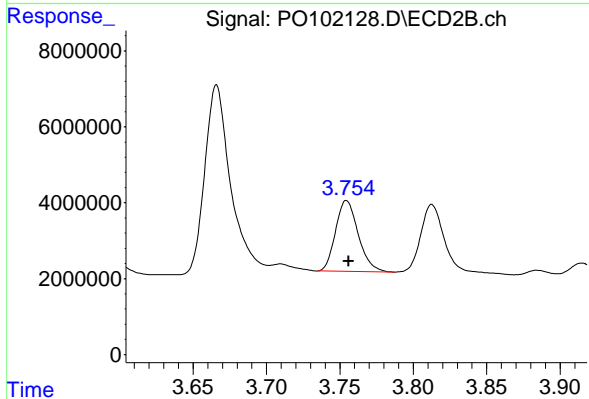
#9 AR-1221-2

R.T.: 3.666 min
 Delta R.T.: -0.016 min
 Response: 60956434
 Conc: 2350.92 ng/ml



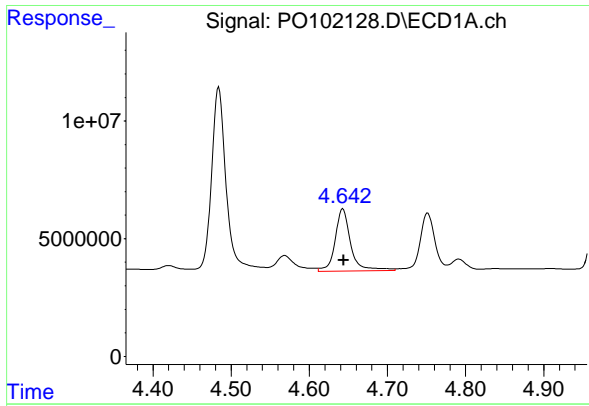
#10 AR-1221-3

R.T.: 4.643 min
 Delta R.T.: -0.002 min
 Response: 36640683
 Conc: 341.75 ng/ml



#10 AR-1221-3

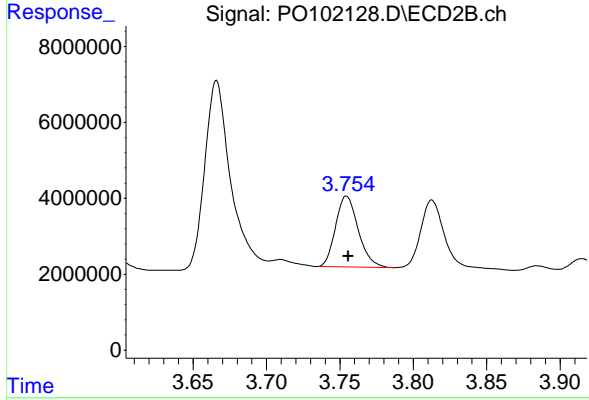
R.T.: 3.755 min
 Delta R.T.: -0.002 min
 Response: 20065880
 Conc: 268.18 ng/ml



#11 AR-1232-1

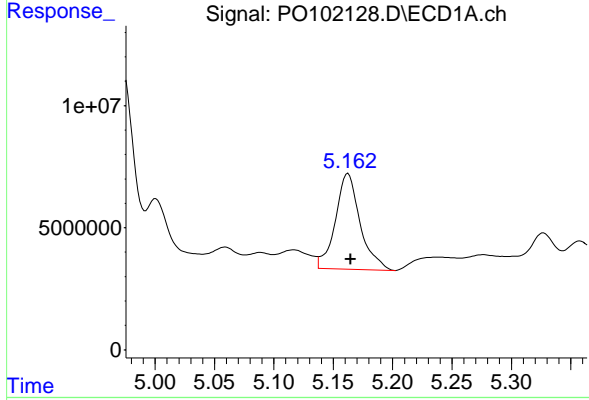
R.T.: 4.643 min
 Delta R.T.: -0.001 min
 Response: 36640683
 Conc: 378.54 ng/ml

Instrument :
 ECD_O
 ClientSampleId :
 WC-1MSD



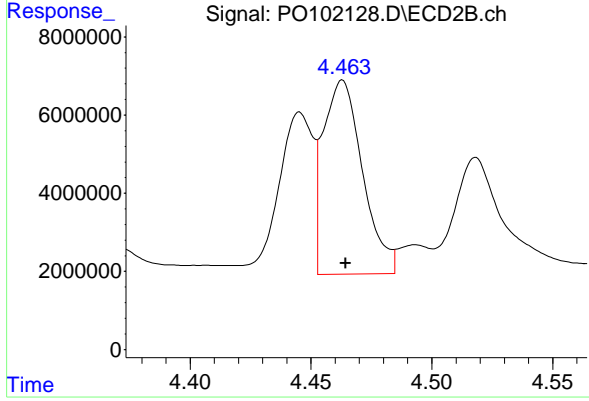
#11 AR-1232-1

R.T.: 3.755 min
 Delta R.T.: -0.001 min
 Response: 20065880
 Conc: 297.72 ng/ml



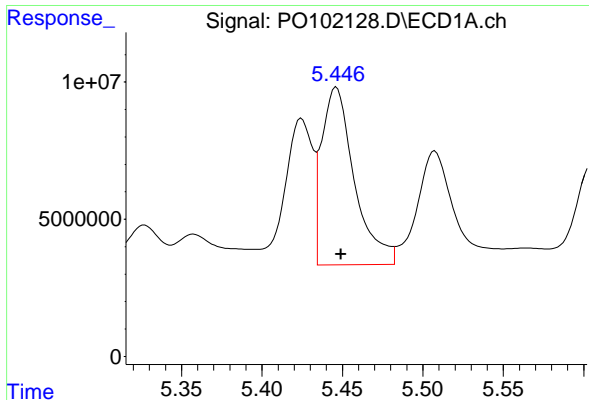
#12 AR-1232-2

R.T.: 5.162 min
 Delta R.T.: -0.002 min
 Response: 56842140
 Conc: 1046.96 ng/ml



#12 AR-1232-2

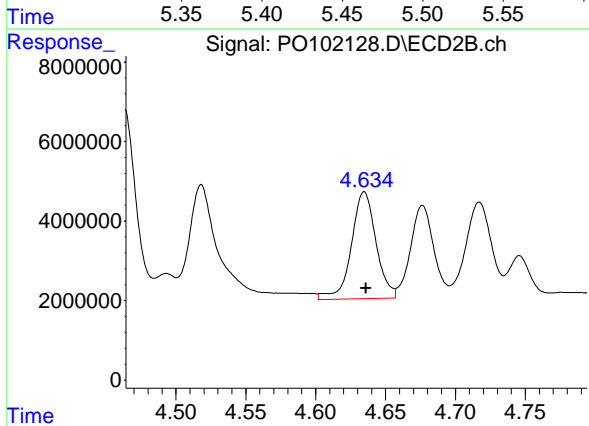
R.T.: 4.463 min
 Delta R.T.: -0.001 min
 Response: 56347034
 Conc: 850.01 ng/ml



#13 AR-1232-3

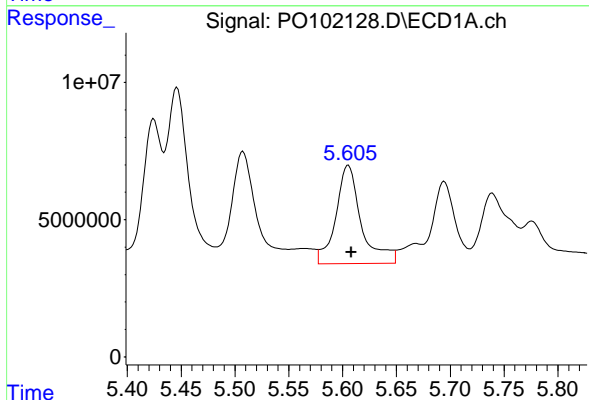
R.T.: 5.446 min
 Delta R.T.: -0.003 min
 Response: 92036101
 Conc: 997.95 ng/ml

Instrument :
 ECD_O
 ClientSampleId :
 WC-1MSD



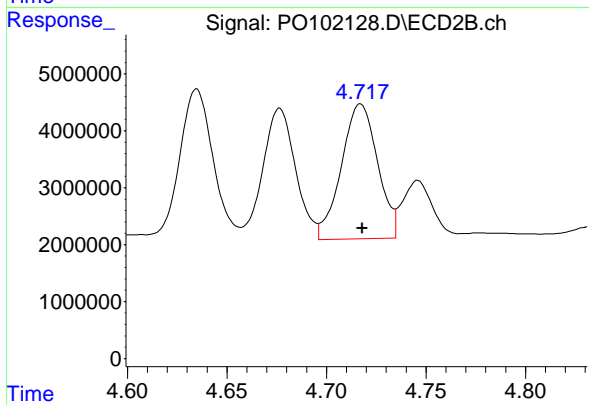
#13 AR-1232-3

R.T.: 4.635 min
 Delta R.T.: -0.001 min
 Response: 33031047
 Conc: 924.84 ng/ml



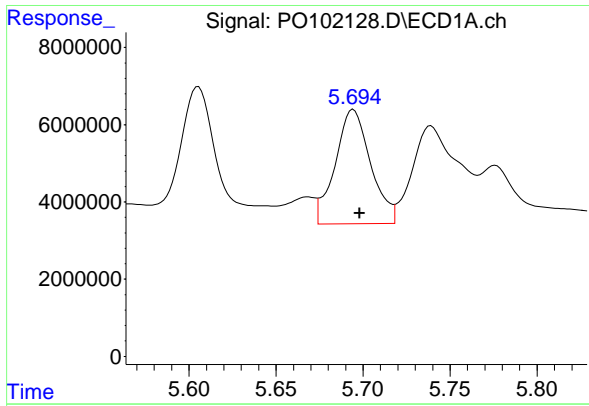
#14 AR-1232-4

R.T.: 5.605 min
 Delta R.T.: -0.003 min
 Response: 58874048
 Conc: 1256.34 ng/ml



#14 AR-1232-4

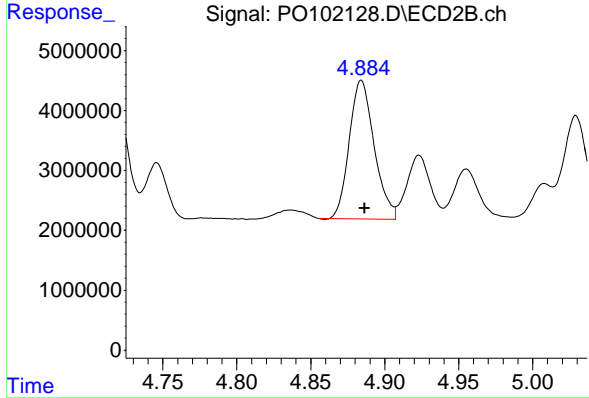
R.T.: 4.717 min
 Delta R.T.: 0.000 min
 Response: 30041815
 Conc: 872.44 ng/ml



#15 AR-1232-5

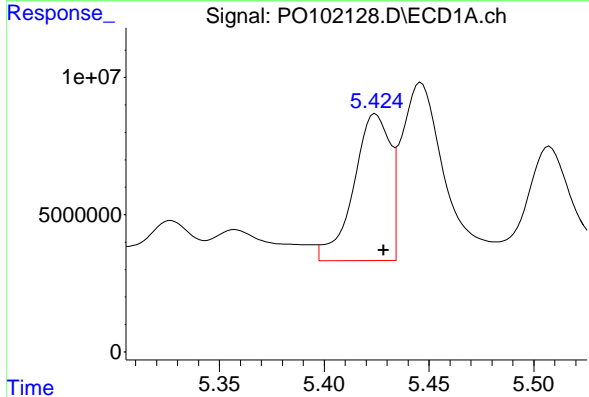
R.T.: 5.694 min
 Delta R.T.: -0.004 min
 Response: 42052083
 Conc: 1191.91 ng/ml

Instrument :
 ECD_O
 ClientSampleId :
 WC-1MSD



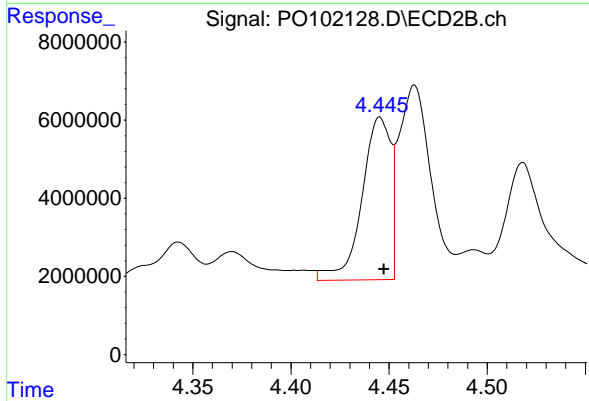
#15 AR-1232-5

R.T.: 4.884 min
 Delta R.T.: -0.002 min
 Response: 27101608
 Conc: 752.52 ng/ml



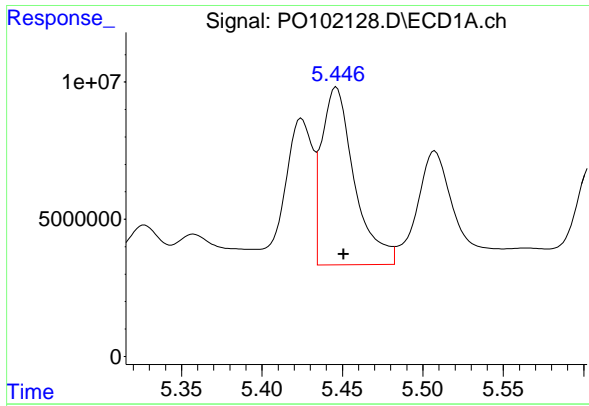
#16 AR-1242-1

R.T.: 5.425 min
 Delta R.T.: -0.004 min
 Response: 64642356
 Conc: 657.91 ng/ml



#16 AR-1242-1

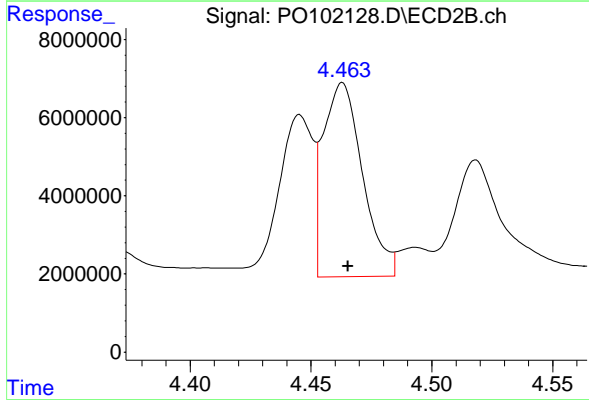
R.T.: 4.445 min
 Delta R.T.: -0.002 min
 Response: 42382256
 Conc: 600.08 ng/ml



#17 AR-1242-2

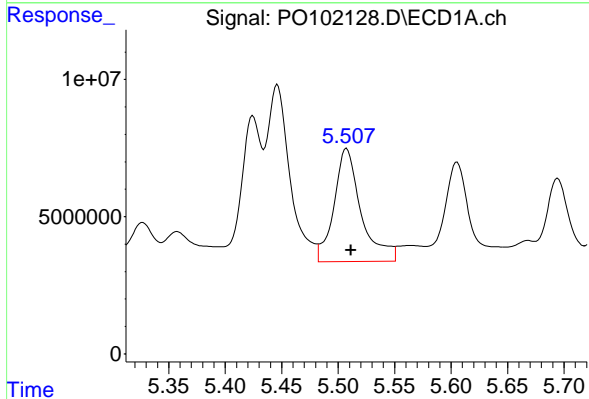
R.T.: 5.446 min
 Delta R.T.: -0.005 min
 Response: 92036101
 Conc: 633.75 ng/ml

Instrument :
 ECD_O
 ClientSampleId :
 WC-1MSD



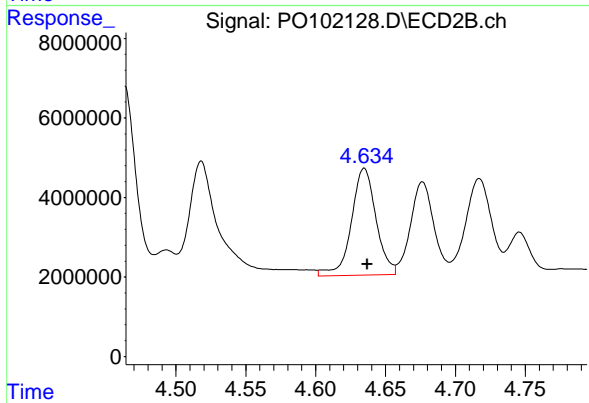
#17 AR-1242-2

R.T.: 4.463 min
 Delta R.T.: -0.002 min
 Response: 56347034
 Conc: 555.02 ng/ml



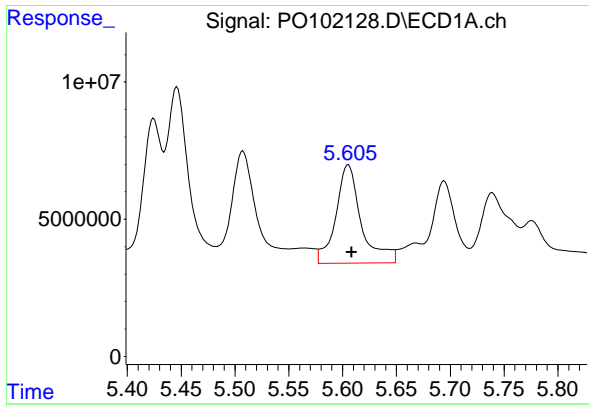
#18 AR-1242-3

R.T.: 5.508 min
 Delta R.T.: -0.004 min
 Response: 68859705
 Conc: 743.80 ng/ml



#18 AR-1242-3

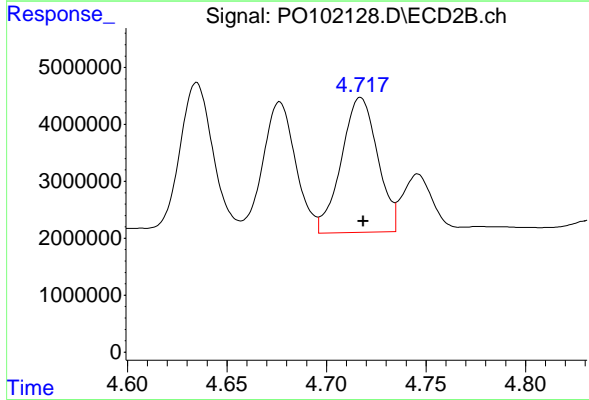
R.T.: 4.635 min
 Delta R.T.: -0.002 min
 Response: 33031047
 Conc: 587.91 ng/ml



#19 AR-1242-4

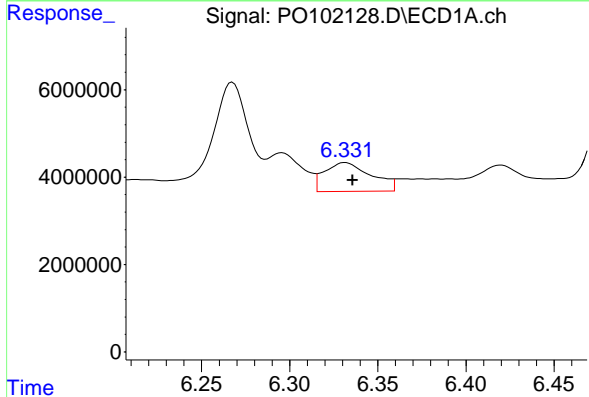
R.T.: 5.605 min
 Delta R.T.: -0.003 min
 Response: 58874048
 Conc: 797.75 ng/ml

Instrument :
 ECD_O
 ClientSampleId :
 WC-1MSD



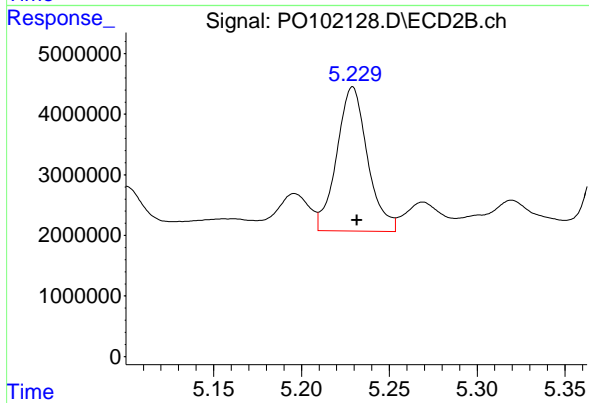
#19 AR-1242-4

R.T.: 4.717 min
 Delta R.T.: -0.001 min
 Response: 30041815
 Conc: 502.25 ng/ml



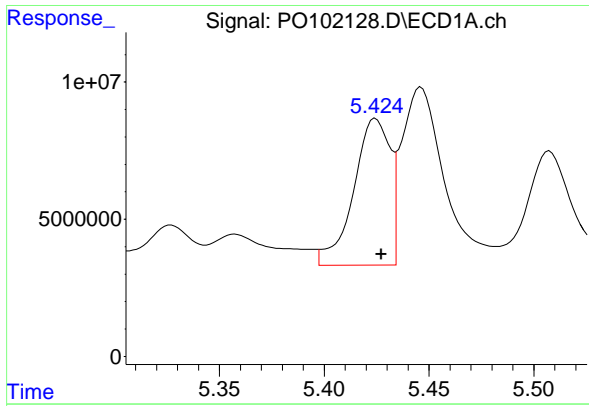
#20 AR-1242-5

R.T.: 6.332 min
 Delta R.T.: -0.004 min
 Response: 12177304
 Conc: 173.90 ng/ml



#20 AR-1242-5

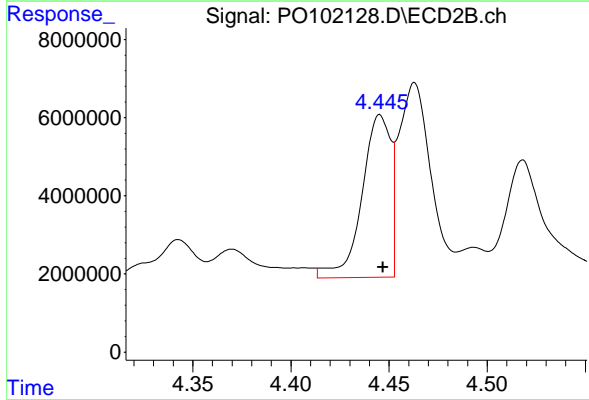
R.T.: 5.229 min
 Delta R.T.: -0.002 min
 Response: 29031185
 Conc: 439.82 ng/ml



#21 AR-1248-1

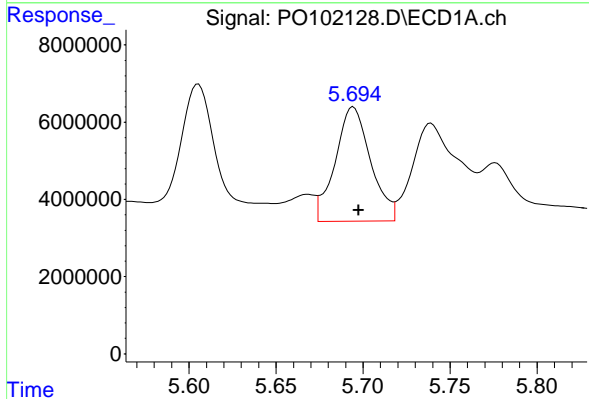
R.T.: 5.425 min
 Delta R.T.: -0.003 min
 Response: 64642356
 Conc: 864.90 ng/ml

Instrument :
 ECD_O
 ClientSampleId :
 WC-1MSD



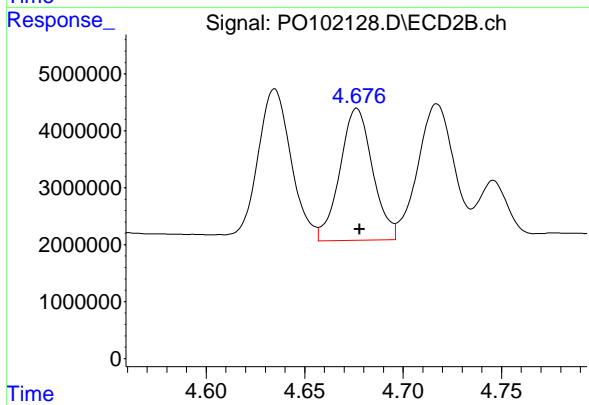
#21 AR-1248-1

R.T.: 4.445 min
 Delta R.T.: -0.002 min
 Response: 42382256
 Conc: 768.69 ng/ml



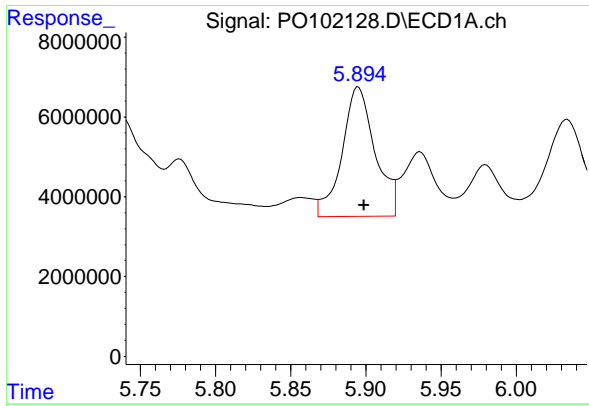
#22 AR-1248-2

R.T.: 5.694 min
 Delta R.T.: -0.003 min
 Response: 42052083
 Conc: 362.50 ng/ml



#22 AR-1248-2

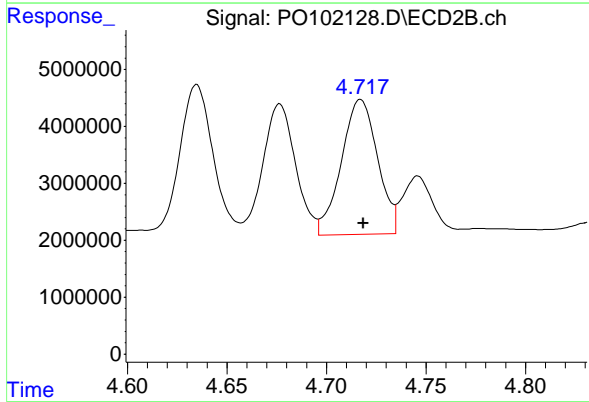
R.T.: 4.677 min
 Delta R.T.: -0.001 min
 Response: 26785435
 Conc: 319.13 ng/ml



#23 AR-1248-3

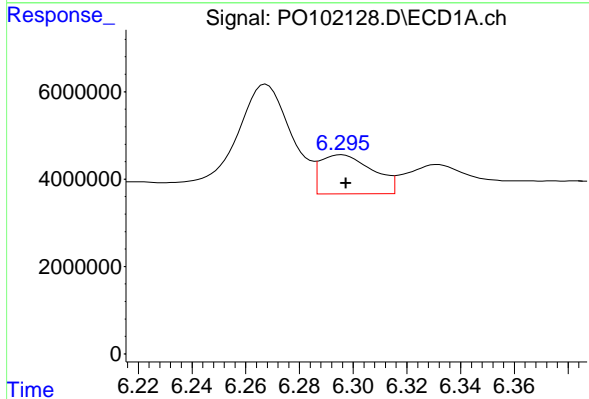
R.T.: 5.895 min
 Delta R.T.: -0.004 min
 Response: 49550110
 Conc: 406.53 ng/ml

Instrument :
 ECD_O
 ClientSampleId :
 WC-1MSD



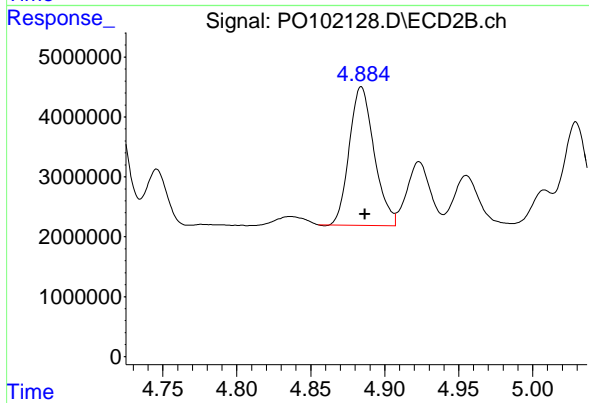
#23 AR-1248-3

R.T.: 4.717 min
 Delta R.T.: -0.001 min
 Response: 30041815
 Conc: 342.15 ng/ml



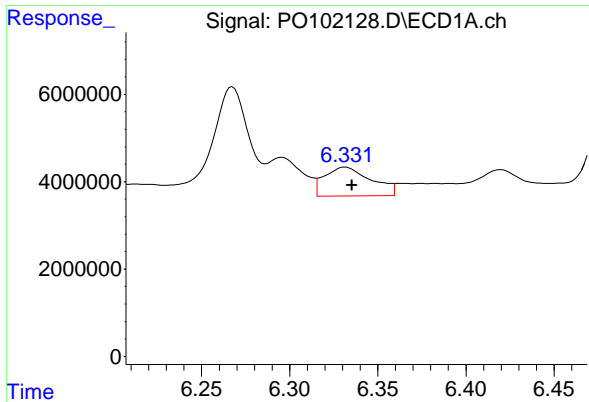
#24 AR-1248-4

R.T.: 6.296 min
 Delta R.T.: -0.002 min
 Response: 12145173
 Conc: 100.65 ng/ml



#24 AR-1248-4

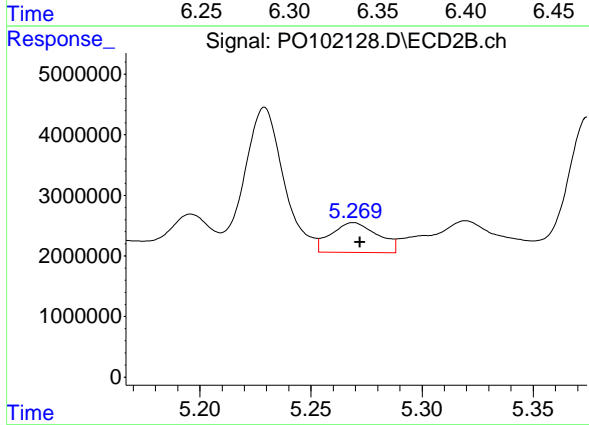
R.T.: 4.884 min
 Delta R.T.: -0.003 min
 Response: 27101608
 Conc: 269.11 ng/ml



#25 AR-1248-5

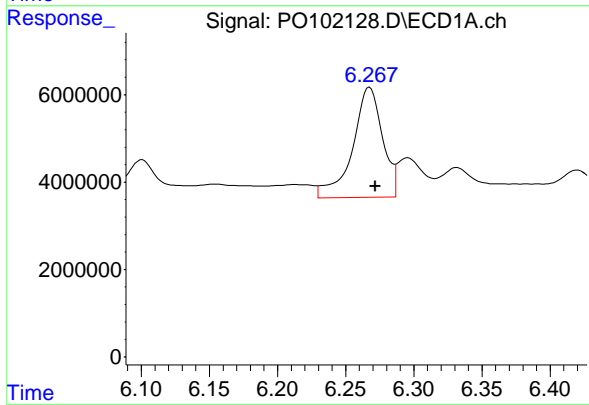
R.T.: 6.332 min
 Delta R.T.: -0.004 min
 Response: 12177304
 Conc: 102.03 ng/ml

Instrument :
 ECD_O
 ClientSampleId :
 WC-1MSD



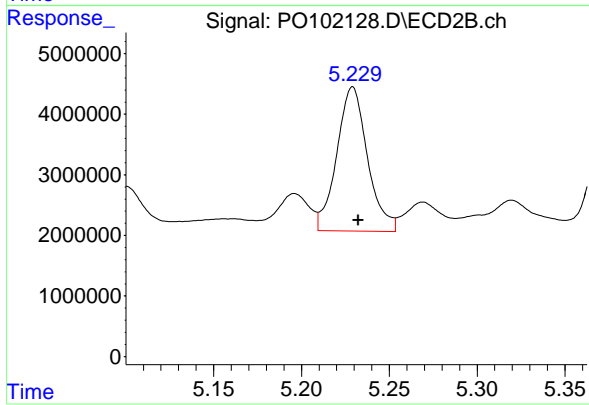
#25 AR-1248-5

R.T.: 5.269 min
 Delta R.T.: -0.003 min
 Response: 7246157
 Conc: 82.87 ng/ml



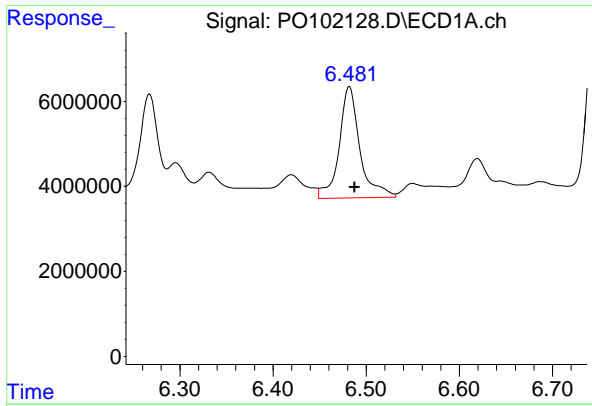
#26 AR-1254-1

R.T.: 6.268 min
 Delta R.T.: -0.004 min
 Response: 38594644
 Conc: 287.33 ng/ml



#26 AR-1254-1

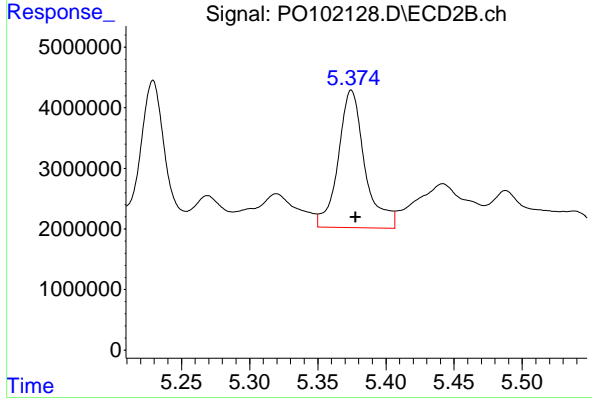
R.T.: 5.229 min
 Delta R.T.: -0.003 min
 Response: 29031185
 Conc: 199.50 ng/ml



#27 AR-1254-2

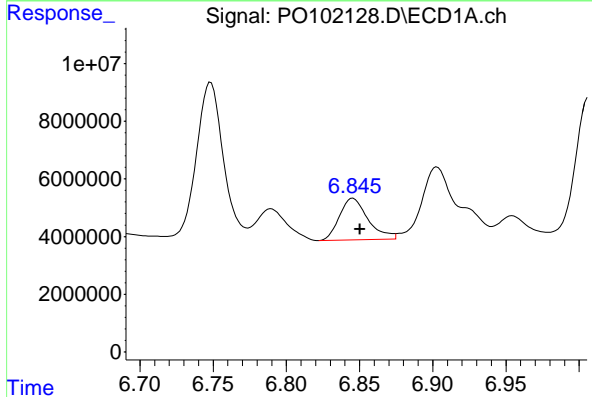
R.T.: 6.482 min
 Delta R.T.: -0.006 min
 Response: 40394472
 Conc: 204.90 ng/ml

Instrument :
 ECD_O
 ClientSampleId :
 WC-1MSD



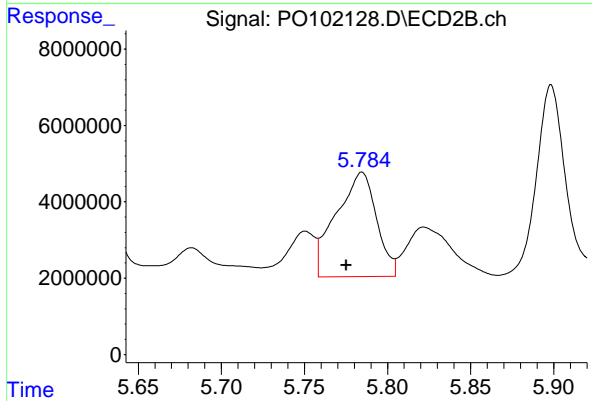
#27 AR-1254-2

R.T.: 5.375 min
 Delta R.T.: -0.003 min
 Response: 30882276
 Conc: 239.38 ng/ml



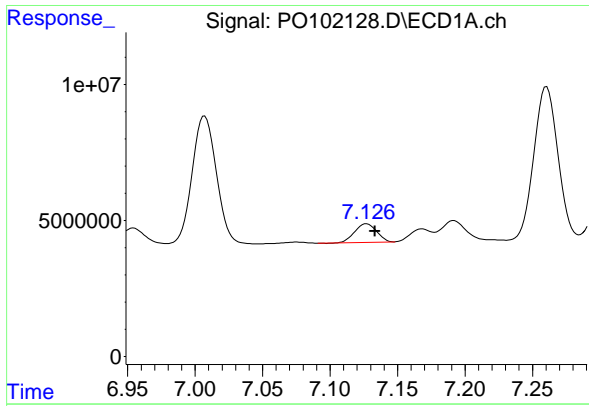
#28 AR-1254-3

R.T.: 6.846 min
 Delta R.T.: -0.005 min
 Response: 19644286
 Conc: 101.31 ng/ml



#28 AR-1254-3

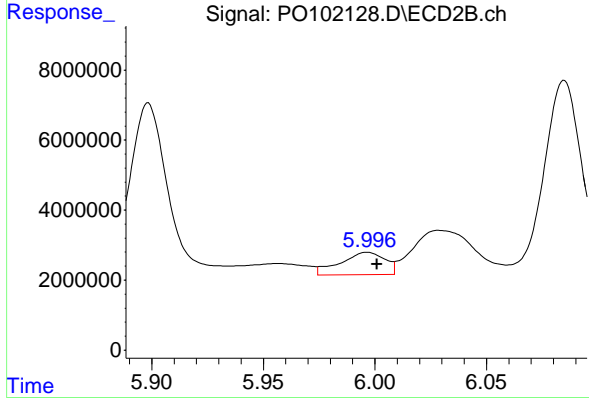
R.T.: 5.785 min
 Delta R.T.: 0.010 min
 Response: 46146381
 Conc: 236.28 ng/ml



#29 AR-1254-4

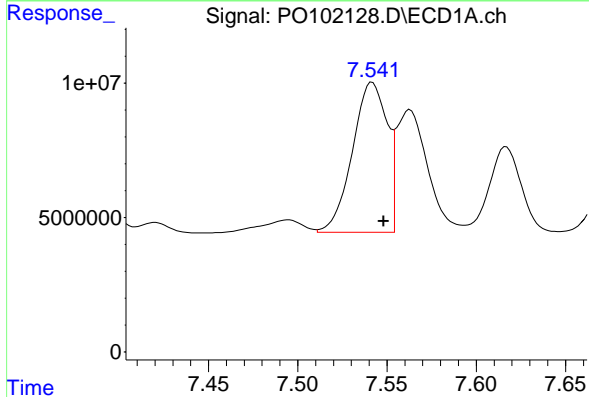
R.T.: 7.127 min
 Delta R.T.: -0.006 min
 Response: 7699289
 Conc: 62.15 ng/ml

Instrument :
 ECD_O
 ClientSampleId :
 WC-1MSD



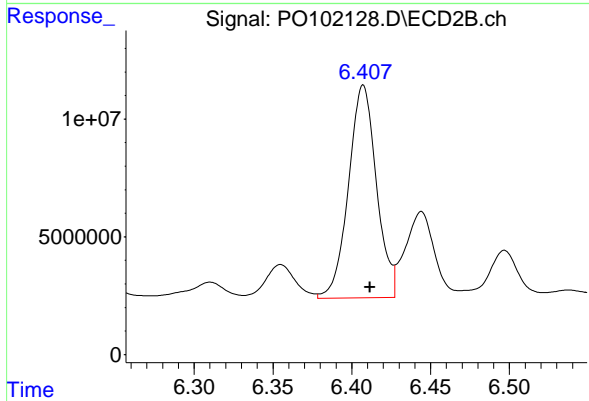
#29 AR-1254-4

R.T.: 5.997 min
 Delta R.T.: -0.004 min
 Response: 8973185
 Conc: 83.33 ng/ml



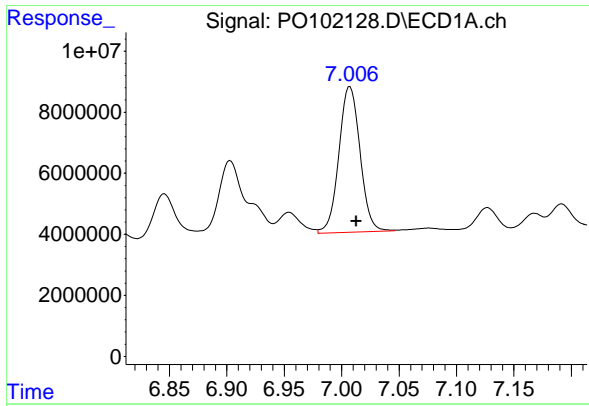
#30 AR-1254-5

R.T.: 7.542 min
 Delta R.T.: -0.006 min
 Response: 75536286
 Conc: 538.02 ng/ml



#30 AR-1254-5

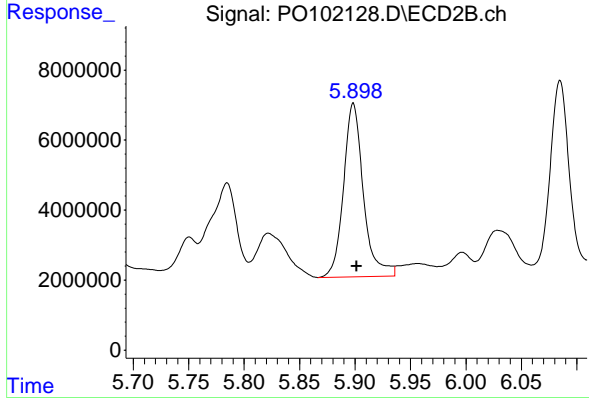
R.T.: 6.407 min
 Delta R.T.: -0.004 min
 Response: 111617146
 Conc: 682.75 ng/ml



#31 AR-1260-1

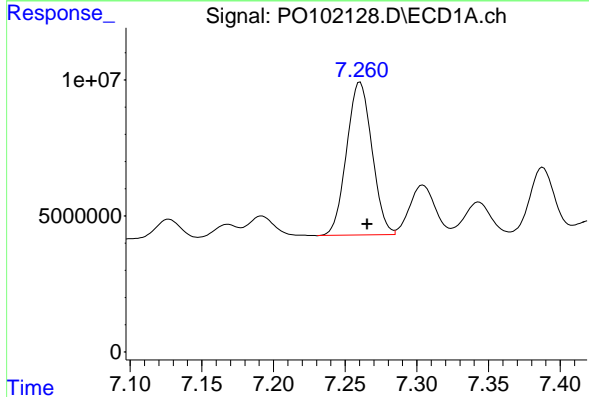
R.T.: 7.007 min
 Delta R.T.: -0.006 min
 Response: 61453233
 Conc: 378.20 ng/ml

Instrument :
 ECD_O
 ClientSampleId :
 WC-1MSD



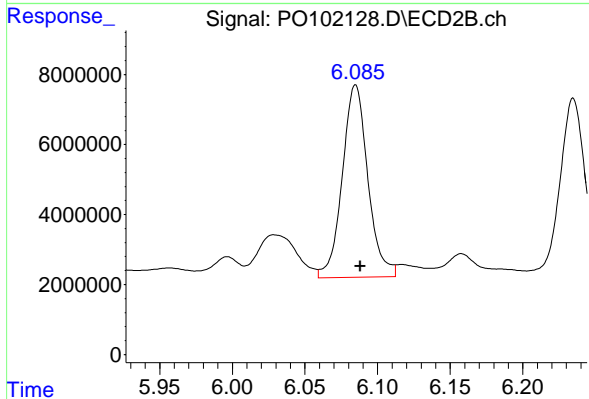
#31 AR-1260-1

R.T.: 5.898 min
 Delta R.T.: -0.003 min
 Response: 61799580
 Conc: 417.29 ng/ml



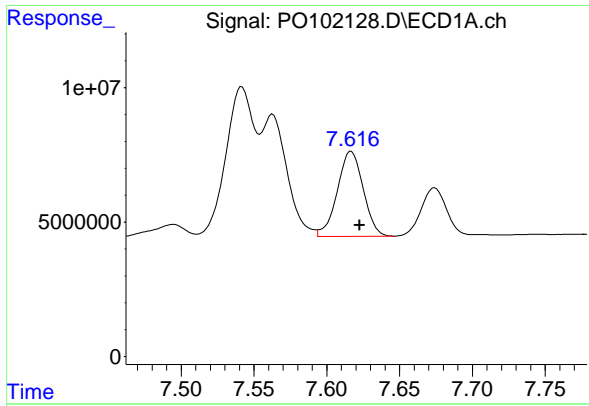
#32 AR-1260-2

R.T.: 7.260 min
 Delta R.T.: -0.005 min
 Response: 69131761
 Conc: 387.66 ng/ml



#32 AR-1260-2

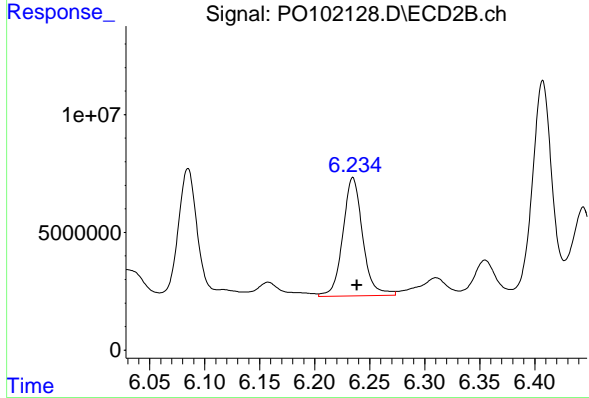
R.T.: 6.085 min
 Delta R.T.: -0.003 min
 Response: 67356541
 Conc: 392.39 ng/ml



#33 AR-1260-3

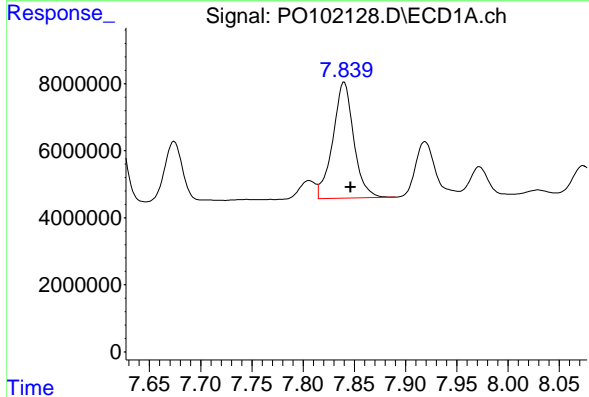
R.T.: 7.617 min
 Delta R.T.: -0.006 min
 Response: 39155430
 Conc: 300.90 ng/ml

Instrument :
 ECD_O
 ClientSampleId :
 WC-1MSD



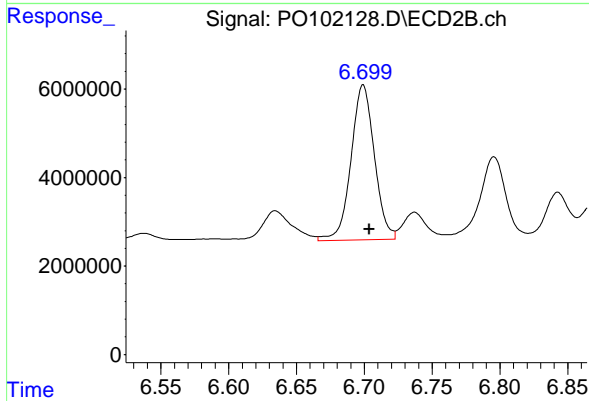
#33 AR-1260-3

R.T.: 6.235 min
 Delta R.T.: -0.004 min
 Response: 63178288
 Conc: 382.14 ng/ml



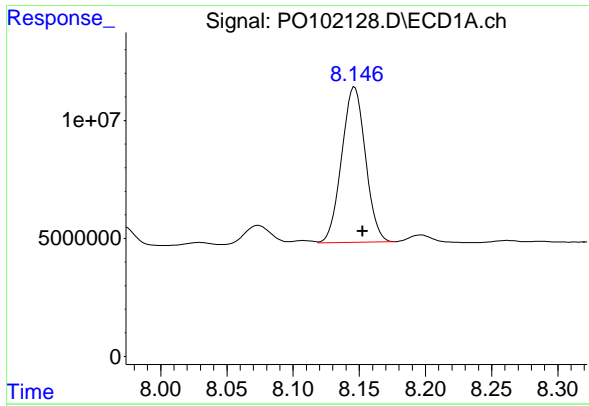
#34 AR-1260-4

R.T.: 7.840 min
 Delta R.T.: -0.006 min
 Response: 48914569
 Conc: 344.36 ng/ml



#34 AR-1260-4

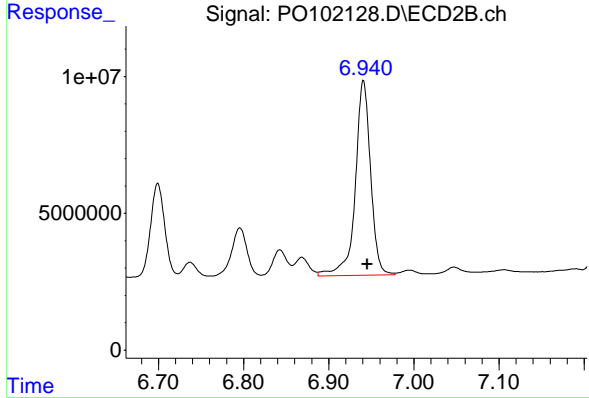
R.T.: 6.699 min
 Delta R.T.: -0.004 min
 Response: 42116664
 Conc: 329.98 ng/ml



#35 AR-1260-5

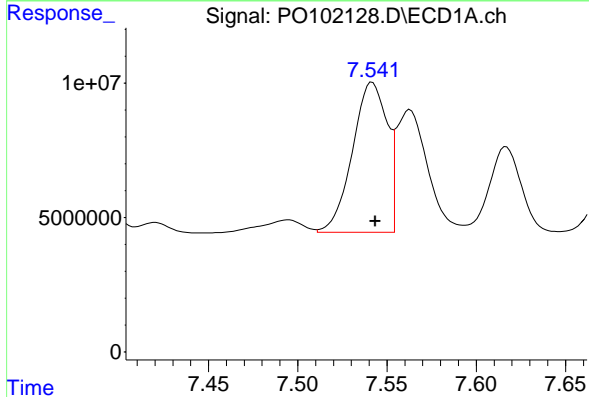
R.T.: 8.147 min
 Delta R.T.: -0.006 min
 Response: 82315632
 Conc: 311.72 ng/ml

Instrument :
 ECD_O
 ClientSampleId :
 WC-1MSD



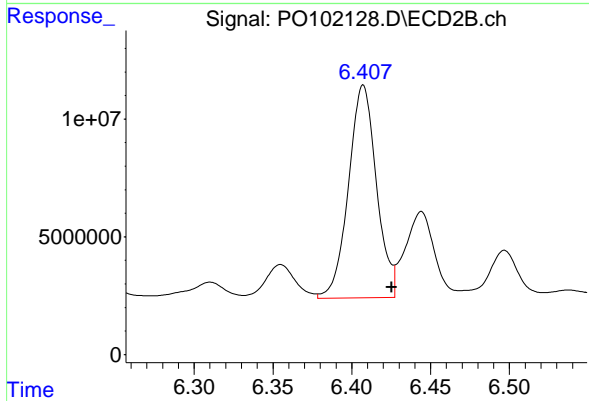
#35 AR-1260-5

R.T.: 6.941 min
 Delta R.T.: -0.004 min
 Response: 88918206
 Conc: 324.82 ng/ml



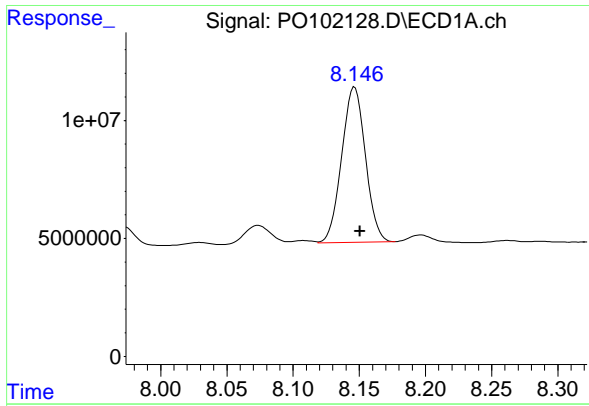
#36 AR-1262-1

R.T.: 7.542 min
 Delta R.T.: -0.002 min
 Response: 75536286
 Conc: 526.91 ng/ml



#36 AR-1262-1

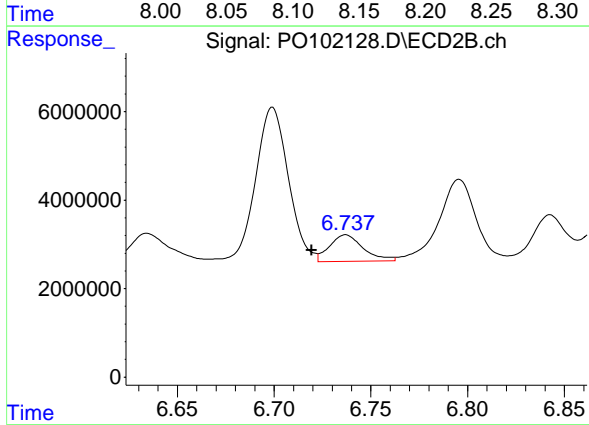
R.T.: 6.407 min
 Delta R.T.: -0.018 min
 Response: 111617146
 Conc: 1019.38 ng/ml



#37 AR-1262-2

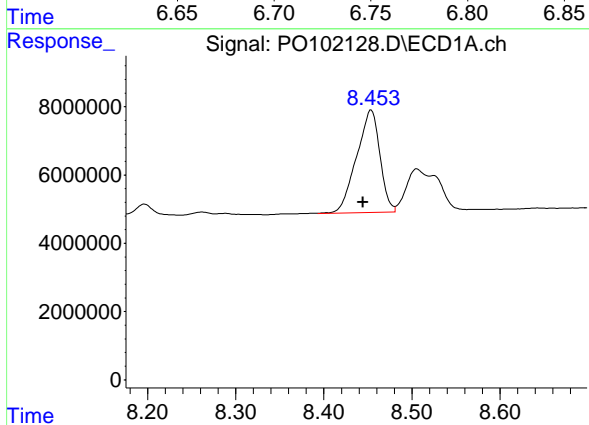
R.T.: 8.147 min
 Delta R.T.: -0.004 min
 Response: 82315632
 Conc: 234.53 ng/ml

Instrument :
 ECD_O
 ClientSampleId :
 WC-1MSD



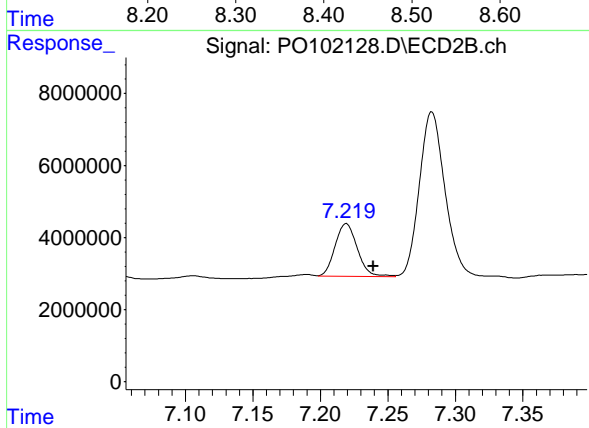
#37 AR-1262-2

R.T.: 6.737 min
 Delta R.T.: 0.018 min
 Response: 7348952
 Conc: 38.17 ng/ml



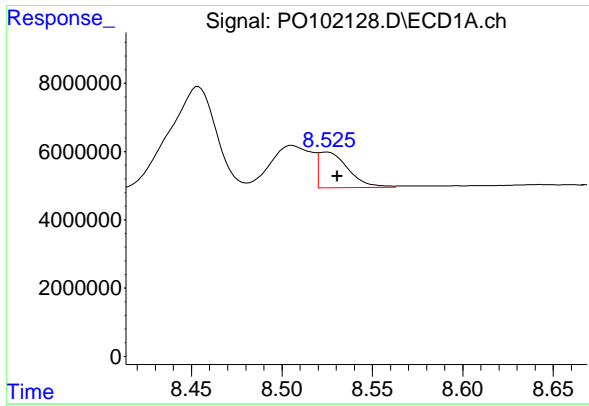
#38 AR-1262-3

R.T.: 8.454 min
 Delta R.T.: 0.009 min
 Response: 55277160
 Conc: 233.60 ng/ml



#38 AR-1262-3

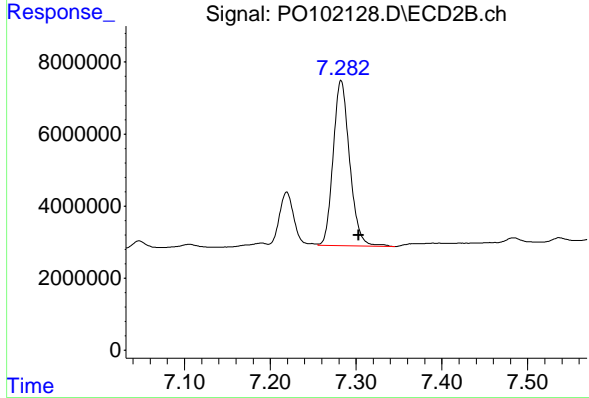
R.T.: 7.219 min
 Delta R.T.: -0.020 min
 Response: 16859067
 Conc: 114.07 ng/ml



#39 AR-1262-4

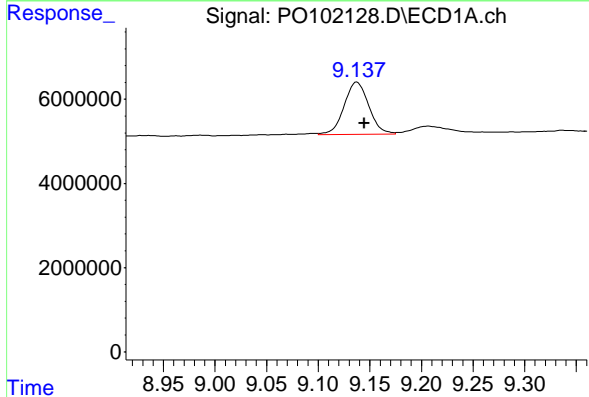
R.T.: 8.525 min
 Delta R.T.: -0.006 min
 Response: 11774699
 Conc: 64.50 ng/ml

Instrument :
 ECD_O
 ClientSampleId :
 WC-1MSD



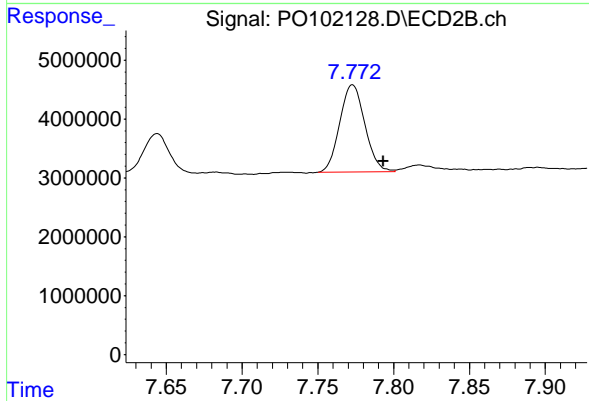
#39 AR-1262-4

R.T.: 7.283 min
 Delta R.T.: -0.021 min
 Response: 61304341
 Conc: 231.47 ng/ml



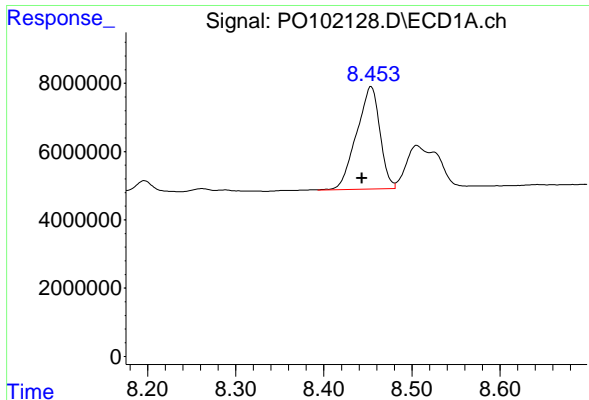
#40 AR-1262-5

R.T.: 9.137 min
 Delta R.T.: -0.007 min
 Response: 20657877
 Conc: 176.76 ng/ml



#40 AR-1262-5

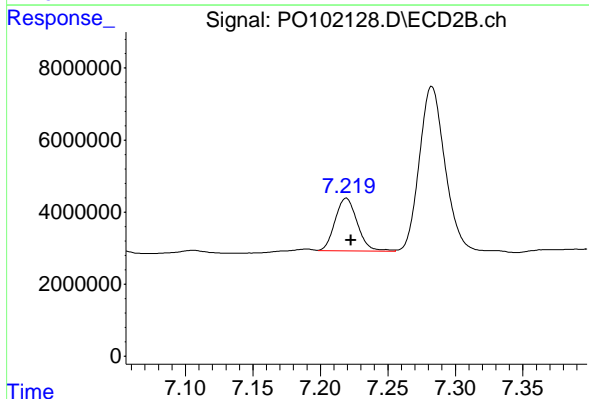
R.T.: 7.773 min
 Delta R.T.: -0.020 min
 Response: 17049835
 Conc: 153.13 ng/ml



#41 AR-1268-1

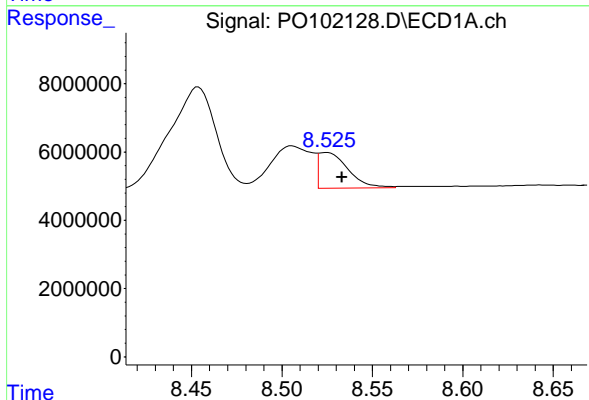
R.T.: 8.454 min
 Delta R.T.: 0.010 min
 Response: 55277160
 Conc: 156.94 ng/ml

Instrument :
 ECD_O
 ClientSampleId :
 WC-1MSD



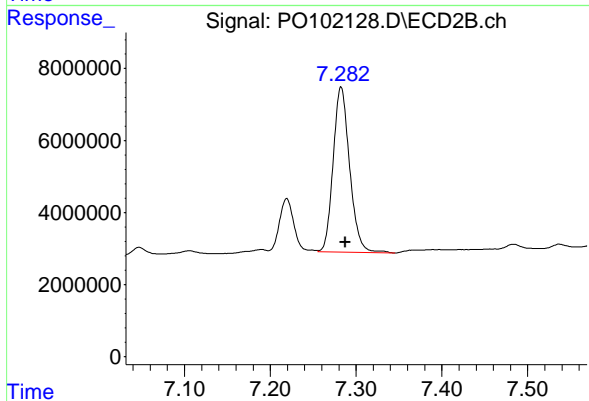
#41 AR-1268-1

R.T.: 7.219 min
 Delta R.T.: -0.004 min
 Response: 16859067
 Conc: 47.53 ng/ml



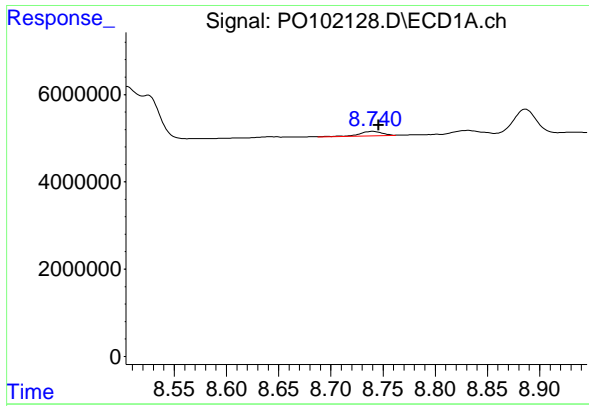
#42 AR-1268-2

R.T.: 8.525 min
 Delta R.T.: -0.008 min
 Response: 11774699
 Conc: 37.22 ng/ml



#42 AR-1268-2

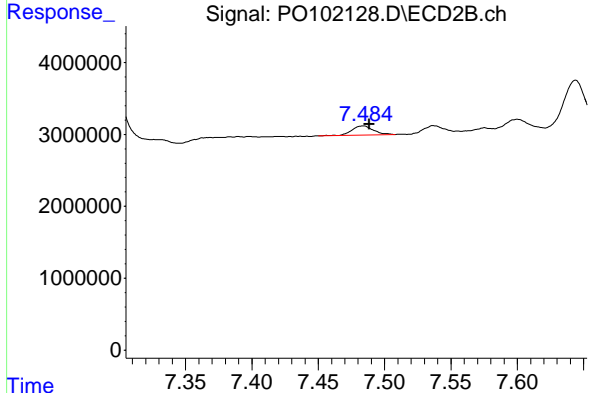
R.T.: 7.283 min
 Delta R.T.: -0.005 min
 Response: 61304341
 Conc: 189.33 ng/ml



#43 AR-1268-3

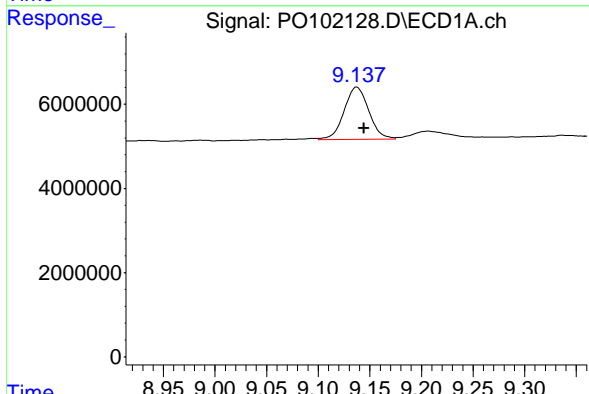
R.T.: 8.740 min
 Delta R.T.: -0.005 min
 Response: 1666818
 Conc: 5.89 ng/ml

Instrument :
 ECD_O
 ClientSampleId :
 WC-1MSD



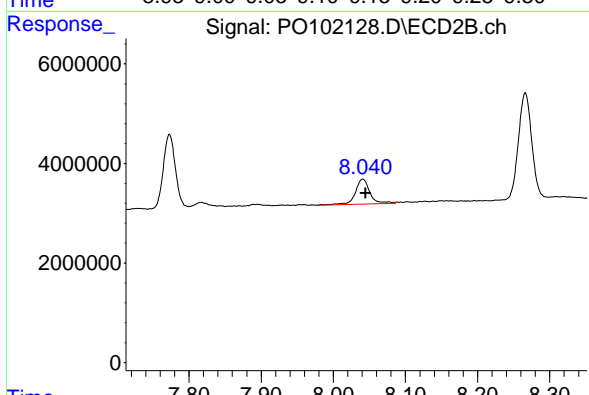
#43 AR-1268-3

R.T.: 7.484 min
 Delta R.T.: -0.005 min
 Response: 1450936
 Conc: 5.30 ng/ml



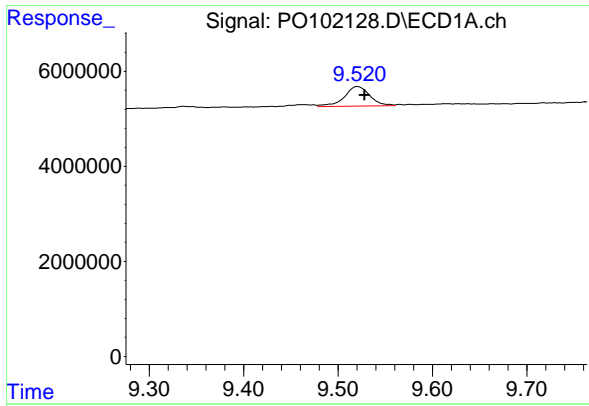
#44 AR-1268-4

R.T.: 9.137 min
 Delta R.T.: -0.007 min
 Response: 20657877
 Conc: 196.04 ng/ml



#44 AR-1268-4

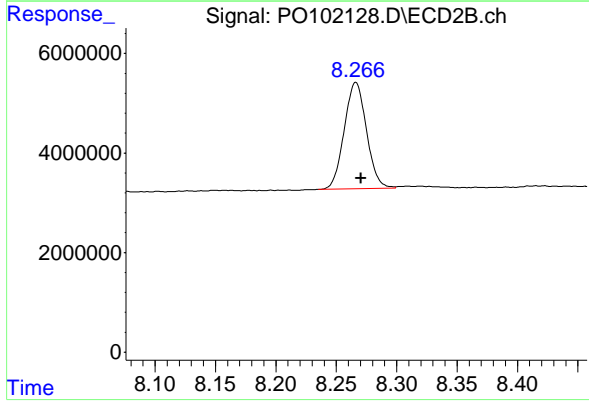
R.T.: 8.041 min
 Delta R.T.: -0.004 min
 Response: 7037175
 Conc: 9.09 ng/ml



#45 AR-1268-5

R.T.: 9.521 min
Delta R.T.: -0.008 min
Response: 7686754
Conc: 8.68 ng/ml

Instrument :
ECD_O
ClientSampleId :
WC-1MSD



#45 AR-1268-5

R.T.: 8.266 min
Delta R.T.: -0.004 min
Response: 27346538
Conc: 75.39 ng/ml