

Data Path : P:\HPCHEM1\ECD_O\Data\PO030218\
 Data File : PO042731.D
 Signal(s) : Signal #1: ECD1A.CH Signal #2: ECD2B.CH
 Acq On : 01 Mar 2018 15:45
 Operator : SM/UA
 Sample : J1688-07RE
 Misc :
 ALS Vial : 11 Sample Multiplier: 1

Instrument :
 ECD_O
 ClientSampleId :
 T-3-SOILRE

Integration File signal 1: autoint1.e
 Integration File signal 2: autoint2.e
 Quant Time: Mar 01 16:02:30 2018
 Quant Method : P:\HPCHEM1\ECD_O\methods\PO022118.M
 Quant Title : GC EXTRACTABLES
 QLast Update : Mon Feb 26 14:24:10 2018
 Response via : Initial Calibration
 Integrator: ChemStation 6890 Scale Mode: Small noise peaks clipped

Volume Inj. : 2 µl
 Signal #1 Phase : ZB-MR1 Signal #2 Phase: ZB-MR2
 Signal #1 Info : 30Mx0.32mmx 0.50µ Signal #2 Info : 30M x 0.32mm x 0.25µm

Compound	RT#1	RT#2	Resp#1	Resp#2	ng/ml	ng/ml

System Monitoring Compounds						
1) SA Tetrachlo...	4.098	3.348	5371430	7437870	21.683	20.128
2) SA Decachlor...	9.474	8.127	2270504	2253579	8.984	5.844 #
Target Compounds						
27) L6 AR-1254-2	6.525	0.000	386534	0	44.442	N.D. #

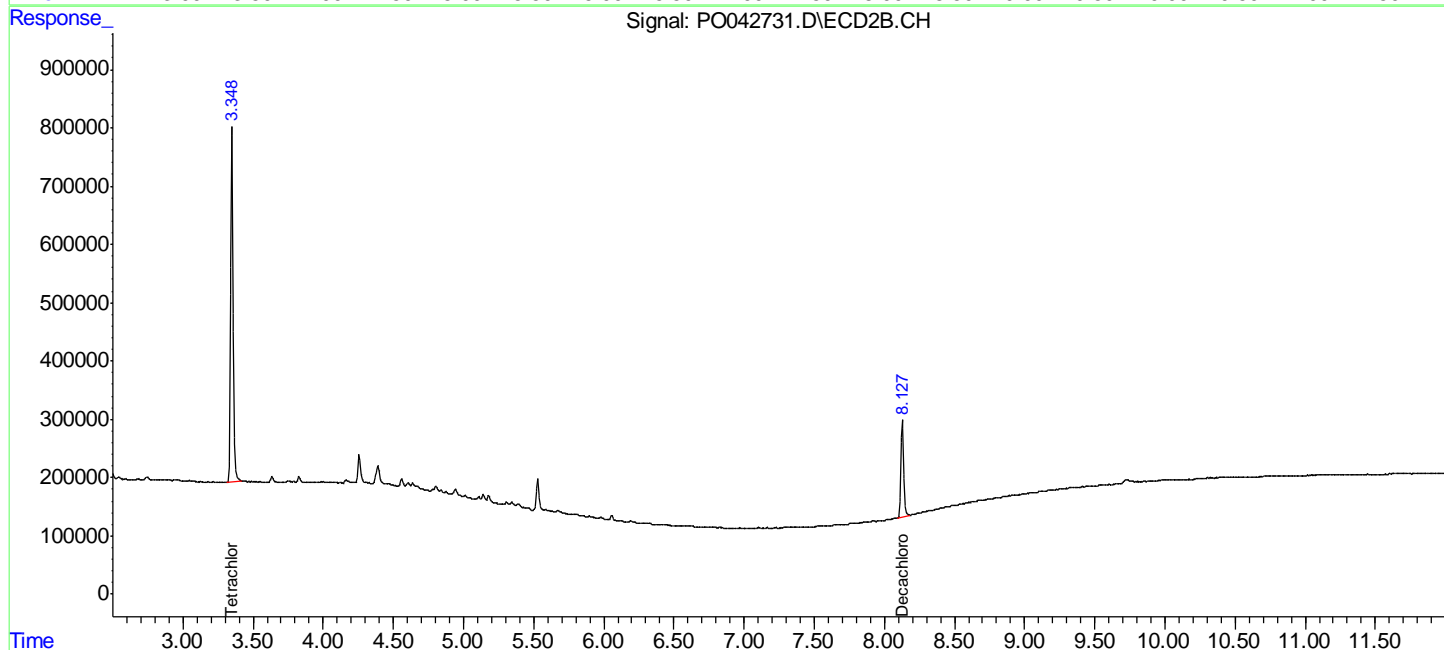
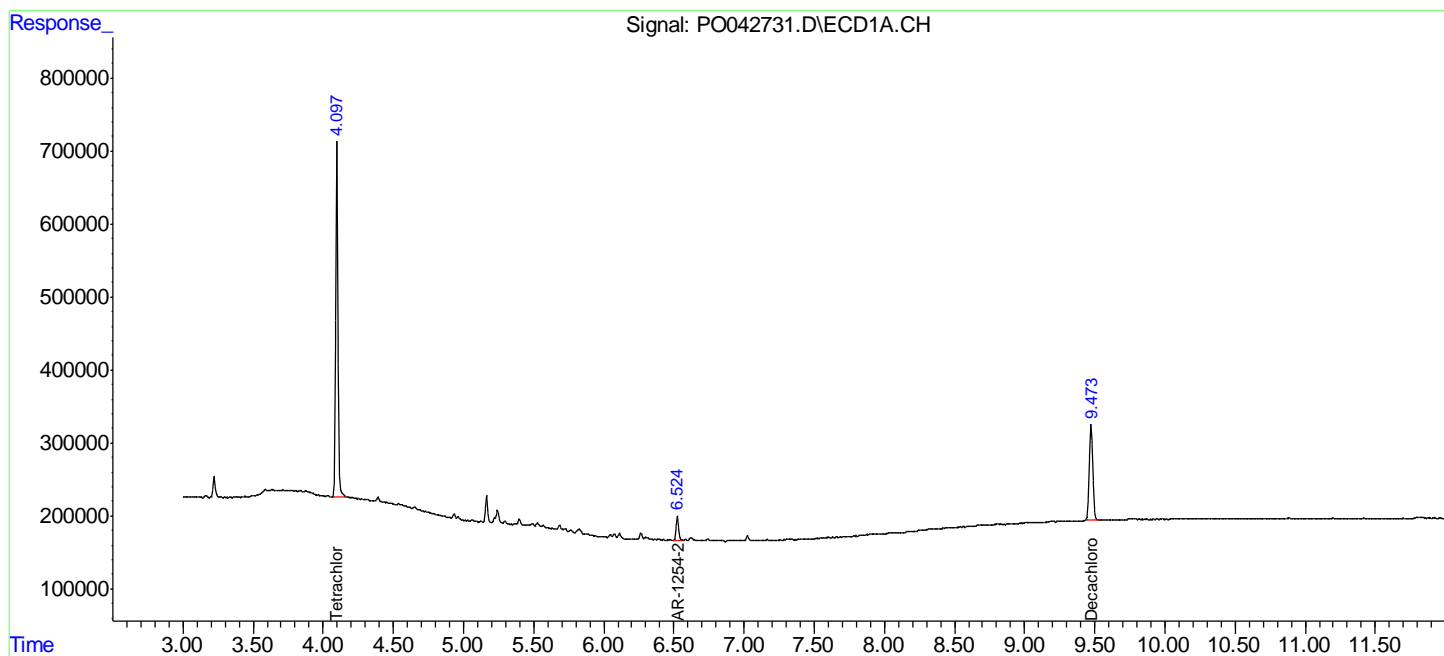
(f)=RT Delta > 1/2 Window (#)=Amounts differ by > 25% (m)=manual int.

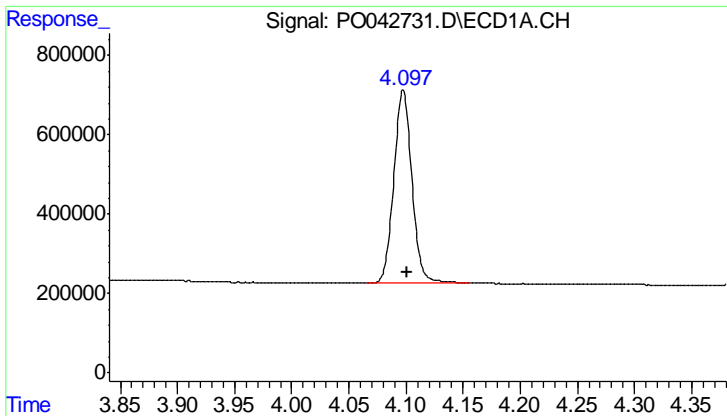
Data Path : P:\HPCHEM1\ECD_O\Data\PO030218\
 Data File : PO042731.D
 Signal(s) : Signal #1: ECD1A.CH Signal #2: ECD2B.CH
 Acq On : 01 Mar 2018 15:45
 Operator : SM/UA
 Sample : J1688-07RE
 Misc :
 ALS Vial : 11 Sample Multiplier: 1

Instrument :
 ECD_O
 ClientSampleId :
 T-3-SOILRE

Integration File signal 1: autoint1.e
 Integration File signal 2: autoint2.e
 Quant Time: Mar 01 16:02:30 2018
 Quant Method : P:\HPCHEM1\ECD_O\methods\PO022118.M
 Quant Title : GC EXTRACTABLES
 QLast Update : Mon Feb 26 14:24:10 2018
 Response via : Initial Calibration
 Integrator: ChemStation 6890 Scale Mode: Small noise peaks clipped

Volume Inj. : 2 µl
 Signal #1 Phase : ZB-MR1 Signal #2 Phase: ZB-MR2
 Signal #1 Info : 30Mx0.32mmx 0.50µ Signal #2 Info : 30M x 0.32mm x 0.25µm

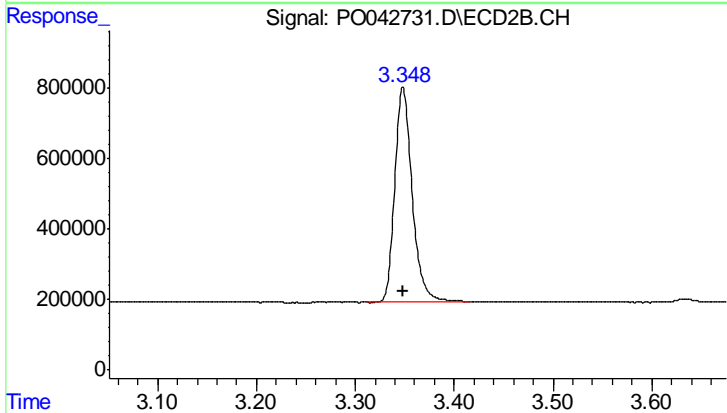




#1 Tetrachloro-m-xylene

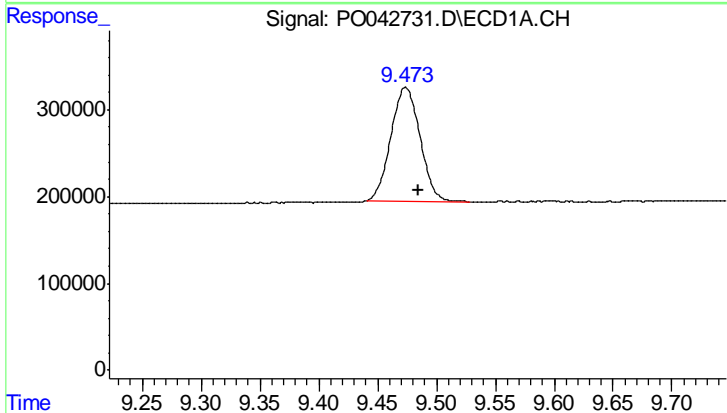
R.T.: 4.098 min
 Delta R.T.: -0.004 min
 Response: 5371430
 Conc: 21.68 ng/ml

Instrument :
 ECD_O
 ClientSampleId :
 T-3-SOILRE



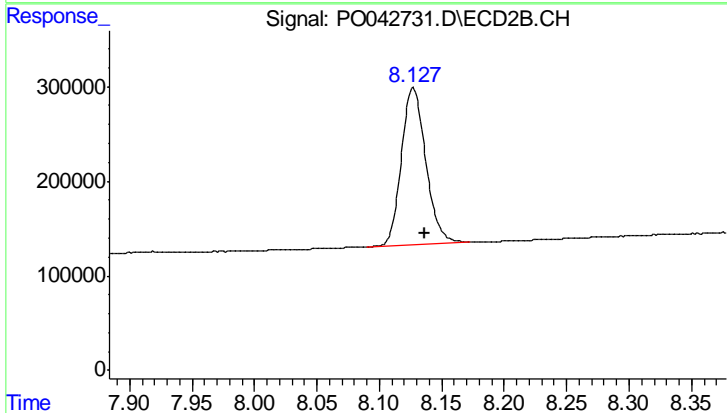
#1 Tetrachloro-m-xylene

R.T.: 3.348 min
 Delta R.T.: 0.000 min
 Response: 7437870
 Conc: 20.13 ng/ml



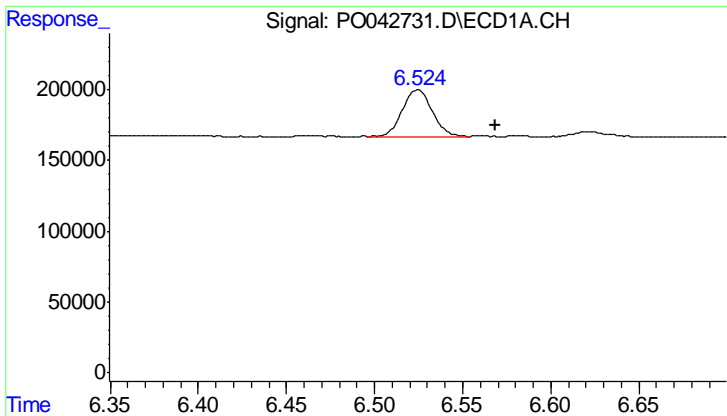
#2 Decachlorobiphenyl

R.T.: 9.474 min
 Delta R.T.: -0.011 min
 Response: 2270504
 Conc: 8.98 ng/ml



#2 Decachlorobiphenyl

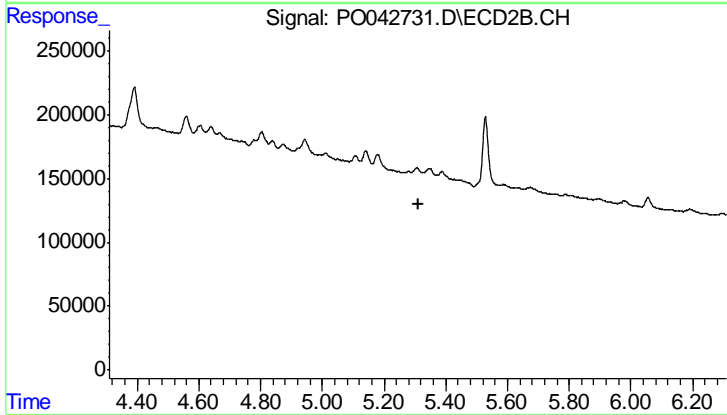
R.T.: 8.127 min
 Delta R.T.: -0.009 min
 Response: 2253579
 Conc: 5.84 ng/ml



#27 AR-1254-2

R.T.: 6.525 min
 Delta R.T.: -0.043 min
 Response: 386534
 Conc: 44.44 ng/ml

Instrument :
 ECD_O
 ClientSampleId :
 T-3-SOILRE



#27 AR-1254-2

R.T.: 0.000 min
 Exp R.T. : 5.310 min
 Response: 0
 Conc: N.D.