

Data Path : P:\HPCHEM1\ECD O\Data\PO030218\
 Data File : PO042703.D
 Signal(s) : Signal #1: ECD1A.CH Signal #2: ECD2B.CH
 Acq On : 01 Mar 2018 7:57
 Operator : SM/UA
 Sample : I.BLK
 Misc :
 ALS Vial : 2 Sample Multiplier: 1

Instrument :
 ECD_O
ClientSampleId :
 I.BLK

Manual Integrations
APPROVED
 ugo
 3/2/2018 4:57:16 PM

Integration File signal 1: autoint1.e
 Integration File signal 2: autoint2.e
 Quant Time: Mar 01 09:25:29 2018
 Quant Method : P:\HPCHEM1\ECD_O\methods\PO022118.M
 Quant Title : GC EXTRACTABLES
 QLast Update : Mon Feb 26 14:24:10 2018
 Response via : Initial Calibration
 Integrator: ChemStation 6890 Scale Mode: Small noise peaks clipped

Volume Inj. : 2 µl
 Signal #1 Phase : ZB-MR1 Signal #2 Phase: ZB-MR2
 Signal #1 Info : 30Mx0.32mmx 0.50µ Signal #2 Info : 30M x 0.32mm x 0.25µm

Compound	RT#1	RT#2	Resp#1	Resp#2	nq/ml	nq/ml

System Monitoring Compounds						
1) SA Tetrachlo...	4.095	3.345	3879970	5277391	15.663	14.281
2) SA Decachlor...	9.467	8.127	4525711	7144664	17.907m	18.528

Target Compounds

(f)=RT Delta > 1/2 Window (#)=Amounts differ by > 25% (m)=manual int.

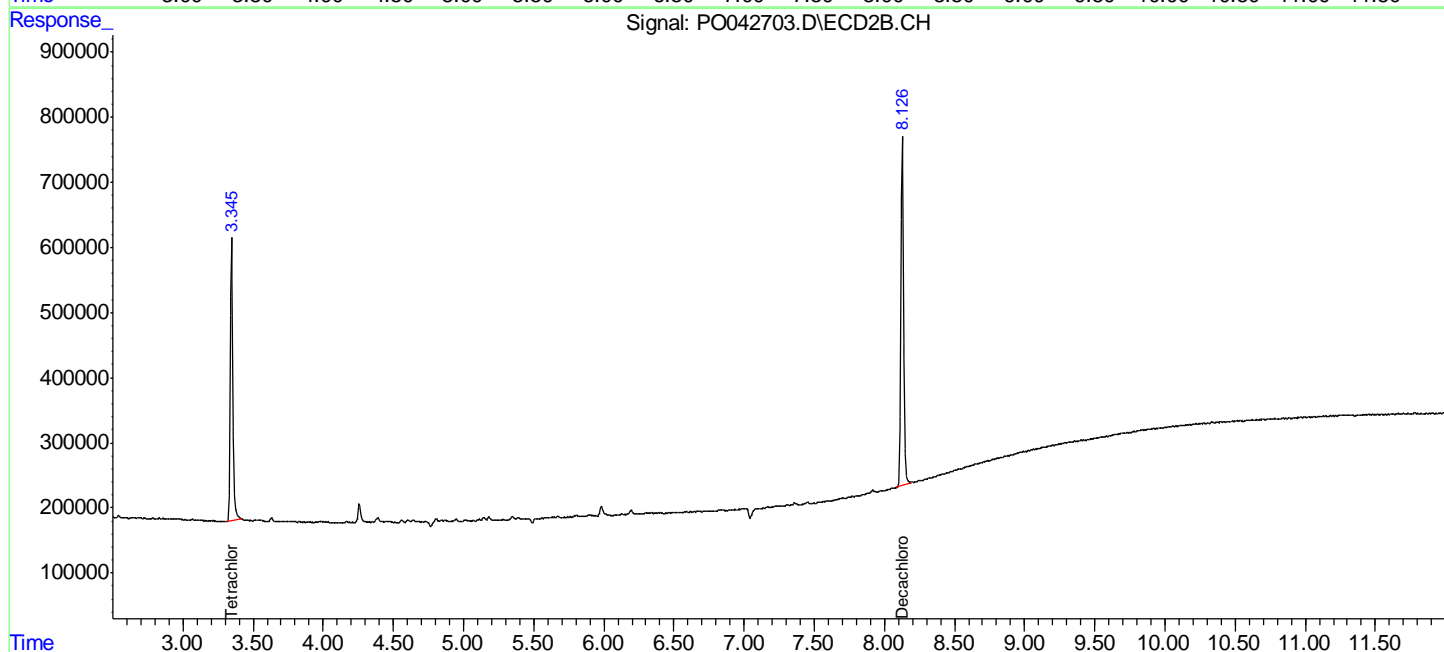
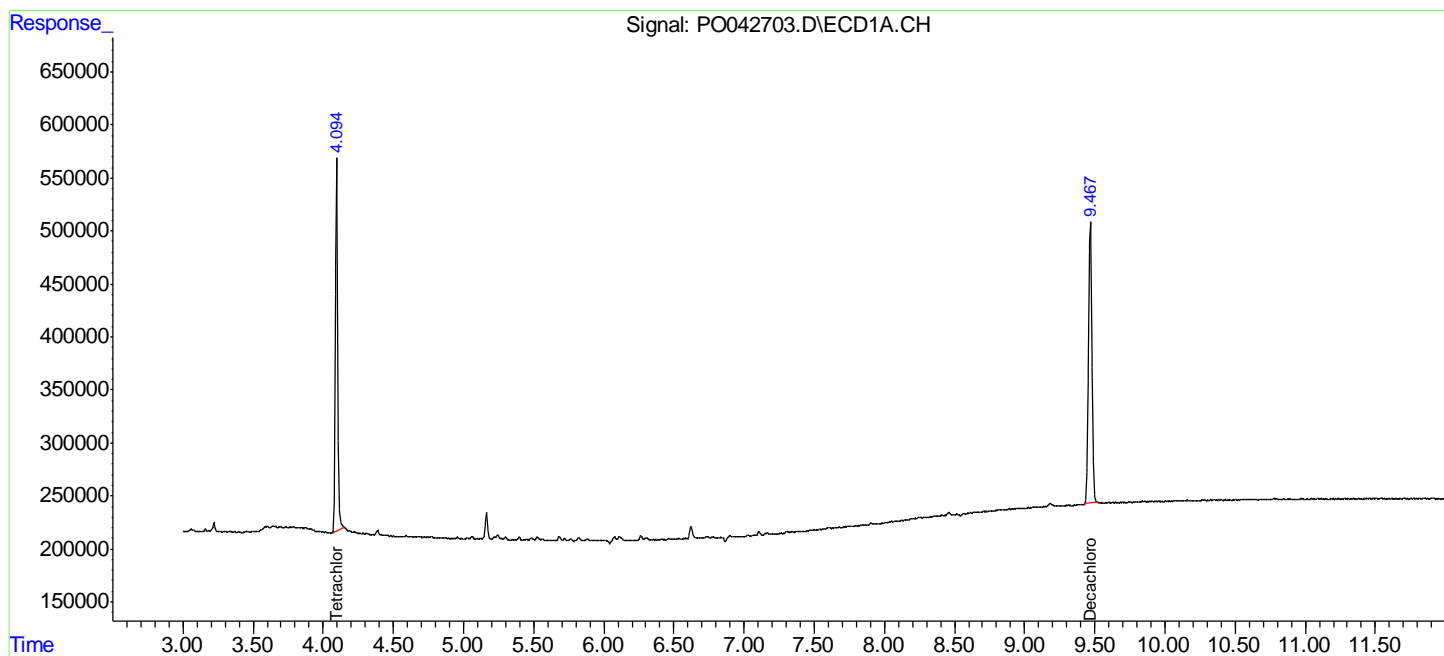
Data Path : P:\HPCHEM1\ECD O\Data\PO030218\
 Data File : PO042703.D
 Signal(s) : Signal #1: ECD1A.CH Signal #2: ECD2B.CH
 Acq On : 01 Mar 2018 7:57
 Operator : SM/UA
 Sample : I.BLK
 Misc :
 ALS Vial : 2 Sample Multiplier: 1

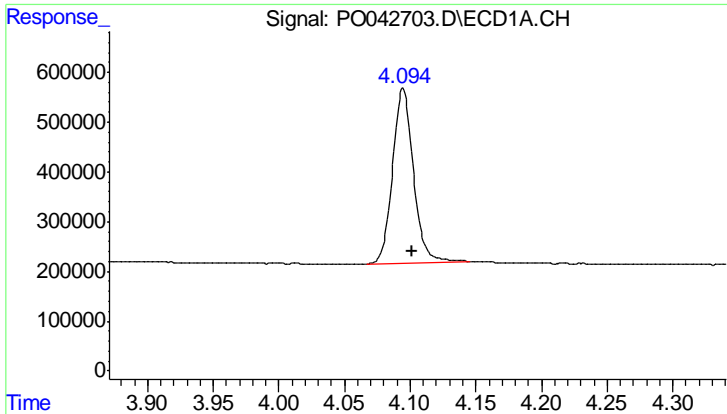
Instrument :
 ECD_O
 ClientSampled :
 I.BLK

Manual Integrations
APPROVED
 ugo
 3/2/2018 4:57:16 PM

Integration File signal 1: autoint1.e
 Integration File signal 2: autoint2.e
 Quant Time: Mar 01 09:25:29 2018
 Quant Method : P:\HPCHEM1\ECD_O\methods\PO022118.M
 Quant Title : GC EXTRACTABLES
 QLast Update : Mon Feb 26 14:24:10 2018
 Response via : Initial Calibration
 Integrator: ChemStation 6890 Scale Mode: Small noise peaks clipped

Volume Inj. : 2 µl
 Signal #1 Phase : ZB-MR1 Signal #2 Phase: ZB-MR2
 Signal #1 Info : 30Mx0.32mmx 0.50µ Signal #2 Info : 30M x 0.32mm x 0.25µm





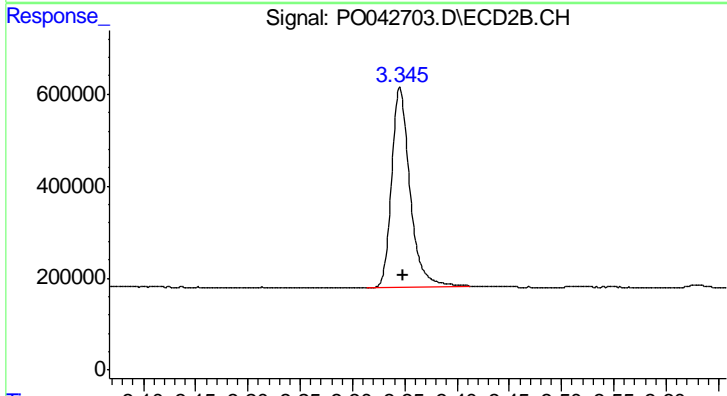
#1 Tetrachloro-m-xylene

R.T.: 4.095 min
 Delta R.T.: -0.007 min
 Response: 3879970
 Conc: 15.66 ng/ml

Instrument :
 ECD_O
 ClientSampled :
 I.BLK

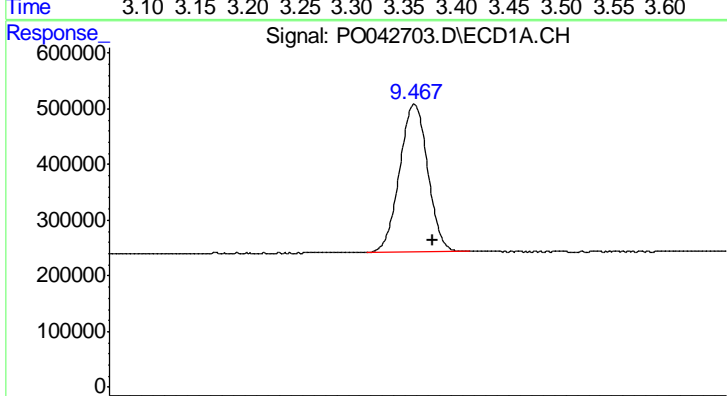
Manual Integrations
 APPROVED

ugo
 3/2/2018 4:57:16 PM



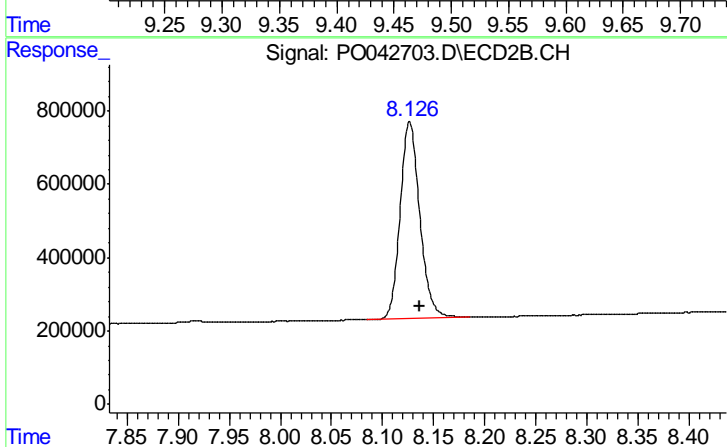
#1 Tetrachloro-m-xylene

R.T.: 3.345 min
 Delta R.T.: -0.003 min
 Response: 5277391
 Conc: 14.28 ng/ml



#2 Decachlorobiphenyl

R.T.: 9.467 min
 Delta R.T.: -0.017 min
 Response: 4525711
 Conc: 17.91 ng/ml m



#2 Decachlorobiphenyl

R.T.: 8.127 min
 Delta R.T.: -0.010 min
 Response: 7144664
 Conc: 18.53 ng/ml